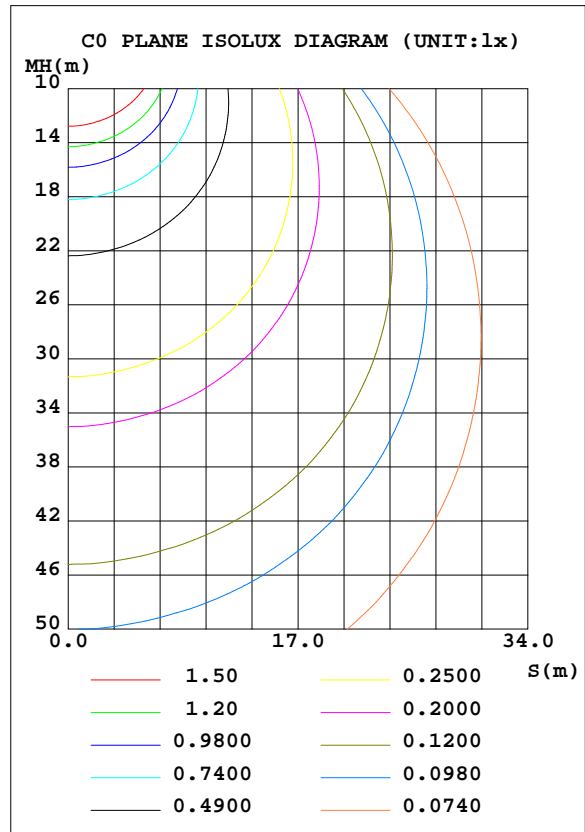
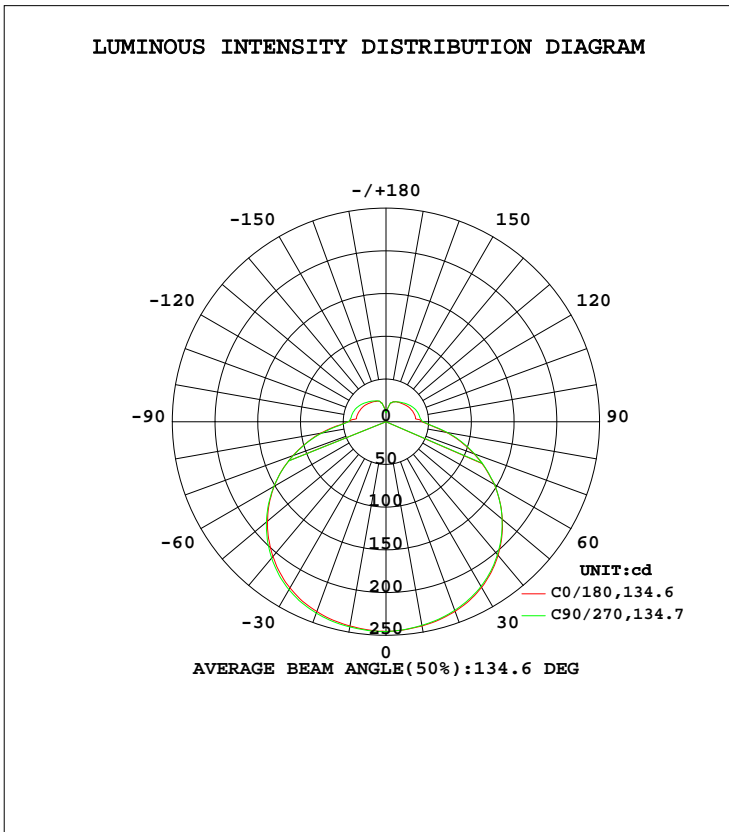


LUMINAIRE PHOTOMETRIC TEST REPORT

Test:U:120.1V I:0.1784A P:19.81W PF:0.9249 Lamp Flux:1130.38x1 lm		
NAME: ASD-LFC-LF-12D20-AC-BK/NK	TYPE:N/A	WEIGHT:N/A
SPEC.:N/A	DIM.: N/A	SERIAL No.:N/A
MFR.: ASD Lighting Corp	SUR.:N/A	Shielding Angle:N/A

DATA OF LAMP		PHOTOMETRIC DATA Eff: 57.06 lm/W			
MODEL	ASD-LFC-LF-12D20-AC-BK/NK	I _{max} (cd)	245.6	S/MH(C0/180)	1.36
NOMINAL POWER(W)		LOR(%)	100.0	S/MH(C90/270)	1.35
RATED VOLTAGE(V)	120	TOTAL FLUX(lm)	1130.4	η UP, DN(C0-180)	9.4,41.1
NOMINAL FLUX(lm)	1130.38	CIE CLASS	SEMI-D.	η UP, DN(C180-360)	9.2,40.3
LAMPS INSIDE	1	η up(%)	18.6	CIBSE SHR NOM	1.50
TEST VOLTAGE(V)	120	η down(%)	81.4	CIBSE SHR MAX	1.55



C Range: 0 - 360DEG
 C Interval: 22.5DEG
 Test Speed: HIGH
 Temperature:25.1DEG
 Operators:Evan
 Test Date:2022-11-21

γ Range: 0 - 180DEG
 γ Interval: 1.0DEG
 Test System:EVERFINE GO-R5000_V2 SYSTEM V2.0.351
 Humidity:44%
 Test Distance:2.532m [K=1.0000]
 Remarks:

ZONAL FLUX DIAGRAM

ZONAL FLUX DIAGRAM:

γ	C0	C45	C90	C135	C180	C225	C270	C315	γ	Φ zone	Φ total	%lum,lamp
10	242.7	243.4	243.9	243.7	242.7	242.1	242.0	242.2	0- 10	23.28	23.28	2.06,2.06
20	236.5	237.6	238.3	238.0	236.2	235.2	235.0	235.4	10- 20	67.95	91.23	8.07,8.07
30	224.7	226.1	227.0	226.3	223.9	222.7	222.4	223.1	20- 30	106.8	198.0	17.5,17.5
40	205.8	207.4	208.3	207.0	204.0	203.1	202.8	203.9	30- 40	135.1	333.1	29.5,29.5
50	181.1	182.1	182.7	180.9	177.8	177.3	177.4	178.6	40- 50	149.1	482.2	42.7,42.7
60	151.2	151.1	151.5	149.0	146.6	146.0	146.8	148.5	50- 60	147.4	629.7	55.7,55.7
70	115.8	115.1	115.2	112.3	109.5	110.0	110.4	112.2	60- 70	129.7	759.3	67.2,67.2
80	77.50	76.15	75.99	73.27	71.55	72.01	72.85	74.10	70- 80	98.83	858.2	75.9,75.9
90	44.38	44.06	44.42	42.98	42.49	43.34	43.74	43.88	80- 90	61.49	919.7	81.4,81.4
100	34.89	39.77	40.92	39.61	34.92	39.66	39.78	39.01	90-100	44.21	963.9	85.3,85.3
110	33.91	37.57	39.41	37.43	33.82	37.22	38.00	36.41	100-110	39.75	1004	88.8,88.8
120	32.62	35.24	36.92	35.12	32.23	34.46	35.42	33.92	110-120	35.12	1039	91.9,91.9
130	30.99	32.73	33.83	32.51	30.18	31.60	32.34	31.26	120-130	29.72	1068	94.5,94.5
140	28.94	30.32	30.89	29.92	28.29	28.89	29.35	28.84	130-140	23.75	1092	96.6,96.6
150	27.41	28.09	28.14	27.83	26.73	26.68	27.06	26.87	140-150	17.87	1110	98.2,98.2
160	25.65	25.95	26.09	25.63	25.15	24.00	24.67	24.56	150-160	12.19	1122	99.3,99.3
170	19.70	19.72	19.11	19.25	18.27	18.27	18.09	18.31	160-170	6.590	1129	99.9,99.9
180	11.51	11.03	11.09	11.18	12.52	12.21	13.07	12.84	170-180	1.511	1130	100,100
DEG	LUMINOUS INTENSITY:cd									UNIT:lm		

Conical surface Flux(90deg): 406.89 lm

%lum = 36.0%

%lamp = 36.0%

Conical surface Flux(120deg): 629.68 lm

%lum = 55.7%

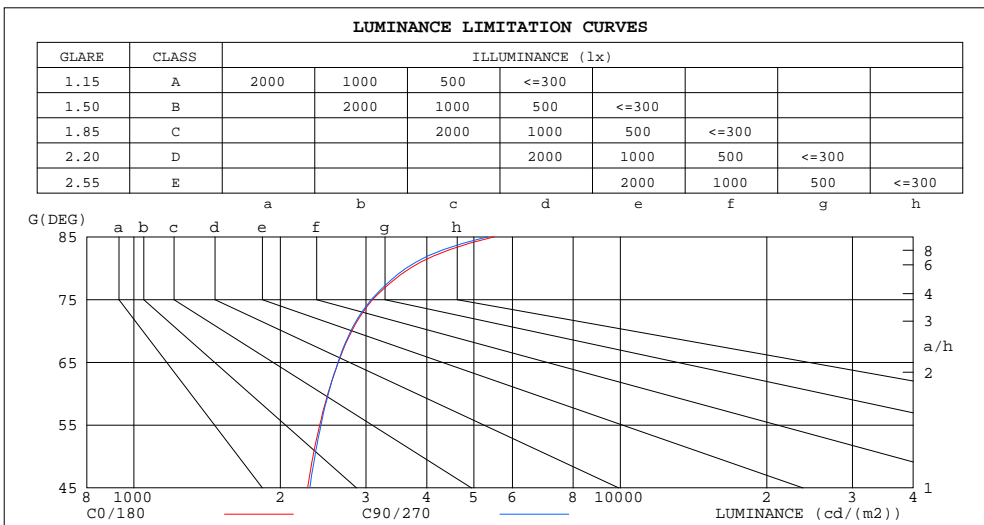
%lamp = 55.7%

C Range: 0 - 360DEG
 C Interval: 22.5DEG
 Test Speed: HIGH
 Temperature:25.1DEG
 Operators:Evan
 Test Date:2022-11-21

γ Range: 0 - 180DEG
 γ Interval: 1.0DEG
 Test System:EVERFINE GO-R5000_V2 SYSTEM V2.0.351
 Humidity:44%
 Test Distance:2.532m [K=1.0000]
 Remarks:

LUMINANCE LIMITATION CURVES

Test:U:120.1V I:0.1784A P:19.81W PF:0.9249 Lamp Flux:1130.38x1 lm		
NAME: ASD-LFC-LF-12D20-AC-BK/NK	TYPE:N/A	WEIGHT:N/A
SPEC.:N/A	DIM.: N/A	SERIAL No.:N/A
MFR.: ASD Lighting Corp	SUR.:N/A	Shielding Angle:N/A



LUMINANCE cd/(m2)		
G (DEG)	C0/180	C90/270
85	5506	5335
80	3699	3626
75	3095	3076
70	2806	2791
65	2631	2627
60	2506	2510
55	2411	2424
50	2335	2355
45	2276	2299

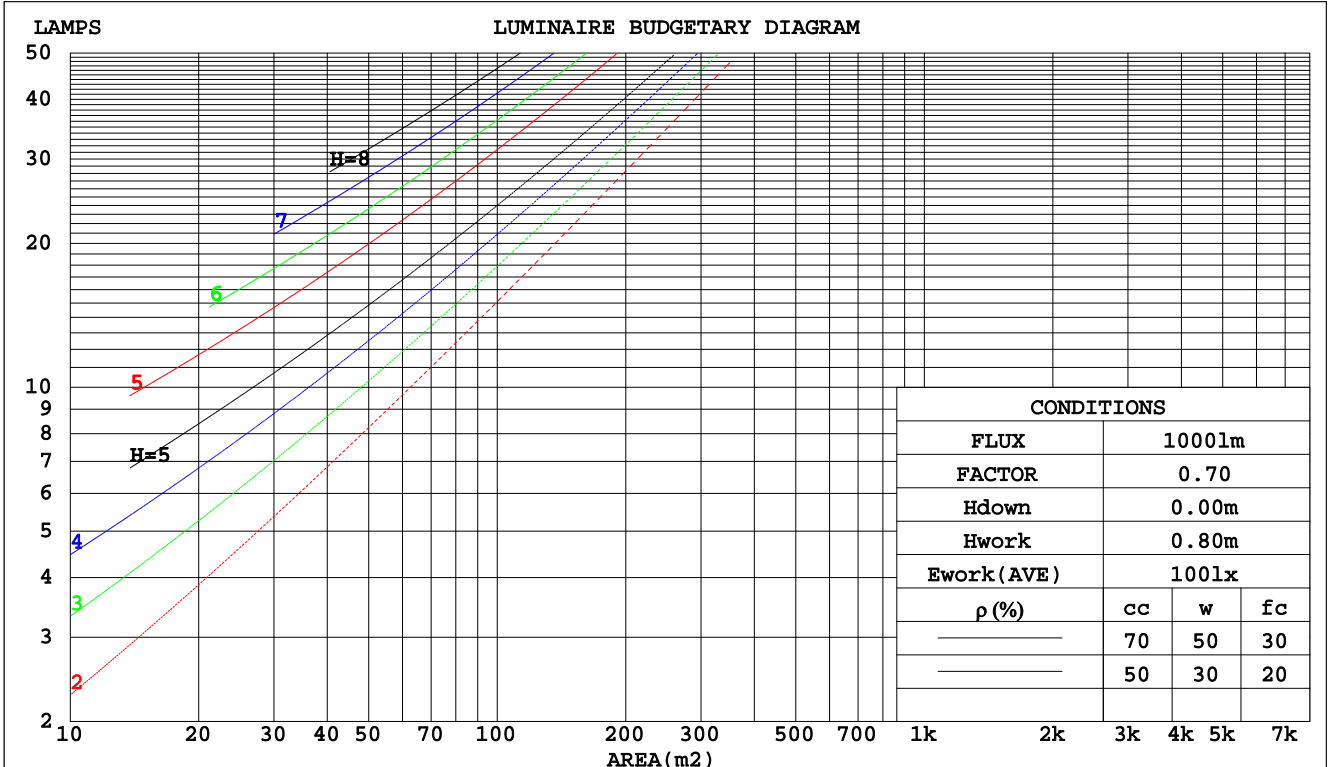
C Range: 0 - 360DEG
 C Interval: 22.5DEG
 Test Speed: HIGH
 Temperature: 25.1DEG
 Operators: Evan
 Test Date: 2022-11-21

γ Range: 0 - 180DEG
 γ Interval: 1.0DEG
 Test System: EVERFINE GO-R5000_V2 SYSTEM V2.0.351
 Humidity: 44%
 Test Distance: 2.532m [K=1.0000]
 Remarks:

CU AND LUMINAIRE BUDGETARY ESTIMATE DIAGRAM

Test:U:120.1V I:0.1784A P:19.81W PF:0.9249 Lamp Flux:1130.38x1 lm		
NAME: ASD-LFC-LF-12D20-AC-BK/NK	TYPE:N/A	WEIGHT:N/A
SPEC.:N/A	DIM.: N/A	SERIAL No.:N/A
MFR.: ASD Lighting Corp	SUR.:N/A	Shielding Angle:N/A

pcc	80%			70%			50%			30%			10%			0
pw	50%	30%	10%	50%	30%	10%	50%	30%	10%	50%	30%	10%	50%	30%	10%	0
pfc	20%			20%			20%			20%			20%			0
RCR	RCR:Room Cavity Ratio						Coefficients of Utilization(CU)									
0.0	1.15	1.15	1.15	1.10	1.10	1.10	1.01	1.01	1.01	.93	.93	.93	.85	.85	.85	.81
1.0	.97	.92	.87	.93	.88	.84	.85	.81	.78	.78	.75	.72	.71	.69	.67	.63
2.0	.83	.75	.69	.79	.73	.67	.73	.67	.62	.67	.62	.58	.61	.57	.54	.51
3.0	.72	.63	.56	.69	.61	.55	.63	.57	.51	.58	.53	.48	.53	.49	.45	.42
4.0	.63	.54	.47	.61	.52	.46	.56	.49	.43	.51	.45	.40	.47	.42	.38	.35
5.0	.56	.47	.40	.54	.45	.39	.50	.42	.37	.46	.39	.34	.42	.37	.32	.30
6.0	.50	.41	.34	.48	.40	.33	.44	.37	.32	.41	.35	.30	.38	.32	.28	.26
7.0	.45	.36	.30	.44	.35	.29	.40	.33	.28	.37	.31	.26	.34	.29	.25	.22
8.0	.41	.32	.26	.40	.31	.26	.37	.30	.25	.34	.28	.23	.31	.26	.22	.20
9.0	.38	.29	.24	.36	.28	.23	.34	.27	.22	.31	.25	.21	.29	.24	.20	.18
10.0	.34	.26	.21	.33	.26	.21	.31	.24	.20	.29	.23	.19	.27	.22	.18	.16



C Range: 0 - 360DEG
 C Interval: 22.5DEG
 Test Speed: HIGH
 Temperature:25.1DEG
 Operators:Evan
 Test Date:2022-11-21

γ Range: 0 - 180DEG
 γ Interval: 1.0DEG
 Test System:EVERFINE GO-R5000_V2 SYSTEM V2.0.351
 Humidity:44%
 Test Distance:2.532m [K=1.0000]
 Remarks:

WEC AND CCEC

Test:U:120.1V I:0.1784A P:19.81W PF:0.9249 Lamp Flux:1130.38x1 lm		
NAME: ASD-LFC-LF-12D20-AC-BK/NK	TYPE:N/A	WEIGHT:N/A
SPEC.:N/A	DIM.: N/A	SERIAL No.:N/A
MFR.: ASD Lighting Corp	SUR.:N/A	Shielding Angle:N/A

ρcc	80%			70%			50%			30%			10%			0
ρw	50%	30%	10%	50%	30%	10%	50%	30%	10%	50%	30%	10%	50%	30%	10%	0
ρfc	20%			20%			20%			20%			20%			0
RCR	RCR:Room Cavity Ratio						Wall Exitance Coefficients(WEC)									
0.0																
1.0	.361	.206	.065	.349	.199	.063	.325	.186	.059	.302	.174	.056	.282	.163	.053	
2.0	.321	.176	.054	.309	.170	.052	.287	.160	.050	.267	.150	.047	.249	.141	.044	
3.0	.288	.153	.046	.278	.149	.045	.258	.140	.042	.240	.131	.040	.223	.123	.038	
4.0	.261	.136	.040	.252	.132	.039	.234	.124	.037	.217	.117	.035	.202	.110	.033	
5.0	.238	.122	.035	.230	.118	.034	.214	.111	.033	.198	.105	.031	.184	.099	.030	
6.0	.219	.110	.031	.211	.107	.031	.197	.101	.029	.183	.095	.028	.170	.089	.027	
7.0	.203	.100	.028	.195	.097	.028	.182	.092	.026	.169	.087	.025	.157	.082	.024	
8.0	.188	.092	.026	.182	.089	.025	.169	.085	.024	.157	.080	.023	.146	.075	.022	
9.0	.176	.085	.024	.170	.083	.023	.158	.078	.022	.147	.074	.021	.137	.070	.020	
10.0	.165	.079	.022	.159	.077	.021	.148	.073	.020	.138	.069	.020	.129	.065	.019	

ρcc	80%			70%			50%			30%			10%			0
ρw	50%	30%	10%	50%	30%	10%	50%	30%	10%	50%	30%	10%	50%	30%	10%	0
ρfc	20%			20%			20%			20%			20%			0
RCR	RCR:Room Cavity Ratio						Ceiling Cavity Exitance Coefficients(CCEC)									
0.0	.333	.333	.333	.284	.284	.284	.194	.194	.194	.111	.111	.111	.036	.036	.036	
1.0	.327	.299	.273	.280	.257	.235	.191	.176	.163	.110	.102	.095	.035	.033	.031	
2.0	.320	.276	.239	.274	.238	.206	.188	.164	.144	.108	.096	.084	.035	.031	.027	
3.0	.313	.259	.217	.268	.224	.188	.184	.155	.132	.106	.091	.078	.034	.029	.025	
4.0	.305	.247	.202	.262	.213	.176	.180	.149	.124	.104	.087	.073	.034	.028	.024	
5.0	.298	.237	.192	.256	.205	.167	.176	.143	.118	.102	.084	.070	.033	.027	.023	
6.0	.291	.229	.185	.250	.198	.161	.172	.139	.114	.100	.082	.068	.032	.027	.022	
7.0	.284	.222	.180	.244	.193	.156	.169	.135	.111	.098	.080	.066	.032	.026	.022	
8.0	.277	.217	.176	.239	.188	.153	.165	.132	.109	.096	.078	.065	.031	.026	.021	
9.0	.271	.212	.172	.233	.184	.150	.162	.129	.107	.094	.076	.064	.031	.025	.021	
10.0	.265	.208	.170	.229	.181	.148	.159	.127	.105	.093	.075	.063	.030	.025	.021	

C Range: 0 - 360DEG
 C Interval: 22.5DEG
 Test Speed: HIGH
 Temperature:25.1DEG
 Operators:Evan
 Test Date:2022-11-21

γ Range: 0 - 180DEG
 γ Interval: 1.0DEG
 Test System:EVERFINE GO-R5000_V2 SYSTEM V2.0.351
 Humidity:44%
 Test Distance:2.532m [K=1.0000]
 Remarks:

UGR(Unified Glare Rating) Table

Test:U:120.1V I:0.1784A P:19.81W PF:0.9249 Lamp Flux:1130.38x1 lm										
NAME: ASD-LFC-LF-12D20-AC-BK/NK					TYPE:N/A			WEIGHT:N/A		
SPEC.:N/A					DIM.: N/A			SERIAL No.:N/A		
MFR.: ASD Lighting Corp					SUR.:N/A			Shielding Angle:N/A		
ceiling/cavity	0.7	0.7	0.5	0.5	0.3	0.7	0.7	0.5	0.5	0.3
walls	0.5	0.3	0.5	0.3	0.3	0.5	0.3	0.5	0.3	0.3
working plane	0.2	0.2	0.2	0.2	0.2	0.2	0.2	0.2	0.2	0.2
Room dimensions	Viewed crosswise					Viewed endwise				
x = 2H y = 2H	15.0	16.3	15.5	16.9	17.4	15.0	16.4	15.5	16.9	17.5
3H	17.1	18.4	17.7	18.9	19.5	17.1	18.4	17.7	18.9	19.5
4H	18.2	19.3	18.7	19.9	20.5	18.2	19.3	18.7	19.9	20.5
6H	19.2	20.3	19.8	20.9	21.6	19.2	20.3	19.8	20.9	21.5
8H	19.7	20.8	20.3	21.4	22.1	19.7	20.8	20.3	21.4	22.0
12H	20.3	21.3	20.9	21.9	22.6	20.2	21.2	20.8	21.9	22.5
4H 2H	15.7	16.9	16.3	17.5	18.1	15.7	16.9	16.3	17.5	18.1
3H	18.0	19.0	18.6	19.7	20.3	18.0	19.1	18.6	19.7	20.3
4H	19.2	20.2	19.9	20.8	21.5	19.2	20.2	19.9	20.8	21.5
6H	20.4	21.3	21.1	21.9	22.7	20.4	21.3	21.1	21.9	22.7
8H	21.1	21.8	21.7	22.5	23.3	21.0	21.8	21.7	22.5	23.2
12H	21.7	22.4	22.4	23.1	23.9	21.6	22.4	22.3	23.0	23.8
8H 4H	19.7	20.4	20.3	21.1	21.9	19.7	20.4	20.3	21.1	21.9
6H	21.1	21.8	21.8	22.5	23.3	21.1	21.8	21.8	22.5	23.3
8H	21.9	22.5	22.6	23.2	24.0	21.9	22.4	22.6	23.2	24.0
12H	22.8	23.3	23.5	24.0	24.8	22.7	23.2	23.4	23.9	24.8
12H 4H	19.7	20.5	20.4	21.1	21.9	19.7	20.5	20.4	21.1	21.9
6H	21.3	21.9	22.0	22.6	23.4	21.3	21.9	22.0	22.6	23.4
8H	22.2	22.7	22.9	23.4	24.3	22.1	22.6	22.9	23.4	24.2
Variations with the observer position at spacings:										
S = 1.0H	+ 0.1 / - 0.1					+ 0.1 / - 0.1				
1.5H	+ 0.2 / - 0.3					+ 0.2 / - 0.3				
2.0H	+ 0.2 / - 0.4					+ 0.2 / - 0.4				

CIE Pub.117 Corrected 1130 lm Total Lamp Luminous Flux.(8log(F/F0) = 0.4)

C Range: 0 - 360DEG
 C Interval: 22.5DEG
 Test Speed: HIGH
 Temperature:25.1DEG
 Operators:Evan
 Test Date:2022-11-21

γ Range: 0 - 180DEG
 γ Interval: 1.0DEG
 Test System:EVERFINE GO-R5000_V2 SYSTEM V2.0.351
 Humidity:44%
 Test Distance:2.532m [K=1.0000]
 Remarks:

UTILIZATION FACTORS TABLE

Test:U:120.1V I:0.1784A P:19.81W PF:0.9249 Lamp Flux:1130.38x1 lm		
NAME: ASD-LFC-LF-12D20-AC-BK/NK	TYPE:N/A	WEIGHT:N/A
SPEC.:N/A	DIM.: N/A	SERIAL No.:N/A
MFR.: ASD Lighting Corp	SUR.:N/A	Shielding Angle:N/A

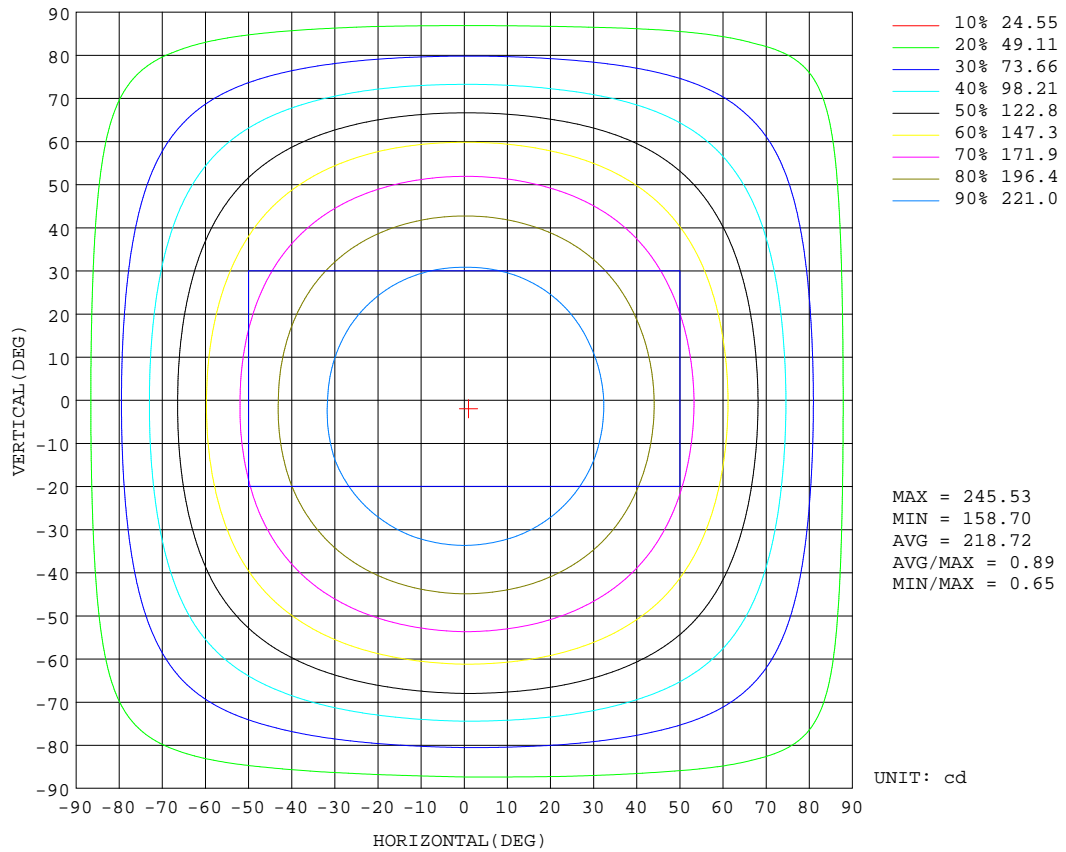
REFLECTANCE										
Ceiling	0.8	0.8	0.8	0.7	0.7	0.7	0.5	0.5	0.5	0
Walls	0.7	0.5	0.3	0.7	0.5	0.3	0.7	0.5	0.3	0
Working plane	0.2	0.2	0.2	0.2	0.2	0.2	0.2	0.2	0.2	0
ROOM INDEX	UTILIZATION FACTORS(PERCENT) $k(RI) \times RCR = 5$									
k = 0.60	48	36	29	47	36	29	45	34	28	21
0.80	58	45	37	56	44	37	53	42	36	28
1.00	66	53	45	64	52	44	60	52	43	34
1.25	73	60	52	70	59	51	66	56	49	40
1.50	78	66	58	75	64	57	70	61	54	44
2.00	85	75	67	82	72	65	76	68	62	50
2.50	90	80	72	86	77	71	80	73	67	54
3.00	93	85	78	90	82	75	83	76	71	58
4.00	98	91	84	94	87	82	87	81	77	62
5.00	101	94	89	97	91	86	89	84	80	65
ROOM INDEX	UF(total)									Direct
According to DIN EN 13032-2 2004			Suspended				SHRNOM = 1.25			

C Range: 0 - 360DEG
 C Interval: 22.5DEG
 Test Speed: HIGH
 Temperature:25.1DEG
 Operators:Evan
 Test Date:2022-11-21

γ Range: 0 - 180DEG
 γ Interval: 1.0DEG
 Test System:EVERFINE GO-R5000_V2 SYSTEM V2.0.351
 Humidity:44%
 Test Distance:2.532m [K=1.0000]
 Remarks:

ISOCANDELA DIAGRAM

Test:U:120.1V I:0.1784A P:19.81W PF:0.9249 Lamp Flux:1130.38x1 lm		
NAME: ASD-LFC-LF-12D20-AC-BK/NK	TYPE:N/A	WEIGHT:N/A
SPEC.:N/A	DIM.: N/A	SERIAL No.:N/A
MFR.: ASD Lighting Corp	SUR.:N/A	Shielding Angle:N/A

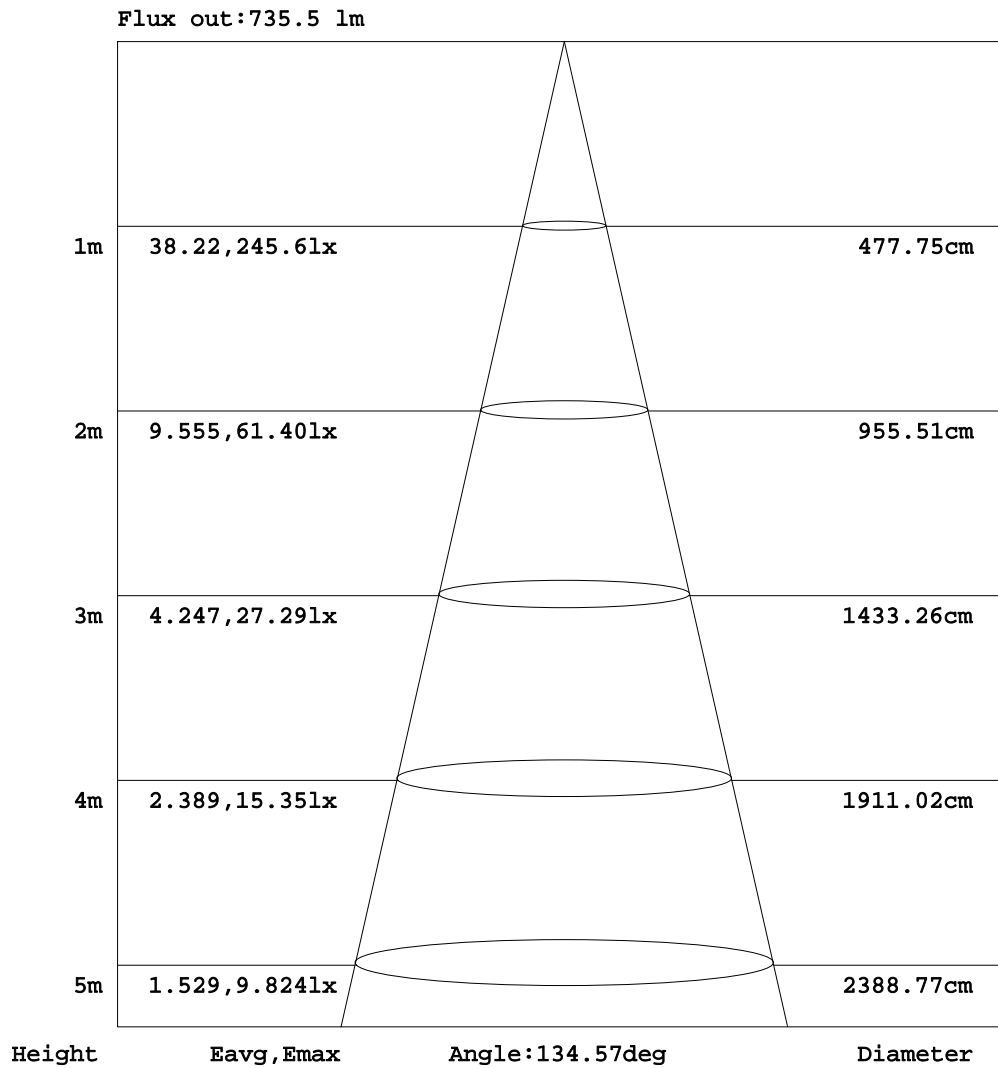


C Range: 0 - 360DEG
 C Interval: 22.5DEG
 Test Speed: HIGH
 Temperature:25.1DEG
 Operators:Evan
 Test Date:2022-11-21

γ Range: 0 - 180DEG
 γ Interval: 1.0DEG
 Test System:EVERFINE GO-R5000_V2 SYSTEM V2.0.351
 Humidity:44%
 Test Distance:2.532m [K=1.0000]
 Remarks:

AAI Figure

Test:U:120.1V I:0.1784A P:19.81W PF:0.9249 Lamp Flux:1130.38x1 lm		
NAME: ASD-LFC-LF-12D20-AC-BK/NK	TYPE:N/A	WEIGHT:N/A
SPEC.:N/A	DIM.: N/A	SERIAL No.:N/A
MFR.: ASD Lighting Corp	SUR.:N/A	Shielding Angle:N/A



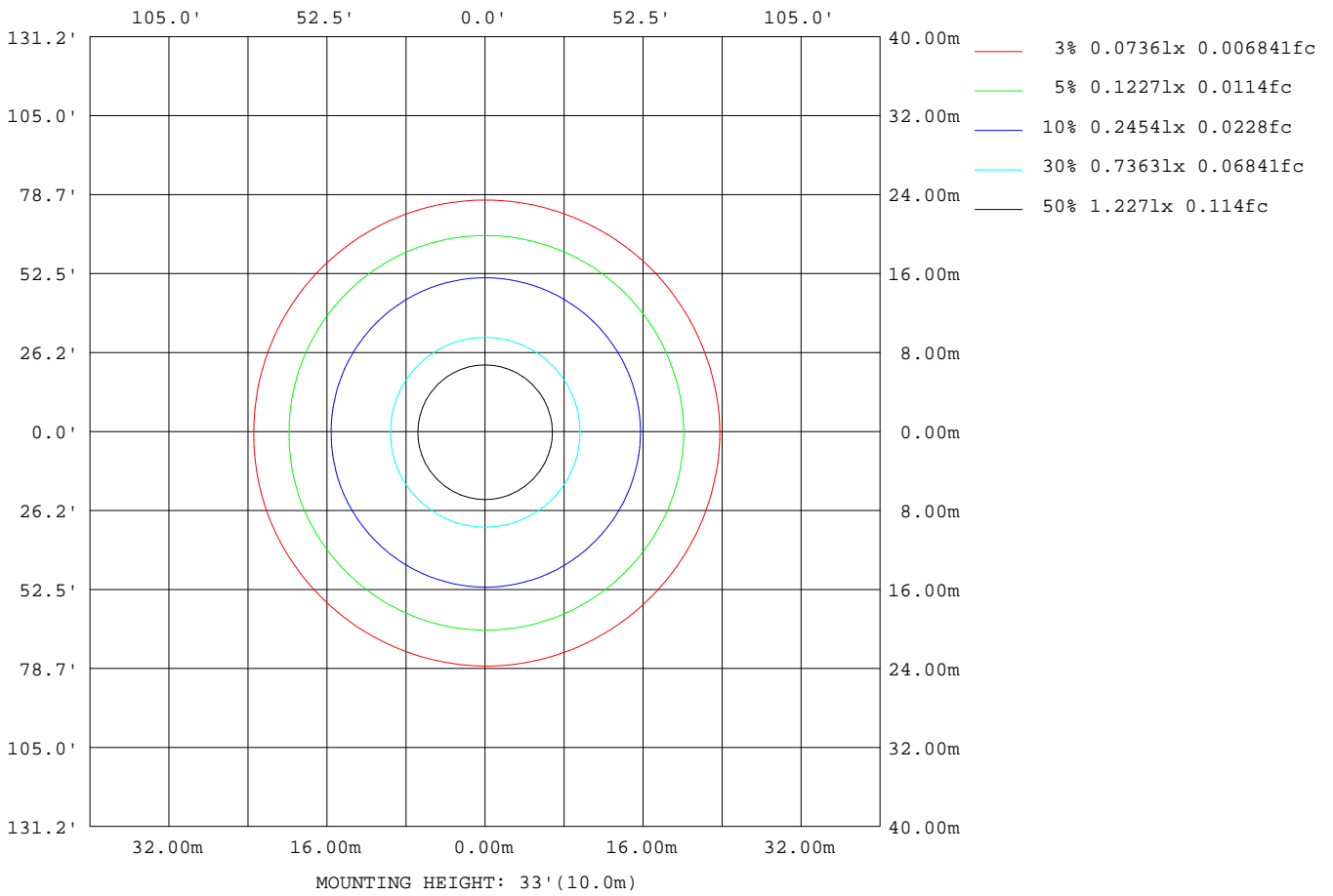
Note:The Curves indicate the illuminated area and the average illumination when the luminaire is at different distance.

C Range: 0 - 360DEG
 C Interval: 22.5DEG
 Test Speed: HIGH
 Temperature:25.1DEG
 Operators:Evan
 Test Date:2022-11-21

γ Range: 0 - 180DEG
 γ Interval: 1.0DEG
 Test System:EVERFINE GO-R5000_V2 SYSTEM V2.0.351
 Humidity:44%
 Test Distance:2.532m [K=1.0000]
 Remarks:

ISOLUX DIAGRAM

Test:U:120.1V I:0.1784A P:19.81W PF:0.9249 Lamp Flux:1130.38x1 lm		
NAME: ASD-LFC-LF-12D20-AC-BK/NK	TYPE:N/A	WEIGHT:N/A
SPEC.:N/A	DIM.: N/A	SERIAL No.:N/A
MFR.: ASD Lighting Corp	SUR.:N/A	Shielding Angle:N/A



C Range: 0 - 360DEG
 C Interval: 22.5DEG
 Test Speed: HIGH
 Temperature:25.1DEG
 Operators:Evan
 Test Date:2022-11-21

γ Range: 0 - 180DEG
 γ Interval: 1.0DEG
 Test System:EVERFINE GO-R5000_V2 SYSTEM V2.0.351
 Humidity:44%
 Test Distance:2.532m [K=1.0000]
 Remarks:

LED Avg.L Report

Test:U:120.1V I:0.1784A P:19.81W PF:0.9249 Lamp Flux:1130.38x1 lm		
NAME: ASD-LFC-LF-12D20-AC-BK/NK	TYPE:N/A	WEIGHT:N/A
SPEC.:N/A	DIM.: N/A	SERIAL No.:N/A
MFR.: ASD Lighting Corp	SUR.:N/A	Shielding Angle:N/A

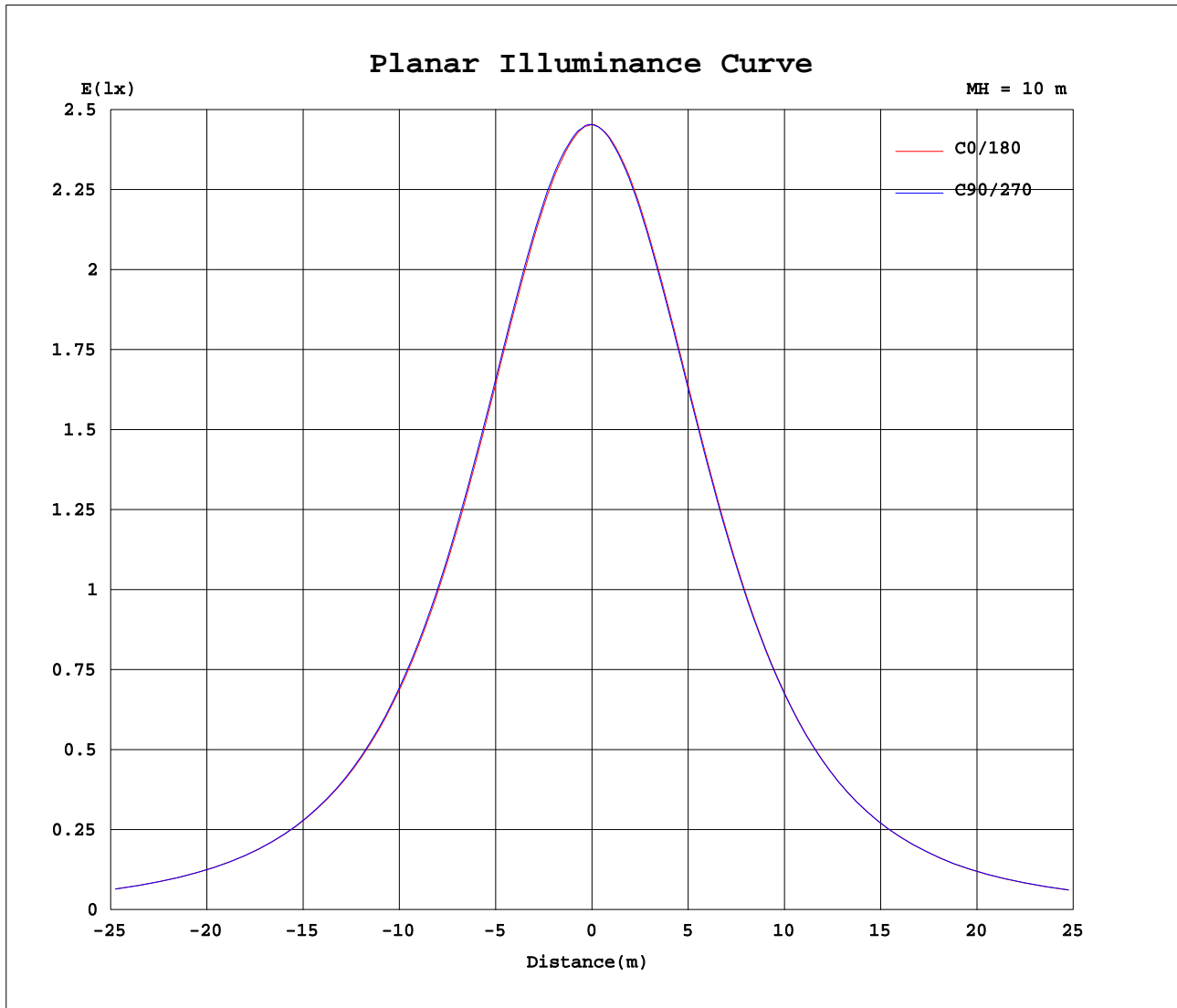
AvgL	cd/m2
L_0~180(65)av	2571
L_0~180(75)av	3001
L_0~180(85)av	5287
L_90~270(65)av	2575
L_90~270(75)av	3009
L_90~270(85)av	5255
L_45(65)av	2568
L_45(75)av	2994
L_45(85)av	5199

Standard: GB/T 29293-2012

C Range: 0 - 360DEG
C Interval: 22.5DEG
Test Speed: HIGH
Temperature:25.1DEG
Operators:Evan
Test Date:2022-11-21

γ Range: 0 - 180DEG
 γ Interval: 1.0DEG
Test System:EVERFINE GO-R5000_V2 SYSTEM V2.0.351
Humidity:44%
Test Distance:2.532m [K=1.0000]
Remarks:

Planar Illuminance Curve



C Range: 0 - 360DEG
 C Interval: 22.5DEG
 Test Speed: HIGH
 Temperature: 25.1DEG
 Operators: Evan
 Test Date: 2022-11-21

γ Range: 0 - 180DEG
 γ Interval: 1.0DEG
 Test System: EVERFINE GO-R5000_V2 SYSTEM V2.0.351
 Humidity: 44%
 Test Distance: 2.532m [K=1.0000]
 Remarks:

LUMINOUS DISTRIBUTION INTENSITY DATA

Test:U:120.1V I:0.1784A P:19.81W PF:0.9249 Lamp Flux:1130.38x1 lm		
NAME: ASD-LFC-LF-12D20-AC-BK/NK	TYPE:N/A	WEIGHT:N/A
SPEC.:N/A	DIM.: N/A	SERIAL No.:N/A
MFR.: ASD Lighting Corp	SUR.:N/A	Shielding Angle:N/A

Table--1

UNIT: cd

C(DEG)\ γ (DEG)	0	22.5	45	67.5	90	112.5	135	157.5	180	202.5	225	247.5	270	292.5	315	337.5			
0	245	245	245	245	245	245	245	245	245	245	245	245	245	245	245	245			
5	244	245	245	245	245	245	245	245	244	244	244	244	244	244	244	244			
10	243	243	243	244	244	244	244	243	243	242	242	242	242	242	242	242			
15	240	241	241	242	242	242	242	241	240	239	239	239	239	239	239	239			
20	236	237	238	238	238	238	238	237	236	236	235	235	235	235	235	236			
25	232	232	233	233	234	233	233	232	231	230	230	229	230	230	230	230			
30	225	225	226	227	227	227	226	225	224	223	223	222	222	223	223	224			
35	216	217	218	218	219	218	218	217	215	214	214	213	214	214	214	215			
40	206	207	207	208	208	208	207	206	204	203	203	203	203	203	204	204			
45	194	195	195	196	196	195	195	194	192	191	191	191	191	191	192	192			
50	181	182	182	183	183	182	181	180	178	177	177	177	177	178	179	179			
55	167	167	167	168	168	167	166	165	163	162	162	162	163	163	164	165			
60	151	151	151	152	151	150	149	148	147	146	146	147	147	147	148	150			
65	134	134	134	134	134	133	131	130	128	128	128	129	129	129	130	132			
70	116	115	115	115	115	114	112	112	109	109	110	110	110	111	112	113			
75	96.7	96.1	95.9	96.3	96.1	94.6	93.2	92.5	90.8	90.9	91.5	91.8	91.8	92.1	93.5	94.5			
80	77.5	76.7	76.2	76.4	76.0	74.6	73.3	72.9	71.5	71.6	72.0	72.6	72.8	73.1	74.1	75.0			
85	57.9	56.9	56.0	56.3	56.1	54.9	53.9	53.6	53.3	53.2	53.8	54.4	54.4	54.5	55.0	55.5			
90	44.4	44.1	44.1	44.4	44.4	43.7	43.0	42.7	42.5	42.8	43.3	43.7	43.7	43.7	43.9	43.9			
95	36.5	40.6	41.0	41.6	41.7	41.1	40.5	40.1	36.3	40.3	40.7	40.9	40.7	40.5	40.4	40.1			
100	34.9	38.1	39.8	40.6	40.9	40.2	39.6	38.4	34.9	38.2	39.7	39.9	39.8	39.2	39.0	37.4			
105	34.4	35.8	38.7	39.9	40.3	39.5	38.6	36.1	34.4	35.6	38.4	39.1	39.0	38.4	37.7	34.9			
110	33.9	34.3	37.6	38.9	39.4	38.7	37.4	34.3	33.8	34.1	37.2	38.0	38.0	37.3	36.4	33.3			
115	33.3	33.7	36.5	37.7	38.3	37.5	36.3	33.4	33.0	33.1	35.9	36.7	36.8	36.1	35.2	32.4			
120	32.6	32.9	35.2	36.5	36.9	36.3	35.1	32.6	32.2	32.2	34.5	35.3	35.4	34.8	33.9	31.7			
125	31.9	32.2	33.9	35.3	35.5	35.0	33.8	31.8	31.3	31.1	33.0	34.0	33.9	33.6	32.5	31.0			
130	31.0	31.3	32.7	34.0	33.8	33.6	32.5	30.9	30.2	30.2	31.6	32.5	32.3	32.2	31.3	30.2			
135	29.9	30.4	31.5	32.5	32.3	32.0	31.2	29.9	29.2	29.1	30.3	30.9	30.8	30.8	30.0	29.3			
140	28.9	29.4	30.3	31.0	30.9	30.6	29.9	29.0	28.3	28.2	28.9	29.5	29.4	29.4	28.8	28.3			
145	28.2	28.5	29.1	29.7	29.5	29.5	28.8	28.2	27.6	27.3	27.8	28.4	28.2	28.2	27.8	27.5			
150	27.4	27.5	28.1	28.4	28.1	28.2	27.8	27.2	26.7	26.3	26.7	27.1	27.1	27.2	26.9	26.5			
155	26.5	26.6	27.0	27.4	27.2	27.1	26.7	26.4	26.1	25.6	25.5	25.8	25.6	25.6	25.6	25.6			
160	25.6	25.8	26.0	26.1	26.1	25.9	25.6	25.1	25.2	24.2	24.0	24.4	24.7	24.6	24.6	24.6			
165	23.5	24.0	24.1	23.9	23.2	23.1	23.8	23.4	22.8	22.7	22.8	23.1	23.3	23.1	23.1	23.1			
170	19.7	19.7	19.7	19.4	19.1	19.4	19.3	19.0	18.3	18.3	18.3	18.2	18.1	18.0	18.3	19.0			
175	15.4	15.5	15.4	15.0	14.6	15.0	14.5	14.4	14.2	14.3	14.1	14.0	14.2	13.7	14.1	14.7			
180	11.5	11.4	11.0	11.6	11.1	11.9	11.2	10.1	12.5	12.5	12.2	12.5	13.1	12.8	12.8	12.2			

C Range: 0 - 360DEG
 C Interval: 22.5DEG
 Test Speed: HIGH
 Temperature:25.1DEG
 Operators:Evan
 Test Date:2022-11-21

γ Range: 0 - 180DEG
 γ Interval: 1.0DEG
 Test System:EVERFINE GO-R5000_V2 SYSTEM V2.0.351
 Humidity:44%
 Test Distance:2.532m [K=1.0000]
 Remarks: