



LED OUTDOOR WALL SCONCE

► **DESIGN & OPTIONS** - LED OUTDOOR WALL SCONCE has a modern, multipurpose design with efficient lighting. The durable aluminum base is highly resistant to rust. The clear seeded glass shade filled with air bubbles creates a luxurious glow. The acrylic glass creates a peaceful and elegant atmosphere. The modern LED dimmers provide smooth dimming capabilities from 10% to 100%, while the 160° beam angle grants you smooth and even lighting. It is also CCT selectable, letting you set it to 3,000K, 4,000K, or 5,000K with a simple switch. It comes in a BLACK finish.

► **INSTALLATION** - Installation is quick and easy: just attach the mounting plate to the outlet box with screws, connect the wires, and fasten the fixture to the mounting plate. All necessary installation accessories are provided. Refer to install instructions for detailed steps.

► **APPLICATION** - This LED OUTDOOR WALL SCONCE is an ideal maintenance-free solution for residential and commercial applications. It creates a cozy ambience that is great for indoor and outdoor projects such as decks, front doors, porches, gardens, corridors, balconies, villas, and walkways. The fixture is Wet Locations rated and suitable for severe weather conditions.

► **ENERGY SAVINGS & EFFICIENCY** - With a lifespan of 50,000 hours, these fixtures are made to last decades under normal operation! This fixture can cut your electric bill by up to 80% instantly and will save you a significant amount of money in its lifetime.

► **CERTIFICATION & WARRANTY** - Buy with confidence: ASD provides a 5-year limited warranty along with ETL certification to guarantee top quality products and safety!

Catalog number	
Notes	
Type	



Model	Size	Watts	Voltage	Dimmable	Lumens	CCT	Finish	Dimensions (LxWxH)
ASD-LWS24S-14D12CC-BK	14 inch	12W	120 V	TRIAC	408/463/415 lm	3CCT (3,000/4,000/5,000 K)	Black	4-3/4" x 5" x 13-7/8"
ASD-LWS24W-14D12CC-BK	14 inch	12W	120 V	TRIAC	666/737/709 lm	3CCT (3,000/4,000/5,000 K)	Black	4-3/4" x 5" x 13-7/8"

ORDERING INFORMATION

Model	UPC	Pcs. per carton	Carton size	Carton weight	GTIN 14
ASD-LWS24S-14D12CC-BK	810050734837	4	14.4" x 13.6" x 16.3"	17.9 lb	30810050734838
ASD-LWS24W-14D12CC-BK	810050734844	4	13.6" x 13.6" x 16.3"	26.1 lb	30810050734845

For most up-to-date spec sheets please refer to asd-lighting.com

ASD LIGHTING CORP

E-mail: orders@asd-lighting.com | Web site: www.asd-lighting.com





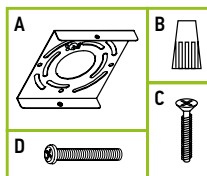
LED OUTDOOR WALL SCONCE

PRODUCT SPECIFICATIONS:

Construction & Materials			
Housing	Aluminum		
Lens	Clear seeded glass, White acrylic glass		
Finish	Black		
Weight	ASD-LWS24S-14D12CC-BK	3.9 lb (1.8 kg)	
	ASD-LWS24W-14D12CC-BK	5.7 lb (2.6 kg)	
Environmental system			
Work environment	Suitable for Wet Locations		
Operating temperature	-4°F to 122°F (-20°C to 50°C)		
L-70 Life	> 50,000 hrs		
Optical system			
Luminous flux	ASD-LWS24S-14D12CC-BK	408/463/415 lm	
	ASD-LWS24W-14D12CC-BK	666/737/709 lm	
Color temperature	3CCT (3,000/4,000/5,000 K)		
CRI	> 80		
Electrical system			
Input voltage	120 V		
Max input current	0.16 A		
Inrush current (Action time)	0.1 A (0.1 S)		
Off state power	0W		
Power consumption	12W		
Power factor	> 0.9		
Output voltage	36 V		
Max output current	0.3 A		
Surge protection DM/CM	1.25 kV / 1.25 kV		
Dimming range			
10-100%			
Dimming compatible controls			
Brand	Lutron		Leviton
Models	TGCL-153P	MACL-153MLH	DSL06
	CTCL-153P	DVCL-153PR	RNL06
	P-PKG1W	STCL-153PH	
	PD-6WCL		
Regular and voluntary certifications			
5-year limited warranty			
cETLus certified 4001256			

PACKAGE CONTENTS:

Description	Q-ty
LED Outdoor Wall Sconce	1
Mounting plate (A)	1
Wire nut (B)	3
Black screw (C)	2
Mounting screw (D)	2
Box	1



INSTALLATION GUIDE

IMPORTANT SAFETY INFORMATION:

Please read all the instructions below before installation.

- Make sure that the supply voltage corresponds to the rated product voltage.
- The product must be installed by a qualified electrician in accordance with the National Electrical Code and corresponding local codes.
- If the product is damaged, do not use it.

⚠ WARNING

RISK OF PERSONAL INJURY – READ and follow all WARNINGS and installation instructions. Keep or give to the owner for future reference.

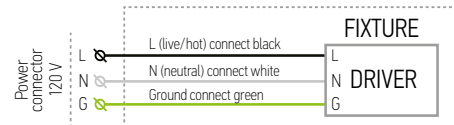
Risk of cuts: Wear gloves to prevent cuts or abrasions when removing from carton, handling, installing, and maintaining this product.

Risk of electric shock: This product must be installed in accordance with the applicable installation code by a person familiar with the construction and operation of the product and the hazards involved.

Risk of Fire: Minimum 194°F supply conductors. Consult a qualified electrician to ensure correct branch circuit conductor.

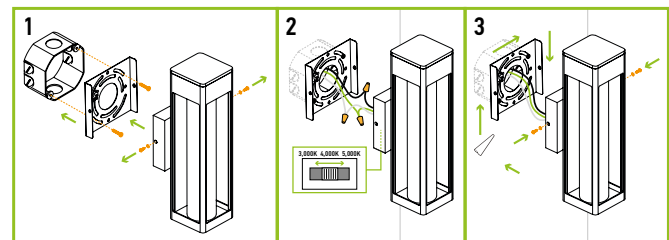
ASD® assumes no responsibility for claims arising out of improper or careless Installation or handling of this product.

ELECTRICAL SCHEMATIC DIAGRAM:



INSTALLATION STEPS:

- Remove the mounting plate by unscrewing the screws from both sides of the fixture. Screw the two mounting screws onto the mounting plate. Attach the mounting plate to the outlet box using screws.
- Choose needed color temperature by adjusting switch position. Connect the wires: Black to Black, White to White, Ground to Ground. Secure the connection with the wire nuts.
- Attach the fixture to the mounting plate with screws. Before tightening the screws, try to fit the fixture to ensure the appropriate holes match. For outdoor locations it is recommended to use silicone (not included) shown in the picture below.



For most up-to-date spec sheets please refer to asd-lighting.com

ASD LIGHTING CORP

E-mail: orders@asd-lighting.com | Web site: www.asd-lighting.com

