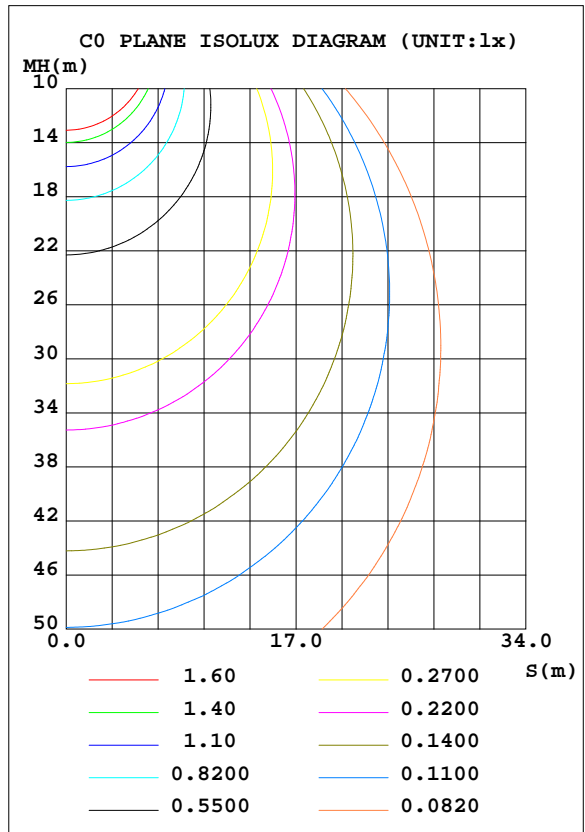
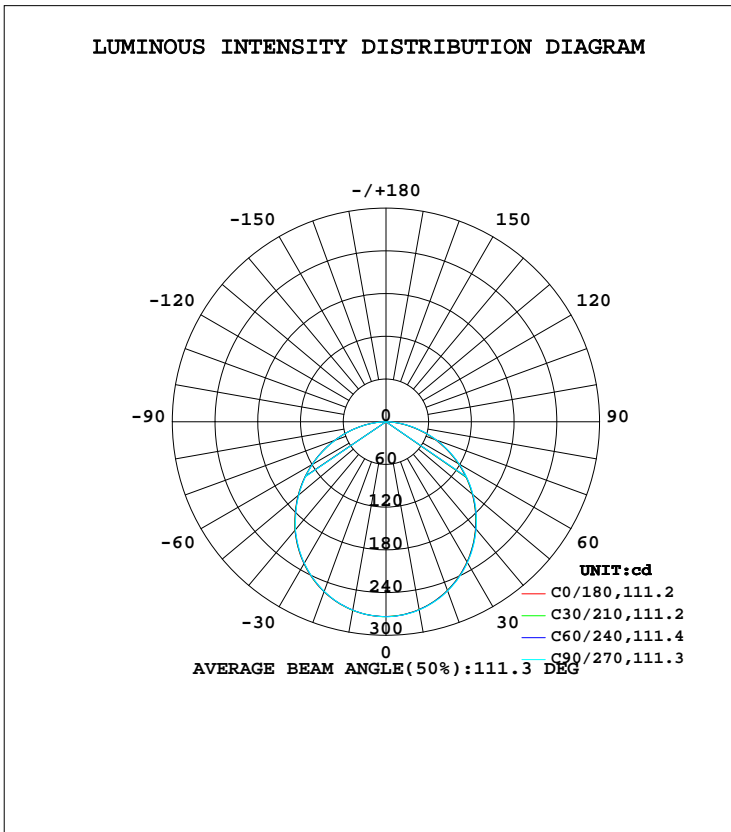


LUMINAIRE PHOTOMETRIC TEST REPORT

Test:U:120.00V I:0.0908A P:10.630W PF:0.9757 Freq:60.00Hz Lamp Flux:777.24lx1 lm		
NAME:	TYPE:LED	WEIGHT:
SPEC.:ASD-MPR-5D10CC_4000K	DIM.:	SERIAL No.:
MFR.: ASD Lighting Corp	SUR.:	Shielding Angle:

DATA OF LAMP		PHOTOMETRIC DATA Eff: 73.12 lm/W			
MODEL	ASD-MPR-5D10CC_4000K	I _{max} (cd)	274.1	S/MH(C0/180)	1.25
NOMINAL POWER(W)		LOR(%)	100.0	S/MH(C90/270)	1.24
RATED VOLTAGE(V)	120	TOTAL FLUX(lm)	777.24	η UP, DN(C0-180)	0.0,49.8
NOMINAL FLUX(lm)	777.241	CIE CLASS	DIRECT	η UP, DN(C180-360)	0.1,50.1
LAMPS INSIDE	1	η up(%)	0.1	CIBSE SHR NOM	1.25
TEST VOLTAGE(V)	120	η down(%)	99.9	CIBSE SHR MAX	1.35



C Range: 0 - 360DEG
 C Interval: 15.0DEG
 Test Speed: HIGH
 Temperature: 25.0DEG
 Operators: Alan Wang
 Test Date: 24 May 2023

γ Range: 0 - 180DEG
 γ Interval: 1.0DEG
 Test System: EVERFINE GO-R5000_V2 SYSTEM V2.00.416
 Humidity: 44.9%
 Test Distance: 2.500m [K=1.0391]
 Remarks:

ZONAL FLUX DIAGRAM

ZONAL FLUX DIAGRAM:

γ	C0	C45	C90	C135	C180	C225	C270	C315	γ	Φ zone	Φ total	%lum,lamp
10	267.8	267.9	268.2	268.9	269.0	269.0	268.6	268.6	0- 10	25.88	25.88	3.33,3.33
20	252.2	252.3	253.0	253.5	254.1	254.0	253.5	253.3	10- 20	73.95	99.83	12.8,12.8
30	227.5	228.0	228.6	229.5	230.3	230.1	229.2	228.9	20- 30	111.6	211.4	27.2,27.2
40	195.8	196.0	197.0	198.0	198.9	198.7	197.9	197.3	30- 40	133.9	345.3	44.4,44.4
50	158.3	158.7	159.8	160.6	161.0	160.7	159.8	159.1	40- 50	138.1	483.4	62.2,62.2
60	117.0	117.7	118.7	119.2	119.7	119.7	118.9	117.9	50- 60	124.7	608.1	78.2,78.2
70	73.48	74.58	75.80	75.95	76.50	76.80	76.01	74.57	60- 70	96.20	704.3	90.6,90.6
80	30.75	32.17	33.22	33.25	33.97	34.19	33.30	31.80	70- 80	56.84	761.2	97.9,97.9
90	0.0283	0.0289	0.0374	0.0391	0.0699	0.0615	0.0539	0.0529	80- 90	15.31	776.5	99.9,99.9
100	0.0436	0.0453	0.0433	0.0417	0.0825	0.0835	0.0841	0.0855	90-100	0.0559	776.5	99.9,99.9
110	0.0695	0.0716	0.0692	0.0663	0.1041	0.1051	0.1054	0.1077	100-110	0.0812	776.6	99.9,99.9
120	0.1040	0.1080	0.1047	0.1024	0.1130	0.1130	0.1146	0.1160	110-120	0.0976	776.7	99.9,99.9
130	0.1363	0.1444	0.1398	0.1382	0.1402	0.1393	0.1400	0.1439	120-130	0.1110	776.8	99.9,99.9
140	0.1576	0.1659	0.1642	0.1596	0.1783	0.1761	0.1764	0.1768	130-140	0.1203	776.9	100,100
150	0.1685	0.1727	0.1717	0.1711	0.2204	0.2164	0.2159	0.2178	140-150	0.1138	777.1	100,100
160	0.1980	0.1993	0.1993	0.1993	0.2480	0.2437	0.2431	0.2450	150-160	0.0961	777.2	100,100
170	0.2158	0.2181	0.2197	0.2181	0.2470	0.2450	0.2434	0.2443	160-170	0.0645	777.2	100,100
180	0.2338	0.2319	0.2315	0.2325	0.2338	0.2325	0.2322	0.2335	170-180	0.0222	777.2	100,100
DEG	LUMINOUS INTENSITY:cd									UNIT:lm		

Conical surface Flux(90deg): 414.95 lm

%lum = 53.4%

%lamp = 53.4%

Conical surface Flux(120deg): 608.12 lm

%lum = 78.2%

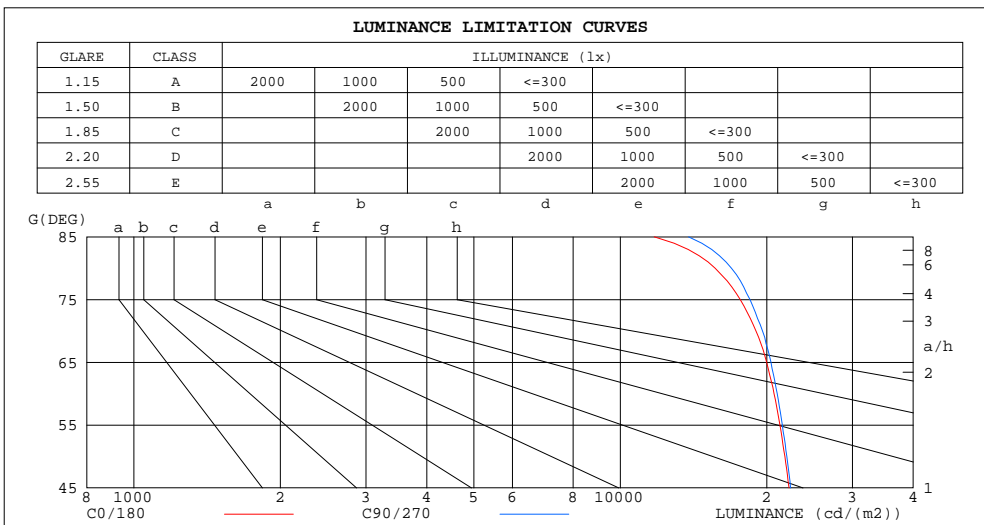
%lamp = 78.2%

C Range: 0 - 360DEG
 C Interval: 15.0DEG
 Test Speed: HIGH
 Temperature: 25.0DEG
 Operators: Alan Wang
 Test Date: 24 May 2023

γ Range: 0 - 180DEG
 γ Interval: 1.0DEG
 Test System: EVERFINE GO-R5000_V2 SYSTEM V2.00.416
 Humidity: 44.9%
 Test Distance: 2.500m [K=1.0391]
 Remarks:

LUMINANCE LIMITATION CURVES

Test:U:120.00V I:0.0908A P:10.630W PF:0.9757 Freq:60.00Hz Lamp Flux:777.24lx1 lm		
NAME:	TYPE:LED	WEIGHT:
SPEC.:ASD-MPR-5D10CC_4000K	DIM.:	SERIAL No.:
MFR.: ASD Lighting Corp	SUR.:	Shielding Angle:



LUMINANCE cd/(m2)		
G(DEG)	C0/180	C90/270
85	11743	13812
80	15664	16925
75	17635	18477
70	19007	19606
65	19984	20406
60	20693	21009
55	21289	21536
50	21786	21986
45	22224	22377

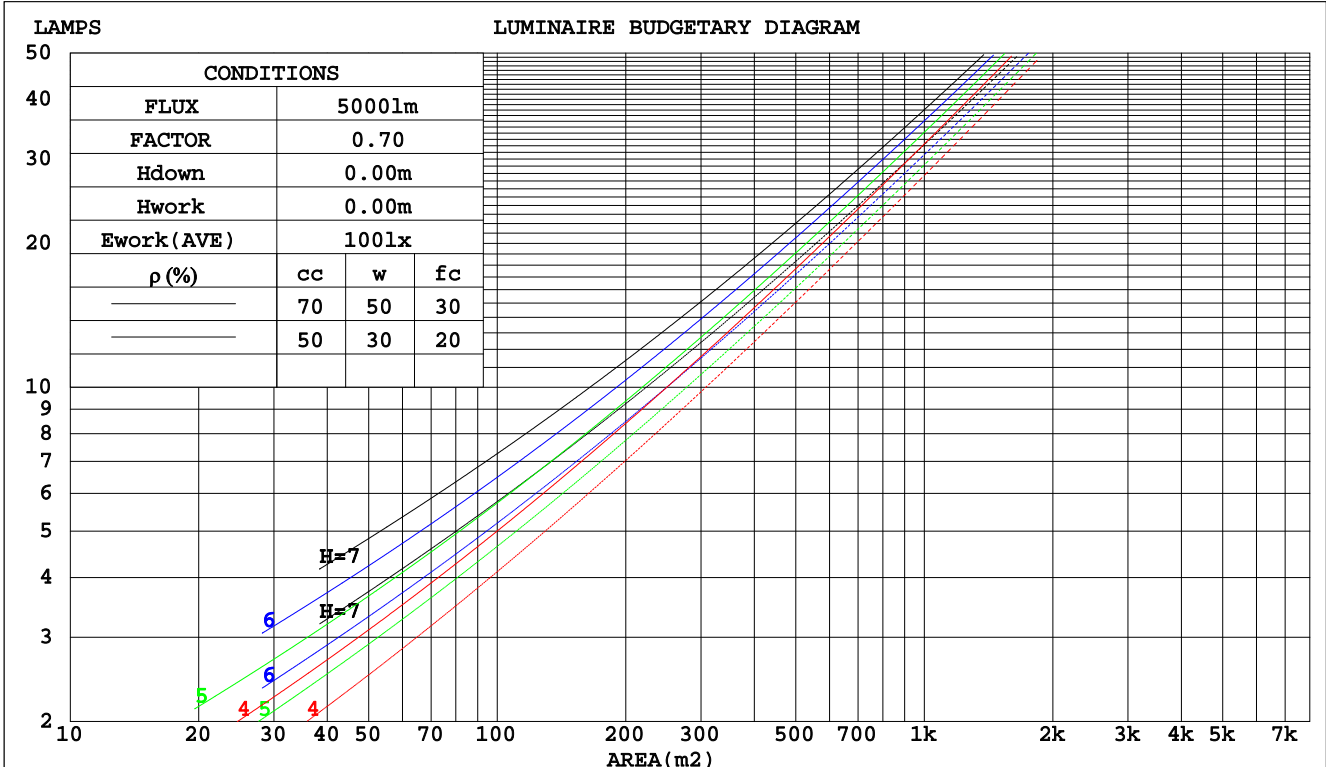
C Range: 0 - 360DEG
 C Interval: 15.0DEG
 Test Speed: HIGH
 Temperature: 25.0DEG
 Operators: Alan Wang
 Test Date: 24 May 2023

γ Range: 0 - 180DEG
 γ Interval: 1.0DEG
 Test System: EVERFINE GO-R5000_V2 SYSTEM V2.00.416
 Humidity: 44.9%
 Test Distance: 2.500m [K=1.0391]
 Remarks:

CU AND LUMINAIRE BUDGETARY ESTIMATE DIAGRAM

Test:U:120.00V I:0.0908A P:10.630W PF:0.9757 Freq:60.00Hz Lamp Flux:777.24lx1 lm		
NAME:	TYPE:LED	WEIGHT:
SPEC.:ASD-MPR-5D10CC_4000K	DIM.:	SERIAL No.:
MFR.: ASD Lighting Corp	SUR.:	Shielding Angle:

pcc	80%			70%			50%			30%			10%			0
	50%	30%	10%	50%	30%	10%	50%	30%	10%	50%	30%	10%	50%	30%	10%	0
pw																0
pfc	20%			20%			20%			20%			20%			0
RCR	RCR:Room Cavity Ratio						Coefficients of Utilization(CU)									
0.0	1.19	1.19	1.19	1.16	1.16	1.16	1.11	1.11	1.11	1.06	1.06	1.06	1.02	1.02	1.02	.00
1.0	1.04	.99	.95	1.01	.97	.94	.97	.94	.91	.93	.91	.88	.90	.87	.85	.83
2.0	.90	.83	.78	.88	.82	.77	.85	.79	.75	.81	.77	.73	.78	.75	.71	.69
3.0	.79	.71	.64	.78	.70	.64	.75	.68	.63	.72	.66	.61	.69	.64	.60	.58
4.0	.70	.61	.54	.69	.60	.54	.66	.59	.53	.64	.58	.53	.62	.56	.52	.50
5.0	.63	.54	.47	.61	.53	.47	.59	.52	.46	.57	.51	.45	.55	.50	.45	.43
6.0	.56	.47	.41	.55	.47	.41	.54	.46	.40	.52	.45	.40	.50	.44	.40	.37
7.0	.51	.42	.36	.50	.42	.36	.49	.41	.36	.47	.40	.35	.46	.40	.35	.33
8.0	.47	.38	.32	.46	.38	.32	.45	.37	.32	.43	.37	.32	.42	.36	.31	.29
9.0	.43	.34	.29	.42	.34	.29	.41	.34	.29	.40	.33	.28	.39	.33	.28	.26
10.0	.39	.31	.26	.39	.31	.26	.38	.31	.26	.37	.30	.26	.36	.30	.26	.24



C Range: 0 - 360DEG
 C Interval: 15.0DEG
 Test Speed: HIGH
 Temperature: 25.0DEG
 Operators: Alan Wang
 Test Date: 24 May 2023

γ Range: 0 - 180DEG
 γ Interval: 1.0DEG
 Test System: EVERFINE GO-R5000_V2 SYSTEM V2.00.416
 Humidity: 44.9%
 Test Distance: 2.500m [K=1.0391]
 Remarks:

WEC AND CCEC

Test:U:120.00V I:0.0908A P:10.630W PF:0.9757 Freq:60.00Hz Lamp Flux:777.24lx1 lm		
NAME:	TYPE:LED	WEIGHT:
SPEC.:ASD-MPR-5D10CC_4000K	DIM.:	SERIAL No.:
MFR.: ASD Lighting Corp	SUR.:	Shielding Angle:

ρcc	80%			70%			50%			30%			10%			0
ρw	50%	30%	10%	50%	30%	10%	50%	30%	10%	50%	30%	10%	50%	30%	10%	0
ρfc	20%			20%			20%			20%			20%			0
RCR	RCR:Room Cavity Ratio						Wall Exitance Coefficients(WEC)									
0.0																
1.0	.312	.178	.056	.305	.174	.055	.292	.167	.053	.279	.161	.052	.268	.155	.050	
2.0	.293	.161	.049	.287	.158	.049	.275	.153	.048	.264	.148	.046	.254	.144	.045	
3.0	.271	.144	.043	.266	.142	.043	.255	.138	.042	.246	.135	.041	.237	.131	.041	
4.0	.250	.130	.038	.245	.128	.038	.236	.125	.037	.227	.122	.037	.219	.119	.036	
5.0	.231	.118	.034	.227	.116	.034	.218	.114	.033	.211	.111	.033	.204	.109	.033	
6.0	.214	.107	.031	.210	.106	.031	.203	.104	.030	.196	.102	.030	.190	.100	.030	
7.0	.199	.098	.028	.196	.097	.028	.189	.096	.028	.183	.094	.027	.177	.092	.027	
8.0	.186	.091	.026	.183	.090	.025	.177	.088	.025	.172	.087	.025	.166	.085	.025	
9.0	.174	.084	.024	.171	.084	.023	.166	.082	.023	.161	.081	.023	.157	.080	.023	
10.0	.164	.079	.022	.161	.078	.022	.157	.077	.022	.152	.076	.021	.148	.074	.021	

ρcc	80%			70%			50%			30%			10%			0
ρw	50%	30%	10%	50%	30%	10%	50%	30%	10%	50%	30%	10%	50%	30%	10%	0
ρfc	20%			20%			20%			20%			20%			0
RCR	RCR:Room Cavity Ratio						Ceiling Cavity Exitance Coefficients(CCEC)									
0.0	.191	.191	.191	.163	.163	.163	.112	.112	.112	.064	.064	.064	.020	.020	.020	
1.0	.181	.157	.135	.155	.135	.116	.106	.093	.080	.061	.054	.047	.020	.017	.015	
2.0	.173	.133	.099	.148	.114	.085	.102	.079	.059	.059	.046	.035	.019	.015	.011	
3.0	.165	.115	.075	.142	.099	.065	.097	.069	.046	.056	.040	.027	.018	.013	.009	
4.0	.158	.102	.059	.135	.088	.051	.093	.061	.036	.054	.036	.021	.017	.012	.007	
5.0	.150	.091	.048	.129	.079	.042	.089	.055	.029	.052	.032	.017	.017	.011	.006	
6.0	.143	.083	.040	.123	.072	.035	.085	.050	.025	.049	.030	.015	.016	.010	.005	
7.0	.136	.076	.034	.117	.066	.030	.081	.046	.021	.047	.027	.012	.015	.009	.004	
8.0	.130	.070	.029	.112	.061	.026	.077	.043	.018	.045	.025	.011	.015	.008	.004	
9.0	.124	.065	.026	.107	.057	.023	.074	.040	.016	.043	.024	.010	.014	.008	.003	
10.0	.118	.061	.023	.102	.053	.020	.071	.037	.014	.041	.022	.009	.013	.007	.003	

C Range: 0 - 360DEG
 C Interval: 15.0DEG
 Test Speed: HIGH
 Temperature: 25.0DEG
 Operators: Alan Wang
 Test Date: 24 May 2023

γ Range: 0 - 180DEG
 γ Interval: 1.0DEG
 Test System: EVERFINE GO-R5000_V2 SYSTEM V2.00.416
 Humidity: 44.9%
 Test Distance: 2.500m [K=1.0391]
 Remarks:

UGR(Unified Glare Rating) Table

Test:U:120.00V I:0.0908A P:10.630W PF:0.9757 Freq:60.00Hz Lamp Flux:777.24lx1 lm										
NAME:					TYPE:LED			WEIGHT:		
SPEC.:ASD-MPR-5D10CC_4000K					DIM.:			SERIAL No.:		
MFR.: ASD Lighting Corp					SUR.:			Shielding Angle:		
ceiling/cavity	0.7	0.7	0.5	0.5	0.3	0.7	0.7	0.5	0.5	0.3
walls	0.5	0.3	0.5	0.3	0.3	0.5	0.3	0.5	0.3	0.3
working plane	0.2	0.2	0.2	0.2	0.2	0.2	0.2	0.2	0.2	0.2
Room dimensions	Viewed crosswise					Viewed endwise				
x = 2H y = 2H	23.4	25.0	23.7	25.2	25.4	23.5	25.0	23.8	25.2	25.4
3H	25.0	26.4	25.3	26.6	26.9	25.1	26.5	25.4	26.7	27.0
4H	25.6	26.9	25.9	27.2	27.5	25.7	27.1	26.0	27.3	27.6
6H	26.0	27.3	26.4	27.6	27.9	26.2	27.5	26.5	27.7	28.0
8H	26.2	27.4	26.5	27.7	28.0	26.3	27.6	26.7	27.9	28.2
12H	26.2	27.4	26.6	27.7	28.0	26.4	27.6	26.8	27.9	28.2
4H 2H	24.1	25.4	24.4	25.7	25.9	24.1	25.5	24.4	25.7	26.0
3H	25.8	27.0	26.2	27.3	27.6	25.9	27.1	26.2	27.4	27.7
4H	26.5	27.6	26.9	27.9	28.3	26.7	27.7	27.0	28.1	28.4
6H	27.1	28.1	27.5	28.4	28.8	27.3	28.2	27.7	28.6	28.9
8H	27.3	28.2	27.7	28.5	28.9	27.5	28.4	27.9	28.7	29.1
12H	27.4	28.2	27.8	28.6	29.0	27.6	28.4	28.0	28.8	29.2
8H 4H	26.8	27.7	27.2	28.1	28.5	26.9	27.8	27.3	28.2	28.6
6H	27.5	28.3	28.0	28.7	29.1	27.7	28.4	28.1	28.8	29.3
8H	27.8	28.5	28.3	28.9	29.3	28.0	28.6	28.4	29.1	29.5
12H	28.0	28.5	28.4	29.0	29.5	28.2	28.7	28.7	29.2	29.7
12H 4H	26.8	27.7	27.3	28.1	28.5	26.9	27.8	27.4	28.1	28.6
6H	27.6	28.3	28.1	28.7	29.1	27.7	28.4	28.2	28.8	29.3
8H	27.9	28.5	28.4	28.9	29.4	28.1	28.6	28.6	29.1	29.6
Variations with the observer position at spacings:										
S = 1.0H	+ 0.1 / - 0.2					+ 0.1 / - 0.2				
1.5H	+ 0.2 / - 0.3					+ 0.2 / - 0.3				
2.0H	+ 0.2 / - 0.3					+ 0.2 / - 0.3				

CIE Pub.117, 777.2 lm Total Lamp Luminous Flux Corrected (8log(F/F0) = -0.9)
 Area: 0.011304 m2

C Range: 0 - 360DEG
 C Interval: 15.0DEG
 Test Speed: HIGH
 Temperature: 25.0DEG
 Operators: Alan Wang
 Test Date: 24 May 2023

γ Range: 0 - 180DEG
 γ Interval: 1.0DEG
 Test System: EVERFINE GO-R5000_V2 SYSTEM V2.00.416
 Humidity: 44.9%
 Test Distance: 2.500m [K=1.0391]
 Remarks:

UTILIZATION FACTORS TABLE

Test:U:120.00V I:0.0908A P:10.630W PF:0.9757 Freq:60.00Hz Lamp Flux:777.24lx1 lm		
NAME:	TYPE:LED	WEIGHT:
SPEC.:ASD-MPR-5D10CC_4000K	DIM.:	SERIAL No.:
MFR.: ASD Lighting Corp	SUR.:	Shielding Angle:

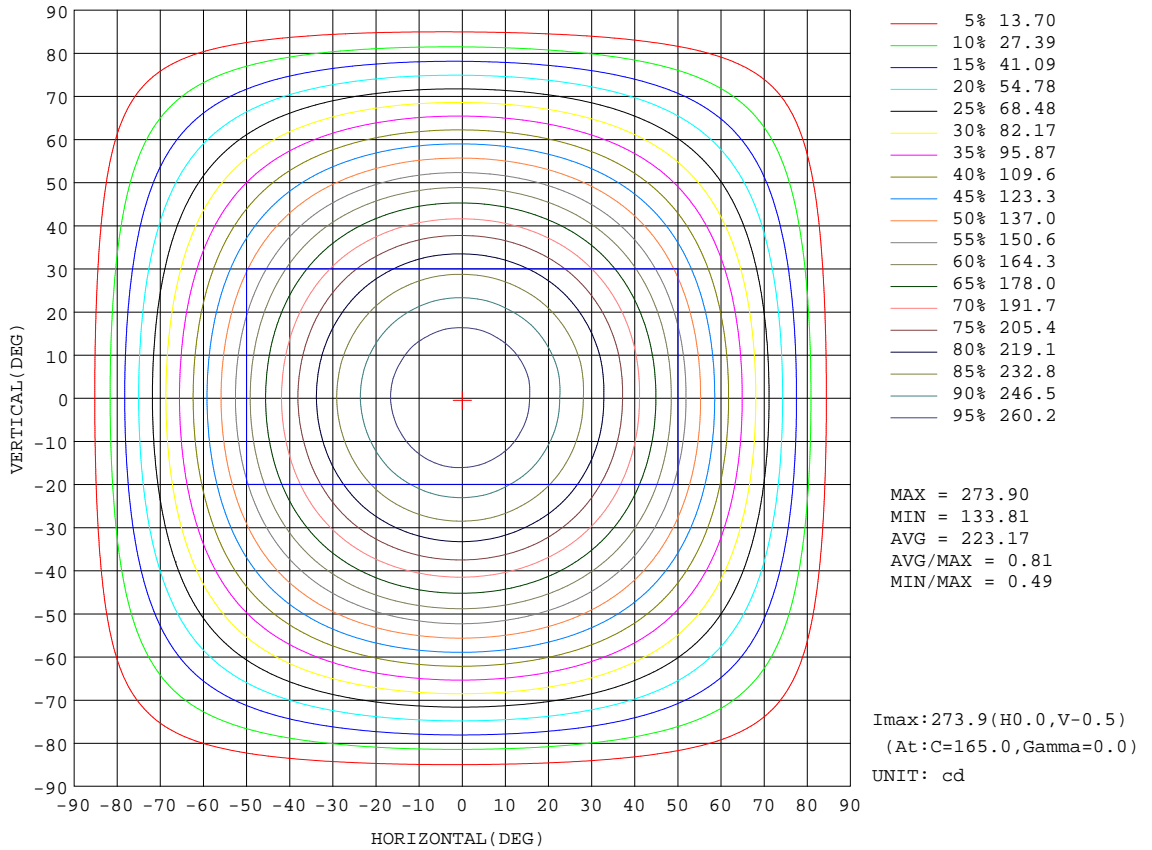
REFLECTANCE										
Ceiling	0.8	0.8	0.8	0.7	0.7	0.7	0.5	0.5	0.5	0
Walls	0.7	0.5	0.3	0.7	0.5	0.3	0.7	0.5	0.3	0
Working plane	0.2	0.2	0.2	0.2	0.2	0.2	0.2	0.2	0.2	0
ROOM INDEX	UTILIZATION FACTORS(PERCENT) $k(RI) \times RCR = 5$									
k = 0.60	57	46	39	57	46	39	56	45	39	32
0.80	67	56	48	66	55	48	65	55	48	41
1.00	76	65	57	75	64	57	72	65	56	49
1.25	83	72	65	81	72	65	79	70	64	57
1.50	88	78	71	86	77	70	83	75	69	62
2.00	95	86	80	93	85	79	89	83	77	69
2.50	99	91	85	97	89	84	93	87	82	74
3.00	102	95	90	100	94	89	96	91	86	78
4.00	106	100	96	104	99	94	99	95	92	83
5.00	109	104	100	106	102	98	102	98	95	86
ROOM INDEX	UF(total)									Direct
According to DIN EN 13032-2 2004			Suspended				SHRNOM = 1.25			

C Range: 0 - 360DEG
 C Interval: 15.0DEG
 Test Speed: HIGH
 Temperature: 25.0DEG
 Operators: Alan Wang
 Test Date: 24 May 2023

γ Range: 0 - 180DEG
 γ Interval: 1.0DEG
 Test System: EVERFINE GO-R5000_V2 SYSTEM V2.00.416
 Humidity: 44.9%
 Test Distance: 2.500m [K=1.0391]
 Remarks:

ISOCANDELA DIAGRAM

Test:U:120.00V I:0.0908A P:10.630W PF:0.9757 Freq:60.00Hz Lamp Flux:777.24lx1 lm		
NAME:	TYPE:LED	WEIGHT:
SPEC.:ASD-MPR-5D10CC_4000K	DIM.:	SERIAL No.:
MFR.: ASD Lighting Corp	SUR.:	Shielding Angle:

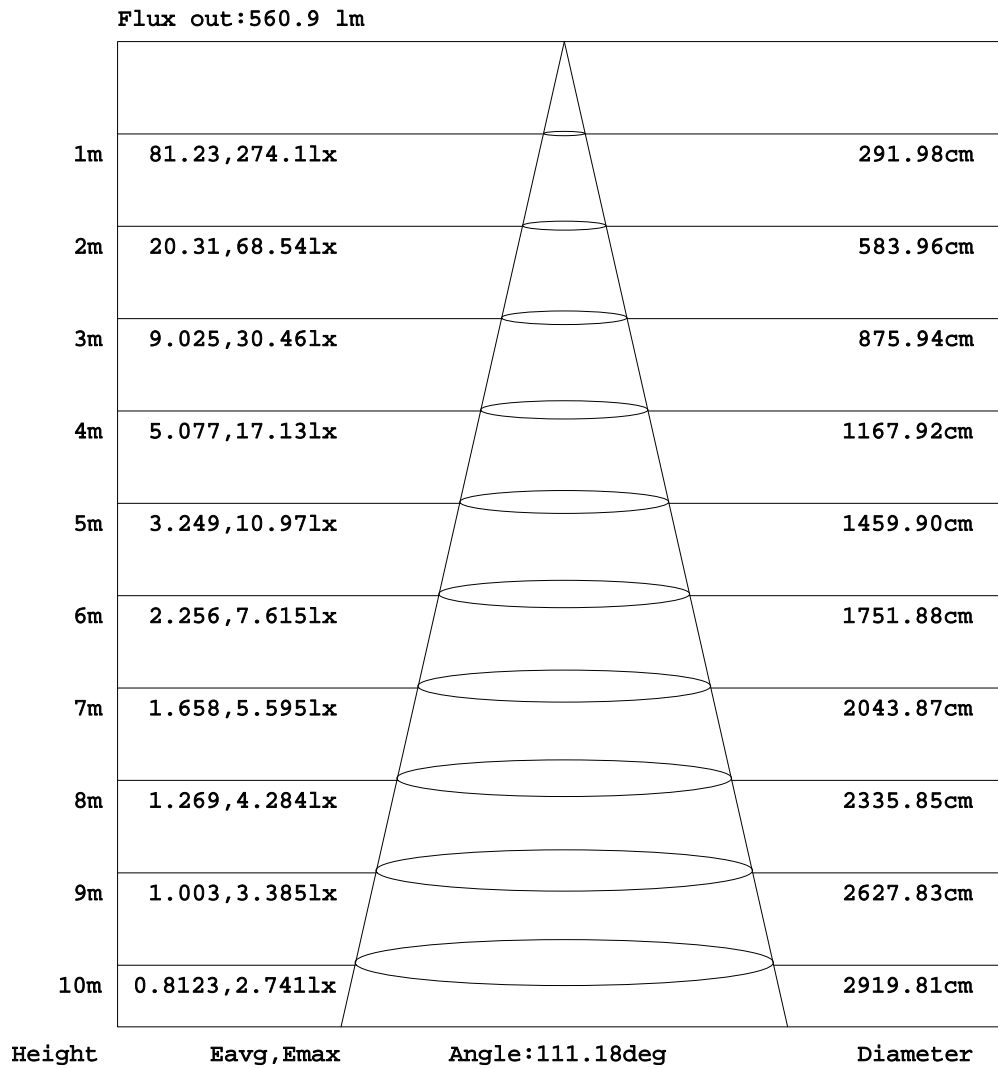


C Range: 0 - 360DEG
 C Interval: 15.0DEG
 Test Speed: HIGH
 Temperature: 25.0DEG
 Operators: Alan Wang
 Test Date: 24 May 2023

γ Range: 0 - 180DEG
 γ Interval: 1.0DEG
 Test System: EVERFINE GO-R5000_V2 SYSTEM V2.00.416
 Humidity: 44.9%
 Test Distance: 2.500m [K=1.0391]
 Remarks:

AAI Figure

Test:U:120.00V I:0.0908A P:10.630W PF:0.9757 Freq:60.00Hz Lamp Flux:777.24lx1 lm		
NAME:	TYPE:LED	WEIGHT:
SPEC.:ASD-MPR-5D10CC_4000K	DIM.:	SERIAL No.:
MFR.: ASD Lighting Corp	SUR.:	Shielding Angle:



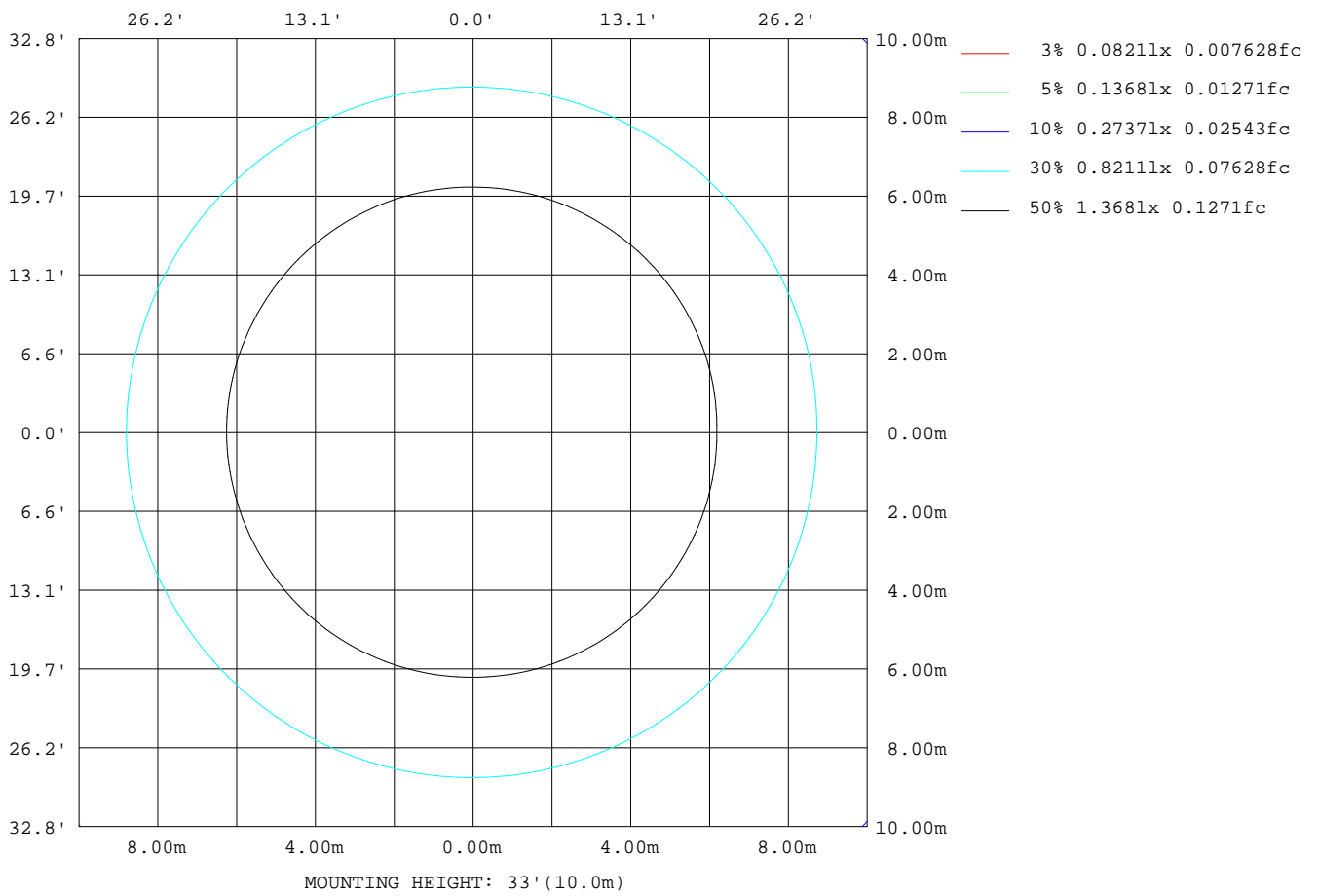
Note:The Curves indicate the illuminated area and the average illumination when the luminaire is at different distance.

C Range: 0 - 360DEG
 C Interval: 15.0DEG
 Test Speed: HIGH
 Temperature: 25.0DEG
 Operators:Alan Wang
 Test Date:24 May 2023

γ Range: 0 - 180DEG
 γ Interval: 1.0DEG
 Test System:EVERFINE GO-R5000_V2 SYSTEM V2.00.416
 Humidity: 44.9%
 Test Distance:2.500m [K=1.0391]
 Remarks:

ISOLUX DIAGRAM

Test:U:120.00V I:0.0908A P:10.630W PF:0.9757 Freq:60.00Hz Lamp Flux:777.24lx1 lm		
NAME:	TYPE:LED	WEIGHT:
SPEC.:ASD-MPR-5D10CC_4000K	DIM.:	SERIAL No.:
MFR.:ASD Lighting Corp	SUR.:	Shielding Angle:



C Range: 0 - 360DEG
 C Interval: 15.0DEG
 Test Speed: HIGH
 Temperature: 25.0DEG
 Operators: Alan Wang
 Test Date: 24 May 2023

γ Range: 0 - 180DEG
 γ Interval: 1.0DEG
 Test System: EVERFINE GO-R5000_V2 SYSTEM V2.00.416
 Humidity: 44.9%
 Test Distance: 2.500m [K=1.0391]
 Remarks:

LED Avg.L Report

Test:U:120.00V I:0.0908A P:10.630W PF:0.9757 Freq:60.00Hz Lamp Flux:777.241x1 lm		
NAME:	TYPE:LED	WEIGHT:
SPEC.:ASD-MPR-5D10CC_4000K	DIM.:	SERIAL No.:
MFR.:ASD Lighting Corp	SUR.:	Shielding Angle:

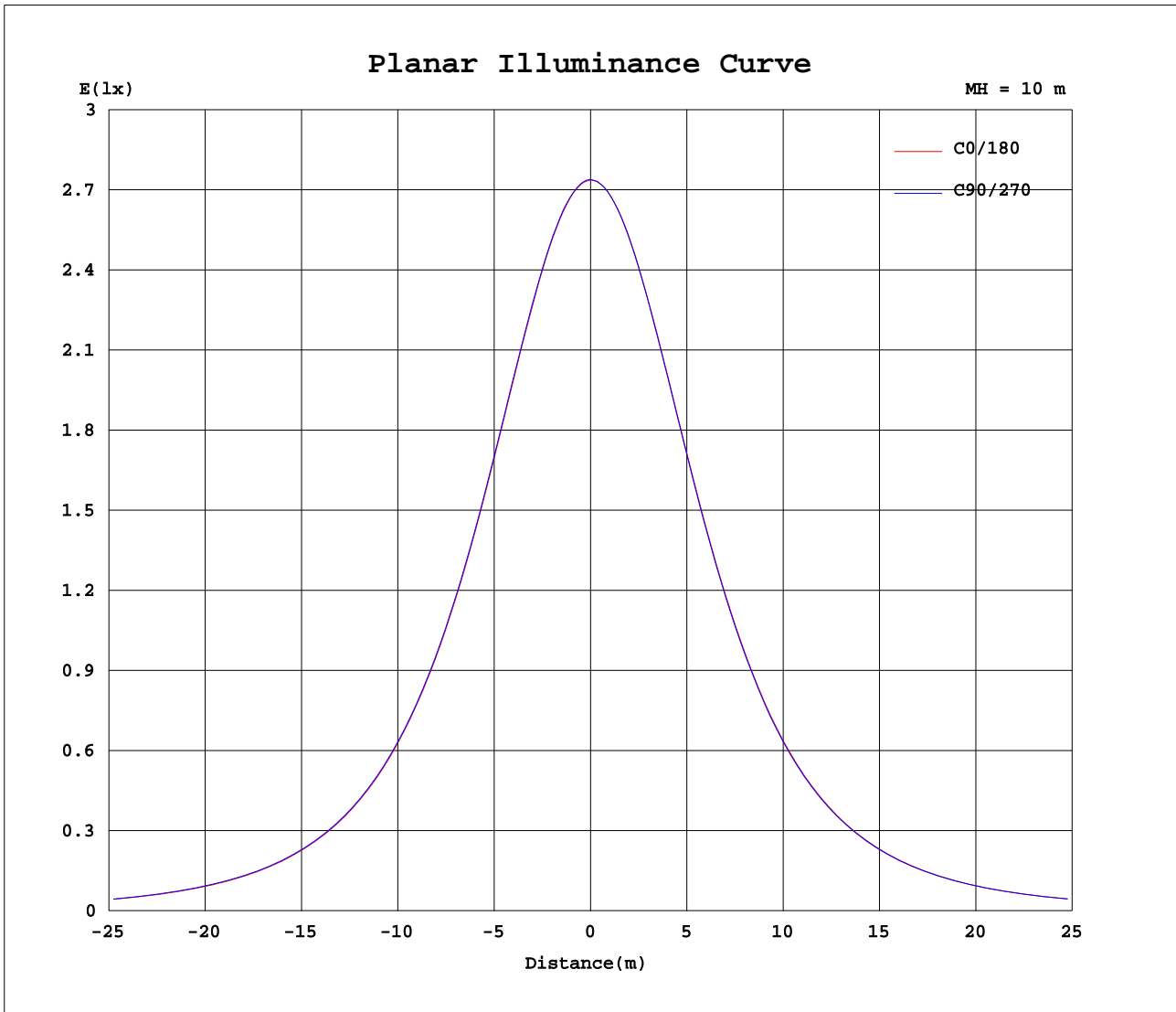
AvgL	cd/m2
L_0~180(65)av	20281
L_0~180(75)av	18202
L_0~180(85)av	13211
L_90~270(65)av	20425
L_90~270(75)av	18525
L_90~270(85)av	13739
L_45(65)av	20362
L_45(75)av	18384
L_45(85)av	13490

Standard: GB/T 29293-2012

C Range: 0 - 360DEG
C Interval: 15.0DEG
Test Speed: HIGH
Temperature: 25.0DEG
Operators: Alan Wang
Test Date: 24 May 2023

γ Range: 0 - 180DEG
 γ Interval: 1.0DEG
Test System: EVERFINE GO-R5000_V2 SYSTEM V2.00.416
Humidity: 44.9%
Test Distance: 2.500m [K=1.0391]
Remarks:

Planar Illuminance Curve



C Range: 0 - 360DEG
C Interval: 15.0DEG
Test Speed: HIGH
Temperature: 25.0DEG
Operators: Alan Wang
Test Date: 24 May 2023

γ Range: 0 - 180DEG
 γ Interval: 1.0DEG
Test System: EVERFINE GO-R5000_V2 SYSTEM V2.00.416
Humidity: 44.9%
Test Distance: 2.500m [K=1.0391]
Remarks:

LUMINOUS DISTRIBUTION INTENSITY DATA

Test:U:120.00V I:0.0908A P:10.630W PF:0.9757 Freq:60.00Hz Lamp Flux:777.24lx1 lm		
NAME:	TYPE:LED	WEIGHT:
SPEC.:ASD-MPR-5D10CC_4000K	DIM.:	SERIAL No.:
MFR.: ASD Lighting Corp	SUR.:	Shielding Angle:

Table--1

UNIT: cd

C(DEG) γ (DEG)	0	15	30	45	60	75	90	105	120	135	150	165	180	195	210	225	240	255	270
0	274	274	274	274	274	274	274	274	274	274	274	274	274	274	274	274	274	274	274
5	272	272	272	272	272	272	272	272	273	273	273	273	273	273	273	273	272	273	273
10	268	268	268	268	268	268	268	269	269	269	269	269	269	269	269	269	269	269	269
15	261	261	261	261	261	262	262	262	262	262	262	262	263	263	263	263	262	263	262
20	252	252	252	252	252	253	253	253	253	254	254	254	254	254	254	254	254	254	254
25	241	241	241	241	241	242	242	242	242	243	243	243	243	243	243	243	243	243	243
30	227	228	228	228	228	228	229	229	229	229	229	230	230	230	230	230	230	230	229
35	212	212	213	213	213	213	214	214	214	215	215	215	215	215	215	215	215	215	214
40	196	196	196	196	196	197	197	197	197	198	198	198	199	199	199	199	198	198	198
45	178	178	178	178	178	179	179	179	180	180	180	180	180	180	180	180	180	179	179
50	158	158	158	159	159	160	160	160	160	161	161	161	161	161	161	161	160	160	160
55	138	138	138	139	139	139	140	140	140	140	140	141	141	141	141	141	140	140	140
60	117	117	117	118	118	118	119	119	119	119	119	119	120	120	120	120	119	119	119
65	95.5	95.8	96.1	96.5	96.9	97.2	97.5	97.6	97.7	97.8	98.0	97.8	98.3	98.4	98.4	98.4	98.3	98.0	97.7
70	73.5	73.8	74.8	74.6	75.3	75.5	75.8	75.9	75.9	76.0	76.0	76.0	76.5	76.7	76.7	76.8	76.7	76.4	76.0
75	51.6	52.0	52.6	53.0	53.5	53.8	54.1	54.1	54.1	54.1	54.0	54.0	54.9	55.1	55.1	55.2	55.1	54.8	54.3
80	30.7	31.1	31.7	32.2	32.6	33.0	33.2	33.3	33.2	33.3	33.2	33.2	34.0	34.1	34.1	34.2	34.0	33.7	33.3
85	11.6	11.9	12.3	12.7	13.1	13.4	13.6	13.7	13.8	13.9	13.9	13.8	14.5	14.4	14.4	14.3	14.1	13.8	13.5
90	0.03	0.03	0.03	0.03	0.03	0.03	0.04	0.04	0.04	0.04	0.05	0.04	0.07	0.07	0.07	0.06	0.06	0.06	0.05
95	0.03	0.03	0.03	0.03	0.03	0.03	0.03	0.03	0.03	0.03	0.03	0.03	0.07	0.07	0.07	0.07	0.07	0.07	0.07
100	0.04	0.04	0.04	0.05	0.04	0.04	0.04	0.04	0.04	0.04	0.04	0.04	0.08	0.08	0.08	0.08	0.08	0.08	0.08
105	0.06	0.06	0.06	0.06	0.06	0.06	0.06	0.06	0.06	0.05	0.05	0.05	0.10	0.10	0.10	0.10	0.10	0.10	0.10
110	0.07	0.07	0.07	0.07	0.07	0.07	0.07	0.07	0.07	0.07	0.07	0.07	0.10	0.10	0.11	0.11	0.11	0.11	0.11
115	0.09	0.09	0.09	0.09	0.09	0.09	0.09	0.09	0.09	0.08	0.08	0.08	0.11	0.11	0.11	0.11	0.11	0.11	0.11
120	0.10	0.11	0.10	0.11	0.11	0.11	0.10	0.10	0.11	0.10	0.10	0.10	0.11	0.11	0.11	0.11	0.12	0.11	0.11
125	0.12	0.12	0.12	0.13	0.13	0.13	0.12	0.13	0.12	0.12	0.12	0.12	0.12	0.12	0.12	0.12	0.12	0.12	0.12
130	0.14	0.14	0.14	0.14	0.14	0.14	0.14	0.14	0.14	0.14	0.14	0.14	0.14	0.14	0.14	0.14	0.14	0.14	0.14
135	0.15	0.15	0.15	0.16	0.16	0.16	0.16	0.15	0.15	0.15	0.15	0.15	0.16	0.16	0.16	0.16	0.16	0.16	0.16
140	0.16	0.16	0.16	0.17	0.17	0.17	0.16	0.16	0.16	0.16	0.16	0.16	0.18	0.18	0.18	0.18	0.18	0.18	0.18
145	0.16	0.16	0.16	0.17	0.17	0.17	0.17	0.17	0.17	0.17	0.16	0.16	0.20	0.20	0.20	0.20	0.20	0.20	0.20
150	0.17	0.17	0.17	0.17	0.18	0.17	0.17	0.17	0.17	0.17	0.17	0.17	0.22	0.22	0.22	0.22	0.22	0.22	0.22
155	0.19	0.19	0.18	0.19	0.19	0.19	0.19	0.19	0.19	0.19	0.19	0.18	0.23	0.23	0.23	0.23	0.23	0.23	0.23
160	0.20	0.20	0.19	0.20	0.20	0.20	0.20	0.20	0.20	0.20	0.20	0.20	0.25	0.25	0.25	0.24	0.24	0.24	0.24
165	0.20	0.20	0.21	0.21	0.21	0.21	0.21	0.21	0.21	0.21	0.21	0.20	0.25	0.25	0.25	0.25	0.25	0.25	0.25
170	0.22	0.21	0.22	0.22	0.22	0.22	0.22	0.22	0.22	0.22	0.21	0.21	0.25	0.25	0.25	0.25	0.24	0.24	0.24
175	0.23	0.23	0.23	0.23	0.23	0.24	0.24	0.24	0.24	0.23	0.23	0.23	0.24	0.25	0.25	0.25	0.24	0.24	0.24
180	0.23	0.23	0.23	0.23	0.23	0.23	0.23	0.23	0.23	0.23	0.23	0.23	0.23	0.23	0.23	0.23	0.23	0.23	0.23

C Range: 0 - 360DEG
 C Interval: 15.0DEG
 Test Speed: HIGH
 Temperature: 25.0DEG
 Operators: Alan Wang
 Test Date: 24 May 2023

γ Range: 0 - 180DEG
 γ Interval: 1.0DEG
 Test System: EVERFINE GO-R5000_V2 SYSTEM V2.00.416
 Humidity: 44.9%
 Test Distance: 2.500m [K=1.0391]
 Remarks:

LUMINOUS DISTRIBUTION INTENSITY DATA

Test:U:120.00V I:0.0908A P:10.630W PF:0.9757 Freq:60.00Hz Lamp Flux:777.24lx1 lm		
NAME:	TYPE:LED	WEIGHT:
SPEC.:ASD-MPR-5D10CC_4000K	DIM.:	SERIAL No.:
MFR.: ASD Lighting Corp	SUR.:	Shielding Angle:

Table--2

UNIT: cd

C(DEG) γ (DEG)	285	300	315	330	345														
0	274	274	274	274	274														
5	273	272	273	272	273														
10	268	268	269	268	268														
15	262	262	262	262	262														
20	253	253	253	253	253														
25	242	242	242	242	242														
30	229	229	229	229	229														
35	214	214	214	214	214														
40	198	197	197	197	197														
45	179	178	179	178	178														
50	160	159	159	159	159														
55	139	139	139	139	139														
60	118	118	118	118	118														
65	97.3	96.8	96.5	96.2	96.1														
70	75.5	75.0	74.6	74.3	74.2														
75	53.9	53.3	52.9	52.5	52.4														
80	32.9	32.3	31.8	31.5	31.4														
85	13.1	12.7	12.3	12.1	12.1														
90	0.05	0.05	0.05	0.05	0.05														
95	0.07	0.07	0.07	0.07	0.07														
100	0.09	0.09	0.09	0.09	0.09														
105	0.10	0.10	0.10	0.10	0.10														
110	0.11	0.11	0.11	0.11	0.11														
115	0.11	0.11	0.11	0.11	0.11														
120	0.11	0.12	0.12	0.12	0.12														
125	0.12	0.13	0.13	0.13	0.13														
130	0.14	0.14	0.14	0.14	0.14														
135	0.16	0.16	0.16	0.16	0.16														
140	0.18	0.18	0.18	0.18	0.18														
145	0.20	0.20	0.20	0.20	0.20														
150	0.22	0.22	0.22	0.22	0.22														
155	0.23	0.23	0.23	0.23	0.23														
160	0.24	0.24	0.25	0.25	0.25														
165	0.25	0.25	0.25	0.25	0.25														
170	0.24	0.24	0.24	0.25	0.24														
175	0.24	0.24	0.24	0.24	0.24														
180	0.23	0.23	0.23	0.23	0.23														

C Range: 0 - 360DEG
 C Interval: 15.0DEG
 Test Speed: HIGH
 Temperature: 25.0DEG
 Operators: Alan Wang
 Test Date: 24 May 2023

γ Range: 0 - 180DEG
 γ Interval: 1.0DEG
 Test System: EVERFINE GO-R5000_V2 SYSTEM V2.00.416
 Humidity: 44.9%
 Test Distance: 2.500m [K=1.0391]
 Remarks: