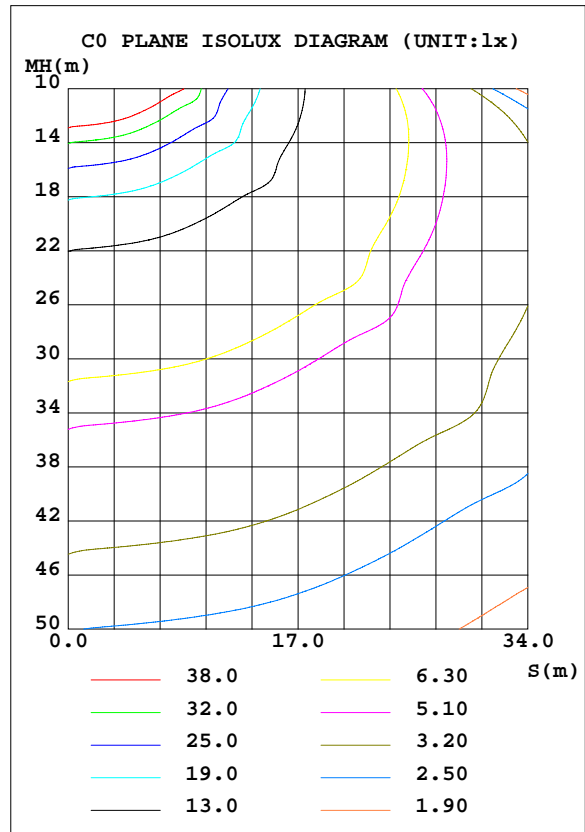
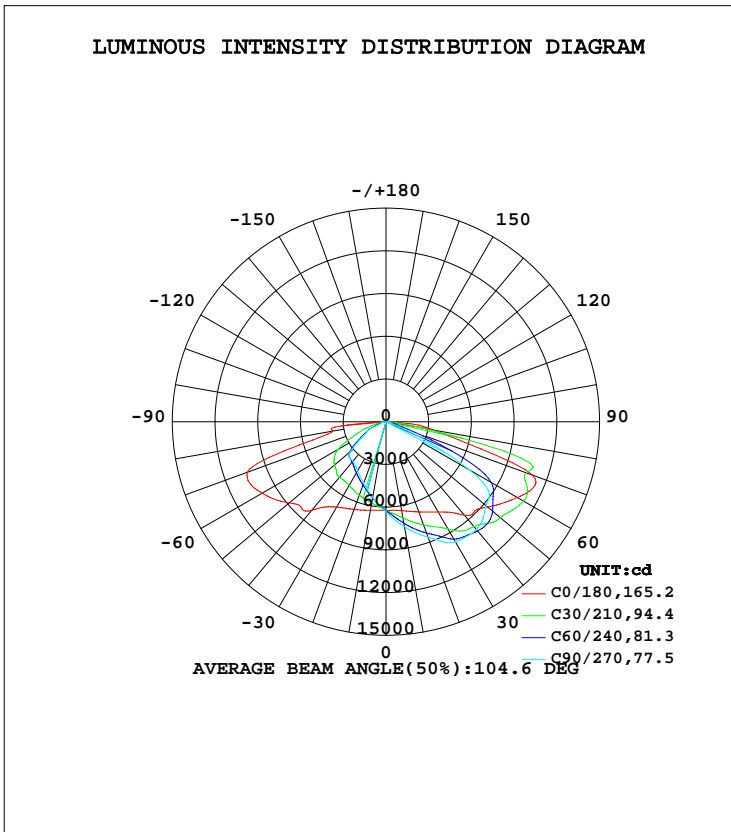


LUMINAIRE PHOTOMETRIC TEST REPORT

Test:U:277.00V I:0.8636A P:237.72W PF:0.9937 Freq:60.00Hz Lamp Flux:31680x lm		
NAME: ASD Lighting Corp	TYPE: LED	WEIGHT:
SPEC.: ASD-LSB2HV-240D50B-PRM	DIM.:	SERIAL No.:
MFR.: ASD Lighting Corp	SUR.:	Shielding Angle:

DATA OF LAMP		PHOTOMETRIC DATA Eff: 133.01 lm/W			
MODEL	ASD-LSB2HV-240D50B-PRM	I <sub>max</sub> (cd)	13184	S/MH(C0/180)	1.94
NOMINAL POWER(W)	240	LOR(%)	100.0	S/MH(C90/270)	0.94
RATED VOLTAGE(V)	277-480	TOTAL FLUX(lm)	31680	η UP, DN(C0-180)	0.1,66.3
NOMINAL FLUX(lm)	31680	CIE CLASS	DIRECT	η UP, DN(C180-360)	0.1,33.5
LAMPS INSIDE	1	η up(%)	0.2	CIBSE SHR NOM	1.75
TEST VOLTAGE(V)	277	η down(%)	99.8	CIBSE SHR MAX	1.75



C Range: 0 - 360DEG  
 C Interval: 15.0DEG  
 Test Speed: HIGH  
 Temperature: 25.1DEG  
 Operators: Alan Wang  
 Test Date: 18 July 2021

γ Range: 0 - 180DEG  
 γ Interval: 1.0DEG  
 Test System: EVERFINE GO-R5000\_V2 SYSTEM V2.00.442T2  
 Humidity: 52.2%  
 Test Distance: 2.500m [K=1.0469]  
 Remarks:

## ZONAL FLUX DIAGRAM

## ZONAL FLUX DIAGRAM:

$\gamma$	C0	C45	C90	C135	C180	C225	C270	C315	$\gamma$	$\Phi$ zone	$\Phi$ total	%lum,lamp
10	633.5	707.0	748.4	711.5	631.2	559.8	540.0	567.2	0- 10	602.9	602.9	1.91,1.91
20	674.2	805.6	861.7	798.3	655.5	503.5	459.9	515.4	10- 20	1838	2441	7.72,7.72
30	732.0	922.8	974.4	914.6	692.8	452.0	398.6	466.6	20- 30	3128	5569	17.6,17.6
40	857.4	992.1	987.2	983.1	811.7	413.3	362.1	431.9	30- 40	4460	10029	31.7,31.7
50	931.7	1033	918.3	1034	887.2	361.3	322.9	381.6	40- 50	5702	15730	49.7,49.7
60	1064	961.1	678.0	984.4	1004	233.8	164.7	266.6	50- 60	6390	22120	70,70
70	1094	594.7	78.34	548.0	1034	99.11	37.87	121.7	60- 70	5772	27892	88.2,88.2
80	335.8	68.43	23.85	69.03	381.4	27.72	20.94	30.48	70- 80	3083	30975	98,98
90	9.068	4.675	2.207	2.868	8.563	1.080	0.1064	1.890	80- 90	594.0	31569	99.8,99.8
100	0.4163	0.1255	0.0727	0.1908	0.8720	0.6081	0.3172	0.6750	90-100	16.11	31585	99.9,99.9
110	0.5072	0.1699	0.1183	0.2907	0.8631	0.7078	0.5070	0.7374	100-110	4.812	31590	99.9,99.9
120	0.6095	0.2291	0.1775	0.3559	0.8086	0.7836	0.6522	0.7718	110-120	5.098	31595	99.9,99.9
130	0.7216	0.3054	0.2669	0.4123	0.8685	0.9802	0.8836	0.9626	120-130	5.527	31601	99.9,99.9
140	0.6775	0.3977	0.3785	0.4941	0.8828	1.050	1.049	1.021	130-140	5.592	31606	100,100
150	0.6024	0.4840	0.5049	0.5508	0.8951	1.069	1.144	1.037	140-150	4.819	31611	100,100
160	0.6507	0.5990	0.6697	0.6678	0.9372	1.041	1.164	1.089	150-160	3.804	31615	100,100
170	0.7294	0.7359	0.8239	0.7896	0.9271	0.9448	1.017	1.030	160-170	2.456	31618	100,100
180	0.9212	0.9212	0.9212	0.9212	0.9103	0.9103	0.9103	0.9103	170-180	0.8459	31618	100,100
DEG	LUMINOUS INTENSITY: $\times 10\text{cd}$									UNIT:lm		

Conical surface Flux(90deg): 12754 lm

%lum = 40.3%

%lamp = 40.3%

Conical surface Flux(120deg): 22120 lm

%lum = 70.0%

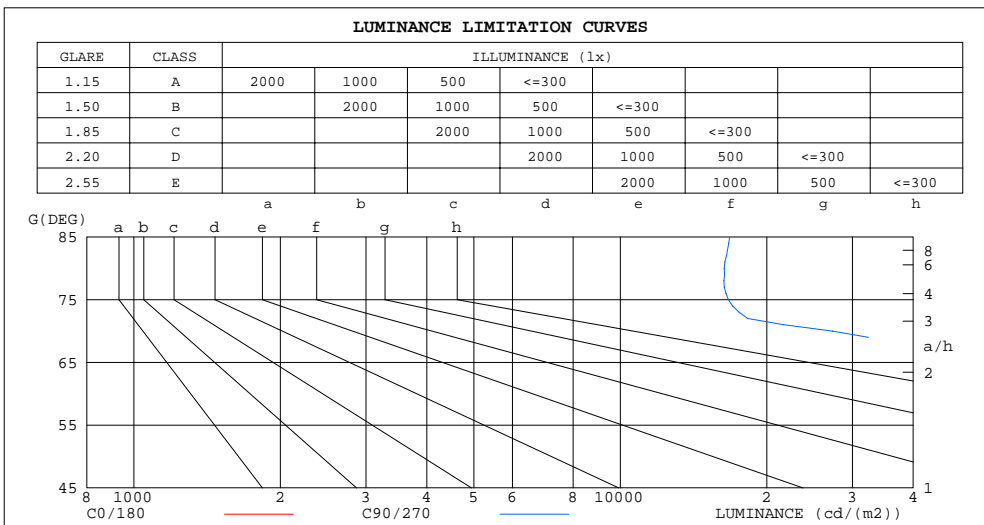
%lamp = 70.0%

C Range: 0 - 360DEG  
 C Interval: 15.0DEG  
 Test Speed: HIGH  
 Temperature: 25.1DEG  
 Operators: Alan Wang  
 Test Date: 18 July 2021

$\gamma$  Range: 0 - 180DEG  
 $\gamma$  Interval: 1.0DEG  
 Test System: EVERFINE GO-R5000\_V2 SYSTEM V2.00.442T2  
 Humidity: 52.2%  
 Test Distance: 2.500m [K=1.0469]  
 Remarks:

LUMINANCE LIMITATION CURVES

Test:U:277.00V I:0.8636A P:237.72W PF:0.9937 Freq:60.00Hz Lamp Flux:31680x lm		
NAME: ASD Lighting Corp	TYPE: LED	WEIGHT:
SPEC.: ASD-LSB2HV-240D50B-PRM	DIM.:	SERIAL No.:
MFR.: ASD Lighting Corp	SUR.:	Shielding Angle:



LUMINANCE cd/(m2)		
G (DEG)	C0/180	C90/270
85	243281	16783
80	230196	16350
75	274884	16683
70	380883	27269
65	317455	83915
60	253433	161426
55	207110	183663
50	172547	170068
45	148833	162188

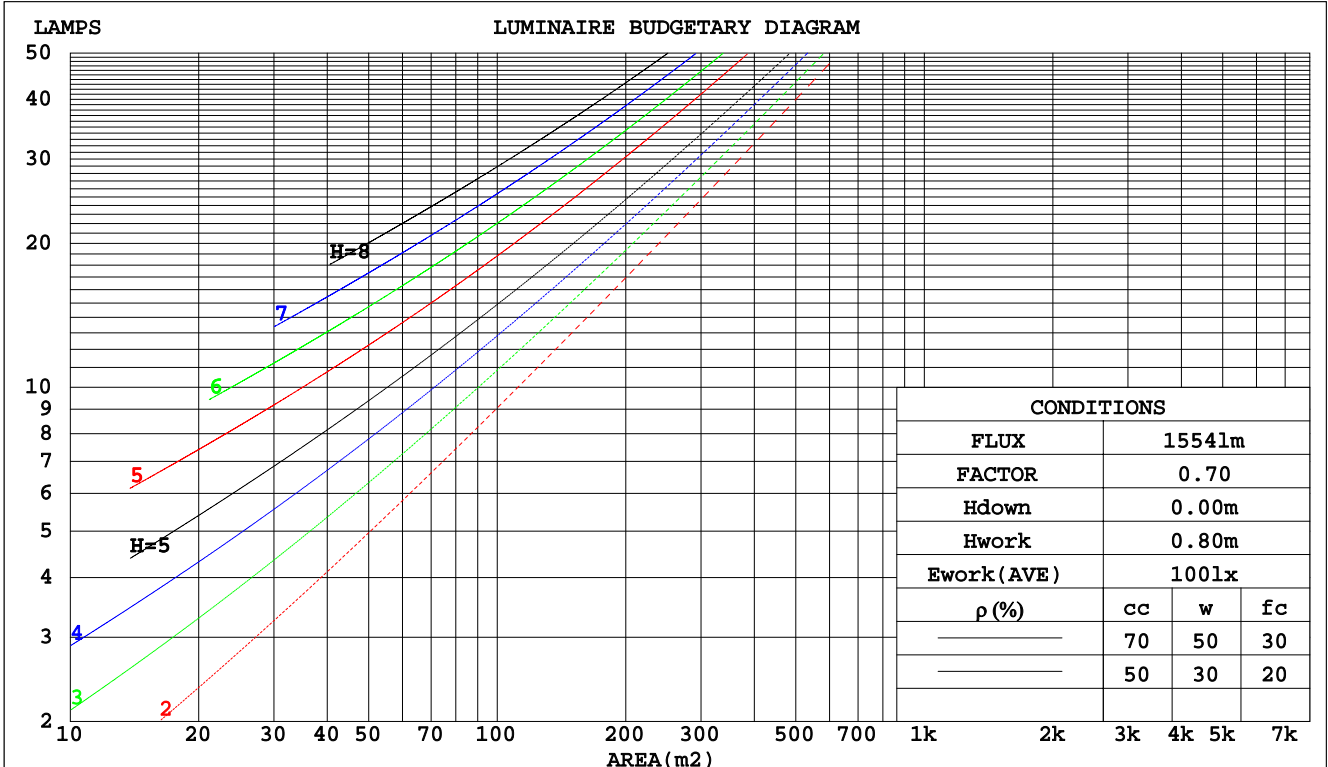
C Range: 0 - 360DEG  
 C Interval: 15.0DEG  
 Test Speed: HIGH  
 Temperature: 25.1DEG  
 Operators: Alan Wang  
 Test Date: 18 July 2021

$\gamma$  Range: 0 - 180DEG  
 $\gamma$  Interval: 1.0DEG  
 Test System: EVERFINE GO-R5000\_V2 SYSTEM V2.00.442T2  
 Humidity: 52.2%  
 Test Distance: 2.500m [K=1.0469]  
 Remarks:

CU AND LUMINAIRE BUDGETARY ESTIMATE DIAGRAM

Test:U:277.00V I:0.8636A P:237.72W PF:0.9937 Freq:60.00Hz Lamp Flux:31680x lm		
NAME: ASD Lighting Corp	TYPE: LED	WEIGHT:
SPEC.: ASD-LSB2HV-240D50B-PRM	DIM.:	SERIAL No.:
MFR.: ASD Lighting Corp	SUR.:	Shielding Angle:

pcc	80%			70%			50%			30%			10%			0
pw	50%	30%	10%	50%	30%	10%	50%	30%	10%	50%	30%	10%	50%	30%	10%	0
pfc	20%			20%			20%			20%			20%			0
RCR	RCR:Room Cavity Ratio      Coefficients of Utilization(CU)															
0.0	1.19	1.19	1.19	1.16	1.16	1.16	1.11	1.11	1.11	1.06	1.06	1.06	1.02	1.02	1.02	.00
1.0	1.02	.97	.93	.00	.95	.91	.95	.92	.88	.91	.88	.85	.87	.85	.83	.81
2.0	.87	.79	.72	.85	.78	.71	.81	.75	.70	.78	.73	.68	.74	.70	.66	.64
3.0	.74	.65	.58	.73	.64	.57	.70	.62	.56	.67	.60	.55	.64	.59	.54	.52
4.0	.65	.55	.47	.63	.54	.47	.60	.52	.46	.58	.51	.45	.56	.50	.45	.42
5.0	.57	.47	.39	.55	.46	.39	.53	.45	.39	.51	.44	.38	.49	.43	.38	.35
6.0	.50	.40	.33	.49	.40	.33	.47	.39	.33	.46	.38	.32	.44	.37	.32	.30
7.0	.45	.35	.29	.44	.35	.29	.43	.34	.28	.41	.34	.28	.40	.33	.28	.26
8.0	.41	.31	.25	.40	.31	.25	.38	.30	.25	.37	.30	.25	.36	.29	.24	.22
9.0	.37	.28	.22	.36	.28	.22	.35	.27	.22	.34	.27	.22	.33	.26	.22	.20
10.0	.34	.25	.20	.33	.25	.20	.32	.25	.20	.31	.24	.19	.30	.24	.19	.17



C Range: 0 - 360DEG  
 C Interval: 15.0DEG  
 Test Speed: HIGH  
 Temperature: 25.1DEG  
 Operators: Alan Wang  
 Test Date: 18 July 2021

γ Range: 0 - 180DEG  
 γ Interval: 1.0DEG  
 Test System: EVERFINE GO-R5000\_V2 SYSTEM V2.00.442T2  
 Humidity: 52.2%  
 Test Distance: 2.500m [K=1.0469]  
 Remarks:

WEC AND CCEC

Test:U:277.00V I:0.8636A P:237.72W PF:0.9937 Freq:60.00Hz Lamp Flux:31680x lm		
NAME: ASD Lighting Corp	TYPE: LED	WEIGHT:
SPEC.: ASD-LSB2HV-240D50B-PRM	DIM.:	SERIAL No.:
MFR.: ASD Lighting Corp	SUR.:	Shielding Angle:

ρcc	80%			70%			50%			30%			10%			0
ρw	50%	30%	10%	50%	30%	10%	50%	30%	10%	50%	30%	10%	50%	30%	10%	0
ρfc	20%			20%			20%			20%			20%			0
RCR	RCR:Room Cavity Ratio						Wall Exitance Coefficients(WEC)									
0.0																
1.0	.348	.198	.063	.341	.194	.062	.327	.188	.060	.315	.181	.058	.303	.176	.057	
2.0	.328	.180	.055	.322	.177	.055	.309	.172	.053	.298	.167	.052	.288	.163	.051	
3.0	.302	.161	.048	.296	.159	.048	.285	.155	.047	.275	.151	.046	.266	.147	.046	
4.0	.276	.144	.042	.271	.142	.042	.262	.139	.041	.253	.136	.041	.244	.133	.040	
5.0	.254	.129	.037	.249	.128	.037	.240	.125	.037	.232	.123	.036	.225	.120	.036	
6.0	.233	.117	.033	.229	.116	.033	.222	.114	.033	.215	.112	.033	.208	.109	.033	
7.0	.216	.107	.030	.212	.106	.030	.205	.104	.030	.199	.102	.030	.193	.100	.029	
8.0	.200	.098	.028	.197	.097	.027	.191	.095	.027	.185	.094	.027	.180	.092	.027	
9.0	.187	.090	.025	.184	.090	.025	.178	.088	.025	.173	.087	.025	.168	.085	.025	
10.0	.175	.084	.023	.172	.083	.023	.167	.082	.023	.162	.081	.023	.158	.079	.023	

ρcc	80%			70%			50%			30%			10%			0
ρw	50%	30%	10%	50%	30%	10%	50%	30%	10%	50%	30%	10%	50%	30%	10%	0
ρfc	20%			20%			20%			20%			20%			0
RCR	RCR:Room Cavity Ratio						Ceiling Cavity Exitance Coefficients(CCEC)									
0.0	.192	.192	.192	.164	.164	.164	.112	.112	.112	.064	.064	.064	.021	.021	.021	
1.0	.184	.157	.133	.158	.135	.114	.108	.093	.079	.062	.054	.046	.020	.017	.015	
2.0	.178	.133	.095	.153	.114	.082	.105	.079	.057	.060	.046	.034	.019	.015	.011	
3.0	.172	.116	.071	.147	.100	.062	.101	.069	.043	.058	.041	.025	.019	.013	.008	
4.0	.165	.103	.055	.141	.089	.048	.097	.062	.034	.056	.036	.020	.018	.012	.007	
5.0	.157	.093	.045	.135	.080	.039	.093	.056	.028	.054	.033	.016	.017	.011	.005	
6.0	.150	.085	.038	.129	.073	.033	.089	.051	.023	.052	.030	.014	.017	.010	.005	
7.0	.143	.078	.032	.123	.067	.028	.085	.047	.020	.049	.028	.012	.016	.009	.004	
8.0	.136	.072	.028	.117	.063	.024	.081	.044	.017	.047	.026	.010	.015	.008	.003	
9.0	.130	.067	.025	.112	.058	.022	.077	.041	.015	.045	.024	.009	.015	.008	.003	
10.0	.124	.063	.022	.107	.055	.020	.074	.038	.014	.043	.023	.008	.014	.007	.003	

C Range: 0 - 360DEG  
 C Interval: 15.0DEG  
 Test Speed: HIGH  
 Temperature: 25.1DEG  
 Operators: Alan Wang  
 Test Date: 18 July 2021

γ Range: 0 - 180DEG  
 γ Interval: 1.0DEG  
 Test System: EVERFINE GO-R5000\_V2 SYSTEM V2.00.442T2  
 Humidity: 52.2%  
 Test Distance: 2.500m [K=1.0469]  
 Remarks:

UGR(Unified Glare Rating) Table

Test:U:277.00V I:0.8636A P:237.72W PF:0.9937 Freq:60.00Hz Lamp Flux:31680x lm										
NAME: ASD Lighting Corp					TYPE: LED			WEIGHT:		
SPEC.: ASD-LSB2HV-240D50B-PRM					DIM.:			SERIAL No.:		
MFR.: ASD Lighting Corp					SUR.:			Shielding Angle:		
ceiling/cavity	0.7	0.7	0.5	0.5	0.3	0.7	0.7	0.5	0.5	0.3
walls	0.5	0.3	0.5	0.3	0.3	0.5	0.3	0.5	0.3	0.3
working plane	0.2	0.2	0.2	0.2	0.2	0.2	0.2	0.2	0.2	0.2
Room dimensions	Viewed crosswise					Viewed endwise				
x = 2H y = 2H	34.0	35.8	34.3	36.1	36.4	31.9	33.7	32.2	34.0	34.3
3H	38.2	39.8	38.5	40.1	40.5	31.9	33.5	32.3	33.9	34.2
4H	39.2	40.8	39.6	41.1	41.5	31.9	33.4	32.3	33.8	34.1
6H	39.6	41.0	40.0	41.4	41.8	31.8	33.3	32.2	33.6	34.0
8H	39.8	41.2	40.2	41.6	42.0	31.8	33.2	32.2	33.6	34.0
12H	39.9	41.3	40.4	41.7	42.1	31.8	33.1	32.2	33.5	33.9
4H 2H	34.7	36.2	35.1	36.6	36.9	33.2	34.8	33.6	35.1	35.5
3H	39.1	40.4	39.5	40.8	41.2	33.3	34.6	33.7	35.0	35.4
4H	40.5	41.7	40.9	42.1	42.5	33.3	34.4	33.7	34.9	35.3
6H	41.0	42.0	41.4	42.5	42.9	33.2	34.3	33.7	34.7	35.2
8H	41.2	42.2	41.7	42.6	43.1	33.2	34.2	33.7	34.6	35.1
12H	41.5	42.3	41.9	42.8	43.3	33.2	34.1	33.7	34.6	35.0
8H 4H	40.5	41.5	41.0	42.0	42.4	34.3	35.2	34.7	35.7	36.2
6H	41.1	41.9	41.6	42.4	42.8	34.2	35.1	34.7	35.5	36.0
8H	41.4	42.1	41.9	42.6	43.1	34.2	35.0	34.7	35.5	35.9
12H	41.8	42.4	42.3	42.9	43.5	34.2	34.9	34.7	35.4	35.9
12H 4H	40.5	41.4	41.0	41.9	42.4	34.4	35.3	34.9	35.8	36.2
6H	41.1	41.8	41.6	42.2	42.8	34.4	35.1	34.9	35.6	36.1
8H	41.4	42.0	41.9	42.5	43.1	34.4	35.0	34.9	35.5	36.1
CIE190: 2010										

CIE190: 2010  
Area: 0.084 m2

C Range: 0 - 360DEG  
C Interval: 15.0DEG  
Test Speed: HIGH  
Temperature: 25.1DEG  
Operators: Alan Wang  
Test Date: 18 July 2021

γ Range: 0 - 180DEG  
γ Interval: 1.0DEG  
Test System: EVERFINE GO-R5000\_V2 SYSTEM V2.00.442T2  
Humidity: 52.2%  
Test Distance: 2.500m [K=1.0469]  
Remarks:

## UTILIZATION FACTORS TABLE

Test:U:277.00V I:0.8636A P:237.72W PF:0.9937 Freq:60.00Hz Lamp Flux:31680x lm		
NAME: ASD Lighting Corp	TYPE: LED	WEIGHT:
SPEC.: ASD-LSB2HV-240D50B-PRM	DIM.:	SERIAL No.:
MFR.: ASD Lighting Corp	SUR.:	Shielding Angle:

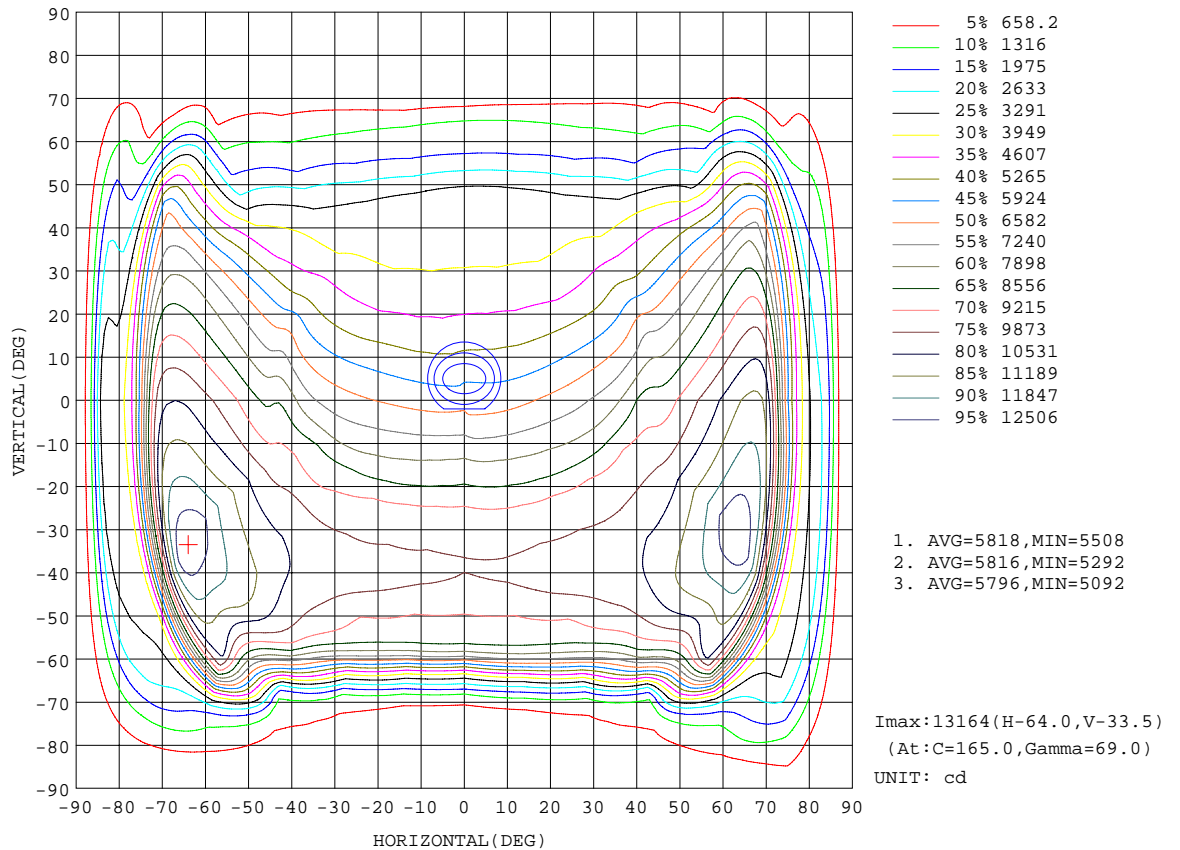
REFLECTANCE										
Ceiling	0.8	0.8	0.8	0.7	0.7	0.7	0.5	0.5	0.5	0
Walls	0.7	0.5	0.3	0.7	0.5	0.3	0.7	0.5	0.3	0
Working plane	0.2	0.2	0.2	0.2	0.2	0.2	0.2	0.2	0.2	0
ROOM INDEX	UTILIZATION FACTORS(PERCENT) $k(RI) \times RCR = 5$									
k = 0.60	50	37	29	49	37	29	48	36	29	22
0.80	60	47	39	59	47	39	57	46	38	30
1.00	69	57	48	68	56	48	65	58	47	39
1.25	77	65	57	75	64	56	72	63	55	47
1.50	83	71	63	81	70	63	78	68	61	53
2.00	91	81	73	89	79	72	85	77	71	62
2.50	95	86	79	93	85	79	89	82	77	68
3.00	99	91	85	97	90	84	93	87	82	73
4.00	104	98	92	102	96	91	97	92	88	79
5.00	107	102	97	105	100	95	100	96	92	83
ROOM INDEX	UF(total)									Direct
According to DIN EN 13032-2 2004			Suspended				SHRNOM = 1.25			

C Range: 0 - 360DEG  
 C Interval: 15.0DEG  
 Test Speed: HIGH  
 Temperature: 25.1DEG  
 Operators: Alan Wang  
 Test Date: 18 July 2021

$\gamma$  Range: 0 - 180DEG  
 $\gamma$  Interval: 1.0DEG  
 Test System: EVERFINE GO-R5000\_V2 SYSTEM V2.00.442T2  
 Humidity: 52.2%  
 Test Distance: 2.500m [K=1.0469]  
 Remarks:

ISOCANDELA DIAGRAM

Test:U:277.00V I:0.8636A P:237.72W PF:0.9937 Freq:60.00Hz Lamp Flux:31680x lm		
NAME: ASD Lighting Corp	TYPE: LED	WEIGHT:
SPEC.: ASD-LSB2HV-240D50B-PRM	DIM.:	SERIAL No.:
MFR.: ASD Lighting Corp	SUR.:	Shielding Angle:



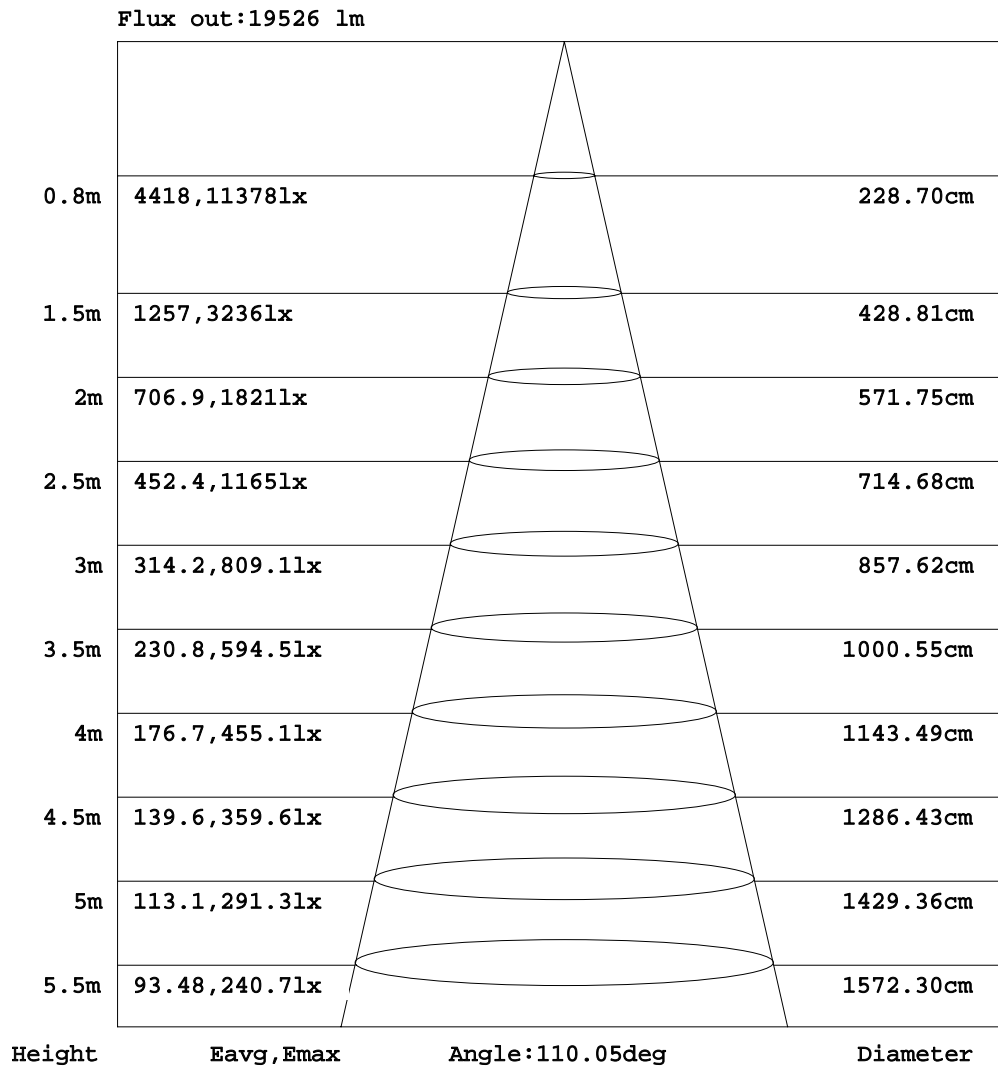
C Range: 0 - 360DEG  
 C Interval: 15.0DEG  
 Test Speed: HIGH  
 Temperature: 25.1DEG  
 Operators: Alan Wang  
 Test Date: 18 July 2021

γ Range: 0 - 180DEG  
 γ Interval: 1.0DEG  
 Test System: EVERFINE GO-R5000\_V2 SYSTEM V2.00.442T2  
 Humidity: 52.2%  
 Test Distance: 2.500m [K=1.0469]  
 Remarks:



AAI Figure

Test:U:277.00V I:0.8636A P:237.72W PF:0.9937 Freq:60.00Hz Lamp Flux:31680x lm		
NAME: ASD Lighting Corp	TYPE: LED	WEIGHT:
SPEC.: ASD-LSB2HV-240D50B-PRM	DIM.:	SERIAL No.:
MFR.: ASD Lighting Corp	SUR.:	Shielding Angle:



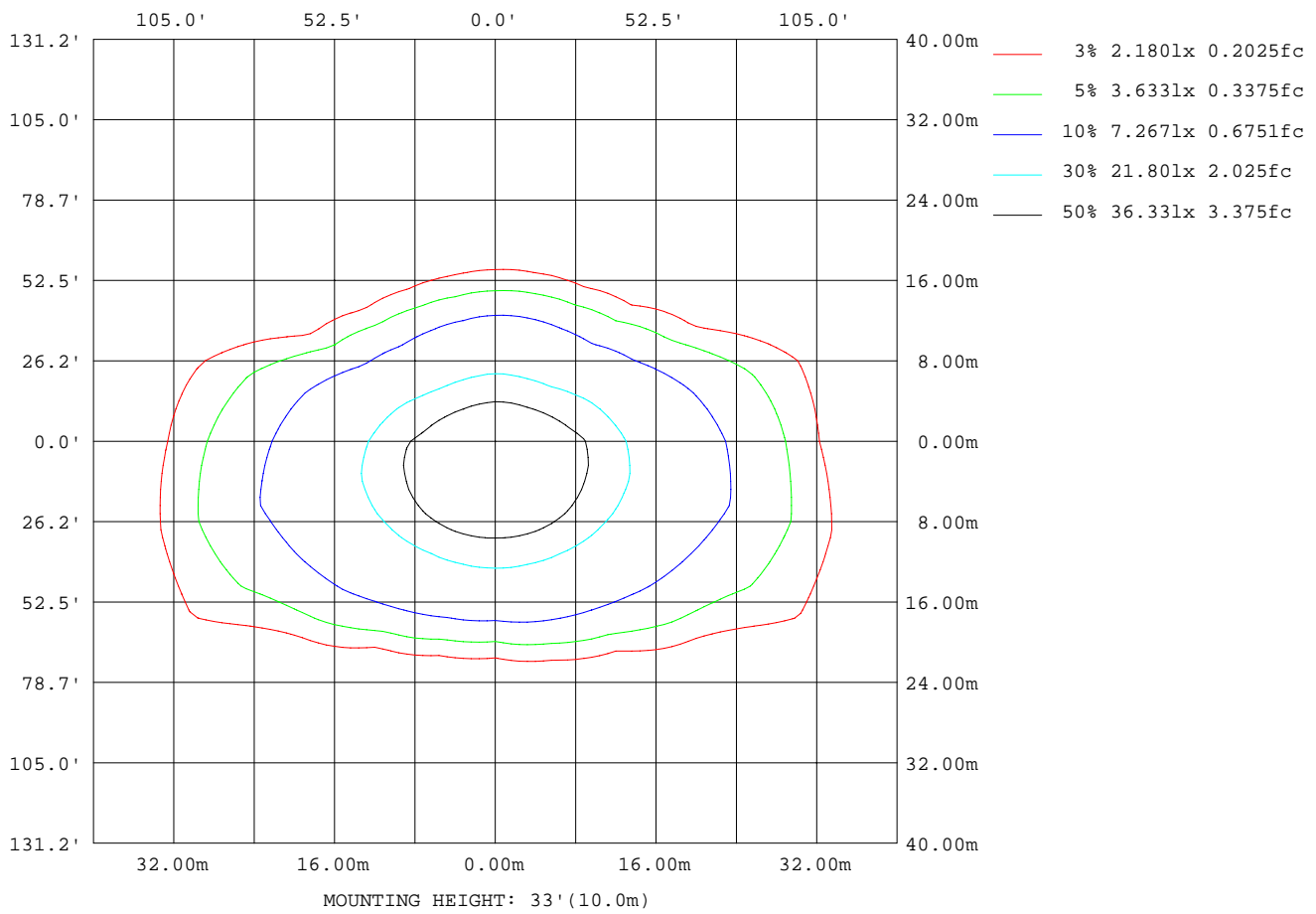
Note:The Curves indicate the illuminated area and the average illumination when the luminaire is at different distance.

C Range: 0 - 360DEG  
 C Interval: 15.0DEG  
 Test Speed: HIGH  
 Temperature: 25.1DEG  
 Operators: Alan Wang  
 Test Date: 18 July 2021

γ Range: 0 - 180DEG  
 γ Interval: 1.0DEG  
 Test System: EVERFINE GO-R5000\_V2 SYSTEM V2.00.442T2  
 Humidity: 52.2%  
 Test Distance: 2.500m [K=1.0469]  
 Remarks:

ISOLUX DIAGRAM

Test:U:277.00V I:0.8636A P:237.72W PF:0.9937 Freq:60.00Hz Lamp Flux:31680x lm		
NAME: ASD Lighting Corp	TYPE: LED	WEIGHT:
SPEC.: ASD-LSB2HV-240D50B-PRM	DIM.:	SERIAL No.:
MFR.: ASD Lighting Corp	SUR.:	Shielding Angle:



C Range: 0 - 360DEG  
 C Interval: 15.0DEG  
 Test Speed: HIGH  
 Temperature: 25.1DEG  
 Operators: Alan Wang  
 Test Date: 18 July 2021

$\gamma$  Range: 0 - 180DEG  
 $\gamma$  Interval: 1.0DEG  
 Test System: EVERFINE GO-R5000\_V2 SYSTEM V2.00.442T2  
 Humidity: 52.2%  
 Test Distance: 2.500m [K=1.0469]  
 Remarks:

## LED Avg.L Report

Test:U:277.00V I:0.8636A P:237.72W PF:0.9937 Freq:60.00Hz Lamp Flux:31680x lm		
NAME: ASD Lighting Corp	TYPE: LED	WEIGHT:
SPEC.: ASD-LSB2HV-240D50B-PRM	DIM.:	SERIAL No.:
MFR.: ASD Lighting Corp	SUR.:	Shielding Angle:

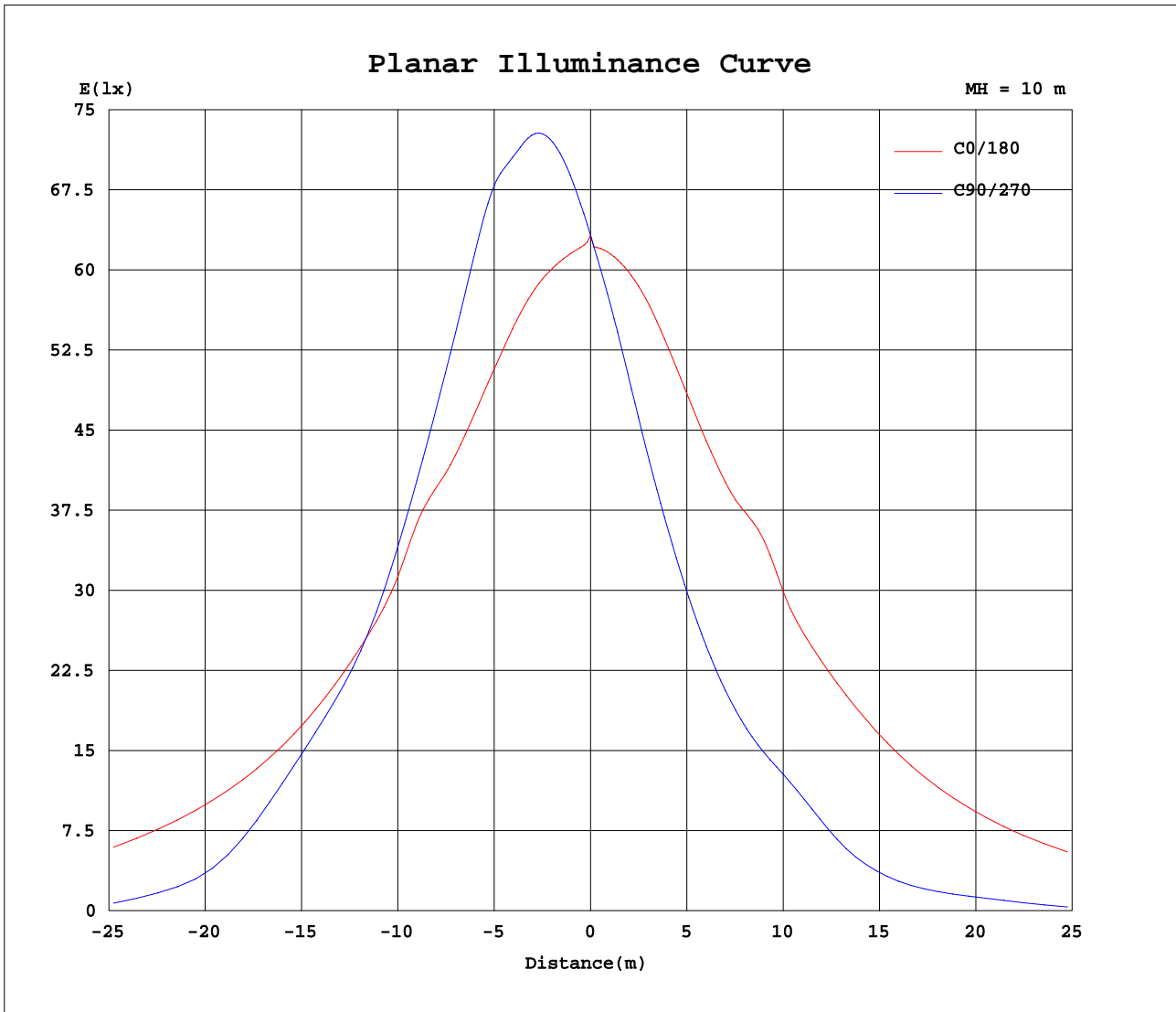
AvgL	cd/m2
L_0~180(65)av	306161
L_0~180(75)av	281741
L_0~180(85)av	305972
L_90~270(65)av	60114
L_90~270(75)av	15489
L_90~270(85)av	12962
L_45(65)av	150155
L_45(75)av	42125
L_45(85)av	27272

Standard: GB/T 29293-2012

C Range: 0 - 360DEG  
 C Interval: 15.0DEG  
 Test Speed: HIGH  
 Temperature: 25.1DEG  
 Operators: Alan Wang  
 Test Date: 18 July 2021

$\gamma$  Range: 0 - 180DEG  
 $\gamma$  Interval: 1.0DEG  
 Test System: EVERFINE GO-R5000\_V2 SYSTEM V2.00.442T2  
 Humidity: 52.2%  
 Test Distance: 2.500m [K=1.0469]  
 Remarks:

Planar Illuminance Curve



C Range: 0 - 360DEG  
 C Interval: 15.0DEG  
 Test Speed: HIGH  
 Temperature: 25.1DEG  
 Operators: Alan Wang  
 Test Date: 18 July 2021

$\gamma$  Range: 0 - 180DEG  
 $\gamma$  Interval: 1.0DEG  
 Test System: EVERFINE GO-R5000\_V2 SYSTEM V2.00.442T2  
 Humidity: 52.2%  
 Test Distance: 2.500m [K=1.0469]  
 Remarks:

LUMINOUS DISTRIBUTION INTENSITY DATA

Test:U:277.00V I:0.8636A P:237.72W PF:0.9937 Freq:60.00Hz Lamp Flux:31680x lm		
NAME: ASD Lighting Corp	TYPE: LED	WEIGHT:
SPEC.: ASD-LSB2HV-240D50B-PRM	DIM.:	SERIAL No.:
MFR.: ASD Lighting Corp	SUR.:	Shielding Angle:

Table--1

UNIT: x10cd

C(DEG) γ (DEG)	0	15	30	45	60	75	90	105	120	135	150	165	180	195	210	225	240	255	270
0	633	633	633	633	633	633	633	633	633	633	633	633	633	633	633	633	633	633	633
5	624	637	649	660	669	676	688	685	679	668	655	639	624	611	600	590	583	580	585
10	634	660	686	707	723	734	748	743	730	711	688	661	631	605	581	560	544	536	540
15	652	692	728	757	779	793	808	799	781	755	723	685	643	603	564	531	507	494	497
20	674	726	771	806	831	848	862	851	829	798	758	710	655	602	549	503	473	458	460
25	699	761	814	856	886	906	928	916	888	847	796	737	671	603	533	476	443	427	427
30	732	802	869	923	952	964	974	968	949	915	854	774	693	606	517	452	416	399	399
35	776	870	937	968	979	981	985	985	973	946	911	850	730	619	507	432	391	375	375
40	857	939	961	992	1001	992	987	997	1002	983	939	912	812	653	509	413	371	361	362
45	884	976	1011	1029	1009	978	963	978	1008	1031	1016	957	845	690	492	388	361	359	362
50	932	1023	1048	1033	977	930	918	927	970	1034	1047	1014	887	698	473	361	332	314	323
55	998	1101	1083	1006	918	895	885	892	916	1011	1089	1096	951	725	444	319	256	228	231
60	1064	1191	1116	961	855	776	678	731	855	984	1125	1177	1004	747	390	234	180	164	165
65	1127	1295	1095	886	591	396	298	342	540	912	1129	1282	1047	754	272	157	134	121	129
70	1094	1275	1049	595	218	119	78.3	89.3	174	548	1053	1305	1034	721	178	99.1	66.5	38.5	37.9
75	598	879	977	134	67.9	43.9	36.3	40.6	64.7	129	977	815	627	653	84.6	47.7	34.4	29.3	31.1
80	336	383	256	68.4	36.9	27.4	23.8	25.3	34.3	69.0	275	330	381	176	31.5	27.7	20.0	21.2	20.9
85	178	242	83.4	33.2	18.5	15.4	12.3	13.0	15.4	27.6	81.1	164	270	26.8	11.2	7.47	6.53	5.09	6.69
90	9.07	25.5	12.3	4.68	4.47	4.26	2.21	2.68	2.75	2.87	7.26	13.0	8.56	4.49	2.39	1.08	0.47	0.15	0.11
95	2.21	2.15	1.14	0.42	0.29	0.33	0.10	0.09	0.10	0.28	0.86	1.68	3.33	2.01	0.95	0.53	0.33	0.24	0.20
100	0.42	0.32	0.22	0.13	0.08	0.07	0.07	0.08	0.12	0.19	0.28	0.38	0.87	0.87	0.75	0.61	0.48	0.37	0.32
105	0.46	0.36	0.25	0.15	0.10	0.09	0.09	0.10	0.16	0.24	0.34	0.44	0.90	0.88	0.79	0.68	0.60	0.48	0.44
110	0.51	0.40	0.27	0.17	0.12	0.11	0.12	0.14	0.20	0.29	0.40	0.51	0.86	0.85	0.78	0.71	0.65	0.56	0.51
115	0.56	0.43	0.29	0.19	0.14	0.14	0.14	0.17	0.23	0.33	0.45	0.56	0.83	0.84	0.80	0.73	0.70	0.63	0.56
120	0.61	0.48	0.34	0.23	0.18	0.17	0.18	0.20	0.27	0.36	0.50	0.63	0.81	0.85	0.82	0.78	0.78	0.72	0.65
125	0.68	0.53	0.38	0.27	0.21	0.21	0.22	0.25	0.31	0.38	0.55	0.69	0.82	0.90	0.88	0.89	0.88	0.82	0.77
130	0.72	0.56	0.42	0.31	0.26	0.25	0.27	0.30	0.35	0.41	0.57	0.73	0.87	0.97	0.96	0.98	0.96	0.93	0.88
135	0.72	0.58	0.45	0.35	0.31	0.30	0.32	0.35	0.39	0.46	0.57	0.73	0.89	0.99	1.02	1.03	1.01	1.01	0.97
140	0.68	0.58	0.48	0.40	0.36	0.36	0.38	0.41	0.45	0.49	0.56	0.70	0.88	0.97	1.02	1.05	1.05	1.06	1.05
145	0.63	0.57	0.50	0.44	0.41	0.41	0.44	0.47	0.50	0.52	0.55	0.66	0.88	0.96	1.02	1.06	1.08	1.10	1.11
150	0.60	0.57	0.52	0.48	0.46	0.47	0.50	0.53	0.55	0.55	0.57	0.62	0.90	0.96	1.03	1.07	1.10	1.13	1.14
155	0.62	0.60	0.57	0.54	0.53	0.55	0.59	0.61	0.63	0.62	0.61	0.65	0.92	0.97	1.02	1.07	1.10	1.14	1.17
160	0.65	0.64	0.61	0.60	0.60	0.63	0.67	0.69	0.69	0.67	0.64	0.66	0.94	0.96	0.99	1.04	1.08	1.12	1.16
165	0.68	0.68	0.67	0.67	0.69	0.72	0.76	0.77	0.77	0.74	0.72	0.70	0.94	0.94	0.96	0.98	1.01	1.04	1.10
170	0.73	0.74	0.74	0.74	0.76	0.79	0.82	0.83	0.82	0.79	0.76	0.73	0.93	0.93	0.93	0.94	0.94	0.96	1.02
175	0.82	0.82	0.81	0.81	0.83	0.86	0.90	0.91	0.90	0.88	0.86	0.84	0.93	0.93	0.94	0.94	0.93	0.94	0.97
180	0.92	0.92	0.92	0.92	0.92	0.92	0.92	0.92	0.92	0.92	0.92	0.92	0.91	0.91	0.91	0.91	0.91	0.91	0.91

C Range: 0 - 360DEG  
 C Interval: 15.0DEG  
 Test Speed: HIGH  
 Temperature: 25.1DEG  
 Operators: Alan Wang  
 Test Date: 18 July 2021

γ Range: 0 - 180DEG  
 γ Interval: 1.0DEG  
 Test System: EVERFINE GO-R5000\_V2 SYSTEM V2.00.442T2  
 Humidity: 52.2%  
 Test Distance: 2.500m [K=1.0469]  
 Remarks:

LUMINOUS DISTRIBUTION INTENSITY DATA

Test:U:277.00V I:0.8636A P:237.72W PF:0.9937 Freq:60.00Hz Lamp Flux:31680x lm		
NAME: ASD Lighting Corp	TYPE: LED	WEIGHT:
SPEC.: ASD-LSB2HV-240D50B-PRM	DIM.:	SERIAL No.:
MFR.: ASD Lighting Corp	SUR.:	Shielding Angle:

Table--2

UNIT: x10cd

C(DEG) γ (DEG)	285	300	315	330	345														
0	633	633	633	633	633														
5	587	590	596	604	614														
10	544	553	567	586	608														
15	503	516	540	572	609														
20	466	484	515	562	616														
25	433	452	491	553	626														
30	404	424	467	544	639														
35	379	399	447	538	657														
40	364	379	432	542	690														
45	362	366	409	540	744														
50	332	346	382	522	742														
55	246	279	343	509	770														
60	172	191	267	471	798														
65	138	143	177	374	820														
70	52.5	83.4	122	247	807														
75	29.5	41.8	55.0	138	661														
80	23.5	24.3	30.5	41.3	228														
85	8.54	9.80	11.6	15.9	32.8														
90	0.26	0.82	1.89	3.11	5.75														
95	0.23	0.34	0.64	1.25	2.54														
100	0.36	0.48	0.67	0.81	0.86														
105	0.48	0.59	0.73	0.83	0.87														
110	0.53	0.62	0.74	0.80	0.82														
115	0.57	0.64	0.73	0.78	0.81														
120	0.64	0.69	0.77	0.81	0.82														
125	0.76	0.79	0.86	0.89	0.87														
130	0.87	0.90	0.96	1.01	0.96														
135	0.94	0.96	1.01	1.05	1.01														
140	1.01	1.00	1.02	1.04	0.98														
145	1.07	1.04	1.02	1.02	0.96														
150	1.11	1.07	1.04	1.02	0.95														
155	1.15	1.11	1.06	1.03	0.96														
160	1.16	1.14	1.09	1.05	0.97														
165	1.12	1.11	1.08	1.04	0.96														
170	1.04	1.05	1.03	1.00	0.93														
175	1.00	1.00	0.99	0.96	0.89														
180	0.91	0.91	0.91	0.91	0.91														

C Range: 0 - 360DEG  
 C Interval: 15.0DEG  
 Test Speed: HIGH  
 Temperature: 25.1DEG  
 Operators: Alan Wang  
 Test Date: 18 July 2021

γ Range: 0 - 180DEG  
 γ Interval: 1.0DEG  
 Test System: EVERFINE GO-R5000\_V2 SYSTEM V2.00.442T2  
 Humidity: 52.2%  
 Test Distance: 2.500m [K=1.0469]  
 Remarks: