

ASD[®] LED DISK LIGHT

► **DESIGN** - LED DISK LIGHT with a classic, low-profile design is an ideal solution for low ceilings. The acrylic lens with a 120° beam angle grants you even light distribution. With 2.5kV surge protection, it is designed to operate on 120V circuits.

► **MOTION SENSOR** - The built-in motion sensor turns off the fixture automatically when no motion is detected.

► **COLOR SELECTABLE** - You can choose either a 2,700K soft white, 3,000K warm white, 3,500K neutral white, 4,000K cool white, or 5,000K daylight color temperature.

► **CRI90+** rating provides rich and natural colors and keeps your space looking and feeling vibrant. True bright colors also improve your mood and general health.

► **DIMMING** - Smooth triac dimming capabilities ranging from 10% to 100% with modern LED dimmers allow you to control the look and feel of your space.

► **INSTALLATION** - The fixture can be installed on either an existing outlet box or a remodeled can by using a retrofit kit with universal TP24 or E26 connectors. 2.75", 3.5" and 4" mounting holes help you expand your installation options. It is also Wet Locations rated.

► **ADVANTAGES** - With a lifespan of 50,000 hours, these fixtures are made to last decades under normal operation! ASD provides a 5-year limited warranty along with ETL and Energy Star certifications to guarantee top quality products and safety!

Catalog number	
Notes	
Type	



Finish: White Black

Model	Size	Watts	Voltage	Dimmable	Lumens	CCT	Finish	Dimensions (LxH)	Option
ASD-LDS-4D1030-WH-6PACK	4 inch	10W	120 V	TRIAC	650 lm	3,000 K	White	5-7/8" x 7/8"	-
ASD-LDS-4D1040-WH-6PACK	4 inch	10W	120 V	TRIAC	650 lm	4,000 K	White	5-7/8" x 7/8"	-
ASD-LDS-4D1050-WH-6PACK	4 inch	10W	120 V	TRIAC	650 lm	5,000 K	White	5-7/8" x 7/8"	-
ASD-LDS-6D1530-WH-6PACK	6 inch	15W	120 V	TRIAC	1,200 lm	3,000 K	White	7-5/16" x 15/16"	-
ASD-LDS-6D1530-WH-12PACK	6 inch	15W	120 V	TRIAC	1,200 lm	3,000 K	White	7-5/16" x 15/16"	-
ASD-LDS-6D1540-WH-6PACK	6 inch	15W	120 V	TRIAC	1,300 lm	4,000 K	White	7-5/16" x 15/16"	-
ASD-LDS-6D1540-WH-12PACK	6 inch	15W	120 V	TRIAC	1,300 lm	4,000 K	White	7-5/16" x 15/16"	-
ASD-LDS-6D1550-WH-6PACK	6 inch	15W	120 V	TRIAC	1,300 lm	5,000 K	White	7-5/16" x 15/16"	-
ASD-LDS-6D1550-WH-12PACK	6 inch	15W	120 V	TRIAC	1,300 lm	5,000 K	White	7-5/16" x 15/16"	-
LDS-MS WITH MOTION SENSOR									
ASD-LDS-6N15AC-MS-WH-6PACK	6 inch	15W	120 V	-	1,050/1,121/1,135/1,149/1,134 lm	5CCT (2,700/3,000/3,500/4,000/5,000 K)	White	7-5/16" x 1-1/4"	Motion sensor
ASD-LDS-6N15AC-MS-BK-6PACK	6 inch	15W	120 V	-	1,050/1,121/1,135/1,149/1,134 lm	5CCT (2,700/3,000/3,500/4,000/5,000 K)	Black	7-5/16" x 1-1/4"	Motion sensor

PRODUCT SPECIFICATIONS:

Construction & Materials						
Housing	Iron					
Diffuser	Acrylic					
Finish	White, Black					
Weight	ASD-LDS-4D1030-WH-6PACK	2.8 lbs (1.3 kg)	ASD-LDS-6D1530-WH-6PACK	3.5 lbs (1.6 kg)	ASD-LDS-6D1550-WH-6PACK	3.5 lbs (1.6 kg)
	ASD-LDS-4D1040-WH-6PACK		ASD-LDS-6D1530-WH-12PACK	7.3 lbs (3.3 kg)	ASD-LDS-6D1550-WH-12PACK	7.3 lbs (3.3 kg)
	ASD-LDS-4D1050-WH-6PACK		ASD-LDS-6D1540-WH-6PACK	3.5 lbs (1.6 kg)	ASD-LDS-6N15AC-MS-WH-6PACK	5.3 lbs (2.4 kg)
			ASD-LDS-6D1540-WH-12PACK	7.3 lbs (3.3 kg)	ASD-LDS-6N15AC-MS-BK-6PACK	
Environmental system						
Work environment	Suitable for Wet Locations					
Operating temperature	-4°F to 104°F (-20°C to 40°C)					
L-70 Life	> 50,000 hrs					

For most up-to-date spec sheets please refer to asd-lighting.com

ASD LIGHTING CORP

E-mail: orders@asd-lighting.com | Web site: www.asd-lighting.com





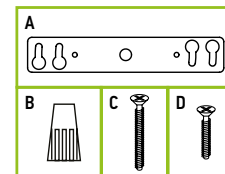
LED DISK LIGHT

Optical system						
Luminous flux	ASD-LDS-4D1030-WH-6PACK	650 lm	ASD-LDS-6D1530-WH-6PACK	1,200 lm	ASD-LDS-6D1550-WH-6PACK	1,300 lm
	ASD-LDS-4D1040-WH-6PACK		ASD-LDS-6D1530-WH-12PACK		ASD-LDS-6D1550-WH-12PACK	
	ASD-LDS-4D1050-WH-6PACK		ASD-LDS-6D1540-WH-6PACK		ASD-LDS-6N15AC-MS-WH-6PACK	
			ASD-LDS-6D1540-WH-12PACK		ASD-LDS-6N15AC-MS-BK-6PACK	1,050/1,121/1,135/1,149/1,134 lm
Color temperature	3,000 K; 4,000 K; 5,000 K					
	5CCT switch (2,700/3,000/3,500/4,000/5,000 K), 3,000 K by default					
CRI	> 90					
Electrical system						
Input voltage	120 V					
Max input current	ASD-LDS-4D1030-WH-6PACK	0.1 A	ASD-LDS-6D1530-WH-6PACK	0.15 A	ASD-LDS-6D1550-WH-6PACK	0.15 A
	ASD-LDS-4D1040-WH-6PACK		ASD-LDS-6D1530-WH-12PACK		ASD-LDS-6D1550-WH-12PACK	
	ASD-LDS-4D1050-WH-6PACK		ASD-LDS-6D1540-WH-6PACK		ASD-LDS-6N15AC-MS-WH-6PACK	
			ASD-LDS-6D1540-WH-12PACK		ASD-LDS-6N15AC-MS-BK-6PACK	0.13 A
Inrush current (Action time)	0.2 A (0.01 S)					
Off state power	0W					
Power consumption	ASD-LDS-4D1030-WH-6PACK	10W	ASD-LDS-6D1530-WH-6PACK	15W	ASD-LDS-6D1550-WH-6PACK	15W
	ASD-LDS-4D1040-WH-6PACK		ASD-LDS-6D1530-WH-12PACK		ASD-LDS-6D1550-WH-12PACK	
	ASD-LDS-4D1050-WH-6PACK		ASD-LDS-6D1540-WH-6PACK		ASD-LDS-6N15AC-MS-WH-6PACK	
			ASD-LDS-6D1540-WH-12PACK		ASD-LDS-6N15AC-MS-BK-6PACK	
Power factor	> 0.9					
Output voltage	132 V					
Max output current	ASD-LDS-4D1030-WH-6PACK	0.067 A	ASD-LDS-6D1530-WH-6PACK	0.65 A	ASD-LDS-6D1550-WH-6PACK	0.65 A
	ASD-LDS-4D1040-WH-6PACK		ASD-LDS-6D1530-WH-12PACK		ASD-LDS-6D1550-WH-12PACK	
	ASD-LDS-4D1050-WH-6PACK		ASD-LDS-6D1540-WH-6PACK		ASD-LDS-6N15AC-MS-WH-6PACK	
			ASD-LDS-6D1540-WH-12PACK		ASD-LDS-6N15AC-MS-BK-6PACK	0.1 A
Surge protection DM/CM	2.5 kV / 25 kV					
Dimming range						
10-100%						
Dimming compatible controls *						
Brand	Lutron			Leviton		
Models	DWV-603PGH-WH	DVLV-603P-IV	S-600P	0B33K1	6674	
	MACL-153M-WH	CTCL-153PDH	S-603P	6633-P	6672	
	DVCL-153P-WH	CT-603PG		1E1205	6631	
	SLV-600P-WH	DV-600P		1F4205		
Regular and voluntary certifications						
5-year limited warranty						
UL certified E473804 (for MS models)			cETLus certified 4008281 (except MS models)			
Energy Star listed						
Title 24 JAB-2022 compliant						

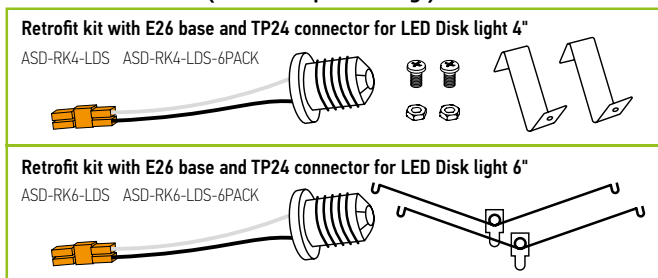
* The list of dimmers is relevant for models without a motion sensor.

PACKAGE CONTENTS:

Description	Q-ty
LED Disk Light	6 (12 for 12 pack)
Crossbar (A) only for 4" models	1
Wire nut (B)	3
1-1/2" screw (C)	2
1/2" screw (D)	2
Box	1



ACCESSORIES (sold separately):



ACCESSORY COMPATIBILITY LIST:

Accessories	Retrofit kit with E26 base and TP24 connector for LED Disk Light 4" ASD-RK4-LDS ASD-RK4-LDS-6PACK	Retrofit kit with E26 base and TP24 connector for LED Disk Light 6" ASD-RK6-LDS ASD-RK6-LDS-6PACK
ASD-LDS-4D1030-WH-6PACK	•	
ASD-LDS-4D1040-WH-6PACK	•	
ASD-LDS-4D1050-WH-6PACK	•	
ASD-LDS-6D1530-WH-6PACK		•
ASD-LDS-6D1530-WH-12PACK		•
ASD-LDS-6D1540-WH-6PACK		•
ASD-LDS-6D1540-WH-12PACK		•
ASD-LDS-6D1550-WH-6PACK		•
ASD-LDS-6D1550-WH-12PACK		•
ASD-LDS-6N15AC-MS-WH-6PACK		•
ASD-LDS-6N15AC-MS-BK-6PACK		•

For most up-to-date spec sheets please refer to asd-lighting.com

ASD LIGHTING CORP

E-mail: orders@asd-lighting.com | Web site: www.asd-lighting.com





LED DISK LIGHT

INSTALLATION GUIDE

IMPORTANT SAFETY INFORMATION:

Please read all the instructions below before installation.

- ▶ Make sure that the supply voltage corresponds to the rated product voltage.
- ▶ The product must be installed by a qualified electrician in accordance with the National Electrical Code and corresponding local codes.
- ▶ If the product is damaged, do not use it.

⚠ WARNING

RISK OF PERSONAL INJURY – READ and follow all WARNINGS and installation instructions. Keep or give to the owner for future reference.

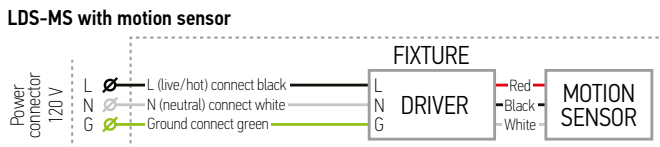
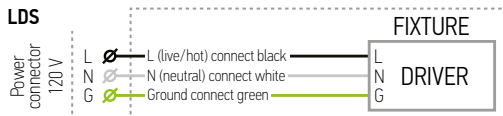
Risk of cuts: Wear gloves to prevent cuts or abrasions when removing from carton, handling, installing, and maintaining this product.

Risk of electric shock: This product must be installed in accordance with the applicable installation code by a person familiar with the construction and operation of the product and the hazards involved.

Risk of Fire: Minimum 194°F supply conductors. Consult a qualified electrician to ensure correct branch circuit conductor.

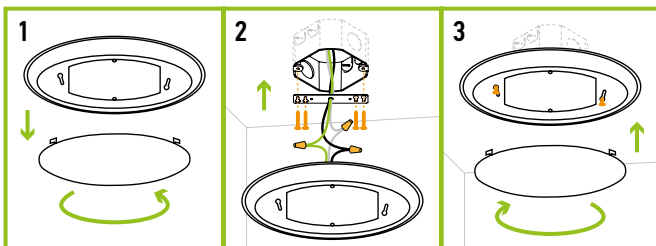
ASD® assumes no responsibility for claims arising out of improper or careless installation or handling of this product.

ELECTRICAL SCHEMATIC DIAGRAM:



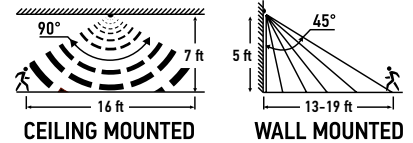
JUNCTION BOX INSTALLATION 4":

1. Remove the Lens by turning it counter clockwise.
2. Attach the crossbar to the outlet box using two screws. Insert another two screws into the crossbar. Connect the wires: Black to Black, White to White, Green to Green. Secure the connection with wire nuts. Tuck all the wires into the outlet box.
3. Attach the fixture to the crossbar by feeding screws through the keyhole slots and then tighten the screws in the narrow end of the keyhole slots. Do not over tighten. Place the Lens back and turn it clockwise to fix.



BUILT-IN MOTION SENSOR INFORMATION

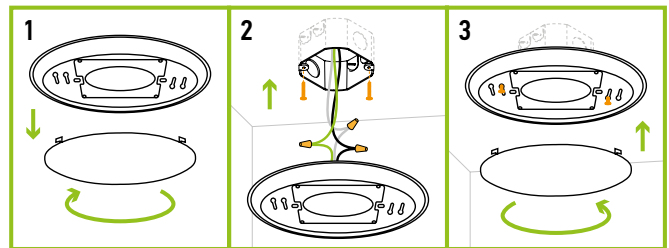
- The light is ON for 12 sec., after you turn ON the power.
- The light is ON when movement is detected.
- After last detection the lights remains ON for 1/5/10 min. as prefer.
- After stand-by period, light turns OFF automatically.



⚠ RF interference may affect the operation of this sensor

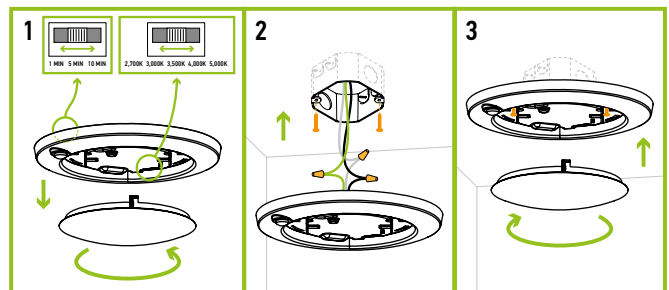
JUNCTION BOX INSTALLATION 6":

1. Remove the Lens by turning it clockwise.
2. Insert two screws into the outlet box. Connect the wires: Black to Black, White to White, Green to Green. Secure the connection with wire nuts. Tuck all the wires into the outlet box.
3. Attach the fixture to the outlet box by feeding screws through the keyhole slots and then tighten the screws in the narrow end of the keyhole slots. Do not over tighten. Place the Lens back and turn it counter clockwise to fix.



JUNCTION BOX INSTALLATION 6" WITH MS:

1. Remove the Lens by turning it counter clockwise. Choose preferred color temperature by adjusting the switch position. Choose preferred motion sensor settings.
2. Insert two screws into the outlet box. Connect the wires: Black to Black, White to White, Green to Green. Secure the connection with wire nuts. Tuck all the wires into the outlet box.
3. Attach the fixture to the outlet box by feeding screws through the keyhole slots and then tighten the screws in the narrow end of the keyhole slots. Do not over tighten. Place the Lens back and turn it clockwise to fix.



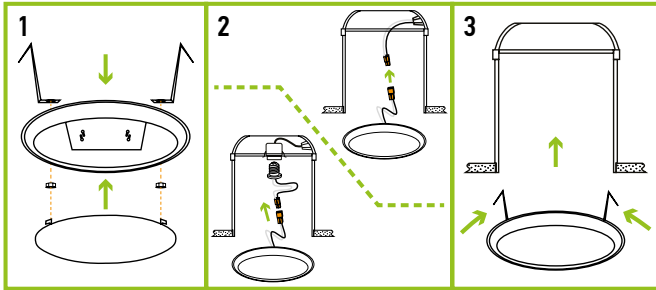
For most up-to-date spec sheets please refer to asd-lighting.com



LED DISK LIGHT

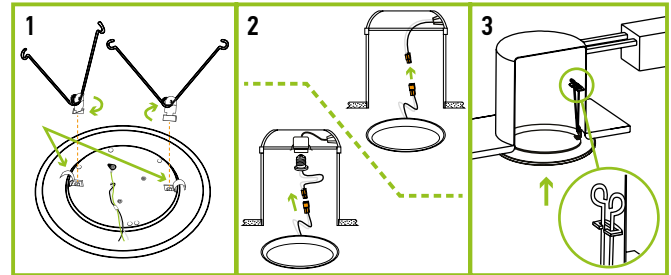
RECESSED CAN INSTALLATION 4" ASD-RK4-LDS sold separately:

1. Remove the existing fixture. Remove the Lens by turning it counter clockwise. Attach remodeled clips. Secure with screws and nut. Place the Lens back and turn it clockwise.
2. Link TP24 connector with the fixture wires. Connect the E26 Adapter and thread it into the socket of the recessed Can or connect it with TP24 of the recessed Can directly.
3. Carefully route wires, and push fixture up to ceiling surface.



RECESSED CAN INSTALLATION 6" ASD-RK6-LDS sold separately:

1. Place the spring clip arms into the rectangular slots and twist them in a locked position. The spring clips must be adjusted depending on the Can size.
2. Link TP24 connector with the fixture wires. Connect the E26 Adapter and thread it into the socket of the recessed Can or connect it with TP24 of the recessed Can directly.
3. Squeeze the two sets of spring clip arms up towards each other. Carefully route wires into the Can, and hook both sets of spring clip arms into the arm hooks on the inside wall of the Can. Release spring clip arms and gently push the Disk Light up into the Can until flush against the ceiling surface.



ORDERING INFORMATION

Model	UPC	Pcs. per carton	Carton size	Carton weight	GTIN 14
ASD-LDS-4D1030-WH-6PACK	810050738606	2	13.4" x 6.9" x 7.5"	6.8 lbs	10810050738603
ASD-LDS-4D1040-WH-6PACK	810050738521	2	13.4" x 6.9" x 7.5"	6.8 lbs	10810050738528
ASD-LDS-4D1050-WH-6PACK	810050738538	2	13.4" x 6.9" x 7.5"	6.8 lbs	10810050738535
ASD-LDS-6D1530-WH-6PACK	810050737401	2	16.3" x 8.9" x 6.9"	8.2 lbs	10810050737408
ASD-LDS-6D1530-WH-12PACK	810050737821	1	15.4" x 6.1" x 8.1"	7.9 lbs	-
ASD-LDS-6D1540-WH-6PACK	810050737418	2	16.3" x 8.9" x 6.9"	8.2 lbs	10810050737415
ASD-LDS-6D1540-WH-12PACK	810050738774	1	15.4" x 6.1" x 8.1"	7.9 lbs	-
ASD-LDS-6D1550-WH-6PACK	810050737425	2	16.3" x 8.9" x 6.9"	8.2 lbs	10810050737422
ASD-LDS-6D1550-WH-12PACK	810128111515	1	15.4" x 6.1" x 8.1"	7.9 lbs	-
LDS-MS WITH MOTION SENSOR					
ASD-LDS-6N15AC-MS-WH-6PACK	810050738576	2	16.1" x 9.1" x 9.1"	12.1 lbs	10810050738573
ASD-LDS-6N15AC-MS-BK-6PACK	810128111539	2	16.1" x 9.1" x 9.1"	12.1 lbs	10810128111529

ACCESSORIES:

Model	Description	Weight	UPC
ASD-RK4-LDS	Retrofit kit with E26 base and TP24 connector for LED Disk Light 4"	0.1 lbs	810050730105
ASD-RK4-LDS-6PACK	Retrofit kit with E26 base and TP24 connector for LED Disk Light 4" 6 pack	0.5 lbs	810050739375
ASD-RK6-LDS	Retrofit kit with E26 base and TP24 connector for LED Disk Light 6"	0.1 lbs	810050730112
ASD-RK6-LDS-6PACK	Retrofit kit with E26 base and TP24 connector for LED Disk Light 6" 6 pack	0.5 lbs	810050738897

Model	Pcs. in middle box	Middle box size	Middle box weight	GTIN 14 middle box	Pcs. per carton	Carton size	Carton weight	GTIN 14 in carton
ASD-RK4-LDS	12	5.2" x 4.3" x 5.2"	1.1 lbs	10810050730102	72	11.4" x 11.2" x 6.1"	7.3 lbs	20810050730109
ASD-RK4-LDS-6PACK	-	-	-	-	8	12.2" x 10.4" x 5.5"	4.6 lbs	10810050739372
ASD-RK6-LDS	12	7.5" x 3.5" x 7.5"	1.2 lbs	10810050730119	48	14.6" x 8.1" x 8.1"	5.5 lbs	20810050730116
ASD-RK6-LDS-6PACK	-	-	-	-	8	15.6" x 8.7" x 8.1"	6 lbs	10810050738894

For most up-to-date spec sheets please refer to asd-lighting.com

ASD LIGHTING CORP

E-mail: orders@asd-lighting.com | Web site: www.asd-lighting.com

