



LED RECESSED MINI PANEL

► **DESIGN** - LED RECESSED MINI PANEL with a classic, low-profile design is an ideal solution for low ceilings. This fixture has a J-box, plug & twist connector and spring-loaded clips, that makes the installation process quick and easy. The acrylic lens with a 110° beam angle and CRI90+ grants you even light. It is designed to operate on 120V circuits.

► **COLOR SELECTABLE** - You can choose either a 2,700K soft white, 3,000K warm white, 3,500K neutral white, 4,000K cool white, or 5,000K daylight color temperature.

► **DIMMING** - Smooth triac dimming capabilities ranging from 10% to 100% with modern LED dimmers allow you to control the look and feel of your space.

► **APPLICATION** - This fixture is IC rated so there is no can or any other housing required. It is also Wet Locations rated, making it perfect for kitchen, bathroom or any other common areas.

► **ADVANTAGES** - With a lifespan of 54,000 hours, these fixtures are made to last decades under normal operation! ASD provides a 5-year limited warranty along with UL and Energy Star certifications to guarantee top quality products and safety!

Catalog number	
Notes	
Type	



Finish:	White	Bronze
	Nickel	Black

Model	Size	Watts	Voltage	Dimmable	Lumens	CCT	Finish	Dimensions	Airtight	
JBR ROUND										
ASD-JBR-3D6AC-WH	3 inch	6W	120 V	TRIAC	420/445/460/455/436 lm	5CCT (2,700/3,000/3,500/4,000/5,000 K)	White	3-1/4" x 5/8"	-	
ASD-JBR-3D6AC-WH-6PACK	3 inch	6W	120 V	TRIAC	420/445/460/455/436 lm	5CCT (2,700/3,000/3,500/4,000/5,000 K)	White	3-1/4" x 5/8"	-	
ASD-JBR-3D6AC-NK-6PACK	3 inch	6W	120 V	TRIAC	420/445/460/455/436 lm	5CCT (2,700/3,000/3,500/4,000/5,000 K)	Nickel	3-1/4" x 5/8"	-	
ASD-JBR-3D6AC-BR	3 inch	6W	120 V	TRIAC	420/445/460/455/436 lm	5CCT (2,700/3,000/3,500/4,000/5,000 K)	Bronze	3-1/4" x 5/8"	-	
ASD-JBR-3D6AC-BZ-6PACK	3 inch	6W	120 V	TRIAC	420/445/460/455/436 lm	5CCT (2,700/3,000/3,500/4,000/5,000 K)	Bronze	3-1/4" x 5/8"	-	
ASD-JBR-3D6AC-BK	3 inch	6W	120 V	TRIAC	420/445/460/455/436 lm	5CCT (2,700/3,000/3,500/4,000/5,000 K)	Black	3-1/4" x 5/8"	-	
ASD-JBR-3D6AC-BK-6PACK	3 inch	6W	120 V	TRIAC	420/445/460/455/436 lm	5CCT (2,700/3,000/3,500/4,000/5,000 K)	Black	3-1/4" x 5/8"	-	
ASD-JBR-4D12AC-WH-6PACK	4 inch	12W	120 V	TRIAC	780/839/893/861/860 lm	5CCT (2,700/3,000/3,500/4,000/5,000 K)	White	4-11/16" x 5/8"	-	
ASD-JBR-4D12AC-WH-12PACK	4 inch	12W	120 V	TRIAC	780/839/893/861/860 lm	5CCT (2,700/3,000/3,500/4,000/5,000 K)	White	4-11/16" x 5/8"	-	
ASD-JBR-4D12AC-NK-6PACK	4 inch	12W	120 V	TRIAC	780/839/893/861/860 lm	5CCT (2,700/3,000/3,500/4,000/5,000 K)	Nickel	4-11/16" x 5/8"	-	
ASD-JBR-4D12AC-BR	4 inch	12W	120 V	TRIAC	780/839/893/861/860 lm	5CCT (2,700/3,000/3,500/4,000/5,000 K)	Bronze	4-11/16" x 5/8"	-	
ASD-JBR-4D12AC-BZ-6PACK	4 inch	12W	120 V	TRIAC	780/839/893/861/860 lm	5CCT (2,700/3,000/3,500/4,000/5,000 K)	Bronze	4-11/16" x 5/8"	-	
ASD-JBR-4D12AC-BK-6PACK	4 inch	12W	120 V	TRIAC	780/839/893/861/860 lm	5CCT (2,700/3,000/3,500/4,000/5,000 K)	Black	4-11/16" x 5/8"	-	
ASD-JBR-6D15AC-WH	6 inch	15W	120 V	TRIAC	1,100/1,137/1,225/1,153/1,094 lm	5CCT (2,700/3,000/3,500/4,000/5,000 K)	White	6-5/8" x 5/8"	-	
ASD-JBR-6D15AC-WH-6PACK	6 inch	15W	120 V	TRIAC	1,100/1,137/1,225/1,153/1,094 lm	5CCT (2,700/3,000/3,500/4,000/5,000 K)	White	6-5/8" x 5/8"	-	
ASD-JBR-6D15AC-WH-12PACK	6 inch	15W	120 V	TRIAC	1,100/1,137/1,225/1,153/1,094 lm	5CCT (2,700/3,000/3,500/4,000/5,000 K)	White	6-5/8" x 5/8"	-	
ASD-JBR-6D15AC-NK-6PACK	6 inch	15W	120 V	TRIAC	1,100/1,137/1,225/1,153/1,094 lm	5CCT (2,700/3,000/3,500/4,000/5,000 K)	Nickel	6-5/8" x 5/8"	-	
ASD-JBR-6D15AC-BZ-6PACK	6 inch	15W	120 V	TRIAC	1,100/1,137/1,225/1,153/1,094 lm	5CCT (2,700/3,000/3,500/4,000/5,000 K)	Bronze	6-5/8" x 5/8"	-	
ASD-JBR-6D15AC-BK-6PACK	6 inch	15W	120 V	TRIAC	1,100/1,137/1,225/1,153/1,094 lm	5CCT (2,700/3,000/3,500/4,000/5,000 K)	Black	6-5/8" x 5/8"	-	
ASD-JBR-8D20AC-WH	8 inch	20W	120 V	TRIAC	1,600/1,650/1,688/1,746/1,633 lm	5CCT (2,700/3,000/3,500/4,000/5,000 K)	White	8-11/16" x 5/8"	-	
ASD-JBR-8D20AC-BK	8 inch	20W	120 V	TRIAC	1,600/1,650/1,688/1,746/1,633 lm	5CCT (2,700/3,000/3,500/4,000/5,000 K)	Black	8-11/16" x 5/8"	-	
ASD-JBR-12D24AC-WH	12 inch	24W	120 V	TRIAC	1,950/2,142/2,138/2,169/2,077 lm	5CCT (2,700/3,000/3,500/4,000/5,000 K)	White	11-5/8" x 5/8"	-	
ASD-JBR-12D24AC-BK	12 inch	24W	120 V	TRIAC	1,950/2,142/2,138/2,169/2,077 lm	5CCT (2,700/3,000/3,500/4,000/5,000 K)	Black	11-5/8" x 5/8"	-	
JBS SQUARE										
ASD-JBS-3D6AC-WH-6PACK	3 inch	6W	120 V	TRIAC	420/442/456/445/430 lm	5CCT (2,700/3,000/3,500/4,000/5,000 K)	White	3-1/4" x 3-1/4" x 9/16"	-	
ASD-JBS-3D6AC-NK-6PACK	3 inch	6W	120 V	TRIAC	420/442/456/445/430 lm	5CCT (2,700/3,000/3,500/4,000/5,000 K)	Nickel	3-1/4" x 3-1/4" x 9/16"	-	
ASD-JBS-3D6AC-BZ-6PACK	3 inch	6W	120 V	TRIAC	420/442/456/445/430 lm	5CCT (2,700/3,000/3,500/4,000/5,000 K)	Bronze	3-1/4" x 3-1/4" x 9/16"	-	
ASD-JBS-3D6AC-BK-6PACK	3 inch	6W	120 V	TRIAC	420/442/456/445/430 lm	5CCT (2,700/3,000/3,500/4,000/5,000 K)	Black	3-1/4" x 3-1/4" x 9/16"	-	
ASD-JBS-4D12AC-WH-6PACK	4 inch	12W	120 V	TRIAC	750/767/736/784/750 lm	5CCT (2,700/3,000/3,500/4,000/5,000 K)	White	4-5/8" x 4-5/8" x 9/16"	-	
ASD-JBS-4D12AC-NK-6PACK	4 inch	12W	120 V	TRIAC	750/767/736/784/750 lm	5CCT (2,700/3,000/3,500/4,000/5,000 K)	Nickel	4-5/8" x 4-5/8" x 9/16"	-	
ASD-JBS-4D12AC-BZ-6PACK	4 inch	12W	120 V	TRIAC	750/767/736/784/750 lm	5CCT (2,700/3,000/3,500/4,000/5,000 K)	Bronze	4-5/8" x 4-5/8" x 9/16"	-	
ASD-JBS-4D12AC-BK-6PACK	4 inch	12W	120 V	TRIAC	750/767/736/784/750 lm	5CCT (2,700/3,000/3,500/4,000/5,000 K)	Black	4-5/8" x 4-5/8" x 9/16"	-	

For most up-to-date spec sheets please refer to asd-lighting.com



LED RECESSED MINI PANEL

Model	Size	Watts	Voltage	Dimmable	Lumens	CCT	Finish	Dimensions	Airtight
ASD-JBS-6D15AC-WH-6PACK	6 inch	15W	120 V	TRIAC	1,050/1,117/1,197/1,144/1,095 lm	5CCT (2,700/3,000/3,500/4,000/5,000 K)	White	6-9/16" x 6-9/16" x 9/16"	-
ASD-JBS-6D15AC-NK-6PACK	6 inch	15W	120 V	TRIAC	1,050/1,117/1,197/1,144/1,095 lm	5CCT (2,700/3,000/3,500/4,000/5,000 K)	Nickel	6-9/16" x 6-9/16" x 9/16"	-
ASD-JBS-6D15AC-BZ-6PACK	6 inch	15W	120 V	TRIAC	1,050/1,117/1,197/1,144/1,095 lm	5CCT (2,700/3,000/3,500/4,000/5,000 K)	Bronze	6-9/16" x 6-9/16" x 9/16"	-
ASD-JBS-6D15AC-BK-6PACK	6 inch	15W	120 V	TRIAC	1,050/1,117/1,197/1,144/1,095 lm	5CCT (2,700/3,000/3,500/4,000/5,000 K)	Black	6-9/16" x 6-9/16" x 9/16"	-
ASD-JBS-8D20AC-WH	8 inch	20W	120 V	TRIAC	1,550/1,694/1,743/1,721/1,654 lm	5CCT (2,700/3,000/3,500/4,000/5,000 K)	White	8-11/16" x 8-11/16" x 9/16"	-
ASD-JBS-8D20AC-BK	8 inch	20W	120 V	TRIAC	1,550/1,694/1,743/1,721/1,654 lm	5CCT (2,700/3,000/3,500/4,000/5,000 K)	Black	8-11/16" x 8-11/16" x 9/16"	-
ASD-JBS-12D24AC-WH	12 inch	24W	120 V	TRIAC	1,900/1,932/2,018/2,006/2,152 lm	5CCT (2,700/3,000/3,500/4,000/5,000 K)	White	11-9/16" x 11-9/16" x 9/16"	-
ASD-JBS-12D24AC-BK	12 inch	24W	120 V	TRIAC	1,900/1,932/2,018/2,006/2,152 lm	5CCT (2,700/3,000/3,500/4,000/5,000 K)	Black	11-9/16" x 11-9/16" x 9/16"	-
JBR-GB ROUND GIMBAL									
ASD-JBR-GB-3D6AC-WH-6PACK	3 inch	6W	120 V	TRIAC	435/449/463/461/443 lm	5CCT (2,700/3,000/3,500/4,000/5,000 K)	White	3-15/16" x 1"	-
ASD-JBR-GBA-3D6AC-WH-6PACK	3 inch	6W	120 V	TRIAC	435/449/463/461/443 lm	5CCT (2,700/3,000/3,500/4,000/5,000 K)	White	3-15/16" x 1-1/2"	Yes
ASD-JBR-GBA-3D6AC-BK-6PACK	3 inch	6W	120 V	TRIAC	435/449/463/461/443 lm	5CCT (2,700/3,000/3,500/4,000/5,000 K)	Black	3-15/16" x 1-1/2"	Yes
ASD-JBR-GB-4D12AC-WH-6PACK	4 inch	12W	120 V	TRIAC	777/803/842/793/795 lm	5CCT (2,700/3,000/3,500/4,000/5,000 K)	White	5-1/8" x 1"	-
ASD-JBR-GBA-4D12AC-WH-6PACK	4 inch	12W	120 V	TRIAC	777/803/842/793/795 lm	5CCT (2,700/3,000/3,500/4,000/5,000 K)	White	5-1/8" x 1-11/16"	Yes
ASD-JBR-GBA-4D12AC-BK-6PACK	4 inch	12W	120 V	TRIAC	777/803/842/793/795 lm	5CCT (2,700/3,000/3,500/4,000/5,000 K)	Black	5-1/8" x 1-11/16"	Yes
ASD-JBR-GB-6D15AC-WH-6PACK	6 inch	15W	120 V	TRIAC	1,085/1,156/1,232/1,208/1,184 lm	5CCT (2,700/3,000/3,500/4,000/5,000 K)	White	7-5/16" x 1-1/4"	-
ASD-JBR-GBA-6D15AC-WH-6PACK	6 inch	15W	120 V	TRIAC	1,085/1,156/1,232/1,208/1,184 lm	5CCT (2,700/3,000/3,500/4,000/5,000 K)	White	7-5/16" x 1-7/8"	Yes
ASD-JBR-GBA-6D15AC-BK-6PACK	6 inch	15W	120 V	TRIAC	1,085/1,156/1,232/1,208/1,184 lm	5CCT (2,700/3,000/3,500/4,000/5,000 K)	Black	7-5/16" x 1-7/8"	Yes

PRODUCT SPECIFICATIONS:

Construction & Materials			
Housing	Aluminum		
Lens	PC		
Finish	White, Nickel, Bronze, Black		
Weight	ASD-JBR-3D6AC-WH	0.5 lbs (0.2 kg)	ASD-JBS-3D6AC-WH-6PACK
	ASD-JBR-3D6AC-WH-6PACK	2.2 lbs (1 kg)	ASD-JBS-3D6AC-NK-6PACK
	ASD-JBR-3D6AC-NK-6PACK		ASD-JBS-3D6AC-BZ-6PACK
	ASD-JBR-3D6AC-BR	0.5 lbs (0.2 kg)	ASD-JBS-3D6AC-BK-6PACK
	ASD-JBR-3D6AC-BZ-6PACK	2.2 lbs (1 kg)	ASD-JBS-4D12AC-WH-6PACK
	ASD-JBR-3D6AC-BK	0.5 lbs (0.2 kg)	ASD-JBS-4D12AC-NK-6PACK
	ASD-JBR-3D6AC-BK-6PACK	2.2 lbs (1 kg)	ASD-JBS-4D12AC-BZ-6PACK
	ASD-JBR-4D12AC-WH-6PACK	3.7 lbs (1.7 kg)	ASD-JBS-4D12AC-BK-6PACK
	ASD-JBR-4D12AC-WH-12PACK	7.7 lbs (3.5 kg)	ASD-JBS-6D15AC-WH-6PACK
	ASD-JBR-4D12AC-NK-6PACK	3.7 lbs (1.7 kg)	ASD-JBS-6D15AC-NK-6PACK
	ASD-JBR-4D12AC-BR	0.7 lbs (0.3 kg)	ASD-JBS-6D15AC-BZ-6PACK
	ASD-JBR-4D12AC-BZ-6PACK	3.7 lbs (1.7 kg)	ASD-JBS-6D15AC-BK-6PACK
	ASD-JBR-4D12AC-BK-6PACK		ASD-JBS-8D20AC-WH
	ASD-JBR-6D15AC-WH	0.8 lbs (0.4 kg)	ASD-JBS-8D20AC-BK
	ASD-JBR-6D15AC-WH-6PACK	4.4 lbs (2 kg)	ASD-JBS-12D24AC-WH
	ASD-JBR-6D15AC-WH-12PACK	9.3 lbs (4.2 kg)	ASD-JBS-12D24AC-BK
	ASD-JBR-6D15AC-NK-6PACK	4.4 lbs (2 kg)	ASD-JBR-GB-3D6AC-WH-6PACK
	ASD-JBR-6D15AC-BZ-6PACK		ASD-JBR-GBA-3D6AC-WH-6PACK
	ASD-JBR-6D15AC-BK-6PACK		ASD-JBR-GBA-3D6AC-BK-6PACK
	ASD-JBR-8D20AC-WH	1.1 lbs (0.5 kg)	ASD-JBR-GB-4D12AC-WH-6PACK
ASD-JBR-8D20AC-BK	ASD-JBR-GBA-4D12AC-WH-6PACK		
ASD-JBR-12D24AC-WH	1.5 lbs (0.7 kg)	ASD-JBR-GBA-4D12AC-BK-6PACK	
ASD-JBR-12D24AC-WH		ASD-JBR-GB-6D15AC-WH-6PACK	
ASD-JBR-12D24AC-BK		ASD-JBR-GBA-6D15AC-WH-6PACK	
		ASD-JBR-GBA-6D15AC-BK-6PACK	
Environmental system			
Work environment	Suitable for Wet Locations		
Operating temperature	-4°F to 104°F (-20°C to 40°C)		
L-70 Life	> 54,000 hrs		

For most up-to-date spec sheets please refer to asd-lighting.com

ASD LIGHTING CORP

E-mail: orders@asd-lighting.com | Web site: www.asd-lighting.com



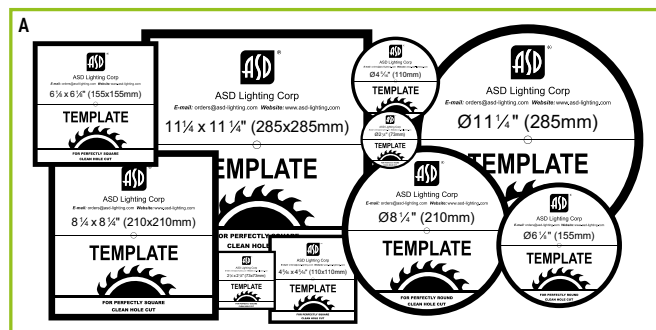


LED RECESSED MINI PANEL

Optical system					
Luminous flux	ASD-JBR-3D6AC-WH	420/445/460/455/436 lm	ASD-JBS-3D6AC-WH-6PACK	420/442/456/445/430 lm	
	ASD-JBR-3D6AC-WH-6PACK		ASD-JBS-3D6AC-NK-6PACK		
	ASD-JBR-3D6AC-NK-6PACK		ASD-JBS-3D6AC-BZ-6PACK		
	ASD-JBR-3D6AC-BR		ASD-JBS-3D6AC-BK-6PACK		
	ASD-JBR-3D6AC-BZ-6PACK		ASD-JBS-4D12AC-WH-6PACK		750/767/736/784/750 lm
	ASD-JBR-3D6AC-BK		ASD-JBS-4D12AC-NK-6PACK		
	ASD-JBR-3D6AC-BK-6PACK	ASD-JBS-4D12AC-BZ-6PACK			
	ASD-JBR-4D12AC-WH-6PACK	ASD-JBS-4D12AC-BK-6PACK			
	ASD-JBR-4D12AC-WH-12PACK	ASD-JBS-6D15AC-WH-6PACK	1,050/1,117/1,197/1,144/1,095 lm		
	ASD-JBR-4D12AC-NK-6PACK	ASD-JBS-6D15AC-NK-6PACK			
	ASD-JBR-4D12AC-BR	ASD-JBS-6D15AC-BZ-6PACK			
	ASD-JBR-4D12AC-BZ-6PACK	ASD-JBS-6D15AC-BK-6PACK			
	ASD-JBR-4D12AC-BK-6PACK	ASD-JBS-8D20AC-WH		1,550/1,694/1,743/1,721/1,654 lm	
	ASD-JBR-6D15AC-WH	ASD-JBS-8D20AC-BK			
	ASD-JBR-6D15AC-WH-6PACK	ASD-JBS-12D24AC-WH	1,900/1,932/2,018/2,006/2,152 lm		
	ASD-JBR-6D15AC-WH-12PACK	ASD-JBS-12D24AC-BK			
	ASD-JBR-6D15AC-NK-6PACK	ASD-JBR-GB-3D6AC-WH-6PACK			435/449/463/461/443 lm
	ASD-JBR-6D15AC-BZ-6PACK	ASD-JBR-GBA-3D6AC-WH-6PACK			
ASD-JBR-6D15AC-BK-6PACK	ASD-JBR-GBA-3D6AC-BK-6PACK				
ASD-JBR-8D20AC-WH	ASD-JBR-GB-4D12AC-WH-6PACK	777/803/842/793/795 lm			
ASD-JBR-8D20AC-BK	ASD-JBR-GBA-4D12AC-WH-6PACK				
ASD-JBR-12D24AC-WH	ASD-JBR-GBA-4D12AC-BK-6PACK				
ASD-JBR-12D24AC-BK	ASD-JBR-GB-6D15AC-WH-6PACK		1,085/1,156/1,232/1,208/1,184 lm		
	ASD-JBR-GBA-6D15AC-WH-6PACK				
	ASD-JBR-GBA-6D15AC-BK-6PACK				
Color temperature	5CCT switch (2,700/3,000/3,500/4,000/5,000 K), 3,000 K by default				
CRI	> 90				
Electrical system					
Input voltage	120 V				
Max input current	for 3 inch models: 0.07 A for 4 inch models: 0.14 A	for 6 inch models: 0.17 A for 8 inch models: 0.23 A	for 12 inch models: 0.27 A		
Inrush current (Action time)	for 3 inch models: 16 A (0.16 S) for 4 inch models: 23 A (0.16 S)	for 6 inch models: 29 A (0.18 S) for 8 inch models: 39 A (0.18 S)	for 12 inch models: 41 A (0.18 S)		
Off state power	0W				
Power consumption	for 3 inch models: 6W for 4 inch models: 12W	for 6 inch models: 15W for 8 inch models: 20W	for 12 inch models: 24W		
Power factor	> 0.9				
Output voltage	36 V				
Max output current	for 3 inch models: 0.146 A for 4 inch models: 0.293 A	for 6 inch models: 0.366 A for 8 inch models: 0.488 A	for 12 inch models: 0.586 A		
Surge protection DM/CM	2.5 kV / 2.5 kV				
Dimming range					
10-100%					
Dimming compatible controls					
Brand	Lutron	Leviton			
Models	CTCL-153PDH-WH	S-600PR-WH	DB33K1		
	DVW-603PGH-WH	CTCL-153P	1A2305		
	MIR-600THW-WH	DV-600P	1F4205		
	MACL-153M-WH	NT-1000	6633-P		
	CT-603PGH-WH	S-603P	VP106		
	DVLC-153P-WH	S-600P	IPL06		
	SLV-600P-WH	4X603	6683		
			6674		
		6672			
Regular and voluntary certifications					
5-year limited warranty					
Energy Star listed					
UL certified E473854					
Title 24 JA8-2022 compliant (only JBR models)					

PACKAGE CONTENTS:

Description	Q-ty
LED Recessed Mini Panel	1 (6 for 6 pack; 12 for 12 pack)
Template for 3, 4, 6, 8 or 12 inch (A)	1
Box	1



For most up-to-date spec sheets please refer to asd-lighting.com



LED RECESSED MINI PANEL

INSTALLATION GUIDE

IMPORTANT SAFETY INFORMATION:

Please read all the instructions below before installation.

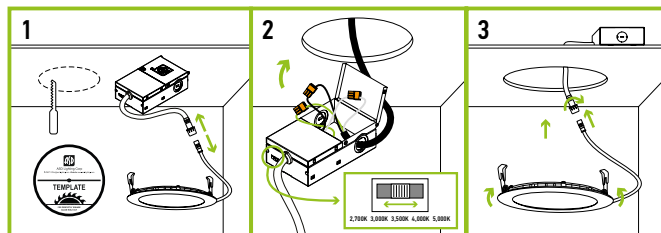
- ▶ Make sure that the supply voltage corresponds to the rated product voltage.
- ▶ The product must be installed by a qualified electrician in accordance with the National Electrical Code and corresponding local codes.
- ▶ If the product is damaged, do not use it.

⚠ WARNING

RISK OF PERSONAL INJURY – READ and follow all WARNINGS and installation instructions. Keep or give to the owner for future reference.
Risk of cuts: Wear gloves to prevent cuts or abrasions when removing from carton, handling, installing, and maintaining this product.
Risk of electric shock: This product must be installed in accordance with the applicable installation code by a person familiar with the construction and operation of the product and the hazards involved.
Risk of Fire: Minimum 194°F supply conductors. Consult a qualified electrician to ensure correct branch circuit conductor.
 ASD® assumes no responsibility for claims arising out of improper or careless Installation or handling of this product.

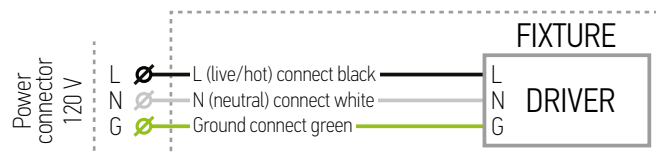
INSTALLATION STEPS:

1. Use template to cut an appropriate sized hole. Disconnect the fixture from the junction box.
2. Open junction box. Connect the wires: Black to Black, White to White, Green to Green. Secure the connection with quick connector. Choose needed color temperature by adjusting the switch. Close the junction box.
3. Insert the junction box into the cut hole, leaving the connection cable outside. Connect the fixture to the Junction box inserting the cable and securing it with a cap. Push the spring loaded clips upwards and insert the fixture base into the mounting hole. Release the clips, so the fixture fits securely.



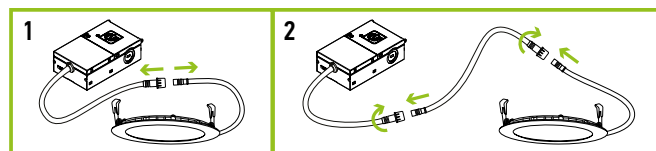
* The fixture is suitable for ceiling thickness less than 0.5 inch (0.7 inch. for JBR-GB and JBR-GBA).

ELECTRICAL SCHEMATIC DIAGRAM:



EXTENSION CORD INSTALLATION:

1. Disconnect the LED Mini Panel cable from the Junction box cable.
2. Connect one end of the Extension Cord to the LED Mini Panel cable, and the other end of the Extension Cord to the Junction box cable.

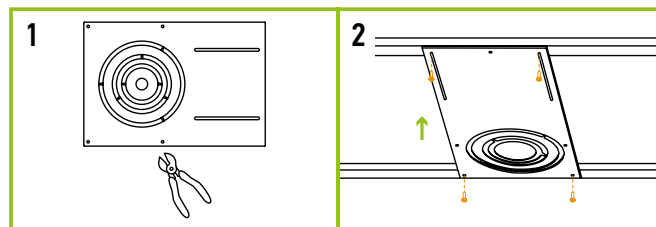


MOUNTING PLATE INSTALLATION

ASD-MPLR-346-FA	ASD-MPLR18-346-FA	ASD-MPLR-81012-FA
ASD-MPLS-346-FA	ASD-MPLS-81012-FA	ASD-MPLR-346-FS
ASD-MPLS-346-FS	ASD-MPLR-81012-FS	ASD-MPLS-81012-FS
ASD-MPLS-346-SC	ASD-MPLR-346-SC	ASD-MPLR-81012-SC

sold separately:

1. Remove the metal ring from the mounting plate according to the size of fixture.
2. Place the mounting plate and secure its position with screws on the beams.



ORDERING INFORMATION

Model	UPC	Pcs. per carton	Carton size	Carton weight	GTIN 14
JBR ROUND					
ASD-JBR-3D6AC-WH	810050739047	6	9.8" x 9.5" x 4.1"	4 lbs	10810050739044
ASD-JBR-3D6AC-WH-6PACK	810050737449	2	17.1" x 10" x 4.5"	6.2 lbs	10810050737446
ASD-JBR-3D6AC-NK-6PACK	810050738385	2	17.1" x 10" x 4.5"	6.2 lbs	20810050738389
ASD-JBR-3D6AC-BR	810128115070	6	9.8" x 9.5" x 4.1"	4 lbs	10810128115077
ASD-JBR-3D6AC-BZ-6PACK	819201022458	2	17.1" x 10" x 4.5"	6.2 lbs	20819201022452
ASD-JBR-3D6AC-BK	810050739054	6	9.8" x 9.5" x 4.1"	4 lbs	10810050739051
ASD-JBR-3D6AC-BK-6PACK	810050737456	2	17.1" x 10" x 4.5"	6.2 lbs	10810050737453
ASD-JBR-4D12AC-WH-6PACK	810050737197	2	12.6" x 12.6" x 6.3"	9.3 lbs	10810050737194
ASD-JBR-4D12AC-WH-12PACK	810050739719	1	12" x 11.6" x 5.3"	8.8 lbs	-
ASD-JBR-4D12AC-NK-6PACK	810050738392	2	12.6" x 12.6" x 6.3"	9.3 lbs	20810050738396
ASD-JBR-4D12AC-BR	810128115087	6	10.4" x 9.5" x 5.5"	4.9 lbs	10810128115084
ASD-JBR-4D12AC-BZ-6PACK	810050738903	2	12.6" x 12.6" x 6.3"	9.3 lbs	10810050738900
ASD-JBR-4D12AC-BK-6PACK	810050737210	2	12.6" x 12.6" x 6.3"	9.3 lbs	10810050737217

For most up-to-date spec sheets please refer to asd-lighting.com



LED RECESSED MINI PANEL

Model	UPC	Pcs. per carton	Carton size	Carton weight	GTIN 14
ASD-JBR-6D15AC-WH	810050739115	6	14.4" x 9.5" x 7.5"	6.4 lbs	10810050739112
ASD-JBR-6D15AC-WH-6PACK	810050737241	2	13" x 12.4" x 8"	11.1 lbs	10810050737248
ASD-JBR-6D15AC-WH-12PACK	810050739726	1	12.4" x 10.8" x 7.3"	10.4 lbs	-
ASD-JBR-6D15AC-NK-6PACK	810050738408	2	13" x 12.4" x 8"	11.1 lbs	20810050738402
ASD-JBR-6D15AC-BZ-6PACK	810050738910	2	13" x 12.4" x 8"	11.1 lbs	10810050738917
ASD-JBR-6D15AC-BK-6PACK	810050737265	2	13" x 12.4" x 8"	11.1 lbs	10810050737262
ASD-JBR-8D20AC-WH	810050737470	4	9.7" x 9.7" x 9.5"	6 lbs	10810050737477
ASD-JBR-8D20AC-BK	810050737487	4	9.7" x 9.7" x 9.5"	6 lbs	10810050737484
ASD-JBR-12D24AC-WH	810050737494	4	12.4" x 9.6" x 12.4"	7.9 lbs	10810050737491
ASD-JBR-12D24AC-BK	810050737500	4	12.4" x 9.6" x 12.4"	7.9 lbs	10810050737507
JBS SQUARE					
ASD-JBS-3D6AC-WH-6PACK	810050737524	2	17.1" x 10" x 4.5"	6.6 lbs	10810050737521
ASD-JBS-3D6AC-NK-6PACK	810050738415	2	17.1" x 10" x 4.5"	6.6 lbs	20810050738419
ASD-JBS-3D6AC-BZ-6PACK	819201022465	2	17.1" x 10" x 4.5"	6.6 lbs	20819201022469
ASD-JBS-3D6AC-BK-6PACK	810050737548	2	17.1" x 10" x 4.5"	6.6 lbs	10810050737545
ASD-JBS-4D12AC-WH-6PACK	810050737289	2	12.6" x 12.6" x 6.3"	9.3 lbs	10810050737286
ASD-JBS-4D12AC-NK-6PACK	810050738422	2	12.6" x 12.6" x 6.3"	9.3 lbs	20810050738426
ASD-JBS-4D12AC-BZ-6PACK	810050738927	2	12.6" x 12.6" x 6.3"	9.3 lbs	10810050738924
ASD-JBS-4D12AC-BK-6PACK	810050737302	2	12.6" x 12.6" x 6.3"	9.3 lbs	10810050737309
ASD-JBS-6D15AC-WH-6PACK	810050737326	2	14" x 12.4" x 8"	12.1 lbs	10810050737323
ASD-JBS-6D15AC-NK-6PACK	810050738439	2	14" x 12.4" x 8"	12.1 lbs	20810050738433
ASD-JBS-6D15AC-BZ-6PACK	810050738934	2	14" x 12.4" x 8"	12.1 lbs	10810050738931
ASD-JBS-6D15AC-BK-6PACK	810050737562	2	14" x 12.4" x 8"	12.1 lbs	10810050737569
ASD-JBS-8D20AC-WH	810050737579	4	10.4" x 9.7" x 9.5"	6.6 lbs	10810050737576
ASD-JBS-8D20AC-BK	810050737586	4	10.4" x 9.7" x 9.5"	6.6 lbs	10810050737583
ASD-JBS-12D24AC-WH	810050737593	4	13.4" x 9.7" x 12.3"	9.5 lbs	10810050737590
ASD-JBS-12D24AC-BK	810050737609	4	13.4" x 9.7" x 12.3"	9.5 lbs	10810050737606
JBR-GB ROUND GIMBAL					
ASD-JBR-GB-3D6AC-WH-6PACK	810050738613	2	17.1" x 9.8" x 5.3"	9.5 lbs	10810050738610
ASD-JBR-GBA-3D6AC-WH-6PACK	810128110587	2	17.9" x 11" x 5.5"	11 lbs	10810128110584
ASD-JBR-GBA-3D6AC-BK-6PACK	810050739382	2	17.9" x 11" x 5.5"	11 lbs	10810050739389
ASD-JBR-GB-4D12AC-WH-6PACK	810050738620	2	19.1" x 11.8" x 6.5"	10.6 lbs	10810050738627
ASD-JBR-GBA-4D12AC-WH-6PACK	810128110600	2	12.4" x 12.4" x 11.6"	16.5 lbs	10810128110607
ASD-JBR-GBA-4D12AC-BK-6PACK	810050739405	2	12.4" x 12.4" x 11.6"	16.5 lbs	10810050739402
ASD-JBR-GB-6D15AC-WH-6PACK	810050738637	2	16.7" x 12.6" x 8.9"	17.9 lbs	10810050738634
ASD-JBR-GBA-6D15AC-WH-6PACK	810128110624	2	18.9" x 16.5" x 8.9"	23.1 lbs	10810128110621
ASD-JBR-GBA-6D15AC-BK-6PACK	810050739429	2	18.9" x 16.5" x 8.9"	23.1 lbs	10810050739426

ACCESSORIES:

Model	Description	UPC	Pcs. per carton	Carton size	Carton weight	GTIN 14 in carton
ASD-MPLR-346-FA-6PACK	New construction flat mounting plate with asymmetric round holes 3-4-6"	810050739344	4	14.4" x 9.8" x 3.2"	22.5 lbs	10810050739341
ASD-MPLR18-346-FA-6PACK	New construction flat mounting plate 18" with asymmetric round holes 3-4-6"	810128112826	4	18.9" x 9.8" x 3.2"	32.9 lbs	10810128112823
ASD-MPLR-81012-FA-6PACK	New construction flat mounting plate with asymmetric round holes 8-10-12"	810128111553	4	19.5" x 14.2" x 3.2"	38.7 lbs	10810128111550
ASD-MPLS-346-FA-6PACK	New construction flat mounting plate with asymmetric square holes 3-4-6"	810128110303	4	14.4" x 9.8" x 3.2"	22.7 lbs	10810128110300
ASD-MPLS-81012-FA-6PACK	New construction flat mounting plate with asymmetric square holes 8-10-12"	810128112833	4	19.5" x 14.2" x 3.2"	32.9 lbs	10810128112830
ASD-MPLR-346-FS-6PACK	New construction flat mounting plate with symmetric round holes 3-4-6"	810050739351	4	27.2" x 9.1" x 3.2"	25.2 lbs	10810050739358
ASD-MPLR-81012-FS-6PACK	New construction flat mounting plate with symmetric round holes 8-10-12"	810128111577	4	27" x 13.8" x 3.2"	42.9 lbs	10810128111574
ASD-MPLS-346-FS-6PACK	New construction flat mounting plate with symmetric square holes 3-4-6"	810128110310	4	27" x 9.1" x 3.2"	26 lbs	10810128110317
ASD-MPLS-81012-FS-6PACK	New construction flat mounting plate with symmetric square holes 8-10-12"	810128112840	4	27" x 13.8" x 3.2"	39.1 lbs	10810128112847
ASD-MPLR-346-SC-6PACK	New construction mounting plate with round holes and sliding clips 3-4-6"	810050739337	2	17.3" x 11.9" x 13.4"	17 lbs	10810050739334
ASD-MPLR-81012-SC-6PACK	New construction mounting plate with round holes and sliding clips 8-10-12"	810128111607	2	21.3" x 17.5" x 15.6"	24.7 lbs	10810128111604
ASD-MPLS-346-SC-6PACK	New construction mounting plate with square holes and sliding clips 3-4-6"	810128110327	2	17.3" x 11.9" x 13.4"	16.5 lbs	10810128110324
ASD-EC-10A-6PACK	Extension cord 3pin 10'	810128110471	10	7.7" x 6.1" x 5.3"	1.8 lbs	10810128110478
ASD-EC-20A-6PACK	Extension cord 3pin 20'	810128110488	10	7.7" x 6.1" x 7.3"	3.1 lbs	10810128110485

For most up-to-date spec sheets please refer to asd-lighting.com