



LED VANITY LIGHT

LVF26M series

► **DESIGN** - LED VANITY LIGHT has a sleek, modern design that allows you to have a stylish look with efficient lighting. Durable housing resistant to rust and impact provides many years of service. The acrylic lens grants you even light distribution. It is designed to operate on 120V circuits.

► **COLOR SELECTABLE** - You can choose either a 2,700K soft white, 3,000K warm white, 4,000K cool white, 5,000K daylight or 6,000K daylight white color temperature.

► **DIMMING** - Smooth triac dimming capabilities ranging from 10% to 100% with modern LED dimmers allow you to control the look and feel of your space.

► **APPLICATION** - This fixture creates a bright light that is perfect for bathroom spaces or any other common areas. It can be installed vertically or horizontally with sconces up or down. It is also Damp Locations rated.

► **ADVANTAGES** - With a lifespan of 50,000 hours, these fixtures are made to last decades under normal operation! ASD provides a 5-year limited warranty along with ETL certification to guarantee top quality products and safety!

Catalog number	
Notes	
Type	



Finish: Chrome Black

Model	Number of lights	Watts	Voltage	Dimmable	Lumens	CCT	Finish	Dimensions (LxWxH)
ASD-LVF26M-2D12CH	2 light	12W	120 V	TRIAC	932/961/996/1,023/1,043 lm	5CCT (2,700/3,000/4,000/5,000/6,000 K)	Chrome	13-3/16" x 3-3/4" x 4-5/16"
ASD-LVF26M-2D12BK	2 light	12W	120 V	TRIAC	932/961/996/1,023/1,043 lm	5CCT (2,700/3,000/4,000/5,000/6,000 K)	Black	13-3/16" x 3-3/4" x 4-5/16"
ASD-LVF26M-3D15CH	3 light	15W	120 V	TRIAC	1,099/1,131/1,172/1,204/1,229 lm	5CCT (2,700/3,000/4,000/5,000/6,000 K)	Chrome	19-11/16" x 3-3/4" x 4-5/16"
ASD-LVF26M-3D15BK	3 light	15W	120 V	TRIAC	1,099/1,131/1,172/1,204/1,229 lm	5CCT (2,700/3,000/4,000/5,000/6,000 K)	Black	19-11/16" x 3-3/4" x 4-5/16"
ASD-LVF26M-4D23CH	4 light	23W	120 V	TRIAC	1,896/1,950/2,016/2,066/2,102 lm	5CCT (2,700/3,000/4,000/5,000/6,000 K)	Chrome	26-3/16" x 3-3/4" x 4-5/16"
ASD-LVF26M-4D23BK	4 light	23W	120 V	TRIAC	1,896/1,950/2,016/2,066/2,102 lm	5CCT (2,700/3,000/4,000/5,000/6,000 K)	Black	26-3/16" x 3-3/4" x 4-5/16"
ASD-LVF26M-5D28CH	5 light	28W	120 V	TRIAC	2,248/2,313/2,399/2,468/2,517 lm	5CCT (2,700/3,000/4,000/5,000/6,000 K)	Chrome	32-7/8" x 3-3/4" x 4-5/16"
ASD-LVF26M-5D28BK	5 light	28W	120 V	TRIAC	2,248/2,313/2,399/2,468/2,517 lm	5CCT (2,700/3,000/4,000/5,000/6,000 K)	Black	32-7/8" x 3-3/4" x 4-5/16"

ORDERING INFORMATION

Model	UPC	Pcs. per carton	Carton size	Carton weight	GTIN 14
ASD-LVF26M-2D12CH	810128113014	4	15.8" x 12.2" x 14"	17 lbs	10810128113011
ASD-LVF26M-2D12BK	810128113007	4	15.8" x 12.2" x 14"	17 lbs	10810128113004
ASD-LVF26M-3D15CH	810128112697	4	22.4" x 12.2" x 14"	25 lbs	10810128112694
ASD-LVF26M-3D15BK	810128112680	4	22.4" x 12.2" x 14"	25 lbs	10810128112687
ASD-LVF26M-4D23CH	810128112710	2	28.9" x 12.2" x 7.1"	18 lbs	10810128112717
ASD-LVF26M-4D23BK	810128112703	2	28.9" x 12.2" x 7.1"	18 lbs	10810128112700
ASD-LVF26M-5D28CH	810128112734	2	35.6" x 12.2" x 7.1"	21 lbs	10810128112731
ASD-LVF26M-5D28BK	810128112727	2	35.6" x 12.2" x 7.1"	21 lbs	10810128112724

For most up-to-date spec sheets please refer to asd-lighting.com

ASD LIGHTING CORP

E-mail: orders@asd-lighting.com | Web site: www.asd-lighting.com





LED VANITY LIGHT

LVF26M series

PRODUCT SPECIFICATIONS:

Construction & Materials				
Housing	Steel			
Lens	Acrylic			
Finish	Chrome, Black			
Weight	ASD-LVF26M-2D12CH	3.4 lbs (1.5 kg)	ASD-LVF26M-4D23CH	6.4 lbs (2.9 kg)
	ASD-LVF26M-2D12BK		ASD-LVF26M-4D23BK	
	ASD-LVF26M-3D15CH	4.6 lbs (2.1 kg)	ASD-LVF26M-5D28CH	8.4 lbs (3.8 kg)
	ASD-LVF26M-3D15BK		ASD-LVF26M-5D28BK	
Environmental system				
Work environment	Suitable for Damp Locations			
Operating temperature	-4°F to 113°F (-20°C to 45°C)			
L-70 life	> 50,000 hrs			
Optical system				
Luminous flux	ASD-LVF26M-2D12CH	932/961/996/1,023/1,043 lm	ASD-LVF26M-4D23CH	1,896/1,950/2,016/2,066/2,102 lm
	ASD-LVF26M-2D12BK		ASD-LVF26M-4D23BK	
	ASD-LVF26M-3D15CH	1,099/1,131/1,172/1,204/1,229 lm	ASD-LVF26M-5D28CH	2,248/2,313/2,399/2,468/2,517 lm
	ASD-LVF26M-3D15BK		ASD-LVF26M-5D28BK	
Color temperature	5CCT switch (2,700/3,000/4,000/5,000/6,000 K), 3,000 K by default			
CRI	> 80			
Electrical system				
Input voltage	120 V			
Max input current	ASD-LVF26M-2D12CH	0.11 A	ASD-LVF26M-4D23CH	0.21 A
	ASD-LVF26M-2D12BK		ASD-LVF26M-4D23BK	
	ASD-LVF26M-3D15CH	0.14 A	ASD-LVF26M-5D28CH	0.26 A
	ASD-LVF26M-3D15BK		ASD-LVF26M-5D28BK	
Inrush current (Action time)	ASD-LVF26M-2D12CH	0.1 A (0.1 S)	ASD-LVF26M-4D23CH	0.19 A (0.1 S)
	ASD-LVF26M-2D12BK		ASD-LVF26M-4D23BK	
	ASD-LVF26M-3D15CH	0.13 A (0.1 S)	ASD-LVF26M-5D28CH	0.23 A (0.1 S)
	ASD-LVF26M-3D15BK		ASD-LVF26M-5D28BK	
Off state power	0W			
Power consumption	ASD-LVF26M-2D12CH	12W	ASD-LVF26M-4D23CH	23W
	ASD-LVF26M-2D12BK		ASD-LVF26M-4D23BK	
	ASD-LVF26M-3D15CH	15W	ASD-LVF26M-5D28CH	28W
	ASD-LVF26M-3D15BK		ASD-LVF26M-5D28BK	
Power factor	> 0.9			
Output voltage	36 V			
Max output current	ASD-LVF26M-2D12CH	0.3 A	ASD-LVF26M-4D23CH	0.6 A
	ASD-LVF26M-2D12BK		ASD-LVF26M-4D23BK	
	ASD-LVF26M-3D15CH	0.35 A	ASD-LVF26M-5D28CH	0.7 A
	ASD-LVF26M-3D15BK		ASD-LVF26M-5D28BK	
Surge protection DM/CM	1.25 kV / 1.25 kV			

Dimming range

10-100%

Dimming compatible controls

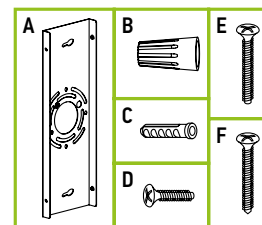
Brand	Lutron	Leviton
Models	MACL-153MLH-WH	R02-DW6HD-2RW
	STCL-153PH-WH	R00-RNL06-0TW
	PD-6WCL-WH-R	R68-06674-P0T
	DVCL-153PR	DSL06
	P-PKG1W	

Regular and voluntary certifications

5-year limited warranty | cETLus certified 4001256

PACKAGE CONTENTS:

Description	Q-ty
LED Vanity Light	1
Mounting plate (A)	1
Wire nut (B)	3
Anchor (C)	2
Fixture screw (D)	4
Mounting screw (E)	2
Self-tapping screw (F)	2
Box	1



For most up-to-date spec sheets please refer to asd-lighting.com



LED VANITY LIGHT

LVF26M series

INSTALLATION GUIDE

IMPORTANT SAFETY INFORMATION:

Please read all the instructions below before installation.

- ▶ Make sure that the supply voltage corresponds to the rated product voltage.
- ▶ The product must be installed by a qualified electrician in accordance with the National Electrical Code and corresponding local codes.
- ▶ If the product is damaged, do not use it.

⚠ WARNING

RISK OF PERSONAL INJURY – READ and follow all WARNINGS and installation instructions. Keep or give to the owner for future reference.

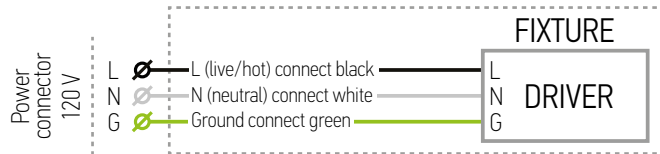
Risk of cuts: Wear gloves to prevent cuts or abrasions when removing from carton, handling, installing, and maintaining this product.

Risk of electric shock: This product must be installed in accordance with the applicable installation code by a person familiar with the construction and operation of the product and the hazards involved.

Risk of Fire: Minimum 194°F supply conductors. Consult a qualified electrician to ensure correct branch circuit conductor.

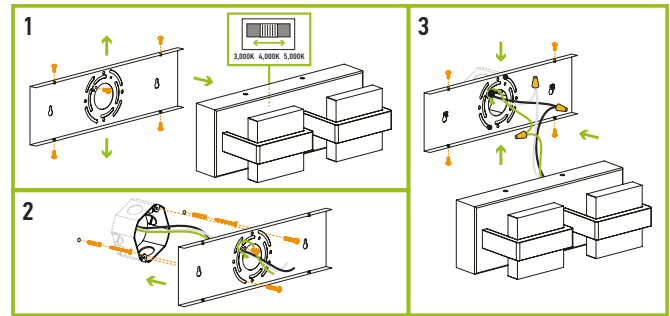
ASD® assumes no responsibility for claims arising out of improper or careless installation or handling of this product.

ELECTRICAL SCHEMATIC DIAGRAM:



INSTALLATION STEPS:

1. The LVF24 can be installed either right side up or upside down. Unscrew the four fixture screws from both sides of the fixture and remove the mounting plate. Choose preferred color temperature on the back side of the fixture by adjusting switch position.
2. Place the mounting plate against the wall covering the outlet box, mark placement of the narrow end of mounting keyhole slots. Remove the mounting plate and drill two appropriate sized holes for anchors, insert anchors into the holes, twist two self-tapping screws into the anchors. Attach the mounting plate to the wall with two mounting screws and tighten self-tapping screws.
3. Connect the wires: Black to Black, White to White, Ground to Ground. Secure the connection with wire nuts. Attach the fixture body to the mounting plate using four fixture screws.



For most up-to-date spec sheets please refer to asd-lighting.com