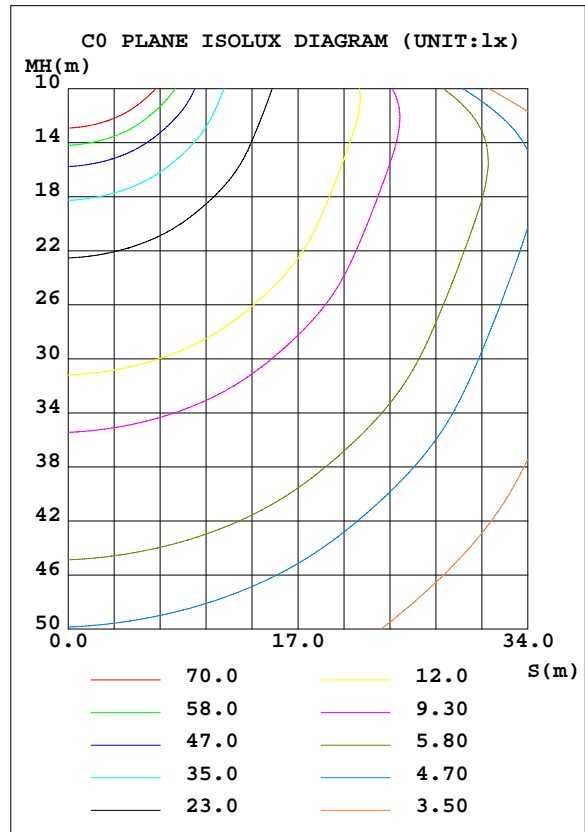
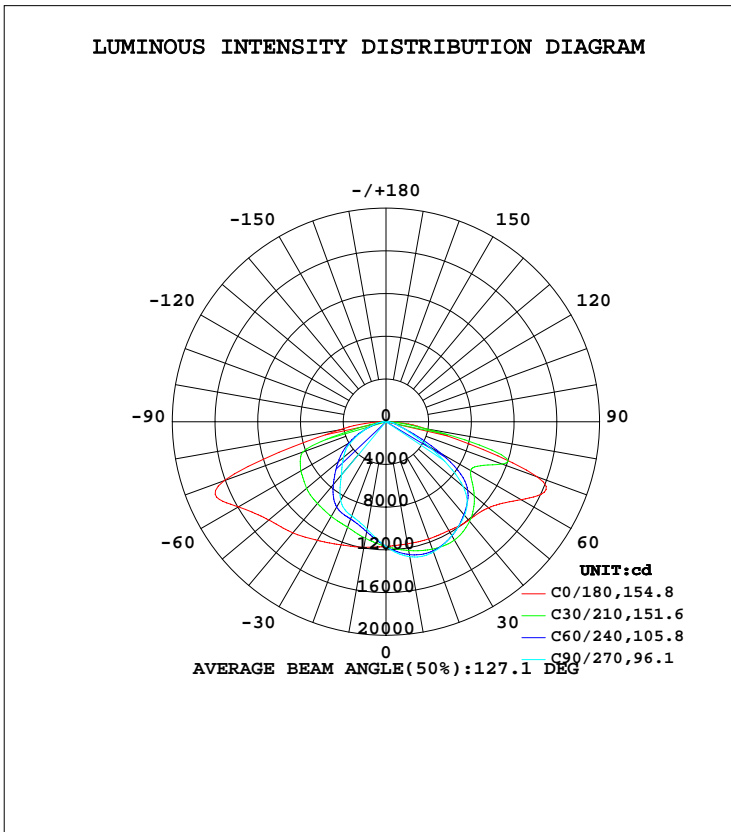


LUMINAIRE PHOTOMETRIC TEST REPORT

Test:U:120.00V I:2.6834A P:321.43W PF:0.9982 Freq:60.00Hz Lamp Flux:45276.8x1 lm		
NAME: LED AREA LIGHT	TYPE: LED	WEIGHT:
SPEC.:	DIM.:	SERIAL No.:
MFR.: ASD Lighting Corp	SUR.:	Shielding Angle:

DATA OF LAMP		PHOTOMETRIC DATA Eff: 140.86 lm/W			
MODEL	ASD-LSB2-300DAC-BR	I _{max} (cd)	17379	S/MH(C0/180)	1.75
NOMINAL POWER(W)	300	LOR(%)	100.0	S/MH(C90/270)	1.10
RATED VOLTAGE(V)	120-277	TOTAL FLUX(lm)	45277	η UP, DN(C0-180)	0.0,56.3
NOMINAL FLUX(lm)	45276.8	CIE CLASS	DIRECT	η UP, DN(C180-360)	0.0,43.7
LAMPS INSIDE	1	η up(%)	0.0	CIBSE SHR NOM	1.50
TEST VOLTAGE(V)	120	η down(%)	100.0	CIBSE SHR MAX	1.55



C Range: 0 - 360DEG
 C Interval: 15.0DEG
 Test Speed: HIGH
 Temperature: 25.1DEG
 Operators: Alan Wang
 Test Date: 20 August 2022

γ Range: 0 - 180DEG
 γ Interval: 1.0DEG
 Test System: EVERFINE GO-R5000_V2 SYSTEM V2.00.416
 Humidity: 45.3%
 Test Distance: 2.500m [K=1.0449]
 Remarks:

ZONAL FLUX DIAGRAM

ZONAL FLUX DIAGRAM:

γ	C0	C45	C90	C135	C180	C225	C270	C315	γ	Φ zone	Φ total	%lum,lamp
10	1161	1246	1283	1278	1193	1072	1022	1059	0- 10	1113	1113	2.46,2.46
20	1168	1284	1298	1348	1227	998.1	938.9	978.4	10- 20	3288	4401	9.72,9.72
30	1177	1256	1232	1340	1282	967.9	849.1	925.7	20- 30	5293	9693	21.4,21.4
40	1205	1156	1143	1238	1358	906.8	652.0	859.7	30- 40	6868	16561	36.6,36.6
50	1254	1023	942.7	1090	1432	741.0	520.2	709.2	40- 50	7800	24361	53.8,53.8
60	1460	854.0	457.3	932.6	1594	501.1	374.9	489.5	50- 60	7897	32258	71.2,71.2
70	1505	302.3	164.9	450.0	1611	255.4	198.1	247.0	60- 70	7365	39623	87.5,87.5
80	379.7	72.32	62.70	97.95	438.9	80.36	75.87	76.86	70- 80	4675	44298	97.8,97.8
90	0	0	0	0	0	0	0	0	80- 90	978.7	45277	100,100
100	0	0	0	0	0	0	0	0	90-100	0	45277	100,100
110	0	0	0	0	0	0	0	0	100-110	0	45277	100,100
120	0	0	0	0	0	0	0	0	110-120	0	45277	100,100
130	0	0	0	0	0	0	0	0	120-130	0	45277	100,100
140	0	0	0	0	0	0	0	0	130-140	0	45277	100,100
150	0	0	0	0	0	0	0	0	140-150	0	45277	100,100
160	0	0	0	0	0	0	0	0	150-160	0	45277	100,100
170	0	0	0	0	0	0	0	0	160-170	0	45277	100,100
180	0	0	0	0	0	0	0	0	170-180	0	45277	100,100
DEG	LUMINOUS INTENSITY:×10cd									UNIT:lm		

Conical surface Flux(90deg): 20387 lm

%lum = 45.0%

%lamp = 45.0%

Conical surface Flux(120deg): 32258 lm

%lum = 71.2%

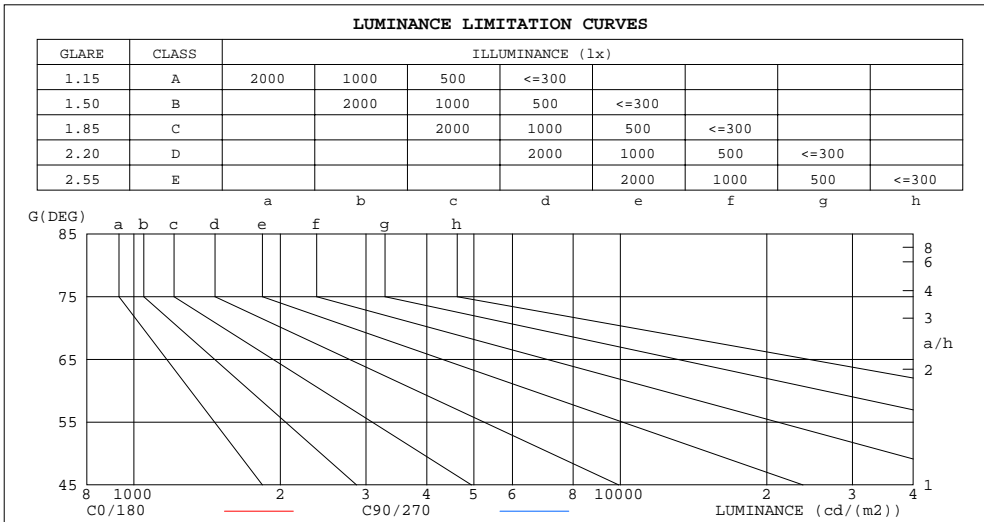
%lamp = 71.2%

C Range: 0 - 360DEG
 C Interval: 15.0DEG
 Test Speed: HIGH
 Temperature: 25.1DEG
 Operators: Alan Wang
 Test Date: 20 August 2022

γ Range: 0 - 180DEG
 γ Interval: 1.0DEG
 Test System: EVERFINE GO-R5000_V2 SYSTEM V2.00.416
 Humidity: 45.3%
 Test Distance: 2.500m [K=1.0449]
 Remarks:

LUMINANCE LIMITATION CURVES

Test:U:120.00V I:2.6834A P:321.43W PF:0.9982 Freq:60.00Hz Lamp Flux:45276.8x1 lm		
NAME: LED AREA LIGHT	TYPE: LED	WEIGHT:
SPEC.:	DIM.:	SERIAL No.:
MFR.: ASD Lighting Corp	SUR.:	Shielding Angle:



LUMINANCE cd/(m2)		
G (DEG)	C0/180	C90/270
85	221857	39766
80	260338	42982
75	373329	47613
70	523748	57395
65	451966	73817
60	347678	108883
55	276462	148745
50	232251	174602
45	204812	181123

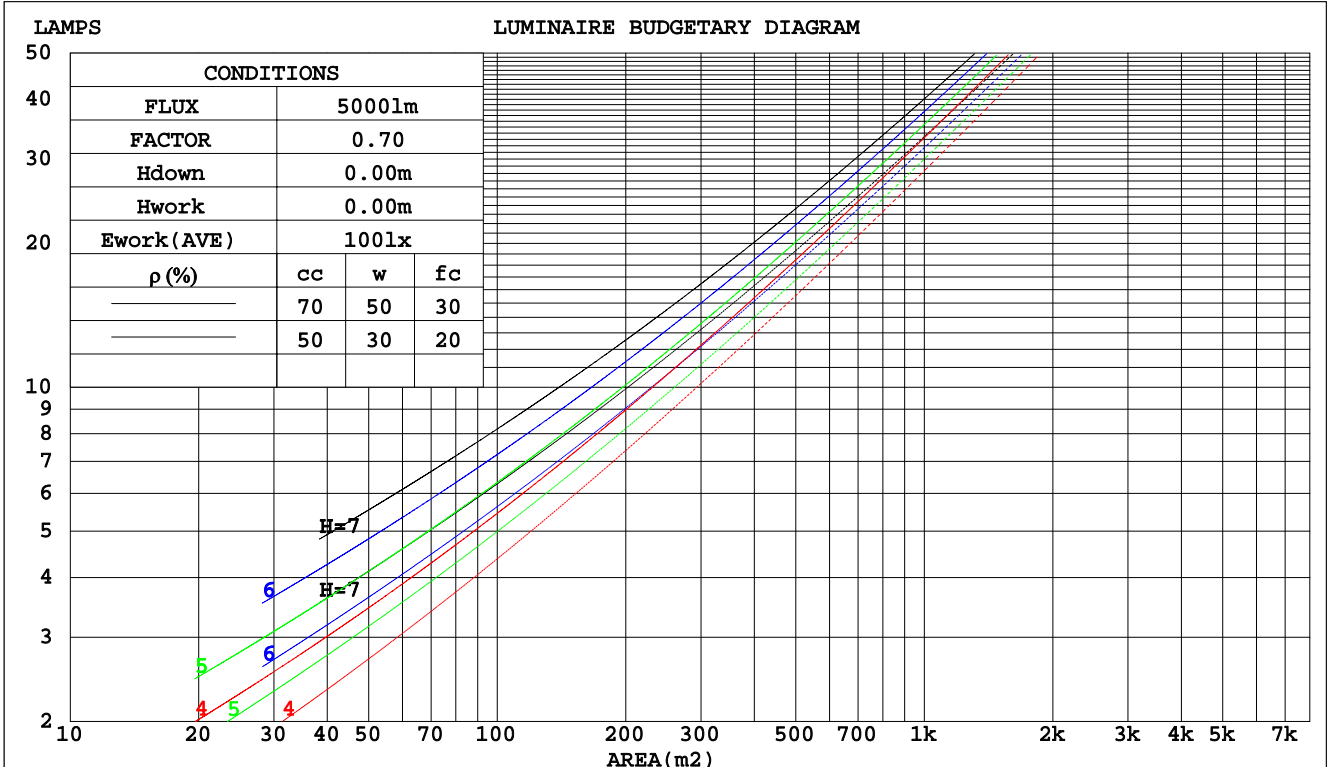
C Range: 0 - 360DEG
 C Interval: 15.0DEG
 Test Speed: HIGH
 Temperature: 25.1DEG
 Operators: Alan Wang
 Test Date: 20 August 2022

γ Range: 0 - 180DEG
 γ Interval: 1.0DEG
 Test System: EVERFINE GO-R5000_V2 SYSTEM V2.00.416
 Humidity: 45.3%
 Test Distance: 2.500m [K=1.0449]
 Remarks:

CU AND LUMINAIRE BUDGETARY ESTIMATE DIAGRAM

Test:U:120.00V I:2.6834A P:321.43W PF:0.9982 Freq:60.00Hz Lamp Flux:45276.8x1 lm		
NAME: LED AREA LIGHT	TYPE: LED	WEIGHT:
SPEC.:	DIM.:	SERIAL No.:
MFR.: ASD Lighting Corp	SUR.:	Shielding Angle:

pcc	80%			70%			50%			30%			10%			0
pw	50%	30%	10%	50%	30%	10%	50%	30%	10%	50%	30%	10%	50%	30%	10%	0
pfc	20%			20%			20%			20%			20%			0
RCR	RCR:Room Cavity Ratio						Coefficients of Utilization(CU)									
0.0	1.19	1.19	1.19	1.16	1.16	1.16	1.11	1.11	1.11	1.06	1.06	1.06	1.02	1.02	1.02	1.00
1.0	1.02	.97	.93	.90	.95	.92	.96	.92	.89	.92	.89	.86	.88	.86	.83	.81
2.0	.87	.80	.73	.85	.78	.73	.82	.76	.71	.78	.74	.69	.75	.71	.68	.65
3.0	.76	.67	.59	.74	.66	.59	.71	.64	.58	.68	.62	.57	.65	.60	.56	.53
4.0	.66	.57	.49	.65	.56	.49	.62	.54	.48	.60	.53	.47	.57	.52	.47	.44
5.0	.59	.49	.42	.57	.48	.41	.55	.47	.41	.53	.46	.40	.51	.45	.40	.38
6.0	.52	.43	.36	.51	.42	.36	.49	.41	.35	.48	.40	.35	.46	.40	.35	.32
7.0	.47	.38	.31	.46	.37	.31	.45	.37	.31	.43	.36	.31	.42	.35	.30	.28
8.0	.43	.34	.28	.42	.33	.27	.41	.33	.27	.39	.32	.27	.38	.32	.27	.25
9.0	.39	.30	.25	.38	.30	.24	.37	.30	.24	.36	.29	.24	.35	.29	.24	.22
10.0	.36	.28	.22	.35	.27	.22	.34	.27	.22	.33	.27	.22	.32	.26	.22	.20



C Range: 0 - 360DEG
 C Interval: 15.0DEG
 Test Speed: HIGH
 Temperature: 25.1DEG
 Operators: Alan Wang
 Test Date: 20 August 2022

γ Range: 0 - 180DEG
 γ Interval: 1.0DEG
 Test System: EVERFINE GO-R5000_V2 SYSTEM V2.00.416
 Humidity: 45.3%
 Test Distance: 2.500m [K=1.0449]
 Remarks:

WEC AND CCEC

Test:U:120.00V I:2.6834A P:321.43W PF:0.9982 Freq:60.00Hz Lamp Flux:45276.8x1 lm		
NAME: LED AREA LIGHT	TYPE: LED	WEIGHT:
SPEC.:	DIM.:	SERIAL No.:
MFR.: ASD Lighting Corp	SUR.:	Shielding Angle:

ρcc	80%			70%			50%			30%			10%			0
ρw	50%	30%	10%	50%	30%	10%	50%	30%	10%	50%	30%	10%	50%	30%	10%	0
ρfc	20%			20%			20%			20%			20%			0
RCR	RCR:Room Cavity Ratio						Wall Exitance Coefficients(WEC)									
0.0																
1.0	.343	.195	.062	.336	.192	.061	.323	.185	.059	.310	.179	.057	.299	.173	.056	
2.0	.321	.176	.054	.315	.173	.053	.303	.168	.052	.292	.164	.051	.281	.159	.050	
3.0	.294	.157	.047	.289	.155	.047	.278	.151	.046	.268	.147	.045	.259	.143	.044	
4.0	.269	.140	.041	.264	.138	.041	.255	.135	.040	.246	.132	.040	.238	.129	.039	
5.0	.247	.126	.036	.242	.124	.036	.234	.122	.036	.226	.119	.035	.219	.117	.035	
6.0	.227	.114	.033	.223	.113	.032	.216	.111	.032	.209	.108	.032	.202	.106	.032	
7.0	.210	.104	.029	.207	.103	.029	.200	.101	.029	.194	.099	.029	.188	.098	.029	
8.0	.195	.095	.027	.192	.095	.027	.186	.093	.027	.181	.091	.026	.175	.090	.026	
9.0	.182	.088	.025	.179	.087	.025	.174	.086	.024	.169	.085	.024	.164	.083	.024	
10.0	.171	.082	.023	.168	.081	.023	.163	.080	.023	.159	.079	.022	.154	.078	.022	

ρcc	80%			70%			50%			30%			10%			0
ρw	50%	30%	10%	50%	30%	10%	50%	30%	10%	50%	30%	10%	50%	30%	10%	0
ρfc	20%			20%			20%			20%			20%			0
RCR	RCR:Room Cavity Ratio						Ceiling Cavity Exitance Coefficients(CCEC)									
0.0	.190	.190	.190	.163	.163	.163	.111	.111	.111	.064	.064	.064	.020	.020	.020	
1.0	.183	.156	.132	.156	.134	.113	.107	.092	.078	.062	.053	.046	.020	.017	.015	
2.0	.176	.132	.094	.151	.113	.082	.103	.078	.057	.060	.046	.033	.019	.015	.011	
3.0	.169	.114	.071	.145	.099	.061	.100	.069	.043	.058	.040	.025	.018	.013	.008	
4.0	.162	.101	.055	.139	.088	.048	.095	.061	.034	.055	.036	.020	.018	.012	.007	
5.0	.154	.091	.045	.132	.079	.039	.091	.055	.027	.053	.032	.016	.017	.011	.005	
6.0	.147	.083	.037	.126	.072	.032	.087	.050	.023	.051	.030	.014	.016	.010	.004	
7.0	.140	.076	.032	.120	.066	.028	.083	.046	.020	.048	.027	.012	.016	.009	.004	
8.0	.133	.070	.027	.114	.061	.024	.079	.043	.017	.046	.025	.010	.015	.008	.003	
9.0	.127	.065	.024	.109	.057	.021	.076	.040	.015	.044	.024	.009	.014	.008	.003	
10.0	.121	.061	.022	.104	.053	.019	.072	.037	.013	.042	.022	.008	.014	.007	.003	

C Range: 0 - 360DEG
 C Interval: 15.0DEG
 Test Speed: HIGH
 Temperature: 25.1DEG
 Operators: Alan Wang
 Test Date: 20 August 2022

γ Range: 0 - 180DEG
 γ Interval: 1.0DEG
 Test System: EVERFINE GO-R5000_V2 SYSTEM V2.00.416
 Humidity: 45.3%
 Test Distance: 2.500m [K=1.0449]
 Remarks:

UGR(Unified Glare Rating) Table

Test:U:120.00V I:2.6834A P:321.43W PF:0.9982 Freq:60.00Hz Lamp Flux:45276.8x1 lm										
NAME: LED AREA LIGHT					TYPE: LED			WEIGHT:		
SPEC.:					DIM.:			SERIAL No.:		
MFR.: ASD Lighting Corp					SUR.:			Shielding Angle:		
ceiling/cavity	0.7	0.7	0.5	0.5	0.3	0.7	0.7	0.5	0.5	0.3
walls	0.5	0.3	0.5	0.3	0.3	0.5	0.3	0.5	0.3	0.3
working plane	0.2	0.2	0.2	0.2	0.2	0.2	0.2	0.2	0.2	0.2
Room dimensions	Viewed crosswise					Viewed endwise				
x = 2H y = 2H	33.1	34.8	33.4	35.1	35.4	28.8	30.5	29.1	30.8	31.2
3H	37.8	39.4	38.2	39.8	40.1	29.2	30.8	29.5	31.1	31.4
4H	39.0	40.5	39.4	40.9	41.2	29.3	30.8	29.7	31.1	31.5
6H	39.5	40.9	39.9	41.2	41.6	29.4	30.8	29.8	31.2	31.6
8H	39.6	41.0	40.0	41.4	41.8	29.4	30.8	29.9	31.2	31.6
12H	39.7	41.0	40.2	41.4	41.8	29.5	30.8	29.9	31.1	31.6
4H 2H	33.3	34.8	33.7	35.2	35.5	30.4	31.9	30.8	32.2	32.6
3H	38.6	39.8	39.0	40.2	40.6	30.7	32.0	31.1	32.4	32.8
4H	40.1	41.2	40.5	41.6	42.1	30.8	32.0	31.3	32.4	32.8
6H	40.7	41.7	41.2	42.2	42.6	31.0	32.0	31.4	32.4	32.9
8H	40.9	41.9	41.4	42.3	42.8	31.0	32.0	31.5	32.4	32.9
12H	41.1	42.0	41.6	42.5	42.9	31.1	31.9	31.5	32.4	32.9
8H 4H	40.1	41.0	40.5	41.5	41.9	33.2	34.1	33.6	34.6	35.0
6H	40.8	41.6	41.3	42.1	42.6	33.3	34.1	33.7	34.5	35.0
8H	41.2	41.9	41.7	42.4	42.9	33.3	34.0	33.8	34.5	35.0
12H	41.5	42.1	42.0	42.6	43.2	33.3	34.0	33.8	34.5	35.0
12H 4H	40.1	40.9	40.5	41.4	41.9	33.7	34.5	34.1	35.0	35.5
6H	40.8	41.5	41.3	42.0	42.5	33.7	34.5	34.3	34.9	35.5
8H	41.2	41.8	41.7	42.3	42.8	33.8	34.4	34.3	34.9	35.5
CIE190: 2010										

CIE190: 2010
Area: 0.084 m2

C Range: 0 - 360DEG
C Interval: 15.0DEG
Test Speed: HIGH
Temperature: 25.1DEG
Operators: Alan Wang
Test Date: 20 August 2022

γ Range: 0 - 180DEG
γ Interval: 1.0DEG
Test System: EVERFINE GO-R5000_V2 SYSTEM V2.00.416
Humidity: 45.3%
Test Distance: 2.500m [K=1.0449]
Remarks:

UTILIZATION FACTORS TABLE

Test:U:120.00V I:2.6834A P:321.43W PF:0.9982 Freq:60.00Hz Lamp Flux:45276.8x1 lm		
NAME: LED AREA LIGHT	TYPE: LED	WEIGHT:
SPEC.:	DIM.:	SERIAL No.:
MFR.: ASD Lighting Corp	SUR.:	Shielding Angle:

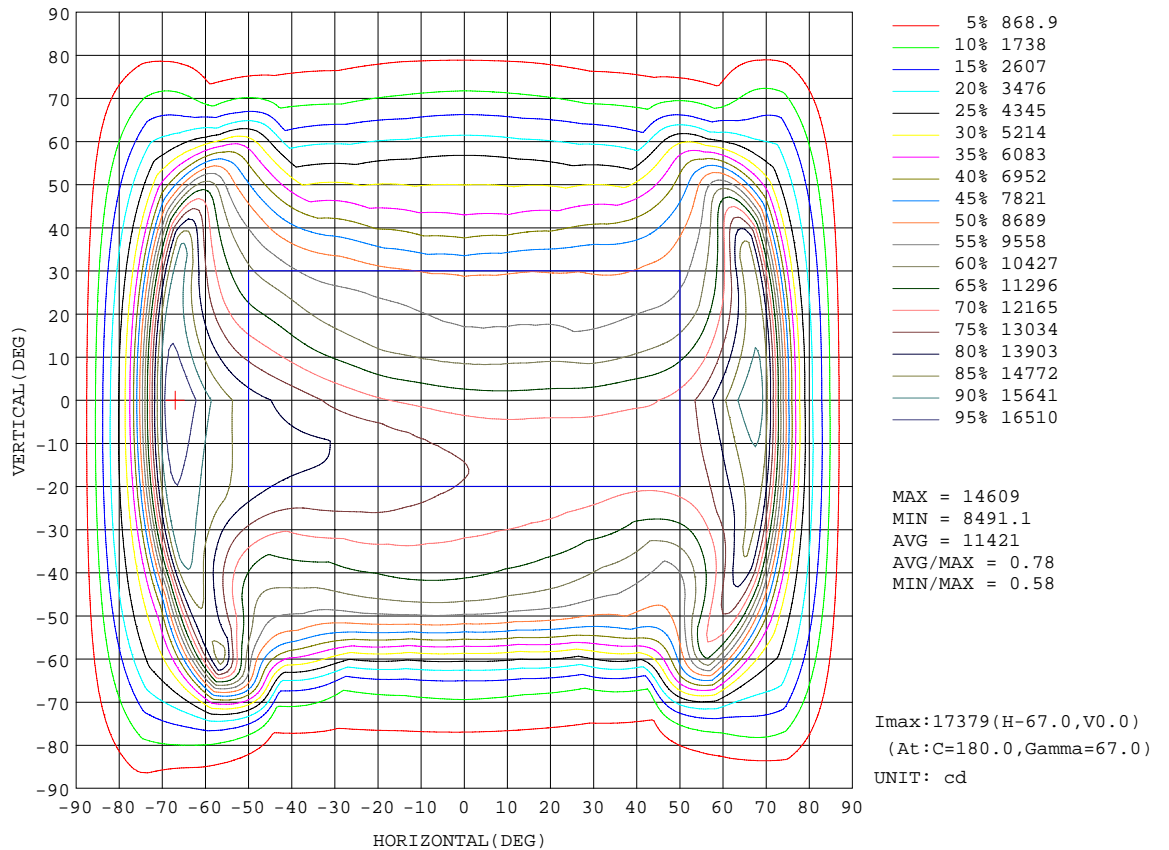
REFLECTANCE										
Ceiling	0.8	0.8	0.8	0.7	0.7	0.7	0.5	0.5	0.5	0
Walls	0.7	0.5	0.3	0.7	0.5	0.3	0.7	0.5	0.3	0
Working plane	0.2	0.2	0.2	0.2	0.2	0.2	0.2	0.2	0.2	0
ROOM INDEX	UTILIZATION FACTORS(PERCENT) $k(RI) \times RCR = 5$									
k = 0.60	53	41	33	52	41	33	51	40	33	26
0.80	63	50	42	62	50	42	60	49	42	34
1.00	71	59	51	70	59	51	68	60	50	43
1.25	79	67	59	77	66	59	74	65	58	50
1.50	84	73	65	82	72	65	79	70	64	56
2.00	92	82	75	90	81	74	86	79	73	64
2.50	96	88	81	94	86	80	90	83	78	69
3.00	100	92	86	98	91	85	94	88	83	74
4.00	105	98	93	102	96	92	98	93	89	80
5.00	107	102	98	105	100	96	100	96	93	83
ROOM INDEX	UF(total)									Direct
According to DIN EN 13032-2 2004			Suspended				SHRNOM = 1.25			

C Range: 0 - 360DEG
 C Interval: 15.0DEG
 Test Speed: HIGH
 Temperature: 25.1DEG
 Operators: Alan Wang
 Test Date: 20 August 2022

γ Range: 0 - 180DEG
 γ Interval: 1.0DEG
 Test System: EVERFINE GO-R5000_V2 SYSTEM V2.00.416
 Humidity: 45.3%
 Test Distance: 2.500m [K=1.0449]
 Remarks:

ISOCANDELA DIAGRAM

Test:U:120.00V I:2.6834A P:321.43W PF:0.9982 Freq:60.00Hz Lamp Flux:45276.8x1 lm		
NAME: LED AREA LIGHT	TYPE: LED	WEIGHT:
SPEC.:	DIM.:	SERIAL No.:
MFR.: ASD Lighting Corp	SUR.:	Shielding Angle:



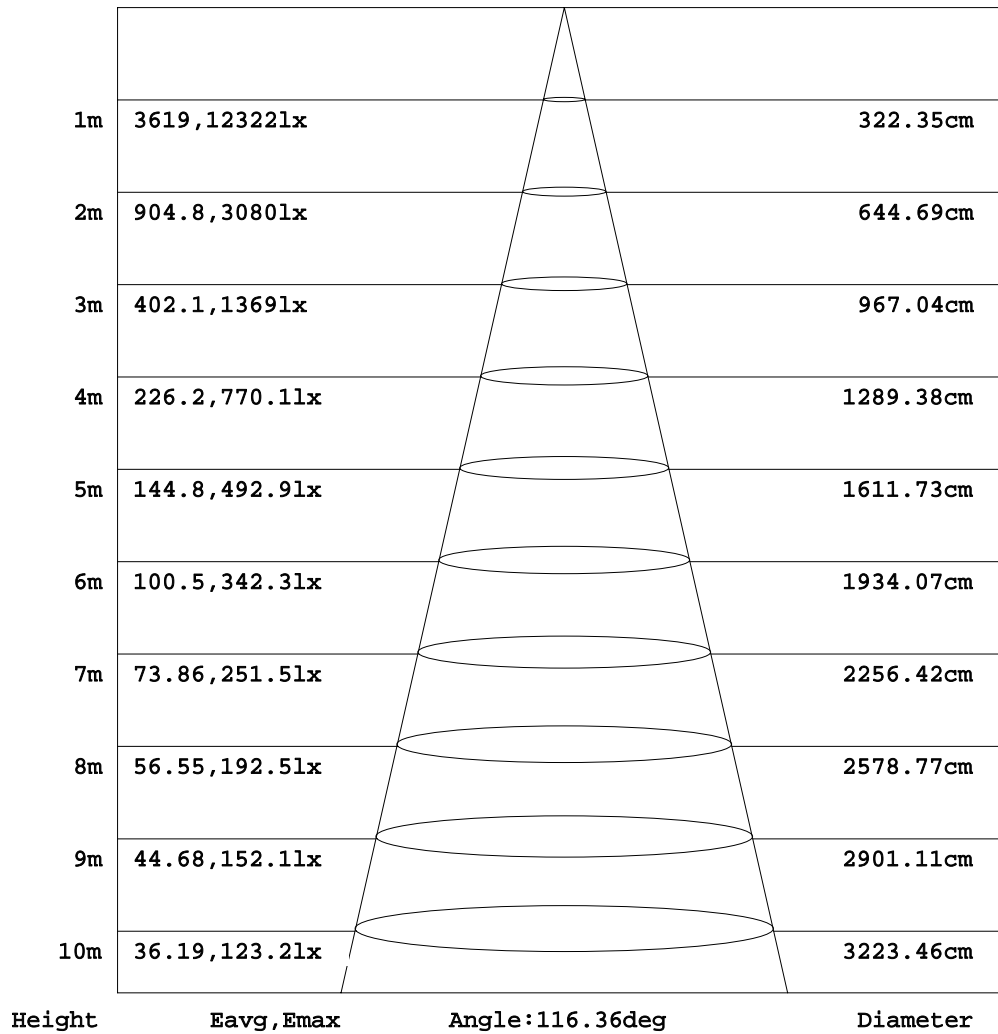
C Range: 0 - 360DEG
 C Interval: 15.0DEG
 Test Speed: HIGH
 Temperature: 25.1DEG
 Operators: Alan Wang
 Test Date: 20 August 2022

γ Range: 0 - 180DEG
 γ Interval: 1.0DEG
 Test System: EVERFINE GO-R5000_V2 SYSTEM V2.00.416
 Humidity: 45.3%
 Test Distance: 2.500m [K=1.0449]
 Remarks:

AAI Figure

Test:U:120.00V I:2.6834A P:321.43W PF:0.9982 Freq:60.00Hz Lamp Flux:45276.8x1 lm		
NAME: LED AREA LIGHT	TYPE: LED	WEIGHT:
SPEC.:	DIM.:	SERIAL No.:
MFR.: ASD Lighting Corp	SUR.:	Shielding Angle:

Flux out:31492 lm



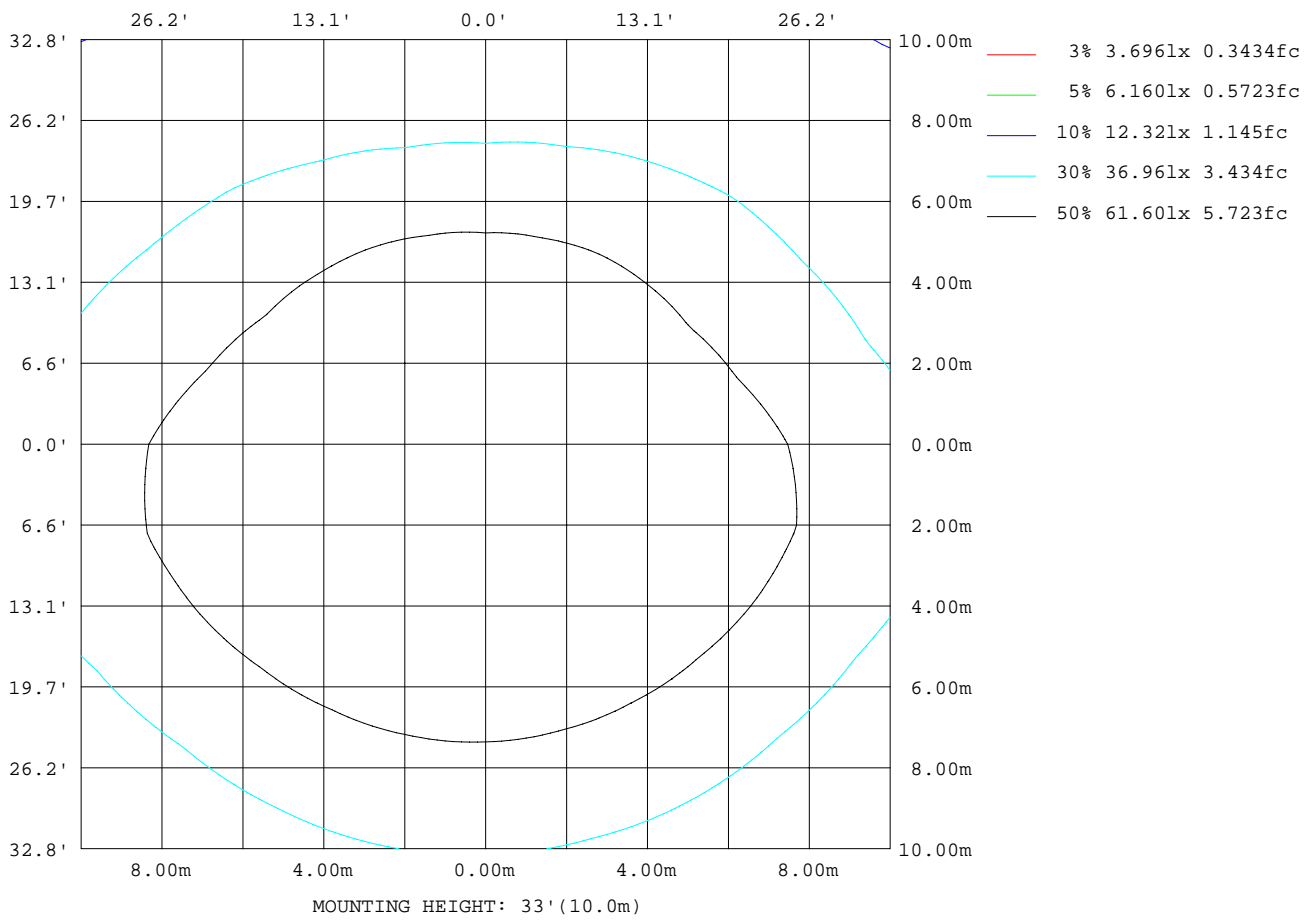
Note:The Curves indicate the illuminated area and the average illumination when the luminaire is at different distance.

C Range: 0 - 360DEG
 C Interval: 15.0DEG
 Test Speed: HIGH
 Temperature: 25.1DEG
 Operators:Alan Wang
 Test Date:20 August 2022

γ Range: 0 - 180DEG
 γ Interval: 1.0DEG
 Test System:EVERFINE GO-R5000_V2 SYSTEM V2.00.416
 Humidity: 45.3%
 Test Distance:2.500m [K=1.0449]
 Remarks:

ISOLUX DIAGRAM

Test:U:120.00V I:2.6834A P:321.43W PF:0.9982 Freq:60.00Hz Lamp Flux:45276.8x1 lm		
NAME: LED AREA LIGHT	TYPE: LED	WEIGHT:
SPEC.:	DIM.:	SERIAL No.:
MFR.: ASD Lighting Corp	SUR.:	Shielding Angle:



C Range: 0 - 360DEG
 C Interval: 15.0DEG
 Test Speed: HIGH
 Temperature: 25.1DEG
 Operators: Alan Wang
 Test Date: 20 August 2022

γ Range: 0 - 180DEG
 γ Interval: 1.0DEG
 Test System: EVERFINE GO-R5000_V2 SYSTEM V2.00.416
 Humidity: 45.3%
 Test Distance: 2.500m [K=1.0449]
 Remarks:

LED Avg.L Report

Test:U:120.00V I:2.6834A P:321.43W PF:0.9982 Freq:60.00Hz Lamp Flux:45276.8x1 lm		
NAME: LED AREA LIGHT	TYPE: LED	WEIGHT:
SPEC.:	DIM.:	SERIAL No.:
MFR.: ASD Lighting Corp	SUR.:	Shielding Angle:

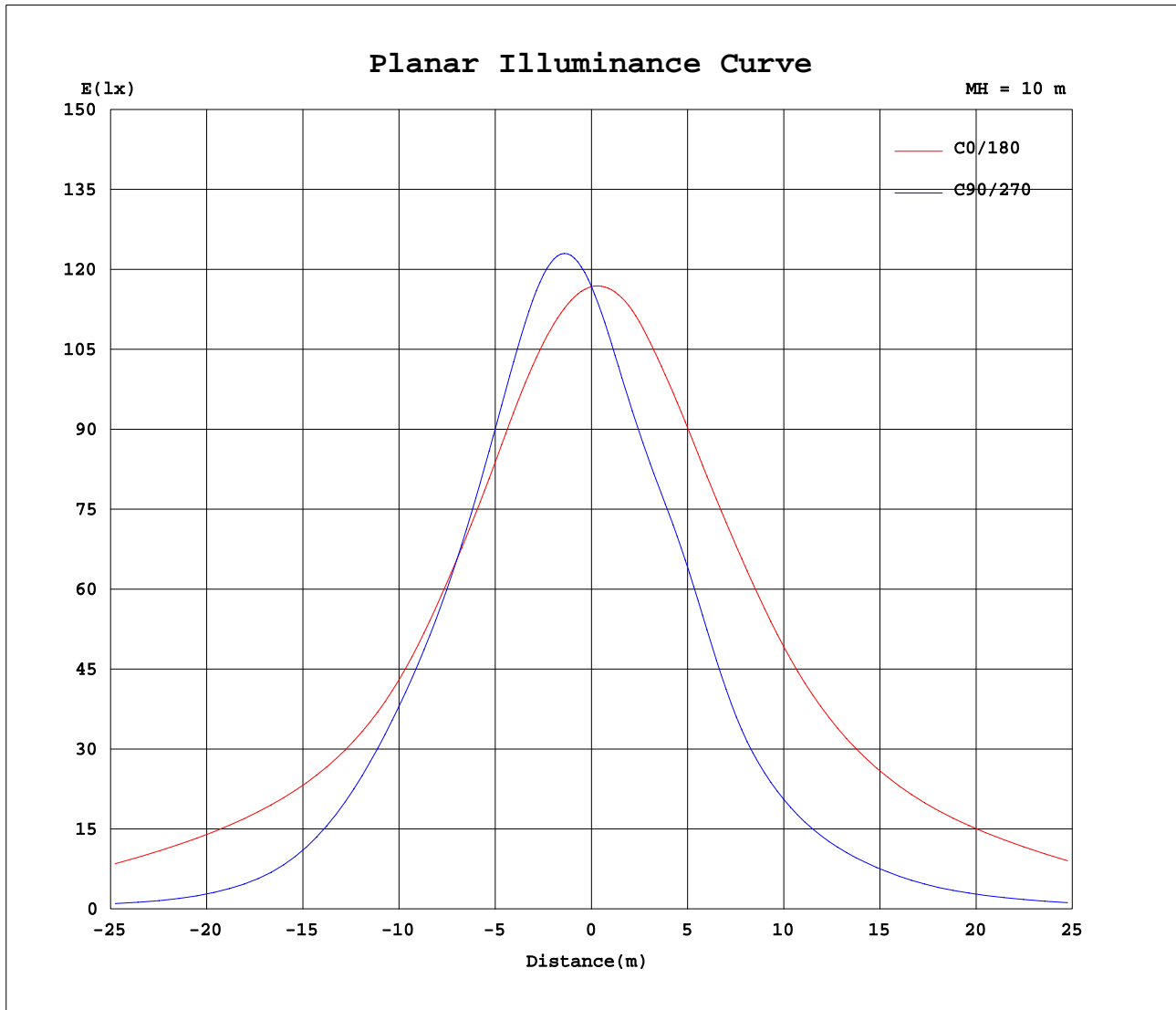
AvgL	cd/m2
L_0~180(65)av	468526
L_0~180(75)av	393443
L_0~180(85)av	247012
L_90~270(65)av	76911
L_90~270(75)av	54446
L_90~270(85)av	36880
L_45(65)av	151046
L_45(75)av	74420
L_45(85)av	44066

Standard: GB/T 29293-2012

C Range: 0 - 360DEG
C Interval: 15.0DEG
Test Speed: HIGH
Temperature: 25.1DEG
Operators: Alan Wang
Test Date: 20 August 2022

γ Range: 0 - 180DEG
 γ Interval: 1.0DEG
Test System: EVERFINE GO-R5000_V2 SYSTEM V2.00.416
Humidity: 45.3%
Test Distance: 2.500m [K=1.0449]
Remarks:

Planar Illuminance Curve



C Range: 0 - 360DEG
 C Interval: 15.0DEG
 Test Speed: HIGH
 Temperature: 25.1DEG
 Operators: Alan Wang
 Test Date: 20 August 2022

γ Range: 0 - 180DEG
 γ Interval: 1.0DEG
 Test System: EVERFINE GO-R5000_V2 SYSTEM V2.00.416
 Humidity: 45.3%
 Test Distance: 2.500m [K=1.0449]
 Remarks:

LUMINOUS DISTRIBUTION INTENSITY DATA

Test:U:120.00V I:2.6834A P:321.43W PF:0.9982 Freq:60.00Hz Lamp Flux:45276.8x1 lm		
NAME: LED AREA LIGHT	TYPE: LED	WEIGHT:
SPEC.:	DIM.:	SERIAL No.:
MFR.: ASD Lighting Corp	SUR.:	Shielding Angle:

Table--1

UNIT: x10cd

C(DEG) γ (DEG)	0	15	30	45	60	75	90	105	120	135	150	165	180	195	210	225	240	255	270
0	1168	1168	1168	1168	1168	1168	1168	1168	1168	1168	1168	1168	1168	1168	1168	1168	1168	1168	1168
5	1162	1180	1197	1211	1222	1230	1235	1236	1233	1225	1213	1197	1178	1158	1138	1120	1106	1097	1093
10	1161	1195	1224	1246	1263	1275	1283	1287	1286	1278	1260	1232	1193	1151	1109	1072	1046	1029	1022
15	1164	1213	1249	1272	1286	1296	1305	1313	1321	1321	1305	1268	1209	1141	1078	1030	998	979	971
20	1168	1232	1270	1284	1287	1289	1298	1313	1333	1348	1343	1304	1227	1135	1052	998	970	950	939
25	1170	1250	1282	1279	1268	1263	1270	1290	1321	1356	1370	1341	1253	1137	1036	980	953	926	910
30	1177	1267	1280	1256	1234	1226	1232	1252	1289	1340	1379	1376	1282	1138	1024	968	923	872	849
35	1192	1282	1257	1213	1189	1183	1191	1209	1242	1298	1369	1405	1319	1140	1011	947	859	776	750
40	1205	1284	1217	1156	1136	1131	1143	1160	1184	1238	1335	1423	1358	1148	999	907	767	678	652
45	1217	1277	1158	1092	1076	1064	1076	1097	1119	1166	1281	1436	1392	1161	988	838	672	600	582
50	1254	1268	1079	1023	999	953	943	981	1040	1090	1209	1454	1432	1167	970	741	584	529	520
55	1332	1261	985	952	855	745	717	765	899	1018	1132	1468	1497	1178	944	624	499	463	460
60	1460	1283	916	854	599	477	457	488	647	933	1082	1484	1594	1232	920	501	404	375	375
65	1604	1341	976	629	328	271	262	274	354	758	1140	1542	1722	1369	886	384	303	279	284
70	1505	1489	1159	302	164	157	165	161	174	450	1341	1607	1611	1593	829	255	200	192	198
75	812	998	1027	133	101	102	104	104	110	211	1462	955	899	943	421	153	118	132	133
80	380	491	388	72.3	63.3	62.5	62.7	64.2	70.2	98.0	583	507	439	426	120	80.4	71.7	74.5	75.9
85	162	264	120	30.9	27.6	28.6	29.1	29.6	31.4	39.8	170	274	199	156	42.0	30.2	26.4	28.4	24.9
90	0.00	0.00	0.00	0.00	0.00	0.00	0.00	0.00	0.00	0.00	0.00	0.00	0.00	0.00	0.00	0.00	0.00	0.00	0.00
95	0.00	0.00	0.00	0.00	0.00	0.00	0.00	0.00	0.00	0.00	0.00	0.00	0.00	0.00	0.00	0.00	0.00	0.00	0.00
100	0.00	0.00	0.00	0.00	0.00	0.00	0.00	0.00	0.00	0.00	0.00	0.00	0.00	0.00	0.00	0.00	0.00	0.00	0.00
105	0.00	0.00	0.00	0.00	0.00	0.00	0.00	0.00	0.00	0.00	0.00	0.00	0.00	0.00	0.00	0.00	0.00	0.00	0.00
110	0.00	0.00	0.00	0.00	0.00	0.00	0.00	0.00	0.00	0.00	0.00	0.00	0.00	0.00	0.00	0.00	0.00	0.00	0.00
115	0.00	0.00	0.00	0.00	0.00	0.00	0.00	0.00	0.00	0.00	0.00	0.00	0.00	0.00	0.00	0.00	0.00	0.00	0.00
120	0.00	0.00	0.00	0.00	0.00	0.00	0.00	0.00	0.00	0.00	0.00	0.00	0.00	0.00	0.00	0.00	0.00	0.00	0.00
125	0.00	0.00	0.00	0.00	0.00	0.00	0.00	0.00	0.00	0.00	0.00	0.00	0.00	0.00	0.00	0.00	0.00	0.00	0.00
130	0.00	0.00	0.00	0.00	0.00	0.00	0.00	0.00	0.00	0.00	0.00	0.00	0.00	0.00	0.00	0.00	0.00	0.00	0.00
135	0.00	0.00	0.00	0.00	0.00	0.00	0.00	0.00	0.00	0.00	0.00	0.00	0.00	0.00	0.00	0.00	0.00	0.00	0.00
140	0.00	0.00	0.00	0.00	0.00	0.00	0.00	0.00	0.00	0.00	0.00	0.00	0.00	0.00	0.00	0.00	0.00	0.00	0.00
145	0.00	0.00	0.00	0.00	0.00	0.00	0.00	0.00	0.00	0.00	0.00	0.00	0.00	0.00	0.00	0.00	0.00	0.00	0.00
150	0.00	0.00	0.00	0.00	0.00	0.00	0.00	0.00	0.00	0.00	0.00	0.00	0.00	0.00	0.00	0.00	0.00	0.00	0.00
155	0.00	0.00	0.00	0.00	0.00	0.00	0.00	0.00	0.00	0.00	0.00	0.00	0.00	0.00	0.00	0.00	0.00	0.00	0.00
160	0.00	0.00	0.00	0.00	0.00	0.00	0.00	0.00	0.00	0.00	0.00	0.00	0.00	0.00	0.00	0.00	0.00	0.00	0.00
165	0.00	0.00	0.00	0.00	0.00	0.00	0.00	0.00	0.00	0.00	0.00	0.00	0.00	0.00	0.00	0.00	0.00	0.00	0.00
170	0.00	0.00	0.00	0.00	0.00	0.00	0.00	0.00	0.00	0.00	0.00	0.00	0.00	0.00	0.00	0.00	0.00	0.00	0.00
175	0.00	0.00	0.00	0.00	0.00	0.00	0.00	0.00	0.00	0.00	0.00	0.00	0.00	0.00	0.00	0.00	0.00	0.00	0.00
180	0.00	0.00	0.00	0.00	0.00	0.00	0.00	0.00	0.00	0.00	0.00	0.00	0.00	0.00	0.00	0.00	0.00	0.00	0.00

C Range: 0 - 360DEG
 C Interval: 15.0DEG
 Test Speed: HIGH
 Temperature: 25.1DEG
 Operators: Alan Wang
 Test Date: 20 August 2022

γ Range: 0 - 180DEG
 γ Interval: 1.0DEG
 Test System: EVERFINE GO-R5000_V2 SYSTEM V2.00.416
 Humidity: 45.3%
 Test Distance: 2.500m [K=1.0449]
 Remarks:

LUMINOUS DISTRIBUTION INTENSITY DATA

Test:U:120.00V I:2.6834A P:321.43W PF:0.9982 Freq:60.00Hz Lamp Flux:45276.8x1 lm		
NAME: LED AREA LIGHT	TYPE: LED	WEIGHT:
SPEC.:	DIM.:	SERIAL No.:
MFR.: ASD Lighting Corp	SUR.:	Shielding Angle:

Table--2

UNIT: x10cd

C(DEG) γ (DEG)	285	300	315	330	345														
0	1168	1168	1168	1168	1168														
5	1094	1100	1111	1126	1143														
10	1024	1037	1059	1088	1123														
15	973	987	1014	1054	1106														
20	940	952	978	1023	1089														
25	913	929	950	989	1067														
30	866	903	926	953	1042														
35	782	849	899	927	1025														
40	678	761	860	911	1014														
45	594	662	797	895	1006														
50	527	575	709	872	998														
55	463	491	606	841	1016														
60	376	400	490	821	1091														
65	281	305	373	811	1258														
70	194	202	247	768	1522														
75	133	118	149	365	885														
80	72.2	69.5	76.9	113	401														
85	20.6	24.1	28.0	39.0	173														
90	0.00	0.00	0.00	0.00	0.00														
95	0.00	0.00	0.00	0.00	0.00														
100	0.00	0.00	0.00	0.00	0.00														
105	0.00	0.00	0.00	0.00	0.00														
110	0.00	0.00	0.00	0.00	0.00														
115	0.00	0.00	0.00	0.00	0.00														
120	0.00	0.00	0.00	0.00	0.00														
125	0.00	0.00	0.00	0.00	0.00														
130	0.00	0.00	0.00	0.00	0.00														
135	0.00	0.00	0.00	0.00	0.00														
140	0.00	0.00	0.00	0.00	0.00														
145	0.00	0.00	0.00	0.00	0.00														
150	0.00	0.00	0.00	0.00	0.00														
155	0.00	0.00	0.00	0.00	0.00														
160	0.00	0.00	0.00	0.00	0.00														
165	0.00	0.00	0.00	0.00	0.00														
170	0.00	0.00	0.00	0.00	0.00														
175	0.00	0.00	0.00	0.00	0.00														
180	0.00	0.00	0.00	0.00	0.00														

C Range: 0 - 360DEG
 C Interval: 15.0DEG
 Test Speed: HIGH
 Temperature: 25.1DEG
 Operators: Alan Wang
 Test Date: 20 August 2022

γ Range: 0 - 180DEG
 γ Interval: 1.0DEG
 Test System: EVERFINE GO-R5000_V2 SYSTEM V2.00.416
 Humidity: 45.3%
 Test Distance: 2.500m [K=1.0449]
 Remarks: