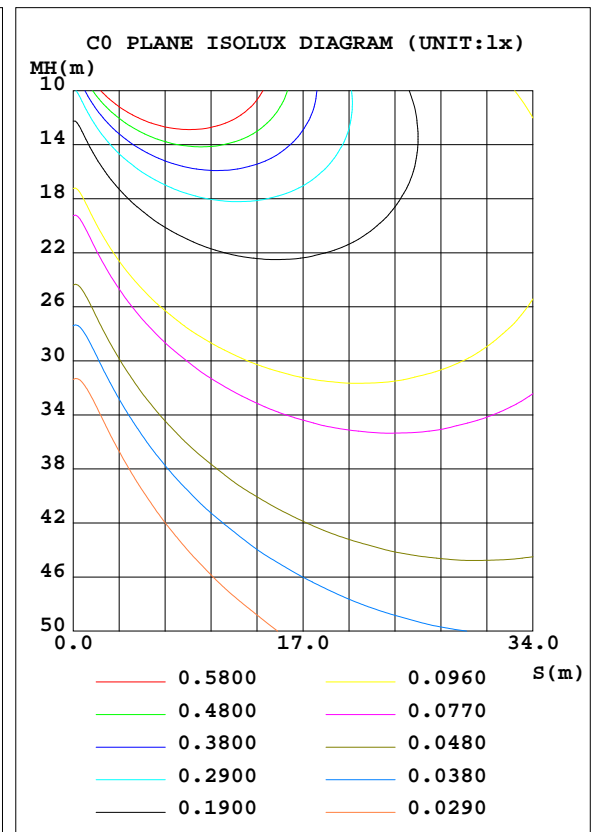
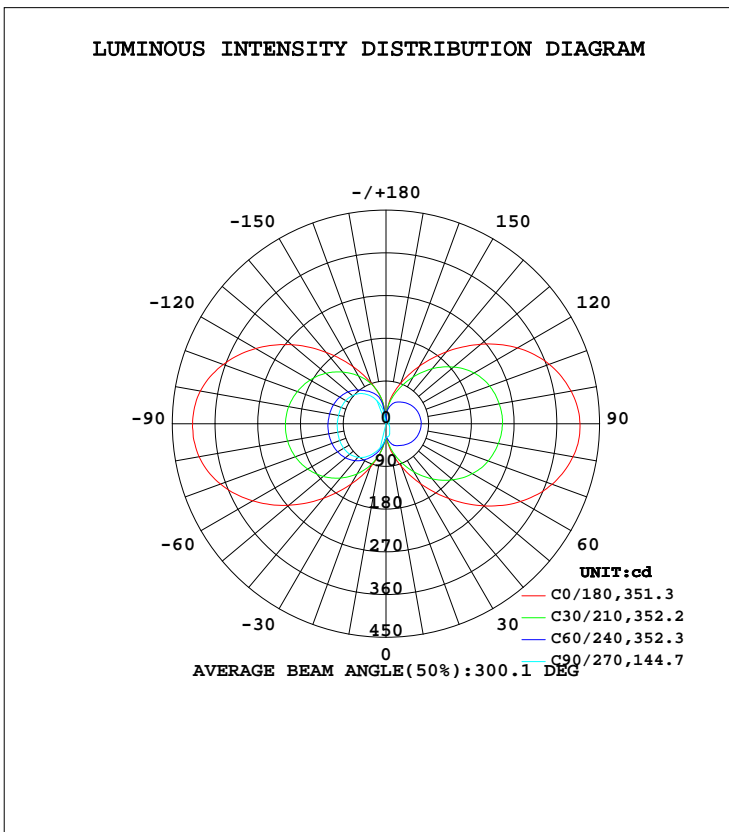


LUMINAIRE PHOTOMETRIC TEST REPORT

Test:U:120.0V I:0.2470A P:29.24W PF:0.9866 Freq:60.00Hz Lamp Flux:1901.84x1 lm		
NAME:	TYPE:LED	WEIGHT:
SPEC.:ASD-LWS27B-36D30BK_5000K	DIM.:	SERIAL No.:
MFR.: ASD Lighting Corp	SUR.:	Shielding Angle:

DATA OF LAMP		PHOTOMETRIC DATA Eff: 65.04 lm/W			
MODEL	ASD-LWS27B-36D30BK	I _{max} (cd)	408.9	S/MH(C0/180)	5.17
NOMINAL POWER(W)	30	LOR(%)	100.0	S/MH(C90/270)	3.16
RATED VOLTAGE(V)	120-277	TOTAL FLUX(lm)	1901.8	η UP, DN(C0-180)	23.3,23.7
NOMINAL FLUX(lm)	1901.84	CIE CLASS	DIFFUSE	η UP, DN(C180-360)	26.0,27.0
LAMPS INSIDE	1	η up(%)	49.3	CIBSE SHR NOM	1.25
TEST VOLTAGE(V)	120	η down(%)	50.7	CIBSE SHR MAX	1.35



C Range: 0 - 360DEG
 C Interval: 15.0DEG
 Test Speed: HIGH
 Temperature: 24.9DEG
 Operators: Alan Wang
 Test Date: 14 December 2023

γ Range: 0 - 180DEG
 γ Interval: 1.0DEG
 Test System: EVERFINE GO-R5000_V2 SYSTEM V2.00.416
 Humidity: 42.0%
 Test Distance: 2.500m [K=1.0423]
 Remarks:

ZONAL FLUX DIAGRAM

ZONAL FLUX DIAGRAM:

γ	C0	C45	C90	C135	C180	C225	C270	C315	γ	Φ zone	Φ total	%lum,lamp
10	55.97	44.26	27.59	45.42	57.16	54.36	45.51	53.72	0- 10	3.805	3.805	0.20,0.20
20	96.23	65.71	22.95	69.13	99.26	80.91	62.84	82.21	10- 20	17.35	21.15	1.11,1.11
30	146.1	82.69	15.70	89.43	146.7	103.5	79.75	106.7	20- 30	39.36	60.51	3.18,3.18
40	205.4	95.36	12.36	105.7	204.9	122.3	92.43	127.2	30- 40	69.07	129.6	6.81,6.81
50	269.4	106.3	10.12	119.1	267.1	136.9	99.86	143.2	40- 50	104.6	234.2	12.3,12.3
60	327.6	114.6	8.337	129.0	324.9	147.8	103.2	155.3	50- 60	141.8	376.0	19.8,19.8
70	372.6	120.4	6.876	135.7	371.1	155.1	103.9	163.2	60- 70	175.3	551.2	29,29
80	399.8	124.0	5.914	139.9	399.9	158.5	103.4	166.8	70- 80	200.0	751.2	39.5,39.5
90	408.8	125.9	5.833	141.8	407.4	159.2	102.6	167.3	80- 90	212.8	964.0	50.7,50.7
100	396.3	124.5	5.847	140.2	397.1	156.7	101.5	163.7	90-100	211.9	1176	61.8,61.8
110	366.1	121.6	6.689	136.1	365.0	151.1	100.4	157.7	100-110	197.3	1373	72.2,72.2
120	319.9	116.3	7.941	128.7	317.2	142.4	97.86	148.0	110-120	171.3	1545	81.2,81.2
130	260.7	108.1	9.566	117.9	259.3	130.4	92.26	135.2	120-130	137.4	1682	88.4,88.4
140	197.9	96.84	11.64	103.3	196.6	115.0	83.29	118.6	130-140	100.3	1782	93.7,93.7
150	139.6	82.14	14.97	85.18	139.2	98.47	69.08	96.25	140-150	65.31	1848	97.1,97.1
160	91.00	62.96	21.08	63.25	91.13	79.55	49.02	67.10	150-160	36.49	1884	99.1,99.1
170	52.02	40.63	23.96	39.22	51.85	49.01	17.97	33.28	160-170	15.36	1899	99.9,99.9
180	0	0	23.31	0	0.1024	0.1094	0.1210	0.0996	170-180	2.350	1902	100,100
DEG	LUMINOUS INTENSITY:cd									UNIT:lm		

Conical surface Flux(90deg): 177.24 lm

%lum = 9.3%

%lamp = 9.3%

Conical surface Flux(120deg): 375.99 lm

%lum = 19.8%

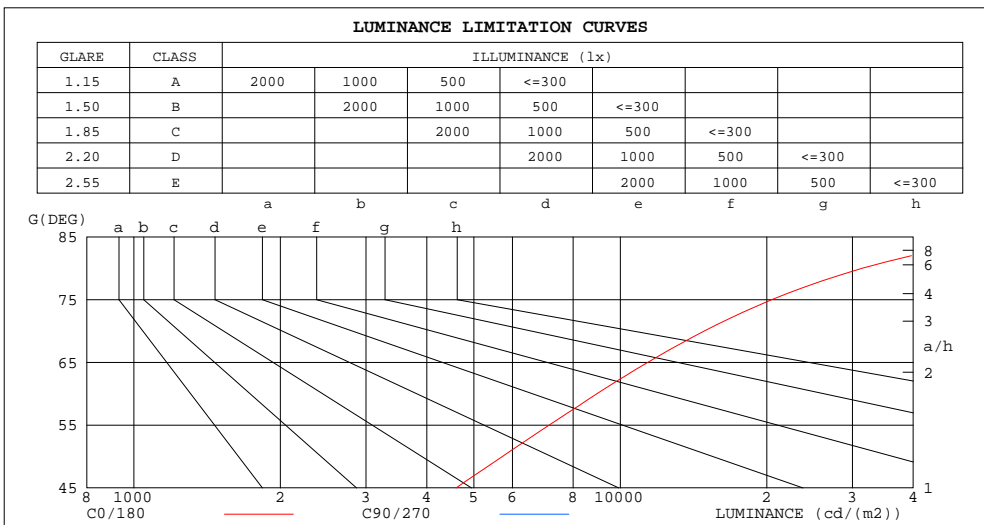
%lamp = 19.8%

C Range: 0 - 360DEG
 C Interval: 15.0DEG
 Test Speed: HIGH
 Temperature: 24.9DEG
 Operators: Alan Wang
 Test Date: 14 December 2023

γ Range: 0 - 180DEG
 γ Interval: 1.0DEG
 Test System: EVERFINE GO-R5000_V2 SYSTEM V2.00.416
 Humidity: 42.0%
 Test Distance: 2.500m [K=1.0423]
 Remarks:

LUMINANCE LIMITATION CURVES

Test:U:120.0V I:0.2470A P:29.24W PF:0.9866 Freq:60.00Hz Lamp Flux:1901.84x1 lm		
NAME:	TYPE:LED	WEIGHT:
SPEC.:ASD-LWS27B-36D30BK_5000K	DIM.:	SERIAL No.:
MFR.: ASD Lighting Corp	SUR.:	Shielding Angle:



LUMINANCE cd/(m2)		
G(DEG)	C0/180	C90/270
85	63852	917
80	31455	465
75	20493	332
70	14882	275
65	11390	245
60	8951	228
55	7143	219
50	5726	215
45	4595	216

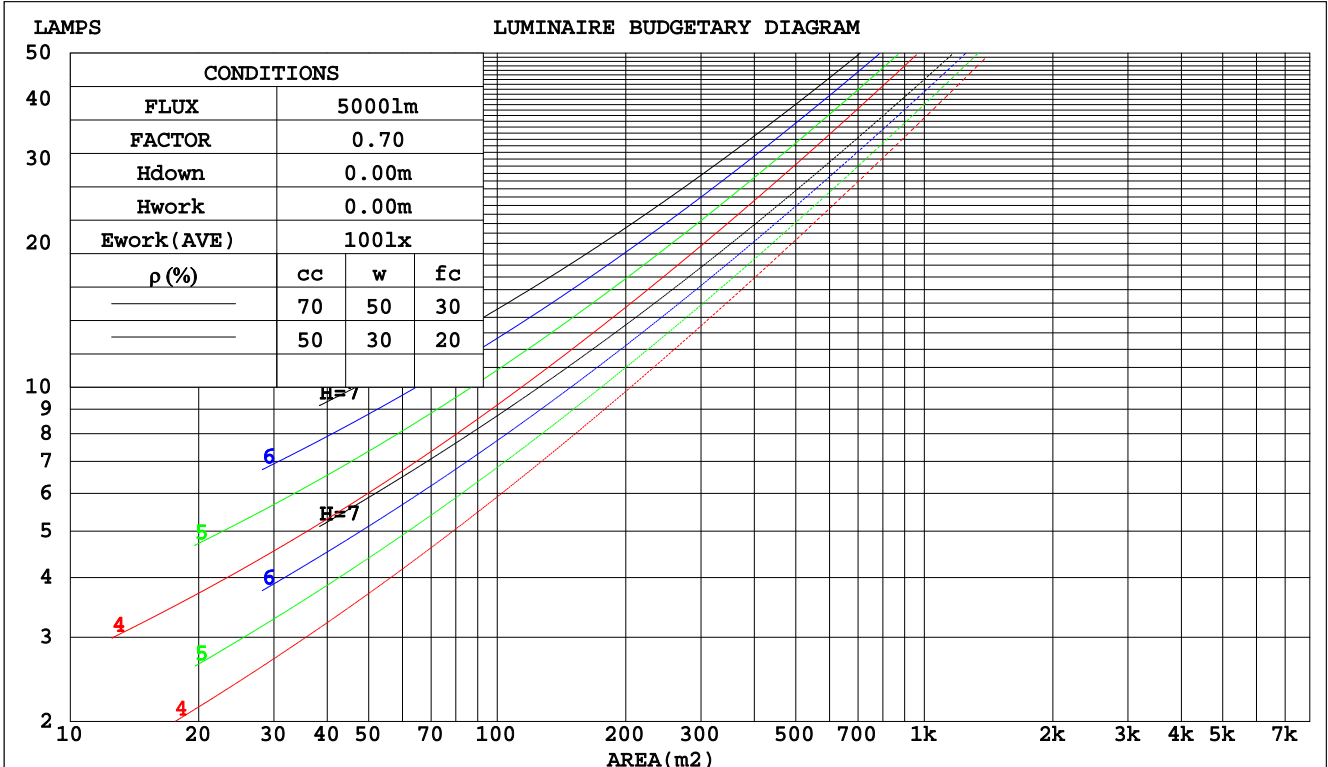
C Range: 0 - 360DEG
 C Interval: 15.0DEG
 Test Speed: HIGH
 Temperature: 24.9DEG
 Operators: Alan Wang
 Test Date: 14 December 2023

γ Range: 0 - 180DEG
 γ Interval: 1.0DEG
 Test System: EVERFINE GO-R5000_V2 SYSTEM V2.00.416
 Humidity: 42.0%
 Test Distance: 2.500m [K=1.0423]
 Remarks:

CU AND LUMINAIRE BUDGETARY ESTIMATE DIAGRAM

Test:U:120.0V I:0.2470A P:29.24W PF:0.9866 Freq:60.00Hz Lamp Flux:1901.84x1 lm		
NAME:	TYPE:LED	WEIGHT:
SPEC.:ASD-LWS27B-36D30BK_5000K	DIM.:	SERIAL No.:
MFR.: ASD Lighting Corp	SUR.:	Shielding Angle:

pcc	80%			70%			50%			30%			10%			0
	50%	30%	10%	50%	30%	10%	50%	30%	10%	50%	30%	10%	50%	30%	10%	0
pw																0
pfc	20%			20%			20%			20%			20%			0
RCR	RCR:Room Cavity Ratio						Coefficients of Utilization(CU)									
0.0	1.07	1.07	1.07	.99	.99	.99	.84	.84	.84	.70	.70	.70	.57	.57	.57	.51
1.0	.85	.79	.74	.78	.73	.68	.65	.61	.57	.52	.49	.46	.41	.39	.37	.31
2.0	.71	.63	.56	.65	.58	.51	.54	.48	.43	.43	.38	.34	.33	.30	.27	.21
3.0	.61	.52	.44	.56	.47	.40	.45	.39	.33	.36	.31	.27	.27	.24	.20	.16
4.0	.53	.43	.36	.48	.39	.33	.39	.32	.27	.31	.26	.21	.24	.19	.16	.12
5.0	.46	.37	.29	.42	.34	.27	.34	.28	.22	.27	.22	.18	.21	.16	.13	.09
6.0	.41	.32	.25	.37	.29	.23	.31	.24	.19	.24	.19	.15	.18	.14	.11	.08
7.0	.37	.27	.21	.33	.25	.19	.27	.21	.16	.22	.16	.12	.16	.12	.09	.06
8.0	.33	.24	.18	.30	.22	.17	.25	.18	.14	.20	.14	.11	.15	.11	.08	.05
9.0	.30	.21	.16	.27	.20	.15	.22	.16	.12	.18	.13	.09	.14	.10	.07	.04
10.0	.27	.19	.14	.25	.18	.13	.21	.15	.10	.16	.12	.08	.13	.09	.06	.04



C Range: 0 - 360DEG
 C Interval: 15.0DEG
 Test Speed: HIGH
 Temperature: 24.9DEG
 Operators: Alan Wang
 Test Date: 14 December 2023

γ Range: 0 - 180DEG
 γ Interval: 1.0DEG
 Test System: EVERFINE GO-R5000_V2 SYSTEM V2.00.416
 Humidity: 42.0%
 Test Distance: 2.500m [K=1.0423]
 Remarks:

WEC AND CCEC

Test:U:120.0V I:0.2470A P:29.24W PF:0.9866 Freq:60.00Hz Lamp Flux:1901.84x1 lm		
NAME:	TYPE:LED	WEIGHT:
SPEC.:ASD-LWS27B-36D30BK_5000K	DIM.:	SERIAL No.:
MFR.: ASD Lighting Corp	SUR.:	Shielding Angle:

ρcc	80%			70%			50%			30%			10%			0
ρw	50%	30%	10%	50%	30%	10%	50%	30%	10%	50%	30%	10%	50%	30%	10%	0
ρfc	20%			20%			20%			20%			20%			0
RCR	RCR:Room Cavity Ratio						Wall Exitance Coefficients(WEC)									
0.0																
1.0	.437	.248	.079	.414	.236	.075	.373	.214	.068	.334	.193	.062	.299	.173	.056	
2.0	.360	.197	.060	.339	.187	.058	.301	.167	.052	.266	.149	.047	.233	.132	.042	
3.0	.311	.166	.050	.292	.157	.047	.257	.140	.042	.225	.123	.038	.195	.108	.033	
4.0	.275	.143	.042	.258	.135	.040	.226	.120	.036	.196	.105	.032	.169	.092	.028	
5.0	.247	.126	.036	.232	.119	.035	.202	.105	.031	.175	.092	.027	.149	.080	.024	
6.0	.224	.113	.032	.210	.106	.031	.183	.094	.027	.157	.082	.024	.134	.070	.021	
7.0	.206	.102	.029	.192	.096	.027	.167	.084	.024	.144	.074	.021	.121	.063	.019	
8.0	.190	.093	.026	.177	.087	.025	.154	.077	.022	.132	.067	.019	.111	.057	.017	
9.0	.176	.085	.024	.164	.080	.022	.143	.071	.020	.122	.061	.018	.103	.052	.015	
10.0	.164	.079	.022	.153	.074	.021	.133	.065	.018	.114	.056	.016	.096	.048	.014	

ρcc	80%			70%			50%			30%			10%			0
ρw	50%	30%	10%	50%	30%	10%	50%	30%	10%	50%	30%	10%	50%	30%	10%	0
ρfc	20%			20%			20%			20%			20%			0
RCR	RCR:Room Cavity Ratio						Ceiling Cavity Exitance Coefficients(CCEC)									
0.0	.566	.566	.566	.484	.484	.484	.330	.330	.330	.190	.190	.190	.061	.061	.061	
1.0	.568	.534	.503	.486	.458	.433	.332	.315	.299	.191	.182	.174	.061	.059	.056	
2.0	.563	.513	.471	.482	.442	.407	.330	.305	.284	.190	.178	.167	.061	.057	.054	
3.0	.556	.498	.452	.476	.430	.392	.327	.298	.275	.189	.174	.162	.061	.057	.053	
4.0	.548	.487	.440	.471	.420	.382	.324	.293	.269	.187	.172	.159	.060	.056	.052	
5.0	.541	.478	.431	.464	.413	.375	.320	.289	.265	.185	.170	.157	.060	.055	.052	
6.0	.533	.470	.425	.459	.407	.370	.316	.285	.262	.184	.168	.156	.059	.055	.051	
7.0	.526	.464	.421	.453	.402	.367	.313	.282	.260	.182	.166	.155	.059	.054	.051	
8.0	.520	.459	.418	.448	.398	.364	.310	.280	.258	.180	.165	.154	.058	.054	.051	
9.0	.514	.455	.415	.442	.395	.362	.307	.277	.257	.179	.164	.153	.058	.054	.051	
10.0	.508	.451	.413	.438	.391	.360	.304	.275	.256	.177	.163	.153	.057	.053	.051	

C Range: 0 - 360DEG
 C Interval: 15.0DEG
 Test Speed: HIGH
 Temperature: 24.9DEG
 Operators: Alan Wang
 Test Date: 14 December 2023

γ Range: 0 - 180DEG
 γ Interval: 1.0DEG
 Test System: EVERFINE GO-R5000_V2 SYSTEM V2.00.416
 Humidity: 42.0%
 Test Distance: 2.500m [K=1.0423]
 Remarks:

UGR(Unified Glare Rating) Table

Test:U:120.0V I:0.2470A P:29.24W PF:0.9866 Freq:60.00Hz Lamp Flux:1901.84x1 lm										
NAME:					TYPE:LED			WEIGHT:		
SPEC.:ASD-LWS27B-36D30BK_5000K					DIM.:			SERIAL No.:		
MFR.: ASD Lighting Corp					SUR.:			Shielding Angle:		
ceiling/cavity	0.7	0.7	0.5	0.5	0.3	0.7	0.7	0.5	0.5	0.3
walls	0.5	0.3	0.5	0.3	0.3	0.5	0.3	0.5	0.3	0.3
working plane	0.2	0.2	0.2	0.2	0.2	0.2	0.2	0.2	0.2	0.2
Room dimensions	Viewed crosswise					Viewed endwise				
x = 2H y = 2H	18.2	19.3	19.1	20.2	21.4	6.1	7.2	7.0	8.1	9.3
3H	22.6	23.6	23.5	24.5	25.7	7.5	8.5	8.3	9.4	10.6
4H	24.9	25.9	25.8	26.8	28.0	8.1	9.1	9.0	10.0	11.2
6H	27.3	28.2	28.2	29.2	30.4	8.7	9.6	9.6	10.6	11.8
8H	28.6	29.5	29.5	30.4	31.7	9.0	9.9	9.9	10.9	12.1
12H	30.0	30.9	31.0	31.8	33.1	9.3	10.2	10.3	11.1	12.4
4H 2H	18.1	19.1	19.0	20.0	21.2	11.1	12.1	12.0	13.0	14.2
3H	22.8	23.7	23.8	24.6	25.9	12.5	13.4	13.5	14.3	15.6
4H	25.5	26.2	26.4	27.2	28.5	13.2	14.0	14.2	15.0	16.2
6H	28.3	29.0	29.3	30.0	31.3	13.9	14.6	14.8	15.5	16.8
8H	29.8	30.5	30.8	31.5	32.8	14.1	14.8	15.1	15.8	17.1
12H	31.5	32.1	32.4	33.1	34.4	14.4	15.0	15.4	16.0	17.3
8H 4H	25.4	26.1	26.4	27.1	28.4	17.1	17.7	18.0	18.7	20.0
6H	28.6	29.1	29.6	30.1	31.5	18.0	18.6	19.0	19.6	20.9
8H	30.4	30.9	31.4	31.9	33.2	18.4	18.9	19.4	20.0	21.3
12H	32.4	32.9	33.4	33.9	35.3	18.8	19.2	19.8	20.3	21.6
12H 4H	25.4	26.0	26.3	27.0	28.3	18.7	19.3	19.7	20.3	21.6
6H	28.5	29.1	29.5	30.1	31.4	19.8	20.3	20.8	21.4	22.7
8H	30.4	30.9	31.4	31.9	33.3	20.4	20.9	21.4	21.9	23.3
Variations with the observer position at spacings:										
S = 1.0H	+ 0.1 / - 0.1					+ 0.1 / - 0.1				
1.5H	+ 0.3 / - 0.3					+ 0.2 / - 0.1				
2.0H	+ 0.4 / - 0.5					+ 0.4 / - 0.3				

CIE Pub.117, 1902 lm Total Lamp Luminous Flux Corrected (8log(F/F0) = 2.2)
 Area: 0.0732 m2

C Range: 0 - 360DEG
 C Interval: 15.0DEG
 Test Speed: HIGH
 Temperature: 24.9DEG
 Operators: Alan Wang
 Test Date: 14 December 2023

γ Range: 0 - 180DEG
 γ Interval: 1.0DEG
 Test System: EVERFINE GO-R5000_V2 SYSTEM V2.00.416
 Humidity: 42.0%
 Test Distance: 2.500m [K=1.0423]
 Remarks:

UTILIZATION FACTORS TABLE

Test:U:120.0V I:0.2470A P:29.24W PF:0.9866 Freq:60.00Hz Lamp Flux:1901.84x1 lm		
NAME:	TYPE:LED	WEIGHT:
SPEC.:ASD-LWS27B-36D30BK_5000K	DIM.:	SERIAL No.:
MFR.: ASD Lighting Corp	SUR.:	Shielding Angle:

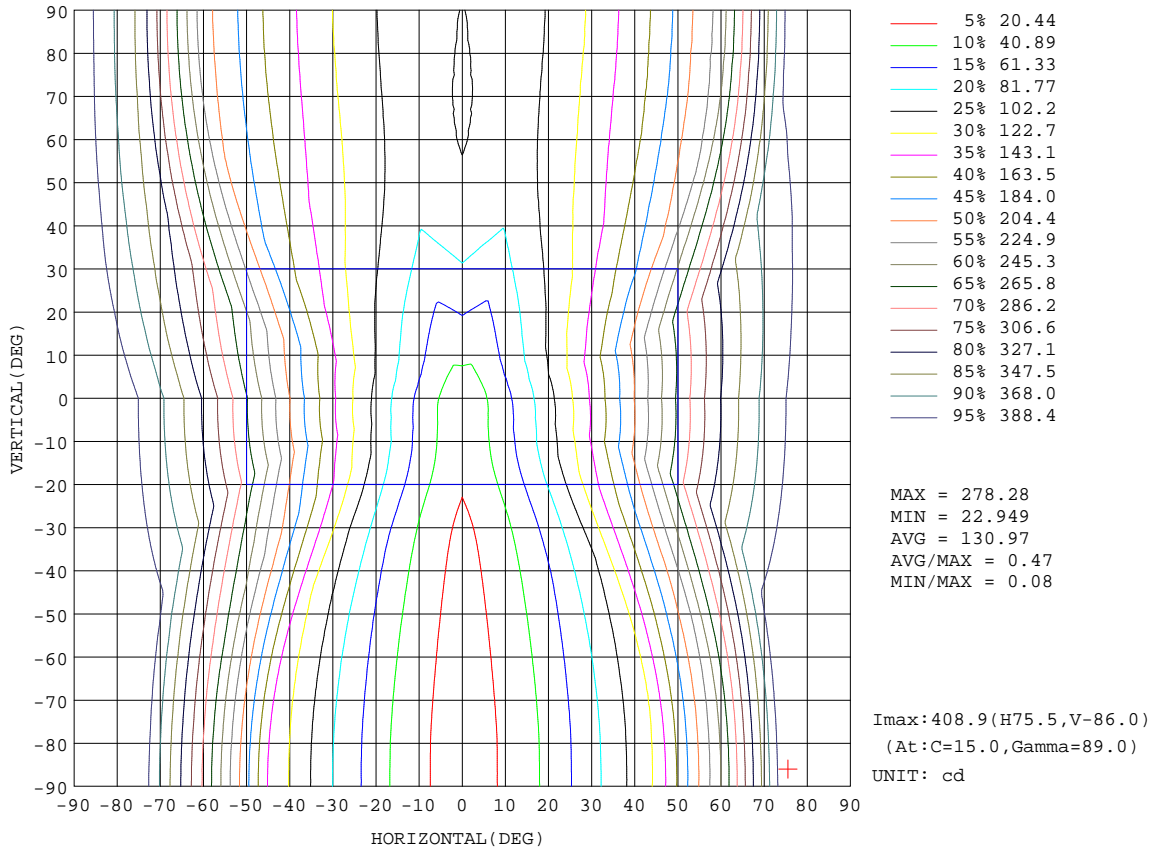
REFLECTANCE										
Ceiling	0.8	0.8	0.8	0.7	0.7	0.7	0.5	0.5	0.5	0
Walls	0.7	0.5	0.3	0.7	0.5	0.3	0.7	0.5	0.3	0
Working plane	0.2	0.2	0.2	0.2	0.2	0.2	0.2	0.2	0.2	0
ROOM INDEX	UTILIZATION FACTORS(PERCENT) $k(RI) \times RCR = 5$									
k = 0.60	34	21	14	32	20	13	29	18	12	5
0.80	42	28	19	40	27	19	35	24	17	7
1.00	50	35	25	46	33	24	40	31	21	10
1.25	56	42	32	52	39	30	45	34	26	13
1.50	62	47	37	57	44	35	49	38	31	15
2.00	70	56	46	64	52	43	55	45	37	19
2.50	75	62	52	69	58	49	58	50	42	22
3.00	79	67	58	73	63	54	62	53	47	25
4.00	85	74	66	78	69	61	66	59	53	29
5.00	88	79	72	81	73	67	68	62	57	32
ROOM INDEX	UF(total)									Direct
According to DIN EN 13032-2 2004			Suspended				SHRNOM = 1.25			

C Range: 0 - 360DEG
 C Interval: 15.0DEG
 Test Speed: HIGH
 Temperature: 24.9DEG
 Operators: Alan Wang
 Test Date: 14 December 2023

γ Range: 0 - 180DEG
 γ Interval: 1.0DEG
 Test System: EVERFINE GO-R5000_V2 SYSTEM V2.00.416
 Humidity: 42.0%
 Test Distance: 2.500m [K=1.0423]
 Remarks:

ISOCANDELA DIAGRAM

Test:U:120.0V I:0.2470A P:29.24W PF:0.9866 Freq:60.00Hz Lamp Flux:1901.84x1 lm		
NAME:	TYPE:LED	WEIGHT:
SPEC.:ASD-LWS27B-36D30BK_5000K	DIM.:	SERIAL No.:
MFR.: ASD Lighting Corp	SUR.:	Shielding Angle:

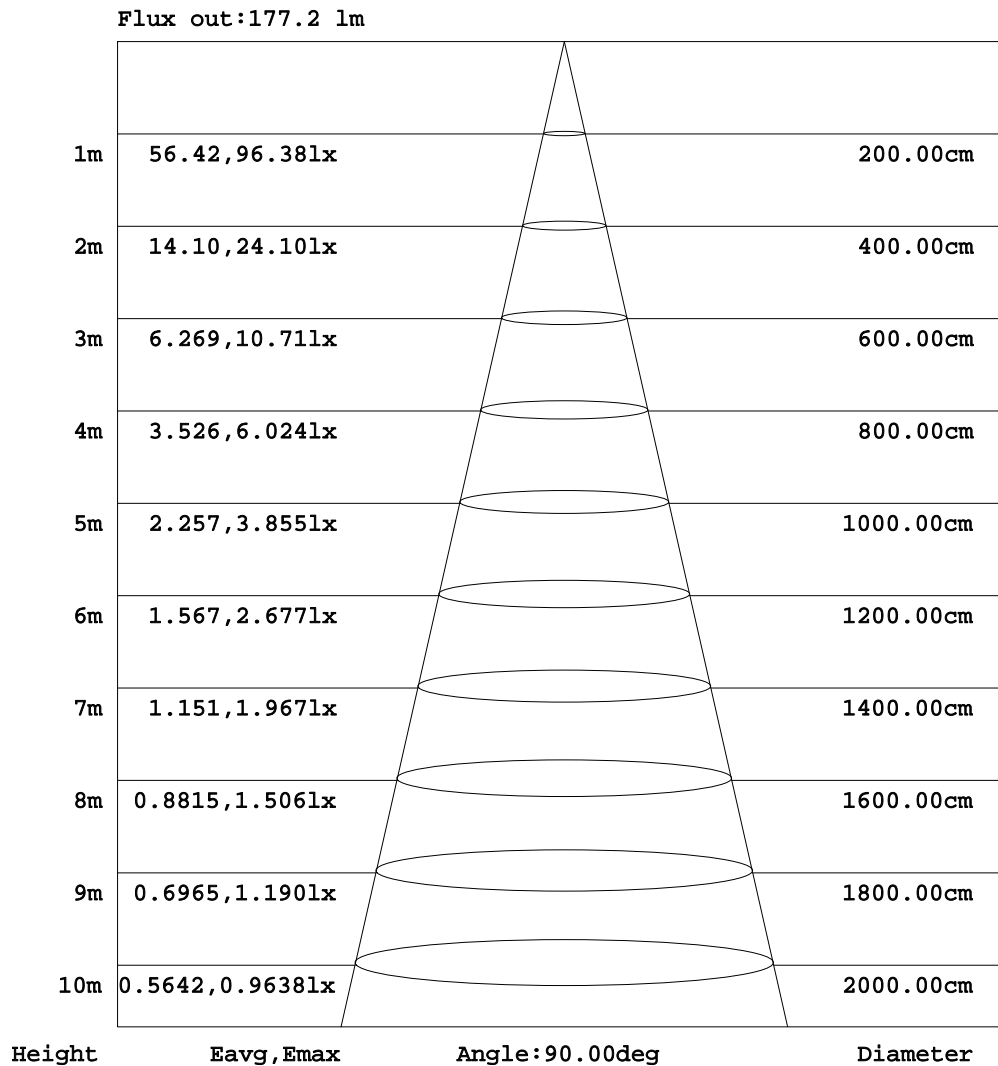


C Range: 0 - 360DEG
 C Interval: 15.0DEG
 Test Speed: HIGH
 Temperature: 24.9DEG
 Operators: Alan Wang
 Test Date: 14 December 2023

γ Range: 0 - 180DEG
 γ Interval: 1.0DEG
 Test System: EVERFINE GO-R5000_V2 SYSTEM V2.00.416
 Humidity: 42.0%
 Test Distance: 2.500m [K=1.0423]
 Remarks:

AAI Figure

Test:U:120.0V I:0.2470A P:29.24W PF:0.9866 Freq:60.00Hz Lamp Flux:1901.84x1 lm		
NAME:	TYPE:LED	WEIGHT:
SPEC.:ASD-LWS27B-36D30BK_5000K	DIM.:	SERIAL No.:
MFR.: ASD Lighting Corp	SUR.:	Shielding Angle:



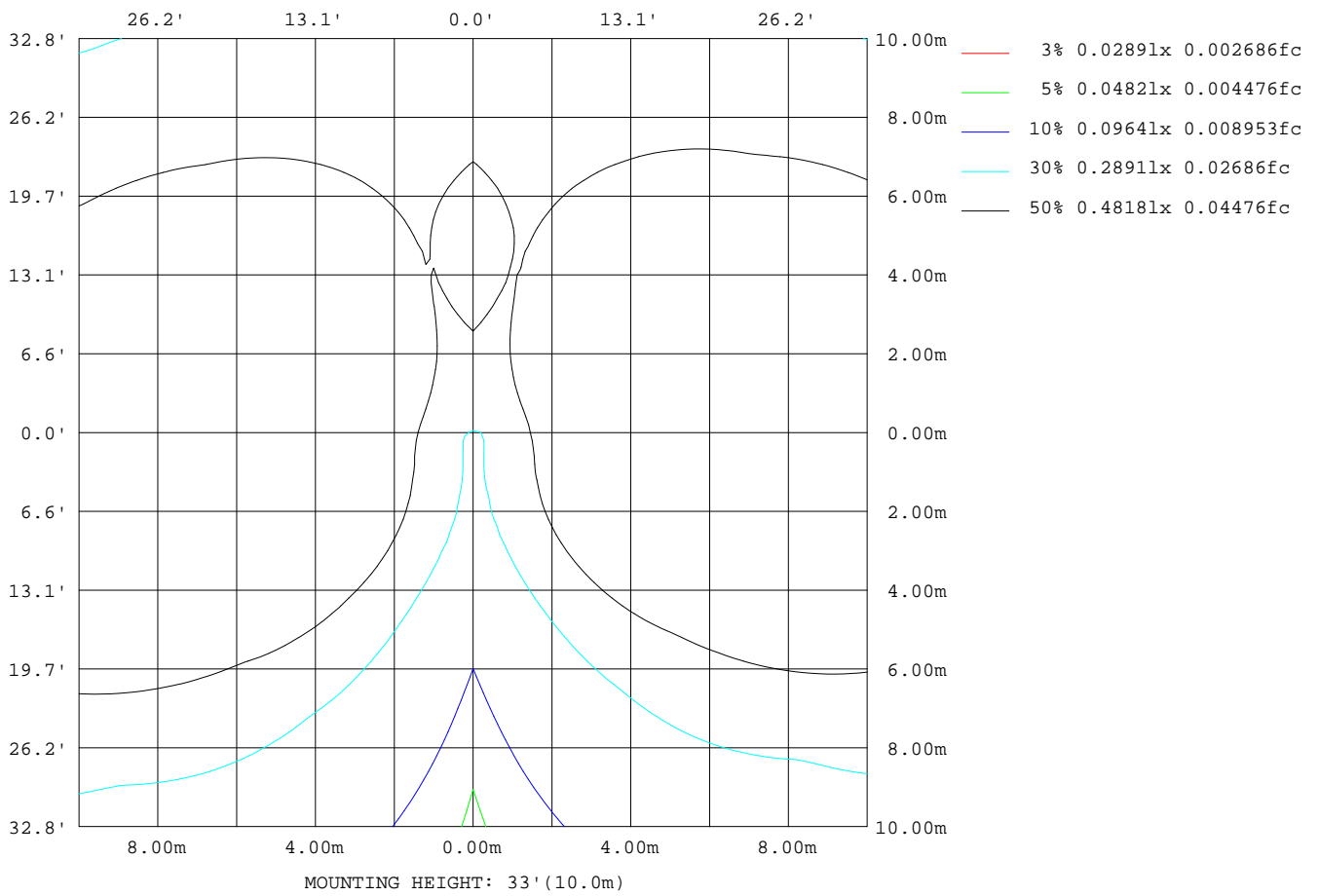
Note:The Curves indicate the illuminated area and the average illumination when the luminaire is at different distance.

C Range: 0 - 360DEG
 C Interval: 15.0DEG
 Test Speed: HIGH
 Temperature: 24.9DEG
 Operators:Alan Wang
 Test Date:14 December 2023

γ Range: 0 - 180DEG
 γ Interval: 1.0DEG
 Test System:EVERFINE GO-R5000_V2 SYSTEM V2.00.416
 Humidity: 42.0%
 Test Distance:2.500m [K=1.0423]
 Remarks:

ISOLUX DIAGRAM

Test:U:120.0V I:0.2470A P:29.24W PF:0.9866 Freq:60.00Hz Lamp Flux:1901.84x1 lm		
NAME:	TYPE:LED	WEIGHT:
SPEC.:ASD-LWS27B-36D30BK_5000K	DIM.:	SERIAL No.:
MFR.: ASD Lighting Corp	SUR.:	Shielding Angle:



C Range: 0 - 360DEG
 C Interval: 15.0DEG
 Test Speed: HIGH
 Temperature: 24.9DEG
 Operators: Alan Wang
 Test Date: 14 December 2023

γ Range: 0 - 180DEG
 γ Interval: 1.0DEG
 Test System: EVERFINE GO-R5000_V2 SYSTEM V2.00.416
 Humidity: 42.0%
 Test Distance: 2.500m [K=1.0423]
 Remarks:

LED Avg.L Report

Test:U:120.0V I:0.2470A P:29.24W PF:0.9866 Freq:60.00Hz Lamp Flux:1901.84x1 lm		
NAME:	TYPE:LED	WEIGHT:
SPEC.:ASD-LWS27B-36D30BK_5000K	DIM.:	SERIAL No.:
MFR.: ASD Lighting Corp	SUR.:	Shielding Angle:

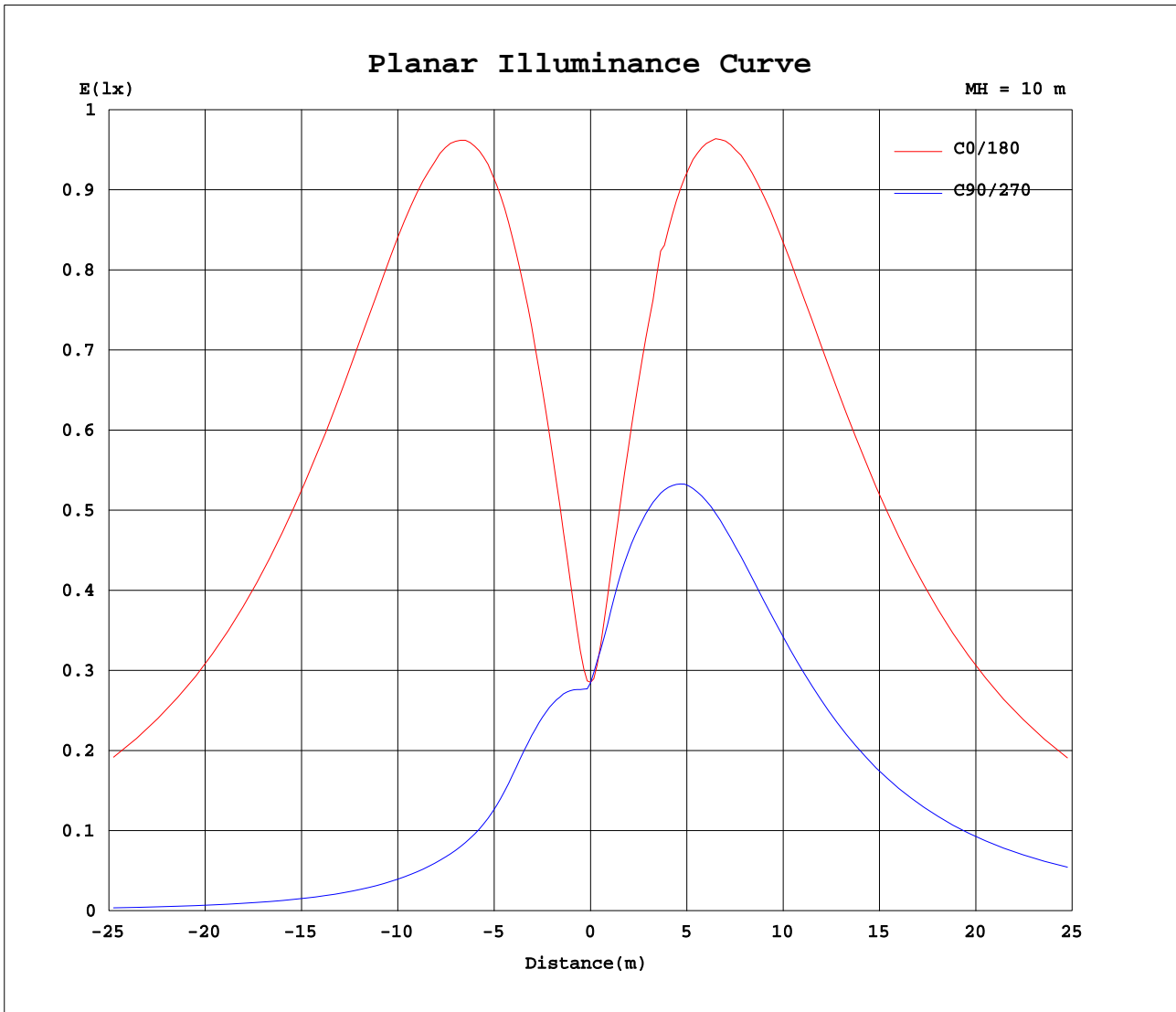
AvgL	cd/m2
L_0~180(65)av	11347
L_0~180(75)av	20490
L_0~180(85)av	63752
L_90~270(65)av	1798
L_90~270(75)av	2898
L_90~270(85)av	8534
L_45(65)av	4544
L_45(75)av	7692
L_45(85)av	23240

Standard: GB/T 29293-2012

C Range: 0 - 360DEG
C Interval: 15.0DEG
Test Speed: HIGH
Temperature: 24.9DEG
Operators: Alan Wang
Test Date: 14 December 2023

γ Range: 0 - 180DEG
 γ Interval: 1.0DEG
Test System: EVERFINE GO-R5000_V2 SYSTEM V2.00.416
Humidity: 42.0%
Test Distance: 2.500m [K=1.0423]
Remarks:

Planar Illuminance Curve



C Range: 0 - 360DEG
 C Interval: 15.0DEG
 Test Speed: HIGH
 Temperature: 24.9DEG
 Operators: Alan Wang
 Test Date: 14 December 2023

γ Range: 0 - 180DEG
 γ Interval: 1.0DEG
 Test System: EVERFINE GO-R5000_V2 SYSTEM V2.00.416
 Humidity: 42.0%
 Test Distance: 2.500m [K=1.0423]
 Remarks:

LUMINOUS DISTRIBUTION INTENSITY DATA

Test:U:120.0V I:0.2470A P:29.24W PF:0.9866 Freq:60.00Hz Lamp Flux:1901.84x1 lm		
NAME:	TYPE:LED	WEIGHT:
SPEC.:ASD-LWS27B-36D30BK_5000K	DIM.:	SERIAL No.:
MFR.: ASD Lighting Corp	SUR.:	Shielding Angle:

Table--1

UNIT: cd

C(DEG) γ (DEG)	0	15	30	45	60	75	90	105	120	135	150	165	180	195	210	225	240	255	270
0	28.5	28.5	28.5	28.5	28.5	28.5	28.5	28.4	28.4	28.2	28.1	28.1	28.5	28.5	28.5	28.5	28.5	28.5	28.5
5	38.6	37.2	35.7	33.4	30.8	28.6	27.9	28.7	31.1	33.9	36.4	38.0	39.5	40.4	40.3	39.2	37.5	36.2	36.1
10	56.0	53.4	49.9	44.3	37.4	30.5	27.6	30.9	38.3	45.4	51.3	54.7	57.2	58.6	57.8	54.4	49.2	43.9	45.5
15	75.0	71.6	65.4	55.3	43.5	32.0	26.0	32.9	45.2	57.6	67.4	73.5	76.3	77.9	74.9	68.2	59.5	50.4	54.0
20	96.2	91.9	81.8	65.7	48.0	31.9	22.9	33.3	50.8	69.1	85.1	94.4	99.3	98.2	91.5	80.9	69.1	56.9	62.8
25	120	115	99.1	74.9	51.0	30.6	18.8	32.2	54.6	80.0	104	118	121	120	107	92.6	78.4	63.8	71.6
30	146	140	117	82.7	53.3	29.7	15.7	31.6	57.6	89.4	123	143	147	142	122	104	87.1	70.6	79.7
35	175	168	134	89.3	55.9	29.8	13.8	31.9	60.6	98.0	143	171	175	165	136	114	95.0	76.6	86.7
40	205	198	152	95.4	58.7	30.4	12.4	32.5	63.8	106	163	201	205	189	149	122	102	81.5	92.4
45	238	231	168	101	61.4	30.9	11.2	33.2	67.2	113	183	233	236	213	162	130	107	85.4	96.7
50	269	263	184	106	64.1	31.4	10.1	33.7	70.0	119	203	263	267	237	173	137	112	88.4	99.9
55	300	294	198	111	66.4	31.8	9.19	34.2	72.5	124	221	293	297	260	182	143	115	90.7	102
60	328	323	210	115	68.4	32.1	8.34	34.6	74.9	129	237	322	325	281	191	148	118	92.1	103
65	352	349	221	118	70.2	32.3	7.57	34.8	76.8	133	252	348	350	300	198	152	120	92.9	104
70	373	370	229	120	71.6	32.4	6.88	34.9	78.5	136	264	370	371	317	204	155	121	93.3	104
75	388	387	235	122	72.5	32.4	6.30	35.0	79.7	138	273	387	388	329	208	157	122	93.3	104
80	400	400	240	124	73.3	32.5	5.91	35.0	80.6	140	279	399	400	337	210	158	123	93.2	103
85	407	407	244	125	74.0	32.7	5.85	35.3	81.1	141	282	406	406	342	212	159	123	93.0	103
90	409	408	246	126	74.2	32.8	5.83	35.4	81.5	142	283	408	407	344	212	159	122	92.8	103
95	405	405	245	126	74.2	32.8	5.82	35.2	81.3	141	282	404	405	342	211	158	121	92.2	102
100	396	395	242	125	73.5	32.5	5.85	35.0	80.4	140	278	396	397	335	208	157	121	91.5	102
105	383	381	238	123	72.9	32.5	6.20	34.8	79.6	138	271	382	384	325	204	154	119	91.0	101
110	366	363	233	122	71.8	32.5	6.69	34.7	78.3	136	261	363	365	311	198	151	118	90.3	100
115	345	341	225	119	70.4	32.3	7.27	34.4	76.8	133	248	340	343	294	192	147	115	89.2	99.4
120	320	314	214	116	68.7	32.1	7.94	34.1	74.8	129	233	314	317	275	185	142	113	87.5	97.9
125	291	284	201	113	66.6	31.7	8.71	33.6	72.2	124	217	285	289	253	176	137	109	85.5	95.6
130	261	253	186	108	64.2	31.3	9.57	32.9	69.3	118	198	254	259	230	165	130	105	82.7	92.3
135	229	222	170	103	61.6	30.7	10.5	32.1	65.9	111	178	223	228	205	154	123	99.6	78.9	88.1
140	198	191	151	96.8	58.8	30.2	11.6	31.3	62.4	103	157	192	197	181	142	115	92.9	73.8	83.3
145	168	161	132	89.9	55.9	29.6	13.0	30.4	58.7	94.7	137	162	167	158	130	107	86.4	67.1	76.6
150	140	134	114	82.1	53.1	29.6	15.0	29.9	55.2	85.2	116	135	139	135	117	98.5	79.5	60.8	69.1
155	114	109	95.1	73.1	50.3	30.2	17.8	30.0	51.2	74.7	96.6	110	114	114	103	89.5	73.5	56.5	60.0
160	91.0	86.2	77.3	63.0	46.2	30.5	21.1	29.9	46.4	63.2	77.8	86.7	91.1	92.4	88.6	79.5	66.7	51.7	49.0
165	70.4	66.8	61.1	51.9	40.8	29.6	23.2	28.5	40.0	51.2	60.7	66.3	70.6	71.5	71.6	67.1	58.3	46.0	37.1
170	52.0	49.1	45.7	40.6	34.0	27.4	24.0	26.0	32.6	39.2	44.7	48.2	51.9	52.3	52.7	49.0	42.3	25.7	18.0
175	19.3	25.7	29.1	29.6	27.1	24.8	23.7	23.9	25.5	28.0	27.7	25.0	20.4	20.2	16.8	11.3	7.50	4.52	2.06
180	0.00	0.00	0.00	0.00	6.14	21.5	23.3	21.9	7.79	0.00	0.00	0.00	0.10	0.10	0.10	0.11	0.12	0.12	0.12

C Range: 0 - 360DEG
 C Interval: 15.0DEG
 Test Speed: HIGH
 Temperature: 24.9DEG
 Operators: Alan Wang
 Test Date: 14 December 2023

γ Range: 0 - 180DEG
 γ Interval: 1.0DEG
 Test System: EVERFINE GO-R5000_V2 SYSTEM V2.00.416
 Humidity: 42.0%
 Test Distance: 2.500m [K=1.0423]
 Remarks:

LUMINOUS DISTRIBUTION INTENSITY DATA

Test:U:120.0V I:0.2470A P:29.24W PF:0.9866 Freq:60.00Hz Lamp Flux:1901.84x1 lm		
NAME:	TYPE:LED	WEIGHT:
SPEC.:ASD-LWS27B-36D30BK_5000K	DIM.:	SERIAL No.:
MFR.: ASD Lighting Corp	SUR.:	Shielding Angle:

Table--2

UNIT: cd

C(DEG) γ (DEG)	285	300	315	330	345														
0	28.4	28.4	28.2	28.1	28.1														
5	35.9	37.0	38.3	39.1	38.9														
10	43.4	48.7	53.7	57.0	57.3														
15	49.9	59.4	68.8	75.3	77.3														
20	56.5	69.4	82.2	93.3	98.9														
25	63.5	79.0	94.8	111	122														
30	70.1	88.1	107	129	147														
35	76.0	95.9	117	145	173														
40	81.2	103	127	161	201														
45	85.3	109	136	176	230														
50	88.2	114	143	189	259														
55	90.7	118	150	200	287														
60	92.2	121	155	210	314														
65	93.1	123	160	218	337														
70	93.6	125	163	224	356														
75	93.9	126	165	228	370														
80	93.6	126	167	231	381														
85	93.4	126	168	233	388														
90	93.1	126	167	233	390														
95	92.4	125	166	231	386														
100	91.7	124	164	227	376														
105	91.0	122	161	223	362														
110	90.0	120	158	216	346														
115	88.7	117	153	209	325														
120	86.8	114	148	200	302														
125	84.4	110	142	190	276														
130	81.4	106	135	178	248														
135	77.4	100	127	165	220														
140	73.0	93.9	119	150	190														
145	67.1	85.9	108	134	162														
150	60.4	75.9	96.2	117	136														
155	53.9	64.5	83.4	99.4	111														
160	45.5	52.6	67.1	81.3	89.5														
165	37.1	39.5	52.5	64.3	69.4														
170	18.4	18.0	33.3	43.8	49.3														
175	1.36	1.72	4.58	7.58	11.1														
180	0.12	0.12	0.10	0.12	0.11														

C Range: 0 - 360DEG
 C Interval: 15.0DEG
 Test Speed: HIGH
 Temperature: 24.9DEG
 Operators: Alan Wang
 Test Date: 14 December 2023

γ Range: 0 - 180DEG
 γ Interval: 1.0DEG
 Test System: EVERFINE GO-R5000_V2 SYSTEM V2.00.416
 Humidity: 42.0%
 Test Distance: 2.500m [K=1.0423]
 Remarks: