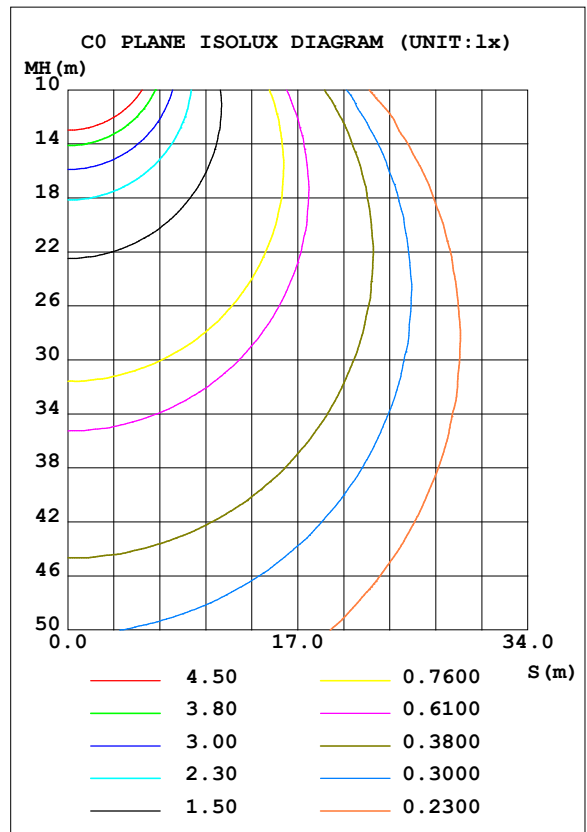
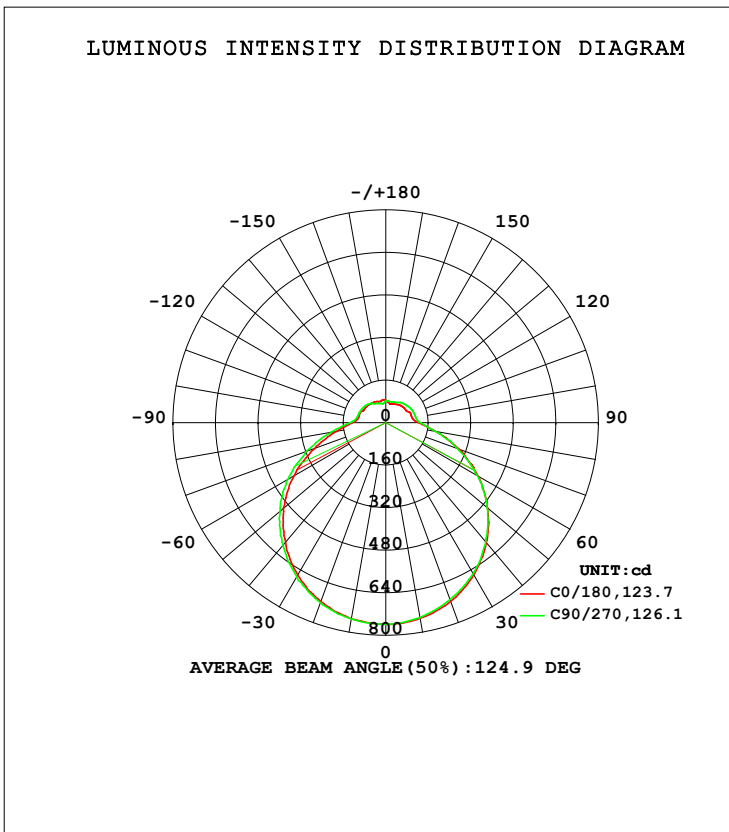


LUMINAIRE PHOTOMETRIC TEST REPORT

Test:U:119.29V I:0.3839A P:41.217W PF:0.8992 Freq:50.00Hz Lamp Flux:3206.32x1 lm		
NAME: ASD Lighting Corp	TYPE:	WEIGHT:
SPEC.:ASD-LFC-DD-20D42-AC-5000K	DIM.:	SERIAL No.:
MFR.: ASD Lighting Corp	SUR.:0.5*0.5	Shielding Angle:

DATA OF LAMP		PHOTOMETRIC DATA			
MODEL	ASD-LFC-DD-20D42-AC	Imax (cd)	759.2	S/MH (C0/180)	1.30
NOMINAL POWER (W)	--	LOR (%)	100.0	S/MH (C90/270)	1.31
RATED VOLTAGE (V)	--	TOTAL FLUX (lm)	3206.3	<input type="checkbox"/> UP, DN (C0-180)	9.6, 39.9
NOMINAL FLUX (lm)	3206.32	CIE CLASS	SEMI-D.	<input type="checkbox"/> UP, DN (C180-360)	9.5, 41.0
LAMPS INSIDE	1	<input type="checkbox"/> up (%)	19.1	CIBSE SHR NOM	1.50
TEST VOLTAGE (V)	--	<input type="checkbox"/> down (%)	80.9	CIBSE SHR MAX	1.50



C Range: 0 - 360DEG
 C Interval: 22.5DEG
 Test Speed: HIGH
 Temperature: 25.3DEG
 Operators: admin Test
 Date: 2022-04-15

Range: 0 - 180DEG
 Interval: 1.0DEG
 Test System: EVERFINE GO-2000B_V1 SYSTEM V2.00.411
 Humidity: 65.0%
 Test Distance: 8.780m [K=1.0000]
 Remarks:

ZONAL FLUX DIAGRAM

ZONAL FLUX DIAGRAM:

mm	C0	C45	C90	C135	C180	C225	C270	C315	mm	□ zone	□ total	%lum,lamp
10	746.9	744.7	744.5	744.4	749.2	748.3	749.7	749.5	0- 10	71.83	71.83	2.24,2.24
20	714.9	711.7	707.7	709.0	714.8	719.8	719.8	719.1	10- 20	207.1	278.9	8.7,8.7
30	661.2	656.4	655.9	654.1	662.4	666.9	670.1	668.7	20- 30	318.5	597.5	18.6,18.6
40	588.3	586.4	584.1	581.6	587.5	598.5	602.1	598.6	30- 40	393.5	990.9	30.9,30.9
50	499.8	502.7	497.0	491.0	502.9	513.5	519.0	514.0	40- 50	424.3	1415	44.1,44.1
60	399.0	398.2	398.5	389.5	398.6	415.3	423.7	411.2	50- 60	407.8	1823	56.9,56.9
70	296.2	288.7	287.3	285.5	285.4	303.1	319.1	297.1	60- 70	346.4	2169	67.7,67.7
80	189.7	178.6	189.1	187.2	188.1	190.3	210.6	201.4	70- 80	256.0	2426	75.6,75.6
90	123.5	119.8	130.4	125.2	125.5	122.0	134.8	131.6	80- 90	168.5	2594	80.9,80.9
100	101.7	111.2	115.1	101.7	105.4	109.0	110.5	101.8	90-100	124.6	2719	84.8,84.8
110	100.0	107.9	112.3	95.87	104.7	107.1	107.2	94.29	100-110	111.3	2830	88.3,88.3
120	89.88	103.9	108.2	94.79	96.01	104.9	104.1	92.00	110-120	100.7	2931	91.4,91.4
130	88.33	96.95	102.2	85.01	94.93	98.18	99.90	86.73	120-130	86.49	3017	94.1,94.1
140	85.61	86.59	96.84	82.99	91.63	90.35	93.87	77.39	130-140	70.30	3087	96.3,96.3
150	80.29	81.66	88.37	83.68	89.47	84.74	83.26	70.10	140-150	52.99	3140	97.9,97.9
160	75.27	77.31	82.55	76.16	84.36	76.00	77.65	70.02	150-160	36.84	3177	99.1,99.1
170	76.34	82.62	81.65	73.22	85.75	78.97	72.90	78.38	160-170	21.49	3199	99.8,99.8
180	86.11	87.98	84.03	81.81	86.16	87.95	84.18	81.78	170-180	7.640	3206	100,100
DEG	LUMINOUS INTENSITY:cd									UNIT:lm		

Conical surface Flux(90deg): 1202.2 lm

%lum = 37.5%

%lamp = 37.5%

Conical surface Flux(120deg): 1823.1 lm

%lum = 56.9%

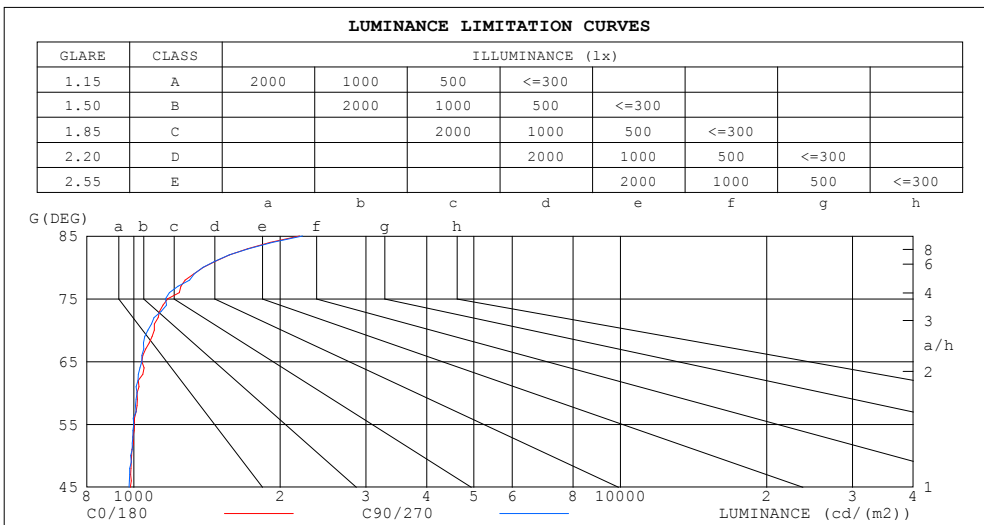
%lamp = 56.9%

C Range: 0 - 360DEG
 C Interval: 22.5DEG
 Test Speed: HIGH
 Temperature:25.3DEG
 Operators:admin Test
 Date:2022-04-15

□ Range: 0 - 180DEG
 □ Interval: 1.0DEG
 Test System:EVERFINE GO-2000B_V1 SYSTEM V2.00.411
 Humidity:65.0%
 Test Distance:8.780m [K=1.0000]
 Remarks:

LUMINANCE LIMITATION CURVES

Test:U:119.29V I:0.3839A P:41.217W PF:0.8992 Freq:50.00Hz Lamp Flux:3206.32x1 lm		
NAME: ASD Lighting Corp	TYPE:	WEIGHT:
SPEC.:ASD-LFC-DD-20D42-AC-5000K	DIM.:	SERIAL No.:
MFR.: ASD Lighting Corp	SUR.:0.5*0.5	Shielding Angle:



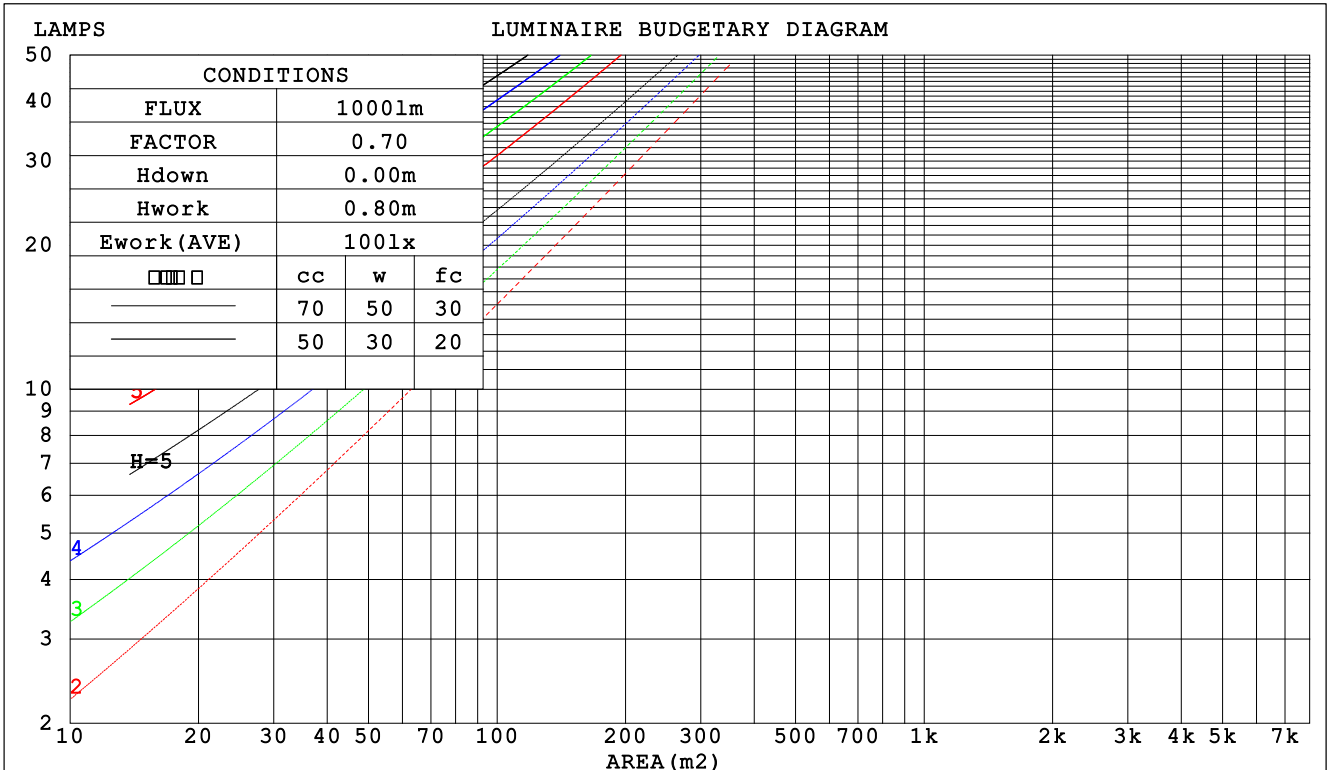
C Range: 0 - 360DEG
 C Interval: 22.5DEG
 Test Speed: HIGH
 Temperature:25.3DEG
 Operators:admin Test
 Date:2022-04-15

Range: 0 - 180DEG
 Interval: 1.0DEG
 Test System:EVERFINE GO-2000B_V1 SYSTEM V2.00.411
 Humidity:65.0%
 Test Distance:8.780m [K=1.0000]
 Remarks:

CU AND LUMINAIRE BUDGETARY ESTIMATE DIAGRAM

Test:U:119.29V I:0.3839A P:41.217W PF:0.8992 Freq:50.00Hz Lamp Flux:3206.32x1 lm		
NAME: ASD Lighting Corp	TYPE:	WEIGHT:
SPEC.:ASD-LFC-DD-20D42-AC-5000K	DIM.:	SERIAL No.:
MFR.: ASD Lighting Corp	SUR.:0.5*0.5	Shielding Angle:

□cc	80%			70%			50%			30%			10%			0
□w	50%	30%	10%	50%	30%	10%	50%	30%	10%	50%	30%	10%	50%	30%	10%	0
□fc	20%			20%			20%			20%			20%			0
RCR	RCR:Room Cavity Ratio						Coefficients of Utilization(CU)									
0.0	1.15	1.15	1.15	1.10	1.10	1.10	1.01	1.01	1.01	.92	.92	.92	.85	.85	.85	.81
1.0	.97	.92	.88	.93	.88	.84	.85	.82	.78	.78	.75	.73	.71	.69	.67	.64
2.0	.84	.76	.70	.80	.73	.68	.73	.68	.63	.67	.63	.59	.61	.58	.55	.52
3.0	.73	.64	.57	.70	.62	.56	.64	.57	.52	.59	.53	.49	.54	.49	.46	.43
4.0	.64	.55	.48	.61	.53	.47	.56	.49	.44	.52	.46	.41	.48	.43	.39	.36
5.0	.57	.48	.41	.55	.46	.40	.50	.43	.38	.46	.40	.35	.43	.37	.33	.31
6.0	.51	.42	.35	.49	.41	.34	.45	.38	.33	.42	.36	.31	.38	.33	.29	.27
7.0	.46	.37	.31	.44	.36	.30	.41	.34	.29	.38	.32	.27	.35	.30	.26	.23
8.0	.42	.33	.27	.40	.32	.27	.37	.30	.25	.35	.29	.24	.32	.27	.23	.21
9.0	.38	.30	.24	.37	.29	.24	.34	.28	.23	.32	.26	.22	.30	.24	.21	.19
10.0	.35	.27	.22	.34	.27	.22	.32	.25	.21	.30	.24	.20	.27	.22	.19	.17



C Range: 0 - 360DEG
 C Interval: 22.5DEG
 Test Speed: HIGH
 Temperature:25.3DEG
 Operators:admin Test
 Date:2022-04-15

□ Range: 0 - 180DEG
 □ Interval: 1.0DEG
 Test System:EVERFINE GO-2000B_V1 SYSTEM V2.00.411
 Humidity:65.0%
 Test Distance:8.780m [K=1.0000]
 Remarks:

WEC AND CCEC

Test:U:119.29V I:0.3839A P:41.217W PF:0.8992 Freq:50.00Hz Lamp Flux:3206.32x1 lm		
NAME: ASD Lighting Corp	TYPE:	WEIGHT:
SPEC.:ASD-LFC-DD-20D42-AC-5000K	DIM.:	SERIAL No.:
MFR.: ASD Lighting Corp	SUR.:0.5*0.5	Shielding Angle:

<input type="checkbox"/> cc	80%			70%			50%			30%			10%			0
<input type="checkbox"/> w	50%	30%	10%	50%	30%	10%	50%	30%	10%	50%	30%	10%	50%	30%	10%	0
<input type="checkbox"/> fc	20%			20%			20%			20%			20%			0
RCR	RCR:Room Cavity Ratio						Wall Exitance Coefficients (WEC)									
0.0																
1.0	.353	.201	.064	.340	.194	.062	.316	.181	.058	.294	.169	.054	.273	.158	.051	
2.0	.314	.172	.053	.302	.166	.051	.280	.156	.048	.260	.146	.046	.241	.137	.043	
3.0	.283	.150	.045	.272	.146	.044	.252	.137	.042	.234	.128	.039	.217	.120	.037	
4.0	.257	.133	.039	.247	.129	.038	.229	.122	.036	.212	.114	.034	.197	.107	.033	
5.0	.235	.120	.035	.226	.116	.034	.210	.109	.032	.195	.103	.031	.180	.096	.029	
6.0	.216	.108	.031	.208	.105	.030	.193	.099	.029	.179	.093	.027	.166	.088	.026	
7.0	.200	.099	.028	.193	.096	.027	.179	.091	.026	.166	.085	.025	.154	.080	.024	
8.0	.186	.091	.026	.179	.088	.025	.167	.083	.024	.155	.079	.023	.144	.074	.022	
9.0	.174	.084	.023	.168	.082	.023	.156	.077	.022	.145	.073	.021	.135	.068	.020	
10.0	.163	.078	.022	.157	.076	.021	.147	.072	.020	.136	.068	.019	.127	.064	.018	

<input type="checkbox"/> cc	80%			70%			50%			30%			10%			0
<input type="checkbox"/> w	50%	30%	10%	50%	30%	10%	50%	30%	10%	50%	30%	10%	50%	30%	10%	0
<input type="checkbox"/> fc	20%			20%			20%			20%			20%			0
RCR	RCR:Room Cavity Ratio						Ceiling Cavity Exitance Coefficients (CCEC)									
0.0	.336	.336	.336	.287	.287	.287	.196	.196	.196	.113	.113	.113	.036	.036	.036	
1.0	.330	.302	.278	.282	.260	.239	.193	.179	.165	.111	.103	.096	.036	.033	.031	
2.0	.323	.279	.243	.277	.241	.210	.190	.166	.147	.109	.097	.086	.035	.031	.028	
3.0	.315	.263	.221	.270	.227	.192	.186	.158	.134	.107	.092	.079	.034	.030	.026	
4.0	.308	.250	.206	.264	.216	.179	.182	.151	.126	.105	.088	.075	.034	.029	.025	
5.0	.300	.240	.196	.258	.208	.171	.178	.145	.121	.103	.085	.071	.033	.028	.024	
6.0	.293	.232	.189	.252	.201	.164	.174	.141	.116	.101	.083	.069	.033	.027	.023	
7.0	.286	.226	.184	.246	.196	.160	.170	.137	.113	.099	.081	.067	.032	.026	.022	
8.0	.280	.220	.179	.241	.191	.156	.167	.134	.111	.097	.079	.066	.031	.026	.022	
9.0	.274	.216	.176	.236	.187	.154	.163	.132	.109	.095	.078	.065	.031	.025	.022	
10.0	.268	.211	.174	.231	.184	.152	.160	.129	.108	.094	.076	.064	.030	.025	.021	

C Range: 0 - 360DEG
 C Interval: 22.5DEG
 Test Speed: HIGH
 Temperature:25.3DEG
 Operators:admin Test
 Date:2022-04-15

Range: 0 - 180DEG
 Interval: 1.0DEG
 Test System:EVERFINE GO-2000B_V1 SYSTEM V2.00.411
 Humidity:65.0%
 Test Distance:8.780m [K=1.0000]
 Remarks:

UGR(Unified Glare Rating) Table

Test:U:119.29V I:0.3839A P:41.217W PF:0.8992 Freq:50.00Hz Lamp Flux:3206.32x1 lm										
NAME: ASD Lighting Corp					TYPE:			WEIGHT:		
SPEC.:ASD-LFC-DD-20D42-AC-5000K					DIM.:			SERIAL No.:		
MFR.: ASD Lighting Corp					SUR.:0.5*0.5			Shielding Angle:		
ceiling/cavity	0.7	0.7	0.5	0.5	0.3	0.7	0.7	0.5	0.5	0.3
walls	0.5	0.3	0.5	0.3	0.3	0.5	0.3	0.5	0.3	0.3
working plane	0.2	0.2	0.2	0.2	0.2	0.2	0.2	0.2	0.2	0.2
Room dimensions	Viewed crosswise					Viewed endwise				
x = 2H y = 2H	11.8	13.1	12.3	13.6	14.2	11.7	13.0	12.2	13.6	14.1
3H	13.7	14.9	14.2	15.4	16.1	13.6	14.8	14.1	15.4	16.0
4H	14.6	15.8	15.2	16.3	17.0	14.5	15.7	15.1	16.3	16.9
6H	15.6	16.6	16.1	17.2	17.9	15.5	16.6	16.1	17.2	17.8
8H	16.0	17.1	16.6	17.7	18.4	16.0	17.0	16.6	17.6	18.3
12H	16.6	17.6	17.2	18.2	18.9	16.6	17.6	17.2	18.2	18.9
4H 2H	12.4	13.5	13.0	14.1	14.8	12.4	13.5	12.9	14.1	14.7
3H	14.5	15.5	15.1	16.1	16.8	14.4	15.4	15.1	16.0	16.7
4H	15.6	16.5	16.2	17.1	17.9	15.5	16.5	16.2	17.1	17.8
6H	16.7	17.5	17.4	18.2	18.9	16.7	17.5	17.3	18.1	18.9
8H	17.3	18.1	18.0	18.7	19.5	17.2	18.0	17.9	18.7	19.5
12H	18.0	18.7	18.7	19.4	20.1	17.9	18.6	18.6	19.3	20.1
8H 4H	16.0	16.7	16.6	17.4	18.2	15.9	16.7	16.6	17.4	18.1
6H	17.3	18.0	18.0	18.7	19.5	17.3	17.9	18.0	18.6	19.4
8H	18.1	18.6	18.8	19.4	20.2	18.0	18.6	18.7	19.3	20.1
12H	18.9	19.4	19.7	20.2	21.0	18.9	19.4	19.7	20.1	21.0
12H 4H	16.0	16.7	16.7	17.4	18.2	16.0	16.7	16.7	17.4	18.2
6H	17.5	18.0	18.2	18.7	19.6	17.4	18.0	18.1	18.7	19.5
8H	18.3	18.8	19.0	19.5	20.4	18.3	18.8	19.0	19.5	20.3
Variations with the observer position at spacings:										
S = 1.0H	+ 0.1 / - 0.2					+ 0.1 / - 0.1				
1.5H	+ 0.2 / - 0.3					+ 0.2 / - 0.3				
2.0H	+ 0.2 / - 0.3					+ 0.2 / - 0.4				

CIE Pub.117, 3206 lm Total Lamp Luminous Flux Corrected (8log(F/F0) = 4.0)
 Area: 0.7853 m2

C Range: 0 - 360DEG
 C Interval: 22.5DEG
 Test Speed: HIGH
 Temperature:25.3DEG
 Operators:admin Test
 Date:2022-04-15

Range: 0 - 180DEG
 Interval: 1.0DEG
 Test System:EVERFINE GO-2000B_V1 SYSTEM V2.00.411
 Humidity:65.0%
 Test Distance:8.780m [K=1.0000]
 Remarks:

UTILIZATION FACTORS TABLE

Test:U:119.29V I:0.3839A P:41.217W PF:0.8992 Freq:50.00Hz Lamp Flux:3206.32x1 lm		
NAME: ASD Lighting Corp	TYPE:	WEIGHT:
SPEC.:ASD-LFC-DD-20D42-AC-5000K	DIM.:	SERIAL No.:
MFR.: ASD Lighting Corp	SUR.:0.5*0.5	Shielding Angle:

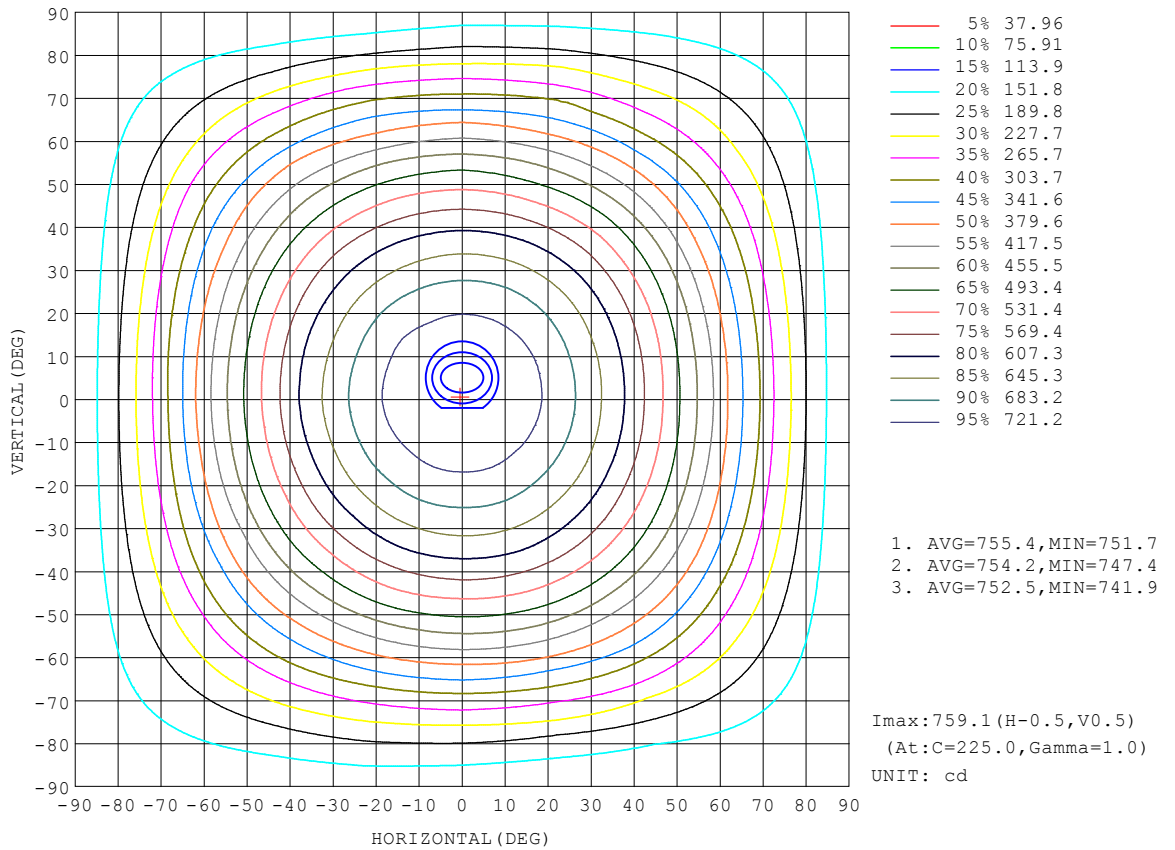
REFLECTANCE										
Ceiling	0.8	0.8	0.8	0.7	0.7	0.7	0.5	0.5	0.5	0
Walls	0.7	0.5	0.3	0.7	0.5	0.3	0.7	0.5	0.3	0
Working plane	0.2	0.2	0.2	0.2	0.2	0.2	0.2	0.2	0.2	0
ROOM INDEX	UTILIZATION FACTORS (PERCENT) $k(RI) \times RCR = 5$									
k = 0.60	49	37	30	48	36	30	46	35	29	22
0.80	58	46	38	57	45	38	54	43	37	29
1.00	66	54	46	64	53	45	61	53	44	35
1.25	73	61	53	71	60	52	66	57	50	41
1.50	78	67	59	76	65	58	71	62	55	45
2.00	86	75	68	82	73	66	77	69	63	51
2.50	90	81	73	87	78	71	80	73	68	55
3.00	94	85	78	90	82	76	83	77	72	58
4.00	98	91	85	94	88	82	87	82	77	63
5.00	101	95	89	97	91	86	89	85	81	65
ROOM INDEX	UF(total)									Direct
According to DIN EN 13032-2 2004			Suspended				SHRNOM = 1.25			

C Range: 0 - 360DEG
 C Interval: 22.5DEG
 Test Speed: HIGH
 Temperature:25.3DEG
 Operators:admin Test
 Date:2022-04-15

Range: 0 - 180DEG
 Interval: 1.0DEG
 Test System:EVERFINE GO-2000B_V1 SYSTEM V2.00.411
 Humidity:65.0%
 Test Distance:8.780m [K=1.0000]
 Remarks:

ISOCANDELA DIAGRAM

Test:U:119.29V I:0.3839A P:41.217W PF:0.8992 Freq:50.00Hz Lamp Flux:3206.32x1 lm		
NAME: ASD Lighting Corp	TYPE:	WEIGHT:
SPEC.:ASD-LFC-DD-20D42-AC-5000K	DIM.:	SERIAL No.:
MFR.: ASD Lighting Corp	SUR.:0.5*0.5	Shielding Angle:

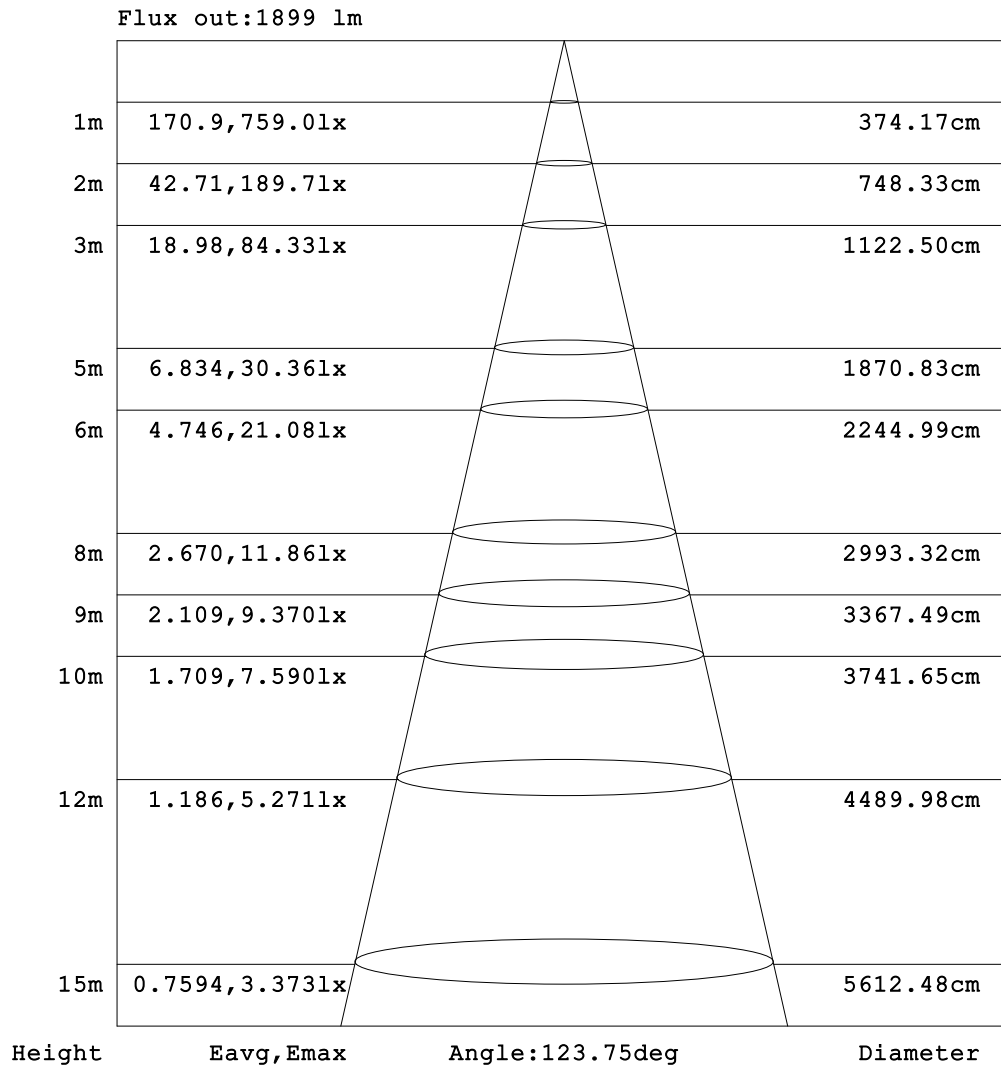


C Range: 0 - 360DEG
 C Interval: 22.5DEG
 Test Speed: HIGH
 Temperature:25.3DEG
 Operators:admin Test
 Date:2022-04-15

Range: 0 - 180DEG
 Interval: 1.0DEG
 Test System:EVERFINE GO-2000B_V1 SYSTEM V2.00.411
 Humidity:65.0%
 Test Distance:8.780m [K=1.0000]
 Remarks:

AAI Figure

Test:U:119.29V I:0.3839A P:41.217W PF:0.8992 Freq:50.00Hz Lamp Flux:3206.32x1 lm		
NAME: ASD Lighting Corp	TYPE:	WEIGHT:
SPEC.:ASD-LFC-DD-20D42-AC-5000K	DIM.:	SERIAL No.:
MFR.: ASD Lighting Corp	SUR.:0.5*0.5	Shielding Angle:



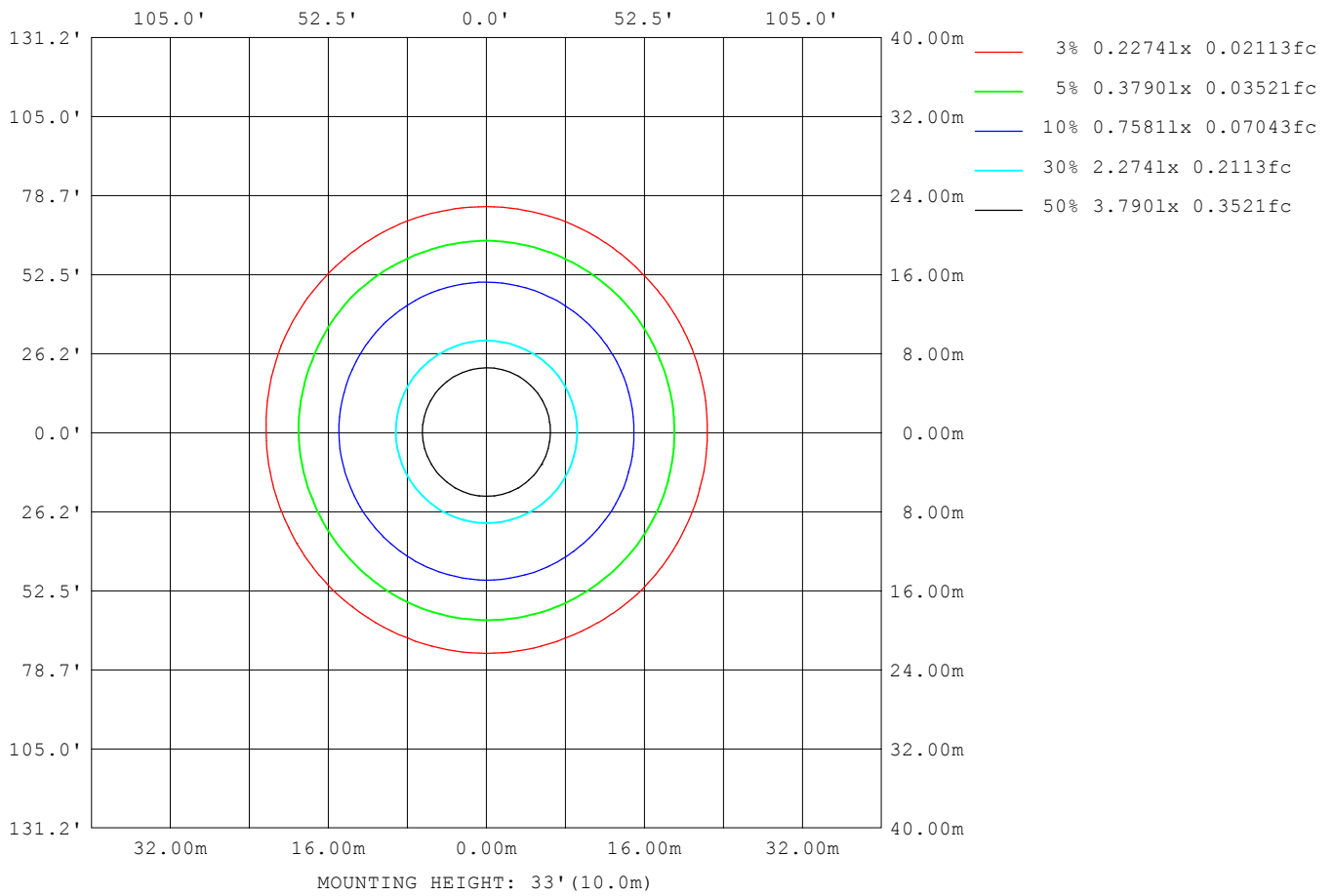
Note:The Curves indicate the illuminated area and the average illumination when the luminaire is at different distance.

C Range: 0 - 360DEG
 C Interval: 22.5DEG
 Test Speed: HIGH
 Temperature:25.3DEG
 Operators:admin Test
 Date:2022-04-15

Range: 0 - 180DEG
 Interval: 1.0DEG
 Test System:EVERFINE GO-2000B_V1 SYSTEM V2.00.411
 Humidity:65.0%
 Test Distance:8.780m [K=1.0000]
 Remarks:

ISOLUX DIAGRAM

Test:U:119.29V I:0.3839A P:41.217W PF:0.8992 Freq:50.00Hz Lamp Flux:3206.32x1 lm		
NAME: ASD Lighting Corp	TYPE:	WEIGHT:
SPEC.:ASD-LFC-DD-20D42-AC-5000K	DIM.:	SERIAL No.:
MFR.: ASD Lighting Corp	SUR.:0.5*0.5	Shielding Angle:



C Range: 0 - 360DEG
 C Interval: 22.5DEG
 Test Speed: HIGH
 Temperature:25.3DEG
 Operators:admin Test
 Date:2022-04-15

Range: 0 - 180DEG
 Interval: 1.0DEG
 Test System:EVERFINE GO-2000B_V1 SYSTEM V2.00.411
 Humidity:65.0%
 Test Distance:8.780m [K=1.0000]
 Remarks:

LED Avg.L Report

Test:U:119.29V I:0.3839A P:41.217W PF:0.8992 Freq:50.00Hz Lamp Flux:3206.32x1 lm		
NAME: ASD Lighting Corp	TYPE:	WEIGHT:
SPEC.:ASD-LFC-DD-20D42-AC-5000K	DIM.:	SERIAL No.:
MFR.: ASD Lighting Corp	SUR.:0.5*0.5	Shielding Angle:

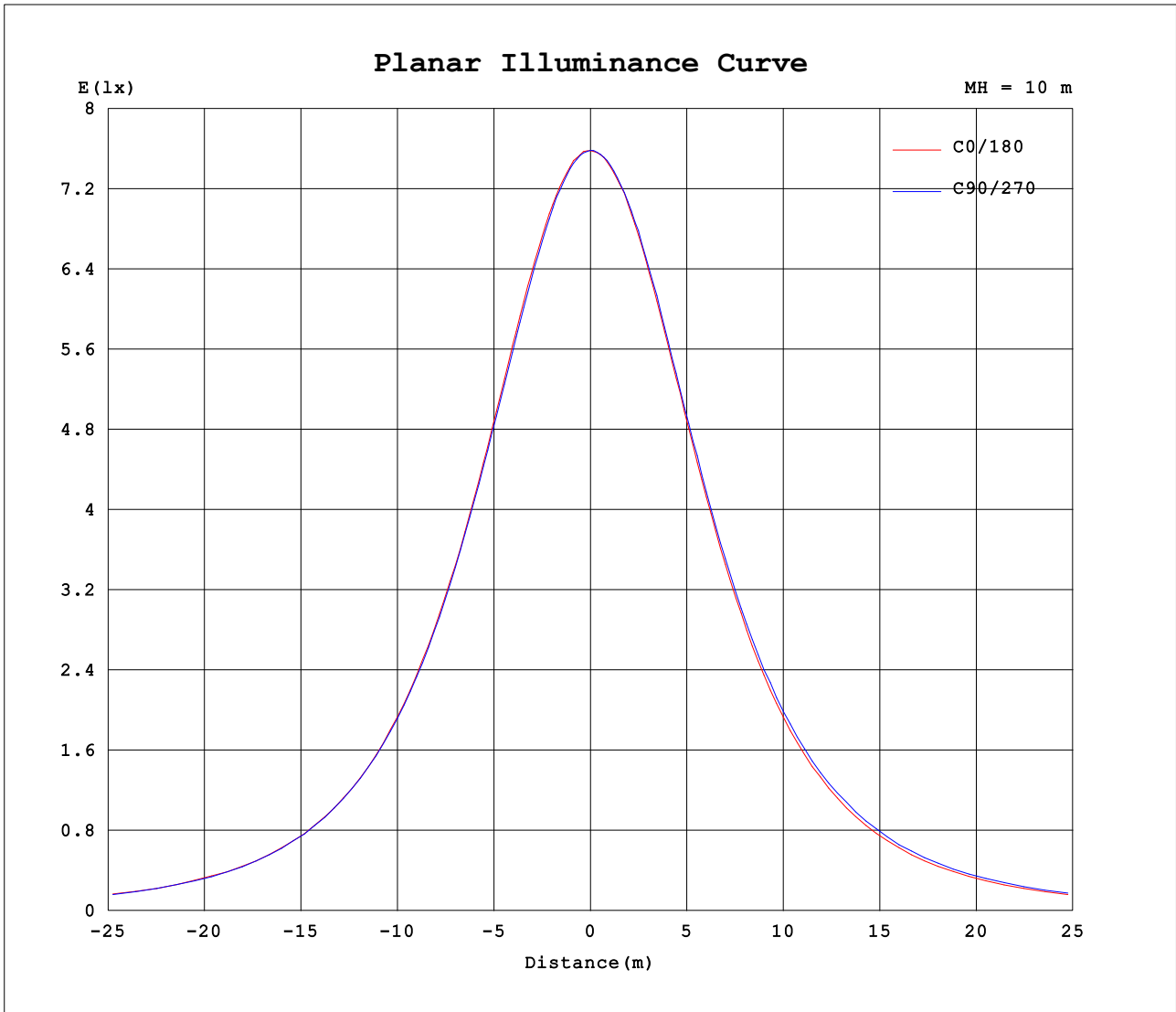
AvgL	cd/m2
L_0~180 (65) av	1034
L_0~180 (75) av	1162
L_0~180 (85) av	2200
L_90~270 (65) av	1079
L_90~270 (75) av	1221
L_90~270 (85) av	2312
L_45 (65) av	1056
L_45 (75) av	1179
L_45 (85) av	2187

Standard: GB/T 29293-2012

C Range: 0 - 360DEG
 C Interval: 22.5DEG
 Test Speed: HIGH
 Temperature:25.3DEG
 Operators:admin Test
 Date:2022-04-15

Range: 0 - 180DEG
 Interval: 1.0DEG
 Test System:EVERFINE GO-2000B_V1 SYSTEM V2.00.411
 Humidity:65.0%
 Test Distance:8.780m [K=1.0000]
 Remarks:

Planar Illuminance Curve



C Range: 0 - 360DEG
 C Interval: 22.5DEG
 Test Speed: HIGH
 Temperature:25.3DEG
 Operators:admin Test
 Date:2022-04-15

Range: 0 - 180DEG
 Interval: 1.0DEG
 Test System:EVERFINE GO-2000B_V1 SYSTEM V2.00.411
 Humidity:65.0%
 Test Distance:8.780m [K=1.0000]
 Remarks:

LUMINOUS DISTRIBUTION INTENSITY DATA

Test:U:119.29V I:0.3839A P:41.217W PF:0.8992 Freq:50.00Hz Lamp Flux:3206.32x1 lm		
NAME: ASD Lighting Corp	TYPE:	WEIGHT:
SPEC.:ASD-LFC-DD-20D42-AC-5000K	DIM.:	SERIAL No.:
MFR.: ASD Lighting Corp	SUR.:0.5*0.5	Shielding Angle:

Table--1

UNIT: cd

C (DEG) □ (DEG)	0	22.5	45	67.5	90	112.5	135	157.5	180	202.5	225	247.5	270	292.5	315	337.5			
0	758	758	759	758	758	758	758	758	758	758	759	758	758	758	758	758			
5	757	755	754	754	754	753	754	755	755	758	757	756	757	756	756	755			
10	747	749	745	744	744	744	744	745	749	749	748	749	750	749	749	747			
15	733	734	729	729	728	729	728	731	735	737	736	736	738	738	737	735			
20	715	711	712	710	708	709	709	711	715	717	720	718	720	720	719	717			
25	690	688	686	686	684	685	684	688	693	692	698	695	697	698	697	693			
30	661	659	656	658	656	655	654	656	662	662	667	667	670	670	669	666			
35	627	626	624	625	623	623	619	622	628	630	636	635	639	638	636	632			
40	588	588	586	587	584	582	582	582	588	593	599	600	602	601	599	593			
45	547	547	547	545	543	541	539	539	547	551	558	562	562	560	560	553			
50	500	502	503	501	497	497	491	494	503	506	513	520	519	515	514	505			
55	452	453	450	451	450	446	441	444	451	457	466	470	474	467	467	458			
60	399	399	398	401	399	398	389	390	399	406	415	419	424	418	411	403			
65	345	346	346	339	345	341	336	334	341	352	365	366	371	364	355	347			
70	296	288	289	285	287	286	285	280	285	299	303	315	319	310	297	294			
75	239	235	229	238	236	237	236	237	234	239	247	252	260	255	247	242			
80	190	184	179	181	189	192	187	187	188	189	190	199	211	207	201	196			
85	150	145	140	145	152	155	151	150	151	149	148	154	164	164	160	155			
90	123	120	120	125	130	131	125	124	126	124	122	126	135	135	132	127			
95	108	109	113	117	119	117	110	109	111	112	111	113	118	117	113	109			
100	102	106	111	115	115	110	102	101	105	109	109	110	111	107	102	99.8			
105	100	105	110	115	114	107	97.6	99.2	104	108	108	109	109	103	96.8	96.1			
110	100	103	108	113	112	105	95.9	97.8	105	108	107	108	107	102	94.3	95.1			
115	96.7	99.9	106	111	111	103	95.3	90.8	101	103	106	106	106	101	92.8	92.7			
120	89.9	96.7	104	109	108	101	94.8	87.6	96.0	99.0	105	105	104	99.8	92.0	86.5			
125	89.3	93.6	102	106	105	99.5	91.3	86.8	95.8	97.6	103	102	102	97.9	90.4	81.3			
130	88.3	90.9	96.9	103	102	97.4	85.0	86.3	94.9	95.9	98.2	99.7	99.9	95.0	86.7	77.8			
135	87.2	88.0	91.3	99.8	99.5	94.7	83.5	85.1	93.6	93.6	93.3	96.1	97.3	92.3	82.5	75.1			
140	85.6	83.3	86.6	94.0	96.8	89.1	83.0	84.9	91.6	91.8	90.3	89.8	93.9	86.5	77.4	72.5			
145	83.1	81.3	83.3	87.9	93.6	85.3	83.1	85.6	90.7	88.9	87.2	83.6	88.6	79.3	72.9	70.7			
150	80.3	80.1	81.7	85.1	88.4	84.5	83.7	82.0	89.5	85.0	84.7	83.7	83.3	76.3	70.1	70.5			
155	77.6	78.1	79.3	81.9	84.8	84.0	80.7	79.3	87.5	80.6	80.3	81.9	80.5	75.1	69.1	69.7			
160	75.3	76.9	77.3	79.9	82.6	83.0	76.2	75.3	84.4	75.9	76.0	79.4	77.7	74.3	70.0	70.0			
165	73.2	74.2	76.2	77.9	81.1	79.1	72.0	72.4	83.4	73.5	71.8	75.3	75.3	72.0	71.3	70.7			
170	76.3	78.6	82.6	80.8	81.6	75.4	73.2	75.2	85.8	80.8	79.0	71.9	72.9	73.1	78.4	77.4			
175	79.6	83.4	84.6	83.1	82.9	77.7	75.6	83.1	86.8	86.3	81.7	80.8	75.9	73.2	80.4	85.0			
180	86.1	87.4	88.0	83.9	84.0	77.2	81.8	87.3	86.2	87.5	88.0	84.0	84.2	77.3	81.8	87.2			

C Range: 0 - 360DEG
 C Interval: 22.5DEG
 Test Speed: HIGH
 Temperature:25.3DEG
 Operators:admin Test
 Date:2022-04-15

□ Range: 0 - 180DEG
 □ Interval: 1.0DEG
 Test System:EVERFINE GO-2000B_V1 SYSTEM V2.00.411
 Humidity:65.0%
 Test Distance:8.780m [K=1.0000]
 Remarks: