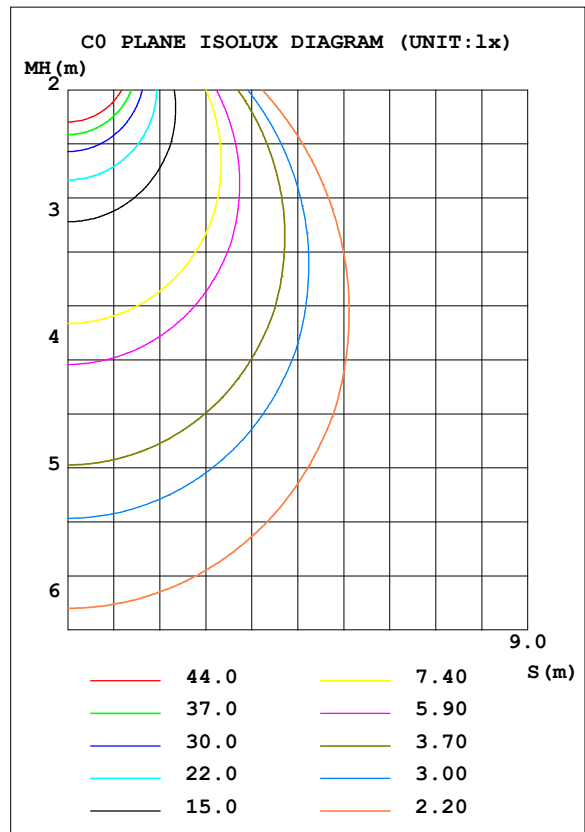
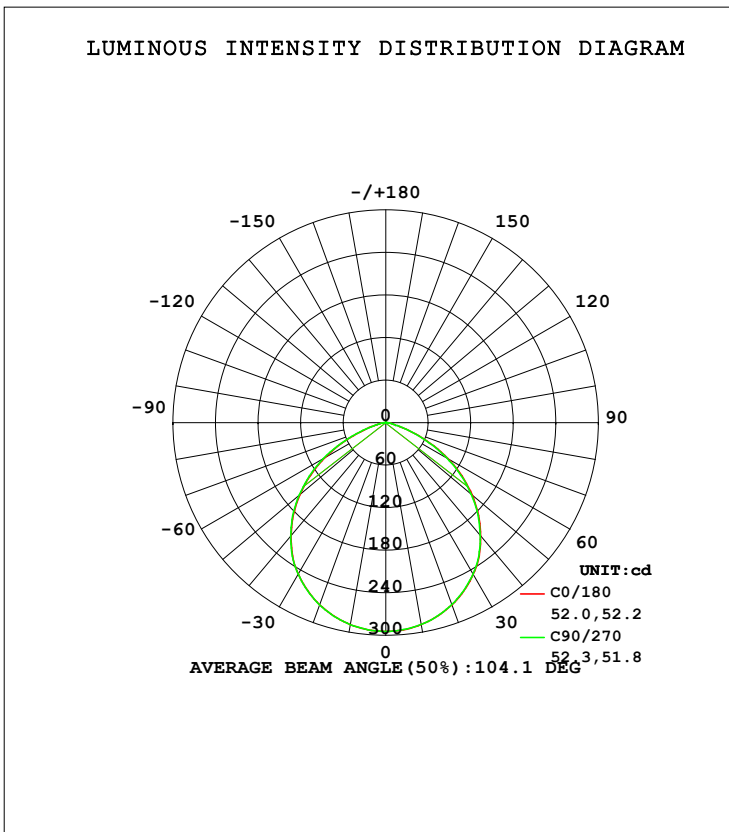


LUMINAIRE PHOTOMETRIC TEST REPORT

Test:U:120.1V I:0.0806A P:9.639W PF:0.9956 Freq:60.01Hz Lamp Flux:740.204x1 lm		
NAME: ASD-LDLOBS-4D1040-WH	TYPE:	WEIGHT:
SPEC.:	DIM.:	SERIAL No.:
MFR.: ASD Lighting Corp	SUR.:	Shielding Angle:

DATA OF LAMP		PHOTOMETRIC DATA Eff: 76.79 lm/W			
MODEL	ASD-LDLOBS-4D1040-WH	Imax (cd)	294.5	S/MH (C0/180)	1.25
NOMINAL POWER (W)	10	LOR (%)	100.0	S/MH (C90/270)	1.25
RATED VOLTAGE (V)	120	TOTAL FLUX (lm)	740.20	η UP, DN (C0-180)	0.1, 49.8
NOMINAL FLUX (lm)	740.204	CIE CLASS	DIRECT	η UP, DN (C180-360)	0.1, 50.1
LAMPS INSIDE	1	η up (%)	0.1	CIBSE SHR NOM	1.25
TEST VOLTAGE (V)	120.0	η down (%)	99.9	CIBSE SHR MAX	1.35



C Range: 0 - 360DEG
C Interval: 22.5DEG
Test Speed: HIGH
Temperature: 25.3DEG
Operators: Nick
Test Date: 19 November 2018

γ Range: 0 - 180DEG
 γ Interval: 1.0DEG
Test System: EVERFINE GO-R5000_V2 SYSTEM V2.0.353
Humidity: 51.4%
Test Distance: 1.861m [K=1.0000]
Remarks:

ZONAL FLUX DIAGRAM

ZONAL FLUX DIAGRAM:

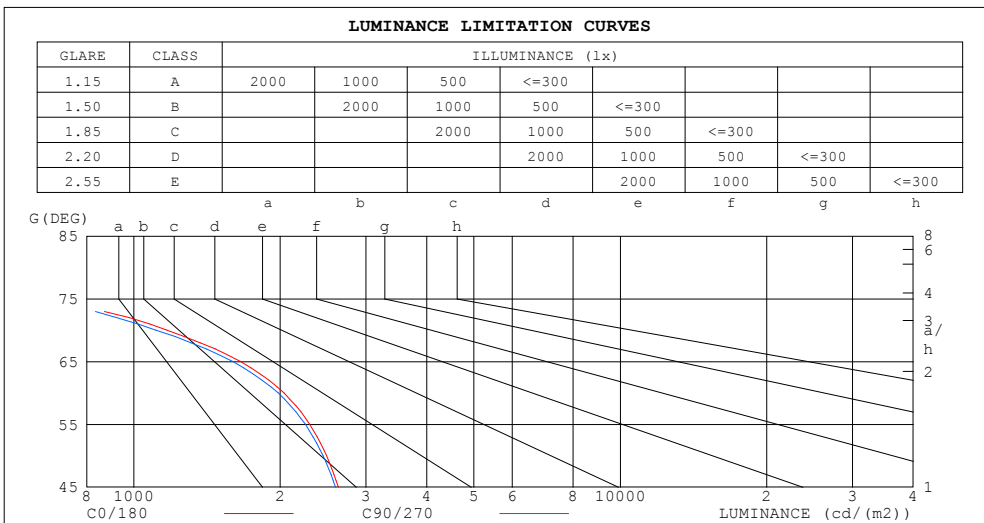
γ	C0	C45	C90	C135	C180	C225	C270	C315	γ	Φ zone	Φ total	%lum, lamp
10	289.0	289.1	288.9	288.8	289.1	289.1	289.1	289.2	0- 10	27.84	27.84	3.76,3.76
20	273.4	273.4	273.0	272.9	273.2	273.4	273.4	273.9	10- 20	79.69	107.5	14.5,14.5
30	246.9	248.2	246.3	247.4	246.6	248.2	247.1	249.0	20- 30	120.5	228.0	30.8,30.8
40	208.3	213.7	207.3	212.6	207.8	213.8	208.6	214.7	30- 40	144.1	372.1	50.3,50.3
50	159.2	167.0	157.6	165.3	158.1	166.9	159.7	168.4	40- 50	144.9	517.1	69.9,69.9
60	101.2	110.6	99.08	108.3	99.62	110.5	101.8	112.6	50- 60	120.8	637.9	86.2,86.2
70	39.77	48.25	37.98	45.78	38.37	47.64	39.84	49.78	60- 70	73.70	711.6	96.1,96.1
80	8.772	9.093	8.623	8.631	8.533	9.175	8.675	9.638	70- 80	23.27	734.8	99.3,99.3
90	0.2841	0.6179	0.4270	0.5507	0.2857	0.5193	0.3379	0.7036	80- 90	4.354	739.2	99.9,99.9
100	0.0605	0.3587	0.3185	0.3658	0.1055	0.2684	0.1358	0.2750	90-100	0.4196	739.6	99.9,99.9
110	0.0510	0.1605	0.1266	0.1514	0.0605	0.1240	0.0846	0.1536	100-110	0.1665	739.8	99.9,99.9
120	0.0560	0.1127	0.0978	0.0956	0.0560	0.0917	0.0773	0.1050	110-120	0.0961	739.9	100,100
130	0.0773	0.0874	0.0882	0.0725	0.0577	0.0689	0.0856	0.0903	120-130	0.0724	740.0	100,100
140	0.0566	0.0777	0.0827	0.0602	0.0593	0.1726	0.1987	0.1303	130-140	0.0639	740.0	100,100
150	0.0792	0.0739	0.0837	0.0510	0.2460	0.1143	0.1741	0.1380	140-150	0.0732	740.1	100,100
160	0.0426	0.0786	0.0676	0.1076	0.2842	0.1918	0.1535	0.1402	150-160	0.0633	740.2	100,100
170	0.0281	0.0650	0.0716	0.0507	0.1043	0.2466	0.0429	0.2155	160-170	0.0383	740.2	100,100
180	0	0	0	0	0	0	0	0	170-180	0.0068	740.2	100,100
DEG	LUMINOUS INTENSITY:cd									UNIT:lm		

C Range: 0 - 360DEG
 C Interval: 22.5DEG
 Test Speed: HIGH
 Temperature: 25.3DEG
 Operators:Nick
 Test Date:19 November 2018

γ Range: 0 - 180DEG
 γ Interval: 1.0DEG
 Test System:EVERFINE GO-R5000_V2 SYSTEM V2.0.353
 Humidity: 51.4%
 Test Distance:1.861m [K=1.0000]
 Remarks:

LUMINANCE LIMITATION CURVES

Test:U:120.1V I:0.0806A P:9.639W PF:0.9956 Freq:60.01Hz Lamp Flux:740.204x1 lm		
NAME: ASD-LDLOBS-4D1040-WH	TYPE:	WEIGHT:
SPEC.:	DIM.:	SERIAL No.:
MFR.: ASD Lighting Corp	SUR.:	Shielding Angle:



LUMINANCE cd/(m2)		
G (DEG)	C0/180	C90/270
85	436	434
80	508	496
75	695	668
70	1169	1110
65	1657	1597
60	2035	1980
55	2300	2252
50	2489	2449
45	2633	2599

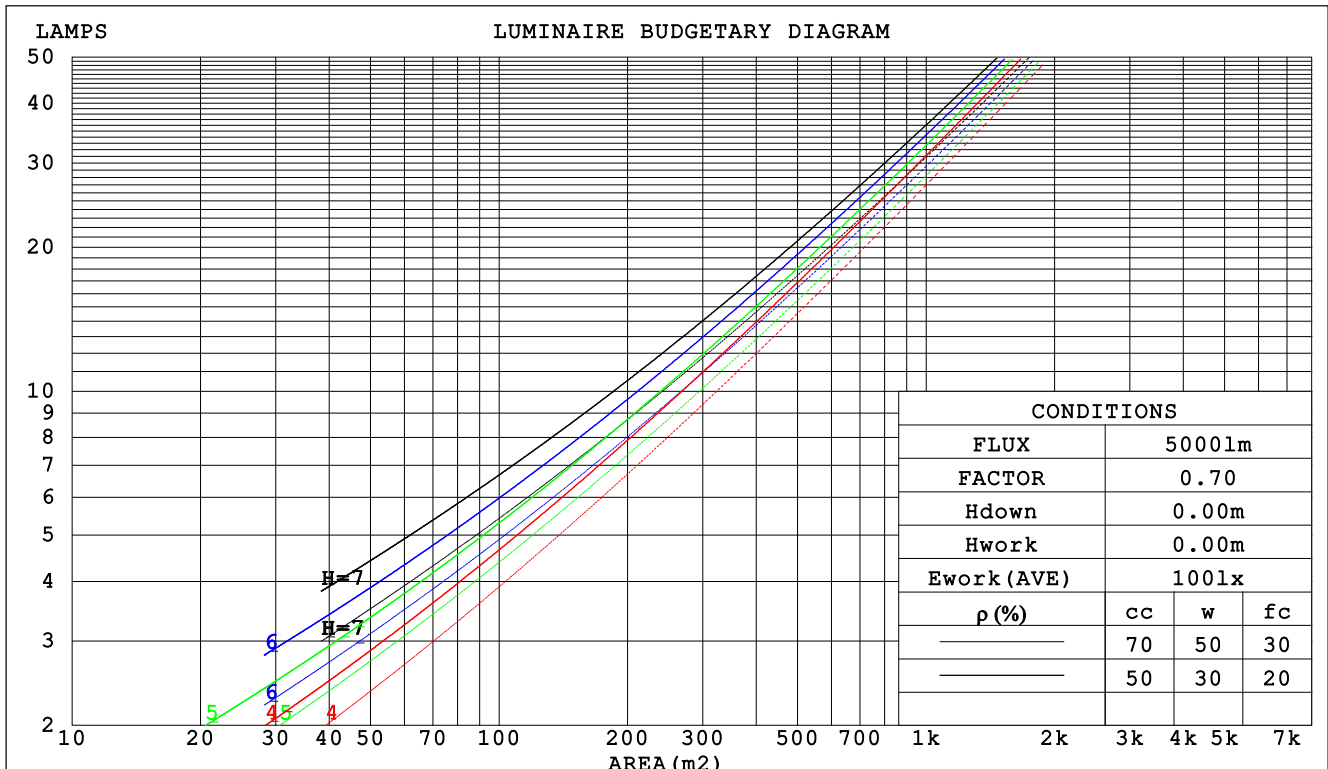
C Range: 0 - 360DEG
 C Interval: 22.5DEG
 Test Speed: HIGH
 Temperature: 25.3DEG
 Operators: Nick
 Test Date: 19 November 2018

γ Range: 0 - 180DEG
 γ Interval: 1.0DEG
 Test System: EVERFINE GO-R5000_V2 SYSTEM V2.0.353
 Humidity: 51.4%
 Test Distance: 1.861m [K=1.0000]
 Remarks:

CU AND LUMINAIRE BUDGETARY ESTIMATE DIAGRAM

Test:U:120.1V I:0.0806A P:9.639W PF:0.9956 Freq:60.01Hz Lamp Flux:740.204x1 lm		
NAME: ASD-LDLOBS-4D1040-WH	TYPE:	WEIGHT:
SPEC.:	DIM.:	SERIAL No.:
MFR.: ASD Lighting Corp	SUR.:	Shielding Angle:

ρcc	80%			70%			50%			30%			10%			0
ρw	50%	30%	10%	50%	30%	10%	50%	30%	10%	50%	30%	10%	50%	30%	10%	0
ρfc	20%			20%			20%			20%			20%			0
RCR	RCR:Room Cavity Ratio															
	Coefficients of Utilization(CU)															
0.0	1.19	1.19	1.19	1.16	1.16	1.16	1.11	1.11	1.11	1.06	1.06	1.06	1.02	1.02	1.02	.00
1.0	1.06	1.02	.99	1.04	1.00	.97	.99	.97	.94	.96	.93	.91	.92	.90	.88	.86
2.0	.93	.87	.82	.92	.86	.81	.88	.83	.79	.85	.81	.77	.82	.79	.76	.74
3.0	.83	.75	.69	.81	.74	.69	.78	.72	.67	.76	.71	.66	.73	.69	.65	.63
4.0	.74	.66	.59	.72	.65	.59	.70	.63	.58	.68	.62	.57	.66	.61	.56	.54
5.0	.66	.58	.51	.65	.57	.51	.63	.56	.50	.61	.55	.50	.59	.54	.49	.47
6.0	.60	.51	.45	.59	.51	.45	.57	.50	.44	.55	.49	.44	.54	.48	.44	.42
7.0	.54	.46	.40	.53	.45	.40	.52	.45	.39	.50	.44	.39	.49	.43	.39	.37
8.0	.50	.41	.36	.49	.41	.36	.48	.40	.35	.46	.40	.35	.45	.39	.35	.33
9.0	.46	.38	.32	.45	.37	.32	.44	.37	.32	.43	.36	.32	.42	.36	.32	.30
10.0	.42	.34	.29	.41	.34	.29	.41	.34	.29	.40	.33	.29	.39	.33	.29	.27



C Range: 0 - 360DEG
C Interval: 22.5DEG
Test Speed: HIGH
Temperature: 25.3DEG
Operators: Nick
Test Date: 19 November 2018

γ Range: 0 - 180DEG
γ Interval: 1.0DEG
Test System: EVERFINE GO-R5000_V2 SYSTEM V2.0.353
Humidity: 51.4%
Test Distance: 1.861m [K=1.0000]
Remarks:

WEC AND CCEC

Test:U:120.1V I:0.0806A P:9.639W PF:0.9956 Freq:60.01Hz Lamp Flux:740.204x1 lm		
NAME: ASD-LDLOBS-4D1040-WH	TYPE:	WEIGHT:
SPEC.:	DIM.:	SERIAL No.:
MFR.: ASD Lighting Corp	SUR.:	Shielding Angle:

ρ_{cc}	80%			70%			50%			30%			10%			0
ρ_w	50%	30%	10%	50%	30%	10%	50%	30%	10%	50%	30%	10%	50%	30%	10%	0
ρ_{fc}	20%			20%			20%			20%			20%			0
RCR	RCR:Room Cavity Ratio						Wall Exitance Coefficients (WEC)									
0.0																
1.0	.270	.154	.049	.263	.150	.048	.250	.143	.046	.238	.137	.044	.227	.131	.042	
2.0	.262	.144	.044	.256	.141	.043	.244	.136	.042	.234	.131	.041	.224	.127	.040	
3.0	.248	.132	.039	.242	.130	.039	.232	.126	.038	.223	.122	.037	.214	.119	.037	
4.0	.232	.121	.035	.227	.119	.035	.218	.116	.035	.210	.113	.034	.202	.110	.033	
5.0	.217	.111	.032	.213	.109	.032	.205	.107	.031	.197	.104	.031	.190	.102	.031	
6.0	.203	.102	.029	.199	.101	.029	.192	.098	.029	.186	.096	.028	.179	.094	.028	
7.0	.190	.094	.027	.187	.093	.027	.181	.091	.026	.175	.090	.026	.169	.088	.026	
8.0	.179	.087	.025	.176	.087	.024	.170	.085	.024	.165	.083	.024	.160	.082	.024	
9.0	.168	.081	.023	.166	.081	.023	.160	.079	.022	.156	.078	.022	.151	.077	.022	
10.0	.159	.076	.021	.156	.075	.021	.152	.074	.021	.147	.073	.021	.143	.072	.021	

ρ_{cc}	80%			70%			50%			30%			10%			0
ρ_w	50%	30%	10%	50%	30%	10%	50%	30%	10%	50%	30%	10%	50%	30%	10%	0
ρ_{fc}	20%			20%			20%			20%			20%			0
RCR	RCR:Room Cavity Ratio						Ceiling Cavity Exitance Coefficients (CCEC)									
0.0	.192	.192	.192	.164	.164	.164	.112	.112	.112	.064	.064	.064	.021	.021	.021	
1.0	.179	.158	.139	.153	.135	.119	.105	.093	.082	.060	.054	.048	.019	.017	.016	
2.0	.169	.133	.103	.145	.115	.089	.099	.079	.062	.057	.046	.036	.018	.015	.012	
3.0	.161	.115	.079	.138	.099	.068	.095	.069	.048	.055	.040	.028	.018	.013	.009	
4.0	.154	.102	.062	.132	.088	.054	.091	.061	.038	.052	.036	.022	.017	.012	.007	
5.0	.147	.091	.050	.126	.079	.044	.087	.055	.031	.050	.032	.018	.016	.011	.006	
6.0	.140	.083	.042	.120	.072	.036	.083	.050	.026	.048	.029	.015	.016	.010	.005	
7.0	.133	.076	.035	.115	.066	.031	.079	.046	.022	.046	.027	.013	.015	.009	.004	
8.0	.127	.070	.031	.109	.061	.027	.076	.043	.019	.044	.025	.011	.014	.008	.004	
9.0	.121	.065	.027	.105	.056	.024	.072	.040	.017	.042	.023	.010	.014	.008	.003	
10.0	.116	.061	.024	.100	.053	.021	.069	.037	.015	.040	.022	.009	.013	.007	.003	

C Range: 0 - 360DEG
 C Interval: 22.5DEG
 Test Speed: HIGH
 Temperature: 25.3DEG
 Operators: Nick
 Test Date: 19 November 2018

γ Range: 0 - 180DEG
 γ Interval: 1.0DEG
 Test System: EVERFINE GO-R5000_V2 SYSTEM V2.0.353
 Humidity: 51.4%
 Test Distance: 1.861m [K=1.0000]
 Remarks:

UGR(Unified Glare Rating) Table

Test:U:120.1V I:0.0806A P:9.639W PF:0.9956 Freq:60.01Hz Lamp Flux:740.204x1 lm		
NAME: ASD-LDLOBS-4D1040-WH	TYPE:	WEIGHT:
SPEC.:	DIM.:	SERIAL No.:
MFR.: ASD Lighting Corp	SUR.:	Shielding Angle:

ceiling/cavity	0.7	0.7	0.5	0.5	0.3	0.7	0.7	0.5	0.5	0.3
walls	0.5	0.3	0.5	0.3	0.3	0.5	0.3	0.5	0.3	0.3
working plane	0.2	0.2	0.2	0.2	0.2	0.2	0.2	0.2	0.2	0.2
Room dimensions	Viewed crosswise					Viewed endwise				
x = 2H y = 2H	15.8	17.2	16.0	17.4	17.6	15.7	17.1	16.0	17.3	17.5
3H	16.5	17.8	16.8	18.0	18.3	16.4	17.7	16.7	17.9	18.1
4H	16.6	17.8	16.9	18.0	18.3	16.4	17.7	16.7	17.9	18.2
6H	16.5	17.7	16.9	18.0	18.2	16.4	17.6	16.7	17.8	18.1
8H	16.5	17.6	16.8	17.9	18.2	16.4	17.5	16.7	17.8	18.1
12H	16.5	17.6	16.8	17.8	18.1	16.3	17.4	16.7	17.7	18.0
4H 2H	16.2	17.5	16.5	17.7	18.0	16.2	17.4	16.5	17.7	17.9
3H	17.0	18.1	17.4	18.4	18.7	16.9	18.0	17.3	18.3	18.6
4H	17.2	18.1	17.5	18.5	18.8	17.1	18.0	17.4	18.4	18.7
6H	17.2	18.0	17.6	18.4	18.8	17.1	17.9	17.5	18.3	18.7
8H	17.2	18.0	17.6	18.3	18.7	17.1	17.9	17.5	18.2	18.6
12H	17.2	17.9	17.6	18.3	18.7	17.1	17.8	17.5	18.2	18.6
4H	17.2	18.0	17.6	18.3	18.7	17.1	17.9	17.5	18.2	18.6
6H	17.2	17.9	17.7	18.3	18.7	17.1	17.8	17.6	18.2	18.6
8H	17.3	17.8	17.7	18.3	18.7	17.1	17.7	17.6	18.2	18.6
12H	17.3	17.8	17.7	18.2	18.7	17.2	17.7	17.6	18.1	18.6
8H 4H	17.1	17.9	17.6	18.3	18.7	17.0	17.8	17.5	18.1	18.6
6H	17.2	17.8	17.7	18.2	18.7	17.1	17.7	17.6	18.1	18.6
8H	17.2	17.7	17.7	18.2	18.7	17.1	17.6	17.6	18.1	18.6
Variations with the observer position at spacings:										
S = 1.0H	+ 0.4 / - 0.5					+ 0.4 / - 0.5				
1.2H	+ 0.3 / - 0.6					+ 0.3 / - 0.6				
2.0H	+ 0.5 / - 0.7					+ 0.5 / - 0.8				

12H 4H
CIE Pub.117 Corrected 740.2 lm Total Lamp Luminous Flux. (8log(F/F0) = -1.0)

8H

C Range: 0 - 360DEG
C Interval: 22.5DEG
Test Speed: HIGH
Temperature: 25.3DEG
Operators: Nick
Test Date: 19 November 2018

γ Range: 0 - 180DEG
γ Interval: 1.0DEG
Test System: EVERFINE GO-R5000_V2 SYSTEM V2.0.353
Humidity: 51.4%
Test Distance: 1.861m [K=1.0000]
Remarks:

UTILIZATION FACTORS TABLE

Test:U:120.1V I:0.0806A P:9.639W PF:0.9956 Freq:60.01Hz Lamp Flux:740.204x1 lm		
NAME: ASD-LDLOBS-4D1040-WH	TYPE:	WEIGHT:
SPEC.:	DIM.:	SERIAL No.:
MFR.: ASD Lighting Corp	SUR.:	Shielding Angle:

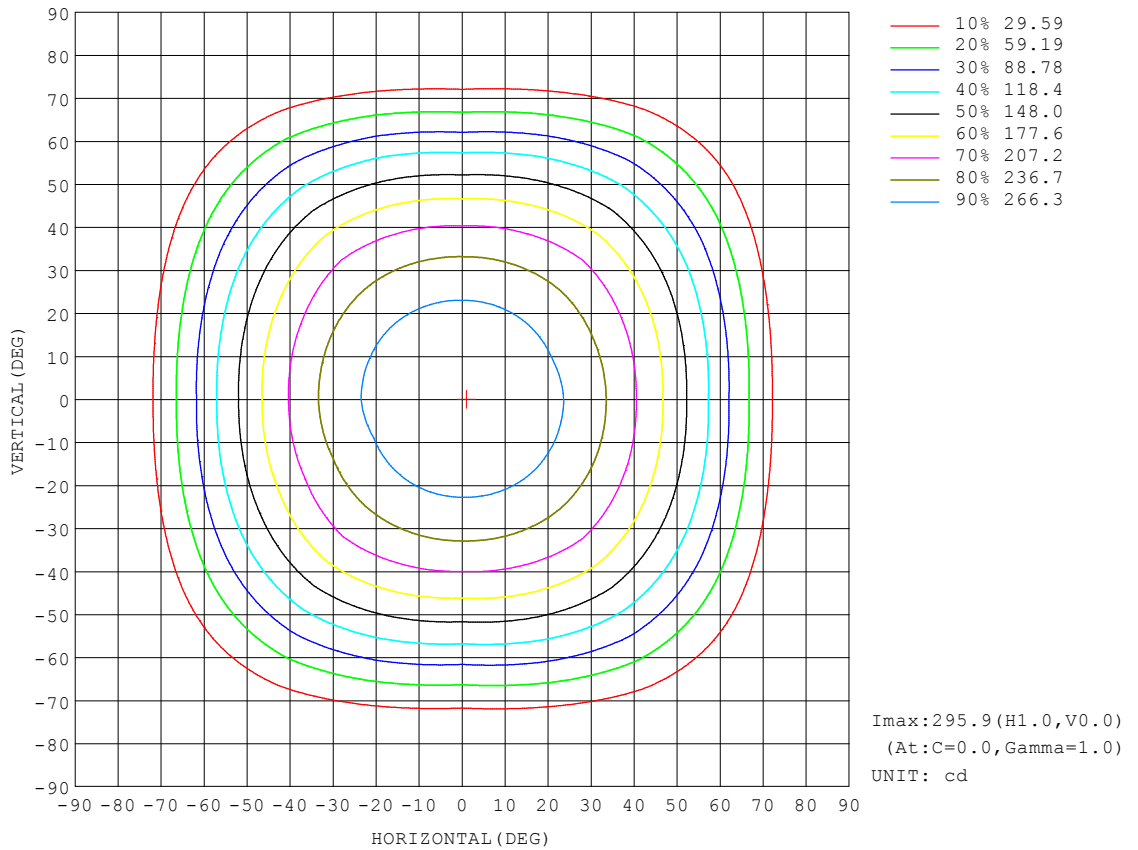
REFLECTANCE										
Ceiling	0.8	0.8	0.8	0.7	0.7	0.7	0.5	0.5	0.5	0
Walls	0.7	0.5	0.3	0.7	0.5	0.3	0.7	0.5	0.3	0
Working plane	0.2	0.2	0.2	0.2	0.2	0.2	0.2	0.2	0.2	0
ROOM INDEX	UTILIZATION FACTORS (PERCENT) $k(RI) \times RCR = 5$									
k = 0.60	60	49	43	60	49	42	58	48	42	36
0.80	71	60	53	70	59	53	68	59	52	46
1.00	79	69	62	78	69	62	76	70	62	55
1.25	87	77	70	85	76	70	83	75	69	62
1.50	91	82	76	90	82	76	87	80	75	68
2.00	98	90	85	96	89	84	93	87	82	75
2.50	101	94	89	99	93	88	96	91	86	79
3.00	104	98	94	102	97	92	98	94	90	82
4.00	108	103	99	106	101	98	102	98	95	86
5.00	110	106	102	108	104	101	103	100	98	89
ROOM INDEX	UF(total)									Direct
According to DIN EN 13032-2 2004			Suspended				SHRNOM = 1.25			

C Range: 0 - 360DEG
 C Interval: 22.5DEG
 Test Speed: HIGH
 Temperature: 25.3DEG
 Operators: Nick
 Test Date: 19 November 2018

γ Range: 0 - 180DEG
 γ Interval: 1.0DEG
 Test System: EVERFINE GO-R5000_V2 SYSTEM V2.0.353
 Humidity: 51.4%
 Test Distance: 1.861m [K=1.0000]
 Remarks:

ISOCANDELA DIAGRAM

Test:U:120.1V I:0.0806A P:9.639W PF:0.9956 Freq:60.01Hz Lamp Flux:740.204x1 lm		
NAME: ASD-LDLOBS-4D1040-WH	TYPE:	WEIGHT:
SPEC.:	DIM.:	SERIAL No.:
MFR.: ASD Lighting Corp	SUR.:	Shielding Angle:

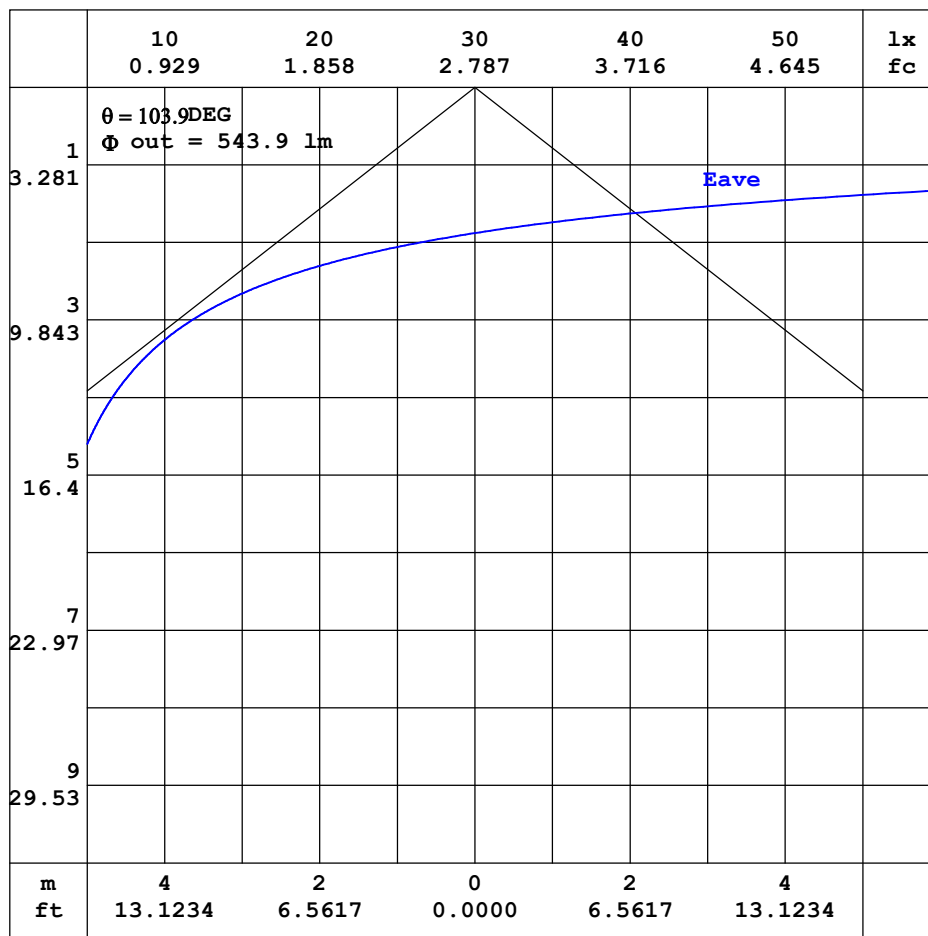


C Range: 0 - 360DEG
 C Interval: 22.5DEG
 Test Speed: HIGH
 Temperature: 25.3DEG
 Operators:Nick
 Test Date:19 November 2018

γ Range: 0 - 180DEG
 γ Interval: 1.0DEG
 Test System:EVERFINE GO-R5000_V2 SYSTEM V2.0.353
 Humidity: 51.4%
 Test Distance:1.861m [K=1.0000]
 Remarks:

AAI CURVES

Test:U:120.1V I:0.0806A P:9.639W PF:0.9956 Freq:60.01Hz Lamp Flux:740.204x1 lm		
NAME: ASD-LDLOBS-4D1040-WH	TYPE:	WEIGHT:
SPEC.:	DIM.:	SERIAL No.:
MFR.: ASD Lighting Corp	SUR.:	Shielding Angle:



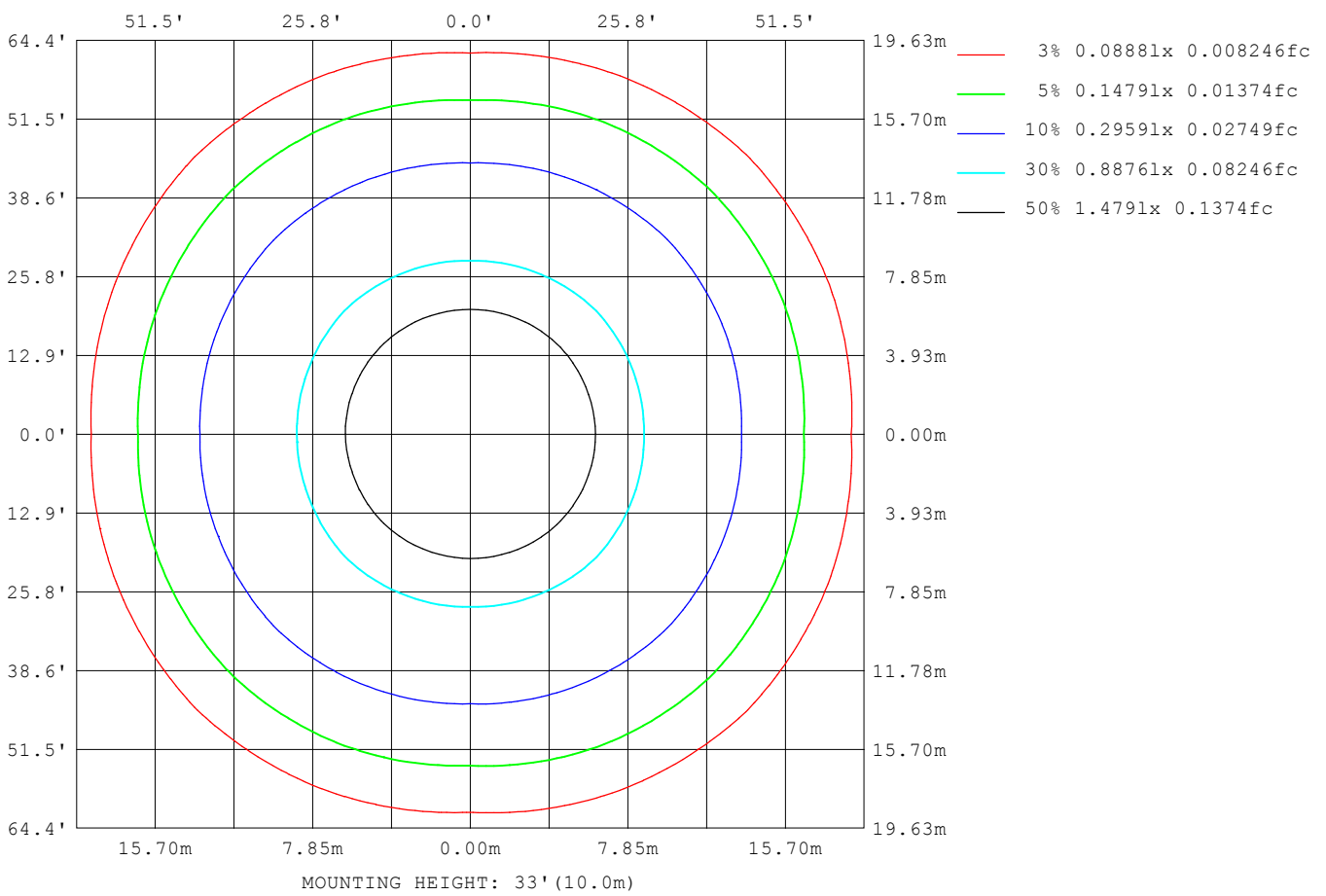
Note: The Curves indicate the illuminated area and the average illumination when the luminaire is at different distance.

C Range: 0 - 360DEG
 C Interval: 22.5DEG
 Test Speed: HIGH
 Temperature: 25.3DEG
 Operators: Nick
 Test Date: 19 November 2018

γ Range: 0 - 180DEG
 γ Interval: 1.0DEG
 Test System: EVERFINE GO-R5000_V2 SYSTEM V2.0.353
 Humidity: 51.4%
 Test Distance: 1.861m [K=1.0000]
 Remarks:

ISOLUX DIAGRAM

Test:U:120.1V I:0.0806A P:9.639W PF:0.9956 Freq:60.01Hz Lamp Flux:740.204x1 lm		
NAME: ASD-LDLOBS-4D1040-WH	TYPE:	WEIGHT:
SPEC.:	DIM.:	SERIAL No.:
MFR.: ASD Lighting Corp	SUR.:	Shielding Angle:



C Range: 0 - 360DEG
C Interval: 22.5DEG
Test Speed: HIGH
Temperature: 25.3DEG
Operators: Nick
Test Date: 19 November 2018

γ Range: 0 - 180DEG
γ Interval: 1.0DEG
Test System: EVERFINE GO-R5000_V2 SYSTEM V2.0.353
Humidity: 51.4%
Test Distance: 1.861m [K=1.0000]
Remarks:

LED Avg.L Report

Test:U:120.1V I:0.0806A P:9.639W PF:0.9956 Freq:60.01Hz Lamp Flux:740.204x1 lm		
NAME: ASD-LDLOBS-4D1040-WH	TYPE:	WEIGHT:
SPEC.:	DIM.:	SERIAL No.:
MFR.: ASD Lighting Corp	SUR.:	Shielding Angle:

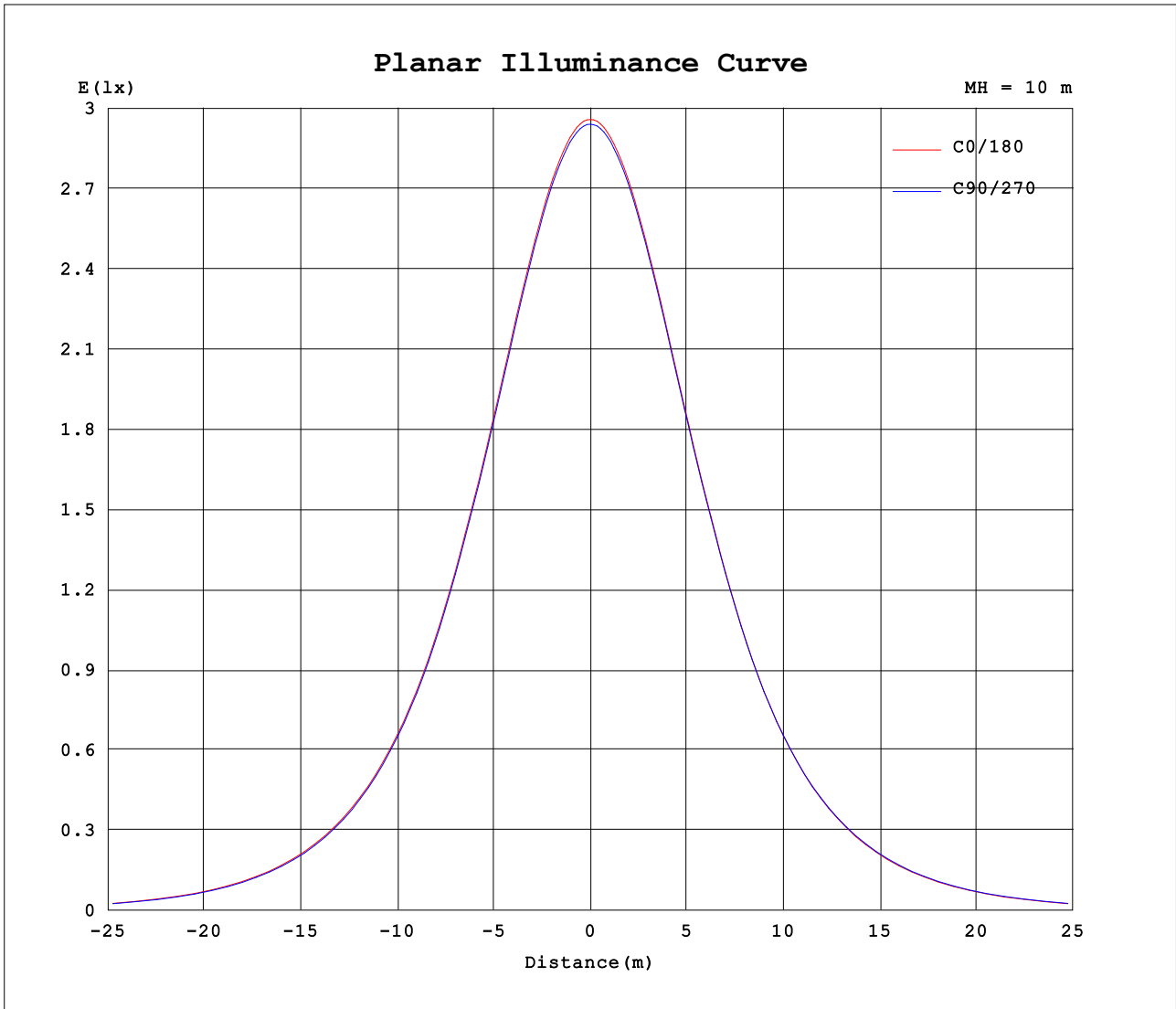
AvgL	cd/m2
L_0~180 (65) av	1626
L_0~180 (75) av	683
L_0~180 (85) av	419
L_90~270 (65) av	1626
L_90~270 (75) av	680
L_90~270 (85) av	422
L_45 (65) av	1878
L_45 (75) av	834
L_45 (85) av	408

Standard: GB/T 29293-2012

C Range: 0 - 360DEG
 C Interval: 22.5DEG
 Test Speed: HIGH
 Temperature: 25.3DEG
 Operators: Nick
 Test Date: 19 November 2018

γ Range: 0 - 180DEG
 γ Interval: 1.0DEG
 Test System: EVERFINE GO-R5000_V2 SYSTEM V2.0.353
 Humidity: 51.4%
 Test Distance: 1.861m [K=1.0000]
 Remarks:

Planar Illuminance Curve



C Range: 0 - 360DEG
 C Interval: 22.5DEG
 Test Speed: HIGH
 Temperature: 25.3DEG
 Operators: Nick
 Test Date: 19 November 2018

γ Range: 0 - 180DEG
 γ Interval: 1.0DEG
 Test System: EVERFINE GO-R5000_V2 SYSTEM V2.0.353
 Humidity: 51.4%
 Test Distance: 1.861m [K=1.0000]
 Remarks:

LUMINOUS DISTRIBUTION INTENSITY DATA

Test:U:120.1V I:0.0806A P:9.639W PF:0.9956 Freq:60.01Hz Lamp Flux:740.204x1 lm		
NAME: ASD-LDLOBS-4D1040-WH	TYPE:	WEIGHT:
SPEC.:	DIM.:	SERIAL No.:
MFR.: ASD Lighting Corp	SUR.:	Shielding Angle:

Table--1

UNIT: cd

C (DEG) \ γ (DEG)	0	22.5	45	67.5	90	112.5	135	157.5	180	202.5	225	247.5	270	292.5	315	337.5			
0	294	294	294	294	294	294	294	294	294	294	294	294	294	294	294	294			
5	293	293	293	293	293	293	293	293	293	293	293	293	293	293	293	293			
10	289	289	289	289	289	289	289	289	289	289	289	289	289	289	289	289			
15	282	282	282	282	282	282	282	282	283	282	282	282	283	282	283	283			
20	273	273	273	273	273	273	273	273	273	273	273	273	273	273	274	274			
25	261	262	262	261	261	261	261	261	261	261	262	262	261	262	263	262			
30	247	247	248	247	246	246	247	247	247	247	248	247	247	248	249	248			
35	230	231	232	231	229	230	231	230	229	231	232	231	230	232	233	232			
40	208	211	214	210	207	209	213	209	208	210	214	211	209	211	215	212			
45	185	188	193	188	184	187	191	187	184	188	193	189	186	189	194	190			
50	159	163	167	163	158	161	165	161	158	162	167	164	160	164	168	165			
55	131	136	140	135	129	134	138	134	130	135	140	137	132	137	142	138			
60	101	107	111	106	99.1	105	108	105	99.6	106	111	108	102	108	113	110			
65	69.7	75.8	79.7	74.6	67.5	73.1	77.1	72.8	67.8	73.8	79.2	75.9	69.8	76.6	81.5	77.6			
70	39.8	44.6	48.3	43.6	38.0	42.3	45.8	42.0	38.4	43.0	47.6	44.5	39.8	45.1	49.8	46.2			
75	17.9	20.4	21.8	20.0	17.3	19.3	20.4	19.0	17.4	19.7	21.4	20.2	17.9	20.6	22.7	21.3			
80	8.77	9.15	9.09	9.10	8.62	8.78	8.63	8.52	8.53	9.03	9.18	9.12	8.68	9.33	9.64	9.67			
85	3.78	3.98	3.81	3.86	3.78	3.81	3.36	3.43	3.53	3.47	3.38	3.48	3.57	3.63	3.67	3.88			
90	0.28	0.49	0.62	0.65	0.43	0.56	0.55	0.54	0.29	0.42	0.52	0.35	0.34	0.48	0.70	0.48			
95	0.12	0.31	0.49	0.53	0.44	0.51	0.65	0.41	0.25	0.32	0.45	0.24	0.18	0.27	0.42	0.25			
100	0.06	0.23	0.36	0.35	0.32	0.33	0.37	0.24	0.11	0.19	0.27	0.15	0.14	0.18	0.28	0.17			
105	0.05	0.16	0.23	0.21	0.20	0.20	0.21	0.14	0.07	0.11	0.16	0.11	0.10	0.13	0.20	0.12			
110	0.05	0.12	0.16	0.15	0.13	0.13	0.15	0.11	0.06	0.09	0.12	0.09	0.08	0.11	0.15	0.10			
115	0.05	0.10	0.14	0.12	0.11	0.11	0.12	0.09	0.06	0.08	0.10	0.07	0.08	0.10	0.12	0.09			
120	0.06	0.09	0.11	0.11	0.10	0.10	0.10	0.07	0.06	0.07	0.09	0.06	0.08	0.09	0.10	0.08			
125	0.07	0.08	0.10	0.10	0.09	0.09	0.08	0.07	0.06	0.06	0.07	0.06	0.08	0.09	0.09	0.08			
130	0.08	0.07	0.09	0.10	0.09	0.09	0.07	0.07	0.06	0.06	0.07	0.06	0.09	0.08	0.09	0.08			
135	0.06	0.07	0.08	0.09	0.08	0.08	0.06	0.06	0.06	0.06	0.07	0.10	0.09	0.13	0.09	0.08			
140	0.06	0.07	0.08	0.08	0.08	0.07	0.06	0.06	0.06	0.06	0.17	0.09	0.20	0.21	0.13	0.09			
145	0.06	0.08	0.08	0.08	0.08	0.06	0.06	0.09	0.06	0.07	0.19	0.06	0.25	0.26	0.21	0.11			
150	0.08	0.09	0.07	0.08	0.08	0.04	0.05	0.26	0.25	0.24	0.11	0.03	0.17	0.22	0.14	0.12			
155	0.07	0.08	0.07	0.08	0.08	0.04	0.05	0.30	0.28	0.26	0.24	0.06	0.16	0.24	0.17	0.09			
160	0.04	0.07	0.08	0.08	0.07	0.04	0.11	0.31	0.28	0.22	0.19	0.22	0.15	0.08	0.14	0.09			
165	0.05	0.07	0.08	0.07	0.09	0.05	0.14	0.29	0.20	0.16	0.23	0.25	0.03	0.27	0.07	0.13			
170	0.03	0.04	0.06	0.14	0.07	0.06	0.05	0.18	0.10	0.14	0.25	0.25	0.04	0.16	0.22	0.08			
175	0.02	0.02	0.03	0.06	0.03	0.02	0.03	0.03	0.03	0.03	0.02	0.03	0.02	0.02	0.02	0.01			
180	0.00	0.00	0.00	0.00	0.00	0.00	0.00	0.00	0.00	0.00	0.00	0.00	0.00	0.00	0.00	0.00			

C Range: 0 - 360DEG
 C Interval: 22.5DEG
 Test Speed: HIGH
 Temperature: 25.3DEG
 Operators: Nick
 Test Date: 19 November 2018

γ Range: 0 - 180DEG
 γ Interval: 1.0DEG
 Test System: EVERFINE GO-R5000_V2 SYSTEM V2.0.353
 Humidity: 51.4%
 Test Distance: 1.861m [K=1.0000]
 Remarks: