



LED SPORT LIGHT WITH EXTERNAL DRIVER

► **DESIGN & OPTIONS** - LED SPORT LIGHT WITH EXTERNAL DRIVER has an aluminum body with numerous vents on the heat sink for improved heat management to ensure the stability of the light and durability in harsh environments. Advanced optics designed with unique multi-scale lenses provides uniform light distribution, while the glare-reduction maximizes the light output. All fixtures are equipped with a 0-10V dimmable driver and 10Kv surge protection. It comes in 120-277V and a BLACK finish.



Models with High Voltage driver (277-480V) are available.

► **INSTALLATION** - The light weight of the fixture not only makes installation easier, it also allows it to be installed on smaller poles to save costs. It can be installed either with a standard floodlight bracket or using a slip fitter with a straight arm bracket. Refer to install instructions for more information.

► **APPLICATION** - This LED SPORT LIGHT WITH EXTERNAL DRIVER offers versatility for any outdoor sports lighting, parking lot lighting, dock lighting, high mast flood lighting, and stadium lighting. This fixture is IP66 rated and can operate in temperatures ranging from -40°+122°F (-40°+50°C), allowing it to be utilized in a wide variety of applications and climates.

► **ENERGY SAVINGS & EFFICIENCY** - With a calculated lifespan up to 433,000 hours, these fixtures are made to last decades under normal operation! This fixture can cut your electric bill by up to 80% instantly and will save you a significant amount of money in its lifetime.

► **CERTIFICATION & WARRANTY** - Buy with confidence: ASD provides a 10-year limited warranty along with UL certification to guarantee top quality products and safety!

DLC Premium classification allow participation in rebates; please check the rebate programs available in your state.

Catalog number	
Notes	
Type	



Model	Watts	Voltage	Dimmable	Lumens	CCT	Dimensions (LxWxH)	Beam Angle
ASD-SPFL10-500D50	500W	120-277 V	0-10 V	75,512 lm	5,000 K	26-3/16" x 14-3/4" x 15-11/16"	40°
ASD-SPFL10-750D50	750W	120-277 V	0-10 V	102,391 lm	5,000 K	35-7/8" x 18-11/16" x 18-3/4"	40°
SPFL10HV HIGH VOLTAGE							
ASD-SPFL10HV-500D50	500W	277-480 V	0-10 V	77,930 lm	5,000 K	26-3/16" x 14-3/4" x 15-11/16"	40°

ORDERING INFORMATION

Model	UPC	Pcs. per carton	Carton size	Carton weight
ASD-SPFL10-500D50	810050735421	1	22.8" x 19.1" x 12.6"	58.9 lb
ASD-SPFL10-750D50	810050735438	1	27.8" x 22.6" x 14.8"	63.3 lb
SPFL10HV HIGH VOLTAGE				
ASD-SPFL10HV-500D50	810050735445	1	22.8" x 19.1" x 12.6"	58.9 lb

ACCESSORIES:

Model	Name	Materials	Weight	Dimensions (LxWxH)
ASD-SF1-SPFL10	Slip-fitter with straight arm bracket	Aluminum	7.7 lb (3.5 kg)	15-1/16" x 17-11/16" x 3-3/16"
Model	Pcs. per carton	Carton size	Carton weight	UPC
ASD-SF1-SPFL10	5	19.9" x 15.9" x 12.4"	42.5 lb	810050735452

For most up-to-date spec sheets please refer to asd-lighting.com

ASD LIGHTING CORP

E-mail: orders@asd-lighting.com | Web site: www.asd-lighting.com





LED SPORT LIGHT WITH EXTERNAL DRIVER

PRODUCT SPECIFICATIONS:

Construction & Materials				Electrical system		
Housing	Aluminum			Input voltage	ASD-SPFL10-500D50	Regular voltage: 120-277 V
Lens	PC				ASD-SPFL10-750D50	
Visor	SPCC				ASD-SPFL10HV-500D50	
Fixture cord	6.5 ft			Max input current	ASD-SPFL10-500D50	4.17 A
Driver cord	6.5 ft				ASD-SPFL10-750D50	6.25 A
AWG	ASD-SPFL10-500D50	16-18			ASD-SPFL10HV-500D50	1.44 A
	ASD-SPFL10-750D50			ASD-SPFL10-500D50	26 A (0.57 S)	
	ASD-SPFL10HV-500D50	14		ASD-SPFL10-750D50	105 A (1 S)	
Finish	Black			Inrush current (Action time)	ASD-SPFL10HV-500D50	148 A (0.85 S)
Weight	ASD-SPFL10-500D50	55.1 lb (25 kg)			ASD-SPFL10-500D50	min 90 V max 305 V
	ASD-SPFL10-750D50	59.5 lb (27 kg)			ASD-SPFL10-750D50	
	ASD-SPFL10HV-500D50	55.1 lb (25 kg)		ASD-SPFL10HV-500D50	min 249 V max 528 V	
Environmental system				Off state power		
Work environment	Suitable for Wet locations, IP66			Power consumption	ASD-SPFL10-500D50	500W
Operating temperature	-40°F to 122°F (-40°C to 50°C)				ASD-SPFL10-750D50	750W
L-70 Life	ASD-SPFL10-500D50	R > 36,000 hrs; C > 153,000 hrs			ASD-SPFL10HV-500D50	500W
	ASD-SPFL10-750D50			Power factor	> 0.9	
	ASD-SPFL10HV-500D50	R > 90,000 hrs; C > 433,000 hrs			Output voltage	
Optical system				Max output current	ASD-SPFL10-500D50	64 V
Luminous flux	ASD-SPFL10-500D50	75,512 lm			ASD-SPFL10-750D50	56 V
	ASD-SPFL10-750D50	102,391 lm			ASD-SPFL10HV-500D50	64 V
	ASD-SPFL10HV-500D50	77,930 lm			ASD-SPFL10-500D50	9.7 A
Color temperature	5,000 K				ASD-SPFL10-750D50	7.8 A
CRI	> 70			ASD-SPFL10HV-500D50	9.6 A	
Dimming compatible controls				Surge protection DM/CM		
Brand	Models			10 kV / 10 kV		
Lutron	NTSTV-DV	DVSTV	NTFTV	LED driver class		
Leviton	AWSMT-7DW	DD710-BDZ		Class 1		
Legrand	ADF120277	DCLV1				
Eaton	DF10P-C1					
Effective projected area (EPA) ratings						
EPA of 500W	Side/front/top		0.72/1.4/1.89 ft²			
EPA of 750W			0.19/2.18/2.98 ft²			
Regular and voluntary certifications						
10-year limited warranty						
DesignLights Consortium (DLC) listed (Classification: Premium)						
Main: Outdoor Luminaires; General Application: Very High Output;						
Primary Use: Outdoor Pole/Arm-Mounted Area and Roadway Luminaires						
UL listed E473804						

ACCESSORIES (sold separately):

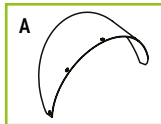
Slip-fitter with straight arm bracket
ASD-SF1-SPFL10

17-12/16 (449.5 mm)
2 1/4 (59.5 mm)
d 1/2 (13 mm)
10/16 (16.5 mm)
4-1/4 (110.5 mm)

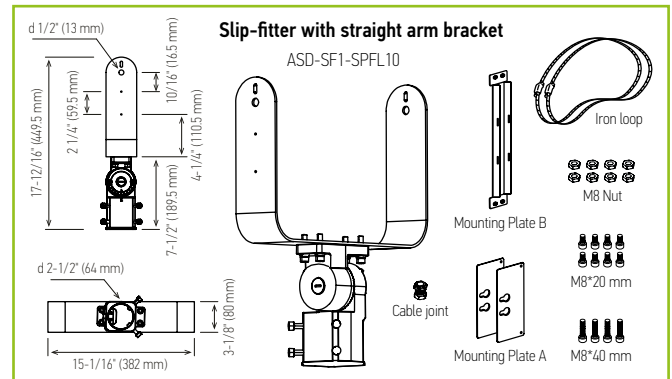
Iron loop
M8 Nut
Mounting Plate B

PACKAGE CONTENTS:

Description	Q-ty
LED Sport Light Fixture with External Driver	1
Visor (A)	1
Box	1
Cut sheet	2



ACCESSORIES (sold separately):



ACCESSORY COMPATIBILITY LIST:

Accessories	Slip-fitter with straight arm bracket ASD-SF1-SPFL10
Models	
ASD-SPFL10-500D50	•
ASD-SPFL10-750D50	•
ASD-SPFL10HV-500D50	•

For most up-to-date spec sheets please refer to asd-lighting.com

ASD LIGHTING CORP

E-mail: orders@asd-lighting.com | Web site: www.asd-lighting.com





LED SPORT LIGHT WITH EXTERNAL DRIVER

INSTALLATION GUIDE

IMPORTANT SAFETY INFORMATION:

Please read all the instructions below before installation.

- ▶ Make sure that the supply voltage corresponds to the rated product voltage.
- ▶ The product must be installed by a qualified electrician in accordance with the National Electrical Code and corresponding local codes.
- ▶ If the product is damaged, do not use it.

⚠ WARNING

RISK OF PERSONAL INJURY – READ and follow all WARNINGS and installation instructions.

Keep or give to the owner for future reference.

Risk of cuts: Wear gloves to prevent cuts or abrasions when removing from carton, handling, installing, and maintaining this product.

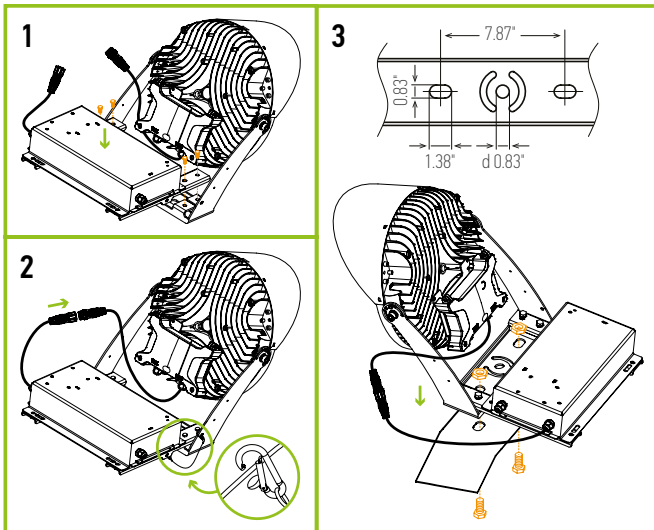
Risk of electric shock: This product must be installed in accordance with the applicable installation code by a person familiar with the construction and operation of the product and the hazards involved.

Risk of Fire: Minimum 194°F supply conductors. Consult a qualified electrician to ensure correct branch circuit conductor.

ASD® assumes no responsibility for claims arising out of improper or careless installation or handling of this product.

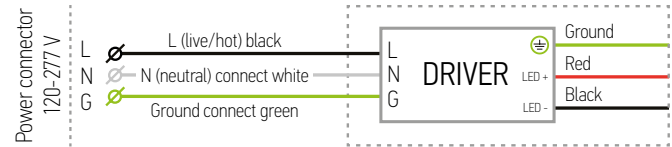
INSTALLATION STEPS:

1. Place the driver box on the mounting bracket.
2. Attach one side of the safety rope to the bracket and the other side to the installation hole of the driver box. Connect the waterproof terminal connector.
3. Place the fixture on the install stand and secure it using M10 screws (not fully screwed in).

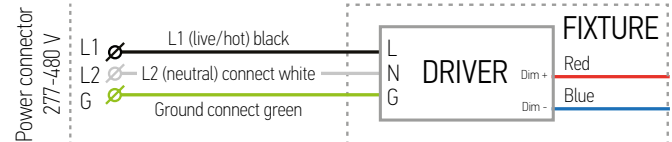


ELECTRICAL SCHEMATIC DIAGRAM:

SPFL10



SPFL10 high voltage



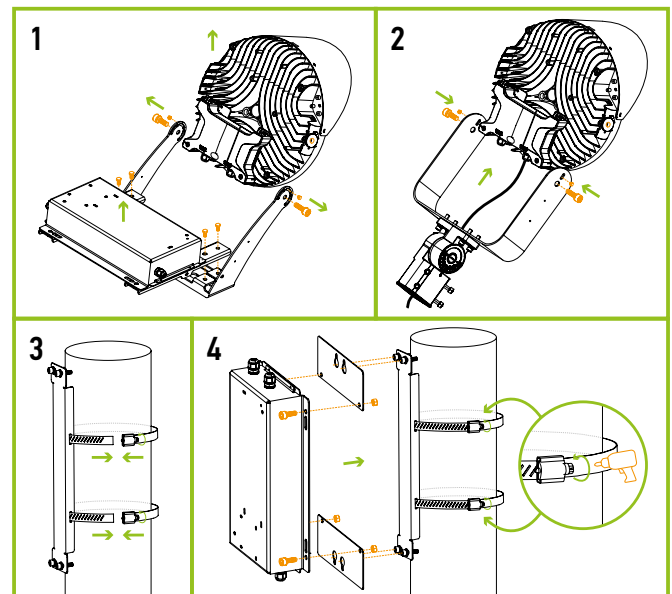
* The regular voltage 120-277V fixtures can be alternatively powered without neutral by two-phase circuit with phase-to-phase voltage of 208V (L1-120V & L2-120V).

WARNING: Phase-to-phase voltage should be less than 277V (160V per each phase) and more than 120V (70V per each phase)! Do not confuse Regular Voltage fixtures of 120-277V with High Voltage ones of 277-480V!

SLIP-FITTER INSTALLATION

ASD-SF1-SPFL10 sold separately:

1. Remove the four M8 screws and the driver box. Then remove the two M12 and M15 screws from the left and right side of the bracket. Lastly, remove the rotatable bracket.
2. Install the new bracket and secure it with the two M12 and M15 screws. After installation, put the wiring cable through the slip fitter bracket.
3. Push the iron loop through the holes in mounting plate B and wrap it around the pole. Tighten the clamping screw and fasten it to the lamp pole.
4. Use four screws to secure mounting plate A (2pcs) to the driver box. Then secure the driver box to mounting plate B on the pole.



For most up-to-date spec sheets please refer to asd-lighting.com

ASD LIGHTING CORP

E-mail: orders@asd-lighting.com | Web site: www.asd-lighting.com

