

ASD[®] LED Minipanel Round

Our ASD LED Minipanel Round is a cutting-edge choice for indoor lighting for both residential and commercial applications. This round lit mini panel features low energy consumption, a 5 year warranty and is rated to last more than 36,000 hours. This low profile design allows you to have a variety of simple mounting applications such as surface mount or in place of a recessed can trim kit.

Available with PIR motion sensor and CCT Adjustable, our Round LED Mini Panel is Energy Star and cETLus listed and will illuminate any space with ease.

| | |
|-----------------------|--|
| <i>Catalog number</i> | |
| <i>Notes</i> | |
| <i>Type</i> | |

FEATURES AND BENEFITS:

- ▶ PIR motion sensor option available
- ▶ CCT Adjustable option available
- ▶ Low energy consumption
- ▶ Dimmable with triac controls
- ▶ Easy to install
- ▶ Damp Location Rated
- ▶ Beam angle: 120°
- ▶ Finish: white
- ▶ Maintenance free
- ▶ Surface mounted
- ▶ L-70 Life R > 36,000 hrs; C > 90,000 hrs
- ▶ cETLus certified
- ▶ Energy star certified
- ▶ 5-year limited warranty



PRODUCT LEGEND:

| Family | Size | Dimmable | Watts | CCT | Option | Finish |
|---------------------|------------|------------------|-----------|--------------------------|--------------------|-----------|
| ASD-MNPR | X | X | XX | XX | XX | X |
| LED Minipanel Round | 5 = 5 inch | D = Dimmable | 6 = 6 W | 30 = 3,000 K | Blank = No options | W = White |
| | 7 = 7 inch | N = Non-dimmable | 12 = 12 W | 40 = 4,000 K | MS = Motion Sensor | |
| | 9 = 9 inch | | 18 = 18 W | CC = 3,000/4,000/5,000 K | | |

LED MINIPANEL ROUND:

| Model | Size | Watts | Dimmable | CCT | Lumens | Dimensions (LxH) |
|----------------------|--------|-------|----------|---------------------|----------|------------------|
| ASD-MNPR-5D630-W | 5 inch | 6 W | Triac | 3,000 K | 363 lm | 8 3/8" x 1/2" |
| ASD-MNPR-5D640-W | 5 inch | 6 W | Triac | 4,000 K | 374 lm | 8 3/8" x 1/2" |
| ASD-MNPR-7D1230-W | 7 inch | 12 W | Triac | 3,000 K | 942 lm | 7" x 1/2" |
| ASD-MNPR-7D1240-W | 7 inch | 12 W | Triac | 4,000 K | 1,058 lm | 7" x 1/2" |
| ASD-MNPR-9D1830-W | 9 inch | 18 W | Triac | 3,000 K | 1,577 lm | 8 7/8" x 1/2" |
| ASD-MNPR-9D1840-W | 9 inch | 18 W | Triac | 4,000 K | 1,636 lm | 8 7/8" x 1/2" |
| ASD-MNPR-9N18CC-MS-W | 9 inch | 18 W | - | 3,000/4,000/5,000 K | 1,280 lm | 8 7/8" x 3/4" |

For most up-to-date spec sheets please refer to asd-lighting.com

ASD LIGHTING CORP

E-mail: orders@asd-lighting.com | Web site: www.asd-lighting.com



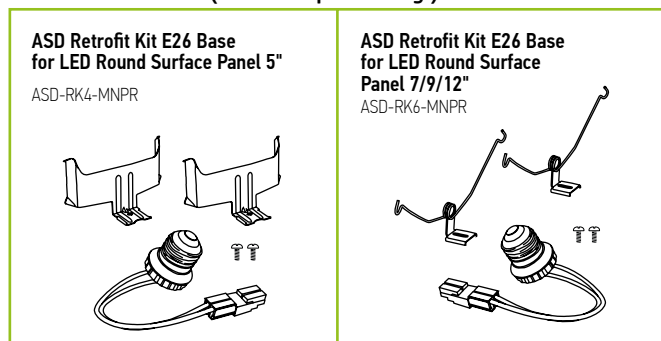


LED Minipanel Round

PRODUCT SPECIFICATIONS:

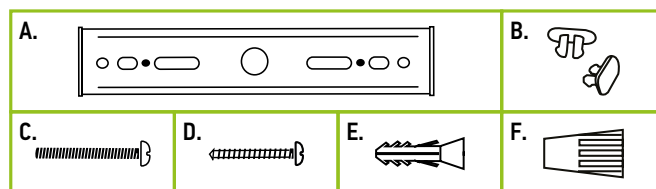
| Construction & Materials | | | | | | |
|--------------------------------------|-----------------------------------|------------------|-------------------|------------------|----------------------|---------------------|
| Housing | Plastic | | | | | |
| Lens | Acrylic | | | | | |
| Finish Color | White | | | | | |
| Weight | ASD-MNPR-5D630-W | 0.4 lbs (0.2 kg) | ASD-MNPR-7D1230-W | 0.9 lbs (0.4 kg) | ASD-MNPR-9D1830-W | 1.2 lbs (0.6 kg) |
| | ASD-MNPR-5D640-W | | ASD-MNPR-7D1240-W | | ASD-MNPR-9D1840-W | |
| | | | | | ASD-MNPR-9N18CC-MS-W | |
| Environmental System | | | | | | |
| Work Environment | Suitable for Damp Locations, IP20 | | | | | |
| Operating Temperature | 4°F to 104°F (-20°C to 40°C) | | | | | |
| L-70 Life | R > 36,000 hrs, C > 90,000 hrs | | | | | |
| Optical System | | | | | | |
| Luminous Flux | ASD-MNPR-5D630-W | 363 lm | ASD-MNPR-7D1230-W | 942 lm | ASD-MNPR-9D1830-W | 1,577 lm |
| | ASD-MNPR-5D640-W | 374 lm | ASD-MNPR-7D1240-W | 1,058 lm | ASD-MNPR-9D1840-W | 1,636 lm |
| | | | | | ASD-MNPR-9N18CC-MS-W | 1,280 lm |
| Color Temperature | ASD-MNPR-5D630-W | 3,000 K | ASD-MNPR-7D1230-W | 3,000 K | ASD-MNPR-9D1830-W | 3,000 K |
| | ASD-MNPR-5D640-W | 4,000 K | ASD-MNPR-7D1240-W | 4,000 K | ASD-MNPR-9D1840-W | 4,000 K |
| | | | | | ASD-MNPR-9N18CC-MS-W | 3,000/4,000/5,000 K |
| CRI | >80 | | | | | |
| Electrical System | | | | | | |
| Input Voltage | 120 V AC | | | | | |
| Max input current | ASD-MNPR-5D630-W | 0.05 A | ASD-MNPR-7D1230-W | 0.1 A | ASD-MNPR-9D1830-W | 0.16 A |
| | ASD-MNPR-5D640-W | | ASD-MNPR-7D1240-W | | ASD-MNPR-9D1840-W | |
| | | | | | ASD-MNPR-9N18CC-MS-W | 0.3 A |
| Inrush current (Action time) | 10 A (1 S) | | | | | |
| AC input range | min 100 V max 130 V | | | | | |
| Off State Power | 0 W | | | | | |
| Power Consumption | ASD-MNPR-5D630-W | 6 W | ASD-MNPR-7D1230-W | 12 W | ASD-MNPR-9D1830-W | 18 W |
| | ASD-MNPR-5D640-W | | ASD-MNPR-7D1240-W | | ASD-MNPR-9D1840-W | |
| | | | | | ASD-MNPR-9N18CC-MS-W | |
| Power Factor | ≥ 0.9 | | | | | |
| Output voltage | 120 V | | | | | |
| LED Driver Class | Class 2 | | | | | |
| Dimming compatible controls | | | | | | |
| Brand | Lutron | | | | Leviton | |
| Models | MSCL-OP153M-WH | SCL-153P-WH | MACL-153M-WH | PD-6WCL-WH | DSL06-1LZ | IPL06-10Z |
| | DVW-603PGH-WH | CTCL-153P-WH | DVCL-153P-WH | | 6674-P0W | 6672-1LW |
| Regular and Voluntary Certifications | | | | | | |
| 5-year limited warranty | | | | | | |
| cETLus certified | | | | | | |
| Energy Star listed | | | | | | |

ACCESSORIES (sold separately):



PACKAGE CONTENTS:

| Description | Q-ty |
|------------------------|------|
| LED Minipanel Round | 1 |
| Bracket (A) | 1 |
| Fix Plug (B) | 2 |
| Mounting screw (C) | 2 |
| Self-tapping screw (D) | 2 |
| Anchor (E) | 2 |
| Wire Nut (F) | 2 |
| Box | 1 |
| Cut Sheet | 2 |



For most up-to-date spec sheets please refer to asd-lighting.com

ASD LIGHTING CORP

E-mail: orders@asd-lighting.com | Web site: www.asd-lighting.com





LED Minipanel Round

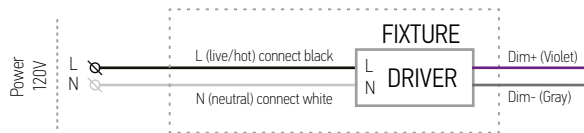
INSTALLATION GUIDE

IMPORTANT SAFETY INFORMATION:

Please read all the instructions below before installation.

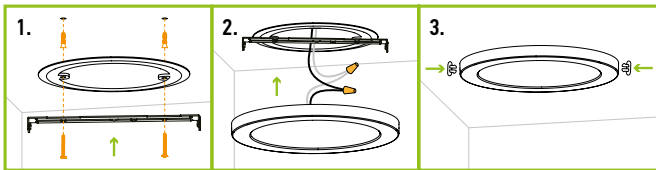
- ▶ Make sure that the supply voltage corresponds to the rated product voltage.
- ▶ The product must be installed by a qualified electrician in accordance with the National Electrical Code and corresponding local codes.
- ▶ If the product is damaged, do not use it.

ELECTRICAL SCHEMATIC DIAGRAM:



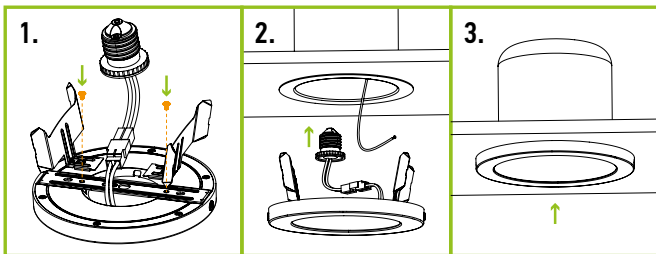
INSTALLATION STEPS:

1. Attach the bracket to the outlet box in the ceiling using screws. If it is needed, anchors and self-tapping screws can be used to make the installation more secure; place the bracket against the ceiling covering the outlet box, mark placement of the mounting keyhole slots and drill two appropriate sized holes for anchors, insert anchors into the holes. Fix the bracket to anchors with two self-tapping screws.
2. Connect the wires: Black to Black, White to White. Secure the connection with the wire nuts.
3. Attach the fixture to the bracket and push in the two side plugs to secure the lamp body to the bracket.



RETROFIT KIT E26 BASE FOR 5" FIXTURE (sold separately):

1. Fix the bracket on the fixture body using fix plugs. Attach spring-loaded clips to the bracket using short screws. Join a TP24 connector to fixture wires and connect it to E26 socket adapter.
2. Screw E26 socket adapter into socket in the housing.
3. Press the fixture into the housing. Installation is complete. Turn on the power at the circuit breaker.



⚠ WARNING

RISK OF PERSONAL INJURY – READ and follow all WARNINGS and installation instructions.

Keep or give to the owner for future reference.

Risk of cuts: Wear gloves to prevent cuts or abrasions when removing from carton, handling, installing, and maintaining this product.

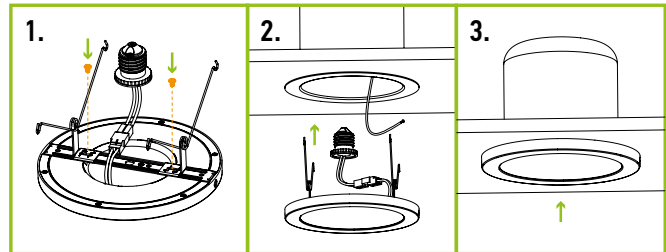
Risk of electric shock: This product must be installed in accordance with the applicable installation code by a person familiar with the construction and operation of the product and the hazards involved.

Risk of Fire: Minimum 194°F supply conductors. Consult a qualified electrician to ensure correct branch circuit conductor.

ASD® assumes no responsibility for claims arising out of improper or careless installation or handling of this product.

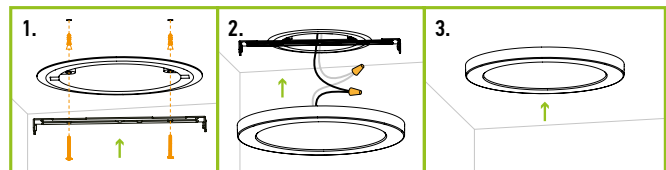
RETROFIT KIT E26 BASE FOR 7/9/12" FIXTURES (sold separately):

1. Fix the bracket on the fixture body using fix plugs. Attach spring-loaded clips to the bracket using short screws. Join a TP24 connector to fixture wires and connect it to E26 socket adapter.
2. Screw E26 socket adapter into socket in the housing.
3. Press the fixture into the housing. Installation is complete. Turn on the power at the circuit breaker.



INSTALLATION STEPS FOR ASD-MNPR-9N18CC-MS-W:


1. Attach the bracket to the existing outlet box in the ceiling using two screws. If it is needed, anchors and self-tapping screws can be used to make the installation more secure; place the bracket against the ceiling covering the outlet box, mark placement of the mounting keyhole slots and drill two appropriate sized holes for anchors, insert anchors into the holes. Fix the bracket to anchors with two self-tapping screws.
2. Connect the wires: Black to Black, White to White. Secure the connection with the wire nuts.
3. Insert the fixture to the bracket until it clicks. Choose needed color temperature and motion sensor setting by adjusting switch position on the side of the fixture.

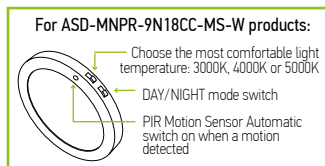
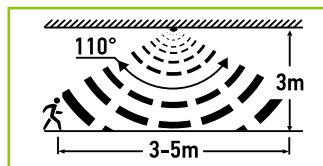


For most up-to-date spec sheets please refer to asd-lighting.com

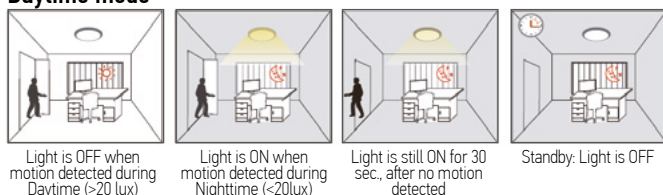
ASD[®] LED Minipanel Round

FUNCTIONS MOTION SENSOR:

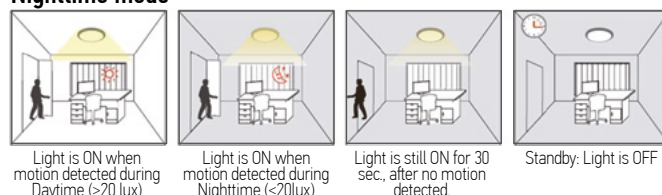
- ▶ Two modes of motion sensor day mode (20 lux)/night mode
 - ▶ The light is ON when movement is detected
 - ▶ After last detection the lights remains on for 30S
 - ▶ After stand-by period, light OFF automatically
- 
 RF interference may affect the operation of this sensor



Daytime mode



Nighttime mode



ORDERING INFORMATION

LED MINIPANEL ROUND:

| Model | Size | Watts | CCT | UPC |
|----------------------|--------|-------|---------------------|--------------|
| ASD-MNPR-5D630-W | 5 inch | 6 W | 3,000 K | 819201020386 |
| ASD-MNPR-5D640-W | 5 inch | 6 W | 4,000 K | 819201020393 |
| ASD-MNPR-7D1230-W | 7 inch | 12 W | 3,000 K | 819201020423 |
| ASD-MNPR-7D1240-W | 7 inch | 12 W | 4,000 K | 819201020430 |
| ASD-MNPR-9D1830-W | 9 inch | 18 W | 3,000 K | 819201020461 |
| ASD-MNPR-9D1840-W | 9 inch | 18 W | 4,000 K | 819201020478 |
| ASD-MNPR-9N18CC-MS-W | 9 inch | 18 W | 3,000/4,000/5,000 K | 810050730341 |

| Model | Pcs in middle box | Middle box Size | Middle box Weight | GTIN 14 for Middle box | Pcs in one Carton | Carton Size | Carton Weight | GTIN 14 for Carton |
|----------------------|-------------------|-----------------|-------------------|------------------------|-------------------|-------------------|---------------|--------------------|
| ASD-MNPR-5D630-W | - | - | - | - | 60 | 13"x11.8"x11.8" | 32 lb | 10819201020383 |
| ASD-MNPR-5D640-W | - | - | - | - | 60 | 13"x11.8"x11.8" | 32 lb | 10819201020390 |
| ASD-MNPR-7D1230-W | - | - | - | - | 40 | 15.2"x8.9"x15.4" | 37.5 lb | 10819201020420 |
| ASD-MNPR-7D1240-W | - | - | - | - | 40 | 15.2"x8.9"x15.4" | 37.5 lb | 10819201020437 |
| ASD-MNPR-9D1830-W | - | - | - | - | 20 | 18.7"x8.9"x9.6" | 28.7 lb | 10819201020468 |
| ASD-MNPR-9D1840-W | - | - | - | - | 20 | 18.7"x8.9"x9.6" | 28.7 lb | 10819201020475 |
| ASD-MNPR-9N18CC-MS-W | 4 | 9.4"x6.9"x10" | 5.8 lb | 10810050730348 | 12 | 10.8"x10.4"x24.8" | 19.8 lb | 20810050730345 |

ACCESSORIES:

| Model | Name | Weight | Dimensions | UPC |
|--------------|---|-------------------|--------------------------|--------------|
| ASD-RK4-MNPR | ASD Retrofit Kit E26 Base for LED Round Surface Panel 5" | 0.1 lb (0.044 kg) | 3 1/8" x 1 1/4" x 1 7/8" | 810050730563 |
| ASD-RK6-MNPR | ASD Retrofit Kit E26 Base for LED Round Surface Panel 7/9/12" | 0.1 lb (0.055 kg) | 6 3/4" x 15/16" x 3 1/8" | 810050730570 |

| Model | Pcs in Middle box | Middle box Size | Middle box Weight | GTIN 14 for Middle box | Pcs in one Carton | Carton Size | Carton Weight | GTIN 14 for Carton |
|--------------|-------------------|--------------------|-------------------|------------------------|-------------------|----------------------|---------------|--------------------|
| ASD-RK4-MNPR | 12 | 6.9" x 5.6" x 6.1" | 1.8 lb | 10810050730560 | 48 | 12.1" x 7.8" x 13.1" | 7.7 lb | 20810050730567 |
| ASD-RK6-MNPR | 12 | 6.9" x 5.6" x 6.1" | 2 lb | 10810050730577 | 48 | 12.1" x 7.8" x 13.1" | 8.6 lb | 20810050730574 |

For most up-to-date spec sheets please refer to asd-lighting.com