



# LED AREA LIGHT WITH Q-BASE AND PHOTOCELL

## PRO series

► **DESIGN** - LED AREA LIGHT WITH Q-BASE AND PHOTOCELL is extremely efficient with a 170lm/W output. With 10kV surge protection, it is designed to operate on 120-277V or 200-480V circuits with a 0-10V dimmable driver. The built-in motion sensor base allows you to install the microwave or PIR motion sensor. Integrated photocell switches the fixture on at night time. It can be easaily deactivated with simple on/off switch.

► **COLOR AND POWER SELECTABLE** - You can choose either a 3,000K warm white, 4,000K cool white or 5,000K daylight color temperature, and change the power with a simple switch.

► **3G** - Vibration rated, withstands conditions with repeated vibration, making it conform to standards for roadway.

► **INSTALLATION** - This fixture is Wet Locations rated and can be pole, post, or wall mounted using the slip fitter bracket, arm bracket, floodlight bracket, or full trunnion bracket. It comes with a 4 ft cord. Perfect commercial or industrial solution for roadway lighting, highway lighting, sport lighting, parks, parking lots, backyards, and many other applications.

► **ADVANTAGES** - With calculated lifespan up to 163,000 hours, these fixtures are made to last decades under normal operation! ASD provides a 5-year limited warranty along with UL and DLC Premium certifications to guarantee top quality products and safety!

Catalog number	
Notes	
Type	



LSB5A-PRO



LSB5B-PRO



LSB5R-PRO

For most up-to-date spec sheets please refer to [asd-lighting.com](http://asd-lighting.com)





# LED AREA LIGHT WITH Q-BASE AND PHOTOCELL

## PRO series

Model	Watts	Voltage	Dimmable	Lumens	CCT	Finish	Dimensions (LxWxH)	Cord	Pre-installed
<b>LSB5A-PRO 170lm/W</b>									
ASD-LSB5A-PRO-150WH	100/120/150W	120-277 V	0-10 V	up to 24,914 lm	3CCT (3,000/4,000/5,000 K)	White	14-5/16" x 11" x 2-13/16"	3.9 ft	Photocell
ASD-LSB5A-PRO-150SL	100/120/150W	120-277 V	0-10 V	up to 24,914 lm	3CCT (3,000/4,000/5,000 K)	Silver	14-5/16" x 11" x 2-13/16"	3.9 ft	Photocell
ASD-LSB5A-PRO-150BR	100/120/150W	120-277 V	0-10 V	up to 24,914 lm	3CCT (3,000/4,000/5,000 K)	Bronze	14-5/16" x 11" x 2-13/16"	3.9 ft	Photocell
ASD-LSB5A-PRO-150BK	100/120/150W	120-277 V	0-10 V	up to 24,914 lm	3CCT (3,000/4,000/5,000 K)	Black	14-5/16" x 11" x 2-13/16"	3.9 ft	Photocell
ASD-LSB5A-PRO-200WH	100/150/200W	120-277 V	0-10 V	up to 33,511 lm	3CCT (3,000/4,000/5,000 K)	White	14-5/16" x 11" x 2-13/16"	3.9 ft	Photocell
ASD-LSB5A-PRO-200SL	100/150/200W	120-277 V	0-10 V	up to 33,511 lm	3CCT (3,000/4,000/5,000 K)	Silver	14-5/16" x 11" x 2-13/16"	3.9 ft	Photocell
ASD-LSB5A-PRO-200BR	100/150/200W	120-277 V	0-10 V	up to 33,511 lm	3CCT (3,000/4,000/5,000 K)	Bronze	14-5/16" x 11" x 2-13/16"	3.9 ft	Photocell
ASD-LSB5A-PRO-200BK	100/150/200W	120-277 V	0-10 V	up to 33,511 lm	3CCT (3,000/4,000/5,000 K)	Black	14-5/16" x 11" x 2-13/16"	3.9 ft	Photocell
ASD-LSB5A-PRO-240WH	150/200/240W	120-277 V	0-10 V	up to 40,372 lm	3CCT (3,000/4,000/5,000 K)	White	18-1/2" x 12-9/16" x 2-13/16"	3.9 ft	Photocell
ASD-LSB5A-PRO-240SL	150/200/240W	120-277 V	0-10 V	up to 40,372 lm	3CCT (3,000/4,000/5,000 K)	Silver	18-1/2" x 12-9/16" x 2-13/16"	3.9 ft	Photocell
ASD-LSB5A-PRO-240BR	150/200/240W	120-277 V	0-10 V	up to 40,372 lm	3CCT (3,000/4,000/5,000 K)	Bronze	18-1/2" x 12-9/16" x 2-13/16"	3.9 ft	Photocell
ASD-LSB5A-PRO-240BK	150/200/240W	120-277 V	0-10 V	up to 40,372 lm	3CCT (3,000/4,000/5,000 K)	Black	18-1/2" x 12-9/16" x 2-13/16"	3.9 ft	Photocell
ASD-LSB5A-PRO-300WH	200/240/300W	120-277 V	0-10 V	up to 52,440 lm	3CCT (3,000/4,000/5,000 K)	White	18-1/2" x 12-9/16" x 2-13/16"	3.9 ft	Photocell
ASD-LSB5A-PRO-300SL	200/240/300W	120-277 V	0-10 V	up to 52,440 lm	3CCT (3,000/4,000/5,000 K)	Silver	18-1/2" x 12-9/16" x 2-13/16"	3.9 ft	Photocell
ASD-LSB5A-PRO-300BR	200/240/300W	120-277 V	0-10 V	up to 52,440 lm	3CCT (3,000/4,000/5,000 K)	Bronze	18-1/2" x 12-9/16" x 2-13/16"	3.9 ft	Photocell
ASD-LSB5A-PRO-300BK	200/240/300W	120-277 V	0-10 V	up to 52,440 lm	3CCT (3,000/4,000/5,000 K)	Black	18-1/2" x 12-9/16" x 2-13/16"	3.9 ft	Photocell
ASD-LSB5A-PRO-500WH	300/400/500W	120-277 V	0-10 V	up to 84,732 lm	3CCT (3,000/4,000/5,000 K)	White	27-1/8" x 14-1/8" x 2-13/16"	3.9 ft	Photocell
ASD-LSB5A-PRO-500SL	300/400/500W	120-277 V	0-10 V	up to 84,732 lm	3CCT (3,000/4,000/5,000 K)	Silver	27-1/8" x 14-1/8" x 2-13/16"	3.9 ft	Photocell
ASD-LSB5A-PRO-500BR	300/400/500W	120-277 V	0-10 V	up to 84,732 lm	3CCT (3,000/4,000/5,000 K)	Bronze	27-1/8" x 14-1/8" x 2-13/16"	3.9 ft	Photocell
ASD-LSB5A-PRO-500BK	300/400/500W	120-277 V	0-10 V	up to 84,732 lm	3CCT (3,000/4,000/5,000 K)	Black	27-1/8" x 14-1/8" x 2-13/16"	3.9 ft	Photocell
<b>LSB5A-HV-PRO HIGH VOLTAGE 170lm/W</b>									
ASD-LSB5A-HV-PRO-150BR	100/120/150W	277-480 V	0-10 V	up to 25,191 lm	3CCT (3,000/4,000/5,000 K)	Bronze	14-5/16" x 11" x 2-13/16"	3.9 ft	Photocell
ASD-LSB5A-HV-PRO-240BR	150/200/240W	277-480 V	0-10 V	up to 41,388 lm	3CCT (3,000/4,000/5,000 K)	Bronze	18-1/2" x 12-9/16" x 2-13/16"	3.9 ft	Photocell
ASD-LSB5A-HV-PRO-300BR	200/240/300W	277-480 V	0-10 V	up to 52,361 lm	3CCT (3,000/4,000/5,000 K)	Bronze	18-1/2" x 12-9/16" x 2-13/16"	3.9 ft	Photocell
ASD-LSB5A-HV-PRO-500BR	300/400/500W	277-480 V	0-10 V	up to 86,582lm	3CCT (3,000/4,000/5,000 K)	Bronze	27-1/8" x 14-1/8" x 2-13/16"	3.9 ft	Photocell

Model	Watts	Voltage	Dimmable	Lumens	CCT	Finish	Dimensions (LxWxH)	Cord	Pre-installed
<b>LSB5B-PRO 170lm/W</b>									
ASD-LSB5B-PRO-150WH	100/120/150W	120-277 V	0-10 V	up to 23,503 lm	3CCT (3,000/4,000/5,000 K)	White	12-5/16" x 11-5/16" x 2-7/16"	3.9 ft	Photocell
ASD-LSB5B-PRO-150SL	100/120/150W	120-277 V	0-10 V	up to 23,503 lm	3CCT (3,000/4,000/5,000 K)	Silver	12-5/16" x 11-5/16" x 2-7/16"	3.9 ft	Photocell
ASD-LSB5B-PRO-150BR	100/120/150W	120-277 V	0-10 V	up to 23,503 lm	3CCT (3,000/4,000/5,000 K)	Bronze	12-5/16" x 11-5/16" x 2-7/16"	3.9 ft	Photocell
ASD-LSB5B-PRO-150BK	100/120/150W	120-277 V	0-10 V	up to 23,503 lm	3CCT (3,000/4,000/5,000 K)	Black	12-5/16" x 11-5/16" x 2-7/16"	3.9 ft	Photocell
ASD-LSB5B-PRO-200WH	100/150/200W	120-277 V	0-10 V	up to 29,553 lm	3CCT (3,000/4,000/5,000 K)	White	12-5/16" x 11-5/16" x 2-7/16"	3.9 ft	Photocell
ASD-LSB5B-PRO-200SL	100/150/200W	120-277 V	0-10 V	up to 29,553 lm	3CCT (3,000/4,000/5,000 K)	Silver	12-5/16" x 11-5/16" x 2-7/16"	3.9 ft	Photocell
ASD-LSB5B-PRO-200BR	100/150/200W	120-277 V	0-10 V	up to 29,553 lm	3CCT (3,000/4,000/5,000 K)	Bronze	12-5/16" x 11-5/16" x 2-7/16"	3.9 ft	Photocell
ASD-LSB5B-PRO-200BK	100/150/200W	120-277 V	0-10 V	up to 29,553 lm	3CCT (3,000/4,000/5,000 K)	Black	12-5/16" x 11-5/16" x 2-7/16"	3.9 ft	Photocell
ASD-LSB5B-PRO-240WH	150/200/240W	120-277 V	0-10 V	up to 36,329 lm	3CCT (3,000/4,000/5,000 K)	White	16-9/16" x 12-3/16" x 2-1/2"	3.9 ft	Photocell
ASD-LSB5B-PRO-240SL	150/200/240W	120-277 V	0-10 V	up to 36,329 lm	3CCT (3,000/4,000/5,000 K)	Silver	16-9/16" x 12-3/16" x 2-1/2"	3.9 ft	Photocell
ASD-LSB5B-PRO-240BR	150/200/240W	120-277 V	0-10 V	up to 36,329 lm	3CCT (3,000/4,000/5,000 K)	Bronze	16-9/16" x 12-3/16" x 2-1/2"	3.9 ft	Photocell
ASD-LSB5B-PRO-240BK	150/200/240W	120-277 V	0-10 V	up to 36,329 lm	3CCT (3,000/4,000/5,000 K)	Black	16-9/16" x 12-3/16" x 2-1/2"	3.9 ft	Photocell
ASD-LSB5B-PRO-300WH	200/240/300W	120-277 V	0-10 V	up to 43,463 lm	3CCT (3,000/4,000/5,000 K)	White	16-9/16" x 12-3/16" x 2-1/2"	3.9 ft	Photocell
ASD-LSB5B-PRO-300SL	200/240/300W	120-277 V	0-10 V	up to 43,463 lm	3CCT (3,000/4,000/5,000 K)	Silver	16-9/16" x 12-3/16" x 2-1/2"	3.9 ft	Photocell
ASD-LSB5B-PRO-300BR	200/240/300W	120-277 V	0-10 V	up to 43,463 lm	3CCT (3,000/4,000/5,000 K)	Bronze	16-9/16" x 12-3/16" x 2-1/2"	3.9 ft	Photocell
ASD-LSB5B-PRO-300BK	200/240/300W	120-277 V	0-10 V	up to 43,463 lm	3CCT (3,000/4,000/5,000 K)	Black	16-9/16" x 12-3/16" x 2-1/2"	3.9 ft	Photocell
ASD-LSB5B-PRO-500WH	300/400/500W	120-277 V	0-10 V	up to 73,249 lm	3CCT (3,000/4,000/5,000 K)	White	29-7/16" x 12-3/16" x 2-3/4"	3.9 ft	Photocell
ASD-LSB5B-PRO-500SL	300/400/500W	120-277 V	0-10 V	up to 73,249 lm	3CCT (3,000/4,000/5,000 K)	Silver	29-7/16" x 12-3/16" x 2-3/4"	3.9 ft	Photocell
ASD-LSB5B-PRO-500BR	300/400/500W	120-277 V	0-10 V	up to 73,249 lm	3CCT (3,000/4,000/5,000 K)	Bronze	29-7/16" x 12-3/16" x 2-3/4"	3.9 ft	Photocell
ASD-LSB5B-PRO-500BK	300/400/500W	120-277 V	0-10 V	up to 73,249 lm	3CCT (3,000/4,000/5,000 K)	Black	29-7/16" x 12-3/16" x 2-3/4"	3.9 ft	Photocell
<b>LSB5BHV-PRO HIGH VOLTAGE 170lm/W</b>									
ASD-LSB5BHV-PRO-150BR	100/120/150W	200-480 V	0-10 V	up to 23,503 lm	3CCT (3,000/4,000/5,000 K)	Bronze	12-5/16" x 11-5/16" x 2-7/16"	3.9 ft	Photocell
ASD-LSB5BHV-PRO-200BR	100/150/200W	200-480 V	0-10 V	up to 29,553 lm	3CCT (3,000/4,000/5,000 K)	Bronze	12-5/16" x 11-5/16" x 2-7/16"	3.9 ft	Photocell
ASD-LSB5BHV-PRO-240BR	150/200/240W	200-480 V	0-10 V	up to 36,329 lm	3CCT (3,000/4,000/5,000 K)	Bronze	16-9/16" x 12-3/16" x 2-1/2"	3.9 ft	Photocell
ASD-LSB5BHV-PRO-300WH	200/240/300W	200-480 V	0-10 V	up to 43,463 lm	3CCT (3,000/4,000/5,000 K)	White	16-9/16" x 12-3/16" x 2-1/2"	3.9 ft	Photocell
ASD-LSB5BHV-PRO-300SL	200/240/300W	200-480 V	0-10 V	up to 43,463 lm	3CCT (3,000/4,000/5,000 K)	Silver	16-9/16" x 12-3/16" x 2-1/2"	3.9 ft	Photocell
ASD-LSB5BHV-PRO-300BR	200/240/300W	200-480 V	0-10 V	up to 43,463 lm	3CCT (3,000/4,000/5,000 K)	Bronze	16-9/16" x 12-3/16" x 2-1/2"	3.9 ft	Photocell
ASD-LSB5BHV-PRO-500BR	300/400/500W	200-480 V	0-10 V	up to 73,249 lm	3CCT (3,000/4,000/5,000 K)	Bronze	29-7/16" x 12-3/16" x 2-3/4"	3.9 ft	Photocell

Model	Watts	Voltage	Dimmable	Lumens	CCT	Finish	Dimensions (LxWxH)	Cord	Bracket	Pre-installed
<b>LSB5R-PRO 170lm/W</b>										
ASD-LSB5R-PRO-100BK	35/55/75/100W	120-277 V	0-10 V	up to 16,567 lm	3CCT (3,000/4,000/5,000 K)	Black	11-1/2" x 11-7/16" x 2-5/8"	3.9 ft	-	Photocell
ASD-LSB5R-PRO-100BK-POST	35/55/75/100W	120-277 V	0-10 V	up to 16,567 lm	3CCT (3,000/4,000/5,000 K)	Black	11-1/2" x 12-9/16" x 18-3/4"	3.9 ft	Post	Photocell

For detailed luminous flux information please refer to Annex 1, page 14.

For most up-to-date spec sheets please refer to [asd-lighting.com](http://asd-lighting.com)



# LED AREA LIGHT WITH Q-BASE AND PHOTOCCELL

## PRO series

Model	Description	Dimensions (LxWxH)
<b>SENSORS AND REMOTE</b>		
ASD-09MW-WH	Microwave motion sensor 3pin white	2-1/8" x 2-1/8" x 1-5/16"
ASD-09MW-BK	Microwave motion sensor 3pin black	2-1/8" x 2-1/8" x 1-5/16"
ASD-09IR-WH	Infrared motion sensor 3pin 39 ft white	2-1/8" x 2-1/8" x 1-11/16"
ASD-09IR-BK	Infrared motion sensor 3pin 39 ft black	2-1/8" x 2-1/8" x 1-11/16"
ASD-09IR50-WH	Infrared motion sensor 3pin 50 ft white	2-1/8" x 2-1/8" x 1-11/16"
ASD-06RC	Remote control for motion sensor	5-11/16" x 1-3/4" x 13/16"
ASD-09MW-NLS-WH	Microwave motion sensor smart 3pin white	2-1/8" x 2-1/8" x 1-3/8"
ASD-09IR-NLS-WH	Infrared motion sensor smart 3pin 39 ft white	2-1/8" x 2-1/8" x 1-11/16"
ASD-06RC-NLS	Remote control for NLS devices	5-11/16" x 1-3/4" x 13/16"

## PRODUCT SPECIFICATIONS:

Construction & Materials						
Housing	Aluminum					
Lens	PC					
Finish	White, Silver, Bronze, Black					
Weight	ASD-LSB5A-PRO-150WH	7.3 lbs (3.3 kg)	ASD-LSB5A-PRO-500BR	17.4 lbs (7.9 kg)	ASD-LSB5B-PRO-300WH	7.1 lbs (3.2 kg)
	ASD-LSB5A-PRO-150SL		ASD-LSB5A-PRO-500BK		ASD-LSB5B-PRO-300SL	
	ASD-LSB5A-PRO-150BR		ASD-LSB5A-HV-PRO-150BR	7.3 lbs (3.3 kg)	ASD-LSB5B-PRO-300BR	
	ASD-LSB5A-PRO-150BK		ASD-LSB5A-HV-PRO-240BR	9.5 lbs (4.3 kg)	ASD-LSB5B-PRO-300BK	
	ASD-LSB5A-PRO-200WH		ASD-LSB5A-HV-PRO-300BR	9.7 lbs (4.4 kg)	ASD-LSB5B-PRO-500WH	
	ASD-LSB5A-PRO-200SL		ASD-LSB5A-HV-PRO-500BR	17.4 lbs (7.9 kg)	ASD-LSB5B-PRO-500SL	
	ASD-LSB5A-PRO-200BR	9.5 lbs (4.3 kg)	ASD-LSB5B-PRO-150WH	5.7 lbs (2.6 kg)	ASD-LSB5B-PRO-500BK	14.1 lbs (6.4 kg)
	ASD-LSB5A-PRO-200BK		ASD-LSB5B-PRO-150SL		ASD-LSB5B-PRO-500BR	
	ASD-LSB5A-PRO-240WH		ASD-LSB5B-PRO-150BR		ASD-LSB5BHV-PRO-150BR	
	ASD-LSB5A-PRO-240SL		ASD-LSB5B-PRO-150BK		ASD-LSB5BHV-PRO-200BR	
	ASD-LSB5A-PRO-240BR		ASD-LSB5B-PRO-200WH		ASD-LSB5BHV-PRO-240BR	
	ASD-LSB5A-PRO-240BK		ASD-LSB5B-PRO-200SL		ASD-LSB5BHV-PRO-300WH	
	ASD-LSB5A-PRO-300WH	9.7 lbs (4.4 kg)	ASD-LSB5B-PRO-200BR	7.1 lbs (3.2 kg)	ASD-LSB5BHV-PRO-300SL	7.1 lbs (3.2 kg)
	ASD-LSB5A-PRO-300SL		ASD-LSB5B-PRO-200BK		ASD-LSB5BHV-PRO-300BR	
	ASD-LSB5A-PRO-300BR		ASD-LSB5B-PRO-240WH		ASD-LSB5BHV-PRO-500BR	
	ASD-LSB5A-PRO-300BK		ASD-LSB5B-PRO-240SL		ASD-LSB5R-PRO-100BK	
	ASD-LSB5A-PRO-500WH		ASD-LSB5B-PRO-240BR		ASD-LSB5R-PRO-100BK-POST	
	ASD-LSB5A-PRO-500SL		ASD-LSB5B-PRO-240BK		7.5 lbs (3.4 kg)	
Environmental system						
Work environment	for LSB5A models: Suitable for Wet Locations, IP66		for LSB5B, LSB5R models: Suitable for Wet Locations, IP65			
Operating temperature	-40°F to 122°F (-40°C to 50°C)		for LSB5R models: -22°F to 122°F (-30°C to 50°C)			
L-70 Life	for LSB5A models: R > 54,000 hrs; C > 163,000 hrs		for LSB5B models: R > 102,000 hrs; C > 167,000 hrs		for LSB5R models: R > 54,000 hrs; C > 150,000 hrs	
Optical system						
Color temperature	3CCT switch (3,000/4,000/5,000 K), 5,000 K by default					
CRI	> 70					
Electrical system						
Input voltage	Regular voltage: 120-277 V		High voltage for LSB5A models: 277-480 V		High voltage for LSB5B models: 200-480 V	
Max input current	2 A	ASD-LSB5A-PRO-150WH	6 A	ASD-LSB5B-PRO-300WH	3.4 A	
		ASD-LSB5A-PRO-150SL		ASD-LSB5B-PRO-300SL		
		ASD-LSB5A-PRO-150BR		ASD-LSB5B-PRO-300BR		
		ASD-LSB5A-PRO-150BK		ASD-LSB5B-PRO-300BK		
		ASD-LSB5A-PRO-200WH		ASD-LSB5B-PRO-500WH		
		ASD-LSB5A-PRO-200SL		ASD-LSB5B-PRO-500SL		
	2.6 A	ASD-LSB5A-PRO-200BR	1.7 A	ASD-LSB5B-PRO-500BR	5.6 A	
		ASD-LSB5A-PRO-200BK		ASD-LSB5B-PRO-150WH		
		ASD-LSB5A-PRO-240WH		ASD-LSB5B-PRO-150SL		ASD-LSB5B-PRO-500BK
		ASD-LSB5A-PRO-240SL		ASD-LSB5B-PRO-150BR		ASD-LSB5BHV-PRO-150BR
		ASD-LSB5A-PRO-240BR		ASD-LSB5B-PRO-150BK		ASD-LSB5BHV-PRO-200BR
		ASD-LSB5A-PRO-240BK		ASD-LSB5B-PRO-200WH		ASD-LSB5BHV-PRO-240BR
	3 A	ASD-LSB5A-PRO-300WH	2.2 A	ASD-LSB5BHV-PRO-300SL	1.7 A	
		ASD-LSB5A-PRO-300SL		ASD-LSB5B-PRO-200BR		
		ASD-LSB5A-PRO-300BR		ASD-LSB5B-PRO-240WH		
		ASD-LSB5A-PRO-300BK		ASD-LSB5B-PRO-200BK		
		ASD-LSB5A-PRO-500WH		ASD-LSB5B-PRO-240WH		
		ASD-LSB5A-PRO-500SL		ASD-LSB5B-PRO-240SL		
4 A	6 A	ASD-LSB5B-PRO-240BR	2.7 A	ASD-LSB5BHV-PRO-500BR	2.8 A	
		ASD-LSB5B-PRO-240BK		ASD-LSB5R-PRO-100BK		
		ASD-LSB5B-PRO-240WH		ASD-LSB5R-PRO-100BK-POST		
		ASD-LSB5B-PRO-240SL		1.1 A		
		ASD-LSB5B-PRO-240BR				
		ASD-LSB5B-PRO-240BK				

For most up-to-date spec sheets please refer to [asd-lighting.com](http://asd-lighting.com)



# LED AREA LIGHT WITH Q-BASE AND PHOTOCCELL

## PRO series

Electrical system									
Inrush current (Action time)	ASD-LSB5A-PRO-150WH	80 A (0.35 S)	ASD-LSB5A-PRO-500BR	80 A (0.35 S)	ASD-LSB5B-PRO-300WH	80 A (0.9 S)			
	ASD-LSB5A-PRO-150SL		ASD-LSB5A-PRO-500BK		ASD-LSB5B-PRO-300SL				
	ASD-LSB5A-PRO-150BR		ASD-LSB5A-HV-PRO-150BR	ASD-LSB5B-PRO-300BR					
	ASD-LSB5A-PRO-150BK		ASD-LSB5A-HV-PRO-240BR	ASD-LSB5B-PRO-300BK					
	ASD-LSB5A-PRO-200WH		ASD-LSB5A-HV-PRO-300BR	ASD-LSB5B-PRO-500WH					
	ASD-LSB5A-PRO-200SL		ASD-LSB5A-HV-PRO-500BR	ASD-LSB5B-PRO-500SL					
	ASD-LSB5A-PRO-200BR		ASD-LSB5B-PRO-150WH	ASD-LSB5B-PRO-500BR					
	ASD-LSB5A-PRO-200BK		ASD-LSB5B-PRO-150SL	ASD-LSB5B-PRO-500BK					
	ASD-LSB5A-PRO-240WH		ASD-LSB5B-PRO-150BR	ASD-LSB5BHV-PRO-150BR					
	ASD-LSB5A-PRO-240SL		ASD-LSB5B-PRO-150BK	ASD-LSB5BHV-PRO-200BR					
	ASD-LSB5A-PRO-240BR	ASD-LSB5B-PRO-200WH	ASD-LSB5BHV-PRO-240BR						
	ASD-LSB5A-PRO-240BK	ASD-LSB5B-PRO-200SL	ASD-LSB5BHV-PRO-300WH						
	ASD-LSB5A-PRO-300WH	ASD-LSB5B-PRO-200BR	ASD-LSB5BHV-PRO-300SL						
	ASD-LSB5A-PRO-300SL	ASD-LSB5B-PRO-200BK	ASD-LSB5BHV-PRO-300BR						
	ASD-LSB5A-PRO-300BR	ASD-LSB5B-PRO-240WH	ASD-LSB5BHV-PRO-500BR						
	ASD-LSB5A-PRO-300BK	ASD-LSB5B-PRO-240SL	ASD-LSB5R-PRO-100BK						
	ASD-LSB5A-PRO-500WH	ASD-LSB5B-PRO-240BR	ASD-LSB5R-PRO-100BK-POST						
ASD-LSB5A-PRO-500SL	ASD-LSB5B-PRO-240BK								
Off state power	0W								
Power consumption	ASD-LSB5A-PRO-150WH	100/120/150W	ASD-LSB5A-PRO-500BR	300/400/500W	ASD-LSB5B-PRO-300WH	200/240/300W			
	ASD-LSB5A-PRO-150SL		ASD-LSB5A-PRO-500BK		ASD-LSB5B-PRO-300SL				
	ASD-LSB5A-PRO-150BR		ASD-LSB5A-HV-PRO-150BR		ASD-LSB5B-PRO-300BR				
	ASD-LSB5A-PRO-150BK	ASD-LSB5A-HV-PRO-240BR	ASD-LSB5B-PRO-300BK						
	ASD-LSB5A-PRO-200WH	ASD-LSB5A-HV-PRO-300BR	ASD-LSB5B-PRO-500WH						
	ASD-LSB5A-PRO-200SL	ASD-LSB5A-HV-PRO-500BR	ASD-LSB5B-PRO-500SL						
	ASD-LSB5A-PRO-200BR	ASD-LSB5B-PRO-150WH	ASD-LSB5B-PRO-500BR						
	ASD-LSB5A-PRO-200BK	ASD-LSB5B-PRO-150SL	ASD-LSB5B-PRO-500BK						
	ASD-LSB5A-PRO-240WH	ASD-LSB5B-PRO-150BR	ASD-LSB5BHV-PRO-150BR						
	ASD-LSB5A-PRO-240SL	ASD-LSB5B-PRO-150BK	ASD-LSB5BHV-PRO-200BR						
	ASD-LSB5A-PRO-240BR	ASD-LSB5B-PRO-200WH	ASD-LSB5BHV-PRO-240BR						
	ASD-LSB5A-PRO-240BK	ASD-LSB5B-PRO-200SL	ASD-LSB5BHV-PRO-300WH						
	ASD-LSB5A-PRO-300WH	ASD-LSB5B-PRO-200BR	ASD-LSB5BHV-PRO-300SL						
	ASD-LSB5A-PRO-300SL	ASD-LSB5B-PRO-200BK	ASD-LSB5BHV-PRO-300BR						
	ASD-LSB5A-PRO-300BR	ASD-LSB5B-PRO-240WH	ASD-LSB5BHV-PRO-500BR						
	ASD-LSB5A-PRO-300BK	ASD-LSB5B-PRO-240SL	ASD-LSB5R-PRO-100BK						
	ASD-LSB5A-PRO-500WH	ASD-LSB5B-PRO-240BR	ASD-LSB5R-PRO-100BK-POST						
ASD-LSB5A-PRO-500SL	ASD-LSB5B-PRO-240BK								
Power factor	> 0.9								
Output voltage	for LSB5A models: 180-260 V		for LSB5B models: 252 V		for LSB5R models: 243 V				
Max output current	ASD-LSB5A-PRO-150WH	0.5-0.75 A	ASD-LSB5A-PRO-500BR	1.5-2.2 A	ASD-LSB5B-PRO-300WH	1.13 A			
	ASD-LSB5A-PRO-150SL		ASD-LSB5A-PRO-500BK		ASD-LSB5B-PRO-300SL				
	ASD-LSB5A-PRO-150BR		ASD-LSB5A-HV-PRO-150BR		ASD-LSB5B-PRO-300BR				
	ASD-LSB5A-PRO-150BK	ASD-LSB5A-HV-PRO-240BR	ASD-LSB5B-PRO-300BK						
	ASD-LSB5A-PRO-200WH	ASD-LSB5A-HV-PRO-300BR	ASD-LSB5B-PRO-500WH						
	ASD-LSB5A-PRO-200SL	ASD-LSB5A-HV-PRO-500BR	ASD-LSB5B-PRO-500SL						
	ASD-LSB5A-PRO-200BR	ASD-LSB5B-PRO-150WH	ASD-LSB5B-PRO-500BR						
	ASD-LSB5A-PRO-200BK	ASD-LSB5B-PRO-150SL	ASD-LSB5B-PRO-500BK						
	ASD-LSB5A-PRO-240WH	ASD-LSB5B-PRO-150BR	ASD-LSB5BHV-PRO-150BR						
	ASD-LSB5A-PRO-240SL	ASD-LSB5B-PRO-150BK	ASD-LSB5BHV-PRO-200BR						
	ASD-LSB5A-PRO-240BR	ASD-LSB5B-PRO-200WH	ASD-LSB5BHV-PRO-240BR						
	ASD-LSB5A-PRO-240BK	ASD-LSB5B-PRO-200SL	ASD-LSB5BHV-PRO-300WH						
	ASD-LSB5A-PRO-300WH	ASD-LSB5B-PRO-200BR	ASD-LSB5BHV-PRO-300SL						
	ASD-LSB5A-PRO-300SL	ASD-LSB5B-PRO-200BK	ASD-LSB5BHV-PRO-300BR						
	ASD-LSB5A-PRO-300BR	ASD-LSB5B-PRO-240WH	ASD-LSB5BHV-PRO-500BR						
	ASD-LSB5A-PRO-300BK	ASD-LSB5B-PRO-240SL	ASD-LSB5R-PRO-100BK						
	ASD-LSB5A-PRO-500WH	ASD-LSB5B-PRO-240BR	ASD-LSB5R-PRO-100BK-POST						
ASD-LSB5A-PRO-500SL	ASD-LSB5B-PRO-240BK								
Surge protection DM/CM	6 kV / 6 kV		for LSB5A 500W, LSB5R models: 10 kV / 10 kV		for LSB5BHV models: 6 kV / 10 kV				
Dimming compatible controls for LSB5A		Dimming compatible controls for LSB5B		Dimming compatible controls for LSB5R					
Brand	Eaton	Lutron	Leviton	Eaton	Lutron	Leviton	Wattstopper Legrand	Cooper Eaton	
Models	SF10P	DVCL-153P	IP710-DLZ	SF10P	NTSTV-DV	DVSTV	AWSMT-7DW	ADF120277	DF10P-C1
	DF10P	NTSTV-DV	DDMX1		NTFTV	DVTV	DD710-BDZ		
		NTFTV	DDL06						

For most up-to-date spec sheets please refer to [asd-lighting.com](http://asd-lighting.com)





# LED AREA LIGHT WITH Q-BASE AND PHOTOCCELL

## PRO series

### Effective projected area (EPA) ratings

Fixture quantity	Single			Double 180°			Double 90°			Triple 90°			Triple 120°			Quad 90°		
	LSB5A	LSB5B	LSB5R	LSB5A	LSB5B	LSB5R	LSB5A	LSB5B	LSB5R	LSB5A	LSB5B	LSB5R	LSB5A	LSB5B	LSB5R	LSB5A	LSB5B	LSB5R
100W	-	-	0.89 ft <sup>2</sup>	-	-	1.78 ft <sup>2</sup>	-	-	1.78 ft <sup>2</sup>	-	-	2.67 ft <sup>2</sup>	-	-	2.67 ft <sup>2</sup>	-	-	3.56 ft <sup>2</sup>
150-200W	0.28 ft <sup>2</sup>	1.16 ft <sup>2</sup>	-	0.52 ft <sup>2</sup>	2.32 ft <sup>2</sup>	-	0.52 ft <sup>2</sup>	2.32 ft <sup>2</sup>	-	0.8 ft <sup>2</sup>	3.48 ft <sup>2</sup>	-	0.74 ft <sup>2</sup>	3.48 ft <sup>2</sup>	-	0.8 ft <sup>2</sup>	4.64 ft <sup>2</sup>	-
240-300W	0.33 ft <sup>2</sup>	1.686 ft <sup>2</sup>	-	0.61 ft <sup>2</sup>	3.372 ft <sup>2</sup>	-	0.69 ft <sup>2</sup>	3.372 ft <sup>2</sup>	-	0.85 ft <sup>2</sup>	5.058 ft <sup>2</sup>	-	0.83 ft <sup>2</sup>	5.058 ft <sup>2</sup>	-	0.85 ft <sup>2</sup>	6.744 ft <sup>2</sup>	-
500W	-	2.98 ft <sup>2</sup>	-	-	5.96 ft <sup>2</sup>	-	-	5.96 ft <sup>2</sup>	-	-	8.94 ft <sup>2</sup>	-	-	8.94 ft <sup>2</sup>	-	-	11.92 ft <sup>2</sup>	-

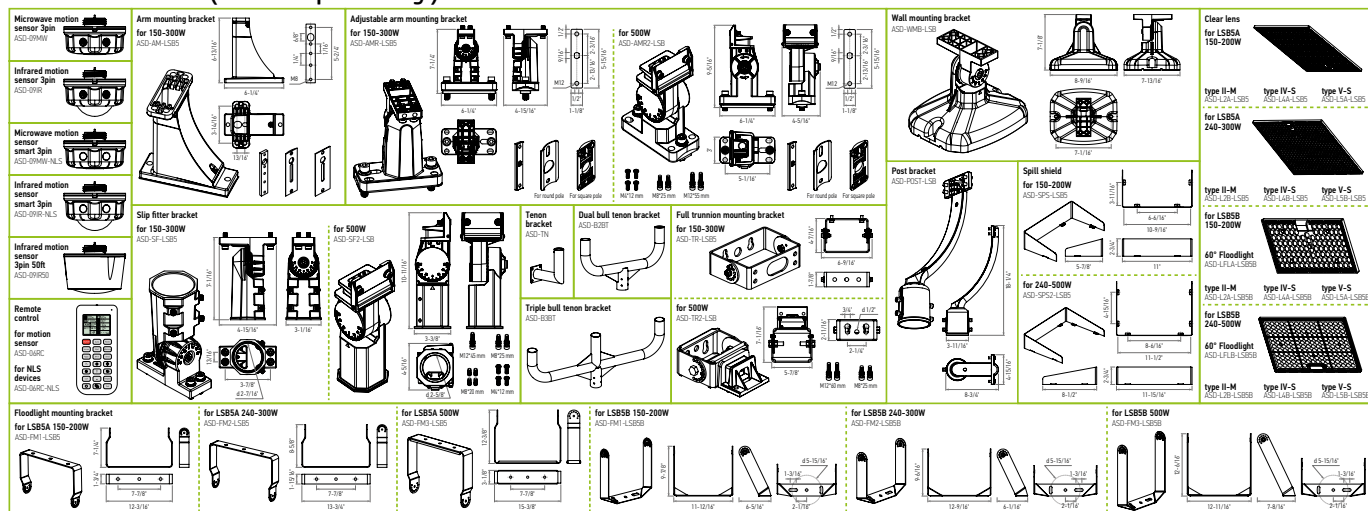
### Regular and voluntary certifications

5-year limited warranty  
 DesignLights Consortium (DLC) listed (Classification: Premium) Main: Outdoor luminaires;  
 General application: High/Very high output (Very high output for models from 240W and higher);  
 Primary use: Outdoor pole/arm-mounted area and roadway/decorative luminaires  
 UL certified E473804

### PACKAGE CONTENTS:

Description	Quantity
LED Area Light with Q-base and photocell	1
Box	1

### ACCESSORIES (sold separately):



### ACCESSORY COMPATIBILITY LIST:

Accessories	Models																			
	ASD-09MW	ASD-09R	ASD-09NLS	ASD-AMF	ASD-AMR	ASD-SF	ASD-SF2	ASD-TN	ASD-TN	ASD-B2B1	ASD-B3B1	ASD-TR	ASD-TR2	ASD-FM1	ASD-FM2	ASD-FM3	ASD-FM3	ASD-FM3	ASD-FM3	ASD-FM3
Microwave motion sensor 3pin	•	•	•	•	•	•	•	•	•	•	•	•	•	•	•	•	•	•	•	•
Infrared motion sensor 3pin	•	•	•	•	•	•	•	•	•	•	•	•	•	•	•	•	•	•	•	•
Microwave motion sensor smart 3pin	•	•	•	•	•	•	•	•	•	•	•	•	•	•	•	•	•	•	•	•
Infrared motion sensor smart 3pin	•	•	•	•	•	•	•	•	•	•	•	•	•	•	•	•	•	•	•	•
Arm mounting bracket	•	•	•	•	•	•	•	•	•	•	•	•	•	•	•	•	•	•	•	•
Adjustable arm mounting bracket for 150-300W	•	•	•	•	•	•	•	•	•	•	•	•	•	•	•	•	•	•	•	•
Adjustable arm mounting bracket for 500W	•	•	•	•	•	•	•	•	•	•	•	•	•	•	•	•	•	•	•	•
Slip fitter bracket for 150-300W	•	•	•	•	•	•	•	•	•	•	•	•	•	•	•	•	•	•	•	•
Slip fitter bracket for 500W	•	•	•	•	•	•	•	•	•	•	•	•	•	•	•	•	•	•	•	•
Tenon bracket	•	•	•	•	•	•	•	•	•	•	•	•	•	•	•	•	•	•	•	•
Dual bull tenon bracket	•	•	•	•	•	•	•	•	•	•	•	•	•	•	•	•	•	•	•	•
Triple bull tenon bracket	•	•	•	•	•	•	•	•	•	•	•	•	•	•	•	•	•	•	•	•
Full trunnion mounting bracket for 150-300W	•	•	•	•	•	•	•	•	•	•	•	•	•	•	•	•	•	•	•	•
Full trunnion mounting bracket for 500W	•	•	•	•	•	•	•	•	•	•	•	•	•	•	•	•	•	•	•	•
Floodlight mounting bracket for 150-200W	•	•	•	•	•	•	•	•	•	•	•	•	•	•	•	•	•	•	•	•
Floodlight mounting bracket for 150-200W	•	•	•	•	•	•	•	•	•	•	•	•	•	•	•	•	•	•	•	•
Floodlight mounting bracket for 240-300W	•	•	•	•	•	•	•	•	•	•	•	•	•	•	•	•	•	•	•	•
Floodlight mounting bracket for 240-300W	•	•	•	•	•	•	•	•	•	•	•	•	•	•	•	•	•	•	•	•
Floodlight mounting bracket for 500W	•	•	•	•	•	•	•	•	•	•	•	•	•	•	•	•	•	•	•	•
Floodlight mounting bracket for 500W	•	•	•	•	•	•	•	•	•	•	•	•	•	•	•	•	•	•	•	•
Wall mounting bracket	•	•	•	•	•	•	•	•	•	•	•	•	•	•	•	•	•	•	•	•
Post bracket	•	•	•	•	•	•	•	•	•	•	•	•	•	•	•	•	•	•	•	•
Spill shield for 150-200W	•	•	•	•	•	•	•	•	•	•	•	•	•	•	•	•	•	•	•	•
Spill shield for 240-500W	•	•	•	•	•	•	•	•	•	•	•	•	•	•	•	•	•	•	•	•
Clear lens for 150-200W	•	•	•	•	•	•	•	•	•	•	•	•	•	•	•	•	•	•	•	•
Clear lens for 150-200W	•	•	•	•	•	•	•	•	•	•	•	•	•	•	•	•	•	•	•	•
60° Floodlight Clear lens for 150-200W	•	•	•	•	•	•	•	•	•	•	•	•	•	•	•	•	•	•	•	•
Clear lens for 240-300W	•	•	•	•	•	•	•	•	•	•	•	•	•	•	•	•	•	•	•	•
Clear lens for 240-500W	•	•	•	•	•	•	•	•	•	•	•	•	•	•	•	•	•	•	•	•
60° Floodlight Clear lens for 240-500W	•	•	•	•	•	•	•	•	•	•	•	•	•	•	•	•	•	•	•	•

For most up-to-date spec sheets please refer to [asd-lighting.com](http://asd-lighting.com)





# LED AREA LIGHT WITH Q-BASE AND PHOTOCELL

PRO series

## MOTION SENSOR INFORMATION

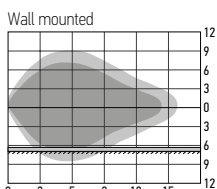
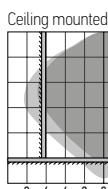
REMOTE CONTROL **ASD-06RC** **ASD-06RC-NLS** sold separately:



Button	Remarks	Button	Remarks	Button	Remarks
<b>ON/OFF</b>	<b>ON/OFF</b> Turn the sensor ON/OFF.	<b>M H</b>	<b>Mounting height</b> Adjust detection area/sensitivity levels according to real installation situations, higher or lower.	<b>↑</b>	<b>Up</b> The main functional buttons to adjust the factors to desired level.
<b>Auto</b>	<b>Auto</b> Enter "sensor mode" and perform previous settings.	<b>Send</b>	<b>Send</b> Memorize and send out the previous setting of individual parameters.	<b>↓</b>	<b>Down</b> Press + - button to dim light directly in non-detection mode.
<b>Reset</b>	<b>Reset</b> Enter "sensor mode" and perform the default settings.	<b>%</b>	<b>Detection range</b> Also known as "sensitivity", 100 % means the highest sensitivity and longest distance. Use this button and the + - buttons to adjust.	<b>CCT</b>	<b>CCT Selectable</b> Not applicable to this product.
<b>Scenes</b>	<b>Scenes</b> Shows current settings saved in remote.	<b>☀</b>	<b>Daylight sensor</b> The preset lux level at which motion will be detected. Use this button and the + - buttons to adjust.	<b>POWER</b>	<b>Power</b> Adjust brightness in both ON/OFF mode & sensor mode, minimum 10%, max 100%, each time this button is pressed it changes by 5%.
<b>Start</b>	<b>Start</b> Press this to begin scene setup.	<b>⏸</b>	<b>Stand-by dimming</b> After hold time, the light will dim from 100 % to optional standby dimming levels. Use this button and the + - buttons to adjust.	<b>⏸</b>	<b>Reserved Button</b> Not applicable to this product.
<b>Memory</b>	<b>Memory</b> Saves the scene settings.	<b>⏸</b>	<b>Hold time</b> The period that light will stay illuminated 100 % after no motion is detected. Use this button and the + - buttons to adjust.	<b>☀</b>	<b>Daylight Harvesting</b> Daylight harvesting function enabled or disabled.
<b>Apply</b>	<b>Apply</b> Applies current scene settings to the fixture.	<b>⏸</b>	<b>Stand-by period</b> The period after holdtime, during which the light keeps standby dimming level. Use this button and the + - buttons to adjust.	<b>Test</b>	<b>Test button</b> Press this button to test the sensor; it will temporarily change the hold time to 2s. This setting cannot be saved.

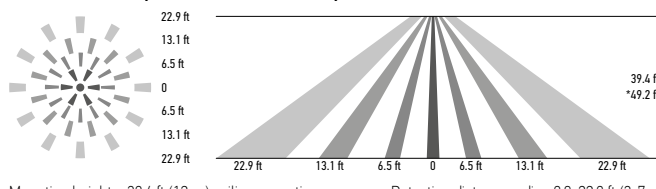


### ASD-09MW, ASD-09MW-NLS:



- Highest mounting height is 49.2 ft (15 m)
  - This figure indicates the maximum distance at the highest mounting height with 100 % sensitivity.
- Well detected area  
 Possibly detected area

### ASD-09IR, ASD-09IR50, ASD-09IR-NLS:



Mounting height < 39.4 ft (12 m) ceiling mounting  
 \* for ASD-09IR50 < 49.2 ft (15 m)  
 Detection distance radius 9.8-22.9 ft (3-7 m)

#### User notes:

- Microwaves can penetrate walls or glass thinner than 0.8" but will be impaired if thicker than 0.8".
- The driver voltage shall be stable and float within 10 %.
- Detection area will be affected by speed of motion, mounting height and movement volume.
- Conduct testing with adequate ambient lighting for best results.
- Dimming performance differs when connected to different drivers; if the driver can't completely turn OFF, sensor can't either.
- The first time powering ON the sensor, light will be ON 100% for about 10S then dims to standby level or OFF.

#### Installation precautions:

- Designed for ceiling mount installation. If installing on a side wall, adjust the sensitivity settings accordingly, as it will become more sensitive.
- Make sure the microwave module is completely exposed.
- The detection surface of the sensor module should be installed facing the detection area.

#### Application environment:

- Suitable for indoor application, partial/completely outdoor environment conditions might trigger the sensor.
- Shall be mounted securely, to avoid any false triggers caused by movement of the fixture itself.
- Keep the sensor module away from AC input and DC output to avoid high/low frequency signal interference.

#### User notes:

- The driver voltage shall be stable and float within 10%.
- Detection area options may not function as expected because they depend on the Fresnel lens, which physically determines their operation.
- Detection distance performance works better when moving parallel to the sensor as opposed to towards it.
- Conduct testing with adequate ambient lighting for best results.
- Dimming performance differs when connected to different drivers; if the driver can't completely turn OFF, sensor can't either.
- The first time powering ON the sensor, light will be ON 100% for about 45S then dims to standby level or OFF.

#### Installation precautions:

- PIR sensor can't be placed inside any material, fresnel lens must be completely exposed in air.
- Fresnel lens of the PIR sensor must be lower than the lighting fixture.
- Designed for ceiling mount installation. If installing on a side wall, adjust the sensitivity settings accordingly, as it will become more sensitive.

#### Application environment:

- Suitable for indoor application, partial/completely outdoor environment conditions might trigger the sensor.
- The PIR sensor is not suitable for environments with sudden changes in temperature or airflow.
- Not suitable environment if there's shelves between the sensor and target area.
- Shall be mounted securely, to avoid any false triggers caused by movement of the fixture itself.

Specifications	Models: ASD-09MW, ASD-09MW-NLS	Models: ASD-09IR, ASD-09IR-NLS	Models: ASD-09IR50
Operating voltage	10-15 V		
Operating current	< 30 mA	< 15 mA	< 30 mA
Detection area	25 %/50 %/75 %/100 %		
Hold time	Remote control: 5 s/30 s/1 min/3 min/5 min/10 min/20 min/30 min	Built-in switch: 5 s/1 min/5 min/10 min	
Daylight threshold	2 lux (0.2 fc)/10 lux (0.9 fc)/30 lux (2.8 fc)/50 lux (4.7 fc)/80 lux (7.4 fc)/120 lux (11.2 fc)/200 lux (18.6 fc)/250 lux (23.2 fc)/300 lux (27.9 fc)/350 lux (32.5 fc)/400 lux (37.2 fc)/disable		
Standby period	0 s/10 s/30 s/1 min/5 min/10 min/30 min/60 min/+ ∞		
Standby dimming level	Remote control: 10 %/20 %/30 %/50 %	Built-in switch: 0 %/10 %/30 %/50 %	
Mounting height	max 49.2 ft (15 m)	≤ 39.4 ft (12 m)	max 49.2 ft (15 m)
Detection range	≥ 9 ft (3 m)		
Operating frequency	5.8 GHz ± 75 MHz	-	-
Transmitting power	< 0.3 mW	-	-

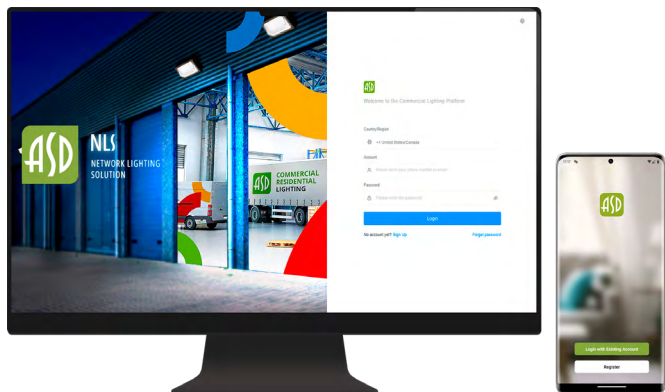
### DEFAULT SETTING:

Specifications	
Detection area	100 %
Hold time	10 min
Daylight threshold	Disable
Stand-by period	0 s
Stand-by dimming level	10 %

For most up-to-date spec sheets please refer to [asd-lighting.com](http://asd-lighting.com)



# ASD NLS - SMART LIGHTING MADE EFFORTLESS



ASD NLS is a professional-grade smart control application designed to manage and control lighting fixtures in commercial properties. With ASD NLS, you can conveniently control your lights from your smartphone or PC, anytime and anywhere.

You can group fixtures by rooms, floors and objects, and create schedules based on day and time. You can also grant permanent or temporary permissions to employees and guests with different access levels. Our smart platform enables you to monitor energy usage statistics, view the status of each fixture, and much more.

► For **ASD-NLS sensors** download ASD NLS app and add the fixture to it according to the manual (download manuals and app from the links or scan the QR codes on the right).



[Desktop manual](#)



[Smartphone manual](#)



**ASD-09MW-NLS**  
Microwave motion sensor smart 3pin



**ASD-09IR-NLS**  
Infrared motion sensor smart 3pin 39ft



[ASD NLS app download Android](#)



[ASD NLS app download iOS](#)



## FIXTURE CONTROL

Set brightness, standby time and dimming level, or apply scenes and schedules.



## SCHEDULING

Set a variety of customizable start / end actions based on time of day and days of the week.



## ADVANCED AREA MANAGEMENT

Create and customize projects for different types of areas, buildings, floors and zones.



## CONTROL PERMISSIONS

Give your staff or installers control over the lighting.



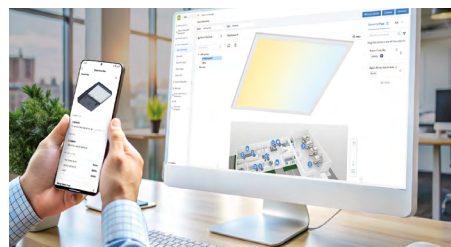
## ADVANCED ENERGY CONSUMPTION

Monitor equipment status and receive daily reports.



## PROJECT OVERVIEW

Monitor device status and daily reports.



For most up-to-date spec sheets please refer to [asd-lighting.com](http://asd-lighting.com)





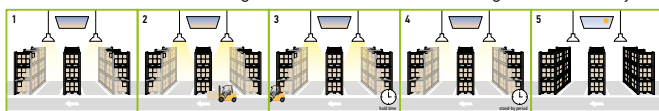


# LED AREA LIGHT WITH Q-BASE AND PHOTOCELL

## PRO series

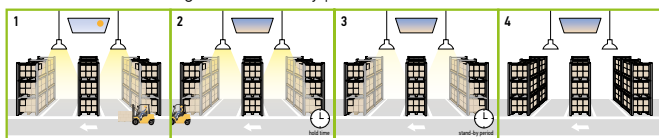
### WITH DUSK/DAWN FUNCTION:

1. With insufficient ambient brightness, sensor turns on light and keeps it at standby dimming level even if there is no motion or presence.
2. When sensor detects motion or presence it will bring the light level up to 100%.
3. After motion is no longer detected, fixture remains at 100% for hold time.
4. After the preset hold time period, it will dim to the standby dimming level and maintain it indefinitely.
5. With sufficient ambient brightness, sensor will turn OFF light automatically.



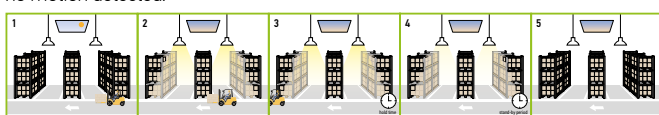
### WITH DAYLIGHT DISABLED:

1. Sensor turns ON light when motion is detected.
2. Light will stay on after detecting motion for the desired hold time.
3. Sensor dims light to standby dimming level after hold time if there is still no motion.
4. Sensor turns OFF light after standby period.



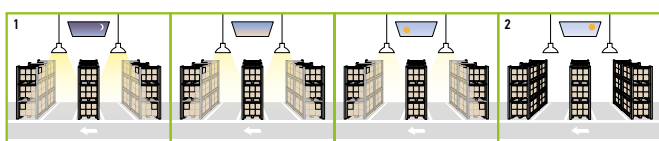
### WITH DAYLIGHT THRESHOLD:

1. With sufficient daylight, the light remains OFF even after motion is detected.
2. With insufficient daylight, the sensor turns light ON when motion is detected.
3. After there's no motion detected, the sensor keeps light ON 100% for holdtime.
4. After holdtime, sensor dims light to standby dimming level for standby period. If the standby period has been set as 0s, sensor turns light OFF automatically after holdtime.
5. The sensor turns OFF light automatically after the standby period when there's no motion detected.



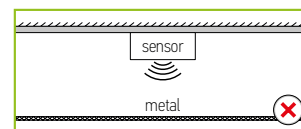
### DAYLIGHT HARVESTING:

1. When the ambient brightness is lower than the preset lux level, the sensor will automatically turn on the light and adjust the dimming according to changes in ambient brightness. As it gets darker outside, the fixtures will brighten, and as it gets brighter outside, the fixtures will dim.
2. When the ambient brightness exceeds the preset lux level, the light will turn OFF.

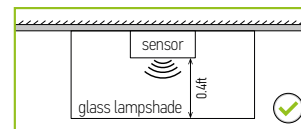


### MICROWAVE MOTION SENSOR:

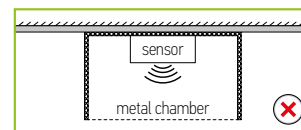
To avoid blocking the microwave emission, the microwave sensor can not be covered with metal materials, be sprayed with a coating of metal components, or have attached metal material or stickers etc.



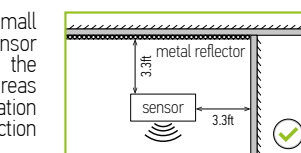
The distance between the antenna and the glass (dielectric material) should be no less than 0.4 ft when the sensor is within the glass lampshade. Otherwise, the microwave motion sensor will not penetrate the glass easily.



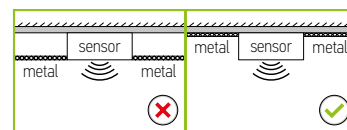
Avoid placing the sensor inside a metal chamber, this may cause a mis-trigger.



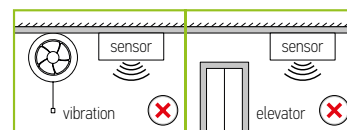
The sensor should not be placed in a small confined space. To avoid increasing the sensor detection range or abnormal operation, the sensor should be kept away from large areas of metal and glass reflectors (separation distance at least 3.3 ft). Reduce the detection area setting.



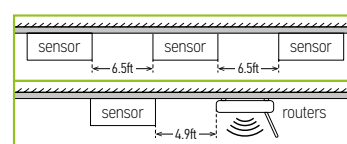
To avoid affecting the microwave signal transmission, the microwave antenna should be higher than the surrounding metal surface.



Any vibration or movement may trigger the sensor. Ensure the sensor is far from any constant movement.

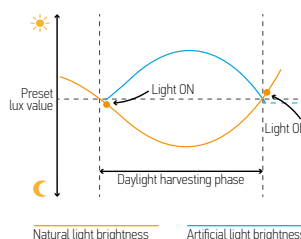


There must be at least 6.5ft between microwave sensors; There must be at least 4.9ft between the sensor and other wireless devices such as routers to avoid possible radio interference.



### DAYLIGHT HARVESTING SETTING:

1. Adjust "daylight" value higher than 50lux.
2. Preset "standby period" 0S.
3. Press "daylight harvesting" button on remote control to activate.







# LED AREA LIGHT WITH Q-BASE AND PHOTOCELL

PRO series

## BUILT-IN PHOTOCELL INFORMATION

Specifications	
Light level to turn ON	≤ 80 lux (≤ 7.4 fc)
Light level to turn OFF	≥ 150 lux (≥ 13.9 fc)
Operating temperature	-40°F to 140°F (-40°C to 60°C)

The fixtures with a built-in photocell automatically turn off during daylight hours, if you do not need this function, please switch it off.

## INSTALLATION GUIDE

### IMPORTANT SAFETY INFORMATION:

Please read all the instructions below before installation.

- ▶ Make sure that the supply voltage corresponds to the rated product voltage.
- ▶ The product must be installed by a qualified electrician in accordance with the National Electrical Code and corresponding local codes.
- ▶ If the product is damaged, do not use it.

### ⚠ WARNING

**Risk of personal injury** – read and follow all warnings and installation instructions. Keep or give to the owner for future reference.

**Risk of cuts:** Wear gloves to prevent cuts or abrasions when removing from carton, handling, installing, and maintaining this product.

**Risk of electric shock:** This product must be installed in accordance with the applicable installation code by a person familiar with the construction and operation of the product and the hazards involved.

**Risk of Fire:** Minimum 194°F supply conductors. Consult a qualified electrician to ensure correct branch circuit conductor.

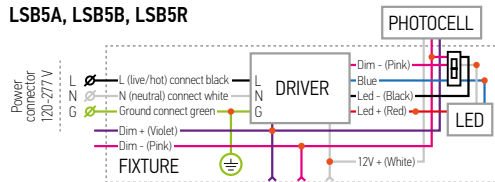
ASD® assumes no responsibility for claims arising out of improper or careless installation or handling of this product.

\* The regular voltage 120-277 V fixtures can be alternatively powered without neutral by two-phase circuit with phase-to-phase voltage of 208 V (L1-120 V & L2-120 V).

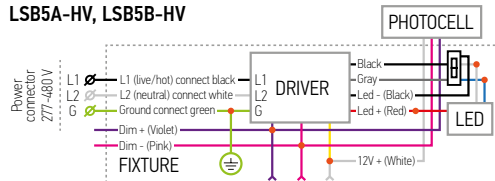
**WARNING:** Phase-to-phase voltage should be less than 277 V (160 V per each phase) and more than 120 V (70 V per each phase)! Do not confuse Regular Voltage fixtures of 120-277 V with High Voltage ones of 277-480 V!

### ELECTRICAL SCHEMATIC DIAGRAM:

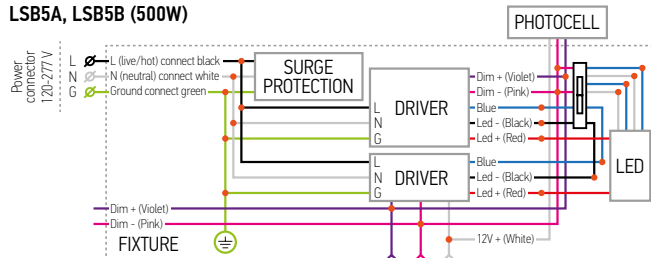
LSB5A, LSB5B, LSB5R



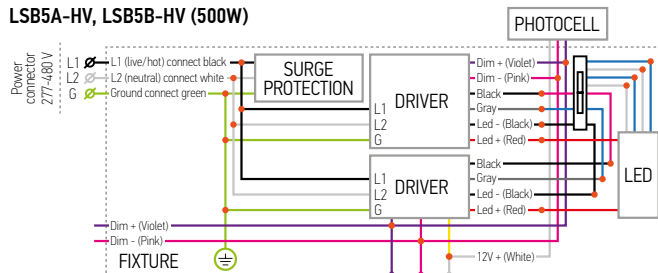
LSB5A-HV, LSB5B-HV



LSB5A, LSB5B (500W)



LSB5A-HV, LSB5B-HV (500W)





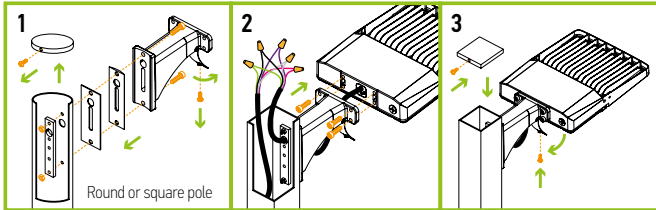
# LED AREA LIGHT WITH Q-BASE AND PHOTOCELL

PRO series

## ARM MOUNTING BRACKET ASD-AM-LSB5

sold separately:

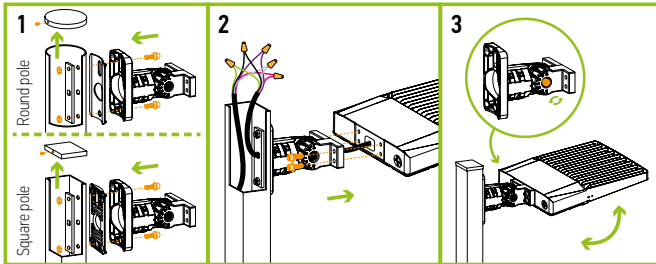
1. Open up the door on the arm bracket (1 screw). Install the mounting arm onto the pole (2 bolts). Make sure the silicone gaskets form a tight seal.
2. Thread the cord from the fixture through the bracket into the pole and tighten the four M8 screws on the body of the light. Wire in accordance with wiring schematic.
3. Close the door on the arm bracket (1 screw).



## ADJUSTABLE ARM MOUNTING BRACKET

ASD-AMR-LSB5 ASD-AMR2-LSB sold separately:

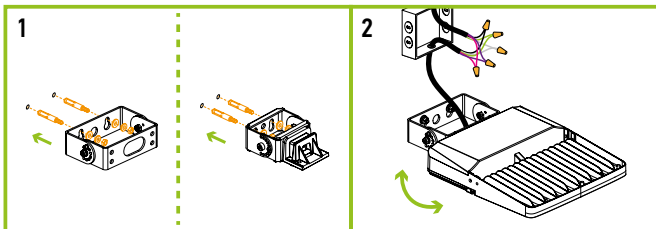
1. Open up the door on the arm bracket (1 screw). Install the mounting arm onto the pole (2 bolts). Make sure the silicone gaskets form a tight seal. Choose gasket depending on the shape of the pole (round or flat).
2. Thread the cord from the fixture through the bracket into the pole and tighten the four M8 screws on the body of the light. Wire in accordance with wiring schematic.
3. Adjust the fixture angle with the large hex bolt on the side of the bracket if necessary.



## FULL TRUNNION MOUNTING BRACKET

ASD-TR-LSB5 ASD-TR2-LSB sold separately:

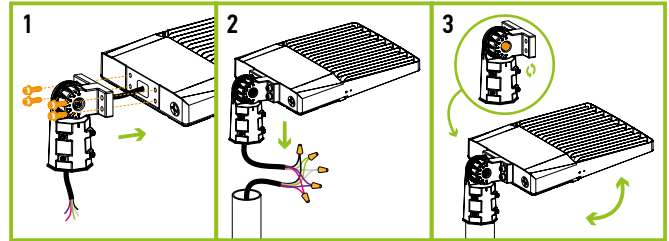
1. Drill holes on the mounting surface matching in size to the holes on the arm. Secure the bracket on the wall with screws. Pull wires through mount, secure fixture to the bracket.
2. Wire the AC power into the water tight junction box as shown in the wiring schematic diagram. Adjust the screw position to get desired angle when necessary.



## SLIP FITTER MOUNTING BRACKET

ASD-SF-LSB5 ASD-SF2-LSB sold separately:

1. Thread the wire through the slip fitter and secure it to the fixture with four screws.
2. Make AC connections in accordance with wiring diagram.
3. If necessary adjust the fixture angle with the large hex bolt on the side of the slip fitter.



The wiring is inside the pole, the side is sealed with a rubber ring and secured with screws, preventing water from getting inside the fixture.

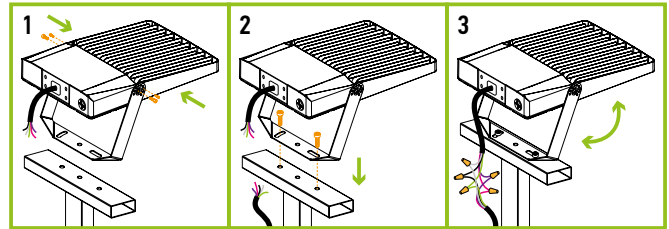
## FLOODLIGHT MOUNTING BRACKET

ASD-FM1-LSB5 ASD-FM2-LSB5 ASD-FM3-LSB5

ASD-FM1-LSB5B ASD-FM2-LSB5B ASD-FM3-LSB5B

sold separately:

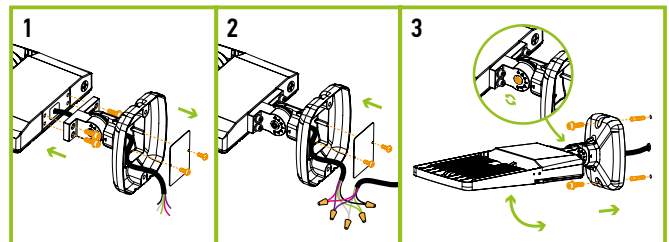
1. Drill holes on the mounting surface corresponding to the holes in the arm. Attach fixture to bracket with 2 screws.
2. Align bracket holes with mounting surface holes and secure with 2 screws.
3. Wire in accordance with the wiring schematic. Seal the connections with the back plate of the fixture. Adjust fixture angle as needed.



## WALL MOUNTING BRACKET ASD-WMB-LSB

sold separately:

1. Take the bracket apart. Make two holes. Put two dowels and bolts in the wall. Put the wire from the bracket into the lamp. Put 4 screws on the lamp body.
2. Connect the wire to the connecting point as shown on an ELECTRICAL SCHEMATIC DIAGRAM, install the cover plate, and secure the screws.
3. Put the bracket on the bolt with screws. Turn the big screws to adjust the angle.



For most up-to-date spec sheets please refer to [asd-lighting.com](http://asd-lighting.com)

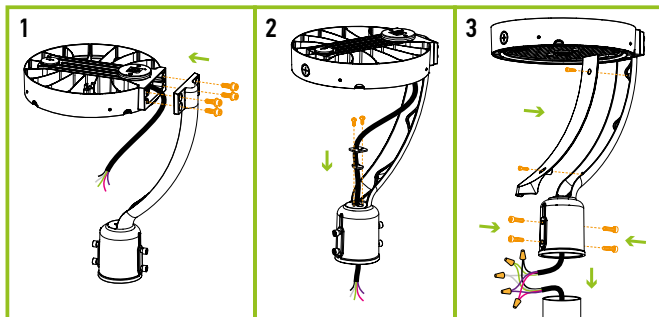


# LED AREA LIGHT WITH Q-BASE AND PHOTOCELL

PRO series

## POST BRACKET **ASD-POST-LSB5** sold separately:

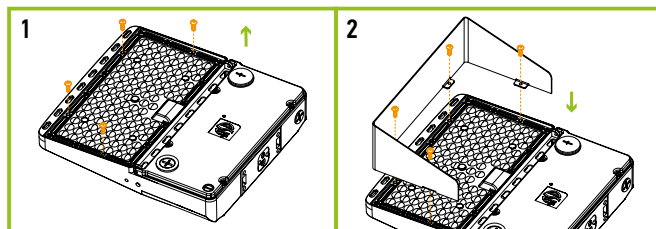
1. Put the GM bracket on the lamp. Use tools to fix the screws.
2. Put the AC/dim wire through the hole in the plate, the ring, and the base. Use tools to tighten the screws on the plate.
3. Put the cover plate on the base of the bracket and tighten the screws with tools. Make sure the wires are right. Put the base of the GM on the pole and tighten the screws with tools.



## SPILL SHIELD INSTALLATION

**ASD-SPS-LSB5** **ASD-SPS2-LSB5** sold separately:

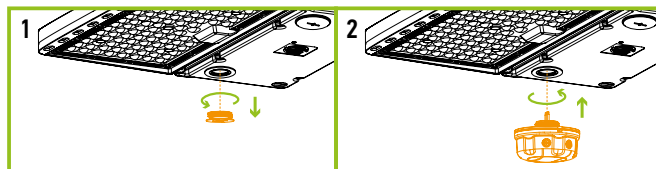
1. Take out 4 screws from the front of the 150-200W fixture, 6 screws for 240-500W fixture.
2. Attach the visor to the lens and secure it with new screws. For 150-200W fixtures, use ASD-SPS-LSB5 and 4 bolts; for 240-500W fixtures, use ASD-SPS2-LSB5 and 6 bolts. Ensure all screws are tightened securely.



## MOTION SENSOR INSTALLATION

**ASD-09MW** **ASD-09IR** **ASD-09IR50**  
**ASD-09MW-NLS** **ASD-09IR-NLS** sold separately:

1. Unscrew the microwave sensor base cap.
2. Insert and twist the sensor until it is tight on the base surface.

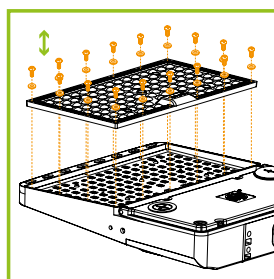


## LENS INSTALLATION

<b>ASD-L2A-LSB5</b>	<b>ASD-L4A-LSB5</b>	<b>ASD-L5A-LSB5</b>
<b>ASD-L2B-LSB5</b>	<b>ASD-L4B-LSB5</b>	<b>ASD-L5B-LSB5</b>
<b>ASD-L2A-LSB5B</b>	<b>ASD-L4A-LSB5B</b>	<b>ASD-L5A-LSB5B</b>
<b>ASD-L2B-LSB5B</b>	<b>ASD-L4B-LSB5B</b>	<b>ASD-L5B-LSB5B</b>
<b>ASD-LFLA-LSB5B</b>	<b>ASD-LFLB-LSB5B</b>	sold separately:

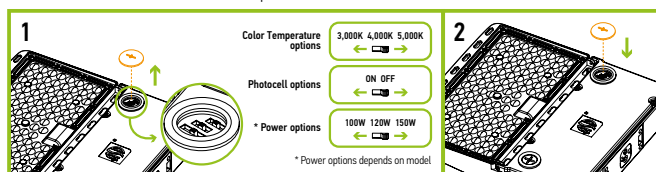
1. Unscrew all screws from the original lens (T3-M) on the housing.
2. Install the rubber ring on new lens (T4/T5-M, sold separately).
3. Place the lens on the housing and make sure it fits the LEDs correctly.
4. Tighten all the screws back.

Lens	
150W, 200W	1 lens (L2A, L4A, L5A, LFLA)
240W, 300W	1 lens (L2B, L4B, L5B, LFLB)
500W	-



## POWER, COLOR TEMPERATURE AND PHOTOCELL SETTINGS:

1. Open knock-out cap in the front panel of the fixture. Select needed power, color temperature and on/off photocell mode with a simple switch.
2. Then close the knock-out cap back.



For most up-to-date spec sheets please refer to [asd-lighting.com](http://asd-lighting.com)

ASD LIGHTING CORP

E-mail: [orders@asd-lighting.com](mailto:orders@asd-lighting.com) | Web site: [www.asd-lighting.com](http://www.asd-lighting.com)





# LED AREA LIGHT WITH Q-BASE AND PHOTOCCELL

PRO series

## ORDERING INFORMATION

Model	UPC	Pcs. per carton	Carton size	Carton weight
<b>LSB5A-PRO 170lm/W</b>				
ASD-LSB5A-PRO-150WH	810128113984	1	16.9" x 11.8" x 4.3"	8.7 lbs
ASD-LSB5A-PRO-150SL	810128111843	1	16.9" x 11.8" x 4.3"	8.7 lbs
ASD-LSB5A-PRO-150BR	810128112413	1	16.9" x 11.8" x 4.3"	8.7 lbs
ASD-LSB5A-PRO-150BK	810128111850	1	16.9" x 11.8" x 4.3"	8.7 lbs
ASD-LSB5A-PRO-200WH	810128113151	1	16.9" x 11.8" x 4.3"	8.8 lbs
ASD-LSB5A-PRO-200SL	810128111874	1	16.9" x 11.8" x 4.3"	8.8 lbs
ASD-LSB5A-PRO-200BR	810128112437	1	16.9" x 11.8" x 4.3"	8.8 lbs
ASD-LSB5A-PRO-200BK	810128111867	1	16.9" x 11.8" x 4.3"	8.8 lbs
ASD-LSB5A-PRO-240WH	810128113991	1	20.9" x 13.4" x 4.3"	11.2 lbs
ASD-LSB5A-PRO-240SL	810128111881	1	20.9" x 13.4" x 4.3"	11.2 lbs
ASD-LSB5A-PRO-240BR	810128110969	1	20.9" x 13.4" x 4.3"	11.2 lbs
ASD-LSB5A-PRO-240BK	810128111898	1	20.9" x 13.4" x 4.3"	11.2 lbs
ASD-LSB5A-PRO-300WH	810128113168	1	20.9" x 13.4" x 4.3"	11.5 lbs
ASD-LSB5A-PRO-300SL	810128111904	1	20.9" x 13.4" x 4.3"	11.5 lbs
ASD-LSB5A-PRO-300BR	810128112420	1	20.9" x 13.4" x 4.3"	11.5 lbs
ASD-LSB5A-PRO-300BK	810128111911	1	20.9" x 13.4" x 4.3"	11.5 lbs
ASD-LSB5A-PRO-500WH	810128114004	1	28.4" x 15" x 4.3"	19.8 lbs
ASD-LSB5A-PRO-500SL	810128111935	1	28.4" x 15" x 4.3"	19.8 lbs
ASD-LSB5A-PRO-500BR	810128110983	1	28.4" x 15" x 4.3"	19.8 lbs
ASD-LSB5A-PRO-500BK	810128111928	1	28.4" x 15" x 4.3"	19.8 lbs
<b>LSB5A-HV-PRO HIGH VOLTAGE 170lm/W</b>				
ASD-LSB5A-HV-PRO-150BR	810128110990	1	16.9" x 11.8" x 4.3"	8.8 lbs
ASD-LSB5A-HV-PRO-240BR	810128111003	1	20.9" x 13.4" x 4.3"	11.2 lbs
ASD-LSB5A-HV-PRO-300BR	810128111010	1	20.9" x 13.4" x 4.3"	11.5 lbs
ASD-LSB5A-HV-PRO-500BR	810128111027	1	28.4" x 15" x 4.3"	19.8 lbs

Model	UPC	Pcs. per carton	Carton size	Carton weight
<b>LSB5B-PRO 170lm/W</b>				
ASD-LSB5B-PRO-150WH	810128118736	1	14.6" x 13.4" x 4.7"	6.8 lbs
ASD-LSB5B-PRO-150SL	810128118354	1	14.6" x 13.4" x 4.7"	6.8 lbs
ASD-LSB5B-PRO-150BR	810128116046	1	14.6" x 13.4" x 4.7"	6.8 lbs
ASD-LSB5B-PRO-150BK	810128118712	1	14.6" x 13.4" x 4.7"	6.8 lbs
ASD-LSB5B-PRO-200WH	810128118767	1	14.6" x 13.4" x 4.7"	6.8 lbs
ASD-LSB5B-PRO-200SL	810128118750	1	14.6" x 13.4" x 4.7"	6.8 lbs
ASD-LSB5B-PRO-200BR	810128116053	1	14.6" x 13.4" x 4.7"	6.8 lbs
ASD-LSB5B-PRO-200BK	810128118743	1	14.6" x 13.4" x 4.7"	6.8 lbs
ASD-LSB5B-PRO-240WH	810128118378	1	18.9" x 14.2" x 4.7"	8.2 lbs
ASD-LSB5B-PRO-240SL	810128118781	1	18.9" x 14.2" x 4.7"	8.2 lbs
ASD-LSB5B-PRO-240BR	810128116060	1	18.9" x 14.2" x 4.7"	8.2 lbs
ASD-LSB5B-PRO-240BK	810128118361	1	18.9" x 14.2" x 4.7"	8.2 lbs
ASD-LSB5B-PRO-300WH	810128118828	1	18.9" x 14.2" x 4.7"	8.2 lbs
ASD-LSB5B-PRO-300SL	810128118811	1	18.9" x 14.2" x 4.7"	8.2 lbs
ASD-LSB5B-PRO-300BR	810128116077	1	18.9" x 14.2" x 4.7"	8.2 lbs
ASD-LSB5B-PRO-300BK	810128118804	1	18.9" x 14.2" x 4.7"	8.2 lbs
ASD-LSB5B-PRO-500WH	810128118859	1	31.3" x 14.2" x 4.9"	15.7 lbs
ASD-LSB5B-PRO-500SL	810128118842	1	31.3" x 14.2" x 4.9"	15.7 lbs
ASD-LSB5B-PRO-500BR	810128116886	1	31.3" x 14.2" x 4.9"	15.7 lbs
ASD-LSB5B-PRO-500BK	810128118835	1	31.3" x 14.2" x 4.9"	15.7 lbs
<b>LSB5BHV-PRO HIGH VOLTAGE 170lm/W</b>				
ASD-LSB5BHV-PRO-150BR	810128116084	1	14.6" x 13.4" x 4.7"	6.8 lbs
ASD-LSB5BHV-PRO-200BR	810128116893	1	14.6" x 13.4" x 4.7"	6.8 lbs
ASD-LSB5BHV-PRO-240BR	810128116091	1	18.9" x 14.2" x 4.7"	8.2 lbs
ASD-LSB5BHV-PRO-300WH	810128116114	1	18.9" x 14.2" x 4.7"	8.2 lbs
ASD-LSB5BHV-PRO-300SL	810128116121	1	18.9" x 14.2" x 4.7"	8.2 lbs
ASD-LSB5BHV-PRO-300BR	810128116107	1	18.9" x 14.2" x 4.7"	8.2 lbs
ASD-LSB5BHV-PRO-500BR	810128116909	1	31.3" x 14.2" x 4.9"	15.7 lbs

Model	UPC	Pcs. per carton	Carton size	Carton weight
<b>LSB5R-PRO 170lm/W</b>				
ASD-LSB5R-PRO-100BK	810128117647	1	13.4" x 13.4" x 4.9"	6.6 lbs
ASD-LSB5R-PRO-100BK-POST	810128117654	1	19.5" x 16.7" x 5.7"	9.7 lbs

For most up-to-date spec sheets please refer to [asd-lighting.com](http://asd-lighting.com)

ASD LIGHTING CORP

E-mail: [orders@asd-lighting.com](mailto:orders@asd-lighting.com) | Web site: [www.asd-lighting.com](http://www.asd-lighting.com)







# LED AREA LIGHT WITH Q-BASE AND PHOTOCCELL

## PRO series

### ACCESSORIES:

Model	Description	UPC	Pcs. in middle box	Middle box size	Middle box weight	GTIN 14 in middle box	Pcs. per carton	Carton size	Carton weight	GTIN 14 in carton
ASD-09MW-WH	Microwave motion sensor 3pin white	810128113700	10	5.5" x 2.6" x 11.4"	1.2 lbs	20810128113704	120	17.3" x 11.8" x 11"	12.1 lbs	30810128113701
ASD-09MW-BK	Microwave motion sensor 3pin black	810128113717	10	5.5" x 2.6" x 11.4"	1.2 lbs	20810128113711	120	17.3" x 11.8" x 11"	12.1 lbs	30810128113718
ASD-09IR-WH	Infrared motion sensor 3pin 39ft white	810128113694	10	5.5" x 2.6" x 11.4"	1.2 lbs	20810128113698	120	17.3" x 11.8" x 11"	12.1 lbs	30810128113695
ASD-09IR-BK	Infrared motion sensor 3pin 39ft black	810128114349	10	5.5" x 2.6" x 11.4"	1.2 lbs	20810128114343	120	17.3" x 11.8" x 11"	12.1 lbs	30810128114340
ASD-09IR50-WH	Infrared motion sensor 3pin 50ft white	810128116794	10	5.5" x 2.6" x 11.4"	0.9 lbs	10810128116791	120	17.3" x 11.8" x 11"	10.7 lbs	20810128116798
ASD-06RC	Remote control for motion sensor	810128114370	10	6.3" x 2.9" x 11.4"	0.5 lbs	30810128114371	60	15.8" x 11.8" x 9.3"	24.7 lbs	40810128114378
ASD-09MW-NLS-WH	Microwave motion sensor smart 3pin white	810128113762	10	5.5" x 2.6" x 11.4"	1.2 lbs	20810128113766	120	17.3" x 11.8" x 11"	12.1 lbs	30810128113763
ASD-09IR-NLS-WH	Infrared motion sensor smart 3pin 39ft white	810128113755	10	5.5" x 2.6" x 11.4"	1.2 lbs	20810128113759	120	17.3" x 11.8" x 11"	12.1 lbs	30810128113756
ASD-06RC-NLS	Remote control for NLS devices	810128114387	10	6.3" x 2.9" x 11.4"	0.5 lbs	20810128114381	60	15.8" x 11.8" x 9.3"	24.7 lbs	30810128114388
ASD-AM-LSB5-WH	Arm mounting bracket white for 150-300W	810128118477	-	-	-	-	10	27" x 9.5" x 15.9"	15.4 lbs	10810128118474
ASD-AM-LSB5-SL	Arm mounting bracket silver for 150-300W	810128118460	-	-	-	-	10	27" x 9.5" x 15.9"	15.4 lbs	10810128118467
ASD-AM-LSB5-BR	Arm mounting bracket bronze for 150-300W	810128116206	-	-	-	-	10	27" x 9.5" x 15.9"	15.4 lbs	10810128116203
ASD-AM-LSB5-BK	Arm mounting bracket black for 150-300W	810128118453	-	-	-	-	10	27" x 9.5" x 15.9"	15.4 lbs	10810128118450
ASD-AMR-LSB5-WH	Adjustable arm mounting bracket white for 150-300W	810128113298	-	-	-	-	20	27.4" x 16.5" x 14"	52.9 lbs	10810128113295
ASD-AMR-LSB5-SL	Adjustable arm mounting bracket silver for 150-300W	810128112253	-	-	-	-	20	27.4" x 16.5" x 14"	52.9 lbs	20810128112257
ASD-AMR-LSB5-BR	Adjustable arm mounting bracket bronze for 150-300W	810128112246	-	-	-	-	20	27.4" x 16.5" x 14"	52.9 lbs	20810128112240
ASD-AMR-LSB5-BK	Adjustable arm mounting bracket black for 150-300W	810128112239	-	-	-	-	20	27.4" x 16.5" x 14"	52.9 lbs	20810128112233
ASD-AMR2-LSB-WH	Adjustable arm mounting bracket white for 500W	810128114011	-	-	-	-	10	21.4" x 9.6" x 13.4"	30.9 lbs	10810128114018
ASD-AMR2-LSB-SL	Adjustable arm mounting bracket silver for 500W	810128113335	-	-	-	-	10	21.4" x 9.6" x 13.4"	30.9 lbs	10810128113332
ASD-AMR2-LSB-BR	Adjustable arm mounting bracket bronze for 500W	810128113328	-	-	-	-	10	21.4" x 9.6" x 13.4"	30.9 lbs	10810128113325
ASD-AMR2-LSB-BK	Adjustable arm mounting bracket black for 500W	810128113311	-	-	-	-	10	21.4" x 9.6" x 13.4"	30.9 lbs	10810128113318
ASD-SF-LSB5-WH	Slip fitter mounting bracket white for 150-300W	810128113304	-	-	-	-	20	15.5" x 17.7" x 11.1"	35.3 lbs	10810128113301
ASD-SF-LSB5-SL	Slip fitter mounting bracket silver for 150-300W	810128111973	-	-	-	-	20	15.5" x 17.7" x 11.1"	35.3 lbs	10810128111970
ASD-SF-LSB5-BR	Slip fitter mounting bracket bronze for 150-300W	810128111041	-	-	-	-	20	15.5" x 17.7" x 11.1"	35.3 lbs	20810128111045
ASD-SF-LSB5-BK	Slip fitter mounting bracket black for 150-300W	810128111966	-	-	-	-	20	15.5" x 17.7" x 11.1"	35.3 lbs	10810128111963
ASD-SF2-LSB-WH	Slip fitter mounting bracket white for 500W	810128114257	-	-	-	-	10	18.4" x 9.3" x 11.8"	35.1 lbs	10810128114254
ASD-SF2-LSB-SL	Slip fitter mounting bracket silver for 500W	810128114240	-	-	-	-	10	18.4" x 9.3" x 11.8"	35.1 lbs	10810128114247
ASD-SF2-LSB-BR	Slip fitter mounting bracket bronze for 500W	810128114233	-	-	-	-	10	18.4" x 9.3" x 11.8"	35.1 lbs	10810128114230
ASD-SF2-LSB-BK	Slip fitter mounting bracket black for 500W	810128114226	-	-	-	-	10	18.4" x 9.3" x 11.8"	35.1 lbs	10810128114223
ASD-TN-BR	Tenon bracket bronze	810128116800	-	-	-	-	5	21.7" x 10.4" x 9.8"	26.2 lbs	10810128116807
ASD-B2BT	Dual bull tenon bracket bronze	810128117876	-	-	-	-	2	28.4" x 9.9" x 18.5"	28 lbs	10810128117873
ASD-B3BT	Triple bull tenon bracket bronze	810128117883	-	-	-	-	1	39.5" x 4.4" x 17.3"	19 lbs	-
ASD-TR-LSB5-WH	Full trunnion mounting bracket white for 150-300W	810128113434	-	-	-	-	20	14.8" x 10.3" x 12.4"	44.1 lbs	10810128113431
ASD-TR-LSB5-SL	Full trunnion mounting bracket silver for 150-300W	810128111997	-	-	-	-	20	14.8" x 10.3" x 12.4"	44.1 lbs	10810128111994
ASD-TR-LSB5-BR	Full trunnion mounting bracket bronze for 150-300W	810128111058	-	-	-	-	20	14.8" x 10.3" x 12.4"	44.1 lbs	10810128111055
ASD-TR-LSB5-BK	Full trunnion mounting bracket black for 150-300W	810128111980	-	-	-	-	20	14.8" x 10.3" x 12.4"	44.1 lbs	10810128111987
ASD-TR2-LSB-WH	Full trunnion mounting bracket white for 500W	810128114295	-	-	-	-	10	14.5" x 14" x 8.2"	31.7 lbs	10810128114292
ASD-TR2-LSB-SL	Full trunnion mounting bracket silver for 500W	810128114288	-	-	-	-	10	14.5" x 14" x 8.2"	31.7 lbs	10810128114285
ASD-TR2-LSB-BR	Full trunnion mounting bracket bronze for 500W	810128114271	-	-	-	-	10	14.5" x 14" x 8.2"	31.7 lbs	10810128114278
ASD-TR2-LSB-BK	Full trunnion mounting bracket black for 500W	810128114264	-	-	-	-	10	14.5" x 14" x 8.2"	31.7 lbs	10810128114261
ASD-FM1-LSB5-WH	Floodlight mounting bracket white for 150-200W	810128114073	-	-	-	-	10	13.2" x 15.9" x 12.8"	19.8 lbs	10810128114070
ASD-FM1-LSB5B-WH	Floodlight mounting bracket white for 150-200W	810128118392	-	-	-	-	10	24.8" x 13.8" x 12.4"	21.2 lbs	10810128118399
ASD-FM1-LSB5-SL	Floodlight mounting bracket silver for 150-200W	810128112024	-	-	-	-	10	13.2" x 15.9" x 12.8"	19.8 lbs	10810128112021
ASD-FM1-LSB5B-SL	Floodlight mounting bracket silver for 150-200W	810128116725	-	-	-	-	10	24.8" x 13.8" x 12.4"	21.2 lbs	10810128116722
ASD-FM1-LSB5-BR	Floodlight mounting bracket bronze for 150-200W	810128112017	-	-	-	-	10	13.2" x 15.9" x 12.8"	19.8 lbs	10810128112014
ASD-FM1-LSB5B-BR	Floodlight mounting bracket bronze for 150-200W	810128116718	-	-	-	-	10	24.8" x 13.8" x 12.4"	21.2 lbs	10810128116715
ASD-FM1-LSB5-BK	Floodlight mounting bracket black for 150-200W	810128112000	-	-	-	-	10	13.2" x 15.9" x 12.8"	19.8 lbs	10810128112007
ASD-FM1-LSB5B-BK	Floodlight mounting bracket black for 150-200W	810128118385	-	-	-	-	10	24.8" x 13.8" x 12.4"	21.2 lbs	10810128118382
ASD-FM2-LSB5-WH	Floodlight mounting bracket white for 240-300W	810128114080	-	-	-	-	10	14.8" x 13.8" x 18.9"	26.5 lbs	10810128114087
ASD-FM2-LSB5B-WH	Floodlight mounting bracket white for 240-300W	810128118415	-	-	-	-	10	22.6" x 14" x 14"	27.6 lbs	10810128118412
ASD-FM2-LSB5-SL	Floodlight mounting bracket silver for 240-300W	810128113144	-	-	-	-	10	14.8" x 13.8" x 18.9"	26.5 lbs	10810128113141
ASD-FM2-LSB5B-SL	Floodlight mounting bracket silver for 240-300W	810128116749	-	-	-	-	10	22.6" x 14" x 14"	27.6 lbs	10810128116746
ASD-FM2-LSB5-BR	Floodlight mounting bracket bronze for 240-300W	810128113137	-	-	-	-	10	14.8" x 13.8" x 18.9"	26.5 lbs	10810128113134
ASD-FM2-LSB5B-BR	Floodlight mounting bracket bronze for 240-300W	810128116732	-	-	-	-	10	22.6" x 14" x 14"	27.6 lbs	10810128116739
ASD-FM2-LSB5-BK	Floodlight mounting bracket black for 240-300W	810128113120	-	-	-	-	10	14.8" x 13.8" x 18.9"	26.5 lbs	10810128113127
ASD-FM2-LSB5B-BK	Floodlight mounting bracket black for 240-300W	810128118408	-	-	-	-	10	22.6" x 14" x 14"	27.6 lbs	10810128118405
ASD-FM3-LSB5-WH	Floodlight mounting bracket white for 500W	810128114097	-	-	-	-	5	16.3" x 19.5" x 13.4"	26.5 lbs	10810128114094
ASD-FM3-LSB5B-WH	Floodlight mounting bracket white for 500W	810128118446	-	-	-	-	5	15" x 13.8" x 13.8"	22.1 lbs	10810128118443
ASD-FM3-LSB5-SL	Floodlight mounting bracket silver for 500W	810128112055	-	-	-	-	5	16.3" x 19.5" x 13.4"	26.5 lbs	10810128112052
ASD-FM3-LSB5B-SL	Floodlight mounting bracket silver for 500W	810128118422	-	-	-	-	5	15" x 13.8" x 13.8"	22.1 lbs	10810128118429
ASD-FM3-LSB5-BR	Floodlight mounting bracket bronze for 500W	810128112048	-	-	-	-	5	16.3" x 19.5" x 13.4"	26.5 lbs	10810128112045
ASD-FM3-LSB5B-BR	Floodlight mounting bracket bronze for 500W	810128116756	-	-	-	-	5	15" x 13.8" x 13.8"	22.1 lbs	10810128116753
ASD-FM3-LSB5-BK	Floodlight mounting bracket black for 500W	810128112031	-	-	-	-	5	16.3" x 19.5" x 13.4"	26.5 lbs	10810128112038
ASD-FM3-LSB5B-BK	Floodlight mounting bracket black for 500W	810128118439	-	-	-	-	5	15" x 13.8" x 13.8"	22.1 lbs	10810128118436
ASD-WMB-LSB-BR	Wall mounting bracket bronze	810128118484	-	-	-	-	8	18.5" x 15.8" x 14"	9.3 lbs	10810128118481
ASD-POST-LSB5	Post bracket black	810128117661	-	-	-	-	4	20.7" x 20.7" x 6.1"	11.5 lbs	10810128117668

For most up-to-date spec sheets please refer to [asd-lighting.com](http://asd-lighting.com)



# LED AREA LIGHT WITH Q-BASE AND PHOTOCCELL

## PRO series

Model	Description	UPC	Pcs. in middle box	Middle box size	Middle box weight	GTIN 14 in middle box	Pcs. per carton	Carton size	Carton weight	GTIN 14 in carton
ASD-SPS-LSB5-BR	Spill shield bronze for 150-200W	810128117845	-	-	-	-	10	15.4" x 13" x 12.4"	13.2 lbs	10810128117842
ASD-SPS2-LSB5-BR	Spill shield bronze for 240-500W	810128117852	-	-	-	-	10	18.5" x 15.6" x 13"	17.6 lbs	10810128117859
ASD-L2A-LSB5	Clear lens type II-M for 150-200W	810128114103	-	-	-	-	50	18.5" x 11" x 9.1"	25.4 lbs	10810128114100
ASD-L2A-LSB5B	Clear lens type II-M for 150-200W	810128116138	-	-	-	-	30	10.8" x 8.5" x 12"	11.7 lbs	10810128116135
ASD-L4A-LSB5	Clear lens type IV-S for 150-200W	810128114127	-	-	-	-	50	18.5" x 11" x 9.1"	25.4 lbs	10810128114124
ASD-L4A-LSB5B	Clear lens type IV-S for 150-200W	810128116152	-	-	-	-	30	10.8" x 8.5" x 12"	11.7 lbs	10810128116159
ASD-L5A-LSB5	Clear lens type V-S for 150-200W	810128114141	-	-	-	-	50	18.5" x 11" x 9.1"	25.4 lbs	10810128114148
ASD-L5A-LSB5B	Clear lens type V-S for 150-200W	810128116176	-	-	-	-	30	10.8" x 8.5" x 12"	11.7 lbs	10810128116173
ASD-LFLA-LSB5B	60° Floodlight Clear lens for 150-200W	810128116190	-	-	-	-	30	10.8" x 8.5" x 12"	11.7 lbs	10810128116197
ASD-L2B-LSB5	Clear lens type II-M for 240-300W	810128114110	-	-	-	-	25	12.6" x 12.6" x 9.8"	19.1 lbs	10810128114117
ASD-L2B-LSB5B	Clear lens type II-M for 240-500W	810128116145	-	-	-	-	30	11.8" x 10.8" x 12.8"	12.4 lbs	10810128116142
ASD-L4B-LSB5	Clear lens type IV-S for 240-300W	810128114134	-	-	-	-	25	12.6" x 12.6" x 9.8"	19.1 lbs	10810128114131
ASD-L4B-LSB5B	Clear lens type IV-S for 240-500W	810128116169	-	-	-	-	30	11.8" x 10.8" x 12.8"	12.4 lbs	10810128116166
ASD-L5B-LSB5	Clear lens type V-S for 240-300W	810128114158	-	-	-	-	25	12.6" x 12.6" x 9.8"	19.1 lbs	10810128114155
ASD-L5B-LSB5B	Clear lens type V-S for 240-500W	810128116183	-	-	-	-	30	11.8" x 10.8" x 12.8"	12.4 lbs	10810128116180
ASD-LFLB-LSB5B	60° Floodlight Clear lens for 240-500W	810128116879	-	-	-	-	30	11.8" x 10.8" x 12.8"	12.4 lbs	10810128116876

## ANNEX 1

Model LSB5A	Watts	3,000 K	4,000 K	5,000 K
ASD-LSB5A-PRO-150WH	100W	17,162 lm	18,151 lm	17,621 lm
ASD-LSB5A-PRO-150SL	120W	19,830 lm	21,076 lm	20,596 lm
ASD-LSB5A-PRO-150BR	150W	24,391 lm	25,823 lm	24,194 lm
ASD-LSB5A-PRO-200WH	100W	18,185 lm	18,424 lm	18,280 lm
ASD-LSB5A-PRO-200SL	150W	54,861 lm	26,081 lm	25,791 lm
ASD-LSB5A-PRO-200BR	200W	32,066 lm	33,511 lm	33,400 lm
ASD-LSB5A-PRO-240WH	150W	25,914 lm	26,973 lm	26,348 lm
ASD-LSB5A-PRO-240SL	200W	33,065 lm	34,592 lm	33,863 lm
ASD-LSB5A-PRO-240BR	240W	38,259 lm	40,372 lm	39,470 lm
ASD-LSB5A-PRO-300WH	200W	35,403 lm	37,240 lm	36,992 lm
ASD-LSB5A-PRO-300SL	240W	40,979 lm	43,398 lm	42,728 lm
ASD-LSB5A-PRO-300BR	300W	48,920 lm	52,440 lm	51,504 lm
ASD-LSB5A-PRO-500WH	300W	51,972 lm	54,980 lm	57,693 lm
ASD-LSB5A-PRO-500SL	400W	65,730 lm	69,822 lm	69,515 lm
ASD-LSB5A-PRO-500BR	500W	79,941 lm	84,732 lm	83,958 lm
ASD-LSB5A-HV-PRO-150BR	100W	18,512 lm	19,160 lm	18,895 lm
	120W	20,072 lm	20,611 lm	20,206 lm
	150W	23,815 lm	25,191 lm	24,433 lm
ASD-LSB5A-HV-PRO-200BR	100W	17,586 lm	18,202 lm	18,139 lm
	150W	25,005 lm	26,156 lm	25,911 lm
	200W	32,569 lm	35,039 lm	34,227 lm
ASD-LSB5A-HV-PRO-240BR	150W	25,834 lm	26,753 lm	26,221 lm
	200W	32,931 lm	34,033 lm	33,791 lm
	240W	39,137 lm	41,388 lm	40,311 lm
ASD-LSB5A-HV-PRO-300BR	200W	33,622 lm	35,438 lm	35,161 lm
	240W	39,605 lm	41,980 lm	41,251 lm
	300W	48,734 lm	52,360 lm	51,346 lm
ASD-LSB5A-HV-PRO-500BR	300W	53,796 lm	56,803 lm	56,350 lm
	400W	66,874 lm	71,280 lm	70,658 lm
	500W	81,400 lm	86,582 lm	84,226 lm

Model LSB5B	Watts	3,000 K	4,000 K	5,000 K
ASD-LSB5B-PRO-150WH	100W	16,155 lm	17,542 lm	16,368 lm
ASD-LSB5B-PRO-150SL	120W	18,712 lm	21,140 lm	20,010 lm
ASD-LSB5B-PRO-150BR	150W	21,919 lm	24,968 lm	23,503 lm
ASD-LSB5BHV-PRO-150BR	100W	16,155 lm	17,031 lm	16,368 lm
ASD-LSB5B-PRO-200WH	150W	21,919 lm	24,968 lm	23,503 lm
ASD-LSB5B-PRO-200SL	200W	27,908 lm	33,103 lm	29,553 lm
ASD-LSB5B-PRO-200BR	150W	21,919 lm	24,968 lm	23,503 lm
ASD-LSB5B-PRO-200BK	200W	27,908 lm	33,103 lm	29,553 lm
ASD-LSB5BHV-PRO-200BR	150W	21,919 lm	24,968 lm	23,503 lm
ASD-LSB5B-PRO-240WH	200W	27,908 lm	33,103 lm	29,553 lm
ASD-LSB5B-PRO-240SL	240W	34,209 lm	39,568 lm	36,329 lm
ASD-LSB5B-PRO-240BK	200W	27,908 lm	33,103 lm	29,553 lm
ASD-LSB5BHV-PRO-240BR	240W	34,209 lm	39,568 lm	36,329 lm
ASD-LSB5B-PRO-300WH	200W	30,024 lm	34,184 lm	31,801 lm
ASD-LSB5B-PRO-300SL	240W	34,209 lm	39,568 lm	36,329 lm
ASD-LSB5B-PRO-300BK	300W	42,237 lm	49,380 lm	43,463 lm
ASD-LSB5BHV-PRO-300WH	300W	42,237 lm	49,380 lm	43,463 lm
ASD-LSB5BHV-PRO-300SL	300W	42,237 lm	49,380 lm	43,463 lm
ASD-LSB5BHV-PRO-300BR	300W	42,237 lm	49,380 lm	43,463 lm
ASD-LSB5B-PRO-500WH	300W	51,972 lm	54,980 lm	57,693 lm
ASD-LSB5B-PRO-500SL	400W	65,730 lm	69,822 lm	69,515 lm
ASD-LSB5B-PRO-500BR	500W	79,941 lm	84,732 lm	83,958 lm
ASD-LSB5B-PRO-500BK	500W	79,941 lm	84,732 lm	83,958 lm
ASD-LSB5BHV-PRO-500BR	500W	79,941 lm	84,732 lm	83,958 lm

Model LSB5R	Watts	3,000 K	4,000 K	5,000 K
ASD-LSB5R-PRO-100BK	35W	6,045 lm	6,469 lm	6,467 lm
ASD-LSB5R-PRO-100BK-POST	55W	8,818 lm	9,750 lm	9,450 lm
	75W	11,359 lm	12,995 lm	12,176 lm
	100W	14,474 lm	16,567 lm	15,223 lm

BUG rating	Model	3,000 K	4,000 K	5,000 K
B3-U3-G3	ASD-LSB5A-PRO-150WH	ASD-LSB5A-PRO-150SL	ASD-LSB5A-PRO-150BR	ASD-LSB5A-PRO-150BK
B4-U3-G4	ASD-LSB5A-PRO-200WH	ASD-LSB5A-PRO-200BR	ASD-LSB5A-PRO-240WH	ASD-LSB5A-PRO-240BR
	ASD-LSB5A-PRO-200SL	ASD-LSB5A-PRO-200BK	ASD-LSB5A-PRO-240SL	ASD-LSB5A-PRO-240BK
B5-U3-G4	ASD-LSB5A-PRO-300WH	ASD-LSB5A-PRO-300BR	ASD-LSB5A-PRO-300BK	ASD-LSB5A-PRO-300BK
B5-U3-G5	ASD-LSB5A-PRO-500WH	ASD-LSB5A-PRO-500SL	ASD-LSB5A-PRO-500BR	ASD-LSB5A-PRO-500BK
B5-U0-G5	ASD-LSB5A-PRO-500WH	ASD-LSB5A-PRO-500SL	ASD-LSB5A-PRO-500BR	ASD-LSB5A-PRO-500BK

For most up-to-date spec sheets please refer to [asd-lighting.com](http://asd-lighting.com)