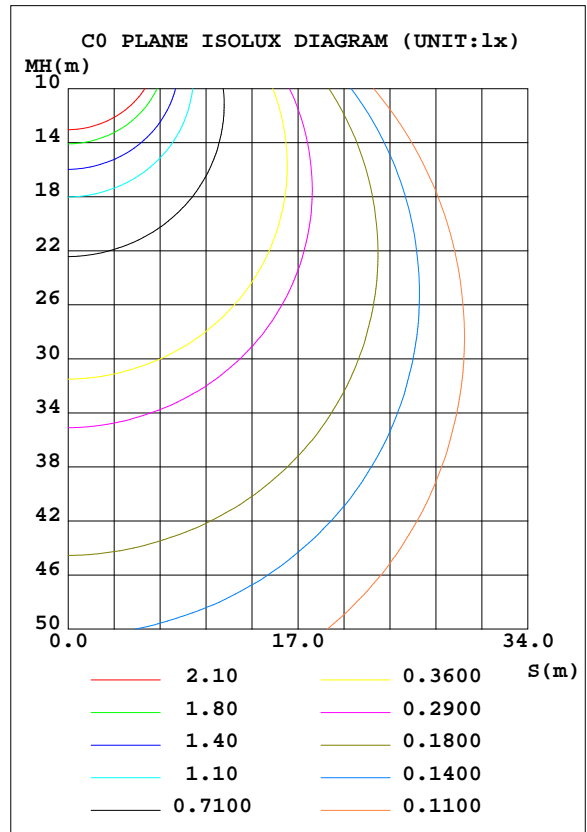
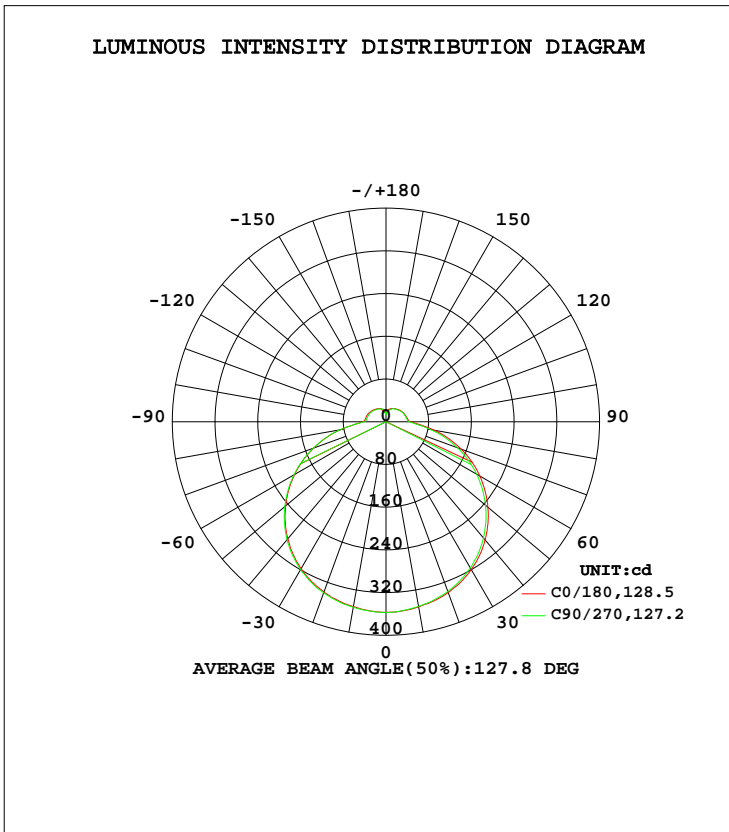


LUMINAIRE PHOTOMETRIC TEST REPORT

Test:U:119.9V I:0.2596A P:28.96W PF:0.9303 Lamp Flux:1457.38x1 lm		
NAME: LED luminaires	TYPE:N/A	WEIGHT:N/A
SPEC.:ASD-LFC-LF-16D28-AC-NKBK-2700K	DIM.: N/A	SERIAL No.:N/A
MFR.:ASD Lighting Corp	SUR.:N/A	Shielding Angle:N/A

DATA OF LAMP		PHOTOMETRIC DATA Eff: 50.32 lm/W			
MODEL	PSZ2S221111007-10	I <sub>max</sub> (cd)	357.6	S/MH(C0/180)	1.33
NOMINAL POWER(W)		LOR(%)	100.0	S/MH(C90/270)	1.32
RATED VOLTAGE(V)	120	TOTAL FLUX(lm)	1457.4	η UP, DN(C0-180)	7.3,42.9
NOMINAL FLUX(lm)	1457.38	CIE CLASS	SEMI-D.	η UP, DN(C180-360)	7.5,42.4
LAMPS INSIDE	1	η up(%)	14.7	CIBSE SHR NOM	1.50
TEST VOLTAGE(V)	120	η down(%)	85.3	CIBSE SHR MAX	1.55



C Range: 0 - 360DEG  
 C Interval: 22.5DEG  
 Test Speed: HIGH  
 Temperature:25.1DEG  
 Operators:Evan  
 Test Date:2022-11-21

γ Range: 0 - 180DEG  
 γ Interval: 1.0DEG  
 Test System:EVERFINE GO-R5000\_V2 SYSTEM V2.0.351  
 Humidity:44%  
 Test Distance:2.532m [K=1.0000]  
 Remarks:

ZONAL FLUX DIAGRAM

ZONAL FLUX DIAGRAM:

γ	C0	C45	C90	C135	C180	C225	C270	C315	γ	Φ zone	Φ total	%lum,lamp
10	351.5	352.5	352.7	352.4	352.1	352.0	351.1	350.5	0- 10	33.82	33.82	2.32,2.32
20	339.5	340.7	341.1	341.0	340.5	339.9	338.2	337.4	10- 20	98.05	131.9	9.05,9.05
30	317.7	319.1	319.9	320.4	319.6	318.5	315.9	315.2	20- 30	152.4	284.2	19.5,19.5
40	286.1	287.8	288.4	289.1	288.8	287.4	284.0	282.7	30- 40	190.2	474.4	32.6,32.6
50	245.4	247.3	247.4	249.0	249.1	247.5	243.3	241.4	40- 50	206.5	680.9	46.7,46.7
60	197.8	199.4	199.0	202.1	202.8	200.8	196.0	193.4	50- 60	199.7	880.6	60.4,60.4
70	144.1	145.7	144.9	148.7	150.1	148.0	142.3	138.8	60- 70	171.1	1052	72.2,72.2
80	86.73	87.58	87.61	91.14	92.07	90.21	85.20	82.45	70- 80	123.4	1175	80.6,80.6
90	43.45	42.73	41.33	44.09	46.38	46.21	43.78	42.32	80- 90	67.79	1243	85.3,85.3
100	38.85	37.93	36.62	38.21	40.46	40.70	39.16	38.46	90-100	43.93	1287	88.3,88.3
110	37.36	36.36	35.32	36.44	38.24	38.57	37.40	37.11	100-110	40.15	1327	91.1,91.1
120	35.33	34.44	33.94	34.72	36.06	36.32	35.49	35.30	110-120	35.91	1363	93.5,93.5
130	33.25	32.18	31.81	32.60	33.70	33.86	32.87	32.70	120-130	30.60	1393	95.6,95.6
140	30.72	29.71	29.63	30.15	31.06	31.01	30.32	30.32	130-140	24.52	1418	97.3,97.3
150	28.56	27.50	27.88	28.55	28.62	28.82	28.46	27.78	140-150	18.43	1436	98.6,98.6
160	26.33	25.57	25.98	23.71	26.15	26.41	24.03	24.79	150-160	12.52	1449	99.4,99.4
170	20.64	20.98	20.85	19.93	21.89	20.94	19.49	20.15	160-170	6.714	1456	99.9,99.9
180	18.74	21.73	18.50	19.12	18.60	19.00	18.25	18.08	170-180	1.703	1457	100,100
DEG	LUMINOUS INTENSITY:cd									UNIT:lm		

Conical surface Flux(90deg): 577.05 lm

%lum = 39.6%  
%lamp = 39.6%

Conical surface Flux(120deg): 880.63 lm

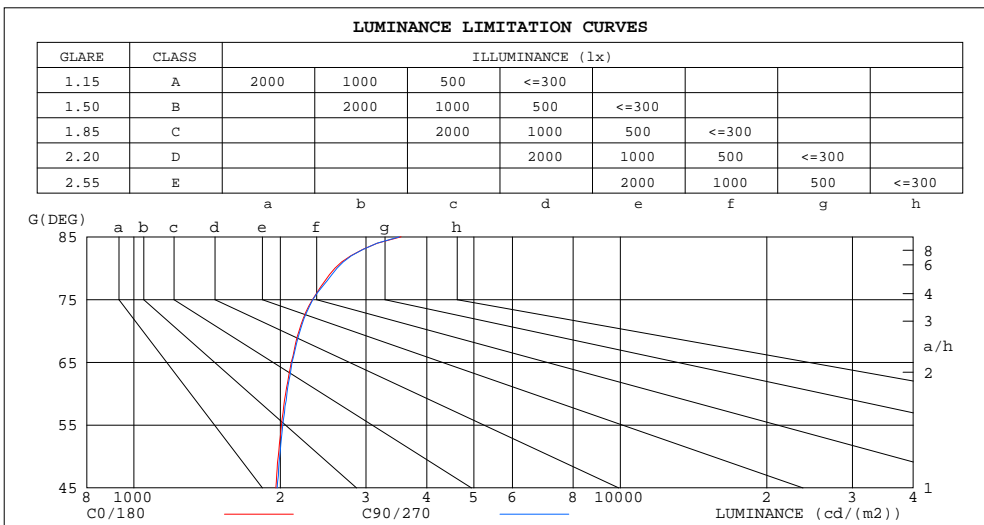
%lum = 60.4%  
%lamp = 60.4%

C Range: 0 - 360DEG  
C Interval: 22.5DEG  
Test Speed: HIGH  
Temperature:25.1DEG  
Operators:Evan  
Test Date:2022-11-21

γ Range: 0 - 180DEG  
γ Interval: 1.0DEG  
Test System:EVERFINE GO-R5000\_V2 SYSTEM V2.0.351  
Humidity:44%  
Test Distance:2.532m [K=1.0000]  
Remarks:

LUMINANCE LIMITATION CURVES

Test:U:119.9V I:0.2596A P:28.96W PF:0.9303 Lamp Flux:1457.38x1 lm		
NAME: LED luminaires	TYPE:N/A	WEIGHT:N/A
SPEC.:ASD-LFC-LF-16D28-AC-NKBK-2700K	DIM.: N/A	SERIAL No.:N/A
MFR.:ASD Lighting Corp	SUR.:N/A	Shielding Angle:N/A



LUMINANCE cd/(m2)		
G(DEG)	C0/180	C90/270
85	3541	3513
80	2591	2615
75	2329	2333
70	2186	2195
65	2106	2115
60	2052	2063
55	2011	2024
50	1980	1995
45	1958	1971

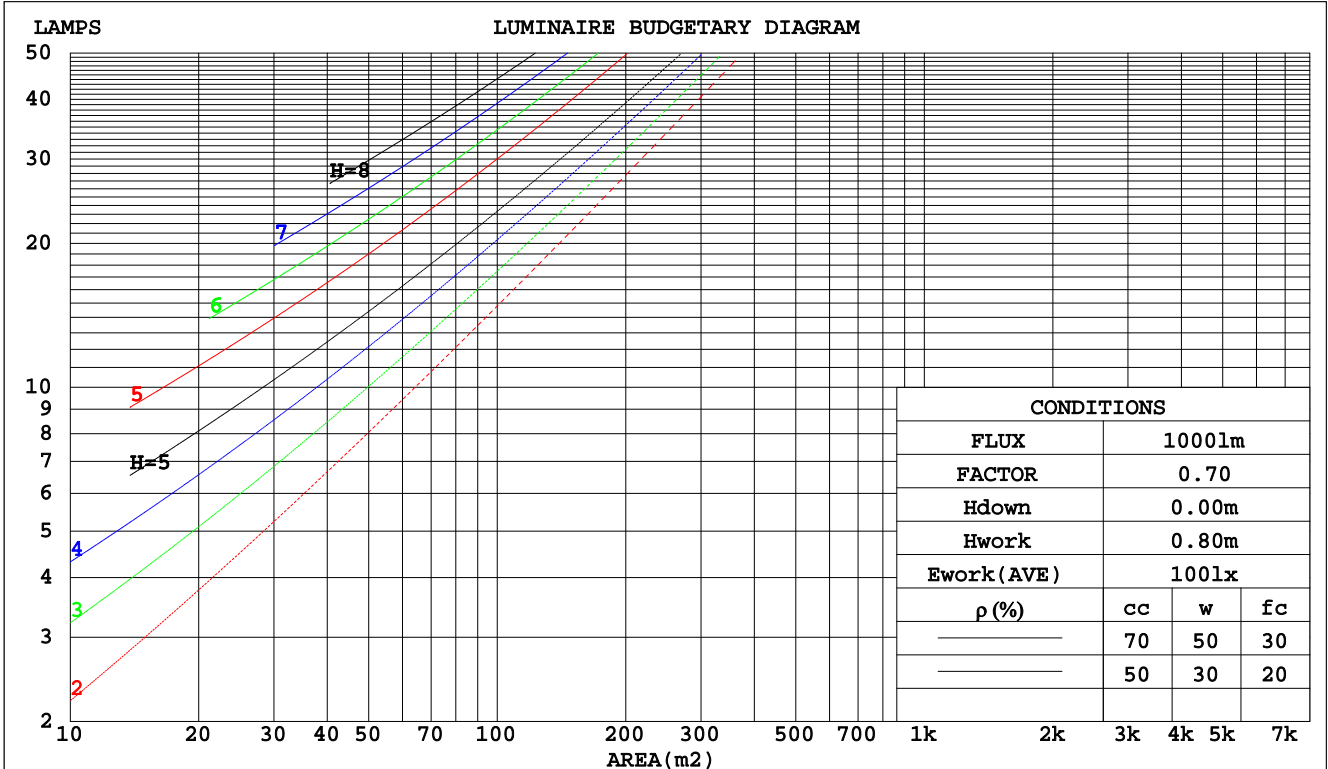
C Range: 0 - 360DEG  
 C Interval: 22.5DEG  
 Test Speed: HIGH  
 Temperature:25.1DEG  
 Operators:Evan  
 Test Date:2022-11-21

γ Range: 0 - 180DEG  
 γ Interval: 1.0DEG  
 Test System:EVERFINE GO-R5000\_V2 SYSTEM V2.0.351  
 Humidity:44%  
 Test Distance:2.532m [K=1.0000]  
 Remarks:

CU AND LUMINAIRE BUDGETARY ESTIMATE DIAGRAM

Test:U:119.9V I:0.2596A P:28.96W PF:0.9303 Lamp Flux:1457.38x1 lm		
NAME: LED luminaires	TYPE:N/A	WEIGHT:N/A
SPEC.:ASD-LFC-LF-16D28-AC-NKBK-2700K	DIM.: N/A	SERIAL No.:N/A
MFR.:ASD Lighting Corp	SUR.:N/A	Shielding Angle:N/A

pcc	80%			70%			50%			30%			10%			0
	50%	30%	10%	50%	30%	10%	50%	30%	10%	50%	30%	10%	50%	30%	10%	0
pw																0
pfc	20%			20%			20%			20%			20%			0
RCR	RCR:Room Cavity Ratio      Coefficients of Utilization(CU)															
0.0	1.16	1.16	1.16	1.11	1.11	1.11	1.03	1.03	1.03	.95	.95	.95	.89	.89	.89	.85
1.0	.98	.93	.89	.94	.90	.86	.87	.84	.81	.81	.78	.76	.75	.73	.71	.68
2.0	.84	.77	.71	.81	.75	.69	.75	.70	.65	.70	.65	.61	.65	.61	.58	.55
3.0	.73	.65	.58	.71	.63	.56	.66	.59	.54	.61	.55	.51	.56	.52	.48	.45
4.0	.65	.55	.48	.62	.54	.47	.58	.51	.45	.54	.48	.43	.50	.45	.41	.38
5.0	.57	.48	.41	.55	.47	.40	.52	.44	.39	.48	.42	.37	.45	.39	.35	.32
6.0	.51	.42	.36	.50	.41	.35	.46	.39	.33	.43	.37	.32	.40	.35	.31	.28
7.0	.46	.37	.31	.45	.37	.31	.42	.35	.29	.39	.33	.28	.37	.31	.27	.25
8.0	.42	.34	.28	.41	.33	.27	.38	.31	.26	.36	.30	.25	.34	.28	.24	.22
9.0	.39	.30	.25	.37	.30	.24	.35	.28	.23	.33	.27	.22	.31	.26	.22	.20
10.0	.35	.27	.22	.34	.27	.22	.32	.26	.21	.31	.25	.20	.29	.23	.19	.18



C Range: 0 - 360DEG  
 C Interval: 22.5DEG  
 Test Speed: HIGH  
 Temperature:25.1DEG  
 Operators:Evan  
 Test Date:2022-11-21

γ Range: 0 - 180DEG  
 γ Interval: 1.0DEG  
 Test System:EVERFINE GO-R5000\_V2 SYSTEM V2.0.351  
 Humidity:44%  
 Test Distance:2.532m [K=1.0000]  
 Remarks:

WEC AND CCEC

Test:U:119.9V I:0.2596A P:28.96W PF:0.9303 Lamp Flux:1457.38x1 lm		
NAME: LED luminaires	TYPE:N/A	WEIGHT:N/A
SPEC.:ASD-LFC-LF-16D28-AC-NKBK-2700K	DIM.: N/A	SERIAL No.:N/A
MFR.: ASD Lighting Corp	SUR.:N/A	Shielding Angle:N/A

ρcc	80%			70%			50%			30%			10%			0
ρw	50%	30%	10%	50%	30%	10%	50%	30%	10%	50%	30%	10%	50%	30%	10%	0
ρfc	20%			20%			20%			20%			20%			0
RCR	RCR:Room Cavity Ratio						Wall Exitance Coefficients(WEC)									
0.0																
1.0	.351	.200	.063	.339	.194	.061	.317	.182	.058	.297	.172	.055	.279	.162	.052	
2.0	.315	.173	.053	.304	.168	.052	.285	.158	.049	.267	.150	.047	.250	.141	.045	
3.0	.285	.151	.045	.275	.147	.044	.258	.140	.042	.241	.132	.041	.226	.125	.039	
4.0	.259	.135	.040	.250	.131	.039	.234	.124	.037	.219	.118	.036	.206	.112	.034	
5.0	.237	.121	.035	.229	.118	.034	.215	.112	.033	.201	.106	.032	.189	.101	.030	
6.0	.218	.109	.031	.211	.107	.031	.198	.101	.030	.186	.096	.028	.174	.092	.027	
7.0	.202	.100	.028	.196	.097	.028	.184	.093	.027	.172	.088	.026	.162	.084	.025	
8.0	.188	.092	.026	.182	.090	.025	.171	.085	.024	.161	.081	.023	.151	.077	.023	
9.0	.175	.085	.024	.170	.083	.023	.160	.079	.022	.150	.075	.022	.141	.072	.021	
10.0	.164	.079	.022	.160	.077	.021	.150	.074	.021	.141	.070	.020	.133	.067	.019	

ρcc	80%			70%			50%			30%			10%			0
ρw	50%	30%	10%	50%	30%	10%	50%	30%	10%	50%	30%	10%	50%	30%	10%	0
ρfc	20%			20%			20%			20%			20%			0
RCR	RCR:Room Cavity Ratio						Ceiling Cavity Exitance Coefficients(CCEC)									
0.0	.303	.303	.303	.259	.259	.259	.177	.177	.177	.101	.101	.101	.032	.032	.032	
1.0	.296	.269	.244	.253	.231	.210	.173	.159	.145	.100	.092	.085	.032	.030	.027	
2.0	.289	.246	.209	.248	.211	.181	.170	.146	.126	.098	.085	.074	.031	.028	.024	
3.0	.282	.229	.187	.242	.197	.162	.166	.137	.114	.096	.080	.067	.031	.026	.022	
4.0	.274	.216	.172	.235	.187	.149	.162	.130	.105	.094	.076	.062	.030	.025	.020	
5.0	.267	.206	.162	.229	.178	.141	.158	.125	.099	.091	.073	.059	.029	.024	.019	
6.0	.259	.198	.154	.223	.172	.134	.154	.120	.095	.089	.071	.056	.029	.023	.019	
7.0	.253	.192	.149	.217	.166	.130	.150	.116	.092	.087	.069	.055	.028	.022	.018	
8.0	.246	.186	.145	.212	.161	.126	.147	.113	.089	.085	.067	.053	.028	.022	.018	
9.0	.240	.181	.141	.207	.157	.123	.143	.110	.088	.083	.065	.052	.027	.021	.017	
10.0	.234	.177	.139	.202	.154	.121	.140	.108	.086	.082	.064	.051	.026	.021	.017	

C Range: 0 - 360DEG  
 C Interval: 22.5DEG  
 Test Speed: HIGH  
 Temperature:25.1DEG  
 Operators:Evan  
 Test Date:2022-11-21

γ Range: 0 - 180DEG  
 γ Interval: 1.0DEG  
 Test System:EVERFINE GO-R5000\_V2 SYSTEM V2.0.351  
 Humidity:44%  
 Test Distance:2.532m [K=1.0000]  
 Remarks:

UGR(Unified Glare Rating) Table

Test:U:119.9V I:0.2596A P:28.96W PF:0.9303 Lamp Flux:1457.38x1 lm										
NAME: LED luminaires					TYPE:N/A			WEIGHT:N/A		
SPEC.:ASD-LFC-LF-16D28-AC-NKBK-2700K					DIM.: N/A			SERIAL No.:N/A		
MFR.:ASD Lighting Corp					SUR.:N/A			Shielding Angle:N/A		
ceiling/cavity	0.7	0.7	0.5	0.5	0.3	0.7	0.7	0.5	0.5	0.3
walls	0.5	0.3	0.5	0.3	0.3	0.5	0.3	0.5	0.3	0.3
working plane	0.2	0.2	0.2	0.2	0.2	0.2	0.2	0.2	0.2	0.2
Room dimensions	Viewed crosswise					Viewed endwise				
x = 2H y = 2H	14.5	15.9	15.0	16.4	16.9	14.6	15.9	15.0	16.4	16.9
3H	16.5	17.8	17.0	18.3	18.8	16.5	17.8	17.0	18.3	18.8
4H	17.4	18.6	17.9	19.1	19.7	17.4	18.6	17.9	19.1	19.7
6H	18.3	19.4	18.8	20.0	20.5	18.3	19.5	18.8	20.0	20.6
8H	18.7	19.8	19.2	20.3	20.9	18.7	19.8	19.3	20.3	20.9
12H	19.1	20.2	19.7	20.7	21.3	19.1	20.2	19.7	20.7	21.3
4H 2H	15.2	16.4	15.8	16.9	17.5	15.2	16.5	15.8	17.0	17.5
3H	17.4	18.4	17.9	19.0	19.6	17.4	18.4	17.9	19.0	19.6
4H	18.5	19.4	19.1	20.0	20.6	18.5	19.4	19.0	20.0	20.6
6H	19.5	20.4	20.1	21.0	21.6	19.5	20.4	20.1	21.0	21.6
8H	20.0	20.8	20.6	21.4	22.1	20.0	20.8	20.6	21.4	22.1
12H	20.5	21.2	21.1	21.8	22.5	20.5	21.2	21.1	21.8	22.5
8H 4H	18.9	19.7	19.5	20.3	21.0	18.9	19.7	19.5	20.3	21.0
6H	20.1	20.8	20.8	21.4	22.2	20.1	20.8	20.8	21.4	22.2
8H	20.8	21.3	21.4	22.0	22.8	20.7	21.3	21.4	22.0	22.8
12H	21.4	21.9	22.1	22.6	23.4	21.4	21.9	22.1	22.6	23.4
12H 4H	18.9	19.7	19.6	20.3	21.0	18.9	19.7	19.6	20.3	21.0
6H	20.3	20.9	20.9	21.5	22.3	20.3	20.9	20.9	21.5	22.3
8H	21.0	21.5	21.7	22.2	22.9	21.0	21.5	21.6	22.2	22.9
Variations with the observer position at spacings:										
S = 1.0H	+ 0.1 / - 0.1					+ 0.1 / - 0.1				
1.5H	+ 0.2 / - 0.3					+ 0.2 / - 0.3				
2.0H	+ 0.2 / - 0.4					+ 0.2 / - 0.3				

CIE Pub.117 Corrected 1457 lm Total Lamp Luminous Flux.(8log(F/F0) = 1.3)

C Range: 0 - 360DEG  
 C Interval: 22.5DEG  
 Test Speed: HIGH  
 Temperature:25.1DEG  
 Operators:Evan  
 Test Date:2022-11-21

γ Range: 0 - 180DEG  
 γ Interval: 1.0DEG  
 Test System:EVERFINE GO-R5000\_V2 SYSTEM V2.0.351  
 Humidity:44%  
 Test Distance:2.532m [K=1.0000]  
 Remarks:

UTILIZATION FACTORS TABLE

Test:U:119.9V I:0.2596A P:28.96W PF:0.9303 Lamp Flux:1457.38x1 lm		
NAME: LED luminaires	TYPE:N/A	WEIGHT:N/A
SPEC.:ASD-LFC-LF-16D28-AC-NKBK-2700K	DIM.: N/A	SERIAL No.:N/A
MFR.:ASD Lighting Corp	SUR.:N/A	Shielding Angle:N/A

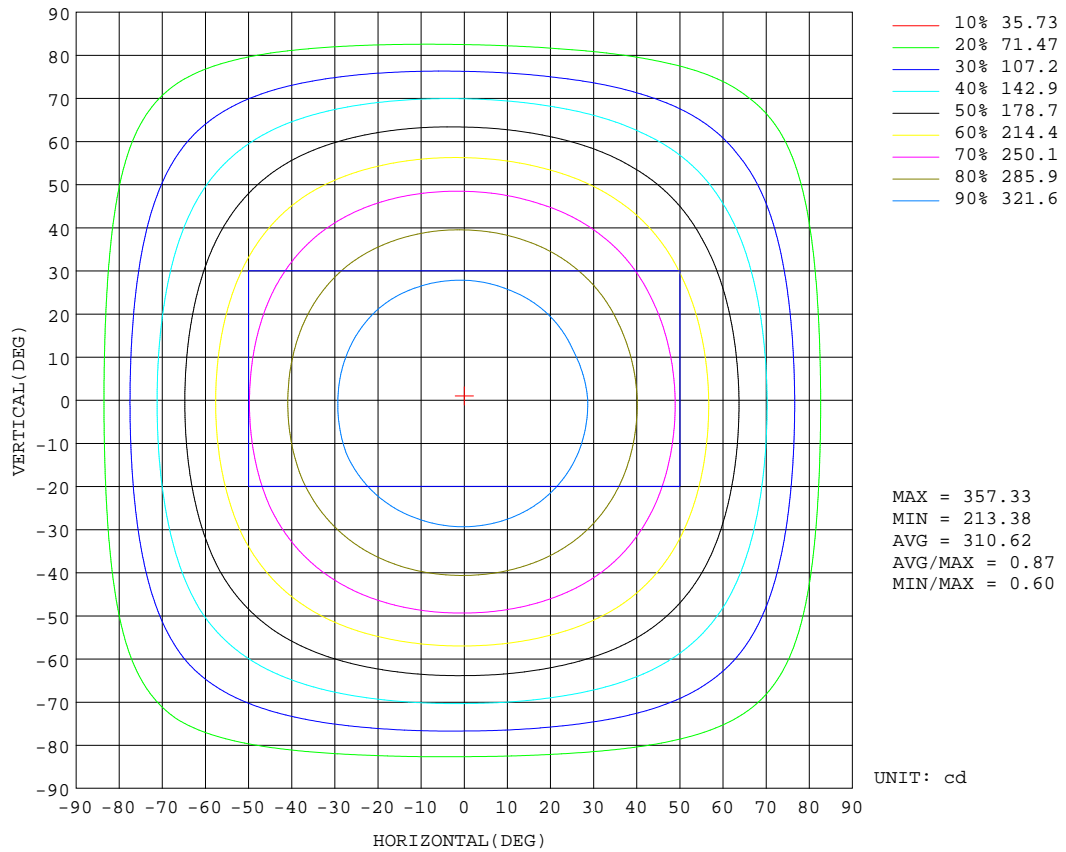
REFLECTANCE										
Ceiling	0.8	0.8	0.8	0.7	0.7	0.7	0.5	0.5	0.5	0
Walls	0.7	0.5	0.3	0.7	0.5	0.3	0.7	0.5	0.3	0
Working plane	0.2	0.2	0.2	0.2	0.2	0.2	0.2	0.2	0.2	0
ROOM INDEX	UTILIZATION FACTORS(PERCENT) $k(RI) \times RCR = 5$									
k = 0.60	50	38	31	49	38	31	47	37	30	23
0.80	60	47	39	58	46	39	55	45	38	30
1.00	68	55	47	66	54	47	62	55	46	37
1.25	75	63	55	73	62	54	68	59	52	43
1.50	80	69	61	77	67	60	73	64	57	47
2.00	87	77	69	84	75	68	79	71	65	54
2.50	92	82	75	88	80	73	82	76	70	58
3.00	95	87	80	92	84	78	85	79	74	62
4.00	100	93	87	96	90	84	89	84	80	66
5.00	102	96	91	99	93	89	92	87	84	69
ROOM INDEX	UF(total)									Direct
According to DIN EN 13032-2 2004			Suspended				SHRNOM = 1.25			

C Range: 0 - 360DEG  
 C Interval: 22.5DEG  
 Test Speed: HIGH  
 Temperature:25.1DEG  
 Operators:Evan  
 Test Date:2022-11-21

$\gamma$  Range: 0 - 180DEG  
 $\gamma$  Interval: 1.0DEG  
 Test System:EVERFINE GO-R5000\_V2 SYSTEM V2.0.351  
 Humidity:44%  
 Test Distance:2.532m [K=1.0000]  
 Remarks:

**ISOCANDELA DIAGRAM**

Test:U:119.9V I:0.2596A P:28.96W PF:0.9303 Lamp Flux:1457.38x1 lm		
NAME: LED luminaires	TYPE:N/A	WEIGHT:N/A
SPEC.:ASD-LFC-LF-16D28-AC-NKBK-2700K	DIM.: N/A	SERIAL No.:N/A
MFR.: ASD Lighting Corp	SUR.:N/A	Shielding Angle:N/A



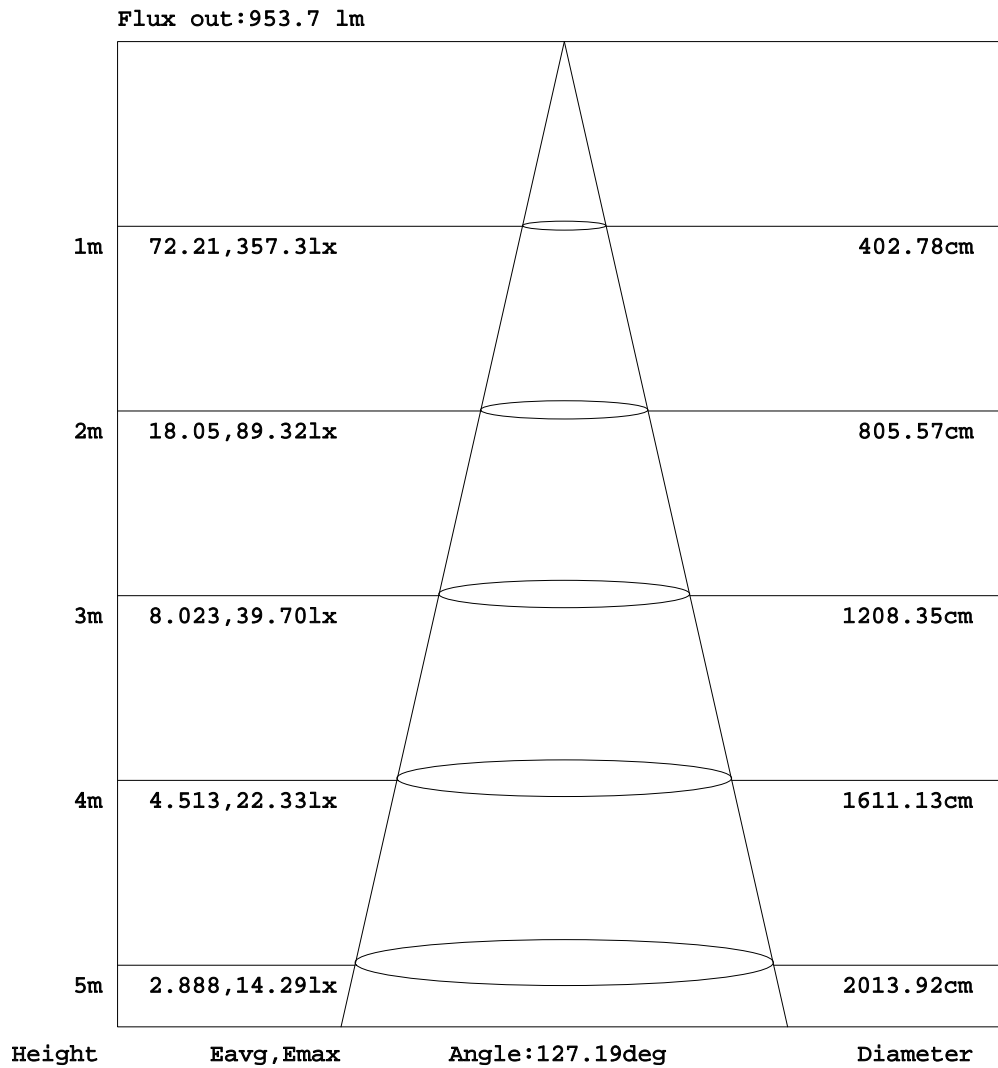
C Range: 0 - 360DEG  
 C Interval: 22.5DEG  
 Test Speed: HIGH  
 Temperature:25.1DEG  
 Operators:Evan  
 Test Date:2022-11-21

γ Range: 0 - 180DEG  
 γ Interval: 1.0DEG  
 Test System:EVERFINE GO-R5000\_V2 SYSTEM V2.0.351  
 Humidity:44%  
 Test Distance:2.532m [K=1.0000]  
 Remarks:



AAI Figure

Test:U:119.9V I:0.2596A P:28.96W PF:0.9303 Lamp Flux:1457.38x1 lm		
NAME: LED luminaires	TYPE:N/A	WEIGHT:N/A
SPEC.:ASD-LFC-LF-16D28-AC-NKBK-2700K	DIM.: N/A	SERIAL No.:N/A
MFR.: ASD Lighting Corp	SUR.:N/A	Shielding Angle:N/A



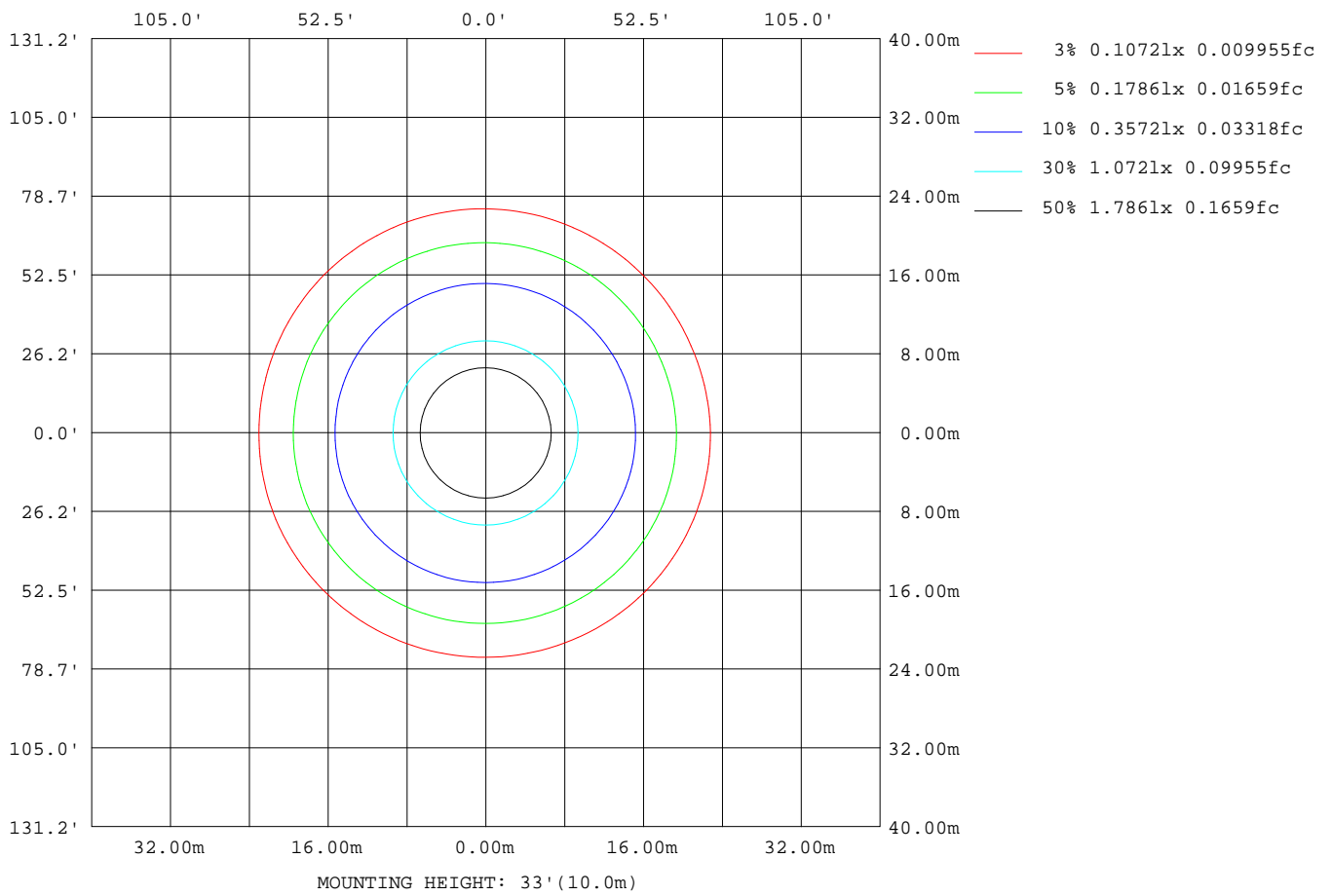
Note:The Curves indicate the illuminated area and the average illumination when the luminaire is at different distance.

C Range: 0 - 360DEG  
 C Interval: 22.5DEG  
 Test Speed: HIGH  
 Temperature:25.1DEG  
 Operators:Evan  
 Test Date:2022-11-21

γ Range: 0 - 180DEG  
 γ Interval: 1.0DEG  
 Test System:EVERFINE GO-R5000\_V2 SYSTEM V2.0.351  
 Humidity:44%  
 Test Distance:2.532m [K=1.0000]  
 Remarks:

ISOLUX DIAGRAM

Test:U:119.9V I:0.2596A P:28.96W PF:0.9303 Lamp Flux:1457.38x1 lm		
NAME: LED luminaires	TYPE:N/A	WEIGHT:N/A
SPEC.:ASD-LFC-LF-16D28-AC-NKBK-2700K	DIM.: N/A	SERIAL No.:N/A
MFR.:ASD Lighting Corp	SUR.:N/A	Shielding Angle:N/A



C Range: 0 - 360DEG  
 C Interval: 22.5DEG  
 Test Speed: HIGH  
 Temperature:25.1DEG  
 Operators:Evan  
 Test Date:2022-11-21

γ Range: 0 - 180DEG  
 γ Interval: 1.0DEG  
 Test System:EVERFINE GO-R5000\_V2 SYSTEM V2.0.351  
 Humidity:44%  
 Test Distance:2.532m [K=1.0000]  
 Remarks:

**LED Avg.L Report**

Test:U:119.9V I:0.2596A P:28.96W PF:0.9303 Lamp Flux:1457.38x1 lm		
NAME: LED luminaires	TYPE:N/A	WEIGHT:N/A
SPEC.:ASD-LFC-LF-16D28-AC-NKBK-2700K	DIM.: N/A	SERIAL No.:N/A
MFR.: ASD Lighting Corp	SUR.:N/A	Shielding Angle:N/A

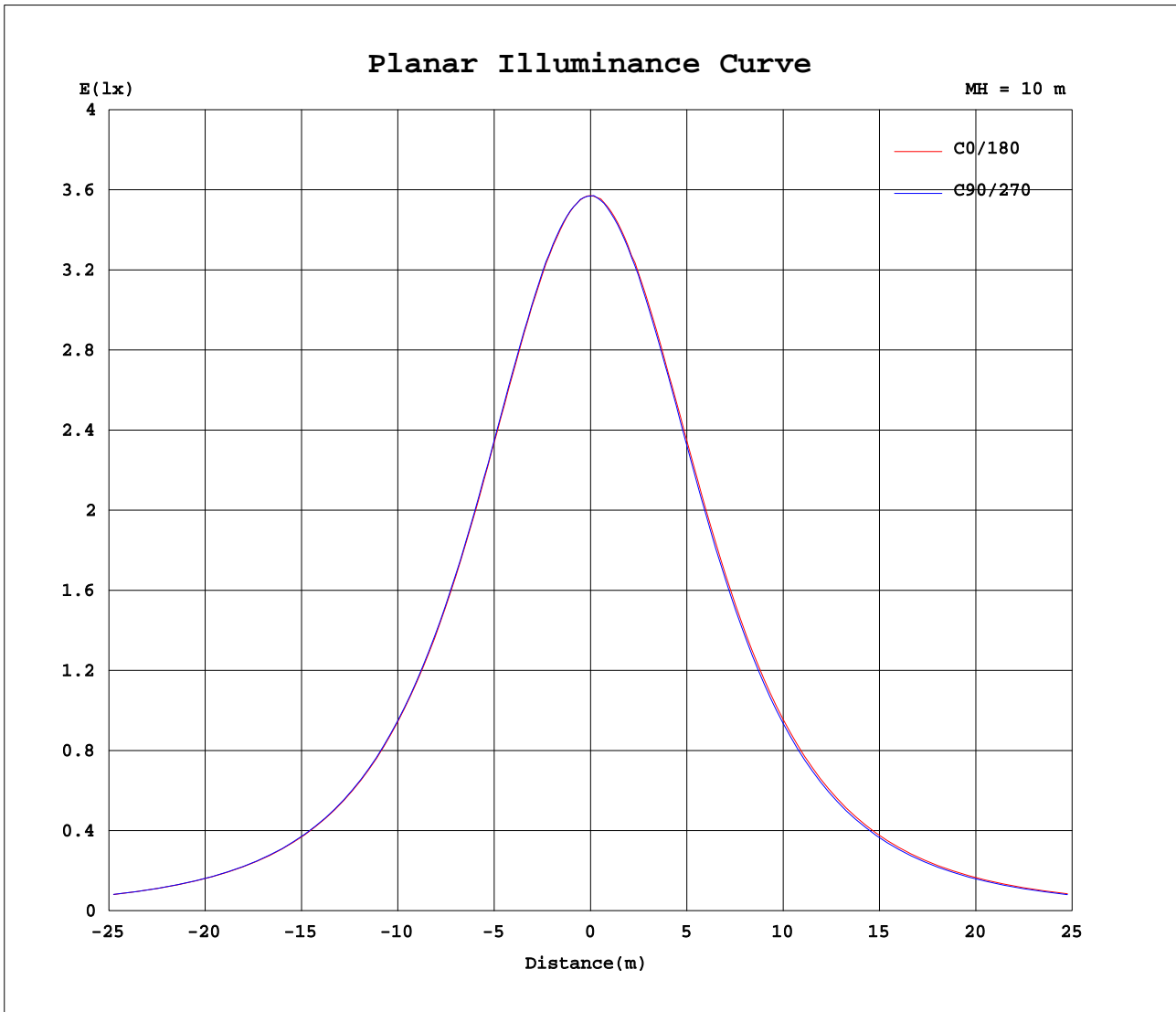
AvgL	cd/m2
L_0~180(65)av	2141
L_0~180(75)av	2378
L_0~180(85)av	3664
L_90~270(65)av	2101
L_90~270(75)av	2310
L_90~270(85)av	3501
L_45(65)av	2122
L_45(75)av	2346
L_45(85)av	3587

Standard: GB/T 29293-2012

C Range: 0 - 360DEG  
 C Interval: 22.5DEG  
 Test Speed: HIGH  
 Temperature:25.1DEG  
 Operators:Evan  
 Test Date:2022-11-21

γ Range: 0 - 180DEG  
 γ Interval: 1.0DEG  
 Test System:EVERFINE GO-R5000\_V2 SYSTEM V2.0.351  
 Humidity:44%  
 Test Distance:2.532m [K=1.0000]  
 Remarks:

Planar Illuminance Curve



C Range: 0 - 360DEG  
 C Interval: 22.5DEG  
 Test Speed: HIGH  
 Temperature: 25.1DEG  
 Operators: Evan  
 Test Date: 2022-11-21

$\gamma$  Range: 0 - 180DEG  
 $\gamma$  Interval: 1.0DEG  
 Test System: EVERFINE GO-R5000\_V2 SYSTEM V2.0.351  
 Humidity: 44%  
 Test Distance: 2.532m [K=1.0000]  
 Remarks:

LUMINOUS DISTRIBUTION INTENSITY DATA

Test:U:119.9V I:0.2596A P:28.96W PF:0.9303 Lamp Flux:1457.38x1 lm		
NAME: LED luminaires	TYPE:N/A	WEIGHT:N/A
SPEC.:ASD-LFC-LF-16D28-AC-NKBK-2700K	DIM.: N/A	SERIAL No.:N/A
MFR.: ASD Lighting Corp	SUR.:N/A	Shielding Angle:N/A

Table--1

UNIT: cd

C( DEG) γ (DEG)	0	22.5	45	67.5	90	112.5	135	157.5	180	202.5	225	247.5	270	292.5	315	337.5			
0	357	357	357	357	357	357	357	357	357	357	357	357	357	357	357	357			
5	355	355	356	356	356	357	356	356	356	355	355	355	355	355	354	355			
10	352	352	352	353	353	353	352	353	352	352	352	351	351	351	351	351			
15	347	347	348	348	348	348	348	348	347	347	347	346	346	346	345	346			
20	339	340	341	341	341	341	341	341	340	340	340	339	338	338	337	338			
25	330	330	331	331	332	332	332	332	331	331	330	329	328	328	328	328			
30	318	319	319	319	320	320	320	321	320	319	319	317	316	315	315	316			
35	303	304	305	305	305	306	306	307	305	305	304	302	301	301	300	301			
40	286	287	288	288	288	289	289	290	289	288	287	285	284	283	283	283			
45	267	268	268	269	269	270	270	271	270	270	268	266	265	264	263	264			
50	245	247	247	247	247	248	249	250	249	249	247	245	243	242	241	242			
55	222	224	224	224	224	225	226	228	227	226	225	223	220	219	218	219			
60	198	199	199	199	199	200	202	204	203	202	201	198	196	194	193	194			
65	172	173	173	173	172	174	176	178	177	177	175	173	170	168	167	168			
70	144	146	146	145	145	147	149	151	150	149	148	145	142	140	139	140			
75	116	117	118	117	117	118	121	123	121	120	119	117	114	112	111	112			
80	86.7	87.6	87.6	87.4	87.6	89.3	91.1	93.3	92.1	91.6	90.2	87.7	85.2	83.4	82.4	83.1			
85	59.5	60.0	59.9	59.2	59.1	60.5	62.5	64.6	63.7	63.4	62.3	60.7	58.6	57.1	56.6	56.7			
90	43.5	43.5	42.7	41.7	41.3	42.3	44.1	46.0	46.4	46.7	46.2	45.1	43.8	42.8	42.3	42.4			
95	39.8	39.6	38.9	37.9	37.5	38.1	39.5	41.0	41.9	42.2	42.0	41.3	40.3	39.6	39.3	39.4			
100	38.9	38.8	37.9	37.0	36.6	37.1	38.2	39.5	40.5	40.7	40.7	40.1	39.2	38.6	38.5	38.6			
105	38.2	38.0	37.2	36.3	36.0	36.4	37.3	38.5	39.3	39.6	39.6	38.9	38.4	37.8	37.8	38.0			
110	37.4	37.0	36.4	35.6	35.3	35.6	36.4	37.6	38.2	38.7	38.6	38.0	37.4	37.0	37.1	37.2			
115	36.4	36.1	35.4	34.8	34.7	34.9	35.6	36.7	37.2	37.5	37.3	36.9	36.5	35.9	36.3	36.3			
120	35.3	35.3	34.4	34.0	33.9	34.1	34.7	35.7	36.1	36.3	36.3	35.9	35.5	34.9	35.3	35.4			
125	34.3	34.2	33.4	33.0	33.1	33.1	33.7	34.7	34.9	35.0	35.2	34.9	34.3	33.7	34.2	34.4			
130	33.3	33.0	32.2	31.9	31.8	31.9	32.6	33.5	33.7	33.8	33.9	33.5	32.9	32.3	32.7	33.1			
135	32.1	31.8	31.0	30.6	30.8	30.8	31.4	32.2	32.4	32.5	32.4	32.2	31.6	30.7	31.7	31.9			
140	30.7	30.6	29.7	29.4	29.6	29.9	30.2	30.9	31.1	31.2	31.0	30.8	30.3	29.4	30.3	30.8			
145	29.6	29.5	28.6	28.4	28.7	29.1	29.4	29.8	29.9	30.0	29.9	29.7	29.4	28.3	29.0	29.5			
150	28.6	28.6	27.5	27.4	27.9	27.9	28.6	28.8	28.6	28.8	28.8	28.7	28.5	27.6	27.8	28.3			
155	27.4	26.9	26.6	26.4	26.2	26.7	27.2	27.6	27.7	27.3	27.4	27.6	26.9	26.8	26.5	26.6			
160	26.3	25.9	25.6	25.6	26.0	25.6	23.7	26.4	26.1	25.7	26.4	26.2	24.0	25.6	24.8	25.7			
165	19.8	23.8	24.5	24.4	24.6	20.4	22.5	25.1	24.7	24.4	24.7	21.1	22.2	23.8	22.8	24.3			
170	20.6	20.5	21.0	21.3	20.8	20.5	19.9	21.2	21.9	21.8	20.9	20.4	19.5	21.0	20.1	21.2			
175	16.6	16.5	16.8	16.4	15.8	16.1	16.2	17.3	17.0	17.1	16.6	15.5	15.6	14.9	15.2	15.8			
180	18.7	20.0	21.7	20.8	18.5	18.2	19.1	20.1	18.6	18.8	19.0	19.0	18.3	17.9	18.1	18.8			

C Range: 0 - 360DEG  
 C Interval: 22.5DEG  
 Test Speed: HIGH  
 Temperature:25.1DEG  
 Operators:Evan  
 Test Date:2022-11-21

γ Range: 0 - 180DEG  
 γ Interval: 1.0DEG  
 Test System:EVERFINE GO-R5000\_V2 SYSTEM V2.0.351  
 Humidity:44%  
 Test Distance:2.532m [K=1.0000]  
 Remarks: