



LED OUTDOOR WALL SCONCE

► **DESIGN & OPTIONS** - LED OUTDOOR WALL SCONCE has a modern, multipurpose design and a stylish look with efficient lighting. The durable aluminum base is highly resistant to rust, and the PMMA lens is UV resistant. The 120° beam angle grants you smooth lighting. The modern LED dimmers provide smooth dimming capabilities ranging from 100% to 10%. The fixture includes a CCT option, letting you set it to 3000K, 4000K or 5000K with a simple switch. Models with 120-277V and built-in dusk-to-dawn photocell are also available. The photocell allows the fixture to automatically turn on/off depending on the time of day. It comes in a BRUSHED NICKEL or BRONZE finish.

► **INSTALLATION** - Installation is quick and easy: just attach the wall plate to the outlet box with screws, connect the wires, and fasten the fixture to the wall plate. Screws, wire nuts and all necessary installation accessories are provided. Refer to install instructions for detailed steps.

► **APPLICATION** - This LED OUTDOOR WALL SCONCE is an ideal maintenance free solution for residential and commercial installations. It creates a cozy ambience that is great for indoor and outdoor projects such as decks, front doors, porches, patios, gardens, corridors, balconies, villas, and walkways. The fixture is Wet location rated and suitable for severe weather conditions.

► **ENERGY SAVING & EFFICIENCY** - Replacing an incandescent fixture with LED OUTDOOR WALL SCONCE can save you 8 times as much on your current energy bill. With a lifespan of 50,000 hours, these fixtures are made to last decades under normal operation! This fixture will save you a significant amount of money in its lifetime.

► **CERTIFICATION & WARRANTY** - Buy with confidence: ASD provides a 5-year warranty along with ETL and ENERGY STAR certifications to guarantee top quality products and safety!

Top US certifications allow participation in rebates; please check the rebate programs available in your state.

Catalog number	
Notes	
Type	



OPTION

PRODUCT LEGEND:

Family	Modification	Voltage	Dimmable	Watts	CCT	Options	Finish
ASD-OLWS	21	MV	X	15	CC	XX	XX
LED Outdoor Wall Sconce		120-277 V	D = Dimmable N = Non-dimmable	15 W	3,000/4,000/5,000 K	Blank = No options PC = Photocell	NK = Brushed Nickel BZ = Oil Rubbed Bronze

LED OUTDOOR WALL SCONCE:

Model	Watts	Voltage	Dimmable	Lumens	CCT	Options	Finish	Dimensions (LxWxH)	UPC
ASD-OLWS-21-D15CC-NK	15 W	120 V	TRIAC	950 lm	3,000/4,000/5,000 K	-	Brushed Nickel	7" x 3" x 10"	810050731379
ASD-OLWS-21-D15CC-BZ	15 W	120 V	TRIAC	950 lm	3,000/4,000/5,000 K	-	Oil Rubbed Bronze	7" x 3" x 10"	810050731386
ASD-OLWS-21-MV-N15CC-PC-NK	15 W	120-277 V	NO	950 lm	3,000/4,000/5,000 K	Photocell	Brushed Nickel	7" x 3" x 10"	810050732871
ASD-OLWS-21-MV-N15CC-PC-BZ	15 W	120-277 V	NO	950 lm	3,000/4,000/5,000 K	Photocell	Oil Rubbed Bronze	7" x 3" x 10"	810050732888

ORDERING INFORMATION:

Model	Pcs in middle box	Middle box Size	Middle box Weight	GTIN 14 for Middle box	Pcs. per Carton	Carton Size	Carton Weight	GTIN 14 for Carton
ASD-OLWS-21-D15CC-NK	2	12.2" x 9.4" x 9.8"	5.6 lb	10810050731376	4	12.8" x 19.7" x 10.4"	12.7 lb	20810050731373
ASD-OLWS-21-D15CC-BZ	2	12.2" x 9.4" x 9.8"	5.6 lb	10810050731383	4	12.8" x 19.7" x 10.4"	12.7 lb	20810050731380
ASD-OLWS-21-MV-N15CC-PC-NK	2	12.2" x 9.4" x 9.8"	5.6 lb	10810050732878	4	12.8" x 19.7" x 10.4"	12.7 lb	20810050732875
ASD-OLWS-21-MV-N15CC-PC-BZ	2	12.2" x 9.4" x 9.8"	5.6 lb	10810050732885	4	12.8" x 19.7" x 10.4"	12.7 lb	20810050732882

For most up-to-date spec sheets please refer to asd-lighting.com

ASD LIGHTING CORP

E-mail: orders@asd-lighting.com | Web site: www.asd-lighting.com





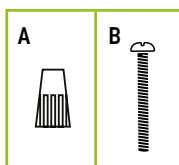
LED OUTDOOR WALL SCONCE

PRODUCT SPECIFICATIONS:

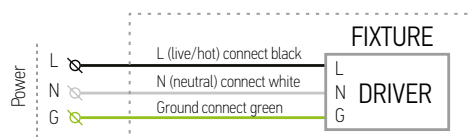
Construction & Materials		
Housing	Aluminum	
Lens	PMMA	
Finish Color	Brushed Nickel, Oil Rubbed Bronze	
Weight	2.2 lb (1 kg)	
Environmental System		
Work Environment	Suitable for Wet Locations	
Operating Temperature	ASD-OLWS-21-D15CC-NK	-40°F to 113°F (-40°C to 45°C)
	ASD-OLWS-21-D15CC-BZ	-40°F to 113°F (-40°C to 45°C)
	ASD-OLWS-21-MV-N15CC-PC-NK	-4°F to 113°F (-20°C to 45°C)
	ASD-OLWS-21-MV-N15CC-PC-BZ	-4°F to 113°F (-20°C to 45°C)
L-70 Life	> 50,000 hrs	
Optical System		
Luminous Flux	950 lm	
Color Temperature	3,000/4,000/5,000 K	
CRI	> 80	
Electrical System		
Input Voltage	120 V, 120-277 V	
Max input current	ASD-OLWS-21-D15CC-NK	0.19 A
	ASD-OLWS-21-D15CC-BZ	0.19 A
	ASD-OLWS-21-MV-N15CC-PC-NK	0.3 A
	ASD-OLWS-21-MV-N15CC-PC-BZ	0.3 A
Inrush current (Action time)	ASD-OLWS-21-D15CC-NK	0.125 A (0.1 S)
	ASD-OLWS-21-D15CC-BZ	0.125 A (0.1 S)
	ASD-OLWS-21-MV-N15CC-PC-NK	0.2 A (0.2 S)
	ASD-OLWS-21-MV-N15CC-PC-BZ	0.2 A (0.2 S)
AC input range	ASD-OLWS-21-D15CC-NK	min 100 V max 132 V
	ASD-OLWS-21-D15CC-BZ	min 100 V max 132 V
	ASD-OLWS-21-MV-N15CC-PC-NK	min 120 V max 277 V
	ASD-OLWS-21-MV-N15CC-PC-BZ	min 120 V max 277 V
Off State Power	0 W	
Power Consumption	15 W	
Power Factor	> 0.9	
Dimming range		
10-100%		
Dimming compatible controls		
Brand	Lutron	
Models	DVCL-153P	PD-6WCL
	TGCL-153P	6672
	CTCL-153P	6674
Regular and Voluntary Certifications		
5-year limited warranty	cETLus certified 4001256	Energy Star listed

PACKAGE CONTENTS:

Description	Q-ty
LED Outdoor Wall Sconce or LED Outdoor Wall Sconce with photocell	1
Wire Nut (A)	3
Screws (B)	2
Box	1
Cut sheet	2



ELECTRICAL SCHEMATIC DIAGRAM:



PHOTOCELL SETTINGS:



- The fixtures with a built-in photocell automatically turn off during daylight hours.
- The light is always ON when luminance is < 90 lux (night time).
 - The light is always OFF when luminance is > 90 lux (day time).

INSTALLATION GUIDE

IMPORTANT SAFETY INFORMATION:

- Please read all the instructions below before installation.
- Make sure that the supply voltage corresponds to the rated product voltage.
 - The product must be installed by a qualified electrician in accordance with the National Electrical Code and corresponding local codes.
 - If the product is damaged, do not use it.

WARNING

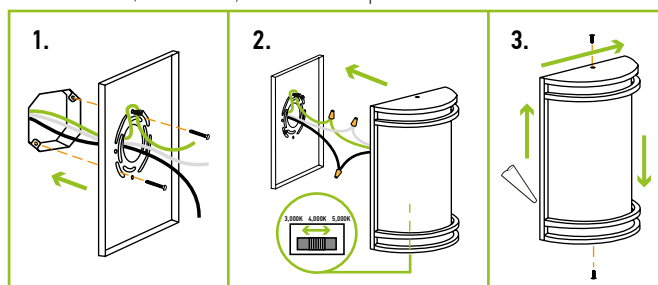
RISK OF PERSONAL INJURY – READ and follow all WARNINGS and installation instructions.

- Keep or give to the owner for future reference.
- Risk of cuts:** Wear gloves to prevent cuts or abrasions when removing from carton, handling, installing, and maintaining this product.
 - Risk of electric shock:** This product must be installed in accordance with the applicable installation code by a person familiar with the construction and operation of the product and the hazards involved.
 - Risk of Fire:** Minimum 194°F supply conductors. Consult a qualified electrician to ensure correct branch circuit conductor.
- ASD® assumes no responsibility for claims arising out of improper or careless installation or handling of this product.

INSTALLATION STEPS:

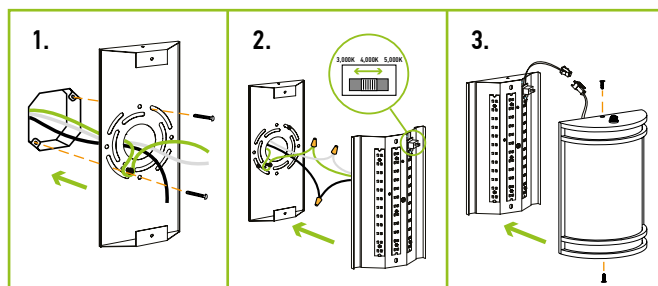
For models without photocell

- Pull the power supply wires out from the outlet box and mount the Wall plate to outlet box using Mounting screws.
- Connect the wires: Black to Black, White to White, Green to Green. Secure the connection with Wire Nuts. Tuck all the wires back into the outlet box. Choose needed color temperature by adjusting the switch position.
- Attach the Fixture back plate firmly to Wall plate and mount against the wall. Secure in place with Side mount screws. For Outdoor locations it is recommended to use silicone (not included) as shown on a picture.



For models with photocell

- Pull the power supply wires out from the outlet box and mount the Wall plate to outlet box using Mounting screws.
- Connect the wires: Black to Black, White to White, Green to Green. Secure the connection with Wire Nuts. Tuck all the wires back into the outlet box. Attach the led module to the wall plate using two screws. Choose needed color temperature by adjusting the switch position.
- Link the photocell connector with led module connector. Attach the lens to the wall plate. Secure in place with side mount screws. For Outdoor locations it is recommended to use silicone (not included).



For most up-to-date spec sheets please refer to asd-lighting.com