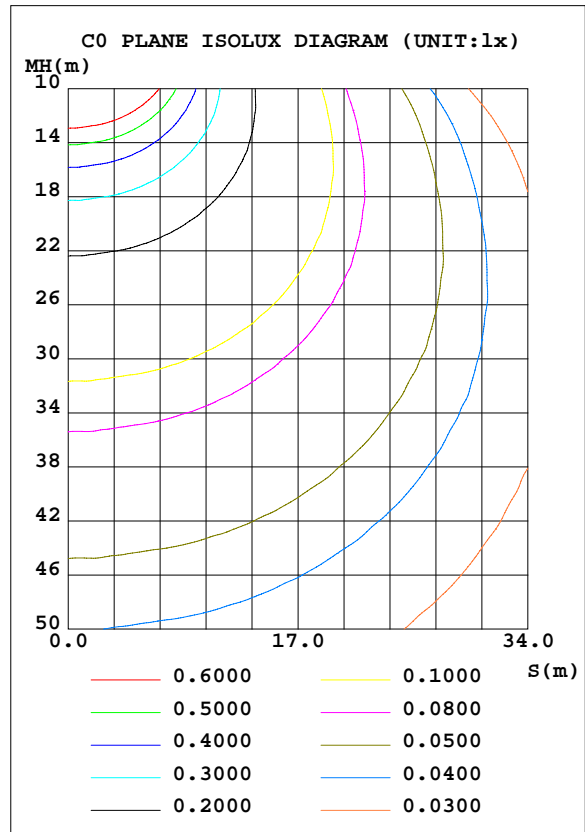
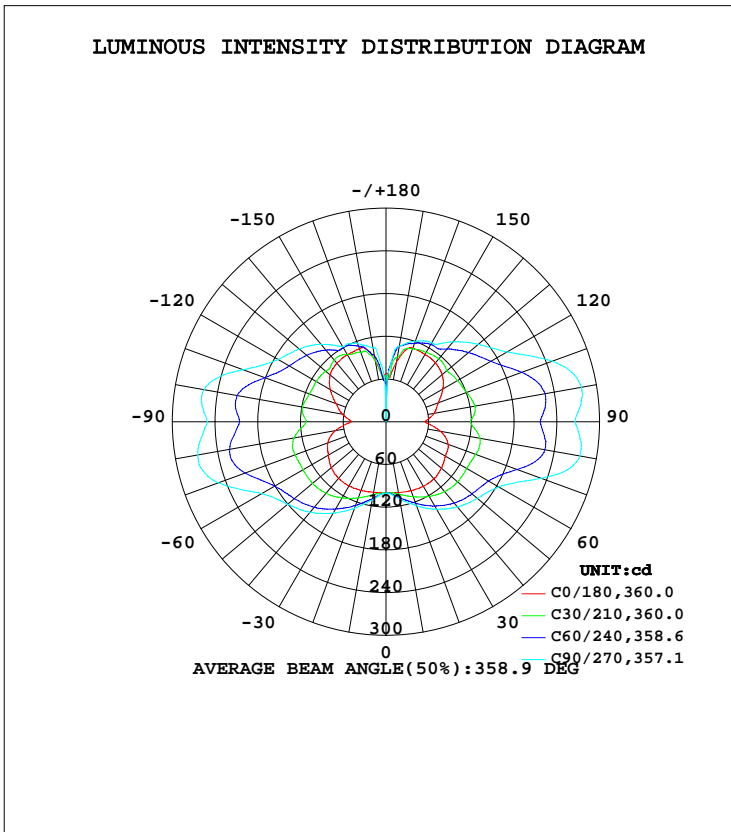


LUMINAIRE PHOTOMETRIC TEST REPORT

| | | |
|--|----------|------------------|
| Test:U:277.00V I:0.1060A P:26.130W PF:0.8898 Freq:60.00Hz Lamp Flux:1810.35x1 lm | | |
| NAME: | TYPE:LED | WEIGHT: |
| SPEC.: | DIM.: | SERIAL No.: |
| MFR.: ASD Lighting corp | SUR.: | Shielding Angle: |

| DATA OF LAMP | | PHOTOMETRIC DATA Eff: 69.28 lm/W | | | |
|------------------|------------------------|----------------------------------|---------|--------------------|------------|
| MODEL | SD-LWS27-MV-24D24CC-BK | I _{max} (cd) | 278.7 | S/MH(C0/180) | 1.59 |
| NOMINAL POWER(W) | 24 | LOR(%) | 100.0 | S/MH(C90/270) | 2.31 |
| RATED VOLTAGE(V) | 120-277 | TOTAL FLUX(lm) | 1810.4 | η UP, DN(C0-180) | 24.7, 25.6 |
| NOMINAL FLUX(lm) | 1810.35 | CIE CLASS | DIFFUSE | η UP, DN(C180-360) | 23.4, 26.3 |
| LAMPS INSIDE | 1 | η up(%) | 48.1 | CIBSE SHR NOM | 2.00 |
| TEST VOLTAGE(V) | 277 | η down(%) | 51.9 | CIBSE SHR MAX | 2.00 |



C Range: 0 - 360DEG
 C Interval: 15.0DEG
 Test Speed: HIGH
 Temperature: 25.0DEG
 Operators: Alan Wang
 Test Date: 08 May 2023

γ Range: 0 - 180DEG
 γ Interval: 1.0DEG
 Test System: EVERFINE GO-R5000_V2 SYSTEM V2.00.416
 Humidity: 43.5%
 Test Distance: 2.500m [K=1.0390]
 Remarks:

ZONAL FLUX DIAGRAM

ZONAL FLUX DIAGRAM:

| γ | C0 | C45 | C90 | C135 | C180 | C225 | C270 | C315 | γ | Φ zone | Φ total | %lum,lamp |
|----------|-----------------------|-------|-------|-------|-------|-------|-------|-------|----------|-------------|--------------|-----------|
| 10 | 101.0 | 105.8 | 109.9 | 105.1 | 100.8 | 106.7 | 111.6 | 105.9 | 0- 10 | 9.829 | 9.829 | 0.54,0.54 |
| 20 | 103.2 | 117.5 | 125.4 | 116.0 | 102.7 | 119.9 | 129.2 | 118.1 | 10- 20 | 31.63 | 41.46 | 2.29,2.29 |
| 30 | 104.8 | 129.4 | 141.7 | 127.6 | 104.0 | 133.6 | 147.8 | 131.0 | 20- 30 | 56.77 | 98.23 | 5.43,5.43 |
| 40 | 104.9 | 139.8 | 156.3 | 136.5 | 103.9 | 144.9 | 166.1 | 141.7 | 30- 40 | 83.59 | 181.8 | 10,10 |
| 50 | 101.8 | 145.8 | 167.3 | 141.7 | 100.3 | 152.4 | 180.2 | 148.4 | 40- 50 | 109.0 | 290.8 | 16.1,16.1 |
| 60 | 96.51 | 149.4 | 183.2 | 143.8 | 93.44 | 158.1 | 202.2 | 152.4 | 50- 60 | 130.6 | 421.4 | 23.3,23.3 |
| 70 | 92.79 | 162.4 | 232.1 | 152.5 | 87.04 | 170.9 | 250.8 | 163.5 | 60- 70 | 155.2 | 576.6 | 31.8,31.8 |
| 80 | 77.74 | 177.2 | 276.6 | 161.8 | 72.08 | 175.1 | 268.2 | 164.4 | 70- 80 | 182.2 | 758.8 | 41.9,41.9 |
| 90 | 54.80 | 165.8 | 265.6 | 149.1 | 48.56 | 157.4 | 251.0 | 146.7 | 80- 90 | 180.6 | 939.5 | 51.9,51.9 |
| 100 | 68.63 | 173.9 | 278.4 | 158.7 | 62.29 | 163.9 | 259.3 | 151.9 | 90-100 | 177.6 | 1117 | 61.7,61.7 |
| 110 | 78.27 | 160.0 | 248.8 | 149.6 | 74.76 | 146.7 | 213.8 | 136.1 | 100-110 | 169.4 | 1286 | 71.1,71.1 |
| 120 | 92.19 | 143.2 | 196.2 | 137.0 | 90.43 | 136.0 | 175.0 | 128.4 | 110-120 | 141.4 | 1428 | 78.9,78.9 |
| 130 | 103.0 | 132.1 | 169.5 | 127.5 | 102.6 | 129.5 | 159.4 | 123.1 | 120-130 | 119.2 | 1547 | 85.5,85.5 |
| 140 | 108.2 | 120.9 | 146.4 | 119.9 | 107.7 | 118.5 | 142.0 | 114.0 | 130-140 | 97.74 | 1645 | 90.9,90.9 |
| 150 | 109.2 | 120.2 | 128.3 | 118.5 | 108.6 | 117.8 | 121.5 | 116.3 | 140-150 | 74.59 | 1719 | 95,95 |
| 160 | 109.9 | 113.8 | 120.5 | 110.6 | 109.5 | 105.7 | 117.2 | 108.2 | 150-160 | 52.89 | 1772 | 97.9,97.9 |
| 170 | 84.89 | 101.1 | 107.9 | 94.45 | 86.70 | 88.54 | 105.5 | 102.6 | 160-170 | 30.21 | 1802 | 99.6,99.6 |
| 180 | 68.08 | 59.09 | 0 | 55.16 | 67.59 | 61.45 | 28.95 | 52.92 | 170-180 | 7.872 | 1810 | 100,100 |
| DEG | LUMINOUS INTENSITY:cd | | | | | | | | | UNIT:lm | | |

Conical surface Flux(90deg): 233.36 lm

%lum = 12.9%

%lamp = 12.9%

Conical surface Flux(120deg): 421.41 lm

%lum = 23.3%

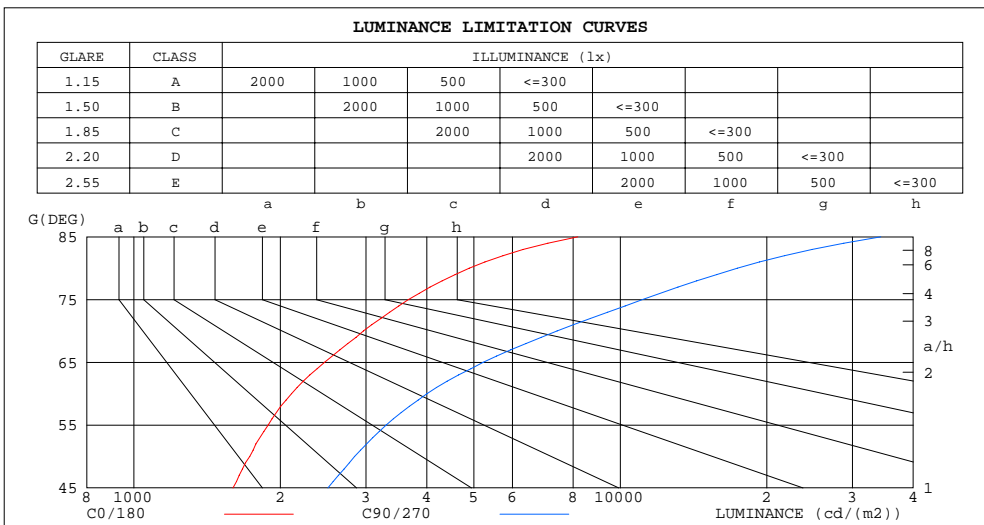
%lamp = 23.3%

C Range: 0 - 360DEG
 C Interval: 15.0DEG
 Test Speed: HIGH
 Temperature: 25.0DEG
 Operators: Alan Wang
 Test Date: 08 May 2023

γ Range: 0 - 180DEG
 γ Interval: 1.0DEG
 Test System: EVERFINE GO-R5000_V2 SYSTEM V2.00.416
 Humidity: 43.5%
 Test Distance: 2.500m [K=1.0390]
 Remarks:

LUMINANCE LIMITATION CURVES

| | | |
|--|----------|------------------|
| Test:U:277.00V I:0.1060A P:26.130W PF:0.8898 Freq:60.00Hz Lamp Flux:1810.35x1 lm | | |
| NAME: | TYPE:LED | WEIGHT: |
| SPEC.: | DIM.: | SERIAL No.: |
| MFR.: ASD Lighting corp | SUR.: | Shielding Angle: |



| LUMINANCE cd/(m2) | | |
|-------------------|--------|---------|
| G(DEG) | C0/180 | C90/270 |
| 85 | 8176 | 34303 |
| 80 | 4893 | 17407 |
| 75 | 3669 | 11101 |
| 70 | 2965 | 7416 |
| 65 | 2465 | 5224 |
| 60 | 2109 | 4004 |
| 55 | 1888 | 3300 |
| 50 | 1730 | 2844 |
| 45 | 1599 | 2505 |

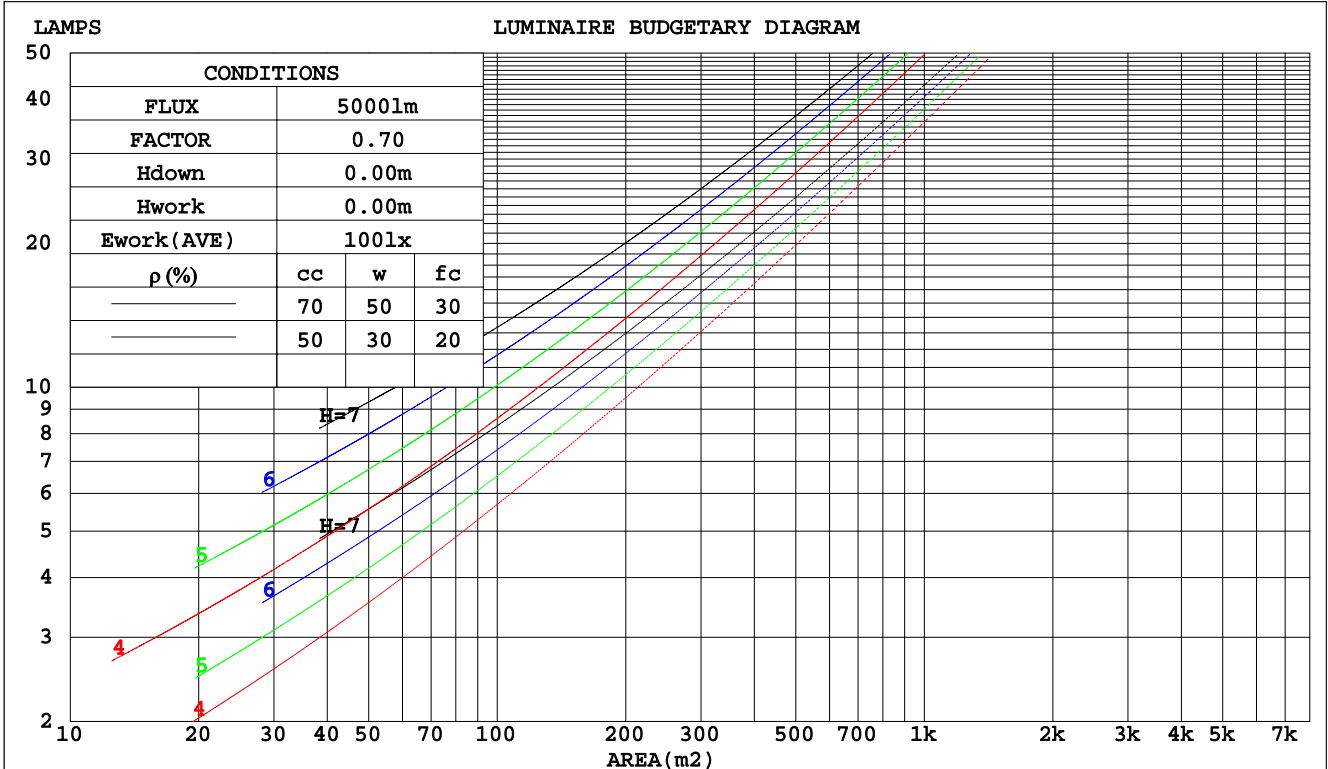
C Range: 0 - 360DEG
 C Interval: 15.0DEG
 Test Speed: HIGH
 Temperature: 25.0DEG
 Operators: Alan Wang
 Test Date: 08 May 2023

γ Range: 0 - 180DEG
 γ Interval: 1.0DEG
 Test System: EVERFINE GO-R5000_V2 SYSTEM V2.00.416
 Humidity: 43.5%
 Test Distance: 2.500m [K=1.0390]
 Remarks:

CU AND LUMINAIRE BUDGETARY ESTIMATE DIAGRAM

| | | |
|--|----------|------------------|
| Test:U:277.00V I:0.1060A P:26.130W PF:0.8898 Freq:60.00Hz Lamp Flux:1810.35x1 lm | | |
| NAME: | TYPE:LED | WEIGHT: |
| SPEC.: | DIM.: | SERIAL No.: |
| MFR.: ASD Lighting corp | SUR.: | Shielding Angle: |

| pcc | 80% | | | 70% | | | 50% | | | 30% | | | 10% | | | 0 |
|------|-----------------------|------|------|-----|-----|-----|---------------------------------|-----|-----|-----|-----|-----|-----|-----|-----|-----|
| | 50% | 30% | 10% | 50% | 30% | 10% | 50% | 30% | 10% | 50% | 30% | 10% | 50% | 30% | 10% | 0 |
| pw | | | | | | | | | | | | | | | | |
| pfc | 20% | | | 20% | | | 20% | | | 20% | | | 20% | | | 0 |
| RCR | RCR:Room Cavity Ratio | | | | | | Coefficients of Utilization(CU) | | | | | | | | | |
| 0.0 | 1.08 | 1.08 | 1.08 | .99 | .99 | .99 | .84 | .84 | .84 | .71 | .71 | .71 | .58 | .58 | .58 | .52 |
| 1.0 | .87 | .81 | .76 | .80 | .74 | .70 | .66 | .62 | .59 | .54 | .51 | .49 | .43 | .41 | .39 | .33 |
| 2.0 | .73 | .65 | .58 | .67 | .60 | .53 | .55 | .50 | .45 | .45 | .41 | .37 | .35 | .32 | .29 | .24 |
| 3.0 | .63 | .53 | .46 | .57 | .49 | .43 | .47 | .41 | .36 | .38 | .33 | .29 | .30 | .26 | .23 | .18 |
| 4.0 | .54 | .45 | .38 | .50 | .41 | .35 | .41 | .35 | .29 | .33 | .28 | .24 | .26 | .22 | .18 | .14 |
| 5.0 | .48 | .38 | .31 | .44 | .35 | .29 | .36 | .30 | .24 | .29 | .24 | .20 | .23 | .19 | .15 | .12 |
| 6.0 | .43 | .33 | .27 | .39 | .31 | .25 | .32 | .26 | .21 | .26 | .21 | .17 | .20 | .16 | .13 | .10 |
| 7.0 | .38 | .29 | .23 | .35 | .27 | .21 | .29 | .23 | .18 | .24 | .18 | .14 | .18 | .14 | .11 | .08 |
| 8.0 | .34 | .26 | .20 | .32 | .24 | .18 | .26 | .20 | .15 | .21 | .16 | .13 | .17 | .13 | .10 | .07 |
| 9.0 | .31 | .23 | .17 | .29 | .21 | .16 | .24 | .18 | .14 | .20 | .15 | .11 | .15 | .11 | .09 | .06 |
| 10.0 | .29 | .21 | .15 | .26 | .19 | .14 | .22 | .16 | .12 | .18 | .13 | .10 | .14 | .10 | .08 | .06 |



C Range: 0 - 360DEG
 C Interval: 15.0DEG
 Test Speed: HIGH
 Temperature: 25.0DEG
 Operators: Alan Wang
 Test Date: 08 May 2023

γ Range: 0 - 180DEG
 γ Interval: 1.0DEG
 Test System: EVERFINE GO-R5000_V2 SYSTEM V2.00.416
 Humidity: 43.5%
 Test Distance: 2.500m [K=1.0390]
 Remarks:

WEC AND CCEC

| | | |
|--|----------|------------------|
| Test:U:277.00V I:0.1060A P:26.130W PF:0.8898 Freq:60.00Hz Lamp Flux:1810.35x1 lm | | |
| NAME: | TYPE:LED | WEIGHT: |
| SPEC.: | DIM.: | SERIAL No.: |
| MFR.: ASD Lighting corp | SUR.: | Shielding Angle: |

| ρcc | 80% | | | 70% | | | 50% | | | 30% | | | 10% | | | 0 |
|------|-----------------------|------|------|------|------|------|---------------------------------|------|------|------|------|------|------|------|------|---|
| ρw | 50% | 30% | 10% | 50% | 30% | 10% | 50% | 30% | 10% | 50% | 30% | 10% | 50% | 30% | 10% | 0 |
| ρfc | 20% | | | 20% | | | 20% | | | 20% | | | 20% | | | 0 |
| RCR | RCR:Room Cavity Ratio | | | | | | Wall Exitance Coefficients(WEC) | | | | | | | | | |
| 0.0 | | | | | | | | | | | | | | | | |
| 1.0 | .418 | .238 | .075 | .396 | .226 | .072 | .355 | .204 | .065 | .318 | .183 | .059 | .283 | .164 | .053 | |
| 2.0 | .348 | .191 | .058 | .328 | .181 | .056 | .290 | .162 | .050 | .256 | .144 | .045 | .224 | .127 | .040 | |
| 3.0 | .303 | .161 | .048 | .284 | .152 | .046 | .250 | .135 | .041 | .218 | .120 | .037 | .189 | .105 | .032 | |
| 4.0 | .269 | .140 | .041 | .252 | .132 | .039 | .221 | .117 | .035 | .191 | .103 | .031 | .164 | .089 | .027 | |
| 5.0 | .242 | .123 | .036 | .227 | .116 | .034 | .198 | .103 | .030 | .171 | .090 | .027 | .146 | .078 | .023 | |
| 6.0 | .220 | .110 | .032 | .206 | .104 | .030 | .180 | .092 | .027 | .155 | .080 | .024 | .131 | .069 | .021 | |
| 7.0 | .202 | .100 | .028 | .189 | .094 | .027 | .164 | .083 | .024 | .141 | .072 | .021 | .120 | .062 | .018 | |
| 8.0 | .187 | .091 | .026 | .175 | .086 | .024 | .152 | .076 | .022 | .130 | .066 | .019 | .110 | .057 | .016 | |
| 9.0 | .173 | .084 | .023 | .162 | .079 | .022 | .141 | .070 | .020 | .121 | .061 | .017 | .102 | .052 | .015 | |
| 10.0 | .162 | .078 | .022 | .151 | .073 | .020 | .132 | .064 | .018 | .113 | .056 | .016 | .095 | .048 | .014 | |

| ρcc | 80% | | | 70% | | | 50% | | | 30% | | | 10% | | | 0 |
|------|-----------------------|------|------|------|------|------|--|------|------|------|------|------|------|------|------|---|
| ρw | 50% | 30% | 10% | 50% | 30% | 10% | 50% | 30% | 10% | 50% | 30% | 10% | 50% | 30% | 10% | 0 |
| ρfc | 20% | | | 20% | | | 20% | | | 20% | | | 20% | | | 0 |
| RCR | RCR:Room Cavity Ratio | | | | | | Ceiling Cavity Exitance Coefficients(CCEC) | | | | | | | | | |
| 0.0 | .557 | .557 | .557 | .476 | .476 | .476 | .325 | .325 | .325 | .187 | .187 | .187 | .060 | .060 | .060 | |
| 1.0 | .557 | .525 | .495 | .477 | .450 | .426 | .326 | .310 | .295 | .188 | .179 | .171 | .060 | .058 | .055 | |
| 2.0 | .552 | .504 | .463 | .473 | .434 | .400 | .324 | .300 | .279 | .187 | .174 | .164 | .060 | .056 | .053 | |
| 3.0 | .545 | .489 | .444 | .467 | .421 | .385 | .321 | .293 | .270 | .185 | .171 | .159 | .060 | .056 | .052 | |
| 4.0 | .537 | .477 | .431 | .461 | .412 | .374 | .317 | .287 | .264 | .183 | .168 | .156 | .059 | .055 | .051 | |
| 5.0 | .530 | .468 | .422 | .455 | .405 | .368 | .313 | .283 | .260 | .182 | .166 | .154 | .059 | .054 | .051 | |
| 6.0 | .523 | .461 | .416 | .449 | .399 | .363 | .310 | .279 | .257 | .180 | .164 | .152 | .058 | .054 | .050 | |
| 7.0 | .516 | .455 | .412 | .444 | .394 | .359 | .307 | .276 | .254 | .178 | .163 | .151 | .058 | .053 | .050 | |
| 8.0 | .509 | .449 | .408 | .438 | .390 | .356 | .303 | .274 | .253 | .176 | .161 | .151 | .057 | .053 | .050 | |
| 9.0 | .503 | .445 | .406 | .433 | .386 | .354 | .300 | .271 | .251 | .175 | .160 | .150 | .057 | .053 | .050 | |
| 10.0 | .497 | .441 | .404 | .429 | .383 | .352 | .297 | .269 | .250 | .173 | .159 | .149 | .056 | .052 | .050 | |

C Range: 0 - 360DEG
 C Interval: 15.0DEG
 Test Speed: HIGH
 Temperature: 25.0DEG
 Operators: Alan Wang
 Test Date: 08 May 2023

γ Range: 0 - 180DEG
 γ Interval: 1.0DEG
 Test System: EVERFINE GO-R5000_V2 SYSTEM V2.00.416
 Humidity: 43.5%
 Test Distance: 2.500m [K=1.0390]
 Remarks:

UGR(Unified Glare Rating) Table

| | | | | | | | | | | |
|--|------------------|------|------|------|----------|----------------|------|------------------|------|------|
| Test:U:277.00V I:0.1060A P:26.130W PF:0.8898 Freq:60.00Hz Lamp Flux:1810.35x1 lm | | | | | | | | | | |
| NAME: | | | | | TYPE:LED | | | WEIGHT: | | |
| SPEC.: | | | | | DIM.: | | | SERIAL No.: | | |
| MFR.: ASD Lighting corp | | | | | SUR.: | | | Shielding Angle: | | |
| ceiling/cavity | 0.7 | 0.7 | 0.5 | 0.5 | 0.3 | 0.7 | 0.7 | 0.5 | 0.5 | 0.3 |
| walls | 0.5 | 0.3 | 0.5 | 0.3 | 0.3 | 0.5 | 0.3 | 0.5 | 0.3 | 0.3 |
| working plane | 0.2 | 0.2 | 0.2 | 0.2 | 0.2 | 0.2 | 0.2 | 0.2 | 0.2 | 0.2 |
| Room dimensions | Viewed crosswise | | | | | Viewed endwise | | | | |
| x = 2H y = 2H | 11.7 | 12.8 | 12.6 | 13.7 | 14.8 | 14.4 | 15.5 | 15.2 | 16.4 | 17.5 |
| 3H | 14.5 | 15.5 | 15.4 | 16.4 | 17.6 | 18.6 | 19.6 | 19.5 | 20.5 | 21.7 |
| 4H | 16.0 | 16.9 | 16.9 | 17.8 | 19.0 | 21.2 | 22.1 | 22.1 | 23.0 | 24.2 |
| 6H | 17.5 | 18.4 | 18.4 | 19.3 | 20.5 | 23.8 | 24.7 | 24.7 | 25.7 | 26.9 |
| 8H | 18.2 | 19.1 | 19.1 | 20.0 | 21.2 | 25.2 | 26.1 | 26.1 | 27.0 | 28.2 |
| 12H | 19.0 | 19.9 | 20.0 | 20.8 | 22.0 | 26.6 | 27.5 | 27.6 | 28.4 | 29.6 |
| 4H 2H | 13.4 | 14.4 | 14.3 | 15.3 | 16.5 | 15.1 | 16.1 | 16.0 | 17.0 | 18.2 |
| 3H | 16.3 | 17.1 | 17.2 | 18.1 | 19.3 | 19.5 | 20.4 | 20.5 | 21.3 | 22.5 |
| 4H | 17.9 | 18.7 | 18.8 | 19.6 | 20.8 | 22.3 | 23.0 | 23.2 | 24.0 | 25.2 |
| 6H | 19.5 | 20.2 | 20.4 | 21.1 | 22.4 | 25.1 | 25.8 | 26.0 | 26.8 | 28.0 |
| 8H | 20.3 | 20.9 | 21.2 | 21.9 | 23.2 | 26.6 | 27.2 | 27.5 | 28.2 | 29.5 |
| 12H | 21.1 | 21.7 | 22.1 | 22.7 | 24.0 | 28.1 | 28.7 | 29.1 | 29.7 | 31.0 |
| 8H 4H | 19.5 | 20.1 | 20.4 | 21.1 | 22.4 | 22.7 | 23.3 | 23.6 | 24.3 | 25.6 |
| 6H | 21.3 | 21.9 | 22.3 | 22.9 | 24.2 | 25.8 | 26.3 | 26.8 | 27.3 | 28.6 |
| 8H | 22.3 | 22.8 | 23.3 | 23.8 | 25.1 | 27.5 | 28.0 | 28.5 | 29.0 | 30.3 |
| 12H | 23.3 | 23.7 | 24.3 | 24.7 | 26.0 | 29.3 | 29.8 | 30.3 | 30.8 | 32.1 |
| 12H 4H | 20.1 | 20.7 | 21.1 | 21.7 | 23.0 | 22.7 | 23.3 | 23.7 | 24.3 | 25.6 |
| 6H | 22.2 | 22.6 | 23.1 | 23.6 | 25.0 | 25.9 | 26.4 | 26.9 | 27.4 | 28.7 |
| 8H | 23.2 | 23.7 | 24.2 | 24.7 | 26.0 | 27.7 | 28.2 | 28.7 | 29.2 | 30.5 |
| Variations with the observer position at spacings: | | | | | | | | | | |
| S = 1.0H | + 0.1 / - 0.1 | | | | | + 0.1 / - 0.1 | | | | |
| 1.5H | + 0.2 / - 0.2 | | | | | + 0.2 / - 0.3 | | | | |
| 2.0H | + 0.3 / - 0.4 | | | | | + 0.3 / - 0.4 | | | | |

CIE Pub.117, 1810 lm Total Lamp Luminous Flux Corrected (8log(F/F0) = 2.1)
 Area: 0.0915 m2

C Range: 0 - 360DEG
 C Interval: 15.0DEG
 Test Speed: HIGH
 Temperature: 25.0DEG
 Operators: Alan Wang
 Test Date: 08 May 2023

γ Range: 0 - 180DEG
 γ Interval: 1.0DEG
 Test System: EVERFINE GO-R5000_V2 SYSTEM V2.00.416
 Humidity: 43.5%
 Test Distance: 2.500m [K=1.0390]
 Remarks:

UTILIZATION FACTORS TABLE

| | | |
|--|----------|------------------|
| Test:U:277.00V I:0.1060A P:26.130W PF:0.8898 Freq:60.00Hz Lamp Flux:1810.35x1 lm | | |
| NAME: | TYPE:LED | WEIGHT: |
| SPEC.: | DIM.: | SERIAL No.: |
| MFR.: ASD Lighting corp | SUR.: | Shielding Angle: |

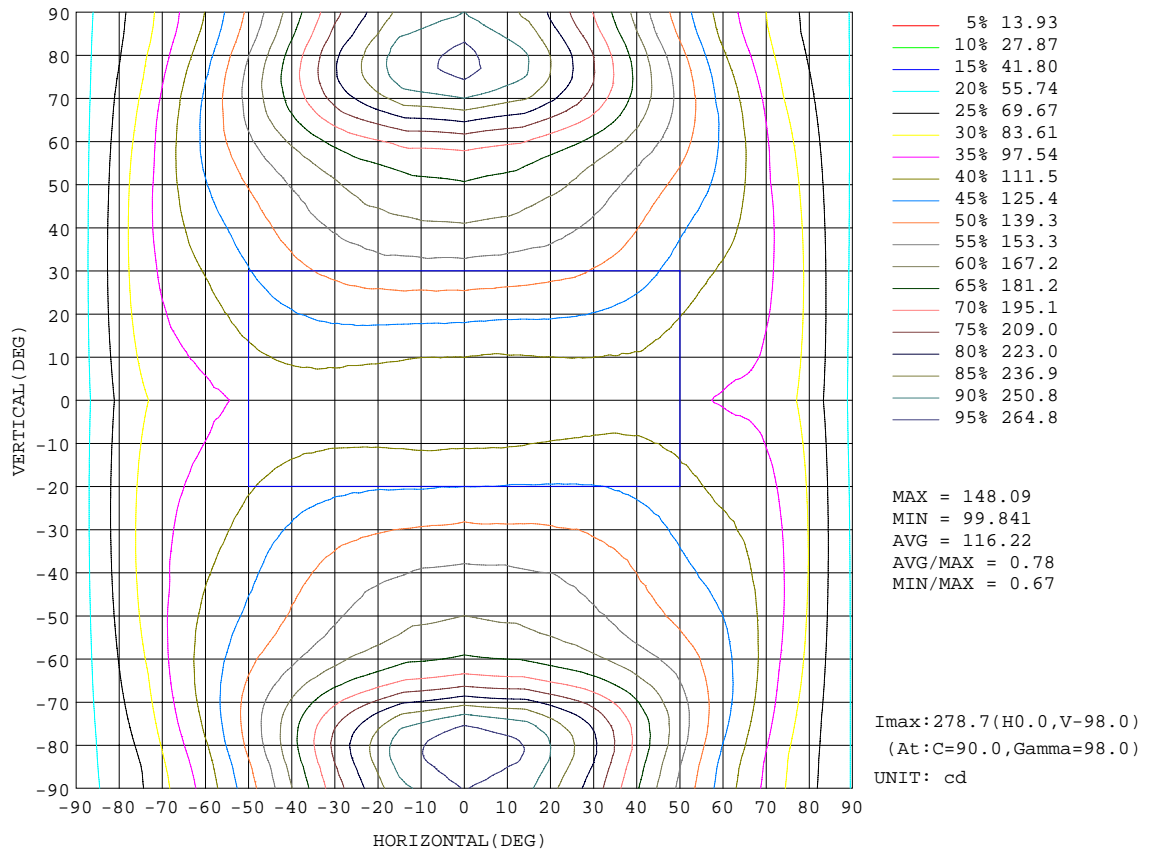
| REFLECTANCE | | | | | | | | | | |
|----------------------------------|---|-----|-----------|-----|-----|-----|---------------|-----|-----|--------|
| Ceiling | 0.8 | 0.8 | 0.8 | 0.7 | 0.7 | 0.7 | 0.5 | 0.5 | 0.5 | 0 |
| Walls | 0.7 | 0.5 | 0.3 | 0.7 | 0.5 | 0.3 | 0.7 | 0.5 | 0.3 | 0 |
| Working plane | 0.2 | 0.2 | 0.2 | 0.2 | 0.2 | 0.2 | 0.2 | 0.2 | 0.2 | 0 |
| ROOM INDEX | UTILIZATION FACTORS(PERCENT) $k(RI) \times RCR = 5$ | | | | | | | | | |
| k = 0.60 | 36 | 23 | 16 | 34 | 22 | 16 | 31 | 21 | 14 | 7 |
| 0.80 | 45 | 31 | 22 | 42 | 29 | 21 | 37 | 26 | 19 | 10 |
| 1.00 | 52 | 37 | 28 | 48 | 35 | 27 | 42 | 33 | 24 | 13 |
| 1.25 | 59 | 44 | 35 | 55 | 42 | 33 | 47 | 37 | 29 | 16 |
| 1.50 | 64 | 50 | 40 | 59 | 47 | 38 | 51 | 41 | 34 | 18 |
| 2.00 | 72 | 59 | 49 | 66 | 55 | 46 | 57 | 47 | 40 | 22 |
| 2.50 | 77 | 65 | 55 | 71 | 60 | 52 | 60 | 52 | 45 | 25 |
| 3.00 | 81 | 70 | 61 | 75 | 65 | 57 | 63 | 56 | 49 | 28 |
| 4.00 | 86 | 76 | 68 | 79 | 71 | 64 | 67 | 61 | 55 | 32 |
| 5.00 | 89 | 81 | 74 | 83 | 75 | 69 | 70 | 64 | 59 | 34 |
| ROOM INDEX | UF(total) | | | | | | | | | Direct |
| According to DIN EN 13032-2 2004 | | | Suspended | | | | SHRNOM = 1.25 | | | |

C Range: 0 - 360DEG
 C Interval: 15.0DEG
 Test Speed: HIGH
 Temperature: 25.0DEG
 Operators: Alan Wang
 Test Date: 08 May 2023

γ Range: 0 - 180DEG
 γ Interval: 1.0DEG
 Test System: EVERFINE GO-R5000_V2 SYSTEM V2.00.416
 Humidity: 43.5%
 Test Distance: 2.500m [K=1.0390]
 Remarks:

ISOCANDELA DIAGRAM

| | | |
|--|----------|------------------|
| Test:U:277.00V I:0.1060A P:26.130W PF:0.8898 Freq:60.00Hz Lamp Flux:1810.35x1 lm | | |
| NAME: | TYPE:LED | WEIGHT: |
| SPEC.: | DIM.: | SERIAL No.: |
| MFR.: ASD Lighting corp | SUR.: | Shielding Angle: |



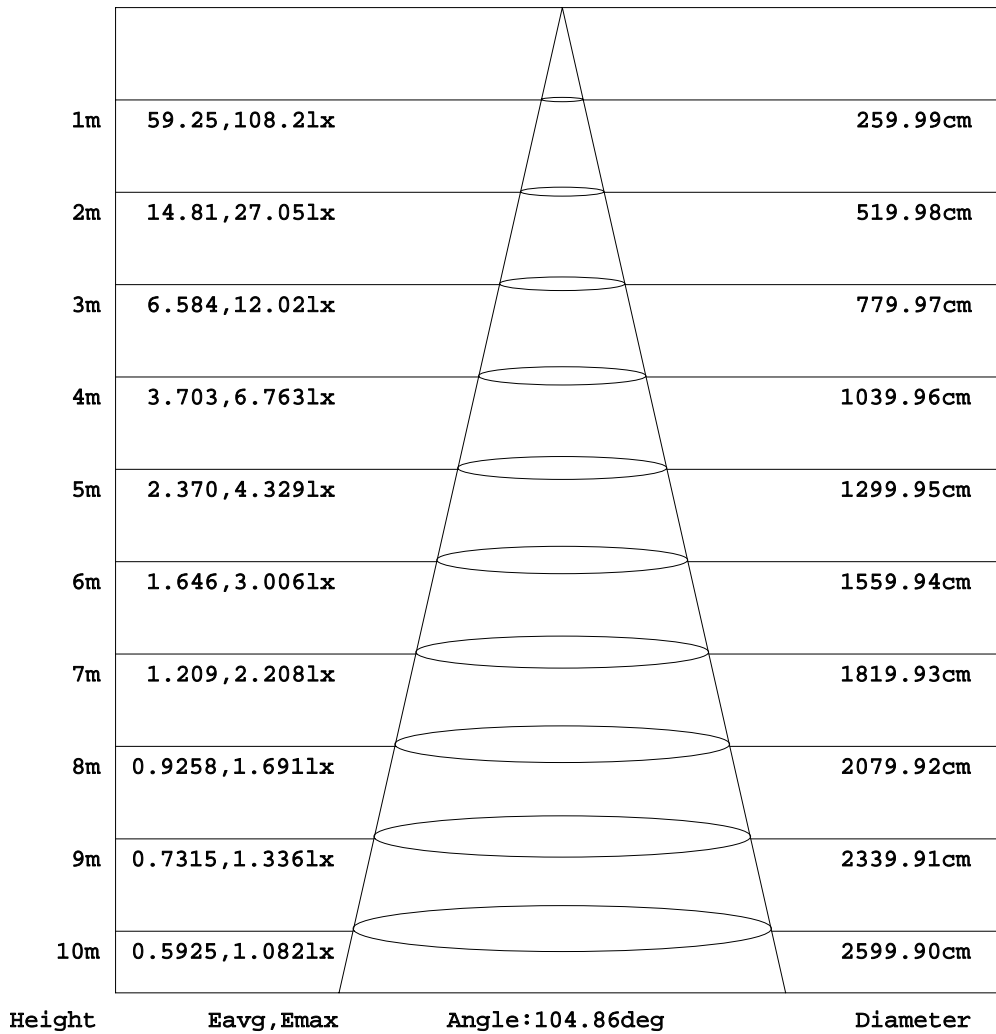
C Range: 0 - 360DEG
 C Interval: 15.0DEG
 Test Speed: HIGH
 Temperature: 25.0DEG
 Operators: Alan Wang
 Test Date: 08 May 2023

γ Range: 0 - 180DEG
 γ Interval: 1.0DEG
 Test System: EVERFINE GO-R5000_V2 SYSTEM V2.00.416
 Humidity: 43.5%
 Test Distance: 2.500m [K=1.0390]
 Remarks:

AAI Figure

| | | |
|--|----------|------------------|
| Test:U:277.00V I:0.1060A P:26.130W PF:0.8898 Freq:60.00Hz Lamp Flux:1810.35x1 lm | | |
| NAME: | TYPE:LED | WEIGHT: |
| SPEC.: | DIM.: | SERIAL No.: |
| MFR.: ASD Lighting corp | SUR.: | Shielding Angle: |

Flux out:327.8 lm



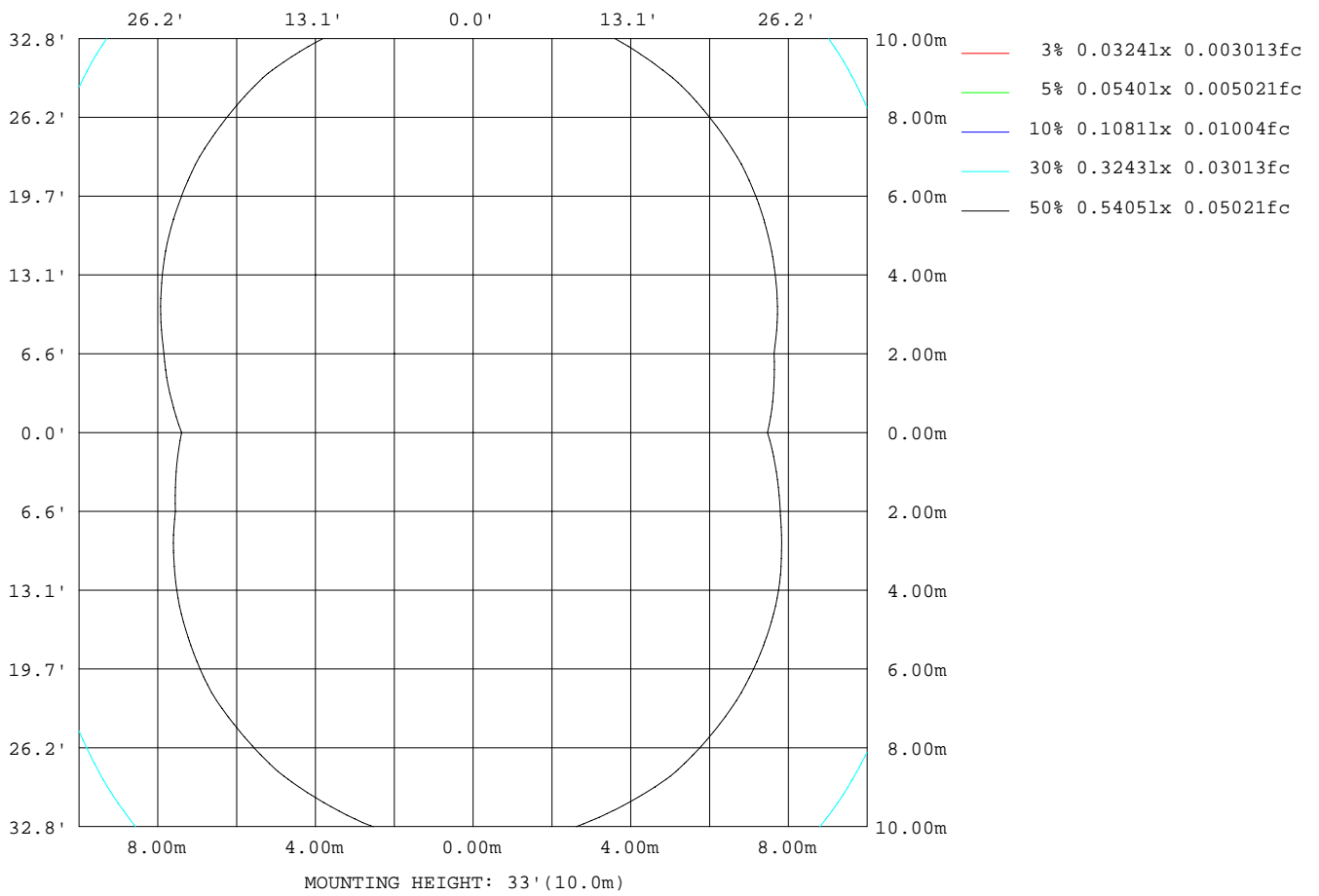
Note:The Curves indicate the illuminated area and the average illumination when the luminaire is at different distance.

C Range: 0 - 360DEG
 C Interval: 15.0DEG
 Test Speed: HIGH
 Temperature: 25.0DEG
 Operators: Alan Wang
 Test Date: 08 May 2023

γ Range: 0 - 180DEG
 γ Interval: 1.0DEG
 Test System: EVERFINE GO-R5000_V2 SYSTEM V2.00.416
 Humidity: 43.5%
 Test Distance: 2.500m [K=1.0390]
 Remarks:

ISOLUX DIAGRAM

| | | |
|--|----------|------------------|
| Test:U:277.00V I:0.1060A P:26.130W PF:0.8898 Freq:60.00Hz Lamp Flux:1810.35x1 lm | | |
| NAME: | TYPE:LED | WEIGHT: |
| SPEC.: | DIM.: | SERIAL No.: |
| MFR.: ASD Lighting corp | SUR.: | Shielding Angle: |



C Range: 0 - 360DEG
 C Interval: 15.0DEG
 Test Speed: HIGH
 Temperature: 25.0DEG
 Operators: Alan Wang
 Test Date: 08 May 2023

γ Range: 0 - 180DEG
 γ Interval: 1.0DEG
 Test System: EVERFINE GO-R5000_V2 SYSTEM V2.00.416
 Humidity: 43.5%
 Test Distance: 2.500m [K=1.0390]
 Remarks:

LED Avg.L Report

| | | |
|--|----------|------------------|
| Test:U:277.00V I:0.1060A P:26.130W PF:0.8898 Freq:60.00Hz Lamp Flux:1810.35x1 lm | | |
| NAME: | TYPE:LED | WEIGHT: |
| SPEC.: | DIM.: | SERIAL No.: |
| MFR.: ASD Lighting corp | SUR.: | Shielding Angle: |

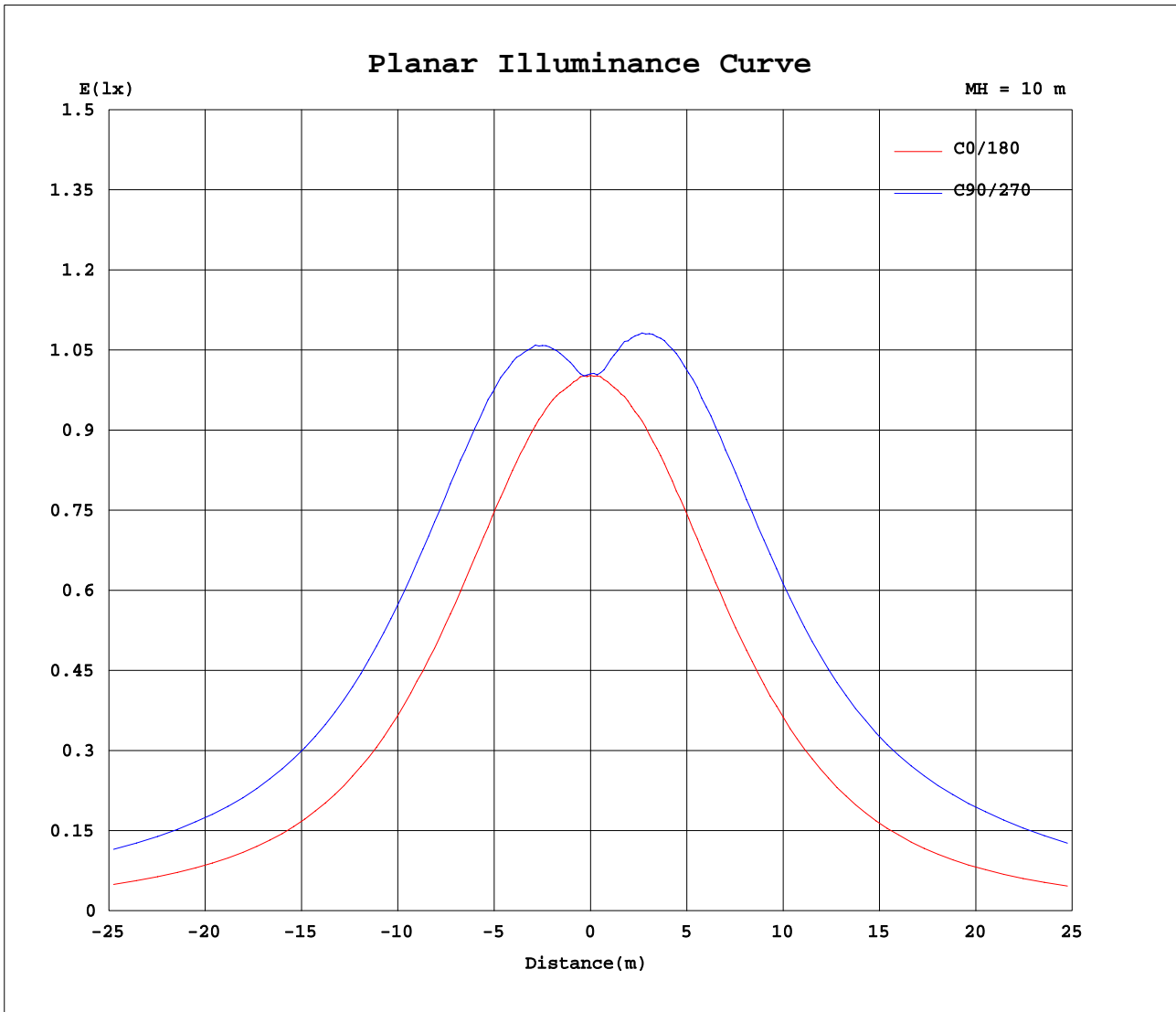
| AvgL | cd/m2 |
|----------------|-------|
| L_0~180(65)av | 2402 |
| L_0~180(75)av | 3548 |
| L_0~180(85)av | 7837 |
| L_90~270(65)av | 5523 |
| L_90~270(75)av | 11169 |
| L_90~270(85)av | 33474 |
| L_45(65)av | 4005 |
| L_45(75)av | 7134 |
| L_45(85)av | 20384 |

Standard: GB/T 29293-2012

C Range: 0 - 360DEG
C Interval: 15.0DEG
Test Speed: HIGH
Temperature: 25.0DEG
Operators: Alan Wang
Test Date: 08 May 2023

γ Range: 0 - 180DEG
 γ Interval: 1.0DEG
Test System: EVERFINE GO-R5000_V2 SYSTEM V2.00.416
Humidity: 43.5%
Test Distance: 2.500m [K=1.0390]
Remarks:

Planar Illuminance Curve



C Range: 0 - 360DEG
 C Interval: 15.0DEG
 Test Speed: HIGH
 Temperature: 25.0DEG
 Operators: Alan Wang
 Test Date: 08 May 2023

γ Range: 0 - 180DEG
 γ Interval: 1.0DEG
 Test System: EVERFINE GO-R5000_V2 SYSTEM V2.00.416
 Humidity: 43.5%
 Test Distance: 2.500m [K=1.0390]
 Remarks:

LUMINOUS DISTRIBUTION INTENSITY DATA

| | | |
|--|----------|------------------|
| Test:U:277.00V I:0.1060A P:26.130W PF:0.8898 Freq:60.00Hz Lamp Flux:1810.35x1 lm | | |
| NAME: | TYPE:LED | WEIGHT: |
| SPEC.: | DIM.: | SERIAL No.: |
| MFR.: ASD Lighting corp | SUR.: | Shielding Angle: |

Table--1

UNIT: cd

| C(DEG) γ (DEG) | 0 | 15 | 30 | 45 | 60 | 75 | 90 | 105 | 120 | 135 | 150 | 165 | 180 | 195 | 210 | 225 | 240 | 255 | 270 |
|-------------------|------|------|------|------|------|------|------|------|------|-------|-------|------|------|------|------|------|------|------|------|
| 0 | 100 | 100 | 100 | 100 | 101 | 100 | 101 | 100 | 100 | 100.0 | 100.0 | 100 | 100 | 100 | 100 | 100 | 101 | 100 | 101 |
| 5 | 100 | 99.9 | 100 | 101 | 102 | 103 | 103 | 103 | 102 | 101 | 100 | 99.9 | 100 | 100 | 101 | 102 | 103 | 104 | 103 |
| 10 | 101 | 101 | 103 | 106 | 108 | 110 | 110 | 110 | 107 | 105 | 103 | 101 | 101 | 101 | 104 | 107 | 110 | 111 | 112 |
| 15 | 102 | 103 | 108 | 111 | 114 | 117 | 117 | 116 | 113 | 110 | 107 | 102 | 102 | 104 | 109 | 113 | 117 | 120 | 120 |
| 20 | 103 | 106 | 112 | 117 | 122 | 125 | 125 | 124 | 121 | 116 | 110 | 104 | 103 | 107 | 114 | 120 | 125 | 128 | 129 |
| 25 | 104 | 109 | 117 | 123 | 129 | 132 | 134 | 132 | 128 | 122 | 115 | 106 | 104 | 110 | 119 | 127 | 133 | 137 | 139 |
| 30 | 105 | 112 | 121 | 129 | 136 | 140 | 142 | 139 | 135 | 128 | 118 | 108 | 104 | 113 | 124 | 134 | 142 | 147 | 148 |
| 35 | 105 | 114 | 125 | 135 | 143 | 148 | 149 | 147 | 141 | 132 | 121 | 110 | 104 | 115 | 128 | 140 | 150 | 155 | 157 |
| 40 | 105 | 115 | 128 | 140 | 149 | 154 | 156 | 153 | 147 | 136 | 124 | 111 | 104 | 116 | 131 | 145 | 157 | 163 | 166 |
| 45 | 103 | 115 | 130 | 143 | 154 | 160 | 162 | 159 | 151 | 140 | 126 | 111 | 103 | 116 | 133 | 150 | 163 | 171 | 173 |
| 50 | 102 | 115 | 131 | 146 | 158 | 165 | 167 | 164 | 155 | 142 | 126 | 110 | 100 | 116 | 135 | 152 | 168 | 177 | 180 |
| 55 | 99.1 | 114 | 131 | 147 | 161 | 170 | 173 | 169 | 158 | 143 | 126 | 108 | 97.1 | 114 | 135 | 155 | 173 | 184 | 189 |
| 60 | 96.5 | 113 | 131 | 149 | 167 | 179 | 183 | 177 | 163 | 144 | 125 | 105 | 93.4 | 112 | 135 | 158 | 181 | 198 | 202 |
| 65 | 95.3 | 113 | 132 | 154 | 177 | 195 | 202 | 193 | 171 | 146 | 124 | 103 | 90.5 | 110 | 135 | 163 | 194 | 217 | 225 |
| 70 | 92.8 | 112 | 134 | 162 | 196 | 223 | 232 | 218 | 187 | 153 | 124 | 101 | 87.0 | 109 | 136 | 171 | 211 | 241 | 251 |
| 75 | 86.9 | 108 | 136 | 173 | 217 | 251 | 263 | 245 | 204 | 159 | 123 | 96.4 | 81.2 | 104 | 136 | 176 | 222 | 256 | 266 |
| 80 | 77.7 | 101 | 134 | 177 | 226 | 264 | 277 | 257 | 213 | 162 | 120 | 88.9 | 72.1 | 97.1 | 131 | 175 | 223 | 258 | 268 |
| 85 | 65.2 | 91.0 | 126 | 172 | 223 | 261 | 274 | 255 | 210 | 156 | 111 | 77.8 | 59.8 | 85.9 | 121 | 166 | 214 | 249 | 260 |
| 90 | 54.8 | 82.2 | 119 | 166 | 216 | 253 | 266 | 247 | 203 | 149 | 103 | 68.2 | 48.6 | 75.9 | 112 | 157 | 206 | 240 | 251 |
| 95 | 61.2 | 88.3 | 124 | 172 | 224 | 262 | 275 | 255 | 210 | 155 | 109 | 74.1 | 54.6 | 81.5 | 117 | 163 | 212 | 249 | 260 |
| 100 | 68.6 | 90.7 | 127 | 174 | 227 | 266 | 278 | 259 | 213 | 159 | 113 | 78.4 | 62.3 | 85.6 | 119 | 164 | 212 | 249 | 259 |
| 105 | 73.3 | 90.2 | 124 | 169 | 219 | 258 | 270 | 251 | 207 | 156 | 112 | 79.2 | 68.5 | 86.0 | 117 | 157 | 200 | 234 | 243 |
| 110 | 78.3 | 89.2 | 121 | 160 | 203 | 237 | 249 | 232 | 193 | 150 | 111 | 79.6 | 74.8 | 86.3 | 115 | 147 | 181 | 206 | 214 |
| 115 | 85.2 | 89.5 | 118 | 151 | 184 | 210 | 220 | 208 | 177 | 143 | 110 | 85.7 | 82.5 | 87.8 | 113 | 140 | 166 | 184 | 190 |
| 120 | 92.2 | 95.5 | 116 | 143 | 170 | 189 | 196 | 187 | 165 | 137 | 109 | 92.9 | 90.4 | 91.1 | 113 | 136 | 157 | 171 | 175 |
| 125 | 98.5 | 99.8 | 114 | 138 | 160 | 175 | 181 | 173 | 156 | 132 | 108 | 98.4 | 97.2 | 98.1 | 112 | 133 | 151 | 163 | 166 |
| 130 | 103 | 103 | 112 | 132 | 151 | 165 | 169 | 163 | 148 | 127 | 110 | 103 | 103 | 103 | 111 | 129 | 145 | 156 | 159 |
| 135 | 106 | 105 | 115 | 126 | 142 | 154 | 158 | 152 | 139 | 122 | 113 | 106 | 106 | 106 | 110 | 125 | 139 | 149 | 151 |
| 140 | 108 | 106 | 115 | 121 | 133 | 143 | 146 | 142 | 130 | 120 | 113 | 108 | 108 | 106 | 113 | 118 | 131 | 140 | 142 |
| 145 | 109 | 107 | 114 | 122 | 126 | 132 | 134 | 131 | 125 | 120 | 113 | 108 | 108 | 106 | 113 | 117 | 123 | 130 | 132 |
| 150 | 109 | 106 | 113 | 120 | 126 | 128 | 128 | 127 | 124 | 118 | 110 | 107 | 109 | 105 | 109 | 118 | 120 | 121 | 121 |
| 155 | 110 | 106 | 111 | 117 | 122 | 125 | 125 | 125 | 121 | 114 | 109 | 107 | 109 | 106 | 106 | 114 | 119 | 121 | 121 |
| 160 | 110 | 103 | 109 | 114 | 117 | 120 | 120 | 119 | 112 | 111 | 109 | 105 | 109 | 107 | 104 | 106 | 113 | 116 | 117 |
| 165 | 104 | 98.1 | 106 | 110 | 113 | 115 | 115 | 112 | 111 | 109 | 105 | 100 | 105 | 105 | 101 | 103 | 105 | 110 | 111 |
| 170 | 84.9 | 89.7 | 92.6 | 101 | 108 | 108 | 108 | 108 | 102 | 94.5 | 86.8 | 85.7 | 86.7 | 86.9 | 87.9 | 88.5 | 94.5 | 103 | 105 |
| 175 | 62.4 | 62.6 | 67.3 | 81.1 | 83.0 | 84.4 | 83.5 | 77.4 | 70.5 | 65.2 | 63.4 | 63.5 | 64.8 | 65.0 | 64.5 | 65.0 | 67.5 | 75.3 | 80.5 |
| 180 | 68.1 | 65.6 | 58.6 | 59.1 | 37.1 | 25.8 | 0.00 | 35.6 | 46.9 | 55.2 | 63.3 | 66.8 | 67.6 | 67.4 | 65.3 | 61.5 | 55.4 | 48.9 | 29.0 |

C Range: 0 - 360DEG
 C Interval: 15.0DEG
 Test Speed: HIGH
 Temperature: 25.0DEG
 Operators: Alan Wang
 Test Date: 08 May 2023

γ Range: 0 - 180DEG
 γ Interval: 1.0DEG
 Test System: EVERFINE GO-R5000_V2 SYSTEM V2.00.416
 Humidity: 43.5%
 Test Distance: 2.500m [K=1.0390]
 Remarks:

LUMINOUS DISTRIBUTION INTENSITY DATA

| | | |
|--|----------|------------------|
| Test:U:277.00V I:0.1060A P:26.130W PF:0.8898 Freq:60.00Hz Lamp Flux:1810.35x1 lm | | |
| NAME: | TYPE:LED | WEIGHT: |
| SPEC.: | DIM.: | SERIAL No.: |
| MFR.: ASD Lighting corp | SUR.: | Shielding Angle: |

Table--2

UNIT: cd

| C(DEG) γ (DEG) | 285 | 300 | 315 | 330 | 345 | | | | | | | | | | | | | | |
|--------------------|------|------|-------|-------|------|--|--|--|--|--|--|--|--|--|--|--|--|--|--|
| 0 | 100 | 100 | 100.0 | 100.0 | 100 | | | | | | | | | | | | | | |
| 5 | 103 | 102 | 101 | 100 | 100 | | | | | | | | | | | | | | |
| 10 | 110 | 108 | 106 | 103 | 101 | | | | | | | | | | | | | | |
| 15 | 119 | 115 | 112 | 107 | 103 | | | | | | | | | | | | | | |
| 20 | 127 | 123 | 118 | 112 | 105 | | | | | | | | | | | | | | |
| 25 | 137 | 131 | 125 | 116 | 107 | | | | | | | | | | | | | | |
| 30 | 145 | 139 | 131 | 120 | 110 | | | | | | | | | | | | | | |
| 35 | 154 | 147 | 137 | 124 | 111 | | | | | | | | | | | | | | |
| 40 | 162 | 154 | 142 | 127 | 112 | | | | | | | | | | | | | | |
| 45 | 169 | 159 | 145 | 129 | 112 | | | | | | | | | | | | | | |
| 50 | 175 | 164 | 148 | 130 | 112 | | | | | | | | | | | | | | |
| 55 | 182 | 168 | 150 | 130 | 110 | | | | | | | | | | | | | | |
| 60 | 194 | 175 | 152 | 129 | 109 | | | | | | | | | | | | | | |
| 65 | 213 | 187 | 156 | 130 | 108 | | | | | | | | | | | | | | |
| 70 | 235 | 201 | 163 | 131 | 107 | | | | | | | | | | | | | | |
| 75 | 250 | 211 | 167 | 130 | 102 | | | | | | | | | | | | | | |
| 80 | 251 | 211 | 164 | 124 | 94.4 | | | | | | | | | | | | | | |
| 85 | 243 | 203 | 155 | 114 | 82.7 | | | | | | | | | | | | | | |
| 90 | 234 | 194 | 147 | 105 | 72.9 | | | | | | | | | | | | | | |
| 95 | 242 | 200 | 152 | 110 | 78.4 | | | | | | | | | | | | | | |
| 100 | 241 | 199 | 152 | 112 | 81.7 | | | | | | | | | | | | | | |
| 105 | 225 | 187 | 144 | 109 | 81.3 | | | | | | | | | | | | | | |
| 110 | 199 | 169 | 136 | 106 | 80.6 | | | | | | | | | | | | | | |
| 115 | 179 | 157 | 131 | 106 | 85.0 | | | | | | | | | | | | | | |
| 120 | 167 | 150 | 128 | 106 | 91.7 | | | | | | | | | | | | | | |
| 125 | 159 | 145 | 126 | 105 | 95.3 | | | | | | | | | | | | | | |
| 130 | 153 | 140 | 123 | 105 | 96.1 | | | | | | | | | | | | | | |
| 135 | 146 | 134 | 119 | 109 | 99.5 | | | | | | | | | | | | | | |
| 140 | 137 | 127 | 114 | 111 | 99.5 | | | | | | | | | | | | | | |
| 145 | 128 | 120 | 116 | 109 | 99.7 | | | | | | | | | | | | | | |
| 150 | 121 | 120 | 116 | 104 | 101 | | | | | | | | | | | | | | |
| 155 | 121 | 119 | 114 | 104 | 102 | | | | | | | | | | | | | | |
| 160 | 116 | 114 | 108 | 104 | 103 | | | | | | | | | | | | | | |
| 165 | 110 | 109 | 106 | 103 | 99.4 | | | | | | | | | | | | | | |
| 170 | 105 | 105 | 103 | 96.1 | 94.4 | | | | | | | | | | | | | | |
| 175 | 83.6 | 87.9 | 84.2 | 82.1 | 64.7 | | | | | | | | | | | | | | |
| 180 | 25.8 | 33.0 | 52.9 | 58.9 | 61.9 | | | | | | | | | | | | | | |

C Range: 0 - 360DEG
 C Interval: 15.0DEG
 Test Speed: HIGH
 Temperature: 25.0DEG
 Operators: Alan Wang
 Test Date: 08 May 2023

γ Range: 0 - 180DEG
 γ Interval: 1.0DEG
 Test System: EVERFINE GO-R5000_V2 SYSTEM V2.00.416
 Humidity: 43.5%
 Test Distance: 2.500m [K=1.0390]
 Remarks: