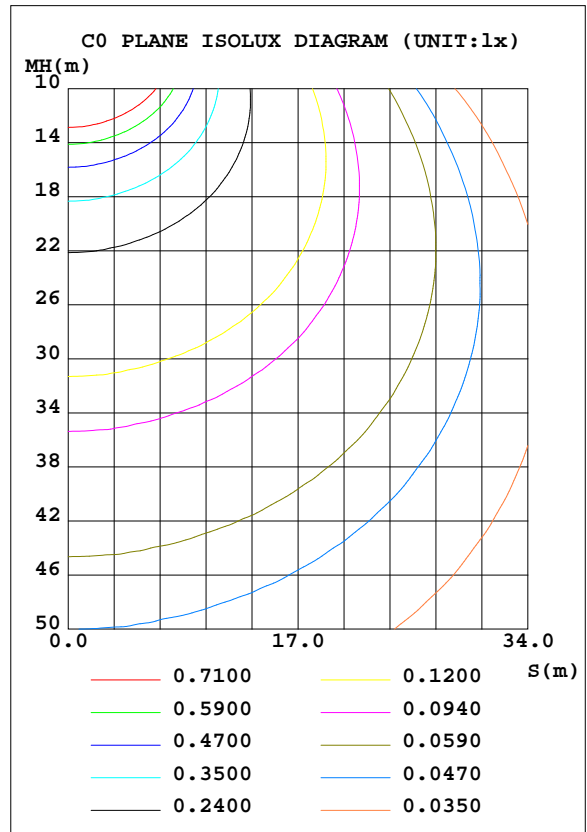
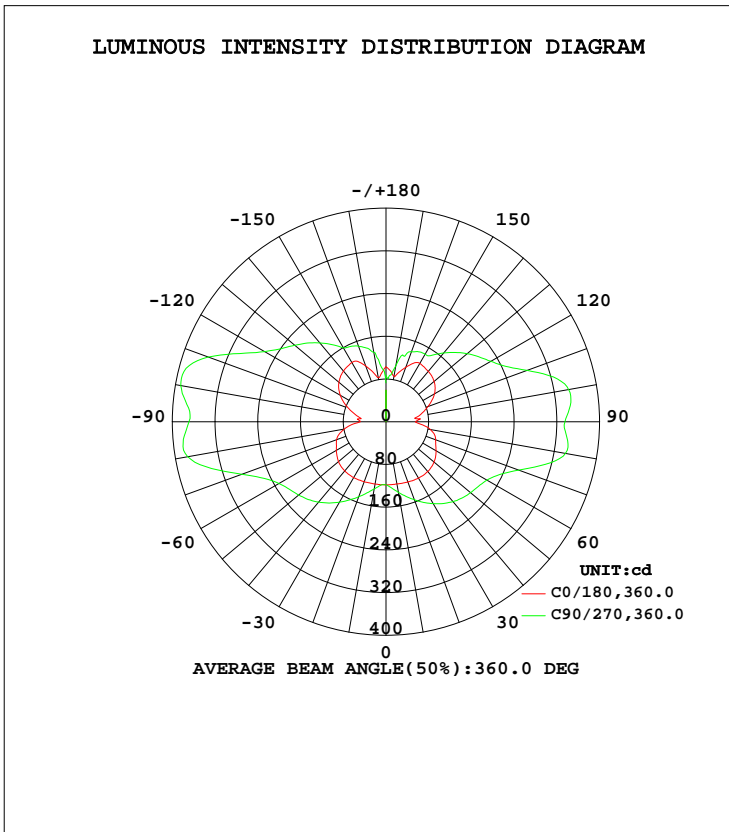


LUMINAIRE PHOTOMETRIC TEST REPORT

Test:U:120.0V I:0.2459A P:28.93W PF:0.9801 Lamp Flux:2226.17x1 lm		
NAME: ASD-LWS27-36D30CC 3000K	TYPE:N/A	WEIGHT:N/A
SPEC.:N/A	DIM.: N/A	SERIAL No.:N/A
MFR.: ASD Lighting corp	SUR.:N/A	Shielding Angle:N/A

DATA OF LAMP		PHOTOMETRIC DATA Eff: 76.95 lm/W			
MODEL	PSZ2S220624003-10	I <sub>max</sub> (cd)	391.6	S/MH(C0/180)	1.58
NOMINAL POWER(W)		LOR(%)	100.0	S/MH(C90/270)	2.28
RATED VOLTAGE(V)	120	TOTAL FLUX(lm)	2226.2	η UP, DN(C0-180)	25.9,25.9
NOMINAL FLUX(lm)	2226.17	CIE CLASS	DIFFUSE	η UP, DN(C180-360)	23.3,24.8
LAMPS INSIDE	1	η up(%)	49.3	CIBSE SHR NOM	2.00
TEST VOLTAGE(V)	120	η down(%)	50.7	CIBSE SHR MAX	0.00



C Range: 0 - 360DEG  
 C Interval: 22.5DEG  
 Test Speed: HIGH  
 Temperature:25.8DEG  
 Operators:Carl  
 Test Date:2022-06-24

γ Range: 0 - 180DEG  
 γ Interval: 1.0DEG  
 Test System:EVERFINE GO-R5000\_V2 SYSTEM V2.0.351  
 Humidity:42%  
 Test Distance:2.526m [K=1.0000]  
 Remarks:

ZONAL FLUX DIAGRAM

ZONAL FLUX DIAGRAM:

γ	C0	C45	C90	C135	C180	C225	C270	C315	γ	Φ zone	Φ total	%lum,lamp
10	118.5	122.8	127.9	122.9	118.3	128.2	134.3	128.4	0- 10	11.64	11.64	0.52,0.52
20	119.5	136.4	149.5	136.8	120.1	142.5	155.6	142.7	10- 20	37.43	49.07	2.2,2.2
30	120.9	152.6	174.0	154.1	121.9	157.4	177.1	157.9	20- 30	67.46	116.5	5.23,5.23
40	120.2	167.0	196.6	169.5	121.9	169.6	195.3	169.9	30- 40	99.87	216.4	9.72,9.72
50	116.2	176.4	213.7	180.2	117.5	175.3	206.5	176.1	40- 50	130.5	346.9	15.6,15.6
60	107.3	179.8	231.5	184.8	108.4	174.4	218.5	176.6	50- 60	155.0	501.9	22.5,22.5
70	98.70	189.4	287.8	197.1	99.08	177.2	264.7	183.6	60- 70	178.3	680.3	30.6,30.6
80	79.12	214.8	377.2	228.8	84.30	195.6	341.1	202.9	70- 80	216.9	897.2	40.3,40.3
90	48.42	205.5	369.0	222.2	55.38	190.5	335.0	194.0	80- 90	231.9	1129	50.7,50.7
100	51.58	216.7	390.1	235.8	62.39	199.6	347.2	198.3	90-100	230.3	1359	61.1,61.1
110	75.35	199.1	354.7	211.1	83.69	178.2	281.7	175.0	100-110	221.0	1580	71,71
120	98.75	175.0	262.8	184.6	104.8	162.6	226.7	160.2	110-120	180.0	1760	79.1,79.1
130	115.2	163.0	223.0	170.7	117.7	149.9	198.5	148.3	120-130	148.0	1908	85.7,85.7
140	124.3	147.7	193.2	153.5	123.5	139.1	168.4	136.7	130-140	120.0	2028	91.1,91.1
150	128.2	146.8	159.9	149.5	126.5	135.5	146.6	139.5	140-150	90.64	2119	95.2,95.2
160	111.2	139.7	150.8	139.4	108.7	113.3	139.8	136.5	150-160	63.33	2182	98,98
170	84.22	122.7	132.1	96.86	87.01	91.32	106.3	123.7	160-170	34.13	2217	99.6,99.6
180	103.4	98.05	73.03	93.94	102.0	99.47	87.75	83.18	170-180	9.639	2226	100,100
DEG	LUMINOUS INTENSITY:cd									UNIT:lm		

Conical surface Flux(90deg): 278.15 lm

%lum = 12.5%  
 %lamp = 12.5%

Conical surface Flux(120deg): 501.95 lm

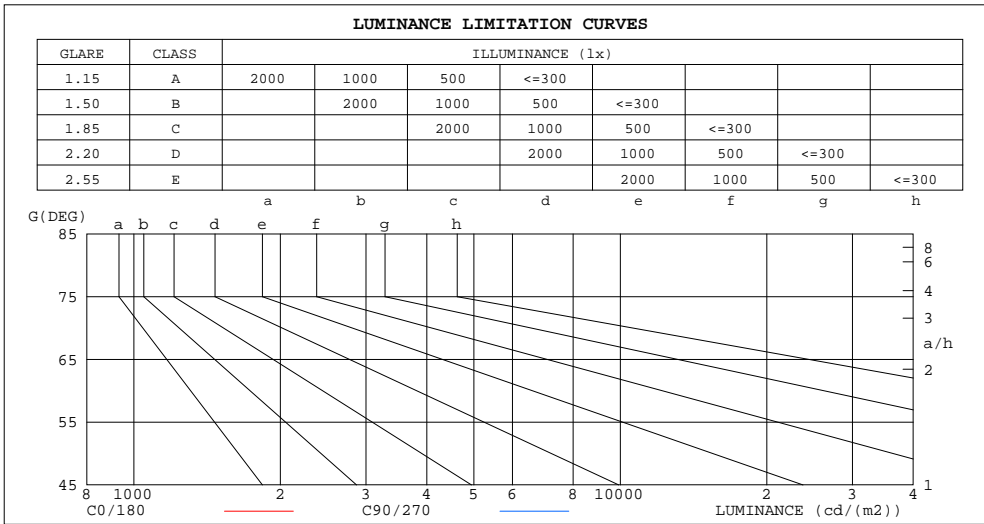
%lum = 22.5%  
 %lamp = 22.5%

C Range: 0 - 360DEG  
 C Interval: 22.5DEG  
 Test Speed: HIGH  
 Temperature:25.8DEG  
 Operators:Carl  
 Test Date:2022-06-24

γ Range: 0 - 180DEG  
 γ Interval: 1.0DEG  
 Test System:EVERFINE GO-R5000\_V2 SYSTEM V2.0.351  
 Humidity:42%  
 Test Distance:2.526m [K=1.0000]  
 Remarks:

LUMINANCE LIMITATION CURVES

Test:U:120.0V I:0.2459A P:28.93W PF:0.9801 Lamp Flux:2226.17x1 lm		
NAME: ASD-LWS27-36D30CC 3000K	TYPE:N/A	WEIGHT:N/A
SPEC.:N/A	DIM.: N/A	SERIAL No.:N/A
MFR.: ASD Lighting corp	SUR.:N/A	Shielding Angle:N/A



LUMINANCE cd/(m2)		
G (DEG)	C0/180	C90/270
85	360089	2125429
80	220355	1056386
75	170338	635421
70	139569	409268
65	117476	289410
60	103826	225144
55	94574	187290
50	87465	161689
45	81216	141751

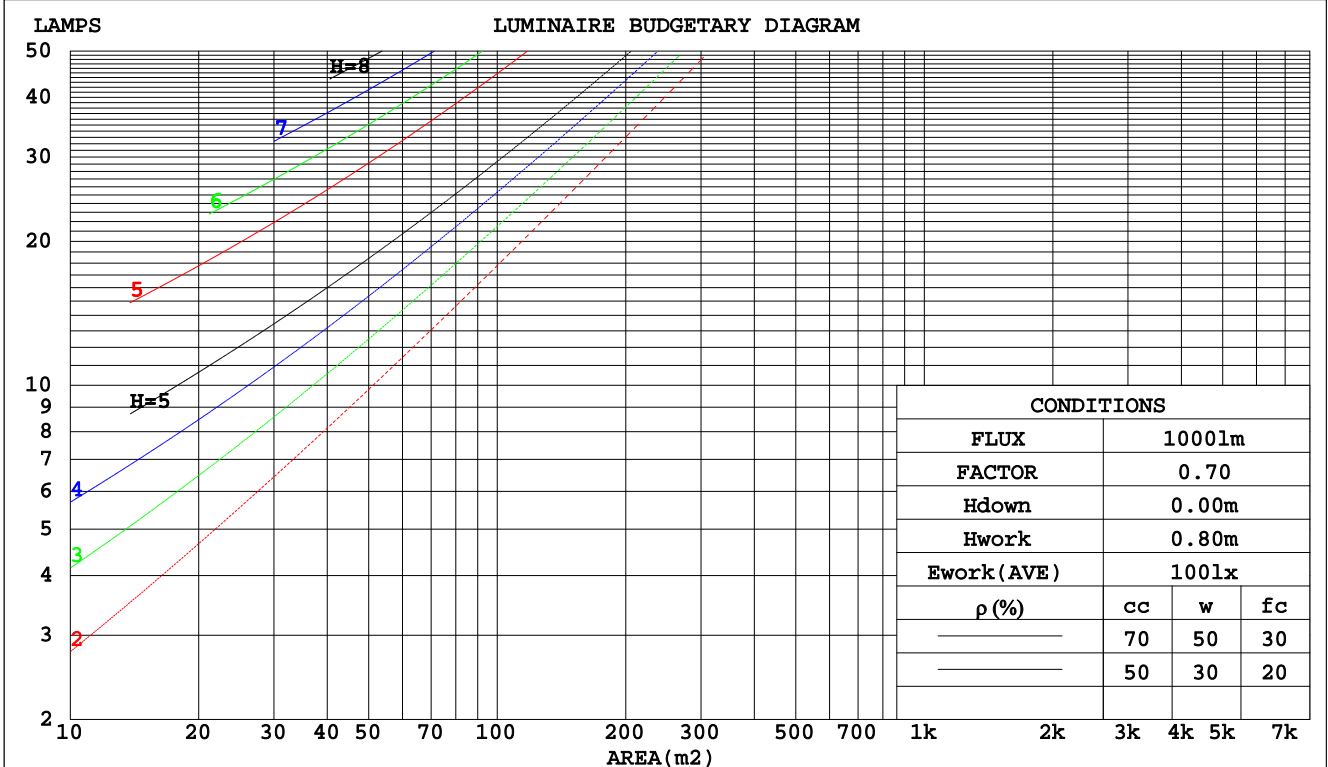
C Range: 0 - 360DEG  
 C Interval: 22.5DEG  
 Test Speed: HIGH  
 Temperature:25.8DEG  
 Operators:Carl  
 Test Date:2022-06-24

$\gamma$  Range: 0 - 180DEG  
 $\gamma$  Interval: 1.0DEG  
 Test System:EVERFINE GO-R5000\_V2 SYSTEM V2.0.351  
 Humidity:42%  
 Test Distance:2.526m [K=1.0000]  
 Remarks:

CU AND LUMINAIRE BUDGETARY ESTIMATE DIAGRAM

Test:U:120.0V I:0.2459A P:28.93W PF:0.9801 Lamp Flux:2226.17x1 lm		
NAME: ASD-LWS27-36D30CC 3000K	TYPE:N/A	WEIGHT:N/A
SPEC.:N/A	DIM.: N/A	SERIAL No.:N/A
MFR.: ASD Lighting corp	SUR.:N/A	Shielding Angle:N/A

pcc	80%			70%			50%			30%			10%			0
	50%	30%	10%	50%	30%	10%	50%	30%	10%	50%	30%	10%	50%	30%	10%	0
pw																0
pfc	20%			20%			20%			20%			20%			0
RCR	RCR:Room Cavity Ratio						Coefficients of Utilization(CU)									
0.0	1.07	1.07	1.07	.99	.99	.99	.84	.84	.84	.70	.70	.70	.57	.57	.57	.51
1.0	.86	.80	.75	.79	.74	.69	.66	.62	.58	.53	.50	.48	.42	.40	.38	.32
2.0	.73	.65	.58	.67	.59	.53	.55	.49	.44	.44	.40	.36	.34	.31	.28	.23
3.0	.62	.53	.46	.57	.49	.42	.47	.41	.35	.38	.33	.29	.29	.25	.22	.18
4.0	.54	.45	.38	.50	.41	.35	.41	.34	.29	.33	.28	.23	.25	.21	.18	.14
5.0	.48	.38	.31	.44	.35	.29	.36	.29	.24	.29	.24	.19	.22	.18	.15	.11
6.0	.43	.33	.27	.39	.31	.25	.32	.25	.21	.26	.21	.17	.20	.16	.13	.09
7.0	.38	.29	.23	.35	.27	.21	.29	.22	.18	.23	.18	.14	.18	.14	.11	.08
8.0	.34	.26	.20	.32	.24	.18	.26	.20	.15	.21	.16	.12	.16	.12	.09	.07
9.0	.31	.23	.17	.29	.21	.16	.24	.18	.13	.19	.14	.11	.15	.11	.08	.06
10.0	.28	.21	.15	.26	.19	.14	.22	.16	.12	.18	.13	.10	.14	.10	.07	.05



C Range: 0 - 360DEG  
 C Interval: 22.5DEG  
 Test Speed: HIGH  
 Temperature:25.8DEG  
 Operators:Carl  
 Test Date:2022-06-24

γ Range: 0 - 180DEG  
 γ Interval: 1.0DEG  
 Test System:EVERFINE GO-R5000\_V2 SYSTEM V2.0.351  
 Humidity:42%  
 Test Distance:2.526m [K=1.0000]  
 Remarks:

WEC AND CCEC

Test:U:120.0V I:0.2459A P:28.93W PF:0.9801 Lamp Flux:2226.17x1 lm		
NAME: ASD-LWS27-36D30CC 3000K	TYPE:N/A	WEIGHT:N/A
SPEC.:N/A	DIM.: N/A	SERIAL No.:N/A
MFR.: ASD Lighting corp	SUR.:N/A	Shielding Angle:N/A

ρcc	80%			70%			50%			30%			10%			0
ρw	50%	30%	10%	50%	30%	10%	50%	30%	10%	50%	30%	10%	50%	30%	10%	0
ρfc	20%			20%			20%			20%			20%			0
RCR	RCR:Room Cavity Ratio						Wall Exitance Coefficients(WEC)									
0.0																
1.0	.420	.239	.076	.398	.227	.072	.356	.204	.065	.318	.183	.059	.283	.164	.053	
2.0	.348	.191	.058	.327	.180	.056	.289	.161	.050	.254	.143	.045	.222	.125	.040	
3.0	.302	.161	.048	.283	.152	.046	.248	.135	.041	.216	.118	.036	.186	.103	.032	
4.0	.268	.139	.041	.251	.131	.039	.219	.116	.035	.189	.102	.031	.162	.088	.027	
5.0	.241	.123	.036	.226	.116	.034	.196	.102	.030	.169	.089	.027	.143	.077	.023	
6.0	.220	.110	.031	.205	.104	.030	.178	.091	.027	.153	.079	.023	.129	.068	.020	
7.0	.201	.100	.028	.188	.094	.027	.163	.082	.024	.140	.072	.021	.118	.061	.018	
8.0	.186	.091	.026	.174	.086	.024	.151	.075	.021	.129	.065	.019	.108	.055	.016	
9.0	.173	.084	.023	.162	.079	.022	.140	.069	.020	.119	.060	.017	.100	.051	.015	
10.0	.161	.077	.021	.151	.073	.020	.131	.064	.018	.111	.055	.016	.093	.047	.013	

ρcc	80%			70%			50%			30%			10%			0
ρw	50%	30%	10%	50%	30%	10%	50%	30%	10%	50%	30%	10%	50%	30%	10%	0
ρfc	20%			20%			20%			20%			20%			0
RCR	RCR:Room Cavity Ratio						Ceiling Cavity Exitance Coefficients(CCEC)									
0.0	.566	.566	.566	.484	.484	.484	.330	.330	.330	.190	.190	.190	.061	.061	.061	
1.0	.567	.534	.504	.485	.458	.434	.332	.315	.300	.191	.182	.175	.061	.059	.056	
2.0	.561	.513	.472	.480	.441	.408	.329	.305	.285	.190	.178	.167	.061	.057	.054	
3.0	.554	.498	.453	.475	.429	.393	.326	.298	.275	.188	.174	.162	.060	.057	.053	
4.0	.546	.486	.440	.469	.420	.383	.322	.293	.269	.186	.172	.159	.060	.056	.052	
5.0	.539	.477	.432	.463	.413	.376	.319	.288	.265	.185	.169	.157	.060	.055	.052	
6.0	.532	.470	.426	.457	.407	.371	.315	.285	.262	.183	.168	.156	.059	.055	.051	
7.0	.525	.464	.421	.451	.402	.367	.312	.282	.260	.181	.166	.155	.059	.054	.051	
8.0	.518	.459	.418	.446	.398	.364	.309	.279	.258	.180	.165	.154	.058	.054	.051	
9.0	.512	.454	.415	.441	.394	.362	.306	.277	.257	.178	.164	.153	.058	.054	.051	
10.0	.506	.450	.413	.437	.391	.360	.303	.275	.256	.177	.163	.153	.057	.053	.051	

C Range: 0 - 360DEG  
 C Interval: 22.5DEG  
 Test Speed: HIGH  
 Temperature:25.8DEG  
 Operators:Carl  
 Test Date:2022-06-24

γ Range: 0 - 180DEG  
 γ Interval: 1.0DEG  
 Test System:EVERFINE GO-R5000\_V2 SYSTEM V2.0.351  
 Humidity:42%  
 Test Distance:2.526m [K=1.0000]  
 Remarks:

UGR(Unified Glare Rating) Table

Test:U:120.0V I:0.2459A P:28.93W PF:0.9801 Lamp Flux:2226.17x1 lm										
NAME: ASD-LWS27-36D30CC 3000K					TYPE:N/A			WEIGHT:N/A		
SPEC.:N/A					DIM.: N/A			SERIAL No.:N/A		
MFR.: ASD Lighting corp					SUR.:N/A			Shielding Angle:N/A		
ceiling/cavity	0.7	0.7	0.5	0.5	0.3	0.7	0.7	0.5	0.5	0.3
walls	0.5	0.3	0.5	0.3	0.3	0.5	0.3	0.5	0.3	0.3
working plane	0.2	0.2	0.2	0.2	0.2	0.2	0.2	0.2	0.2	0.2
Room dimensions	Viewed crosswise					Viewed endwise				
x = 2H y = 2H	25.1	26.2	26.0	27.1	28.3	28.3	29.4	29.2	30.3	31.4
3H	27.7	28.7	28.6	29.6	30.8	32.5	33.5	33.3	34.4	35.5
4H	29.1	30.0	30.0	30.9	32.1	35.1	36.0	36.0	37.0	38.1
6H	30.5	31.3	31.4	32.3	33.5	38.0	38.9	38.9	39.8	41.1
8H	31.2	32.0	32.1	33.0	34.2	39.5	40.4	40.4	41.3	42.5
12H	31.9	32.7	32.8	33.7	34.9	41.1	41.9	42.0	42.9	44.1
4H 2H	26.9	27.9	27.8	28.8	30.0	29.0	29.9	29.9	30.8	32.0
3H	29.6	30.4	30.5	31.4	32.6	33.3	34.1	34.2	35.1	36.3
4H	31.1	31.8	32.0	32.8	34.1	36.1	36.9	37.1	37.8	39.1
6H	32.6	33.2	33.5	34.2	35.5	39.2	39.9	40.2	40.9	42.2
8H	33.3	33.9	34.3	34.9	36.2	40.9	41.5	41.8	42.5	43.8
12H	34.1	34.6	35.0	35.6	37.0	42.6	43.1	43.5	44.1	45.4
8H 4H	32.9	33.5	33.8	34.5	35.8	36.5	37.1	37.5	38.1	39.4
6H	34.6	35.2	35.6	36.2	37.5	39.9	40.5	40.9	41.5	42.8
8H	35.5	36.0	36.5	37.0	38.3	41.8	42.2	42.8	43.3	44.6
12H	36.4	36.8	37.4	37.8	39.2	43.7	44.2	44.7	45.2	46.5
12H 4H	33.7	34.2	34.6	35.2	36.5	36.5	37.1	37.5	38.1	39.4
6H	35.6	36.1	36.6	37.1	38.4	40.0	40.5	41.0	41.5	42.9
8H	36.6	37.0	37.6	38.1	39.4	42.0	42.4	43.0	43.4	44.8
Variations with the observer position at spacings:										
S = 1.0H	+ 0.1 / - 0.1					+ 0.1 / - 0.1				
1.5H	+ 0.2 / - 0.2					+ 0.2 / - 0.3				
2.0H	+ 0.3 / - 0.4					+ 0.3 / - 0.4				

CIE Pub.117 Corrected 2226 lm Total Lamp Luminous Flux.(8log(F/F0) = 2.8)

C Range: 0 - 360DEG  
 C Interval: 22.5DEG  
 Test Speed: HIGH  
 Temperature:25.8DEG  
 Operators:Carl  
 Test Date:2022-06-24

γ Range: 0 - 180DEG  
 γ Interval: 1.0DEG  
 Test System:EVERFINE GO-R5000\_V2 SYSTEM V2.0.351  
 Humidity:42%  
 Test Distance:2.526m [K=1.0000]  
 Remarks:

UTILIZATION FACTORS TABLE

Test:U:120.0V I:0.2459A P:28.93W PF:0.9801 Lamp Flux:2226.17x1 lm		
NAME: ASD-LWS27-36D30CC 3000K	TYPE:N/A	WEIGHT:N/A
SPEC.:N/A	DIM.: N/A	SERIAL No.:N/A
MFR.: ASD Lighting corp	SUR.:N/A	Shielding Angle:N/A

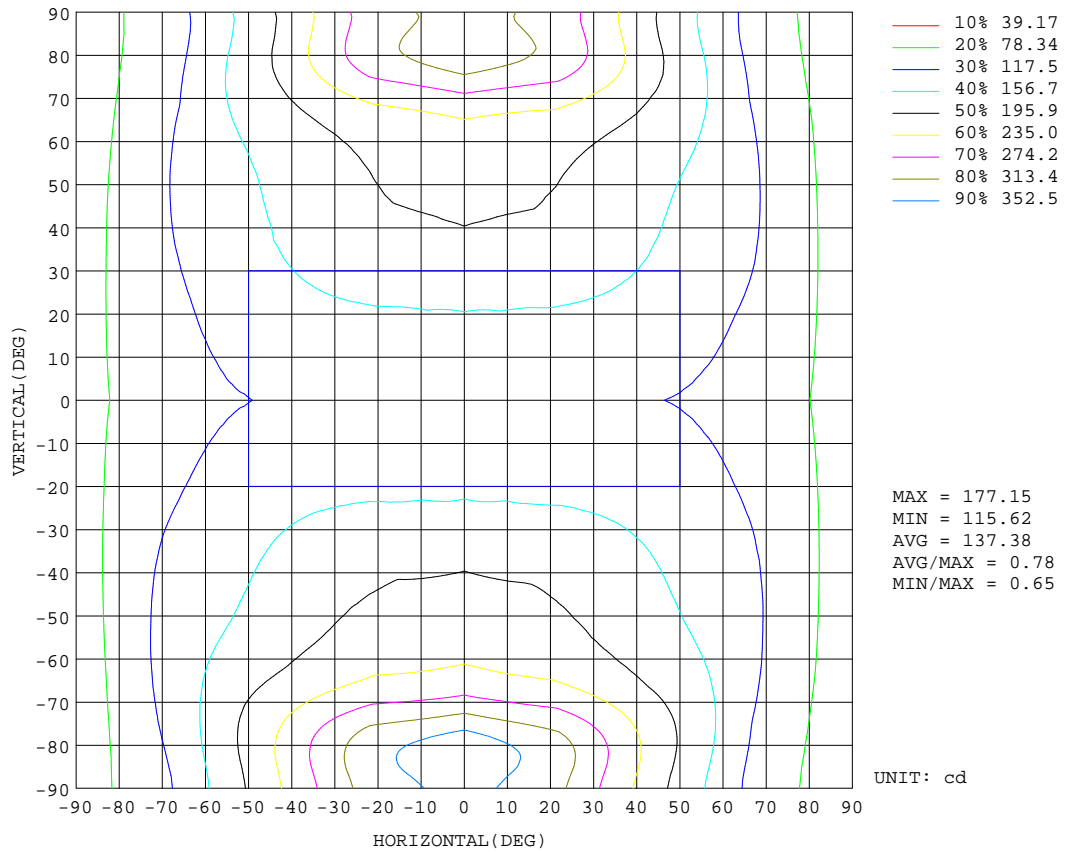
REFLECTANCE										
Ceiling	0.8	0.8	0.8	0.7	0.7	0.7	0.5	0.5	0.5	0
Walls	0.7	0.5	0.3	0.7	0.5	0.3	0.7	0.5	0.3	0
Working plane	0.2	0.2	0.2	0.2	0.2	0.2	0.2	0.2	0.2	0
ROOM INDEX	UTILIZATION FACTORS(PERCENT) $k(RI) \times RCR = 5$									
k = 0.60	36	23	16	34	22	15	30	20	14	7
0.80	44	30	22	42	29	21	37	26	19	10
1.00	51	37	28	48	35	27	42	33	24	12
1.25	58	44	34	54	41	32	47	36	29	15
1.50	63	49	40	59	46	37	50	40	33	18
2.00	71	58	48	66	54	45	56	47	40	22
2.50	76	64	55	70	60	51	60	51	44	24
3.00	80	69	60	74	64	56	63	55	48	27
4.00	86	76	68	79	70	63	67	60	54	30
5.00	89	80	73	82	74	68	69	63	58	33
ROOM INDEX	UF(total)									Direct
According to DIN EN 13032-2 2004			Suspended				SHRNOM = 1.25			

C Range: 0 - 360DEG  
 C Interval: 22.5DEG  
 Test Speed: HIGH  
 Temperature:25.8DEG  
 Operators:Carl  
 Test Date:2022-06-24

$\gamma$  Range: 0 - 180DEG  
 $\gamma$  Interval: 1.0DEG  
 Test System:EVERFINE GO-R5000\_V2 SYSTEM V2.0.351  
 Humidity:42%  
 Test Distance:2.526m [K=1.0000]  
 Remarks:

**ISOCANDELA DIAGRAM**

Test:U:120.0V I:0.2459A P:28.93W PF:0.9801 Lamp Flux:2226.17x1 lm		
NAME: ASD-LWS27-36D30CC 3000K	TYPE:N/A	WEIGHT:N/A
SPEC.:N/A	DIM.: N/A	SERIAL No.:N/A
MFR.: ASD Lighting corp	SUR.:N/A	Shielding Angle:N/A



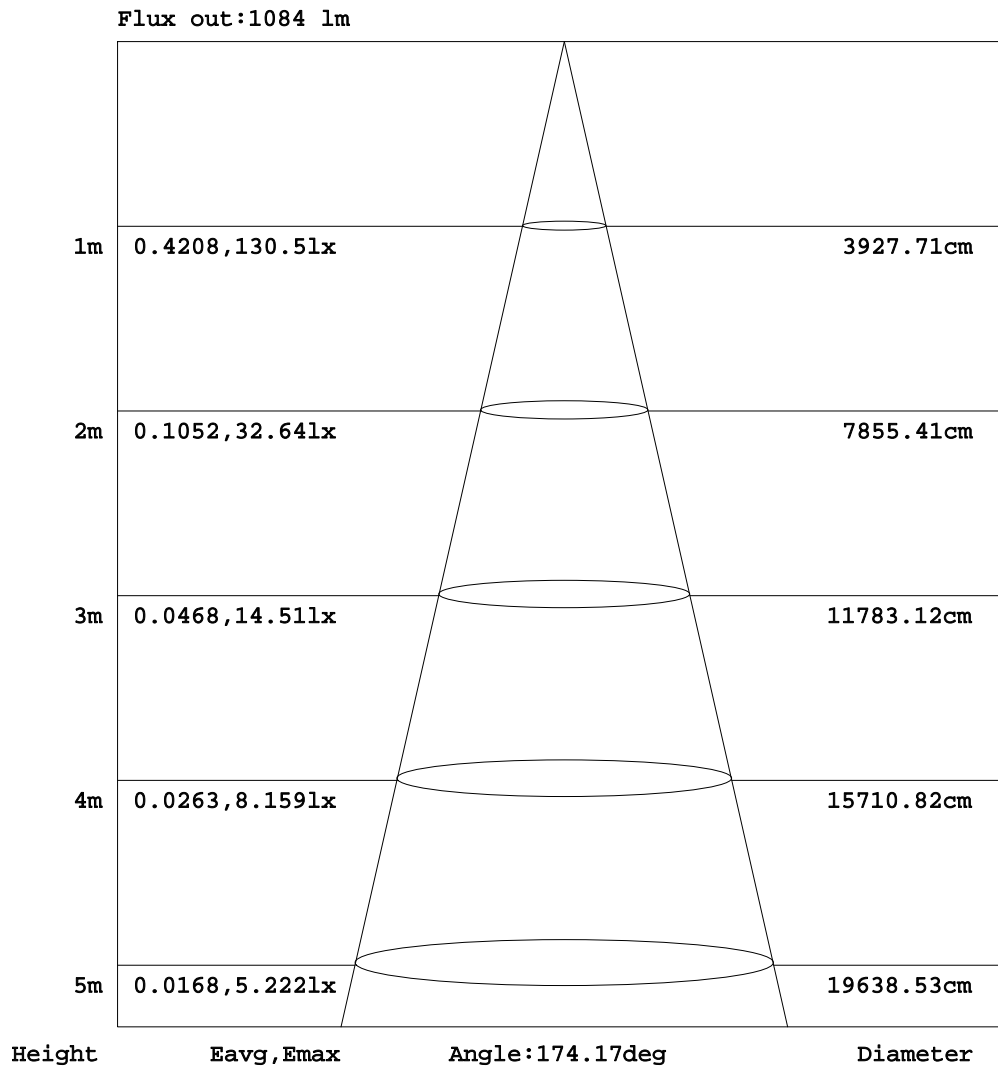
C Range: 0 - 360DEG  
 C Interval: 22.5DEG  
 Test Speed: HIGH  
 Temperature:25.8DEG  
 Operators:Carl  
 Test Date:2022-06-24

$\gamma$  Range: 0 - 180DEG  
 $\gamma$  Interval: 1.0DEG  
 Test System:EVERFINE GO-R5000\_V2 SYSTEM V2.0.351  
 Humidity:42%  
 Test Distance:2.526m [K=1.0000]  
 Remarks:



AAI Figure

Test:U:120.0V I:0.2459A P:28.93W PF:0.9801 Lamp Flux:2226.17x1 lm		
NAME: ASD-LWS27-36D30CC 3000K	TYPE:N/A	WEIGHT:N/A
SPEC.:N/A	DIM.: N/A	SERIAL No.:N/A
MFR.: ASD Lighting corp	SUR.:N/A	Shielding Angle:N/A



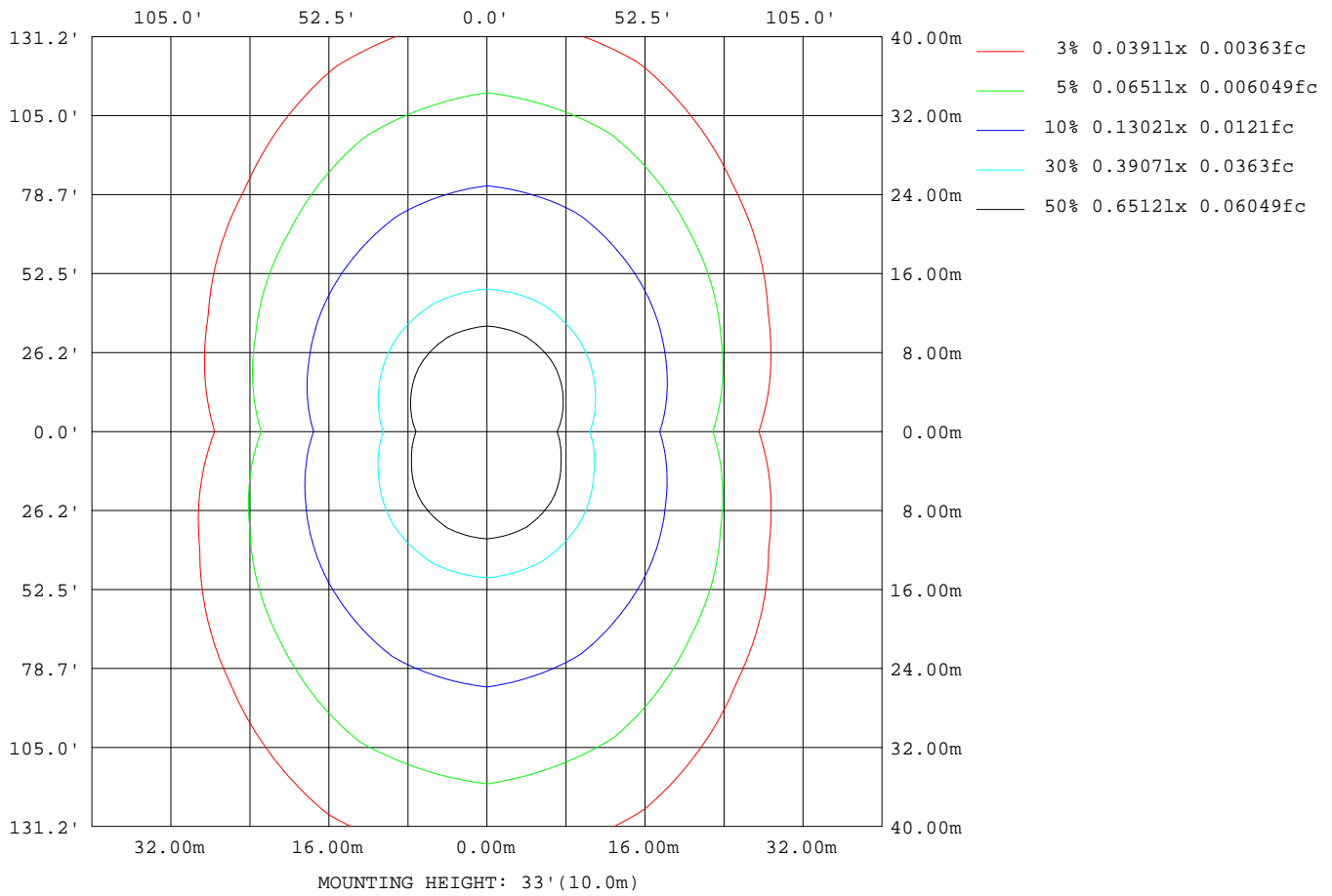
Note:The Curves indicate the illuminated area and the average illumination when the luminaire is at different distance.

C Range: 0 - 360DEG  
 C Interval: 22.5DEG  
 Test Speed: HIGH  
 Temperature:25.8DEG  
 Operators:Carl  
 Test Date:2022-06-24

γ Range: 0 - 180DEG  
 γ Interval: 1.0DEG  
 Test System:EVERFINE GO-R5000\_V2 SYSTEM V2.0.351  
 Humidity:42%  
 Test Distance:2.526m [K=1.0000]  
 Remarks:

ISOLUX DIAGRAM

Test:U:120.0V I:0.2459A P:28.93W PF:0.9801 Lamp Flux:2226.17x1 lm		
NAME: ASD-LWS27-36D30CC 3000K	TYPE:N/A	WEIGHT:N/A
SPEC.:N/A	DIM.: N/A	SERIAL No.:N/A
MFR.: ASD Lighting corp	SUR.:N/A	Shielding Angle:N/A



C Range: 0 - 360DEG  
 C Interval: 22.5DEG  
 Test Speed: HIGH  
 Temperature:25.8DEG  
 Operators:Carl  
 Test Date:2022-06-24

γ Range: 0 - 180DEG  
 γ Interval: 1.0DEG  
 Test System:EVERFINE GO-R5000\_V2 SYSTEM V2.0.351  
 Humidity:42%  
 Test Distance:2.526m [K=1.0000]  
 Remarks:

**LED Avg.L Report**

Test:U:120.0V I:0.2459A P:28.93W PF:0.9801 Lamp Flux:2226.17x1 lm		
NAME: ASD-LWS27-36D30CC 3000K	TYPE:N/A	WEIGHT:N/A
SPEC.:N/A	DIM.: N/A	SERIAL No.:N/A
MFR.: ASD Lighting corp	SUR.:N/A	Shielding Angle:N/A

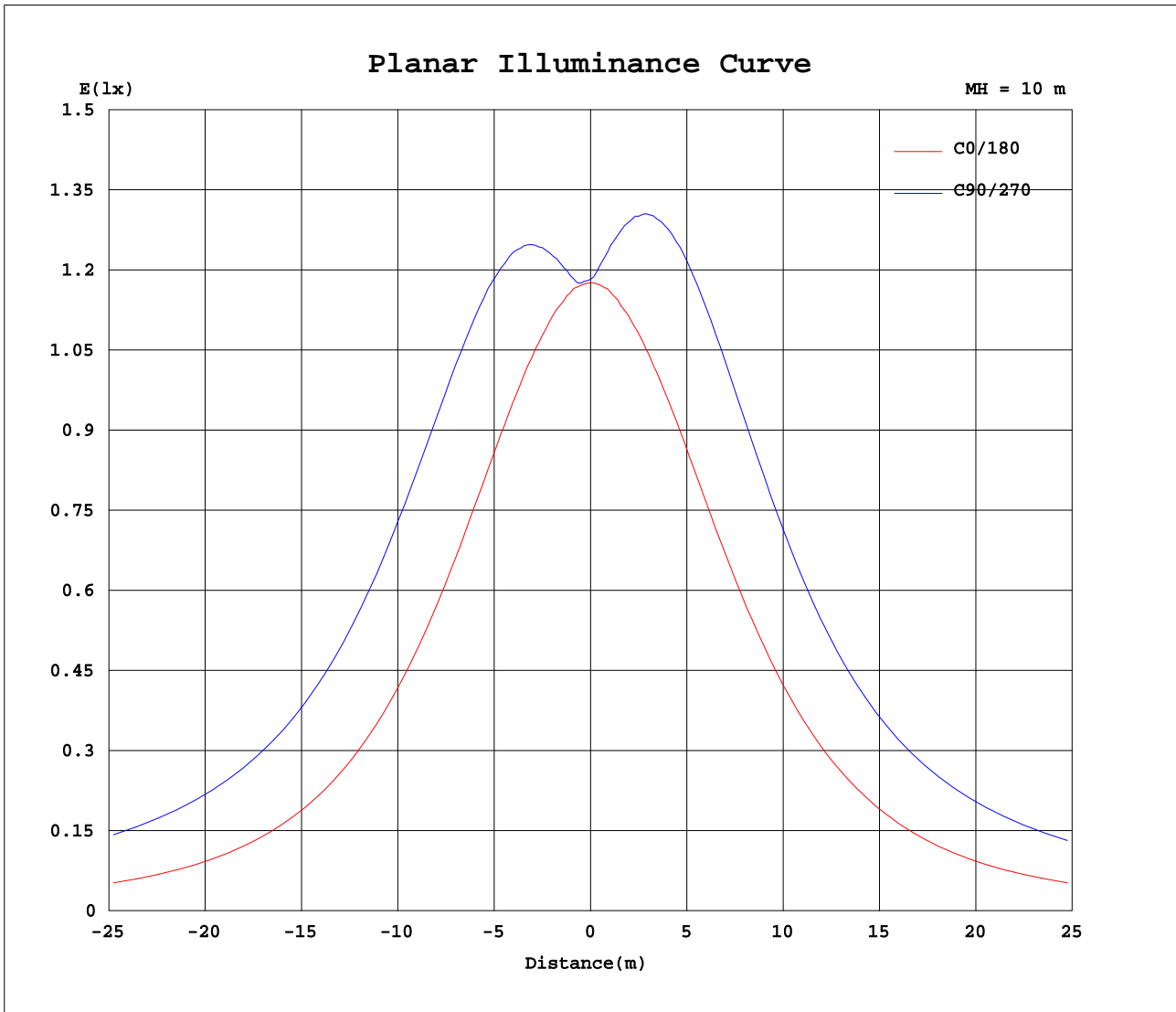
AvgL	cd/m2
L_0~180(65)av	118228
L_0~180(75)av	174034
L_0~180(85)av	374505
L_90~270(65)av	279574
L_90~270(75)av	607698
L_90~270(85)av	2011392
L_45(65)av	207958
L_45(75)av	373837
L_45(85)av	1166346

Standard: GB/T 29293-2012

C Range: 0 - 360DEG  
 C Interval: 22.5DEG  
 Test Speed: HIGH  
 Temperature:25.8DEG  
 Operators:Carl  
 Test Date:2022-06-24

γ Range: 0 - 180DEG  
 γ Interval: 1.0DEG  
 Test System:EVERFINE GO-R5000\_V2 SYSTEM V2.0.351  
 Humidity:42%  
 Test Distance:2.526m [K=1.0000]  
 Remarks:

Planar Illuminance Curve



C Range: 0 - 360DEG  
 C Interval: 22.5DEG  
 Test Speed: HIGH  
 Temperature: 25.8DEG  
 Operators: Carl  
 Test Date: 2022-06-24

$\gamma$  Range: 0 - 180DEG  
 $\gamma$  Interval: 1.0DEG  
 Test System: EVERFINE GO-R5000\_V2 SYSTEM V2.0.351  
 Humidity: 42%  
 Test Distance: 2.526m [K=1.0000]  
 Remarks:

LUMINOUS DISTRIBUTION INTENSITY DATA

Test:U:120.0V I:0.2459A P:28.93W PF:0.9801 Lamp Flux:2226.17x1 lm		
NAME: ASD-LWS27-36D30CC 3000K	TYPE:N/A	WEIGHT:N/A
SPEC.:N/A	DIM.: N/A	SERIAL No.:N/A
MFR.: ASD Lighting corp	SUR.:N/A	Shielding Angle:N/A

Table--1

UNIT: cd

C(DEG) γ (DEG)	0	22.5	45	67.5	90	112.5	135	157.5	180	202.5	225	247.5	270	292.5	315	337.5			
0	118	118	118	118	118	118	118	118	118	118	118	118	118	118	118	118			
5	119	118	119	119	120	119	118	118	118	119	122	124	125	124	122	120			
10	119	119	123	127	128	126	123	119	118	122	128	132	134	133	128	123			
15	119	121	129	135	138	135	129	122	119	126	135	142	145	142	135	126			
20	119	125	136	146	149	146	137	126	120	130	142	152	156	152	143	130			
25	120	129	144	157	162	157	145	130	121	134	150	162	167	162	150	134			
30	121	133	153	167	174	168	154	135	122	138	157	171	177	172	158	138			
35	121	136	160	178	186	179	162	139	122	141	164	180	187	181	165	142			
40	120	139	167	188	197	189	169	142	122	144	170	188	195	188	170	144			
45	119	141	173	196	206	198	176	145	120	145	173	193	202	194	174	145			
50	116	142	176	202	214	204	180	146	117	145	175	197	207	198	176	145			
55	112	141	179	208	221	210	183	146	114	143	176	200	211	202	177	143			
60	107	139	180	214	231	218	185	144	108	138	174	204	219	206	177	140			
65	103	136	183	228	251	233	189	141	103	134	174	214	234	218	178	137			
70	98.7	134	189	255	288	260	197	140	99.1	130	177	234	265	240	184	134			
75	91.2	131	202	292	338	301	213	140	94.1	127	186	268	309	273	194	130			
80	79.1	125	215	325	377	334	229	137	84.3	120	196	295	341	300	203	121			
85	64.9	114	215	330	381	339	230	128	69.4	109	193	296	340	299	198	109			
90	48.4	103	206	319	369	328	222	118	55.4	102	191	292	335	294	194	101			
95	53.9	109	210	323	374	335	228	125	64.9	111	199	302	346	304	201	107			
100	51.6	115	217	335	390	348	236	132	62.4	116	200	303	347	303	198	109			
105	62.8	113	213	331	388	343	228	129	72.7	112	190	283	325	281	187	108			
110	75.3	112	199	303	355	312	211	126	83.7	109	178	250	282	247	175	107			
115	87.7	114	184	262	303	270	195	125	94.8	110	169	224	247	221	166	108			
120	98.7	115	175	234	263	240	185	126	105	111	163	209	227	206	160	109			
125	108	117	169	217	239	222	177	125	112	117	157	197	212	195	154	114			
130	115	124	163	204	223	209	171	130	118	123	150	184	198	183	148	120			
135	121	129	156	192	208	196	163	135	122	126	142	171	184	170	141	124			
140	124	131	148	178	193	183	153	137	124	127	139	157	168	158	137	127			
145	126	131	147	165	177	168	150	137	125	126	140	144	153	146	139	128			
150	128	131	147	155	160	156	150	134	126	122	135	145	147	145	140	127			
155	125	129	144	153	156	154	145	128	121	114	132	141	145	144	138	128			
160	111	120	140	148	151	149	139	117	109	109	113	133	140	140	137	129			
165	96.9	116	134	141	143	139	120	101	96.5	96.6	95.4	115	128	135	131	124			
170	84.2	108	123	131	132	116	96.9	89.5	87.0	86.8	91.3	92.1	106	124	124	115			
175	92.5	96.2	111	115	103	92.3	93.2	95.3	96.1	95.3	95.6	93.8	87.8	92.4	107	107			
180	103	101	98.1	85.5	73.0	84.3	93.9	100	102	101	99.5	96.6	87.7	69.4	83.2	95.5			

C Range: 0 - 360DEG  
 C Interval: 22.5DEG  
 Test Speed: HIGH  
 Temperature:25.8DEG  
 Operators:Carl  
 Test Date:2022-06-24

γ Range: 0 - 180DEG  
 γ Interval: 1.0DEG  
 Test System:EVERFINE GO-R5000\_V2 SYSTEM V2.0.351  
 Humidity:42%  
 Test Distance:2.526m [K=1.0000]  
 Remarks: