



LED WALL SCONCE LOFT

► **DESIGN** - LED WALL SCONCE LOFT has a modern, multipurpose design and a stylish look with efficient lighting. Durable housing resistant to rust and impact provides many years of service. The acrylic lens with a 125° beam angle grants you even light distribution. It is designed to operate on 120V circuits.

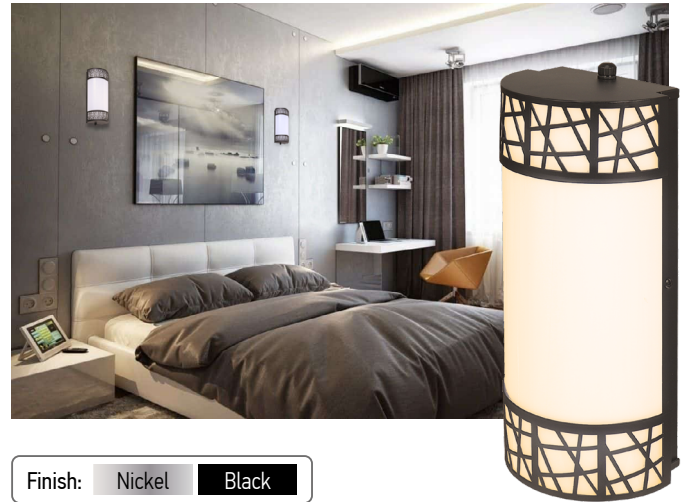
► **COLOR SELECTABLE** - You can choose either a 2,700K soft white, 3,000K warm white, 3,500K neutral white, 4,000K cool white, or 5,000K daylight color temperature.

► **DIMMING** - Smooth triac dimming capabilities ranging from 10% to 100% with modern LED dimmers allow you to control the look and feel of your space.

► **APPLICATION** - The LED WALL SCONCE LOFT provides bright, yet smooth lighting for your family room, bedroom, hallway, corridor, or any other common area in your living space. This fixture is also Damp Locations rated.

► **ADVANTAGES** - With a lifespan of 50,000 hours, these fixtures are made to last decades under normal operation! ASD provides a 5-year limited warranty along with ETL certification to guarantee top quality products and safety!

Catalog number	
Notes	
Type	



Finish: Nickel Black

Model	Size	Watts	Voltage	Dimmable	Lumens	CCT	Finish	Dimensions (LxWxH)
ASD-LWS-LF-12D15AC-NK	12 inch	15W	120 V	TRIAC	up to 1,124 lm	5CCT (2,700/3,000/3,500/4,000/5,000 K)	Nickel	5-1/4" x 3-11/16" x 12-11/16"
ASD-LOFT-WS-12D15NK	12 inch	15W	120 V	TRIAC	up to 1,124 lm	5CCT (2,700/3,000/3,500/4,000/5,000 K)	Nickel	5-1/4" x 3-11/16" x 12-11/16"
ASD-LWS-LF-12D15AC-BK	12 inch	15W	120 V	TRIAC	up to 1,124 lm	5CCT (2,700/3,000/3,500/4,000/5,000 K)	Black	5-1/4" x 3-11/16" x 12-11/16"
ASD-LOFT-WS-12D15BK	12 inch	15W	120 V	TRIAC	up to 1,124 lm	5CCT (2,700/3,000/3,500/4,000/5,000 K)	Black	5-1/4" x 3-11/16" x 12-11/16"

For detailed luminous flux information please refer to Annex 1.

ORDERING INFORMATION

Model	UPC	Pcs. per carton	Carton size	Carton weight	GTIN 14
ASD-LWS-LF-12D15AC-NK	810128110181	4	14" x 15.2" x 11.8"	12.6 lbs	10810128110188
ASD-LOFT-WS-12D15NK	810128117012	4	14" x 15.2" x 11.8"	12.6 lbs	10810128117019
ASD-LWS-LF-12D15AC-BK	810128110174	4	14" x 15.2" x 11.8"	12.6 lbs	10810128110171
ASD-LOFT-WS-12D15BK	810128117005	4	14" x 15.2" x 11.8"	12.6 lbs	10810128117002

ANNEX 1

Model	Watts	2,700 K	3,000 K	3,500 K	4,000 K	5,000 K
ASD-LWS-LF-12D15AC-NK ASD-LOFT-WS-12D15NK ASD-LWS-LF-12D15AC-BK ASD-LOFT-WS-12D15BK	12W	1,000 lm	1,081 lm	1,105 lm	1,148 lm	1,124 lm

For most up-to-date spec sheets please refer to asd-lighting.com



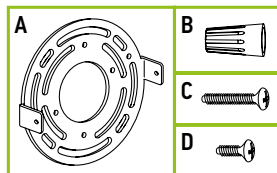
LED WALL SCONCE LOFT

PRODUCT SPECIFICATIONS:

Construction & Materials		
Housing	Steel	
Lens	Acrylic	
Finish	Nickel, Black	
Weight	2 lbs (0.9 kg)	
Environmental system		
Work environment	Suitable for Damp Locations	
Operating temperature	-4°F to 113°F (-20°C to 45°C)	
L-70 Life	> 50,000 hrs	
Optical system		
Color temperature	5CCT switch (2,700/3,000/3,500/4,000/5,000 K), 3,000 K by default	
CRI	> 80	
Electrical system		
Input voltage	120 V	
Max input current	0.16 A	
Inrush current (Action time)	0.13 A (0.1 S)	
Off state power	0W	
Power consumption	15W	
Power factor	> 0.9	
Surge protection DM/CM	1.25 kV / 1.25 kV	
Dimming range		
10-100%		
Dimming compatible controls		
Brand	Lutron Leviton	
Models	MACL-153MLH-WH STCL-153PH-WH PD-6WCL-WH-R DVCL-153PR P-PKG1W	R02-DW6HD-2RW R00-RNL06-0TW R68-06674-P0T DSL06
	Regular and voluntary certifications	
	5-year limited warranty	
	cETLus certified 4001256	

PACKAGE CONTENTS:

Description	Q-ty
LED Wall Sconce Loft	1
Mounting plate (A)	1
Wire nut (B)	3
Mounting screw (C)	2
Fixture screw (D)	2
Box	1



INSTALLATION GUIDE

IMPORTANT SAFETY INFORMATION:

Please read all the instructions below before installation.

- ▶ Make sure that the supply voltage corresponds to the rated product voltage.
- ▶ The product must be installed by a qualified electrician in accordance with the National Electrical Code and corresponding local codes.
- ▶ If the product is damaged, do not use it.

⚠ WARNING

RISK OF PERSONAL INJURY – READ and follow all WARNINGS and installation instructions. Keep or give to the owner for future reference.

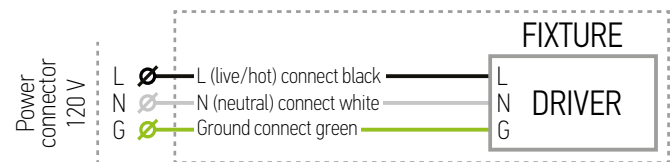
Risk of cuts: Wear gloves to prevent cuts or abrasions when removing from carton, handling, installing, and maintaining this product.

Risk of electric shock: This product must be installed in accordance with the applicable installation code by a person familiar with the construction and operation of the product and the hazards involved.

Risk of Fire: Minimum 194°F supply conductors. Consult a qualified electrician to ensure correct branch circuit conductor.

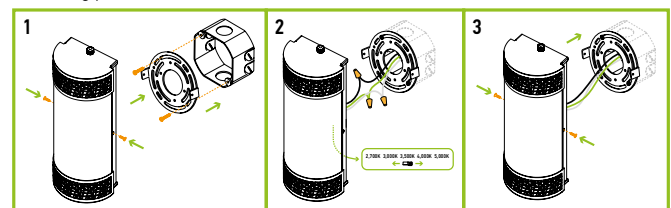
ASD® assumes no responsibility for claims arising out of improper or careless installation or handling of this product.

ELECTRICAL SCHEMATIC DIAGRAM:



INSTALLATION STEPS:

1. Unscrew the two fixture screws from both sides of the wall sconce. Remove the mounting plate and attach it to the existing outlet box using two mounting screws.
2. Choose preferred color temperature on the back side of the fixture by adjusting switch position. Connect the wires: Black to Black, White to White, Ground to Ground. Secure the connection with wire nuts.
3. Fix the wall sconce to the mounting plate using two fixture screws on both sides. Before tightening the screws, align the holes of both the fixture and the mounting plate to ensure a solid fit.



For most up-to-date spec sheets please refer to asd-lighting.com