

ASD[®] LED DISK LIGHT

► **DESIGN** - LED DISK LIGHT with a classic, low-profile design is an ideal solution for low ceilings. The acrylic lens with a 120° beam angle grants you even light distribution. With 2.5kV surge protection, it is designed to operate on 120V circuits.

► **MOTION SENSOR** - The built-in motion sensor turns off the fixture automatically when no motion is detected.

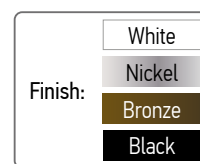
► **COLOR SELECTABLE** - You can choose either a 2,700K soft white, 3,000K warm white, 3,500K neutral white, 4,000K cool white, or 5,000K daylight color temperature.

► **INSTALLATION** - The fixture can be installed on either an existing outlet box or a remodeled can by using a retrofit kit with universal TP24 or E26 connectors. It is also Wet Locations rated. 2.75", 3.5" and 4" mounting holes expand your installation options.

► **ADVANTAGES** - With a lifespan of 50,000 hours, these fixtures are made to last decades under normal operation! Closet rated if installed in accordance with NEC 410.16. ASD provides a 5-year limited warranty along with UL certification to guarantee top quality products and safety!



Closet rated if installed in accordance with NEC 410.16



Model	Size	Power	Voltage	Dimming	Lumens	CCT	IC rated	Finish	Dimensions	Airtight
LDS										
ASD-LDS-4D1030-WH-6PACK	4 inch	10W	120 V	TRIAC	650 lm	3,000 K	-	White	5-7/8" x 7/8"	-
ASD-LDS-4D1040-WH-6PACK	4 inch	10W	120 V	TRIAC	650 lm	4,000 K	-	White	5-7/8" x 7/8"	-
ASD-LDS-4D1050-WH-6PACK	4 inch	10W	120 V	TRIAC	650 lm	5,000 K	-	White	5-7/8" x 7/8"	-
ASD-LDS-4D10WH	4 inch	10W	120 V	TRIAC	up to 685 lm	5CCT (2,700/3,000/3,500/4,000/5,000 K)	-	White	5-7/8" x 7/8"	-
ASD-LDS-4D10AC-WH-6PACK	4 inch	10W	120 V	TRIAC	up to 685 lm	5CCT (2,700/3,000/3,500/4,000/5,000 K)	-	White	5-7/8" x 7/8"	-
ASD-LDS-4D10AC-WH-12PACK	4 inch	10W	120 V	TRIAC	up to 685 lm	5CCT (2,700/3,000/3,500/4,000/5,000 K)	-	White	5-7/8" x 7/8"	-
ASD-LDS-4D10AC-NK-6PACK	4 inch	10W	120 V	TRIAC	up to 685 lm	5CCT (2,700/3,000/3,500/4,000/5,000 K)	-	Nickel	5-7/8" x 7/8"	-
ASD-LDS-4D10AC-BZ-6PACK	4 inch	10W	120 V	TRIAC	up to 685 lm	5CCT (2,700/3,000/3,500/4,000/5,000 K)	-	Bronze	5-7/8" x 7/8"	-
ASD-LDS-4D10AC-BK-6PACK	4 inch	10W	120 V	TRIAC	up to 685 lm	5CCT (2,700/3,000/3,500/4,000/5,000 K)	-	Black	5-7/8" x 7/8"	-
ASD-LDS-4D10AC-BK-12PACK	4 inch	10W	120 V	TRIAC	up to 685 lm	5CCT (2,700/3,000/3,500/4,000/5,000 K)	-	Black	5-7/8" x 7/8"	-
ASD-LDS-6D1530-WH-6PACK	6 inch	15W	120 V	TRIAC	1,200 lm	3,000 K	-	White	7-5/16" x 15/16"	-
ASD-LDS-6D1530-WH-12PACK	6 inch	15W	120 V	TRIAC	1,200 lm	3,000 K	-	White	7-5/16" x 15/16"	-
ASD-LDS-6D1540-WH-6PACK	6 inch	15W	120 V	TRIAC	1,300 lm	4,000 K	-	White	7-5/16" x 15/16"	-
ASD-LDS-6D1540-WH-12PACK	6 inch	15W	120 V	TRIAC	1,300 lm	4,000 K	-	White	7-5/16" x 15/16"	-
ASD-LDS-6D1550-WH-6PACK	6 inch	15W	120 V	TRIAC	1,300 lm	5,000 K	-	White	7-5/16" x 15/16"	-
ASD-LDS-6D1550-WH-12PACK	6 inch	15W	120 V	TRIAC	1,300 lm	5,000 K	-	White	7-5/16" x 15/16"	-
ASD-LDS-6D15WH	6 inch	15W	120 V	TRIAC	up to 1,245 lm	5CCT (2,700/3,000/3,500/4,000/5,000 K)	-	White	7-5/16" x 15/16"	-
ASD-LDS-6D15AC-WH-6PACK	6 inch	15W	120 V	TRIAC	up to 1,245 lm	5CCT (2,700/3,000/3,500/4,000/5,000 K)	-	White	7-5/16" x 15/16"	-
ASD-LDS-6D15AC-WH-12PACK	6 inch	15W	120 V	TRIAC	up to 1,245 lm	5CCT (2,700/3,000/3,500/4,000/5,000 K)	-	White	7-5/16" x 15/16"	-
ASD-LDS-6D15MW	6 inch	15W	120 V	TRIAC	up to 1,245 lm	5CCT (2,700/3,000/3,500/4,000/5,000 K)	Yes	Matte white	7-5/16" x 15/16"	Yes
ASD-LDS-6D15NK	6 inch	15W	120 V	TRIAC	up to 1,245 lm	5CCT (2,700/3,000/3,500/4,000/5,000 K)	-	Nickel	7-5/16" x 15/16"	-
ASD-LDS-6D15AC-NK-6PACK	6 inch	15W	120 V	TRIAC	up to 1,245 lm	5CCT (2,700/3,000/3,500/4,000/5,000 K)	-	Nickel	7-5/16" x 15/16"	-
ASD-LDS-6D15BR	6 inch	15W	120 V	TRIAC	up to 1,245 lm	5CCT (2,700/3,000/3,500/4,000/5,000 K)	-	Bronze	7-5/16" x 15/16"	-
ASD-LDS-6D15AC-BZ-6PACK	6 inch	15W	120 V	TRIAC	up to 1,245 lm	5CCT (2,700/3,000/3,500/4,000/5,000 K)	-	Bronze	7-5/16" x 15/16"	-
ASD-LDS-6D15BK	6 inch	15W	120 V	TRIAC	up to 1,245 lm	5CCT (2,700/3,000/3,500/4,000/5,000 K)	-	Black	7-5/16" x 15/16"	-
ASD-LDS-6D15AC-BK-6PACK	6 inch	15W	120 V	TRIAC	up to 1,245 lm	5CCT (2,700/3,000/3,500/4,000/5,000 K)	-	Black	7-5/16" x 15/16"	-
ASD-LDS-6D15AC-BK-12PACK	6 inch	15W	120 V	TRIAC	up to 1,245 lm	5CCT (2,700/3,000/3,500/4,000/5,000 K)	-	Black	7-5/16" x 15/16"	-
ASD-LDS-6D15MB	6 inch	15W	120 V	TRIAC	up to 1,245 lm	5CCT (2,700/3,000/3,500/4,000/5,000 K)	Yes	Matte black	7-5/16" x 15/16"	Yes
LDS-MS WITH MOTION SENSOR										
ASD-LDS-6N15WH-MS	6 inch	15W	120 V	-	up to 1,149 lm	5CCT (2,700/3,000/3,500/4,000/5,000 K)	-	White	7-5/16" x 1-1/4"	-
ASD-LDS-6N15AC-MS-WH-6PACK	6 inch	15W	120 V	-	up to 1,149 lm	5CCT (2,700/3,000/3,500/4,000/5,000 K)	-	White	7-5/16" x 1-1/4"	-
ASD-LDS-6N15AC-MS-BK-6PACK	6 inch	15W	120 V	-	up to 1,149 lm	5CCT (2,700/3,000/3,500/4,000/5,000 K)	-	Black	7-5/16" x 1-1/4"	-

For detailed luminous flux information please refer to Annex 1, page 6.

For most up-to-date spec sheets please refer to asd-lighting.com



LED DISK LIGHT

PRODUCT SPECIFICATIONS:

Construction & Materials						
Housing	Iron		for ASD-LDS-6D15MW, ASD-LDS-6D15MB models: Metal			
Diffuser	PC	for 1 CCT models: Acrylic		for ASD-LDS-6D15MW, ASD-LDS-6D15MB models: Plastic		
Finish	White, Matte white, Nickel, Bronze, Black, Matte black					
Weight	ASD-LDS-4D1030-WH-6PACK	2.8 lbs (1.3 kg)	ASD-LDS-6D1530-WH-6PACK	3.5 lbs (1.6 kg)	ASD-LDS-6D15AC-NK-6PACK	3.5 lbs (1.6 kg)
	ASD-LDS-4D1040-WH-6PACK		ASD-LDS-6D1530-WH-12PACK	7.3 lbs (3.3 kg)	ASD-LDS-6D15BR	0.7 lbs (0.3 kg)
	ASD-LDS-4D1050-WH-6PACK		ASD-LDS-6D1540-WH-6PACK	3.5 lbs (1.6 kg)	ASD-LDS-6D15AC-BZ-6PACK	3.5 lbs (1.6 kg)
	ASD-LDS-4D10WH	0.4 lbs (0.2 kg)	ASD-LDS-6D1540-WH-12PACK	7.3 lbs (3.3 kg)	ASD-LDS-6D15BK	0.7 lbs (0.3 kg)
	ASD-LDS-4D10AC-WH-6PACK	2.8 lbs (1.3 kg)	ASD-LDS-6D1550-WH-6PACK	3.5 lbs (1.6 kg)	ASD-LDS-6D15AC-BK-6PACK	3.5 lbs (1.6 kg)
	ASD-LDS-4D10AC-WH-12PACK	5.5 lbs (2.5 kg)	ASD-LDS-6D1550-WH-12PACK	7.3 lbs (3.3 kg)	ASD-LDS-6D15AC-BK-12PACK	7.3 lbs (3.3 kg)
	ASD-LDS-4D10AC-NK-6PACK	2.8 lbs (1.3 kg)	ASD-LDS-6D15WH	0.7 lbs (0.3 kg)	ASD-LDS-6D15MB	0.5 lbs (0.2 kg)
	ASD-LDS-4D10AC-BZ-6PACK		ASD-LDS-6D15AC-WH-6PACK	3.5 lbs (1.6 kg)	ASD-LDS-6N15WH-MS	0.6 lbs (0.3 kg)
	ASD-LDS-4D10BK	0.4 lbs (0.2 kg)	ASD-LDS-6D15AC-WH-12PACK	7.3 lbs (3.3 kg)	ASD-LDS-6N15AC-MS-WH-6PACK	5.3 lbs (2.4 kg)
	ASD-LDS-4D10AC-BK-6PACK	2.8 lbs (1.3 kg)	ASD-LDS-6D15MW	0.5 lbs (0.2 kg)	ASD-LDS-6N15AC-MS-BK-6PACK	
ASD-LDS-4D10AC-BK-12PACK	5.5 lbs (2.5 kg)	ASD-LDS-6D15NK	0.7 lbs (0.3 kg)			
Environmental system						
Work environment	Suitable for Wet Locations					
Operating temperature	-4°F to 104°F (-20°C to 40°C)		for ASD-LDS-6D15MW, ASD-LDS-6D15MB models: -4°F to 113°F (-20°C to 45°C)			
L-70 Life	> 50,000 hrs					
Optical system						
Color temperature	3,000 K; 4,000 K; 5,000 K 5CCT switch (2,700/3,000/3,500/4,000/5,000 K), 3,000 K by default					
CRI	> 90					
Electrical system						
Input voltage	120 V					
Max input current	ASD-LDS-4D1030-WH-6PACK	0.1 A	ASD-LDS-6D1530-WH-6PACK	0.15 A	ASD-LDS-6D15AC-NK-6PACK	0.13 A
	ASD-LDS-4D1040-WH-6PACK		ASD-LDS-6D1530-WH-12PACK		ASD-LDS-6D15BR	
	ASD-LDS-4D1050-WH-6PACK		ASD-LDS-6D1540-WH-6PACK		ASD-LDS-6D15AC-BZ-6PACK	
	ASD-LDS-4D10WH		ASD-LDS-6D1540-WH-12PACK		ASD-LDS-6D15BK	
	ASD-LDS-4D10AC-WH-6PACK		ASD-LDS-6D1550-WH-6PACK		ASD-LDS-6D15AC-BK-6PACK	
	ASD-LDS-4D10AC-WH-12PACK		ASD-LDS-6D1550-WH-12PACK	ASD-LDS-6D15AC-BK-12PACK		
	ASD-LDS-4D10AC-NK-6PACK		ASD-LDS-6D15WH	ASD-LDS-6D15MB	0.15 A	
	ASD-LDS-4D10AC-BZ-6PACK		ASD-LDS-6D15AC-WH-6PACK	ASD-LDS-6N15WH-MS	0.13 A	
	ASD-LDS-4D10BK		ASD-LDS-6D15AC-WH-12PACK	ASD-LDS-6N15AC-MS-WH-6PACK		
	ASD-LDS-4D10AC-BK-6PACK		ASD-LDS-6D15MW	ASD-LDS-6N15AC-MS-BK-6PACK	0.15 A	
ASD-LDS-4D10AC-BK-12PACK	ASD-LDS-6D15NK		0.13 A			
Inrush current (Action time)	ASD-LDS-4D1030-WH-6PACK	0.2 A (0.01 S)	ASD-LDS-6D1530-WH-6PACK	0.2 A (0.01 S)	ASD-LDS-6D15AC-NK-6PACK	42 A (0.01 S)
	ASD-LDS-4D1040-WH-6PACK		ASD-LDS-6D1530-WH-12PACK		ASD-LDS-6D15BR	
	ASD-LDS-4D1050-WH-6PACK		ASD-LDS-6D1540-WH-6PACK		ASD-LDS-6D15AC-BZ-6PACK	
	ASD-LDS-4D10WH	ASD-LDS-6D1540-WH-12PACK	ASD-LDS-6D15BK	42 A (0.02 S)		
	ASD-LDS-4D10AC-WH-6PACK	ASD-LDS-6D1550-WH-6PACK	ASD-LDS-6D15AC-BK-6PACK			
	ASD-LDS-4D10AC-WH-12PACK	ASD-LDS-6D1550-WH-12PACK	ASD-LDS-6D15AC-BK-12PACK	0.3 A (0.24 S)		
	ASD-LDS-4D10AC-NK-6PACK	ASD-LDS-6D15WH	ASD-LDS-6D15MB	42 A (0.02 S)		
	ASD-LDS-4D10AC-BZ-6PACK	ASD-LDS-6D15AC-WH-6PACK	ASD-LDS-6N15WH-MS			
	ASD-LDS-4D10BK	ASD-LDS-6D15AC-WH-12PACK	ASD-LDS-6N15AC-MS-WH-6PACK	0.3 A (0.24 S)		
	ASD-LDS-4D10AC-BK-6PACK	ASD-LDS-6D15MW	ASD-LDS-6N15AC-MS-BK-6PACK			
ASD-LDS-4D10AC-BK-12PACK	ASD-LDS-6D15NK		42 A (0.01 S)			
Off state power	0W					
Power consumption	for 4" models: 10W		for 6" models: 15W			
Power factor	> 0.9					
Output voltage	132 V		for 4" 5CCT models: 126 V		for ASD-LDS-6D15MW, ASD-LDS-6D15MB models: 112 V	
Max output current	ASD-LDS-4D1030-WH-6PACK	0.067 A	ASD-LDS-6D1530-WH-6PACK	0.65 A	ASD-LDS-6D15AC-NK-6PACK	0.1 A
	ASD-LDS-4D1040-WH-6PACK		ASD-LDS-6D1530-WH-12PACK		ASD-LDS-6D15BR	
	ASD-LDS-4D1050-WH-6PACK		ASD-LDS-6D1540-WH-6PACK		ASD-LDS-6D15AC-BZ-6PACK	
	ASD-LDS-4D10WH	ASD-LDS-6D1540-WH-12PACK	ASD-LDS-6D15BK			
	ASD-LDS-4D10AC-WH-6PACK	ASD-LDS-6D1550-WH-6PACK	ASD-LDS-6D15AC-BK-6PACK			
	ASD-LDS-4D10AC-WH-12PACK	ASD-LDS-6D1550-WH-12PACK	ASD-LDS-6D15AC-BK-12PACK			
	ASD-LDS-4D10AC-NK-6PACK	ASD-LDS-6D15WH	ASD-LDS-6D15MB	0.12 A		
	ASD-LDS-4D10AC-BZ-6PACK	ASD-LDS-6D15AC-WH-6PACK	ASD-LDS-6N15WH-MS	0.1 A		
	ASD-LDS-4D10BK	ASD-LDS-6D15AC-WH-12PACK	ASD-LDS-6N15AC-MS-WH-6PACK			
	ASD-LDS-4D10AC-BK-6PACK	ASD-LDS-6D15MW	ASD-LDS-6N15AC-MS-BK-6PACK	0.12 A		
ASD-LDS-4D10AC-BK-12PACK	ASD-LDS-6D15NK		0.1 A			
Surge protection DM/CM	2.5 kV / 2.5 kV		for ASD-LDS-6D15MW, ASD-LDS-6D15MB models: 0.5 kV / 1 kV			
Dimming range						
10-100%						

For most up-to-date spec sheets please refer to asd-lighting.com

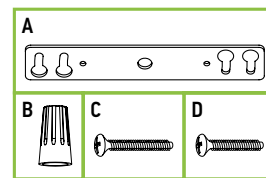
ASD[®] LED DISK LIGHT

Dimming compatible controls for 5CCT models					Regular and voluntary certifications	
Brand	Lutron			Leviton		5-year limited warranty
Models	DVWCL-153PH-LA	CTCL-150H-WH	S-600PR-WH	6633-P		UL certified E473804 (except 1CCT and ASD-LDS-6D15MW, ASD-LDS-6D15MB models)
	DVW-603PGH-WH	CT-600PR-WH	DV-600P	IPL06		cETLus certified 4008281 (for 1CCT models)
	CTCL-153PR-WH	CT-103PR-WH	NT-1000	6674		cETLus certified 5011772 (for ASD-LDS-6D15MW, ASD-LDS-6D15MB models)
	CT-603PGH-WH	SLV-600P-WH	S-603P	6672		Title 24 JA8-2022 compliant (except ASD-LDS-4D1050-WH-6PACK, ASD-LDS-4D10WH, ASD-LDS-4D10BK, ASD-LDS-6D1550-WH-6PACK, ASD-LDS-6D1550-WH-12PACK, ASD-LDS-6D15WH, ASD-LDS-6D15MW, ASD-LDS-6D15NK, ASD-LDS-6D15BR, ASD-LDS-6D15BK, ASD-LDS-6D15MB, ASD-LDS-6N15WH-MS models)
	DVCL-153P-WH	DVLY-603P-IV	S-600P			FCC compliant
Dimming compatible controls for 1CCT models					Closet rated if installed in accordance with NEC 410.16	
Brand	Lutron			Leviton		
Models	DVW-603PGH-WH	CTCL-153PDH	OB33K1	6674		
	MACL-153M-WH	CT-603PG	6633-P	6672		
	DVCL-153P-WH	DV-600P	1E1205	6631		
	SLV-600P-WH	S-600P	1F4205			
	DVLY-603P-IV	S-603P				

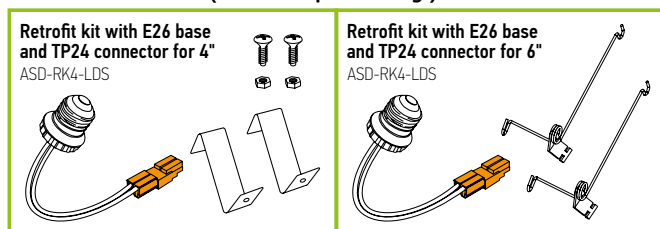
* The list of dimmers is relevant for models without a motion sensor.

PACKAGE CONTENTS:

Description	Quantity
LED Disk Light	6 (12 for 12 pack)
Crossbar (A) for 4" models	1
Wire nut (B)	3
Screw (C)	2
Screw (D)	2
Box	1



ACCESSORIES (sold separately):

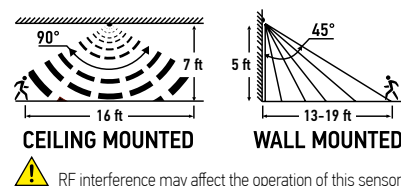


ACCESSORY COMPATIBILITY LIST:

Models	Accessories	
	Retrofit kit with E26 base and TP24 connector for 4" ASD-RK4-LDS	Retrofit kit with E26 base and TP24 connector for 6" ASD-RK6-LDS
ASD-LDS	4" 6"	•

BUILT-IN MOTION SENSOR INFORMATION

- The light is ON for 12 S, after you turn ON the power.
- The light is ON when movement is detected.
- After last detection the lights remains ON for 1/5/10 min. as prefer.
- After stand-by period, light turns OFF automatically.



INSTALLATION GUIDE

IMPORTANT SAFETY INFORMATION:

Please read all the instructions below before installation.

- Make sure that the supply voltage corresponds to the rated product voltage.
- The product must be installed by a qualified electrician in accordance with the National Electrical Code and corresponding local codes.
- If the product is damaged, do not use it.

⚠ WARNING

RISK OF PERSONAL INJURY – READ and follow all WARNINGS and installation instructions. Keep or give to the owner for future reference.

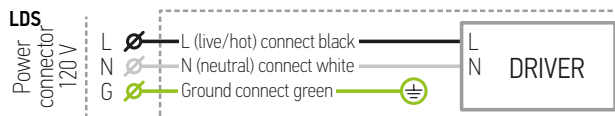
Risk of cuts: Wear gloves to prevent cuts or abrasions when removing from carton, handling, installing, and maintaining this product.

Risk of electric shock: This product must be installed in accordance with the applicable installation code by a person familiar with the construction and operation of the product and the hazards involved.

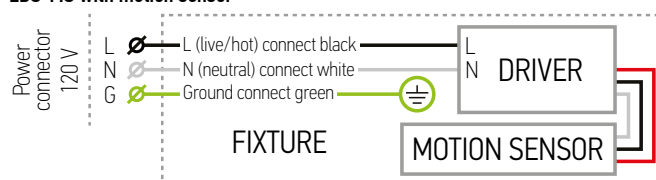
Risk of Fire: Minimum 194°F supply conductors. Consult a qualified electrician to ensure correct branch circuit conductor.

ASD[®] assumes no responsibility for claims arising out of improper or careless installation or handling of this product.

ELECTRICAL SCHEMATIC DIAGRAM:



LDS-MS with motion sensor



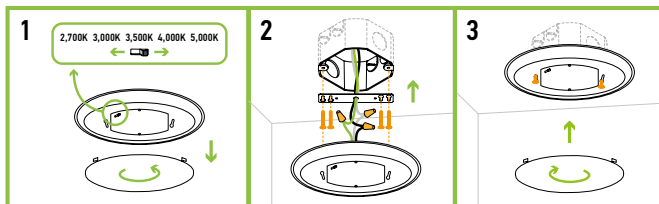
For most up-to-date spec sheets please refer to asd-lighting.com



LED DISK LIGHT

INSTALLATION STEPS 4" MODELS:

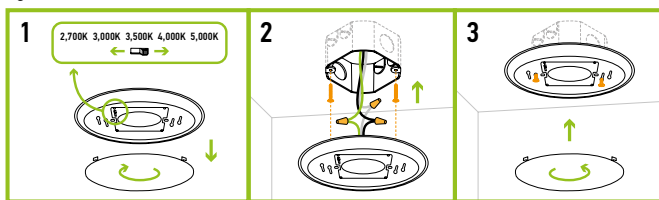
1. Remove the lens by turning it counter clockwise. Choose needed color temperature by adjusting the switch (for models with 5CCT).
2. This fixture fits most outlet boxes with 2.75", 3.5" or 4" holes. Attach the crossbar to the outlet box using two screws. Insert another two screws into the crossbar. Connect the wires: Black to Black, White to White, Green to Green. Secure the connection with wire nuts. Tuck all the wires into the outlet box.
3. Attach the fixture to the crossbar by feeding screws through the keyhole slots and then tighten the screws in the narrow end of the keyhole slots. Do not over tighten. Place the Lens back and turn it clockwise to secure.



* Please ensure that when installed in closets, ASD-LDS-AC has a minimum of 12 inches of clearance from the defined storage area.

INSTALLATION STEPS 6" MODELS:

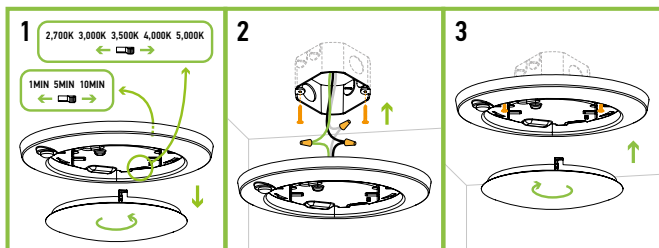
1. Remove the lens by turning it clockwise. Choose needed color temperature by adjusting the switch (for models with 5CCT).
2. This fixture fits most outlet boxes with 2.75", 3.5" or 4" holes. Insert two screws into the outlet box. Connect the wires: Black to Black, White to White, Green to Green. Secure the connection with wire nuts. Tuck all the wires into the outlet box.
3. Attach the fixture to the outlet box by feeding screws through the keyhole slots and then tighten the screws in the narrow end of the keyhole slots. Do not over tighten. Place the Lens back and turn it counter clockwise to secure.



* Please ensure that when installed in closets, ASD-LDS-AC has a minimum of 12 inches of clearance from the defined storage area.

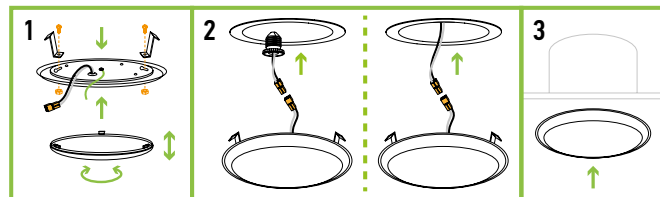
INSTALLATION MOTION SENSOR MODELS:

1. Remove the Lens by turning it counter clockwise. Choose preferred color temperature by adjusting the switch position. Choose preferred motion sensor settings.
2. Insert two screws into the outlet box. Connect the wires: Black to Black, White to White, Green to Green. Secure the connection with wire nuts. Tuck all the wires into the outlet box.
3. Attach the fixture to the outlet box by feeding screws through the keyhole slots and then tighten the screws in the narrow end of the keyhole slots. Do not over tighten. Place the Lens back and turn it clockwise to fix.



RECESSED CAN INSTALLATION 4" ASD-RK4-LDS sold separately:

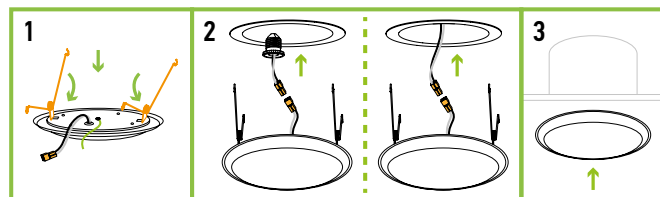
1. Remove the existing fixture. Remove the Lens by turning it counter clockwise. Attach remodeled clips. Secure with screws and nut. Place the Lens back and turn it clockwise.
2. Link TP24 connector with the fixture wires. Connect the E26 Adapter and thread it into the socket of the recessed Can or connect it with TP24 of the recessed Can directly.
3. Carefully route wires, and push fixture up to ceiling surface.



* Please ensure that when installed in closets, ASD-LDS-AC has a minimum of 6 inches of clearance from the defined storage area.

RECESSED CAN INSTALLATION 6" ASD-RK6-LDS sold separately:

1. Place the spring clip arms into the rectangular slots and twist them in a locked position. The spring clips must be adjusted depending on the Can size.
2. Link TP24 connector with the fixture wires. Connect the E26 Adapter and thread it into the socket of the recessed Can or connect it with TP24 of the recessed Can directly.
3. Squeeze the two sets of spring clip arms up towards each other. Carefully route wires into the Can, and hook both sets of spring clip arms into the arm hooks on the inside wall of the Can. Release spring clip arms and gently push the Disk Light up into the Can until flush against the ceiling surface.



* Please ensure that when installed in closets, ASD-LDS-AC has a minimum of 6 inches of clearance from the defined storage area.

For most up-to-date spec sheets please refer to asd-lighting.com



LED DISK LIGHT

ORDERING INFORMATION

Model	UPC	Pcs. (pack) per carton	Carton size	Carton weight	GTIN 14
LDS					
ASD-LDS-4D1030-WH-6PACK	810050738606	12 (2)	13.4" x 6.9" x 7.5"	6.8 lbs	10810050738603
ASD-LDS-4D1040-WH-6PACK	810050738521	12 (2)	13.4" x 6.9" x 7.5"	6.8 lbs	10810050738528
ASD-LDS-4D1050-WH-6PACK	810050738538	12 (2)	13.4" x 6.9" x 7.5"	6.8 lbs	10810050738535
ASD-LDS-4D10WH	810128116459	6	12.8" x 4.9" x 6.7"	3.7 lbs	10810128116456
ASD-LDS-4D10AC-WH-6PACK	810050738545	12 (2)	13.4" x 6.9" x 7.5"	6.8 lbs	10810050738542
ASD-LDS-4D10AC-WH-12PACK	810128116466	12 (1)	13.4" x 6.1" x 6.7"	6.4 lbs	-
ASD-LDS-4D10AC-NK-6PACK	810050738569	12 (2)	13.4" x 6.9" x 7.5"	6.8 lbs	10810050738566
ASD-LDS-4D10AC-BZ-6PACK	819201023271	12 (2)	13.4" x 6.9" x 7.5"	6.8 lbs	10819201023278
ASD-LDS-4D10BK	810128116473	6	12.8" x 4.9" x 6.7"	3.7 lbs	10810128116470
ASD-LDS-4D10AC-BK-6PACK	810050738552	12 (2)	13.4" x 6.9" x 7.5"	6.8 lbs	10810050738559
ASD-LDS-4D10AC-BK-12PACK	810128116480	12 (1)	13.4" x 6.1" x 6.7"	6.4 lbs	-
ASD-LDS-6D1530-WH-6PACK	810050737401	12 (2)	16.3" x 8.9" x 6.9"	9.2 lbs	10810050737408
ASD-LDS-6D1530-WH-12PACK	810050737821	12 (1)	15.4" x 6.1" x 8.1"	7.9 lbs	-
ASD-LDS-6D1540-WH-6PACK	810050737418	12 (2)	16.3" x 8.9" x 6.9"	9.2 lbs	10810050737415
ASD-LDS-6D1540-WH-12PACK	810050738774	12 (1)	15.4" x 6.1" x 8.1"	7.9 lbs	-
ASD-LDS-6D1550-WH-6PACK	810050737425	12 (2)	16.3" x 8.9" x 6.9"	9.2 lbs	10810050737422
ASD-LDS-6D1550-WH-12PACK	810128111515	12 (1)	15.4" x 6.1" x 8.1"	7.9 lbs	-
ASD-LDS-6D15WH	810128116428	6	15.6" x 4.9" x 8.1"	5.3 lbs	10810128116425
ASD-LDS-6D15AC-WH-6PACK	810050738354	12 (2)	16.3" x 8.9" x 6.9"	9.2 lbs	20810050738358
ASD-LDS-6D15AC-WH-12PACK	810050738880	12 (1)	15.4" x 6.1" x 8.1"	7.9 lbs	-
ASD-LDS-6D15MW	810128115230	6	8" x 8.2" x 8.1"	4.5 lbs	10810128115237
ASD-LDS-6D15NK	810128116411	6	15.6" x 4.9" x 8.1"	5.3 lbs	10810128116418
ASD-LDS-6D15AC-NK-6PACK	810050738378	12 (2)	16.3" x 8.9" x 6.9"	9.2 lbs	20810050738372
ASD-LDS-6D15BR	810128116701	6	15.6" x 4.9" x 8.1"	5.3 lbs	10810128116708
ASD-LDS-6D15AC-BZ-6PACK	819201023288	12 (2)	16.3" x 8.9" x 6.9"	9.2 lbs	10819201023285
ASD-LDS-6D15BK	810128116404	6	15.6" x 4.9" x 8.1"	5.3 lbs	10810128116401
ASD-LDS-6D15AC-BK-6PACK	810050738361	12 (2)	16.3" x 8.9" x 6.9"	9.2 lbs	20810050738365
ASD-LDS-6D15AC-BK-12PACK	810128117586	12 (1)	15.4" x 6.1" x 8.1"	7.9 lbs	-
ASD-LDS-6D15MB	810128115247	6	8" x 8.2" x 8.1"	4.5 lbs	10810128115244
LDS-MS WITH MOTION SENSOR					
ASD-LDS-6N15WH-MS	810128117593	6	15.6" x 5.5" x 8.1"	4.9 lbs	10810128117590
ASD-LDS-6N15AC-MS-WH-6PACK	810050738576	12 (2)	16.1" x 9.1" x 9.1"	12.1 lbs	10810050738573
ASD-LDS-6N15AC-MS-BK-6PACK	810128111522	12 (2)	16.1" x 9.1" x 9.1"	12.1 lbs	10810128111529

ACCESSORIES:

Model	Description	UPC	Pcs. in middle box	Middle box size	Middle box weight	GTIN 14 in middle box	Pcs. per carton	Carton size	Carton weight	GTIN 14 in carton
ASD-RK4-LDS	Retrofit kit with E26 base and TP24 connector for 4"	810050730105	12	5.2" x 4.3" x 5.2"	1.1 lbs	10810050730102	72	11.4" x 11.2" x 6.1"	7.3 lbs	20810050730109
ASD-RK4-LDS-6PACK	Retrofit kit with E26 base and TP24 connector for 4" 6 pack	810050739375	-	-	-	-	8	12.2" x 10.4" x 5.5"	4.6 lbs	10810050739372
ASD-RK6-LDS	Retrofit kit with E26 base and TP24 connector for 6"	810050730112	12	7.5" x 3.5" x 7.5"	1.2 lbs	10810050730119	48	14.6" x 8.1" x 8.1"	5.5 lbs	20810050730116
ASD-RK6-LDS-6PACK	Retrofit kit with E26 base and TP24 connector for 6" 6 pack	810050738897	-	-	-	-	8	15.6" x 8.7" x 8.1"	6 lbs	10810050738894

For most up-to-date spec sheets please refer to asd-lighting.com

ASD LIGHTING CORP

E-mail: orders@asd-lighting.com | Web site: www.asd-lighting.com





LED DISK LIGHT

ANNEX 1

Model	Watts	2,700 K	3,000 K	3,500 K	4,000 K	5,000 K
ASD-LDS-4D1030-WH-6PACK	10W	-	650 lm	-	-	-
ASD-LDS-4D1040-WH-6PACK	10W	-	-	-	650 lm	-
ASD-LDS-4D1050-WH-6PACK	10W	-	-	-	-	650 lm
ASD-LDS-4D10WH ASD-LDS-4D10AC-WH-6PACK ASD-LDS-4D10AC-WH-12PACK ASD-LDS-4D10AC-NK-6PACK ASD-LDS-4D10AC-BZ-6PACK ASD-LDS-4D10BK ASD-LDS-4D10AC-BK-6PACK ASD-LDS-4D10AC-BK-12PACK	10W	650 lm	674 lm	685 lm	660 lm	656 lm
ASD-LDS-6D1530-WH-6PACK ASD-LDS-6D1530-WH-12PACK	15W	-	1,200 lm	-	-	-
ASD-LDS-6D1540-WH-6PACK ASD-LDS-6D1540-WH-12PACK	15W	-	-	-	1,300 lm	-
ASD-LDS-6D1550-WH-6PACK ASD-LDS-6D1550-WH-12PACK	15W	-	-	-	-	1,300 lm
ASD-LDS-6D15MW ASD-LDS-6D15MB	15W	1,090 lm	1,233 lm	1,293 lm	1,243 lm	1,134 lm
ASD-LDS-6D15WH ASD-LDS-6D15AC-WH-6PACK ASD-LDS-6D15AC-WH-12PACK ASD-LDS-6D15NK ASD-LDS-6D15AC-NK-6PACK ASD-LDS-6D15BR ASD-LDS-6D15AC-BZ-6PACK ASD-LDS-6D15BK ASD-LDS-6D15AC-BK-6PACK ASD-LDS-6D15AC-BK-12PACK	15W	1,100 lm	1,207 lm	1,245 lm	1,218 lm	1,154 lm
ASD-LDS-6N15WH-MS ASD-LDS-6N15AC-MS-WH-6PACK ASD-LDS-6N15AC-MS-BK-6PACK	15W	1,050 lm	1,121 lm	1,135 lm	1,149 lm	1,134 lm

For most up-to-date spec sheets please refer to asd-lighting.com