



LED OUTDOOR WALL SCONCE

► **DESIGN** - LED OUTDOOR WALL SCONCE has a modern, multipurpose design and a stylish look with efficient lighting. Durable housing resistant to rust and impact provides many years of service. The acrylic lens with a 350° beam angle grants you even light distribution. It is designed to operate on 120-277V circuits and provides smooth triac dimming capabilities ranging from 10% to 100%.

► **COLOR SELECTABLE** - You can choose either a 3,000K warm white, 4,000K cool white or 5,000K daylight color temperature.

► **INSTALLATION** - Quick and easy installation, the fixture can be installed on standard 2.75" or 3.5" outlet box. The additional mounting holes provide secure installation options.

► **APPLICATION** - The fixture is rated for Wet Locations, making it perfect for indoor and outdoor projects such as decks, front doors, porches, patios, corridors, walkways, or any other common areas.

► **ADVANTAGES** - With a lifespan of 50,000 hours, these fixtures are made to last decades under normal operation! ASD provides a 5-year limited warranty along with ETL certification to guarantee top quality products and safety!

Catalog number	
Notes	
Type	



Model	Size	Watts	Voltage	Dimmable	Lumens	CCT	Finish	Dimensions (LxWxH)
ASD-LWS27C-18D18BK	18 inch	18W	120-277 V	TRIAC	1,099/1,183/1,186 lm	3CCT (3,000/4,000/5,000 K)	Black	18" x 5-7/8" x 1-13/16"
ASD-LWS27C-24D24BK	24 inch	24W	120-277 V	TRIAC	1,380/1,614/1,637 lm	3CCT (3,000/4,000/5,000 K)	Black	24" x 5-7/8" x 1-13/16"
ASD-LWS27C-36D30BK	36 inch	30W	120-277 V	TRIAC	1,584/1,798/1,856 lm	3CCT (3,000/4,000/5,000 K)	Black	36" x 5-7/8" x 1-13/16"
ASD-LWS27C-48D36BK	48 inch	36W	120-277 V	TRIAC	1,769/1,995/2,108 lm	3CCT (3,000/4,000/5,000 K)	Black	48" x 5-7/8" x 1-13/16"
ASD-LWS27C-72D40BK	72 inch	40W	120-277 V	TRIAC	1,936/2,148/2,338 lm	3CCT (3,000/4,000/5,000 K)	Black	72" x 5-7/8" x 1-13/16"

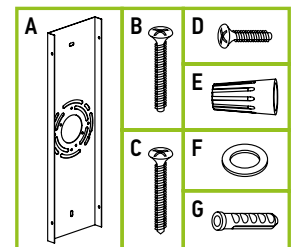
PRODUCT SPECIFICATIONS:

Construction & Materials		Dimming compatible controls	
Housing	Steel	Brand	Lutron Leviton
Lens	Acrylic		MACL-153MLH-WH R02-DW6HD-2RW
Finish	Black		STCL-153PH-WH R00-RNL06-0TW
Weight	ASD-LWS27C-18D18BK	5.1 lbs (2.3 kg)	PD-6WCL-WH-R R68-06674-POT
	ASD-LWS27C-24D24BK	6.9 lbs (3.1 kg)	DVCL-153PR DSL06
	ASD-LWS27C-36D30BK	10.1 lbs (4.6 kg)	
	ASD-LWS27C-48D36BK	13.7 lbs (6.2 kg)	
	ASD-LWS27C-72D40BK	21.6 lbs (9.8 kg)	
Environmental system		Regular and voluntary certifications	
Work environment	Suitable for Wet Locations	5-year limited warranty	cETLus certified 4001256
Operating temperature	-40°F to 113°F (-40°C to 45°C)		
L-70 Life	> 50,000 hrs		

Optical system		
Luminous flux	ASD-LWS27C-18D18BK	1,099/1,183/1,186 lm
	ASD-LWS27C-24D24BK	1,380/1,614/1,637 lm
	ASD-LWS27C-36D30BK	1,584/1,798/1,856 lm
	ASD-LWS27C-48D36BK	1,769/1,995/2,108 lm
	ASD-LWS27C-72D40BK	1,936/2,148/2,338 lm
Color temperature	3CCT switch (3,000/4,000/5,000 K), 3,000 K by default	
CRI	> 80	
Dimming range		
10-100%		

PACKAGE CONTENTS:

Description	Q-ty
LED Outdoor Wall Sconce	1
Mounting plate (A)	1
Mounting screw (B)	2
Self-tapping screw (C)	2
Fixture screw (D)	4
Wire nut (E)	3
Waterproof gasket (F)	4
Anchor (G)	2
Box	1



For most up-to-date spec sheets please refer to asd-lighting.com



LED OUTDOOR WALL SCONCE

INSTALLATION GUIDE

IMPORTANT SAFETY INFORMATION:

Please read all the instructions below before installation.

- ▶ Make sure that the supply voltage corresponds to the rated product voltage.
- ▶ The product must be installed by a qualified electrician in accordance with the National Electrical Code and corresponding local codes.
- ▶ If the product is damaged, do not use it.

⚠ WARNING

RISK OF PERSONAL INJURY – READ and follow all WARNINGS and installation instructions. Keep or give to the owner for future reference.

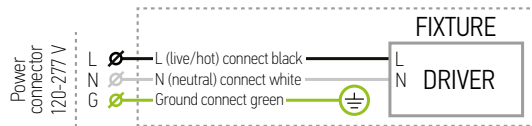
Risk of cuts: Wear gloves to prevent cuts or abrasions when removing from carton, handling, installing, and maintaining this product.

Risk of electric shock: This product must be installed in accordance with the applicable installation code by a person familiar with the construction and operation of the product and the hazards involved.

Risk of Fire: Minimum 194°F supply conductors. Consult a qualified electrician to ensure correct branch circuit conductor.

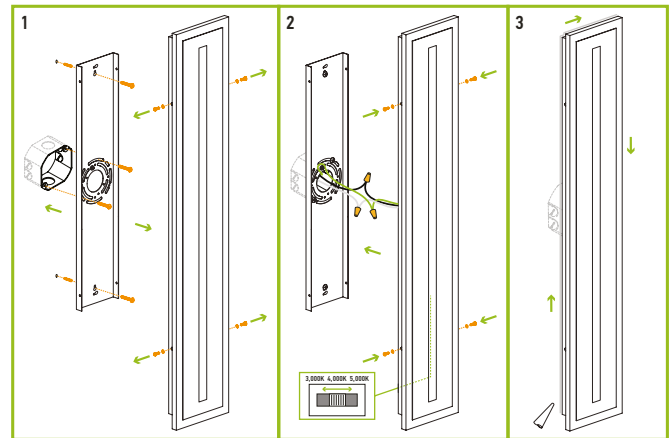
ASD® assumes no responsibility for claims arising out of improper or careless installation or handling of this product.

ELECTRICAL SCHEMATIC DIAGRAM:



INSTALLATION STEPS:

1. Unscrew the four fixture screws from both sides and remove the mounting plate. The fixture can be installed on standard 2.75" or 3.5" outlet box. Attach the mounting plate to the outlet box and mark the location of the holes, drill two holes for anchors, insert anchors into the holes, twist the two self-tapping screws. Attach the mounting plate to the outlet box using two mounting screws and tighten self-tapping screws.
2. Connect the wires: Black to Black, White to White, Ground to Ground. Secure the connection with wire nuts. Choose preferred color temperature by adjusting the switch position. Put the waterproof gasket on each fixture screw. Place the wall sconce on the mounting plate and secure it using four fixture screws.
3. For outdoor locations please use silicone (not included) shown in the picture below.



ORDERING INFORMATION

Model	UPC	Pcs. per carton	Carton size	Carton weight	GTIN 14
ASD-LWS27C-18D18BK	810128114165	2	23.6" x 9.5" x 9.8"	11.5 lbs	10810128114162
ASD-LWS27C-24D24BK	810128114172	2	29.5" x 9.5" x 9.8"	15 lbs	10810128114179
ASD-LWS27C-36D30BK	810128114189	2	41.3" x 9.5" x 9.8"	21.6 lbs	10810128114186
ASD-LWS27C-48D36BK	810128112970	1	52.8" x 8.7" x 4.3"	15.3 lbs	-
ASD-LWS27C-72D40BK	810128114202	1	76.8" x 8.7" x 4.3"	24 lbs	-

For most up-to-date spec sheets please refer to asd-lighting.com