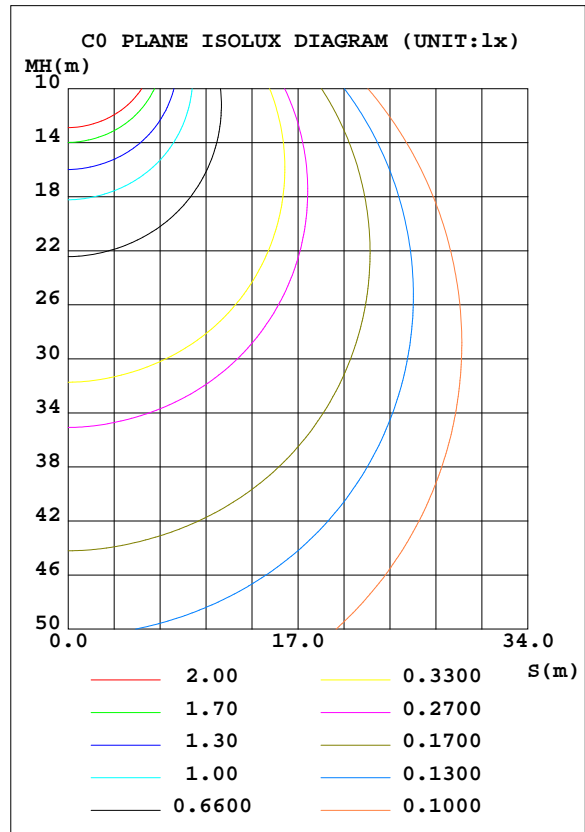
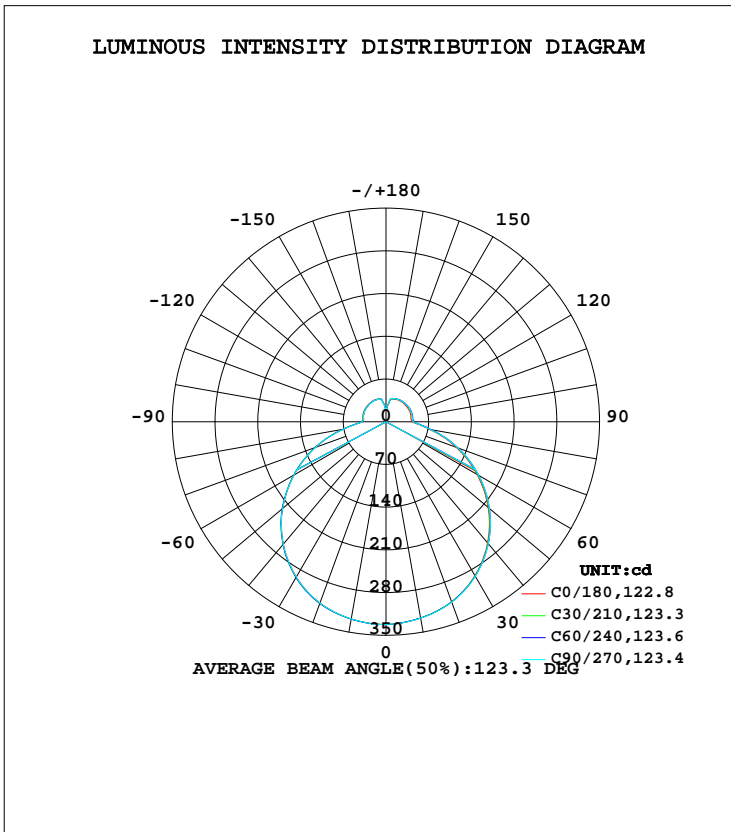


LUMINAIRE PHOTOMETRIC TEST REPORT

Test:U:120.00V I:0.2149A P:24.310W PF:0.9426 Freq:60.00Hz Lamp Flux:1367.41x1 lm		
NAME: LED Ceiling light	TYPE:LED	WEIGHT:
SPEC.:ASD-LFC-LF-14D24-AC-BK 3500K	DIM.:	SERIAL No.:
MFR.: ASD Lighting Corp	SUR.:	Shielding Angle:

DATA OF LAMP		PHOTOMETRIC DATA Eff: 56.25 lm/W			
MODEL	ASD-LFC-LF-14D24-AC-BK	I _{max} (cd)	332.4	S/MH(C0/180)	1.31
NOMINAL POWER(W)	24	LOR(%)	100.0	S/MH(C90/270)	1.31
RATED VOLTAGE(V)	120	TOTAL FLUX(lm)	1367.4	η UP, DN(C0-180)	9.7,40.7
NOMINAL FLUX(lm)	1367.41	CIE CLASS	SEMI-D.	η UP, DN(C180-360)	9.1,40.6
LAMPS INSIDE	1	η up(%)	18.8	CIBSE SHR NOM	1.50
TEST VOLTAGE(V)	120	η down(%)	81.2	CIBSE SHR MAX	1.50



C Range: 0 - 360DEG
 C Interval: 15.0DEG
 Test Speed: HIGH
 Temperature: 25.0DEG
 Operators: Alan Wang
 Test Date: 27 June 2023

γ Range: 0 - 180DEG
 γ Interval: 1.0DEG
 Test System: EVERFINE GO-R5000_V2 SYSTEM V2.00.416
 Humidity: 42.7%
 Test Distance: 2.500m [K=1.0395]
 Remarks:

ZONAL FLUX DIAGRAM

ZONAL FLUX DIAGRAM:

γ	C0	C45	C90	C135	C180	C225	C270	C315	γ	Φ zone	Φ total	%lum,lamp
10	326.7	326.5	326.9	327.4	328.1	328.4	328.0	327.2	0- 10	31.46	31.46	2.3,2.3
20	314.0	314.3	314.7	315.2	316.2	316.9	316.4	315.3	10- 20	91.11	122.6	8.96,8.96
30	291.4	291.9	292.5	292.6	293.9	294.8	293.9	292.6	20- 30	140.9	263.4	19.3,19.3
40	259.0	260.4	260.9	260.6	261.8	262.6	261.9	260.3	30- 40	174.0	437.4	32,32
50	218.5	220.7	221.1	220.0	221.0	222.4	221.2	219.6	40- 50	186.5	623.9	45.6,45.6
60	172.2	174.6	175.2	173.2	173.9	174.6	173.9	172.5	50- 60	176.7	800.7	58.6,58.6
70	122.3	125.2	125.5	123.0	123.2	123.5	123.0	122.1	60- 70	147.4	948.1	69.3,69.3
80	72.76	75.46	75.06	72.31	71.81	71.48	71.04	71.68	70- 80	103.4	1051	76.9,76.9
90	42.68	45.55	44.94	41.80	39.68	38.65	38.88	40.17	80- 90	59.34	1111	81.2,81.2
100	41.60	44.32	43.77	41.01	38.86	37.80	37.63	39.08	90-100	44.32	1155	84.5,84.5
110	42.42	44.74	44.43	42.01	39.88	38.99	38.71	40.03	100-110	43.38	1199	87.6,87.6
120	42.47	44.47	44.28	42.35	40.27	39.55	39.29	40.43	110-120	41.28	1240	90.7,90.7
130	41.99	43.86	43.64	41.99	40.44	39.56	39.46	40.44	120-130	37.29	1277	93.4,93.4
140	41.86	43.20	42.95	41.60	40.54	39.96	39.95	40.81	130-140	32.03	1309	95.7,95.7
150	40.91	42.17	41.86	40.88	40.60	39.99	40.06	40.49	140-150	25.87	1335	97.6,97.6
160	39.40	40.02	40.66	40.18	39.98	39.25	39.09	39.68	150-160	18.68	1354	99,99
170	33.25	34.13	34.79	34.84	34.77	34.23	33.56	33.65	160-170	11.03	1365	99.8,99.8
180	21.38	21.37	21.10	21.55	21.81	21.88	21.73	21.45	170-180	2.702	1367	100,100
DEG	LUMINOUS INTENSITY:cd									UNIT:lm		

Conical surface Flux(90deg): 530.5 lm

%lum = 38.8%

%lamp = 38.8%

Conical surface Flux(120deg): 800.67 lm

%lum = 58.6%

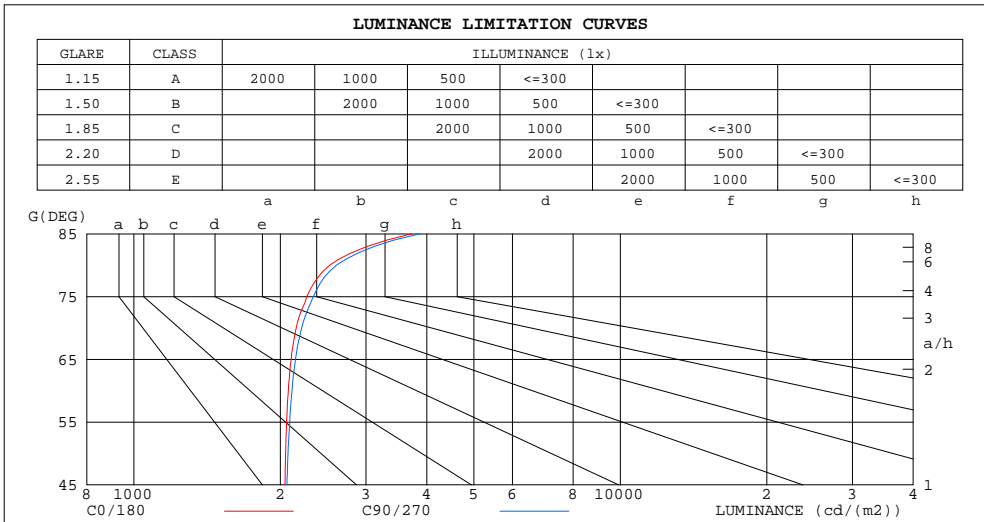
%lamp = 58.6%

C Range: 0 - 360DEG
 C Interval: 15.0DEG
 Test Speed: HIGH
 Temperature: 25.0DEG
 Operators: Alan Wang
 Test Date: 27 June 2023

γ Range: 0 - 180DEG
 γ Interval: 1.0DEG
 Test System: EVERFINE GO-R5000_V2 SYSTEM V2.00.416
 Humidity: 42.7%
 Test Distance: 2.500m [K=1.0395]
 Remarks:

LUMINANCE LIMITATION CURVES

Test:U:120.00V I:0.2149A P:24.310W PF:0.9426 Freq:60.00Hz Lamp Flux:1367.41x1 lm		
NAME: LED Ceiling light	TYPE:LED	WEIGHT:
SPEC.:ASD-LFC-LF-14D24-AC-BK 3500K	DIM.:	SERIAL No.:
MFR.: ASD Lighting Corp	SUR.:	Shielding Angle:



LUMINANCE cd/(m2)		
G(DEG)	C0/180	C90/270
85	3725	3869
80	2527	2607
75	2266	2339
70	2157	2213
65	2106	2147
60	2078	2114
55	2061	2091
50	2050	2075
45	2044	2063

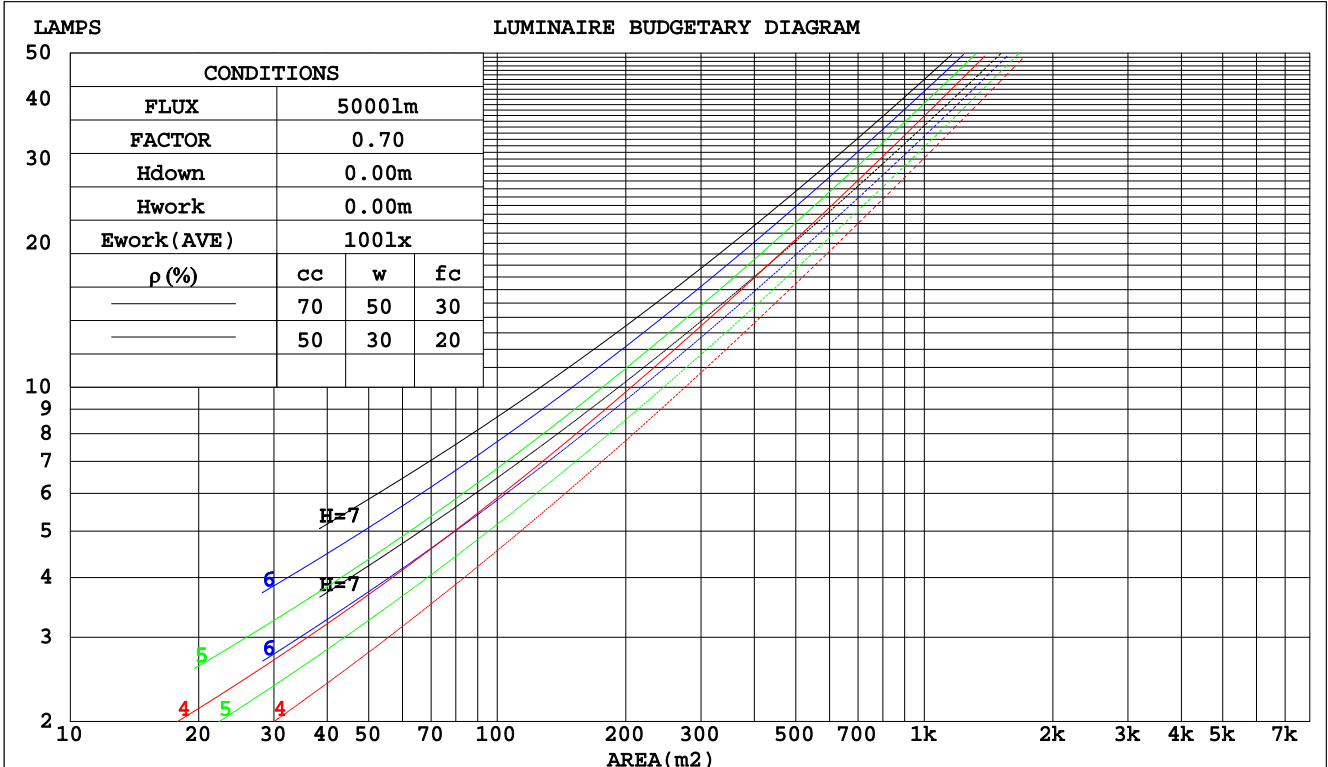
C Range: 0 - 360DEG
 C Interval: 15.0DEG
 Test Speed: HIGH
 Temperature: 25.0DEG
 Operators: Alan Wang
 Test Date: 27 June 2023

γ Range: 0 - 180DEG
 γ Interval: 1.0DEG
 Test System: EVERFINE GO-R5000_V2 SYSTEM V2.00.416
 Humidity: 42.7%
 Test Distance: 2.500m [K=1.0395]
 Remarks:

CU AND LUMINAIRE BUDGETARY ESTIMATE DIAGRAM

Test:U:120.00V I:0.2149A P:24.310W PF:0.9426 Freq:60.00Hz Lamp Flux:1367.41x1 lm		
NAME: LED Ceiling light	TYPE:LED	WEIGHT:
SPEC.:ASD-LFC-LF-14D24-AC-BK 3500K	DIM.:	SERIAL No.:
MFR.:ASD Lighting Corp	SUR.:	Shielding Angle:

pcc	80%			70%			50%			30%			10%			0
	50%	30%	10%	50%	30%	10%	50%	30%	10%	50%	30%	10%	50%	30%	10%	0
pw																
pfc	20%			20%			20%			20%			20%			0
RCR	RCR:Room Cavity Ratio						Coefficients of Utilization(CU)									
0.0	1.15	1.15	1.15	1.10	1.10	1.10	1.01	1.01	1.01	.92	.92	.92	.85	.85	.85	.81
1.0	.98	.93	.89	.94	.89	.85	.86	.82	.79	.79	.76	.74	.72	.70	.68	.65
2.0	.84	.77	.71	.81	.74	.69	.74	.69	.64	.68	.64	.60	.62	.59	.56	.53
3.0	.74	.65	.58	.70	.63	.57	.65	.58	.53	.60	.54	.50	.55	.50	.47	.44
4.0	.65	.56	.49	.62	.54	.47	.57	.50	.45	.53	.47	.42	.48	.44	.40	.37
5.0	.58	.48	.42	.55	.47	.41	.51	.44	.38	.47	.41	.36	.43	.38	.34	.32
6.0	.52	.43	.36	.50	.41	.35	.46	.39	.33	.42	.36	.32	.39	.34	.30	.27
7.0	.47	.38	.32	.45	.37	.31	.42	.35	.29	.39	.32	.28	.36	.30	.26	.24
8.0	.42	.34	.28	.41	.33	.27	.38	.31	.26	.35	.29	.25	.33	.27	.24	.21
9.0	.39	.31	.25	.37	.30	.24	.35	.28	.23	.32	.27	.22	.30	.25	.21	.19
10.0	.36	.28	.22	.34	.27	.22	.32	.26	.21	.30	.24	.20	.28	.23	.19	.17



C Range: 0 - 360DEG
 C Interval: 15.0DEG
 Test Speed: HIGH
 Temperature: 25.0DEG
 Operators: Alan Wang
 Test Date: 27 June 2023

γ Range: 0 - 180DEG
 γ Interval: 1.0DEG
 Test System: EVERFINE GO-R5000_V2 SYSTEM V2.00.416
 Humidity: 42.7%
 Test Distance: 2.500m [K=1.0395]
 Remarks:

WEC AND CCEC

Test:U:120.00V I:0.2149A P:24.310W PF:0.9426 Freq:60.00Hz Lamp Flux:1367.41x1 lm		
NAME: LED Ceiling light	TYPE:LED	WEIGHT:
SPEC.:ASD-LFC-LF-14D24-AC-BK 3500K	DIM.:	SERIAL No.:
MFR.: ASD Lighting Corp	SUR.:	Shielding Angle:

ρcc	80%			70%			50%			30%			10%			0
ρw	50%	30%	10%	50%	30%	10%	50%	30%	10%	50%	30%	10%	50%	30%	10%	0
ρfc	20%			20%			20%			20%			20%			0
RCR	RCR:Room Cavity Ratio						Wall Exitance Coefficients(WEC)									
0.0																
1.0	.342	.194	.062	.329	.187	.060	.305	.175	.056	.283	.163	.052	.262	.152	.049	
2.0	.307	.168	.052	.296	.163	.050	.274	.152	.047	.254	.142	.045	.235	.133	.042	
3.0	.278	.148	.044	.268	.143	.043	.248	.135	.041	.230	.126	.039	.213	.118	.037	
4.0	.254	.132	.039	.244	.128	.038	.226	.120	.036	.210	.113	.034	.194	.106	.032	
5.0	.233	.119	.034	.224	.115	.033	.208	.108	.032	.193	.102	.030	.179	.095	.029	
6.0	.214	.108	.031	.207	.104	.030	.192	.098	.029	.178	.093	.027	.165	.087	.026	
7.0	.199	.098	.028	.192	.095	.027	.178	.090	.026	.165	.085	.025	.153	.080	.023	
8.0	.185	.090	.025	.178	.088	.025	.166	.083	.024	.154	.078	.023	.143	.074	.021	
9.0	.173	.084	.023	.167	.081	.023	.155	.077	.022	.145	.072	.021	.134	.068	.020	
10.0	.162	.078	.022	.157	.076	.021	.146	.072	.020	.136	.068	.019	.127	.064	.018	

ρcc	80%			70%			50%			30%			10%			0
ρw	50%	30%	10%	50%	30%	10%	50%	30%	10%	50%	30%	10%	50%	30%	10%	0
ρfc	20%			20%			20%			20%			20%			0
RCR	RCR:Room Cavity Ratio						Ceiling Cavity Exitance Coefficients(CCEC)									
0.0	.333	.333	.333	.285	.285	.285	.195	.195	.195	.112	.112	.112	.036	.036	.036	
1.0	.327	.300	.276	.279	.257	.238	.191	.177	.164	.110	.103	.096	.035	.033	.031	
2.0	.319	.277	.241	.274	.238	.209	.187	.165	.145	.108	.096	.085	.035	.031	.028	
3.0	.312	.260	.219	.267	.225	.190	.184	.156	.133	.106	.091	.079	.034	.030	.026	
4.0	.304	.248	.204	.261	.214	.177	.180	.149	.125	.104	.087	.074	.033	.028	.024	
5.0	.297	.238	.194	.255	.206	.169	.176	.144	.119	.102	.084	.071	.033	.028	.023	
6.0	.290	.230	.187	.249	.199	.162	.172	.139	.115	.100	.082	.068	.032	.027	.023	
7.0	.283	.223	.181	.244	.193	.158	.168	.136	.112	.098	.080	.067	.032	.026	.022	
8.0	.277	.218	.177	.238	.189	.154	.165	.133	.109	.096	.078	.065	.031	.026	.022	
9.0	.271	.213	.174	.233	.185	.152	.162	.130	.108	.094	.077	.064	.030	.025	.021	
10.0	.265	.209	.171	.229	.181	.149	.159	.128	.106	.092	.075	.063	.030	.025	.021	

C Range: 0 - 360DEG
 C Interval: 15.0DEG
 Test Speed: HIGH
 Temperature: 25.0DEG
 Operators: Alan Wang
 Test Date: 27 June 2023

γ Range: 0 - 180DEG
 γ Interval: 1.0DEG
 Test System: EVERFINE GO-R5000_V2 SYSTEM V2.00.416
 Humidity: 42.7%
 Test Distance: 2.500m [K=1.0395]
 Remarks:

UGR(Unified Glare Rating) Table

Test:U:120.00V I:0.2149A P:24.310W PF:0.9426 Freq:60.00Hz Lamp Flux:1367.4lx1 lm										
NAME: LED Ceiling light					TYPE:LED			WEIGHT:		
SPEC.:ASD-LFC-LF-14D24-AC-BK 3500K					DIM.:			SERIAL No.:		
MFR.: ASD Lighting Corp					SUR.:			Shielding Angle:		
ceiling/cavity	0.7	0.7	0.5	0.5	0.3	0.7	0.7	0.5	0.5	0.3
walls	0.5	0.3	0.5	0.3	0.3	0.5	0.3	0.5	0.3	0.3
working plane	0.2	0.2	0.2	0.2	0.2	0.2	0.2	0.2	0.2	0.2
Room dimensions	Viewed crosswise					Viewed endwise				
x = 2H y = 2H	14.3	15.6	14.8	16.1	16.7	14.4	15.7	14.9	16.2	16.8
3H	16.2	17.4	16.7	17.9	18.5	16.3	17.5	16.8	18.0	18.6
4H	17.0	18.2	17.6	18.7	19.4	17.2	18.3	17.7	18.9	19.5
6H	17.9	18.9	18.4	19.5	20.2	18.0	19.1	18.6	19.7	20.3
8H	18.3	19.3	18.9	19.9	20.6	18.4	19.5	19.0	20.0	20.7
12H	18.7	19.7	19.3	20.3	21.0	18.9	19.9	19.5	20.5	21.1
4H 2H	15.0	16.1	15.5	16.7	17.3	15.0	16.2	15.6	16.7	17.4
3H	17.0	18.0	17.6	18.6	19.3	17.1	18.1	17.7	18.7	19.4
4H	18.1	19.0	18.7	19.6	20.3	18.2	19.1	18.8	19.7	20.4
6H	19.0	19.8	19.7	20.5	21.2	19.2	20.0	19.8	20.6	21.4
8H	19.5	20.3	20.2	20.9	21.7	19.7	20.4	20.3	21.1	21.8
12H	20.1	20.7	20.7	21.4	22.2	20.2	20.9	20.9	21.6	22.4
8H 4H	18.4	19.2	19.1	19.8	20.6	18.5	19.3	19.2	19.9	20.7
6H	19.6	20.3	20.3	21.0	21.8	19.8	20.4	20.5	21.1	21.9
8H	20.3	20.8	21.0	21.6	22.4	20.4	21.0	21.1	21.7	22.5
12H	21.0	21.5	21.8	22.2	23.1	21.2	21.7	21.9	22.4	23.2
12H 4H	18.5	19.2	19.2	19.9	20.6	18.6	19.3	19.3	19.9	20.7
6H	19.8	20.3	20.5	21.1	21.9	19.9	20.5	20.6	21.2	22.0
8H	20.5	21.0	21.3	21.7	22.6	20.6	21.1	21.4	21.9	22.7
Variations with the observer position at spacings:										
S = 1.0H	+ 0.1 / - 0.1					+ 0.1 / - 0.1				
1.5H	+ 0.2 / - 0.3					+ 0.2 / - 0.3				
2.0H	+ 0.2 / - 0.4					+ 0.2 / - 0.4				

CIE Pub.117, 1367 lm Total Lamp Luminous Flux Corrected (8log(F/F0) = 1.1)
 Area: 0.165812 m2

C Range: 0 - 360DEG
 C Interval: 15.0DEG
 Test Speed: HIGH
 Temperature: 25.0DEG
 Operators: Alan Wang
 Test Date: 27 June 2023

γ Range: 0 - 180DEG
 γ Interval: 1.0DEG
 Test System: EVERFINE GO-R5000_V2 SYSTEM V2.00.416
 Humidity: 42.7%
 Test Distance: 2.500m [K=1.0395]
 Remarks:

UTILIZATION FACTORS TABLE

Test:U:120.00V I:0.2149A P:24.310W PF:0.9426 Freq:60.00Hz Lamp Flux:1367.41x1 lm		
NAME: LED Ceiling light	TYPE:LED	WEIGHT:
SPEC.:ASD-LFC-LF-14D24-AC-BK 3500K	DIM.:	SERIAL No.:
MFR.: ASD Lighting Corp	SUR.:	Shielding Angle:

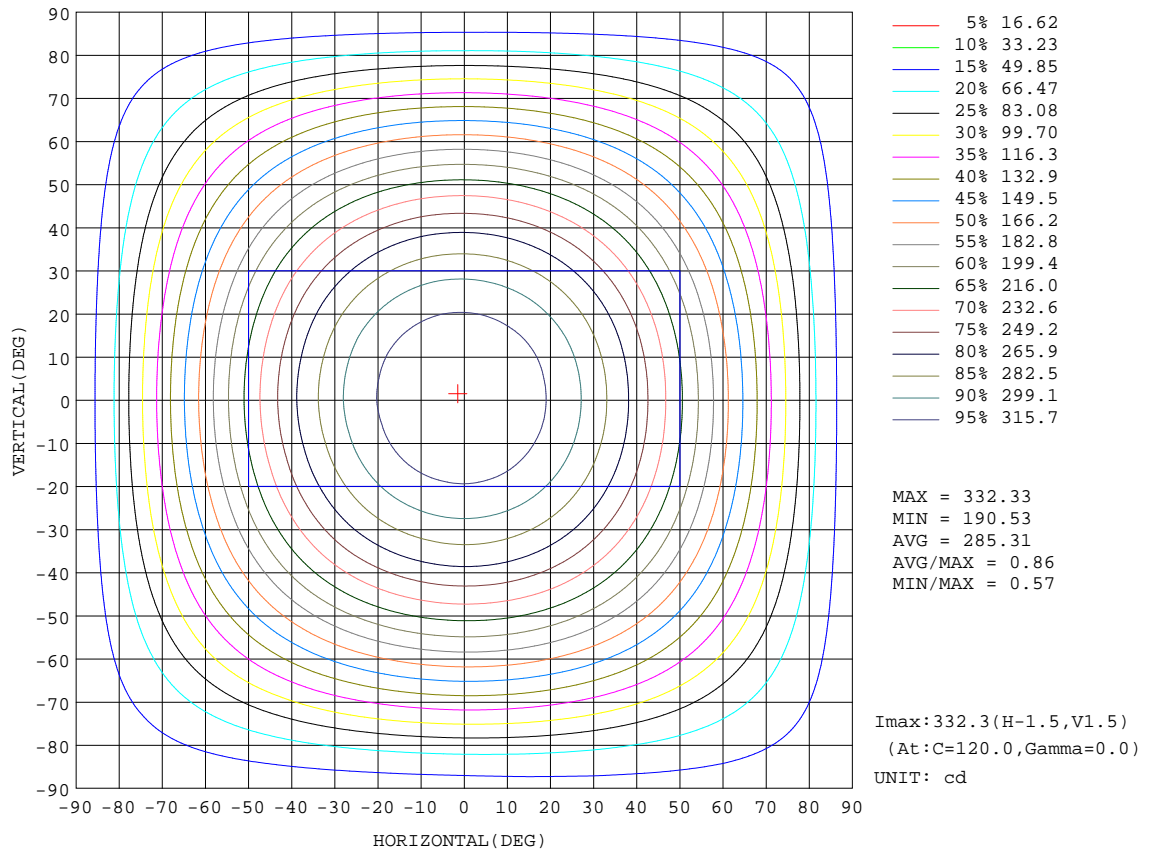
REFLECTANCE										
Ceiling	0.8	0.8	0.8	0.7	0.7	0.7	0.5	0.5	0.5	0
Walls	0.7	0.5	0.3	0.7	0.5	0.3	0.7	0.5	0.3	0
Working plane	0.2	0.2	0.2	0.2	0.2	0.2	0.2	0.2	0.2	0
ROOM INDEX	UTILIZATION FACTORS(PERCENT) $k(RI) \times RCR = 5$									
k = 0.60	50	38	31	48	37	30	46	36	30	23
0.80	59	47	39	58	46	39	54	44	38	30
1.00	67	55	47	65	54	46	61	54	45	36
1.25	74	62	55	72	61	54	67	58	52	42
1.50	79	68	60	77	66	59	71	63	57	46
2.00	87	77	69	83	74	67	77	70	64	52
2.50	91	82	75	87	79	73	81	74	69	56
3.00	94	86	80	91	83	77	84	78	73	59
4.00	99	92	86	95	89	83	88	83	78	64
5.00	102	96	91	97	92	88	90	86	82	67
ROOM INDEX	UF(total)									Direct
According to DIN EN 13032-2 2004			Suspended				SHRNOM = 1.25			

C Range: 0 - 360DEG
 C Interval: 15.0DEG
 Test Speed: HIGH
 Temperature: 25.0DEG
 Operators: Alan Wang
 Test Date: 27 June 2023

γ Range: 0 - 180DEG
 γ Interval: 1.0DEG
 Test System: EVERFINE GO-R5000_V2 SYSTEM V2.00.416
 Humidity: 42.7%
 Test Distance: 2.500m [K=1.0395]
 Remarks:

ISOCANDELA DIAGRAM

Test:U:120.00V I:0.2149A P:24.310W PF:0.9426 Freq:60.00Hz Lamp Flux:1367.4lx1 lm		
NAME: LED Ceiling light	TYPE:LED	WEIGHT:
SPEC.:ASD-LFC-LF-14D24-AC-BK 3500K	DIM.:	SERIAL No.:
MFR.:ASD Lighting Corp	SUR.:	Shielding Angle:

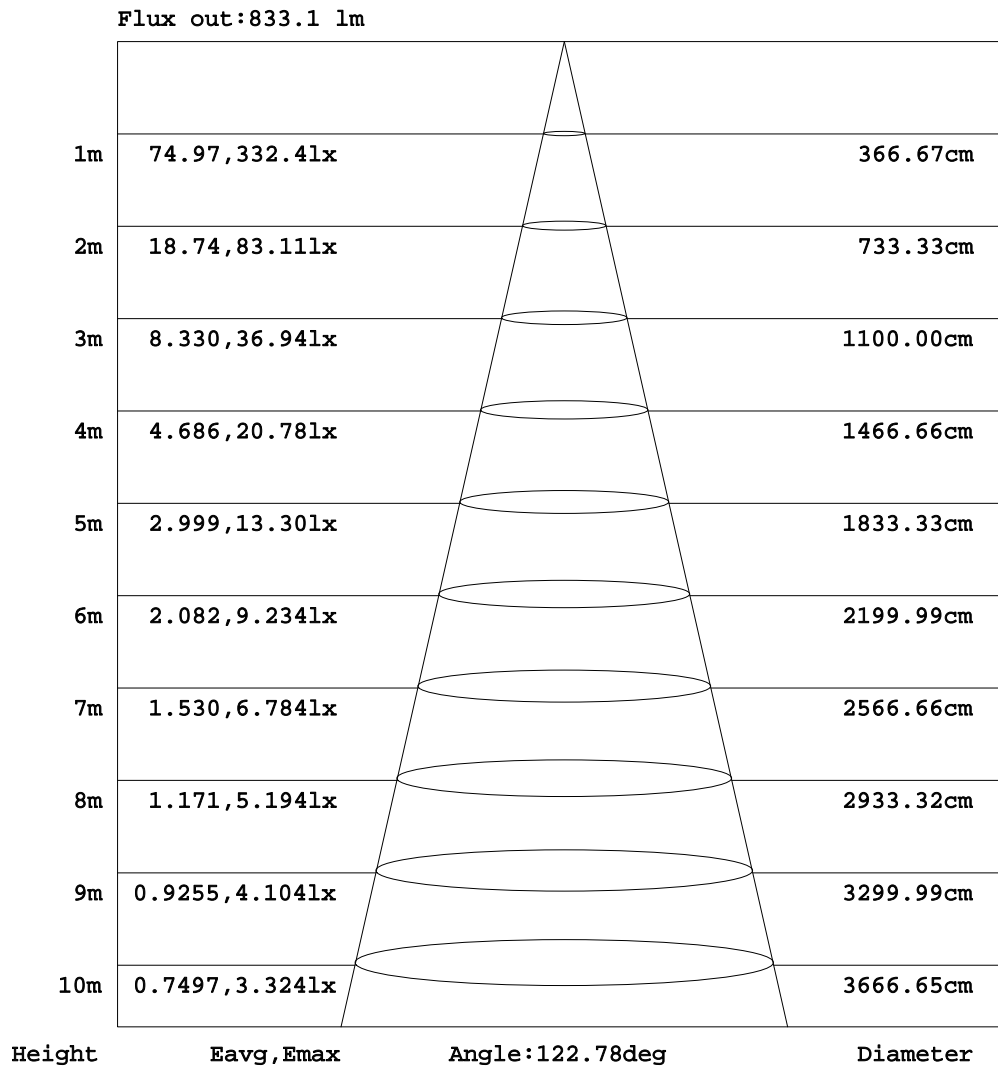


C Range: 0 - 360DEG
 C Interval: 15.0DEG
 Test Speed: HIGH
 Temperature: 25.0DEG
 Operators: Alan Wang
 Test Date: 27 June 2023

γ Range: 0 - 180DEG
 γ Interval: 1.0DEG
 Test System: EVERFINE GO-R5000_V2 SYSTEM V2.00.416
 Humidity: 42.7%
 Test Distance: 2.500m [K=1.0395]
 Remarks:

AAI Figure

Test:U:120.00V I:0.2149A P:24.310W PF:0.9426 Freq:60.00Hz Lamp Flux:1367.41x1 lm		
NAME: LED Ceiling light	TYPE:LED	WEIGHT:
SPEC.:ASD-LFC-LF-14D24-AC-BK 3500K	DIM.:	SERIAL No.:
MFR.:ASD Lighting Corp	SUR.:	Shielding Angle:



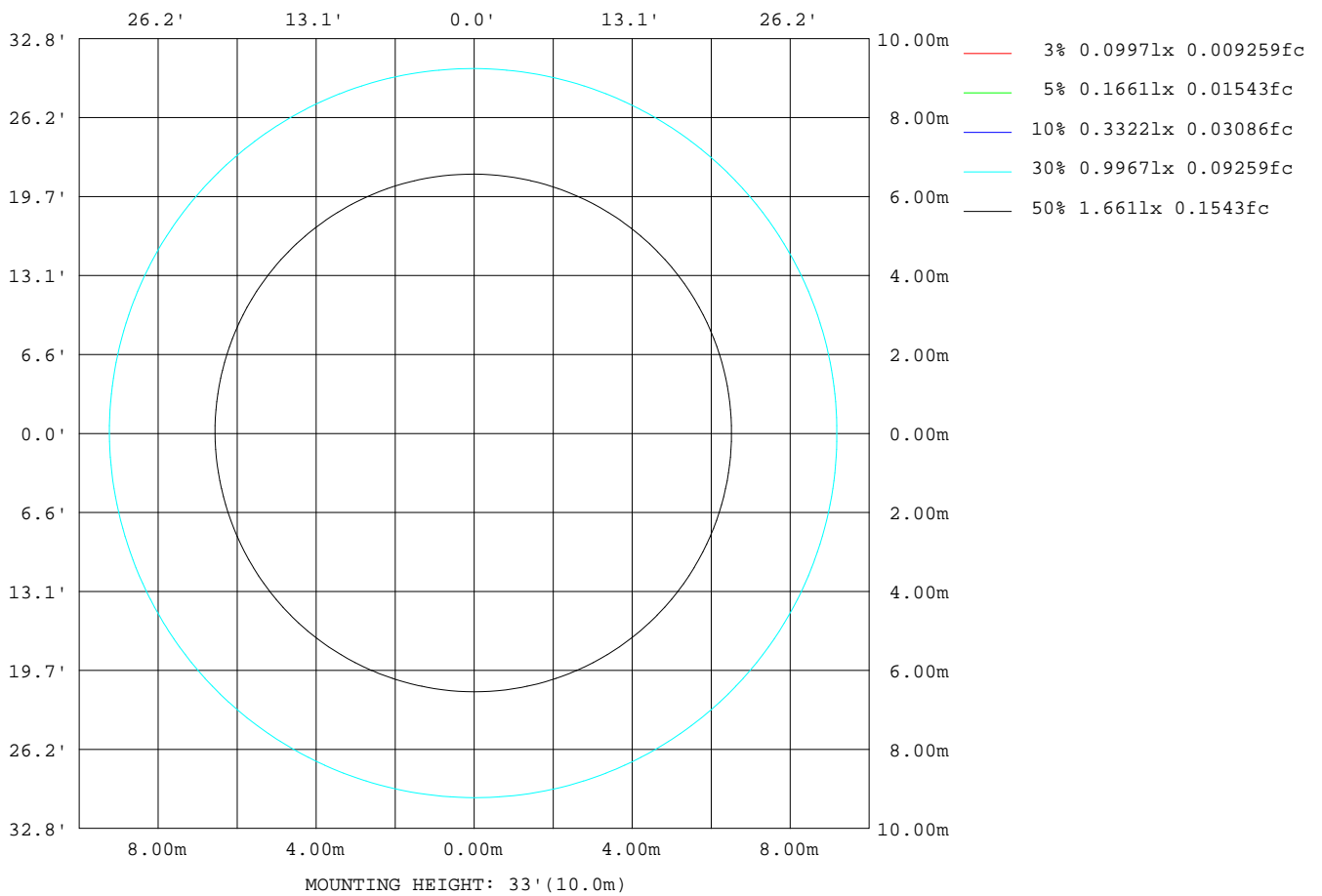
Note:The Curves indicate the illuminated area and the average illumination when the luminaire is at different distance.

C Range: 0 - 360DEG
 C Interval: 15.0DEG
 Test Speed: HIGH
 Temperature: 25.0DEG
 Operators: Alan Wang
 Test Date: 27 June 2023

γ Range: 0 - 180DEG
 γ Interval: 1.0DEG
 Test System: EVERFINE GO-R5000_V2 SYSTEM V2.00.416
 Humidity: 42.7%
 Test Distance: 2.500m [K=1.0395]
 Remarks:

ISOLUX DIAGRAM

Test:U:120.00V I:0.2149A P:24.310W PF:0.9426 Freq:60.00Hz Lamp Flux:1367.41x1 lm		
NAME: LED Ceiling light	TYPE:LED	WEIGHT:
SPEC.:ASD-LFC-LF-14D24-AC-BK 3500K	DIM.:	SERIAL No.:
MFR.: ASD Lighting Corp	SUR.:	Shielding Angle:



C Range: 0 - 360DEG
C Interval: 15.0DEG
Test Speed: HIGH
Temperature: 25.0DEG
Operators: Alan Wang
Test Date: 27 June 2023

γ Range: 0 - 180DEG
γ Interval: 1.0DEG
Test System: EVERFINE GO-R5000_V2 SYSTEM V2.00.416
Humidity: 42.7%
Test Distance: 2.500m [K=1.0395]
Remarks:

LED Avg.L Report

Test:U:120.00V I:0.2149A P:24.310W PF:0.9426 Freq:60.00Hz Lamp Flux:1367.4lx1 lm		
NAME: LED Ceiling light	TYPE:LED	WEIGHT:
SPEC.:ASD-LFC-LF-14D24-AC-BK 3500K	DIM.:	SERIAL No.:
MFR.: ASD Lighting Corp	SUR.:	Shielding Angle:

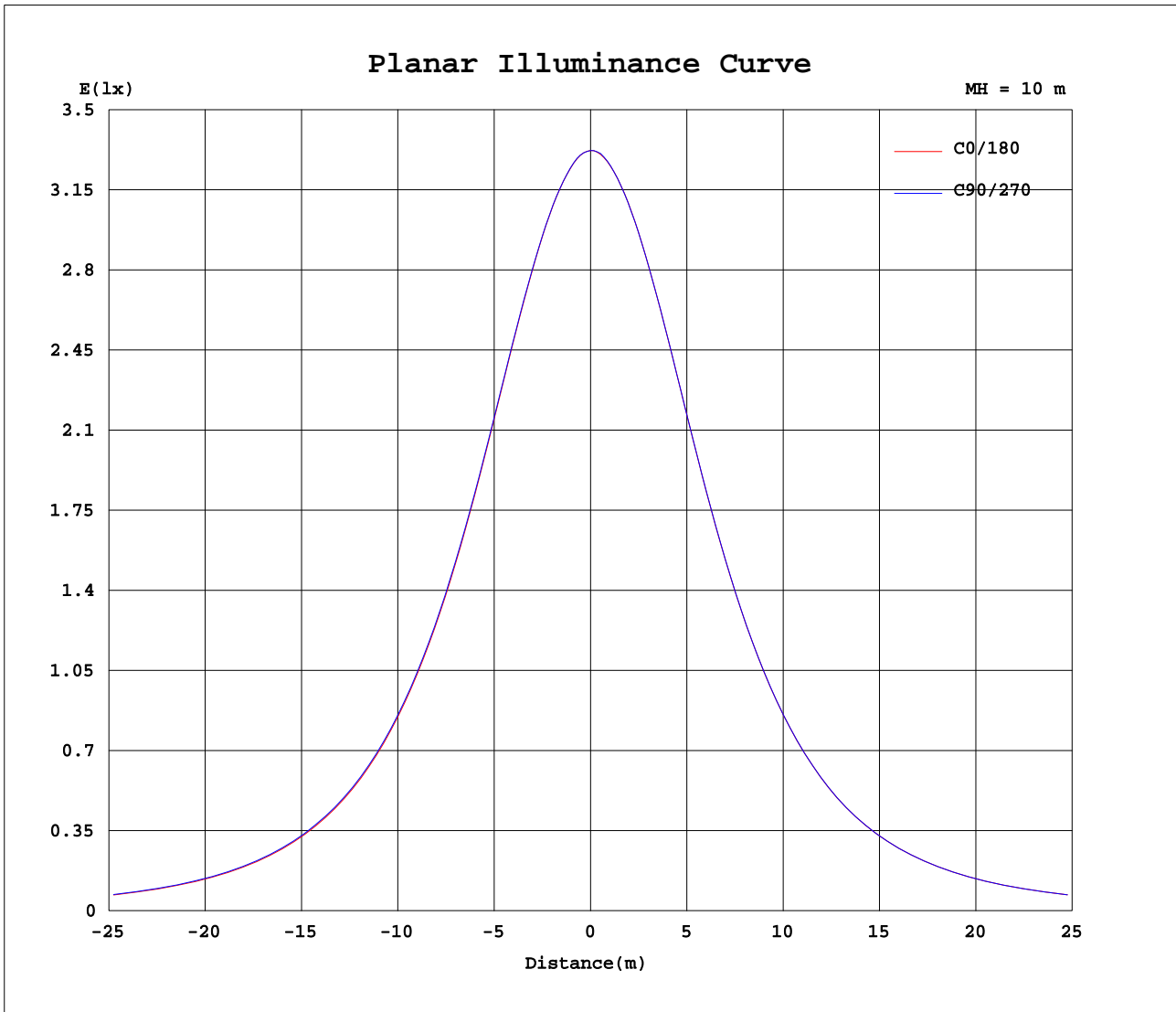
AvgL	cd/m2
L_0~180(65)av	2116
L_0~180(75)av	2271
L_0~180(85)av	3662
L_90~270(65)av	2135
L_90~270(75)av	2302
L_90~270(85)av	3694
L_45(65)av	2124
L_45(75)av	2281
L_45(85)av	3687

Standard: GB/T 29293-2012

C Range: 0 - 360DEG
C Interval: 15.0DEG
Test Speed: HIGH
Temperature: 25.0DEG
Operators: Alan Wang
Test Date: 27 June 2023

γ Range: 0 - 180DEG
 γ Interval: 1.0DEG
Test System: EVERFINE GO-R5000_V2 SYSTEM V2.00.416
Humidity: 42.7%
Test Distance: 2.500m [K=1.0395]
Remarks:

Planar Illuminance Curve



C Range: 0 - 360DEG
 C Interval: 15.0DEG
 Test Speed: HIGH
 Temperature: 25.0DEG
 Operators: Alan Wang
 Test Date: 27 June 2023

γ Range: 0 - 180DEG
 γ Interval: 1.0DEG
 Test System: EVERFINE GO-R5000_V2 SYSTEM V2.00.416
 Humidity: 42.7%
 Test Distance: 2.500m [K=1.0395]
 Remarks:

LUMINOUS DISTRIBUTION INTENSITY DATA

Test:U:120.00V I:0.2149A P:24.310W PF:0.9426 Freq:60.00Hz Lamp Flux:1367.4lx1 lm		
NAME: LED Ceiling light	TYPE:LED	WEIGHT:
SPEC.:ASD-LFC-LF-14D24-AC-BK 3500K	DIM.:	SERIAL No.:
MFR.: ASD Lighting Corp	SUR.:	Shielding Angle:

Table--1

UNIT: cd

C(DEG) γ (DEG)	0	15	30	45	60	75	90	105	120	135	150	165	180	195	210	225	240	255	270
0	332	332	332	332	332	332	332	332	332	332	332	332	332	332	332	332	332	332	332
5	330	330	330	330	330	330	331	330	331	331	331	331	331	331	331	332	331	331	331
10	327	326	327	326	327	327	327	327	327	327	328	328	328	328	328	328	328	328	328
15	321	321	321	321	322	322	322	322	322	322	323	323	323	324	324	324	324	324	323
20	314	314	314	314	314	314	315	315	315	315	315	316	316	316	317	317	317	317	316
25	304	304	304	304	305	305	305	305	305	305	305	306	306	307	307	307	307	307	307
30	291	291	292	292	292	292	292	292	292	293	293	293	294	294	295	295	295	295	294
35	276	276	277	277	278	278	278	278	278	278	278	278	279	279	280	280	280	280	279
40	259	259	260	260	261	261	261	261	261	261	260	260	262	262	263	263	263	262	262
45	240	240	241	242	242	242	242	242	241	241	241	241	242	243	243	243	243	243	243
50	219	219	220	221	221	221	221	221	220	220	220	220	221	221	222	222	222	222	221
55	196	197	197	198	199	199	199	198	198	197	197	197	198	198	199	199	198	198	198
60	172	173	174	175	175	176	175	174	174	173	173	173	174	174	175	175	174	174	174
65	148	148	149	150	151	151	150	150	149	148	148	148	149	149	149	149	149	149	149
70	122	123	124	125	126	126	126	125	124	123	123	122	123	123	123	123	123	123	123
75	97.2	98.5	99.2	100	101	101	100	99.5	98.7	97.2	97.3	96.8	97.7	97.8	97.6	97.4	97.1	97.2	97.2
80	72.8	73.7	74.7	75.5	75.8	75.7	75.1	74.1	73.1	72.3	71.7	71.3	71.8	71.7	71.6	71.5	71.3	71.2	71.0
85	53.8	54.9	56.0	56.6	56.8	56.6	55.9	54.9	53.9	53.0	52.4	51.7	52.0	51.8	51.6	51.3	51.0	50.9	50.8
90	42.7	43.8	44.9	45.6	45.9	45.7	44.9	43.9	42.9	41.8	40.8	40.1	39.7	39.2	38.9	38.7	38.6	38.6	38.9
95	41.6	42.6	43.6	44.3	44.6	44.4	43.7	42.7	41.6	40.7	39.8	39.1	38.6	38.2	37.9	37.5	37.3	37.3	37.4
100	41.6	42.6	43.6	44.3	44.6	44.4	43.8	42.9	41.8	41.0	40.1	39.4	38.9	38.5	38.2	37.8	37.6	37.4	37.6
105	42.1	43.1	43.9	44.6	44.8	44.8	44.2	43.4	42.6	41.6	40.7	40.0	39.4	39.2	38.8	38.5	38.2	38.1	38.2
110	42.4	43.3	44.1	44.7	45.0	45.0	44.4	43.7	43.0	42.0	41.1	40.4	39.9	39.7	39.4	39.0	38.7	38.6	38.7
115	42.6	43.3	44.2	44.7	44.9	45.0	44.4	43.8	43.2	42.3	41.4	40.7	40.1	40.0	39.7	39.3	39.1	39.0	39.1
120	42.5	43.2	44.0	44.5	44.7	44.7	44.3	43.7	43.1	42.4	41.6	40.9	40.3	40.1	39.8	39.6	39.3	39.2	39.3
125	42.2	42.9	43.7	44.2	44.4	44.4	44.0	43.5	42.9	42.2	41.6	40.9	40.4	40.2	39.9	39.6	39.4	39.3	39.4
130	42.0	42.6	43.3	43.9	43.9	44.0	43.6	43.2	42.6	42.0	41.4	40.9	40.4	40.0	39.8	39.6	39.4	39.3	39.5
135	41.9	42.4	43.1	43.5	43.6	43.6	43.3	42.9	42.2	41.7	41.2	40.7	40.4	39.9	39.9	39.6	39.6	39.5	39.7
140	41.9	42.3	42.8	43.2	43.3	43.2	42.9	42.8	42.2	41.6	41.2	40.8	40.5	40.1	40.1	40.0	39.9	39.8	39.9
145	41.5	41.8	42.5	42.8	42.9	42.7	42.6	42.3	41.6	41.1	41.1	40.8	40.7	40.3	40.1	40.0	40.0	40.0	40.1
150	40.9	41.2	41.8	42.2	42.2	42.1	41.9	41.6	41.4	40.9	40.4	39.8	40.6	40.3	40.0	40.0	39.9	39.9	40.1
155	40.5	40.7	41.1	41.3	41.5	41.4	41.2	41.0	40.9	40.6	40.2	39.9	40.2	40.1	39.9	39.7	39.5	39.4	39.4
160	39.4	39.6	39.9	40.0	40.4	40.6	40.7	40.5	40.3	40.2	39.9	39.7	40.0	39.8	39.5	39.3	38.9	38.9	39.1
165	38.6	38.7	39.2	39.3	39.7	39.8	39.8	39.6	39.4	39.4	39.4	39.1	39.3	39.2	38.9	38.8	38.5	39.2	39.3
170	33.3	33.5	33.9	34.1	34.5	34.7	34.8	34.9	34.9	34.8	34.7	34.5	34.8	34.8	34.6	34.2	33.8	33.5	33.6
175	24.4	24.7	25.0	25.5	25.9	26.3	26.4	26.4	26.5	26.4	26.2	26.0	26.8	26.9	26.6	26.3	25.9	25.9	25.6
180	21.4	21.4	21.3	21.4	21.1	20.9	21.1	21.5	21.8	21.6	21.4	20.3	21.8	21.9	21.9	21.9	22.0	21.9	21.7

C Range: 0 - 360DEG
 C Interval: 15.0DEG
 Test Speed: HIGH
 Temperature: 25.0DEG
 Operators: Alan Wang
 Test Date: 27 June 2023

γ Range: 0 - 180DEG
 γ Interval: 1.0DEG
 Test System: EVERFINE GO-R5000_V2 SYSTEM V2.00.416
 Humidity: 42.7%
 Test Distance: 2.500m [K=1.0395]
 Remarks:

LUMINOUS DISTRIBUTION INTENSITY DATA

Test:U:120.00V I:0.2149A P:24.310W PF:0.9426 Freq:60.00Hz Lamp Flux:1367.41x1 lm		
NAME: LED Ceiling light	TYPE:LED	WEIGHT:
SPEC.:ASD-LFC-LF-14D24-AC-BK 3500K	DIM.:	SERIAL No.:
MFR.: ASD Lighting Corp	SUR.:	Shielding Angle:

Table--2

UNIT: cd

C(DEG) γ (DEG)	285	300	315	330	345														
0	332	332	332	332	332														
5	331	331	331	331	330														
10	328	328	327	327	327														
15	323	323	322	322	322														
20	316	315	315	315	314														
25	306	306	305	305	305														
30	294	293	293	292	292														
35	279	278	278	277	277														
40	262	261	260	260	260														
45	242	241	241	241	240														
50	221	220	220	219	219														
55	198	197	196	196	196														
60	174	173	173	172	172														
65	149	148	148	147	147														
70	123	123	122	122	122														
75	97.1	96.9	96.8	97.1	97.6														
80	71.3	71.5	71.7	72.0	72.6														
85	51.2	51.7	52.2	52.8	53.5														
90	39.2	39.6	40.2	40.9	41.9														
95	37.8	38.3	39.0	39.8	40.7														
100	37.9	38.4	39.1	39.8	40.7														
105	38.5	39.0	39.6	40.4	41.2														
110	39.0	39.5	40.0	40.8	41.6														
115	39.3	39.8	40.3	41.0	41.8														
120	39.5	39.9	40.4	41.1	41.8														
125	39.6	40.0	40.5	41.0	41.7														
130	39.6	40.0	40.4	40.9	41.5														
135	39.8	40.2	40.6	41.1	41.5														
140	40.1	40.4	40.8	41.2	41.6														
145	40.3	40.5	40.9	41.2	41.5														
150	40.3	40.4	40.5	40.2	40.7														
155	39.4	39.7	39.9	40.1	40.3														
160	39.0	39.4	39.7	39.5	39.5														
165	39.3	39.4	39.2	39.0	38.8														
170	33.5	33.5	33.6	33.7	33.4														
175	25.4	25.3	25.2	25.0	25.0														
180	21.6	21.5	21.4	21.3	21.2														

C Range: 0 - 360DEG
 C Interval: 15.0DEG
 Test Speed: HIGH
 Temperature: 25.0DEG
 Operators: Alan Wang
 Test Date: 27 June 2023

γ Range: 0 - 180DEG
 γ Interval: 1.0DEG
 Test System: EVERFINE GO-R5000_V2 SYSTEM V2.00.416
 Humidity: 42.7%
 Test Distance: 2.500m [K=1.0395]
 Remarks: