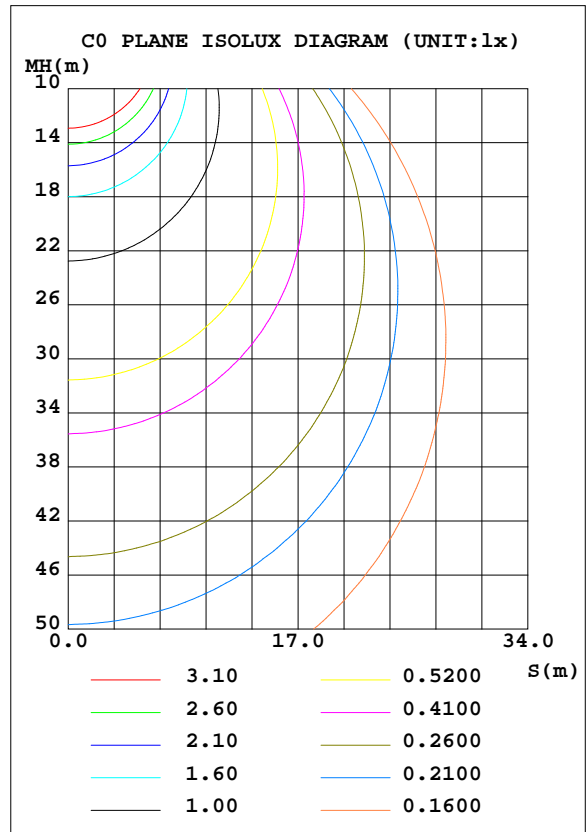
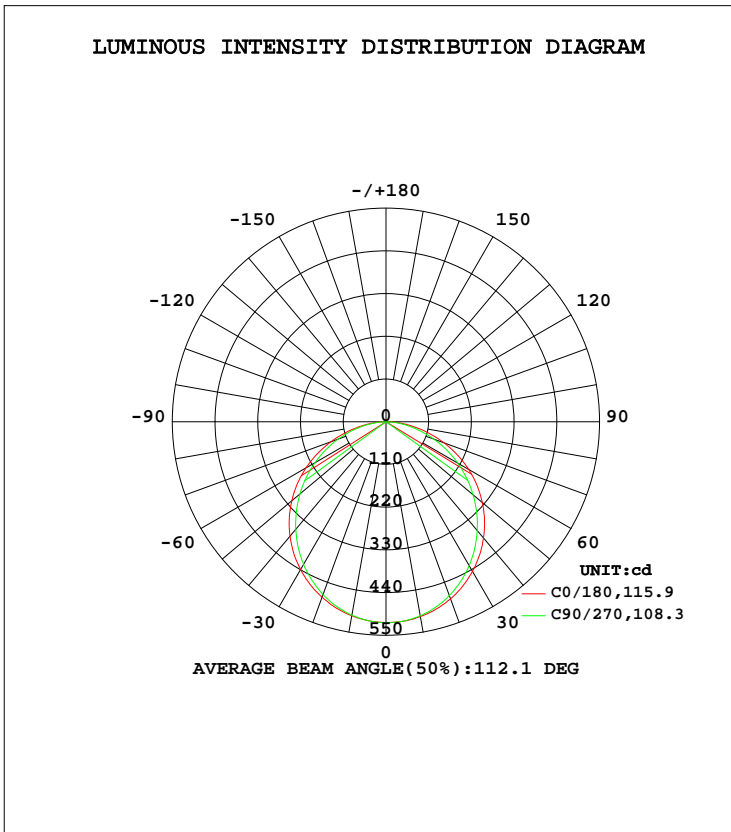


LUMINAIRE PHOTOMETRIC TEST REPORT

Test:U:120.08V I:0.1817A P:20.420W PF:0.9359 Freq:60.00Hz Lamp Flux:1478.04x1 lm		
NAME: ASD-UCS-40D20CC	TYPE: N/A	WEIGHT: N/A
SPEC.: N/A	DIM.: N/A	SERIAL No.: N/A
MFR.: ASD Lighting Corp	SUR.: N/A	Shielding Angle: N/A

DATA OF LAMP		PHOTOMETRIC DATA			
MODEL	ASD-UCS-40D20CC	Imax(cd)	518.1	S/MH(C0/180)	1.28
NOMINAL POWER(W)	20	LOR(%)	100.0	S/MH(C90/270)	1.24
RATED VOLTAGE(V)	120	TOTAL FLUX(lm)	1478.0	η UP, DN(C0-180)	0.1,49.7
NOMINAL FLUX(lm)	1478.04	CIE CLASS	DIRECT	η UP, DN(C180-360)	0.0,50.2
LAMPS INSIDE	1	η up(%)	0.1	CIBSE SHR NOM	1.25
TEST VOLTAGE(V)	120	η down(%)	99.9	CIBSE SHR MAX	1.35



C Range: 0 - 360DEG
 C Interval: 22.5DEG
 Test Speed: HIGH
 Temperature:24.9DEG
 Operators:Water
 Test Date:2023-09-08

γ Range: 0 - 180DEG
 γ Interval: 1.0DEG
 Test System:EVERFINE GO-R5000_V2 SYSTEM V2.00.446
 Humidity:50%
 Test Distance:2.513m [K=1.0000]
 Remarks: Model No: UCL-31B-40G

ZONAL FLUX DIAGRAM

ZONAL FLUX DIAGRAM:

γ	C0	C45	C90	C135	C180	C225	C270	C315	γ	Φ zone	Φ total	%lum, lamp
10	507.2	506.8	506.0	507.4	509.5	509.0	507.1	507.6	0- 10	48.93	48.93	3.31,3.31
20	480.7	477.8	473.5	479.0	485.7	482.9	476.5	478.7	10- 20	139.9	188.8	12.8,12.8
30	439.5	432.6	424.2	433.3	445.2	438.8	428.2	433.5	20- 30	211.4	400.3	27.1,27.1
40	384.7	373.0	361.4	373.9	390.8	379.3	365.7	375.0	30- 40	254.3	654.6	44.3,44.3
50	316.7	302.7	289.2	303.8	324.1	309.0	292.9	305.0	40- 50	263.5	918.1	62.1,62.1
60	237.9	224.3	211.5	225.5	246.1	229.9	213.7	225.7	50- 60	238.5	1157	78.3,78.3
70	150.9	140.9	131.2	142.5	159.3	145.3	130.6	141.3	60- 70	183.1	1340	90.6,90.6
80	64.87	59.85	55.53	62.24	71.78	62.93	54.11	59.78	70- 80	106.8	1447	97.9,97.9
90	3.123	0.0868	0.0804	2.757	2.254	0.0397	0.0287	0.0315	80- 90	29.91	1476	99.9,99.9
100	0.1279	0.1357	0.1351	0.1376	0.0567	0.0584	0.0553	0.0545	90-100	0.1353	1477	99.9,99.9
110	0.1555	0.1605	0.1649	0.1624	0.0904	0.0944	0.0883	0.0861	100-110	0.1149	1477	99.9,99.9
120	0.2086	0.2160	0.2211	0.2190	0.1383	0.1360	0.1274	0.1263	110-120	0.1462	1477	99.9,99.9
130	0.3017	0.3123	0.3312	0.3189	0.1972	0.1926	0.1792	0.1792	120-130	0.1884	1477	99.9,99.9
140	0.4658	0.5156	0.5281	0.5036	0.2498	0.2533	0.2473	0.2468	130-140	0.2368	1477	99.9,99.9
150	0.6431	0.7477	0.7863	0.7247	0.3088	0.3243	0.3339	0.3280	140-150	0.2851	1478	100,100
160	0.8282	0.8860	0.9177	0.8745	0.4329	0.4184	0.4165	0.4198	150-160	0.2728	1478	100,100
170	0.7999	0.8308	0.8312	0.8180	0.5320	0.5028	0.4657	0.4880	160-170	0.1876	1478	100,100
180	0.6979	0.6614	0.6346	0.6780	0.6966	0.6818	0.6390	0.6454	170-180	0.0629	1478	100,100
DEG	LUMINOUS INTENSITY:cd									UNIT:lm		

Conical surface Flux(90deg): 787.34 lm

%lum = 53.3%
 %lamp = 53.3%

Conical surface Flux(120deg): 1156.6 lm

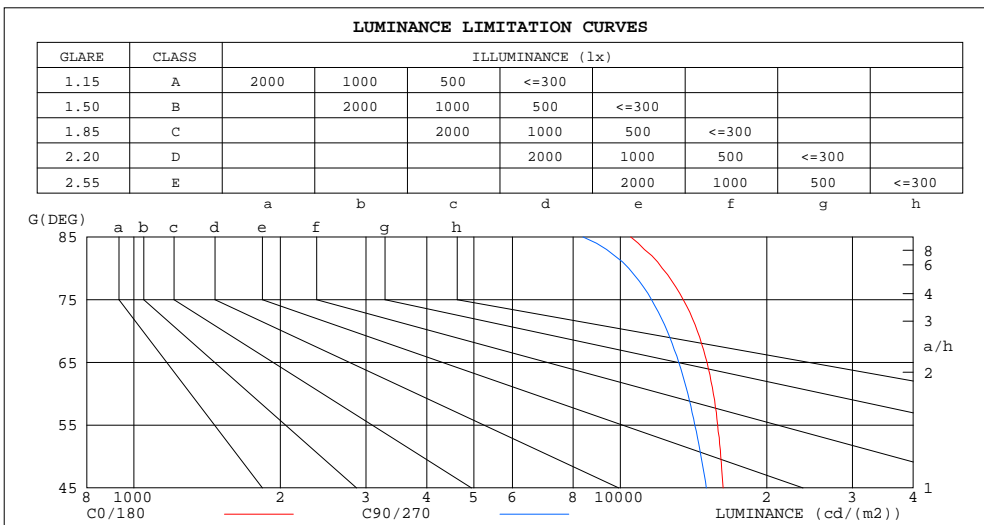
%lum = 78.3%
 %lamp = 78.3%

C Range: 0 - 360DEG
 C Interval: 22.5DEG
 Test Speed: HIGH
 Temperature:24.9DEG
 Operators:Water
 Test Date:2023-09-08

γ Range: 0 - 180DEG
 γ Interval: 1.0DEG
 Test System:EVERFINE GO-R5000_V2 SYSTEM V2.00.446
 Humidity:50%
 Test Distance:2.513m [K=1.0000]
 Remarks: Model No: UCL-31B-40G

LUMINANCE LIMITATION CURVES

Test:U:120.08V I:0.1817A P:20.420W PF:0.9359 Freq:60.00Hz Lamp Flux:1478.04x1 lm		
NAME: ASD-UCS-40D20CC	TYPE: N/A	WEIGHT: N/A
SPEC.: N/A	DIM.: N/A	SERIAL No.: N/A
MFR.: ASD Lighting Corp	SUR.: N/A	Shielding Angle: N/A



LUMINANCE cd/(m2)		
G (DEG)	C0/180	C90/270
85	10508	8385
80	12194	10413
75	13474	11592
70	14397	12487
65	15076	13186
60	15531	13774
55	15858	14226
50	16081	14649
45	16270	15021

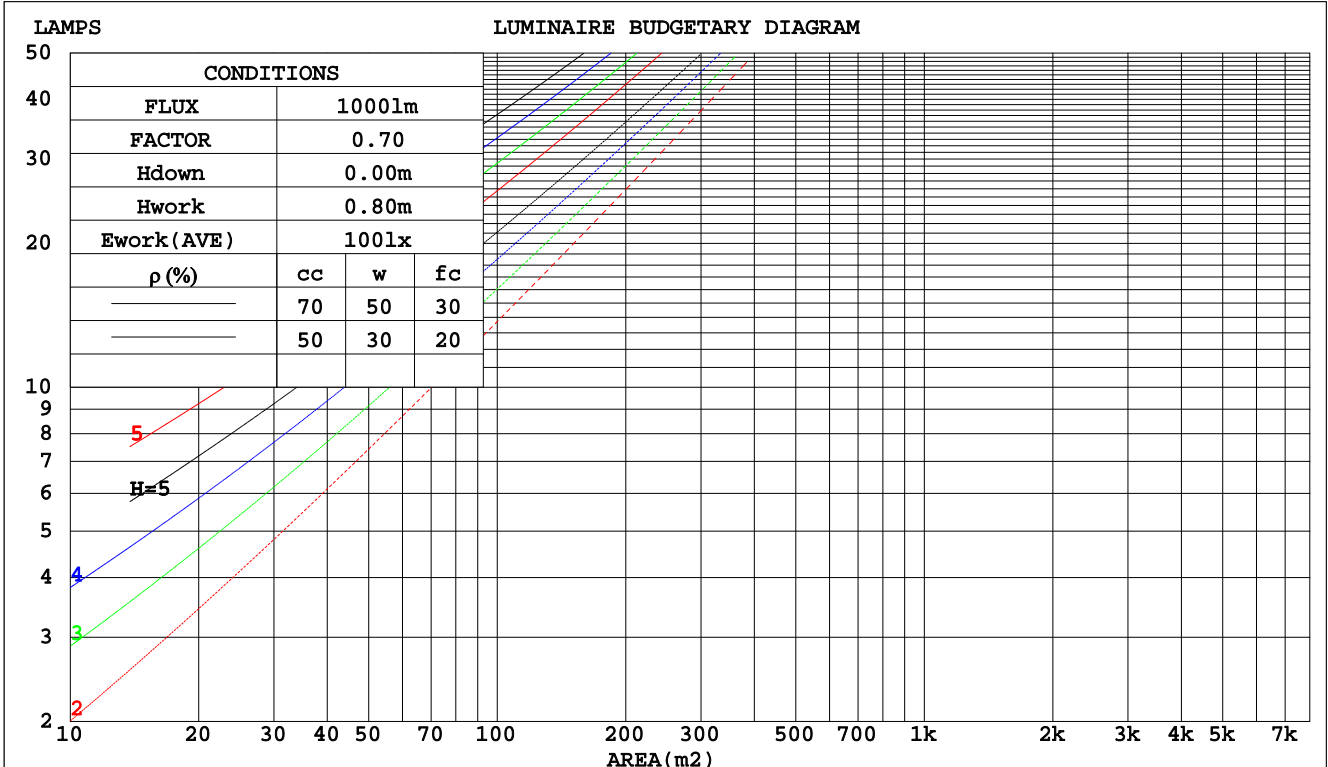
C Range: 0 - 360DEG
 C Interval: 22.5DEG
 Test Speed: HIGH
 Temperature: 24.9DEG
 Operators: Water
 Test Date: 2023-09-08

γ Range: 0 - 180DEG
 γ Interval: 1.0DEG
 Test System: EVERFINE GO-R5000_V2 SYSTEM V2.00.446
 Humidity: 50%
 Test Distance: 2.513m [K=1.0000]
 Remarks: Model No: UCL-31B-40G

CU AND LUMINAIRE BUDGETARY ESTIMATE DIAGRAM

Test:U:120.08V I:0.1817A P:20.420W PF:0.9359 Freq:60.00Hz Lamp Flux:1478.04x1 lm		
NAME: ASD-UCS-40D20CC	TYPE: N/A	WEIGHT: N/A
SPEC.: N/A	DIM.: N/A	SERIAL No.: N/A
MFR.: ASD Lighting Corp	SUR.: N/A	Shielding Angle: N/A

pcc	80%			70%			50%			30%			10%			0
	50%	30%	10%	50%	30%	10%	50%	30%	10%	50%	30%	10%	50%	30%	10%	0
pw																0
pfc	20%			20%			20%			20%			20%			0
RCR	RCR:Room Cavity Ratio Coefficients of Utilization(CU)															
0.0	1.19	1.19	1.19	1.16	1.16	1.16	1.11	1.11	1.11	1.06	1.06	1.06	1.02	1.02	1.02	.00
1.0	1.04	.99	.95	1.01	.97	.94	.97	.94	.91	.93	.91	.88	.90	.87	.85	.83
2.0	.90	.83	.78	.88	.82	.77	.85	.79	.75	.81	.77	.73	.78	.75	.71	.69
3.0	.79	.71	.64	.78	.70	.64	.75	.68	.63	.72	.66	.61	.69	.64	.60	.58
4.0	.70	.61	.54	.69	.60	.54	.66	.59	.53	.64	.58	.52	.62	.56	.52	.50
5.0	.63	.53	.47	.61	.53	.46	.59	.52	.46	.57	.51	.45	.55	.50	.45	.43
6.0	.56	.47	.41	.55	.47	.41	.53	.46	.40	.52	.45	.40	.50	.44	.39	.37
7.0	.51	.42	.36	.50	.42	.36	.49	.41	.36	.47	.40	.35	.46	.40	.35	.33
8.0	.47	.38	.32	.46	.38	.32	.44	.37	.32	.43	.36	.32	.42	.36	.31	.29
9.0	.43	.34	.29	.42	.34	.29	.41	.34	.29	.40	.33	.28	.39	.33	.28	.26
10.0	.39	.31	.26	.39	.31	.26	.38	.31	.26	.37	.30	.26	.36	.30	.26	.24



C Range: 0 - 360DEG
 C Interval: 22.5DEG
 Test Speed: HIGH
 Temperature:24.9DEG
 Operators:Water
 Test Date:2023-09-08

γ Range: 0 - 180DEG
 γ Interval: 1.0DEG
 Test System:EVERFINE GO-R5000_V2 SYSTEM V2.00.446
 Humidity:50%
 Test Distance:2.513m [K=1.0000]
 Remarks: Model No: UCL-31B-40G

WEC AND CCEC

Test:U:120.08V I:0.1817A P:20.420W PF:0.9359 Freq:60.00Hz		
Lamp Flux:1478.04x1 lm		
NAME: ASD-UCS-40D20CC	TYPE: N/A	WEIGHT: N/A
SPEC.: N/A	DIM.: N/A	SERIAL No.: N/A
MFR.: ASD Lighting Corp	SUR.: N/A	Shielding Angle: N/A

ρcc	80%			70%			50%			30%			10%			0
ρw	50%	30%	10%	50%	30%	10%	50%	30%	10%	50%	30%	10%	50%	30%	10%	0
ρfc	20%			20%			20%			20%			20%			0
RCR	RCR:Room Cavity Ratio						Wall Exitance Coefficients(WEC)									
0.0																
1.0	.313	.178	.056	.305	.174	.055	.292	.168	.054	.280	.161	.052	.268	.156	.050	
2.0	.293	.161	.049	.287	.158	.049	.275	.153	.048	.265	.148	.046	.255	.144	.045	
3.0	.271	.144	.043	.266	.142	.043	.255	.138	.042	.246	.135	.041	.237	.131	.041	
4.0	.250	.130	.038	.245	.128	.038	.236	.125	.037	.227	.122	.037	.219	.119	.036	
5.0	.231	.118	.034	.227	.116	.034	.219	.114	.033	.211	.111	.033	.204	.109	.033	
6.0	.214	.107	.031	.210	.106	.031	.203	.104	.030	.196	.102	.030	.190	.100	.030	
7.0	.199	.099	.028	.196	.098	.028	.189	.096	.028	.183	.094	.027	.177	.092	.027	
8.0	.186	.091	.026	.183	.090	.025	.177	.088	.025	.172	.087	.025	.166	.085	.025	
9.0	.174	.084	.024	.172	.084	.023	.166	.082	.023	.161	.081	.023	.157	.080	.023	
10.0	.164	.079	.022	.161	.078	.022	.157	.077	.022	.152	.076	.021	.148	.074	.021	

ρcc	80%			70%			50%			30%			10%			0
ρw	50%	30%	10%	50%	30%	10%	50%	30%	10%	50%	30%	10%	50%	30%	10%	0
ρfc	20%			20%			20%			20%			20%			0
RCR	RCR:Room Cavity Ratio						Ceiling Cavity Exitance Coefficients(CCEC)									
0.0	.191	.191	.191	.164	.164	.164	.112	.112	.112	.064	.064	.064	.020	.020	.020	
1.0	.181	.157	.135	.155	.135	.116	.106	.093	.080	.061	.054	.047	.020	.017	.015	
2.0	.173	.133	.099	.148	.114	.085	.102	.079	.059	.059	.046	.035	.019	.015	.011	
3.0	.166	.115	.075	.142	.099	.065	.097	.069	.046	.056	.040	.027	.018	.013	.009	
4.0	.158	.102	.059	.136	.088	.051	.093	.061	.036	.054	.036	.021	.017	.012	.007	
5.0	.150	.091	.048	.129	.079	.042	.089	.055	.029	.052	.032	.017	.017	.011	.006	
6.0	.143	.083	.040	.123	.072	.035	.085	.050	.025	.049	.030	.015	.016	.010	.005	
7.0	.136	.076	.034	.117	.066	.030	.081	.046	.021	.047	.027	.013	.015	.009	.004	
8.0	.130	.070	.030	.112	.061	.026	.077	.043	.018	.045	.025	.011	.015	.008	.004	
9.0	.124	.065	.026	.107	.057	.023	.074	.040	.016	.043	.024	.010	.014	.008	.003	
10.0	.118	.061	.023	.102	.053	.020	.071	.037	.014	.041	.022	.009	.013	.007	.003	

C Range: 0 - 360DEG
 C Interval: 22.5DEG
 Test Speed: HIGH
 Temperature:24.9DEG
 Operators:Water
 Test Date:2023-09-08

γ Range: 0 - 180DEG
 γ Interval: 1.0DEG
 Test System:EVERFINE GO-R5000_V2 SYSTEM V2.00.446
 Humidity:50%
 Test Distance:2.513m [K=1.0000]
 Remarks: Model No: UCL-31B-40G

UGR(Unified Glare Rating) Table

Test:U:120.08V I:0.1817A P:20.420W PF:0.9359 Freq:60.00Hz Lamp Flux:1478.04x1 lm		
NAME: ASD-UCS-40D20CC	TYPE: N/A	WEIGHT: N/A
SPEC.: N/A	DIM.: N/A	SERIAL No.: N/A
MFR.: ASD Lighting Corp	SUR.: N/A	Shielding Angle: N/A

ceiling/cavity	0.7	0.7	0.5	0.5	0.3	0.7	0.7	0.5	0.5	0.3
walls	0.5	0.3	0.5	0.3	0.3	0.5	0.3	0.5	0.3	0.3
working plane	0.2	0.2	0.2	0.2	0.2	0.2	0.2	0.2	0.2	0.2
Room dimensions	Viewed crosswise					Viewed endwise				
x = 2H y = 2H	21.1	22.7	21.4	22.9	23.1	20.6	22.1	20.9	22.4	22.6
3H	22.7	24.2	23.0	24.4	24.6	22.1	23.5	22.4	23.7	24.0
4H	23.4	24.7	23.7	25.0	25.2	22.7	24.0	23.0	24.3	24.5
6H	23.9	25.1	24.2	25.4	25.7	23.1	24.4	23.4	24.6	24.9
8H	24.0	25.2	24.3	25.5	25.8	23.2	24.5	23.6	24.7	25.0
12H	24.1	25.3	24.4	25.6	25.9	23.3	24.5	23.7	24.8	25.1
4H 2H	21.7	23.0	22.0	23.3	23.6	21.3	22.6	21.6	22.9	23.2
3H	23.5	24.7	23.8	25.0	25.3	23.0	24.1	23.3	24.4	24.7
4H	24.3	25.3	24.6	25.7	26.0	23.7	24.7	24.0	25.1	25.4
6H	24.9	25.8	25.3	26.2	26.5	24.2	25.2	24.6	25.5	25.9
8H	25.1	26.0	25.5	26.3	26.7	24.4	25.3	24.8	25.6	26.0
12H	25.2	26.0	25.6	26.4	26.8	24.5	25.3	24.9	25.7	26.1
8H 4H	24.5	25.4	24.9	25.8	26.2	24.0	24.9	24.4	25.2	25.6
6H	25.3	26.0	25.7	26.4	26.8	24.7	25.4	25.1	25.8	26.2
8H	25.6	26.2	26.0	26.6	27.1	24.9	25.6	25.4	26.0	26.5
12H	25.8	26.3	26.3	26.8	27.3	25.1	25.7	25.6	26.1	26.6
12H 4H	24.5	25.3	24.9	25.7	26.1	24.0	24.8	24.4	25.2	25.6
6H	25.3	26.0	25.8	26.4	26.8	24.7	25.4	25.2	25.8	26.3
8H	25.6	26.2	26.1	26.7	27.1	25.0	25.6	25.5	26.0	26.5
Variations with the observer position at spacings(CIE Pub.117):										
S = 1.0H	+ 0.1 / - 0.2					+ 0.2 / - 0.2				
1.5H	+ 0.2 / - 0.3					+ 0.2 / - 0.3				
2.0H	+ 0.2 / - 0.3					+ 0.2 / - 0.3				

CIE Pub.117, 1478 lm Total Lamp Luminous Flux Correct (8log(F/F0) = 1.4)
Area: 0.03069 m2

C Range: 0 - 360DEG
C Interval: 22.5DEG
Test Speed: HIGH
Temperature:24.9DEG
Operators:Water
Test Date:2023-09-08

γ Range: 0 - 180DEG
γ Interval: 1.0DEG
Test System:EVERFINE GO-R5000_V2 SYSTEM V2.00.446
Humidity:50%
Test Distance:2.513m [K=1.0000]
Remarks: Model No: UCL-31B-40G

UTILIZATION FACTORS TABLE

Test:U:120.08V I:0.1817A P:20.420W PF:0.9359 Freq:60.00Hz Lamp Flux:1478.04x1 lm		
NAME: ASD-UCS-40D20CC	TYPE: N/A	WEIGHT: N/A
SPEC.: N/A	DIM.: N/A	SERIAL No.: N/A
MFR.: ASD Lighting Corp	SUR.: N/A	Shielding Angle: N/A

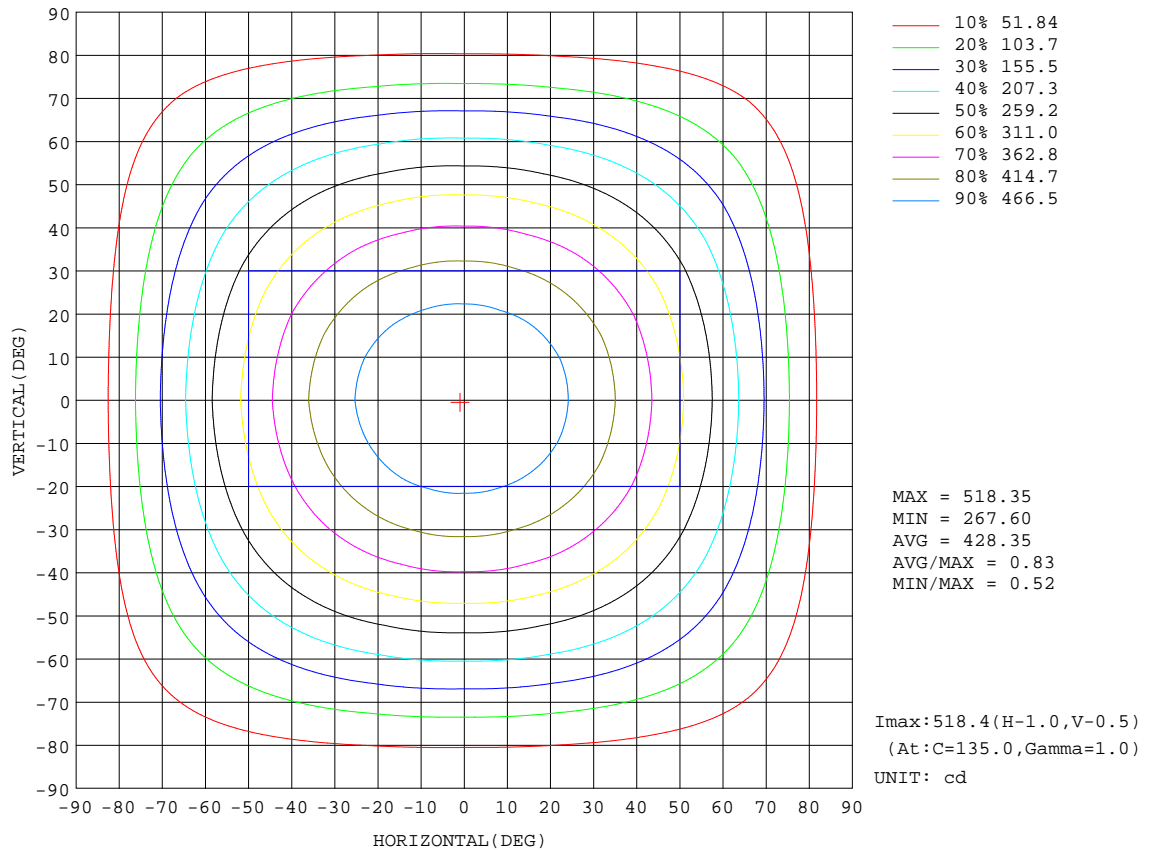
REFLECTANCE										
Ceiling	0.8	0.8	0.8	0.7	0.7	0.7	0.5	0.5	0.5	0
Walls	0.7	0.5	0.3	0.7	0.5	0.3	0.7	0.5	0.3	0
Working plane	0.2	0.2	0.2	0.2	0.2	0.2	0.2	0.2	0.2	0
ROOM INDEX	UTILIZATION FACTORS(PERCENT) k(RI) x RCR = 5									
k = 0.60	57	46	39	57	45	39	55	45	38	32
0.80	67	56	48	66	55	48	65	54	48	41
1.00	76	65	57	75	64	57	72	65	56	49
1.25	83	72	65	81	72	65	79	70	64	57
1.50	88	78	71	86	77	70	83	75	69	62
2.00	95	86	80	93	85	79	89	83	77	69
2.50	99	91	85	97	89	84	93	87	82	74
3.00	102	95	90	100	94	88	96	91	86	78
4.00	106	100	96	104	99	94	99	95	92	83
5.00	109	104	100	106	102	98	102	98	95	86
ROOM INDEX	UF(total)									Direct
According to DIN EN 13032-2 2004			Suspended				SHRNOM = 1.25			

C Range: 0 - 360DEG
 C Interval: 22.5DEG
 Test Speed: HIGH
 Temperature:24.9DEG
 Operators:Water
 Test Date:2023-09-08

γ Range: 0 - 180DEG
 γ Interval: 1.0DEG
 Test System:EVERFINE GO-R5000_V2 SYSTEM V2.00.446
 Humidity:50%
 Test Distance:2.513m [K=1.0000]
 Remarks: Model No: UCL-31B-40G

ISOCANDELA DIAGRAM

Test:U:120.08V I:0.1817A P:20.420W PF:0.9359 Freq:60.00Hz Lamp Flux:1478.04x1 lm		
NAME: ASD-UCS-40D20CC	TYPE: N/A	WEIGHT: N/A
SPEC.: N/A	DIM.: N/A	SERIAL No.: N/A
MFR.: ASD Lighting Corp	SUR.: N/A	Shielding Angle: N/A



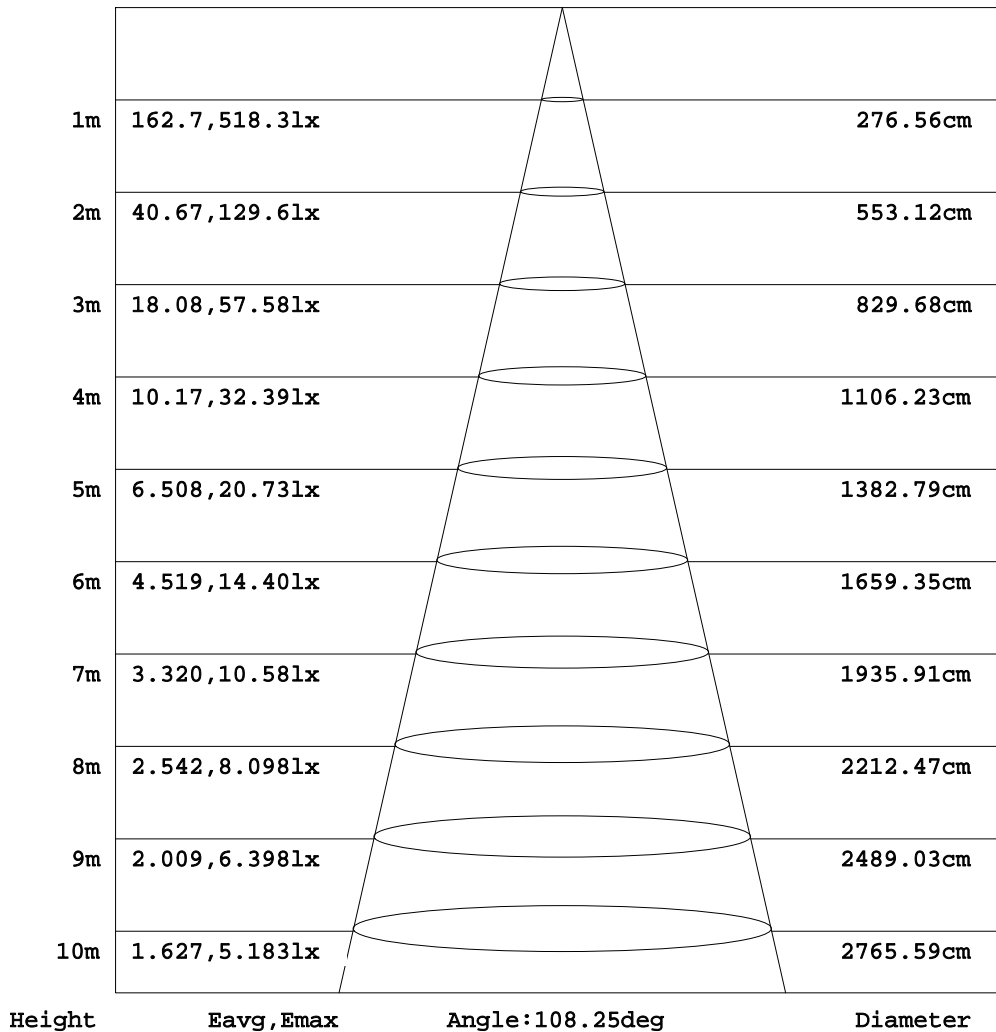
C Range: 0 - 360DEG
 C Interval: 22.5DEG
 Test Speed: HIGH
 Temperature:24.9DEG
 Operators:Water
 Test Date:2023-09-08

γ Range: 0 - 180DEG
 γ Interval: 1.0DEG
 Test System:EVERFINE GO-R5000_V2 SYSTEM V2.00.446
 Humidity:50%
 Test Distance:2.513m [K=1.0000]
 Remarks: Model No: UCL-31B-40G

AAI Figure

Test:U:120.08V I:0.1817A P:20.420W PF:0.9359 Freq:60.00Hz Lamp Flux:1478.04x1 lm		
NAME: ASD-UCS-40D20CC	TYPE: N/A	WEIGHT: N/A
SPEC.: N/A	DIM.: N/A	SERIAL No.: N/A
MFR.: ASD Lighting Corp	SUR.: N/A	Shielding Angle: N/A

Flux out:1043 lm



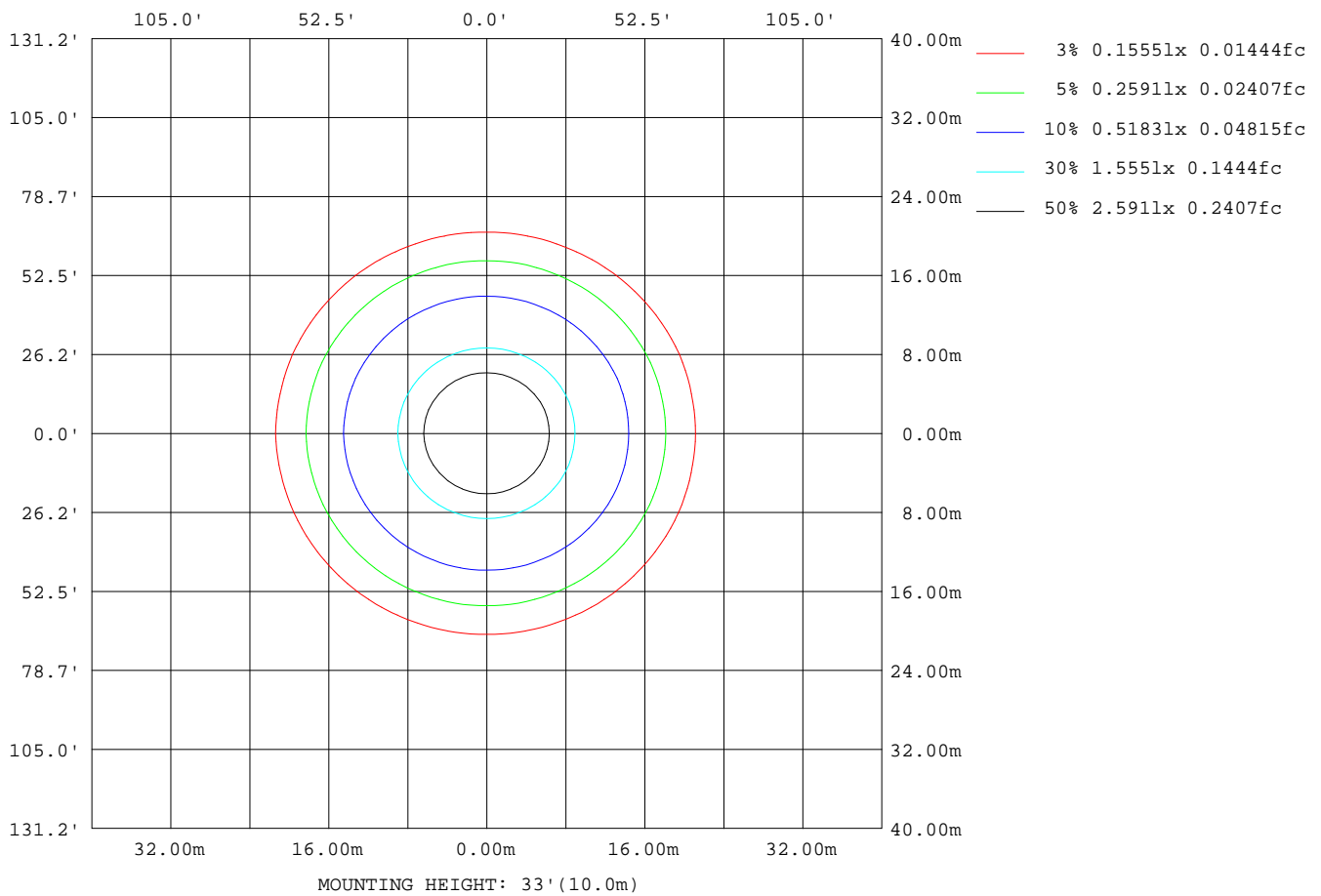
Note: The Curves indicate the illuminated area and the average illumination when the luminaire is at different distance.

C Range: 0 - 360DEG
 C Interval: 22.5DEG
 Test Speed: HIGH
 Temperature: 24.9DEG
 Operators: Water
 Test Date: 2023-09-08

γ Range: 0 - 180DEG
 γ Interval: 1.0DEG
 Test System: EVERFINE GO-R5000_V2 SYSTEM V2.00.446
 Humidity: 50%
 Test Distance: 2.513m [K=1.0000]
 Remarks: Model No: UCL-31B-40G

ISOLUX DIAGRAM

Test:U:120.08V I:0.1817A P:20.420W PF:0.9359 Freq:60.00Hz Lamp Flux:1478.04x1 lm		
NAME: ASD-UCS-40D20CC	TYPE: N/A	WEIGHT: N/A
SPEC.: N/A	DIM.: N/A	SERIAL No.: N/A
MFR.: ASD Lighting Corp	SUR.: N/A	Shielding Angle: N/A



C Range: 0 - 360DEG
 C Interval: 22.5DEG
 Test Speed: HIGH
 Temperature:24.9DEG
 Operators:Water
 Test Date:2023-09-08

γ Range: 0 - 180DEG
 γ Interval: 1.0DEG
 Test System:EVERFINE GO-R5000_V2 SYSTEM V2.00.446
 Humidity:50%
 Test Distance:2.513m [K=1.0000]
 Remarks: Model No: UCL-31B-40G

LED Avg.L Report

Test:U:120.08V I:0.1817A P:20.420W PF:0.9359 Freq:60.00Hz Lamp Flux:1478.04x1 lm		
NAME: ASD-UCS-40D20CC	TYPE: N/A	WEIGHT: N/A
SPEC.: N/A	DIM.: N/A	SERIAL No.: N/A
MFR.: ASD Lighting Corp	SUR.: N/A	Shielding Angle: N/A

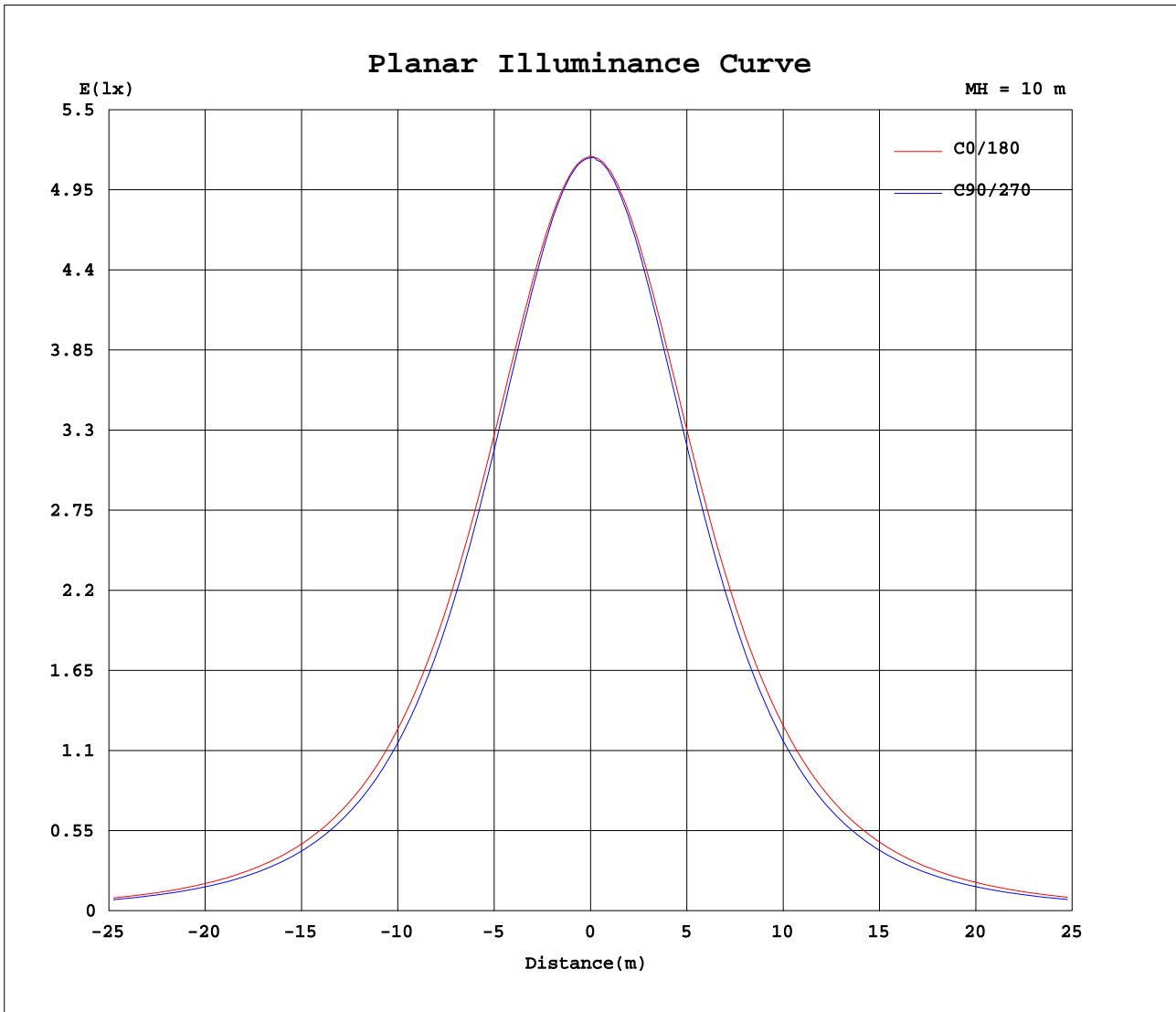
AvgL	cd/m2
L_0~180(65)av	15373
L_0~180(75)av	13913
L_0~180(85)av	11599
L_90~270(65)av	13246
L_90~270(75)av	11546
L_90~270(85)av	8045
L_45(65)av	14236
L_45(75)av	12670
L_45(85)av	9635

Standard: GB/T 29293-2012

C Range: 0 - 360DEG
 C Interval: 22.5DEG
 Test Speed: HIGH
 Temperature:24.9DEG
 Operators:Water
 Test Date:2023-09-08

γ Range: 0 - 180DEG
 γ Interval: 1.0DEG
 Test System:EVERFINE GO-R5000_V2 SYSTEM V2.00.446
 Humidity:50%
 Test Distance:2.513m [K=1.0000]
 Remarks: Model No: UCL-31B-40G

Planar Illuminance Curve



C Range: 0 - 360DEG
 C Interval: 22.5DEG
 Test Speed: HIGH
 Temperature: 24.9DEG
 Operators: Water
 Test Date: 2023-09-08

γ Range: 0 - 180DEG
 γ Interval: 1.0DEG
 Test System: EVERFINE GO-R5000_V2 SYSTEM V2.00.446
 Humidity: 50%
 Test Distance: 2.513m [K=1.0000]
 Remarks: Model No: UCL-31B-40G

LUMINOUS DISTRIBUTION INTENSITY DATA

Test:U:120.08V I:0.1817A P:20.420W PF:0.9359 Freq:60.00Hz Lamp Flux:1478.04x1 lm		
NAME: ASD-UCS-40D20CC	TYPE: N/A	WEIGHT: N/A
SPEC.: N/A	DIM.: N/A	SERIAL No.: N/A
MFR.: ASD Lighting Corp	SUR.: N/A	Shielding Angle: N/A

Table--1

UNIT: cd

C(DEG) γ (DEG)	0	22.5	45	67.5	90	112.5	135	157.5	180	202.5	225	247.5	270	292.5	315	337.5			
0	517	517	517	517	517	517	517	517	517	517	517	517	517	517	517	517			
5	514	515	515	515	514	515	516	516	515	516	515	515	515	515	516	516			
10	507	507	507	506	506	506	507	508	509	510	509	508	507	507	508	508			
15	497	496	495	493	492	494	496	498	499	500	498	496	495	494	496	497			
20	481	480	478	475	474	475	479	482	486	486	483	479	477	476	479	482			
25	462	461	457	452	451	453	459	463	467	466	462	457	454	455	458	462			
30	440	438	433	426	424	427	433	440	445	444	439	432	428	429	434	439			
35	414	411	404	398	394	397	405	414	420	418	410	402	398	400	406	413			
40	385	381	373	365	361	365	374	384	391	388	379	370	366	368	375	383			
45	352	349	340	330	326	330	340	351	359	355	345	335	330	333	341	351			
50	317	313	303	293	289	293	304	315	324	320	309	298	293	296	305	315			
55	279	274	264	255	251	255	266	277	286	282	270	259	254	257	266	277			
60	238	234	224	215	211	215	225	237	246	241	230	219	214	216	226	236			
65	195	191	183	174	171	175	184	195	204	199	188	177	172	175	184	194			
70	151	148	141	134	131	134	143	152	159	155	145	135	131	133	141	150			
75	107	105	99.3	94.1	92.1	94.8	101	108	114	111	103	94.9	91.3	92.9	99.0	106			
80	64.9	63.8	59.9	56.8	55.5	57.7	62.2	67.0	71.8	69.0	62.9	57.0	54.1	55.4	59.8	65.1			
85	28.1	27.5	25.2	23.1	22.4	23.9	26.9	30.0	34.0	31.8	26.5	22.6	20.6	21.3	24.5	28.8			
90	3.12	2.88	0.09	0.08	0.08	0.09	2.76	3.50	2.25	0.63	0.04	0.03	0.03	0.03	0.03	0.07			
95	0.11	0.13	0.13	0.10	0.10	0.10	0.13	0.13	0.04	0.04	0.04	0.04	0.04	0.04	0.04	0.04			
100	0.13	0.13	0.14	0.13	0.14	0.14	0.14	0.13	0.06	0.05	0.06	0.06	0.06	0.06	0.05	0.05			
105	0.14	0.14	0.15	0.14	0.15	0.15	0.15	0.14	0.07	0.07	0.08	0.07	0.07	0.07	0.07	0.07			
110	0.16	0.16	0.16	0.16	0.16	0.16	0.16	0.16	0.09	0.09	0.09	0.09	0.09	0.09	0.09	0.09			
115	0.18	0.18	0.19	0.18	0.19	0.19	0.19	0.18	0.11	0.11	0.11	0.11	0.11	0.11	0.10	0.11			
120	0.21	0.22	0.22	0.22	0.22	0.22	0.22	0.22	0.14	0.14	0.14	0.13	0.13	0.12	0.13	0.13			
125	0.25	0.26	0.26	0.26	0.27	0.27	0.26	0.26	0.17	0.17	0.17	0.16	0.15	0.15	0.16	0.16			
130	0.30	0.31	0.31	0.32	0.33	0.33	0.32	0.31	0.20	0.19	0.19	0.19	0.18	0.18	0.18	0.19			
135	0.37	0.38	0.39	0.40	0.41	0.41	0.39	0.37	0.23	0.22	0.22	0.22	0.22	0.22	0.21	0.22			
140	0.47	0.49	0.52	0.52	0.53	0.53	0.50	0.47	0.25	0.25	0.25	0.25	0.25	0.25	0.25	0.25			
145	0.58	0.59	0.65	0.67	0.68	0.67	0.63	0.57	0.28	0.28	0.29	0.30	0.30	0.30	0.29	0.29			
150	0.64	0.69	0.75	0.78	0.79	0.79	0.72	0.66	0.31	0.30	0.32	0.32	0.33	0.33	0.33	0.33			
155	0.75	0.80	0.84	0.87	0.89	0.87	0.82	0.77	0.36	0.34	0.37	0.37	0.36	0.38	0.37	0.39			
160	0.83	0.86	0.89	0.93	0.92	0.92	0.87	0.83	0.43	0.42	0.42	0.41	0.42	0.42	0.42	0.45			
165	0.83	0.86	0.88	0.90	0.92	0.89	0.87	0.84	0.48	0.47	0.45	0.45	0.44	0.45	0.45	0.48			
170	0.80	0.81	0.83	0.83	0.83	0.82	0.82	0.81	0.53	0.53	0.50	0.48	0.47	0.46	0.49	0.52			
175	0.77	0.78	0.78	0.76	0.75	0.75	0.77	0.78	0.60	0.60	0.58	0.55	0.53	0.51	0.55	0.59			
180	0.70	0.68	0.66	0.64	0.63	0.64	0.68	0.70	0.70	0.70	0.68	0.66	0.64	0.63	0.65	0.68			

C Range: 0 - 360DEG
 C Interval: 22.5DEG
 Test Speed: HIGH
 Temperature:24.9DEG
 Operators:Water
 Test Date:2023-09-08

γ Range: 0 - 180DEG
 γ Interval: 1.0DEG
 Test System:EVERFINE GO-R5000_V2 SYSTEM V2.00.446
 Humidity:50%
 Test Distance:2.513m [K=1.0000]
 Remarks: Model No: UCL-31B-40G