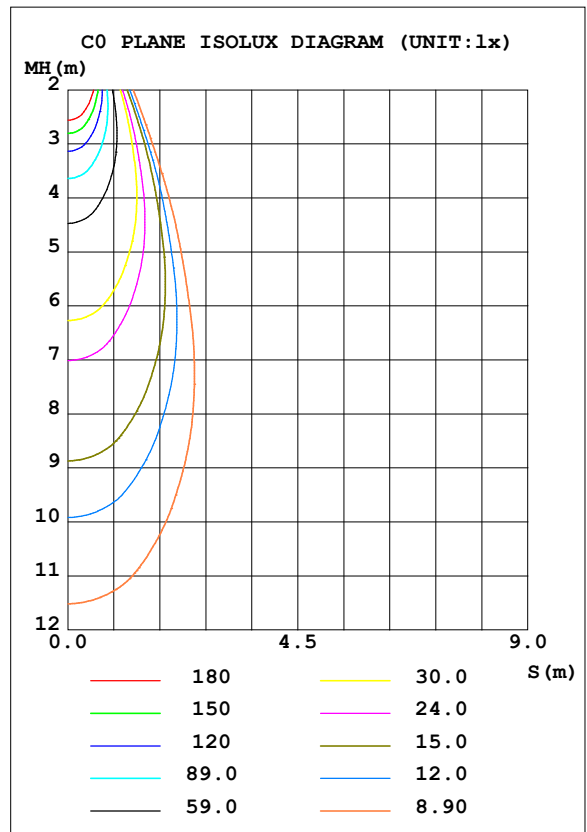
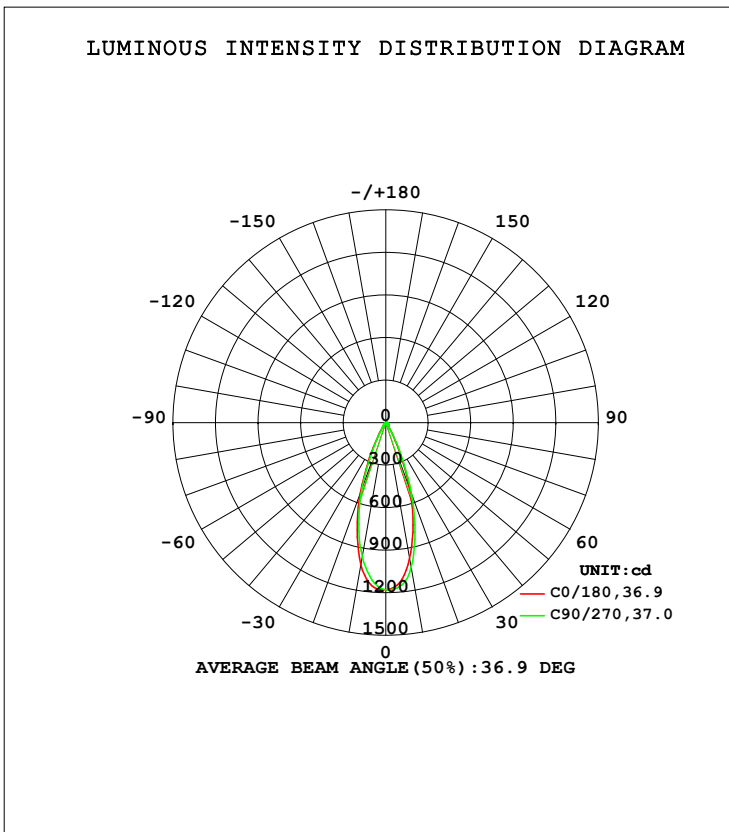


**LUMINAIRE PHOTOMETRIC TEST REPORT**

Test:U:119.99V I:0.0961A P:7.8928W PF:0.9368 Freq:59.98Hz Lamp Flux:534.884x1 lm		
NAME: ASD-CD-PS-2D8AC-WH	TYPE:	WEIGHT:
SPEC.:3000K 90	DIM.:	SERIAL No.:
MFR.: ASD Lighting Corp	SUR.:	Shielding Angle:

DATA OF LAMP		PHOTOMETRIC DATA Eff: 67.77 lm/W			
MODEL		Imax (cd)	1178	S/MH (C0/180)	0.59
NOMINAL POWER (W)	8	LOR (%)	100.0	S/MH (C90/270)	0.58
RATED VOLTAGE (V)	120	TOTAL FLUX (lm)	534.88	<input type="checkbox"/> UP, DN (C0-180)	0.0, 52.0
NOMINAL FLUX (lm)	534.884	CIE CLASS	DIRECT	<input type="checkbox"/> UP, DN (C180-360)	0.0, 48.0
LAMPS INSIDE	1	<input type="checkbox"/> up (%)	0.0	CIBSE SHR NOM	0.50
TEST VOLTAGE (V)	120	<input type="checkbox"/> down (%)	100.0	CIBSE SHR MAX	0.65



C Range: 0 - 360DEG  
 C Interval: 22.5DEG  
 Test Speed: HIGH  
 Temperature: 25.3DEG  
 Operators:  
 Test Date: 2021-11-26

Range: 0 - 90DEG  
 Interval: 1.0DEG  
 Test System: EVERFINE GO-SPEX500\_V1 SYSTEM V2.00.421  
 Humidity: 65.0%  
 Test Distance: 3.080m [K=1.0000]  
 Remarks:

**ZONAL FLUX DIAGRAM**

ZONAL FLUX DIAGRAM:

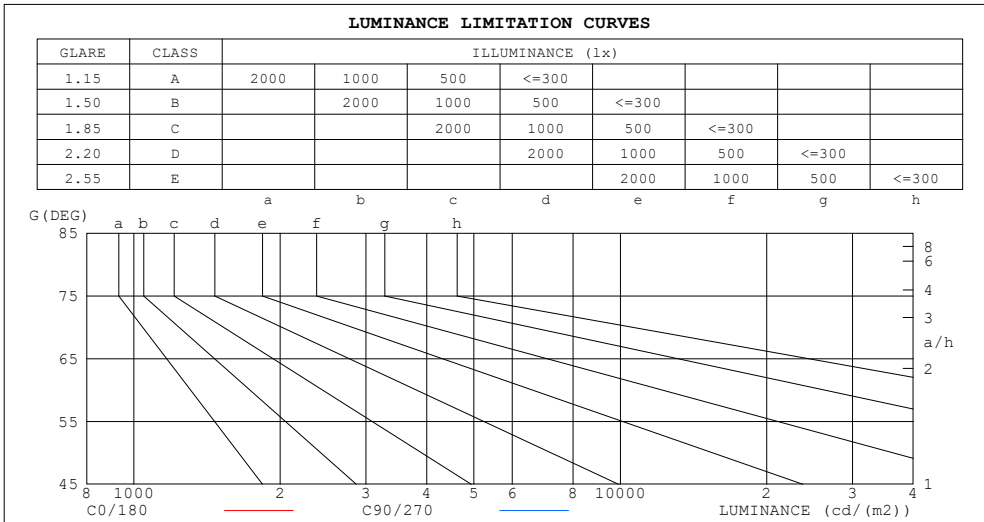
mm	C0	C45	C90	C135	C180	C225	C270	C315	mm	□ zone	□ total	%lum, lamp
10	972.7	993.5	1037	1033	1016	979.8	961.1	969.4	0- 10	104.1	104.1	19.5,19.5
20	490.7	537.8	528.5	612.3	522.8	526.0	490.8	467.1	10- 20	209.7	313.8	58.7,58.7
30	95.81	157.0	103.8	215.4	109.6	160.2	92.94	129.7	20- 30	136.6	450.5	84.2,84.2
40	27.36	33.22	26.59	37.70	27.79	34.11	26.72	31.48	30- 40	37.37	487.9	91.2,91.2
50	17.17	18.88	16.97	18.98	17.28	18.98	17.13	18.91	40- 50	17.81	505.7	94.5,94.5
60	12.37	11.47	12.08	11.47	12.25	11.45	12.18	11.61	50- 60	13.16	518.8	97,97
70	7.549	7.199	7.237	7.077	7.215	7.029	7.243	7.270	60- 70	9.588	528.4	98.8,98.8
80	3.168	3.053	2.921	2.939	2.942	2.876	2.952	3.042	70- 80	5.360	533.8	99.8,99.8
90	0.0183	0.0160	0.0204	0.0167	0.0323	0.0260	0.0274	0.0241	80- 90	1.121	534.9	100,100
100									90-100			
110									100-110			
120									110-120			
130									120-130			
140									130-140			
150									140-150			
160									150-160			
170									160-170			
180									170-180			
DEG	LUMINOUS INTENSITY:cd									UNIT:lm		

C Range: 0 - 360DEG  
 C Interval: 22.5DEG  
 Test Speed: HIGH  
 Temperature:25.3DEG  
 Operators:  
 Test Date:2021-11-26

□ Range: 0 - 90DEG  
 □ Interval: 1.0DEG  
 Test System:EVERFINE GO-SPEX500\_V1 SYSTEM V2.00.421  
 Humidity:65.0%  
 Test Distance:3.080m [K=1.0000]  
 Remarks:

**LUMINANCE LIMITATION CURVES**

Test:U:119.99V I:0.0961A P:7.8928W PF:0.9368 Freq:59.98Hz Lamp Flux:534.884x1 lm		
NAME: ASD-CD-PS-2D8AC-WH	TYPE:	WEIGHT:
SPEC.:3000K 90	DIM.:	SERIAL No.:
MFR.: ASD Lighting Corp	SUR.:	Shielding Angle:



LUMINANCE cd/(m2)		
G (DEG)	C0/180	C90/270
85	98	8
80	165	151
75	183	173
70	199	190
65	214	206
60	223	217
55	222	217
50	241	238
45	275	271

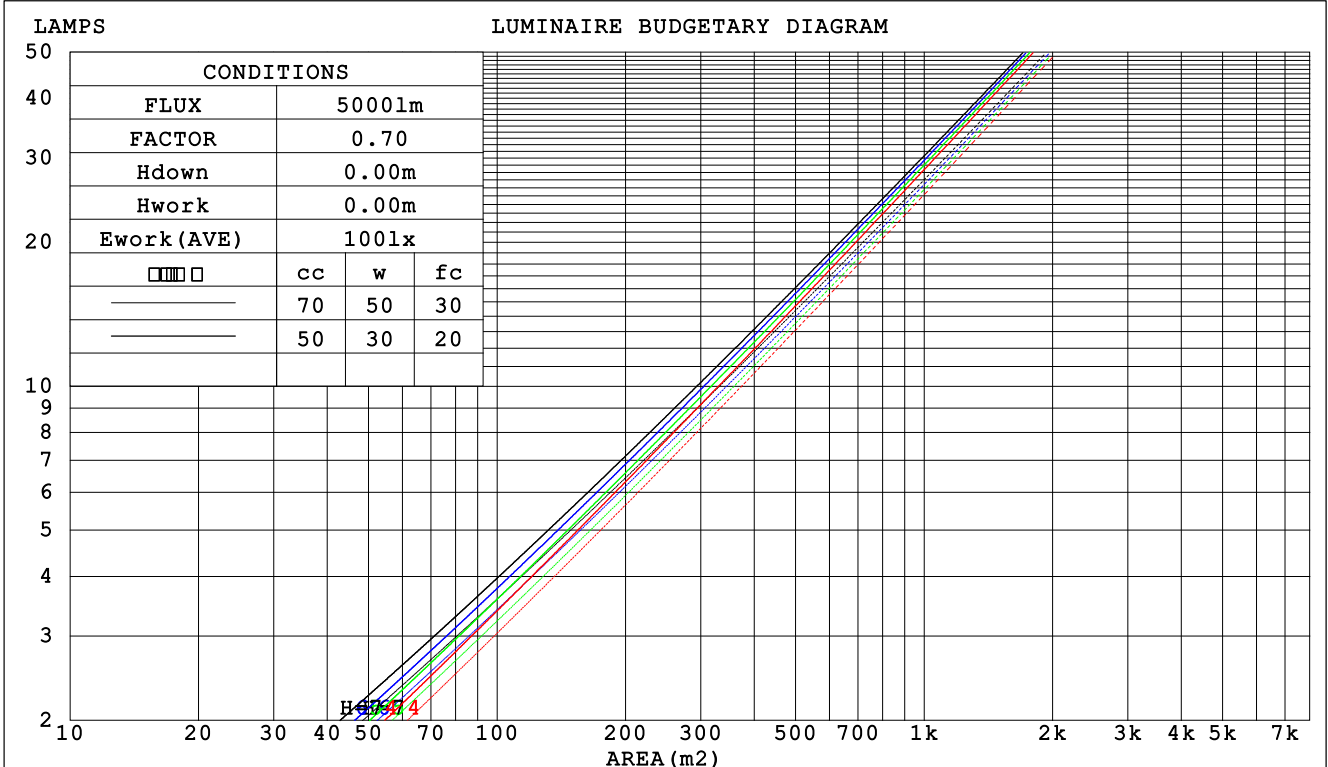
C Range: 0 - 360DEG  
 C Interval: 22.5DEG  
 Test Speed: HIGH  
 Temperature:25.3DEG  
 Operators:  
 Test Date:2021-11-26

Range: 0 - 90DEG  
 Interval: 1.0DEG  
 Test System:EVERFINE GO-SPEX500\_V1 SYSTEM V2.00.421  
 Humidity:65.0%  
 Test Distance:3.080m [K=1.0000]  
 Remarks:

**CU AND LUMINAIRE BUDGETARY ESTIMATE DIAGRAM**

Test:U:119.99V I:0.0961A P:7.8928W PF:0.9368 Freq:59.98Hz Lamp Flux:534.884x1 lm		
NAME: ASD-CD-PS-2D8AC-WH	TYPE:	WEIGHT:
SPEC.:3000K 90	DIM.:	SERIAL No.:
MFR.: ASD Lighting Corp	SUR.:	Shielding Angle:

□cc	80%			70%			50%			30%			10%			0
□w	50%	30%	10%	50%	30%	10%	50%	30%	10%	50%	30%	10%	50%	30%	10%	0
□fc	20%			20%			20%			20%			20%			0
RCR	RCR:Room Cavity Ratio						Coefficients of Utilization(CU)									
0.0	1.19	1.19	1.19	1.16	1.16	1.16	1.11	1.11	1.11	1.06	1.06	1.06	1.02	1.02	1.02	1.00
1.0	1.11	1.09	1.07	1.09	1.07	1.05	1.05	1.03	1.02	1.01	.00	.99	.98	.97	.96	.94
2.0	1.04	1.00	.97	1.02	.99	.96	.99	.96	.94	.96	.94	.92	.94	.92	.90	.88
3.0	.98	.93	.90	.97	.92	.89	.94	.91	.88	.92	.89	.86	.89	.87	.85	.83
4.0	.93	.88	.84	.92	.87	.83	.89	.85	.82	.87	.84	.81	.86	.83	.80	.79
5.0	.88	.83	.79	.87	.82	.78	.85	.81	.78	.84	.80	.77	.82	.79	.76	.75
6.0	.84	.78	.74	.83	.78	.74	.81	.77	.74	.80	.76	.73	.79	.75	.73	.71
7.0	.80	.74	.71	.79	.74	.71	.78	.73	.70	.77	.73	.70	.76	.72	.69	.68
8.0	.76	.71	.67	.76	.71	.67	.75	.70	.67	.74	.70	.67	.73	.69	.66	.65
9.0	.73	.68	.64	.73	.68	.64	.72	.67	.64	.71	.67	.64	.70	.66	.64	.63
10.0	.70	.65	.62	.70	.65	.62	.69	.65	.61	.68	.64	.61	.68	.64	.61	.60



C Range: 0 - 360DEG  
 C Interval: 22.5DEG  
 Test Speed: HIGH  
 Temperature:25.3DEG  
 Operators:  
 Test Date:2021-11-26

□ Range: 0 - 90DEG  
 □ Interval: 1.0DEG  
 Test System:EVERFINE GO-SPEX500\_V1 SYSTEM V2.00.421  
 Humidity:65.0%  
 Test Distance:3.080m [K=1.0000]  
 Remarks:

WEC AND CCEC

Test:U:119.99V I:0.0961A P:7.8928W PF:0.9368 Freq:59.98Hz Lamp Flux:534.884x1 lm		
NAME: ASD-CD-PS-2D8AC-WH	TYPE:	WEIGHT:
SPEC.:3000K 90	DIM.:	SERIAL No.:
MFR.: ASD Lighting Corp	SUR.:	Shielding Angle:

<input type="checkbox"/> cc	80%	70%	50%	30%	10%	0
<input type="checkbox"/> w	50% 30% 10%	50% 30% 10%	50% 30% 10%	50% 30% 10%	50% 30% 10%	0
<input type="checkbox"/> fc	20%	20%	20%	20%	20%	0
RCR	RCR:Room Cavity Ratio		Wall Exitance Coefficients (WEC)			
0.0						
1.0	.171 .097 .031	.164 .094 .030	.152 .087 .028	.140 .081 .026	.130 .075 .024	
2.0	.161 .088 .027	.155 .085 .026	.145 .080 .025	.135 .076 .024	.126 .071 .022	
3.0	.151 .080 .024	.146 .078 .024	.137 .074 .023	.129 .071 .022	.121 .067 .021	
4.0	.141 .074 .022	.137 .072 .021	.130 .069 .021	.123 .066 .020	.116 .063 .019	
5.0	.133 .068 .020	.130 .067 .019	.123 .064 .019	.117 .062 .018	.111 .060 .018	
6.0	.126 .063 .018	.123 .062 .018	.117 .060 .018	.112 .058 .017	.107 .056 .017	
7.0	.120 .059 .017	.117 .058 .017	.112 .057 .016	.107 .055 .016	.103 .053 .016	
8.0	.114 .056 .016	.112 .055 .016	.107 .054 .015	.103 .052 .015	.099 .051 .015	
9.0	.109 .053 .015	.107 .052 .015	.103 .051 .014	.099 .050 .014	.095 .048 .014	
10.0	.104 .050 .014	.102 .049 .014	.099 .048 .014	.095 .047 .013	.092 .046 .013	

<input type="checkbox"/> cc	80%	70%	50%	30%	10%	0
<input type="checkbox"/> w	50% 30% 10%	50% 30% 10%	50% 30% 10%	50% 30% 10%	50% 30% 10%	0
<input type="checkbox"/> fc	20%	20%	20%	20%	20%	0
RCR	RCR:Room Cavity Ratio		Ceiling Cavity Exitance Coefficients (CCEC)			
0.0	.190 .190 .190	.163 .163 .163	.111 .111 .111	.064 .064 .064	.020 .020 .020	
1.0	.171 .157 .145	.146 .135 .125	.100 .093 .087	.058 .054 .050	.018 .017 .016	
2.0	.155 .133 .114	.133 .114 .098	.091 .079 .069	.052 .046 .040	.017 .015 .013	
3.0	.141 .113 .091	.121 .098 .079	.083 .068 .055	.048 .040 .033	.015 .013 .011	
4.0	.130 .099 .074	.112 .085 .065	.077 .059 .045	.044 .035 .027	.014 .011 .009	
5.0	.121 .087 .062	.104 .075 .054	.071 .052 .038	.041 .031 .022	.013 .010 .007	
6.0	.113 .077 .052	.097 .067 .045	.067 .047 .032	.039 .028 .019	.013 .009 .006	
7.0	.106 .069 .044	.091 .060 .038	.063 .042 .027	.036 .025 .016	.012 .008 .005	
8.0	.099 .063 .038	.086 .055 .033	.059 .038 .023	.034 .023 .014	.011 .007 .005	
9.0	.094 .058 .033	.081 .050 .029	.056 .035 .020	.033 .021 .012	.011 .007 .004	
10.0	.089 .053 .029	.077 .046 .025	.053 .032 .018	.031 .019 .011	.010 .006 .004	

C Range: 0 - 360DEG  
 C Interval: 22.5DEG  
 Test Speed: HIGH  
 Temperature:25.3DEG  
 Operators:  
 Test Date:2021-11-26

Range: 0 - 90DEG  
 Interval: 1.0DEG  
 Test System:EVERFINE GO-SPEX500\_V1 SYSTEM V2.00.421  
 Humidity:65.0%  
 Test Distance:3.080m [K=1.0000]  
 Remarks:

**UGR(Unified Glare Rating) Table**

Test:U:119.99V I:0.0961A P:7.8928W PF:0.9368 Freq:59.98Hz Lamp Flux:534.884x1 lm										
NAME: ASD-CD-PS-2D8AC-WH					TYPE:			WEIGHT:		
SPEC.:3000K 90					DIM.:			SERIAL No.:		
MFR.: ASD Lighting Corp					SUR.:			Shielding Angle:		
ceiling/cavity	0.7	0.7	0.5	0.5	0.3	0.7	0.7	0.5	0.5	0.3
walls	0.5	0.3	0.5	0.3	0.3	0.5	0.3	0.5	0.3	0.3
working plane	0.2	0.2	0.2	0.2	0.2	0.2	0.2	0.2	0.2	0.2
Room dimensions	Viewed crosswise					Viewed endwise				
x = 2H y = 2H	4.4	5.2	4.6	5.4	5.6	4.3	5.2	4.6	5.3	5.5
3H	5.6	6.4	5.9	6.6	6.8	5.5	6.3	5.7	6.5	6.7
4H	6.1	6.8	6.4	7.1	7.3	6.0	6.7	6.2	6.9	7.1
6H	6.5	7.2	6.8	7.4	7.7	6.3	7.0	6.6	7.3	7.5
8H	6.6	7.2	6.9	7.5	7.8	6.4	7.0	6.7	7.3	7.6
12H	6.6	7.2	6.9	7.5	7.8	6.3	7.0	6.6	7.3	7.5
4H 2H	4.8	5.6	5.1	5.8	6.0	4.8	5.5	5.1	5.7	6.0
3H	6.2	6.9	6.6	7.2	7.4	6.2	6.8	6.5	7.1	7.3
4H	6.9	7.5	7.2	7.8	8.1	6.7	7.3	7.1	7.6	7.9
6H	7.4	7.9	7.7	8.2	8.6	7.2	7.7	7.6	8.1	8.4
8H	7.5	8.0	7.9	8.3	8.7	7.3	7.8	7.7	8.1	8.5
12H	7.5	8.0	7.9	8.4	8.7	7.3	7.7	7.7	8.1	8.5
8H 4H	7.1	7.6	7.5	7.9	8.3	7.0	7.4	7.3	7.8	8.2
6H	7.7	8.1	8.1	8.5	8.9	7.5	7.9	8.0	8.3	8.7
8H	7.9	8.2	8.3	8.7	9.1	7.7	8.0	8.1	8.4	8.9
12H	8.0	8.3	8.5	8.7	9.2	7.6	7.9	8.1	8.4	8.8
12H 4H	7.1	7.5	7.5	7.9	8.3	7.0	7.4	7.4	7.8	8.2
6H	7.7	8.1	8.2	8.5	8.9	7.6	7.9	8.0	8.3	8.8
8H	7.9	8.2	8.4	8.7	9.2	7.7	8.0	8.2	8.5	8.9
Variations with the observer position at spacings:										
S = 1.0H	+ 0.3 / - 0.4					+ 0.3 / - 0.4				
1.5H	+ 0.2 / - 0.3					+ 0.2 / - 0.4				
2.0H	+ 0.3 / - 0.3					+ 0.3 / - 0.3				

CIE Pub.117, 534.9 lm Total Lamp Luminous Flux Correct (8log(F/F0) = -2.2)  
 Area: 0.111111 m2

C Range: 0 - 360DEG  
 C Interval: 22.5DEG  
 Test Speed: HIGH  
 Temperature:25.3DEG  
 Operators:  
 Test Date:2021-11-26

Range: 0 - 90DEG  
 Interval: 1.0DEG  
 Test System:EVERFINE GO-SPEX500\_V1 SYSTEM V2.00.421  
 Humidity:65.0%  
 Test Distance:3.080m [K=1.0000]  
 Remarks:

**UTILIZATION FACTORS TABLE**

Test:U:119.99V I:0.0961A P:7.8928W PF:0.9368 Freq:59.98Hz Lamp Flux:534.884x1 lm		
NAME: ASD-CD-PS-2D8AC-WH	TYPE:	WEIGHT:
SPEC.:3000K 90	DIM.:	SERIAL No.:
MFR.: ASD Lighting Corp	SUR.:	Shielding Angle:

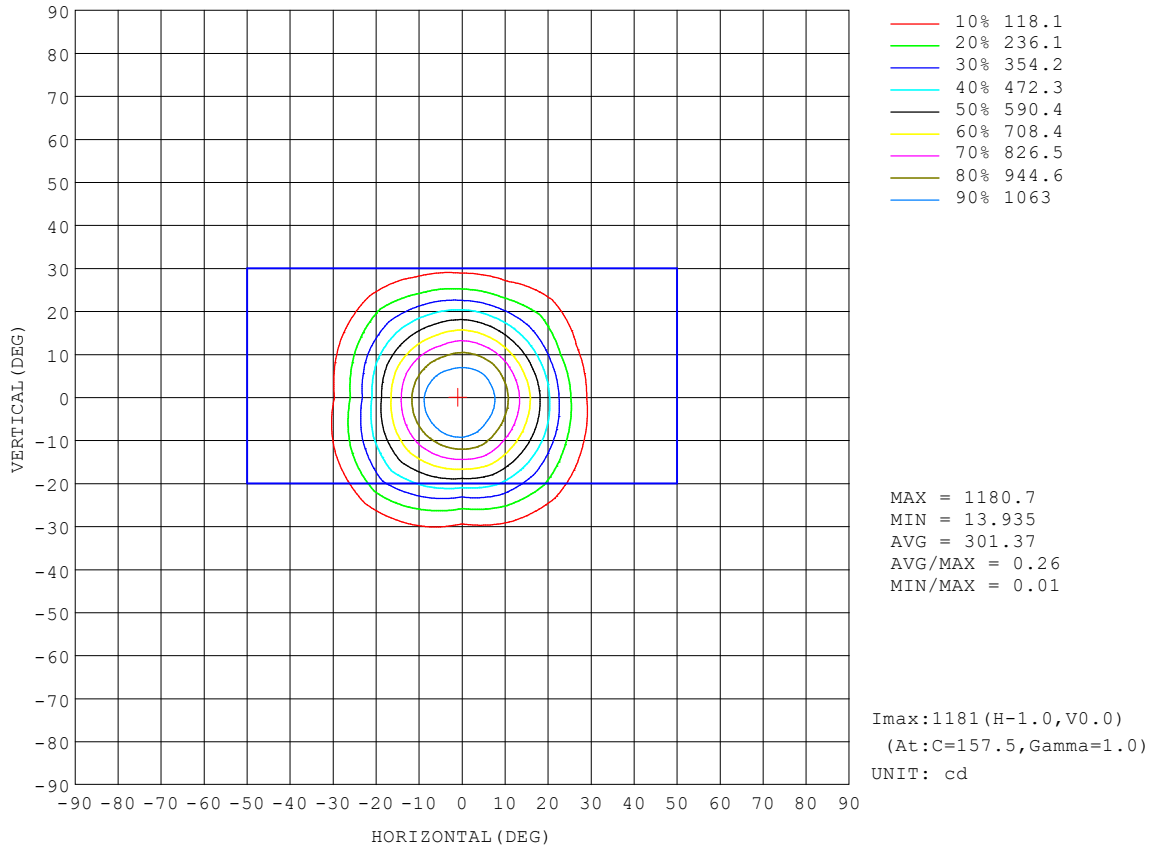
REFLECTANCE										
Ceiling	0.8	0.8	0.8	0.7	0.7	0.7	0.5	0.5	0.5	0
Walls	0.7	0.5	0.3	0.7	0.5	0.3	0.7	0.5	0.3	0
Working plane	0.2	0.2	0.2	0.2	0.2	0.2	0.2	0.2	0.2	0
ROOM INDEX	UTILIZATION FACTORS (PERCENT) $k(RI) \times RCR = 5$									
k = 0.60	86	80	76	86	79	76	85	79	75	72
0.80	94	87	84	93	87	83	92	87	83	79
1.00	98	92	88	97	92	88	96	92	88	83
1.25	102	97	93	101	96	93	99	95	92	87
1.50	105	100	96	104	99	96	101	98	95	90
2.00	108	103	100	106	102	99	104	100	98	92
2.50	110	106	102	108	104	101	105	102	100	93
3.00	111	108	105	109	106	104	106	103	101	95
4.00	113	110	108	111	109	107	108	106	104	97
5.00	115	112	110	113	110	109	109	107	106	98
ROOM INDEX	UF(total)									Direct
According to DIN EN 13032-2 2004			Suspended				SHRNOM = 1.25			

C Range: 0 - 360DEG  
 C Interval: 22.5DEG  
 Test Speed: HIGH  
 Temperature:25.3DEG  
 Operators:  
 Test Date:2021-11-26

Range: 0 - 90DEG  
 Interval: 1.0DEG  
 Test System:EVERFINE GO-SPEX500\_V1 SYSTEM V2.00.421  
 Humidity:65.0%  
 Test Distance:3.080m [K=1.0000]  
 Remarks:

**ISOCANDELA DIAGRAM**

Test:U:119.99V I:0.0961A P:7.8928W PF:0.9368 Freq:59.98Hz Lamp Flux:534.884x1 lm		
NAME: ASD-CD-PS-2D8AC-WH	TYPE:	WEIGHT:
SPEC.:3000K 90	DIM.:	SERIAL No.:
MFR.: ASD Lighting Corp	SUR.:	Shielding Angle:



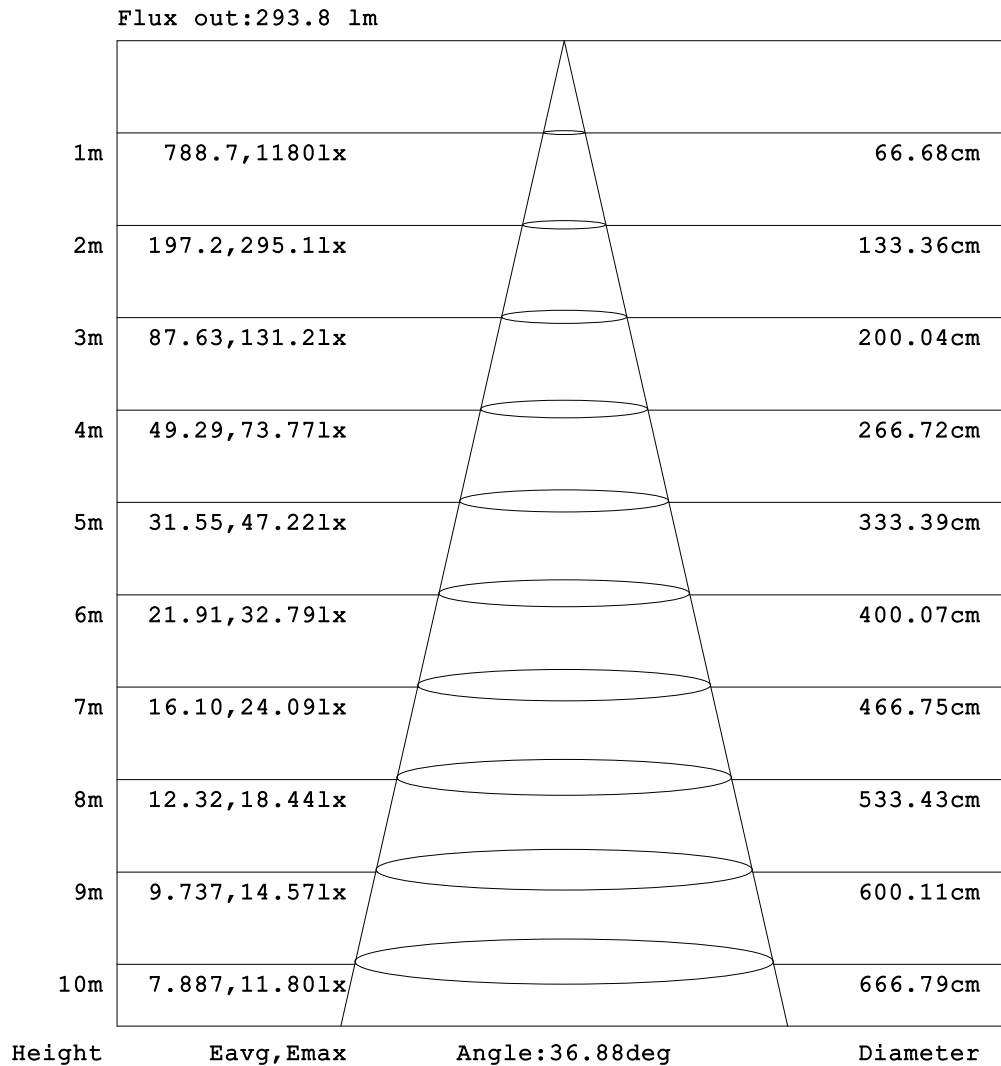
C Range: 0 - 360DEG  
 C Interval: 22.5DEG  
 Test Speed: HIGH  
 Temperature:25.3DEG  
 Operators:  
 Test Date:2021-11-26

Range: 0 - 90DEG  
 Interval: 1.0DEG  
 Test System:EVERFINE GO-SPEX500\_V1 SYSTEM V2.00.421  
 Humidity:65.0%  
 Test Distance:3.080m [K=1.0000]  
 Remarks:



**AAI Figure**

Test:U:119.99V I:0.0961A P:7.8928W PF:0.9368 Freq:59.98Hz Lamp Flux:534.884x1 lm		
NAME: ASD-CD-PS-2D8AC-WH	TYPE:	WEIGHT:
SPEC.:3000K 90	DIM.:	SERIAL No.:
MFR.: ASD Lighting Corp	SUR.:	Shielding Angle:



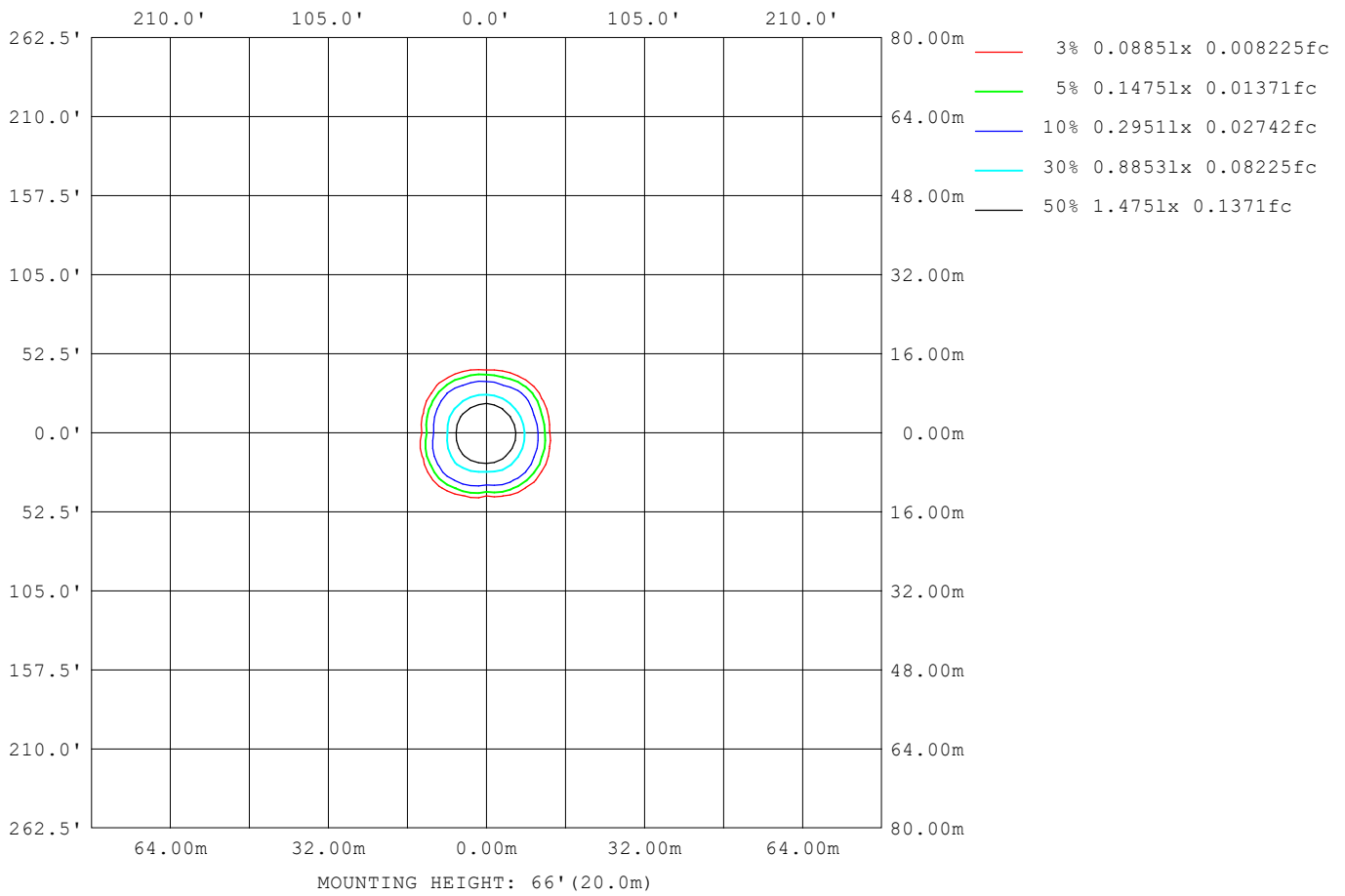
Note:The Curves indicate the illuminated area and the average illumination when the luminaire is at different distance.

C Range: 0 - 360DEG  
 C Interval: 22.5DEG  
 Test Speed: HIGH  
 Temperature:25.3DEG  
 Operators:  
 Test Date:2021-11-26

Range: 0 - 90DEG  
 Interval: 1.0DEG  
 Test System:EVERFINE GO-SPEX500\_V1 SYSTEM V2.00.421  
 Humidity:65.0%  
 Test Distance:3.080m [K=1.0000]  
 Remarks:

**ISOLUX DIAGRAM**

Test:U:119.99V I:0.0961A P:7.8928W PF:0.9368 Freq:59.98Hz Lamp Flux:534.884x1 lm		
NAME: ASD-CD-PS-2D8AC-WH	TYPE:	WEIGHT:
SPEC.:3000K 90	DIM.:	SERIAL No.:
MFR.: ASD Lighting Corp	SUR.:	Shielding Angle:



C Range: 0 - 360DEG  
 C Interval: 22.5DEG  
 Test Speed: HIGH  
 Temperature:25.3DEG  
 Operators:  
 Test Date:2021-11-26

Range: 0 - 90DEG  
 Interval: 1.0DEG  
 Test System:EVERFINE GO-SPEX500\_V1 SYSTEM V2.00.421  
 Humidity:65.0%  
 Test Distance:3.080m [K=1.0000]  
 Remarks:

**LED Avg.L Report**

Test:U:119.99V I:0.0961A P:7.8928W PF:0.9368 Freq:59.98Hz Lamp Flux:534.884x1 lm		
NAME: ASD-CD-PS-2D8AC-WH	TYPE:	WEIGHT:
SPEC.:3000K 90	DIM.:	SERIAL No.:
MFR.: ASD Lighting Corp	SUR.:	Shielding Angle:

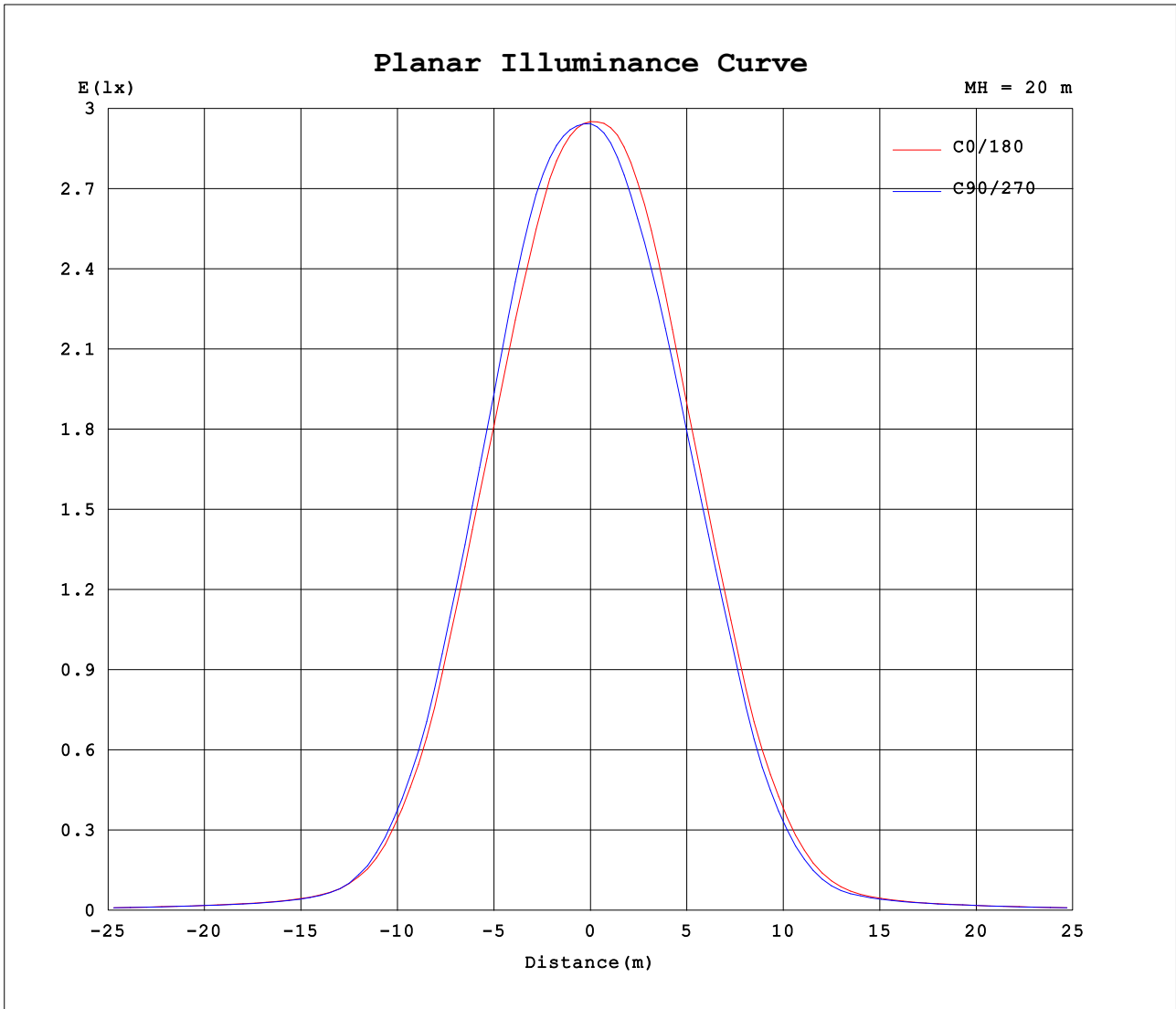
AvgL	cd/m2
L_0~180 (65) av	210
L_0~180 (75) av	177
L_0~180 (85) av	98
L_90~270 (65) av	207
L_90~270 (75) av	173
L_90~270 (85) av	29
L_45 (65) av	198
L_45 (75) av	173
L_45 (85) av	69

Standard: GB/T 29293-2012

C Range: 0 - 360DEG  
 C Interval: 22.5DEG  
 Test Speed: HIGH  
 Temperature:25.3DEG  
 Operators:  
 Test Date:2021-11-26

Range: 0 - 90DEG  
 Interval: 1.0DEG  
 Test System:EVERFINE GO-SPEX500\_V1 SYSTEM V2.00.421  
 Humidity:65.0%  
 Test Distance:3.080m [K=1.0000]  
 Remarks:

**Planar Illuminance Curve**



C Range: 0 - 360DEG  
 C Interval: 22.5DEG  
 Test Speed: HIGH  
 Temperature: 25.3DEG  
 Operators:  
 Test Date: 2021-11-26

Range: 0 - 90DEG  
 Interval: 1.0DEG  
 Test System: EVERFINE GO-SPEX500\_V1 SYSTEM V2.00.421  
 Humidity: 65.0%  
 Test Distance: 3.080m [K=1.0000]  
 Remarks:

LUMINOUS DISTRIBUTION INTENSITY DATA

Test:U:119.99V I:0.0961A P:7.8928W PF:0.9368 Freq:59.98Hz Lamp Flux:534.884x1 lm		
NAME: ASD-CD-PS-2D8AC-WH	TYPE:	WEIGHT:
SPEC.:3000K 90	DIM.:	SERIAL No.:
MFR.: ASD Lighting Corp	SUR.:	Shielding Angle:

Table--1

UNIT: cd

C (DEG) \ □ (DEG)	0	22.5	45	67.5	90	112.5	135	157.5	180	202.5	225	247.5	270	292.5	315	337.5			
0	1178	1178	1178	1178	1178	1178	1178	1178	1178	1178	1178	1178	1178	1178	1178	1178			
5	1133	1137	1138	1149	1159	1161	1158	1160	1153	1141	1131	1118	1114	1115	1123	1127			
10	973	978	994	1023	1037	1039	1033	1028	1016	999	980	958	961	960	969	967			
15	749	756	772	804	799	810	820	802	783	781	758	734	740	725	721	729			
20	491	519	538	556	529	574	612	580	523	538	526	503	491	471	467	470			
25	247	282	329	320	272	346	417	358	273	310	327	274	242	234	272	232			
30	95.8	122	157	140	104	161	215	177	110	141	160	115	92.9	96.3	130	100			
35	42.2	49.5	61.0	49.3	41.3	53.5	81.0	59.3	44.4	51.6	61.3	46.0	39.9	43.5	51.0	44.3			
40	27.4	29.4	33.2	28.9	26.6	29.5	37.7	31.1	27.8	29.9	34.1	29.0	26.7	28.3	31.5	28.8			
45	21.6	22.8	23.8	22.5	21.3	22.6	24.9	22.8	21.7	22.7	24.2	22.8	21.6	22.6	23.3	22.5			
50	17.2	18.5	18.9	18.4	17.0	18.5	19.0	18.6	17.3	18.3	19.0	18.4	17.1	18.4	18.9	18.3			
55	14.1	14.7	14.6	14.6	13.8	14.6	14.9	14.8	14.2	14.6	14.7	14.5	14.0	14.6	14.8	14.6			
60	12.4	12.3	11.5	12.2	12.1	12.2	11.5	12.3	12.3	12.2	11.5	12.1	12.2	12.2	11.6	12.3			
65	10.0	10.0	9.33	9.87	9.69	9.83	9.25	9.85	9.71	9.75	9.21	9.73	9.71	9.85	9.43	10.00			
70	7.55	7.56	7.20	7.39	7.24	7.33	7.08	7.33	7.22	7.24	7.03	7.24	7.24	7.38	7.27	7.53			
75	5.25	5.27	5.05	5.11	4.99	5.04	4.91	5.03	4.94	4.95	4.86	4.96	4.97	5.08	5.09	5.23			
80	3.17	3.19	3.05	3.06	2.92	2.97	2.94	3.00	2.94	2.92	2.88	2.93	2.95	3.02	3.04	3.13			
85	0.95	1.31	0.65	0.22	0.08	0.16	0.56	1.18	0.96	1.12	0.76	0.52	0.49	0.45	0.70	1.20			
90	0.02	0.02	0.02	0.02	0.02	0.02	0.02	0.02	0.03	0.03	0.03	0.02	0.03	0.02	0.02	0.03			

C Range: 0 - 360DEG	□ Range: 0 - 90DEG
C Interval: 22.5DEG	□ Interval: 1.0DEG
Test Speed: HIGH	Test System:EVERFINE GO-SPEX500_V1 SYSTEM V2.00.421
Temperature:25.3DEG	Humidity:65.0%
Operators:	Test Distance:3.080m [K=1.0000]
Test Date:2021-11-26	Remarks: