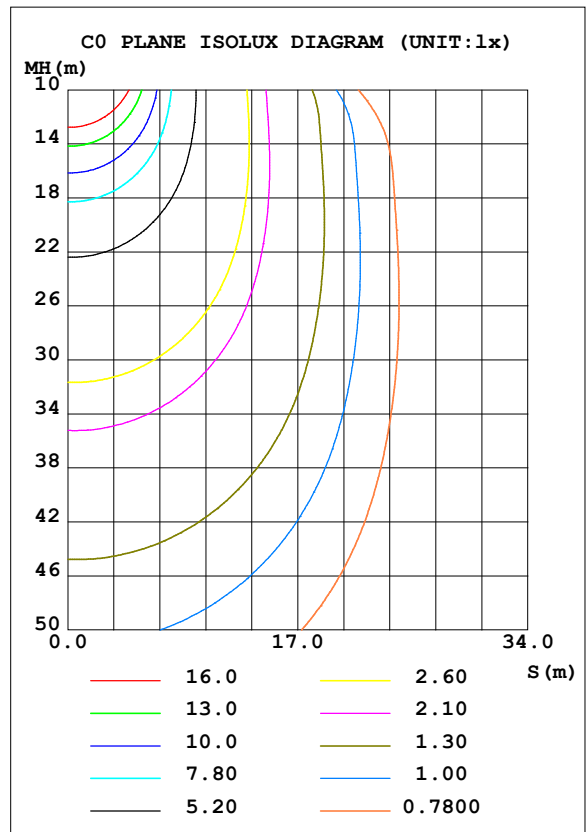
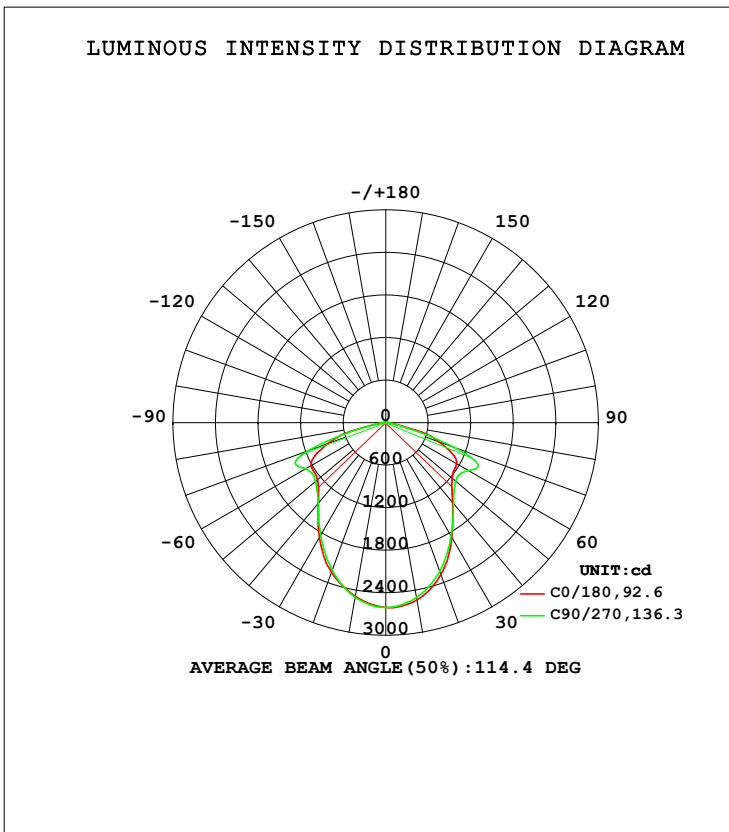


LUMINAIRE PHOTOMETRIC TEST REPORT

Test:U:121.5V I:0.3583A P:43.35W PF:0.9955 Freq:59.97Hz Lamp Flux:6916.9x1 lm		
NAME: ASD Lighting Corp	TYPE:	WEIGHT:
SPEC.:ASD-CAN07-45DAC-BZ-4000K	DIM.:	SERIAL No.:
MFR.: ASD Lighting Corp	SUR.:0.22*0.22m	Shielding Angle:

DATA OF LAMP		PHOTOMETRIC DATA Eff: 159.58 lm/W			
MODEL	ASD-CAN07-45DAC-BZ-4000K	Kmax (cd)	2610	S/MH (C0/180)	1.09
NOMINAL POWER (W)	45	LOR (%)	100.0	S/MH (C90/270)	1.08
RATED VOLTAGE (V)	120-277	TOTAL FLUX (lm)	6916.9	η UP, DN (C0-180)	0.4, 49.1
NOMINAL FLUX (lm)	6916.9	CIE CLASS	DIRECT	η UP, DN (C180-360)	0.4, 50.0
LAMPS INSIDE	1	η up (%)	0.9	CIBSE SHR NOM	1.25
TEST VOLTAGE (V)	120	η down (%)	99.1	CIBSE SHR MAX	1.30



C Range: 0 - 360DEG
 C Interval: 45.0DEG
 Test Speed: HIGH
 Temperature: 28.8DEG
 Operators: wudashuai
 Test Date: 2021-11-04

γ Range: 0 - 180DEG
 γ Interval: 1.0DEG
 Test System: EVERFINE GO-2000A_V1 SYSTEM V2.0.364
 Humidity: 66%
 Test Distance: 6.500m [K=1.0000]
 Remarks:

ZONAL FLUX DIAGRAM

ZONAL FLUX DIAGRAM:

γ	C0	C45	C90	C135	C180	C225	C270	C315	γ	Φ zone	Φ total	%lum, lamp
10	2539	2531	2503	2489	2486	2493	2500	2521	0- 10	243.9	243.9	3.53,3.53
20	2280	2283	2230	2245	2244	2244	2211	2279	10- 20	674.1	918.0	13.3,13.3
30	1867	1877	1845	1892	1873	1882	1835	1913	20- 30	952.4	1870	27,27
40	1466	1502	1489	1531	1482	1534	1487	1540	30- 40	1050	2921	42.2,42.2
50	1223	1310	1288	1347	1258	1344	1294	1334	40- 50	1071	3991	57.7,57.7
60	1156	1296	1353	1362	1217	1345	1308	1343	50- 60	1153	5144	74.4,74.4
70	805.9	765.0	1038	896.3	870.3	924.1	1170	808.0	60- 70	1193	6337	91.6,91.6
80	144.0	96.83	119.5	109.7	169.3	123.3	160.8	107.0	70- 80	464.9	6802	98.3,98.3
90	6.002	5.129	5.539	6.580	6.836	7.272	6.117	5.289	80- 90	55.10	6857	99.1,99.1
100	5.213	5.341	5.505	5.179	4.804	4.831	5.077	5.048	90-100	5.010	6862	99.2,99.2
110	6.995	7.106	7.301	7.002	6.585	6.701	7.011	6.940	100-110	6.388	6868	99.3,99.3
120	8.826	8.883	9.052	8.820	8.383	8.414	8.641	8.609	110-120	7.757	6876	99.4,99.4
130	10.99	10.92	11.17	10.88	10.60	10.51	10.77	10.64	120-130	8.682	6885	99.5,99.5
140	13.36	13.35	13.62	13.28	13.07	13.00	13.34	13.16	130-140	9.308	6894	99.7,99.7
150	15.19	15.19	15.41	15.14	14.96	14.97	15.26	15.12	140-150	8.951	6903	99.8,99.8
160	16.48	16.35	16.56	16.30	16.34	16.26	16.45	16.39	150-160	7.294	6910	99.9,99.9
170	17.47	17.28	17.49	17.26	17.46	17.30	17.47	17.37	160-170	4.781	6915	100,100
180	17.98	17.77	17.98	17.79	17.98	17.76	17.98	17.79	170-180	1.680	6917	100,100
DEG	LUMINOUS INTENSITY:cd									UNIT:lm		

Conical surface Flux(90deg): 3452.3 lm

%lum = 49.9%

%lamp = 49.9%

Conical surface Flux(120deg): 5144.1 lm

%lum = 74.4%

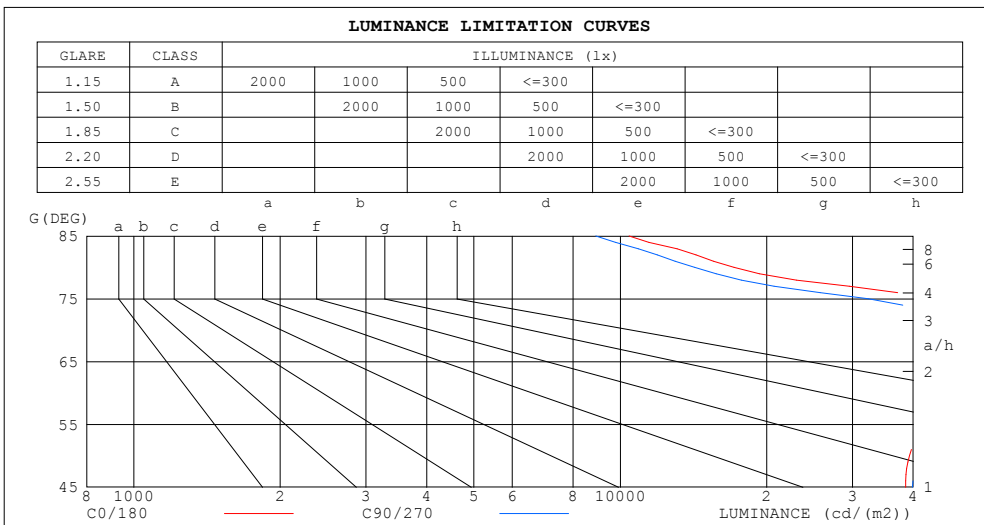
%lamp = 74.4%

C Range: 0 - 360DEG
 C Interval: 45.0DEG
 Test Speed: HIGH
 Temperature:28.8DEG
 Operators:wudashuai
 Test Date:2021-11-04

γ Range: 0 - 180DEG
 γ Interval: 1.0DEG
 Test System:EVERFINE GO-2000A_V1 SYSTEM V2.0.364
 Humidity:66%
 Test Distance:6.500m [K=1.0000]
 Remarks:

LUMINANCE LIMITATION CURVES

Test:U:121.5V I:0.3583A P:43.35W PF:0.9955 Freq:59.97Hz Lamp Flux:6916.9x1 lm		
NAME: ASD Lighting Corp	TYPE:	WEIGHT:
SPEC.:ASD-CAN07-45DAC-BZ-4000K	DIM.:	SERIAL No.:
MFR.: ASD Lighting Corp	SUR.:0.22*0.22m	Shielding Angle:



LUMINANCE cd/(m2)		
G (DEG)	C0/180	C90/270
85	10425	8907
80	17124	14223
75	43805	32326
70	48659	62704
65	50738	70472
60	47739	55938
55	42307	45948
50	39282	41400
45	38612	39839

C Range: 0 - 360DEG
 C Interval: 45.0DEG
 Test Speed: HIGH
 Temperature:28.8DEG
 Operators:wudashuai
 Test Date:2021-11-04

γ Range: 0 - 180DEG
 γ Interval: 1.0DEG
 Test System:EVERFINE GO-2000A_V1 SYSTEM V2.0.364
 Humidity:66%
 Test Distance:6.500m [K=1.0000]
 Remarks:

WEC AND CCEC

Test:U:121.5V I:0.3583A P:43.35W PF:0.9955 Freq:59.97Hz Lamp Flux:6916.9x1 lm		
NAME: ASD Lighting Corp	TYPE:	WEIGHT:
SPEC.:ASD-CAN07-45DAC-BZ-4000K	DIM.:	SERIAL No.:
MFR.: ASD Lighting Corp	SUR.:0.22*0.22m	Shielding Angle:

ρ _{cc}	80%			70%			50%			30%			10%			0
ρ _w	50%	30%	10%	50%	30%	10%	50%	30%	10%	50%	30%	10%	50%	30%	10%	0
ρ _{fc}	20%			20%			20%			20%			20%			0
RCR	RCR:Room Cavity Ratio						Wall Exitance Coefficients (WEC)									
0.0																
1.0	.308	.175	.056	.301	.172	.054	.287	.165	.053	.274	.158	.051	.263	.152	.049	
2.0	.295	.162	.050	.289	.159	.049	.277	.154	.048	.265	.149	.047	.255	.144	.045	
3.0	.275	.146	.044	.269	.144	.043	.258	.140	.043	.248	.136	.042	.239	.132	.041	
4.0	.254	.132	.039	.248	.130	.038	.239	.127	.038	.230	.123	.037	.222	.120	.037	
5.0	.234	.119	.035	.230	.118	.034	.221	.115	.034	.213	.112	.033	.205	.110	.033	
6.0	.217	.109	.031	.213	.107	.031	.205	.105	.031	.198	.103	.030	.191	.101	.030	
7.0	.201	.099	.028	.197	.098	.028	.191	.096	.028	.184	.094	.027	.178	.093	.027	
8.0	.187	.092	.026	.184	.091	.026	.178	.089	.025	.172	.087	.025	.167	.086	.025	
9.0	.175	.085	.024	.172	.084	.024	.167	.082	.023	.162	.081	.023	.157	.080	.023	
10.0	.164	.079	.022	.162	.078	.022	.157	.077	.022	.152	.076	.021	.148	.074	.021	

ρ _{cc}	80%			70%			50%			30%			10%			0
ρ _w	50%	30%	10%	50%	30%	10%	50%	30%	10%	50%	30%	10%	50%	30%	10%	0
ρ _{fc}	20%			20%			20%			20%			20%			0
RCR	RCR:Room Cavity Ratio						Ceiling Cavity Exitance Coefficients (CCEC)									
0.0	.197	.197	.197	.168	.168	.168	.115	.115	.115	.066	.066	.066	.021	.021	.021	
1.0	.187	.163	.141	.160	.140	.121	.109	.096	.084	.063	.056	.049	.020	.018	.016	
2.0	.179	.139	.104	.154	.119	.090	.105	.083	.063	.061	.048	.037	.019	.016	.012	
3.0	.172	.121	.080	.148	.104	.070	.101	.073	.049	.059	.042	.029	.019	.014	.009	
4.0	.165	.108	.064	.141	.093	.056	.097	.065	.039	.056	.038	.023	.018	.012	.008	
5.0	.157	.098	.053	.135	.084	.046	.093	.059	.033	.054	.035	.019	.017	.011	.006	
6.0	.150	.089	.046	.129	.077	.040	.089	.054	.028	.052	.032	.017	.017	.010	.006	
7.0	.143	.082	.040	.123	.071	.035	.085	.050	.025	.049	.029	.015	.016	.010	.005	
8.0	.136	.077	.035	.117	.066	.031	.081	.047	.022	.047	.027	.013	.015	.009	.004	
9.0	.130	.072	.032	.112	.062	.028	.078	.044	.020	.045	.026	.012	.015	.008	.004	
10.0	.124	.067	.029	.107	.058	.025	.074	.041	.018	.043	.024	.011	.014	.008	.004	

C Range: 0 - 360DEG
 C Interval: 45.0DEG
 Test Speed: HIGH
 Temperature:28.8DEG
 Operators:wudashuai
 Test Date:2021-11-04

γ Range: 0 - 180DEG
 γ Interval: 1.0DEG
 Test System:EVERFINE GO-2000A_V1 SYSTEM V2.0.364
 Humidity:66%
 Test Distance:6.500m [K=1.0000]
 Remarks:

UGR(Unified Glare Rating) Table

Test:U:121.5V I:0.3583A P:43.35W PF:0.9955 Freq:59.97Hz Lamp Flux:6916.9x1 lm										
NAME: ASD Lighting Corp					TYPE:			WEIGHT:		
SPEC.:ASD-CAN07-45DAC-BZ-4000K					DIM.:			SERIAL No.:		
MFR.: ASD Lighting Corp					SUR.:0.22*0.22m			Shielding Angle:		
ceiling/cavity	0.7	0.7	0.5	0.5	0.3	0.7	0.7	0.5	0.5	0.3
walls	0.5	0.3	0.5	0.3	0.3	0.5	0.3	0.5	0.3	0.3
working plane	0.2	0.2	0.2	0.2	0.2	0.2	0.2	0.2	0.2	0.2
Room dimensions	Viewed crosswise					Viewed endwise				
x = 2H y = 2H	26.4	27.9	26.7	28.1	28.4	27.0	28.5	27.3	28.8	29.0
3H	28.4	29.8	28.7	30.1	30.3	29.5	30.9	29.8	31.2	31.5
4H	29.0	30.3	29.3	30.6	30.9	29.8	31.2	30.1	31.4	31.7
6H	29.0	30.3	29.4	30.6	30.9	29.8	31.1	30.1	31.3	31.6
8H	29.0	30.3	29.4	30.6	30.9	29.7	31.0	30.1	31.3	31.6
12H	29.0	30.2	29.4	30.5	30.8	29.7	30.9	30.1	31.2	31.5
4H 2H	27.4	28.8	27.8	29.1	29.3	27.9	29.2	28.2	29.5	29.8
3H	29.3	30.5	29.7	30.8	31.2	30.2	31.4	30.6	31.7	32.1
4H	29.9	31.0	30.3	31.3	31.7	30.5	31.6	30.9	31.9	32.3
6H	30.0	30.9	30.4	31.3	31.7	30.5	31.5	30.9	31.8	32.2
8H	30.0	30.9	30.4	31.3	31.7	30.5	31.4	30.9	31.8	32.2
12H	30.0	30.8	30.4	31.2	31.6	30.5	31.3	30.9	31.7	32.1
8H 4H	29.9	30.8	30.4	31.2	31.6	30.5	31.4	30.9	31.8	32.2
6H	30.1	30.8	30.5	31.2	31.7	30.5	31.3	31.0	31.7	32.2
8H	30.1	30.7	30.5	31.2	31.6	30.5	31.2	31.0	31.6	32.1
12H	30.1	30.6	30.6	31.1	31.6	30.5	31.1	31.0	31.6	32.1
12H 4H	29.9	30.7	30.3	31.1	31.5	30.5	31.3	30.9	31.7	32.1
6H	30.0	30.7	30.5	31.1	31.6	30.5	31.2	31.0	31.6	32.1
8H	30.1	30.6	30.5	31.1	31.6	30.5	31.1	31.0	31.5	32.0
Variations with the observer position at spacings:										
S = 1.0H	+ 0.1 / - 0.2					+ 0.1 / - 0.1				
1.5H	+ 0.2 / - 0.3					+ 0.3 / - 0.5				
2.0H	+ 0.6 / - 0.7					+ 0.9 / - 0.7				

CIE Pub.117, 6917 lm Total Lamp Luminous Flux Corrected (8log(F/F0) = 6.7)

C Range: 0 - 360DEG
 C Interval: 45.0DEG
 Test Speed: HIGH
 Temperature:28.8DEG
 Operators:wudashuai
 Test Date:2021-11-04

γ Range: 0 - 180DEG
 γ Interval: 1.0DEG
 Test System:EVERFINE GO-2000A_V1 SYSTEM V2.0.364
 Humidity:66%
 Test Distance:6.500m [K=1.0000]
 Remarks:

UTILIZATION FACTORS TABLE

Test:U:121.5V I:0.3583A P:43.35W PF:0.9955 Freq:59.97Hz Lamp Flux:6916.9x1 lm		
NAME: ASD Lighting Corp	TYPE:	WEIGHT:
SPEC.:ASD-CAN07-45DAC-BZ-4000K	DIM.:	SERIAL No.:
MFR.: ASD Lighting Corp	SUR.:0.22*0.22m	Shielding Angle:

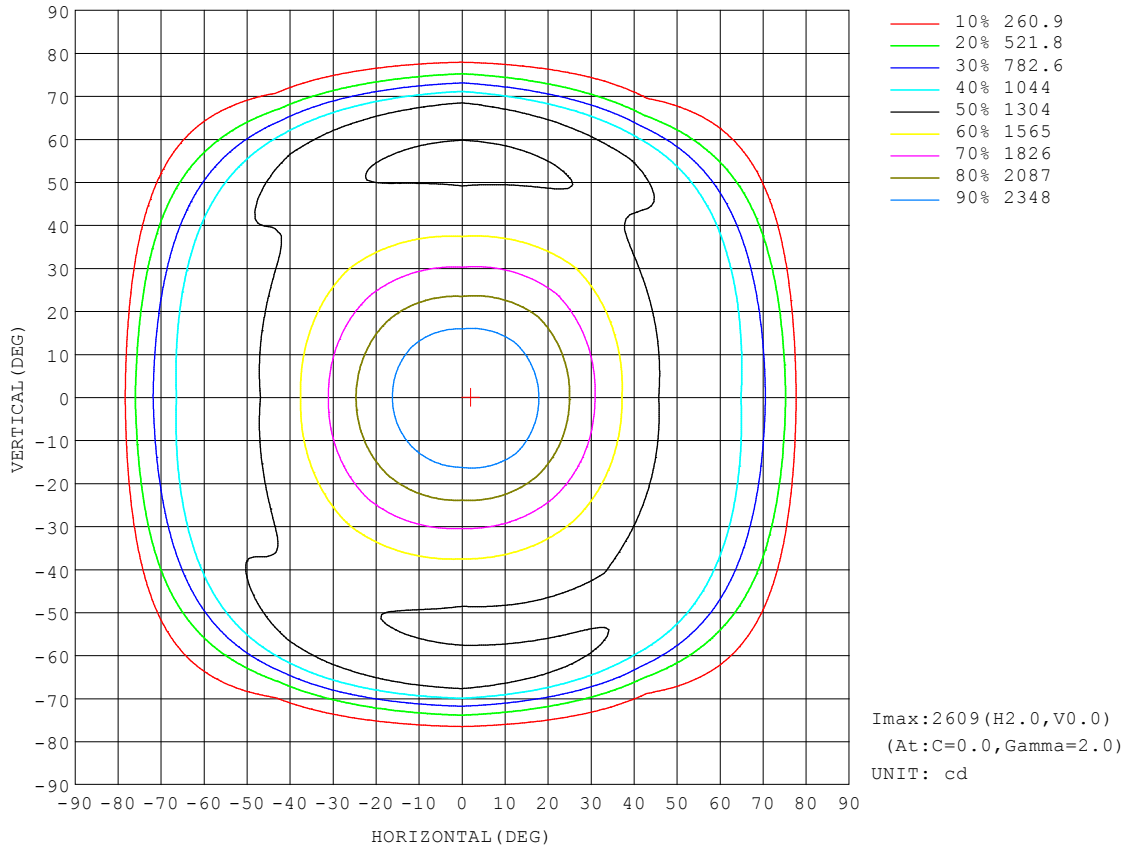
REFLECTANCE										
Ceiling	0.8	0.8	0.8	0.7	0.7	0.7	0.5	0.5	0.5	0
Walls	0.7	0.5	0.3	0.7	0.5	0.3	0.7	0.5	0.3	0
Working plane	0.2	0.2	0.2	0.2	0.2	0.2	0.2	0.2	0.2	0
ROOM INDEX	UTILIZATION FACTORS (PERCENT) $k(RI) \times RCR = 5$									
k = 0.60	57	45	38	56	45	38	55	44	38	31
0.80	66	54	47	65	54	47	63	53	46	39
1.00	74	63	55	73	62	55	71	64	54	47
1.25	81	71	63	80	70	63	77	68	62	54
1.50	87	76	69	85	75	69	82	74	67	60
2.00	94	85	78	92	84	77	88	81	76	68
2.50	98	90	84	96	89	83	92	86	81	72
3.00	102	95	89	99	93	88	95	90	86	77
4.00	106	100	96	104	99	94	99	95	92	82
5.00	109	104	100	106	102	98	102	98	95	86
ROOM INDEX	UF(total)									Direct
According to DIN EN 13032-2 2004			Suspended				SHRNOM = 1.25			

C Range: 0 - 360DEG
 C Interval: 45.0DEG
 Test Speed: HIGH
 Temperature:28.8DEG
 Operators:wudashuai
 Test Date:2021-11-04

γ Range: 0 - 180DEG
 γ Interval: 1.0DEG
 Test System:EVERFINE GO-2000A_V1 SYSTEM V2.0.364
 Humidity:66%
 Test Distance:6.500m [K=1.0000]
 Remarks:

ISOCANDELA DIAGRAM

Test:U:121.5V I:0.3583A P:43.35W PF:0.9955 Freq:59.97Hz Lamp Flux:6916.9x1 lm		
NAME: ASD Lighting Corp	TYPE:	WEIGHT:
SPEC.:ASD-CAN07-45DAC-BZ-4000K	DIM.:	SERIAL No.:
MFR.: ASD Lighting Corp	SUR.:0.22*0.22m	Shielding Angle:

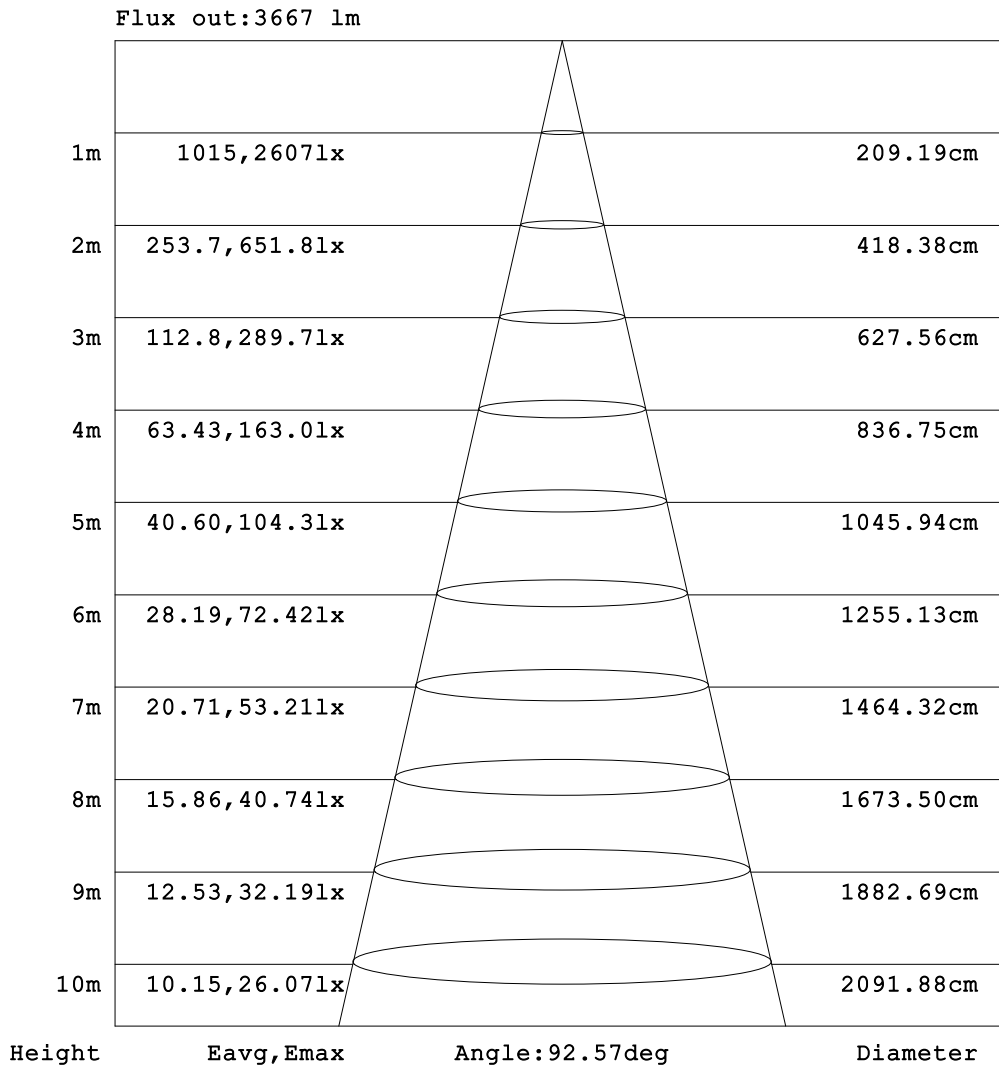


C Range: 0 - 360DEG
 C Interval: 45.0DEG
 Test Speed: HIGH
 Temperature:28.8DEG
 Operators:wudashuai
 Test Date:2021-11-04

γ Range: 0 - 180DEG
 γ Interval: 1.0DEG
 Test System:EVERFINE GO-2000A_V1 SYSTEM V2.0.364
 Humidity:66%
 Test Distance:6.500m [K=1.0000]
 Remarks:

AAI Figure

Test:U:121.5V I:0.3583A P:43.35W PF:0.9955 Freq:59.97Hz Lamp Flux:6916.9x1 lm		
NAME: ASD Lighting Corp	TYPE:	WEIGHT:
SPEC.:ASD-CAN07-45DAC-BZ-4000K	DIM.:	SERIAL No.:
MFR.: ASD Lighting Corp	SUR.:0.22*0.22m	Shielding Angle:

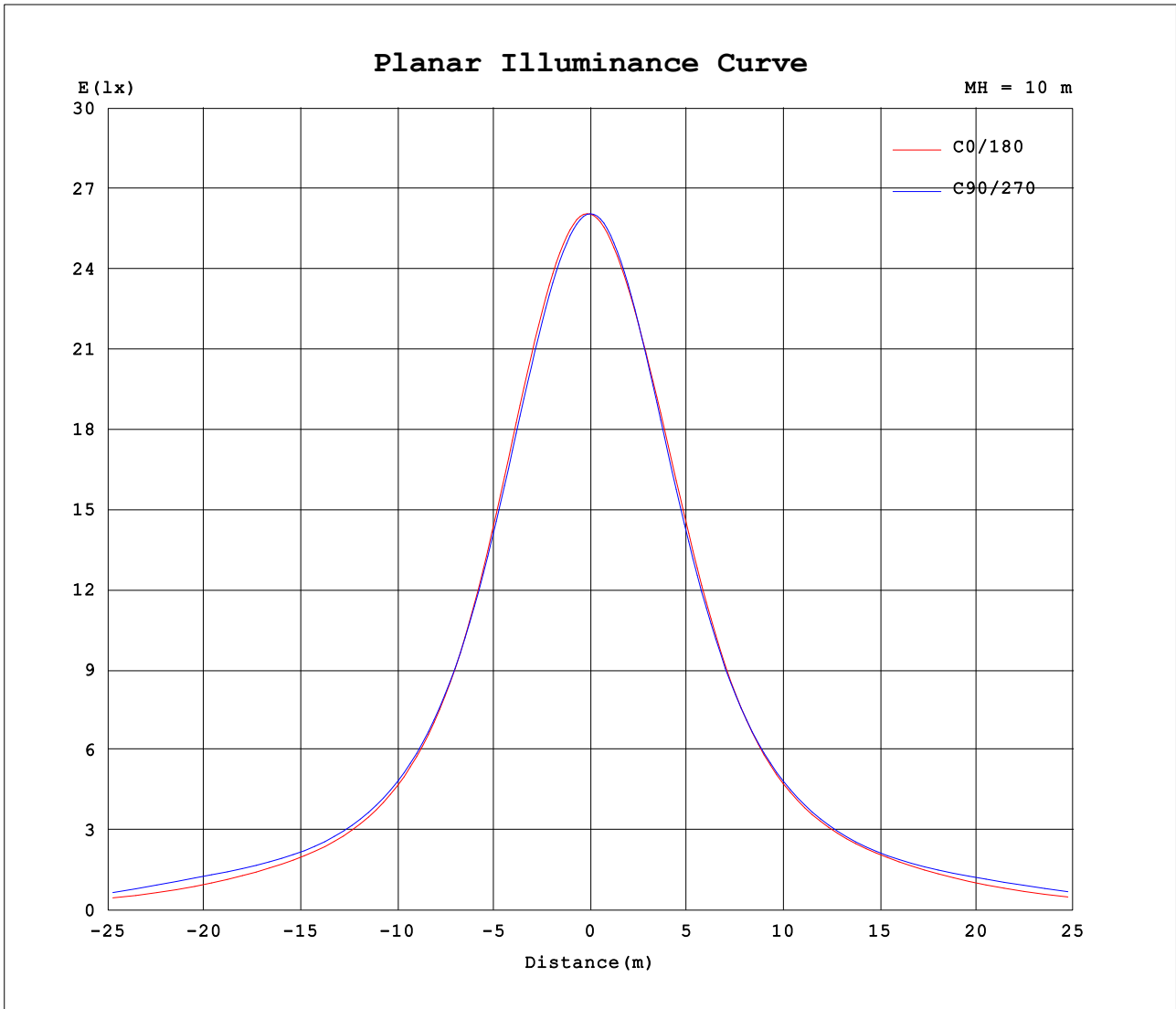


Note:The Curves indicate the illuminated area and the average illumination when the luminaire is at different distance.

C Range: 0 - 360DEG
 C Interval: 45.0DEG
 Test Speed: HIGH
 Temperature:28.8DEG
 Operators:wudashuai
 Test Date:2021-11-04

γ Range: 0 - 180DEG
 γ Interval: 1.0DEG
 Test System:EVERFINE GO-2000A_V1 SYSTEM V2.0.364
 Humidity:66%
 Test Distance:6.500m [K=1.0000]
 Remarks:

Planar Illuminance Curve



C Range: 0 - 360DEG
 C Interval: 45.0DEG
 Test Speed: HIGH
 Temperature: 28.8DEG
 Operators: wudashuai
 Test Date: 2021-11-04

γ Range: 0 - 180DEG
 γ Interval: 1.0DEG
 Test System: EVERFINE GO-2000A_V1 SYSTEM V2.0.364
 Humidity: 66%
 Test Distance: 6.500m [K=1.0000]
 Remarks:

LUMINOUS DISTRIBUTION INTENSITY DATA

Test:U:121.5V I:0.3583A P:43.35W PF:0.9955 Freq:59.97Hz Lamp Flux:6916.9x1 lm		
NAME: ASD Lighting Corp	TYPE:	WEIGHT:
SPEC.:ASD-CAN07-45DAC-BZ-4000K	DIM.:	SERIAL No.:
MFR.: ASD Lighting Corp	SUR.:0.22*0.22m	Shielding Angle:

Table--1

UNIT: cd

C (DEG) \ γ (DEG)	0	45	90	135	180	225	270	315										
0	2606	2606	2606	2606	2606	2606	2606	2606										
5	2598	2591	2577	2567	2565	2570	2579	2589										
10	2539	2531	2503	2489	2486	2493	2500	2521										
15	2431	2432	2384	2380	2378	2386	2375	2417										
20	2280	2283	2230	2245	2244	2244	2211	2279										
25	2088	2090	2045	2080	2076	2072	2028	2108										
30	1867	1877	1845	1892	1873	1882	1835	1913										
35	1651	1672	1654	1704	1666	1696	1645	1714										
40	1466	1502	1489	1531	1482	1534	1487	1540										
45	1322	1382	1363	1412	1344	1415	1370	1409										
50	1223	1310	1288	1347	1258	1344	1294	1334										
55	1175	1287	1275	1337	1229	1329	1264	1322										
60	1156	1296	1353	1362	1217	1345	1308	1343										
65	1038	1221	1441	1311	1104	1305	1402	1267										
70	806	765	1038	896	870	924	1170	808										
75	549	242	405	288	604	337	543	268										
80	144	96.8	120	110	169	123	161	107										
85	44.0	33.1	37.6	40.6	53.4	45.7	51.5	36.2										
90	6.00	5.13	5.54	6.58	6.84	7.27	6.12	5.29										
95	4.46	4.51	4.69	4.34	4.00	4.03	4.28	4.24										
100	5.21	5.34	5.50	5.18	4.80	4.83	5.08	5.05										
105	6.10	6.23	6.41	6.10	5.69	5.78	6.06	6.03										
110	7.00	7.11	7.30	7.00	6.58	6.70	7.01	6.94										
115	7.90	8.00	8.18	7.89	7.48	7.55	7.83	7.78										
120	8.83	8.88	9.05	8.82	8.38	8.41	8.64	8.61										
125	9.85	9.81	10.0	9.79	9.42	9.37	9.58	9.50										
130	11.0	10.9	11.2	10.9	10.6	10.5	10.8	10.6										
135	12.2	12.1	12.4	12.1	11.9	11.8	12.1	11.9										
140	13.4	13.4	13.6	13.3	13.1	13.0	13.3	13.2										
145	14.4	14.4	14.6	14.3	14.1	14.1	14.4	14.3										
150	15.2	15.2	15.4	15.1	15.0	15.0	15.3	15.1										
155	15.9	15.8	16.0	15.8	15.7	15.7	15.9	15.8										
160	16.5	16.3	16.6	16.3	16.3	16.3	16.5	16.4										
165	17.0	16.8	17.1	16.8	17.0	16.8	17.0	16.9										
170	17.5	17.3	17.5	17.3	17.5	17.3	17.5	17.4										
175	17.8	17.6	17.8	17.6	17.8	17.6	17.8	17.6										
180	18.0	17.8	18.0	17.8	18.0	17.8	18.0	17.8										

C Range: 0 - 360DEG
 C Interval: 45.0DEG
 Test Speed: HIGH
 Temperature:28.8DEG
 Operators:wudashuai
 Test Date:2021-11-04

γ Range: 0 - 180DEG
 γ Interval: 1.0DEG
 Test System:EVERFINE GO-2000A_V1 SYSTEM V2.0.364
 Humidity:66%
 Test Distance:6.500m [K=1.0000]
 Remarks: