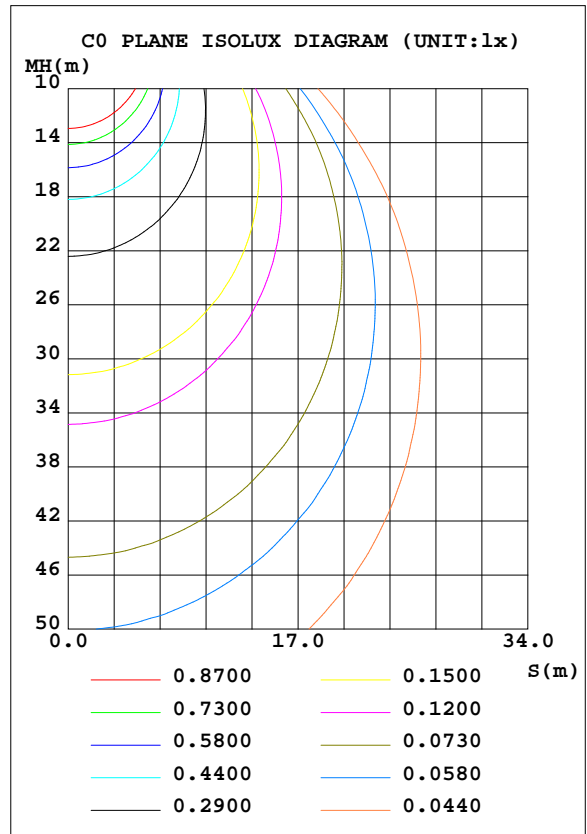
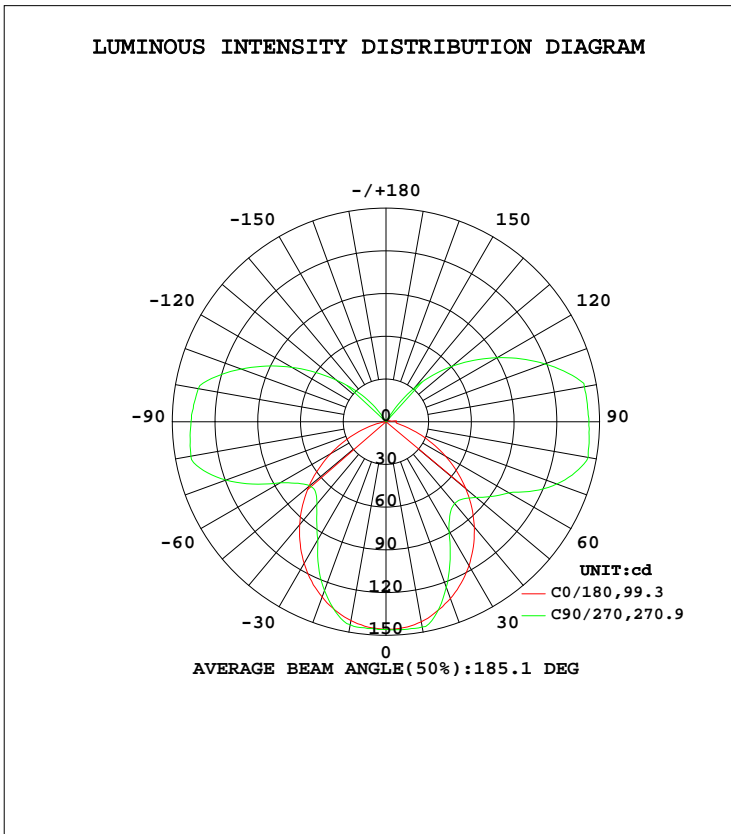


LUMINAIRE PHOTOMETRIC TEST REPORT

Test:U:120.01V I:0.0935A P:10.980W PF:0.9785 Freq:60.00Hz Lamp Flux:737.67lx1 lm		
NAME: ASD-LWS24W-14D12CC-BK 4000K	TYPE:N/A	WEIGHT:N/A
SPEC.:N/A	DIM.: N/A	SERIAL No.:N/A
MFR.: ASD Lighting corp	SUR.:N/A	Shielding Angle:N/A

DATA OF LAMP		PHOTOMETRIC DATA Eff: 67.18 lm/W			
MODEL	PSZ2S220516016-10	I _{max} (cd)	146.5	S/MH(C0/180)	1.20
NOMINAL POWER(W)		LOR(%)	100.0	S/MH(C90/270)	1.00
RATED VOLTAGE(V)	120	TOTAL FLUX(lm)	737.67	η UP, DN(C0-180)	15.1,33.2
NOMINAL FLUX(lm)	737.671	CIE CLASS	SEMI-D.	η UP, DN(C180-360)	17.3,34.4
LAMPS INSIDE	1	η up(%)	32.4	CIBSE SHR NOM	1.00
TEST VOLTAGE(V)	120	η down(%)	67.6	CIBSE SHR MAX	1.15



C Range: 0 - 360DEG
 C Interval: 22.5DEG
 Test Speed: HIGH
 Temperature:24.8DEG
 Operators:Hill
 Test Date:2022-05-21

γ Range: 0 - 180DEG
 γ Interval: 1.0DEG
 Test System:EVERFINE GO-R5000_V2 SYSTEM V2.0.351
 Humidity:40%
 Test Distance:2.526m [K=1.0000]
 Remarks:

ZONAL FLUX DIAGRAM

ZONAL FLUX DIAGRAM:

γ	C0	C45	C90	C135	C180	C225	C270	C315	γ	Φ zone	Φ total	%lum, lamp
10	141.7	143.2	144.8	143.9	142.7	144.9	146.4	143.8	0- 10	13.83	13.83	1.87,1.87
20	131.0	130.9	126.2	133.1	132.2	133.1	123.8	131.4	10- 20	39.04	52.86	7.17,7.17
30	114.9	106.2	95.86	109.0	116.7	104.5	88.55	102.7	20- 30	54.54	107.4	14.6,14.6
40	94.30	76.47	75.44	79.06	96.55	71.79	75.02	69.95	30- 40	58.13	165.5	22.4,22.4
50	70.64	56.15	69.95	58.20	73.28	58.28	82.79	55.12	40- 50	56.23	221.8	30.1,30.1
60	44.83	48.52	85.72	49.99	48.15	60.21	99.82	55.56	50- 60	55.65	277.4	37.6,37.6
70	20.30	59.52	119.7	60.37	24.44	71.34	127.7	64.99	60- 70	62.24	339.7	46,46
80	3.015	78.01	139.2	79.44	8.987	86.21	144.3	78.92	70- 80	76.14	415.8	56.4,56.4
90	0.0504	76.27	136.9	78.38	7.124	85.55	142.5	77.93	80- 90	82.99	498.8	67.6,67.6
100	0.0598	71.14	133.9	73.90	3.337	83.21	141.5	75.50	90-100	80.89	579.7	78.6,78.6
110	0.0680	51.32	108.3	53.21	2.355	64.58	118.8	57.85	100-110	68.61	648.3	87.9,87.9
120	0.0883	31.78	76.63	33.04	1.572	45.52	90.06	40.17	110-120	47.16	695.5	94.3,94.3
130	0.1270	14.85	45.75	15.41	1.014	25.38	60.68	21.68	120-130	27.36	722.8	98,98
140	0.1824	0.8192	20.15	1.386	0.6367	2.988	30.99	2.401	130-140	12.08	734.9	99.6,99.6
150	0.2653	0.5555	0.7419	0.8558	0.3961	0.8589	1.949	0.4517	140-150	2.396	737.3	99.9,99.9
160	0.3205	0.5084	0.6084	0.6184	0.2515	0.4121	0.4796	0.4945	150-160	0.2434	737.5	100,100
170	0.3011	0.3269	0.3857	0.3356	0.1872	0.2189	0.2826	0.2688	160-170	0.1108	737.6	100,100
180	0.2464	0.2289	0.2241	0.2343	0.2478	0.2432	0.2219	0.2213	170-180	0.0248	737.7	100,100
DEG	LUMINOUS INTENSITY:cd									UNIT:lm		

Conical surface Flux(90deg): 193.93 lm

%lum = 26.3%
%lamp = 26.3%

Conical surface Flux(120deg): 277.42 lm

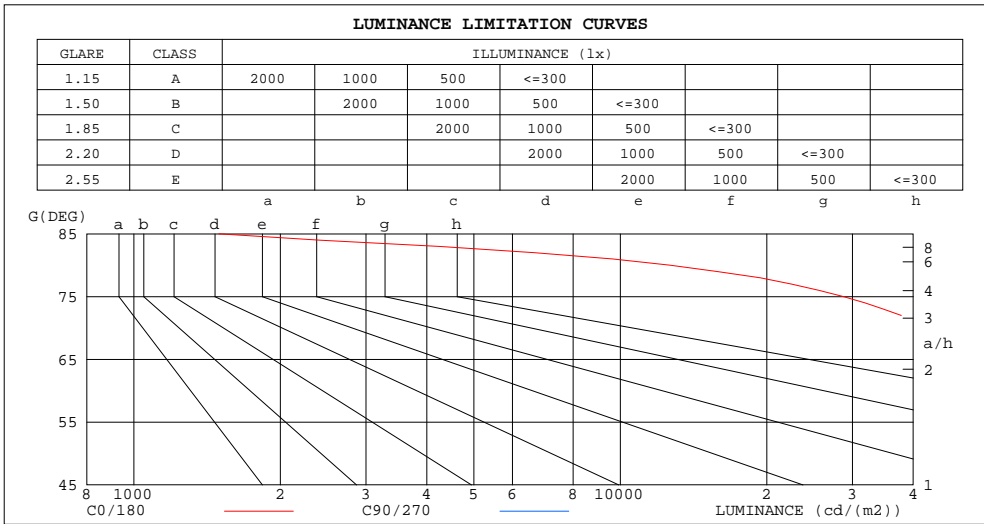
%lum = 37.6%
%lamp = 37.6%

C Range: 0 - 360DEG
C Interval: 22.5DEG
Test Speed: HIGH
Temperature:24.8DEG
Operators:Hill
Test Date:2022-05-21

γ Range: 0 - 180DEG
γ Interval: 1.0DEG
Test System:EVERFINE GO-R5000_V2 SYSTEM V2.0.351
Humidity:40%
Test Distance:2.526m [K=1.0000]
Remarks:

LUMINANCE LIMITATION CURVES

Test:U:120.01V I:0.0935A P:10.980W PF:0.9785 Freq:60.00Hz Lamp Flux:737.671x1 lm		
NAME: ASD-LWS24W-14D12CC-BK 4000K	TYPE:N/A	WEIGHT:N/A
SPEC.:N/A	DIM.: N/A	SERIAL No.:N/A
MFR.: ASD Lighting corp	SUR.:N/A	Shielding Angle:N/A



LUMINANCE cd/(m2)		
G(DEG)	C0/180	C90/270
85	1497	1151526
80	12654	582896
75	28737	372404
70	43264	254500
65	55494	177999
60	65352	124681
55	73453	95608
50	80103	79141
45	85368	71958

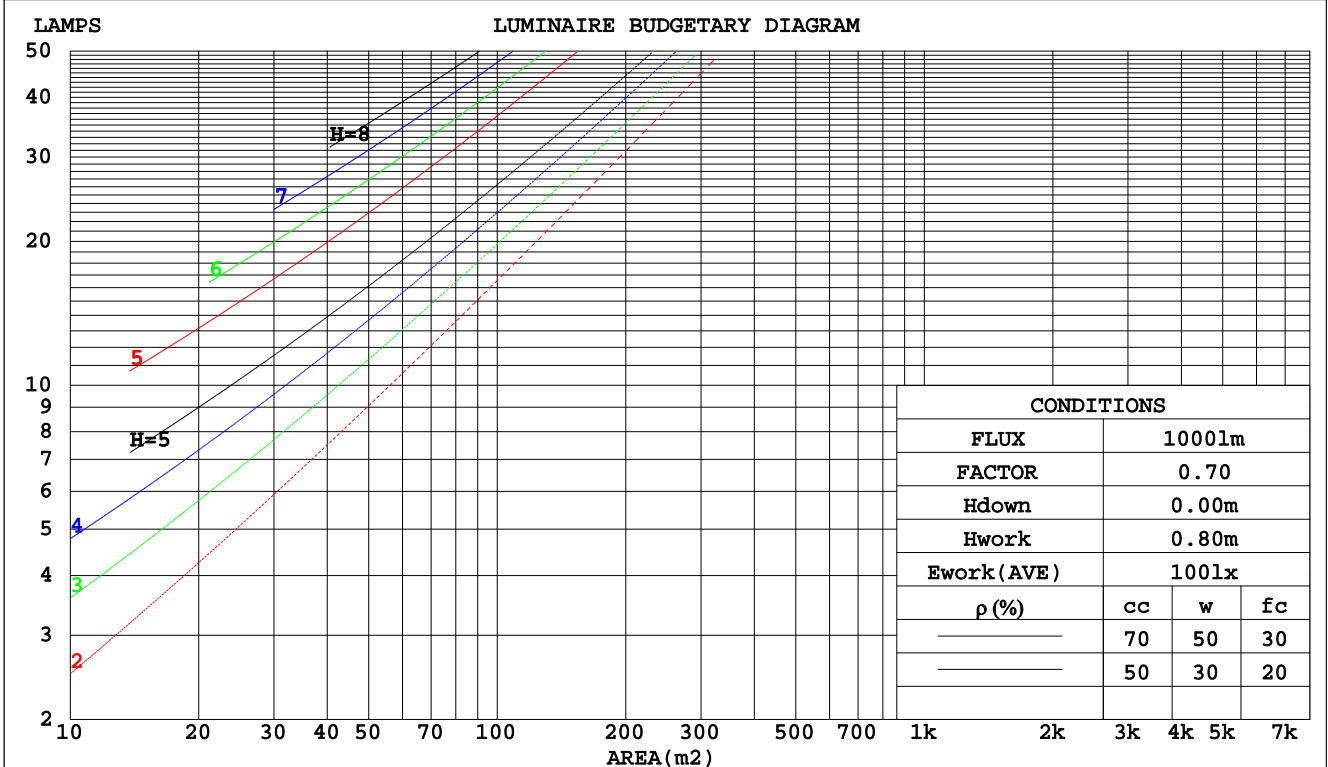
C Range: 0 - 360DEG
 C Interval: 22.5DEG
 Test Speed: HIGH
 Temperature:24.8DEG
 Operators:Hill
 Test Date:2022-05-21

γ Range: 0 - 180DEG
 γ Interval: 1.0DEG
 Test System:EVERFINE GO-R5000_V2 SYSTEM V2.0.351
 Humidity:40%
 Test Distance:2.526m [K=1.0000]
 Remarks:

CU AND LUMINAIRE BUDGETARY ESTIMATE DIAGRAM

Test:U:120.01V I:0.0935A P:10.980W PF:0.9785 Freq:60.00Hz Lamp Flux:737.671x1 lm		
NAME: ASD-LWS24W-14D12CC-BK 4000K	TYPE:N/A	WEIGHT:N/A
SPEC.:N/A	DIM.: N/A	SERIAL No.:N/A
MFR.: ASD Lighting corp	SUR.:N/A	Shielding Angle:N/A

pcc	80%			70%			50%			30%			10%			0
	50%	30%	10%	50%	30%	10%	50%	30%	10%	50%	30%	10%	50%	30%	10%	0
pw																0
pfc	20%			20%			20%			20%			20%			0
RCR	RCR:Room Cavity Ratio															
	Coefficients of Utilization(CU)															
0.0	1.11	1.11	1.11	1.05	1.05	1.05	.93	.93	.93	.82	.82	.82	.72	.72	.72	.68
1.0	.90	.84	.79	.85	.80	.75	.74	.70	.66	.65	.62	.59	.56	.54	.51	.47
2.0	.77	.69	.62	.72	.65	.59	.63	.57	.52	.55	.50	.46	.47	.44	.41	.36
3.0	.67	.58	.50	.63	.54	.48	.55	.48	.43	.48	.43	.38	.41	.37	.33	.30
4.0	.59	.49	.42	.55	.47	.40	.49	.42	.36	.42	.37	.32	.37	.32	.28	.25
5.0	.52	.43	.36	.49	.41	.34	.43	.36	.31	.38	.32	.28	.33	.28	.25	.21
6.0	.47	.38	.31	.44	.36	.30	.39	.32	.27	.34	.29	.24	.30	.25	.22	.19
7.0	.43	.34	.27	.40	.32	.26	.36	.29	.24	.31	.26	.21	.28	.23	.19	.17
8.0	.39	.30	.24	.37	.29	.23	.33	.26	.21	.29	.23	.19	.25	.21	.17	.15
9.0	.36	.27	.22	.34	.26	.21	.30	.24	.19	.27	.21	.17	.24	.19	.16	.13
10.0	.33	.25	.20	.31	.24	.19	.28	.22	.17	.25	.20	.16	.22	.18	.14	.12



C Range: 0 - 360DEG
 C Interval: 22.5DEG
 Test Speed: HIGH
 Temperature:24.8DEG
 Operators:Hill
 Test Date:2022-05-21

γ Range: 0 - 180DEG
 γ Interval: 1.0DEG
 Test System:EVERFINE GO-R5000_V2 SYSTEM V2.0.351
 Humidity:40%
 Test Distance:2.526m [K=1.0000]
 Remarks:

WEC AND CCEC

Test:U:120.01V I:0.0935A P:10.980W PF:0.9785 Freq:60.00Hz Lamp Flux:737.671x1 lm		
NAME: ASD-LWS24W-14D12CC-BK 4000K	TYPE:N/A	WEIGHT:N/A
SPEC.:N/A	DIM.: N/A	SERIAL No.:N/A
MFR.: ASD Lighting corp	SUR.:N/A	Shielding Angle:N/A

ρcc	80%			70%			50%			30%			10%			0
ρw	50%	30%	10%	50%	30%	10%	50%	30%	10%	50%	30%	10%	50%	30%	10%	0
ρfc	20%			20%			20%			20%			20%			0
RCR	RCR:Room Cavity Ratio						Wall Exitance Coefficients(WEC)									
0.0																
1.0	.422	.240	.076	.404	.231	.073	.372	.214	.068	.343	.198	.063	.316	.183	.059	
2.0	.347	.190	.058	.331	.183	.056	.302	.168	.052	.275	.154	.048	.250	.142	.045	
3.0	.300	.160	.048	.286	.153	.046	.260	.141	.043	.235	.129	.040	.212	.118	.036	
4.0	.266	.138	.041	.254	.133	.039	.229	.122	.036	.207	.111	.034	.186	.101	.031	
5.0	.240	.122	.035	.228	.117	.034	.206	.107	.032	.185	.098	.029	.166	.089	.027	
6.0	.218	.110	.031	.208	.105	.030	.187	.096	.028	.168	.088	.026	.151	.079	.024	
7.0	.201	.099	.028	.191	.095	.027	.172	.087	.025	.155	.079	.023	.138	.072	.021	
8.0	.186	.091	.025	.176	.087	.025	.159	.080	.023	.143	.072	.021	.128	.066	.019	
9.0	.173	.083	.023	.164	.080	.022	.148	.073	.021	.133	.067	.019	.119	.060	.017	
10.0	.161	.077	.021	.154	.074	.021	.139	.068	.019	.125	.062	.018	.111	.056	.016	

ρcc	80%			70%			50%			30%			10%			0
ρw	50%	30%	10%	50%	30%	10%	50%	30%	10%	50%	30%	10%	50%	30%	10%	0
ρfc	20%			20%			20%			20%			20%			0
RCR	RCR:Room Cavity Ratio						Ceiling Cavity Exitance Coefficients(CCEC)									
0.0	.437	.437	.437	.374	.374	.374	.255	.255	.255	.147	.147	.147	.047	.047	.047	
1.0	.437	.404	.374	.374	.347	.322	.256	.238	.223	.147	.138	.130	.047	.044	.042	
2.0	.430	.382	.342	.368	.329	.295	.252	.228	.206	.146	.132	.121	.047	.043	.039	
3.0	.422	.366	.322	.362	.316	.279	.248	.220	.196	.143	.128	.115	.046	.042	.038	
4.0	.414	.354	.309	.355	.306	.268	.244	.213	.189	.141	.125	.112	.045	.041	.037	
5.0	.406	.345	.300	.349	.298	.261	.240	.208	.184	.139	.122	.109	.045	.040	.036	
6.0	.398	.337	.293	.342	.292	.255	.236	.204	.181	.137	.120	.107	.044	.039	.035	
7.0	.391	.331	.288	.337	.287	.251	.233	.201	.178	.135	.118	.106	.044	.039	.035	
8.0	.385	.325	.284	.331	.282	.248	.229	.198	.176	.133	.117	.105	.043	.038	.035	
9.0	.378	.321	.281	.326	.278	.246	.226	.196	.174	.132	.115	.104	.043	.038	.034	
10.0	.373	.316	.279	.321	.275	.244	.223	.193	.173	.130	.114	.103	.042	.038	.034	

C Range: 0 - 360DEG
 C Interval: 22.5DEG
 Test Speed: HIGH
 Temperature:24.8DEG
 Operators:Hill
 Test Date:2022-05-21

γ Range: 0 - 180DEG
 γ Interval: 1.0DEG
 Test System:EVERFINE GO-R5000_V2 SYSTEM V2.0.351
 Humidity:40%
 Test Distance:2.526m [K=1.0000]
 Remarks:

UGR(Unified Glare Rating) Table

Test:U:120.01V I:0.0935A P:10.980W PF:0.9785 Freq:60.00Hz Lamp Flux:737.671x1 lm										
NAME: ASD-LWS24W-14D12CC-BK 4000K					TYPE:N/A			WEIGHT:N/A		
SPEC.:N/A					DIM.: N/A			SERIAL No.:N/A		
MFR.: ASD Lighting corp					SUR.:N/A			Shielding Angle:N/A		
ceiling/cavity	0.7	0.7	0.5	0.5	0.3	0.7	0.7	0.5	0.5	0.3
walls	0.5	0.3	0.5	0.3	0.3	0.5	0.3	0.5	0.3	0.3
working plane	0.2	0.2	0.2	0.2	0.2	0.2	0.2	0.2	0.2	0.2
Room dimensions	Viewed crosswise					Viewed endwise				
x = 2H y = 2H	24.6	25.8	25.3	26.5	27.4	27.7	28.9	28.3	29.6	30.4
3H	25.5	26.6	26.2	27.3	28.2	32.6	33.7	33.3	34.4	35.3
4H	25.8	26.8	26.5	27.6	28.5	35.2	36.3	36.0	37.0	37.9
6H	26.0	27.0	26.7	27.7	28.6	38.0	39.0	38.7	39.8	40.7
8H	26.0	27.0	26.7	27.7	28.7	39.4	40.3	40.1	41.1	42.0
12H	26.0	26.9	26.8	27.7	28.7	40.9	41.8	41.6	42.6	43.5
4H 2H	25.8	26.9	26.5	27.6	28.5	28.1	29.2	28.8	29.9	30.8
3H	27.2	28.1	27.9	28.9	29.8	33.3	34.3	34.1	35.1	36.0
4H	27.7	28.5	28.5	29.3	30.3	36.3	37.1	37.0	37.9	38.9
6H	28.2	28.9	29.0	29.8	30.8	39.2	40.0	40.0	40.8	41.8
8H	28.4	29.1	29.2	29.9	31.0	40.7	41.5	41.6	42.3	43.3
12H	28.6	29.2	29.4	30.1	31.1	42.4	43.0	43.2	43.9	44.9
8H 4H	30.9	31.7	31.8	32.5	33.5	36.6	37.3	37.4	38.1	39.1
6H	32.1	32.7	32.9	33.6	34.6	39.9	40.5	40.7	41.4	42.4
8H	32.5	33.1	33.4	34.0	35.0	41.6	42.2	42.5	43.1	44.1
12H	32.9	33.4	33.7	34.3	35.4	43.5	44.0	44.4	44.9	46.0
12H 4H	32.2	32.9	33.1	33.8	34.8	36.5	37.2	37.4	38.1	39.1
6H	33.8	34.4	34.7	35.3	36.3	40.0	40.5	40.8	41.4	42.5
8H	34.6	35.1	35.5	36.0	37.1	41.8	42.3	42.7	43.2	44.3
Variations with the observer position at spacings:										
S = 1.0H	+ 0.1 / - 0.1					+ 0.1 / - 0.1				
1.5H	+ 0.1 / - 0.1					+ 0.2 / - 0.3				
2.0H	+ 0.2 / - 0.2					+ 0.3 / - 0.3				

CIE Pub.117, 737.7 lm Total Lamp Luminous Flux Correct (8log(F/F0) = -1.1)

C Range: 0 - 360DEG
 C Interval: 22.5DEG
 Test Speed: HIGH
 Temperature:24.8DEG
 Operators:Hill
 Test Date:2022-05-21

γ Range: 0 - 180DEG
 γ Interval: 1.0DEG
 Test System:EVERFINE GO-R5000_V2 SYSTEM V2.0.351
 Humidity:40%
 Test Distance:2.526m [K=1.0000]
 Remarks:

UTILIZATION FACTORS TABLE

Test:U:120.01V I:0.0935A P:10.980W PF:0.9785 Freq:60.00Hz Lamp Flux:737.671x1 lm		
NAME: ASD-LWS24W-14D12CC-BK 4000K	TYPE:N/A	WEIGHT:N/A
SPEC.:N/A	DIM.: N/A	SERIAL No.:N/A
MFR.: ASD Lighting corp	SUR.:N/A	Shielding Angle:N/A

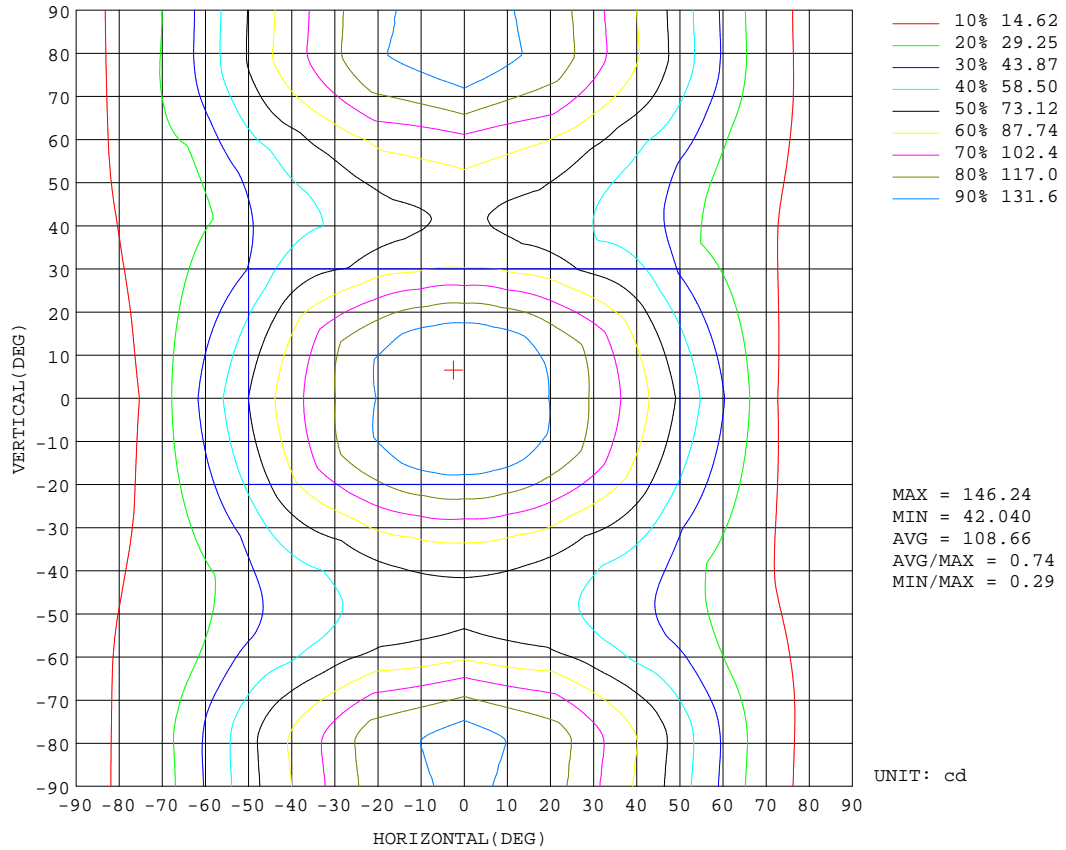
REFLECTANCE										
Ceiling	0.8	0.8	0.8	0.7	0.7	0.7	0.5	0.5	0.5	0
Walls	0.7	0.5	0.3	0.7	0.5	0.3	0.7	0.5	0.3	0
Working plane	0.2	0.2	0.2	0.2	0.2	0.2	0.2	0.2	0.2	0
ROOM INDEX	UTILIZATION FACTORS(PERCENT) $k(RI) \times RCR = 5$									
k = 0.60	44	31	24	42	31	24	40	30	23	17
0.80	52	38	30	50	38	30	47	36	29	21
1.00	59	45	36	56	44	35	52	43	34	25
1.25	65	51	42	62	50	41	57	46	39	28
1.50	70	57	47	67	55	46	61	51	43	31
2.00	77	65	55	73	62	53	66	57	50	36
2.50	82	70	61	77	67	59	70	61	54	39
3.00	86	75	66	81	71	63	72	65	58	41
4.00	91	81	73	85	77	70	76	70	64	45
5.00	94	86	78	88	81	75	79	73	68	48
ROOM INDEX	UF(total)									Direct
According to DIN EN 13032-2 2004			Suspended				SHRNOM = 1.25			

C Range: 0 - 360DEG
 C Interval: 22.5DEG
 Test Speed: HIGH
 Temperature:24.8DEG
 Operators:Hill
 Test Date:2022-05-21

γ Range: 0 - 180DEG
 γ Interval: 1.0DEG
 Test System:EVERFINE GO-R5000_V2 SYSTEM V2.0.351
 Humidity:40%
 Test Distance:2.526m [K=1.0000]
 Remarks:

ISOCANDELA DIAGRAM

Test:U:120.01V I:0.0935A P:10.980W PF:0.9785 Freq:60.00Hz Lamp Flux:737.671x1 lm		
NAME: ASD-LWS24W-14D12CC-BK 4000K	TYPE:N/A	WEIGHT:N/A
SPEC.:N/A	DIM.: N/A	SERIAL No.:N/A
MFR.: ASD Lighting corp	SUR.:N/A	Shielding Angle:N/A

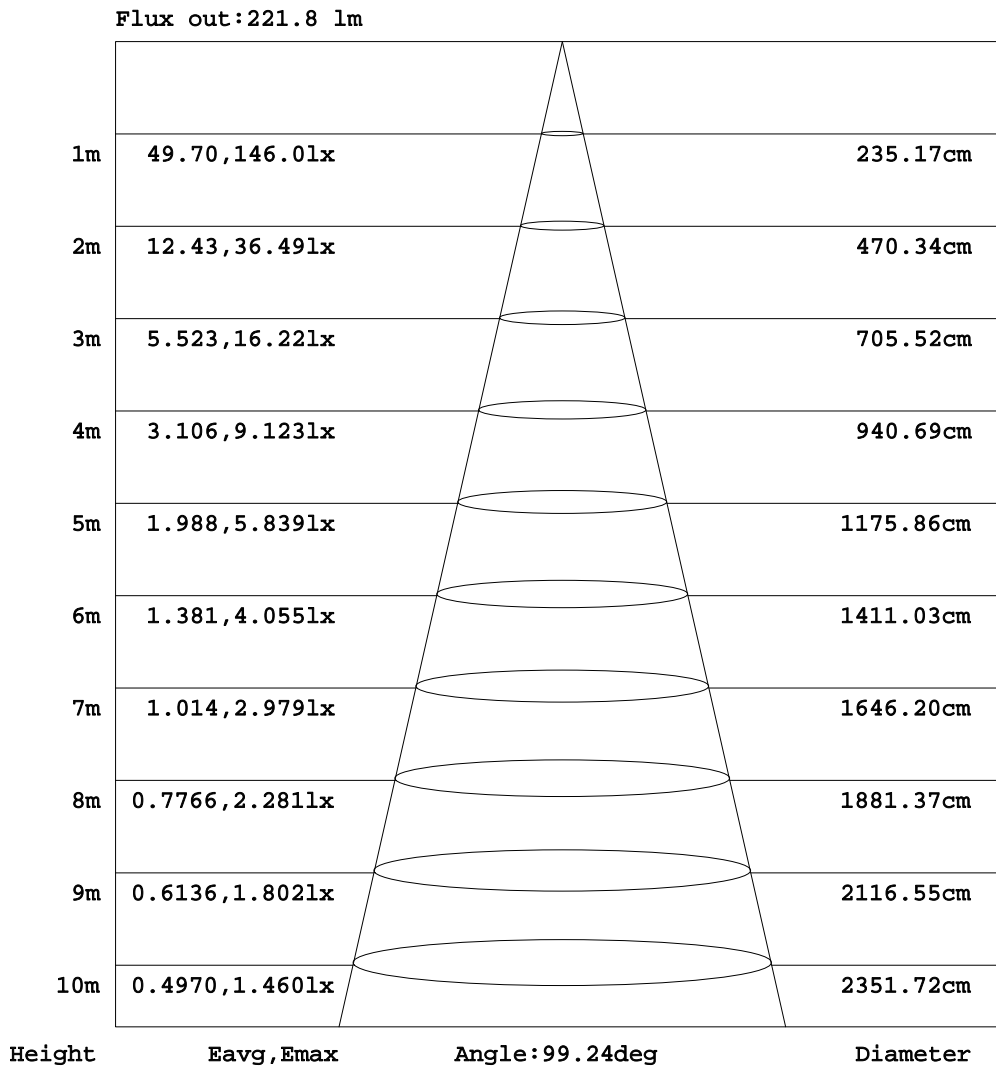


C Range: 0 - 360DEG
 C Interval: 22.5DEG
 Test Speed: HIGH
 Temperature:24.8DEG
 Operators:Hill
 Test Date:2022-05-21

γ Range: 0 - 180DEG
 γ Interval: 1.0DEG
 Test System:EVERFINE GO-R5000_V2 SYSTEM V2.0.351
 Humidity:40%
 Test Distance:2.526m [K=1.0000]
 Remarks:

AAI Figure

Test:U:120.01V I:0.0935A P:10.980W PF:0.9785 Freq:60.00Hz Lamp Flux:737.67lx1 lm		
NAME: ASD-LWS24W-14D12CC-BK 4000K	TYPE:N/A	WEIGHT:N/A
SPEC.:N/A	DIM.: N/A	SERIAL No.:N/A
MFR.: ASD Lighting corp	SUR.:N/A	Shielding Angle:N/A



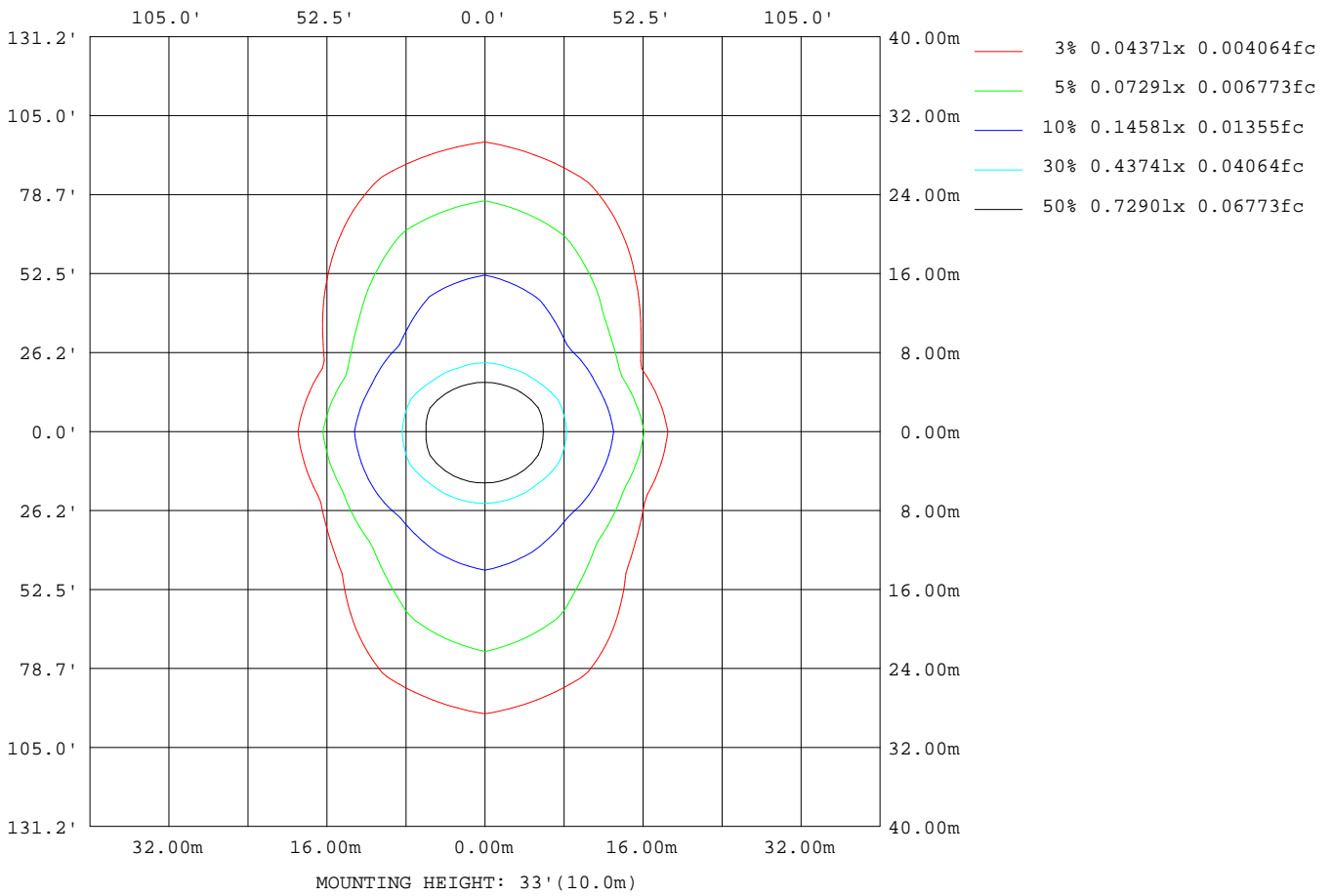
Note:The Curves indicate the illuminated area and the average illumination when the luminaire is at different distance.

C Range: 0 - 360DEG
 C Interval: 22.5DEG
 Test Speed: HIGH
 Temperature:24.8DEG
 Operators:Hill
 Test Date:2022-05-21

γ Range: 0 - 180DEG
 γ Interval: 1.0DEG
 Test System:EVERFINE GO-R5000_V2 SYSTEM V2.0.351
 Humidity:40%
 Test Distance:2.526m [K=1.0000]
 Remarks:

ISOLUX DIAGRAM

Test:U:120.01V I:0.0935A P:10.980W PF:0.9785 Freq:60.00Hz Lamp Flux:737.671x1 lm		
NAME: ASD-LWS24W-14D12CC-BK 4000K	TYPE:N/A	WEIGHT:N/A
SPEC.:N/A	DIM.: N/A	SERIAL No.:N/A
MFR.: ASD Lighting corp	SUR.:N/A	Shielding Angle:N/A



C Range: 0 - 360DEG
 C Interval: 22.5DEG
 Test Speed: HIGH
 Temperature:24.8DEG
 Operators:Hill
 Test Date:2022-05-21

γ Range: 0 - 180DEG
 γ Interval: 1.0DEG
 Test System:EVERFINE GO-R5000_V2 SYSTEM V2.0.351
 Humidity:40%
 Test Distance:2.526m [K=1.0000]
 Remarks:

LED Avg.L Report

Test:U:120.01V I:0.0935A P:10.980W PF:0.9785 Freq:60.00Hz Lamp Flux:737.671x1 lm		
NAME: ASD-LWS24W-14D12CC-BK 4000K	TYPE:N/A	WEIGHT:N/A
SPEC.:N/A	DIM.: N/A	SERIAL No.:N/A
MFR.: ASD Lighting corp	SUR.:N/A	Shielding Angle:N/A

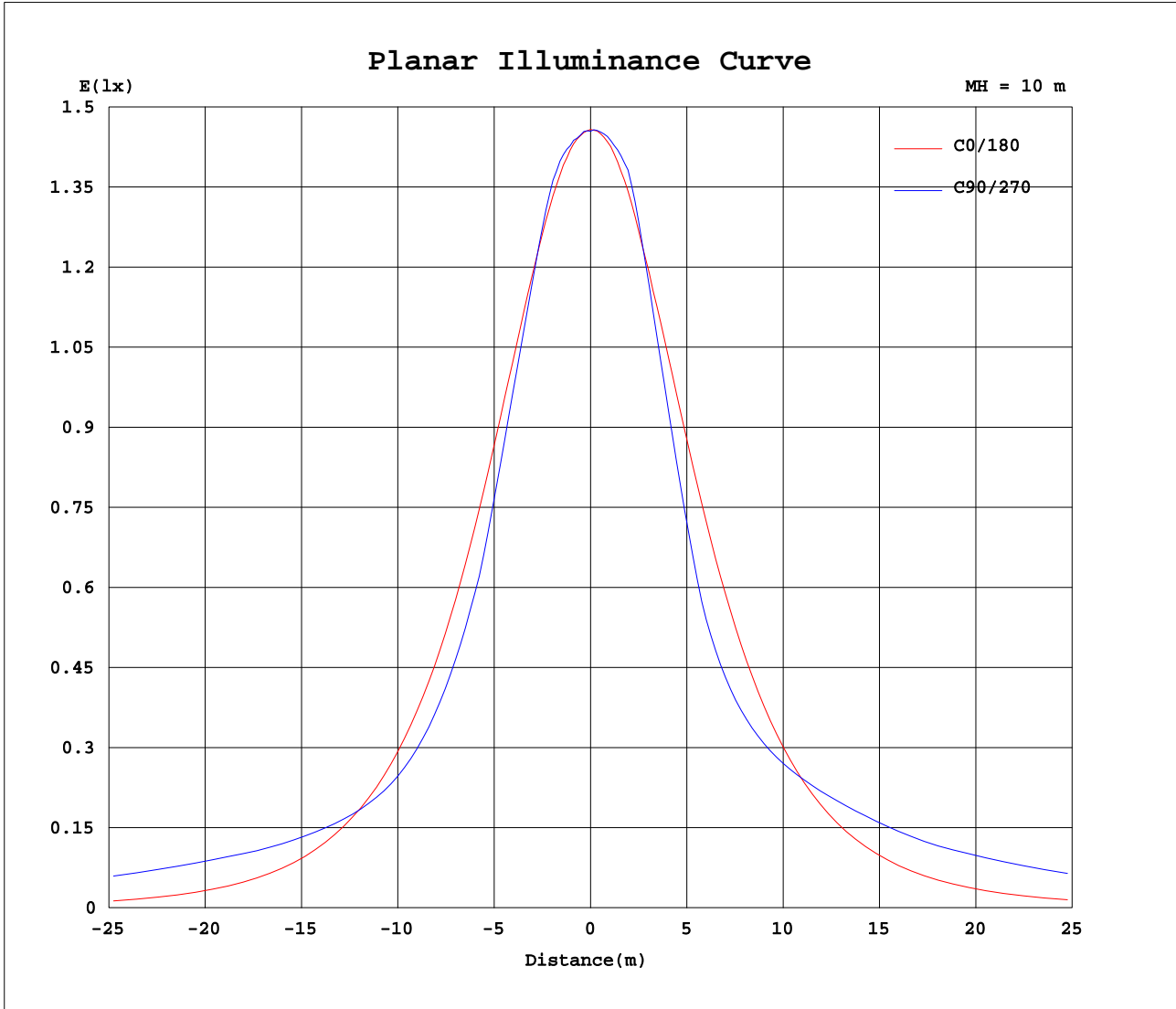
AvgL	cd/m2
L_0~180(65)av	58634
L_0~180(75)av	35554
L_0~180(85)av	31150
L_90~270(65)av	188174
L_90~270(75)av	380212
L_90~270(85)av	1175642
L_45(65)av	97586
L_45(75)av	207823
L_45(85)av	677265

Standard: GB/T 29293-2012

C Range: 0 - 360DEG
 C Interval: 22.5DEG
 Test Speed: HIGH
 Temperature:24.8DEG
 Operators:Hill
 Test Date:2022-05-21

γ Range: 0 - 180DEG
 γ Interval: 1.0DEG
 Test System:EVERFINE GO-R5000_V2 SYSTEM V2.0.351
 Humidity:40%
 Test Distance:2.526m [K=1.0000]
 Remarks:

Planar Illuminance Curve



C Range: 0 - 360DEG
 C Interval: 22.5DEG
 Test Speed: HIGH
 Temperature: 24.8DEG
 Operators: Hill
 Test Date: 2022-05-21

γ Range: 0 - 180DEG
 γ Interval: 1.0DEG
 Test System: EVERFINE GO-R5000_V2 SYSTEM V2.0.351
 Humidity: 40%
 Test Distance: 2.526m [K=1.0000]
 Remarks:

LUMINOUS DISTRIBUTION INTENSITY DATA

Test:U:120.01V I:0.0935A P:10.980W PF:0.9785 Freq:60.00Hz Lamp Flux:737.671x1 lm		
NAME: ASD-LWS24W-14D12CC-BK 4000K	TYPE:N/A	WEIGHT:N/A
SPEC.:N/A	DIM.: N/A	SERIAL No.:N/A
MFR.: ASD Lighting corp	SUR.:N/A	Shielding Angle:N/A

Table--1

UNIT: cd

C(DEG) γ (DEG)	0	22.5	45	67.5	90	112.5	135	157.5	180	202.5	225	247.5	270	292.5	315	337.5			
0	146	146	146	146	146	146	146	146	146	146	146	146	146	146	146	146			
5	145	145	145	145	146	145	145	145	145	145	146	146	146	146	145	145			
10	142	142	143	144	145	145	144	143	143	144	145	146	146	145	144	142			
15	137	138	140	138	138	139	141	140	138	140	143	140	139	139	142	137			
20	131	133	131	127	126	128	133	135	132	135	133	126	124	125	131	132			
25	124	126	120	114	112	115	122	129	125	129	120	110	107	109	118	125			
30	115	116	106	98.0	95.9	99.2	109	120	117	120	104	92.2	88.6	91.3	103	116			
35	105	104	91.3	85.1	84.8	85.9	94.0	108	107	107	87.9	78.6	78.7	77.4	86.1	104			
40	94.3	91.0	76.5	74.7	75.4	75.7	79.1	95.2	96.5	93.3	71.8	72.3	75.0	71.0	70.0	90.0			
45	82.8	77.2	65.4	67.3	70.0	68.1	67.8	81.6	85.2	77.7	62.8	71.3	76.7	69.5	60.3	75.1			
50	70.6	63.1	56.2	64.3	69.9	64.9	58.2	67.3	73.3	62.4	58.3	74.9	82.8	72.5	55.1	59.8			
55	57.8	48.3	50.3	66.6	75.4	66.9	52.1	52.7	60.7	47.6	57.7	81.4	91.4	78.5	53.7	45.1			
60	44.8	36.8	48.5	73.6	85.7	73.8	50.0	40.4	48.2	36.5	60.2	88.6	99.8	85.3	55.6	32.8			
65	32.2	27.8	51.1	87.4	103	87.4	52.3	31.1	35.8	30.4	64.2	99.7	115	95.6	58.8	25.6			
70	20.3	21.9	59.5	102	120	103	60.4	25.0	24.4	28.1	71.3	112	128	108	65.0	22.0			
75	10.2	20.1	70.1	115	133	115	71.4	23.1	15.0	28.5	80.3	122	138	117	73.4	21.6			
80	3.01	23.6	78.0	122	139	123	79.4	26.5	8.99	32.0	86.2	129	144	124	78.9	24.2			
85	0.18	26.1	78.1	121	138	122	79.9	29.6	7.27	33.6	86.7	128	143	122	79.2	25.5			
90	0.05	23.9	76.3	120	137	120	78.4	28.0	7.12	32.1	85.6	127	143	122	77.9	23.7			
95	0.05	22.8	74.7	118	136	119	77.2	27.8	7.64	32.3	85.5	127	142	121	77.8	23.4			
100	0.06	19.0	71.1	116	134	118	73.9	24.2	3.34	28.7	83.2	126	142	121	75.5	20.0			
105	0.06	14.4	61.6	105	123	106	63.7	19.3	2.80	24.5	74.1	117	132	112	66.8	16.2			
110	0.07	9.99	51.3	91.6	108	92.4	53.2	14.4	2.35	19.8	64.6	104	119	99.8	57.8	12.3			
115	0.07	5.86	41.4	77.5	92.7	77.9	42.9	9.55	1.94	14.5	55.0	91.4	105	87.1	48.9	7.77			
120	0.09	1.61	31.8	63.2	76.6	63.5	33.0	4.91	1.57	7.82	45.5	78.0	90.1	74.3	40.2	2.38			
125	0.10	0.48	23.1	49.1	60.6	49.2	24.0	3.25	1.27	3.45	35.7	64.7	75.4	61.6	31.2	0.44			
130	0.13	0.41	14.9	36.5	45.7	36.6	15.4	2.51	1.01	2.64	25.4	51.3	60.7	48.9	21.7	0.39			
135	0.15	0.43	6.32	25.0	32.4	25.0	6.60	2.01	0.81	2.09	13.4	37.7	46.0	36.0	10.9	0.40			
140	0.18	0.45	0.82	13.7	20.1	13.7	1.39	1.64	0.64	1.51	2.99	22.6	31.0	22.3	2.40	0.41			
145	0.23	0.42	0.55	3.03	7.76	3.03	0.99	1.30	0.50	0.92	1.02	6.45	14.5	8.20	0.50	0.42			
150	0.27	0.42	0.56	0.64	0.74	0.67	0.86	1.02	0.40	0.52	0.86	0.60	1.95	0.69	0.45	0.38			
155	0.30	0.38	0.58	0.58	0.58	0.59	0.77	0.73	0.32	0.30	0.65	0.54	0.48	0.47	0.48	0.37			
160	0.32	0.37	0.51	0.60	0.61	0.60	0.62	0.55	0.25	0.25	0.41	0.52	0.48	0.49	0.49	0.36			
165	0.32	0.35	0.42	0.50	0.52	0.50	0.46	0.42	0.21	0.22	0.24	0.35	0.40	0.42	0.38	0.29			
170	0.30	0.31	0.33	0.36	0.39	0.36	0.34	0.33	0.19	0.19	0.22	0.23	0.28	0.31	0.27	0.23			
175	0.28	0.27	0.27	0.29	0.29	0.29	0.28	0.28	0.21	0.21	0.22	0.21	0.21	0.22	0.22	0.21			
180	0.25	0.24	0.23	0.22	0.22	0.22	0.23	0.25	0.25	0.25	0.24	0.23	0.22	0.22	0.22	0.23			

C Range: 0 - 360DEG
 C Interval: 22.5DEG
 Test Speed: HIGH
 Temperature:24.8DEG
 Operators:Hill
 Test Date:2022-05-21

γ Range: 0 - 180DEG
 γ Interval: 1.0DEG
 Test System:EVERFINE GO-R5000_V2 SYSTEM V2.0.351
 Humidity:40%
 Test Distance:2.526m [K=1.0000]
 Remarks: