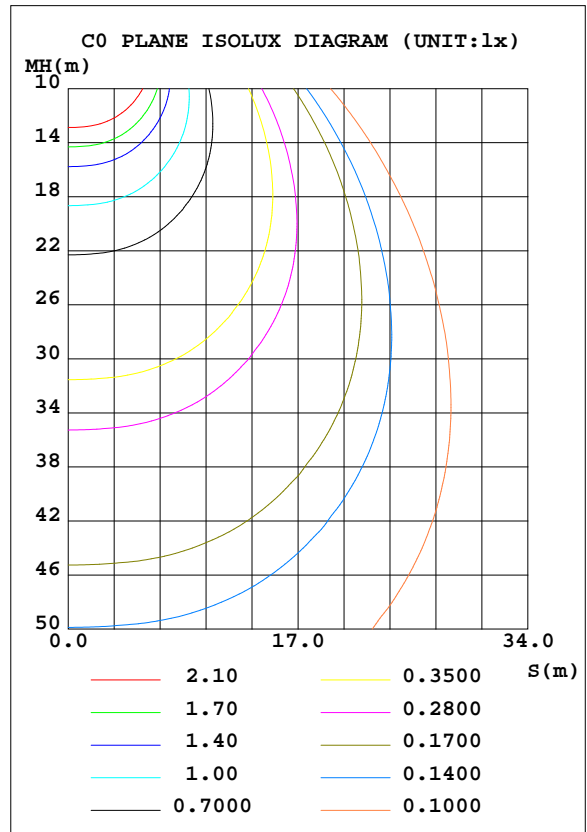
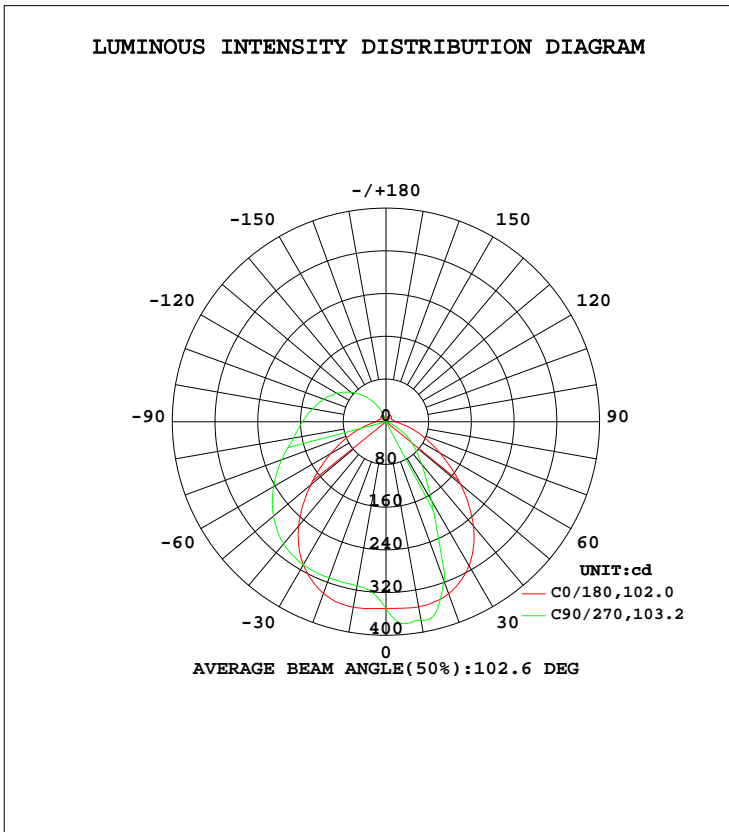


LUMINAIRE PHOTOMETRIC TEST REPORT

Test:U:120.1V I:0.1914A P:22.38W PF:0.9738 Lamp Flux:1297.11x1 lm		
NAME: LED luminaires	TYPE:N/A	WEIGHT:N/A
SPEC.:ASD-LVF24M-4D23CC-BK 4000K	DIM.: N/A	SERIAL No.:N/A
MFR.:ASD Lighting corp	SUR.:N/A	Shielding Angle:N/A

DATA OF LAMP		PHOTOMETRIC DATA Eff: 57.96 lm/W			
MODEL	PSZ2GH221125003-10	I _{max} (cd)	382.4	S/MH(C0/180)	1.30
NOMINAL POWER(W)		LOR(%)	100.0	S/MH(C90/270)	0.91
RATED VOLTAGE(V)	120	TOTAL FLUX(lm)	1297.1	η UP, DN(C0-180)	17.8,54.6
NOMINAL FLUX(lm)	1297.11	CIE CLASS	SEMI-D.	η UP, DN(C180-360)	0.9,26.7
LAMPS INSIDE	1	η up(%)	18.7	CIBSE SHR NOM	1.25
TEST VOLTAGE(V)	120	η down(%)	81.3	CIBSE SHR MAX	1.30



C Range: 0 - 360DEG
 C Interval: 22.5DEG
 Test Speed: HIGH
 Temperature:25.1DEG
 Operators:Evan
 Test Date:2022-11-29

γ Range: 0 - 180DEG
 γ Interval: 1.0DEG
 Test System:EVERFINE GO-R5000_V2 SYSTEM V2.0.351
 Humidity:42%
 Test Distance:2.532m [K=1.0000]
 Remarks:

ZONAL FLUX DIAGRAM

ZONAL FLUX DIAGRAM:

γ	C0	C45	C90	C135	C180	C225	C270	C315	γ	Φ zone	Φ total	%lum, lamp
10	352.8	317.9	312.0	315.9	352.1	381.1	377.4	379.7	0- 10	33.39	33.39	2.57,2.57
20	342.1	314.9	311.2	314.0	342.6	368.2	317.8	366.9	10- 20	97.24	130.6	10.1,10.1
30	309.5	308.3	309.3	308.2	311.2	280.4	170.4	279.7	20- 30	142.4	273.0	21,21
40	254.4	295.9	298.2	295.3	254.7	162.5	103.9	162.9	30- 40	161.4	434.4	33.5,33.5
50	184.2	275.8	275.1	274.9	182.4	97.09	65.04	96.95	40- 50	163.4	597.8	46.1,46.1
60	119.6	248.1	242.8	247.0	116.3	57.14	30.38	56.65	50- 60	149.5	747.3	57.6,57.6
70	70.11	215.6	207.8	214.7	68.10	19.86	2.426	19.40	60- 70	125.8	873.0	67.3,67.3
80	34.45	181.3	175.7	180.9	33.77	2.774	0.2297	2.326	70- 80	99.92	973.0	75,75
90	18.54	157.4	156.4	156.7	17.92	1.664	0.3289	1.440	80- 90	81.32	1054	81.3,81.3
100	15.47	136.4	140.1	136.2	14.85	0.9824	0.4128	0.7136	90-100	68.92	1123	86.6,86.6
110	12.98	115.4	124.0	115.6	12.57	0.5854	0.3321	0.4387	100-110	57.23	1180	91,91
120	10.97	93.97	106.6	94.93	11.37	0.2010	0.2654	0.2222	110-120	44.98	1225	94.5,94.5
130	12.57	71.57	86.10	73.01	13.43	0.2053	0.2224	0.2275	120-130	32.78	1258	97,97
140	13.89	48.07	62.46	49.74	14.55	0.2964	0.2224	0.2522	130-140	21.26	1279	98.6,98.6
150	14.24	24.94	37.17	26.73	14.72	1.464	0.2548	0.5274	140-150	11.56	1291	99.5,99.5
160	10.33	6.181	12.47	7.185	10.20	3.751	0.3802	0.7306	150-160	4.921	1296	99.9,99.9
170	2.144	2.281	1.073	2.657	2.436	1.738	0.4111	0.7056	160-170	1.082	1297	100,100
180	0.8803	0.7651	0.9042	0.4851	0.8634	0.8614	0.8867	0.6576	170-180	0.1026	1297	100,100
DEG	LUMINOUS INTENSITY:cd									UNIT:lm		

Conical surface Flux(90deg): 516.93 lm

%lum = 39.9%
%lamp = 39.9%

Conical surface Flux(120deg): 747.28 lm

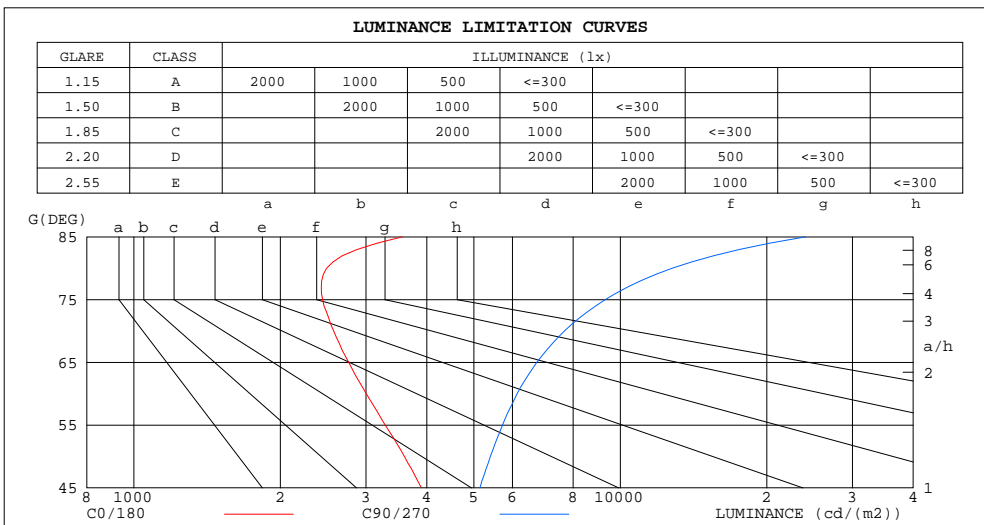
%lum = 57.6%
%lamp = 57.6%

C Range: 0 - 360DEG
C Interval: 22.5DEG
Test Speed: HIGH
Temperature:25.1DEG
Operators:Evan
Test Date:2022-11-29

γ Range: 0 - 180DEG
γ Interval: 1.0DEG
Test System:EVERFINE GO-R5000_V2 SYSTEM V2.0.351
Humidity:42%
Test Distance:2.532m [K=1.0000]
Remarks:

LUMINANCE LIMITATION CURVES

Test:U:120.1V I:0.1914A P:22.38W PF:0.9738 Lamp Flux:1297.11x1 lm		
NAME: LED luminaires	TYPE:N/A	WEIGHT:N/A
SPEC.:ASD-LVF24M-4D23CC-BK 4000K	DIM.: N/A	SERIAL No.:N/A
MFR.: ASD Lighting corp	SUR.:N/A	Shielding Angle:N/A



LUMINANCE cd/(m2)		
G (DEG)	C0/180	C90/270
85	3562	24038
80	2491	12782
75	2443	9310
70	2574	7678
65	2765	6734
60	3005	6136
55	3286	5727
50	3598	5407
45	3901	5147

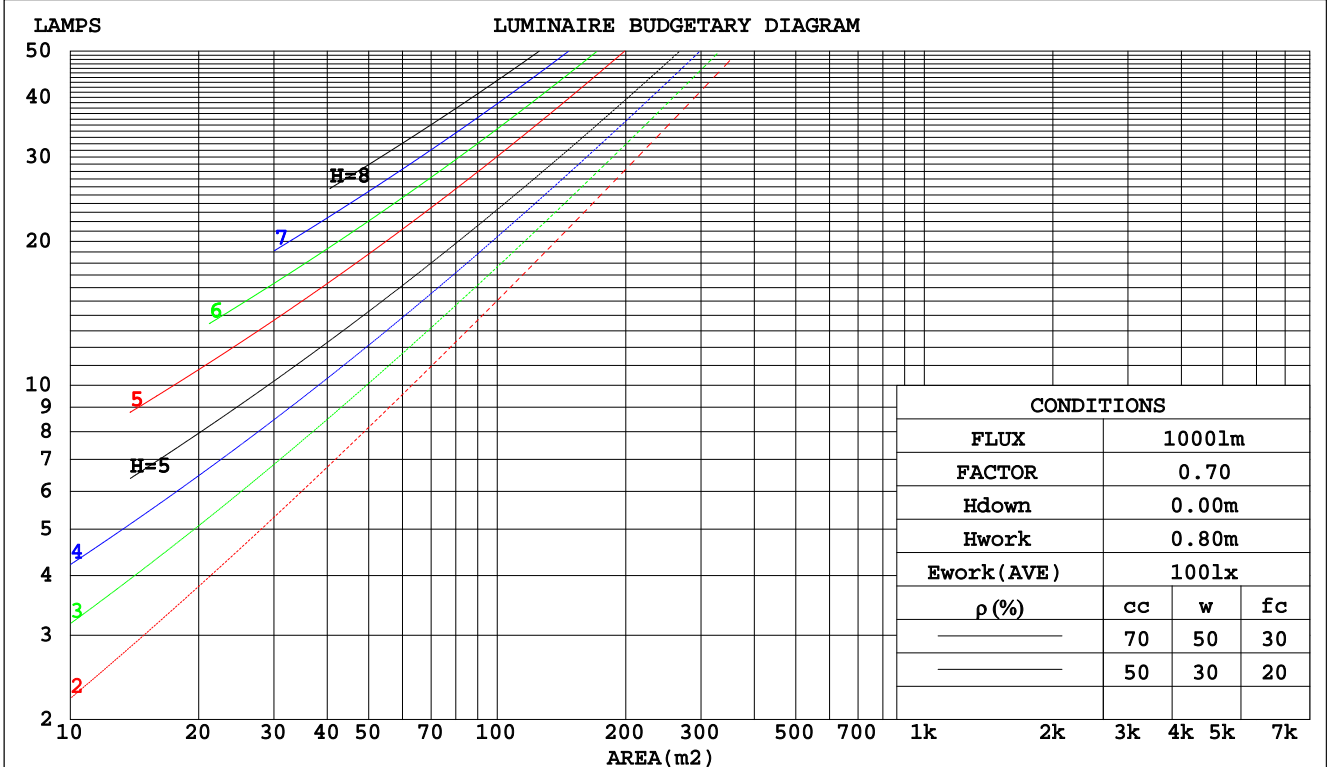
C Range: 0 - 360DEG
 C Interval: 22.5DEG
 Test Speed: HIGH
 Temperature:25.1DEG
 Operators:Evan
 Test Date:2022-11-29

γ Range: 0 - 180DEG
 γ Interval: 1.0DEG
 Test System:EVERFINE GO-R5000_V2 SYSTEM V2.0.351
 Humidity:42%
 Test Distance:2.532m [K=1.0000]
 Remarks:

CU AND LUMINAIRE BUDGETARY ESTIMATE DIAGRAM

Test:U:120.1V I:0.1914A P:22.38W PF:0.9738 Lamp Flux:1297.1lx1 lm		
NAME: LED luminaires	TYPE:N/A	WEIGHT:N/A
SPEC.:ASD-LVF24M-4D23CC-BK 4000K	DIM.: N/A	SERIAL No.:N/A
MFR.: ASD Lighting corp	SUR.:N/A	Shielding Angle:N/A

pcc	80%			70%			50%			30%			10%			0
	50%	30%	10%	50%	30%	10%	50%	30%	10%	50%	30%	10%	50%	30%	10%	0
pw																0
pfc	20%			20%			20%			20%			20%			0
RCR	RCR:Room Cavity Ratio Coefficients of Utilization(CU)															
0.0	1.15	1.15	1.15	1.10	1.10	1.10	1.01	1.01	1.01	.92	.92	.92	.85	.85	.85	.81
1.0	.97	.92	.88	.93	.88	.84	.85	.81	.78	.78	.75	.73	.71	.69	.67	.64
2.0	.84	.76	.70	.80	.74	.68	.74	.68	.64	.68	.63	.59	.62	.58	.55	.52
3.0	.73	.65	.58	.70	.63	.56	.65	.58	.53	.59	.54	.50	.54	.50	.47	.43
4.0	.65	.56	.49	.62	.54	.48	.57	.50	.45	.53	.47	.42	.49	.44	.40	.37
5.0	.58	.49	.42	.56	.47	.41	.51	.44	.39	.47	.41	.37	.44	.39	.35	.32
6.0	.52	.43	.37	.50	.42	.36	.46	.39	.34	.43	.37	.32	.40	.35	.30	.28
7.0	.47	.38	.32	.45	.37	.32	.42	.35	.30	.39	.33	.29	.36	.31	.27	.25
8.0	.43	.35	.29	.41	.34	.28	.39	.32	.27	.36	.30	.26	.33	.28	.24	.22
9.0	.39	.31	.26	.38	.30	.25	.36	.29	.24	.33	.27	.23	.31	.26	.22	.20
10.0	.36	.29	.23	.35	.28	.23	.33	.26	.22	.31	.25	.21	.29	.24	.20	.18



C Range: 0 - 360DEG
 C Interval: 22.5DEG
 Test Speed: HIGH
 Temperature:25.1DEG
 Operators:Evan
 Test Date:2022-11-29

γ Range: 0 - 180DEG
 γ Interval: 1.0DEG
 Test System:EVERFINE GO-R5000_V2 SYSTEM V2.0.351
 Humidity:42%
 Test Distance:2.532m [K=1.0000]
 Remarks:

WEC AND CCEC

Test:U:120.1V I:0.1914A P:22.38W PF:0.9738 Lamp Flux:1297.11x1 lm		
NAME: LED luminaires	TYPE:N/A	WEIGHT:N/A
SPEC.:ASD-LVF24M-4D23CC-BK 4000K	DIM.: N/A	SERIAL No.:N/A
MFR.: ASD Lighting corp	SUR.:N/A	Shielding Angle:N/A

ρcc	80%			70%			50%			30%			10%			0
ρw	50%	30%	10%	50%	30%	10%	50%	30%	10%	50%	30%	10%	50%	30%	10%	0
ρfc	20%			20%			20%			20%			20%			0
RCR	RCR:Room Cavity Ratio						Wall Exitance Coefficients(WEC)									
0.0																
1.0	.357	.203	.064	.344	.196	.062	.320	.183	.059	.298	.172	.055	.277	.161	.052	
2.0	.312	.171	.052	.301	.166	.051	.279	.155	.048	.259	.145	.045	.240	.136	.043	
3.0	.280	.149	.045	.269	.144	.043	.250	.135	.041	.231	.127	.039	.215	.119	.037	
4.0	.253	.132	.039	.244	.128	.038	.226	.120	.036	.210	.113	.034	.194	.106	.032	
5.0	.231	.118	.034	.223	.114	.033	.207	.108	.032	.192	.101	.030	.178	.095	.029	
6.0	.213	.107	.031	.205	.104	.030	.191	.098	.028	.177	.092	.027	.164	.086	.026	
7.0	.197	.097	.028	.190	.095	.027	.177	.089	.026	.164	.084	.024	.152	.079	.023	
8.0	.183	.090	.025	.177	.087	.025	.165	.082	.023	.153	.077	.022	.142	.073	.021	
9.0	.171	.083	.023	.165	.081	.023	.154	.076	.022	.143	.072	.021	.133	.068	.020	
10.0	.161	.077	.021	.155	.075	.021	.145	.071	.020	.135	.067	.019	.125	.063	.018	

ρcc	80%			70%			50%			30%			10%			0
ρw	50%	30%	10%	50%	30%	10%	50%	30%	10%	50%	30%	10%	50%	30%	10%	0
ρfc	20%			20%			20%			20%			20%			0
RCR	RCR:Room Cavity Ratio						Ceiling Cavity Exitance Coefficients(CCEC)									
0.0	.333	.333	.333	.285	.285	.285	.194	.194	.194	.112	.112	.112	.036	.036	.036	
1.0	.327	.300	.274	.280	.257	.236	.192	.177	.163	.110	.102	.095	.035	.033	.031	
2.0	.320	.277	.240	.274	.238	.208	.188	.165	.145	.108	.096	.085	.035	.031	.028	
3.0	.312	.260	.218	.267	.224	.189	.184	.156	.133	.106	.091	.078	.034	.030	.026	
4.0	.304	.247	.204	.261	.214	.177	.179	.149	.125	.104	.087	.074	.033	.028	.024	
5.0	.296	.237	.194	.255	.205	.169	.175	.143	.119	.102	.084	.071	.033	.027	.023	
6.0	.289	.229	.186	.249	.199	.162	.171	.139	.115	.099	.082	.068	.032	.027	.023	
7.0	.282	.223	.181	.243	.193	.158	.168	.135	.112	.097	.080	.067	.031	.026	.022	
8.0	.276	.217	.177	.237	.188	.154	.164	.132	.109	.096	.078	.065	.031	.026	.022	
9.0	.270	.212	.174	.232	.184	.151	.161	.130	.107	.094	.077	.064	.030	.025	.021	
10.0	.264	.208	.171	.228	.181	.149	.158	.127	.106	.092	.075	.063	.030	.025	.021	

C Range: 0 - 360DEG
 C Interval: 22.5DEG
 Test Speed: HIGH
 Temperature:25.1DEG
 Operators:Evan
 Test Date:2022-11-29

γ Range: 0 - 180DEG
 γ Interval: 1.0DEG
 Test System:EVERFINE GO-R5000_V2 SYSTEM V2.0.351
 Humidity:42%
 Test Distance:2.532m [K=1.0000]
 Remarks:

UGR(Unified Glare Rating) Table

Test:U:120.1V I:0.1914A P:22.38W PF:0.9738 Lamp Flux:1297.1lx1 lm										
NAME: LED luminaires					TYPE:N/A			WEIGHT:N/A		
SPEC.:ASD-LVF24M-4D23CC-BK 4000K					DIM.: N/A			SERIAL No.:N/A		
MFR.:ASD Lighting corp					SUR.:N/A			Shielding Angle:N/A		
ceiling/cavity	0.7	0.7	0.5	0.5	0.3	0.7	0.7	0.5	0.5	0.3
walls	0.5	0.3	0.5	0.3	0.3	0.5	0.3	0.5	0.3	0.3
working plane	0.2	0.2	0.2	0.2	0.2	0.2	0.2	0.2	0.2	0.2
Room dimensions	Viewed crosswise					Viewed endwise				
x = 2H y = 2H	17.6	18.9	18.1	19.4	20.0	19.3	20.6	19.8	21.1	21.7
3H	19.2	20.4	19.8	21.0	21.6	21.8	23.0	22.4	23.6	24.2
4H	19.9	21.0	20.5	21.6	22.2	23.2	24.4	23.8	24.9	25.6
6H	20.4	21.5	21.0	22.1	22.7	24.8	25.8	25.3	26.4	27.1
8H	20.7	21.7	21.3	22.3	23.0	25.6	26.7	26.2	27.2	27.9
12H	20.9	21.9	21.5	22.5	23.2	26.6	27.6	27.3	28.2	28.9
4H 2H	19.0	20.1	19.5	20.7	21.3	20.1	21.3	20.7	21.8	22.4
3H	21.1	22.1	21.7	22.7	23.4	22.9	23.9	23.5	24.5	25.2
4H	22.1	23.0	22.8	23.7	24.4	24.5	25.4	25.1	26.0	26.7
6H	23.0	23.9	23.7	24.5	25.3	26.2	27.0	26.9	27.7	28.4
8H	23.4	24.2	24.1	24.8	25.6	27.2	27.9	27.8	28.6	29.4
12H	23.7	24.4	24.4	25.1	25.9	28.3	29.0	29.0	29.7	30.5
8H 4H	23.3	24.1	24.0	24.7	25.5	25.1	25.8	25.7	26.5	27.2
6H	24.8	25.4	25.5	26.1	26.9	27.1	27.7	27.8	28.4	29.2
8H	25.5	26.1	26.2	26.8	27.6	28.3	28.9	29.0	29.6	30.4
12H	26.1	26.6	26.9	27.4	28.2	29.7	30.2	30.4	30.9	31.8
12H 4H	23.6	24.3	24.3	25.0	25.8	25.1	25.8	25.8	26.5	27.3
6H	25.3	25.9	26.0	26.6	27.4	27.3	27.9	28.0	28.6	29.4
8H	26.3	26.8	27.0	27.5	28.3	28.7	29.2	29.4	29.9	30.7
Variations with the observer position at spacings:										
S = 1.0H	+ 0.1 / - 0.1					+ 0.1 / - 0.1				
1.5H	+ 0.2 / - 0.3					+ 0.2 / - 0.3				
2.0H	+ 0.3 / - 0.5					+ 0.3 / - 0.4				

CIE Pub.117 Corrected 1297 lm Total Lamp Luminous Flux.(8log(F/F0) = 0.9)

C Range: 0 - 360DEG
 C Interval: 22.5DEG
 Test Speed: HIGH
 Temperature:25.1DEG
 Operators:Evan
 Test Date:2022-11-29

γ Range: 0 - 180DEG
 γ Interval: 1.0DEG
 Test System:EVERFINE GO-R5000_V2 SYSTEM V2.0.351
 Humidity:42%
 Test Distance:2.532m [K=1.0000]
 Remarks:

UTILIZATION FACTORS TABLE

Test:U:120.1V I:0.1914A P:22.38W PF:0.9738 Lamp Flux:1297.11x1 lm		
NAME: LED luminaires	TYPE:N/A	WEIGHT:N/A
SPEC.:ASD-LVF24M-4D23CC-BK 4000K	DIM.: N/A	SERIAL No.:N/A
MFR.: ASD Lighting corp	SUR.:N/A	Shielding Angle:N/A

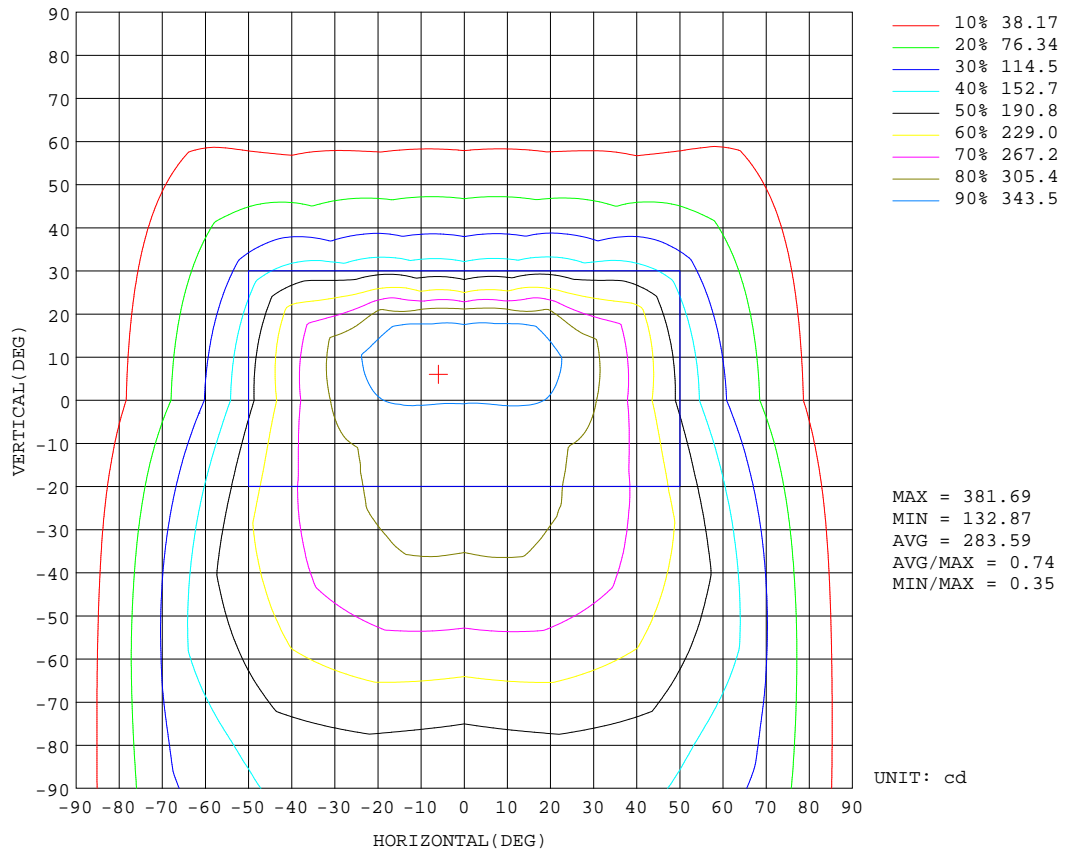
REFLECTANCE										
Ceiling	0.8	0.8	0.8	0.7	0.7	0.7	0.5	0.5	0.5	0
Walls	0.7	0.5	0.3	0.7	0.5	0.3	0.7	0.5	0.3	0
Working plane	0.2	0.2	0.2	0.2	0.2	0.2	0.2	0.2	0.2	0
ROOM INDEX	UTILIZATION FACTORS(PERCENT) $k(RI) \times RCR = 5$									
k = 0.60	50	39	32	49	38	31	47	37	31	24
0.80	60	47	40	58	47	39	55	45	38	31
1.00	67	55	47	65	54	47	62	54	45	37
1.25	74	62	54	72	61	53	67	58	52	42
1.50	79	68	59	76	66	58	71	63	56	46
2.00	86	76	68	83	73	66	77	69	63	52
2.50	90	81	73	87	78	71	80	73	68	55
3.00	94	85	78	90	82	76	83	77	72	59
4.00	98	91	85	94	88	82	87	82	77	63
5.00	101	94	89	97	91	86	89	85	81	66
ROOM INDEX	UF(total)									Direct
According to DIN EN 13032-2 2004			Suspended				SHRNOM = 1.25			

C Range: 0 - 360DEG
 C Interval: 22.5DEG
 Test Speed: HIGH
 Temperature:25.1DEG
 Operators:Evan
 Test Date:2022-11-29

γ Range: 0 - 180DEG
 γ Interval: 1.0DEG
 Test System:EVERFINE GO-R5000_V2 SYSTEM V2.0.351
 Humidity:42%
 Test Distance:2.532m [K=1.0000]
 Remarks:

ISOCANDELA DIAGRAM

Test:U:120.1V I:0.1914A P:22.38W PF:0.9738 Lamp Flux:1297.11x1 lm		
NAME: LED luminaires	TYPE:N/A	WEIGHT:N/A
SPEC.:ASD-LVF24M-4D23CC-BK 4000K	DIM.: N/A	SERIAL No.:N/A
MFR.: ASD Lighting corp	SUR.:N/A	Shielding Angle:N/A

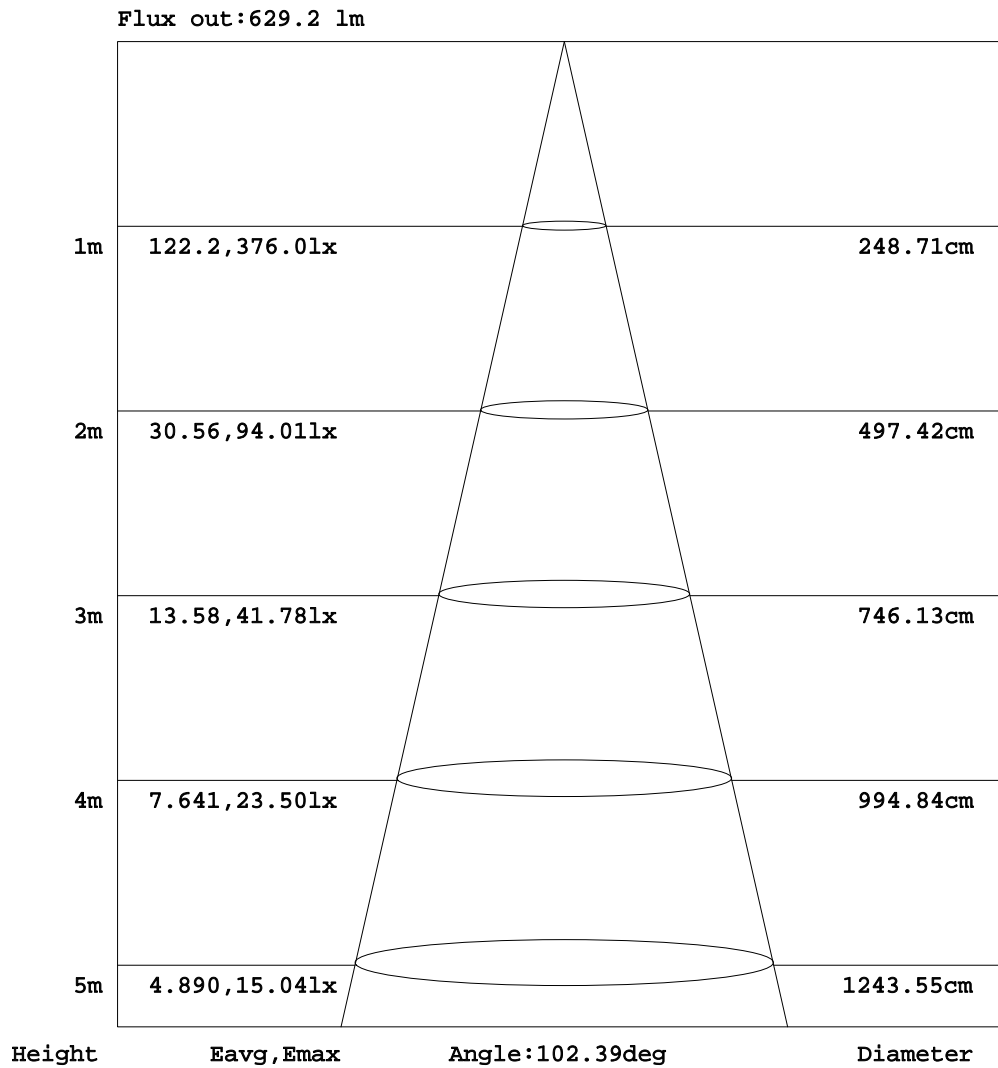


C Range: 0 - 360DEG
 C Interval: 22.5DEG
 Test Speed: HIGH
 Temperature:25.1DEG
 Operators:Evan
 Test Date:2022-11-29

γ Range: 0 - 180DEG
 γ Interval: 1.0DEG
 Test System:EVERFINE GO-R5000_V2 SYSTEM V2.0.351
 Humidity:42%
 Test Distance:2.532m [K=1.0000]
 Remarks:

AAI Figure

Test:U:120.1V I:0.1914A P:22.38W PF:0.9738 Lamp Flux:1297.11x1 lm		
NAME: LED luminaires	TYPE:N/A	WEIGHT:N/A
SPEC.:ASD-LVF24M-4D23CC-BK 4000K	DIM.: N/A	SERIAL No.:N/A
MFR.: ASD Lighting corp	SUR.:N/A	Shielding Angle:N/A



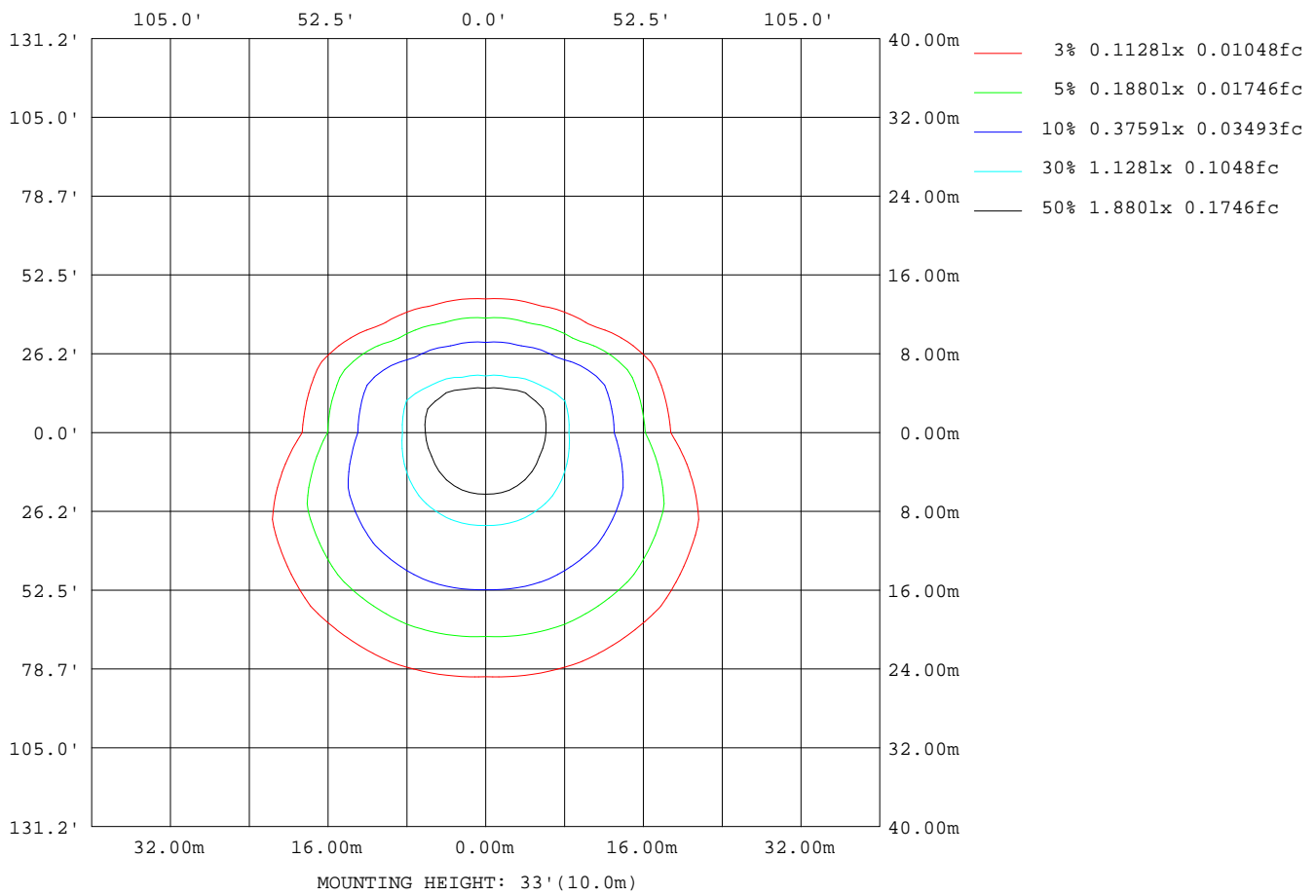
Note:The Curves indicate the illuminated area and the average illumination when the luminaire is at different distance.

C Range: 0 - 360DEG
 C Interval: 22.5DEG
 Test Speed: HIGH
 Temperature:25.1DEG
 Operators:Evan
 Test Date:2022-11-29

γ Range: 0 - 180DEG
 γ Interval: 1.0DEG
 Test System:EVERFINE GO-R5000_V2 SYSTEM V2.0.351
 Humidity:42%
 Test Distance:2.532m [K=1.0000]
 Remarks:

ISOLUX DIAGRAM

Test:U:120.1V I:0.1914A P:22.38W PF:0.9738 Lamp Flux:1297.11x1 lm		
NAME: LED luminaires	TYPE:N/A	WEIGHT:N/A
SPEC.:ASD-LVF24M-4D23CC-BK 4000K	DIM.: N/A	SERIAL No.:N/A
MFR.: ASD Lighting corp	SUR.:N/A	Shielding Angle:N/A



C Range: 0 - 360DEG
 C Interval: 22.5DEG
 Test Speed: HIGH
 Temperature:25.1DEG
 Operators:Evan
 Test Date:2022-11-29

γ Range: 0 - 180DEG
 γ Interval: 1.0DEG
 Test System:EVERFINE GO-R5000_V2 SYSTEM V2.0.351
 Humidity:42%
 Test Distance:2.532m [K=1.0000]
 Remarks:

LED Avg.L Report

Test:U:120.1V I:0.1914A P:22.38W PF:0.9738 Lamp Flux:1297.11x1 lm		
NAME: LED luminaires	TYPE:N/A	WEIGHT:N/A
SPEC.:ASD-LVF24M-4D23CC-BK 4000K	DIM.: N/A	SERIAL No.:N/A
MFR.: ASD Lighting corp	SUR.:N/A	Shielding Angle:N/A

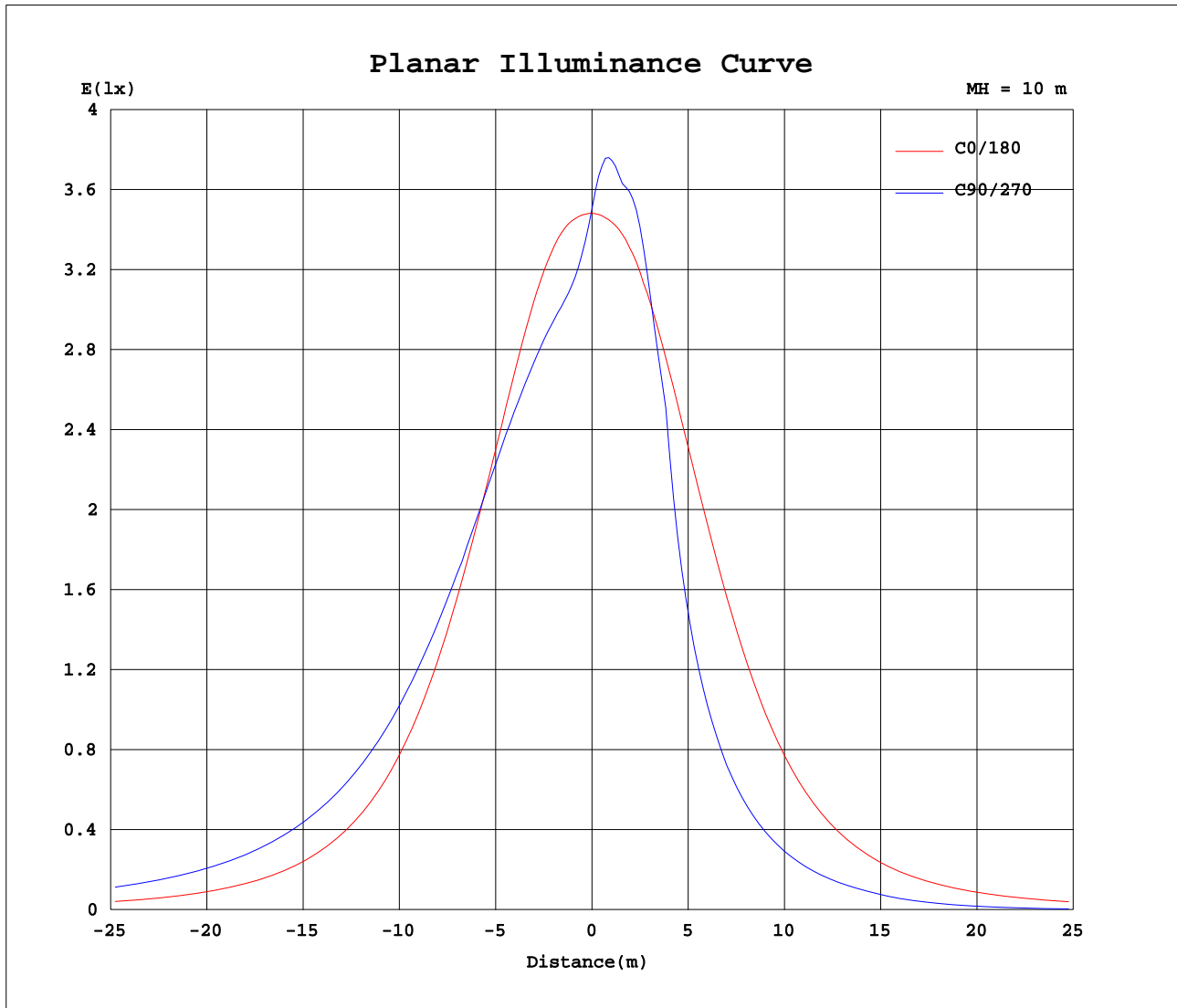
AvgL	cd/m2
L_0~180(65)av	2735
L_0~180(75)av	2428
L_0~180(85)av	3514
L_90~270(65)av	3583
L_90~270(75)av	4651
L_90~270(85)av	12014
L_45(65)av	4029
L_45(75)av	4947
L_45(85)av	12311

Standard: GB/T 29293-2012

C Range: 0 - 360DEG
 C Interval: 22.5DEG
 Test Speed: HIGH
 Temperature:25.1DEG
 Operators:Evan
 Test Date:2022-11-29

γ Range: 0 - 180DEG
 γ Interval: 1.0DEG
 Test System:EVERFINE GO-R5000_V2 SYSTEM V2.0.351
 Humidity:42%
 Test Distance:2.532m [K=1.0000]
 Remarks:

Planar Illuminance Curve



C Range: 0 - 360DEG
 C Interval: 22.5DEG
 Test Speed: HIGH
 Temperature: 25.1DEG
 Operators: Evan
 Test Date: 2022-11-29

γ Range: 0 - 180DEG
 γ Interval: 1.0DEG
 Test System: EVERFINE GO-R5000_V2 SYSTEM V2.0.351
 Humidity: 42%
 Test Distance: 2.532m [K=1.0000]
 Remarks:

LUMINOUS DISTRIBUTION INTENSITY DATA

Test:U:120.1V I:0.1914A P:22.38W PF:0.9738 Lamp Flux:1297.1lx1 lm		
NAME: LED luminaires	TYPE:N/A	WEIGHT:N/A
SPEC.:ASD-LVF24M-4D23CC-BK 4000K	DIM.: N/A	SERIAL No.:N/A
MFR.: ASD Lighting corp	SUR.:N/A	Shielding Angle:N/A

Table--1

UNIT: cd

C(DEG) γ (DEG)	0	22.5	45	67.5	90	112.5	135	157.5	180	202.5	225	247.5	270	292.5	315	337.5			
0	350	350	350	350	350	350	350	350	350	350	350	350	350	350	350	350			
5	351	336	326	321	319	320	325	335	350	367	376	379	380	379	376	367			
10	353	328	318	313	312	313	316	327	352	379	381	377	377	377	380	377			
15	350	322	316	313	311	312	315	321	349	378	379	375	367	374	377	373			
20	342	316	315	313	311	312	314	315	343	365	368	334	318	334	367	358			
25	328	308	312	313	311	313	312	308	329	348	333	260	228	261	332	342			
30	309	299	308	312	309	311	308	299	311	327	280	193	170	193	280	323			
35	285	287	303	309	305	308	302	287	286	300	212	148	131	149	212	296			
40	254	274	296	303	298	302	295	274	255	268	163	115	104	115	163	266			
45	220	260	287	294	288	293	286	260	219	237	125	91.2	82.3	91.3	125	235			
50	184	245	276	282	275	282	275	245	182	186	97.1	71.4	65.0	71.4	96.9	185			
55	150	228	263	268	260	268	262	228	148	144	75.3	55.0	49.3	55.0	74.8	145			
60	120	211	248	253	243	252	247	211	116	109	57.1	36.4	30.4	36.4	56.6	109			
65	93.1	194	232	236	225	236	231	193	90.2	82.8	38.9	19.1	14.9	19.1	38.3	83.5			
70	70.1	176	216	219	208	218	215	176	68.1	62.7	19.9	5.35	2.43	5.39	19.4	63.0			
75	50.4	158	198	202	191	201	198	158	49.3	44.0	5.29	0.19	0.21	0.21	4.86	44.5			
80	34.4	139	181	186	176	185	181	140	33.8	24.9	2.77	0.22	0.23	0.23	2.33	25.4			
85	24.7	122	168	176	166	175	167	123	23.8	18.9	2.36	0.26	0.27	0.27	2.05	19.4			
90	18.5	111	157	166	156	165	157	112	17.9	12.4	1.66	0.29	0.33	0.31	1.44	14.0			
95	17.6	100	147	156	148	156	147	101	16.6	8.43	1.13	0.33	0.40	0.34	0.93	8.16			
100	15.5	89.8	136	147	140	147	136	90.3	14.9	8.57	0.98	0.33	0.41	0.35	0.71	8.46			
105	14.2	79.3	126	138	132	138	126	80.0	13.6	7.91	0.79	0.30	0.37	0.32	0.56	8.00			
110	13.0	69.3	115	129	124	128	116	70.1	12.6	7.74	0.59	0.28	0.33	0.30	0.44	7.47			
115	11.8	59.0	105	119	116	119	106	60.3	11.6	8.27	0.36	0.25	0.29	0.27	0.27	7.90			
120	11.0	49.9	94.0	108	107	109	94.9	51.4	11.4	8.39	0.20	0.23	0.27	0.25	0.22	8.09			
125	11.5	41.1	82.9	97.2	96.7	97.9	84.1	43.0	12.5	7.78	0.20	0.22	0.24	0.23	0.22	7.36			
130	12.6	32.7	71.6	85.6	86.1	86.5	73.0	34.7	13.4	7.36	0.21	0.22	0.22	0.23	0.23	6.83			
135	13.3	24.6	59.8	73.4	74.6	74.4	61.3	26.5	14.1	7.03	0.21	0.22	0.22	0.23	0.23	6.32			
140	13.9	17.7	48.1	61.1	62.5	61.7	49.7	19.4	14.6	6.90	0.30	0.22	0.22	0.23	0.25	5.55			
145	14.2	13.1	36.3	47.5	49.8	48.7	38.2	13.5	14.8	6.95	0.87	0.22	0.23	0.24	0.39	4.35			
150	14.2	11.8	24.9	34.7	37.2	35.8	26.7	12.7	14.7	8.97	1.46	0.28	0.25	0.26	0.53	3.15			
155	13.1	10.6	14.2	22.1	24.5	23.2	15.9	11.6	13.7	10.2	2.60	0.53	0.30	0.31	0.57	3.30			
160	10.3	8.24	6.18	10.4	12.5	11.3	7.19	9.32	10.2	9.91	3.75	0.95	0.38	0.34	0.73	2.67			
165	5.66	5.66	3.68	2.14	2.32	2.59	3.89	6.74	5.00	4.93	2.80	0.67	0.53	0.39	0.72	1.42			
170	2.14	3.25	2.28	1.43	1.07	1.71	2.66	2.55	2.44	2.45	1.74	0.86	0.41	0.48	0.71	0.82			
175	0.65	0.97	1.31	1.00	0.98	1.02	0.94	1.04	0.49	0.50	0.48	0.48	0.49	0.54	0.50	0.52			
180	0.88	0.55	0.77	0.88	0.90	0.57	0.49	0.68	0.86	0.86	0.86	0.86	0.89	0.68	0.66	0.66			

C Range: 0 - 360DEG
 C Interval: 22.5DEG
 Test Speed: HIGH
 Temperature:25.1DEG
 Operators:Evan
 Test Date:2022-11-29

γ Range: 0 - 180DEG
 γ Interval: 1.0DEG
 Test System:EVERFINE GO-R5000_V2 SYSTEM V2.0.351
 Humidity:42%
 Test Distance:2.532m [K=1.0000]
 Remarks: