



LED OUTDOOR WALL CYLINDER

► **DESIGN** - LED OUTDOOR WALL CYLINDER has a modern design with effective up and/or down illumination. This fixture has a tempered glass cover and a durable die-cast aluminum body. It is designed to operate on 120V circuits and provides smooth triac dimming capabilities ranging from 10% to 100%.

► **COLOR SELECTABLE** - You can choose either a 3,000K warm white, 4,000K cool white or 5,000K daylight color temperature.

► **PHOTOCELL** - The built-in Dusk to Dawn Photocell for indicated models will automatically turn the fixture on/off depending on the time of day.

► **APPLICATION** - The fixture is rated for Wet Locations, making it perfect for indoor and outdoor projects such as decks, front doors, porches, patios, corridors, walkways, or any other common areas.

► **ADVANTAGES** - With a lifespan of 50,000 hours, these fixtures are made to last decades under normal operation! ASD provides a 5-year limited warranty along with ETL certification to guarantee top quality products and safety!

Catalog number	
Notes	
Type	



Finish: Bronze Black

Model	Light direction	Watts	Voltage	Dimmable	Lumens	CCT	Finish	Dimensions (LxWxH)	Pre-installed
OLCLR ROUND									
ASD-OLCLR-1D9CC-BZ	1	9W	120 V	TRIAC	up to 1,002 lm	3CCT (3,000/4,000/5,000 K)	Bronze	4-3/8" x 6-7/16" x 7-7/8"	-
ASD-LCLR-1A-9BK	1	9W	120 V	TRIAC	up to 1,002 lm	3CCT (3,000/4,000/5,000 K)	Black	4-3/8" x 6-7/16" x 7-7/8"	-
ASD-OLCLR-1D9CC-BK	1	9W	120 V	TRIAC	up to 1,002 lm	3CCT (3,000/4,000/5,000 K)	Black	4-3/8" x 6-7/16" x 7-7/8"	-
ASD-OLCLR-1D9CC-BK-2PACK	1	9W	120 V	TRIAC	up to 1,002 lm	3CCT (3,000/4,000/5,000 K)	Black	4-3/8" x 6-7/16" x 7-7/8"	-
ASD-LCLR-2A-18BK	2	18W	120 V	TRIAC	up to 1,859 lm	3CCT (3,000/4,000/5,000 K)	Black	4-3/8" x 6-7/16" x 11-13/16"	-
ASD-OLCLR-2D18CC-BK-2PACK	2	18W	120 V	TRIAC	up to 1,859 lm	3CCT (3,000/4,000/5,000 K)	Black	4-3/8" x 6-7/16" x 11-13/16"	-
OLCLR ROUND WITH DECORATIVE RING									
ASD-LCLR-1B-9BK	1	9W	120-277 V	TRIAC	up to 579 lm	3CCT (3,000/4,000/5,000 K)	Black	4-3/8" x 6-9/16" x 7-15/16"	-
ASD-LCLR-2B-18BK	2	18W	120-277 V	TRIAC	up to 1180 lm	3CCT (3,000/4,000/5,000 K)	Black	4-3/8" x 6-9/16" x 11-13/16"	-
OLCLS SQUARE									
ASD-LCLS-1A-9BK	1	9W	120-277 V	TRIAC	up to 819 lm	3CCT (3,000/4,000/5,000 K)	Black	4-3/8" x 5-13/16" x 7-7/8"	-
ASD-OLCLS-1D9CC-BZ	1	9W	120 V	TRIAC	up to 983 lm	3CCT (3,000/4,000/5,000 K)	Bronze	5-13/16" x 4-3/8" x 7-7/8"	-
ASD-OLCLS-1D9CC-BK	1	9W	120 V	TRIAC	up to 983 lm	3CCT (3,000/4,000/5,000 K)	Black	5-13/16" x 4-3/8" x 7-7/8"	-
ASD-LCLS-2A-18BK	2	18W	120-277 V	TRIAC	up to 1,613 lm	3CCT (3,000/4,000/5,000 K)	Black	4-3/8" x 5-13/16" x 10-3/16"	-
ASD-OLCLS-2D18CC-BZ	2	18W	120 V	TRIAC	up to 1,974 lm	3CCT (3,000/4,000/5,000 K)	Bronze	5-13/16" x 4-3/8" x 10-1/4"	-
ASD-OLCLS-2D18CC-BK	2	18W	120 V	TRIAC	up to 1,974 lm	3CCT (3,000/4,000/5,000 K)	Black	5-13/16" x 4-3/8" x 10-1/4"	-
OLCLS SQUARE WITH DECORATIVE RING									
ASD-LCLS-1B-9BK	1	9W	120-277 V	TRIAC	up to 502 lm	3CCT (3,000/4,000/5,000 K)	Black	4-3/8" x 5-13/16" x 7-15/16"	-
ASD-LCLS-2B-18BK	2	18W	120-277 V	TRIAC	up to 962 lm	3CCT (3,000/4,000/5,000 K)	Black	4-3/8" x 5-13/16" x 11-13/16"	-
OLCLR-EM ROUND WITH BATTERY BACK-UP									
ASD-OLCLR-MV-2D18CC-EM-BZ	2	18W	120-277 V	TRIAC	up to 1,676 lm	3CCT (3,000/4,000/5,000 K)	Bronze	4-3/8" x 6-5/8" x 11-13/16"	6W Battery back-up
ASD-OLCLR-MV-2D18CC-EM-BK	2	18W	120-277 V	TRIAC	up to 1,676 lm	3CCT (3,000/4,000/5,000 K)	Black	4-3/8" x 6-5/8" x 11-13/16"	6W Battery back-up
OLCLR-PC ROUND WITH PHOTOCELL									
ASD-OLCLR-1N9CC-PC-BZ	1	9W	120 V	-	up to 1,002 lm	3CCT (3,000/4,000/5,000 K)	Bronze	4-3/8" x 6-7/16" x 7-7/8"	Photocell
ASD-LCLR-1A-9BK-PC	1	9W	120-277 V	-	up to 1,002 lm	3CCT (3,000/4,000/5,000 K)	Black	4-3/8" x 6-7/16" x 7-7/8"	Photocell
ASD-OLCLR-1N9CC-PC-BK-2PACK	1	9W	120 V	-	up to 1,002 lm	3CCT (3,000/4,000/5,000 K)	Black	4-3/8" x 6-7/16" x 7-7/8"	Photocell
ASD-OLCLR-2N18CC-PC-BZ	2	18W	120 V	-	up to 1,859 lm	3CCT (3,000/4,000/5,000 K)	Bronze	4-3/8" x 6-7/16" x 11-13/16"	Photocell
ASD-LCLR-2A-18BK-PC	2	18W	120-277 V	-	up to 1,859 lm	3CCT (3,000/4,000/5,000 K)	Black	4-3/8" x 6-7/16" x 11-13/16"	Photocell
ASD-OLCLR-2N18CC-PC-BK	2	18W	120 V	-	up to 1,859 lm	3CCT (3,000/4,000/5,000 K)	Black	4-3/8" x 6-7/16" x 11-13/16"	Photocell
ASD-OLCLR-2N18CC-PC-BK-2PACK	2	18W	120 V	-	up to 1,859 lm	3CCT (3,000/4,000/5,000 K)	Black	4-3/8" x 6-7/16" x 11-13/16"	Photocell

For most up-to-date spec sheets please refer to asd-lighting.com



LED OUTDOOR WALL CYLINDER

Model	Light direction	Watts	Voltage	Dimmable	Lumens	CCT	Finish	Dimensions (LxWxH)	Pre-installed
OLCLS-PC SQUARE WITH PHOTOCELL									
ASD-LCLS-1A-9BK-PC	1	9W	120 V	-	up to 738 lm	3CCT (3,000/4,000/5,000 K)	Black	4-3/8" x 5-13/16" x 7-7/8"	Photocell
ASD-OLCLS-1N9CC-PC-BK	1	9W	120 V	-	up to 983 lm	3CCT (3,000/4,000/5,000 K)	Black	5-13/16" x 4-3/8" x 7-7/8"	Photocell
ASD-LCLS-2A-18BK-PC	2	18W	120 V	-	up to 1,541 lm	3CCT (3,000/4,000/5,000 K)	Black	4-3/8" x 5-13/16" x 10-3/16"	Photocell
ASD-OLCLS-2N18CC-PC-BK	2	18W	120 V	-	up to 1,974 lm	3CCT (3,000/4,000/5,000 K)	Black	5-13/16" x 4-3/8" x 10-1/4"	Photocell

For detailed luminous flux information please refer to Annex 1, page 4.

PRODUCT SPECIFICATIONS:

Construction & Materials						
Housing	Aluminum					
Lens	Glass					
Finish	Bronze, Black					
Weight	ASD-OLCLR-1D9CC-BZ	1.9 lbs (0.9 kg)	ASD-OLCLS-1D9CC-BK	2 lbs (0.9 kg)	ASD-OLCLR-1N9CC-PC-BK-2PACK	6.2 lbs (2.8 kg)
	ASD-LCLR-1A-9BK	2 lbs (0.9 kg)	ASD-LCLS-2A-18BK	2.9 lbs (1.3 kg)	ASD-OLCLR-2N18CC-PC-BZ	2.5 lbs (1.1 kg)
	ASD-OLCLR-1D9CC-BK	1.9 lbs (0.9 kg)	ASD-OLCLS-2D18CC-BZ	2.5 lbs (1.1 kg)	ASD-LCLR-2A-18BK-PC	2.5 lbs (1.2 kg)
	ASD-OLCLR-1D9CC-BK-2PACK	4 lbs (1.8 kg)	ASD-OLCLS-2D18CC-BK	2.5 lbs (1.1 kg)	ASD-OLCLR-2N18CC-PC-BK	2.5 lbs (1.1 kg)
	ASD-LCLR-2A-18BK	2.5 lbs (1.2 kg)	ASD-LCLS-1B-9BK	2.1 lbs (1 kg)	ASD-OLCLR-2N18CC-PC-BK-2PACK	5.3 lbs (2.4 kg)
	ASD-OLCLR-2D18CC-BK-2PACK	5.3 lbs (2.4 kg)	ASD-LCLS-2B-18BK	3 lbs (1.4 kg)	ASD-LCLS-1A-9BK-PC	2.2 lbs (1 kg)
	ASD-LCLR-1B-9BK	2 lbs (0.9 kg)	ASD-OLCLR-MV-2D18CC-EM-BZ	2 lbs (0.9 kg)	ASD-OLCLS-1N9CC-PC-BK	1.9 lbs (0.9 kg)
	ASD-LCLR-2B-18BK	2.7 lbs (1.2 kg)	ASD-OLCLR-MV-2D18CC-EM-BK	2 lbs (0.9 kg)	ASD-LCLS-2A-18BK-PC	2.9 lbs (1.3 kg)
	ASD-LCLS-1A-9BK	2.2 lbs (1 kg)	ASD-OLCLR-1N9CC-PC-BZ	0.9 lbs (0.4 kg)	ASD-OLCLS-2N18CC-PC-BK	2.6 lbs (1.2 kg)
ASD-OLCLS-1D9CC-BZ	2 lbs (0.9 kg)	ASD-LCLR-1A-9BK-PC				
Environmental system						
Work environment	Suitable for Wet Locations					
Operating temperature	-40°F to 113°F (-40°C to 45°C)		for EM and PC models: -4°F to 113°F (-20°C to 45°C)			
L-70 Life	> 50,000 hrs					
Optical system						
Color temperature	3CCT switch (3,000/4,000/5,000 K), 3,000 K by default					
CRI	> 80					
Electrical system						
Input voltage	120 V for EM models: 120-277 V					
Max input current	ASD-OLCLR-1D9CC-BZ	0.1 A	ASD-OLCLS-1D9CC-BK	0.1 A	ASD-OLCLR-1N9CC-PC-BK-2PACK	0.4 A
	ASD-LCLR-1A-9BK		ASD-LCLS-2A-18BK	0.45A	ASD-OLCLR-2N18CC-PC-BZ	
	ASD-OLCLR-1D9CC-BK		ASD-OLCLS-2D18CC-BZ	0.2 A	ASD-LCLR-2A-18BK-PC	
	ASD-OLCLR-1D9CC-BK-2PACK	0.2 A	ASD-OLCLS-2D18CC-BK	0.2 A	ASD-OLCLR-2N18CC-PC-BK	0.2 A
	ASD-LCLR-2A-18BK		ASD-LCLS-1B-9BK	0.22 A	ASD-OLCLR-2N18CC-PC-BK-2PACK	
	ASD-OLCLR-2D18CC-BK-2PACK	0.22 A	ASD-LCLS-2B-18BK	0.45A	ASD-LCLS-1A-9BK-PC	0.2 A
	ASD-LCLR-1B-9BK	0.22 A	ASD-OLCLR-MV-2D18CC-EM-BZ	0.4 A	ASD-OLCLS-1N9CC-PC-BK	0.1 A
	ASD-LCLR-2B-18BK	0.45 A	ASD-OLCLR-MV-2D18CC-EM-BK		ASD-LCLS-2A-18BK-PC	0.45 A
	ASD-LCLS-1A-9BK	0.22 A	ASD-OLCLR-1N9CC-PC-BZ		ASD-OLCLS-2N18CC-PC-BK	0.2 A
ASD-OLCLS-1D9CC-BZ	0.1 A	ASD-LCLR-1A-9BK-PC	0.22A			
Inrush current (Action time)	ASD-OLCLR-1D9CC-BZ	0.07 A (0.1 S)	ASD-OLCLS-1D9CC-BK	0.07 A (0.1 S)	ASD-OLCLR-1N9CC-PC-BK-2PACK	0.07 A (0.1 S)
	ASD-LCLR-1A-9BK		ASD-LCLS-2A-18BK	0.2 A (1 S)	ASD-OLCLR-2N18CC-PC-BZ	0.15 A (0.1 S)
	ASD-OLCLR-1D9CC-BK		ASD-OLCLS-2D18CC-BZ	0.15 A (0.1 S)	ASD-LCLR-2A-18BK-PC	
	ASD-OLCLR-1D9CC-BK-2PACK	ASD-OLCLS-2D18CC-BK	0.15 A (0.1 S)	ASD-OLCLR-2N18CC-PC-BK		
	ASD-LCLR-2A-18BK	0.15 A (0.1 S)	ASD-LCLS-1B-9BK	0.12 A (1 S)	ASD-OLCLR-2N18CC-PC-BK-2PACK	0.12 A (0.1 S)
	ASD-OLCLR-2D18CC-BK-2PACK	0.15 A (0.1 S)	ASD-LCLS-2B-18BK	0.2 A (1 S)	ASD-LCLS-1A-9BK-PC	0.12 A (0.1 S)
	ASD-LCLR-1B-9BK	0.12 A (0.1 S)	ASD-OLCLR-MV-2D18CC-EM-BZ	0.15 A (0.1 S)	ASD-OLCLS-1N9CC-PC-BK	0.07 A (0.1 S)
	ASD-LCLR-2B-18BK	0.2 A (0.1 S)	ASD-OLCLR-MV-2D18CC-EM-BK	0.15 A (0.1 S)	ASD-LCLS-2A-18BK-PC	0.2 A (0.1 S)
	ASD-LCLS-1A-9BK	0.12 A (0.1 S)	ASD-OLCLR-1N9CC-PC-BZ	0.07 A (0.1 S)	ASD-OLCLS-2N18CC-PC-BK	0.15 A (0.1 S)
ASD-OLCLS-1D9CC-BZ	0.07 A (1 S)	ASD-LCLR-1A-9BK-PC				
Off state power	0W					
Power consumption	1 light direction: 9W		2 light direction: 18W			
Power factor	> 0.9					
Output voltage	-					
	for OLCLR-EM and OLCLR-PC models: 36 V					
Max output current	ASD-OLCLR-1D9CC-BZ	0.25 A	ASD-OLCLS-1D9CC-BK	0.25 A	ASD-OLCLR-1N9CC-PC-BK-2PACK	0.25 A
	ASD-LCLR-1A-9BK		ASD-LCLS-2A-18BK	0.45 A	ASD-OLCLR-2N18CC-PC-BZ	0.45 A
	ASD-OLCLR-1D9CC-BK	ASD-OLCLS-2D18CC-BZ	ASD-LCLR-2A-18BK-PC			
	ASD-OLCLR-1D9CC-BK-2PACK	ASD-OLCLS-2D18CC-BK	ASD-OLCLR-2N18CC-PC-BK			
	ASD-LCLR-2A-18BK	0.45 A	ASD-LCLS-1B-9BK	0.22 A	ASD-OLCLR-2N18CC-PC-BK-2PACK	




For most up-to-date spec sheets please refer to asd-lighting.com



LED OUTDOOR WALL CYLINDER

Electrical system						
Max output current	ASD-OLCLR-2D18CC-BK-2PACK	0,45 A	ASD-LCLS-2B-18BK	0,45 A	ASD-LCLS-1A-9BK-PC	0,22 A
	ASD-LCLR-1B-9BK	0,22 A	ASD-OLCLR-MV-2D18CC-EM-BZ		ASD-OLCLS-1N9CC-PC-BK	0,25 A
	ASD-LCLR-2B-18BK	0,45 A	ASD-OLCLR-MV-2D18CC-EM-BK	ASD-LCLS-2A-18BK-PC	0,45 A	
	ASD-LCLS-1A-9BK	0,22 A	ASD-OLCLR-1N9CC-PC-BZ	ASD-OLCLS-2N18CC-PC-BK		
	ASD-OLCLS-1D9CC-BZ	0,25 A	ASD-LCLR-1A-9BK-PC			
Surge protection DM/CM	ASD-OLCLR-1D9CC-BZ	1.25 kV / 1.25 kV	ASD-OLCLS-1D9CC-BK	1.25 kV / 1.25 kV	ASD-OLCLR-1N9CC-PC-BK-2PACK	1.25 kV / 1.25 kV
	ASD-LCLR-1A-9BK		ASD-LCLS-2A-18BK	2.5 kV / 2.5 kV	ASD-OLCLR-2N18CC-PC-BZ	
	ASD-OLCLR-1D9CC-BK		ASD-OLCLS-2D18CC-BZ	1.5 kV / 1.5 kV	ASD-LCLR-2A-18BK-PC	
	ASD-OLCLR-1D9CC-BK-2PACK		ASD-OLCLS-2D18CC-BK	2.5 kV / 2.5 kV	ASD-OLCLR-2N18CC-PC-BK	
	ASD-LCLR-2A-18BK		ASD-LCLS-1B-9BK		ASD-OLCLR-2N18CC-PC-BK-2PACK	
	ASD-OLCLR-2D18CC-BK-2PACK	ASD-LCLS-2B-18BK	ASD-LCLS-1A-9BK-PC	2.5 kV / 2.5 kV		
	ASD-LCLR-1B-9BK	2.5 kV / 2.5 kV	ASD-OLCLR-MV-2D18CC-EM-BZ	1.5 kV / 1.5 kV	ASD-OLCLS-1N9CC-PC-BK	1.25 kV / 1.25 kV
	ASD-LCLR-2B-18BK		ASD-OLCLR-MV-2D18CC-EM-BK	1.25 kV / 1.25 kV	ASD-LCLS-2A-18BK-PC	
	ASD-LCLS-1A-9BK		ASD-OLCLR-1N9CC-PC-BZ			
	ASD-OLCLS-1D9CC-BZ		ASD-LCLR-1A-9BK-PC			
Dimming compatible controls						
Brand	Lutron			Leviton		
	MACL-153MLH-WH	PD-6WCL-WH-R	P-PKG1W	R02-DW6HD-2RW	R68-06674-P0T	
	STCL-153PH-WH	DVCL-153PR		R00-RNL06-0TW	DSL06	
Regular and voluntary certifications						
5-year limited warranty						
cETLus certified 4001256						

BUILT-IN BACK-UP BATTERY INFORMATION

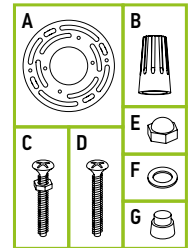
Operating condition	 Blinking
Emergency mode	 OFF
Test switch	

1. Indicator Light is Blinking: Battery back-up recharging.
2. Indicator Light is OFF: Battery back-up is full charge; Battery back-up is working.
3. In order to test the battery back-up press the test switch one time. To turn off the emergency power state press test switch one more time.

Specifications	
Input voltage	100-277 V 50/60 Hz
AC Input current	max 110 mA
AC Input power rating	max 5.0W
Output current and voltage	200 mA 20-36 Vdc
Output power	6W
Lumens	400 lm
Emergency time	min 90 minutes
Warranty	5 years
Indicator light	Illuminated test switch
Battery	Li-ion battery - 11.1 V/2200 mAh
Battery charging current	440 mA
Charging time	8 hours
Temperature rating (ambient)	32°F to 113°F (0°C to 45°C)

PACKAGE CONTENTS:

Description	Quantity
LED Round or Square Outdoor Wall Cylinder	1 (2 for 2 pack)
Mounting plate (A)	1
Wire nut (B)	3
Mounting screw (C)	2
Outlet box screw (D)	2
Decorative nut (E)	2
Waterproof gasket (F)	2
Photocell cap (G) only for PC models	1
Box	1



BUILT-IN PHOTOCELL INFORMATION

The dusk-to-dawn sensor automatically turns the fixture off during daylight hours.

Specifications	
Input power	120 Vac, 60 Hz
Light level to turn ON	30 - 150 lux (2.8 - 14 fc)
Light level to turn OFF	200 - 800 lux (18.6-74.4 fc)
Operating temperature	-4°F to 122°F (-20°C to 50°C)

For most up-to-date spec sheets please refer to asd-lighting.com



LED OUTDOOR WALL CYLINDER

INSTALLATION GUIDE

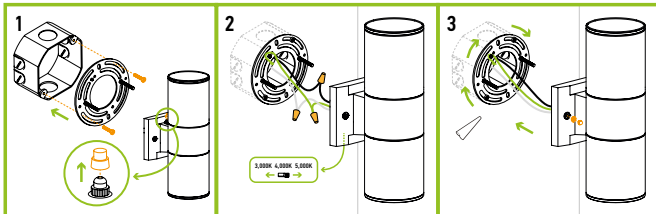
IMPORTANT SAFETY INFORMATION:

Please read all the instructions below before installation.

- ▶ Make sure that the supply voltage corresponds to the rated product voltage.
- ▶ The product must be installed by a qualified electrician in accordance with the National Electrical Code and corresponding local codes.
- ▶ If the product is damaged, do not use it.

INSTALLATION STEPS:

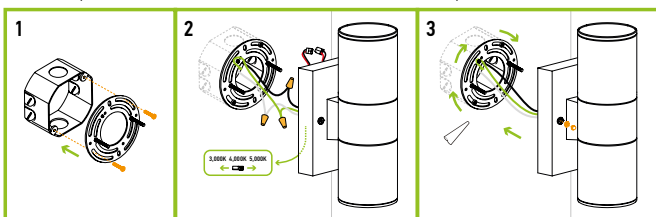
1. Screw the two mounting screws onto the mounting plate. Attach the mounting plate to the outlet box using screws. Make sure the threads of the mounting screws are facing outside when the mounting plate is attached to the outlet box. In models with photocell option remove the photocell cap to make the dusk-to-dawn sensor operate.
2. Choose needed color temperature by adjusting switch position. Connect the wires: Black to Black, White to White, Ground to Ground. Secure the connection with wire nuts.
3. Place the fixture base on the wall by aligning the protruding mounting screws through the holes on the wall plate. Put the waterproof gasket on each mounting screw. Tighten the fixture to the wall using two decorative nuts. For outdoor locations please use silicone (not included) shown in the picture below.



* The fixture must be mounted vertically with the photocell sensor facing up.

BATTERY BACK-UP MODELS INSTALLATION:

1. Screw the two mounting screws onto the mounting plate. Attach the mounting plate to the outlet box using screws. Make sure the threads of the mounting screws are facing outside when the mounting plate is attached to the outlet box.
2. Choose needed color temperature by adjusting switch position. Connect the LED Emergency controller to the battery back-up. Connect the wires: Black to Black, White to White, Ground to Ground. Secure the connection with wire nuts.
3. Place the fixture base on the wall by aligning the protruding mounting screws through the holes on the wall plate. Put the waterproof gasket on each mounting screw. Tighten the fixture to the wall using two decorative nuts. For outdoor locations please use silicone (not included) shown in the picture below.



* The fixture must be mounted vertically with the test-switch facing down.

⚠ WARNING

RISK OF PERSONAL INJURY – READ and follow all WARNINGS and installation instructions. Keep or give to the owner for future reference.

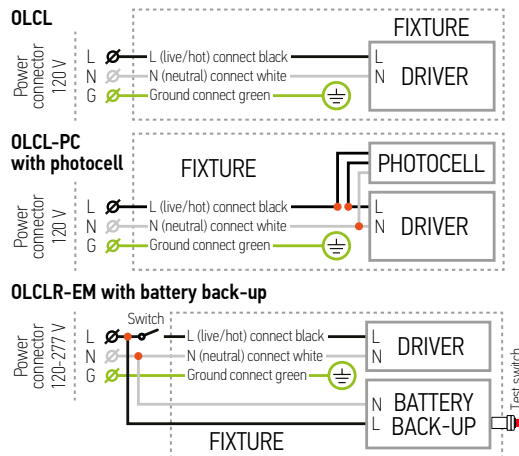
Risk of cuts: Wear gloves to prevent cuts or abrasions when removing from carton, handling, installing, and maintaining this product.

Risk of electric shock: This product must be installed in accordance with the applicable installation code by a person familiar with the construction and operation of the product and the hazards involved.

Risk of Fire: Minimum 194°F supply conductors. Consult a qualified electrician to ensure correct branch circuit conductor.

ASD® assumes no responsibility for claims arising out of improper or careless installation or handling of this product.

ELECTRICAL SCHEMATIC DIAGRAM:



ANNEX 1

Model	Watts	3,000 K	4,000 K	5,000 K
ASD-OLCLR-1D9CC-BZ ASD-OLCLR-1D9CC-BK ASD-OLCLR-1D9CC-BK-2PACK ASD-OLCLR-1N9CC-PC-BZ ASD-LCLR-1A-9BK-PC ASD-OLCLR-1N9CC-PC-BK-2PACK	9W	910 lm	1,002 lm	870 lm
ASD-LCLR-1B-9BK ASD-LCLR-1A-9BK	9W	500 lm	579 lm	556 lm
ASD-LCLR-2A-18BK ASD-OLCLR-2D18CC-BK-2PACK ASD-OLCLR-2N18CC-PC-BZ ASD-LCLR-2A-18BK-PC ASD-OLCLR-2N18CC-PC-BK ASD-OLCLR-2N18CC-PC-BK-2PACK	18W	1,678 lm	1,859 lm	1,745 lm
ASD-LCLR-2B-18BK ASD-OLCLS-1D9CC-BZ ASD-OLCLS-1D9CC-BK ASD-OLCLS-1N9CC-PC-BK	18W	1017 lm	1180 lm	1128 lm
ASD-LCLS-1B-9BK ASD-LCLS-1A-9BK ASD-LCLS-1A-9BK-PC	9W	434 lm	502 lm	482 lm
ASD-LCLS-2A-18BK ASD-LCLS-2A-18BK-PC	18W	831 lm	962 lm	918 lm
ASD-OLCLR-MV-2D18CC-EM-BZ ASD-OLCLR-MV-2D18CC-EM-BK	18W	1,556 lm	1,676 lm	1,529 lm

For most up-to-date spec sheets please refer to asd-lighting.com



LED OUTDOOR WALL CYLINDER

ORDERING INFORMATION

Model	UPC	Pcs. (pack) per carton	Carton size	Carton weight	GTIN 14
OLCLR ROUND					
ASD-OLCLR-1D9CC-BZ	810050736466	6	16.7" x 15.4" x 9.7"	16.7 lbs	30810050736467
ASD-LCLR-1A-9BK	810128117388	2	11.4" x 7.9" x 9.7"	2 lbs	10810128117385
ASD-OLCLR-1D9CC-BK	810050736459	6	16.7" x 15.4" x 9.7"	16.7 lbs	30810050736450
ASD-OLCLR-1D9CC-BK-2PACK	810128112482	6 (2)	24.4" x 11.4" x 9.8"	16.9 lbs	10810128112489
ASD-LCLR-2A-18BK	810128117395	2	11.4" x 7.9" x 13.6"	6.8 lbs	10810128117392
ASD-OLCLR-2D18CC-BK-2PACK	810128111614	6 (2)	24.4" x 11.4" x 13.8"	20.3 lbs	10810128111611
OLCLR ROUND WITH DECORATIVE RING					
ASD-LCLR-1B-9BK	810128118200	2	12.2" x 8.3" x 10.4"	5.5 lbs	10810128118207
ASD-LCLR-2B-18BK	810128118187	2	12.2" x 8.3" x 14.4"	7.4 lbs	10810128118184
OLCLS SQUARE					
ASD-LCLS-1A-9BK	810128118132	6	16.7" x 14.8" x 9.8"	19.4 lbs	10810128118139
ASD-OLCLS-1D9CC-BZ	810050736503	6	16.7" x 15.4" x 9.8"	15.3 lbs	30810050736504
ASD-OLCLS-1D9CC-BK	810050736497	6	16.7" x 15.4" x 9.8"	15.3 lbs	30810050736498
ASD-LCLS-2A-18BK	810128118149	6	16.7" x 14.8" x 12.2"	21.3 lbs	10810128118146
ASD-OLCLS-2D18CC-BZ	810050736527	6	16.7" x 15.4" x 12.2"	19.7 lbs	30810050736528
ASD-OLCLS-2D18CC-BK	810050736510	6	16.7" x 15.4" x 12.2"	19.7 lbs	30810050736511
OLCLR SQUARE WITH DECORATIVE RING					
ASD-LCLS-1B-9BK	810128118194	2	11.4" x 7.7" x 9.8"	5.8 lbs	10810128118191
ASD-LCLS-2B-18BK	810128118170	2	11.4" x 7.7" x 14"	8.2 lbs	10810128118177
OLCLR-EM ROUND WITH BATTERY BACK-UP					
ASD-OLCLR-MV-2D18CC-EM-BZ	810050736800	6	16.7" x 15.8" x 13.8"	21.3 lbs	30810050736801
ASD-OLCLR-MV-2D18CC-EM-BK	810050736794	6	16.7" x 15.8" x 13.8"	21.3 lbs	30810050736795
OLCLR-PC ROUND WITH PHOTOCELL					
ASD-OLCLR-1N9CC-PC-BZ	810050738026	6	16.7" x 15.4" x 9.7"	16.7 lbs	10810050738023
ASD-LCLR-1A-9BK-PC	810128116350	2	11.4" x 7.9" x 9.7"	2 lbs	10810128116357
ASD-OLCLR-1N9CC-PC-BK-2PACK	810128111621	6 (2)	24.4" x 11.4" x 9.8"	20.5 lbs	10810128111628
ASD-OLCLR-2N18CC-PC-BZ	810050738033	6	16.7" x 15.4" x 13.6"	19.7 lbs	10810050738030
ASD-LCLR-2A-18BK-PC	810128117418	2	11.4" x 7.9" x 13.6"	6.8 lbs	10810128117415
ASD-OLCLR-2N18CC-PC-BK	810050736787	6	16.7" x 15.4" x 13.6"	19.7 lbs	30810050736788
ASD-OLCLR-2N18CC-PC-BK-2PACK	810128113885	6 (2)	24.4" x 11.4" x 13.8"	20.3 lbs	10810128113882
OLCLS-PC SQUARE WITH PHOTOCELL					
ASD-LCLS-1A-9BK-PC	810128118156	6	16.7" x 14.8" x 9.8"	19.4 lbs	10810128118153
ASD-OLCLS-1N9CC-PC-BK	810050736817	6	16.7" x 15.4" x 9.8"	15.3 lbs	30810050736818
ASD-LCLS-2A-18BK-PC	810128118163	6	16.7" x 14.8" x 12.2"	21.3 lbs	10810128118160
ASD-OLCLS-2N18CC-PC-BK	810050736824	6	16.7" x 15.4" x 12.2"	17.4 lbs	30810050736825

For most up-to-date spec sheets please refer to asd-lighting.com

ASD LIGHTING CORP

E-mail: orders@asd-lighting.com | Web site: www.asd-lighting.com

