



# LED FLOODLIGHT WITH KNUCKLE

- ▶ **DESIGN** - LED FLOODLIGHT WITH KNUCKLE is highly efficient along with die-cast aluminum housing designed to maximize heat dissipation to ensure longevity. It has tempered glass lens that protect the LED chips and provide high illuminance.
- ▶ **PHOTOCELL** - The built-in Dusk to Dawn Photocell will automatically turn the fixture on/off depending on the time of day. It can be turned off by the switch.
- ▶ **COLOR AND POWER SELECTABLE** - You can choose either a 3,000K warm white, 4,000K cool white or 5,000K daylight color temperature, and change the power with a simple switch.
- ▶ **INSTALLATION** - It comes with a sturdy aluminum arm bracket that can be mounted directly to electrical boxes or to poles with ½" threaded inserts. Perfect commercial or industrial solution for both indoor and outdoor applications such as: gardens, squares, stadiums, streets, yards, exterior accent lighting, and more. It is also Wet Locations rated.
- ▶ **ADVANTAGES** - With calculated lifespan up to 147,000 hours, these fixtures are made to last decades under normal operation! ASD provides a 5-year limited warranty along with UL and DLC Premium certifications to guarantee top quality products and safety!



## PRODUCT PRESENTATION:

Model	Power	Voltage	Lumens	CCT	Finish	Dimensions	Certification
ASD-FL01K-55BK	15/30/55 W	120-277 V	8,379 lm	3,000/4,000/5,000 K	Black	9" x 2-15/16" x 11-11/16"	UL (E473804), DLC Premium
ASD-FL01K-75BK	30/55/75 W	120-277 V	10,428 lm	3,000/4,000/5,000 K	Black	9" x 2-15/16" x 11-11/16"	UL (E473804), DLC Premium

## ORDERING INFORMATION

Model	UPC	Pcs. per carton	Carton size	Carton weight	GTIN 14
ASD-FL01K-55BK	810128113496	4	14.4" x 12.8" x 10.2"	17.2 lbs	10810128113493
ASD-FL01K-75BK	810128113472	4	14.4" x 12.8" x 10.2"	17.2 lbs	10810128113479

For most up-to-date spec sheets please refer to [asd-lighting.com](http://asd-lighting.com)

**ASD LIGHTING CORP**

E-mail: [orders@asd-lighting.com](mailto:orders@asd-lighting.com) | Web site: [www.asd-lighting.com](http://www.asd-lighting.com)





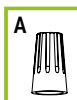
# LED FLOODLIGHT WITH KNUCKLE

## PRODUCT SPECIFICATIONS:

Construction & Materials		
Housing	Aluminum	
Lens	PC	
Finish	Black	
Weight	3.5 lbs (1.6 kg)	
Environmental system		
Work environment	Suitable for Wet Locations, IP65	
Operating temperature	-22°F to 113°F (-30°C to 45°C)	
L-70 Life	R > 54,000 hrs; C > 147,000 hrs	
Optical system		
Luminous flux	ASD-FL01K-55BK	7,605/8,379/8,321 lm
	ASD-FL01K-75BK	9,478/10,428/10,419 lm
Color temperature	3CCT switch (3,000/4,000/5,000 K), 5,000 K by default	
CRI	> 80	
Electrical system		
Input voltage	120-277 V	
Max input current	ASD-FL01K-55BK	0.55 A
	ASD-FL01K-75BK	0.75 A
Inrush current (Action time)	120 A (4 S)	
Off state power	0W	
Power consumption	ASD-FL01K-55BK	15/30/55W
	ASD-FL01K-75BK	30/55/75W
Power factor	> 0.9	
Output voltage	130 V	
Max output current	ASD-FL01K-55BK	0.43 A
	ASD-FL01K-75BK	0.6 A
Surge protection DM/CM	4 kV / 5 kV	
Regular and voluntary certifications		
5-year limited warranty		
DesignLights Consortium (DLC) listed (Classification: Premium)		
UL certified E473804		

## PACKAGE CONTENTS:

Description	Quantity
LED Floodlight with knuckle	1
Wire nut (A)	3
Box	1



## BUILT-IN PHOTOCCELL INFORMATION

The fixtures with a built-in photocell automatically turn off during daylight hours.

Specifications	
Light level to turn ON	≤ 60 lux (≤ 5.6 fc)
Light level to turn OFF	≥ 30 lux (≥ 2.8 fc)
Operating temperature	-40°F to 113°F (-40°C to 50°C)

## INSTALLATION GUIDE

### IMPORTANT SAFETY INFORMATION:

Please read all the instructions below before installation.

- ▶ Make sure that the supply voltage corresponds to the rated product voltage.
- ▶ The product must be installed by a qualified electrician in accordance with the National Electrical Code and corresponding local codes.
- ▶ If the product is damaged, do not use it.

### ⚠ WARNING

**RISK OF PERSONAL INJURY – READ and follow all WARNINGS and installation instructions.** Keep or give to the owner for future reference.

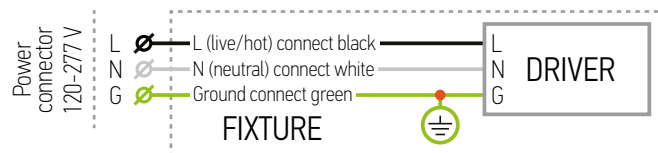
**Risk of cuts:** Wear gloves to prevent cuts or abrasions when removing from carton, handling, installing, and maintaining this product.

**Risk of electric shock:** This product must be installed in accordance with the applicable installation code by a person familiar with the construction and operation of the product and the hazards involved.

**Risk of Fire:** Minimum 194°F supply conductors. Consult a qualified electrician to ensure correct branch circuit conductor.

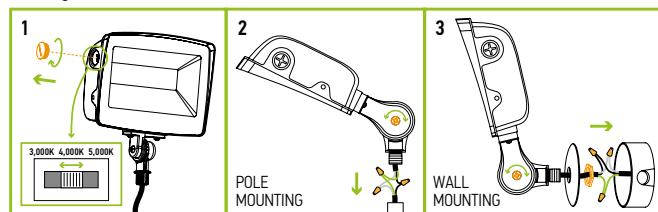
ASD® assumes no responsibility for claims arising out of improper or careless Installation or handling of this product.

### ELECTRICAL SCHEMATIC DIAGRAM:



### INSTALLATION STEPS:

1. Default color temperature is 5,000K. Adjust color temperature and power (if needed) by unscrewing one big cap in the corner of the fixture and set switches to necessary values.
2. **Pole installation:** The floodlight can be mounted directly to a pole with a 1/2" threaded insert. Connect the wires: Black to Black, White to White, Green to Green. Secure the connection with Wire Nuts. Loosen the M5 bolt and adjust the installed angle as your request, and then tighten the M5 bolt.
3. **J-box installation:** The floodlight can be mounted directly to an electrical box (cover plate is not included). Remove screw-nut, connect the wires: Black to Black, White to White, Green to Green, secure the connection with Wire Nuts, and tighten screw nut. Loosen the M5 bolt and adjust the installed angle as your request, and then tighten the M5 bolt.



For most up-to-date spec sheets please refer to [asd-lighting.com](http://asd-lighting.com)