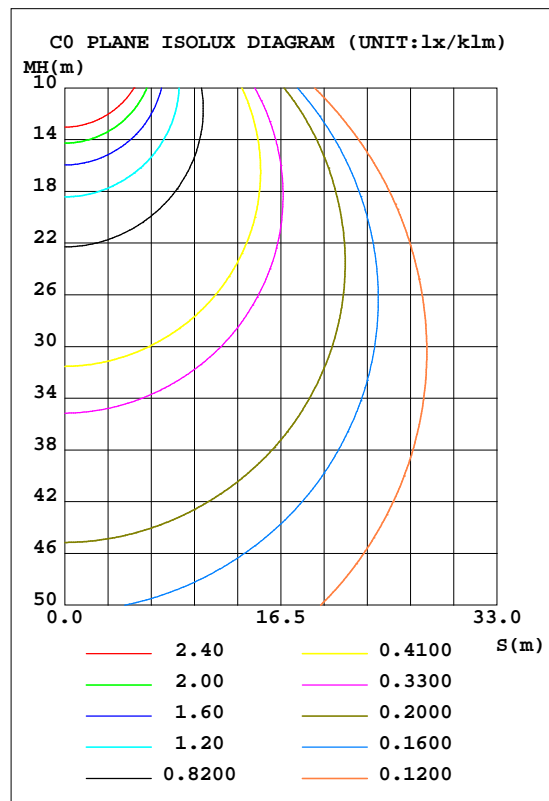
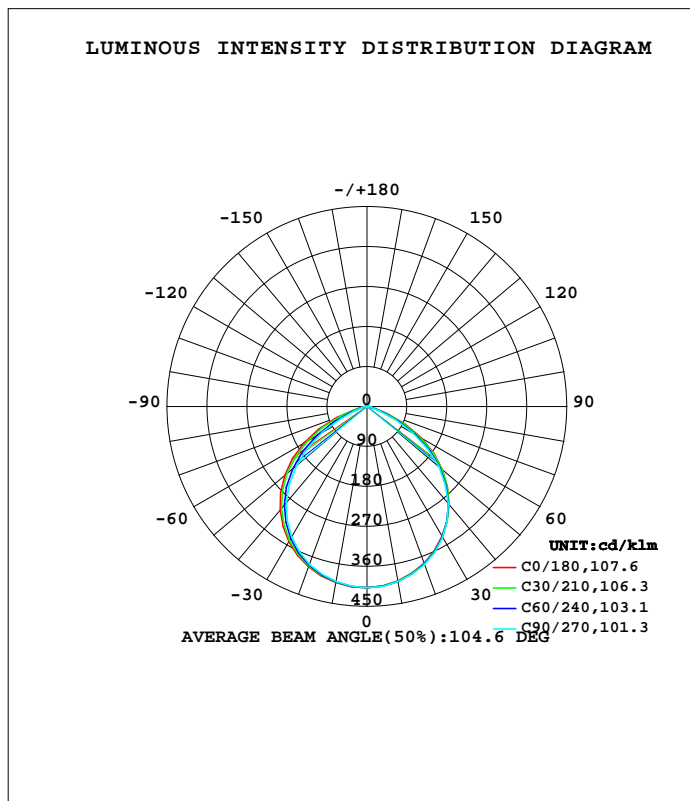


LUMINAIRE PHOTOMETRIC TEST REPORT

Test:U:120.10V I:0.0937A P:9.2917W PF:0.8253 Freq:59.98Hz Lamp Flux:701.643x1 lm		
NAME: LED DOWNLIGHT	TYPE:	WEIGHT:
SPEC.:	DIM.:	SERIAL No.:
MFR.: ASD LIGHTING CORP	SUR.:	Shielding Angle:

DATA OF LAMP		PHOTOMETRIC DATA Eff: 75.51 lm/W			
MODEL: LRKR-4D10AC-WH(3000K)		I _{max} (cd/klm)	408.0	S/MH(C0/180)	1.28
NOMINAL POWER(W)	10	LOR(%)	100.0	S/MH(C90/270)	1.24
RATED VOLTAGE(V)	120	TOTAL FLUX(lm/klm)	1000.00	h UP, DN(C0-180)	0.5,49.6
NOMINAL FLUX(lm)	701.643	CIE CLASS	DIRECT	h UP, DN(C180-360)	0.5,49.4
LAMPS INSIDE	1	h up(%)	0.9	CIBSE SHR NOM	1.25
TEST VOLTAGE(V)	120	h down(%)	99.1	CIBSE SHR MAX	1.35



C Range: 0 - 360DEG
 C Interval: 15.0DEG
 Test Speed: HIGH
 Temperature: 25.3DEG
 Operators:
 Test Date: 2022-03-01

g Range: 0 - 180DEG
 g Interval: 5.0DEG
 Test System: EVERFINE GO-2000B_V1 SYSTEM V2.00.426
 Humidity: 65.0%
 Test Distance: 8.000m [K=1.0125]
 Remarks:

ZONAL FLUX DIAGRAM

ZONAL FLUX DIAGRAM:

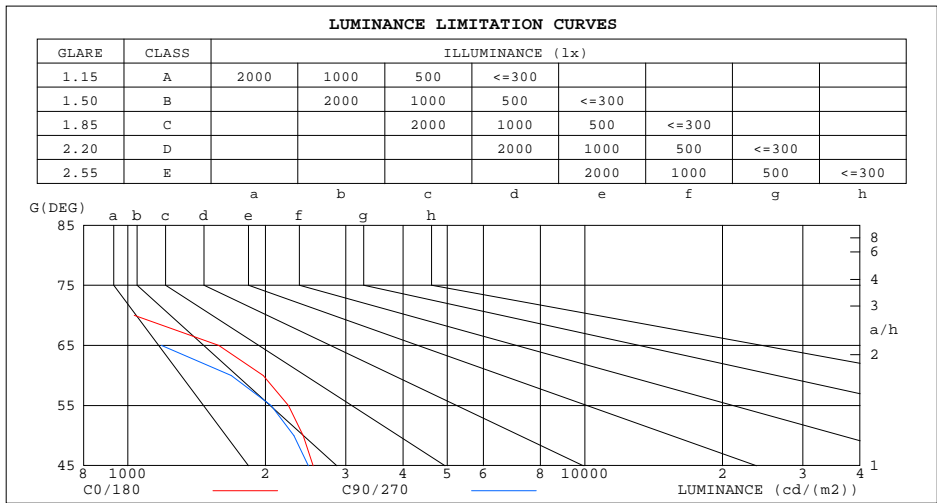
g	C0	C45	C90	C135	C180	C225	C270	C315	g	F zone	F total	%lum,lamp
10	399.0	399.9	400.3	402.0	402.7	401.4	400.3	399.1	0- 10	38.60	38.60	3.86,3.86
20	375.6	378.5	378.5	382.7	384.6	380.7	378.7	376.0	10- 20	110.5	149.1	14.9,14.9
30	338.3	341.5	340.1	347.4	351.4	343.9	339.4	337.2	20- 30	167.1	316.2	31.6,31.6
40	287.6	288.9	284.8	296.3	303.7	293.0	282.4	283.1	30- 40	198.8	515.0	51.5,51.5
50	221.7	219.9	211.5	229.2	242.5	225.7	207.6	213.1	40- 50	198.3	713.3	71.3,71.3
60	141.1	134.1	120.0	144.0	164.3	142.1	114.8	126.8	50- 60	160.7	874.0	87.4,87.4
70	50.41	42.32	32.23	48.94	72.40	48.75	29.46	36.47	60- 70	88.46	962.4	96.2,96.2
80	9.625	8.948	8.220	10.12	12.04	9.857	7.776	8.147	70- 80	24.09	986.5	98.7,98.7
90	0.2676	0.2109	0.1453	0.2106	0.3878	0.2056	0.1055	0.1778	80- 90	4.184	990.7	99.1,99.1
100	0.6712	0.5928	0.5391	0.5727	0.4943	0.4210	0.3821	0.5193	90-100	0.3744	991.1	99.1,99.1
110	1.093	1.040	1.026	1.040	0.8960	0.8553	0.8758	1.039	100-110	0.7946	991.9	99.2,99.2
120	1.567	1.488	1.480	1.467	1.350	1.349	1.396	1.480	110-120	1.206	993.1	99.3,99.3
130	1.995	1.916	1.921	1.895	1.792	1.770	1.850	1.901	120-130	1.495	994.6	99.5,99.5
140	2.324	2.205	2.276	2.132	2.121	2.060	2.211	2.125	130-140	1.578	996.2	99.6,99.6
150	2.601	2.554	2.520	2.480	2.450	2.435	2.481	2.486	140-150	1.467	997.6	99.8,99.8
160	2.891	2.890	2.928	2.862	2.753	2.810	2.869	2.874	150-160	1.230	998.9	99.9,99.9
170	3.128	3.120	3.093	3.092	3.043	3.048	3.047	3.098	160-170	0.8411	999.7	100,100
180	3.233	3.265	3.231	3.269	3.233	3.265	3.238	3.269	170-180	0.3015	1000.0	100,100
DEG	LUMINOUS INTENSITY:cd/klm									UNIT:lm/klm		

C Range: 0 - 360DEG
C Interval: 15.0DEG
Test Speed: HIGH
Temperature:25.3DEG
Operators:
Test Date:2022-03-01

g Range: 0 - 180DEG
g Interval: 5.0DEG
Test System:EVERFINE GO-2000B_V1 SYSTEM V2.00.426
Humidity:65.0%
Test Distance:8.000m [K=1.0125]
Remarks:

LUMINANCE LIMITATION CURVES

Test:U:120.10V I:0.0937A P:9.2917W PF:0.8253 Freq:59.98Hz Lamp Flux:701.643x1 lm		
NAME: LED DOWNLIGHT	TYPE:	WEIGHT:
SPEC.:	DIM.:	SERIAL No.:
MFR.: ASD LIGHTING CORP	SUR.:	Shielding Angle:



LUMINANCE cd/(m2)		
G(DEG)	C0/180	C90/270
85	302	136
80	389	332
75	490	396
70	1034	661
65	1580	1184
60	1978	1684
55	2248	2060
50	2419	2309
45	2543	2485

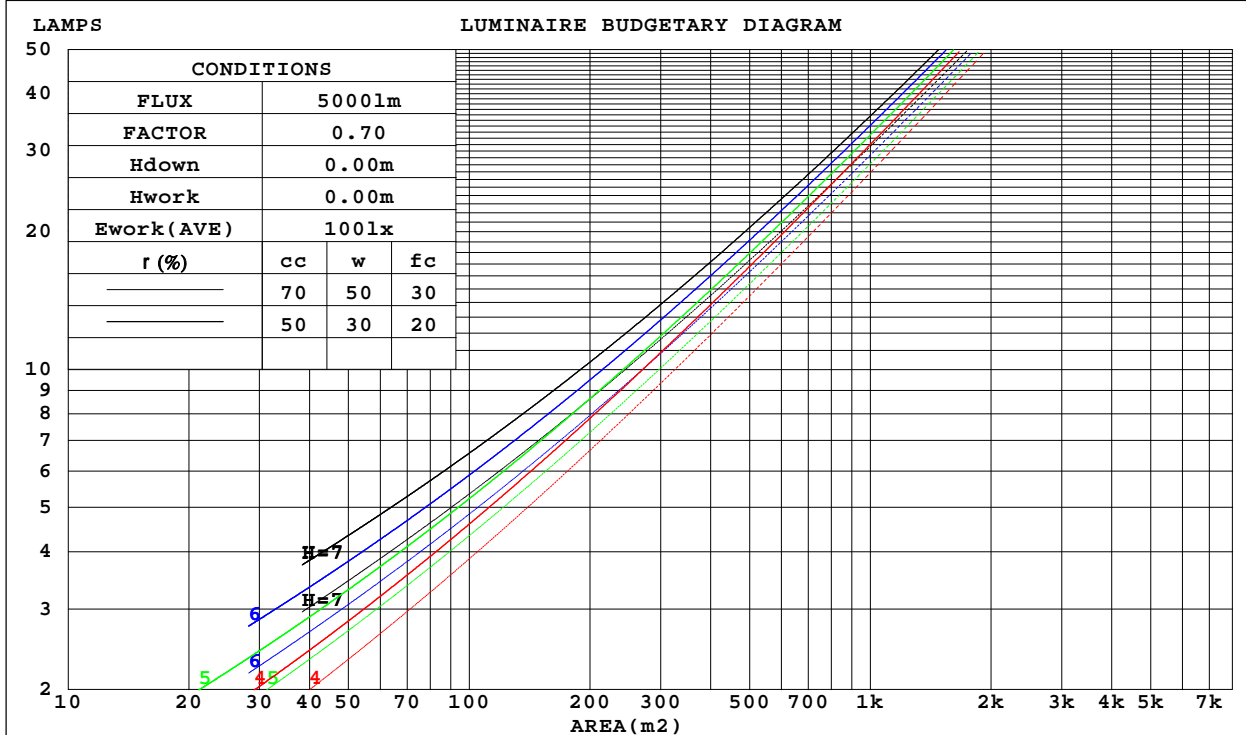
C Range: 0 - 360DEG
 C Interval: 15.0DEG
 Test Speed: HIGH
 Temperature: 25.3DEG
 Operators:
 Test Date: 2022-03-01

g Range: 0 - 180DEG
 g Interval: 5.0DEG
 Test System: EVERFINE GO-2000B_V1 SYSTEM V2.00.426
 Humidity: 65.0%
 Test Distance: 8.000m [K=1.0125]
 Remarks:

CU AND LUMINAIRE BUDGETARY ESTIMATE DIAGRAM

Test:U:120.10V I:0.0937A P:9.2917W PF:0.8253 Freq:59.98Hz Lamp Flux:701.643x1 lm		
NAME: LED DOWNLIGHT	TYPE:	WEIGHT:
SPEC.:	DIM.:	SERIAL No.:
MFR.: ASD LIGHTING CORP	SUR.:	Shielding Angle:

r _{cc}	80%			70%			50%			30%			10%			0
r _w	50%	30%	10%	50%	30%	10%	50%	30%	10%	50%	30%	10%	50%	30%	10%	0
r _{fc}	20%			20%			20%			20%			20%			0
RCR	RCR:Room Cavity Ratio						Coefficients of Utilization(CU)									
0.0	1.19	1.19	1.19	1.16	1.16	1.16	1.11	1.11	1.11	1.06	1.06	1.06	1.01	1.01	1.01	.99
1.0	1.06	1.03	.99	1.04	1.01	.98	.99	.97	.94	.95	.93	.91	.92	.90	.88	.86
2.0	.94	.88	.83	.92	.87	.82	.89	.84	.80	.85	.81	.78	.82	.79	.76	.74
3.0	.84	.76	.70	.82	.75	.70	.79	.73	.68	.76	.71	.67	.73	.69	.66	.64
4.0	.75	.66	.60	.73	.66	.60	.71	.64	.59	.68	.63	.58	.66	.61	.57	.55
5.0	.67	.59	.52	.66	.58	.52	.64	.57	.51	.62	.56	.51	.60	.54	.50	.48
6.0	.60	.52	.46	.59	.52	.46	.58	.51	.45	.56	.50	.45	.54	.49	.44	.42
7.0	.55	.47	.41	.54	.46	.41	.53	.45	.40	.51	.45	.40	.50	.44	.40	.38
8.0	.50	.42	.37	.50	.42	.36	.48	.41	.36	.47	.40	.36	.46	.40	.36	.34
9.0	.46	.38	.33	.46	.38	.33	.44	.37	.33	.43	.37	.32	.42	.36	.32	.30
10.0	.43	.35	.30	.42	.35	.30	.41	.34	.30	.40	.34	.29	.39	.33	.29	.28



C Range: 0 - 360DEG
 C Interval: 15.0DEG
 Test Speed: HIGH
 Temperature:25.3DEG
 Operators:
 Test Date:2022-03-01

g Range: 0 - 180DEG
 g Interval: 5.0DEG
 Test System:EVERFINE GO-2000B_V1 SYSTEM V2.00.426
 Humidity:65.0%
 Test Distance:8.000m [K=1.0125]
 Remarks:

WEC AND CCEC

Test:U:120.10V I:0.0937A P:9.2917W PF:0.8253 Freq:59.98Hz Lamp Flux:701.643x1 lm		
NAME: LED DOWNLIGHT	TYPE:	WEIGHT:
SPEC.:	DIM.:	SERIAL No.:
MFR.: ASD LIGHTING CORP	SUR.:	Shielding Angle:

r cc	80%			70%			50%			30%			10%			0
r w	50%	30%	10%	50%	30%	10%	50%	30%	10%	50%	30%	10%	50%	30%	10%	0
r fc	20%			20%			20%			20%			20%			0
RCR	RCR:Room Cavity Ratio						Wall Exitance Coefficients(WEC)									
0.0																
1.0	.262	.149	.047	.254	.145	.046	.241	.138	.044	.228	.132	.042	.217	.126	.041	
2.0	.255	.140	.043	.249	.137	.042	.237	.132	.041	.226	.127	.040	.216	.122	.038	
3.0	.242	.129	.039	.236	.127	.038	.226	.122	.037	.216	.119	.036	.207	.115	.036	
4.0	.228	.118	.035	.223	.116	.034	.213	.113	.034	.205	.110	.033	.197	.107	.033	
5.0	.213	.109	.031	.209	.107	.031	.201	.104	.031	.193	.102	.030	.186	.099	.030	
6.0	.200	.100	.029	.196	.099	.029	.189	.097	.028	.182	.094	.028	.175	.092	.027	
7.0	.188	.093	.026	.184	.092	.026	.178	.090	.026	.171	.088	.026	.166	.086	.025	
8.0	.177	.086	.024	.173	.085	.024	.167	.084	.024	.162	.082	.024	.157	.080	.023	
9.0	.166	.080	.022	.164	.080	.022	.158	.078	.022	.153	.077	.022	.148	.075	.022	
10.0	.157	.075	.021	.155	.075	.021	.150	.073	.021	.145	.072	.020	.141	.071	.020	

r cc	80%			70%			50%			30%			10%			0
r w	50%	30%	10%	50%	30%	10%	50%	30%	10%	50%	30%	10%	50%	30%	10%	0
r fc	20%			20%			20%			20%			20%			0
RCR	RCR:Room Cavity Ratio						Ceiling Cavity Exitance Coefficients(CCEC)									
0.0	.198	.198	.198	.169	.169	.169	.115	.115	.115	.066	.066	.066	.021	.021	.021	
1.0	.184	.164	.145	.158	.140	.125	.108	.097	.086	.062	.056	.050	.020	.018	.016	
2.0	.175	.139	.110	.149	.120	.095	.102	.083	.066	.059	.048	.039	.019	.016	.013	
3.0	.166	.121	.085	.143	.105	.074	.098	.073	.052	.057	.042	.031	.018	.014	.010	
4.0	.159	.108	.069	.136	.093	.060	.094	.065	.042	.054	.038	.025	.017	.012	.008	
5.0	.152	.097	.057	.130	.084	.050	.090	.059	.035	.052	.034	.021	.017	.011	.007	
6.0	.145	.089	.048	.125	.077	.042	.086	.054	.030	.050	.032	.018	.016	.010	.006	
7.0	.139	.082	.042	.119	.071	.037	.082	.050	.026	.048	.029	.015	.015	.010	.005	
8.0	.133	.076	.037	.114	.066	.032	.079	.046	.023	.046	.027	.014	.015	.009	.005	
9.0	.127	.071	.033	.109	.062	.029	.076	.043	.021	.044	.026	.012	.014	.008	.004	
10.0	.121	.067	.030	.105	.058	.027	.073	.041	.019	.042	.024	.011	.014	.008	.004	

C Range: 0 - 360DEG
 C Interval: 15.0DEG
 Test Speed: HIGH
 Temperature:25.3DEG
 Operators:
 Test Date:2022-03-01

g Range: 0 - 180DEG
 g Interval: 5.0DEG
 Test System:EVERFINE GO-2000B_V1 SYSTEM V2.00.426
 Humidity:65.0%
 Test Distance:8.000m [K=1.0125]
 Remarks:

UGR(Unified Glare Rating) Table

Test:U:120.10V I:0.0937A P:9.2917W PF:0.8253 Freq:59.98Hz Lamp Flux:701.643x1 lm										
NAME: LED DOWNLIGHT					TYPE:			WEIGHT:		
SPEC.:					DIM.:			SERIAL No.:		
MFR.: ASD LIGHTING CORP					SUR.:			Shielding Angle:		
ceiling/cavity	0.7	0.7	0.5	0.5	0.3	0.7	0.7	0.5	0.5	0.3
walls	0.5	0.3	0.5	0.3	0.3	0.5	0.3	0.5	0.3	0.3
working plane	0.2	0.2	0.2	0.2	0.2	0.2	0.2	0.2	0.2	0.2
Room dimensions	Viewed crosswise					Viewed endwise				
x = 2H y = 2H	16.1	17.6	16.5	17.9	18.3	15.5	17.0	15.9	17.3	17.7
3H	16.9	18.2	17.3	18.6	18.9	15.9	17.2	16.3	17.6	18.0
4H	16.9	18.2	17.3	18.5	19.0	15.9	17.2	16.3	17.5	17.9
6H	16.9	18.1	17.3	18.5	18.9	15.9	17.1	16.3	17.5	17.9
8H	16.9	18.0	17.3	18.4	18.8	15.9	17.0	16.3	17.4	17.8
12H	16.9	17.9	17.3	18.3	18.8	15.9	16.9	16.3	17.3	17.8
4H 2H	16.4	17.6	16.8	18.0	18.4	15.9	17.2	16.4	17.6	18.0
3H	17.2	18.2	17.6	18.7	19.1	16.4	17.5	16.8	17.9	18.3
4H	17.3	18.2	17.7	18.6	19.1	16.5	17.4	16.9	17.8	18.3
6H	17.3	18.1	17.8	18.6	19.1	16.5	17.3	16.9	17.7	18.2
8H	17.3	18.0	17.8	18.5	19.0	16.5	17.2	16.9	17.7	18.2
12H	17.3	17.9	17.8	18.4	18.9	16.4	17.1	16.9	17.6	18.1
8H 4H	17.2	18.0	17.7	18.4	18.9	16.5	17.2	16.9	17.7	18.2
6H	17.3	17.9	17.8	18.4	18.9	16.5	17.1	17.0	17.6	18.1
8H	17.3	17.8	17.8	18.3	18.8	16.5	17.0	17.0	17.6	18.1
12H	17.3	17.7	17.8	18.3	18.8	16.5	17.0	17.0	17.5	18.1
12H 4H	17.2	17.9	17.7	18.4	18.9	16.4	17.1	16.9	17.6	18.1
6H	17.2	17.8	17.8	18.3	18.8	16.5	17.0	17.0	17.5	18.1
8H	17.2	17.7	17.8	18.2	18.8	16.5	17.0	17.0	17.5	18.1
CIE190: 2010										

CIE190: 2010
Area: 0.1 m2

C Range: 0 - 360DEG
C Interval: 15.0DEG
Test Speed: HIGH
Temperature:25.3DEG
Operators:
Test Date:2022-03-01

g Range: 0 - 180DEG
g Interval: 5.0DEG
Test System:EVERFINE GO-2000B_V1 SYSTEM V2.00.426
Humidity:65.0%
Test Distance:8.000m [K=1.0125]
Remarks:

UTILIZATION FACTORS TABLE

Test:U:120.10V I:0.0937A P:9.2917W PF:0.8253 Freq:59.98Hz Lamp Flux:701.643x1 lm		
NAME: LED DOWNLIGHT	TYPE:	WEIGHT:
SPEC.:	DIM.:	SERIAL No.:
MFR.: ASD LIGHTING CORP	SUR.:	Shielding Angle:

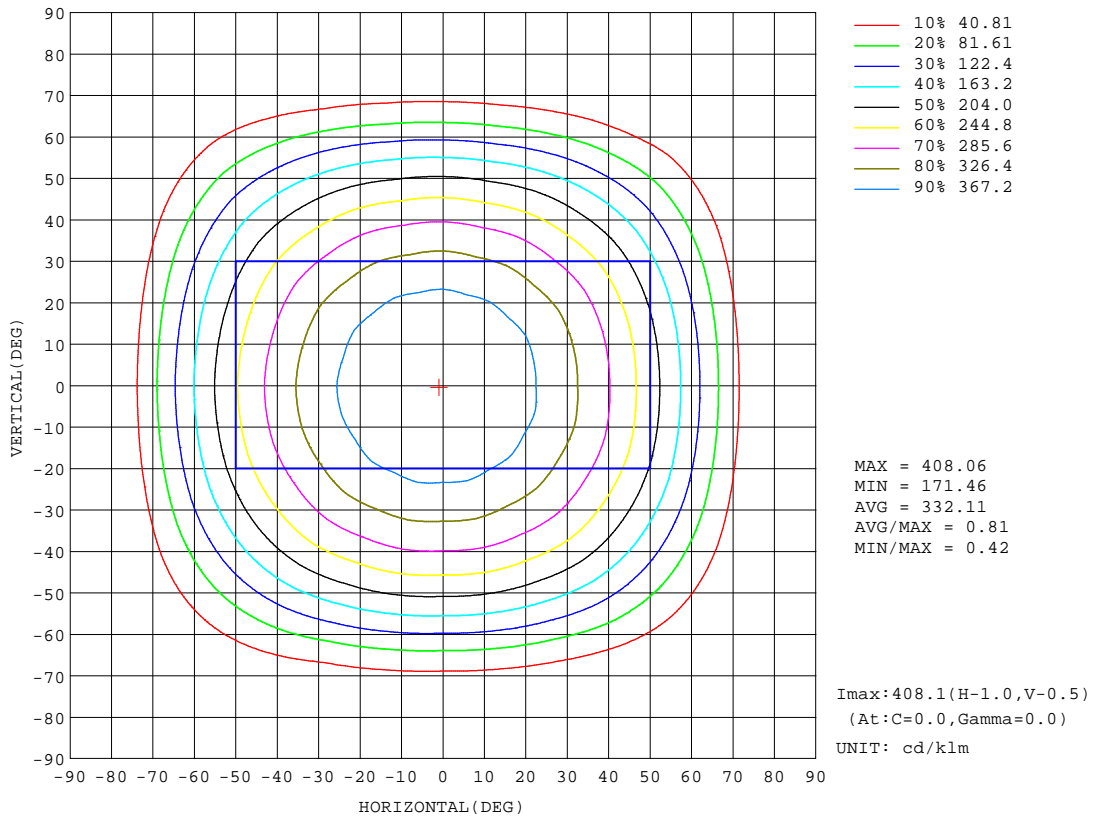
REFLECTANCE										
Ceiling	0.8	0.8	0.8	0.7	0.7	0.7	0.5	0.5	0.5	0
Walls	0.7	0.5	0.3	0.7	0.5	0.3	0.7	0.5	0.3	0
Working plane	0.2	0.2	0.2	0.2	0.2	0.2	0.2	0.2	0.2	0
ROOM INDEX	UTILIZATION FACTORS (PERCENT) $k(RI) \times RCR = 5$									
k = 0.60	61	50	43	60	50	43	59	49	43	37
0.80	71	61	54	70	60	54	69	59	53	47
1.00	80	70	63	79	70	63	77	71	63	56
1.25	87	78	72	86	77	71	83	76	70	63
1.50	92	83	77	90	82	77	87	81	75	69
2.00	98	91	85	97	90	85	93	88	83	76
2.50	102	95	90	100	94	89	96	91	87	79
3.00	105	99	94	103	97	93	99	94	91	83
4.00	108	103	99	106	102	98	102	98	95	86
5.00	110	106	103	108	104	101	103	100	98	89
ROOM INDEX	UF(total)									Direct
According to DIN EN 13032-2 2004			Suspended				SHRNOM = 1.25			

C Range: 0 - 360DEG
C Interval: 15.0DEG
Test Speed: HIGH
Temperature: 25.3DEG
Operators:
Test Date: 2022-03-01

g Range: 0 - 180DEG
g Interval: 5.0DEG
Test System: EVERFINE GO-2000B_V1 SYSTEM V2.00.426
Humidity: 65.0%
Test Distance: 8.000m [K=1.0125]
Remarks:

ISOCANDELA DIAGRAM

Test:U:120.10V I:0.0937A P:9.2917W PF:0.8253 Freq:59.98Hz Lamp Flux:701.643x1 lm		
NAME: LED DOWNLIGHT	TYPE:	WEIGHT:
SPEC.:	DIM.:	SERIAL No.:
MFR.: ASD LIGHTING CORP	SUR.:	Shielding Angle:



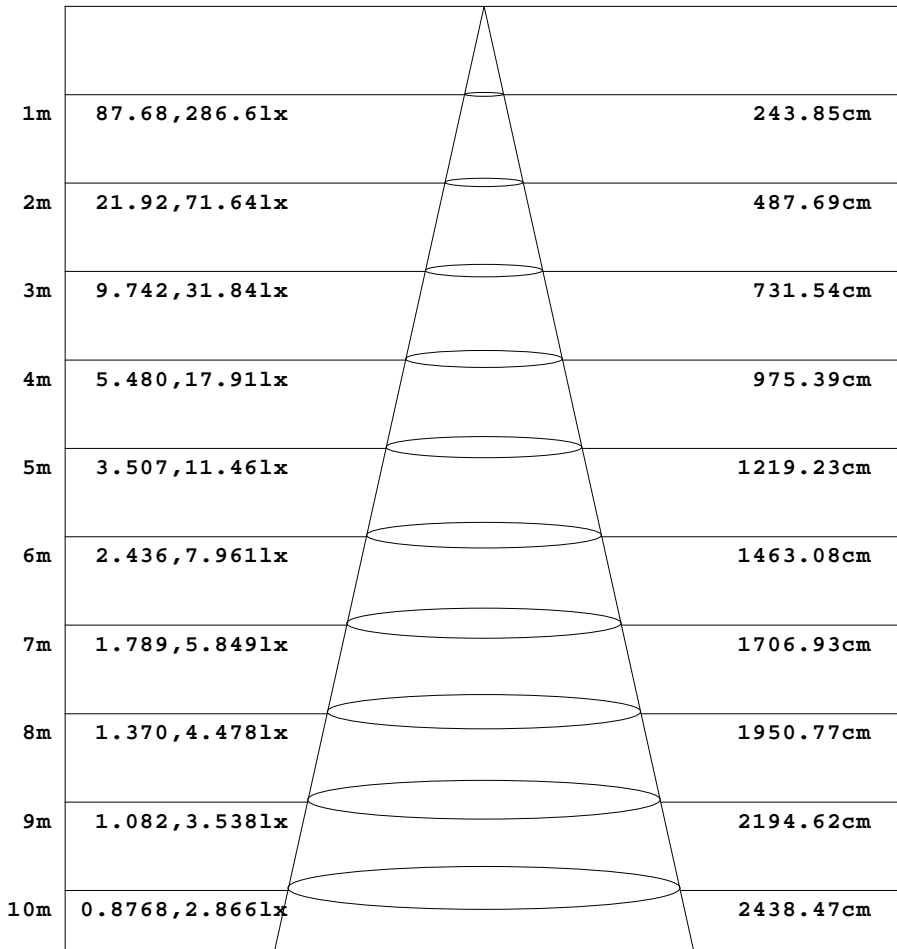
C Range: 0 - 360DEG
 C Interval: 15.0DEG
 Test Speed: HIGH
 Temperature:25.3DEG
 Operators:
 Test Date:2022-03-01

g Range: 0 - 180DEG
 g Interval: 5.0DEG
 Test System:EVERFINE GO-2000B_V1 SYSTEM V2.00.426
 Humidity:65.0%
 Test Distance:8.000m [K=1.0125]
 Remarks:

AAI Figure

Test:U:120.10V I:0.0937A P:9.2917W PF:0.8253 Freq:59.98Hz Lamp Flux:701.643x1 lm		
NAME: LED DOWNLIGHT	TYPE:	WEIGHT:
SPEC.:	DIM.:	SERIAL No.:
MFR.: ASD LIGHTING CORP	SUR.:	Shielding Angle:

Flux out:561.8 lm



Height Eavg, Emax Angle:101.28deg Diameter

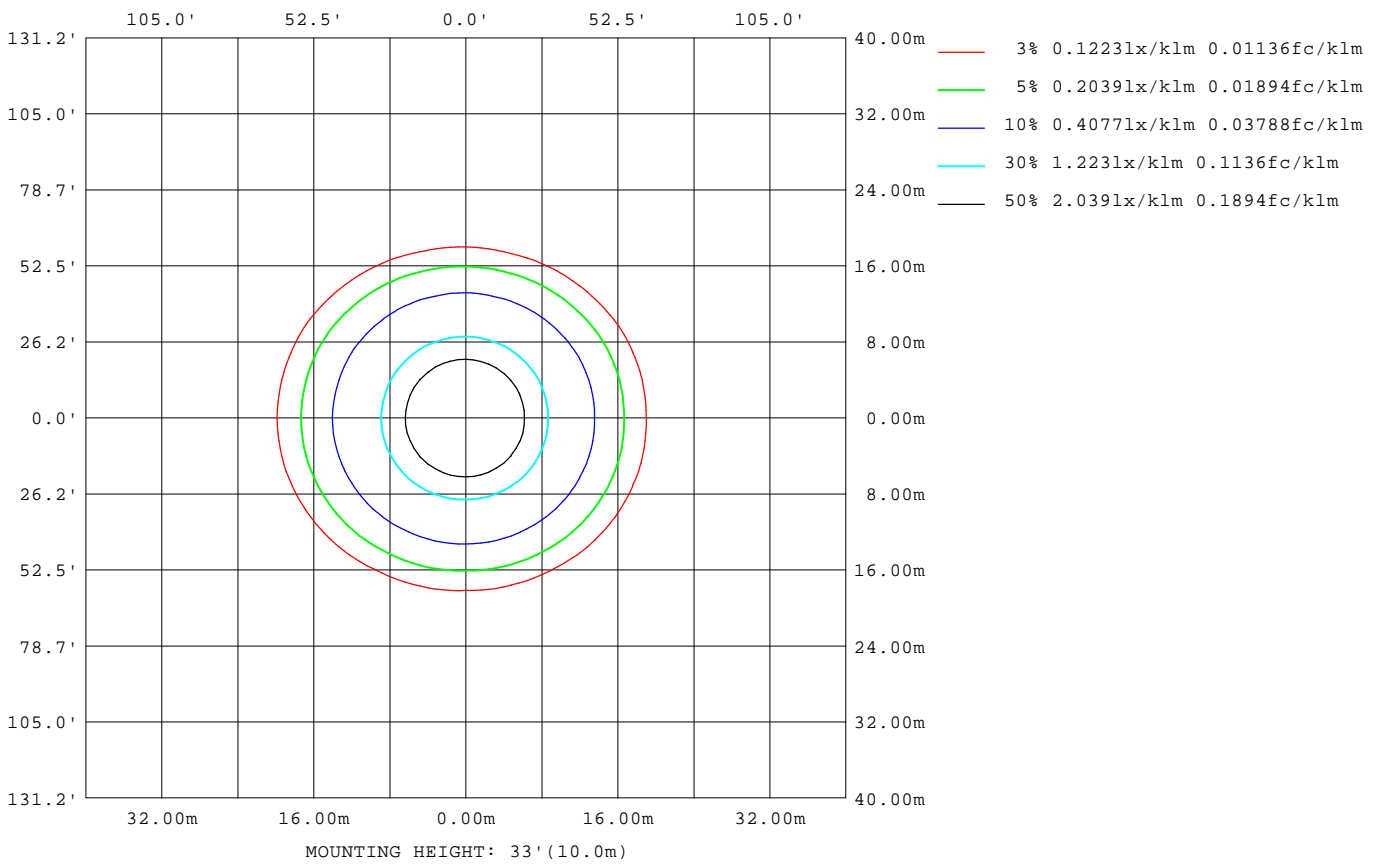
Note:The Curves indicate the illuminated area and the average illumination when the luminaire is at different distance.

C Range: 0 - 360DEG
 C Interval: 15.0DEG
 Test Speed: HIGH
 Temperature:25.3DEG
 Operators:
 Test Date:2022-03-01

g Range: 0 - 180DEG
 g Interval: 5.0DEG
 Test System:EVERFINE GO-2000B_V1 SYSTEM V2.00.426
 Humidity:65.0%
 Test Distance:8.000m [K=1.0125]
 Remarks:

ISOLUX DIAGRAM

Test:U:120.10V I:0.0937A P:9.2917W PF:0.8253 Freq:59.98Hz Lamp Flux:701.643x1 lm		
NAME: LED DOWNLIGHT	TYPE:	WEIGHT:
SPEC.:	DIM.:	SERIAL No.:
MFR.: ASD LIGHTING CORP	SUR.:	Shielding Angle:



C Range: 0 - 360DEG
 C Interval: 15.0DEG
 Test Speed: HIGH
 Temperature: 25.3DEG
 Operators:
 Test Date: 2022-03-01

g Range: 0 - 180DEG
 g Interval: 5.0DEG
 Test System: EVERFINE GO-2000B_V1 SYSTEM V2.00.426
 Humidity: 65.0%
 Test Distance: 8.000m [K=1.0125]
 Remarks:

LED Avg.L Report

Test:U:120.10V I:0.0937A P:9.2917W PF:0.8253 Freq:59.98Hz Lamp Flux:701.643x1 lm		
NAME: LED DOWNLIGHT	TYPE:	WEIGHT:
SPEC.:	DIM.:	SERIAL No.:
MFR.: ASD LIGHTING CORP	SUR.:	Shielding Angle:

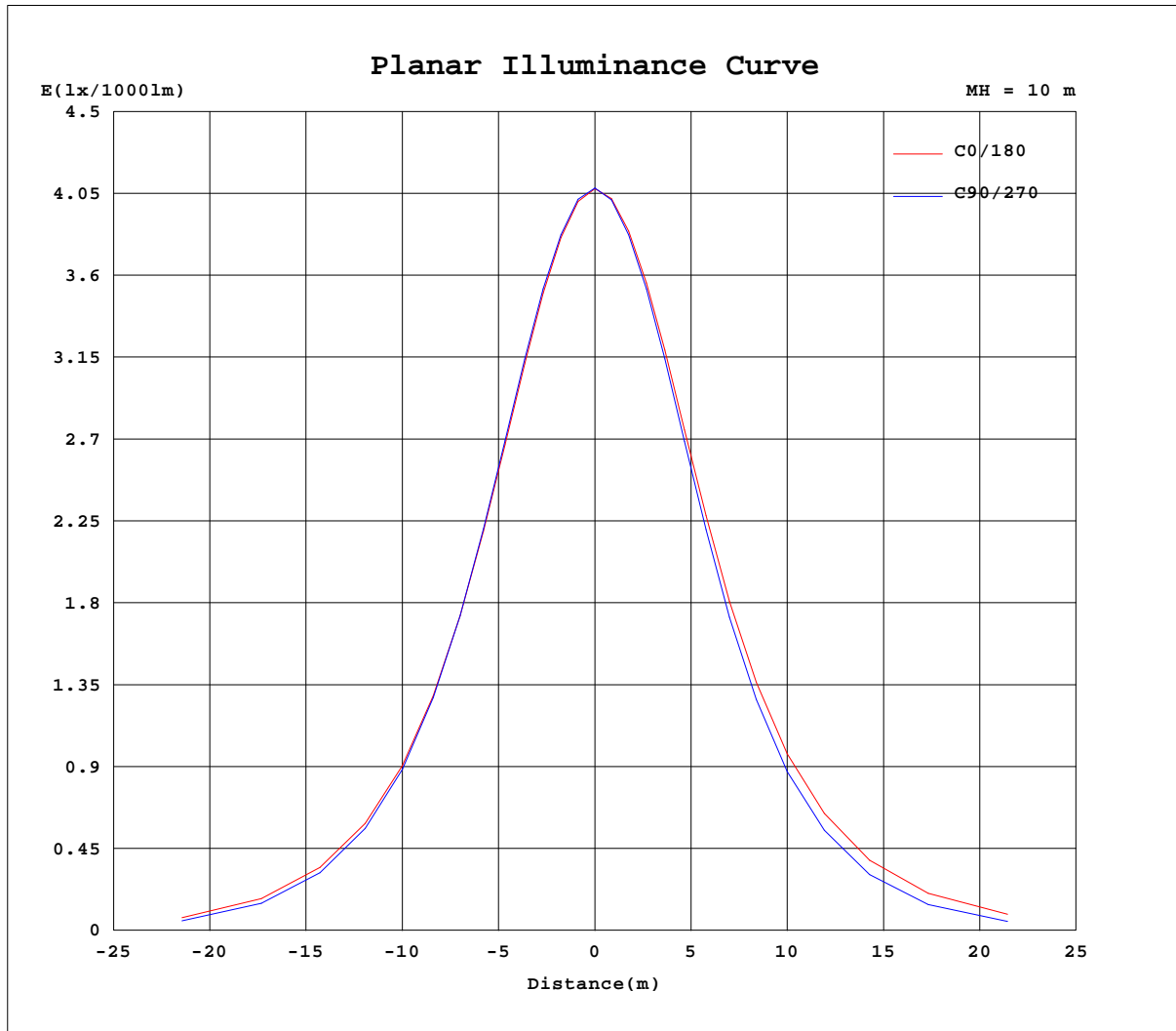
AvgL	cd/m2
L_0~180(65)av	1781
L_0~180(75)av	663
L_0~180(85)av	394
L_90~270(65)av	1145
L_90~270(75)av	390
L_90~270(85)av	119
L_45(65)av	1473
L_45(75)av	463
L_45(85)av	214

Standard: GB/T 29293-2012

C Range: 0 - 360DEG
C Interval: 15.0DEG
Test Speed: HIGH
Temperature:25.3DEG
Operators:
Test Date:2022-03-01

g Range: 0 - 180DEG
g Interval: 5.0DEG
Test System:EVERFINE GO-2000B_V1 SYSTEM V2.00.426
Humidity:65.0%
Test Distance:8.000m [K=1.0125]
Remarks:

Planar Illuminance Curve



C Range: 0 - 360DEG
 C Interval: 15.0DEG
 Test Speed: HIGH
 Temperature: 25.3DEG
 Operators:
 Test Date: 2022-03-01

g Range: 0 - 180DEG
 g Interval: 5.0DEG
 Test System: EVERFINE GO-2000B_V1 SYSTEM V2.00.426
 Humidity: 65.0%
 Test Distance: 8.000m [K=1.0125]
 Remarks:

LUMINOUS DISTRIBUTION INTENSITY DATA

Test:U:120.10V I:0.0937A P:9.2917W PF:0.8253 Freq:59.98Hz Lamp Flux:701.643x1 lm		
NAME: LED DOWNLIGHT	TYPE:	WEIGHT:
SPEC.:	DIM.:	SERIAL No.:
MFR.: ASD LIGHTING CORP	SUR.:	Shielding Angle:

Table--1

UNIT: cd/klm

C(DEG) g (DEG)	0	15	30	45	60	75	90	105	120	135	150	165	180	195	210	225	240	255	270
0	408	408	408	408	408	408	408	408	408	408	408	408	408	408	408	408	408	408	408
5	405	406	405	406	406	406	406	407	407	407	407	407	407	407	407	407	407	406	406
10	399	400	399	400	400	401	400	401	401	402	402	402	403	402	402	401	401	400	400
15	389	390	389	391	390	393	391	394	392	394	393	394	395	394	394	392	393	391	391
20	376	378	376	379	377	380	379	381	380	383	382	383	385	382	383	381	381	378	379
25	359	361	360	362	361	363	362	364	364	367	366	368	370	367	368	364	364	361	361
30	338	341	339	342	339	342	340	344	343	347	347	350	351	348	349	344	343	339	339
35	315	317	315	317	315	316	315	318	319	324	324	328	329	327	326	320	319	314	313
40	288	290	288	289	285	287	285	289	290	296	298	302	304	301	300	293	290	283	282
45	256	259	256	257	252	253	250	255	257	265	267	273	275	271	269	261	257	249	247
50	222	224	221	220	214	214	212	216	220	229	234	240	242	238	235	226	219	210	208
55	184	185	182	179	173	170	168	173	179	189	196	202	205	201	197	187	177	167	163
60	141	142	139	134	126	122	120	125	132	144	153	161	164	161	154	142	130	119	115
65	95.3	96.6	92.4	86.3	77.3	73.4	71.3	75.6	82.3	95.5	107	116	119	116	109	94.4	81.5	70.5	66.6
70	50.4	51.8	48.1	42.3	35.4	33.1	32.2	34.7	38.8	48.9	59.7	69.1	72.4	69.1	62.3	48.7	38.4	31.3	29.5
75	18.1	19.0	17.8	16.1	14.6	14.5	14.6	15.1	15.7	18.9	23.6	28.9	30.8	28.6	24.9	18.6	15.6	14.4	14.2
80	9.63	9.76	9.25	8.95	8.39	8.35	8.22	8.66	9.07	10.1	10.8	11.7	12.0	11.7	11.0	9.86	8.97	8.11	7.78
85	3.75	3.72	2.88	2.36	1.81	1.80	1.69	2.01	2.27	3.27	4.17	5.42	6.03	5.60	4.64	3.28	2.31	1.51	1.28
90	0.27	0.28	0.25	0.21	0.18	0.15	0.15	0.15	0.18	0.21	0.25	0.28	0.39	0.27	0.26	0.21	0.14	0.12	0.11
95	0.44	0.45	0.41	0.39	0.37	0.32	0.32	0.32	0.34	0.35	0.37	0.38	0.30	0.30	0.28	0.27	0.25	0.23	0.22
100	0.67	0.64	0.61	0.59	0.57	0.54	0.54	0.53	0.56	0.57	0.60	0.59	0.49	0.48	0.43	0.42	0.41	0.39	0.38
105	0.88	0.85	0.84	0.82	0.82	0.80	0.78	0.78	0.81	0.82	0.81	0.80	0.69	0.68	0.63	0.63	0.61	0.61	0.61
110	1.09	1.09	1.05	1.04	1.05	1.03	1.03	1.03	1.05	1.04	1.03	1.01	0.90	0.92	0.86	0.86	0.86	0.86	0.88
115	1.33	1.31	1.28	1.26	1.26	1.26	1.26	1.26	1.28	1.25	1.25	1.22	1.11	1.13	1.10	1.10	1.10	1.13	1.15
120	1.57	1.53	1.51	1.49	1.49	1.48	1.48	1.47	1.48	1.47	1.47	1.45	1.35	1.35	1.33	1.35	1.35	1.37	1.40
125	1.79	1.77	1.74	1.71	1.72	1.71	1.71	1.70	1.70	1.70	1.70	1.68	1.57	1.59	1.56	1.57	1.59	1.62	1.63
130	1.99	1.97	1.93	1.92	1.92	1.92	1.92	1.91	1.91	1.89	1.91	1.89	1.79	1.79	1.76	1.77	1.82	1.83	1.85
135	2.16	2.14	2.11	2.03	2.12	2.11	2.12	2.10	2.09	1.93	2.05	2.07	1.97	1.98	1.94	1.87	2.01	2.02	2.05
140	2.32	2.29	2.24	2.21	2.17	2.27	2.28	2.26	2.27	2.13	2.15	2.22	2.12	2.13	2.06	2.06	2.16	2.18	2.21
145	2.44	2.42	2.40	2.38	2.38	2.34	2.33	2.30	2.43	2.30	2.32	2.32	2.25	2.24	2.22	2.23	2.32	2.34	2.38
150	2.60	2.58	2.57	2.55	2.53	2.52	2.52	2.48	2.48	2.48	2.53	2.51	2.45	2.42	2.40	2.44	2.42	2.40	2.48
155	2.75	2.73	2.72	2.70	2.69	2.69	2.68	2.68	2.66	2.66	2.68	2.68	2.61	2.59	2.59	2.62	2.59	2.62	2.63
160	2.89	2.86	2.92	2.89	2.85	2.88	2.93	2.86	2.81	2.86	2.89	2.86	2.75	2.79	2.78	2.81	2.77	2.81	2.87
165	3.02	3.01	3.03	3.01	2.99	3.02	3.05	2.99	2.95	2.98	3.00	2.99	2.92	2.93	2.94	2.96	2.94	2.93	3.03
170	3.13	3.10	3.11	3.12	3.12	3.11	3.09	3.07	3.09	3.09	3.11	3.10	3.04	3.06	3.05	3.05	3.04	3.05	3.05
175	3.21	3.19	3.20	3.21	3.21	3.19	3.19	3.17	3.17	3.22	3.22	3.21	3.16	3.16	3.17	3.19	3.15	3.16	3.15
180	3.23	3.23	3.24	3.27	3.26	3.23	3.23	3.24	3.25	3.27	3.25	3.25	3.23	3.24	3.25	3.27	3.25	3.25	3.24

C Range: 0 - 360DEG
 C Interval: 15.0DEG
 Test Speed: HIGH
 Temperature:25.3DEG
 Operators:
 Test Date:2022-03-01

g Range: 0 - 180DEG
 g Interval: 5.0DEG
 Test System:EVERFINE GO-2000B_V1 SYSTEM V2.00.426
 Humidity:65.0%
 Test Distance:8.000m [K=1.0125]
 Remarks:

LUMINOUS DISTRIBUTION INTENSITY DATA

Test:U:120.10V I:0.0937A P:9.2917W PF:0.8253 Freq:59.98Hz Lamp Flux:701.643x1 lm		
NAME: LED DOWNLIGHT	TYPE:	WEIGHT:
SPEC.:	DIM.:	SERIAL No.:
MFR.: ASD LIGHTING CORP	SUR.:	Shielding Angle:

Table--2

UNIT: cd/klm

C(DEG) g (DEG)	285	300	315	330	345														
0	408	408	408	408	408														
5	406	406	405	406	405														
10	399	400	399	399	399														
15	390	391	389	390	389														
20	376	378	376	378	376														
25	359	360	359	361	359														
30	336	339	337	340	339														
35	310	313	312	316	315														
40	280	283	283	288	287														
45	245	249	250	256	256														
50	205	210	213	220	221														
55	162	167	173	180	183														
60	114	120	127	136	140														
65	65.7	71.2	78.7	89.5	94.6														
70	28.7	31.5	36.5	45.3	50.0														
75	13.8	14.0	14.6	16.9	18.2														
80	7.52	7.89	8.15	8.95	9.42														
85	1.07	1.37	1.71	2.62	3.36														
90	0.12	0.14	0.18	0.20	0.21														
95	0.24	0.26	0.30	0.32	0.36														
100	0.41	0.45	0.52	0.55	0.59														
105	0.65	0.70	0.78	0.80	0.81														
110	0.93	0.97	1.04	1.05	1.03														
115	1.20	1.24	1.26	1.26	1.25														
120	1.43	1.46	1.48	1.49	1.47														
125	1.67	1.68	1.70	1.70	1.69														
130	1.88	1.89	1.90	1.91	1.89														
135	2.07	2.08	2.00	1.97	2.08														
140	2.24	2.24	2.12	2.15	2.23														
145	2.40	2.40	2.30	2.32	2.33														
150	2.44	2.45	2.49	2.49	2.50														
155	2.67	2.65	2.66	2.66	2.68														
160	2.87	2.82	2.87	2.89	2.84														
165	3.00	2.97	3.03	3.02	2.98														
170	3.08	3.09	3.10	3.10	3.10														
175	3.18	3.21	3.23	3.21	3.20														
180	3.24	3.24	3.27	3.27	3.25														

C Range: 0 - 360DEG
 C Interval: 15.0DEG
 Test Speed: HIGH
 Temperature:25.3DEG
 Operators:
 Test Date:2022-03-01

g Range: 0 - 180DEG
 g Interval: 5.0DEG
 Test System:EVERFINE GO-2000B_V1 SYSTEM V2.00.426
 Humidity:65.0%
 Test Distance:8.000m [K=1.0125]
 Remarks: