



LED SWIVEL HARDSCAPE LIGHT WITH RGBW

► **DESIGN** - LED SWIVEL HARDSCAPE LIGHT WITH RGBW has 12V low-voltage design ensuring its safety when used outdoors (transformer is not included). Swivel light head allows you to adjust the illumination angle from 0-90 degree. The PC lens with a 115° beam angle grants you even light distribution. HUB for group control via Wi-Fi is included.

► **RGBW** - The fixture has RGBW design with APP control. You can easily select Red, Green, Blue, White (2,700K-6,500K) colors or its' combinations, having 16.7 million colors in total. You can also choose lighting patterns and set up a schedule, having a great variety of good looking effects. All of it is easily controlled by Smart APP on your Smartphone. The fixture is also compatible with Alexa and Google Assistant.

► **CUTTABLE DESIGN** - Mounting plate's width can be adjusted by cutting it along the dotted line according to your needs.

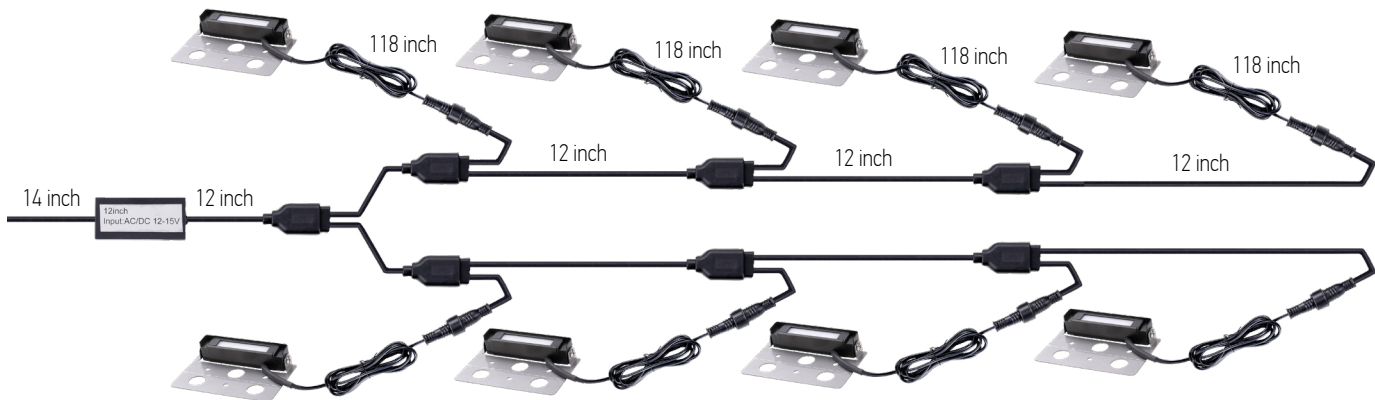
► **APPLICATION** - This fixture is rated for Wet Locations. It is perfect for mounting between hardscapes like retaining walls, barbecue fire pits, bricks, landscape steps, masonry walls, etc.

► **ADVANTAGES** - With a lifespan of 50,000 hours, these fixtures are made to last decades under normal operation! ASD provides a 5-year limited warranty along with ETL certification to guarantee top quality products and safety!

Catalog number	
Notes	
Type	



Model	Size	Watts	Voltage	Dimmable	Lumens	CCT	Finish	Dimensions (LxWxH)
ASD-HSL4-2SM-RGBW-BR-8P	4 inch	1.5W	12 V	-	50 lm	Red-Green-Blue-2,700K-6,500 K	Bronze	4-1/2" x 2-15/16" x 1"
ASD-HSL7-3SM-RGBW-BR-8P	7 inch	3W	12 V	-	107 lm	Red-Green-Blue-2,700K-6,500 K	Bronze	6-15/16" x 2-15/16" x 1"
ASD-HSL12-5SM-RGBW-BR-8P	12 inch	5W	12 V	-	159 lm	Red-Green-Blue-2,700K-6,500 K	Bronze	12-7/16" x 2-15/16" x 1"



For most up-to-date spec sheets please refer to asd-lighting.com

ASD LIGHTING CORP

E-mail: orders@asd-lighting.com | Web site: www.asd-lighting.com





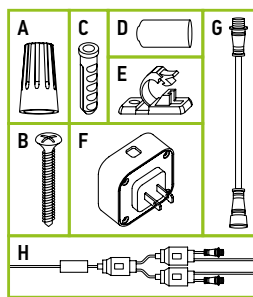
LED SWIVEL HARDSCAPE LIGHT WITH RGBW

PRODUCT SPECIFICATIONS:

Construction & Materials			Optical system		
Housing	Aluminum		Luminous flux	ASD-HSLS-4N2BR-4P	50 lm
Lens	Acrylic			ASD-HSLS-7N5BR-4P	107 lm
Finish	Bronze			ASD-HSLS-12N5BR-2P	159 lm
Weight	ASD-HSLS-4N2BR-4P	5.3 lbs (2.4 kg)	Color temperature	from Red-Green-Blue-2,700K-6,500 K with smart app	
	ASD-HSLS-7N5BR-4P	6.4 lbs (2.9 kg)		CRI	> 80
	ASD-HSLS-12N5BR-2P	7.3 lbs (3.3 kg)			
Environmental system			Electrical system		
Work environment	Suitable for Wet Locations		Input voltage	12 V	
Operating temperature	-40°F to 113°F (-40°C to 45°C)		Max input current	ASD-HSLS-4N2BR-4P	0.87 A
L-70 Life	R > 50,000 hrs			ASD-HSLS-7N5BR-4P	1.67 A
				ASD-HSLS-12N5BR-2P	0.15 A
			Inrush current (Action time)	ASD-HSLS-4N2BR-4P	0.25 A (20 S)
			Off state power	0W	
			Power consumption	ASD-HSLS-4N2BR-4P	1.5W
				ASD-HSLS-7N5BR-4P	3W
				ASD-HSLS-12N5BR-2P	5W
			Power factor	> 0.9	
			Output voltage	ASD-HSLS-4N2BR-4P	12 V
				ASD-HSLS-7N5BR-4P	21 V
				ASD-HSLS-12N5BR-2P	36 V
			Max output current	ASD-HSLS-4N2BR-4P	0.87 A
				ASD-HSLS-7N5BR-4P	1.67 A
				ASD-HSLS-12N5BR-2P	3 A

PACKAGE CONTENTS:

Description	Q-ty
LED Swivel Hardscape Light with RGBW	8
Wire nut (A)	4
Self-taping screw (B)	16 (24 for 12 inch)
Anchor (C)	16 (24 for 12 inch)
Rubber cap (D)	8
Cable clamp (E)	16
Smart hup (F)	1
Extension cord (G)	2
Bluetooth controller (H)	1
Box	1



Regular and voluntary certifications		
5-year limited warranty		
cETLus certified		

For most up-to-date spec sheets please refer to asd-lighting.com



LED SWIVEL HARDSCAPE LIGHT WITH RGBW

INSTALLATION GUIDE

IMPORTANT SAFETY INFORMATION:

Please read all the instructions below before installation.

- ▶ Make sure that the supply voltage corresponds to the rated product voltage.
- ▶ The product must be installed by a qualified electrician in accordance with the National Electrical Code and corresponding local codes.
- ▶ If the product is damaged, do not use it.

⚠ WARNING

RISK OF PERSONAL INJURY – READ and follow all WARNINGS and installation instructions. Keep or give to the owner for future reference.

Risk of cuts: Wear gloves to prevent cuts or abrasions when removing from carton, handling, installing, and maintaining this product.

Risk of electric shock: This product must be installed in accordance with the applicable installation code by a person familiar with the construction and operation of the product and the hazards involved.

Risk of Fire: Minimum 194°F supply conductors. Consult a qualified electrician to ensure correct branch circuit conductor.

ASD® assumes no responsibility for claims arising out of improper or careless installation or handling of this product.

ASD SMART APP DOWNLOAD:

Android

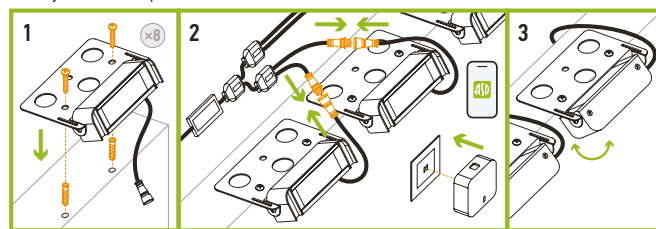


iOS



INSTALLATION STEPS:

1. Drill holes and insert plastic anchors. Align the fixture's mounting bracket holes with plastic anchors. Secure the fixture by screwing screws into the plastic anchors.
2. Connect the 12V transformer to 12V grid. Connect the fixture's wire to transformer wires. Plug the Smart Hub to 120V grid. Download "ASD SMART" application from App Store or Google Play. Connect the fixtures to "ASD SMART" application and set desired parameters.
3. Adjust the lamp head as needed.



* please see manual by [link](#) or QR-code below

Adding the fixture to ASD SMART APP:

1. Download ASD SMART APP
2. Tap "+" in the upper-right hand corner.
3. Select "Add a device" section.
4. Follow APP instructions.
5. The fixture must be found by the APP and appear on the screen.
7. Adding ASD Hardscape RGBW is complete.



ORDERING INFORMATION

Model	UPC	Pcs. per carton	Carton size	Carton weight	GTIN 14
ASD-HSLS4-2SM-RGBW-BR-8P	810128114578	2	12.4" x 11" x 9.1"	12.8 lbs	10810128114575
ASD-HSLS7-3SM-RGBW-BR-8P	810128114585	2	12.4" x 11" x 9.1"	15 lbs	10810128114582
ASD-HSLS12-5SM-RGBW-BR-8P	810128114592	1	14.2" x 5.9" x 8.3"	8.1 lbs	-

For most up-to-date spec sheets please refer to asd-lighting.com