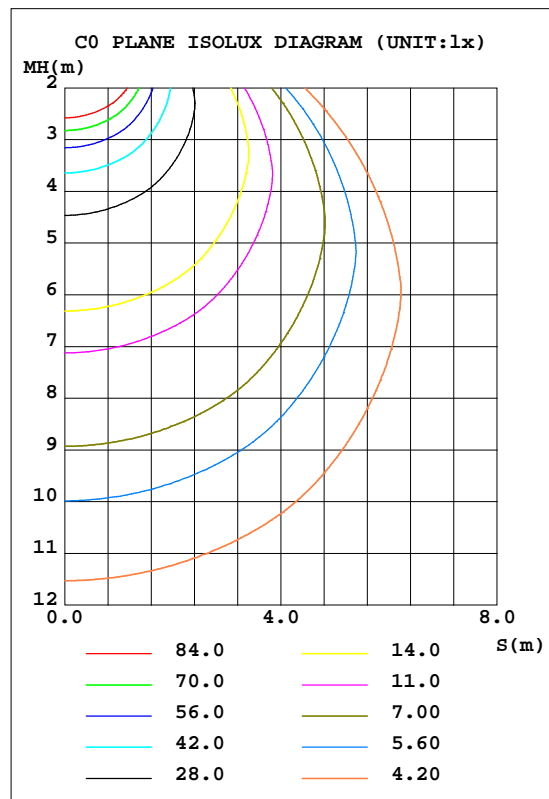
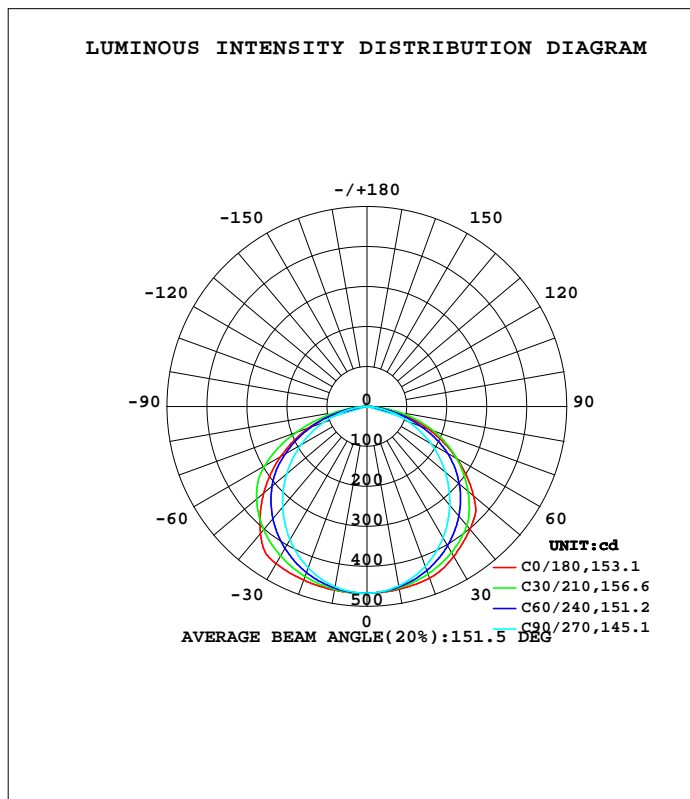


LUMINAIRE PHOTOMETRIC TEST REPORT

Test:U:120.09V I:0.1735A P:19.391W PF:0.9305 Freq:59.98Hz Lamp Flux:1479.92x1 lm		
NAME: ASD-UCL-40D20CC-2700K	TYPE:	WEIGHT:
SPEC.:20W	DIM.:	SERIAL No.:
MFR.: ASD Lighting Corp	SUR.:	Shielding Angle:

DATA OF LAMP		PHOTOMETRIC DATA Eff: 76.32 lm/W			
MODELASD-UCL-40D20CC-2700K		Imax(cd)	467.7	S/MH(C0/180)	1.45
NOMINAL POWER(W)	20	LOR(%)	100.0	S/MH(C90/270)	1.23
RATED VOLTAGE(V)	120	TOTAL FLUX(lm)	1479.9	h UP, DN(C0-180)	0.3,49.2
NOMINAL FLUX(lm)	1479.92	CIE CLASS	DIRECT	h UP, DN(C180-360)	0.2,50.3
LAMPS INSIDE	1	h up(%)	0.5	CIBSE SHR NOM	1.50
TEST VOLTAGE(V)	120	h down(%)	99.5	CIBSE SHR MAX	1.55



C Range: 0 - 360DEG
 C Interval: 15.0DEG
 Test Speed: MEDIUM
 Temperature:25.3DEG
 Operators:
 Test Date:11 March 2021

g Range: 0 - 180DEG
 g Interval: 0.5DEG
 Test System:EVERFINE GO-SPEX500_V1 SYSTEM V2.0.402
 Humidity:65.0%
 Test Distance:3.010m [K=1.1628]
 Remarks:

ZONAL FLUX DIAGRAM

ZONAL FLUX DIAGRAM:

g	C0	C45	C90	C135	C180	C225	C270	C315	g	F zone	F total	%lum,lamp
10	464.5	459.6	455.9	460.2	466.2	462.4	457.7	461.7	0- 10	44.31	44.31	2.99,2.99
20	457.0	440.7	425.8	441.4	462.1	446.5	429.7	444.4	10- 20	128.2	172.5	11.7,11.7
30	433.3	412.4	379.8	411.8	453.9	419.6	385.4	416.3	20- 30	198.6	371.1	25.1,25.1
40	400.9	373.7	322.4	371.7	414.7	382.0	328.3	377.1	30- 40	247.5	618.6	41.8,41.8
50	348.2	323.0	256.1	320.5	337.3	332.3	262.9	326.3	40- 50	267.3	885.8	59.9,59.9
60	259.2	250.2	183.9	255.0	248.6	266.8	190.0	259.7	50- 60	251.5	1137	76.9,76.9
70	161.1	162.1	109.8	166.1	152.8	177.9	114.2	164.4	60- 70	196.5	1334	90.1,90.1
80	66.55	66.60	38.45	65.75	60.18	72.92	43.78	65.93	70- 80	111.4	1445	97.7,97.7
90	1.226	1.368	0.4389	1.213	0.3525	1.206	0.5672	1.241	80- 90	26.53	1472	99.5,99.5
100	0.8313	1.001	0.8169	1.006	0.6235	0.7713	0.5815	0.8037	90-100	0.7655	1473	99.5,99.5
110	1.154	1.490	1.332	1.506	0.9405	1.116	0.9197	1.094	100-110	1.050	1474	99.6,99.6
120	1.432	1.821	1.675	1.850	1.163	1.410	1.170	1.347	110-120	1.325	1475	99.7,99.7
130	1.482	1.971	1.911	1.959	1.170	1.549	1.385	1.557	120-130	1.392	1476	99.8,99.8
140	1.414	2.091	1.950	2.049	1.099	1.656	1.564	1.635	130-140	1.271	1478	99.8,99.8
150	1.348	2.189	2.016	2.120	1.003	1.388	1.689	1.474	140-150	1.040	1479	99.9,99.9
160	1.304	1.915	1.987	1.808	0.9196	1.357	1.280	1.390	150-160	0.7343	1479	100,100
170	1.242	1.843	1.549	1.646	1.003	1.454	1.348	1.482	160-170	0.4124	1480	100,100
180	1.192	1.686	1.501	1.652	1.195	1.686	1.499	1.654	170-180	0.1386	1480	100,100
DEG	LUMINOUS INTENSITY:cd								UNIT:lm			

C Range: 0 - 360DEG
 C Interval: 15.0DEG
 Test Speed: MEDIUM
 Temperature:25.3DEG
 Operators:
 Test Date:11 March 2021

g Range: 0 - 180DEG
 g Interval: 0.5DEG
 Test System:EVERFINE GO-SPEX500_V1 SYSTEM V2.0.402
 Humidity:65.0%
 Test Distance:3.010m [K=1.1628]
 Remarks:

UGR(Unified Glare Rating) Table

Test:U:120.09V I:0.1735A P:19.391W PF:0.9305 Freq:59.98Hz Lamp Flux:1479.92x1 lm										
NAME: ASD-UCL-40D20CC-2700K					TYPE:			WEIGHT:		
SPEC.:20W					DIM.:			SERIAL No.:		
MFR.: ASD Lighting Corp					SUR.:			Shielding Angle:		
ceiling/cavity	0.7	0.7	0.5	0.5	0.3	0.7	0.7	0.5	0.5	0.3
walls	0.5	0.3	0.5	0.3	0.3	0.5	0.3	0.5	0.3	0.3
working plane	0.2	0.2	0.2	0.2	0.2	0.2	0.2	0.2	0.2	0.2
Room dimensions	Viewed crosswise					Viewed endwise				
x = 2H y = 2H	13.9	15.4	14.1	15.6	15.8	11.8	13.4	12.1	13.6	13.8
3H	15.7	17.2	16.0	17.4	17.7	13.2	14.6	13.5	14.9	15.1
4H	16.4	17.8	16.8	18.1	18.3	13.7	15.0	14.0	15.3	15.6
6H	16.9	18.2	17.2	18.5	18.8	13.9	15.2	14.3	15.5	15.8
8H	17.0	18.3	17.4	18.6	18.9	14.0	15.2	14.3	15.5	15.8
12H	17.1	18.3	17.5	18.6	18.9	14.0	15.2	14.3	15.5	15.8
4H 2H	14.3	15.6	14.6	15.9	16.2	12.7	14.1	13.0	14.3	14.6
3H	16.3	17.5	16.7	17.8	18.1	14.2	15.4	14.6	15.7	16.0
4H	17.2	18.3	17.6	18.6	18.9	14.8	15.9	15.2	16.2	16.6
6H	17.8	18.8	18.2	19.1	19.5	15.2	16.1	15.6	16.5	16.9
8H	18.0	18.9	18.4	19.3	19.7	15.3	16.2	15.7	16.5	16.9
12H	18.2	19.0	18.6	19.4	19.8	15.3	16.1	15.7	16.5	16.9
8H 4H	17.3	18.2	17.8	18.6	19.0	15.3	16.2	15.7	16.5	16.9
6H	18.1	18.9	18.6	19.3	19.7	15.8	16.5	16.2	16.9	17.4
8H	18.4	19.1	18.9	19.5	20.0	15.9	16.6	16.4	17.0	17.5
12H	18.6	19.2	19.1	19.7	20.2	15.9	16.5	16.4	17.0	17.5
12H 4H	17.3	18.1	17.8	18.5	19.0	15.3	16.1	15.7	16.5	16.9
6H	18.1	18.8	18.6	19.2	19.7	15.9	16.5	16.3	17.0	17.4
8H	18.5	19.0	19.0	19.5	20.0	16.0	16.6	16.5	17.1	17.5
Variations with the observer position at spacings:										
S = 1.0H	+ 0.1 / - 0.2					+ 0.1 / - 0.2				
1.5H	+ 0.1 / - 0.2					+ 0.2 / - 0.4				
2.0H	+ 0.3 / - 0.4					+ 0.2 / - 0.5				

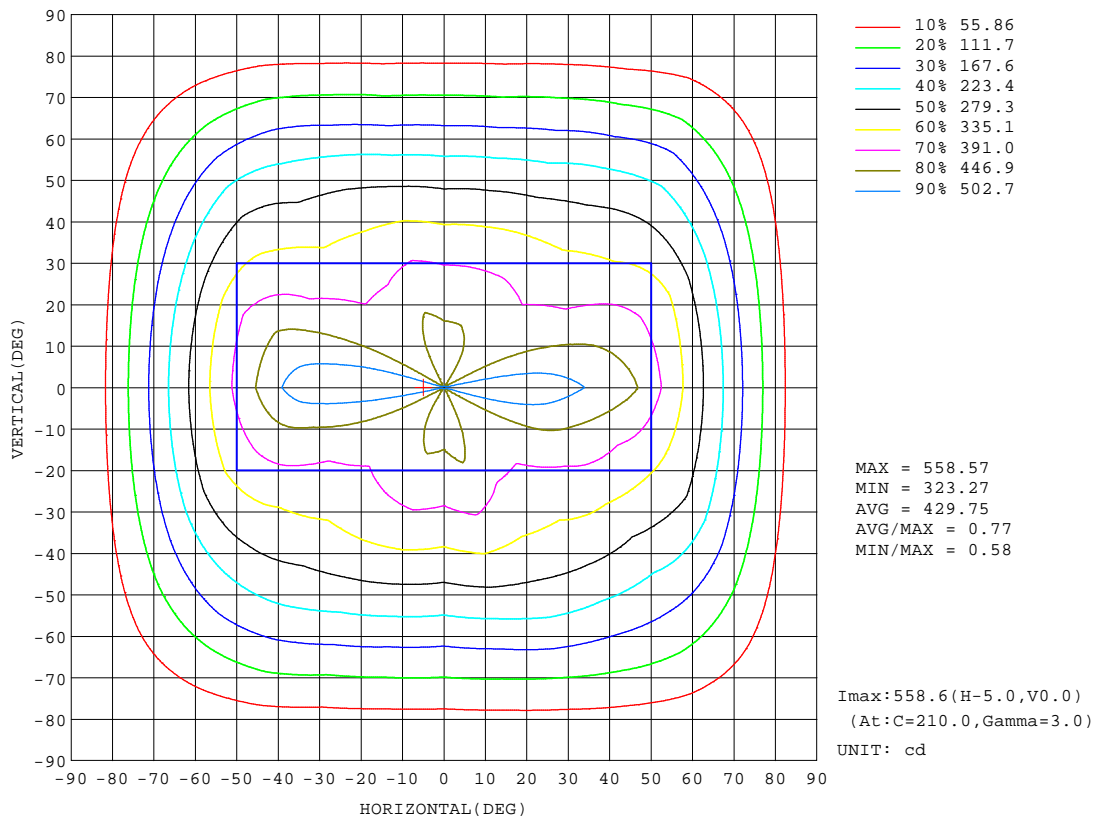
CIE Pub.117, 1480 lm Total Lamp Luminous Flux Corrected (8log(F/F0) = 1.4)

C Range: 0 - 360DEG
 C Interval: 15.0DEG
 Test Speed: MEDIUM
 Temperature:25.3DEG
 Operators:
 Test Date:11 March 2021

g Range: 0 - 180DEG
 g Interval: 0.5DEG
 Test System:EVERFINE GO-SPEX500_V1 SYSTEM V2.0.402
 Humidity:65.0%
 Test Distance:3.010m [K=1.1628]
 Remarks:

ISOCANDELA DIAGRAM

Test:U:120.09V I:0.1735A P:19.391W PF:0.9305 Freq:59.98Hz Lamp Flux:1479.92x1 lm		
NAME: ASD-UCL-40D20CC-2700K	TYPE:	WEIGHT:
SPEC.:20W	DIM.:	SERIAL No.:
MFR.: ASD Lighting Corp	SUR.:	Shielding Angle:



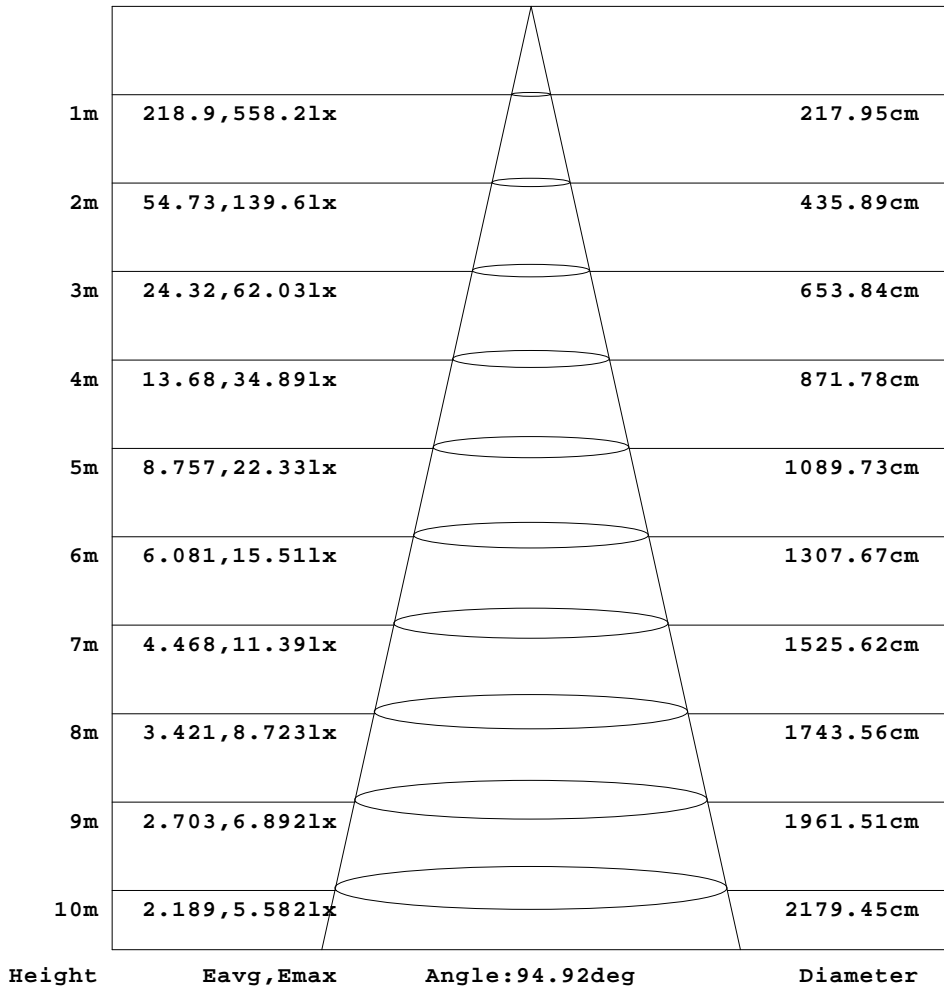
C Range: 0 - 360DEG
 C Interval: 15.0DEG
 Test Speed: MEDIUM
 Temperature:25.3DEG
 Operators:
 Test Date:11 March 2021

g Range: 0 - 180DEG
 g Interval: 0.5DEG
 Test System:EVERFINE GO-SPEX500_V1 SYSTEM V2.0.402
 Humidity:65.0%
 Test Distance:3.010m [K=1.1628]
 Remarks:

AAI Figure

Test:U:120.09V I:0.1735A P:19.391W PF:0.9305 Freq:59.98Hz Lamp Flux:1479.92x1 lm		
NAME: ASD-UCL-40D20CC-2700K	TYPE:	WEIGHT:
SPEC.:20W	DIM.:	SERIAL No.:
MFR.: ASD Lighting Corp	SUR.:	Shielding Angle:

Flux out:819.1 lm



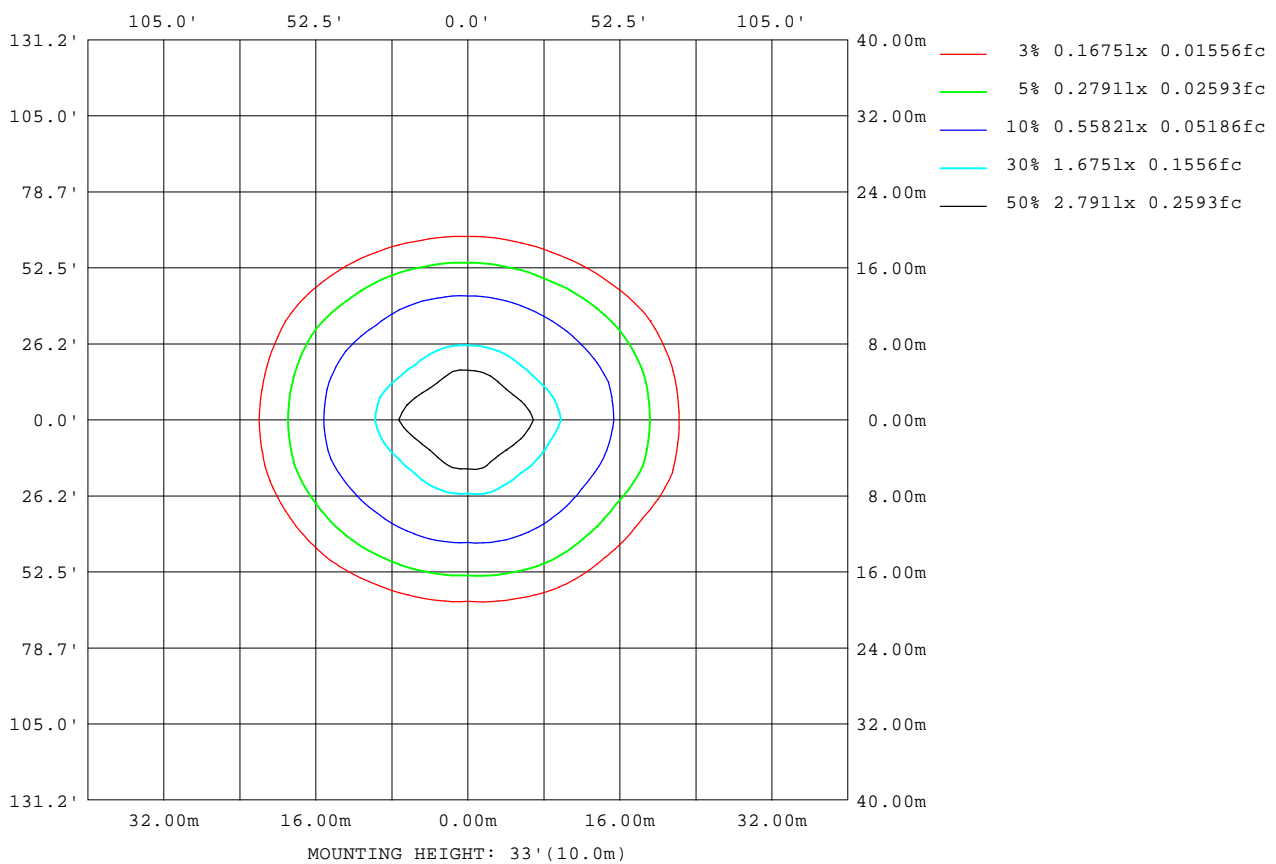
Note:The Curves indicate the illuminated area and the average illumination when the luminaire is at different distance.

C Range: 0 - 360DEG
 C Interval: 15.0DEG
 Test Speed: MEDIUM
 Temperature:25.3DEG
 Operators:
 Test Date:11 March 2021

g Range: 0 - 180DEG
 g Interval: 0.5DEG
 Test System:EVERFINE GO-SPEX500_V1 SYSTEM V2.0.402
 Humidity:65.0%
 Test Distance:3.010m [K=1.1628]
 Remarks:

ISOLUX DIAGRAM

Test:U:120.09V I:0.1735A P:19.391W PF:0.9305 Freq:59.98Hz Lamp Flux:1479.92x1 lm		
NAME: ASD-UCL-40D20CC-2700K	TYPE:	WEIGHT:
SPEC.:20W	DIM.:	SERIAL No.:
MFR.: ASD Lighting Corp	SUR.:	Shielding Angle:



C Range: 0 - 360DEG
 C Interval: 15.0DEG
 Test Speed: MEDIUM
 Temperature:25.3DEG
 Operators:
 Test Date:11 March 2021

g Range: 0 - 180DEG
 g Interval: 0.5DEG
 Test System:EVERFINE GO-SPEX500_V1 SYSTEM V2.0.402
 Humidity:65.0%
 Test Distance:3.010m [K=1.1628]
 Remarks:

LED Avg.L Report

Test:U:120.09V I:0.1735A P:19.391W PF:0.9305 Freq:59.98Hz Lamp Flux:1479.92x1 lm		
NAME: ASD-UCL-40D20CC-2700K	TYPE:	WEIGHT:
SPEC.:20W	DIM.:	SERIAL No.:
MFR.: ASD Lighting Corp	SUR.:	Shielding Angle:

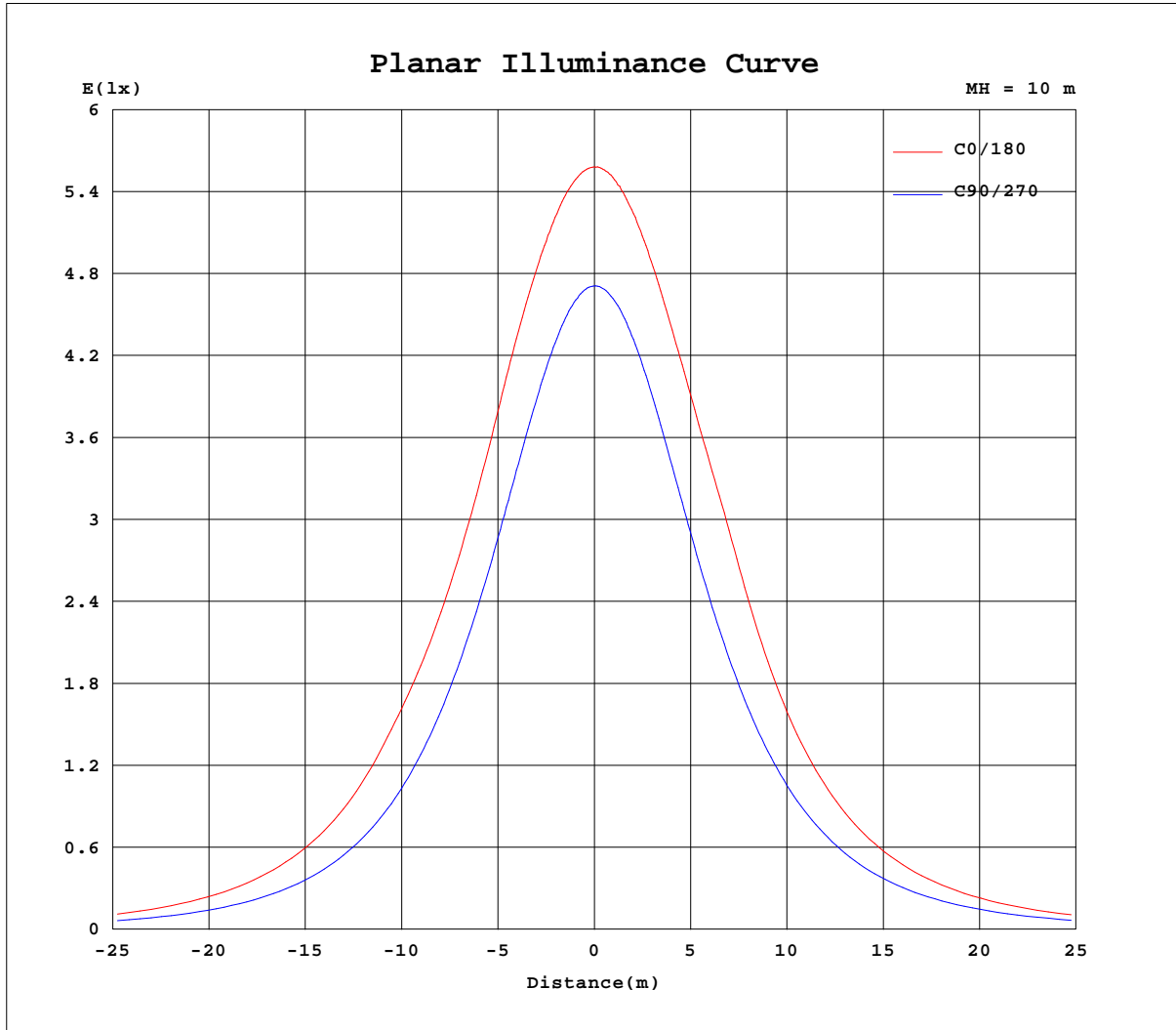
AvgL	cd/m2
L_0~180(65)av	975
L_0~180(75)av	835
L_0~180(85)av	585
L_90~270(65)av	706
L_90~270(75)av	585
L_90~270(85)av	291
L_45(65)av	1020
L_45(75)av	909
L_45(85)av	540

Standard: GB/T 29293-2012

C Range: 0 - 360DEG
 C Interval: 15.0DEG
 Test Speed: MEDIUM
 Temperature:25.3DEG
 Operators:
 Test Date:11 March 2021

g Range: 0 - 180DEG
 g Interval: 0.5DEG
 Test System:EVERFINE GO-SPEX500_V1 SYSTEM V2.0.402
 Humidity:65.0%
 Test Distance:3.010m [K=1.1628]
 Remarks:

Planar Illuminance Curve



C Range: 0 - 360DEG
 C Interval: 15.0DEG
 Test Speed: MEDIUM
 Temperature: 25.3DEG
 Operators:
 Test Date: 11 March 2021

g Range: 0 - 180DEG
 g Interval: 0.5DEG
 Test System: EVERFINE GO-SPEX500_V1 SYSTEM V2.0.402
 Humidity: 65.0%
 Test Distance: 3.010m [K=1.1628]
 Remarks:

LUMINOUS DISTRIBUTION INTENSITY DATA

Test:U:120.09V I:0.1735A P:19.391W PF:0.9305 Freq:59.98Hz Lamp Flux:1479.92x1 lm		
NAME: ASD-UCL-40D20CC-2700K	TYPE:	WEIGHT:
SPEC.:20W	DIM.:	SERIAL No.:
MFR.: ASD Lighting Corp	SUR.:	Shielding Angle:

Table--1

UNIT: cd

C(DEG) g (DEG)	0	15	30	45	60	75	90	105	120	135	150	165	180	195	210	225	240	255	270
0	467	467	467	467	467	467	467	467	467	467	467	467	467	467	467	467	467	467	467
5	466	465	465	465	465	465	464	465	465	465	466	466	467	467	467	466	466	465	465
10	465	462	461	460	459	458	456	459	459	460	461	462	466	466	465	462	461	458	458
15	461	457	455	452	449	447	443	448	450	452	455	458	465	463	460	456	453	447	446
20	457	450	446	441	437	432	426	432	437	441	446	452	462	458	453	447	442	431	430
25	448	439	435	428	421	413	404	413	421	428	435	444	459	452	443	435	428	412	409
30	433	422	422	412	403	390	380	390	402	412	422	434	454	444	432	420	410	389	385
35	418	401	407	394	382	363	352	363	380	393	406	422	445	435	418	403	390	363	358
40	401	378	389	374	358	334	322	334	354	372	389	409	415	422	402	382	366	334	328
45	383	354	362	350	331	301	290	301	324	348	368	387	377	397	383	359	340	303	296
50	348	329	330	323	302	266	256	266	291	320	344	356	337	366	361	332	310	269	263
55	305	302	296	290	269	230	221	230	255	290	315	323	294	322	334	302	277	232	227
60	259	272	258	250	232	193	184	192	217	255	276	280	249	271	295	267	236	194	190
65	211	231	219	207	189	154	146	154	176	214	230	227	201	219	245	227	192	155	152
70	161	177	175	162	142	116	110	115	132	166	181	171	153	165	187	178	147	115	114
75	112	123	129	116	97.3	78.3	73.7	77.3	90.1	117	123	117	105	113	128	124	101	79.1	77.6
80	66.5	72.9	77.5	66.6	53.4	41.9	38.5	40.7	48.1	65.7	70.5	67.4	60.2	65.2	73.5	72.9	57.2	44.4	43.8
85	27.4	30.4	28.6	22.6	15.8	11.9	10.1	11.0	13.0	20.0	23.5	25.9	23.5	24.6	28.4	26.3	20.4	15.1	15.3
90	1.23	0.98	1.47	1.37	0.95	0.41	0.44	0.62	0.93	1.21	1.22	0.84	0.35	1.03	1.13	1.21	1.03	0.74	0.57
95	0.71	0.70	0.76	0.74	0.67	0.58	0.58	0.58	0.65	0.74	0.80	0.79	0.47	0.54	0.63	0.64	0.53	0.51	0.46
100	0.83	0.87	0.99	1.00	0.93	0.81	0.82	0.82	0.91	1.01	1.05	0.96	0.62	0.70	0.77	0.77	0.68	0.63	0.58
105	0.99	1.05	1.21	1.27	1.21	1.07	1.09	1.09	1.18	1.27	1.27	1.15	0.78	0.86	0.95	0.95	0.87	0.76	0.74
110	1.15	1.23	1.40	1.49	1.45	1.30	1.33	1.33	1.42	1.51	1.48	1.34	0.94	1.00	1.11	1.12	1.08	0.94	0.92
115	1.30	1.39	1.57	1.69	1.64	1.48	1.52	1.51	1.60	1.70	1.64	1.49	1.06	1.13	1.26	1.26	1.17	1.04	1.05
120	1.43	1.54	1.73	1.82	1.80	1.64	1.67	1.66	1.77	1.85	1.77	1.62	1.16	1.25	1.39	1.41	1.28	1.14	1.17
125	1.49	1.61	1.83	1.90	1.89	1.76	1.82	1.79	1.85	1.90	1.84	1.68	1.20	1.29	1.47	1.52	1.38	1.21	1.28
130	1.48	1.63	1.92	1.97	1.94	1.84	1.91	1.87	1.90	1.96	1.91	1.69	1.17	1.28	1.54	1.55	1.47	1.34	1.38
135	1.47	1.60	1.95	2.05	1.98	1.87	1.96	1.87	1.93	1.99	1.96	1.63	1.16	1.26	1.47	1.61	1.55	1.41	1.48
140	1.41	1.59	1.98	2.09	2.04	1.85	1.95	1.85	1.94	2.05	1.99	1.58	1.10	1.21	1.43	1.66	1.55	1.44	1.56
145	1.39	1.60	1.96	2.19	2.10	1.91	1.96	1.86	1.98	2.12	1.97	1.57	1.05	1.21	1.40	1.53	1.67	1.50	1.60
150	1.35	1.60	1.87	2.19	2.21	2.00	2.02	1.90	2.04	2.12	1.88	1.53	1.00	1.15	1.34	1.39	1.55	1.57	1.69
155	1.33	1.59	1.82	2.09	2.16	2.09	2.15	2.01	2.00	2.01	1.78	1.52	0.95	1.09	1.34	1.38	1.32	1.33	1.50
160	1.30	1.54	1.77	1.91	2.04	1.92	1.99	1.87	1.88	1.81	1.69	1.51	0.92	1.03	1.22	1.36	1.33	1.23	1.28
165	1.23	1.46	1.74	1.82	1.82	1.70	1.71	1.65	1.69	1.68	1.60	1.40	0.90	1.02	1.21	1.38	1.41	1.25	1.25
170	1.24	1.47	1.78	1.84	1.75	1.61	1.55	1.56	1.63	1.65	1.61	1.40	1.00	1.10	1.30	1.45	1.43	1.26	1.35
175	1.21	1.42	1.70	1.75	1.69	1.56	1.57	1.47	1.59	1.67	1.55	1.36	1.06	1.19	1.39	1.52	1.46	1.27	1.39
180	1.19	1.37	1.58	1.69	1.56	1.40	1.50	1.40	1.45	1.65	1.63	1.41	1.19	1.37	1.58	1.69	1.56	1.40	1.50

C Range: 0 - 360DEG

C Interval: 15.0DEG

Test Speed: MEDIUM

Temperature:25.3DEG

Operators:

Test Date:11 March 2021

g Range: 0 - 180DEG

g Interval: 0.5DEG

Test System:EVERFINE GO-SPEX500_V1 SYSTEM V2.0.402

Humidity:65.0%

Test Distance:3.010m [K=1.1628]

Remarks:

LUMINOUS DISTRIBUTION INTENSITY DATA

Test:U:120.09V I:0.1735A P:19.391W PF:0.9305 Freq:59.98Hz Lamp Flux:1479.92x1 lm		
NAME: ASD-UCL-40D20CC-2700K	TYPE:	WEIGHT:
SPEC.:20W	DIM.:	SERIAL No.:
MFR.: ASD Lighting Corp	SUR.:	Shielding Angle:

Table--2

UNIT: cd

C(DEG) g (DEG)	285	300	315	330	345														
0	467	467	467	467	467														
5	465	466	466	467	467														
10	457	461	462	463	464														
15	446	452	455	457	460														
20	429	441	444	450	454														
25	409	425	432	439	447														
30	386	405	416	427	439														
35	360	382	398	412	428														
40	331	354	377	395	416														
45	300	323	353	375	399														
50	267	290	326	352	372														
55	231	255	296	326	341														
60	193	216	260	291	294														
65	154	177	214	248	239														
70	116	136	164	199	183														
75	79.4	94.4	114	138	127														
80	44.9	54.5	65.9	81.5	75.4														
85	15.7	20.5	25.1	33.6	31.0														
90	0.66	1.00	1.24	1.37	1.28														
95	0.51	0.70	0.76	0.81	0.58														
100	0.54	0.69	0.80	0.79	0.68														
105	0.75	0.83	0.94	0.93	0.85														
110	0.93	0.98	1.09	1.08	1.00														
115	1.05	1.12	1.24	1.25	1.15														
120	1.16	1.23	1.35	1.40	1.31														
125	1.25	1.28	1.46	1.47	1.36														
130	1.38	1.41	1.56	1.58	1.39														
135	1.48	1.52	1.57	1.56	1.38														
140	1.54	1.52	1.64	1.49	1.38														
145	1.58	1.61	1.64	1.46	1.35														
150	1.68	1.60	1.47	1.44	1.30														
155	1.42	1.38	1.42	1.45	1.27														
160	1.28	1.37	1.39	1.40	1.25														
165	1.33	1.40	1.45	1.38	1.22														
170	1.40	1.41	1.48	1.48	1.32														
175	1.35	1.37	1.48	1.57	1.41														
180	1.39	1.46	1.65	1.63	1.42														

C Range: 0 - 360DEG
 C Interval: 15.0DEG
 Test Speed: MEDIUM
 Temperature:25.3DEG
 Operators:
 Test Date:11 March 2021

g Range: 0 - 180DEG
 g Interval: 0.5DEG
 Test System:EVERFINE GO-SPEX500_V1 SYSTEM V2.0.402
 Humidity:65.0%
 Test Distance:3.010m [K=1.1628]
 Remarks: