



# LED RECESSED MINI PANEL

► **DESIGN & OPTIONS** - LED RECESSED MINI PANEL has a low-profile, classic design that gives it a sleek look with efficient lighting. It features smooth dimming capabilities ranging from 10% to 100% with modern LED dimmers while the 110° beam angle will leave no dark spots on the floor surface. It is also CCT selectable, letting you set it to 2,700K, 3,000K, 3,500K, 4,000K or 5,000K with a simple switch. Comes with a CR190+ in 3", 4", 6", 8", 12" sizes and a WHITE, BRUSHED NICKEL, OIL RUBBED BRONZE or BLACK finish.

Models JBR-GB with 355° of horizontal rotation and up to 25° of vertical rotation are perfect for sloped ceilings and directional lighting.

► **INSTALLATION** - This fixture has a J-box and requires only 2" of ceiling space, making the installation process quick and easy. It has everything you need in one set. Just cut out the template, connect the J-box wiring to your light switch, and place it into your ceiling. Spring-loaded clips ensure a snug fit to the surface. This fixture is IC rated so there is no can or any other housing required. Refer to install instructions for detailed steps.

► **APPLICATION** - Install the fixture to your ceiling for bright light in your family room, bedroom, hallway, corridor, or any other common area in your living space. It is suitable for Wet Locations, making it perfect for spaces with humidity requirements. It can also be used as a complimentary light to an existing ceiling light.

► **ENERGY SAVINGS & EFFICIENCY** - With a lifespan of 54,000 hours, these fixtures are made to last decades under normal operation! This fixture can cut your electric bill by up to 80% instantly and will save you a significant amount of money in its lifetime.

► **CERTIFICATION & WARRANTY** - Buy with confidence: ASD provides a 5-year limited warranty along with UL certification to guarantee top quality products and safety!

Energy Star classification allows participation in rebates; please check the rebate programs available in your state.

Catalog number	
Notes	
Type	



Finish:	White	Bronze
	Steel	Black

Model	Size	Watts	Voltage	Dimmable	Lumens	CCT	Finish	Dimensions	Type
<b>JBR ROUND</b>									
ASD-JBR-3D6AC-WH-6PACK	3 inch	6W	120 V	TRIAC	420/445/460/455/436 lm	5CCT (2,700/3,000/3,500/4,000/5,000 K)	White	3-1/4" x 5/8"	Round
ASD-JBR-3D6AC-NK-6PACK	3 inch	6W	120 V	TRIAC	420/445/460/455/436 lm	5CCT (2,700/3,000/3,500/4,000/5,000 K)	Brushed nickel	3-1/4" x 5/8"	Round
ASD-JBR-3D6AC-BZ-6PACK	3 inch	6W	120 V	TRIAC	420/445/460/455/436 lm	5CCT (2,700/3,000/3,500/4,000/5,000 K)	Bronze	3-1/4" x 5/8"	Round
ASD-JBR-3D6AC-BK-6PACK	3 inch	6W	120 V	TRIAC	420/445/460/455/436 lm	5CCT (2,700/3,000/3,500/4,000/5,000 K)	Black	3-1/4" x 5/8"	Round
ASD-JBR-4D12AC-WH-6PACK	4 inch	12W	120 V	TRIAC	780/839/893/861/860 lm	5CCT (2,700/3,000/3,500/4,000/5,000 K)	White	4-11/16" x 5/8"	Round
ASD-JBR-4D12AC-WH-12PACK	4 inch	12W	120 V	TRIAC	780/839/893/861/860 lm	5CCT (2,700/3,000/3,500/4,000/5,000 K)	White	4-11/16" x 5/8"	Round
ASD-JBR-4D12AC-NK-6PACK	4 inch	12W	120 V	TRIAC	780/839/893/861/860 lm	5CCT (2,700/3,000/3,500/4,000/5,000 K)	Brushed nickel	4-11/16" x 5/8"	Round
ASD-JBR-4D12AC-BZ-6PACK	4 inch	12W	120 V	TRIAC	780/839/893/861/860 lm	5CCT (2,700/3,000/3,500/4,000/5,000 K)	Bronze	4-11/16" x 5/8"	Round
ASD-JBR-4D12AC-BK-6PACK	4 inch	12W	120 V	TRIAC	780/839/893/861/860 lm	5CCT (2,700/3,000/3,500/4,000/5,000 K)	Black	4-11/16" x 5/8"	Round
ASD-JBR-6D15AC-WH-6PACK	6 inch	15W	120 V	TRIAC	1,100/1,137/1,225/1,153/1,094 lm	5CCT (2,700/3,000/3,500/4,000/5,000 K)	White	6-5/8" x 5/8"	Round
ASD-JBR-6D15AC-WH-12PACK	6 inch	15W	120 V	TRIAC	1,100/1,137/1,225/1,153/1,094 lm	5CCT (2,700/3,000/3,500/4,000/5,000 K)	White	6-5/8" x 5/8"	Round
ASD-JBR-6D15AC-NK-6PACK	6 inch	15W	120 V	TRIAC	1,100/1,137/1,225/1,153/1,094 lm	5CCT (2,700/3,000/3,500/4,000/5,000 K)	Brushed nickel	6-5/8" x 5/8"	Round
ASD-JBR-6D15AC-BZ-6PACK	6 inch	15W	120 V	TRIAC	1,100/1,137/1,225/1,153/1,094 lm	5CCT (2,700/3,000/3,500/4,000/5,000 K)	Bronze	6-5/8" x 5/8"	Round
ASD-JBR-6D15AC-BK-6PACK	6 inch	15W	120 V	TRIAC	1,100/1,137/1,225/1,153/1,094 lm	5CCT (2,700/3,000/3,500/4,000/5,000 K)	Black	6-5/8" x 5/8"	Round
ASD-JBR-8D20AC-WH	8 inch	20W	120 V	TRIAC	1,600/1,650/1,688/1,746/1,633 lm	5CCT (2,700/3,000/3,500/4,000/5,000 K)	White	8-11/16" x 5/8"	Round
ASD-JBR-8D20AC-BK	8 inch	20W	120 V	TRIAC	1,600/1,650/1,688/1,746/1,633 lm	5CCT (2,700/3,000/3,500/4,000/5,000 K)	Black	8-11/16" x 5/8"	Round
ASD-JBR-12D24AC-WH	12 inch	24W	120 V	TRIAC	1,950/2,142/2,138/2,169/2,077 lm	5CCT (2,700/3,000/3,500/4,000/5,000 K)	White	11-5/8" x 5/8"	Round
ASD-JBR-12D24AC-BK	12 inch	24W	120 V	TRIAC	1,950/2,142/2,138/2,169/2,077 lm	5CCT (2,700/3,000/3,500/4,000/5,000 K)	Black	11-5/8" x 5/8"	Round
<b>JBS SQUARE</b>									
ASD-JBS-3D6AC-WH-6PACK	3 inch	6W	120 V	TRIAC	420/442/456/445/430 lm	5CCT (2,700/3,000/3,500/4,000/5,000 K)	White	3-1/4" x 3-1/4" x 9/16"	Square
ASD-JBS-3D6AC-NK-6PACK	3 inch	6W	120 V	TRIAC	420/442/456/445/430 lm	5CCT (2,700/3,000/3,500/4,000/5,000 K)	Brushed nickel	3-1/4" x 3-1/4" x 9/16"	Square
ASD-JBS-3D6AC-BZ-6PACK	3 inch	6W	120 V	TRIAC	420/442/456/445/430 lm	5CCT (2,700/3,000/3,500/4,000/5,000 K)	Bronze	3-1/4" x 3-1/4" x 9/16"	Square
ASD-JBS-3D6AC-BK-6PACK	3 inch	6W	120 V	TRIAC	420/442/456/445/430 lm	5CCT (2,700/3,000/3,500/4,000/5,000 K)	Black	3-1/4" x 3-1/4" x 9/16"	Square
ASD-JBS-4D12AC-WH-6PACK	4 inch	12W	120 V	TRIAC	750/767/736/784/750 lm	5CCT (2,700/3,000/3,500/4,000/5,000 K)	White	4-5/8" x 4-5/8" x 9/16"	Square
ASD-JBS-4D12AC-NK-6PACK	4 inch	12W	120 V	TRIAC	750/767/736/784/750 lm	5CCT (2,700/3,000/3,500/4,000/5,000 K)	Brushed nickel	4-5/8" x 4-5/8" x 9/16"	Square
ASD-JBS-4D12AC-BZ-6PACK	4 inch	12W	120 V	TRIAC	750/767/736/784/750 lm	5CCT (2,700/3,000/3,500/4,000/5,000 K)	Bronze	4-5/8" x 4-5/8" x 9/16"	Square
ASD-JBS-4D12AC-BK-6PACK	4 inch	12W	120 V	TRIAC	750/767/736/784/750 lm	5CCT (2,700/3,000/3,500/4,000/5,000 K)	Black	4-5/8" x 4-5/8" x 9/16"	Square
ASD-JBS-6D15AC-WH-6PACK	6 inch	15W	120 V	TRIAC	1,050/1,117/1,197/1,144/1,095 lm	5CCT (2,700/3,000/3,500/4,000/5,000 K)	White	6-3/16" x 3/16" x 9/16"	Square
ASD-JBS-6D15AC-NK-6PACK	6 inch	15W	120 V	TRIAC	1,050/1,117/1,197/1,144/1,095 lm	5CCT (2,700/3,000/3,500/4,000/5,000 K)	Brushed nickel	6-3/16" x 3/16" x 9/16"	Square
ASD-JBS-6D15AC-BZ-6PACK	6 inch	15W	120 V	TRIAC	1,050/1,117/1,197/1,144/1,095 lm	5CCT (2,700/3,000/3,500/4,000/5,000 K)	Bronze	6-3/16" x 3/16" x 9/16"	Square
ASD-JBS-6D15AC-BK-6PACK	6 inch	15W	120 V	TRIAC	1,050/1,117/1,197/1,144/1,095 lm	5CCT (2,700/3,000/3,500/4,000/5,000 K)	Black	6-3/16" x 3/16" x 9/16"	Square
ASD-JBS-8D20AC-WH	8 inch	20W	120 V	TRIAC	1,550/1,694/1,743/1,721/1,654 lm	5CCT (2,700/3,000/3,500/4,000/5,000 K)	White	8-11/16" x 8-11/16" x 9/16"	Square
ASD-JBS-8D20AC-BK	8 inch	20W	120 V	TRIAC	1,550/1,694/1,743/1,721/1,654 lm	5CCT (2,700/3,000/3,500/4,000/5,000 K)	Black	8-11/16" x 8-11/16" x 9/16"	Square

For most up-to-date spec sheets please refer to [asd-lighting.com](http://asd-lighting.com)



# LED RECESSED MINI PANEL

Model	Size	Watts	Voltage	Dimmable	Lumens	CCT	Finish	Dimensions	Type
ASD-JBS-12D24AC-WH	12 inch	24W	120 V	TRIAC	1,900/1,932/2,018/2,006/2,152 lm	5CCT (2,700/3,000/3,500/4,000/5,000 K)	White	11-1/2" x 11-1/2" x 5/8"	Square
ASD-JBS-12D24AC-BK	12 inch	24W	120 V	TRIAC	1,900/1,932/2,018/2,006/2,152 lm	5CCT (2,700/3,000/3,500/4,000/5,000 K)	Black	11-1/2" x 11-1/2" x 5/8"	Square
<b>JBR-GB GIMBAL</b>									
ASD-JBR-GB-3D6AC-WH-6PACK	3 inch	6W	120 V	TRIAC	435/449/463/461/443 lm	5CCT (2,700/3,000/3,500/4,000/5,000 K)	White	3-15/16" x 1-1/16"	Round
ASD-JBR-GB-3D6AC-BK-6PACK	3 inch	6W	120 V	TRIAC	435/449/463/461/443 lm	5CCT (2,700/3,000/3,500/4,000/5,000 K)	Black	3-15/16" x 1-1/16"	Round
ASD-JBR-GB-4D12AC-WH-6PACK	4 inch	12W	120 V	TRIAC	777/803/842/793/795 lm	5CCT (2,700/3,000/3,500/4,000/5,000 K)	White	5-1/8" x 1-1/16"	Round
ASD-JBR-GB-4D12AC-BK-6PACK	4 inch	12W	120 V	TRIAC	777/803/842/793/795 lm	5CCT (2,700/3,000/3,500/4,000/5,000 K)	Black	5-1/8" x 1-1/16"	Round
ASD-JBR-GB-6D15AC-WH-6PACK	6 inch	15W	120 V	TRIAC	1,085/1,156/1,232/1,208/1,184 lm	5CCT (2,700/3,000/3,500/4,000/5,000 K)	White	7-5/16" x 1-1/4"	Round
ASD-JBR-GB-6D15AC-BK-6PACK	6 inch	15W	120 V	TRIAC	1,085/1,156/1,232/1,208/1,184 lm	5CCT (2,700/3,000/3,500/4,000/5,000 K)	Black	7-5/16" x 1-1/4"	Round

## PRODUCT SPECIFICATIONS:

Construction & Materials				
Housing	Aluminum			
Lens	PC			
Finish	White, Brushed nickel, Bronze, Black			
Weight	ASD-JBR-3D6AC-WH-6PACK	2.5 lbs (1.1 kg)	ASD-JBS-3D6AC-BZ-6PACK	2.6 lbs (1.2 kg)
	ASD-JBR-3D6AC-NK-6PACK		ASD-JBS-3D6AC-BK-6PACK	
	ASD-JBR-3D6AC-BK-6PACK		ASD-JBS-4D12AC-WH-6PACK	
	ASD-JBR-3D6AC-BK-6PACK	3.7 lbs (1.7 kg)	ASD-JBS-4D12AC-NK-6PACK	3.7 lbs (1.7 kg)
	ASD-JBR-4D12AC-WH-6PACK		ASD-JBS-4D12AC-BZ-6PACK	
	ASD-JBR-4D12AC-WH-12PACK	7.7 lbs (3.5 kg)	ASD-JBS-4D12AC-BK-6PACK	5 lbs (2.3 kg)
	ASD-JBR-4D12AC-NK-6PACK	3.7 lbs (1.7 kg)	ASD-JBS-6D15AC-WH-6PACK	
	ASD-JBR-4D12AC-BZ-6PACK		ASD-JBS-6D15AC-NK-6PACK	
	ASD-JBR-4D12AC-BK-6PACK	4.4 lbs (2 kg)	ASD-JBS-6D15AC-BZ-6PACK	5 lbs (2.3 kg)
	ASD-JBR-6D15AC-WH-6PACK		ASD-JBS-6D15AC-BK-6PACK	
	ASD-JBR-6D15AC-WH-12PACK	9.3 lbs (4.2 kg)	ASD-JBS-8D20AC-WH	1.1 lbs (0.5 kg)
	ASD-JBR-6D15AC-NK-6PACK	4.4 lbs (2 kg)	ASD-JBS-8D20AC-BK	
	ASD-JBR-6D15AC-BZ-6PACK		4.4 lbs (2 kg)	ASD-JBS-12D24AC-WH
	ASD-JBR-6D15AC-BK-6PACK	ASD-JBS-12D24AC-BK		
	ASD-JBR-8D20AC-WH	1.1 lbs (0.5 kg)	ASD-JBR-GB-3D6AC-WH-6PACK	3.8 lbs (1.7 kg)
	ASD-JBR-8D20AC-BK	1.5 lbs (0.7 kg)	ASD-JBR-GB-3D6AC-BK-6PACK	
ASD-JBR-12D24AC-WH	1.5 lbs (0.7 kg)		ASD-JBR-GB-4D12AC-WH-6PACK	5.6 lbs (2.5 kg)
ASD-JBR-12D24AC-BK		ASD-JBR-GB-4D12AC-BK-6PACK		
ASD-JBS-3D6AC-WH-6PACK	2.6 lbs (1.2 kg)	ASD-JBR-GB-6D15AC-WH-6PACK	8.1 lbs (3.7 kg)	
ASD-JBS-3D6AC-NK-6PACK		ASD-JBR-GB-6D15AC-BK-6PACK		
Environmental system				
Work environment	Suitable for Wet Locations, IP43			
Operating temperature	-4°F to 104°F (-20°C to 40°C)			
L-70 Life	> 54,000 hrs			
Optical system				
Luminous flux	ASD-JBR-3D6AC-WH-6PACK	420/445/460/455/436 lm	ASD-JBS-3D6AC-BZ-6PACK	420/442/456/445/430 lm
	ASD-JBR-3D6AC-NK-6PACK		ASD-JBS-3D6AC-BK-6PACK	
	ASD-JBR-3D6AC-BZ-6PACK		ASD-JBS-4D12AC-WH-6PACK	
	ASD-JBR-3D6AC-BK-6PACK	780/839/893/861/860 lm	ASD-JBS-4D12AC-NK-6PACK	750/767/736/784/750 lm
	ASD-JBR-4D12AC-WH-6PACK		ASD-JBS-4D12AC-BZ-6PACK	
	ASD-JBR-4D12AC-WH-12PACK	780/839/893/861/860 lm	ASD-JBS-4D12AC-BK-6PACK	1,050/1,117/1,197/1,144/1,095 lm
	ASD-JBR-4D12AC-NK-6PACK		ASD-JBS-6D15AC-WH-6PACK	
	ASD-JBR-4D12AC-BZ-6PACK		ASD-JBS-6D15AC-NK-6PACK	
	ASD-JBR-4D12AC-BK-6PACK	1,100/1,137/1,225/1,153/1,094 lm	ASD-JBS-6D15AC-BZ-6PACK	1,550/1,694/1,743/1,721/1,654 lm
	ASD-JBR-6D15AC-WH-6PACK		ASD-JBS-6D15AC-BK-6PACK	
	ASD-JBR-6D15AC-WH-12PACK	1,100/1,137/1,225/1,153/1,094 lm	ASD-JBS-8D20AC-WH	1,900/1,932/2,018/2,006/2,152 lm
	ASD-JBR-6D15AC-NK-6PACK		ASD-JBS-8D20AC-BK	
	ASD-JBR-6D15AC-BZ-6PACK	1,600/1,650/1,688/1,746/1,633 lm	ASD-JBS-12D24AC-WH	435/449/463/461/443 lm
	ASD-JBR-6D15AC-BK-6PACK		ASD-JBS-12D24AC-BK	
	ASD-JBR-8D20AC-WH	1,600/1,650/1,688/1,746/1,633 lm	ASD-JBR-GB-3D6AC-WH-6PACK	435/449/463/461/443 lm
	ASD-JBR-8D20AC-BK		ASD-JBR-GB-3D6AC-BK-6PACK	
ASD-JBR-12D24AC-WH	1,950/2,142/2,138/2,169/2,077 lm	ASD-JBR-GB-4D12AC-WH-6PACK	777/803/842/793/795 lm	
ASD-JBR-12D24AC-BK		ASD-JBR-GB-4D12AC-BK-6PACK		
ASD-JBS-3D6AC-WH-6PACK	420/442/456/445/430 lm	ASD-JBR-GB-6D15AC-WH-6PACK	1,085/1,156/1,232/1,208/1,184 lm	
ASD-JBS-3D6AC-NK-6PACK		ASD-JBR-GB-6D15AC-BK-6PACK		
Color temperature	5CCT (2,700/3,000/3,500/4,000/5,000 K)			
CRI	> 90			

For most up-to-date spec sheets please refer to [asd-lighting.com](http://asd-lighting.com)



# LED RECESSED MINI PANEL

Electrical system				
Input voltage	120 V			
Max input current	ASD-JBR-3D6AC-WH-6PACK	0.07 A	ASD-JBS-3D6AC-BZ-6PACK	0.07 A
	ASD-JBR-3D6AC-NK-6PACK		ASD-JBS-3D6AC-BK-6PACK	
	ASD-JBR-3D6AC-BZ-6PACK		ASD-JBS-4D12AC-WH-6PACK	
	ASD-JBR-3D6AC-BK-6PACK	0.14 A	ASD-JBS-4D12AC-NK-6PACK	0.14 A
	ASD-JBR-4D12AC-WH-6PACK		ASD-JBS-4D12AC-BZ-6PACK	
	ASD-JBR-4D12AC-WH-12PACK		ASD-JBS-4D12AC-BK-6PACK	
	ASD-JBR-4D12AC-NK-6PACK	0.14 A	ASD-JBS-6D15AC-WH-6PACK	0.17 A
	ASD-JBR-4D12AC-BZ-6PACK		ASD-JBS-6D15AC-NK-6PACK	
	ASD-JBR-4D12AC-BK-6PACK		ASD-JBS-6D15AC-BZ-6PACK	
	ASD-JBR-6D15AC-WH-6PACK	0.17 A	ASD-JBS-6D15AC-BK-6PACK	0.17 A
	ASD-JBR-6D15AC-WH-12PACK		ASD-JBS-8D20AC-WH	
	ASD-JBR-6D15AC-NK-6PACK		ASD-JBS-8D20AC-BK	
	ASD-JBR-6D15AC-BZ-6PACK	0.23 A	ASD-JBS-12D24AC-WH	0.23 A
	ASD-JBR-6D15AC-BK-6PACK		ASD-JBS-12D24AC-BK	
	ASD-JBR-8D20AC-WH		ASD-JBR-GB-3D6AC-WH-6PACK	
	ASD-JBR-8D20AC-BK	0.23 A	ASD-JBR-GB-3D6AC-BK-6PACK	0.07 A
	ASD-JBR-12D24AC-WH		ASD-JBR-GB-4D12AC-WH-6PACK	
	ASD-JBR-12D24AC-BK		ASD-JBR-GB-4D12AC-BK-6PACK	
	ASD-JBS-3D6AC-WH-6PACK	0.07 A	ASD-JBR-GB-6D15AC-WH-6PACK	0.14 A
	ASD-JBS-3D6AC-NK-6PACK		ASD-JBR-GB-6D15AC-BK-6PACK	
ASD-JBR-3D6AC-WH-6PACK	ASD-JBS-3D6AC-BZ-6PACK			
Inrush current (Action time)	ASD-JBR-3D6AC-NK-6PACK	16 A (0.16 S)	ASD-JBS-3D6AC-BK-6PACK	16 A (0.16 S)
	ASD-JBR-3D6AC-BZ-6PACK		ASD-JBS-4D12AC-WH-6PACK	
	ASD-JBR-3D6AC-BK-6PACK		ASD-JBS-4D12AC-NK-6PACK	
	ASD-JBR-4D12AC-WH-6PACK	23 A (0.16 S)	ASD-JBS-4D12AC-BZ-6PACK	23 A (0.16 S)
	ASD-JBR-4D12AC-WH-12PACK		ASD-JBS-4D12AC-BK-6PACK	
	ASD-JBR-4D12AC-NK-6PACK		ASD-JBS-6D15AC-WH-6PACK	
	ASD-JBR-4D12AC-BZ-6PACK	29 A (0.18 S)	ASD-JBS-6D15AC-NK-6PACK	29 A (0.18 S)
	ASD-JBR-4D12AC-BK-6PACK		ASD-JBS-6D15AC-BZ-6PACK	
	ASD-JBR-6D15AC-WH-6PACK		ASD-JBS-6D15AC-BK-6PACK	
	ASD-JBR-6D15AC-WH-12PACK	29 A (0.18 S)	ASD-JBS-8D20AC-WH	39 A (0.18 S)
	ASD-JBR-6D15AC-NK-6PACK		ASD-JBS-8D20AC-BK	
	ASD-JBR-6D15AC-BZ-6PACK		ASD-JBS-12D24AC-WH	
	ASD-JBR-6D15AC-BK-6PACK	39 A (0.18 S)	ASD-JBS-12D24AC-BK	41 A (0.18 S)
	ASD-JBR-8D20AC-WH		ASD-JBR-GB-3D6AC-WH-6PACK	
	ASD-JBR-8D20AC-BK		ASD-JBR-GB-3D6AC-BK-6PACK	
	ASD-JBR-12D24AC-WH	41 A (0.18 S)	ASD-JBR-GB-4D12AC-WH-6PACK	16 A (0.16 S)
	ASD-JBR-12D24AC-BK		ASD-JBR-GB-4D12AC-BK-6PACK	
	ASD-JBS-3D6AC-WH-6PACK		ASD-JBR-GB-6D15AC-WH-6PACK	
	ASD-JBS-3D6AC-NK-6PACK	16 A (0.16 S)	ASD-JBR-GB-6D15AC-BK-6PACK	23 A (0.16 S)
	ASD-JBR-GB-6D15AC-WH-6PACK		ASD-JBR-GB-6D15AC-BK-6PACK	
ASD-JBR-GB-6D15AC-BK-6PACK	29 A (0.18 S)		29 A (0.18 S)	
Off state power	0W			
Power consumption	ASD-JBR-3D6AC-WH-6PACK	6W	ASD-JBS-3D6AC-BZ-6PACK	6W
	ASD-JBR-3D6AC-NK-6PACK		ASD-JBS-3D6AC-BK-6PACK	
	ASD-JBR-3D6AC-BZ-6PACK		ASD-JBS-4D12AC-WH-6PACK	
	ASD-JBR-3D6AC-BK-6PACK	12W	ASD-JBS-4D12AC-NK-6PACK	12W
	ASD-JBR-4D12AC-WH-6PACK		ASD-JBS-4D12AC-BZ-6PACK	
	ASD-JBR-4D12AC-WH-12PACK		ASD-JBS-4D12AC-BK-6PACK	
	ASD-JBR-4D12AC-NK-6PACK	12W	ASD-JBS-6D15AC-WH-6PACK	15W
	ASD-JBR-4D12AC-BZ-6PACK		ASD-JBS-6D15AC-NK-6PACK	
	ASD-JBR-4D12AC-BK-6PACK		ASD-JBS-6D15AC-BZ-6PACK	
	ASD-JBR-6D15AC-WH-6PACK	15W	ASD-JBS-6D15AC-BK-6PACK	15W
	ASD-JBR-6D15AC-WH-12PACK		ASD-JBS-8D20AC-WH	
	ASD-JBR-6D15AC-NK-6PACK		ASD-JBS-8D20AC-BK	
	ASD-JBR-6D15AC-BZ-6PACK	15W	ASD-JBS-12D24AC-WH	20W
	ASD-JBR-6D15AC-BK-6PACK		ASD-JBS-12D24AC-BK	
	ASD-JBR-8D20AC-WH		ASD-JBR-GB-3D6AC-WH-6PACK	
	ASD-JBR-8D20AC-BK	20W	ASD-JBR-GB-3D6AC-BK-6PACK	6W
	ASD-JBR-12D24AC-WH		ASD-JBR-GB-4D12AC-WH-6PACK	
	ASD-JBR-12D24AC-BK		ASD-JBR-GB-4D12AC-BK-6PACK	
ASD-JBS-3D6AC-WH-6PACK	24W	ASD-JBR-GB-6D15AC-WH-6PACK	12W	
ASD-JBS-3D6AC-NK-6PACK		ASD-JBR-GB-6D15AC-BK-6PACK		
ASD-JBR-GB-6D15AC-WH-6PACK		ASD-JBR-GB-6D15AC-BK-6PACK		
ASD-JBR-GB-6D15AC-BK-6PACK	6W		15W	
Power factor	> 0.9			
Output voltage	36 V			

For most up-to-date spec sheets please refer to [asd-lighting.com](http://asd-lighting.com)

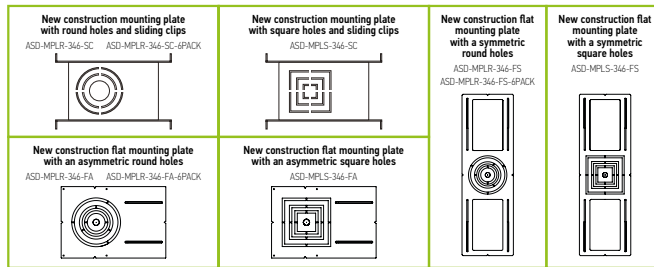


# LED RECESSED MINI PANEL

Electrical system				
Max output current	ASD-JBR-3D6AC-WH-6PACK	0.146 A	ASD-JBS-3D6AC-BZ-6PACK	0.146 A
	ASD-JBR-3D6AC-NK-6PACK		ASD-JBS-3D6AC-BK-6PACK	
	ASD-JBR-3D6AC-BZ-6PACK		ASD-JBS-4D12AC-WH-6PACK	
	ASD-JBR-3D6AC-BK-6PACK	0.293 A	ASD-JBS-4D12AC-NK-6PACK	0.293 A
	ASD-JBR-4D12AC-WH-6PACK		ASD-JBS-4D12AC-BZ-6PACK	
	ASD-JBR-4D12AC-WH-12PACK		ASD-JBS-4D12AC-BK-6PACK	
	ASD-JBR-4D12AC-NK-6PACK	0.366 A	ASD-JBS-6D15AC-WH-6PACK	0.366 A
	ASD-JBR-4D12AC-BZ-6PACK		ASD-JBS-6D15AC-NK-6PACK	
	ASD-JBR-4D12AC-BK-6PACK		ASD-JBS-6D15AC-BZ-6PACK	
	ASD-JBR-6D15AC-WH-6PACK	0.488 A	ASD-JBS-6D15AC-BK-6PACK	0.488 A
	ASD-JBR-6D15AC-WH-12PACK		ASD-JBS-8D20AC-WH	
	ASD-JBR-6D15AC-NK-6PACK		ASD-JBS-8D20AC-BK	
	ASD-JBR-6D15AC-BZ-6PACK	0.586 A	ASD-JBS-12D24AC-WH	0.586 A
	ASD-JBR-6D15AC-BK-6PACK		ASD-JBS-12D24AC-BK	
	ASD-JBR-8D20AC-WH		ASD-JBR-GB-3D6AC-WH-6PACK	
	ASD-JBR-8D20AC-BK	0.146 A	ASD-JBR-GB-3D6AC-BK-6PACK	0.146 A
	ASD-JBR-12D24AC-WH		ASD-JBR-GB-4D12AC-WH-6PACK	
	ASD-JBR-12D24AC-BK		ASD-JBR-GB-4D12AC-BK-6PACK	
ASD-JBS-3D6AC-WH-6PACK	0.146 A	ASD-JBR-GB-6D15AC-WH-6PACK	0.366 A	
ASD-JBS-3D6AC-NK-6PACK		ASD-JBR-GB-6D15AC-BK-6PACK		
Surge protection DM/CM	2.5 kV / 2.5 kV			

Dimming range			
10-100%			
Dimming compatible controls			
Brand	Lutron	Leviton	
Models	CTL-153PDH-WH	S-600PR-WH	DB33K1
	DVW-603PGH-WH	CTL-153P	1A2305
	MIR-600THW-WH	DV-600P	1F4205
	MACL-153M-WH	NT-1000	6633-P
	CT-603PGH-WH	S-603P	VP106
	DVCL-153P-WH	S-600P	IPL06
	SLV-600P-WH	4X603	6683
			6674
		6672	
Regular and voluntary certifications			
5-year limited warranty			
Energy Star listed			
UL certified E473854			

## ACCESSORIES (sold separately):

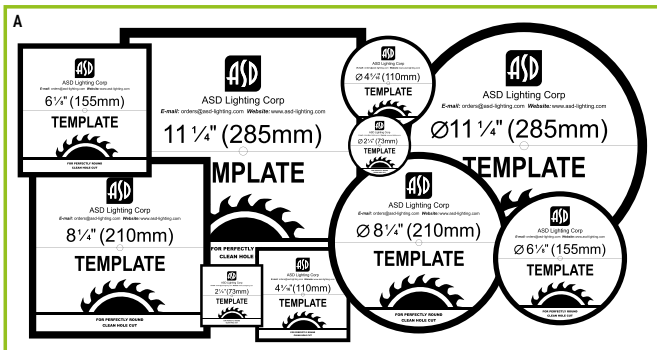


## ACCESSORY COMPATIBILITY LIST:

Accessories	Models						
	New construction mounting plate with round holes and sliding clips ASD-MPLR-346-SC ASD-MPLR-346-SC-6PACK	New construction mounting plate with square holes and sliding clips ASD-MPLS-346-SC	New construction flat mounting plate with an asymmetric round holes ASD-MPLR-346-FA ASD-MPLR-346-FA-6PACK	New construction flat mounting plate with an asymmetric square holes ASD-MPLS-346-FA	New construction flat mounting plate with a symmetric round holes ASD-MPLR-346-FS ASD-MPLR-346-FS-6PACK	New construction flat mounting plate with a symmetric square holes ASD-MPLS-346-FS	
ASD-JBR/ ASD-JBR-GB	3"	•			•		
	4"	•		•		•	
	6"	•		•		•	
	8"						
ASD-JBS	3"		•		•		•
	4"		•		•		•
	6"		•		•		•
	12"						

## PACKAGE CONTENTS:

Description	Q-ty
LED Recessed Mini Panel	1 (6 for 6 pack; 12 for 12 pack)
Template for 3, 4, 6, 8 or 12 inch (A)	1
Box	1



For most up-to-date spec sheets please refer to [asd-lighting.com](http://asd-lighting.com)



# LED RECESSED MINI PANEL

## INSTALLATION GUIDE

### IMPORTANT SAFETY INFORMATION:

Please read all the instructions below before installation.

- ▶ Make sure that the supply voltage corresponds to the rated product voltage.
- ▶ The product must be installed by a qualified electrician in accordance with the National Electrical Code and corresponding local codes.
- ▶ If the product is damaged, do not use it.

### ⚠ WARNING

**RISK OF PERSONAL INJURY – READ and follow all WARNINGS and installation instructions.** Keep or give to the owner for future reference.

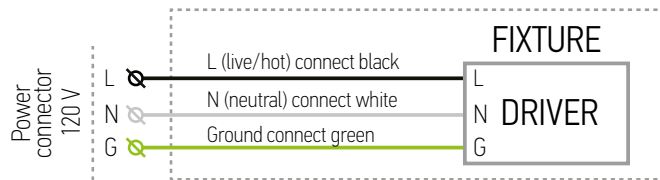
**Risk of cuts:** Wear gloves to prevent cuts or abrasions when removing from carton, handling, installing, and maintaining this product.

**Risk of electric shock:** This product must be installed in accordance with the applicable installation code by a person familiar with the construction and operation of the product and the hazards involved.

**Risk of Fire:** Minimum 194°F supply conductors. Consult a qualified electrician to ensure correct branch circuit conductor.

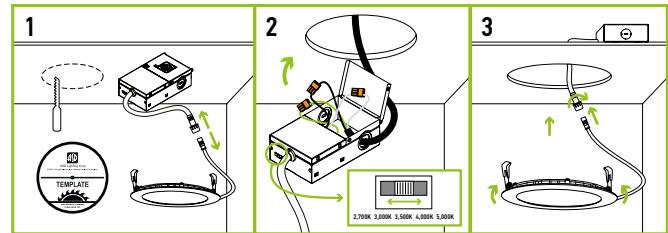
ASD® assumes no responsibility for claims arising out of improper or careless installation or handling of this product.

### ELECTRICAL SCHEMATIC DIAGRAM:



### INSTALLATION STEPS:

1. Use template to cut an appropriate sized hole. Disconnect the fixture from the junction box.
2. Open junction box. Connect the wires: Black to Black, White to White, Green to Green. Secure the connection with quick connector. Choose needed color temperature by adjusting the switch. Close the junction box.
3. Insert the junction box into the cut hole, leaving the connection cable outside. Connect the fixture to the Junction box inserting the cable and securing it with a cap. Push the spring loaded clips upwards and insert the fixture base into the mounting hole. Release the clips, so the fixture fits snugly.



\* The fixture is suitable for ceiling thickness of 10-25 mm.

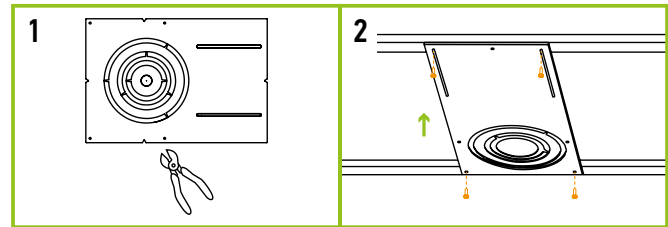
### MOUNTING PLATE INSTALLATION

ASD-MPLR-346-SC ASD-MPLR-346-FA ASD-MPLR-346-FS

ASD-MPLS-346-SC ASD-MPLS-346-FA ASD-MPLS-346-FS

sold separately:

1. Remove the metal ring from the mounting plate according to the size of fixture.
2. Place the mounting plate and secure its position with screws on the beams.



## ORDERING INFORMATION

Model	UPC	Pcs. per carton	Carton size	Carton weight	GTIN 14
<b>JBR ROUND</b>					
ASD-JBR-3D6AC-WH-6PACK	810050737449	2	9.8" x 8.7" x 9.1"	6.8 lb	10810050737446
ASD-JBR-3D6AC-NK-6PACK	810050738385	2	9.8" x 8.7" x 9.1"	6.8 lb	20810050738389
ASD-JBR-3D6AC-BZ-6PACK	819201022458	2	9.8" x 8.7" x 9.1"	6.8 lb	20819201022452
ASD-JBR-3D6AC-BK-6PACK	810050737456	2	9.8" x 8.7" x 9.1"	6.8 lb	10810050737453
ASD-JBR-4D12AC-WH-6PACK	810050737197	2	12.6" x 12.6" x 6.3"	9.3 lb	10810050737194
ASD-JBR-4D12AC-WH-12PACK	810050739719	1	12" x 11.6" x 5.3"	8.8 lb	-
ASD-JBR-4D12AC-NK-6PACK	810050738392	2	12.6" x 12.6" x 6.3"	9.3 lb	20810050738396
ASD-JBR-4D12AC-BZ-6PACK	810050738903	2	12.6" x 12.6" x 6.3"	9.3 lb	10810050738900
ASD-JBR-4D12AC-BK-6PACK	810050737210	2	12.6" x 12.6" x 6.3"	9.3 lb	10810050737217
ASD-JBR-6D15AC-WH-6PACK	810050737241	2	13" x 12.4" x 8.1"	11.1 lb	10810050737248
ASD-JBR-6D15AC-WH-12PACK	810050739726	1	12.4" x 10.8" x 7.3"	10.4 lb	-
ASD-JBR-6D15AC-NK-6PACK	810050738408	2	13" x 12.4" x 8.1"	11.1 lb	20810050738402
ASD-JBR-6D15AC-BZ-6PACK	810050738910	2	13" x 12.4" x 8.1"	11.1 lb	10810050738917
ASD-JBR-6D15AC-BK-6PACK	810050737265	2	13" x 12.4" x 8.1"	11.1 lb	10810050737262
ASD-JBR-8D20AC-WH	810050737470	4	9.7" x 9.7" x 9.5"	6 lb	10810050737477
ASD-JBR-8D20AC-BK	810050737487	4	9.7" x 9.7" x 9.5"	6 lb	10810050737484
ASD-JBR-12D24AC-WH	810050737494	4	12.4" x 9.6" x 12.4"	7.9 lb	10810050737491
ASD-JBR-12D24AC-BK	810050737500	4	12.4" x 9.6" x 12.4"	7.9 lb	10810050737507

For most up-to-date spec sheets please refer to [asd-lighting.com](http://asd-lighting.com)





# LED RECESSED MINI PANEL

Model	UPC	Pcs. per carton	Carton size	Carton weight	GTIN 14
<b>JBS SQUARE</b>					
ASD-JBS-3D6AC-WH-6PACK	810050737524	2	9.8" x 8.7" x 9.1"	6.6 lb	10810050737521
ASD-JBS-3D6AC-NK-6PACK	810050738415	2	9.8" x 8.7" x 9.1"	6.6 lb	20810050738419
ASD-JBS-3D6AC-BZ-6PACK	819201022465	2	9.8" x 8.7" x 9.1"	6.6 lb	20819201022469
ASD-JBS-3D6AC-BK-6PACK	810050737548	2	9.8" x 8.7" x 9.1"	6.6 lb	10810050737545
ASD-JBS-4D12AC-WH-6PACK	810050737289	2	12.6" x 12.6" x 6.3"	9.3 lb	10810050737286
ASD-JBS-4D12AC-NK-6PACK	810050738422	2	12.6" x 12.6" x 6.3"	9.3 lb	20810050738426
ASD-JBS-4D12AC-BZ-6PACK	810050738927	2	12.6" x 12.6" x 6.3"	9.3 lb	10810050738924
ASD-JBS-4D12AC-BK-6PACK	810050737302	2	12.6" x 12.6" x 6.3"	9.3 lb	10810050737309
ASD-JBS-6D15AC-WH-6PACK	810050737326	2	14" x 12.2" x 8.1"	12.1 lb	10810050737323
ASD-JBS-6D15AC-NK-6PACK	810050738439	2	14" x 12.2" x 8.1"	12.1 lb	20810050738433
ASD-JBS-6D15AC-BZ-6PACK	810050738934	2	14" x 12.2" x 8.1"	12.1 lb	10810050738931
ASD-JBS-6D15AC-BK-6PACK	810050737562	2	14" x 12.2" x 8.1"	12.1 lb	10810050737569
ASD-JBS-8D20AC-WH	810050737579	4	10.4" x 9.7" x 9.5"	6.6 lb	10810050737576
ASD-JBS-8D20AC-BK	810050737586	4	10.4" x 9.7" x 9.5"	6.6 lb	10810050737583
ASD-JBS-12D24AC-WH	810050737593	4	13.4" x 9.7" x 12.3"	9.5 lb	10810050737590
ASD-JBS-12D24AC-BK	810050737609	4	13.4" x 9.7" x 12.3"	9.5 lb	10810050737606
<b>JBR-GB GIMBAL</b>					
ASD-JBR-GB-3D6AC-WH-6PACK	810050738613	2	16.1" x 11" x 5.3"	9.6 lb	10810050738610
ASD-JBR-GB-3D6AC-BK-6PACK	810050739382	2	16.1" x 11" x 5.3"	9.6 lb	10810050739389
ASD-JBR-GB-4D10AC-WH-6PACK	810050738620	2	11.4" x 10.8" x 12.6"	13.9 lb	10810050738627
ASD-JBR-GB-4D10AC-BK-6PACK	810050739405	2	11.4" x 10.8" x 12.6"	13.9 lb	10810050739402
ASD-JBR-GB-6D15AC-WH-6PACK	810050738637	2	17.7" x 13.8" x 8.9"	19.2 lb	10810050738634
ASD-JBR-GB-6D15AC-BK-6PACK	810050739429	2	17.7" x 13.8" x 8.9"	19.2 lb	10810050739426

## ACCESSORIES:

Model	Name	Materials	Weight	Dimensions	UPC			
ASD-MPLR-346-SC	New construction mounting plate with round holes and sliding clips	Iron	1.1 lb	14-3/8" x 10-9/16" x 1-5/8"	810050731577			
ASD-MPLR-346-SC-6PACK	New construction mounting plate with round holes and sliding clips 6 pack	Iron	1.1 lb	14-3/8" x 10-9/16" x 1-5/8"	810050731577			
ASD-MPLS-346-SC	New construction mounting plate with square holes and sliding clips	Iron	1.1 lb	14-3/8" x 10-9/16" x 1-5/8"	810050731843			
ASD-MPLR-346-FA	New construction flat mounting plate with an asymmetric round holes	Iron	0.9 lb	13-1/4" x 9-1/16"	810050733854			
ASD-MPLR-346-FA-6PACK	New construction flat mounting plate with an asymmetric round holes 6 pack	Iron	0.9 lb	13-1/4" x 9-1/16"	810050733854			
ASD-MPLS-346-FA	New construction flat mounting plate with an asymmetric square holes	Iron	0.9 lb	13-1/4" x 9-1/16"	810050733861			
ASD-MPLR-346-FS	New construction flat mounting plate with a symmetric round holes	Iron	1 lb	26" x 8-1/4"	810050733878			
ASD-MPLR-346-FS-6PACK	New construction flat mounting plate with a symmetric round holes 6 pack	Iron	1 lb	26" x 8-1/4"	810050733878			
ASD-MPLS-346-FS	New construction flat mounting plate with a symmetric square holes	Iron	1 lb	26" x 8-1/4"	810050733885			
Model	Pcs. in middle box	Middle box size	Middle box weight	GTIN 14 in middle box	Pcs. per carton	Carton size	Carton weight	GTIN 14 in carton
ASD-MPLR-346-SC	6	15" x 11.2" x 7.5"	7.7 lb	10810050731574	12	23.2" x 15.6" x 8.3"	17 lb	20810050731571
ASD-MPLR-346-SC-6PACK	-	-	-	-	2	17.3" x 11.9" x 13.4"	17 lb	10810050739334
ASD-MPLS-346-SC	6	15" x 11.2" x 7.5"	7.5 lb	10810050731840	12	23.2" x 15.6" x 8.3"	16.4 lb	20810050731847
ASD-MPLR-346-FA	6	9.3" x 0.6" x 13.6"	5.6 lb	10810050733851	24	14.4" x 9.8" x 3.1"	22.5 lb	20810050733858
ASD-MPLR-346-FA-6PACK	-	-	-	-	4	14.4" x 9.8" x 3.1"	22.5 lb	10810050739341
ASD-MPLS-346-FA	6	9.3" x 0.6" x 13.6"	5.5 lb	10810050733868	24	14.4" x 9.8" x 3.1"	22.9 lb	20810050733865
ASD-MPLR-346-FS	6	8.5" x 0.6" x 26.4"	6.1 lb	10810050733875	24	27.2" x 9.1" x 3.1"	25.2 lb	20810050733872
ASD-MPLR-346-FS-6PACK	-	-	-	-	4	27.2" x 9.1" x 3.1"	25.2 lb	10810050739358
ASD-MPLS-346-FS	6	8.5" x 0.6" x 26.4"	6 lb	10810050733882	24	27.2" x 9.1" x 3.1"	24.6 lb	20810050733889

For most up-to-date spec sheets please refer to [asd-lighting.com](http://asd-lighting.com)