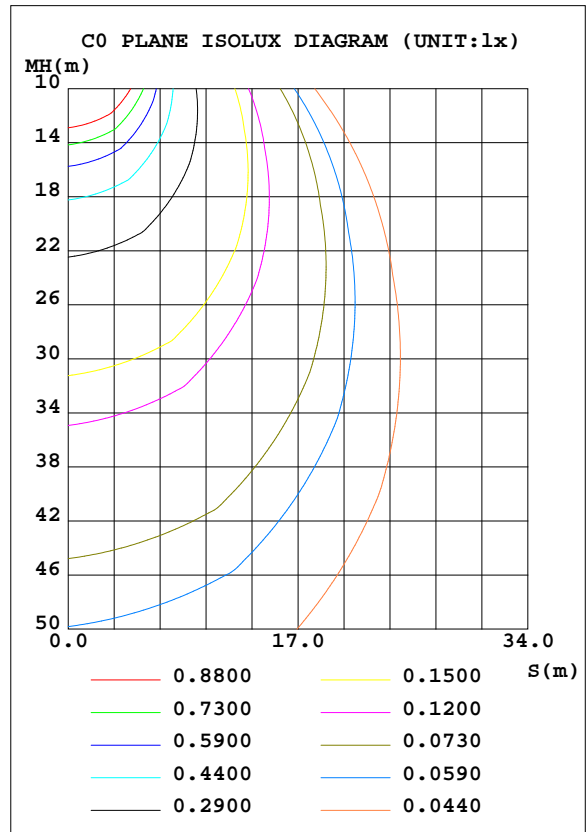
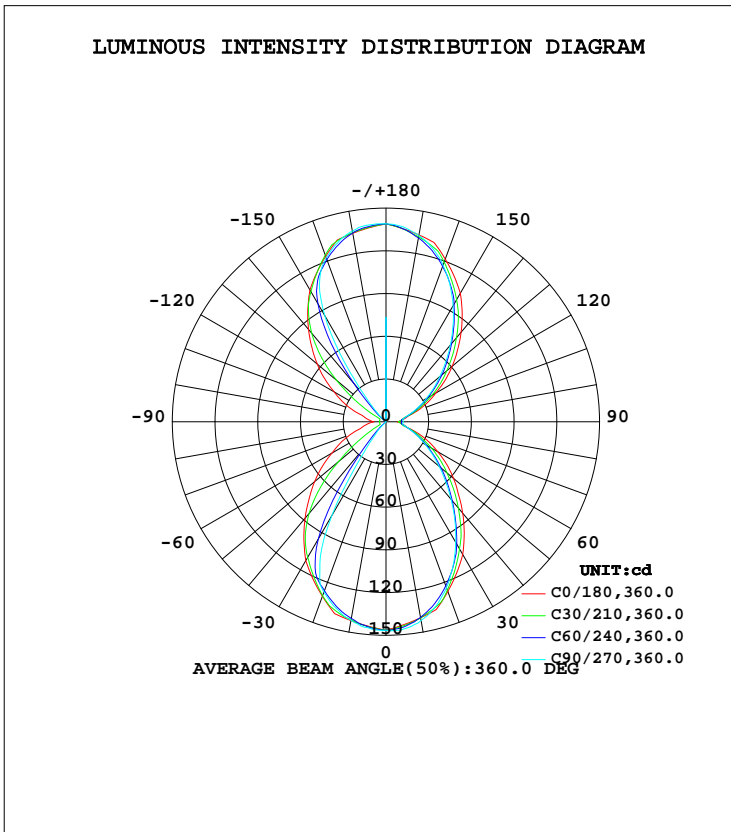


LUMINAIRE PHOTOMETRIC TEST REPORT

Test:U:120.00V I:0.1716A P:20.250W PF:0.9833 Freq:60.00Hz Lamp Flux:520.012x1 lm		
NAME: LED Wall Pack	TYPE:LED	WEIGHT:
SPEC.:ASD-LWS28S-MV-18D22CC-BK_4000K	DIM.:	SERIAL No.:
MFR.: ASD Lighting Corp	SUR.:	Shielding Angle:

DATA OF LAMP		PHOTOMETRIC DATA Eff: 25.68 lm/W			
MODEL	ASD-LWS28S-MV-18D22CC-BK	I <sub>max</sub> (cd)	146.9	S/MH(C0/180)	1.16
NOMINAL POWER(W)	22	LOR(%)	100.0	S/MH(C90/270)	0.88
RATED VOLTAGE(V)	120	TOTAL FLUX(lm)	520.01	η UP, DN(C0-180)	28.9,29.8
NOMINAL FLUX(lm)	520.012	CIE CLASS	DIFFUSE	η UP, DN(C180-360)	20.8,20.5
LAMPS INSIDE	1	η up(%)	49.7	CIBSE SHR NOM	1.00
TEST VOLTAGE(V)	120	η down(%)	50.3	CIBSE SHR MAX	1.10



C Range: 0 - 360DEG  
 C Interval: 15.0DEG  
 Test Speed: HIGH  
 Temperature: 25.0DEG  
 Operators: Alan Wang  
 Test Date: 09 August 2023

γ Range: 0 - 180DEG  
 γ Interval: 1.0DEG  
 Test System: EVERFINE GO-R5000\_V2 SYSTEM V2.00.416  
 Humidity: 42.7%  
 Test Distance: 2.500m [K=1.0391]  
 Remarks:

## ZONAL FLUX DIAGRAM

## ZONAL FLUX DIAGRAM:

$\gamma$	C0	C45	C90	C135	C180	C225	C270	C315	$\gamma$	$\Phi$ zone	$\Phi$ total	%lum,lamp
10	139.8	139.6	141.8	141.2	141.8	140.8	141.5	139.4	0- 10	13.67	13.67	2.63,2.63
20	126.9	125.4	124.1	128.5	130.6	129.0	127.4	125.8	10- 20	37.95	51.61	9.92,9.92
30	107.8	100.7	97.92	104.5	112.7	105.5	76.30	102.0	20- 30	52.76	104.4	20.1,20.1
40	83.88	76.08	71.16	80.11	88.43	57.03	12.23	54.91	30- 40	51.17	155.5	29.9,29.9
50	61.92	53.25	48.82	56.83	65.42	10.82	0.0498	9.688	40- 50	39.64	195.2	37.5,37.5
60	41.88	34.98	31.82	37.84	43.64	1.392	0.0347	1.186	50- 60	28.40	223.6	43,43
70	24.09	20.76	19.70	22.94	26.91	1.420	0.0262	1.162	60- 70	18.92	242.5	46.6,46.6
80	12.76	11.25	12.38	12.43	15.18	1.432	0.0233	1.149	70- 80	11.21	253.7	48.8,48.8
90	7.881	10.02	12.18	10.04	8.446	1.420	0.0329	1.125	80- 90	7.862	261.6	50.3,50.3
100	13.51	11.62	12.45	11.65	14.28	1.377	0.0206	1.142	90-100	7.845	269.4	51.8,51.8
110	24.31	21.49	19.86	22.03	25.46	1.371	0.0216	1.141	100-110	11.10	280.5	53.9,53.9
120	40.27	35.74	32.72	36.83	41.99	1.358	0.0282	2.034	110-120	18.79	299.3	57.6,57.6
130	60.71	53.39	49.42	54.89	63.04	14.53	0.0590	19.45	120-130	28.74	328.1	63.1,63.1
140	82.09	74.87	70.25	76.56	84.68	61.51	20.33	67.05	130-140	40.65	368.7	70.9,70.9
150	104.4	96.71	94.23	98.33	106.9	101.6	85.90	100.4	140-150	51.51	420.2	80.8,80.8
160	121.7	118.7	117.2	120.2	123.8	123.7	122.6	122.0	150-160	50.76	471.0	90.6,90.6
170	133.2	131.3	133.0	132.1	134.5	134.8	136.0	134.1	160-170	36.08	507.1	97.5,97.5
180	139.0	139.0	139.0	139.0	139.0	139.0	139.0	139.0	170-180	12.96	520.0	100,100
DEG	LUMINOUS INTENSITY:cd									UNIT:lm		

Conical surface Flux(90deg): 176.92 lm

%lum = 34.0%

%lamp = 34.0%

Conical surface Flux(120deg): 223.58 lm

%lum = 43.0%

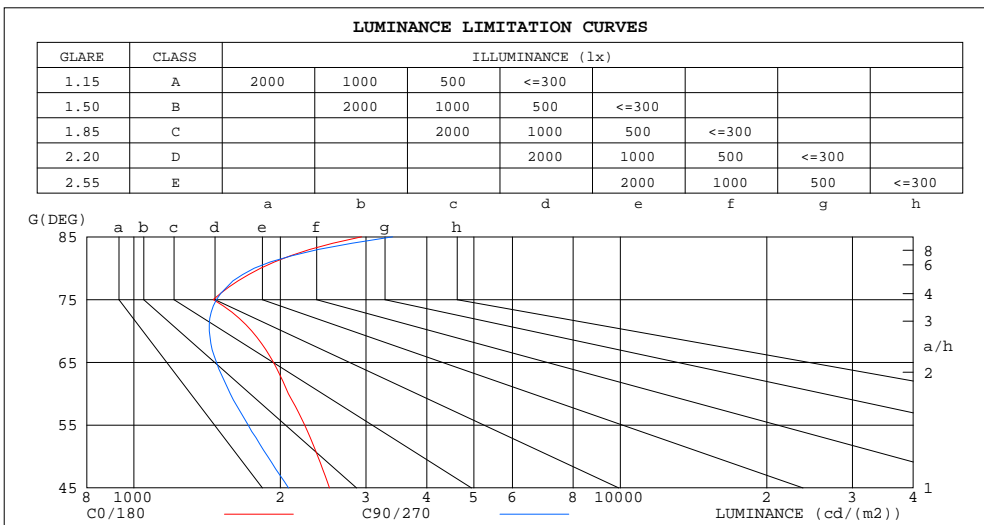
%lamp = 43.0%

C Range: 0 - 360DEG  
 C Interval: 15.0DEG  
 Test Speed: HIGH  
 Temperature: 25.0DEG  
 Operators: Alan Wang  
 Test Date: 09 August 2023

$\gamma$  Range: 0 - 180DEG  
 $\gamma$  Interval: 1.0DEG  
 Test System: EVERFINE GO-R5000\_V2 SYSTEM V2.00.416  
 Humidity: 42.7%  
 Test Distance: 2.500m [K=1.0391]  
 Remarks:

LUMINANCE LIMITATION CURVES

Test:U:120.00V I:0.1716A P:20.250W PF:0.9833 Freq:60.00Hz Lamp Flux:520.012x1 lm		
NAME: LED Wall Pack	TYPE:LED	WEIGHT:
SPEC.:ASD-LWS28S-MV-18D22CC-BK_4000K	DIM.:	SERIAL No.:
MFR.: ASD Lighting Corp	SUR.:	Shielding Angle:



LUMINANCE cd/(m2)		
G (DEG)	C0/180	C90/270
85	2936	3401
80	1822	1768
75	1456	1479
70	1747	1429
65	1936	1479
60	2077	1578
55	2244	1718
50	2389	1884
45	2523	2079

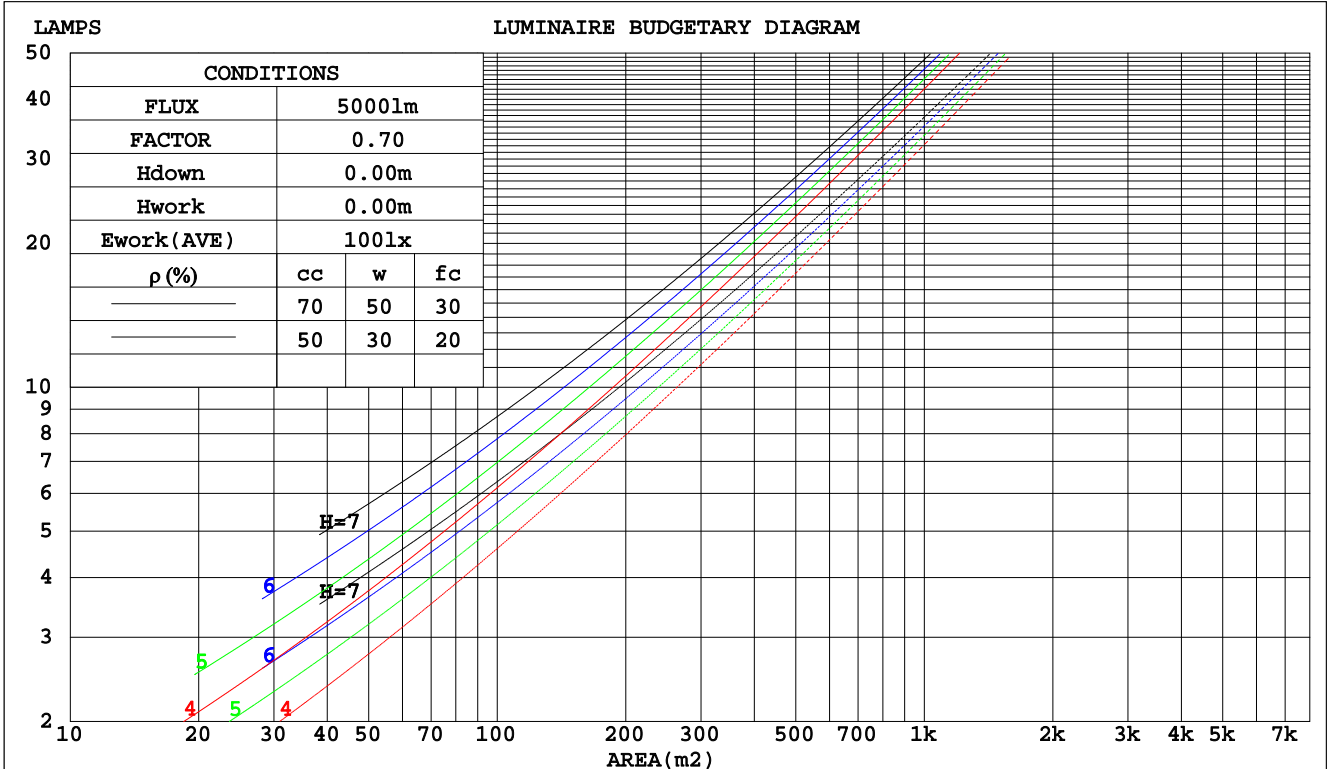
C Range: 0 - 360DEG  
 C Interval: 15.0DEG  
 Test Speed: HIGH  
 Temperature: 25.0DEG  
 Operators: Alan Wang  
 Test Date: 09 August 2023

$\gamma$  Range: 0 - 180DEG  
 $\gamma$  Interval: 1.0DEG  
 Test System: EVERFINE GO-R5000\_V2 SYSTEM V2.00.416  
 Humidity: 42.7%  
 Test Distance: 2.500m [K=1.0391]  
 Remarks:

CU AND LUMINAIRE BUDGETARY ESTIMATE DIAGRAM

Test:U:120.00V I:0.1716A P:20.250W PF:0.9833 Freq:60.00Hz Lamp Flux:520.012x1 lm		
NAME: LED Wall Pack	TYPE:LED	WEIGHT:
SPEC.:ASD-LWS28S-MV-18D22CC-BK_4000K	DIM.:	SERIAL No.:
MFR.: ASD Lighting Corp	SUR.:	Shielding Angle:

pcc	80%			70%			50%			30%			10%			0
	50%	30%	10%	50%	30%	10%	50%	30%	10%	50%	30%	10%	50%	30%	10%	0
pw																0
pfc	20%			20%			20%			20%			20%			0
RCR	RCR:Room Cavity Ratio						Coefficients of Utilization(CU)									
0.0	1.07	1.07	1.07	.99	.99	.99	.84	.84	.84	.69	.69	.69	.56	.56	.56	.50
1.0	.94	.90	.87	.87	.84	.81	.74	.71	.69	.62	.60	.59	.50	.49	.48	.43
2.0	.83	.77	.72	.77	.72	.68	.66	.62	.59	.55	.52	.50	.45	.44	.42	.37
3.0	.74	.67	.61	.69	.62	.58	.59	.54	.50	.49	.46	.43	.41	.39	.37	.33
4.0	.66	.58	.53	.61	.55	.50	.53	.48	.44	.45	.41	.38	.37	.35	.32	.29
5.0	.59	.52	.46	.55	.48	.43	.48	.42	.38	.41	.37	.34	.34	.31	.29	.26
6.0	.54	.46	.40	.50	.43	.38	.43	.38	.34	.37	.33	.30	.31	.28	.26	.23
7.0	.49	.41	.36	.46	.39	.34	.40	.34	.30	.34	.30	.27	.29	.26	.23	.21
8.0	.44	.37	.32	.42	.35	.30	.36	.31	.27	.31	.27	.24	.27	.24	.21	.19
9.0	.41	.34	.29	.38	.32	.27	.34	.28	.25	.29	.25	.22	.25	.22	.20	.17
10.0	.38	.31	.26	.35	.29	.25	.31	.26	.23	.27	.23	.20	.23	.20	.18	.16



C Range: 0 - 360DEG  
 C Interval: 15.0DEG  
 Test Speed: HIGH  
 Temperature: 25.0DEG  
 Operators: Alan Wang  
 Test Date: 09 August 2023

γ Range: 0 - 180DEG  
 γ Interval: 1.0DEG  
 Test System: EVERFINE GO-R5000\_V2 SYSTEM V2.00.416  
 Humidity: 42.7%  
 Test Distance: 2.500m [K=1.0391]  
 Remarks:

WEC AND CCEC

Test:U:120.00V I:0.1716A P:20.250W PF:0.9833 Freq:60.00Hz Lamp Flux:520.012x1 lm		
NAME: LED Wall Pack	TYPE:LED	WEIGHT:
SPEC.:ASD-LWS28S-MV-18D22CC-BK_4000K	DIM.:	SERIAL No.:
MFR.: ASD Lighting Corp	SUR.:	Shielding Angle:

ρcc	80%			70%			50%			30%			10%			0
ρw	50%	30%	10%	50%	30%	10%	50%	30%	10%	50%	30%	10%	50%	30%	10%	0
ρfc	20%			20%			20%			20%			20%			0
RCR	RCR:Room Cavity Ratio						Wall Exitance Coefficients(WEC)									
0.0																
1.0	.269	.153	.048	.247	.141	.045	.206	.118	.038	.168	.097	.031	.133	.077	.025	
2.0	.248	.136	.042	.228	.125	.039	.190	.106	.033	.156	.087	.027	.124	.070	.022	
3.0	.229	.122	.036	.210	.113	.034	.176	.095	.029	.145	.079	.024	.115	.064	.020	
4.0	.212	.110	.032	.195	.102	.030	.164	.087	.026	.135	.072	.022	.108	.058	.018	
5.0	.197	.100	.029	.182	.093	.027	.153	.080	.023	.126	.066	.020	.101	.054	.016	
6.0	.184	.092	.026	.170	.086	.025	.143	.073	.021	.118	.061	.018	.095	.050	.015	
7.0	.172	.085	.024	.159	.079	.023	.134	.068	.020	.111	.057	.017	.089	.046	.014	
8.0	.161	.079	.022	.149	.073	.021	.126	.063	.018	.105	.053	.015	.084	.043	.013	
9.0	.152	.073	.021	.141	.069	.019	.119	.059	.017	.099	.050	.014	.080	.041	.012	
10.0	.143	.069	.019	.133	.064	.018	.113	.055	.016	.094	.047	.013	.076	.038	.011	

ρcc	80%			70%			50%			30%			10%			0
ρw	50%	30%	10%	50%	30%	10%	50%	30%	10%	50%	30%	10%	50%	30%	10%	0
ρfc	20%			20%			20%			20%			20%			0
RCR	RCR:Room Cavity Ratio						Ceiling Cavity Exitance Coefficients(CCEC)									
0.0	.569	.569	.569	.486	.486	.486	.332	.332	.332	.191	.191	.191	.061	.061	.061	
1.0	.559	.538	.519	.479	.462	.447	.327	.318	.309	.188	.184	.180	.060	.059	.058	
2.0	.551	.516	.488	.472	.445	.422	.323	.308	.294	.186	.179	.172	.060	.058	.056	
3.0	.543	.500	.467	.465	.432	.405	.320	.300	.284	.185	.175	.167	.059	.057	.055	
4.0	.536	.488	.452	.460	.422	.393	.316	.294	.277	.183	.172	.164	.059	.056	.054	
5.0	.529	.479	.442	.454	.414	.384	.313	.289	.271	.181	.170	.161	.058	.055	.053	
6.0	.523	.471	.434	.449	.408	.378	.310	.286	.267	.180	.168	.159	.058	.055	.052	
7.0	.517	.465	.428	.445	.403	.373	.307	.283	.265	.178	.166	.157	.058	.054	.052	
8.0	.511	.460	.424	.440	.399	.370	.305	.280	.262	.177	.165	.156	.057	.054	.052	
9.0	.506	.455	.421	.436	.395	.367	.302	.278	.261	.176	.164	.155	.057	.054	.052	
10.0	.501	.451	.418	.432	.392	.365	.300	.276	.259	.175	.163	.155	.057	.054	.051	

C Range: 0 - 360DEG  
 C Interval: 15.0DEG  
 Test Speed: HIGH  
 Temperature: 25.0DEG  
 Operators: Alan Wang  
 Test Date: 09 August 2023

γ Range: 0 - 180DEG  
 γ Interval: 1.0DEG  
 Test System: EVERFINE GO-R5000\_V2 SYSTEM V2.00.416  
 Humidity: 42.7%  
 Test Distance: 2.500m [K=1.0391]  
 Remarks:

UGR(Unified Glare Rating) Table

Test:U:120.00V I:0.1716A P:20.250W PF:0.9833 Freq:60.00Hz Lamp Flux:520.012x1 lm		
NAME: LED Wall Pack	TYPE:LED	WEIGHT:
SPEC.:ASD-LWS28S-MV-18D22CC-BK_4000K	DIM.:	SERIAL No.:
MFR.: ASD Lighting Corp	SUR.:	Shielding Angle:

ceiling/cavity	0.7	0.7	0.5	0.5	0.3	0.7	0.7	0.5	0.5	0.3
walls	0.5	0.3	0.5	0.3	0.3	0.5	0.3	0.5	0.3	0.3
working plane	0.2	0.2	0.2	0.2	0.2	0.2	0.2	0.2	0.2	0.2
Room dimensions	Viewed crosswise					Viewed endwise				
x = 2H y = 2H	12.3	13.2	13.2	14.0	15.1	11.2	12.1	12.1	13.0	14.0
3H	13.5	14.3	14.3	15.1	16.2	12.3	13.1	13.2	14.0	15.1
4H	13.8	14.6	14.7	15.5	16.6	12.9	13.6	13.8	14.5	15.7
6H	14.3	15.0	15.2	15.9	17.0	13.5	14.2	14.4	15.1	16.3
8H	14.6	15.2	15.5	16.1	17.3	13.9	14.6	14.8	15.5	16.7
12H	14.9	15.6	15.9	16.5	17.7	14.5	15.1	15.4	16.1	17.2
4H 2H	12.5	13.2	13.4	14.1	15.2	11.6	12.4	12.5	13.3	14.4
3H	13.8	14.4	14.7	15.4	16.5	12.9	13.5	13.8	14.5	15.6
4H	14.3	14.9	15.3	15.8	17.0	13.6	14.2	14.6	15.1	16.3
6H	14.9	15.4	15.9	16.3	17.6	14.4	14.9	15.4	15.8	17.1
8H	15.3	15.7	16.3	16.7	18.0	14.9	15.4	15.9	16.3	17.6
12H	15.8	16.2	16.8	17.2	18.4	15.6	16.1	16.6	17.0	18.3
8H 4H	14.4	14.8	15.4	15.8	17.1	13.8	14.2	14.8	15.2	16.5
6H	15.2	15.6	16.2	16.5	17.8	14.8	15.2	15.8	16.2	17.5
8H	15.7	16.1	16.7	17.1	18.4	15.5	15.8	16.5	16.8	18.1
12H	16.4	16.7	17.4	17.7	19.0	16.5	16.8	17.5	17.8	19.1
12H 4H	14.4	14.8	15.4	15.8	17.1	13.8	14.2	14.8	15.2	16.5
6H	15.3	15.6	16.3	16.6	17.9	14.9	15.2	15.9	16.2	17.5
8H	15.9	16.2	16.9	17.2	18.5	15.7	16.0	16.7	17.0	18.3
Variations with the observer position at spacings:										
S = 1.0H	+ 0.2 / - 0.2					+ 0.2 / - 0.2				
1.5H	+ 0.2 / - 0.3					+ 0.1 / - 0.2				
2.0H	+ 0.4 / - 0.4					+ 0.1 / - 0.2				

CIE Pub.117, 520.0 lm Total Lamp Luminous Flux Corrected (8log(F/F0) = -2.3)  
 Area: 0.04032 m2

C Range: 0 - 360DEG  
 C Interval: 15.0DEG  
 Test Speed: HIGH  
 Temperature: 25.0DEG  
 Operators: Alan Wang  
 Test Date: 09 August 2023

γ Range: 0 - 180DEG  
 γ Interval: 1.0DEG  
 Test System: EVERFINE GO-R5000\_V2 SYSTEM V2.00.416  
 Humidity: 42.7%  
 Test Distance: 2.500m [K=1.0391]  
 Remarks:

## UTILIZATION FACTORS TABLE

Test:U:120.00V I:0.1716A P:20.250W PF:0.9833 Freq:60.00Hz Lamp Flux:520.012x1 lm		
NAME: LED Wall Pack	TYPE:LED	WEIGHT:
SPEC.:ASD-LWS28S-MV-18D22CC-BK_4000K	DIM.:	SERIAL No.:
MFR.: ASD Lighting Corp	SUR.:	Shielding Angle:

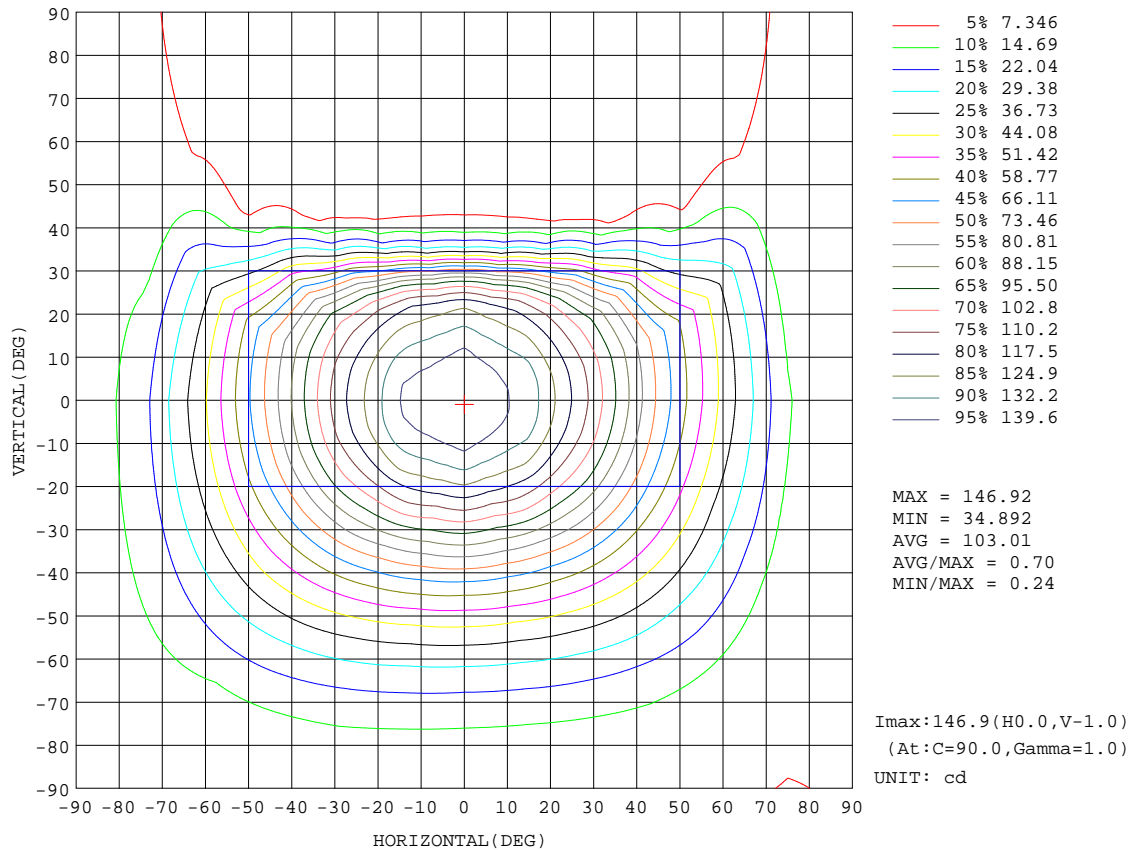
REFLECTANCE										
Ceiling	0.8	0.8	0.8	0.7	0.7	0.7	0.5	0.5	0.5	0
Walls	0.7	0.5	0.3	0.7	0.5	0.3	0.7	0.5	0.3	0
Working plane	0.2	0.2	0.2	0.2	0.2	0.2	0.2	0.2	0.2	0
ROOM INDEX	UTILIZATION FACTORS(PERCENT) $k(RI) \times RCR = 5$									
k = 0.60	49	38	33	46	37	32	42	34	30	22
0.80	58	47	41	54	45	39	48	41	36	27
1.00	65	54	48	61	52	46	54	48	42	30
1.25	71	61	54	67	58	52	59	52	47	34
1.50	76	66	60	71	63	57	62	56	51	36
2.00	83	74	67	77	69	64	66	61	57	39
2.50	87	79	73	80	74	68	69	64	60	40
3.00	90	83	77	83	77	72	71	67	63	42
4.00	94	88	83	87	82	78	74	71	67	44
5.00	96	91	87	89	85	81	76	73	70	45
ROOM INDEX	UF(total)									Direct
According to DIN EN 13032-2 2004			Suspended				SHRNOM = 1.25			

C Range: 0 - 360DEG  
 C Interval: 15.0DEG  
 Test Speed: HIGH  
 Temperature: 25.0DEG  
 Operators: Alan Wang  
 Test Date: 09 August 2023

$\gamma$  Range: 0 - 180DEG  
 $\gamma$  Interval: 1.0DEG  
 Test System: EVERFINE GO-R5000\_V2 SYSTEM V2.00.416  
 Humidity: 42.7%  
 Test Distance: 2.500m [K=1.0391]  
 Remarks:

ISOCANDELA DIAGRAM

Test:U:120.00V I:0.1716A P:20.250W PF:0.9833 Freq:60.00Hz Lamp Flux:520.012x1 lm		
NAME: LED Wall Pack	TYPE:LED	WEIGHT:
SPEC.:ASD-LWS28S-MV-18D22CC-BK_4000K	DIM.:	SERIAL No.:
MFR.: ASD Lighting Corp	SUR.:	Shielding Angle:



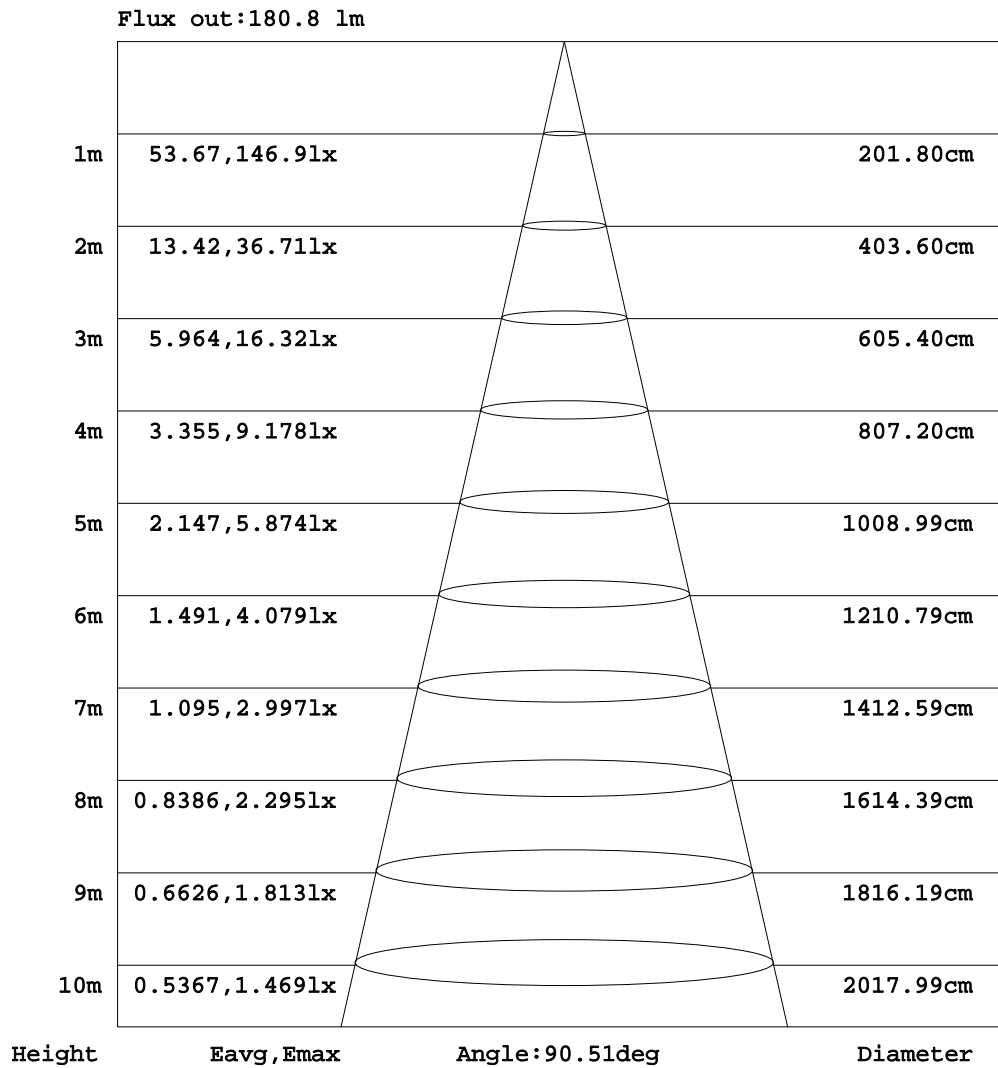
C Range: 0 - 360DEG  
 C Interval: 15.0DEG  
 Test Speed: HIGH  
 Temperature: 25.0DEG  
 Operators:Alan Wang  
 Test Date:09 August 2023

γ Range: 0 - 180DEG  
 γ Interval: 1.0DEG  
 Test System:EVERFINE GO-R5000\_V2 SYSTEM V2.00.416  
 Humidity: 42.7%  
 Test Distance:2.500m [K=1.0391]  
 Remarks:



AAI Figure

Test:U:120.00V I:0.1716A P:20.250W PF:0.9833 Freq:60.00Hz Lamp Flux:520.012x1 lm		
NAME: LED Wall Pack	TYPE:LED	WEIGHT:
SPEC.:ASD-LWS28S-MV-18D22CC-BK_4000K	DIM.:	SERIAL No.:
MFR.: ASD Lighting Corp	SUR.:	Shielding Angle:



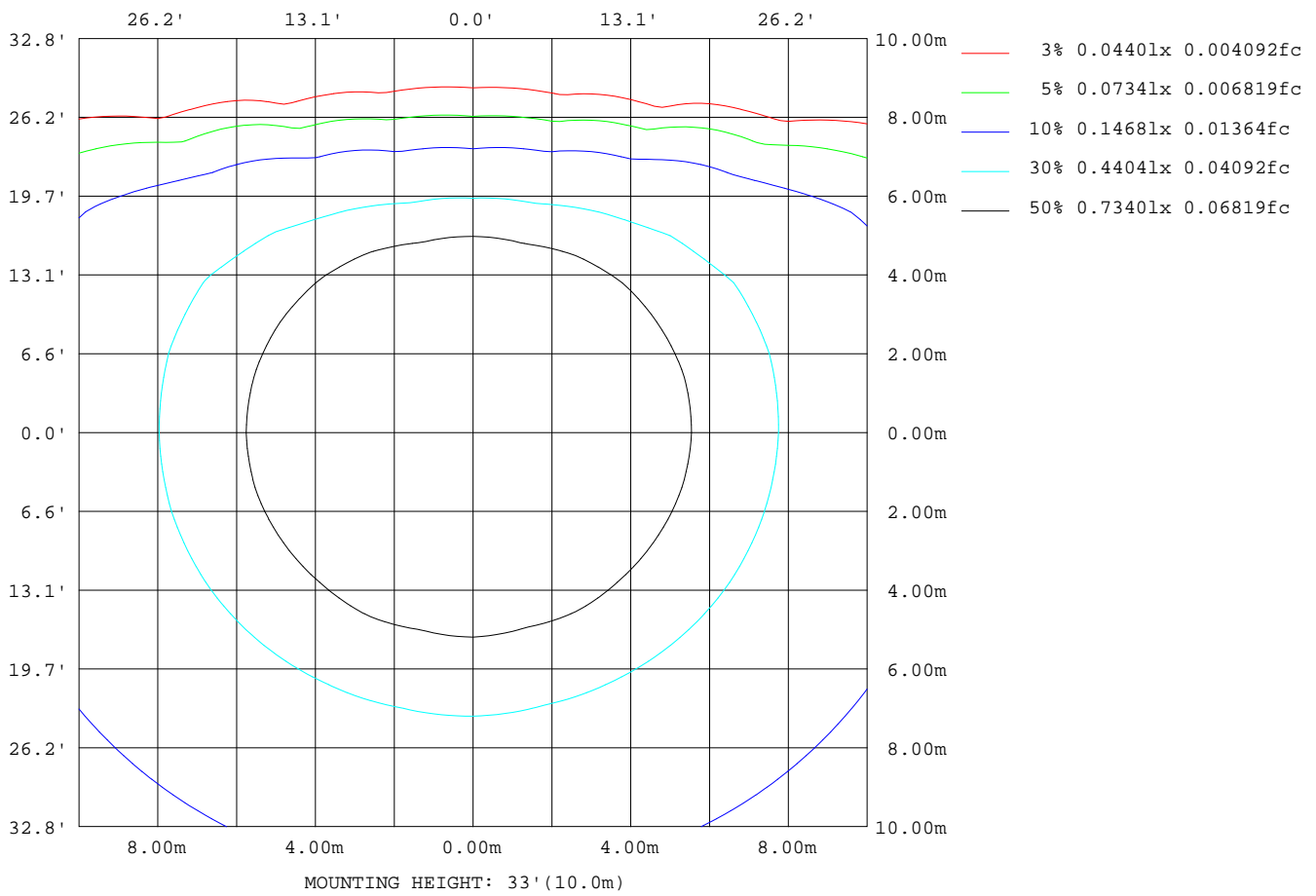
Note:The Curves indicate the illuminated area and the average illumination when the luminaire is at different distance.

C Range: 0 - 360DEG  
 C Interval: 15.0DEG  
 Test Speed: HIGH  
 Temperature: 25.0DEG  
 Operators:Alan Wang  
 Test Date:09 August 2023

γ Range: 0 - 180DEG  
 γ Interval: 1.0DEG  
 Test System:EVERFINE GO-R5000\_V2 SYSTEM V2.00.416  
 Humidity: 42.7%  
 Test Distance:2.500m [K=1.0391]  
 Remarks:

ISOLUX DIAGRAM

Test:U:120.00V I:0.1716A P:20.250W PF:0.9833 Freq:60.00Hz Lamp Flux:520.012x1 lm		
NAME: LED Wall Pack	TYPE:LED	WEIGHT:
SPEC.:ASD-LWS28S-MV-18D22CC-BK_4000K	DIM.:	SERIAL No.:
MFR.: ASD Lighting Corp	SUR.:	Shielding Angle:



C Range: 0 - 360DEG  
 C Interval: 15.0DEG  
 Test Speed: HIGH  
 Temperature: 25.0DEG  
 Operators: Alan Wang  
 Test Date: 09 August 2023

γ Range: 0 - 180DEG  
 γ Interval: 1.0DEG  
 Test System: EVERFINE GO-R5000\_V2 SYSTEM V2.00.416  
 Humidity: 42.7%  
 Test Distance: 2.500m [K=1.0391]  
 Remarks:

## LED Avg.L Report

Test:U:120.00V I:0.1716A P:20.250W PF:0.9833 Freq:60.00Hz Lamp Flux:520.012x1 lm		
NAME: LED Wall Pack	TYPE:LED	WEIGHT:
SPEC.:ASD-LWS28S-MV-18D22CC-BK_4000K	DIM.:	SERIAL No.:
MFR.: ASD Lighting Corp	SUR.:	Shielding Angle:

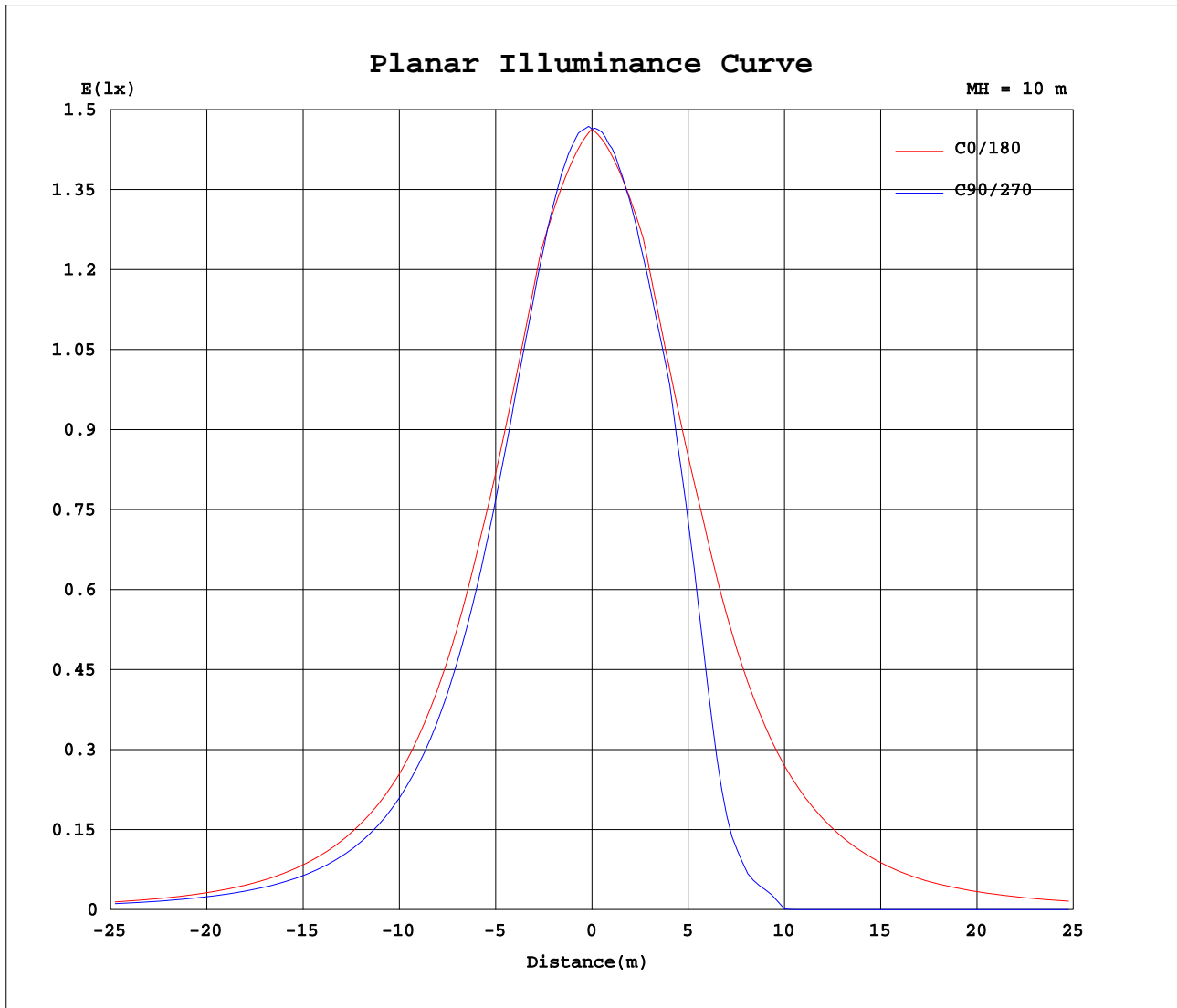
AvgL	cd/m2
L_0~180(65)av	2003
L_0~180(75)av	1617
L_0~180(85)av	3149
L_90~270(65)av	740
L_90~270(75)av	741
L_90~270(85)av	1704
L_45(65)av	874
L_45(75)av	845
L_45(85)av	1729

Standard: GB/T 29293-2012

C Range: 0 - 360DEG  
C Interval: 15.0DEG  
Test Speed: HIGH  
Temperature: 25.0DEG  
Operators: Alan Wang  
Test Date: 09 August 2023

$\gamma$  Range: 0 - 180DEG  
 $\gamma$  Interval: 1.0DEG  
Test System: EVERFINE GO-R5000\_V2 SYSTEM V2.00.416  
Humidity: 42.7%  
Test Distance: 2.500m [K=1.0391]  
Remarks:

Planar Illuminance Curve



C Range: 0 - 360DEG  
 C Interval: 15.0DEG  
 Test Speed: HIGH  
 Temperature: 25.0DEG  
 Operators: Alan Wang  
 Test Date: 09 August 2023

γ Range: 0 - 180DEG  
 γ Interval: 1.0DEG  
 Test System: EVERFINE GO-R5000\_V2 SYSTEM V2.00.416  
 Humidity: 42.7%  
 Test Distance: 2.500m [K=1.0391]  
 Remarks:

LUMINOUS DISTRIBUTION INTENSITY DATA

Test:U:120.00V I:0.1716A P:20.250W PF:0.9833 Freq:60.00Hz Lamp Flux:520.012x1 lm		
NAME: LED Wall Pack	TYPE:LED	WEIGHT:
SPEC.:ASD-LWS28S-MV-18D22CC-BK_4000K	DIM.:	SERIAL No.:
MFR.: ASD Lighting Corp	SUR.:	Shielding Angle:

Table--1

UNIT: cd

C(DEG) γ (DEG)	0	15	30	45	60	75	90	105	120	135	150	165	180	195	210	225	240	255	270
0	146	146	146	146	146	146	146	146	146	146	146	146	146	146	146	146	146	146	146
5	143	144	144	144	145	145	146	145	145	145	145	144	144	144	144	144	145	145	145
10	140	140	140	140	140	140	142	141	141	141	142	142	142	142	141	141	140	141	142
15	137	136	135	133	132	132	134	133	134	136	138	139	139	139	137	136	134	134	136
20	127	127	126	125	123	122	124	123	125	129	130	131	131	130	130	129	126	126	127
25	117	116	115	113	112	110	112	111	115	117	119	121	122	121	120	118	117	110	110
30	108	106	103	101	99.4	96.5	97.9	97.9	102	104	108	111	113	112	110	106	95.2	79.6	76.3
35	95.8	94.0	91.7	88.1	85.4	83.2	84.3	84.8	88.3	92.0	96.6	99.4	101	101	98.9	85.3	58.7	36.7	32.1
40	83.9	81.8	79.1	76.1	72.4	70.7	71.2	72.3	75.3	80.1	83.8	87.1	88.4	88.9	84.0	57.0	24.0	13.8	12.2
45	71.9	69.7	67.3	64.1	60.9	59.4	59.3	60.8	63.6	67.9	71.7	74.8	76.3	77.1	65.1	27.0	9.27	3.83	0.42
50	61.9	58.9	56.0	53.2	50.6	48.7	48.8	50.0	53.2	56.8	60.4	63.7	65.4	65.7	43.5	10.8	0.14	0.05	0.05
55	51.9	48.6	46.2	43.6	41.0	39.5	39.7	40.6	43.4	46.8	50.2	52.9	54.5	53.8	24.2	1.44	0.10	0.04	0.04
60	41.9	38.4	36.8	35.0	32.9	31.7	31.8	32.7	35.0	37.8	40.6	42.2	43.6	41.5	10.5	1.39	0.04	0.03	0.03
65	33.0	29.9	28.4	27.2	25.9	25.1	25.2	26.2	27.8	29.7	31.8	33.7	35.3	30.5	4.52	1.43	0.05	0.03	0.03
70	24.1	22.0	21.6	20.8	19.9	19.6	19.7	20.5	21.6	22.9	24.5	25.9	26.9	20.7	4.49	1.42	0.04	0.03	0.03
75	15.2	14.2	14.9	15.5	15.2	15.2	15.4	15.9	16.6	17.2	17.5	18.1	18.5	11.5	4.55	1.42	0.04	0.03	0.02
80	12.8	11.5	11.5	11.2	12.1	12.2	12.4	12.7	12.9	12.4	13.3	14.2	15.2	9.93	4.56	1.43	0.03	0.04	0.02
85	10.3	9.27	9.99	10.6	10.9	11.8	12.0	11.8	11.3	11.2	10.9	10.9	11.8	9.22	4.56	1.39	0.04	0.05	0.02
90	7.88	7.08	8.52	10.0	11.0	11.9	12.2	11.9	11.2	10.0	8.60	7.58	8.45	8.58	4.61	1.42	0.04	0.05	0.03
95	10.7	9.62	10.3	10.8	11.0	11.8	12.0	11.9	11.2	10.8	10.5	10.3	11.4	9.25	4.54	1.37	0.03	0.04	0.02
100	13.5	12.2	12.1	11.6	12.3	12.4	12.5	12.6	12.6	11.7	12.3	12.9	14.3	9.97	4.56	1.38	0.03	0.03	0.02
105	16.3	15.2	15.8	16.1	15.5	15.2	15.2	15.6	15.9	16.4	16.1	16.1	17.2	11.5	4.60	1.37	0.03	0.03	0.02
110	24.3	22.7	22.3	21.5	20.6	19.9	19.9	20.3	21.1	22.0	23.1	23.9	25.5	20.3	4.62	1.37	0.03	0.02	0.02
115	32.3	30.3	29.2	28.1	26.9	26.0	25.8	26.3	27.5	28.9	30.2	31.8	33.7	29.6	4.75	1.36	0.05	0.03	0.02
120	40.3	38.2	37.3	35.7	33.9	32.7	32.7	33.1	34.8	36.8	38.6	40.1	42.0	40.0	11.9	1.36	0.04	0.03	0.03
125	50.5	48.0	46.4	44.1	42.0	40.6	40.5	41.0	43.0	45.5	47.8	50.1	52.5	52.2	26.5	3.08	0.10	0.04	0.04
130	60.7	57.9	55.8	53.4	51.3	49.5	49.4	50.1	52.4	54.9	57.6	60.3	63.0	63.7	45.2	14.5	3.30	0.24	0.06
135	70.9	68.1	66.1	63.6	61.0	59.7	59.3	60.3	62.1	65.1	68.0	70.7	73.6	74.7	64.2	34.1	13.6	8.67	7.82
140	82.1	79.3	77.0	74.9	71.6	70.1	70.3	70.8	72.9	76.6	79.2	81.9	84.7	85.9	81.1	61.5	34.6	22.1	20.3
145	93.2	90.6	88.6	85.6	83.3	81.5	82.0	82.1	84.5	87.3	90.7	93.3	95.8	97.2	95.0	84.6	67.3	52.2	50.2
150	104	102	99.1	96.7	95.7	93.1	94.2	93.8	96.9	98.3	101	104	107	108	105	102	95.6	86.1	85.9
155	113	111	109	108	107	105	106	105	108	110	111	113	115	116	115	114	112	109	110
160	122	120	120	119	116	116	117	116	117	120	121	122	124	125	125	124	121	121	123
165	130	129	127	126	125	125	126	125	125	127	129	131	132	132	132	130	129	129	130
170	133	133	132	131	131	132	133	132	132	132	133	134	134	135	135	135	135	135	136
175	136	136	136	136	136	137	137	137	137	136	137	137	137	137	137	137	137	138	139
180	139	139	139	139	139	139	139	139	139	139	139	139	139	139	139	139	139	139	139

C Range: 0 - 360DEG  
 C Interval: 15.0DEG  
 Test Speed: HIGH  
 Temperature: 25.0DEG  
 Operators: Alan Wang  
 Test Date: 09 August 2023

γ Range: 0 - 180DEG  
 γ Interval: 1.0DEG  
 Test System: EVERFINE GO-R5000\_V2 SYSTEM V2.00.416  
 Humidity: 42.7%  
 Test Distance: 2.500m [K=1.0391]  
 Remarks:

LUMINOUS DISTRIBUTION INTENSITY DATA

Test:U:120.00V I:0.1716A P:20.250W PF:0.9833 Freq:60.00Hz Lamp Flux:520.012x1 lm		
NAME: LED Wall Pack	TYPE:LED	WEIGHT:
SPEC.:ASD-LWS28S-MV-18D22CC-BK_4000K	DIM.:	SERIAL No.:
MFR.: ASD Lighting Corp	SUR.:	Shielding Angle:

Table--2

UNIT: cd

C(DEG) γ (DEG)	285	300	315	330	345														
0	146	146	146	146	146														
5	144	144	144	143	143														
10	140	139	139	139	140														
15	133	133	133	135	137														
20	125	124	126	126	127														
25	109	114	115	116	117														
30	78.7	92.9	102	105	108														
35	36.3	57.4	82.2	93.9	96.2														
40	13.5	23.3	54.9	79.9	84.7														
45	3.21	8.56	25.8	61.7	73.0														
50	0.06	0.12	9.69	41.1	63.1														
55	0.05	0.09	1.28	23.2	53.3														
60	0.04	0.05	1.19	11.5	43.2														
65	0.04	0.05	1.20	5.88	32.2														
70	0.03	0.04	1.16	4.52	21.7														
75	0.03	0.04	1.14	4.00	11.7														
80	0.04	0.04	1.15	3.86	10.0														
85	0.04	0.04	1.10	3.77	9.33														
90	0.04	0.04	1.13	3.75	8.73														
95	0.04	0.04	1.10	3.75	9.56														
100	0.03	0.04	1.14	3.83	10.5														
105	0.03	0.04	1.11	3.92	12.3														
110	0.03	0.04	1.14	4.30	21.9														
115	0.03	0.05	1.12	5.92	31.8														
120	0.04	0.05	2.03	16.3	41.8														
125	0.05	0.14	6.52	32.5	52.0														
130	0.52	5.84	19.5	50.6	62.4														
135	9.95	16.7	41.7	66.7	72.8														
140	24.6	40.7	67.0	80.5	83.8														
145	55.6	72.0	86.8	92.6	95.0														
150	87.7	97.2	100	103	106														
155	109	111	112	113	114														
160	120	120	122	123	123														
165	128	128	129	130	131														
170	135	134	134	134	134														
175	138	137	137	137	136														
180	139	139	139	139	139														

C Range: 0 - 360DEG  
 C Interval: 15.0DEG  
 Test Speed: HIGH  
 Temperature: 25.0DEG  
 Operators: Alan Wang  
 Test Date: 09 August 2023

γ Range: 0 - 180DEG  
 γ Interval: 1.0DEG  
 Test System: EVERFINE GO-R5000\_V2 SYSTEM V2.00.416  
 Humidity: 42.7%  
 Test Distance: 2.500m [K=1.0391]  
 Remarks: