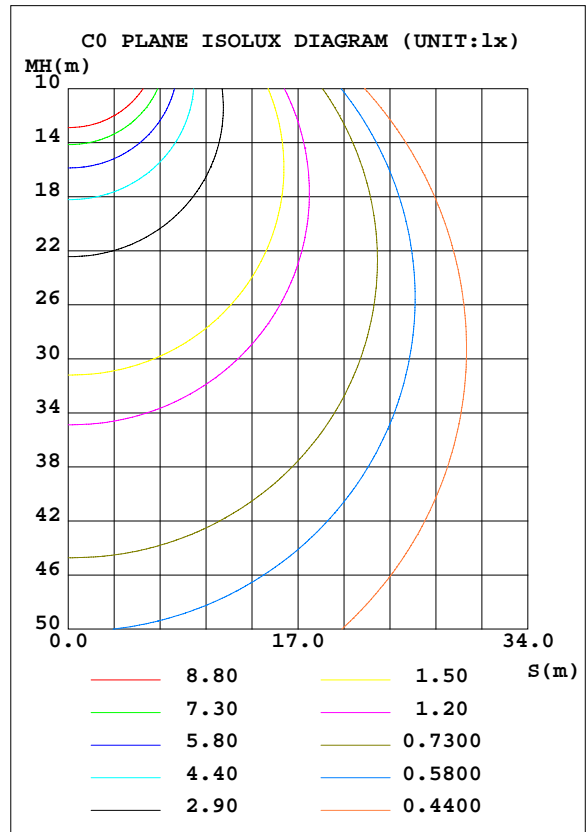
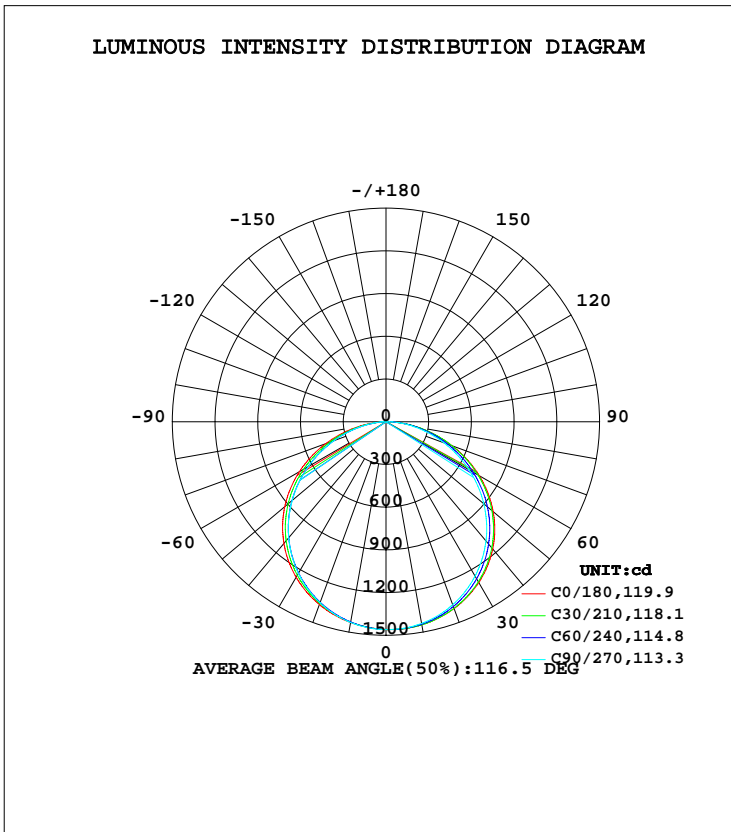


LUMINAIRE PHOTOMETRIC TEST REPORT

Test:U:120.0V I:0.2888A P:34.52W PF:0.9960 Freq:60.00Hz Lamp Flux:4387.57x1 lm		
NAME: ASD Lighting Corp	TYPE:LED	WEIGHT:
SPEC.:ASD-BLP-14A35AC-PRM(5000K)	DIM.:	SERIAL No.:
MFR.: ASD Lighting Corp	SUR.:	Shielding Angle:

DATA OF LAMP		PHOTOMETRIC DATA Eff: 127.12 lm/W			
MODEL	ASD-BLP-14A35AC-PRM	I <sub>max</sub> (cd)	1460	S/MH(C0/180)	1.29
NOMINAL POWER(W)	35	LOR(%)	100.0	S/MH(C90/270)	1.25
RATED VOLTAGE(V)	120-277	TOTAL FLUX(lm)	4387.6	η UP, DN(C0-180)	0.0,50.9
NOMINAL FLUX(lm)	4387.57	CIE CLASS	DIRECT	η UP, DN(C180-360)	0.0,49.0
LAMPS INSIDE	1	η up(%)	0.1	CIBSE SHR NOM	1.25
TEST VOLTAGE(V)	120	η down(%)	99.9	CIBSE SHR MAX	1.35



C Range: 0 - 360DEG  
 C Interval: 5.0DEG  
 Test Speed: HIGH  
 Temperature: 25.1DEG  
 Operators: Alan Wang  
 Test Date: 25 March 2020

γ Range: 0 - 180DEG  
 γ Interval: 0.5DEG  
 Test System: EVERFINE GO-R5000\_V2 SYSTEM V2.0.362  
 Humidity: 46.5%  
 Test Distance: 2.500m [K=0.9942]  
 Remarks:

## ZONAL FLUX DIAGRAM

## ZONAL FLUX DIAGRAM:

$\gamma$	C0	C45	C90	C135	C180	C225	C270	C315	$\gamma$	$\Phi$ zone	$\Phi$ total	%lum, lamp
10	1448	1447	1438	1434	1432	1427	1431	1440	0- 10	138.2	138.2	3.15,3.15
20	1397	1390	1368	1366	1367	1351	1353	1377	10- 20	398.0	536.3	12.2,12.2
30	1303	1288	1252	1254	1262	1232	1230	1270	20- 30	609.3	1146	26.1,26.1
40	1166	1142	1093	1101	1116	1072	1063	1118	30- 40	744.7	1890	43.1,43.1
50	982.8	954.5	897.3	908.6	928.0	872.6	860.4	923.9	40- 50	784.4	2675	61,61
60	755.8	730.9	673.0	683.7	702.6	643.5	630.6	693.6	50- 60	720.2	3395	77.4,77.4
70	494.9	482.6	433.3	438.3	450.7	397.4	388.2	440.2	60- 70	560.1	3955	90.1,90.1
80	225.8	232.6	200.7	195.5	193.7	160.1	158.5	190.1	70- 80	333.7	4289	97.7,97.7
90	5.460	14.52	5.655	0.3712	0.2166	1.737	0.1253	5.734	80- 90	95.69	4384	99.9,99.9
100	0.0969	0.0942	0.0948	0.1048	0.3668	0.3847	0.3578	0.3553	90-100	0.5135	4385	99.9,99.9
110	0.1736	0.1384	0.1575	0.1943	0.4037	0.4200	0.4137	0.4031	100-110	0.2805	4385	99.9,99.9
120	0.3350	0.2285	0.2593	0.3258	0.4679	0.4627	0.4345	0.4287	110-120	0.3141	4386	100,100
130	0.4798	0.3606	0.3980	0.4524	0.6099	0.6654	0.6361	0.5680	120-130	0.3967	4386	100,100
140	0.5704	0.5013	0.5076	0.5559	0.7196	0.8291	0.8046	0.7508	130-140	0.4573	4386	100,100
150	0.6431	0.5441	0.5639	0.6006	0.8618	0.9593	0.9579	0.9126	140-150	0.4447	4387	100,100
160	0.7771	0.6646	0.5989	0.7228	0.9994	1.128	1.043	1.051	150-160	0.3762	4387	100,100
170	0.9158	0.8198	0.7488	0.8432	1.014	1.132	1.084	1.042	160-170	0.2580	4387	100,100
180	0.9137	0.9137	0.9137	0.9137	1.105	1.105	1.105	1.105	170-180	0.0897	4388	100,100
DEG	LUMINOUS INTENSITY:cd Less than 35% Percent = 13.9 %									UNIT:lm		

Conical surface Flux(90deg): 2284 lm

%lum = 52.1%

%lamp = 52.1%

Conical surface Flux(120deg): 3394.9 lm

%lum = 77.4%

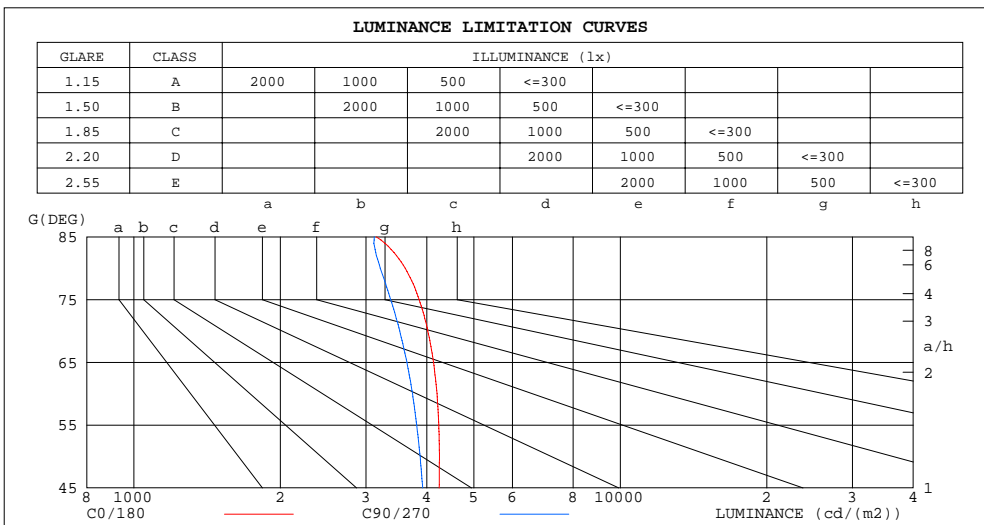
%lamp = 77.4%

C Range: 0 - 360DEG  
 C Interval: 5.0DEG  
 Test Speed: HIGH  
 Temperature: 25.1DEG  
 Operators: Alan Wang  
 Test Date: 25 March 2020

$\gamma$  Range: 0 - 180DEG  
 $\gamma$  Interval: 0.5DEG  
 Test System: EVERFINE GO-R5000\_V2 SYSTEM V2.0.362  
 Humidity: 46.5%  
 Test Distance: 2.500m [K=0.9942]  
 Remarks:

LUMINANCE LIMITATION CURVES

Test:U:120.0V I:0.2888A P:34.52W PF:0.9960 Freq:60.00Hz Lamp Flux:4387.57x1 lm		
NAME: ASD Lighting Corp	TYPE:LED	WEIGHT:
SPEC.:ASD-BLP-14A35AC-PRM(5000K)	DIM.:	SERIAL No.:
MFR.: ASD Lighting Corp	SUR.:	Shielding Angle:



LUMINANCE cd/(m2)		
G(DEG)	C0/180	C90/270
85	3149	3121
80	3612	3211
75	3857	3372
70	4020	3519
65	4130	3641
60	4199	3739
55	4234	3814
50	4247	3878
45	4243	3924

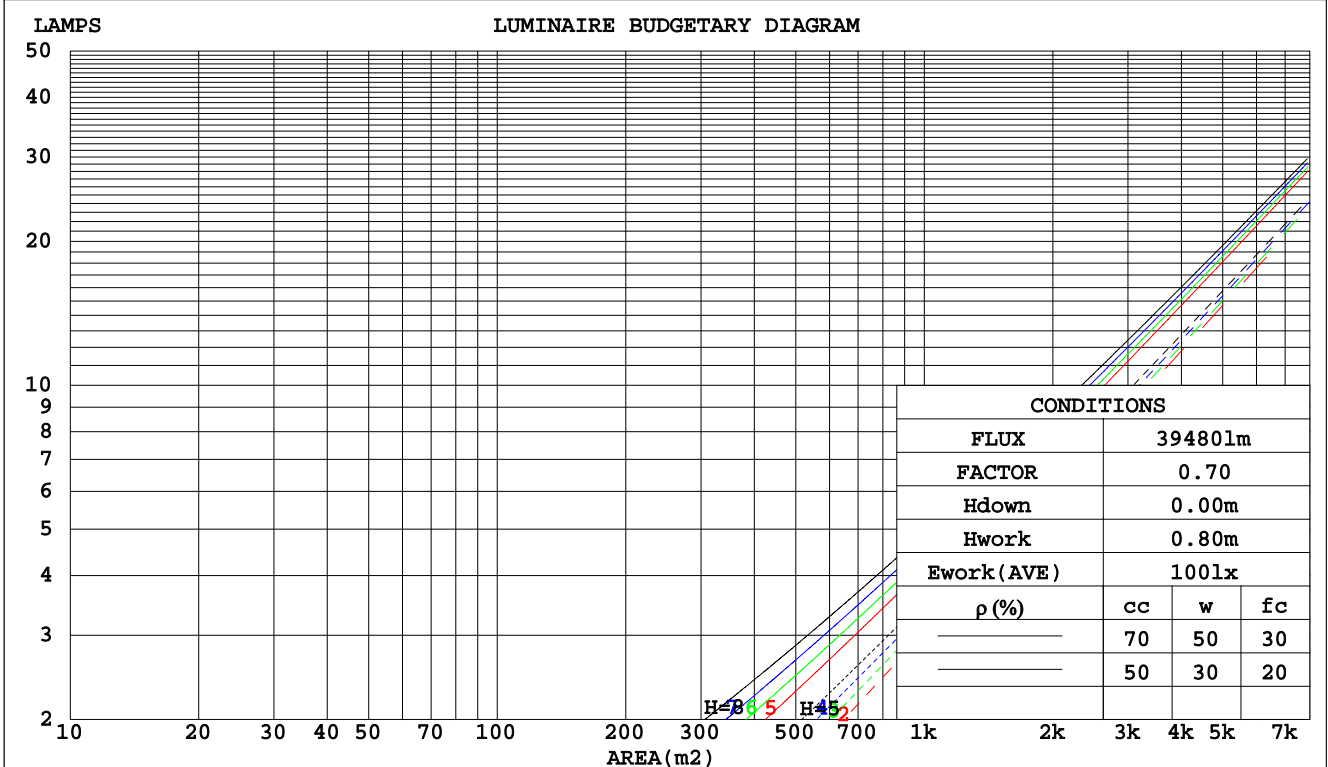
C Range: 0 - 360DEG  
 C Interval: 5.0DEG  
 Test Speed: HIGH  
 Temperature: 25.1DEG  
 Operators: Alan Wang  
 Test Date: 25 March 2020

$\gamma$  Range: 0 - 180DEG  
 $\gamma$  Interval: 0.5DEG  
 Test System: EVERFINE GO-R5000\_V2 SYSTEM V2.0.362  
 Humidity: 46.5%  
 Test Distance: 2.500m [K=0.9942]  
 Remarks:

CU AND LUMINAIRE BUDGETARY ESTIMATE DIAGRAM

Test:U:120.0V I:0.2888A P:34.52W PF:0.9960 Freq:60.00Hz Lamp Flux:4387.57x1 lm		
NAME: ASD Lighting Corp	TYPE:LED	WEIGHT:
SPEC.:ASD-BLP-14A35AC-PRM(5000K)	DIM.:	SERIAL No.:
MFR.: ASD Lighting Corp	SUR.:	Shielding Angle:

pcc	80%			70%			50%			30%			10%			0
pw	50%	30%	10%	50%	30%	10%	50%	30%	10%	50%	30%	10%	50%	30%	10%	0
pfc	20%			20%			20%			20%			20%			0
RCR	RCR:Room Cavity Ratio						Coefficients of Utilization(CU)									
0.0	1.19	1.19	1.19	1.16	1.16	1.16	1.11	1.11	1.11	1.06	1.06	1.06	1.02	1.02	1.02	.00
1.0	1.03	.99	.95	1.01	.97	.93	.97	.94	.90	.93	.90	.88	.89	.87	.85	.83
2.0	.90	.83	.77	.88	.81	.76	.84	.79	.74	.81	.76	.72	.78	.74	.71	.69
3.0	.79	.70	.64	.77	.69	.63	.74	.67	.62	.71	.65	.61	.69	.64	.60	.57
4.0	.69	.60	.54	.68	.60	.53	.66	.58	.52	.63	.57	.52	.61	.56	.51	.49
5.0	.62	.53	.46	.61	.52	.46	.59	.51	.45	.57	.50	.45	.55	.49	.44	.42
6.0	.56	.47	.40	.55	.46	.40	.53	.45	.39	.51	.44	.39	.50	.43	.39	.37
7.0	.50	.41	.35	.50	.41	.35	.48	.40	.35	.47	.40	.35	.45	.39	.34	.32
8.0	.46	.37	.31	.45	.37	.31	.44	.36	.31	.43	.36	.31	.41	.35	.31	.29
9.0	.42	.34	.28	.41	.34	.28	.40	.33	.28	.39	.33	.28	.38	.32	.28	.26
10.0	.39	.31	.25	.38	.31	.25	.37	.30	.25	.36	.30	.25	.35	.29	.25	.23



C Range: 0 - 360DEG  
 C Interval: 5.0DEG  
 Test Speed: HIGH  
 Temperature: 25.1DEG  
 Operators: Alan Wang  
 Test Date: 25 March 2020

γ Range: 0 - 180DEG  
 γ Interval: 0.5DEG  
 Test System: EVERFINE GO-R5000\_V2 SYSTEM V2.0.362  
 Humidity: 46.5%  
 Test Distance: 2.500m [K=0.9942]  
 Remarks:

WEC AND CCEC

Test:U:120.0V I:0.2888A P:34.52W PF:0.9960 Freq:60.00Hz Lamp Flux:4387.57x1 lm		
NAME: ASD Lighting Corp	TYPE:LED	WEIGHT:
SPEC.:ASD-BLP-14A35AC-PRM(5000K)	DIM.:	SERIAL No.:
MFR.: ASD Lighting Corp	SUR.:	Shielding Angle:

ρcc	80%			70%			50%			30%			10%			0
ρw	50%	30%	10%	50%	30%	10%	50%	30%	10%	50%	30%	10%	50%	30%	10%	0
ρfc	20%			20%			20%			20%			20%			0
RCR	RCR:Room Cavity Ratio						Wall Exitance Coefficients(WEC)									
0.0																
1.0	.318	.181	.057	.311	.177	.056	.297	.171	.054	.285	.164	.053	.274	.159	.051	
2.0	.298	.163	.050	.292	.161	.049	.280	.156	.048	.269	.151	.047	.259	.146	.046	
3.0	.275	.146	.044	.269	.144	.043	.259	.140	.043	.249	.137	.042	.240	.133	.041	
4.0	.253	.131	.039	.248	.130	.038	.239	.127	.038	.230	.124	.037	.222	.121	.037	
5.0	.233	.119	.034	.229	.118	.034	.221	.115	.034	.213	.113	.033	.206	.110	.033	
6.0	.216	.108	.031	.212	.107	.031	.205	.105	.031	.198	.103	.030	.192	.101	.030	
7.0	.201	.099	.028	.198	.098	.028	.191	.097	.028	.185	.095	.028	.179	.093	.027	
8.0	.188	.092	.026	.184	.091	.026	.179	.089	.025	.173	.088	.025	.168	.086	.025	
9.0	.176	.085	.024	.173	.084	.024	.168	.083	.023	.163	.082	.023	.158	.080	.023	
10.0	.165	.079	.022	.162	.078	.022	.158	.077	.022	.153	.076	.022	.149	.075	.022	

ρcc	80%			70%			50%			30%			10%			0
ρw	50%	30%	10%	50%	30%	10%	50%	30%	10%	50%	30%	10%	50%	30%	10%	0
ρfc	20%			20%			20%			20%			20%			0
RCR	RCR:Room Cavity Ratio						Ceiling Cavity Exitance Coefficients(CCEC)									
0.0	.191	.191	.191	.163	.163	.163	.111	.111	.111	.064	.064	.064	.020	.020	.020	
1.0	.181	.157	.134	.155	.134	.116	.106	.092	.080	.061	.054	.046	.020	.017	.015	
2.0	.174	.132	.098	.149	.114	.085	.102	.079	.059	.059	.046	.035	.019	.015	.011	
3.0	.166	.115	.074	.142	.099	.064	.098	.069	.045	.056	.040	.027	.018	.013	.009	
4.0	.158	.102	.058	.136	.088	.051	.093	.061	.036	.054	.036	.021	.017	.012	.007	
5.0	.151	.091	.047	.130	.079	.041	.089	.055	.029	.052	.032	.017	.017	.011	.006	
6.0	.144	.083	.039	.123	.072	.034	.085	.050	.024	.049	.030	.014	.016	.010	.005	
7.0	.137	.076	.033	.118	.066	.029	.081	.046	.021	.047	.027	.012	.015	.009	.004	
8.0	.130	.070	.029	.112	.061	.025	.078	.043	.018	.045	.025	.011	.015	.008	.004	
9.0	.124	.065	.026	.107	.057	.022	.074	.040	.016	.043	.024	.009	.014	.008	.003	
10.0	.118	.061	.023	.102	.053	.020	.071	.037	.014	.041	.022	.008	.013	.007	.003	

C Range: 0 - 360DEG  
 C Interval: 5.0DEG  
 Test Speed: HIGH  
 Temperature: 25.1DEG  
 Operators: Alan Wang  
 Test Date: 25 March 2020

γ Range: 0 - 180DEG  
 γ Interval: 0.5DEG  
 Test System: EVERFINE GO-R5000\_V2 SYSTEM V2.0.362  
 Humidity: 46.5%  
 Test Distance: 2.500m [K=0.9942]  
 Remarks:

UGR(Unified Glare Rating) Table

Test:U:120.0V I:0.2888A P:34.52W PF:0.9960 Freq:60.00Hz Lamp Flux:4387.57x1 lm										
NAME: ASD Lighting Corp					TYPE:LED			WEIGHT:		
SPEC.:ASD-BLP-14A35AC-PRM(5000K)					DIM.:			SERIAL No.:		
MFR.: ASD Lighting Corp					SUR.:			Shielding Angle:		
ceiling/cavity	0.7	0.7	0.5	0.5	0.3	0.7	0.7	0.5	0.5	0.3
walls	0.5	0.3	0.5	0.3	0.3	0.5	0.3	0.5	0.3	0.3
working plane	0.2	0.2	0.2	0.2	0.2	0.2	0.2	0.2	0.2	0.2
Room dimensions	Viewed crosswise					Viewed endwise				
x = 2H y = 2H	13.1	14.6	13.4	14.8	15.0	12.6	14.1	12.8	14.3	14.5
3H	14.8	16.2	15.1	16.5	16.7	14.2	15.6	14.5	15.8	16.1
4H	15.5	16.9	15.9	17.2	17.4	14.8	16.2	15.1	16.4	16.7
6H	16.1	17.4	16.4	17.7	17.9	15.3	16.6	15.7	16.9	17.2
8H	16.3	17.5	16.6	17.8	18.1	15.5	16.8	15.9	17.1	17.3
12H	16.4	17.6	16.8	17.9	18.2	15.7	16.9	16.0	17.2	17.5
4H 2H	13.7	15.1	14.0	15.3	15.6	13.3	14.7	13.6	14.9	15.2
3H	15.6	16.8	16.0	17.1	17.4	15.1	16.3	15.4	16.6	16.9
4H	16.5	17.6	16.9	17.9	18.2	15.9	17.0	16.3	17.3	17.6
6H	17.2	18.2	17.6	18.5	18.9	16.5	17.5	16.9	17.9	18.2
8H	17.5	18.4	17.9	18.8	19.1	16.8	17.7	17.2	18.1	18.5
12H	17.7	18.5	18.1	18.9	19.3	17.0	17.8	17.4	18.2	18.6
8H 4H	16.8	17.7	17.2	18.1	18.5	16.3	17.2	16.7	17.5	17.9
6H	17.7	18.4	18.1	18.8	19.3	17.1	17.9	17.5	18.3	18.7
8H	18.1	18.7	18.5	19.2	19.6	17.5	18.1	17.9	18.6	19.0
12H	18.4	18.9	18.8	19.4	19.9	17.8	18.3	18.2	18.8	19.3
12H 4H	16.8	17.6	17.2	18.0	18.4	16.3	17.1	16.7	17.5	17.9
6H	17.8	18.4	18.2	18.9	19.3	17.2	17.9	17.7	18.3	18.8
8H	18.2	18.8	18.7	19.2	19.7	17.6	18.2	18.1	18.6	19.1
Variations with the observer position at spacings:										
S = 1.0H	+ 0.1 / - 0.2					+ 0.1 / - 0.2				
1.5H	+ 0.2 / - 0.3					+ 0.2 / - 0.3				
2.0H	+ 0.2 / - 0.4					+ 0.1 / - 0.4				

CIE Pub.117, 4388 lm Total Lamp Luminous Flux Correct (8log(F/F0) = 5.1)

C Range: 0 - 360DEG  
 C Interval: 5.0DEG  
 Test Speed: HIGH  
 Temperature: 25.1DEG  
 Operators: Alan Wang  
 Test Date: 25 March 2020

γ Range: 0 - 180DEG  
 γ Interval: 0.5DEG  
 Test System: EVERFINE GO-R5000\_V2 SYSTEM V2.0.362  
 Humidity: 46.5%  
 Test Distance: 2.500m [K=0.9942]  
 Remarks:

UTILIZATION FACTORS TABLE

Test:U:120.0V I:0.2888A P:34.52W PF:0.9960 Freq:60.00Hz Lamp Flux:4387.57x1 lm		
NAME: ASD Lighting Corp	TYPE:LED	WEIGHT:
SPEC.:ASD-BLP-14A35AC-PRM(5000K)	DIM.:	SERIAL No.:
MFR.: ASD Lighting Corp	SUR.:	Shielding Angle:

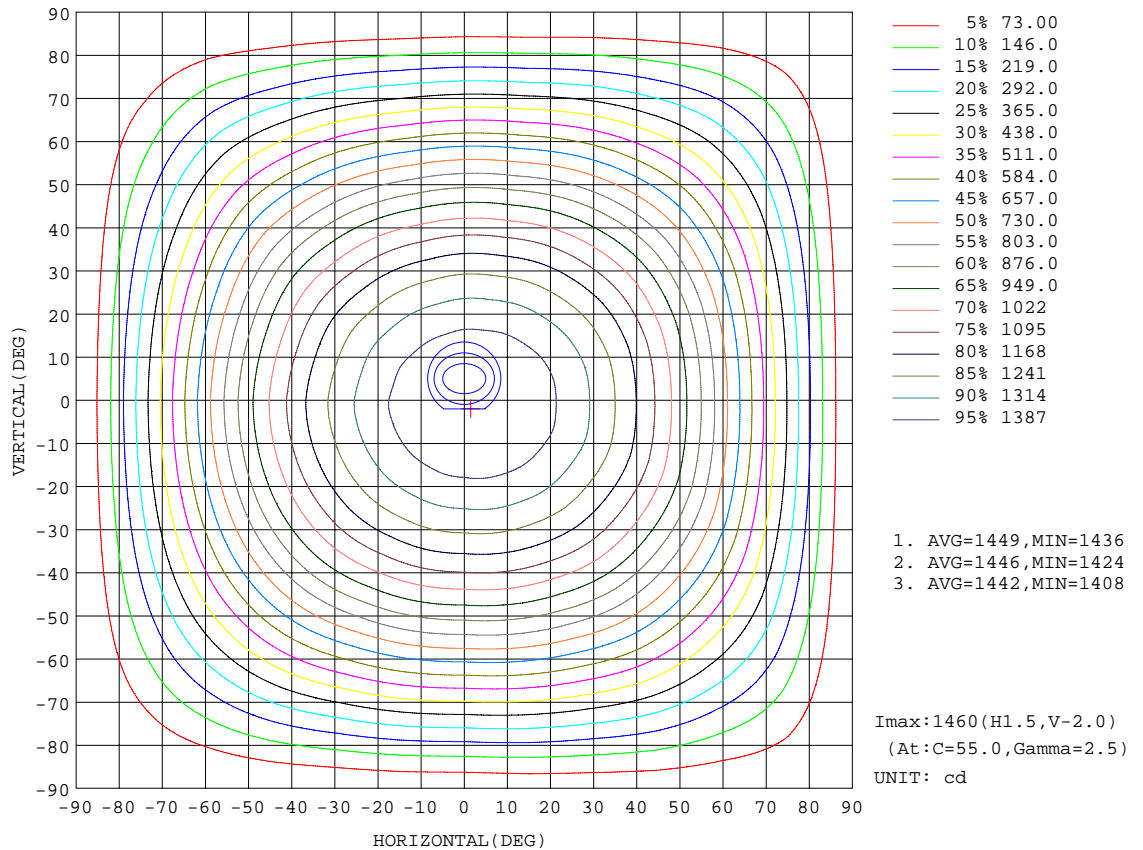
REFLECTANCE										
Ceiling	0.8	0.8	0.8	0.7	0.7	0.7	0.5	0.5	0.5	0
Walls	0.7	0.5	0.3	0.7	0.5	0.3	0.7	0.5	0.3	0
Working plane	0.2	0.2	0.2	0.2	0.2	0.2	0.2	0.2	0.2	0
ROOM INDEX	UTILIZATION FACTORS(PERCENT) $k(RI) \times RCR = 5$									
k = 0.60	57	45	38	56	45	38	55	44	38	31
0.80	67	55	47	66	54	47	64	54	47	40
1.00	75	64	56	74	63	56	72	65	56	48
1.25	82	72	64	81	71	64	78	69	63	56
1.50	87	77	70	86	76	70	83	74	68	61
2.00	94	86	79	92	84	78	89	82	77	69
2.50	98	90	84	96	89	83	92	86	81	73
3.00	102	95	89	100	93	88	95	90	86	77
4.00	106	100	95	103	98	94	99	95	91	82
5.00	108	103	99	106	101	98	101	98	95	85
ROOM INDEX	UF(total)									Direct
According to DIN EN 13032-2 2004			Suspended				SHRNOM = 1.25			

C Range: 0 - 360DEG  
 C Interval: 5.0DEG  
 Test Speed: HIGH  
 Temperature: 25.1DEG  
 Operators: Alan Wang  
 Test Date: 25 March 2020

$\gamma$  Range: 0 - 180DEG  
 $\gamma$  Interval: 0.5DEG  
 Test System: EVERFINE GO-R5000\_V2 SYSTEM V2.0.362  
 Humidity: 46.5%  
 Test Distance: 2.500m [K=0.9942]  
 Remarks:

ISOCANDELA DIAGRAM

Test:U:120.0V I:0.2888A P:34.52W PF:0.9960 Freq:60.00Hz Lamp Flux:4387.57x1 lm		
NAME: ASD Lighting Corp	TYPE:LED	WEIGHT:
SPEC.:ASD-BLP-14A35AC-PRM(5000K)	DIM.:	SERIAL No.:
MFR.: ASD Lighting Corp	SUR.:	Shielding Angle:



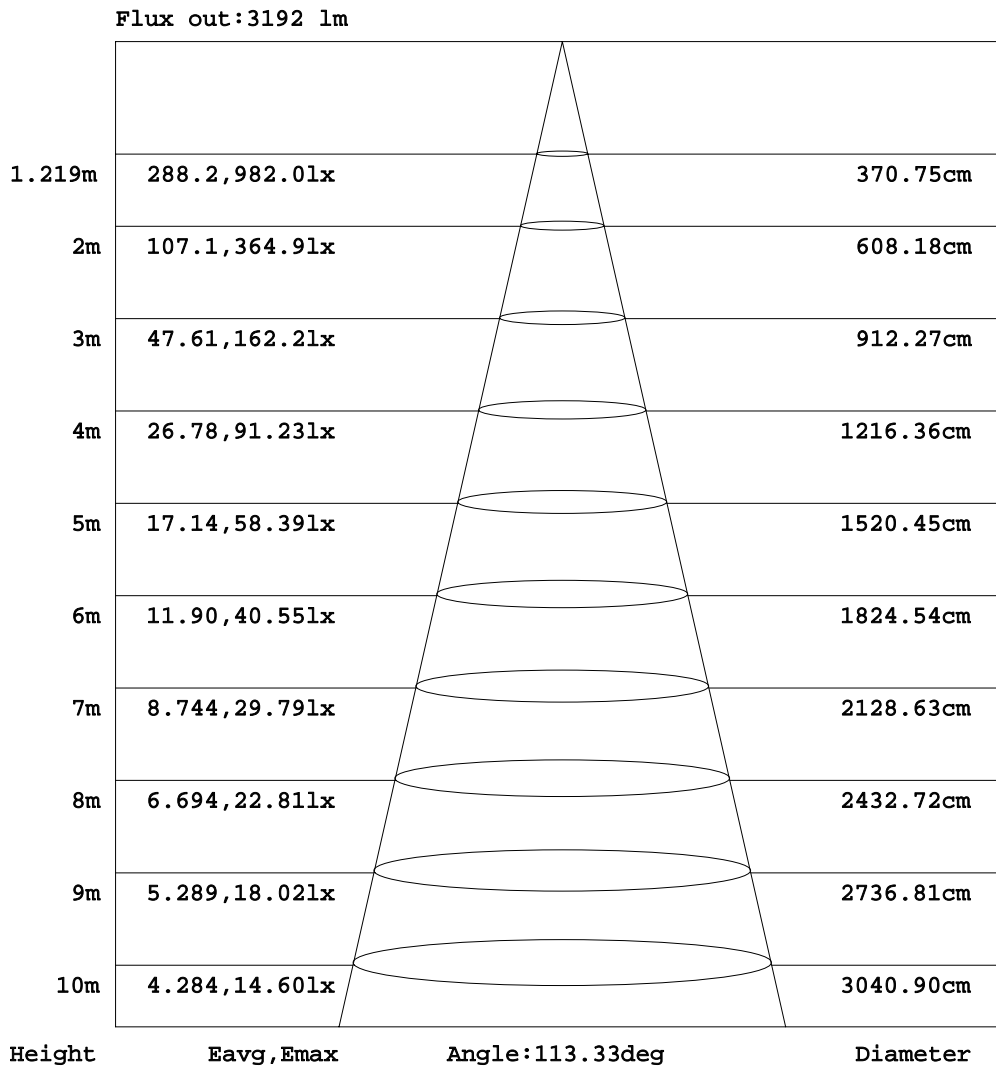
C Range: 0 - 360DEG  
 C Interval: 5.0DEG  
 Test Speed: HIGH  
 Temperature: 25.1DEG  
 Operators:Alan Wang  
 Test Date:25 March 2020

γ Range: 0 - 180DEG  
 γ Interval: 0.5DEG  
 Test System:EVERFINE GO-R5000\_V2 SYSTEM V2.0.362  
 Humidity: 46.5%  
 Test Distance:2.500m [K=0.9942]  
 Remarks:



AAI Figure

Test:U:120.0V I:0.2888A P:34.52W PF:0.9960 Freq:60.00Hz Lamp Flux:4387.57x1 lm		
NAME: ASD Lighting Corp	TYPE:LED	WEIGHT:
SPEC.:ASD-BLP-14A35AC-PRM(5000K)	DIM.:	SERIAL No.:
MFR.: ASD Lighting Corp	SUR.:	Shielding Angle:



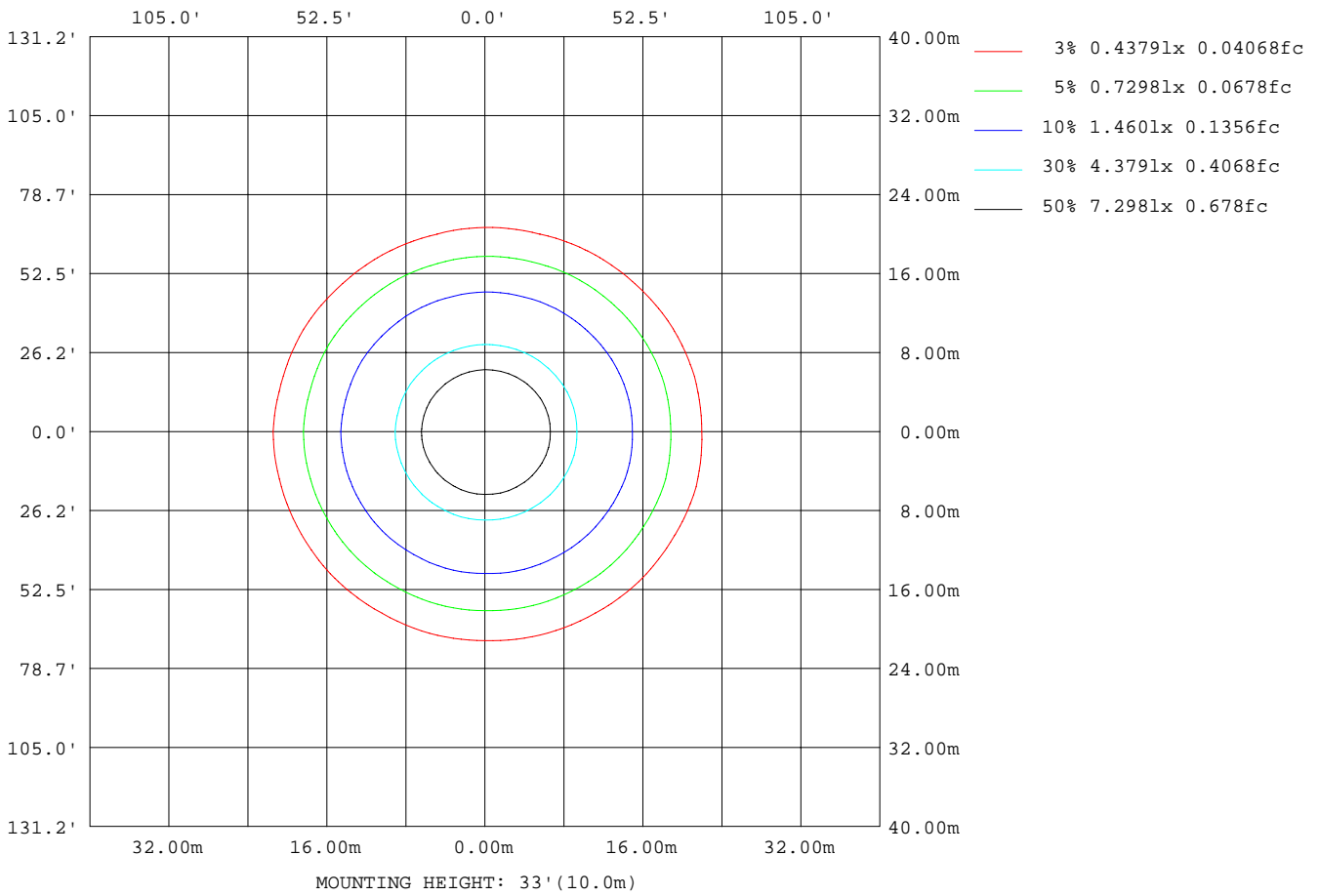
Note:The Curves indicate the illuminated area and the average illumination when the luminaire is at different distance.

C Range: 0 - 360DEG  
 C Interval: 5.0DEG  
 Test Speed: HIGH  
 Temperature: 25.1DEG  
 Operators:Alan Wang  
 Test Date:25 March 2020

γ Range: 0 - 180DEG  
 γ Interval: 0.5DEG  
 Test System:EVERFINE GO-R5000\_V2 SYSTEM V2.0.362  
 Humidity: 46.5%  
 Test Distance:2.500m [K=0.9942]  
 Remarks:

ISOLUX DIAGRAM

Test:U:120.0V I:0.2888A P:34.52W PF:0.9960 Freq:60.00Hz Lamp Flux:4387.57x1 lm		
NAME: ASD Lighting Corp	TYPE:LED	WEIGHT:
SPEC.:ASD-BLP-14A35AC-PRM(5000K)	DIM.:	SERIAL No.:
MFR.: ASD Lighting Corp	SUR.:	Shielding Angle:



C Range: 0 - 360DEG  
 C Interval: 5.0DEG  
 Test Speed: HIGH  
 Temperature: 25.1DEG  
 Operators: Alan Wang  
 Test Date: 25 March 2020

γ Range: 0 - 180DEG  
 γ Interval: 0.5DEG  
 Test System: EVERFINE GO-R5000\_V2 SYSTEM V2.0.362  
 Humidity: 46.5%  
 Test Distance: 2.500m [K=0.9942]  
 Remarks:

## LED Avg.L Report

Test:U:120.0V I:0.2888A P:34.52W PF:0.9960 Freq:60.00Hz Lamp Flux:4387.57x1 lm		
NAME: ASD Lighting Corp	TYPE:LED	WEIGHT:
SPEC.:ASD-BLP-14A35AC-PRM(5000K)	DIM.:	SERIAL No.:
MFR.: ASD Lighting Corp	SUR.:	Shielding Angle:

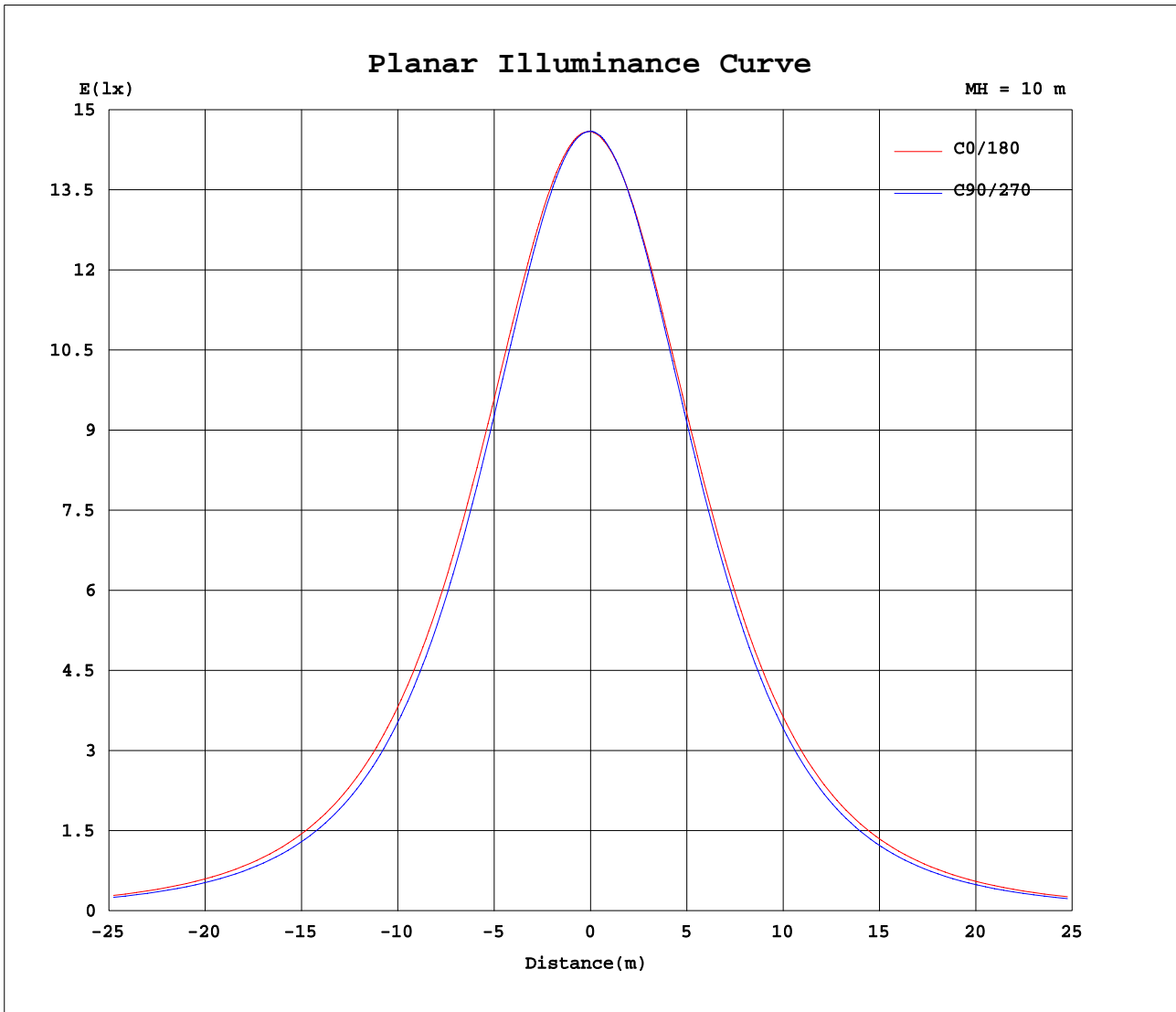
AvgL	cd/m2
L_0~180(65)av	3967
L_0~180(75)av	3655
L_0~180(85)av	2791
L_90~270(65)av	3495
L_90~270(75)av	3137
L_90~270(85)av	2513
L_45(65)av	3715
L_45(75)av	3379
L_45(85)av	2663

Standard: GB/T 29293-2012

C Range: 0 - 360DEG  
C Interval: 5.0DEG  
Test Speed: HIGH  
Temperature: 25.1DEG  
Operators:Alan Wang  
Test Date:25 March 2020

$\gamma$  Range: 0 - 180DEG  
 $\gamma$  Interval: 0.5DEG  
Test System:EVERFINE GO-R5000\_V2 SYSTEM V2.0.362  
Humidity: 46.5%  
Test Distance:2.500m [K=0.9942]  
Remarks:

Planar Illuminance Curve



C Range: 0 - 360DEG  
C Interval: 5.0DEG  
Test Speed: HIGH  
Temperature: 25.1DEG  
Operators: Alan Wang  
Test Date: 25 March 2020

$\gamma$  Range: 0 - 180DEG  
 $\gamma$  Interval: 0.5DEG  
Test System: EVERFINE GO-R5000\_V2 SYSTEM V2.0.362  
Humidity: 46.5%  
Test Distance: 2.500m [K=0.9942]  
Remarks:

LUMINOUS DISTRIBUTION INTENSITY DATA

Test:U:120.0V I:0.2888A P:34.52W PF:0.9960 Freq:60.00Hz Lamp Flux:4387.57x1 lm		
NAME: ASD Lighting Corp	TYPE:LED	WEIGHT:
SPEC.:ASD-BLP-14A35AC-PRM(5000K)	DIM.:	SERIAL No.:
MFR.: ASD Lighting Corp	SUR.:	Shielding Angle:

Table--1

UNIT: cd

C(DEG) γ (DEG)	0	5	10	15	20	25	30	35	40	45	50	55	60	65	70	75	80	85	90
0	1460	1460	1460	1460	1460	1460	1460	1460	1460	1460	1460	1460	1460	1460	1460	1460	1460	1460	1460
5	1459	1459	1459	1459	1459	1459	1459	1459	1458	1458	1458	1458	1458	1457	1457	1456	1456	1456	1456
10	1448	1448	1448	1449	1449	1449	1448	1447	1447	1447	1446	1445	1444	1443	1442	1442	1441	1440	1438
15	1427	1427	1428	1429	1429	1428	1426	1425	1424	1423	1422	1420	1419	1417	1416	1414	1413	1411	1410
20	1397	1397	1398	1399	1399	1397	1395	1393	1391	1390	1387	1385	1382	1379	1378	1376	1373	1371	1368
25	1355	1356	1357	1359	1357	1354	1351	1349	1346	1344	1341	1337	1333	1330	1328	1325	1322	1319	1315
30	1303	1305	1306	1308	1306	1301	1297	1294	1291	1288	1283	1278	1273	1270	1266	1263	1259	1255	1252
35	1241	1242	1244	1246	1243	1237	1232	1228	1225	1221	1215	1209	1203	1198	1194	1190	1186	1181	1177
40	1166	1168	1170	1172	1168	1162	1156	1151	1147	1142	1135	1128	1121	1116	1112	1107	1102	1097	1093
45	1080	1082	1085	1088	1083	1075	1068	1063	1059	1054	1046	1038	1030	1025	1020	1015	1009	1004	999
50	983	985	989	991	986	978	971	965	960	954	947	938	930	924	919	914	908	903	897
55	874	878	881	884	878	870	863	857	852	847	839	830	821	816	811	805	799	794	788
60	756	759	764	768	761	754	746	741	736	731	723	714	706	701	695	690	685	679	673
65	628	633	638	643	636	629	622	617	613	609	601	593	585	581	576	571	566	560	554
70	495	500	506	511	506	499	492	489	486	483	476	469	462	458	454	450	444	439	433
75	359	365	372	377	373	367	361	359	358	356	350	344	338	335	332	329	324	319	314
80	226	232	239	245	242	238	233	233	233	233	229	224	220	218	216	213	209	205	201
85	98.8	105	112	118	116	114	112	113	115	116	114	112	110	109	108	107	104	101	97.9
90	5.46	6.46	8.27	10.9	12.4	13.1	13.0	13.1	13.6	14.5	12.9	10.9	7.33	10.6	13.4	16.5	13.1	9.45	5.66
95	0.06	0.06	0.05	0.05	0.05	0.06	0.06	0.05	0.05	0.05	0.05	0.04	0.04	0.04	0.04	0.04	0.04	0.04	0.04
100	0.10	0.09	0.09	0.09	0.09	0.09	0.09	0.09	0.09	0.09	0.09	0.09	0.10	0.09	0.09	0.09	0.09	0.09	0.09
105	0.13	0.13	0.13	0.12	0.12	0.12	0.12	0.12	0.12	0.12	0.12	0.12	0.12	0.12	0.12	0.12	0.12	0.12	0.12
110	0.17	0.17	0.16	0.16	0.15	0.15	0.14	0.14	0.14	0.14	0.14	0.14	0.15	0.15	0.15	0.15	0.15	0.15	0.16
115	0.25	0.23	0.22	0.21	0.20	0.19	0.19	0.18	0.18	0.17	0.17	0.17	0.17	0.18	0.18	0.19	0.19	0.20	0.20
120	0.34	0.32	0.30	0.29	0.28	0.27	0.26	0.25	0.24	0.23	0.23	0.23	0.23	0.24	0.24	0.25	0.25	0.26	0.26
125	0.41	0.40	0.38	0.37	0.35	0.34	0.33	0.32	0.31	0.30	0.30	0.30	0.30	0.30	0.31	0.31	0.31	0.32	0.33
130	0.48	0.47	0.45	0.44	0.43	0.42	0.41	0.39	0.37	0.36	0.37	0.37	0.38	0.38	0.38	0.38	0.38	0.39	0.40
135	0.54	0.53	0.51	0.50	0.49	0.48	0.46	0.45	0.43	0.42	0.42	0.42	0.43	0.44	0.45	0.45	0.46	0.46	0.47
140	0.57	0.56	0.56	0.55	0.54	0.52	0.51	0.51	0.51	0.50	0.49	0.48	0.48	0.49	0.49	0.50	0.50	0.51	0.51
145	0.61	0.61	0.61	0.60	0.59	0.57	0.56	0.54	0.53	0.52	0.52	0.52	0.52	0.53	0.54	0.54	0.55	0.55	0.55
150	0.64	0.64	0.64	0.64	0.63	0.62	0.60	0.58	0.56	0.54	0.53	0.52	0.52	0.53	0.54	0.55	0.56	0.56	0.56
155	0.70	0.70	0.70	0.70	0.70	0.70	0.69	0.65	0.62	0.59	0.58	0.57	0.56	0.57	0.58	0.60	0.59	0.59	0.59
160	0.78	0.77	0.77	0.76	0.76	0.75	0.74	0.71	0.69	0.66	0.64	0.62	0.60	0.61	0.62	0.62	0.61	0.61	0.60
165	0.84	0.84	0.83	0.83	0.82	0.81	0.79	0.78	0.76	0.74	0.72	0.69	0.68	0.67	0.67	0.67	0.67	0.66	0.66
170	0.92	0.91	0.91	0.90	0.90	0.89	0.87	0.86	0.84	0.82	0.79	0.77	0.76	0.76	0.76	0.76	0.76	0.75	0.75
175	0.99	0.99	0.98	0.98	0.97	0.96	0.94	0.93	0.90	0.88	0.85	0.83	0.82	0.81	0.81	0.81	0.80	0.80	0.79
180	0.91	0.91	0.91	0.91	0.91	0.91	0.91	0.91	0.91	0.91	0.91	0.91	0.91	0.91	0.91	0.91	0.91	0.91	0.91

C Range: 0 - 360DEG  
 C Interval: 5.0DEG  
 Test Speed: HIGH  
 Temperature: 25.1DEG  
 Operators: Alan Wang  
 Test Date: 25 March 2020

γ Range: 0 - 180DEG  
 γ Interval: 0.5DEG  
 Test System: EVERFINE GO-R5000\_V2 SYSTEM V2.0.362  
 Humidity: 46.5%  
 Test Distance: 2.500m [K=0.9942]  
 Remarks:

LUMINOUS DISTRIBUTION INTENSITY DATA

Test:U:120.0V I:0.2888A P:34.52W PF:0.9960 Freq:60.00Hz Lamp Flux:4387.57x1 lm		
NAME: ASD Lighting Corp	TYPE:LED	WEIGHT:
SPEC.:ASD-BLP-14A35AC-PRM(5000K)	DIM.:	SERIAL No.:
MFR.: ASD Lighting Corp	SUR.:	Shielding Angle:

Table--2

UNIT: cd

C(DEG) γ (DEG)	95	100	105	110	115	120	125	130	135	140	145	150	155	160	165	170	175	180	185
0	1460	1460	1460	1460	1460	1460	1460	1460	1460	1460	1460	1460	1460	1460	1460	1460	1460	1460	1460
5	1455	1455	1454	1453	1453	1453	1452	1452	1451	1451	1451	1451	1451	1451	1451	1451	1450	1450	1449
10	1438	1438	1437	1436	1435	1435	1434	1434	1434	1433	1433	1432	1432	1432	1432	1433	1433	1432	1431
15	1409	1409	1408	1407	1406	1405	1405	1405	1405	1404	1404	1404	1404	1404	1404	1405	1405	1404	1402
20	1368	1368	1367	1366	1365	1364	1365	1365	1366	1365	1365	1365	1365	1365	1366	1367	1367	1367	1364
25	1315	1315	1315	1314	1313	1313	1313	1314	1315	1315	1315	1315	1316	1317	1318	1319	1320	1319	1316
30	1252	1252	1252	1251	1250	1249	1251	1253	1254	1255	1255	1256	1257	1258	1259	1261	1262	1262	1257
35	1177	1177	1177	1177	1176	1176	1178	1180	1182	1183	1184	1186	1187	1189	1190	1192	1194	1194	1189
40	1093	1093	1094	1093	1092	1092	1095	1098	1101	1103	1104	1105	1107	1109	1111	1113	1115	1116	1109
45	999	1000	1000	1000	999	999	1003	1006	1009	1011	1013	1015	1017	1019	1022	1024	1026	1027	1020
50	898	898	899	898	898	898	901	905	909	911	913	915	917	919	922	925	927	928	920
55	788	789	790	789	789	788	792	796	800	802	803	805	808	810	812	815	818	819	811
60	674	674	675	674	673	673	676	680	684	685	687	688	691	693	695	698	701	703	694
65	555	555	556	555	554	553	556	559	562	564	565	566	567	569	571	574	577	579	570
70	434	434	435	433	432	430	433	436	438	439	439	439	441	442	443	446	449	451	442
75	315	315	315	314	312	310	312	313	315	315	314	313	314	314	315	317	320	322	313
80	201	201	201	199	196	194	195	195	195	194	192	191	190	189	188	190	192	194	187
85	97.7	97.4	96.8	94.4	91.7	88.9	87.9	86.8	85.4	82.8	80.0	77.1	75.4	73.6	72.1	73.5	75.0	76.3	70.8
90	3.88	2.17	0.56	3.18	5.80	7.95	5.29	2.55	0.37	2.00	3.14	4.00	2.28	0.95	0.03	0.12	0.18	0.22	0.24
95	0.04	0.05	0.05	0.05	0.05	0.05	0.05	0.06	0.06	0.06	0.06	0.07	0.07	0.07	0.07	0.14	0.22	0.30	0.30
100	0.10	0.10	0.10	0.10	0.10	0.10	0.10	0.10	0.10	0.11	0.11	0.11	0.11	0.11	0.11	0.19	0.28	0.37	0.37
105	0.13	0.13	0.13	0.14	0.14	0.14	0.14	0.15	0.15	0.15	0.15	0.15	0.15	0.15	0.16	0.24	0.32	0.41	0.41
110	0.16	0.17	0.17	0.18	0.18	0.19	0.19	0.19	0.19	0.20	0.20	0.20	0.20	0.20	0.21	0.27	0.33	0.40	0.40
115	0.21	0.22	0.23	0.23	0.24	0.24	0.24	0.25	0.25	0.25	0.26	0.26	0.27	0.27	0.27	0.31	0.36	0.41	0.40
120	0.27	0.28	0.29	0.30	0.30	0.31	0.32	0.32	0.33	0.33	0.33	0.34	0.34	0.35	0.35	0.39	0.42	0.47	0.47
125	0.34	0.35	0.36	0.37	0.38	0.39	0.39	0.40	0.41	0.41	0.41	0.42	0.42	0.42	0.43	0.46	0.50	0.54	0.55
130	0.41	0.42	0.43	0.44	0.45	0.46	0.45	0.45	0.45	0.46	0.47	0.48	0.48	0.49	0.50	0.53	0.57	0.61	0.62
135	0.48	0.48	0.49	0.49	0.49	0.50	0.50	0.51	0.51	0.51	0.52	0.52	0.53	0.54	0.55	0.59	0.63	0.67	0.68
140	0.51	0.52	0.52	0.53	0.54	0.55	0.55	0.55	0.56	0.55	0.55	0.55	0.56	0.58	0.60	0.63	0.67	0.72	0.74
145	0.55	0.56	0.57	0.58	0.58	0.59	0.59	0.58	0.58	0.58	0.58	0.58	0.59	0.61	0.62	0.67	0.72	0.78	0.81
150	0.57	0.57	0.58	0.59	0.60	0.60	0.60	0.60	0.60	0.60	0.61	0.62	0.63	0.64	0.65	0.70	0.77	0.86	0.88
155	0.60	0.61	0.62	0.63	0.64	0.65	0.65	0.65	0.65	0.66	0.67	0.69	0.69	0.69	0.69	0.73	0.81	0.90	0.93
160	0.62	0.64	0.66	0.68	0.69	0.70	0.71	0.72	0.72	0.73	0.73	0.74	0.74	0.75	0.76	0.80	0.88	1.00	1.01
165	0.68	0.70	0.72	0.74	0.76	0.77	0.78	0.79	0.79	0.79	0.80	0.80	0.80	0.81	0.82	0.85	0.91	1.01	1.02
170	0.76	0.77	0.78	0.80	0.81	0.83	0.84	0.84	0.84	0.84	0.85	0.85	0.85	0.86	0.87	0.89	0.93	1.01	1.03
175	0.80	0.81	0.82	0.83	0.84	0.86	0.86	0.87	0.87	0.86	0.87	0.87	0.88	0.90	0.91	0.93	0.95	1.04	1.04
180	0.91	0.91	0.91	0.91	0.91	0.91	0.91	0.91	0.91	0.91	0.91	0.91	0.91	0.91	0.91	0.91	0.91	1.10	1.10

C Range: 0 - 360DEG  
 C Interval: 5.0DEG  
 Test Speed: HIGH  
 Temperature: 25.1DEG  
 Operators: Alan Wang  
 Test Date: 25 March 2020

γ Range: 0 - 180DEG  
 γ Interval: 0.5DEG  
 Test System: EVERFINE GO-R5000\_V2 SYSTEM V2.0.362  
 Humidity: 46.5%  
 Test Distance: 2.500m [K=0.9942]  
 Remarks:

LUMINOUS DISTRIBUTION INTENSITY DATA

Test:U:120.0V I:0.2888A P:34.52W PF:0.9960 Freq:60.00Hz Lamp Flux:4387.57x1 lm		
NAME: ASD Lighting Corp	TYPE:LED	WEIGHT:
SPEC.:ASD-BLP-14A35AC-PRM(5000K)	DIM.:	SERIAL No.:
MFR.: ASD Lighting Corp	SUR.:	Shielding Angle:

Table--3

UNIT: cd

C(DEG) γ (DEG)	190	195	200	205	210	215	220	225	230	235	240	245	250	255	260	265	270	275	280
0	1460	1460	1460	1460	1460	1460	1460	1460	1460	1460	1460	1460	1460	1460	1460	1460	1460	1460	1460
5	1449	1449	1450	1449	1449	1449	1449	1449	1449	1449	1449	1449	1449	1450	1450	1451	1451	1452	1452
10	1430	1430	1430	1430	1429	1428	1427	1427	1427	1427	1428	1428	1428	1428	1429	1430	1431	1432	1432
15	1400	1399	1399	1400	1399	1397	1396	1395	1395	1395	1394	1394	1394	1394	1395	1397	1398	1399	1400
20	1361	1360	1359	1359	1358	1355	1353	1351	1351	1350	1350	1349	1349	1348	1350	1351	1353	1355	1356
25	1312	1310	1309	1308	1307	1303	1300	1297	1296	1295	1294	1293	1291	1291	1293	1295	1297	1299	1301
30	1253	1250	1248	1247	1245	1241	1236	1232	1231	1229	1227	1226	1224	1223	1225	1227	1230	1232	1234
35	1183	1179	1178	1176	1173	1168	1162	1157	1154	1152	1150	1148	1146	1144	1146	1149	1151	1154	1156
40	1103	1098	1096	1094	1091	1084	1078	1072	1068	1065	1063	1060	1057	1056	1058	1061	1063	1066	1069
45	1013	1007	1005	1002	999	991	984	977	973	970	966	963	960	958	961	963	966	969	972
50	913	906	903	900	897	889	880	873	869	865	861	858	855	852	855	858	860	863	866
55	803	796	793	790	787	778	769	761	757	753	750	746	742	740	742	745	748	751	754
60	686	678	675	672	669	660	652	643	639	636	632	628	625	622	624	628	631	633	636
65	561	553	551	549	546	537	529	521	517	514	511	507	504	501	504	507	510	512	514
70	434	426	424	422	420	412	405	397	394	391	389	386	383	380	383	385	388	390	392
75	305	298	297	296	295	289	282	276	273	271	270	267	265	262	265	268	270	271	273
80	180	174	174	174	174	169	164	160	159	157	156	155	153	152	154	156	158	159	160
85	65.2	60.1	60.7	61.8	62.8	60.1	57.3	54.8	54.8	55.2	55.8	55.0	54.5	54.1	55.9	57.8	59.8	59.9	60.0
90	0.25	0.27	0.25	0.23	0.22	0.93	1.46	1.74	1.03	0.58	0.21	0.53	0.64	0.72	0.45	0.29	0.13	0.22	0.26
95	0.31	0.31	0.31	0.31	0.31	0.31	0.31	0.31	0.30	0.30	0.29	0.29	0.28	0.28	0.28	0.28	0.28	0.28	0.27
100	0.37	0.37	0.37	0.38	0.38	0.38	0.38	0.38	0.38	0.38	0.38	0.37	0.37	0.37	0.36	0.36	0.36	0.36	0.36
105	0.41	0.41	0.41	0.41	0.41	0.41	0.42	0.42	0.42	0.42	0.42	0.42	0.42	0.41	0.41	0.41	0.41	0.41	0.41
110	0.40	0.40	0.40	0.40	0.41	0.41	0.42	0.42	0.42	0.42	0.42	0.42	0.42	0.41	0.41	0.41	0.41	0.41	0.41
115	0.40	0.40	0.41	0.41	0.41	0.41	0.41	0.41	0.41	0.41	0.41	0.41	0.41	0.41	0.41	0.41	0.41	0.41	0.41
120	0.47	0.48	0.47	0.47	0.46	0.46	0.46	0.46	0.46	0.45	0.44	0.44	0.43	0.43	0.43	0.43	0.43	0.43	0.43
125	0.56	0.56	0.56	0.56	0.55	0.55	0.56	0.56	0.55	0.54	0.53	0.53	0.52	0.52	0.52	0.52	0.52	0.51	0.51
130	0.63	0.64	0.65	0.65	0.65	0.66	0.66	0.67	0.66	0.66	0.66	0.66	0.65	0.65	0.64	0.64	0.64	0.63	0.62
135	0.70	0.71	0.72	0.72	0.73	0.74	0.75	0.75	0.76	0.76	0.76	0.75	0.75	0.74	0.74	0.74	0.73	0.72	0.71
140	0.76	0.77	0.78	0.78	0.79	0.80	0.81	0.83	0.83	0.83	0.82	0.82	0.82	0.81	0.81	0.81	0.80	0.79	0.78
145	0.83	0.86	0.86	0.86	0.86	0.87	0.88	0.89	0.90	0.90	0.91	0.90	0.90	0.90	0.90	0.90	0.90	0.89	0.89
150	0.91	0.93	0.93	0.92	0.92	0.93	0.94	0.96	0.96	0.96	0.96	0.96	0.96	0.96	0.96	0.96	0.96	0.96	0.96
155	0.95	0.98	1.00	1.02	1.03	1.04	1.04	1.04	1.04	1.03	1.02	1.02	1.02	1.02	1.01	1.01	1.01	1.01	1.02
160	1.02	1.04	1.06	1.08	1.10	1.11	1.12	1.13	1.12	1.10	1.08	1.07	1.06	1.06	1.05	1.05	1.04	1.04	1.04
165	1.04	1.05	1.07	1.09	1.12	1.14	1.16	1.18	1.18	1.17	1.16	1.14	1.13	1.11	1.10	1.09	1.09	1.09	1.09
170	1.04	1.05	1.06	1.07	1.09	1.10	1.11	1.13	1.14	1.14	1.14	1.13	1.11	1.09	1.08	1.08	1.08	1.08	1.08
175	1.04	1.05	1.05	1.05	1.05	1.05	1.05	1.05	1.05	1.04	1.04	1.04	1.02	1.01	1.00	0.99	0.98	0.98	0.98
180	1.10	1.10	1.10	1.10	1.10	1.10	1.10	1.10	1.10	1.10	1.10	1.10	1.10	1.10	1.10	1.10	1.10	1.10	1.10

C Range: 0 - 360DEG  
 C Interval: 5.0DEG  
 Test Speed: HIGH  
 Temperature: 25.1DEG  
 Operators: Alan Wang  
 Test Date: 25 March 2020

γ Range: 0 - 180DEG  
 γ Interval: 0.5DEG  
 Test System: EVERFINE GO-R5000\_V2 SYSTEM V2.0.362  
 Humidity: 46.5%  
 Test Distance: 2.500m [K=0.9942]  
 Remarks:

LUMINOUS DISTRIBUTION INTENSITY DATA

Test:U:120.0V I:0.2888A P:34.52W PF:0.9960 Freq:60.00Hz Lamp Flux:4387.57x1 lm		
NAME: ASD Lighting Corp	TYPE:LED	WEIGHT:
SPEC.:ASD-BLP-14A35AC-PRM(5000K)	DIM.:	SERIAL No.:
MFR.: ASD Lighting Corp	SUR.:	Shielding Angle:

Table--4

UNIT: cd

C( DEG) γ (DEG)	285	290	295	300	305	310	315	320	325	330	335	340	345	350	355				
0	1460	1460	1460	1460	1460	1460	1460	1460	1460	1460	1460	1460	1460	1460	1460				
5	1452	1453	1453	1454	1454	1455	1455	1455	1456	1456	1457	1458	1458	1458	1458				
10	1433	1434	1435	1437	1438	1439	1440	1441	1443	1444	1445	1446	1447	1448	1448				
15	1401	1403	1406	1408	1410	1412	1414	1416	1419	1421	1423	1425	1426	1427	1427				
20	1358	1361	1364	1368	1371	1374	1377	1380	1384	1388	1391	1393	1395	1396	1396				
25	1302	1307	1312	1317	1321	1325	1329	1333	1339	1344	1347	1350	1353	1355	1355				
30	1236	1242	1248	1254	1259	1264	1270	1276	1282	1288	1293	1297	1301	1303	1303				
35	1159	1166	1173	1180	1186	1193	1199	1207	1214	1222	1228	1233	1238	1240	1240				
40	1072	1079	1087	1096	1103	1110	1118	1127	1136	1145	1152	1157	1163	1165	1165				
45	975	983	992	1001	1009	1018	1026	1036	1046	1056	1064	1070	1077	1079	1079				
50	869	878	888	898	906	915	924	935	946	957	965	972	979	981	982				
55	757	766	776	786	795	804	813	824	836	847	856	863	871	873	874				
60	639	648	657	667	676	685	694	705	717	729	737	745	752	754	755				
65	517	525	534	543	552	560	569	580	591	603	611	618	626	627	628				
70	394	401	410	418	425	433	440	451	461	472	479	487	494	495	495				
75	274	281	287	295	300	306	312	321	331	340	346	353	359	359	359				
80	161	166	171	177	181	185	190	197	204	211	216	221	226	226	226				
85	60.4	63.6	67.0	70.6	72.9	75.3	78.0	82.1	86.4	90.9	94.3	97.8	101	101	99.8				
90	0.34	0.32	0.29	0.21	1.90	3.73	5.73	4.28	2.71	1.02	4.05	7.32	10.8	9.07	7.28				
95	0.27	0.27	0.27	0.27	0.27	0.27	0.27	0.27	0.27	0.27	0.27	0.27	0.26	0.20	0.13				
100	0.36	0.36	0.36	0.36	0.36	0.36	0.36	0.35	0.35	0.35	0.34	0.34	0.33	0.25	0.17				
105	0.41	0.41	0.41	0.41	0.41	0.40	0.40	0.40	0.39	0.39	0.39	0.38	0.37	0.29	0.21				
110	0.41	0.41	0.41	0.41	0.41	0.40	0.40	0.40	0.39	0.38	0.38	0.38	0.38	0.31	0.24				
115	0.41	0.41	0.41	0.41	0.40	0.40	0.40	0.39	0.39	0.39	0.39	0.39	0.38	0.34	0.29				
120	0.43	0.43	0.43	0.43	0.43	0.43	0.43	0.43	0.43	0.43	0.44	0.44	0.44	0.41	0.37				
125	0.51	0.50	0.50	0.49	0.49	0.49	0.50	0.50	0.50	0.50	0.50	0.51	0.51	0.48	0.44				
130	0.62	0.61	0.60	0.59	0.58	0.57	0.57	0.57	0.58	0.58	0.58	0.58	0.58	0.54	0.51				
135	0.70	0.69	0.68	0.67	0.66	0.66	0.65	0.65	0.65	0.65	0.65	0.66	0.65	0.61	0.57				
140	0.76	0.77	0.77	0.77	0.76	0.76	0.75	0.74	0.73	0.73	0.73	0.73	0.72	0.67	0.61				
145	0.88	0.88	0.87	0.87	0.86	0.85	0.84	0.83	0.81	0.81	0.81	0.81	0.79	0.72	0.66				
150	0.96	0.95	0.94	0.94	0.93	0.92	0.91	0.91	0.90	0.89	0.89	0.88	0.86	0.78	0.70				
155	1.02	1.01	1.00	0.99	0.98	0.98	0.98	0.99	1.00	0.99	0.97	0.94	0.89	0.82	0.74				
160	1.04	1.04	1.03	1.03	1.04	1.05	1.05	1.05	1.05	1.04	1.03	1.01	0.96	0.89	0.82				
165	1.08	1.08	1.07	1.07	1.07	1.07	1.07	1.06	1.05	1.04	1.02	1.00	0.97	0.91	0.86				
170	1.07	1.05	1.03	1.03	1.04	1.04	1.04	1.04	1.03	1.02	1.02	1.00	0.97	0.94	0.91				
175	0.98	0.97	0.97	0.97	0.98	0.99	0.99	0.99	0.99	1.00	1.00	1.00	0.99	0.99	0.98				
180	1.10	1.10	1.10	1.10	1.10	1.10	1.10	1.10	1.10	1.10	1.10	1.10	1.10	1.10	1.10				

C Range: 0 - 360DEG  
 C Interval: 5.0DEG  
 Test Speed: HIGH  
 Temperature: 25.1DEG  
 Operators: Alan Wang  
 Test Date: 25 March 2020

γ Range: 0 - 180DEG  
 γ Interval: 0.5DEG  
 Test System: EVERFINE GO-R5000\_V2 SYSTEM V2.0.362  
 Humidity: 46.5%  
 Test Distance: 2.500m [K=0.9942]  
 Remarks:



Photometric Data Table [cd]

G/C	0.0	5.0	10.0	15.0	20.0	25.0	30.0	35.0	40.0	45.0
0.0	1460	1460	1460	1460	1460	1460	1460	1460	1460	1460
2.5	1460	1460	1460	1460	1460	1460	1460	1460	1460	1460
5.0	1459	1459	1459	1459	1459	1459	1459	1459	1458	1458
7.5	1454	1454	1454	1455	1455	1455	1455	1454	1454	1454
10.0	1448	1448	1448	1448	1449	1449	1449	1448	1447	1447
12.5	1439	1439	1440	1440	1440	1440	1439	1438	1437	1437
15.0	1427	1427	1428	1429	1429	1428	1426	1425	1424	1423
17.5	1413	1413	1414	1415	1415	1414	1412	1411	1409	1408
20.0	1397	1397	1398	1399	1399	1397	1395	1393	1391	1390
22.5	1377	1378	1379	1380	1380	1377	1374	1372	1370	1368
25.0	1355	1356	1357	1359	1357	1354	1351	1349	1346	1344
27.5	1331	1332	1333	1335	1333	1329	1326	1323	1320	1318
30.0	1303	1305	1306	1308	1306	1301	1297	1294	1291	1288
32.5	1273	1275	1277	1278	1276	1271	1266	1263	1259	1255
35.0	1241	1242	1244	1246	1243	1237	1232	1228	1225	1221
37.5	1205	1206	1208	1210	1207	1201	1195	1191	1187	1183
40.0	1166	1168	1170	1172	1168	1162	1156	1151	1147	1142
42.5	1124	1126	1129	1131	1127	1120	1114	1109	1104	1099
45.0	1080	1082	1085	1088	1083	1075	1068	1063	1059	1054
47.5	1033	1035	1038	1041	1035	1028	1021	1015	1010	1005
50.0	982.8	985.4	988.6	991.5	985.9	978.4	970.8	965.2	960.0	954.5
52.5	929.7	932.7	936.1	939.1	933.4	925.7	917.9	912.4	907.3	902.0
55.0	874.3	877.5	881.2	884.4	878.3	870.5	862.5	857.1	852.1	846.8
57.5	816.1	819.6	823.5	827.1	820.9	813.1	805.2	799.9	794.9	789.7
60.0	755.8	759.5	763.8	767.7	761.5	753.6	745.7	740.6	735.9	730.9
62.5	692.8	697.1	701.8	706.0	699.8	691.9	684.1	679.4	675.1	670.6
65.0	628.4	632.9	637.8	642.6	636.4	629.0	621.5	617.2	613.2	608.9
67.5	562.1	567.0	572.3	577.1	571.3	564.1	556.9	553.3	549.9	546.1
70.0	494.9	500.2	505.8	511.1	505.5	498.7	491.9	488.8	485.9	482.6
72.5	427.5	433.0	438.9	444.3	439.2	432.9	426.6	424.1	421.7	419.1
75.0	359.4	365.4	371.5	377.4	372.6	366.9	361.2	359.4	357.8	356.0
77.5	292.3	298.5	304.9	310.9	306.7	301.6	296.5	295.5	294.7	293.6
80.0	225.8	232.2	238.8	245.1	241.7	237.6	233.3	233.1	233.0	232.6
82.5	161.0	167.3	173.7	179.6	177.3	174.4	171.4	171.9	172.5	172.9
85.0	98.80	105.3	111.8	117.9	116.3	114.1	111.9	113.4	114.9	116.1
87.5	42.29	48.60	54.83	60.64	59.78	58.46	57.23	59.32	61.40	63.23
90.0	5.460	6.463	8.268	10.86	12.39	13.11	13.05	13.09	13.59	14.52
92.5	0.0338	0.0329	0.0319	0.0361	0.2047	0.5002	0.6799	0.6409	0.4409	0.0377
95.0	0.0569	0.0556	0.0547	0.0539	0.0549	0.0556	0.0550	0.0513	0.0481	0.0455
97.5	0.0773	0.0756	0.0739	0.0725	0.0738	0.0755	0.0773	0.0787	0.0790	0.0789
100.0	0.0969	0.0943	0.0920	0.0900	0.0903	0.0908	0.0914	0.0923	0.0932	0.0942
102.5	0.1155	0.1126	0.1099	0.1073	0.1064	0.1056	0.1051	0.1054	0.1059	0.1065
105.0	0.1332	0.1303	0.1274	0.1245	0.1216	0.1189	0.1166	0.1171	0.1175	0.1181
107.5	0.1495	0.1466	0.1436	0.1405	0.1360	0.1315	0.1275	0.1280	0.1288	0.1298
110.0	0.1736	0.1687	0.1641	0.1594	0.1536	0.1480	0.1428	0.1410	0.1394	0.1384
112.5	0.2068	0.1983	0.1902	0.1826	0.1759	0.1692	0.1626	0.1575	0.1528	0.1489
115.0	0.2498	0.2345	0.2198	0.2062	0.1996	0.1934	0.1873	0.1816	0.1760	0.1712
117.5	0.2906	0.2756	0.2604	0.2460	0.2371	0.2287	0.2206	0.2129	0.2053	0.1987
120.0	0.3350	0.3192	0.3036	0.2887	0.2779	0.2674	0.2571	0.2469	0.2370	0.2285
122.5	0.3781	0.3616	0.3451	0.3294	0.3171	0.3050	0.2931	0.2818	0.2707	0.2611
125.0	0.4142	0.3993	0.3844	0.3692	0.3539	0.3390	0.3254	0.3167	0.3082	0.3007
127.5	0.4472	0.4342	0.4211	0.4078	0.3932	0.3784	0.3640	0.3524	0.3415	0.3329
130.0	0.4798	0.4671	0.4539	0.4413	0.4299	0.4184	0.4059	0.3893	0.3731	0.3606
132.5	0.5144	0.5016	0.4891	0.4765	0.4635	0.4508	0.4369	0.4177	0.3985	0.3836
135.0	0.5362	0.5254	0.5147	0.5034	0.4905	0.4776	0.4639	0.4467	0.4293	0.4153
137.5	0.5519	0.5434	0.5348	0.5255	0.5138	0.5021	0.4911	0.4822	0.4730	0.4639
140.0	0.5704	0.5646	0.5583	0.5500	0.5371	0.5241	0.5134	0.5094	0.5059	0.5013
142.5	0.5881	0.5872	0.5860	0.5806	0.5654	0.5499	0.5362	0.5282	0.5208	0.5145
145.0	0.6066	0.6074	0.6080	0.6038	0.5885	0.5724	0.5571	0.5442	0.5321	0.5228
147.5	0.6245	0.6250	0.6255	0.6214	0.6081	0.5942	0.5794	0.5625	0.5459	0.5322
150.0	0.6431	0.6432	0.6421	0.6386	0.6288	0.6185	0.6046	0.5835	0.5624	0.5441
152.5	0.6733	0.6713	0.6692	0.6666	0.6633	0.6586	0.6457	0.6178	0.5897	0.5657
155.0	0.6957	0.6957	0.6952	0.6963	0.6994	0.7013	0.6892	0.6549	0.6203	0.5926
157.5	0.7356	0.7324	0.7296	0.7290	0.7310	0.7323	0.7191	0.6871	0.6534	0.6255
160.0	0.7771	0.7718	0.7675	0.7628	0.7576	0.7519	0.7379	0.7142	0.6893	0.6646
162.5	0.8023	0.7971	0.7918	0.7851	0.7776	0.7698	0.7572	0.7407	0.7234	0.7021
165.0	0.8433	0.8392	0.8346	0.8274	0.8184	0.8089	0.7950	0.7786	0.7613	0.7400
167.5	0.8912	0.8859	0.8804	0.8735	0.8658	0.8570	0.8434	0.8278	0.8113	0.7892
170.0	0.9158	0.9147	0.9115	0.9048	0.8968	0.8873	0.8744	0.8601	0.8439	0.8198
172.5	0.9268	0.9245	0.9201	0.9133	0.9042	0.8940	0.8813	0.8675	0.8492	0.8211
175.0	0.9903	0.9868	0.9816	0.9752	0.9672	0.9571	0.9439	0.9272	0.9040	0.8767
177.5	1.008	1.002	0.9963	0.9892	0.9806	0.9704	0.9575	0.9423	0.9244	0.9078
180.0	0.9137	0.9137	0.9137	0.9137	0.9137	0.9137	0.9137	0.9137	0.9137	0.9137

C Range: 0 - 360DEG  
 C Interval: 5.0DEG  
 Test Speed: HIGH  
 Temperature: 25.1DEG  
 Operators: Alan Wang  
 Test Date: 25 March 2020

γ Range: 0 - 180DEG  
 γ Interval: 0.5DEG  
 Test System: EVERFINE GO-R5000\_V2 SYSTEM V2.0.362  
 Humidity: 46.5%  
 Test Distance: 2.500m [K=0.9942]  
 Remarks:

Photometric Data Table [cd]

G/C	50.0	55.0	60.0	65.0	70.0	75.0	80.0	85.0	90.0	95.0
0.0	1460	1460	1460	1460	1460	1460	1460	1460	1460	1460
2.5	1460	1460	1460	1460	1460	1459	1459	1459	1459	1459
5.0	1458	1458	1458	1458	1457	1456	1456	1456	1456	1455
7.5	1453	1453	1452	1452	1451	1451	1450	1449	1448	1448
10.0	1446	1445	1444	1444	1443	1442	1441	1440	1438	1438
12.5	1436	1434	1433	1432	1431	1430	1428	1427	1425	1425
15.0	1422	1420	1419	1417	1416	1414	1413	1411	1410	1409
17.5	1406	1404	1402	1400	1398	1397	1395	1393	1390	1390
20.0	1387	1385	1382	1379	1378	1376	1373	1371	1368	1368
22.5	1365	1362	1359	1356	1354	1352	1349	1346	1343	1343
25.0	1341	1337	1333	1330	1328	1325	1322	1319	1315	1315
27.5	1314	1309	1305	1301	1298	1295	1292	1288	1285	1285
30.0	1283	1278	1273	1270	1266	1263	1259	1255	1252	1252
32.5	1250	1245	1239	1235	1232	1228	1224	1220	1215	1216
35.0	1215	1209	1203	1198	1194	1190	1186	1181	1177	1177
37.5	1177	1170	1163	1159	1154	1150	1145	1141	1136	1136
40.0	1135	1128	1121	1116	1112	1107	1102	1097	1093	1093
42.5	1092	1084	1077	1072	1067	1062	1057	1052	1047	1047
45.0	1046	1038	1030	1025	1020	1015	1009	1004	999.0	999.5
47.5	997.5	989.3	981.1	975.7	970.5	965.3	959.9	954.3	948.7	949.5
50.0	946.6	938.1	929.5	924.1	919.0	913.8	908.4	902.8	897.3	897.7
52.5	894.0	885.3	876.7	871.0	865.6	860.2	854.6	848.9	843.0	843.8
55.0	838.6	829.9	821.2	815.7	810.5	805.3	799.5	793.6	787.5	788.4
57.5	781.5	772.8	764.0	758.7	753.6	748.4	742.7	736.8	730.8	731.6
60.0	722.9	714.3	705.7	700.6	695.5	690.2	684.6	678.8	673.0	673.7
62.5	662.7	654.4	646.1	641.0	636.1	631.0	625.5	619.7	613.8	614.6
65.0	601.4	593.4	585.3	580.5	575.9	571.1	565.6	559.9	554.0	554.7
67.5	539.0	531.3	523.5	519.1	514.8	510.3	504.9	499.3	493.5	494.2
70.0	476.0	468.9	461.7	457.7	453.7	449.6	444.3	438.9	433.3	433.9
72.5	413.0	406.5	399.8	396.2	392.7	389.0	384.0	378.8	373.5	374.0
75.0	350.5	344.5	338.5	335.4	332.4	329.2	324.4	319.4	314.2	314.8
77.5	288.8	283.6	278.4	275.9	273.4	270.6	266.2	261.5	256.6	257.1
80.0	228.6	224.2	219.7	217.6	215.6	213.3	209.4	205.2	200.7	200.9
82.5	169.9	166.7	163.3	161.7	160.0	158.1	154.8	151.3	147.7	147.7
85.0	114.3	112.1	109.8	108.7	107.8	106.6	103.9	101.0	97.92	97.68
87.5	62.26	61.03	59.74	59.79	59.72	59.37	55.61	51.68	47.65	48.10
90.0	12.85	10.90	7.330	10.59	13.39	16.50	13.10	9.451	5.655	3.883
92.5	0.0372	0.0453	0.0649	0.0855	0.0470	0.0257	0.0260	0.0264	0.0268	0.0270
95.0	0.0451	0.0449	0.0448	0.0444	0.0440	0.0437	0.0438	0.0440	0.0442	0.0447
97.5	0.0755	0.0727	0.0698	0.0670	0.0641	0.0622	0.0629	0.0637	0.0647	0.0668
100.0	0.0946	0.0950	0.0952	0.0947	0.0940	0.0933	0.0936	0.0941	0.0948	0.0977
102.5	0.1079	0.1093	0.1105	0.1099	0.1092	0.1086	0.1092	0.1099	0.1107	0.1140
105.0	0.1203	0.1226	0.1247	0.1243	0.1237	0.1232	0.1238	0.1243	0.1248	0.1283
107.5	0.1326	0.1354	0.1381	0.1374	0.1366	0.1361	0.1377	0.1394	0.1412	0.1456
110.0	0.1416	0.1449	0.1480	0.1486	0.1492	0.1499	0.1524	0.1550	0.1575	0.1628
112.5	0.1527	0.1569	0.1610	0.1624	0.1638	0.1654	0.1695	0.1736	0.1779	0.1842
115.0	0.1718	0.1727	0.1741	0.1789	0.1838	0.1887	0.1935	0.1984	0.2035	0.2110
117.5	0.1986	0.1987	0.1993	0.2047	0.2104	0.2161	0.2211	0.2261	0.2313	0.2397
120.0	0.2292	0.2303	0.2318	0.2365	0.2416	0.2467	0.2509	0.2552	0.2593	0.2698
122.5	0.2629	0.2651	0.2676	0.2710	0.2747	0.2785	0.2832	0.2879	0.2929	0.3030
125.0	0.3015	0.3027	0.3040	0.3047	0.3055	0.3070	0.3130	0.3193	0.3256	0.3362
127.5	0.3360	0.3393	0.3419	0.3398	0.3377	0.3364	0.3438	0.3517	0.3595	0.3701
130.0	0.3666	0.3734	0.3793	0.3780	0.3766	0.3756	0.3829	0.3907	0.3980	0.4080
132.5	0.3907	0.3990	0.4069	0.4119	0.4167	0.4219	0.4285	0.4351	0.4422	0.4494
135.0	0.4180	0.4222	0.4273	0.4363	0.4454	0.4544	0.4594	0.4644	0.4702	0.4756
137.5	0.4578	0.4523	0.4493	0.4577	0.4668	0.4753	0.4791	0.4827	0.4864	0.4919
140.0	0.4929	0.4842	0.4780	0.4853	0.4934	0.5011	0.5033	0.5054	0.5076	0.5113
142.5	0.5116	0.5087	0.5072	0.5124	0.5182	0.5235	0.5254	0.5272	0.5291	0.5334
145.0	0.5221	0.5221	0.5234	0.5305	0.5378	0.5444	0.5455	0.5463	0.5469	0.5545
147.5	0.5265	0.5219	0.5205	0.5313	0.5426	0.5531	0.5564	0.5595	0.5627	0.5678
150.0	0.5322	0.5213	0.5153	0.5286	0.5423	0.5550	0.5582	0.5610	0.5639	0.5690
152.5	0.5495	0.5345	0.5264	0.5403	0.5557	0.5691	0.5702	0.5706	0.5710	0.5798
155.0	0.5785	0.5661	0.5602	0.5717	0.5849	0.5954	0.5933	0.5901	0.5873	0.5988
157.5	0.6075	0.5918	0.5834	0.5940	0.6059	0.6141	0.6084	0.6011	0.5937	0.6091
160.0	0.6410	0.6186	0.6046	0.6095	0.6160	0.6202	0.6140	0.6066	0.5989	0.6203
162.5	0.6765	0.6511	0.6344	0.6321	0.6314	0.6302	0.6255	0.6196	0.6140	0.6393
165.0	0.7150	0.6908	0.6756	0.6735	0.6731	0.6716	0.6682	0.6642	0.6602	0.6806
167.5	0.7642	0.7404	0.7275	0.7267	0.7279	0.7276	0.7229	0.7179	0.7129	0.7282
170.0	0.7926	0.7685	0.7580	0.7607	0.7644	0.7646	0.7597	0.7545	0.7488	0.7590
172.5	0.7902	0.7654	0.7579	0.7615	0.7670	0.7702	0.7685	0.7658	0.7633	0.7709
175.0	0.8495	0.8294	0.8181	0.8130	0.8092	0.8056	0.8020	0.7984	0.7946	0.8031
177.5	0.8937	0.8841	0.8792	0.8753	0.8730	0.8716	0.8706	0.8697	0.8694	0.8669
180.0	0.9137	0.9137	0.9137	0.9137	0.9137	0.9137	0.9137	0.9137	0.9137	0.9137

C Range: 0 - 360DEG  
 C Interval: 5.0DEG  
 Test Speed: HIGH  
 Temperature: 25.1DEG  
 Operators: Alan Wang  
 Test Date: 25 March 2020

γ Range: 0 - 180DEG  
 γ Interval: 0.5DEG  
 Test System: EVERFINE GO-R5000\_V2 SYSTEM V2.0.362  
 Humidity: 46.5%  
 Test Distance: 2.500m [K=0.9942]  
 Remarks:

Photometric Data Table [cd]

G/C	100.0	105.0	110.0	115.0	120.0	125.0	130.0	135.0	140.0	145.0
0.0	1460	1460	1460	1460	1460	1460	1460	1460	1460	1460
2.5	1458	1458	1458	1458	1457	1457	1457	1457	1457	1457
5.0	1455	1454	1453	1453	1453	1452	1452	1451	1451	1451
7.5	1448	1447	1446	1446	1445	1445	1444	1444	1444	1443
10.0	1438	1437	1436	1435	1435	1434	1434	1434	1433	1433
12.5	1425	1424	1423	1422	1421	1421	1421	1420	1420	1419
15.0	1409	1408	1407	1406	1405	1405	1405	1404	1404	1404
17.5	1389	1389	1388	1387	1386	1386	1386	1386	1386	1386
20.0	1368	1367	1366	1365	1364	1365	1365	1366	1365	1365
22.5	1343	1342	1341	1341	1340	1341	1341	1342	1342	1341
25.0	1315	1315	1314	1313	1313	1313	1314	1315	1315	1315
27.5	1285	1285	1284	1283	1282	1283	1285	1286	1286	1286
30.0	1252	1252	1251	1250	1249	1251	1253	1254	1255	1255
32.5	1216	1216	1215	1214	1214	1216	1218	1220	1220	1221
35.0	1177	1177	1177	1176	1176	1178	1180	1182	1183	1184
37.5	1137	1137	1136	1135	1135	1138	1140	1143	1144	1145
40.0	1093	1094	1093	1092	1092	1095	1098	1101	1103	1104
42.5	1048	1048	1047	1047	1047	1050	1053	1056	1058	1060
45.0	1000	1000	999.9	999.3	999.2	1003	1006	1009	1011	1013
47.5	950.2	950.7	950.2	949.7	949.6	953.2	956.8	960.1	962.1	963.9
50.0	898.4	898.7	898.2	897.8	897.6	901.4	905.2	908.6	910.7	912.6
52.5	844.5	844.9	844.5	843.9	843.8	847.6	851.5	855.0	857.0	858.8
55.0	789.1	789.6	789.2	788.6	788.4	792.3	796.2	799.8	801.7	803.4
57.5	732.2	732.6	732.1	731.4	731.0	734.9	738.8	742.4	744.2	745.9
60.0	674.3	674.7	674.0	673.3	672.7	676.5	680.3	683.7	685.4	686.8
62.5	615.2	615.6	614.9	613.9	613.2	616.7	620.3	623.5	625.0	626.3
65.0	555.3	555.7	554.7	553.6	552.6	555.9	559.3	562.3	563.5	564.5
67.5	494.8	495.2	494.1	492.8	491.7	494.8	497.8	500.4	501.3	501.9
70.0	434.4	434.6	433.3	431.9	430.5	433.2	435.9	438.3	438.8	439.1
72.5	374.4	374.5	373.0	371.3	369.7	372.1	374.5	376.5	376.5	376.3
75.0	315.2	315.4	313.6	311.6	309.7	311.6	313.5	315.1	314.6	313.9
77.5	257.4	257.4	255.4	253.2	251.1	252.4	253.7	254.8	253.7	252.5
80.0	200.9	200.5	198.7	196.5	194.3	194.9	195.3	195.5	194.0	192.3
82.5	147.5	147.1	145.0	142.7	140.3	140.0	139.7	139.1	137.0	134.6
85.0	97.36	96.84	94.36	91.66	88.93	87.89	86.77	85.41	82.81	79.97
87.5	48.40	48.48	44.88	41.02	36.82	36.88	37.15	37.05	33.25	29.38
90.0	2.171	0.5618	3.178	5.798	7.955	5.286	2.550	0.3712	2.004	3.138
92.5	0.0273	0.0276	0.0293	0.0313	0.0326	0.0335	0.0347	0.0360	0.0380	0.0400
95.0	0.0453	0.0461	0.0478	0.0496	0.0516	0.0538	0.0560	0.0584	0.0606	0.0629
97.5	0.0691	0.0714	0.0723	0.0733	0.0743	0.0768	0.0795	0.0821	0.0841	0.0861
100.0	0.1008	0.1037	0.1012	0.0983	0.0957	0.0987	0.1018	0.1048	0.1066	0.1083
102.5	0.1172	0.1204	0.1197	0.1190	0.1185	0.1212	0.1243	0.1274	0.1287	0.1298
105.0	0.1317	0.1349	0.1369	0.1390	0.1411	0.1433	0.1456	0.1478	0.1490	0.1501
107.5	0.1501	0.1546	0.1575	0.1603	0.1633	0.1655	0.1676	0.1697	0.1712	0.1727
110.0	0.1682	0.1735	0.1776	0.1815	0.1856	0.1885	0.1913	0.1943	0.1966	0.1989
112.5	0.1906	0.1969	0.2023	0.2077	0.2131	0.2156	0.2180	0.2205	0.2231	0.2257
115.0	0.2186	0.2263	0.2315	0.2366	0.2417	0.2448	0.2477	0.2508	0.2549	0.2591
117.5	0.2482	0.2567	0.2623	0.2679	0.2734	0.2773	0.2811	0.2850	0.2905	0.2962
120.0	0.2801	0.2905	0.2977	0.3048	0.3121	0.3167	0.3212	0.3258	0.3303	0.3349
122.5	0.3132	0.3235	0.3322	0.3407	0.3494	0.3567	0.3640	0.3715	0.3738	0.3755
125.0	0.3468	0.3573	0.3667	0.3760	0.3853	0.3933	0.4011	0.4085	0.4115	0.4141
127.5	0.3807	0.3914	0.4022	0.4133	0.4242	0.4274	0.4296	0.4316	0.4381	0.4456
130.0	0.4177	0.4276	0.4367	0.4461	0.4553	0.4549	0.4534	0.4524	0.4594	0.4679
132.5	0.4571	0.4646	0.4680	0.4715	0.4747	0.4749	0.4750	0.4754	0.4822	0.4903
135.0	0.4819	0.4881	0.4909	0.4938	0.4968	0.5013	0.5063	0.5114	0.5147	0.5174
137.5	0.4974	0.5029	0.5078	0.5128	0.5180	0.5254	0.5333	0.5409	0.5403	0.5373
140.0	0.5152	0.5194	0.5288	0.5389	0.5489	0.5525	0.5544	0.5559	0.5535	0.5503
142.5	0.5380	0.5429	0.5544	0.5666	0.5781	0.5763	0.5716	0.5666	0.5645	0.5632
145.0	0.5619	0.5693	0.5772	0.5850	0.5920	0.5884	0.5824	0.5767	0.5767	0.5784
147.5	0.5731	0.5784	0.5840	0.5895	0.5947	0.5935	0.5910	0.5889	0.5907	0.5940
150.0	0.5741	0.5796	0.5870	0.5954	0.6032	0.6036	0.6020	0.6006	0.6042	0.6100
152.5	0.5886	0.5977	0.6080	0.6186	0.6286	0.6286	0.6255	0.6230	0.6296	0.6404
155.0	0.6106	0.6224	0.6323	0.6418	0.6505	0.6512	0.6491	0.6480	0.6580	0.6737
157.5	0.6247	0.6398	0.6511	0.6614	0.6714	0.6762	0.6793	0.6830	0.6917	0.7031
160.0	0.6416	0.6620	0.6757	0.6878	0.6996	0.7084	0.7156	0.7228	0.7281	0.7322
162.5	0.6648	0.6893	0.7062	0.7215	0.7361	0.7446	0.7495	0.7539	0.7570	0.7592
165.0	0.7011	0.7210	0.7396	0.7574	0.7744	0.7832	0.7864	0.7890	0.7920	0.7953
167.5	0.7433	0.7594	0.7764	0.7943	0.8110	0.8208	0.8246	0.8271	0.8296	0.8320
170.0	0.7692	0.7806	0.7957	0.8124	0.8284	0.8382	0.8415	0.8432	0.8449	0.8473
172.5	0.7791	0.7882	0.7998	0.8145	0.8278	0.8367	0.8374	0.8353	0.8340	0.8363
175.0	0.8117	0.8212	0.8322	0.8446	0.8570	0.8649	0.8673	0.8657	0.8635	0.8658
177.5	0.8646	0.8643	0.8654	0.8682	0.8740	0.8797	0.8827	0.8830	0.8819	0.8805
180.0	0.9137	0.9137	0.9137	0.9137	0.9137	0.9137	0.9137	0.9137	0.9137	0.9137

C Range: 0 - 360DEG  
 C Interval: 5.0DEG  
 Test Speed: HIGH  
 Temperature: 25.1DEG  
 Operators: Alan Wang  
 Test Date: 25 March 2020

γ Range: 0 - 180DEG  
 γ Interval: 0.5DEG  
 Test System: EVERFINE GO-R5000\_V2 SYSTEM V2.0.362  
 Humidity: 46.5%  
 Test Distance: 2.500m [K=0.9942]  
 Remarks:

Photometric Data Table [cd]

G/C	150.0	155.0	160.0	165.0	170.0	175.0	180.0	185.0	190.0	195.0
0.0	1460	1460	1460	1460	1460	1460	1460	1460	1460	1460
2.5	1457	1457	1456	1456	1456	1456	1456	1456	1456	1456
5.0	1451	1451	1451	1451	1451	1450	1450	1449	1449	1449
7.5	1443	1443	1443	1443	1443	1443	1442	1441	1441	1441
10.0	1432	1432	1432	1432	1432	1433	1432	1431	1430	1430
12.5	1419	1419	1419	1420	1420	1420	1419	1417	1416	1416
15.0	1404	1404	1404	1404	1405	1405	1404	1402	1400	1399
17.5	1386	1386	1386	1386	1387	1388	1387	1384	1382	1381
20.0	1365	1365	1365	1366	1367	1367	1367	1364	1361	1360
22.5	1341	1342	1342	1343	1344	1345	1344	1341	1338	1336
25.0	1315	1316	1317	1318	1319	1320	1319	1316	1312	1310
27.5	1287	1288	1289	1290	1291	1292	1292	1288	1284	1281
30.0	1256	1257	1258	1259	1261	1262	1262	1257	1253	1250
32.5	1222	1223	1225	1226	1228	1229	1229	1224	1220	1216
35.0	1186	1187	1189	1190	1192	1194	1194	1189	1183	1179
37.5	1147	1149	1151	1152	1154	1156	1156	1150	1145	1140
40.0	1105	1107	1109	1111	1113	1115	1116	1109	1103	1098
42.5	1061	1063	1065	1067	1070	1072	1072	1066	1060	1054
45.0	1015	1017	1019	1022	1024	1026	1027	1020	1013	1007
47.5	965.7	968.2	970.6	973.0	975.5	977.9	978.6	971.4	964.2	957.9
50.0	914.6	917.0	919.5	921.9	924.5	927.1	928.0	920.3	912.8	906.0
52.5	860.7	863.2	865.7	868.3	871.0	873.8	874.9	867.0	859.2	852.2
55.0	805.2	807.6	810.0	812.5	815.3	818.1	819.3	811.2	803.1	795.9
57.5	747.5	749.9	752.3	754.7	757.5	760.4	761.8	753.4	745.1	737.6
60.0	688.3	690.6	692.9	695.3	698.1	701.0	702.6	694.0	685.6	677.8
62.5	627.6	629.7	631.8	633.9	636.8	639.7	641.4	632.7	624.0	616.1
65.0	565.5	567.4	569.2	571.0	573.9	576.8	578.6	569.9	561.2	553.3
67.5	502.5	504.2	505.8	507.5	510.3	513.1	514.9	506.3	497.7	489.8
70.0	439.4	440.7	442.0	443.3	446.1	448.8	450.7	442.1	433.5	425.6
72.5	376.0	377.0	377.9	378.9	381.5	384.2	386.1	377.7	369.3	361.7
75.0	313.2	313.8	314.3	314.8	317.3	319.7	321.7	313.5	305.4	297.9
77.5	251.2	251.3	251.3	251.4	253.6	255.8	257.6	249.9	242.2	235.2
80.0	190.6	189.8	189.1	188.4	190.3	192.3	193.7	187.0	180.2	173.9
82.5	132.3	131.1	129.8	128.8	130.4	132.2	133.7	127.3	121.0	115.2
85.0	77.08	75.36	73.64	72.06	73.49	74.99	76.33	70.78	65.23	60.10
87.5	24.12	23.93	22.34	20.37	22.50	24.94	27.43	21.95	16.68	12.13
90.0	4.003	2.280	0.9451	0.0252	0.1204	0.1844	0.2166	0.2373	0.2549	0.2693
92.5	0.0419	0.0434	0.0449	0.0493	0.1153	0.1852	0.2563	0.2611	0.2658	0.2702
95.0	0.0653	0.0666	0.0677	0.0722	0.1434	0.2194	0.2970	0.3029	0.3084	0.3135
97.5	0.0881	0.0889	0.0894	0.0936	0.1695	0.2515	0.3362	0.3393	0.3422	0.3449
100.0	0.1100	0.1100	0.1099	0.1126	0.1925	0.2779	0.3668	0.3681	0.3694	0.3706
102.5	0.1309	0.1311	0.1313	0.1344	0.2149	0.3019	0.3930	0.3931	0.3931	0.3932
105.0	0.1512	0.1523	0.1534	0.1558	0.2356	0.3204	0.4102	0.4081	0.4069	0.4057
107.5	0.1744	0.1759	0.1773	0.1813	0.2510	0.3269	0.4070	0.4063	0.4056	0.4051
110.0	0.2013	0.2024	0.2034	0.2064	0.2669	0.3332	0.4037	0.4026	0.4013	0.4000
112.5	0.2284	0.2299	0.2315	0.2349	0.2852	0.3406	0.4000	0.3992	0.3985	0.3978
115.0	0.2635	0.2661	0.2687	0.2723	0.3130	0.3575	0.4055	0.4048	0.4045	0.4041
117.5	0.3020	0.3053	0.3085	0.3127	0.3461	0.3837	0.4252	0.4281	0.4307	0.4331
120.0	0.3395	0.3431	0.3468	0.3513	0.3855	0.4242	0.4679	0.4703	0.4736	0.4766
122.5	0.3771	0.3809	0.3853	0.3907	0.4246	0.4635	0.5069	0.5120	0.5173	0.5225
125.0	0.4170	0.4203	0.4237	0.4283	0.4614	0.5003	0.5439	0.5505	0.5574	0.5640
127.5	0.4533	0.4571	0.4603	0.4647	0.4969	0.5348	0.5773	0.5862	0.5955	0.6046
130.0	0.4763	0.4832	0.4900	0.4980	0.5301	0.5678	0.6099	0.6213	0.6329	0.6444
132.5	0.4984	0.5078	0.5177	0.5285	0.5606	0.5981	0.6404	0.6537	0.6674	0.6810
135.0	0.5202	0.5297	0.5413	0.5537	0.5873	0.6266	0.6721	0.6848	0.6981	0.7110
137.5	0.5349	0.5463	0.5618	0.5786	0.6120	0.6507	0.6947	0.7097	0.7249	0.7400
140.0	0.5479	0.5609	0.5787	0.5977	0.6324	0.6732	0.7196	0.7377	0.7557	0.7734
142.5	0.5629	0.5752	0.5921	0.6101	0.6484	0.6957	0.7508	0.7717	0.7932	0.8139
145.0	0.5809	0.5922	0.6070	0.6236	0.6654	0.7192	0.7833	0.8076	0.8326	0.8566
147.5	0.5978	0.6085	0.6220	0.6373	0.6835	0.7456	0.8208	0.8463	0.8720	0.8964
150.0	0.6162	0.6256	0.6366	0.6490	0.7000	0.7713	0.8618	0.8833	0.9050	0.9258
152.5	0.6517	0.6579	0.6609	0.6662	0.7134	0.7881	0.8858	0.9056	0.9257	0.9453
155.0	0.6892	0.6935	0.6907	0.6912	0.7333	0.8072	0.9030	0.9277	0.9520	0.9759
157.5	0.7138	0.7204	0.7247	0.7328	0.7755	0.8498	0.9534	0.9754	0.9976	1.019
160.0	0.7362	0.7418	0.7491	0.7599	0.8019	0.8817	0.9994	1.012	1.025	1.039
162.5	0.7614	0.7662	0.7731	0.7836	0.8186	0.8898	0.9999	1.013	1.027	1.041
165.0	0.7991	0.8046	0.8133	0.8235	0.8520	0.9127	1.008	1.023	1.037	1.053
167.5	0.8348	0.8396	0.8487	0.8605	0.8827	0.9311	1.016	1.030	1.044	1.058
170.0	0.8498	0.8547	0.8633	0.8743	0.8929	0.9331	1.014	1.027	1.040	1.052
172.5	0.8404	0.8468	0.8559	0.8693	0.8877	0.9297	1.029	1.036	1.043	1.051
175.0	0.8731	0.8849	0.8967	0.9103	0.9259	0.9538	1.042	1.044	1.045	1.046
177.5	0.8822	0.8861	0.8942	0.9041	0.9250	0.9700	1.015	1.016	1.017	1.017
180.0	0.9137	0.9137	0.9137	0.9137	0.9137	0.9137	1.105	1.105	1.105	1.105

C Range: 0 - 360DEG  
 C Interval: 5.0DEG  
 Test Speed: HIGH  
 Temperature: 25.1DEG  
 Operators: Alan Wang  
 Test Date: 25 March 2020

γ Range: 0 - 180DEG  
 γ Interval: 0.5DEG  
 Test System: EVERFINE GO-R5000\_V2 SYSTEM V2.0.362  
 Humidity: 46.5%  
 Test Distance: 2.500m [K=0.9942]  
 Remarks:

Photometric Data Table [cd]

G/C	200.0	205.0	210.0	215.0	220.0	225.0	230.0	235.0	240.0	245.0
0.0	1460	1460	1460	1460	1460	1460	1460	1460	1460	1460
2.5	1456	1456	1455	1456	1456	1456	1456	1456	1456	1456
5.0	1450	1449	1449	1449	1449	1449	1449	1449	1449	1449
7.5	1441	1441	1440	1440	1439	1439	1440	1440	1440	1440
10.0	1430	1430	1429	1428	1427	1427	1427	1427	1428	1428
12.5	1416	1416	1415	1414	1413	1413	1413	1413	1413	1412
15.0	1399	1400	1399	1397	1396	1395	1395	1395	1394	1394
17.5	1381	1381	1380	1378	1376	1374	1374	1374	1374	1373
20.0	1359	1359	1358	1355	1353	1351	1351	1350	1350	1349
22.5	1335	1335	1333	1330	1328	1325	1325	1324	1323	1322
25.0	1309	1308	1307	1303	1300	1297	1296	1295	1294	1293
27.5	1280	1279	1277	1273	1269	1266	1265	1263	1262	1261
30.0	1248	1247	1245	1241	1236	1232	1231	1229	1227	1226
32.5	1214	1213	1210	1205	1200	1196	1194	1192	1190	1188
35.0	1178	1176	1173	1168	1162	1157	1154	1152	1150	1148
37.5	1138	1136	1133	1127	1121	1115	1113	1110	1108	1105
40.0	1096	1094	1091	1084	1078	1072	1068	1065	1063	1060
42.5	1052	1049	1046	1039	1032	1025	1022	1019	1016	1013
45.0	1005	1002	998.8	991.2	983.6	976.7	973.1	969.7	966.4	963.3
47.5	955.1	952.4	948.8	941.0	933.2	926.0	922.1	918.5	915.0	911.6
50.0	903.2	900.4	896.7	888.5	880.2	872.6	868.7	865.0	861.4	858.0
52.5	849.3	846.6	843.0	834.5	825.9	818.0	813.9	810.0	806.3	802.8
55.0	792.9	790.2	786.6	778.0	769.2	761.2	757.1	753.3	749.7	746.0
57.5	734.8	732.1	728.6	719.8	711.0	702.7	698.7	694.9	691.3	687.6
60.0	675.1	672.4	669.1	660.4	651.6	643.5	639.4	635.7	632.1	628.4
62.5	613.4	611.0	607.9	599.3	590.6	582.5	578.6	575.1	571.7	568.0
65.0	550.9	548.7	545.9	537.5	529.0	521.1	517.4	514.0	510.7	507.2
67.5	487.5	485.5	483.0	474.9	466.7	459.1	455.7	452.6	449.7	446.3
70.0	423.7	422.0	419.9	412.2	404.5	397.4	394.2	391.4	388.7	385.5
72.5	360.1	358.8	357.2	350.0	342.7	335.9	333.3	330.9	328.7	325.8
75.0	297.0	296.3	295.2	288.6	282.0	275.8	273.5	271.5	269.6	267.0
77.5	234.6	234.3	233.5	227.9	222.2	217.0	215.0	213.3	211.8	209.7
80.0	173.6	173.7	173.7	169.0	164.3	160.1	158.6	157.4	156.4	154.8
82.5	115.4	116.0	116.3	112.7	109.1	105.7	105.1	104.6	104.2	103.2
85.0	60.75	61.80	62.76	60.11	57.34	54.78	54.83	55.23	55.80	54.99
87.5	14.63	17.14	19.22	17.23	15.65	14.46	14.41	13.76	13.20	14.32
90.0	0.2505	0.2347	0.2220	0.2318	1.456	1.737	1.028	0.5822	0.2147	0.5297
92.5	0.2678	0.2648	0.2617	0.2623	0.2628	0.2632	0.2598	0.2563	0.2526	0.2506
95.0	0.3119	0.3102	0.3087	0.3080	0.3072	0.3062	0.3014	0.2960	0.2905	0.2882
97.5	0.3470	0.3490	0.3511	0.3514	0.3516	0.3518	0.3468	0.3416	0.3365	0.3331
100.0	0.3733	0.3762	0.3791	0.3811	0.3830	0.3847	0.3823	0.3798	0.3774	0.3736
102.5	0.3954	0.3978	0.4002	0.4032	0.4064	0.4093	0.4091	0.4087	0.4082	0.4053
105.0	0.4072	0.4091	0.4109	0.4149	0.4192	0.4234	0.4238	0.4238	0.4236	0.4207
107.5	0.4063	0.4077	0.4093	0.4141	0.4193	0.4243	0.4240	0.4232	0.4223	0.4206
110.0	0.4014	0.4033	0.4053	0.4101	0.4152	0.4200	0.4191	0.4178	0.4164	0.4159
112.5	0.4000	0.4026	0.4052	0.4087	0.4123	0.4155	0.4147	0.4136	0.4124	0.4116
115.0	0.4057	0.4076	0.4092	0.4109	0.4123	0.4137	0.4137	0.4134	0.4130	0.4117
117.5	0.4324	0.4312	0.4299	0.4299	0.4300	0.4298	0.4269	0.4235	0.4200	0.4177
120.0	0.4724	0.4667	0.4609	0.4610	0.4619	0.4627	0.4572	0.4508	0.4442	0.4389
122.5	0.5171	0.5099	0.5031	0.5043	0.5069	0.5091	0.5012	0.4916	0.4820	0.4766
125.0	0.5610	0.5562	0.5516	0.5545	0.5586	0.5623	0.5539	0.5437	0.5336	0.5275
127.5	0.6052	0.6042	0.6035	0.6065	0.6101	0.6131	0.6091	0.6039	0.5987	0.5919
130.0	0.6487	0.6516	0.6547	0.6584	0.6621	0.6654	0.6648	0.6633	0.6617	0.6571
132.5	0.6881	0.6936	0.6990	0.7033	0.7075	0.7114	0.7128	0.7136	0.7143	0.7122
135.0	0.7183	0.7242	0.7300	0.7376	0.7459	0.7542	0.7561	0.7564	0.7562	0.7528
137.5	0.7477	0.7530	0.7584	0.7696	0.7828	0.7957	0.7963	0.7942	0.7917	0.7880
140.0	0.7802	0.7828	0.7855	0.7981	0.8139	0.8291	0.8299	0.8273	0.8245	0.8201
142.5	0.8197	0.8193	0.8192	0.8300	0.8444	0.8585	0.8634	0.8660	0.8681	0.8630
145.0	0.8624	0.8595	0.8569	0.8658	0.8790	0.8922	0.8986	0.9028	0.9065	0.9050
147.5	0.8997	0.8930	0.8864	0.8951	0.9108	0.9262	0.9308	0.9313	0.9315	0.9334
150.0	0.9287	0.9234	0.9189	0.9284	0.9442	0.9593	0.9626	0.9614	0.9600	0.9612
152.5	0.9587	0.9684	0.9786	0.9869	0.9935	0.9990	0.9976	0.9933	0.9890	0.9900
155.0	0.9971	1.016	1.034	1.041	1.041	1.040	1.035	1.029	1.023	1.020
157.5	1.039	1.058	1.076	1.084	1.086	1.086	1.080	1.070	1.059	1.053
160.0	1.056	1.077	1.098	1.113	1.121	1.128	1.120	1.102	1.083	1.072
162.5	1.059	1.084	1.110	1.130	1.143	1.154	1.150	1.134	1.117	1.104
165.0	1.071	1.093	1.116	1.138	1.158	1.177	1.182	1.170	1.156	1.142
167.5	1.073	1.091	1.109	1.128	1.150	1.171	1.181	1.173	1.162	1.147
170.0	1.064	1.075	1.085	1.097	1.114	1.132	1.143	1.143	1.140	1.128
172.5	1.057	1.063	1.068	1.073	1.079	1.084	1.088	1.091	1.092	1.087
175.0	1.047	1.049	1.051	1.053	1.053	1.051	1.046	1.042	1.041	1.037
177.5	1.017	1.018	1.017	1.017	1.017	1.015	1.012	1.006	0.9965	0.9869
180.0	1.105	1.105	1.105	1.105	1.105	1.105	1.105	1.105	1.105	1.105

C Range: 0 - 360DEG  
 C Interval: 5.0DEG  
 Test Speed: HIGH  
 Temperature: 25.1DEG  
 Operators: Alan Wang  
 Test Date: 25 March 2020

γ Range: 0 - 180DEG  
 γ Interval: 0.5DEG  
 Test System: EVERFINE GO-R5000\_V2 SYSTEM V2.0.362  
 Humidity: 46.5%  
 Test Distance: 2.500m [K=0.9942]  
 Remarks:

Photometric Data Table [cd]

G/C	250.0	255.0	260.0	265.0	270.0	275.0	280.0	285.0	290.0	295.0
0.0	1460	1460	1460	1460	1460	1460	1460	1460	1460	1460
2.5	1456	1456	1457	1457	1457	1457	1457	1457	1458	1458
5.0	1449	1450	1450	1451	1451	1452	1452	1452	1453	1453
7.5	1440	1440	1441	1442	1443	1443	1444	1444	1445	1446
10.0	1428	1428	1429	1430	1431	1432	1432	1433	1434	1435
12.5	1412	1413	1414	1415	1416	1417	1418	1418	1420	1422
15.0	1394	1394	1395	1397	1398	1399	1400	1401	1403	1406
17.5	1373	1373	1374	1376	1378	1379	1380	1381	1383	1387
20.0	1349	1348	1350	1351	1353	1355	1356	1358	1361	1364
22.5	1321	1321	1323	1325	1327	1328	1330	1332	1335	1340
25.0	1291	1291	1293	1295	1297	1299	1301	1302	1307	1312
27.5	1259	1258	1260	1263	1265	1267	1269	1271	1276	1281
30.0	1224	1223	1225	1227	1230	1232	1234	1236	1242	1248
32.5	1186	1184	1187	1189	1192	1194	1196	1199	1205	1212
35.0	1146	1144	1146	1149	1151	1154	1156	1159	1166	1173
37.5	1103	1101	1103	1106	1109	1111	1114	1117	1124	1131
40.0	1057	1056	1058	1061	1063	1066	1069	1072	1079	1087
42.5	1010	1008	1010	1013	1016	1019	1021	1025	1032	1041
45.0	960.4	958.1	960.6	963.4	966.2	969.0	971.9	975.0	983.3	992.2
47.5	908.5	905.9	908.5	911.4	914.3	917.2	920.1	923.2	931.9	941.1
50.0	854.8	852.1	854.6	857.5	860.4	863.3	866.2	869.5	878.4	888.0
52.5	799.4	796.6	799.2	802.1	805.0	807.9	810.9	814.2	823.2	832.8
55.0	742.4	739.6	742.1	745.2	748.2	751.0	753.8	757.1	766.0	775.7
57.5	684.1	681.2	683.8	686.7	689.6	692.4	695.3	698.5	707.5	717.2
60.0	624.8	621.7	624.5	627.5	630.6	633.1	635.6	638.5	647.6	657.1
62.5	564.4	561.6	564.1	567.2	570.2	572.6	575.0	577.9	586.6	596.0
65.0	503.8	501.0	503.6	506.5	509.5	511.8	514.0	516.6	525.2	534.2
67.5	443.1	440.4	442.9	445.7	448.6	450.6	452.7	455.2	463.4	472.1
70.0	382.6	380.1	382.6	385.4	388.2	389.9	391.6	393.6	401.5	409.8
72.5	323.0	320.7	323.0	325.8	328.5	329.9	331.3	333.2	340.4	348.1
75.0	264.6	262.4	264.9	267.6	270.3	271.4	272.5	273.9	280.5	287.5
77.5	207.8	206.3	208.3	210.6	213.0	214.0	215.0	216.4	222.2	228.4
80.0	153.4	152.4	154.2	156.3	158.5	159.3	160.1	161.3	166.0	171.2
82.5	102.2	101.6	103.3	105.2	107.2	107.7	108.3	109.1	113.0	117.4
85.0	54.53	54.09	55.85	57.82	59.79	59.92	60.04	60.40	63.63	66.99
87.5	15.45	16.81	18.17	19.64	21.10	19.02	17.01	15.33	18.97	22.75
90.0	0.6446	0.7192	0.4512	0.2882	0.1253	0.2173	0.2598	0.3360	0.3201	0.2939
92.5	0.2487	0.2466	0.2437	0.2406	0.2376	0.2373	0.2369	0.2364	0.2346	0.2325
95.0	0.2862	0.2840	0.2814	0.2788	0.2761	0.2754	0.2747	0.2738	0.2722	0.2704
97.5	0.3297	0.3261	0.3228	0.3193	0.3157	0.3154	0.3152	0.3147	0.3138	0.3129
100.0	0.3696	0.3656	0.3630	0.3604	0.3578	0.3569	0.3562	0.3554	0.3554	0.3554
102.5	0.4021	0.3991	0.3967	0.3947	0.3927	0.3915	0.3903	0.3895	0.3891	0.3888
105.0	0.4174	0.4143	0.4134	0.4129	0.4124	0.4109	0.4094	0.4084	0.4082	0.4082
107.5	0.4188	0.4171	0.4166	0.4162	0.4158	0.4145	0.4131	0.4118	0.4108	0.4096
110.0	0.4154	0.4150	0.4145	0.4141	0.4137	0.4131	0.4125	0.4119	0.4099	0.4079
112.5	0.4108	0.4100	0.4104	0.4109	0.4114	0.4108	0.4102	0.4096	0.4079	0.4062
115.0	0.4103	0.4089	0.4097	0.4106	0.4115	0.4110	0.4104	0.4098	0.4086	0.4073
117.5	0.4152	0.4130	0.4143	0.4159	0.4174	0.4168	0.4162	0.4155	0.4138	0.4122
120.0	0.4345	0.4300	0.4313	0.4329	0.4345	0.4336	0.4327	0.4317	0.4297	0.4277
122.5	0.4718	0.4669	0.4652	0.4635	0.4619	0.4626	0.4634	0.4637	0.4592	0.4544
125.0	0.5213	0.5152	0.5161	0.5174	0.5187	0.5148	0.5109	0.5068	0.5016	0.4961
127.5	0.5847	0.5776	0.5754	0.5736	0.5717	0.5674	0.5630	0.5586	0.5536	0.5484
130.0	0.6523	0.6477	0.6441	0.6401	0.6361	0.6296	0.6230	0.6159	0.6063	0.5966
132.5	0.7093	0.7067	0.7039	0.7009	0.6979	0.6879	0.6779	0.6673	0.6521	0.6371
135.0	0.7489	0.7450	0.7402	0.7354	0.7305	0.7207	0.7109	0.7010	0.6905	0.6796
137.5	0.7840	0.7799	0.7739	0.7679	0.7618	0.7518	0.7418	0.7322	0.7259	0.7196
140.0	0.8154	0.8104	0.8083	0.8065	0.8046	0.7909	0.7772	0.7647	0.7661	0.7671
142.5	0.8562	0.8494	0.8478	0.8466	0.8454	0.8346	0.8236	0.8141	0.8197	0.8254
145.0	0.9021	0.8995	0.8988	0.8982	0.8975	0.8927	0.8878	0.8829	0.8786	0.8746
147.5	0.9359	0.9383	0.9399	0.9412	0.9425	0.9365	0.9304	0.9241	0.9179	0.9114
150.0	0.9630	0.9647	0.9627	0.9603	0.9579	0.9574	0.9567	0.9555	0.9490	0.9427
152.5	0.9925	0.9947	0.9938	0.9923	0.9908	0.9945	0.9980	0.9992	0.9902	0.9800
155.0	1.018	1.015	1.013	1.011	1.009	1.015	1.021	1.022	1.011	0.9999
157.5	1.049	1.045	1.041	1.037	1.033	1.037	1.042	1.043	1.031	1.017
160.0	1.065	1.058	1.053	1.048	1.043	1.043	1.043	1.042	1.038	1.033
162.5	1.092	1.081	1.073	1.065	1.057	1.058	1.058	1.058	1.057	1.056
165.0	1.127	1.114	1.103	1.094	1.085	1.086	1.086	1.084	1.078	1.071
167.5	1.130	1.114	1.107	1.106	1.104	1.100	1.094	1.086	1.072	1.058
170.0	1.109	1.091	1.084	1.084	1.084	1.081	1.076	1.067	1.048	1.031
172.5	1.075	1.060	1.045	1.031	1.017	1.025	1.030	1.025	1.003	0.9853
175.0	1.024	1.009	0.9966	0.9892	0.9819	0.9842	0.9829	0.9775	0.9700	0.9656
177.5	0.9770	0.9677	0.9632	0.9681	0.9730	0.9561	0.9387	0.9310	0.9288	0.9298
180.0	1.105	1.105	1.105	1.105	1.105	1.105	1.105	1.105	1.105	1.105

C Range: 0 - 360DEG  
 C Interval: 5.0DEG  
 Test Speed: HIGH  
 Temperature: 25.1DEG  
 Operators: Alan Wang  
 Test Date: 25 March 2020

γ Range: 0 - 180DEG  
 γ Interval: 0.5DEG  
 Test System: EVERFINE GO-R5000\_V2 SYSTEM V2.0.362  
 Humidity: 46.5%  
 Test Distance: 2.500m [K=0.9942]  
 Remarks:

Photometric Data Table [cd]

G/C	300.0	305.0	310.0	315.0	320.0	325.0	330.0	335.0	340.0	345.0
0.0	1460	1460	1460	1460	1460	1460	1460	1460	1460	1460
2.5	1458	1458	1458	1459	1459	1459	1459	1459	1459	1459
5.0	1454	1454	1455	1455	1455	1456	1456	1457	1458	1458
7.5	1447	1448	1448	1449	1450	1451	1451	1452	1453	1454
10.0	1437	1438	1439	1440	1441	1443	1444	1445	1446	1447
12.5	1424	1426	1427	1428	1430	1432	1434	1436	1437	1438
15.0	1408	1410	1412	1414	1416	1419	1421	1423	1425	1426
17.5	1390	1392	1395	1397	1400	1403	1406	1408	1410	1412
20.0	1368	1371	1374	1377	1380	1384	1388	1391	1393	1395
22.5	1344	1347	1351	1354	1358	1363	1367	1370	1373	1376
25.0	1317	1321	1325	1329	1333	1339	1344	1347	1350	1353
27.5	1287	1292	1296	1301	1306	1312	1317	1322	1325	1329
30.0	1254	1259	1264	1270	1276	1282	1288	1293	1297	1301
32.5	1218	1224	1230	1236	1242	1250	1257	1262	1266	1271
35.0	1180	1186	1193	1199	1207	1214	1222	1228	1233	1238
37.5	1139	1146	1153	1160	1168	1176	1185	1191	1197	1202
40.0	1096	1103	1110	1118	1127	1136	1145	1152	1157	1163
42.5	1050	1057	1065	1073	1082	1092	1102	1109	1115	1122
45.0	1001	1009	1018	1026	1036	1046	1056	1064	1070	1077
47.5	950.5	958.9	967.3	975.9	986.4	997.3	1008	1016	1023	1030
50.0	897.7	906.3	915.0	923.9	934.6	945.8	957.0	965.0	972.3	979.4
52.5	842.6	851.4	860.2	869.3	880.4	891.9	903.4	911.5	919.1	926.6
55.0	785.6	794.5	803.5	812.7	824.1	835.8	847.5	855.7	863.4	870.9
57.5	726.9	735.9	744.8	753.9	765.4	777.3	789.2	797.4	805.1	812.7
60.0	666.8	675.7	684.5	693.6	705.1	716.9	728.8	737.0	744.8	752.5
62.5	605.6	614.2	622.8	631.7	643.1	654.9	666.8	674.9	682.6	690.2
65.0	543.4	551.7	560.0	568.5	579.7	591.2	602.8	610.8	618.5	626.1
67.5	481.0	488.7	496.4	504.4	515.1	526.3	537.5	545.3	552.8	560.2
70.0	418.3	425.5	432.7	440.2	450.5	461.2	472.1	479.4	486.6	493.7
72.5	356.0	362.5	369.1	375.9	385.6	395.6	405.7	412.7	419.4	426.0
75.0	294.6	300.4	306.2	312.4	321.3	330.7	340.1	346.5	352.7	358.9
77.5	234.8	239.8	244.9	250.2	258.3	266.9	275.4	281.1	286.7	292.2
80.0	176.6	180.9	185.4	190.1	196.8	203.8	211.1	216.2	221.2	226.2
82.5	121.8	125.1	128.5	132.1	137.6	143.3	149.2	153.5	157.8	162.1
85.0	70.65	72.91	75.30	77.96	82.06	86.42	90.87	94.32	97.81	101.2
87.5	26.47	26.65	26.95	27.41	31.18	35.09	39.07	40.75	42.54	44.40
90.0	0.2068	1.897	3.732	5.734	4.280	2.714	1.024	4.049	7.315	10.83
92.5	0.2304	0.2321	0.2361	0.2376	0.2355	0.2322	0.2262	0.2358	0.2541	0.2622
95.0	0.2689	0.2696	0.2702	0.2706	0.2694	0.2680	0.2665	0.2669	0.2674	0.2636
97.5	0.3118	0.3134	0.3151	0.3167	0.3155	0.3142	0.3127	0.3097	0.3066	0.2982
100.0	0.3553	0.3552	0.3553	0.3553	0.3525	0.3495	0.3463	0.3416	0.3369	0.3276
102.5	0.3882	0.3864	0.3845	0.3825	0.3799	0.3773	0.3744	0.3697	0.3647	0.3543
105.0	0.4076	0.4052	0.4026	0.3998	0.3962	0.3927	0.3894	0.3865	0.3833	0.3748
107.5	0.4090	0.4074	0.4058	0.4039	0.3984	0.3927	0.3876	0.3860	0.3842	0.3755
110.0	0.4060	0.4052	0.4044	0.4031	0.3969	0.3905	0.3845	0.3835	0.3826	0.3755
112.5	0.4045	0.4026	0.4007	0.3987	0.3944	0.3898	0.3853	0.3830	0.3806	0.3724
115.0	0.4059	0.4028	0.3996	0.3966	0.3947	0.3928	0.3906	0.3885	0.3860	0.3793
117.5	0.4105	0.4090	0.4074	0.4058	0.4054	0.4049	0.4047	0.4058	0.4068	0.4027
120.0	0.4263	0.4271	0.4279	0.4287	0.4293	0.4300	0.4310	0.4362	0.4412	0.4406
122.5	0.4504	0.4536	0.4570	0.4599	0.4605	0.4611	0.4626	0.4691	0.4755	0.4763
125.0	0.4911	0.4924	0.4940	0.4955	0.4956	0.4956	0.4964	0.5031	0.5099	0.5103
127.5	0.5432	0.5382	0.5333	0.5297	0.5327	0.5358	0.5387	0.5419	0.5451	0.5421
130.0	0.5873	0.5803	0.5733	0.5680	0.5725	0.5773	0.5813	0.5821	0.5826	0.5768
132.5	0.6229	0.6159	0.6092	0.6043	0.6089	0.6141	0.6186	0.6201	0.6210	0.6147
135.0	0.6692	0.6621	0.6551	0.6492	0.6498	0.6510	0.6526	0.6549	0.6570	0.6505
137.5	0.7135	0.7098	0.7060	0.7016	0.6952	0.6888	0.6847	0.6883	0.6917	0.6834
140.0	0.7666	0.7618	0.7567	0.7508	0.7414	0.7321	0.7261	0.7299	0.7338	0.7225
142.5	0.8284	0.8181	0.8068	0.7954	0.7847	0.7742	0.7671	0.7702	0.7726	0.7575
145.0	0.8694	0.8596	0.8495	0.8390	0.8267	0.8143	0.8058	0.8079	0.8100	0.7908
147.5	0.9041	0.8930	0.8816	0.8708	0.8616	0.8527	0.8464	0.8462	0.8449	0.8208
150.0	0.9359	0.9283	0.9204	0.9126	0.9057	0.8983	0.8920	0.8889	0.8845	0.8555
152.5	0.9708	0.9640	0.9574	0.9524	0.9510	0.9492	0.9429	0.9292	0.9143	0.8755
155.0	0.9901	0.9845	0.9796	0.9799	0.9900	0.9994	0.9944	0.9674	0.9383	0.8897
157.5	1.008	1.007	1.008	1.013	1.026	1.039	1.036	1.011	0.9824	0.9303
160.0	1.032	1.039	1.046	1.051	1.051	1.051	1.044	1.028	1.009	0.9611
162.5	1.057	1.060	1.062	1.062	1.058	1.053	1.042	1.026	1.007	0.9612
165.0	1.069	1.072	1.075	1.071	1.062	1.052	1.039	1.024	1.005	0.9661
167.5	1.054	1.060	1.067	1.065	1.057	1.047	1.035	1.021	1.003	0.9727
170.0	1.027	1.035	1.043	1.042	1.037	1.031	1.025	1.017	1.004	0.9742
172.5	0.9885	1.005	1.018	1.017	1.012	1.008	1.008	1.005	0.9940	0.9716
175.0	0.9749	0.9846	0.9887	0.9875	0.9886	0.9933	0.9989	1.002	0.9988	0.9938
177.5	0.9350	0.9400	0.9496	0.9615	0.9729	0.9836	0.9929	1.000	1.006	1.010
180.0	1.105	1.105	1.105	1.105	1.105	1.105	1.105	1.105	1.105	1.105

C Range: 0 - 360DEG  
 C Interval: 5.0DEG  
 Test Speed: HIGH  
 Temperature: 25.1DEG  
 Operators: Alan Wang  
 Test Date: 25 March 2020

γ Range: 0 - 180DEG  
 γ Interval: 0.5DEG  
 Test System: EVERFINE GO-R5000\_V2 SYSTEM V2.0.362  
 Humidity: 46.5%  
 Test Distance: 2.500m [K=0.9942]  
 Remarks:

## Photometric Data Table [cd]

G/C  
0.0  
2.5  
5.0  
7.5  
10.0  
12.5  
15.0  
17.5  
20.0  
22.5  
25.0  
27.5  
30.0  
32.5  
35.0  
37.5  
40.0  
42.5  
45.0  
47.5  
50.0  
52.5  
55.0  
57.5  
60.0  
62.5  
65.0  
67.5  
70.0  
72.5  
75.0  
77.5  
80.0  
82.5  
85.0  
87.5  
90.0  
92.5  
95.0  
97.5  
100.0  
102.5  
105.0  
107.5  
110.0  
112.5  
115.0  
117.5  
120.0  
122.5  
125.0  
127.5  
130.0  
132.5  
135.0  
137.5  
140.0  
142.5  
145.0  
147.5  
150.0  
152.5  
155.0  
157.5  
160.0  
162.5  
165.0  
167.5  
170.0  
172.5  
175.0  
177.5  
180.0

C Range: 0 - 360DEG  
C Interval: 5.0DEG  
Test Speed: HIGH  
Temperature: 25.1DEG  
Operators: Alan Wang  
Test Date: 25 March 2020

$\gamma$  Range: 0 - 180DEG  
 $\gamma$  Interval: 0.5DEG  
Test System: EVERFINE GO-R5000\_V2 SYSTEM V2.0.362  
Humidity: 46.5%  
Test Distance: 2.500m [K=0.9942]  
Remarks: