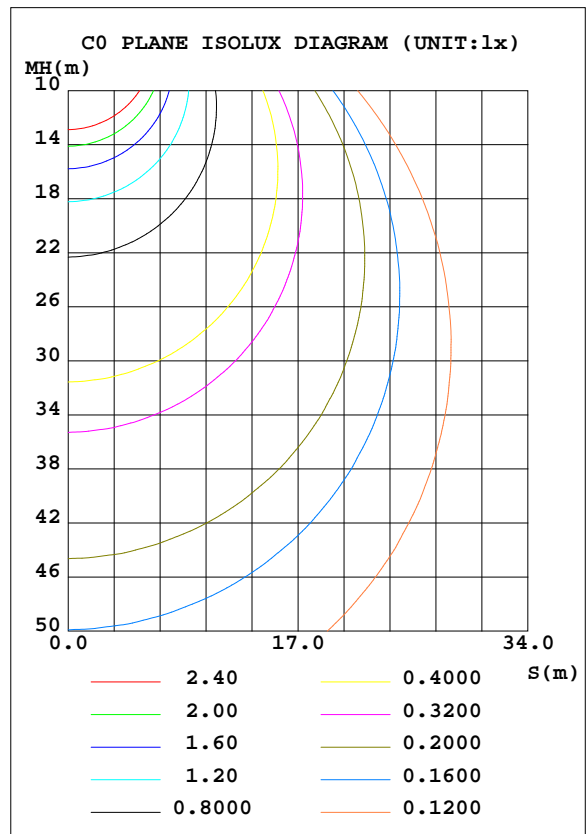
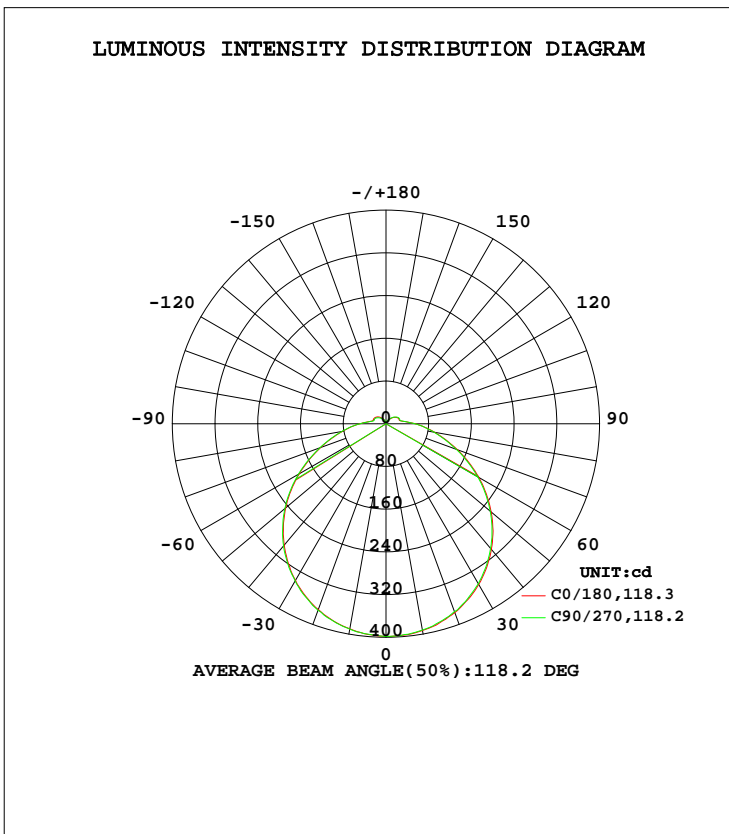


LUMINAIRE PHOTOMETRIC TEST REPORT

Test:U:120.1V I:0.1226A P:14.36W PF:0.9755 Lamp Flux:1420.98x1 lm		
NAME: ASD-LFMDR-MV-12D15CC-EM-NK 4000K	TYPE:N/A	WEIGHT:N/A
SPEC.:N/A	DIM.: N/A	SERIAL No.:N/A
MFR.: ASD Lighting corp	SUR.:N/A	Shielding Angle:N/A

DATA OF LAMP		PHOTOMETRIC DATA Eff: 98.95 lm/W			
MODEL	PSZ2S220523001-10	Imax(cd)	398.7	S/MH(C0/180)	1.30
NOMINAL POWER(W)		LOR(%)	100.0	S/MH(C90/270)	1.29
RATED VOLTAGE(V)	120	TOTAL FLUX(lm)	1421.0	η UP, DN(C0-180)	4.7,44.6
NOMINAL FLUX(lm)	1420.98	CIE CLASS	DIRECT	η UP, DN(C180-360)	5.0,45.7
LAMPS INSIDE	1	η up(%)	9.7	CIBSE SHR NOM	1.25
TEST VOLTAGE(V)	120	η down(%)	90.3	CIBSE SHR MAX	1.35



C Range: 0 - 360DEG  
 C Interval: 22.5DEG  
 Test Speed: HIGH  
 Temperature:25.4DEG  
 Operators:Carl  
 Test Date:2022-06-04

γ Range: 0 - 180DEG  
 γ Interval: 1.0DEG  
 Test System:EVERFINE GO-R5000\_V2 SYSTEM V2.0.351  
 Humidity:39%  
 Test Distance:2.526m [K=1.0000]  
 Remarks:

ZONAL FLUX DIAGRAM

ZONAL FLUX DIAGRAM:

γ	C0	C45	C90	C135	C180	C225	C270	C315	γ	Φ zone	Φ total	%lum, lamp
10	390.0	389.8	390.6	393.0	393.1	393.5	392.4	391.0	0- 10	37.70	37.70	2.65,2.65
20	370.3	370.0	371.8	375.3	376.3	377.5	374.5	372.1	10- 20	108.5	146.2	10.3,10.3
30	338.8	338.2	340.2	345.6	347.5	348.8	345.9	341.3	20- 30	165.9	312.1	22,22
40	296.8	295.4	298.3	305.0	307.1	308.9	304.8	299.1	30- 40	202.6	514.7	36.2,36.2
50	245.4	243.9	247.2	254.7	257.1	259.5	254.6	248.0	40- 50	214.1	728.8	51.3,51.3
60	187.3	185.7	189.6	196.9	200.7	203.2	198.3	190.4	50- 60	199.5	928.3	65.3,65.3
70	130.2	128.2	131.7	139.0	142.4	145.7	140.2	131.9	60- 70	163.1	1091	76.8,76.8
80	83.07	81.48	84.12	89.37	92.25	95.59	91.23	84.54	70- 80	117.0	1208	85,85
90	49.32	47.78	49.19	52.31	54.99	57.84	54.60	50.03	80- 90	75.17	1284	90.3,90.3
100	28.39	26.88	27.57	28.96	29.96	31.99	30.74	28.78	90-100	42.67	1326	93.3,93.3
110	25.13	23.53	23.44	24.25	25.95	27.63	27.10	26.01	100-110	27.56	1354	95.3,95.3
120	23.68	22.11	21.71	22.36	23.64	25.09	24.68	23.90	110-120	24.50	1378	97,97
130	20.25	18.46	17.70	17.96	18.69	19.76	19.54	19.64	120-130	19.13	1398	98.3,98.3
140	15.54	15.52	12.79	12.74	12.31	13.57	13.30	14.03	130-140	12.76	1410	99.2,99.2
150	10.11	8.560	8.651	7.771	6.392	7.851	7.851	8.692	140-150	6.900	1417	99.7,99.7
160	4.108	2.829	4.231	4.410	2.986	3.364	5.014	3.197	150-160	2.794	1420	99.9,99.9
170	3.167	2.374	3.193	2.326	1.885	2.364	2.697	1.950	160-170	0.8369	1421	100,100
180	0.4826	0.6547	0.4500	0	0.6628	0.6630	0.6655	0.6648	170-180	0.1803	1421	100,100
DEG	LUMINOUS INTENSITY:cd									UNIT:lm		

Conical surface Flux(90deg): 621.98 lm

%lum = 43.8%  
%lamp = 43.8%

Conical surface Flux(120deg): 928.33 lm

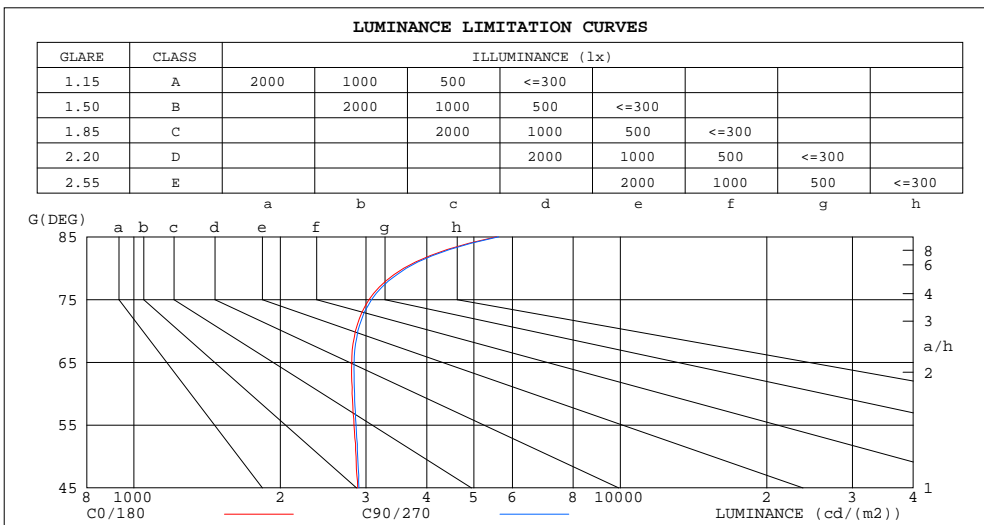
%lum = 65.3%  
%lamp = 65.3%

C Range: 0 - 360DEG  
C Interval: 22.5DEG  
Test Speed: HIGH  
Temperature:25.4DEG  
Operators:Carl  
Test Date:2022-06-04

γ Range: 0 - 180DEG  
γ Interval: 1.0DEG  
Test System:EVERFINE GO-R5000\_V2 SYSTEM V2.0.351  
Humidity:39%  
Test Distance:2.526m [K=1.0000]  
Remarks:

LUMINANCE LIMITATION CURVES

Test:U:120.1V I:0.1226A P:14.36W PF:0.9755 Lamp Flux:1420.98x1 lm		
NAME: ASD-LFMDR-MV-12D15CC-EM-NK 4000K	TYPE:N/A	WEIGHT:N/A
SPEC.:N/A	DIM.: N/A	SERIAL No.:N/A
MFR.: ASD Lighting corp	SUR.:N/A	Shielding Angle:N/A



LUMINANCE cd/(m2)		
G (DEG)	C0/180	C90/270
85	5565	5616
80	3587	3632
75	3043	3080
70	2854	2887
65	2804	2837
60	2809	2844
55	2835	2863
50	2863	2884
45	2885	2902

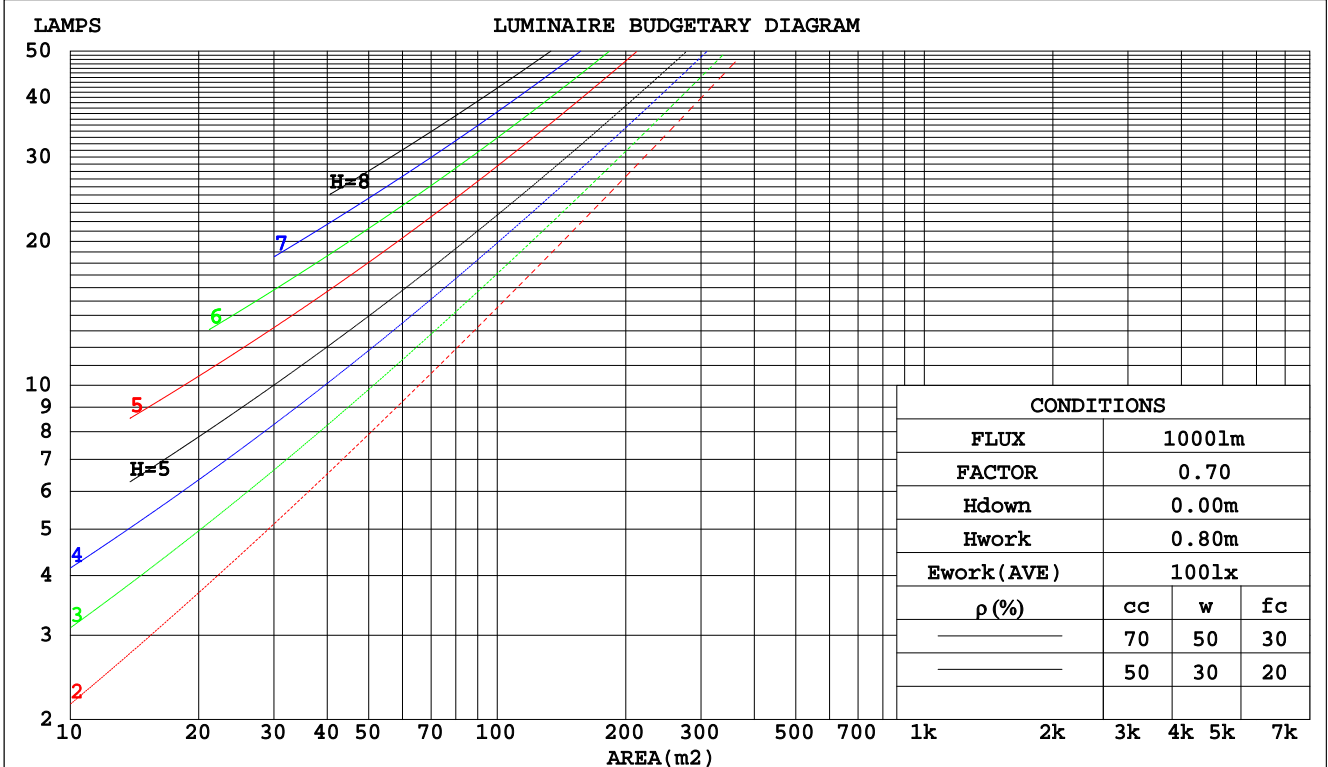
C Range: 0 - 360DEG  
 C Interval: 22.5DEG  
 Test Speed: HIGH  
 Temperature: 25.4DEG  
 Operators: Carl  
 Test Date: 2022-06-04

$\gamma$  Range: 0 - 180DEG  
 $\gamma$  Interval: 1.0DEG  
 Test System: EVERFINE GO-R5000\_V2 SYSTEM V2.0.351  
 Humidity: 39%  
 Test Distance: 2.526m [K=1.0000]  
 Remarks:

CU AND LUMINAIRE BUDGETARY ESTIMATE DIAGRAM

Test:U:120.1V I:0.1226A P:14.36W PF:0.9755 Lamp Flux:1420.98x1 lm		
NAME: ASD-LFMDR-MV-12D15CC-EM-NK 4000K	TYPE:N/A	WEIGHT:N/A
SPEC.:N/A	DIM.: N/A	SERIAL No.:N/A
MFR.: ASD Lighting corp	SUR.:N/A	Shielding Angle:N/A

pcc	80%			70%			50%			30%			10%			0
	50%	30%	10%	50%	30%	10%	50%	30%	10%	50%	30%	10%	50%	30%	10%	0
pw																0
pfc	20%			20%			20%			20%			20%			0
RCR	RCR:Room Cavity Ratio      Coefficients of Utilization(CU)															
0.0	1.17	1.17	1.17	1.13	1.13	1.13	1.06	1.06	1.06	.99	.99	.99	.93	.93	.93	.90
1.0	.99	.94	.90	.96	.92	.88	.90	.86	.83	.84	.81	.79	.79	.77	.75	.72
2.0	.86	.78	.72	.83	.76	.70	.78	.72	.67	.73	.68	.64	.69	.65	.61	.59
3.0	.75	.66	.59	.72	.64	.58	.68	.61	.56	.64	.58	.54	.60	.55	.51	.49
4.0	.66	.57	.50	.64	.55	.49	.60	.53	.47	.57	.51	.45	.53	.48	.44	.41
5.0	.59	.49	.43	.57	.48	.42	.54	.46	.41	.51	.44	.39	.48	.42	.38	.35
6.0	.53	.44	.37	.51	.43	.36	.48	.41	.35	.46	.39	.34	.43	.38	.33	.31
7.0	.48	.39	.32	.46	.38	.32	.44	.37	.31	.42	.35	.30	.40	.34	.29	.27
8.0	.43	.35	.29	.42	.34	.28	.40	.33	.28	.38	.32	.27	.36	.31	.26	.24
9.0	.40	.31	.26	.39	.31	.26	.37	.30	.25	.35	.29	.24	.33	.28	.24	.22
10.0	.37	.29	.23	.36	.28	.23	.34	.27	.23	.33	.26	.22	.31	.25	.21	.20



C Range: 0 - 360DEG  
 C Interval: 22.5DEG  
 Test Speed: HIGH  
 Temperature:25.4DEG  
 Operators:Carl  
 Test Date:2022-06-04

γ Range: 0 - 180DEG  
 γ Interval: 1.0DEG  
 Test System:EVERFINE GO-R5000\_V2 SYSTEM V2.0.351  
 Humidity:39%  
 Test Distance:2.526m [K=1.0000]  
 Remarks:

WEC AND CCEC

Test:U:120.1V I:0.1226A P:14.36W PF:0.9755 Lamp Flux:1420.98x1 lm		
NAME: ASD-LFMDR-MV-12D15CC-EM-NK 4000K	TYPE:N/A	WEIGHT:N/A
SPEC.:N/A	DIM.: N/A	SERIAL No.:N/A
MFR.: ASD Lighting corp	SUR.:N/A	Shielding Angle:N/A

ρcc	80%			70%			50%			30%			10%			0
ρw	50%	30%	10%	50%	30%	10%	50%	30%	10%	50%	30%	10%	50%	30%	10%	0
ρfc	20%			20%			20%			20%			20%			0
RCR	RCR:Room Cavity Ratio						Wall Exitance Coefficients(WEC)									
0.0																
1.0	.353	.201	.064	.343	.196	.062	.324	.186	.059	.306	.177	.057	.290	.168	.054	
2.0	.315	.173	.053	.306	.168	.052	.289	.161	.050	.273	.153	.048	.259	.146	.046	
3.0	.284	.151	.045	.276	.148	.045	.261	.141	.043	.247	.135	.041	.234	.129	.040	
4.0	.258	.134	.039	.251	.131	.039	.237	.126	.038	.225	.121	.036	.213	.116	.035	
5.0	.237	.121	.035	.230	.118	.034	.218	.113	.033	.206	.109	.032	.195	.104	.031	
6.0	.218	.109	.031	.212	.107	.031	.201	.103	.030	.190	.099	.029	.181	.095	.028	
7.0	.202	.100	.028	.197	.098	.028	.186	.094	.027	.177	.091	.026	.168	.087	.026	
8.0	.188	.092	.026	.183	.090	.025	.174	.087	.025	.165	.084	.024	.157	.080	.023	
9.0	.175	.085	.024	.171	.083	.023	.163	.080	.023	.155	.077	.022	.147	.075	.022	
10.0	.165	.079	.022	.161	.078	.022	.153	.075	.021	.145	.072	.021	.138	.070	.020	

ρcc	80%			70%			50%			30%			10%			0
ρw	50%	30%	10%	50%	30%	10%	50%	30%	10%	50%	30%	10%	50%	30%	10%	0
ρfc	20%			20%			20%			20%			20%			0
RCR	RCR:Room Cavity Ratio						Ceiling Cavity Exitance Coefficients(CCEC)									
0.0	.264	.264	.264	.226	.226	.226	.154	.154	.154	.089	.089	.089	.028	.028	.028	
1.0	.258	.230	.205	.220	.197	.177	.151	.136	.122	.087	.079	.071	.028	.025	.023	
2.0	.250	.207	.170	.214	.178	.147	.147	.123	.102	.085	.072	.060	.027	.023	.020	
3.0	.242	.190	.147	.208	.164	.128	.143	.114	.090	.082	.066	.053	.026	.022	.017	
4.0	.235	.177	.132	.201	.153	.115	.138	.106	.081	.080	.062	.048	.026	.020	.016	
5.0	.227	.167	.122	.195	.144	.106	.134	.101	.075	.078	.059	.044	.025	.019	.015	
6.0	.220	.158	.114	.189	.137	.100	.130	.096	.071	.076	.056	.042	.024	.018	.014	
7.0	.213	.152	.109	.183	.131	.095	.126	.092	.067	.073	.054	.040	.024	.018	.013	
8.0	.206	.146	.105	.177	.127	.091	.123	.089	.065	.071	.052	.039	.023	.017	.013	
9.0	.200	.141	.101	.172	.123	.089	.119	.086	.063	.070	.051	.037	.023	.017	.012	
10.0	.194	.137	.099	.167	.119	.086	.116	.084	.061	.068	.049	.037	.022	.016	.012	

C Range: 0 - 360DEG  
 C Interval: 22.5DEG  
 Test Speed: HIGH  
 Temperature:25.4DEG  
 Operators:Carl  
 Test Date:2022-06-04

γ Range: 0 - 180DEG  
 γ Interval: 1.0DEG  
 Test System:EVERFINE GO-R5000\_V2 SYSTEM V2.0.351  
 Humidity:39%  
 Test Distance:2.526m [K=1.0000]  
 Remarks:

UGR(Unified Glare Rating) Table

Test:U:120.1V I:0.1226A P:14.36W PF:0.9755 Lamp Flux:1420.98x1 lm										
NAME: ASD-LFMDR-MV-12D15CC-EM-NK 4000K					TYPE:N/A			WEIGHT:N/A		
SPEC.:N/A					DIM.: N/A			SERIAL No.:N/A		
MFR.: ASD Lighting corp					SUR.:N/A			Shielding Angle:N/A		
ceiling/cavity	0.7	0.7	0.5	0.5	0.3	0.7	0.7	0.5	0.5	0.3
walls	0.5	0.3	0.5	0.3	0.3	0.5	0.3	0.5	0.3	0.3
working plane	0.2	0.2	0.2	0.2	0.2	0.2	0.2	0.2	0.2	0.2
Room dimensions	Viewed crosswise					Viewed endwise				
x = 2H y = 2H	15.7	17.2	16.1	17.5	17.9	15.8	17.2	16.2	17.6	18.0
3H	17.5	18.8	17.9	19.2	19.6	17.5	18.9	18.0	19.3	19.7
4H	18.3	19.6	18.8	20.0	20.5	18.4	19.7	18.9	20.1	20.5
6H	19.2	20.4	19.7	20.9	21.4	19.3	20.5	19.8	20.9	21.4
8H	19.7	20.9	20.2	21.3	21.8	19.8	20.9	20.3	21.4	21.9
12H	20.2	21.3	20.7	21.8	22.3	20.3	21.4	20.8	21.9	22.4
4H 2H	16.3	17.6	16.8	18.0	18.5	16.4	17.6	16.8	18.1	18.5
3H	18.3	19.4	18.8	19.9	20.4	18.3	19.5	18.8	19.9	20.4
4H	19.3	20.3	19.9	20.8	21.4	19.4	20.4	19.9	20.9	21.4
6H	20.4	21.3	20.9	21.8	22.4	20.5	21.4	21.0	21.9	22.5
8H	21.0	21.8	21.5	22.4	22.9	21.0	21.9	21.6	22.4	23.0
12H	21.6	22.4	22.2	23.0	23.6	21.7	22.5	22.3	23.0	23.6
8H 4H	19.7	20.6	20.3	21.1	21.7	19.8	20.6	20.3	21.1	21.7
6H	21.0	21.7	21.6	22.3	23.0	21.1	21.8	21.7	22.4	23.0
8H	21.8	22.4	22.4	23.0	23.7	21.8	22.5	22.4	23.1	23.7
12H	22.6	23.2	23.3	23.8	24.5	22.7	23.2	23.3	23.9	24.5
12H 4H	19.8	20.6	20.4	21.1	21.7	19.8	20.6	20.4	21.2	21.8
6H	21.2	21.8	21.8	22.4	23.1	21.2	21.9	21.8	22.5	23.1
8H	22.0	22.6	22.7	23.2	23.9	22.1	22.6	22.7	23.2	23.9
Variations with the observer position at spacings:										
S = 1.0H	+ 0.1 / - 0.1					+ 0.1 / - 0.1				
1.5H	+ 0.2 / - 0.3					+ 0.2 / - 0.3				
2.0H	+ 0.1 / - 0.3					+ 0.1 / - 0.3				

CIE Pub.117 Corrected 1421 lm Total Lamp Luminous Flux.(8log(F/F0) = 1.2)

C Range: 0 - 360DEG  
 C Interval: 22.5DEG  
 Test Speed: HIGH  
 Temperature:25.4DEG  
 Operators:Carl  
 Test Date:2022-06-04

γ Range: 0 - 180DEG  
 γ Interval: 1.0DEG  
 Test System:EVERFINE GO-R5000\_V2 SYSTEM V2.0.351  
 Humidity:39%  
 Test Distance:2.526m [K=1.0000]  
 Remarks:

UTILIZATION FACTORS TABLE

Test:U:120.1V I:0.1226A P:14.36W PF:0.9755 Lamp Flux:1420.98x1 lm		
NAME: ASD-LFMDR-MV-12D15CC-EM-NK 4000K	TYPE:N/A	WEIGHT:N/A
SPEC.:N/A	DIM.: N/A	SERIAL No.:N/A
MFR.: ASD Lighting corp	SUR.:N/A	Shielding Angle:N/A

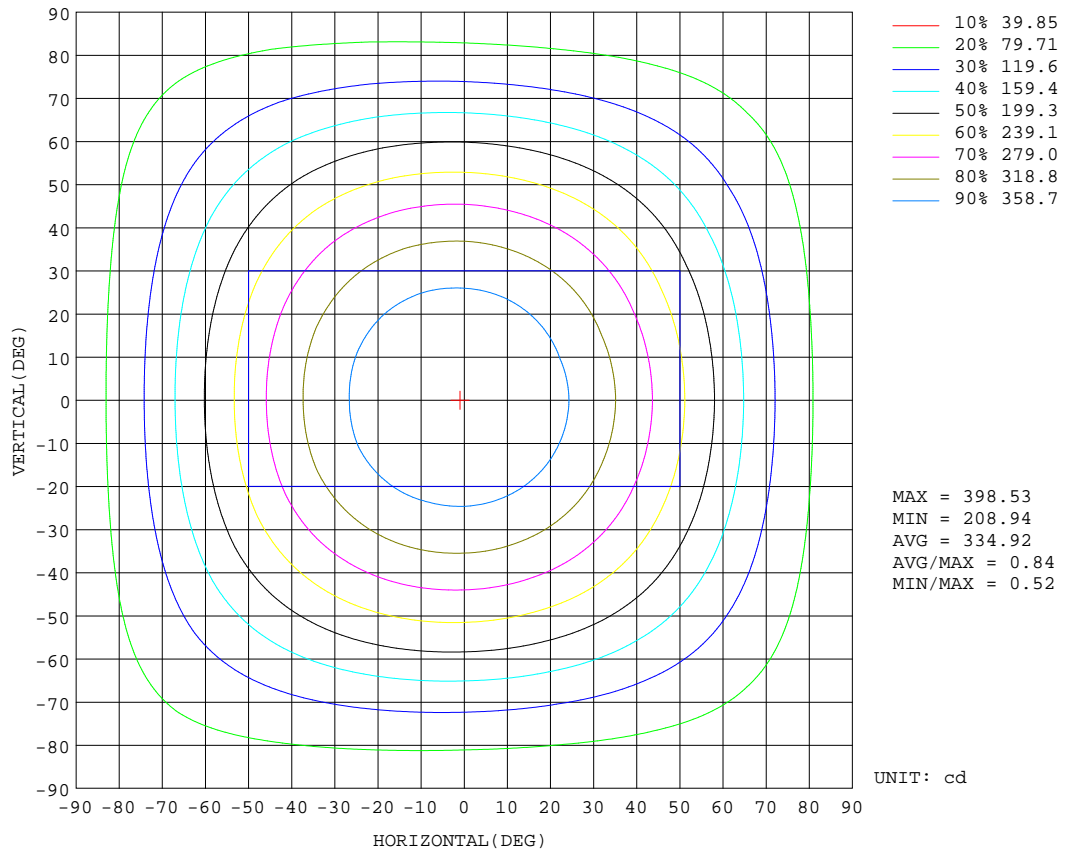
REFLECTANCE										
Ceiling	0.8	0.8	0.8	0.7	0.7	0.7	0.5	0.5	0.5	0
Walls	0.7	0.5	0.3	0.7	0.5	0.3	0.7	0.5	0.3	0
Working plane	0.2	0.2	0.2	0.2	0.2	0.2	0.2	0.2	0.2	0
ROOM INDEX	UTILIZATION FACTORS(PERCENT) $k(RI) \times RCR = 5$									
k = 0.60	52	40	33	51	40	33	50	39	33	26
0.80	62	50	42	61	49	42	58	48	41	33
1.00	70	58	50	68	57	50	65	58	49	41
1.25	77	65	57	75	64	57	71	62	56	47
1.50	82	71	63	80	70	62	76	67	61	51
2.00	89	79	72	87	77	71	82	74	68	58
2.50	93	84	77	90	82	76	85	78	73	62
3.00	97	89	82	94	86	80	88	82	77	66
4.00	101	94	88	98	92	86	92	87	83	71
5.00	104	98	93	101	95	91	94	90	86	74
ROOM INDEX	UF(total)									Direct
According to DIN EN 13032-2 2004			Suspended				SHRNOM = 1.25			

C Range: 0 - 360DEG  
 C Interval: 22.5DEG  
 Test Speed: HIGH  
 Temperature:25.4DEG  
 Operators:Carl  
 Test Date:2022-06-04

$\gamma$  Range: 0 - 180DEG  
 $\gamma$  Interval: 1.0DEG  
 Test System:EVERFINE GO-R5000\_V2 SYSTEM V2.0.351  
 Humidity:39%  
 Test Distance:2.526m [K=1.0000]  
 Remarks:

ISOCANDELA DIAGRAM

Test:U:120.1V I:0.1226A P:14.36W PF:0.9755 Lamp Flux:1420.98x1 lm		
NAME: ASD-LFMDR-MV-12D15CC-EM-NK 4000K	TYPE:N/A	WEIGHT:N/A
SPEC.:N/A	DIM.: N/A	SERIAL No.:N/A
MFR.: ASD Lighting corp	SUR.:N/A	Shielding Angle:N/A



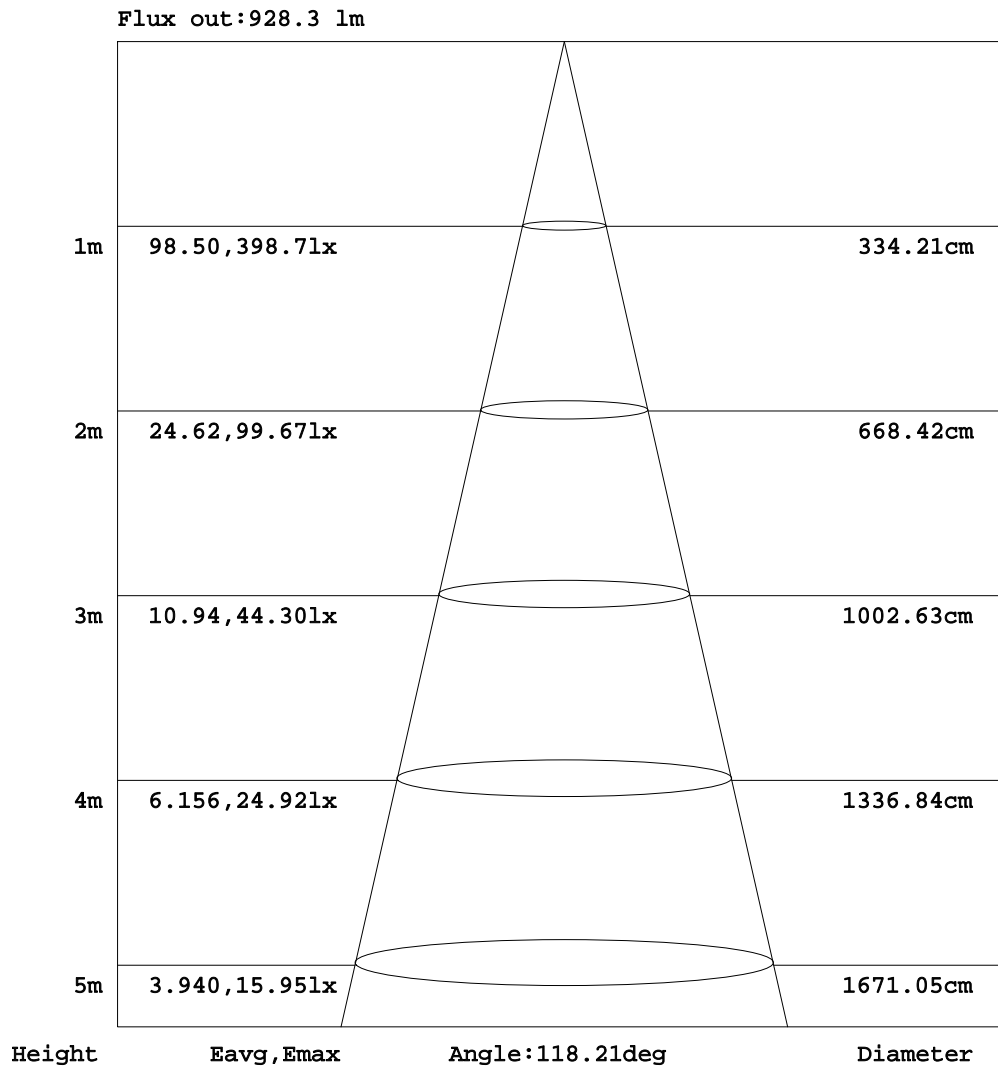
C Range: 0 - 360DEG  
 C Interval: 22.5DEG  
 Test Speed: HIGH  
 Temperature:25.4DEG  
 Operators:Carl  
 Test Date:2022-06-04

γ Range: 0 - 180DEG  
 γ Interval: 1.0DEG  
 Test System:EVERFINE GO-R5000\_V2 SYSTEM V2.0.351  
 Humidity:39%  
 Test Distance:2.526m [K=1.0000]  
 Remarks:



AAI Figure

Test:U:120.1V I:0.1226A P:14.36W PF:0.9755 Lamp Flux:1420.98x1 lm		
NAME: ASD-LFMDR-MV-12D15CC-EM-NK 4000K	TYPE:N/A	WEIGHT:N/A
SPEC.:N/A	DIM.: N/A	SERIAL No.:N/A
MFR.: ASD Lighting corp	SUR.:N/A	Shielding Angle:N/A



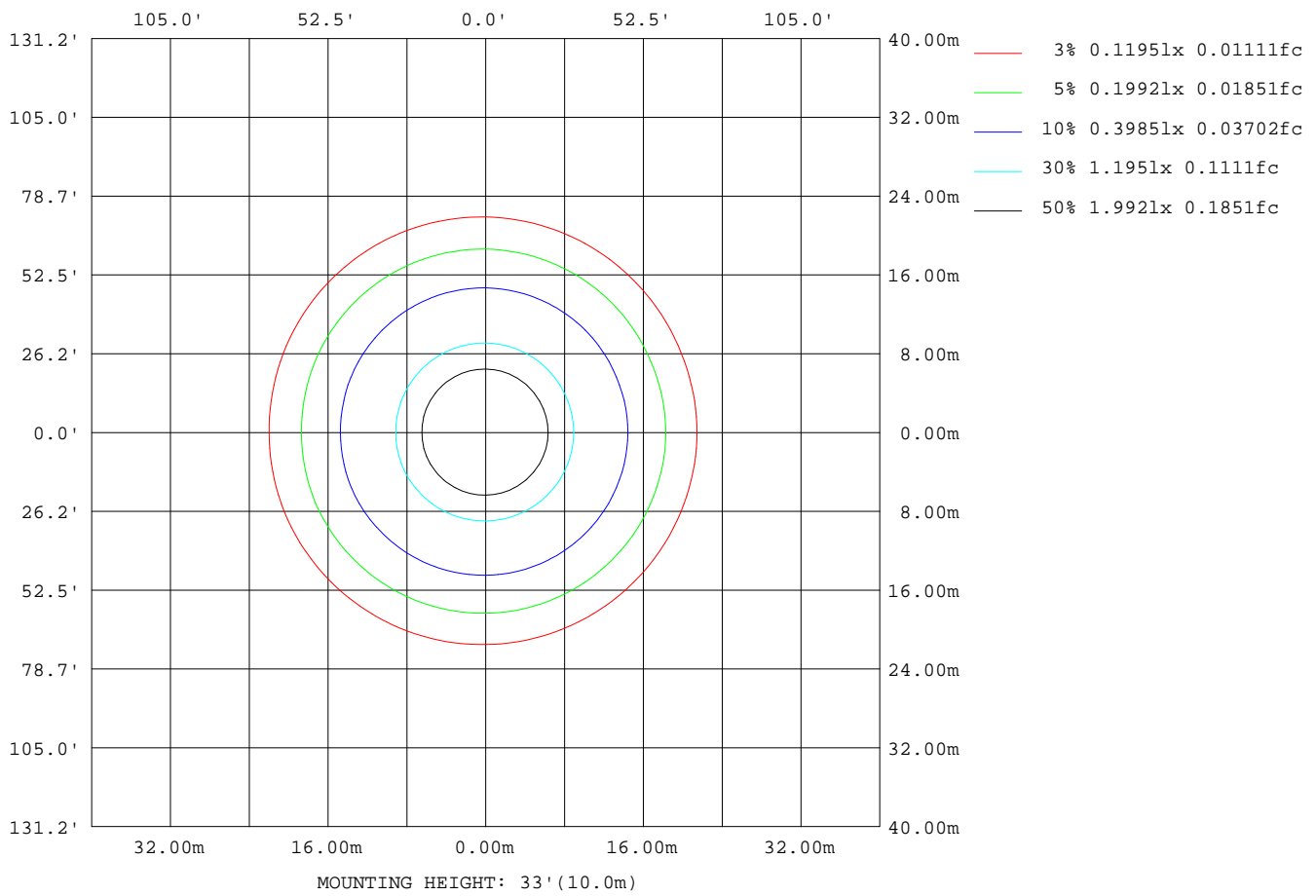
Note:The Curves indicate the illuminated area and the average illumination when the luminaire is at different distance.

C Range: 0 - 360DEG  
 C Interval: 22.5DEG  
 Test Speed: HIGH  
 Temperature:25.4DEG  
 Operators:Carl  
 Test Date:2022-06-04

γ Range: 0 - 180DEG  
 γ Interval: 1.0DEG  
 Test System:EVERFINE GO-R5000\_V2 SYSTEM V2.0.351  
 Humidity:39%  
 Test Distance:2.526m [K=1.0000]  
 Remarks:

**ISOLUX DIAGRAM**

Test:U:120.1V I:0.1226A P:14.36W PF:0.9755 Lamp Flux:1420.98x1 lm		
NAME: ASD-LFMDR-MV-12D15CC-EM-NK 4000K	TYPE:N/A	WEIGHT:N/A
SPEC.:N/A	DIM.: N/A	SERIAL No.:N/A
MFR.: ASD Lighting corp	SUR.:N/A	Shielding Angle:N/A



C Range: 0 - 360DEG  
 C Interval: 22.5DEG  
 Test Speed: HIGH  
 Temperature:25.4DEG  
 Operators:Carl  
 Test Date:2022-06-04

γ Range: 0 - 180DEG  
 γ Interval: 1.0DEG  
 Test System:EVERFINE GO-R5000\_V2 SYSTEM V2.0.351  
 Humidity:39%  
 Test Distance:2.526m [K=1.0000]  
 Remarks:

**LED Avg.L Report**

Test:U:120.1V I:0.1226A P:14.36W PF:0.9755 Lamp Flux:1420.98x1 lm		
NAME: ASD-LFMDR-MV-12D15CC-EM-NK 4000K	TYPE:N/A	WEIGHT:N/A
SPEC.:N/A	DIM.: N/A	SERIAL No.:N/A
MFR.: ASD Lighting corp	SUR.:N/A	Shielding Angle:N/A

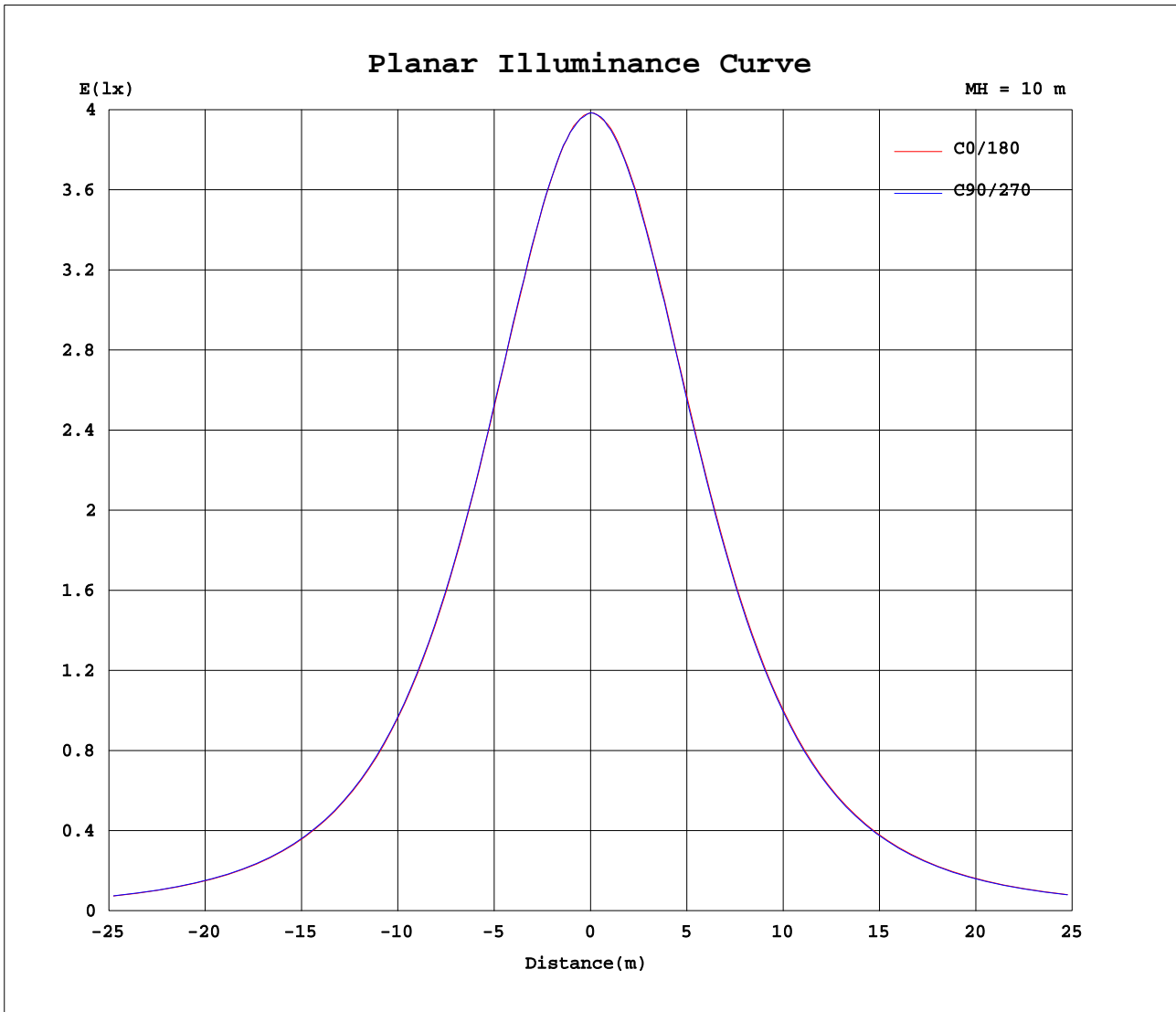
AvgL	cd/m2
L_0~180(65)av	2918
L_0~180(75)av	3192
L_0~180(85)av	5888
L_90~270(65)av	2912
L_90~270(75)av	3188
L_90~270(85)av	5884
L_45(65)av	2920
L_45(75)av	3194
L_45(85)av	5887

Standard: GB/T 29293-2012

C Range: 0 - 360DEG  
 C Interval: 22.5DEG  
 Test Speed: HIGH  
 Temperature:25.4DEG  
 Operators:Carl  
 Test Date:2022-06-04

γ Range: 0 - 180DEG  
 γ Interval: 1.0DEG  
 Test System:EVERFINE GO-R5000\_V2 SYSTEM V2.0.351  
 Humidity:39%  
 Test Distance:2.526m [K=1.0000]  
 Remarks:

Planar Illuminance Curve



C Range: 0 - 360DEG  
 C Interval: 22.5DEG  
 Test Speed: HIGH  
 Temperature: 25.4DEG  
 Operators: Carl  
 Test Date: 2022-06-04

$\gamma$  Range: 0 - 180DEG  
 $\gamma$  Interval: 1.0DEG  
 Test System: EVERFINE GO-R5000\_V2 SYSTEM V2.0.351  
 Humidity: 39%  
 Test Distance: 2.526m [K=1.0000]  
 Remarks:

LUMINOUS DISTRIBUTION INTENSITY DATA

Test:U:120.1V I:0.1226A P:14.36W PF:0.9755 Lamp Flux:1420.98x1 lm		
NAME: ASD-LFMDR-MV-12D15CC-EM-NK 4000K	TYPE:N/A	WEIGHT:N/A
SPEC.:N/A	DIM.: N/A	SERIAL No.:N/A
MFR.: ASD Lighting corp	SUR.:N/A	Shielding Angle:N/A

Table--1

UNIT: cd

C(DEG)\ γ (DEG)	0	22.5	45	67.5	90	112.5	135	157.5	180	202.5	225	247.5	270	292.5	315	337.5			
0	398	398	398	398	398	398	398	398	398	398	398	398	398	398	398	398			
5	396	395	396	395	395	399	397	397	397	396	397	397	396	396	396	396			
10	390	390	390	390	391	392	393	394	393	392	394	393	392	392	391	390			
15	382	381	382	382	382	383	386	387	386	387	387	387	385	385	384	382			
20	370	369	370	371	372	373	375	377	376	377	377	377	374	373	372	370			
25	356	355	356	356	357	359	362	364	363	364	365	364	362	360	358	356			
30	339	338	338	339	340	341	346	348	347	349	349	348	346	343	341	339			
35	319	318	318	319	321	323	326	329	329	330	330	329	327	324	321	319			
40	297	295	295	296	298	302	305	308	307	308	309	308	305	302	299	297			
45	272	270	270	272	274	277	281	284	284	285	285	284	281	277	274	271			
50	245	244	244	245	247	251	255	258	257	259	259	258	255	251	248	245			
55	217	215	215	216	219	222	226	230	229	232	232	230	227	223	220	216			
60	187	186	186	187	190	193	197	201	201	202	203	202	198	194	190	187			
65	158	156	156	157	160	164	168	171	171	173	174	172	169	165	161	158			
70	130	128	128	129	132	135	139	142	142	145	146	144	140	136	132	129			
75	105	103	103	104	106	109	113	116	115	118	119	117	114	110	107	104			
80	83.1	81.5	81.5	82.3	84.1	86.6	89.4	92.4	92.3	94.4	95.6	94.2	91.2	87.8	84.5	81.9			
85	64.7	63.4	63.3	64.1	65.3	67.4	69.5	72.2	72.3	74.3	75.3	74.3	71.6	68.6	65.8	63.6			
90	49.3	48.0	47.8	48.3	49.2	50.8	52.3	54.5	55.0	56.8	57.8	56.9	54.6	52.1	50.0	48.5			
95	36.7	35.7	35.2	35.5	36.1	37.1	38.5	39.9	40.1	41.7	42.7	42.1	40.1	38.2	36.8	36.3			
100	28.4	27.9	26.9	26.9	27.6	27.8	29.0	29.8	30.0	31.5	32.0	31.7	30.7	29.3	28.8	28.2			
105	25.0	24.2	23.5	23.3	23.4	23.5	24.3	25.2	25.9	26.8	27.5	27.5	27.0	26.3	25.9	25.4			
110	25.1	24.3	23.5	23.3	23.4	23.7	24.3	25.1	26.0	26.9	27.6	27.6	27.1	26.4	26.0	25.5			
115	24.8	23.9	23.2	22.9	23.0	23.3	23.8	24.5	25.4	26.3	27.0	26.9	26.4	25.8	25.4	25.0			
120	23.7	22.7	22.1	21.7	21.7	22.0	22.4	23.1	23.6	24.4	25.1	25.0	24.7	24.1	23.9	23.6			
125	22.1	21.1	20.3	19.9	19.8	20.0	20.3	21.0	21.3	22.1	22.5	22.7	22.4	22.0	22.0	21.8			
130	20.3	19.3	18.5	18.0	17.7	17.8	18.0	18.6	18.7	19.4	19.8	19.8	19.5	19.5	19.6	20.0			
135	18.0	17.0	16.7	15.7	15.3	15.3	15.2	15.9	15.7	16.3	16.8	16.6	16.7	16.6	16.9	17.5			
140	15.5	14.6	15.5	13.9	12.8	12.5	12.7	13.0	12.3	12.9	13.6	13.6	13.3	13.4	14.0	14.9			
145	12.6	12.4	11.8	11.6	10.7	10.3	10.0	9.93	8.84	9.86	11.2	10.6	9.95	10.0	11.2	12.1			
150	10.1	9.86	8.56	9.13	8.65	7.99	7.77	7.20	6.39	8.54	7.85	7.97	7.85	6.60	8.69	8.74			
155	6.91	6.08	5.35	6.28	8.14	6.43	5.19	6.04	5.34	5.42	5.26	6.35	5.18	4.52	5.36	5.76			
160	4.11	3.79	2.83	4.24	4.23	4.26	4.41	2.79	2.99	3.46	3.36	4.57	5.01	3.09	3.20	4.53			
165	3.18	2.70	1.95	3.51	3.58	3.57	3.40	1.88	2.28	2.28	2.50	2.74	3.04	2.06	2.41	2.94			
170	3.17	2.45	2.37	2.74	3.19	3.12	2.33	1.52	1.89	1.90	2.36	2.49	2.70	1.88	1.95	2.51			
175	1.55	2.55	2.80	1.42	1.68	1.53	1.12	1.55	1.20	1.21	1.79	1.98	1.36	0.99	1.24	1.52			
180	0.48	0.59	0.65	0.60	0.45	0.47	0.00	0.00	0.66	0.66	0.66	0.66	0.67	0.66	0.66	0.67			

C Range: 0 - 360DEG  
 C Interval: 22.5DEG  
 Test Speed: HIGH  
 Temperature:25.4DEG  
 Operators:Carl  
 Test Date:2022-06-04

γ Range: 0 - 180DEG  
 γ Interval: 1.0DEG  
 Test System:EVERFINE GO-R5000\_V2 SYSTEM V2.0.351  
 Humidity:39%  
 Test Distance:2.526m [K=1.0000]  
 Remarks: