



LED ADJUSTABLE CUTOFF WALLPACK

Standard Series

► **DESIGN & OPTIONS** - Our LED FULL CUT-OFF WALLPACKS are built with die-cast aluminum and impact-resistant polycarbonate. This fixture can be used in most outdoor locations and it is the perfect replacement for traditional outdoor wallpacks. It emits no visible light above a 90° angle making it perfect for congested areas where light pollution may be an issue. All models are equipped with 0-10V dimmable drivers. The fixture comes with a regular Voltage (120-277V) and Daylight (5000K) color temperature, and a BRONZE finish.

► **INSTALLATION** - The fixture mounts to a junction box or directly to a wall. The housing features a removable hinge door and multiple points of entry which makes installation quick and easy. Refer to installation instructions for detailed steps.

► **APPLICATION** - It is the ideal solution for areas where harsh glares need to be avoided including general security lighting, carports, loading areas, driveways, and parking areas as well as industrial, warehouse, manufacturing, and commercial facilities. These lights are Wet location rated and perfect for retrofit or new construction applications. The LED FULL CUT-OFF WALLPACKS can operate in temperatures between -4+113°F (-20+45°C). This allows it to be utilized in a wide variety of applications and climates.

► **ENERGY SAVING & EFFICIENCY** - This fixture provides a lumen output equal to MH/HPS and can cut your electric bill by up to 80% instantly. With a lifespan of 54,000 hours, these fixtures are made to last decades under normal operation! This fixture will save you a significant amount of money in its lifetime.

► **CERTIFICATION & WARRANTY** - Buy with confidence: ASD provides a 5-year warranty along with UL and DLC Premium certification for top quality and safety guarantee!

*Top US certifications allow participation in rebates; please check on rebate programs available in your state.

Catalog number	
Notes	
Type	



PRODUCT LEGEND:

Family	Modification	Watts	Dimmable	CCT	Finish
ASD-WLP	02A	XX	X	XX	X
LED Adjustable Cutoff Wallpack		12 = 12 W; 30 = 30 W 50 = 50 W; 80 = 80 W 120 = 120 W	N = Non-dimmable D = Dimmable	4,000 K 5,000 K	B = Bronze

LED ADJUSTABLE CUTOFF WALLPACK:

Model	Watts	Dimming	CCT	Lumens	Dimensions (LxWxH)
ASD-WLP02A-12N40B	12 W	No	4,000 K	1,282 lm	6' x 5" x 3 3/8"
ASD-WLP02A-12N50B	12 W	No	5,000 K	1,321 lm	6' x 5" x 3 3/8"
ASD-WLP02A-30N50B	30 W	No	5,000 K	3,298 lm	9' x 7 5/8" x 4 1/2"
ASD-WLP02A-50N50B	50 W	No	5,000 K	5,287 lm	9' x 7 5/8" x 4 1/2"
ASD-WLP02A-80D50B	80 W	0-10 V	5,000 K	9,241 lm	13 1/8" x 11" x 5 1/2"
ASD-WLP02A-120D50B	120 W	0-10 V	5,000 K	14,227 lm	13 1/8" x 11" x 5 1/2"

ORDERING INFORMATION:

Model	Watts	CCT	UPC	Pcs. per Carton	Carton Size	Carton Weight	GTIN 14
ASD-WLP02A-12N40B	12 W	4,000 K	819201021451	12	12.8"x10.83"x12.6"	24.25 lbs	10819201021458
ASD-WLP02A-12N50B	12 W	5,000 K	857622006787	12	12.8"x10.83"x12.6"	24.25 lbs	10857622006784
ASD-WLP02A-30N50B	30 W	5,000 K	857622006794	4	16.34"x10.04"x10.04"	18.3 lbs	10857622006791
ASD-WLP02A-50N50B	50 W	5,000 K	857622006800	4	16.34"x10.04"x10.04"	18.3 lbs	10857622006807
ASD-WLP02A-80D50B	80 W	5,000 K	857622006817	2	13.58"x12.99"x14.57"	23.15 lbs	10857622006814
ASD-WLP02A-120D50B	120 W	5,000 K	857622006824	2	13.58"x12.99"x14.57"	23.15 lbs	10857622006821

Model	Name	Materials	Weight	Dimensions	UPC	Pcs. per Carton	Carton Size	Carton Weight	GTIN 14
ASD-WLP01-02-PC	Photocell for LED Wallpack	Plastic	0.08 lb (0.04 kg)	2 1/8"x1 1/8"x1 5/8"	819201024445	200	14.17"x11.02"x16.93"	28.66 lbs	10819201024442

For most up-to-date spec sheets please refer to asd-lighting.com

ASD LIGHTING CORP

E-mail: orders@asd-lighting.com | Web site: www.asd-lighting.com





LED ADJUSTABLE CUTOFF WALLPACK

Standard Series

PRODUCT SPECIFICATIONS:

Construction & Materials			Electrical System			
Lens	Polycarbonate		Input Voltage	120-277V AC 50/60 Hz		
Housing	Die-Casting Aluminum		Max input current	ASD-WLP02A-12N40B	0.15 A	
Finish	Bronze			ASD-WLP02A-12N50B	0.15 A	
Weight	ASD-WLP02A-12N40B	1.76 lb (0.8 kg)		ASD-WLP02A-30N50B	0.38 A	
	ASD-WLP02A-12N50B			ASD-WLP02A-50N50B	0.52 A	
	ASD-WLP02A-30N50B	4.17 lb (1.9 kg)		ASD-WLP02A-80D50B	1 A	
	ASD-WLP02A-50N50B			ASD-WLP02A-120D50B	1.5 A	
	ASD-WLP02A-80D50B	4.5 lb (9.88 kg)	Inrush current (Action time)	ASD-WLP02A-12N40B	20 A (0.6 S)	
	ASD-WLP02A-120D50B			ASD-WLP02A-12N50B		
Environmental System				ASD-WLP02A-30N50B		30 A (0.6 S)
Work Environment	Suitable for Wet Locations, IP65		ASD-WLP02A-50N50B			
Operating Temperature	-40°F to 104°F (-40°C to 40°C)		ASD-WLP02A-80D50B			
L-70 reported / calculated	> 36,000 hrs / > 51,000 hrs		ASD-WLP02A-120D50B			
Optical System			AC input range	min 90 V max 305 V		
Luminous Flux	ASD-WLP02A-12N40B	1,282 lm	Off State Power	0 W		
	ASD-WLP02A-12N50B	1,321 lm	Power Consumption	ASD-WLP02A-12N40B	12 W	
	ASD-WLP02A-30N50B	3,298 lm		ASD-WLP02A-12N50B	12 W	
	ASD-WLP02A-50N50B	5,287 lm		ASD-WLP02A-30N50B	30 W	
	ASD-WLP02A-80D50B	9,241 lm		ASD-WLP02A-50N50B	50 W	
	ASD-WLP02A-120D50B	14,227 lm		ASD-WLP02A-80D50B	80 W	
ASD-WLP02A-120D50B				ASD-WLP02A-120D50B	120 W	
Color Temperature	5,000 K		Power Factor	≥ 0.9		
CRI	>80		Output voltage	ASD-WLP02A-12N40B	26-48 V	
Dimming compatible controls				ASD-WLP02A-12N50B	26-48 V	
Brand	Leviton	Lutron		Legrand	ASD-WLP02A-30N50B	24-45 V
Models	DS710 IP710	NTSTV-DV NFTV DTVV-WH		H4FBL3PW	ASD-WLP02A-50N50B	23-42 V
Warranty & Certifications				ASD-WLP02A-80D50B	28-40 V	
5-year limited warranty				ASD-WLP02A-120D50B	40 V	
cULus certified E473804			Max output current	ASD-WLP02A-12N40B	250 mA	
DesignLights Consortium (DLC) listed (Classification: Standard)				ASD-WLP02A-12N50B	250 mA	
· Main: Outdoor Luminaires				ASD-WLP02A-30N50B	700 mA	
· General Application: Low Output				ASD-WLP02A-50N50B	1.2 A	
· Primary Use: Outdoor Full-Cutoff Wall-Mounted Area Luminaires				ASD-WLP02A-80D50B	2 A	
				ASD-WLP02A-120D50B	2.1-3 A	
			LED Driver Class	Class 2		

PACKAGE CONTENTS:

Description	Q-ty
LED Adjustable Cutoff Wallpack Fixture	1
Box	1
Cut sheet	2

The LED Wallpack is designed to install as a surface mounted luminaire.

ACCESSORIES:

This light includes an optional Photocell which activates the light during low illumination (At Dusk) and de-activates the light when illuminated (At Dawn).

Photocell for LED Wallpack		
Model	ASD-WLP01-02-PC	
Operate Level	10-20 Lx	ON
	30-80 Lx	OFF

For most up-to-date spec sheets please refer to asd-lighting.com

ASD LIGHTING CORP

E-mail: orders@asd-lighting.com | Web site: www.asd-lighting.com





LED ADJUSTABLE CUTOFF WALLPACK

Standard Series

INSTALLATION GUIDE

IMPORTANT SAFETY INFORMATION:

Please read all the instructions below before installation.

- ▶ Make sure that the supply voltage corresponds to the rated product voltage.
- ▶ The product must be installed by a qualified electrician in accordance with the National Electrical Code and corresponding local codes.
- ▶ If the product is damaged, do not use it.

⚠ WARNING

RISK OF PERSONAL INJURY – READ and follow all WARNINGS and installation instructions.

Keep or give to the owner for future reference.

Risk of cuts: Wear gloves to prevent cuts or abrasions when removing from carton, handling, installing, and maintaining this product.

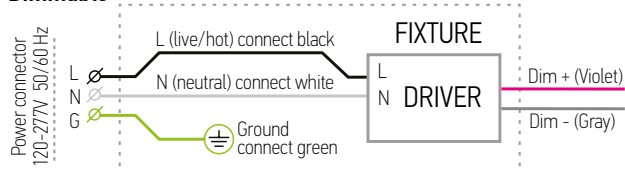
Risk of electric shock: This product must be installed in accordance with the applicable installation code by a person familiar with the construction and operation of the product and the hazards involved.

Risk of Fire: Minimum 194°F supply conductors. Consult a qualified electrician to ensure correct branch circuit conductor.

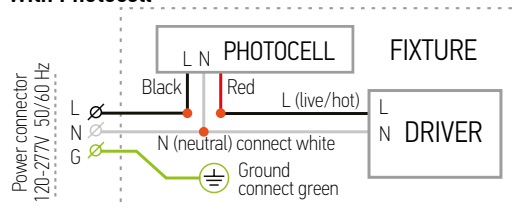
ASD® assumes no responsibility for claims arising out of improper or careless installation or handling of this product.

ELECTRICAL SCHEMATIC DIAGRAM:

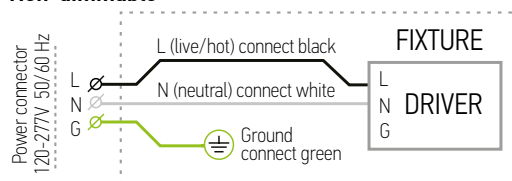
Dimmable



With Photocell

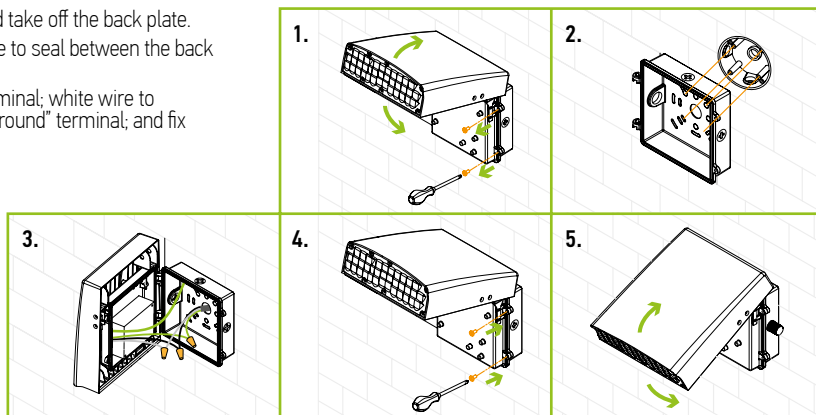


Non-dimmable



INSTALLATION STEPS:

1. Open the fixture with 90 degree at least, loosen the 2 screws and take off the back plate.
2. Secure the back plate to junction box by screws, put silicone glue to seal between the back plate and mounting surface, attention the UP (↑) direction.
3. Hang the fixture on the back plate. Connect wires into wiring terminal; white wire to "Neutral" terminal, black wire to "Live" terminal, green wire to "Ground" terminal; and fix them by screws connect the ground wire to the back plate.
4. Close fixture and tighten the 2 screws.
5. Adjust the fixture to a proper angle.
6. Loosen the screws after the installation.

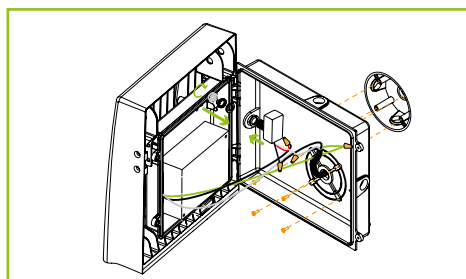


PHOTOCELL INSTALLATION:

Take out one of the knockout caps, place the first O-ring on PC thread, install the photocell into the receptacle base.

Place the second O-ring, screw the plastic nut, and tighten the transparent cap on PC thread at the outer side of the fixture.

Connect all the photocell wires according to PHOTOCELL ELECTRICAL SCHEMATIC DIAGRAM.



For most up-to-date spec sheets please refer to asd-lighting.com