



# LED SEAMLESS VAPOR PROOF FIXTURE

► **DESIGN & OPTIONS** - LED SEAMLESS VAPOR PROOF FIXTURE has a waterproof polycarbonate body with a frosted lens, making this fixture impact resistant and able to maintain its luster over time. The color temperature can be set to 3,500K, 4,000K or 5,000K, while the wattage options depend on the vapor size. Multiple fixtures can be linked together with vapor-tight strain relief connectors. It comes in 4ft and 8ft sizes with a 0-10V dimmable driver at 120-277V.



**Models with a built-in battery back-up** provide 90 minutes of power in case of emergency.

► **INSTALLATION** - Two side entry points on the fixture make it easy to connect multiple fixtures to one switch. It can be surface mounted or suspended. Refer to install instructions for detailed steps.

► **APPLICATION** - These LED SEAMLESS VAPOR PROOF FIXTURES are the perfect choice for wet and dusty locations. Common applications include: parking garages, carports, cold freezers, stairwells, tunnels, car washes, patios, barns, canopies and locker rooms. These fixtures are IP65 rated and are resistant to water and dust. They operate in temperatures between -40 to 122°F (-40 to 50°C), allowing them to be utilized in a wide variety of applications and climates.

► **ENERGY SAVINGS & EFFICIENCY** - With a calculated lifespan up to 80,000 hours, these fixtures are made to last decades under normal operation! This fixture can cut your electric bill by up to 80% instantly and will save you a significant amount of money in its lifetime.

► **CERTIFICATION & WARRANTY** - Buy with confidence: ASD provides a 5-year limited warranty along with UL certification to guarantee top quality products and safety!

DLC Standard classification allows participation in rebates; please check the rebate programs available in your state.

|                |  |
|----------------|--|
| Catalog number |  |
| Notes          |  |
| Type           |  |



| Model                                 | Type | Watts      | Voltage   | Dimmable | Lumens                 | CCT                        | Dimensions (LxWxH)          | Option              |
|---------------------------------------|------|------------|-----------|----------|------------------------|----------------------------|-----------------------------|---------------------|
| ASD-LVP2SM-4A56AC                     | 4 ft | 32/48/56W  | 120-277 V | 0-10 V   | 4,471/6,155/7,253 lm   | 3CCT (3,500/4,000/5,000 K) | 48-1/8" x 3-9/16" x 3-3/16" | -                   |
| ASD-LVP2SM-8A120AC                    | 8 ft | 64/96/120W | 120-277 V | 0-10 V   | 9,258/13,773/17,359 lm | 3CCT (3,500/4,000/5,000 K) | 94-3/4" x 3-9/16" x 3-3/16" | -                   |
| <b>LVP2SM-EM WITH BATTERY BACK-UP</b> |      |            |           |          |                        |                            |                             |                     |
| ASD-LVP2SM-4A56AC-10EM                | 4 ft | 32/48/56W  | 120-277 V | 0-10 V   | 4,772/6,109/7,140 lm   | 3CCT (3,500/4,000/5,000 K) | 48-1/8" x 3-9/16" x 3-3/16" | 10W Battery back-up |
| ASD-LVP2SM-8A120AC-20EM               | 8 ft | 64/96/120W | 120-277 V | 0-10 V   | 9,414/14,025/17,325 lm | 3CCT (3,500/4,000/5,000 K) | 94-3/4" x 3-9/16" x 3-3/16" | 20W Battery back-up |

## ORDERING INFORMATION

| Model                                 | UPC          | Pcs. per carton | Carton size          | Carton weight | GTIN 14        |
|---------------------------------------|--------------|-----------------|----------------------|---------------|----------------|
| ASD-LVP2SM-4A56AC                     | 810050735513 | 9               | 49.6" x 11.8" x 12"  | 56 lb         | 10810050735510 |
| ASD-LVP2SM-8A120AC                    | 810050735520 | 6               | 96.3" x 11.8" x 8.9" | 58.9 lb       | 10810050735527 |
| <b>LVP2SM-EM WITH BATTERY BACK-UP</b> |              |                 |                      |               |                |
| ASD-LVP2SM-4A56AC-10EM                | 810050735537 | 9               | 49.6" x 11.8" x 12"  | 61 lb         | 10810050735534 |
| ASD-LVP2SM-8A120AC-20EM               | 810050735544 | 6               | 96.3" x 11.8" x 8.9" | 69.4 lb       | 10810050735541 |

For most up-to-date spec sheets please refer to [asd-lighting.com](http://asd-lighting.com)

**ASD LIGHTING CORP**

E-mail: [orders@asd-lighting.com](mailto:orders@asd-lighting.com) | Web site: [www.asd-lighting.com](http://www.asd-lighting.com)





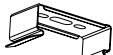
# LED SEAMLESS VAPOR PROOF FIXTURE


## PRODUCT SPECIFICATIONS:

| Construction & Materials  |                                  |                        |          | Electrical system            |                         |                         |          |
|---|----------------------------------|------------------------|----------|------------------------------|-------------------------|-------------------------|----------|
| Housing   | PC                               |                        |          | Input voltage                | 120-277 V               |                         |          |
| Lens  | PC                               |                        |          | Max input current            | ASD-LVP2SM-4A56AC       | 0.55 A                  |          |
| Finish  | White                            |                        |          |                              | ASD-LVP2SM-8A120AC      | 1.15 A                  |          |
| Weight  | ASD-LVP2SM-4A56AC                | 5.4 lb (2.5 kg)        |          |                              | ASD-LVP2SM-4A56AC-10EM  | 0.55 A                  |          |
|   | ASD-LVP2SM-8A120AC               | 7.9 lb (3.6 kg)        |          |                              | ASD-LVP2SM-8A120AC-20EM | 1.15 A                  |          |
|   | ASD-LVP2SM-4A56AC-10EM           | 6 lb (2.7 kg)          |          | ASD-LVP2SM-4A56AC            | 40 A (0.46 S)           |                         |          |
|   | ASD-LVP2SM-8A120AC-20EM          | 9.7 lb (4.4 kg)        |          | ASD-LVP2SM-8A120AC           | 80 A (0.58 S)           |                         |          |
| Environmental system  |                                  |                        |          | Inrush current (Action time) | ASD-LVP2SM-4A56AC-10EM  | 40 A (0.46 S)           |          |
| Work environment  | Suitable for Wet Locations, IP65 |                        |          |                              | ASD-LVP2SM-8A120AC-20EM | 80 A (0.58 S)           |          |
| Operating temperature   | -40°F to 122°F (-40°C to 50°C)   |                        |          |                              |                         |                         |          |
| L-70 Life   | R > 54,000 hrs; C > 80,000 hrs   |                        |          | Off state power              | 0W                      |                         |          |
| Optical system  |                                  |                        |          | Power consumption            | ASD-LVP2SM-4A56AC       | 32/48/56W               |          |
| Luminous flux   | ASD-LVP2SM-4A56AC                | 4,471/6,155/7,253 lm   |          |                              | ASD-LVP2SM-8A120AC      | 64/96/120W              |          |
|   | ASD-LVP2SM-8A120AC               | 9,258/13,773/17,359 lm |          |                              | ASD-LVP2SM-4A56AC-10EM  | 32/48/56W               |          |
|   | ASD-LVP2SM-4A56AC-10EM           | 4,772/6,109/7,140 lm   |          |                              | ASD-LVP2SM-8A120AC-20EM | 64/96/120W              |          |
|   | ASD-LVP2SM-8A120AC-20EM          | 9,414/14,025/17,325 lm |          | Power factor                 | > 0.9                   |                         |          |
| Color temperature   | 3CCT (3,500/4,000/5,000 K)       |                        |          | Output voltage               | ASD-LVP2SM-4A56AC       | 93-115 V                |          |
| CRI   | > 80                             |                        |          |                              | ASD-LVP2SM-8A120AC      | 95-107 V                |          |
| Dimming compatible controls                                     |                                  |                        |          |                              | ASD-LVP2SM-4A56AC-10EM  | 93-115 V                |          |
| Brand   | Leviton                          | Legrand                | Lutron   |                              | Eaton                   | ASD-LVP2SM-8A120AC-20EM | 95-107 V |
| Models  | IP710-DLZ/NFTV                   | H4FBL3PW               | DVSTV-WH | DF10P-C1                     | Max output current      | ASD-LVP2SM-4A56AC       | 0.46 A   |
|   |                                  |                        |          | ASD-LVP2SM-8A120AC           |                         | 1.05 A                  |          |
|   |                                  |                        |          | ASD-LVP2SM-4A56AC-10EM       |                         | 0.46 A                  |          |
|   |                                  |                        |          | ASD-LVP2SM-8A120AC-20EM      |                         | 1.05 A                  |          |
|   |                                  |                        |          | Surge protection DM/CM       | 4 kV / 6 kV             |                         |          |
| Regular and voluntary certifications                            |                                  |                        |          |                              |                         |                         |          |
| 5-year limited warranty   |                                  |                        |          |                              |                         |                         |          |
| DesignLights Consortium (DLC) listed (Classification: Standard) |                                  |                        |          |                              |                         |                         |          |
| UL certified E473804  |                                  |                        |          |                              |                         |                         |          |

PACKAGE CONTENTS:

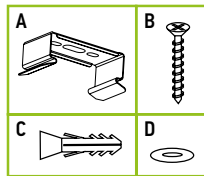
| Description                      | Q-ty |
|----------------------------------|------|
| LED Seamless Vapor Proof Fixture | 1    |
| Mounting bracket (A)             | 2    |

A

B

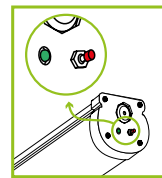
## PACKAGE CONTENTS:

| Description                      | Q-ty |
|----------------------------------|------|
| LED Seamless Vapor Proof Fixture | 1    |
| Mounting bracket (A)             | 2    |
| Mounting screws (B)              | 4    |
| Plastic anchor (C)               | 4    |
| Flat washer (D)                  | 4    |
| Box                              | 1    |



## BUILT-IN BATTERY BACK-UP INFORMATION

| Specifications           | Model: BLD-CM20H-1500400                 |
|--------------------------|--|
| Input voltage            | 100-277 V 50/60 Hz                       |
| Warranty                 | 5 Years                                  |
| Indicator light          | Illuminated test switch, indicator light |
| Battery                  | Li-ion                                   |
| Battery charging current | 250 mA                                   |
| Charging time            | ≥ 24 Hours                               |



**Test button operation:** Press test button to change from charging mode to emergency mode. Release test button to go back to the normal mode.

**Back-up mode operation:** When green light is on, back-up battery is charging in AC mode. When it detects AC power outage, fixture will switch to back-up mode and indicator light will turn off.

| Model                   | Battery capacity | Max emergency output power | EM lumens | Emergency current | Emergency operation time | Battery voltage | Full charge/discharge cycles |
|-------------------------|------------------|----------------------------|-----------|-------------------|--------------------------|-----------------|------------------------------|
| ASD-LVP2SM-4A56AC-10EM  | 3,000 mA * 4     | 10W                        | 1,246 lm  | 80 mA             | ≥ 90 minutes             | 7.4 V           | 500 cycles                   |
| ASD-LVP2SM-8A120AC-20EM | 4,000 mA * 6     | 20W                        | 2,301 lm  | 170 mA            | ≥ 90 minutes             | 11.1 V          | 500 cycles                   |

For most up-to-date spec sheets please refer to [asd-lighting.com](http://asd-lighting.com)

ASD LIGHTING CORP

E-mail: [orders@asd-lighting.com](mailto:orders@asd-lighting.com) | Web site: [www.asd-lighting.com](http://www.asd-lighting.com)





# LED SEAMLESS VAPOR PROOF FIXTURE

## INSTALLATION GUIDE

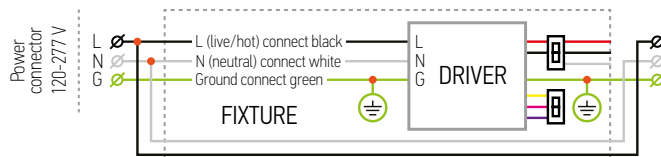
### IMPORTANT SAFETY INFORMATION:

Please read all the instructions below before installation.

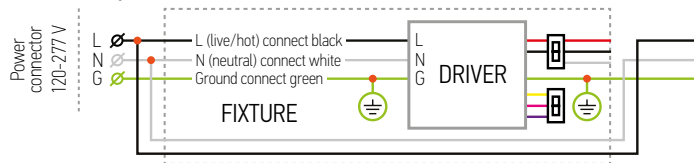
- Make sure that the supply voltage corresponds to the rated product voltage.
- The product must be installed by a qualified electrician in accordance with the National Electrical Code and corresponding local codes.
- If the product is damaged, do not use it.
- All wiring connections should be capped with UL approved wire connectors.
- For surface mount there are two stainless steel brackets included.
- This fixture is intended to be connected to a properly installed and grounded UL listed junction box with suitable strain relief means for power cord. The junction box is not included, should be purchased separately.

### ELECTRICAL SCHEMATIC DIAGRAM:

LVP2SM



LVP2SM multiple fixture connection



### ⚠ WARNING

**RISK OF PERSONAL INJURY – READ and follow all WARNINGS and installation instructions.** Keep or give to the owner for future reference.

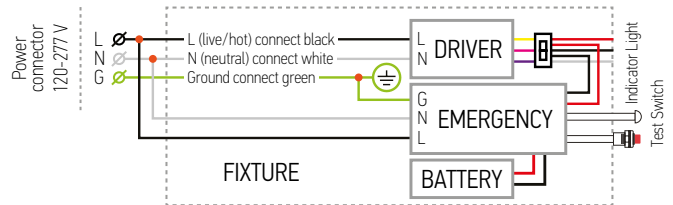
**Risk of cuts:** Wear gloves to prevent cuts or abrasions when removing from carton, handling, installing, and maintaining this product.

**Risk of electric shock:** This product must be installed in accordance with the applicable installation code by a person familiar with the construction and operation of the product and the hazards involved.

**Risk of Fire:** Minimum 194°F supply conductors. Consult a qualified electrician to ensure correct branch circuit conductor.

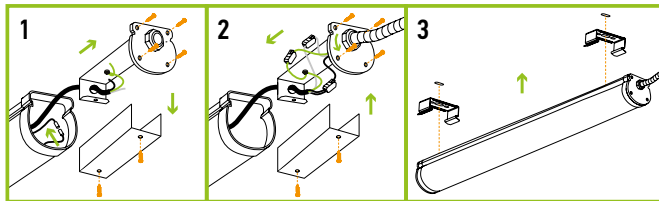
ASD® assumes no responsibility for claims arising out of improper or careless Installation or handling of this product.

LVP2SM-EM with battery back-up



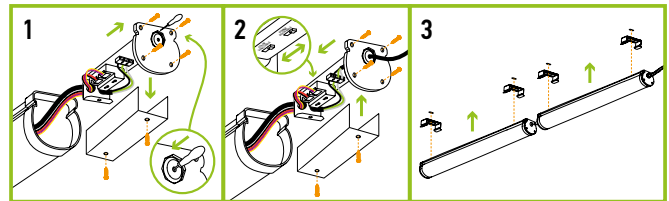
### INSTALLATION STEPS:

- Remove the four screws off of the end-cap. Pull out the end-cap along with the junction box. Remove the cover of the junction box. The battery back-up will be unplugged when received, plug in battery back-up and the fixture using connector.
- Insert the power cord into the junction box. Connect the wires: Black to Black, White to White, Green to Green. Choose power output and color temperature needed using the switch. Close the cover of the junction box, insert it back into the fixture, tighten the screws of the end-cap.
- Secure the fixture to the ceiling/wall with mounting brackets.



### CONNECTING MULTIPLE FIXTURES:

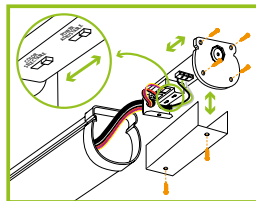
- Remove the four screws off of the end-cap, pull out the end-cap along with the junction box, remove the cover of the junction box and remove the small cut-hole in the gasket.
- Insert the power cord from the other fixture into the junction box. Connect the wires: Black to Black, White to White, Green to Green. Choose power output and color temperature using the switch. Close the cover of the junction box, insert it back into the fixture, tighten the screws of the end-cap.
- Secure the fixtures to the ceiling/wall with mounting brackets.



\* Multiple fixtures with different sizes and wattages can be linked together, the total wattage must not exceed 500W (120V) / 1200W (277V).

### POWER AND COLOR TEMPERATURE SETTINGS:

Open the end-cap on the gasket side, pull out and open the junction box and use the switch to adjust power output and color temperature. Then, close junction box, slide it back into the fixture and tighten the screws on the end-cap.



For most up-to-date spec sheets please refer to [asd-lighting.com](http://asd-lighting.com)

ASD LIGHTING CORP

E-mail: [orders@asd-lighting.com](mailto:orders@asd-lighting.com) | Web site: [www.asd-lighting.com](http://www.asd-lighting.com)

