



LED STEP LIGHT

► **DESIGN** - LED STEP LIGHT has a sleek, low-profile design with no visible hardware, allowing it to seamlessly blend into any setting. Durable waterproof housing resistant to rust and can be used indoor and outdoor for all weather conditions. It is designed to operate on 120V circuits.

► **COLOR SELECTABLE** - You can choose either a 3,000K warm white, 4,000K cool white or 5,000K daylight color temperature.

► **PHOTOCELL** - The built-in Dusk to Dawn Photocell will automatically turn the fixture on/off depending on the time of day.

► **MOTION SENSOR** - The built-in motion sensor will turn off the fixture automatically when no motion is detected.

► **PHOTOCELL AND MOTION SENSOR** - When motion is detected the built-in motion sensor turns on the fixture. During the daytime the preinstalled PC deactivates the motion sensor.

► **APPLICATION** - This fixture is rated for Wet Locations, making it perfect for indoor and outdoor projects such as stairways, pathways, corridors, walkways, building perimeters or anywhere else landscape lighting is required.

► **ADVANTAGES** - With a lifespan of 50,000 hours, these fixtures are made to last decades under normal operation! ASD provides a 5-year limited warranty along with ETL certification to guarantee top quality products and safety!

Catalog number	
Notes	
Type	



Finish:	White
	Bronze
	Black



Model	Watts	Voltage	Dimmable	Lumens	CCT	Finish	Dimensions (LxWxH)	Option
ASD-LSTL-H01W-D3CC-WH	3W	120 V	TRIAC	98/103/114 lm	3CCT (3,000/4,000/5,000 K)	White	4-3/4" x 1-9/16" x 2-13/16"	-
ASD-LSTL-H01W-D3CC-WH-4PACK	3W	120 V	TRIAC	98/103/114 lm	3CCT (3,000/4,000/5,000 K)	White	4-3/4" x 1-9/16" x 2-13/16"	-
ASD-LSTL-H01W-D3CC-BZ	3W	120 V	TRIAC	98/103/114 lm	3CCT (3,000/4,000/5,000 K)	Oil rubbed bronze	4-3/4" x 1-9/16" x 2-13/16"	-
ASD-LSTL-H01W-D3CC-BZ-4PACK	3W	120 V	TRIAC	98/103/114 lm	3CCT (3,000/4,000/5,000 K)	Oil rubbed bronze	4-3/4" x 1-9/16" x 2-13/16"	-
ASD-LSTL-H01W-D3CC-BK	3W	120 V	TRIAC	98/103/114 lm	3CCT (3,000/4,000/5,000 K)	Black	4-3/4" x 1-9/16" x 2-13/16"	-
ASD-LSTL-H01W-D3CC-BK-4PACK	3W	120 V	TRIAC	98/103/114 lm	3CCT (3,000/4,000/5,000 K)	Black	4-3/4" x 1-9/16" x 2-13/16"	-
LSTL-MS WITH MOTION SENSOR								
ASD-LSTL-H01W-N3CC-MS-WH	3W	120 V	-	98/103/114 lm	3CCT (3,000/4,000/5,000 K)	White	4-3/4" x 1-3/4" x 2-13/16"	Motion sensor
ASD-LSTL-H01W-N3CC-MS-BZ	3W	120 V	-	98/103/114 lm	3CCT (3,000/4,000/5,000 K)	Oil rubbed bronze	4-3/4" x 1-3/4" x 2-13/16"	Motion sensor
ASD-LSTL-H01W-N3CC-MS-BK	3W	120 V	-	98/103/114 lm	3CCT (3,000/4,000/5,000 K)	Black	4-3/4" x 1-3/4" x 2-13/16"	Motion sensor
LSTL-PC WITH PHOTOCELL								
ASD-LSTL-H01W-N3CC-PC-WH	3W	120 V	-	98/103/114 lm	3CCT (3,000/4,000/5,000 K)	White	4-3/4" x 1-9/16" x 2-13/16"	Photocell
ASD-LSTL-H01W-N3CC-PC-BZ	3W	120 V	-	98/103/114 lm	3CCT (3,000/4,000/5,000 K)	Oil rubbed bronze	4-3/4" x 1-9/16" x 2-13/16"	Photocell
ASD-LSTL-H01W-N3CC-PC-BK	3W	120 V	-	98/103/114 lm	3CCT (3,000/4,000/5,000 K)	Black	4-3/4" x 1-9/16" x 2-13/16"	Photocell
LSTL-PC-MS WITH MOTION SENSOR AND PHOTOCELL								
ASD-LSTL-H01W-N3CC-PC-MS-WH	3W	120 V	-	98/103/114 lm	3CCT (3,000/4,000/5,000 K)	White	4-3/4" x 1-3/4" x 2-13/16"	Motion sensor, Photocell
ASD-LSTL-H01W-N3CC-PC-MS-BZ	3W	120 V	-	98/103/114 lm	3CCT (3,000/4,000/5,000 K)	Oil rubbed bronze	4-3/4" x 1-3/4" x 2-13/16"	Motion sensor, Photocell
ASD-LSTL-H01W-N3CC-PC-MS-BK	3W	120 V	-	98/103/114 lm	3CCT (3,000/4,000/5,000 K)	Black	4-3/4" x 1-3/4" x 2-13/16"	Motion sensor, Photocell

For most up-to-date spec sheets please refer to asd-lighting.com

ASD LIGHTING CORP

E-mail: orders@asd-lighting.com | Web site: www.asd-lighting.com





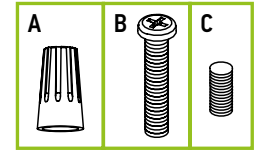
LED STEP LIGHT

PRODUCT SPECIFICATIONS:

Construction & Materials				
Housing	Aluminum			
Lens	Acrylic			
Finish	White, Oil rubbed bronze, Black			
Weight	ASD-LSTL-H01W-D3CC-WH	0.3 lbs (0.1 kg)	0.3 lbs (0.1 kg)	
	ASD-LSTL-H01W-D3CC-WH-4PACK	1.3 lbs (0.6 kg)		
	ASD-LSTL-H01W-D3CC-BZ	0.3 lbs (0.1 kg)		
	ASD-LSTL-H01W-D3CC-BZ-4PACK	1.3 lbs (0.6 kg)		
	ASD-LSTL-H01W-D3CC-BK	0.3 lbs (0.1 kg)		
	ASD-LSTL-H01W-D3CC-BK-4PACK	1.3 lbs (0.6 kg)		
	ASD-LSTL-H01W-N3CC-MS-WH			
	ASD-LSTL-H01W-N3CC-MS-BZ			
	ASD-LSTL-H01W-N3CC-MS-BK			
	ASD-LSTL-H01W-N3CC-PC-WH			
	ASD-LSTL-H01W-N3CC-PC-BZ			
	ASD-LSTL-H01W-N3CC-PC-BK			
	ASD-LSTL-H01W-N3CC-PC-MS-WH			
	ASD-LSTL-H01W-N3CC-PC-MS-BZ			
ASD-LSTL-H01W-N3CC-PC-MS-BK				
Environmental system				
Work environment	Suitable for Wet Locations			
Operating temperature	ASD-LSTL-H01W-D3CC-WH	-40°F to 113°F (-40°C to 45°C)	-4°F to 113°F (-20°C to 45°C)	
	ASD-LSTL-H01W-D3CC-WH-4PACK			
	ASD-LSTL-H01W-D3CC-BZ			
	ASD-LSTL-H01W-D3CC-BZ-4PACK			
	ASD-LSTL-H01W-D3CC-BK			
	ASD-LSTL-H01W-D3CC-BK-4PACK			
	ASD-LSTL-H01W-N3CC-MS-WH			
	ASD-LSTL-H01W-N3CC-MS-BZ			
	ASD-LSTL-H01W-N3CC-MS-BK			
	ASD-LSTL-H01W-N3CC-PC-WH			
	ASD-LSTL-H01W-N3CC-PC-BZ			
	ASD-LSTL-H01W-N3CC-PC-BK			
	ASD-LSTL-H01W-N3CC-PC-MS-WH			
	ASD-LSTL-H01W-N3CC-PC-MS-BZ			
ASD-LSTL-H01W-N3CC-PC-MS-BK				
L-70 Life	> 50,000 hrs			
Optical system				
Luminous flux	98/103/114 lm			
Color temperature	3CCT switch (3,000/4,000/5,000 K), 3,000 K by default			
CRI	> 80			
Electrical system				
Input voltage	120 V			
Max input current	0.63 A			
Inrush current (Action time)	0.02 A (0.02 S)			
Off state power	0W			
Power consumption	3W			
Power factor	> 0.9			
Output voltage	12-20 V			
Max output current	0.14 A			
Surge protection DM/CM	1.25 kV / 1.25 kV			
Dimming range				
10-100%				
Dimming compatible controls				
Brand	Lutron		Leviton	
Models	MACL-153MLH-WH	DVCL-153PR	R02-DW6HD-2RW	DSL06
	STCL-153PH-WH	P-PKG1W	R00-RNL06-0TW	
	PD-6WCL-WH-R		R68-06674-POT	
Regular and voluntary certifications				
5-year limited warranty				
cETL us certified 4001256				

PACKAGE CONTENTS:

Description	Q-ty
LED Step Light	1 (4 for 4pack)
Wire nut (A)	3
Screw (B)	2
Hexagon screw (C)	1
Box	1



BUILT-IN MOTION SENSOR INFORMATION



The fixtures with built-in PIR motion sensor automatically turn off in the absence of motion.

- The light is ON for 30 seconds after a motion is detected
- Max. detection range 13 ft (4m).

Specifications	Model: D203S
Operating voltage	3-15 V
Hold time	30 S
Operating temperature	- 86°F to 158°F (-30°C to 70°C)

BUILT-IN PHOTOCELL INFORMATION



The fixtures with a built-in photocell automatically turn off during daylight hours.

- The light is always ON when luminance is < 90 lux (night time).
- The light is always OFF when luminance is > 90 lux (day time).

Specifications	Model: PT3A4.B
Operating voltage	30 V
Hold time	30 S
Operating temperature	- 86°F to 185°F (-30°C to 85°C)

BUILT-IN MOTION SENSOR AND PHOTOCELL INFORMATION



The fixtures with a motion sensor and a built-in Dusk-to-Dawn sensor automatically turn off the motion sensor during daylight hours regardless of motion detection.

- The light is ON when luminance is < 90 lux (night time) and remains on for 30 seconds after a motion is detected.
- The light is always OFF when luminance is > 90 lux (day time).
- Max. detection range 26 ft.

Specifications	Model: D203S	Model: PT3A4.B
Operating voltage	3-15 V	30 V
Hold time	30 S	30 S
Operating temperature	- 86°F to 158°F (-30°C to 70°C)	- 86°F to 185°F (-30°C to 85°C)

For most up-to-date spec sheets please refer to asd-lighting.com



LED STEP LIGHT

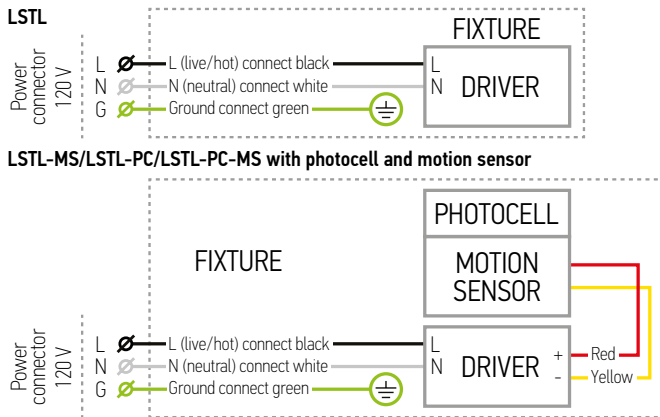
INSTALLATION GUIDE

IMPORTANT SAFETY INFORMATION:

Please read all the instructions below before installation.

- ▶ Make sure that the supply voltage corresponds to the rated product voltage.
- ▶ The product must be installed by a qualified electrician in accordance with the National Electrical Code and corresponding local codes.
- ▶ If the product is damaged, do not use it.

ELECTRICAL SCHEMATIC DIAGRAM:



⚠ WARNING

RISK OF PERSONAL INJURY – READ and follow all WARNINGS and installation instructions. Keep or give to the owner for future reference.

Risk of cuts: Wear gloves to prevent cuts or abrasions when removing from carton, handling, installing, and maintaining this product.

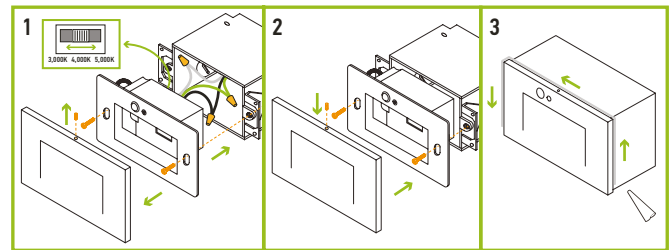
Risk of electric shock: This product must be installed in accordance with the applicable installation code by a person familiar with the construction and operation of the product and the hazards involved.

Risk of Fire: Minimum 194°F supply conductors. Consult a qualified electrician to ensure correct branch circuit conductor.

ASD® assumes no responsibility for claims arising out of improper or careless Installation or handling of this product.

INSTALLATION STEPS:

1. Use a screwdriver to loosen the screws securing the front cover and to disassemble the face plate. Choose either 3,000K, 4,000K, or 5,000K with a simple switch. Pull the supply wires out from the outlet box. Connect the wires: Black to Black, White to White, Green to Green. Secure the connection with wire nuts. Tuck all the wires back inside the outlet box.
2. Attach the mounting bracket to the outlet box using screws. Place the face plate on the mounting bracket and affix with the hexagon screw.
3. For outdoor locations please use silicone (not included) as shown in the picture below.



ORDERING INFORMATION

Model	UPC	Pcs. per carton	Carton size	Carton weight	GTIN 14
ASD-LSTL-H01W-D3CC-WH	810050736381	12	12" x 6.1" x 8.9"	5.8 lbs	30810050736382
ASD-LSTL-H01W-D3CC-WH-4PACK	810050737715	3	10.6" x 7.7" x 6.9"	4.5 lbs	10810050737712
ASD-LSTL-H01W-D3CC-BZ	810050736374	12	12" x 6.1" x 8.9"	5.8 lbs	30810050736375
ASD-LSTL-H01W-D3CC-BZ-4PACK	810050737708	3	10.6" x 7.7" x 6.9"	4.5 lbs	10810050737705
ASD-LSTL-H01W-D3CC-BK	810050737685	12	12" x 6.1" x 8.9"	5.8 lbs	10810050737682
ASD-LSTL-H01W-D3CC-BK-4PACK	810050737692	3	10.6" x 7.7" x 6.9"	4.5 lbs	10810050737699
LSTL-MS WITH MOTION SENSOR					
ASD-LSTL-H01W-N3CC-MS-WH	810128112468	4	8.3" x 6.1" x 6.1"	2.1 lbs	10810128112465
ASD-LSTL-H01W-N3CC-MS-BZ	810050736404	4	8.3" x 6.1" x 6.1"	2.1 lbs	30810050736405
ASD-LSTL-H01W-N3CC-MS-BK	810050737739	4	8.3" x 6.1" x 6.1"	2.1 lbs	10810050737736
LSTL-PC WITH PHOTOCELL					
ASD-LSTL-H01W-N3CC-PC-WH	810128112451	4	8.3" x 6.1" x 6.1"	2.1 lbs	10810128112458
ASD-LSTL-H01W-N3CC-PC-BZ	810050736398	4	8.3" x 6.1" x 6.1"	2.1 lbs	30810050736399
ASD-LSTL-H01W-N3CC-PC-BK	810050737722	4	8.3" x 6.1" x 6.1"	2.1 lbs	10810050737729
LSTL-PC-MS WITH MOTION SENSOR AND PHOTOCELL					
ASD-LSTL-H01W-N3CC-PC-MS-WH	810128112475	4	8.3" x 6.1" x 6.1"	2.1 lbs	10810128112472
ASD-LSTL-H01W-N3CC-PC-MS-BZ	810050736411	4	8.3" x 6.1" x 6.1"	2.1 lbs	30810050736412
ASD-LSTL-H01W-N3CC-PC-MS-BK	810050737746	4	8.3" x 6.1" x 6.1"	2.1 lbs	10810050737743

For most up-to-date spec sheets please refer to asd-lighting.com

ASD LIGHTING CORP

E-mail: orders@asd-lighting.com | Web site: www.asd-lighting.com

