



LED SQUARE DOWNLIGHT with Junction box

► **DESIGN & OPTIONS** - LED SQUARE DOWNLIGHT WITH JUNCTION BOX has a classic, low-profile design with a baffle trim that allows you to have a stylish look with efficient lighting. Smooth dimming capabilities ranging from 100% to 10% with modern LED dimmers allow you to control the look and feel of your space. You can choose either 3,000K, 4,000K or 5,000K color temperature. The 120° beam angle grants you smooth and even lighting.

► **INSTALLATION** - This fixture has an integrated J-box, making installation quick and easy. It has everything you need in one set. Just cut out the template, connect the J-box wiring on the back of the recessed downlight to your light switch, and place it into your ceiling. Spring-loaded clips ensure a snug fit to the surface. This fixture is IC rated so there is no can or any other housing required. Refer to install instructions for detailed steps.

► **APPLICATION** - Install the fixture to the ceiling for bright light in your family room, bedroom, hallways, corridors, or any other common areas in your living space. It is also suitable for Wet locations, making it perfect for kitchen and bathroom lighting as well. You could also use it as a complimentary light to an existing ceiling light.

► **ENERGY SAVINGS & EFFICIENCY** - Replacing an incandescent bulb with the LED SQUARE DOWNLIGHT WITH JUNCTION BOX can save you up to 8 times as much on your current energy costs. With a lifespan of 50,000 hours, these fixtures are made to last decades under normal operation! This fixture will save you a significant amount of money in its lifetime.

► **CERTIFICATION & WARRANTY** - Buy with confidence: ASD provides a 5-year warranty along with ETL and ENERGY STAR certifications to guarantee top quality products and safety!

Top US certifications allow participation in rebates; please check the rebate programs available in your state

Catalog number	
Notes	
Type	



PRODUCT LEGEND:

Family	Size	Dimmable	Watts	CCT	Finish
ASD-LDLOBS	X	X	XX	XX	XX
LED Square Downlight with Junction box	4 = 4 inch 6 = 6 inch	D = Dimmable	10 = 10 W 15 = 15 W	30 = 3,000 K 40 = 4,000 K 50 = 5,000 K	WH = White

LED SQUARE DOWNLIGHT WITH JUNCTION BOX:

Model	Size	Watts	Voltage	Dimmable	CCT	Lumens	Dimensions (LxWxH)
ASD-LDLOBS-4D1030-WH	4 inch	10 W	120 V	TRIAC	3,000 K	650 lm	5" x 5" x 3 7/8"
ASD-LDLOBS-4D1040-WH	4 inch	10 W	120 V	TRIAC	4,000 K	650 lm	5" x 5" x 3 7/8"
ASD-LDLOBS-4D1050-WH	4 inch	10 W	120 V	TRIAC	5,000 K	650 lm	5" x 5" x 3 7/8"
ASD-LDLOBS-6D1530-WH	6 inch	15 W	120 V	TRIAC	3,000 K	950 lm	7 3/8" x 7 3/8" x 3 5/8"
ASD-LDLOBS-6D1540-WH	6 inch	15 W	120 V	TRIAC	4,000 K	950 lm	7 3/8" x 7 3/8" x 3 5/8"
ASD-LDLOBS-6D1550-WH	6 inch	15 W	120 V	TRIAC	5,000 K	950 lm	7 3/8" x 7 3/8" x 3 5/8"

ORDERING INFORMATION:

Model	UPC	Pcs. per Carton	Carton Size	Carton Weight	GTIN 14
ASD-LDLOBS-4D1030-WH	810050732406	12	13.4" x 12.8" x 12"	11.7 lb	30810050732407
ASD-LDLOBS-4D1040-WH	810050732413	12	13.4" x 12.8" x 12"	11.7 lb	30810050732414
ASD-LDLOBS-4D1050-WH	810050732420	12	13.4" x 12.8" x 12"	11.7 lb	30810050732421
ASD-LDLOBS-6D1530-WH	810050732437	12	16.7" x 12.4" x 15.9"	15.7 lb	30810050732438
ASD-LDLOBS-6D1540-WH	810050732444	12	16.7" x 12.4" x 15.9"	15.7 lb	30810050732445
ASD-LDLOBS-6D1550-WH	810050732451	12	16.7" x 12.4" x 15.9"	15.7 lb	30810050732452

For most up-to-date spec sheets please refer to asd-lighting.com

ASD LIGHTING CORP

E-mail: orders@asd-lighting.com | Web site: www.asd-lighting.com





LED SQUARE DOWNLIGHT with Junction box

PRODUCT SPECIFICATIONS:

Construction & Materials				Electrical System			
Housing	Aluminum, PC			Input Voltage	120 V		
Lens	Acrylic			Max input current	ASD-LDLOBS-4D1030-WH	0.1 A	
Finish Color	White				ASD-LDLOBS-4D1040-WH		
Weight	ASD-LDLOBS-4D1030-WH	0.6 lb (0.3 kg)			ASD-LDLOBS-4D1050-WH		
	ASD-LDLOBS-4D1040-WH						
	ASD-LDLOBS-6D1530-WH				0.15 A		
	ASD-LDLOBS-6D1540-WH						
	ASD-LDLOBS-6D1550-WH	1 lb (0.5 kg)		ASD-LDLOBS-6D1550-WH			
Environmental System				Inrush current (Action time)	0.2 A (0.03 S)		
Work Environment	Suitable for Wet Locations			AC input range	min 108 V max 132 V		
Operating Temperature	-13°F to 113°F (-25°C to 45°C)			Off State Power	0 W		
L-70 Life	> 50,000 hrs			Power Consumption	ASD-LDLOBS-4D1030-WH	10 W	
Optical System					ASD-LDLOBS-4D1040-WH		
Luminous Flux	ASD-LDLOBS-4D1030-WH	650 lm			ASD-LDLOBS-4D1050-WH		
	ASD-LDLOBS-6D1530-WH						
	ASD-LDLOBS-6D1540-WH				15 W		
	ASD-LDLOBS-6D1550-WH						
	ASD-LDLOBS-6D1550-WH	950 lm					
Color Temperature	3,000 K; 4,000 K; 5,000 K			Power Factor	> 0.9		
CRI	> 90			Output voltage	132 V		
Control				Max output current	ASD-LDLOBS-4D1030-WH	60 mA	
Dimming Range	10-100%				ASD-LDLOBS-4D1040-WH		
Dimming compatible controls					ASD-LDLOBS-4D1050-WH		
Brand	Lutron	SLV-600P-WH	Leviton		ASD-LDLOBS-6D1530-WH	90 mA	
Models	DVCL-153P-WH	6672	6674		ASD-LDLOBS-6D1540-WH		
	MACL-153M-WH	CT-603PG	0B33K1	6631	ASD-LDLOBS-6D1550-WH		
	S-600P	S-603P	1E1205				
	DVLY-603P-IV	DV-600P	1F4205				
	CTCL-153PDH	DVW-603PGH-WH	6633-P				
				LED Driver Class	DOB		
				Regular and Voluntary Certifications			
				5-year limited warranty	cETLus certified 4008281	Energy Star listed	

INSTALLATION GUIDE

IMPORTANT SAFETY INFORMATION:

Please read all the instructions below before installation.

- ▶ Make sure that the supply voltage corresponds to the rated product voltage.
- ▶ The product must be installed by a qualified electrician in accordance with the National Electrical Code and corresponding local codes.
- ▶ If the product is damaged, do not use it.

⚠ WARNING

RISK OF PERSONAL INJURY – READ and follow all WARNINGS and installation instructions.

Keep or give to the owner for future reference.

Risk of cuts: Wear gloves to prevent cuts or abrasions when removing from carton, handling, installing, and maintaining this product.

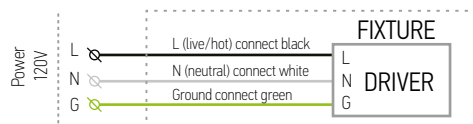
Risk of electric shock: This product must be installed in accordance with the applicable installation code by a person familiar with the construction and operation of the product and the hazards involved.

Risk of Fire: Minimum 194°F supply conductors. Consult a qualified electrician to ensure correct branch circuit conductor.



ASD® assumes no responsibility for claims arising out of improper or careless installation or handling of this product.

For recessed installation: Access above ceiling required. Inherently protected. Vapor barrier must be suitable for 194°F

ELECTRICAL SCHEMATIC DIAGRAM:



PACKAGE CONTENTS:

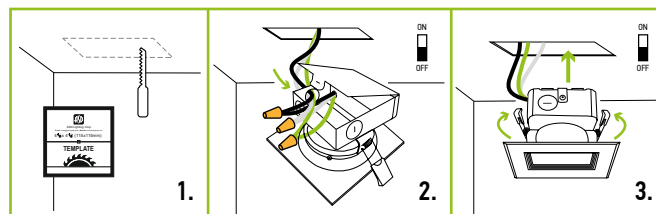
Description	Q-ty	
LED Square Downlight with Junction box	1	A 
Wire Nut (A)	3	
Template (B)	1	B 
Box	1	
Cut sheet	2	

TEMPLATE:

Model	Fixture size	Rec. holes
4 inch	5"	4 1/2" x 4 1/2"
6 inch	7 3/8"	6 11/16" x 6 11/16"

INSTALLATION STEPS:

1. Use template to cut an appropriate sized hole.
2. Open the junction box. Connect the wires: Black to Black, White to White, Green to Green. Secure the connection with wire nuts. Tuck all the wires back into junction box and close it.
3. Push the spring loaded clips upwards and insert the fixture base into the mounting hole. Release the clips and the fixture will be "pulled" into place against the ceiling. Once assembly is complete, turn the power on to ensure the fixture is operating properly.



For most up-to-date spec sheets please refer to asd-lighting.com