



LED UNDER CABINET BULLNOSE

► **DESIGN & OPTIONS** - LED UNDER CABINET BULLNOSE LIGHT with a CRI 90+ it is perfect for a hidden backlight. They have smooth dimming capabilities ranging from 100% to 10% with modern LED dimmers. This fixture is also color adjustable letting you go from 3000K, to 4000K, to 5000K with a simple switch. It comes in 9", 12", 18", 24", 32", 40" and 48" sizes with a WHITE finish.

► **INSTALLATION** - Hardwiring these fixtures is both quick and easy. For your convenience we provide a Romex connector and screws. Refer to install instructions for detailed steps.

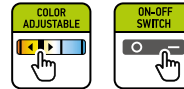
► **APPLICATION** - These LED UNDER CABINET BULLNOSE LIGHTS are an ideal maintenance-free solution for residential and commercial installations. They create a cozy ambience that is perfect for your family room, bedroom, cabinet or any other common area in your living space. They are also suitable for Damp locations making them perfect for kitchens as well. You could also use them as a complimentary light to an already existing main light.

► **ENERGY SAVING & EFFICIENCY** - Replacing an incandescent fixture with the LED UNDER CABINET BULLNOSE LIGHT can save you up to 8 times as much on your energy costs. With a lifespan of 50,000 hours, these fixtures are made to last decades under normal operation! This fixture will save you a significant amount of money in its lifetime.

► **CERTIFICATION & WARRANTY** - Buy with confidence: ASD provides a 5-year warranty along with ETL and ENERGY STAR certifications to guarantee top quality products and safety!

Top US certifications allow participation in rebates; please check the rebate programs available in your state.

| | |
|----------------|--|
| Catalog number | |
| Notes | |
| Type | |



PRODUCT LEGEND:

| Family | Size | Dimmable | Watts | CCT | Finish |
|----------------------------|--------------|--------------|-----------|--------------------------|------------|
| ASD-UCB | XX | X | X | XX | XX |
| LED Under Cabinet Bullnose | 9 = 9 inch | D = Dimmable | 3 = 3 W | CC = 3,000/4,000/5,000 K | WH = White |
| | 12 = 12 inch | | 5 = 5 W | | |
| | 18 = 18 inch | | 8 = 8 W | | |
| | 24 = 24 inch | | 12 = 12 W | | |
| | 32 = 32 inch | | 16 = 16 W | | |
| | 40 = 40 inch | | 20 = 20 W | | |
| | 48 = 48 inch | | 24 = 24 W | | |

LED UNDER CABINET BULLNOSE:

| Model | Size | Watts | Voltage | Dimmable | Lumens | CCT | Finish | Dimensions (LxWxH) |
|--------------------|---------|-------|---------|----------|----------|---------------------|--------|-----------------------|
| ASD-UCB-9D3CC-WH | 9 inch | 3 W | 120 V | TRIAC | 187 lm | 3,000/4,000/5,000 K | White | 9" x 3 5/8" x 1 1/8" |
| ASD-UCB-12D5CC-WH | 12 inch | 5 W | 120 V | TRIAC | 302 lm | 3,000/4,000/5,000 K | White | 12" x 3 5/8" x 1 1/8" |
| ASD-UCB-18D8CC-WH | 18 inch | 8 W | 120 V | TRIAC | 655 lm | 3,000/4,000/5,000 K | White | 18" x 3 5/8" x 1 1/8" |
| ASD-UCB-24D12CC-WH | 24 inch | 12 W | 120 V | TRIAC | 769 lm | 3,000/4,000/5,000 K | White | 24" x 3 5/8" x 1 1/8" |
| ASD-UCB-32D16CC-WH | 32 inch | 16 W | 120 V | TRIAC | 985 lm | 3,000/4,000/5,000 K | White | 32" x 3 5/8" x 1 1/8" |
| ASD-UCB-40D20CC-WH | 40 inch | 20 W | 120 V | TRIAC | 1,454 lm | 3,000/4,000/5,000 K | White | 40" x 3 5/8" x 1 1/8" |
| ASD-UCB-48D24CC-WH | 48 inch | 24 W | 120 V | TRIAC | 1,630 lm | 3,000/4,000/5,000 K | White | 48" x 3 5/8" x 1 1/8" |

For most up-to-date spec sheets please refer to asd-lighting.com



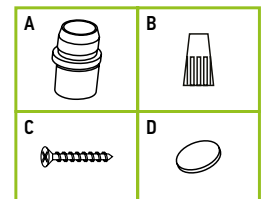
LED UNDER CABINET BULLNOSE

PRODUCT SPECIFICATIONS:

| Construction & Materials | | | | |
|--------------------------------------|-------------------------------|-----------------|--------------------|-----------------|
| Housing | Aluminium | | | |
| Lens | Plastic | | | |
| Finish Color | White | | | |
| Weight | ASD-UCB-9D3CC-WH | 0.7 lb (0.3 kg) | ASD-UCB-32D16CC-WH | 2 lb (0.9 kg) |
| | ASD-UCB-12D5CC-WH | 0.9 lb (0.4 kg) | ASD-UCB-40D20CC-WH | 2.4 lb (1.1 kg) |
| | ASD-UCB-18D8CC-WH | 1.2 lb (0.6 kg) | ASD-UCB-48D24CC-WH | 2.8 lb (1.3 kg) |
| | ASD-UCB-24D12CC-WH | 1.6 lb (0.7 kg) | | |
| Environmental System | | | | |
| Work Environment | Suitable for Damp Locations | | | |
| Operating Temperature | -4°F to 113°F (-20°C to 45°C) | | | |
| L-70 Life | > 50,000 hrs | | | |
| Optical System | | | | |
| Luminous Flux | ASD-UCB-9D3CC-WH | 187 lm | ASD-UCB-32D16CC-WH | 985 lm |
| | ASD-UCB-12D5CC-WH | 302 lm | ASD-UCB-40D20CC-WH | 1,454 lm |
| | ASD-UCB-18D8CC-WH | 655 lm | ASD-UCB-48D24CC-WH | 1,630 lm |
| | ASD-UCB-24D12CC-WH | 769 lm | | |
| Color Temperature | 3,000/4,000/5,000 K | | | |
| CRI | > 90 | | | |
| Electrical System | | | | |
| Input Voltage | 120 V | | | |
| Max input current | ASD-UCB-9D3CC-WH | 0.03 A | ASD-UCB-32D16CC-WH | 0.165 A |
| | ASD-UCB-12D5CC-WH | 0.05 A | ASD-UCB-40D20CC-WH | 0.21 A |
| | ASD-UCB-18D8CC-WH | 0.082 A | ASD-UCB-48D24CC-WH | 0.23 A |
| | ASD-UCB-24D12CC-WH | 0.12 A | | |
| Inrush current (Action time) | ASD-UCB-9D3CC-WH | 0.03 A (1 S) | ASD-UCB-32D16CC-WH | 0.165 A (1 S) |
| | ASD-UCB-12D5CC-WH | 0.05 A (1 S) | ASD-UCB-40D20CC-WH | 0.21 A (1 S) |
| | ASD-UCB-18D8CC-WH | 0.082 A (1 S) | ASD-UCB-48D24CC-WH | 0.23 A (1 S) |
| | ASD-UCB-24D12CC-WH | 0.12 A (1 S) | | |
| AC input range | min 108 V max 132 V | | | |
| Off State Power | 0 W | | | |
| Power Consumption | ASD-UCB-9D3CC-WH | 3 W | ASD-UCB-32D16CC-WH | 16 W |
| | ASD-UCB-12D5CC-WH | 5 W | ASD-UCB-40D20CC-WH | 20 W |
| | ASD-UCB-18D8CC-WH | 8 W | ASD-UCB-48D24CC-WH | 24 W |
| | ASD-UCB-24D12CC-WH | 12 W | | |
| Power Factor | > 0.9 | | | |
| Max output current | ASD-UCB-9D3CC-WH | 0.024 A | ASD-UCB-32D16CC-WH | 0.126 A |
| | ASD-UCB-12D5CC-WH | 0.039 A | ASD-UCB-40D20CC-WH | 0.158 A |
| | ASD-UCB-18D8CC-WH | 0.064 A | ASD-UCB-48D24CC-WH | 0.19 A |
| | ASD-UCB-24D12CC-WH | 0.095 A | | |
| Dimming range | | | | |
| 10-100% | | | | |
| Dimming compatible controls | | | | |
| Brand | Lutron | | | |
| Models | DV-603PG-WH | DV-600P | MACL-153M | |
| | DVCL-153P | DVL-600P | PD-6WCL-WH | |
| Regular and Voluntary Certifications | | | | |
| 5-year limited warranty | | | | |
| cETLus certified | | | | |
| Energy Star listed | | | | |

PACKAGE CONTENTS:

| Description | Q-ty |
|----------------------------|------|
| LED Under Cabinet Bullnose | 1 |
| Romex Connection (A) | 1 |
| Wire Nuts (B) | 3 |
| Screws (C) | 2 |
| Screws cap (D) | 2 |
| Box | 1 |
| Cut sheet | 2 |



For most up-to-date spec sheets please refer to asd-lighting.com

ASD LIGHTING CORP

E-mail: orders@asd-lighting.com | Web site: www.asd-lighting.com





LED UNDER CABINET BULLNOSE

INSTALLATION GUIDE

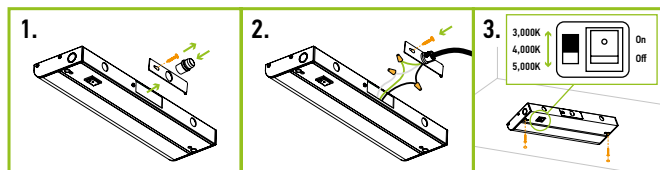
IMPORTANT SAFETY INFORMATION:

Please read all the instructions below before installation.

- ▶ Make sure that the supply voltage corresponds to the rated product voltage.
- ▶ The product must be installed by a qualified electrician in accordance with the National Electrical Code and corresponding local codes.
- ▶ If the product is damaged, do not use it.

HARDWIRE INSTALLATION:

1. Remove the knock-out. Dismount adapter plate by loosening screw. Insert the romex connector into the open hole.
2. Pass the wires through the romex connector and connect them: Black to Black, White to White, Green to Green. Secure them with wire nuts. Tuck all the wires in to the fixture and reattach the adapter plate by tightening the screw.
3. Attach the fixture to the surface using 2 screws and cover holes with screw caps. Choose needed color temperature.



⚠ WARNING

RISK OF PERSONAL INJURY – READ and follow all WARNINGS and installation instructions.

Keep or give to the owner for future reference.

Risk of cuts: Wear gloves to prevent cuts or abrasions when removing from carton, handling, installing, and maintaining this product.

Risk of electric shock: This product must be installed in accordance with the applicable installation code by a person familiar with the construction and operation of the product and the hazards involved.

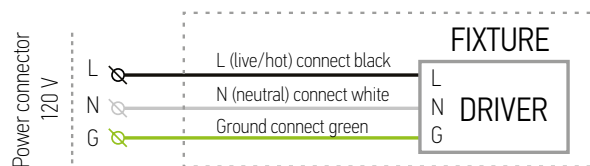
Risk of Fire: Minimum 194°F supply conductors. Consult a qualified electrician to ensure correct branch circuit conductor.

ASD® assumes no responsibility for claims arising out of improper or careless Installation or handling of this product.

For recessed installation: Access above ceiling required. Inherently protected.

Vapor barrier must be suitable for 194°F

ELECTRICAL SCHEMATIC DIAGRAM:



ORDERING INFORMATION

LED UNDER CABINET BULLNOSE:

| Model | Size | Watts | Lumens | Finish | UPS | | | |
|--------------------|-------------------|---------------------|-------------------|------------------------|-----------------|----------------------|---------------|--------------------|
| ASD-UCB-9D3CC-WH | 9 inch | 3 W | 187 lm | White | 810050734608 | | | |
| ASD-UCB-12D5CC-WH | 12 inch | 5 W | 302 lm | White | 810050734615 | | | |
| ASD-UCB-18D8CC-WH | 18 inch | 8 W | 655 lm | White | 810050734639 | | | |
| ASD-UCB-24D12CC-WH | 24 inch | 12 W | 769 lm | White | 810050734646 | | | |
| ASD-UCB-32D16CC-WH | 32 inch | 16 W | 985 lm | White | 810050734653 | | | |
| ASD-UCB-40D20CC-WH | 40 inch | 20 W | 1,454 lm | White | 810050734660 | | | |
| ASD-UCB-48D24CC-WH | 48 inch | 24 W | 1,630 lm | White | 810050734677 | | | |
| Model | Pcs in middle box | Middle box Size | Middle box Weight | GTIN 14 for Middle box | Pcs. per Carton | Carton Size | Carton Weight | GTIN 14 for Carton |
| ASD-UCB-9D3CC-WH | 4 | 10.4" x 3.3" x 8.5" | 3.9 lb | 10810050734605 | 20 | 18.5" x 11.2" x 9.4" | 19.4 lb | 20810050734602 |
| ASD-UCB-12D5CC-WH | 4 | 13.4" x 3.3" x 8.5" | 4.8 lb | 10810050734612 | 20 | 18.5" x 14.2" x 9.4" | 23.8 lb | 20810050734619 |
| ASD-UCB-18D8CC-WH | 4 | 19.5" x 3.3" x 8.5" | 5.6 lb | 10810050734636 | 20 | 20.3" x 18.5" x 9.4" | 28.2 lb | 20810050734633 |
| ASD-UCB-24D12CC-WH | 4 | 25.4" x 3.3" x 8.5" | 7.4 lb | 10810050734643 | 20 | 26.2" x 18.5" x 9.4" | 37 lb | 20810050734640 |
| ASD-UCB-32D16CC-WH | 4 | 33.5" x 3.3" x 8.5" | 8.3 lb | 10810050734650 | 12 | 34.3" x 11" x 9.4" | 24.9 lb | 20810050734657 |
| ASD-UCB-40D20CC-WH | 4 | 41.3" x 3.3" x 8.5" | 10.9 lb | 10810050734667 | 12 | 42.1" x 11" x 9.4" | 32.8 lb | 20810050734664 |
| ASD-UCB-48D24CC-WH | 4 | 49.4" x 3.3" x 8.5" | 11.8 lb | 10810050734674 | 12 | 50.2" x 11" x 9.4" | 35.4 lb | 20810050734671 |

For most up-to-date spec sheets please refer to asd-lighting.com