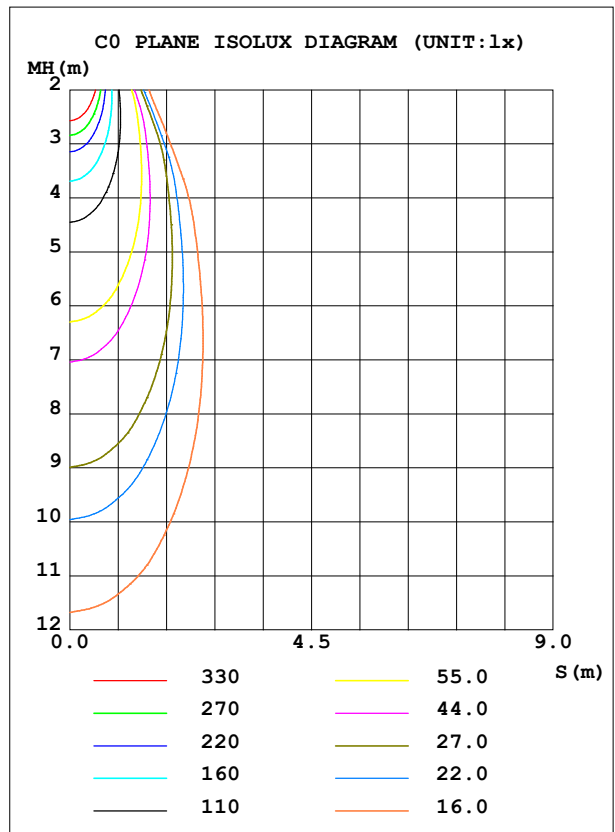
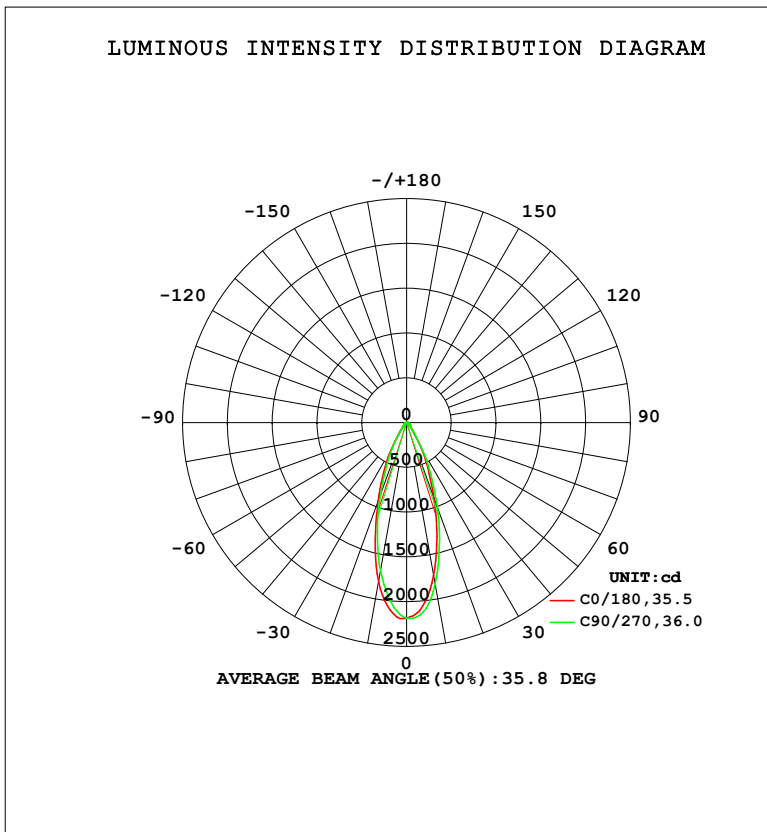


**LUMINAIRE PHOTOMETRIC TEST REPORT**

Test:U:119.84V I:0.1187A P:13.866W PF:0.9750 Freq:59.98Hz		
UTHDi:0.00% ITHDi:0.00% KDisp:0 Lamp Flux:1041.99x1 lm		
NAME: ASD-CD-PR-MV-2D15AC-WH	TYPE:	WEIGHT:
SPEC.: 5000K 90	DIM.:	SERIAL No.:
MFR.:ASD Lighting Corp	SUR.:	Shielding Angle:

DATA OF LAMP		PHOTOMETRIC DATA				Eff: 75.15 lm/W
MODEL		I <sub>max</sub> (cd)	2194	S/MH (C0/180)		0.59
NOMINAL POWER (W)	15	LOR (%)	100.0	S/MH (C90/270)		0.56
RATED VOLTAGE (V)	120	TOTAL FLUX (lm)	1042.0	η UP, DN (C0-180)		0.0, 51.7
NOMINAL FLUX (lm)	1041.99	CIE CLASS	DIRECT	η UP, DN (C180-360)		0.0, 48.3
LAMPS INSIDE	1	η up (%)	0.0	CIBSE SHR NOM		0.50
TEST VOLTAGE (V)	120	η down (%)	100.0	CIBSE SHR MAX		0.65



C Range: 0 - 360DEG  
 C Interval: 22.5DEG  
 Test Speed: HIGH  
 Temperature: 25.3 °C  
 Operators:  
 Test Date: 2022-10-14

γ Range: 0 - 90DEG  
 γ Interval: 1.0DEG  
 Test System: EVERFINE GO-SPEX500\_V1 SYSTEM V2.00.460  
 Humidity: 65.0%  
 Test Distance: 3.090m [K=1.0000]  
 Remarks:

**ZONAL FLUX DIAGRAM**

ZONAL FLUX DIAGRAM:

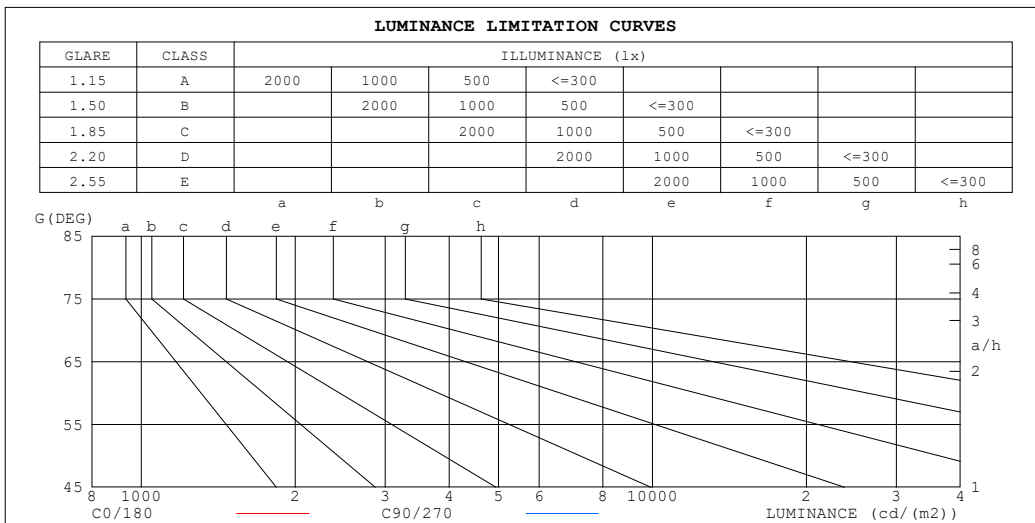
$\gamma$	C0	C45	C90	C135	C180	C225	C270	C315	$\gamma$	$\Phi$ zone	$\Phi$ total	%lum,lamp
10	1734	1837	1833	1814	1809	1684	1685	1705	0- 10	187.9	187.9	18,18
20	896.7	983.5	1006	937.6	931.3	875.2	854.9	892.8	10- 20	366.6	554.5	53.2,53.2
30	333.4	374.0	369.6	349.9	347.8	309.1	313.7	362.0	20- 30	273.2	827.7	79.4,79.4
40	84.97	90.94	85.79	80.16	80.88	79.82	79.61	87.54	30- 40	104.6	932.3	89.5,89.5
50	44.81	44.94	44.00	43.26	44.00	43.17	44.69	45.62	40- 50	45.06	977.4	93.8,93.8
60	26.99	26.76	25.60	25.10	25.75	25.59	26.80	27.52	50- 60	30.88	1008	96.8,96.8
70	15.01	15.22	14.68	14.47	14.69	14.24	14.92	15.36	60- 70	20.22	1028	98.7,98.7
80	5.906	6.209	5.941	5.811	5.955	5.586	5.886	6.106	70- 80	10.66	1039	99.7,99.7
90	0.0969	0.0637	0.0747	0.0692	0.0905	0.0547	0.0521	0.0513	80- 90	2.853	1042	100,100
100									90-100			
110									100-110			
120									110-120			
130									120-130			
140									130-140			
150									140-150			
160									150-160			
170									160-170			
180									170-180			
DEG	LUMINOUS INTENSITY:cd									UNIT:lm		

C Range: 0 - 360DEG  
 C Interval: 22.5DEG  
 Test Speed: HIGH  
 Temperature:25.3°C  
 Operators:  
 Test Date:2022-10-14

$\gamma$  Range: 0 - 90DEG  
 $\gamma$  Interval: 1.0DEG  
 Test System:EVERFINE GO-SPEX500\_V1 SYSTEM V2.00.460  
 Humidity:65.0%  
 Test Distance:3.090m [K=1.0000]  
 Remarks:

**LUMINANCE LIMITATION CURVES**

Test:U:119.84V I:0.1187A P:13.866W PF:0.9750 Freq:59.98Hz UTHDi:0.00% ITHDi:0.00% KDisp:0 Lamp Flux:1041.99x1 lm		
NAME: ASD-CD-PR-MV-2D15AC-WH	TYPE:	WEIGHT:
SPEC.: 5000K 90	DIM.:	SERIAL No.:
MFR.:ASD Lighting Corp	SUR.:	Shielding Angle:



LUMINANCE cd/(m2)		
G (DEG)	C0/180	C90/270
85	262	270
80	306	308
75	348	345
70	395	387
65	444	427
60	485	461
55	546	522
50	627	617
45	707	713

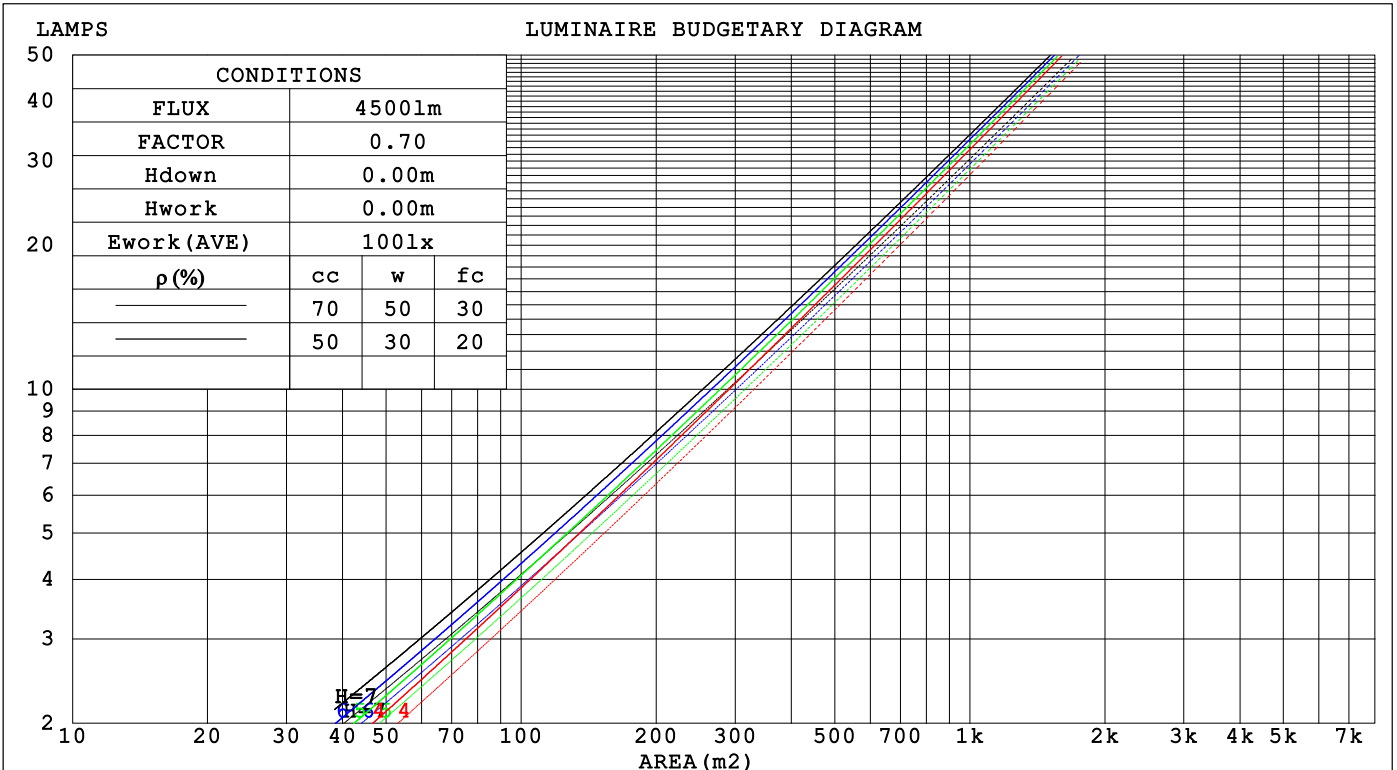
C Range: 0 - 360DEG  
 C Interval: 22.5DEG  
 Test Speed: HIGH  
 Temperature:25.3°C  
 Operators:  
 Test Date:2022-10-14

γ Range: 0 - 90DEG  
 γ Interval: 1.0DEG  
 Test System:EVERFINE GO-SPEX500\_V1 SYSTEM V2.00.460  
 Humidity:65.0%  
 Test Distance:3.090m [K=1.0000]  
 Remarks:

**CU AND LUMINAIRE BUDGETARY ESTIMATE DIAGRAM**

Test:U:119.84V I:0.1187A P:13.866W PF:0.9750 Freq:59.98Hz		
UTHDi:0.00% ITHDi:0.00% KDisp:0 Lamp Flux:1041.99x1 lm		
NAME: ASD-CD-PR-MV-2D15AC-WH	TYPE:	WEIGHT:
SPEC.: 5000K 90	DIM.:	SERIAL No.:
MFR.:ASD Lighting Corp	SUR.:	Shielding Angle:

pcc	80%			70%			50%			30%			10%			0
pw	50%	30%	10%	50%	30%	10%	50%	30%	10%	50%	30%	10%	50%	30%	10%	0
pfc	20%			20%			20%			20%			20%			0
RCR	RCR:Room Cavity Ratio						Coefficients of Utilization(CU)									
0.0	1.19	1.19	1.19	1.16	1.16	1.16	1.11	1.11	1.11	1.06	1.06	1.06	1.02	1.02	1.02	1.00
1.0	1.11	1.08	1.06	1.09	1.06	1.04	1.05	1.03	1.01	1.01	.99	.98	.97	.96	.95	.94
2.0	1.03	.99	.96	1.02	.98	.95	.98	.96	.93	.95	.93	.91	.93	.91	.89	.87
3.0	.97	.92	.88	.96	.91	.88	.93	.89	.86	.91	.87	.85	.88	.86	.84	.82
4.0	.91	.86	.82	.90	.85	.82	.88	.84	.81	.86	.83	.80	.84	.81	.79	.77
5.0	.86	.81	.77	.85	.80	.76	.84	.79	.76	.82	.78	.75	.80	.77	.74	.73
6.0	.82	.76	.72	.81	.76	.72	.80	.75	.71	.78	.74	.71	.77	.73	.71	.69
7.0	.78	.72	.68	.77	.72	.68	.76	.71	.68	.75	.71	.67	.74	.70	.67	.66
8.0	.74	.69	.65	.74	.68	.65	.72	.68	.64	.71	.67	.64	.71	.67	.64	.63
9.0	.71	.65	.62	.70	.65	.62	.69	.65	.61	.69	.64	.61	.68	.64	.61	.60
10.0	.68	.62	.59	.67	.62	.59	.67	.62	.59	.66	.62	.59	.65	.61	.58	.57



C Range: 0 - 360DEG  
 C Interval: 22.5DEG  
 Test Speed: HIGH  
 Temperature:25.3°C  
 Operators:  
 Test Date:2022-10-14

γ Range: 0 - 90DEG  
 γ Interval: 1.0DEG  
 Test System:EVERFINE GO-SPEX500\_V1 SYSTEM V2.00.460  
 Humidity:65.0%  
 Test Distance:3.090m [K=1.0000]  
 Remarks:

**WEC AND CCEC**

Test:U:119.84V I:0.1187A P:13.866W PF:0.9750 Freq:59.98Hz		
UTHDi:0.00% ITHDi:0.00% KDisp:0 Lamp Flux:1041.99x1 lm		
NAME: ASD-CD-PR-MV-2D15AC-WH	TYPE:	WEIGHT:
SPEC.: 5000K 90	DIM.:	SERIAL No.:
MFR.:ASD Lighting Corp	SUR.:	Shielding Angle:

$\rho_{CC}$	80%			70%			50%			30%			10%			0
$\rho_w$	50%	30%	10%	50%	30%	10%	50%	30%	10%	50%	30%	10%	50%	30%	10%	0
$\rho_{fc}$	20%			20%			20%			20%			20%			0
RCR	RCR:Room Cavity Ratio						Wall Exitance Coefficients(WEC)									
0.0																
1.0	.178	.101	.032	.171	.097	.031	.158	.091	.029	.147	.085	.027	.136	.079	.025	
2.0	.167	.092	.028	.162	.089	.027	.151	.084	.026	.141	.079	.025	.132	.075	.024	
3.0	.157	.084	.025	.153	.082	.025	.144	.078	.024	.135	.074	.023	.127	.071	.022	
4.0	.148	.077	.023	.144	.075	.022	.136	.072	.022	.129	.069	.021	.122	.066	.020	
5.0	.140	.071	.021	.136	.070	.020	.129	.067	.020	.123	.065	.019	.117	.063	.019	
6.0	.132	.066	.019	.129	.065	.019	.123	.063	.018	.118	.061	.018	.113	.059	.018	
7.0	.125	.062	.018	.123	.061	.017	.118	.059	.017	.113	.058	.017	.108	.056	.017	
8.0	.119	.058	.016	.117	.058	.016	.112	.056	.016	.108	.055	.016	.104	.053	.016	
9.0	.114	.055	.015	.112	.054	.015	.108	.053	.015	.104	.052	.015	.100	.051	.015	
10.0	.109	.052	.014	.107	.052	.014	.103	.051	.014	.100	.050	.014	.097	.049	.014	

$\rho_{CC}$	80%			70%			50%			30%			10%			0
$\rho_w$	50%	30%	10%	50%	30%	10%	50%	30%	10%	50%	30%	10%	50%	30%	10%	0
$\rho_{fc}$	20%			20%			20%			20%			20%			0
RCR	RCR:Room Cavity Ratio						Ceiling Cavity Exitance Coefficients(CCEC)									
0.0																
1.0	.190	.190	.190	.163	.163	.163	.111	.111	.111	.064	.064	.064	.020	.020	.020	
2.0	.156	.133	.113	.133	.114	.098	.091	.079	.068	.053	.046	.040	.017	.015	.013	
3.0	.143	.114	.090	.122	.098	.078	.084	.068	.055	.049	.040	.032	.016	.013	.011	
4.0	.132	.099	.073	.113	.085	.064	.078	.059	.045	.045	.035	.027	.014	.011	.009	
5.0	.123	.087	.061	.105	.075	.053	.073	.053	.037	.042	.031	.022	.014	.010	.007	
6.0	.115	.078	.051	.099	.067	.044	.068	.047	.031	.039	.028	.019	.013	.009	.006	
7.0	.108	.070	.043	.093	.060	.038	.064	.042	.027	.037	.025	.016	.012	.008	.005	
8.0	.102	.063	.037	.087	.055	.032	.061	.039	.023	.035	.023	.014	.011	.007	.005	
9.0	.096	.058	.032	.083	.050	.028	.057	.035	.020	.033	.021	.012	.011	.007	.004	
10.0	.091	.054	.028	.079	.047	.025	.055	.033	.018	.032	.019	.010	.010	.006	.003	

C Range: 0 - 360DEG  
 C Interval: 22.5DEG  
 Test Speed: HIGH  
 Temperature:25.3°C  
 Operators:  
 Test Date:2022-10-14

$\gamma$  Range: 0 - 90DEG  
 $\gamma$  Interval: 1.0DEG  
 Test System:EVERFINE GO-SPEX500\_V1 SYSTEM V2.00.460  
 Humidity:65.0%  
 Test Distance:3.090m [K=1.0000]  
 Remarks:

**UGR(Unified Glare Rating) Table**

Test:U:119.84V I:0.1187A P:13.866W PF:0.9750 Freq:59.98Hz		
UTHDi:0.00% ITHDi:0.00% KDisp:0 Lamp Flux:1041.99x1 lm		
NAME: ASD-CD-PR-MV-2D15AC-WH	TYPE:	WEIGHT:
SPEC.: 5000K 90	DIM.:	SERIAL No.:
MFR.:ASD Lighting Corp	SUR.:	Shielding Angle:

ceiling/cavity	0.7	0.7	0.5	0.5	0.3	0.7	0.7	0.5	0.5	0.3
walls	0.5	0.3	0.5	0.3	0.3	0.5	0.3	0.5	0.3	0.3
working plane	0.2	0.2	0.2	0.2	0.2	0.2	0.2	0.2	0.2	0.2

Room dimensions	Viewed crosswise					Viewed endwise				
x = 2H y = 2H	6.2	7.1	6.5	7.3	7.4	6.4	7.3	6.6	7.4	7.6
3H	7.0	7.8	7.3	8.0	8.2	7.1	7.9	7.3	8.1	8.3
4H	7.3	8.1	7.6	8.3	8.5	7.4	8.2	7.6	8.4	8.6
6H	7.5	8.3	7.8	8.5	8.7	7.6	8.3	7.9	8.6	8.8
8H	7.6	8.3	7.9	8.6	8.8	7.7	8.4	8.0	8.6	8.9
12H	7.6	8.3	7.9	8.6	8.8	7.7	8.4	8.0	8.6	8.9
4H 2H	6.5	7.3	6.8	7.5	7.7	6.6	7.4	6.9	7.6	7.9
3H	7.5	8.2	7.8	8.4	8.7	7.5	8.2	7.9	8.5	8.8
4H	7.9	8.5	8.2	8.8	9.1	7.9	8.6	8.3	8.9	9.2
6H	8.2	8.8	8.6	9.1	9.4	8.3	8.8	8.6	9.1	9.5
8H	8.3	8.8	8.7	9.2	9.5	8.4	8.9	8.8	9.2	9.6
12H	8.4	8.9	8.8	9.2	9.6	8.4	8.9	8.9	9.3	9.7
8H 4H	8.0	8.5	8.4	8.9	9.2	8.1	8.6	8.5	8.9	9.3
6H	8.4	8.9	8.9	9.3	9.7	8.5	8.9	8.9	9.3	9.7
8H	8.6	9.0	9.1	9.4	9.9	8.7	9.1	9.1	9.5	9.9
12H	8.7	9.1	9.2	9.5	10.0	8.8	9.1	9.3	9.6	10.0
12H 4H	8.0	8.5	8.4	8.8	9.2	8.1	8.5	8.5	8.9	9.3
6H	8.5	8.8	8.9	9.3	9.7	8.5	8.9	9.0	9.3	9.8
8H	8.7	9.0	9.1	9.4	9.9	8.7	9.0	9.2	9.5	10.0

Variations with the observer position at spacings(CIE Pub.117):		
S = 1.0H	+ 0.5 / - 0.6	+ 0.5 / - 0.7
1.5H	+ 0.8 / - 0.4	+ 1.0 / - 0.5
2.0H	+ 0.5 / - 0.5	+ 0.6 / - 0.6

CIE Pub.117, 1042 lm Total Lamp Luminous Flux Correct (8log(F/F0) = 0.1)  
 Area: 0.111111 m2

C Range: 0 - 360DEG	γ Range: 0 - 90DEG
C Interval: 22.5DEG	γ Interval: 1.0DEG
Test Speed: HIGH	Test System:EVERFINE GO-SPEX500_V1 SYSTEM V2.00.460
Temperature:25.3°C	Humidity:65.0%
Operators:	Test Distance:3.090m [K=1.0000]
Test Date:2022-10-14	Remarks:

**UTILIZATION FACTORS TABLE**

Test:U:119.84V I:0.1187A P:13.866W PF:0.9750 Freq:59.98Hz UTHDi:0.00% ITHDi:0.00% KDisp:0 Lamp Flux:1041.99x1 lm		
NAME: ASD-CD-PR-MV-2D15AC-WH	TYPE:	WEIGHT:
SPEC.: 5000K 90	DIM.:	SERIAL No.:
MFR.:ASD Lighting Corp	SUR.:	Shielding Angle:

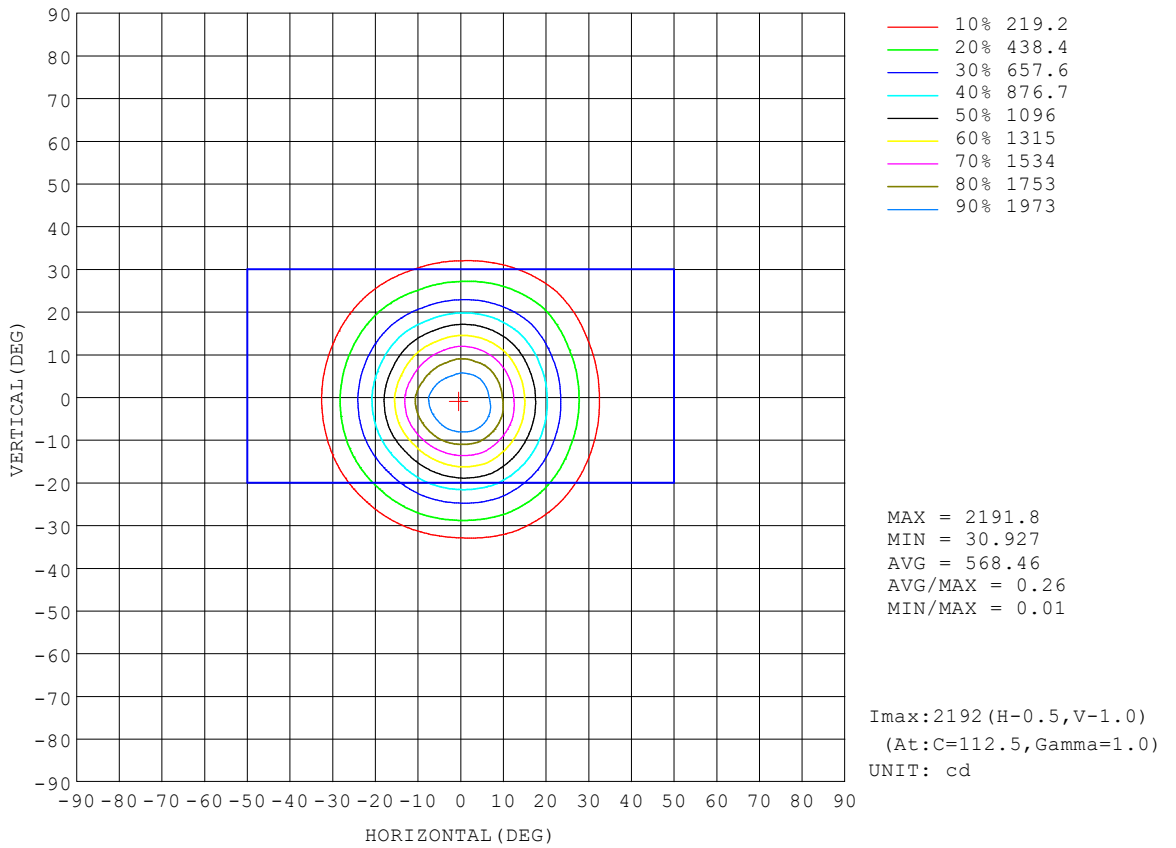
REFLECTANCE										
Ceiling	0.8	0.8	0.8	0.7	0.7	0.7	0.5	0.5	0.5	0
Walls	0.7	0.5	0.3	0.7	0.5	0.3	0.7	0.5	0.3	0
Working plane	0.2	0.2	0.2	0.2	0.2	0.2	0.2	0.2	0.2	0
ROOM INDEX	UTILIZATION FACTORS (PERCENT) $k(RI) \times RCR = 5$									
$k = 0.60$	85	78	74	85	78	74	84	78	74	70
0.80	93	86	82	92	86	82	91	85	82	78
1.00	97	91	87	96	91	87	95	91	86	82
1.25	101	96	92	100	95	92	98	94	91	86
1.50	104	99	96	103	98	95	101	97	94	89
2.00	107	103	99	106	102	99	103	100	97	92
2.50	109	105	102	108	104	101	104	101	99	93
3.00	111	107	104	109	106	103	106	103	101	94
4.00	113	110	108	111	108	106	107	105	104	96
5.00	115	112	110	112	110	108	108	107	105	98
ROOM INDEX	UF(total)									Direct
According to DIN EN 13032-2 2004			Suspended				SHRNOM = 1.25			

C Range: 0 - 360DEG  
 C Interval: 22.5DEG  
 Test Speed: HIGH  
 Temperature:25.3°C  
 Operators:  
 Test Date:2022-10-14

$\gamma$  Range: 0 - 90DEG  
 $\gamma$  Interval: 1.0DEG  
 Test System:EVERFINE GO-SPEX500\_V1 SYSTEM V2.00.460  
 Humidity:65.0%  
 Test Distance:3.090m [K=1.0000]  
 Remarks:

**ISOCANDELA DIAGRAM**

Test:U:119.84V I:0.1187A P:13.866W PF:0.9750 Freq:59.98Hz UTHDi:0.00% ITHDi:0.00% KDisp:0 Lamp Flux:1041.99x1 lm		
NAME: ASD-CD-PR-MV-2D15AC-WH	TYPE:	WEIGHT:
SPEC.: 5000K 90	DIM.:	SERIAL No.:
MFR.:ASD Lighting Corp	SUR.:	Shielding Angle:



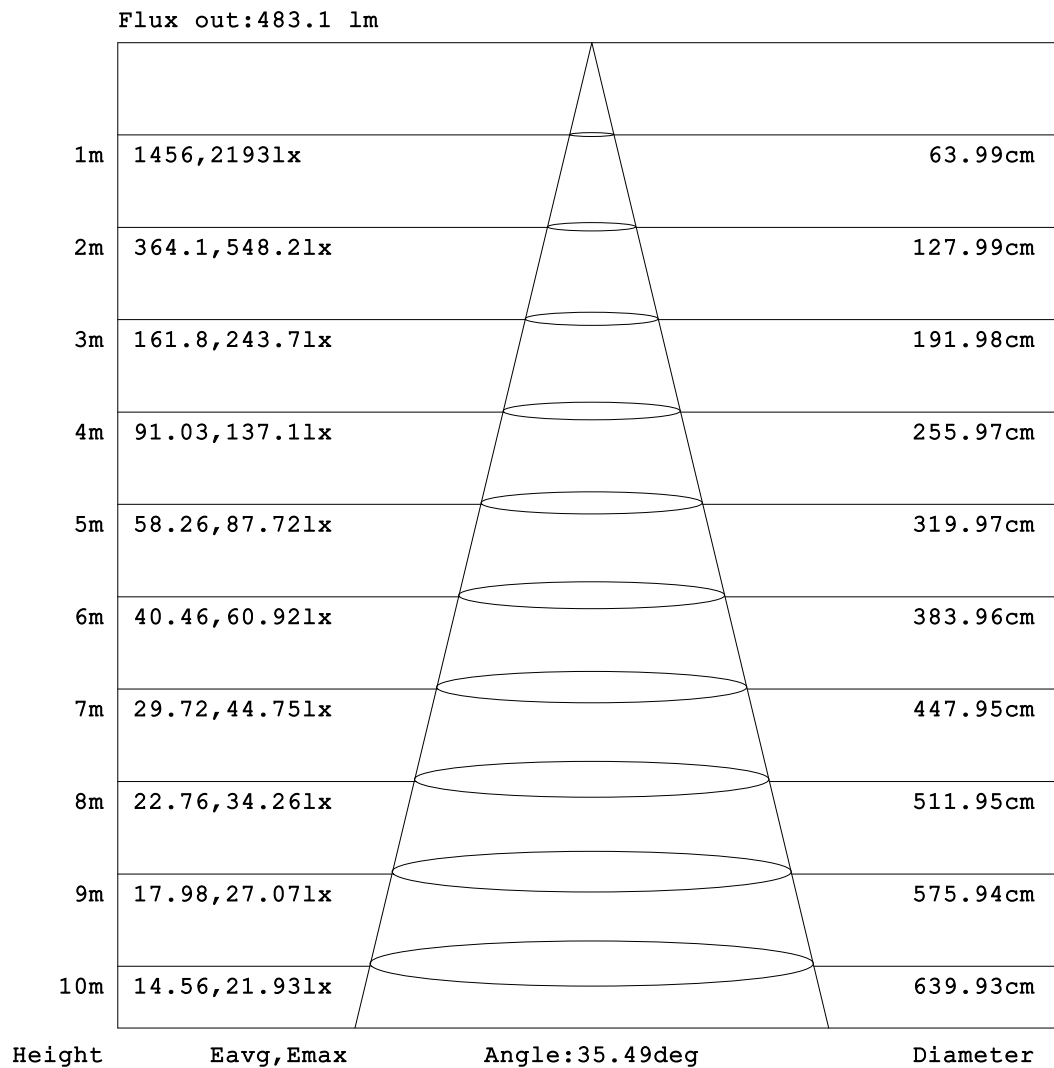
C Range: 0 - 360DEG  
 C Interval: 22.5DEG  
 Test Speed: HIGH  
 Temperature:25.3°C  
 Operators:  
 Test Date:2022-10-14

γ Range: 0 - 90DEG  
 γ Interval: 1.0DEG  
 Test System:EVERFINE GO-SPEX500\_V1 SYSTEM V2.00.460  
 Humidity:65.0%  
 Test Distance:3.090m [K=1.0000]  
 Remarks:



**AAI Figure**

Test:U:119.84V I:0.1187A P:13.866W PF:0.9750 Freq:59.98Hz UTHDi:0.00% ITHDi:0.00% KDisp:0 Lamp Flux:1041.99x1 lm		
NAME: ASD-CD-PR-MV-2D15AC-WH	TYPE:	WEIGHT:
SPEC.: 5000K 90	DIM.:	SERIAL No.:
MFR.:ASD Lighting Corp	SUR.:	Shielding Angle:



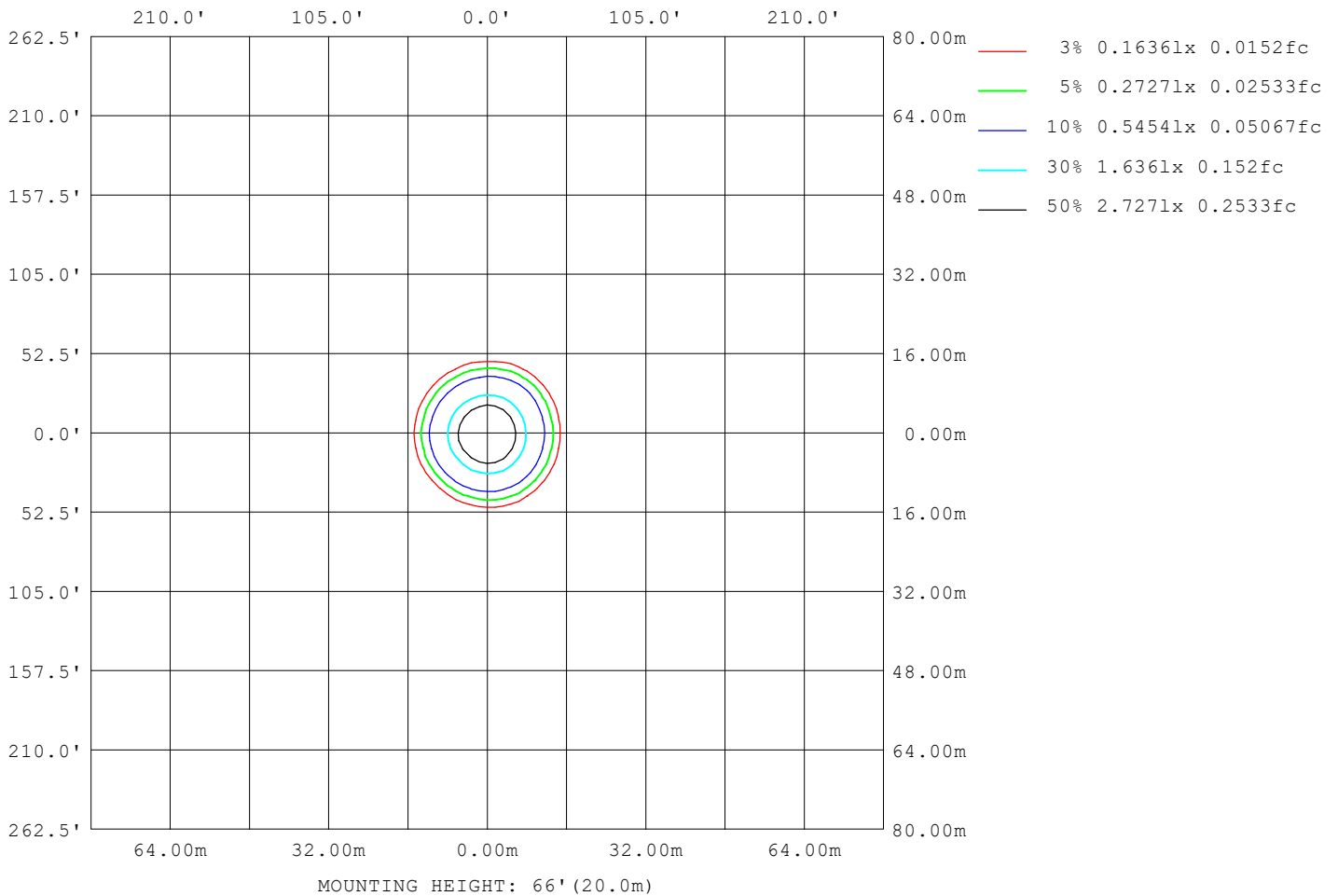
Note:The Curves indicate the illuminated area and the average illumination when the luminaire is at different distance.

C Range: 0 - 360DEG  
C Interval: 22.5DEG  
Test Speed: HIGH  
Temperature:25.3°C  
Operators:  
Test Date:2022-10-14

γ Range: 0 - 90DEG  
γ Interval: 1.0DEG  
Test System:EVERFINE GO-SPEX500\_V1 SYSTEM V2.00.460  
Humidity:65.0%  
Test Distance:3.090m [K=1.0000]  
Remarks:

**ISOLUX DIAGRAM**

Test:U:119.84V I:0.1187A P:13.866W PF:0.9750 Freq:59.98Hz UTHDi:0.00% ITHDi:0.00% KDisp:0 Lamp Flux:1041.99x1 lm		
NAME: ASD-CD-PR-MV-2D15AC-WH	TYPE:	WEIGHT:
SPEC.: 5000K 90	DIM.:	SERIAL No.:
MFR.:ASD Lighting Corp	SUR.:	Shielding Angle:



C Range: 0 - 360DEG  
 C Interval: 22.5DEG  
 Test Speed: HIGH  
 Temperature:25.3°C  
 Operators:  
 Test Date:2022-10-14

γ Range: 0 - 90DEG  
 γ Interval: 1.0DEG  
 Test System:EVERFINE GO-SPEX500\_V1 SYSTEM V2.00.460  
 Humidity:65.0%  
 Test Distance:3.090m [K=1.0000]  
 Remarks:

**LED Avg.L Report**

Test:U:119.84V I:0.1187A P:13.866W PF:0.9750 Freq:59.98Hz UTHDi:0.00% ITHDi:0.00% KDisp:0 Lamp Flux:1041.99x1 lm		
NAME: ASD-CD-PR-MV-2D15AC-WH	TYPE:	WEIGHT:
SPEC.: 5000K 90	DIM.:	SERIAL No.:
MFR.:ASD Lighting Corp	SUR.:	Shielding Angle:

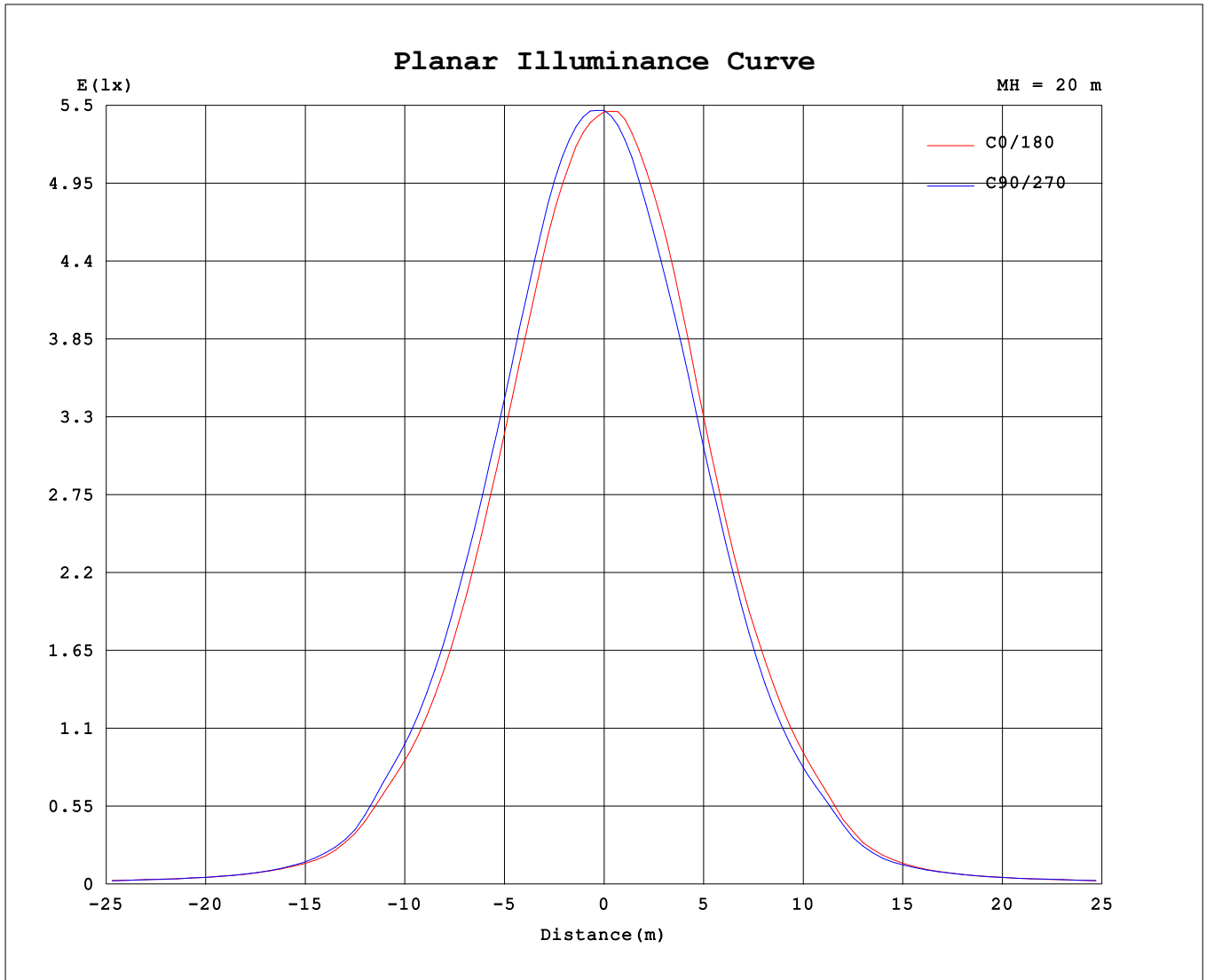
AvgL	cd/m2
L_0~180 (65) av	436
L_0~180 (75) av	347
L_0~180 (85) av	265
L_90~270 (65) av	433
L_90~270 (75) av	346
L_90~270 (85) av	263
L_45 (65) av	435
L_45 (75) av	347
L_45 (85) av	264

Standard: GB/T 29293-2012

C Range: 0 - 360DEG  
 C Interval: 22.5DEG  
 Test Speed: HIGH  
 Temperature:25.3℃  
 Operators:  
 Test Date:2022-10-14

γ Range: 0 - 90DEG  
 γ Interval: 1.0DEG  
 Test System:EVERFINE GO-SPEX500\_V1 SYSTEM V2.00.460  
 Humidity:65.0%  
 Test Distance:3.090m [K=1.0000]  
 Remarks:

**Planar Illuminance Curve**



C Range: 0 - 360DEG  
 C Interval: 22.5DEG  
 Test Speed: HIGH  
 Temperature: 25.3 °C  
 Operators:  
 Test Date: 2022-10-14

γ Range: 0 - 90DEG  
 γ Interval: 1.0DEG  
 Test System: EVERFINE GO-SPEX500\_V1 SYSTEM V2.00.460  
 Humidity: 65.0%  
 Test Distance: 3.090m [K=1.0000]  
 Remarks:

LUMINOUS DISTRIBUTION INTENSITY DATA

Test:U:119.84V I:0.1187A P:13.866W PF:0.9750 Freq:59.98Hz UTHDi:0.00% ITHDi:0.00% KDisp:0 Lamp Flux:1041.99x1 lm		
NAME: ASD-CD-PR-MV-2D15AC-WH	TYPE:	WEIGHT:
SPEC.: 5000K 90	DIM.:	SERIAL No.:
MFR.:ASD Lighting Corp	SUR.:	Shielding Angle:

Table--1

UNIT: cd

C (DEG) \ γ (DEG)	0	22.5	45	67.5	90	112.5	135	157.5	180	202.5	225	247.5	270	292.5	315	337.5			
0	2184	2184	2184	2184	2184	2184	2184	2184	2184	2184	2184	2184	2184	2184	2184	2184			
5	2057	2093	2122	2136	2125	2121	2103	2105	2101	2062	2023	1998	2010	2021	2038	2047			
10	1734	1800	1837	1858	1833	1830	1814	1815	1809	1723	1684	1665	1685	1684	1705	1719			
15	1313	1356	1400	1444	1420	1389	1364	1377	1358	1293	1274	1246	1269	1285	1297	1293			
20	897	932	983	1026	1006	977	938	947	931	891	875	839	855	880	893	880			
25	567	593	638	665	644	633	608	616	604	576	557	526	536	562	582	560			
30	333	346	374	390	370	365	350	355	348	322	309	296	314	340	362	337			
35	146	151	166	174	161	154	147	149	150	141	138	131	134	145	154	145			
40	85.0	87.0	90.9	92.1	85.8	83.4	80.2	80.8	80.9	79.7	79.8	77.8	79.6	83.9	87.5	84.1			
45	55.6	57.1	58.1	58.5	56.0	55.5	54.7	55.1	55.1	54.4	54.4	54.0	54.6	55.4	55.8	55.2			
50	44.8	44.8	44.9	44.9	44.0	43.6	43.3	43.7	44.0	43.3	43.2	43.4	44.7	45.3	45.6	45.1			
55	34.8	34.8	34.7	34.4	33.2	32.9	32.6	33.1	33.3	32.9	33.1	33.6	34.8	35.5	36.1	35.4			
60	27.0	27.0	26.8	26.4	25.6	25.3	25.1	25.5	25.7	25.5	25.6	25.9	26.8	27.3	27.5	27.2			
65	20.9	20.9	20.9	20.6	20.0	19.8	19.7	19.9	20.0	19.8	19.7	19.9	20.7	21.2	21.3	21.0			
70	15.0	15.1	15.2	15.1	14.7	14.5	14.5	14.6	14.7	14.4	14.2	14.4	14.9	15.3	15.4	15.1			
75	10.01	10.2	10.3	10.3	9.92	9.84	9.79	9.97	9.98	9.67	9.54	9.56	10.0	10.2	10.3	10.1			
80	5.91	6.09	6.21	6.22	5.94	5.87	5.81	5.95	5.96	5.71	5.59	5.57	5.89	6.03	6.11	5.93			
85	2.54	2.71	2.84	2.85	2.62	2.53	2.46	2.57	2.59	2.32	2.28	2.26	2.49	2.58	2.64	2.53			
90	0.10	0.07	0.06	0.07	0.07	0.07	0.07	0.08	0.09	0.11	0.05	0.06	0.05	0.05	0.05	0.07			

C Range: 0 - 360DEG  
 C Interval: 22.5DEG  
 Test Speed: HIGH  
 Temperature:25.3℃  
 Operators:  
 Test Date:2022-10-14

γ Range: 0 - 90DEG  
 γ Interval: 1.0DEG  
 Test System:EVERFINE GO-SPEX500\_V1 SYSTEM V2.00.460  
 Humidity:65.0%  
 Test Distance:3.090m [K=1.0000]  
 Remarks: