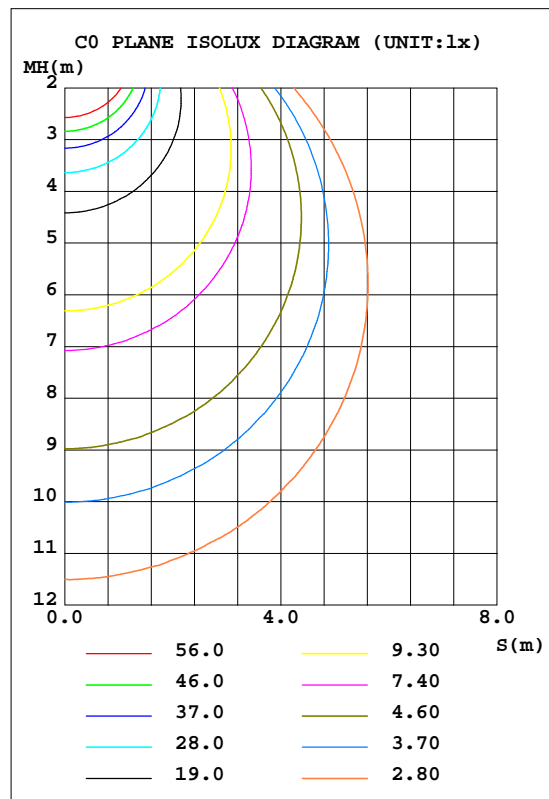
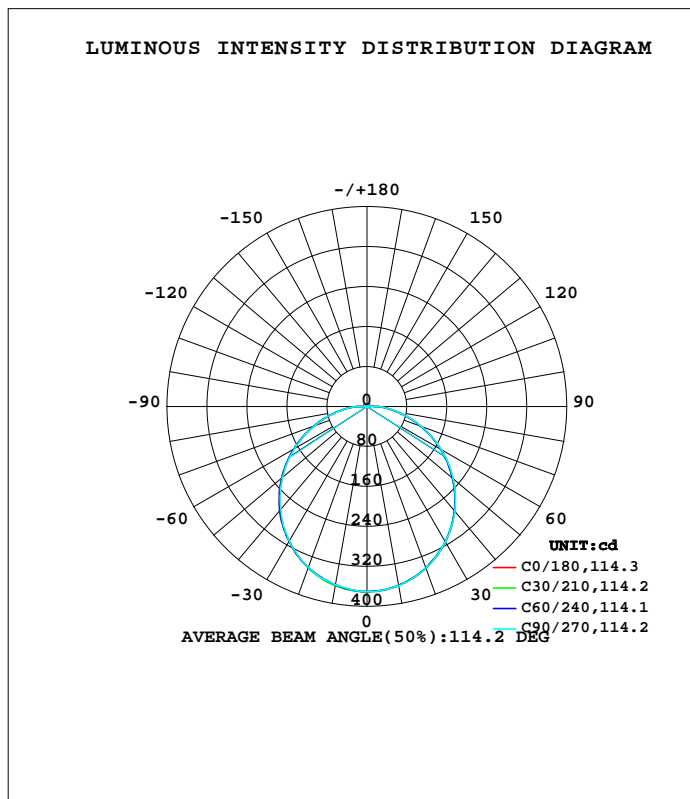


LUMINAIRE PHOTOMETRIC TEST REPORT

Test:U:120.03V I:0.1495A P:15.562W PF:0.8114 Freq:60.00Hz Lamp Flux:1135.96x1 lm		
NAME:	TYPE:	WEIGHT:
SPEC.:	DIM.:	SERIAL No.:
MFR.: ASD LIGHTING CORP	SUR.: ϕ 0.14	Shielding Angle:

DATA OF LAMP		PHOTOMETRIC DATA Eff: 73.00 lm/W			
MODEL	ASD-LDS-6N15AC-MawHcd(3500K)	370.8	S/MH(C0/180)	1.25	
NOMINAL POWER(W)	15	LOR(%)	100.0	S/MH(C90/270)	1.25
RATED VOLTAGE(V)	120	TOTAL FLUX(lm)	1136.0	h UP, DN(C0-180)	1.2,49.0
NOMINAL FLUX(lm)	1135.96	CIE CLASS	DIRECT	h UP, DN(C180-360)	1.2,48.6
LAMPS INSIDE	1	h up(%)	2.4	CIBSE SHR NOM	1.25
TEST VOLTAGE(V)	120.0	h down(%)	97.6	CIBSE SHR MAX	1.35



C Range: 0 - 360DEG
 C Interval: 30.0DEG
 Test Speed: HIGH
 Temperature:25.3DEG
 Operators:
 Test Date:2022-06-16

g Range: 0 - 180DEG
 g Interval: 1.0DEG
 Test System:EVERFINE GO-2000B_V1 SYSTEM V2.00.426
 Humidity:65.0%
 Test Distance:8.700m [K=0.9540]
 Remarks:

ZONAL FLUX DIAGRAM

ZONAL FLUX DIAGRAM:

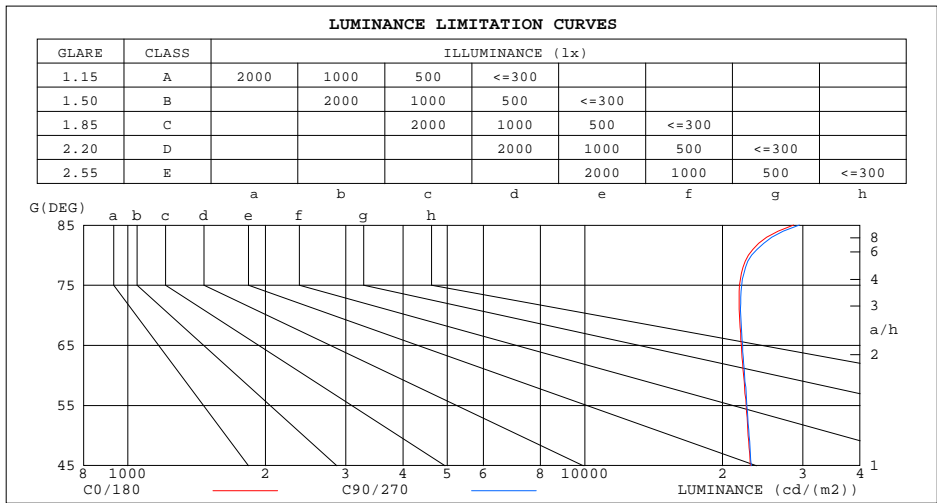
g	C0	C45	C90	C135	C180	C225	C270	C315	g	F zone	F total	%lum,lamp
10	363.5	363.8	364.1	363.1	363.7	363.0	362.0	363.0	0- 10	35.00	35.00	3.08,3.08
20	344.8	344.2	344.3	343.1	343.3	343.1	342.7	342.8	10- 20	100.2	135.2	11.9,11.9
30	313.0	313.2	313.1	311.5	311.7	311.3	310.7	311.7	20- 30	151.7	286.8	25.3,25.3
40	272.7	272.9	273.5	271.2	272.3	271.0	268.5	271.6	30- 40	183.3	470.2	41.4,41.4
50	223.8	224.3	225.1	222.7	223.5	222.0	220.8	223.1	40- 50	191.5	661.6	58.2,58.2
60	170.1	170.5	171.2	168.7	169.2	167.7	166.8	169.2	50- 60	175.8	837.4	73.7,73.7
70	114.0	114.3	114.8	112.3	112.3	111.5	110.9	113.1	60- 70	139.6	977.0	86,86
80	60.56	61.10	61.59	59.29	58.73	58.48	58.14	60.01	70- 80	90.44	1067	94,94
90	19.85	21.31	21.52	20.17	19.64	18.00	19.51	20.25	80- 90	41.80	1109	97.6,97.6
100	1.231	1.311	1.009	1.132	3.401	0.9741	0.4508	0.8175	90-100	8.884	1118	98.4,98.4
110	3.103	2.418	1.295	2.103	3.325	2.449	1.590	2.042	100-110	1.491	1120	98.6,98.6
120	5.758	4.737	2.940	4.552	6.587	4.543	3.054	4.096	110-120	3.450	1123	98.9,98.9
130	6.861	5.697	4.796	6.257	7.244	5.455	4.707	6.109	120-130	4.811	1128	99.3,99.3
140	5.835	4.321	4.615	4.801	5.872	3.711	4.317	4.876	130-140	4.184	1132	99.7,99.7
150	2.684	1.343	2.183	1.506	3.164	1.438	2.484	1.515	140-150	2.137	1134	99.8,99.8
160	1.429	2.924	2.284	2.879	1.999	2.251	2.104	2.830	150-160	0.8508	1135	99.9,99.9
170	2.869	1.561	1.455	1.741	3.087	2.051	1.793	1.728	160-170	0.7764	1136	100,100
180	1.560	1.573	1.537	1.569	1.570	1.582	1.547	1.569	170-180	0.1553	1136	100,100
DEG	LUMINOUS INTENSITY:cd									UNIT:lm		

C Range: 0 - 360DEG
 C Interval: 30.0DEG
 Test Speed: HIGH
 Temperature:25.3DEG
 Operators:
 Test Date:2022-06-16

g Range: 0 - 180DEG
 g Interval: 1.0DEG
 Test System:EVERFINE GO-2000B_V1 SYSTEM V2.00.426
 Humidity:65.0%
 Test Distance:8.700m [K=0.9540]
 Remarks:

LUMINANCE LIMITATION CURVES

Test:U:120.03V I:0.1495A P:15.562W PF:0.8114 Freq:60.00Hz Lamp Flux:1135.96x1 lm		
NAME:	TYPE:	WEIGHT:
SPEC.:	DIM.:	SERIAL No.:
MFR.: ASD LIGHTING CORP	SUR.: $\phi 0.14$	Shielding Angle:



LUMINANCE cd/(m2)		
G(DEG)	C0/180	C90/270
85	28608	29456
80	22804	23179
75	21811	22035
70	21795	21928
65	22012	22136
60	22250	22380
55	22551	22637
50	22768	22881
45	23031	23129

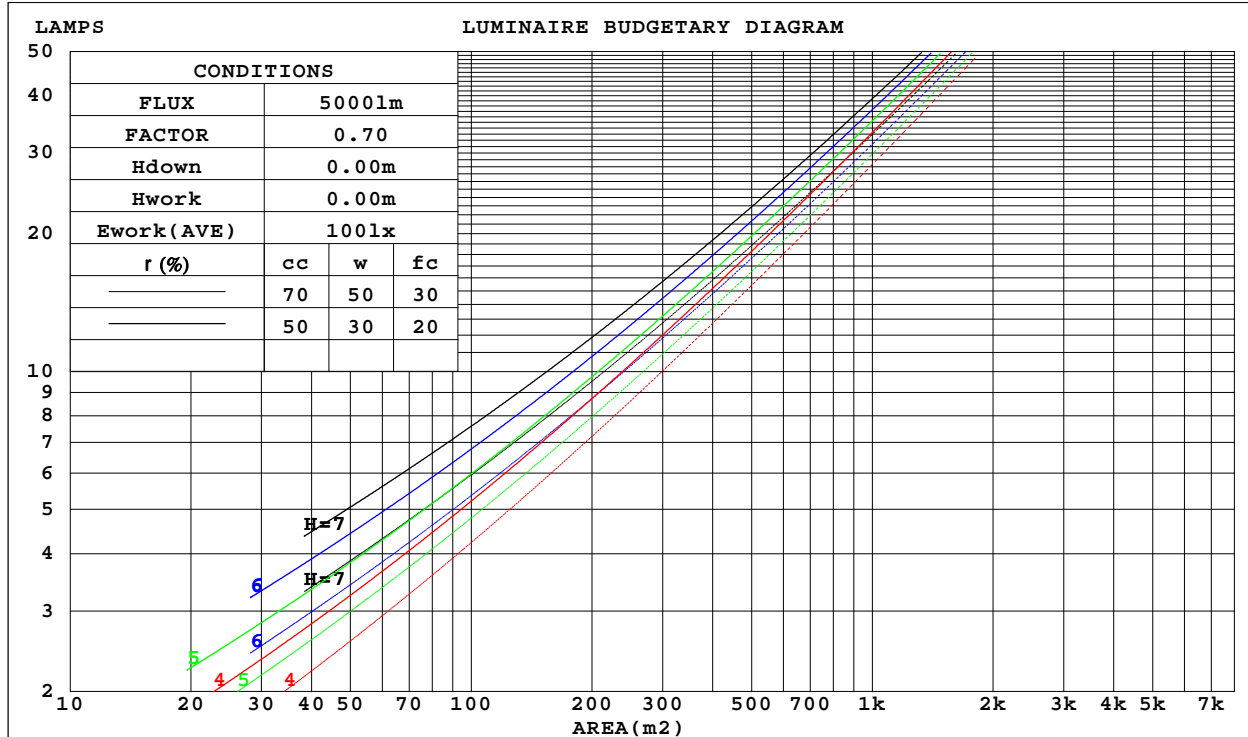
C Range: 0 - 360DEG
 C Interval: 30.0DEG
 Test Speed: HIGH
 Temperature: 25.3DEG
 Operators:
 Test Date: 2022-06-16

g Range: 0 - 180DEG
 g Interval: 1.0DEG
 Test System: EVERFINE GO-2000B_V1 SYSTEM V2.00.426
 Humidity: 65.0%
 Test Distance: 8.700m [K=0.9540]
 Remarks:

CU AND LUMINAIRE BUDGETARY ESTIMATE DIAGRAM

Test:U:120.03V I:0.1495A P:15.562W PF:0.8114 Freq:60.00Hz Lamp Flux:1135.96x1 lm		
NAME:	TYPE:	WEIGHT:
SPEC.:	DIM.:	SERIAL No.:
MFR.: ASD LIGHTING CORP	SUR.: $\phi 0.14$	Shielding Angle:

r cc	80%			70%			50%			30%			10%			0
r w	50%	30%	10%	50%	30%	10%	50%	30%	10%	50%	30%	10%	50%	30%	10%	0
r fc	20%			20%			20%			20%			20%			0
RCR	RCR:Room Cavity Ratio						Coefficients of Utilization(CU)									
0.0	1.18	1.18	1.18	1.15	1.15	1.15	1.10	1.10	1.10	1.05	1.05	1.05	.00	.00	.00	.98
1.0	1.02	.97	.93	.00	.95	.91	.95	.91	.88	.90	.88	.85	.86	.84	.82	.80
2.0	.88	.81	.75	.86	.80	.74	.82	.77	.72	.79	.74	.70	.75	.71	.68	.66
3.0	.77	.69	.62	.76	.68	.61	.72	.65	.60	.69	.63	.59	.66	.61	.57	.55
4.0	.68	.59	.52	.67	.58	.52	.64	.57	.51	.61	.55	.50	.59	.53	.49	.47
5.0	.61	.52	.45	.60	.51	.45	.57	.50	.44	.55	.48	.43	.53	.47	.42	.40
6.0	.55	.46	.39	.54	.45	.39	.52	.44	.38	.50	.43	.38	.48	.42	.37	.35
7.0	.50	.41	.34	.49	.40	.34	.47	.39	.34	.45	.38	.33	.44	.38	.33	.31
8.0	.45	.37	.31	.44	.36	.31	.43	.35	.30	.41	.35	.30	.40	.34	.30	.28
9.0	.42	.33	.28	.41	.33	.27	.39	.32	.27	.38	.32	.27	.37	.31	.27	.25
10.0	.38	.30	.25	.38	.30	.25	.37	.29	.25	.35	.29	.24	.34	.28	.24	.22



C Range: 0 - 360DEG
 C Interval: 30.0DEG
 Test Speed: HIGH
 Temperature:25.3DEG
 Operators:
 Test Date:2022-06-16

g Range: 0 - 180DEG
 g Interval: 1.0DEG
 Test System:EVERFINE GO-2000B_V1 SYSTEM V2.00.426
 Humidity:65.0%
 Test Distance:8.700m [K=0.9540]
 Remarks:

WEC AND CCEC

Test:U:120.03V I:0.1495A P:15.562W PF:0.8114 Freq:60.00Hz Lamp Flux:1135.96x1 lm		
NAME:	TYPE:	WEIGHT:
SPEC.:	DIM.:	SERIAL No.:
MFR.: ASD LIGHTING CORP	SUR.: φ0.14	Shielding Angle:

r cc	80%			70%			50%			30%			10%			0
r w	50%	30%	10%	50%	30%	10%	50%	30%	10%	50%	30%	10%	50%	30%	10%	0
r fc	20%			20%			20%			20%			20%			0
RCR	RCR:Room Cavity Ratio						Wall Exitance Coefficients(WEC)									
0.0																
1.0	.334	.190	.060	.326	.186	.059	.312	.179	.057	.298	.172	.055	.286	.165	.053	
2.0	.306	.168	.051	.299	.165	.051	.286	.159	.049	.274	.153	.048	.262	.148	.047	
3.0	.279	.149	.044	.273	.146	.044	.261	.142	.043	.251	.137	.042	.241	.133	.041	
4.0	.256	.133	.039	.250	.131	.039	.240	.127	.038	.230	.124	.037	.221	.120	.037	
5.0	.235	.120	.035	.230	.118	.034	.221	.115	.034	.212	.112	.033	.204	.109	.033	
6.0	.217	.109	.031	.213	.107	.031	.204	.105	.030	.197	.102	.030	.190	.100	.030	
7.0	.201	.100	.028	.198	.098	.028	.190	.096	.028	.183	.094	.027	.177	.092	.027	
8.0	.188	.092	.026	.184	.091	.026	.178	.089	.025	.171	.087	.025	.165	.085	.025	
9.0	.176	.085	.024	.172	.084	.024	.166	.082	.023	.161	.081	.023	.155	.079	.023	
10.0	.165	.079	.022	.162	.078	.022	.157	.077	.022	.151	.075	.021	.147	.074	.021	

r cc	80%			70%			50%			30%			10%			0
r w	50%	30%	10%	50%	30%	10%	50%	30%	10%	50%	30%	10%	50%	30%	10%	0
r fc	20%			20%			20%			20%			20%			0
RCR	RCR:Room Cavity Ratio						Ceiling Cavity Exitance Coefficients(CCEC)									
0.0	.208	.208	.208	.178	.178	.178	.122	.122	.122	.070	.070	.070	.022	.022	.022	
1.0	.200	.174	.151	.171	.149	.130	.117	.103	.090	.067	.059	.052	.022	.019	.017	
2.0	.192	.150	.115	.165	.129	.099	.113	.089	.069	.065	.052	.040	.021	.017	.013	
3.0	.185	.133	.091	.158	.114	.079	.109	.080	.056	.063	.046	.033	.020	.015	.011	
4.0	.177	.120	.076	.152	.103	.066	.104	.072	.046	.060	.042	.027	.019	.014	.009	
5.0	.169	.109	.065	.145	.094	.056	.100	.066	.040	.058	.039	.024	.019	.013	.008	
6.0	.162	.101	.057	.139	.087	.050	.096	.061	.035	.056	.036	.021	.018	.012	.007	
7.0	.155	.094	.051	.133	.082	.045	.092	.057	.032	.054	.034	.019	.017	.011	.006	
8.0	.148	.088	.047	.128	.077	.041	.088	.054	.029	.051	.032	.017	.017	.010	.006	
9.0	.142	.083	.044	.122	.072	.038	.085	.051	.027	.049	.030	.016	.016	.010	.005	
10.0	.136	.079	.041	.118	.069	.036	.082	.048	.025	.048	.029	.015	.015	.009	.005	

C Range: 0 - 360DEG
 C Interval: 30.0DEG
 Test Speed: HIGH
 Temperature:25.3DEG
 Operators:
 Test Date:2022-06-16

g Range: 0 - 180DEG
 g Interval: 1.0DEG
 Test System:EVERFINE GO-2000B_V1 SYSTEM V2.00.426
 Humidity:65.0%
 Test Distance:8.700m [K=0.9540]
 Remarks:

UGR(Unified Glare Rating) Table

Test:U:120.03V I:0.1495A P:15.562W PF:0.8114 Freq:60.00Hz Lamp Flux:1135.96x1 lm										
NAME:					TYPE:			WEIGHT:		
SPEC.:					DIM.:			SERIAL No.:		
MFR.: ASD LIGHTING CORP					SUR.: φ0.14			Shielding Angle:		
ceiling/cavity	0.7	0.7	0.5	0.5	0.3	0.7	0.7	0.5	0.5	0.3
walls	0.5	0.3	0.5	0.3	0.3	0.5	0.3	0.5	0.3	0.3
working plane	0.2	0.2	0.2	0.2	0.2	0.2	0.2	0.2	0.2	0.2
Room dimensions	Viewed crosswise					Viewed endwise				
x = 2H y = 2H	22.8	24.4	23.2	24.8	25.2	22.8	24.4	23.2	24.7	25.1
3H	24.8	26.3	25.2	26.7	27.1	24.8	26.3	25.2	26.6	27.0
4H	25.7	27.0	26.1	27.4	27.9	25.6	27.0	26.1	27.4	27.8
6H	26.4	27.7	26.8	28.1	28.5	26.4	27.7	26.8	28.1	28.5
8H	26.7	27.9	27.2	28.4	28.8	26.7	27.9	27.2	28.4	28.8
12H	27.0	28.2	27.5	28.6	29.1	27.0	28.2	27.5	28.6	29.1
4H 2H	23.5	24.9	23.9	25.3	25.7	23.4	24.8	23.9	25.2	25.6
3H	25.7	26.9	26.2	27.4	27.8	25.7	26.9	26.1	27.3	27.8
4H	26.7	27.8	27.2	28.3	28.7	26.7	27.7	27.1	28.2	28.7
6H	27.6	28.6	28.1	29.0	29.6	27.6	28.5	28.1	29.0	29.5
8H	28.0	28.9	28.5	29.4	29.9	28.0	28.9	28.5	29.4	29.9
12H	28.4	29.2	28.9	29.7	30.3	28.4	29.2	28.9	29.7	30.2
8H 4H	27.1	28.0	27.6	28.5	29.0	27.1	27.9	27.6	28.4	29.0
6H	28.2	29.0	28.7	29.5	30.0	28.1	28.9	28.7	29.4	29.9
8H	28.7	29.4	29.3	29.9	30.5	28.7	29.4	29.2	29.9	30.4
12H	29.3	29.9	29.8	30.4	31.0	29.2	29.8	29.8	30.4	31.0
12H 4H	27.2	28.0	27.7	28.5	29.0	27.1	27.9	27.6	28.4	29.0
6H	28.3	29.0	28.9	29.5	30.1	28.3	28.9	28.8	29.4	30.0
8H	28.9	29.5	29.5	30.1	30.7	28.9	29.5	29.4	30.0	30.6
CIE190: 2010										

CIE190: 2010
 Area: 0.0153 m2

C Range: 0 - 360DEG
 C Interval: 30.0DEG
 Test Speed: HIGH
 Temperature:25.3DEG
 Operators:
 Test Date:2022-06-16

g Range: 0 - 180DEG
 g Interval: 1.0DEG
 Test System:EVERFINE GO-2000B_V1 SYSTEM V2.00.426
 Humidity:65.0%
 Test Distance:8.700m [K=0.9540]
 Remarks:

UTILIZATION FACTORS TABLE

Test:U:120.03V I:0.1495A P:15.562W PF:0.8114 Freq:60.00Hz Lamp Flux:1135.96x1 lm		
NAME:	TYPE:	WEIGHT:
SPEC.:	DIM.:	SERIAL No.:
MFR.: ASD LIGHTING CORP	SUR.: $\phi 0.14$	Shielding Angle:

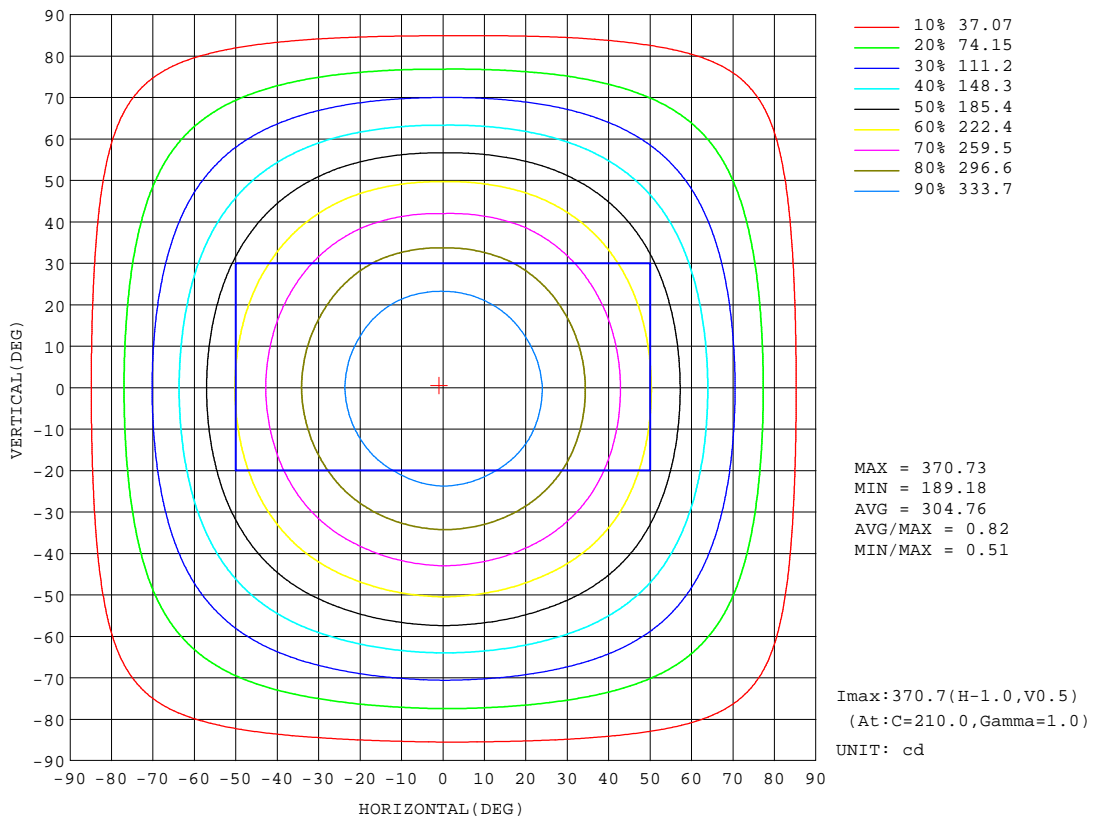
REFLECTANCE										
Ceiling	0.8	0.8	0.8	0.7	0.7	0.7	0.5	0.5	0.5	0
Walls	0.7	0.5	0.3	0.7	0.5	0.3	0.7	0.5	0.3	0
Working plane	0.2	0.2	0.2	0.2	0.2	0.2	0.2	0.2	0.2	0
ROOM INDEX	UTILIZATION FACTORS (PERCENT) $k(RI) \times RCR = 5$									
k = 0.60	56	44	37	55	44	37	54	43	36	30
0.80	66	54	46	64	53	46	62	52	45	38
1.00	74	62	55	72	62	54	70	63	54	46
1.25	81	70	62	79	69	62	76	67	61	53
1.50	86	75	68	84	74	67	81	72	66	58
2.00	93	84	77	91	82	76	87	80	74	66
2.50	97	88	82	95	87	81	90	84	79	70
3.00	100	93	87	98	91	86	93	88	83	74
4.00	104	98	93	102	96	92	97	92	89	79
5.00	107	102	97	104	99	95	99	95	92	82
ROOM INDEX	UF(total)									Direct
According to DIN EN 13032-2 2004			Suspended				SHRNOM = 1.25			

C Range: 0 - 360DEG
C Interval: 30.0DEG
Test Speed: HIGH
Temperature: 25.3DEG
Operators:
Test Date: 2022-06-16

g Range: 0 - 180DEG
g Interval: 1.0DEG
Test System: EVERFINE GO-2000B_V1 SYSTEM V2.00.426
Humidity: 65.0%
Test Distance: 8.700m [K=0.9540]
Remarks:

ISOCANDELA DIAGRAM

Test:U:120.03V I:0.1495A P:15.562W PF:0.8114 Freq:60.00Hz Lamp Flux:1135.96x1 lm		
NAME:	TYPE:	WEIGHT:
SPEC.:	DIM.:	SERIAL No.:
MFR.: ASD LIGHTING CORP	SUR.: $\phi 0.14$	Shielding Angle:



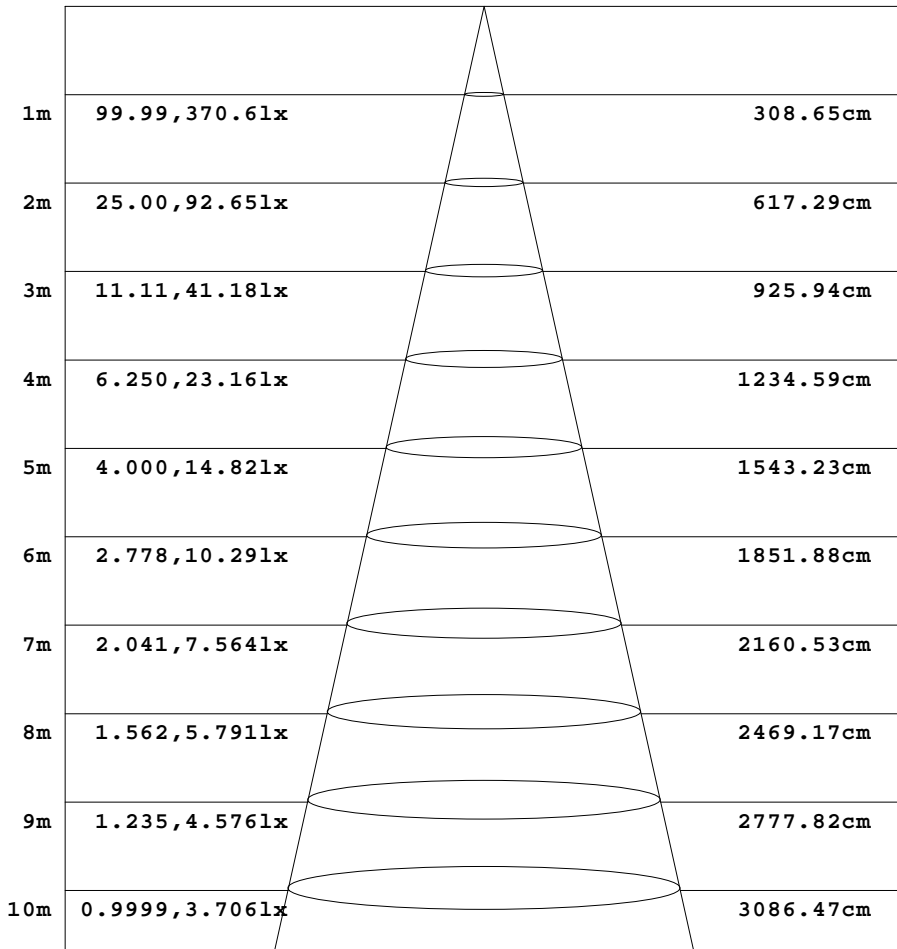
C Range: 0 - 360DEG
 C Interval: 30.0DEG
 Test Speed: HIGH
 Temperature:25.3DEG
 Operators:
 Test Date:2022-06-16

g Range: 0 - 180DEG
 g Interval: 1.0DEG
 Test System:EVERFINE GO-2000B_V1 SYSTEM V2.00.426
 Humidity:65.0%
 Test Distance:8.700m [K=0.9540]
 Remarks:

AAI Figure

Test:U:120.03V I:0.1495A P:15.562W PF:0.8114 Freq:60.00Hz Lamp Flux:1135.96x1 lm		
NAME:	TYPE:	WEIGHT:
SPEC.:	DIM.:	SERIAL No.:
MFR.: ASD LIGHTING CORP	SUR.: ϕ 0.14	Shielding Angle:

Flux out:804.5 lm



Height Eavg, Emax Angle:114.11deg Diameter

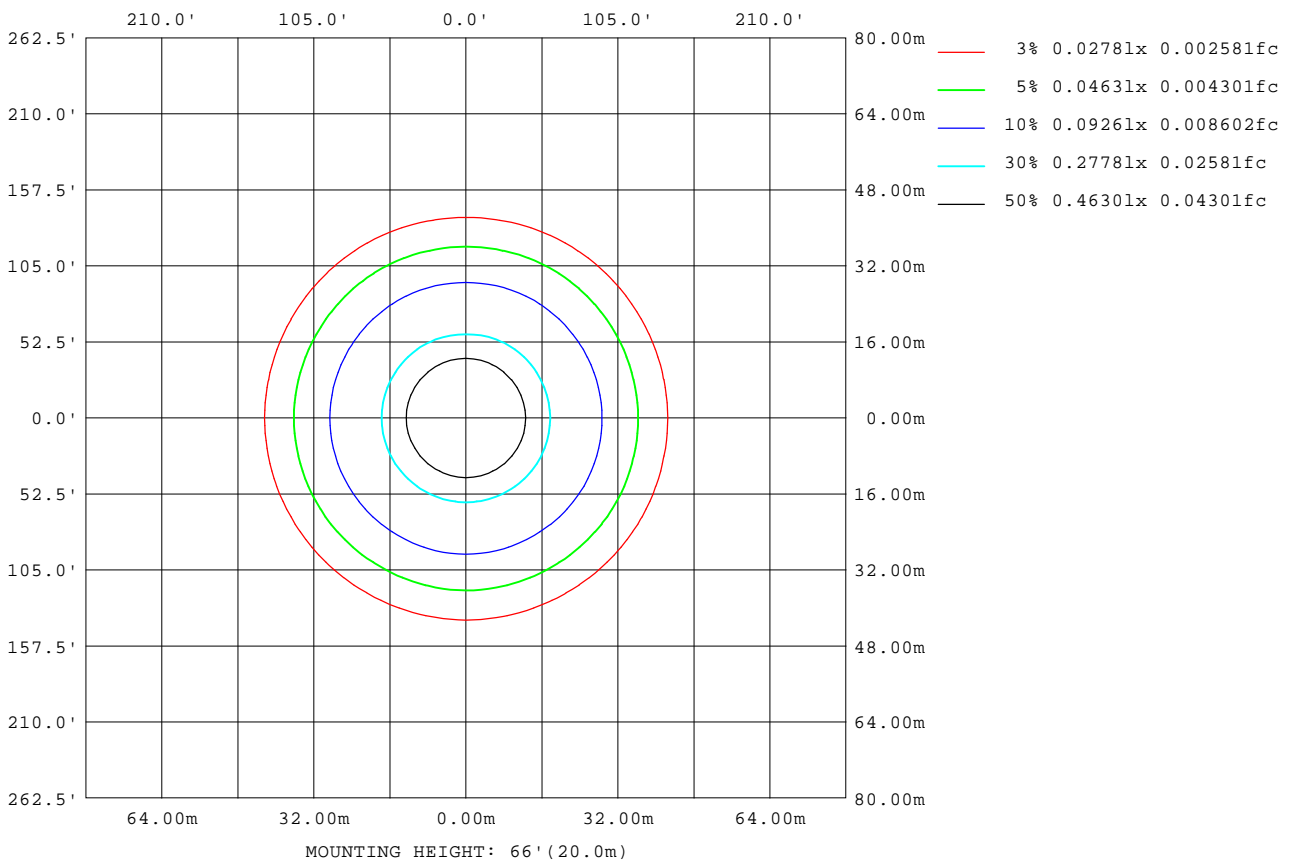
Note:The Curves indicate the illuminated area and the average illumination when the luminaire is at different distance.

C Range: 0 - 360DEG
 C Interval: 30.0DEG
 Test Speed: HIGH
 Temperature:25.3DEG
 Operators:
 Test Date:2022-06-16

g Range: 0 - 180DEG
 g Interval: 1.0DEG
 Test System:EVERFINE GO-2000B_V1 SYSTEM V2.00.426
 Humidity:65.0%
 Test Distance:8.700m [K=0.9540]
 Remarks:

ISOLUX DIAGRAM

Test:U:120.03V I:0.1495A P:15.562W PF:0.8114 Freq:60.00Hz Lamp Flux:1135.96x1 lm		
NAME:	TYPE:	WEIGHT:
SPEC.:	DIM.:	SERIAL No.:
MFR.: ASD LIGHTING CORP	SUR.: $\phi 0.14$	Shielding Angle:



C Range: 0 - 360DEG
 C Interval: 30.0DEG
 Test Speed: HIGH
 Temperature: 25.3DEG
 Operators:
 Test Date: 2022-06-16

g Range: 0 - 180DEG
 g Interval: 1.0DEG
 Test System: EVERFINE GO-2000B_V1 SYSTEM V2.00.426
 Humidity: 65.0%
 Test Distance: 8.700m [K=0.9540]
 Remarks:

LED Avg.L Report

Test:U:120.03V I:0.1495A P:15.562W PF:0.8114 Freq:60.00Hz Lamp Flux:1135.96x1 lm		
NAME:	TYPE:	WEIGHT:
SPEC.:	DIM.:	SERIAL No.:
MFR.: ASD LIGHTING CORP	SUR.: $\phi 0.14$	Shielding Angle:

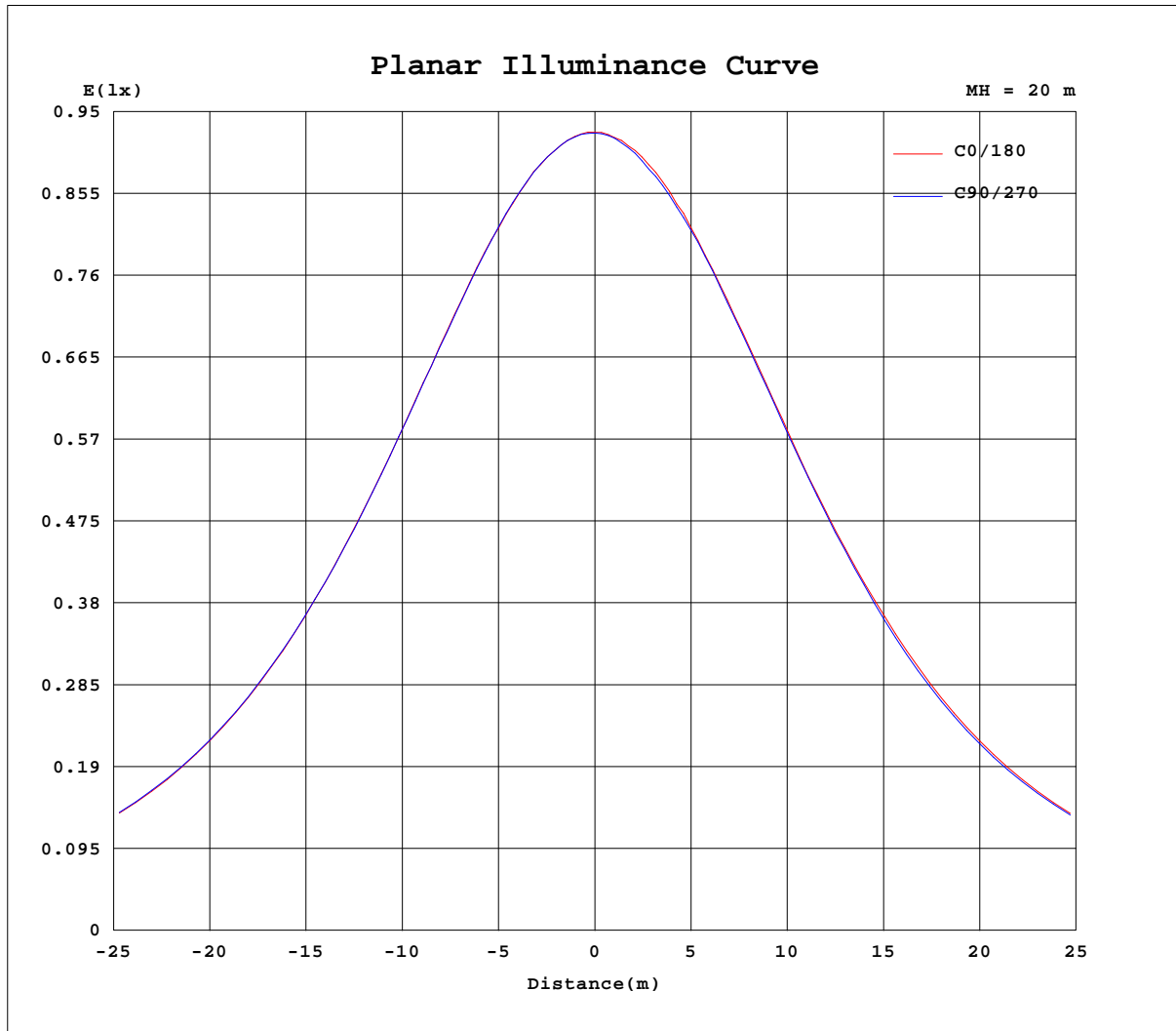
AvgL	cd/m2
L_0~180(65)av	21884
L_0~180(75)av	21586
L_0~180(85)av	28008
L_90~270(65)av	21823
L_90~270(75)av	21567
L_90~270(85)av	28402
L_45(65)av	21824
L_45(75)av	21556
L_45(85)av	28259

Standard: GB/T 29293-2012

C Range: 0 - 360DEG
C Interval: 30.0DEG
Test Speed: HIGH
Temperature:25.3DEG
Operators:
Test Date:2022-06-16

g Range: 0 - 180DEG
g Interval: 1.0DEG
Test System:EVERFINE GO-2000B_V1 SYSTEM V2.00.426
Humidity:65.0%
Test Distance:8.700m [K=0.9540]
Remarks:

Planar Illuminance Curve



C Range: 0 - 360DEG
 C Interval: 30.0DEG
 Test Speed: HIGH
 Temperature: 25.3DEG
 Operators:
 Test Date: 2022-06-16

g Range: 0 - 180DEG
 g Interval: 1.0DEG
 Test System: EVERFINE GO-2000B_V1 SYSTEM V2.00.426
 Humidity: 65.0%
 Test Distance: 8.700m [K=0.9540]
 Remarks:

LUMINOUS DISTRIBUTION INTENSITY DATA

Test:U:120.03V I:0.1495A P:15.562W PF:0.8114 Freq:60.00Hz Lamp Flux:1135.96x1 lm		
NAME:	TYPE:	WEIGHT:
SPEC.:	DIM.:	SERIAL No.:
MFR.: ASD LIGHTING CORP	SUR.: φ0.14	Shielding Angle:

Table--1

UNIT: cd

C(DEG) g (DEG)	0	30	60	90	120	150	180	210	240	270	300	330						
0	370	370	370	370	370	370	370	370	370	370	370	370						
5	369	369	369	369	368	368	368	369	368	368	368	368						
10	363	364	364	364	363	363	364	364	362	362	363	363						
15	356	356	355	356	354	355	355	356	354	355	354	355						
20	345	345	344	344	343	343	343	344	343	343	342	343						
25	330	331	329	330	328	329	329	329	329	328	328	329						
30	313	314	312	313	311	312	312	311	312	311	311	312						
35	294	295	294	294	292	292	293	292	293	292	293	292						
40	273	274	272	274	271	271	272	271	271	268	272	271						
45	249	250	249	250	248	248	249	247	247	245	248	248						
50	224	225	223	225	223	223	224	222	222	221	223	223						
55	198	199	197	199	196	196	197	195	196	194	197	197						
60	170	171	170	171	169	169	169	167	168	167	169	169						
65	142	143	142	143	141	140	141	140	140	139	141	142						
70	114	114	114	115	113	112	112	112	112	111	113	113						
75	86.3	87.1	86.8	87.3	85.2	84.6	84.6	83.9	84.1	83.5	85.4	85.9						
80	60.6	61.2	61.0	61.6	59.6	59.0	58.7	58.3	58.6	58.1	59.8	60.2						
85	38.1	38.8	39.3	39.3	37.9	37.0	36.6	36.2	36.6	36.5	37.8	38.0						
90	19.8	21.4	21.2	21.5	20.3	20.0	19.6	16.4	19.6	19.5	20.7	19.8						
95	9.48	6.78	5.31	8.47	5.88	7.95	8.87	7.03	5.58	7.02	6.20	6.65						
100	1.23	0.76	1.86	1.01	1.56	0.70	3.40	0.88	1.07	0.45	0.93	0.70						
105	2.01	1.69	1.00	0.81	0.95	1.18	2.13	1.67	1.11	0.88	1.05	1.56						
110	3.10	3.01	1.82	1.30	1.80	2.41	3.32	3.40	1.49	1.59	1.88	2.20						
115	4.89	5.15	2.74	2.24	2.57	4.28	5.39	4.85	2.63	2.15	2.29	3.51						
120	5.76	5.72	3.76	2.94	3.47	5.64	6.59	5.74	3.35	3.05	3.14	5.05						
125	6.69	6.53	4.62	4.29	5.39	6.54	7.21	6.35	3.98	3.88	4.47	5.96						
130	6.86	6.55	4.84	4.80	6.23	6.28	7.24	6.49	4.42	4.71	5.94	6.28						
135	6.62	5.85	4.48	5.32	5.82	5.72	6.98	5.20	4.16	5.65	4.63	5.52						
140	5.84	5.44	3.20	4.61	4.55	5.05	5.87	5.10	2.32	4.32	4.46	5.29						
145	5.25	3.82	2.08	4.27	3.50	2.55	5.48	3.94	1.90	2.56	2.64	2.22						
150	2.68	1.32	1.37	2.18	1.47	1.54	3.16	1.53	1.35	2.48	1.65	1.38						
155	1.65	1.73	2.14	1.52	2.08	1.57	1.82	1.71	2.47	1.95	2.02	1.32						
160	1.43	2.57	3.27	2.28	4.21	1.55	2.00	1.82	2.68	2.10	4.18	1.48						
165	3.85	2.00	3.09	2.56	2.49	3.11	4.13	2.16	3.69	2.75	2.01	3.23						
170	2.87	1.57	1.55	1.45	1.55	1.93	3.09	1.84	2.26	1.79	1.50	1.96						
175	1.52	1.54	1.54	1.49	1.50	1.58	1.56	1.54	1.56	1.55	1.53	1.53						
180	1.56	1.57	1.57	1.54	1.57	1.57	1.57	1.58	1.58	1.55	1.57	1.57						

C Range: 0 - 360DEG
 C Interval: 30.0DEG
 Test Speed: HIGH
 Temperature:25.3DEG
 Operators:
 Test Date:2022-06-16

g Range: 0 - 180DEG
 g Interval: 1.0DEG
 Test System:EVERFINE GO-2000B_V1 SYSTEM V2.00.426
 Humidity:65.0%
 Test Distance:8.700m [K=0.9540]
 Remarks: