



# LED STRIPLIGHT FIXTURE

## Premium Series

► **DESIGN & OPTIONS** - LED STRIPLIGHT FIXTURE has a narrow, low-profile design with a smooth PMMA lens for even illumination with no glare. It also features a durable galvanized metal construction with knock outs on both ends, and a 0-10V dimmable driver. Models with battery back-up, power and color adjustable options are also available, letting you set it to either 3,500K, 4,000K or 5,000K and to change the power with a simple switch. The built-in battery back-up ensures 90 minutes of power. It comes with a 120-277V and 4ft and 8ft sizes.

► **INSTALLATION** - Installation is easy: all you have to do is snap together the housing and the lens. Side and end entry points make it easy to connect multiple fixtures to one switch using our connection bracket (sold separately). It can be surface or suspended mounted. Refer to install instructions for detailed steps.

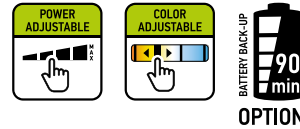
► **APPLICATION** - This LED STRIPLIGHT FIXTURE is perfect for commercial or industrial locations such as: offices, conference rooms, schools, hospitals, hallways, stairwells, basements, workshops, laundry rooms, garages, and storage areas just to name a few. The fixture is Damp location rated and can operate in temperatures between -4+104°F (-20+40°C), allowing it to be utilized in a wide variety of applications and climates.

► **ENERGY SAVINGS & EFFICIENCY** - This fixture provides a lumen output equal to or higher than traditional fluorescent vapor lights and can cut your electric bill by up to 80% instantly. With a lifespan of 54,000 hours, these fixtures are made to last decades under normal operation! This fixture will save you a significant amount of money in its lifetime.

► **CERTIFICATION & WARRANTY** - Buy with confidence: ASD provides a 5-year warranty along with UL and DLC Premium certifications to guarantee top quality products and safety!

Top US certifications allow participation in rebates; please check the rebate programs available in your state.

Catalog number	
Notes	
Type	



## PRODUCT LEGEND:

Family	Series	Size	Dimmable	Watts	CCT	Option	Series
ASD-LSF	5	X	X	XX	XX	XX	XX
LED Striplight fixture		4 = 4 ft 8 = 8 ft	A = Power Adjustable	44 = 22/28/36/44 W 90 = 48/68/90 W	AC = 3,500/4,000/5,000 K	EM = Battery back-up	PRM = Premium

## LED STRIPLIGHT FIXTURE:

Model	Type	Watts	Voltage	Dimmable	Lumens	CCT	Dimensions (LxWxH)	Option	DLC
ASD-LSF5-4A44AC-PRM	4 ft	22/28/36/44 W	120-277 V	0-10 V	3,161/3,879/4,953/5,727 lm	3,500/4,000/5,000 K	46 7/8" x 2 1/2" x 2 11/16"	-	Premium
ASD-LSF5-8A90AC-PRM	8 ft	48/68/90 W	120-277 V	0-10 V	6,224/9,013/12,357 lm	3,500/4,000/5,000 K	93 1/16" x 2 1/2" x 2 11/16"	-	Premium
ASD-LSF5-4A44AC-EM-PRM	4 ft	22/28/36/44 W	120-277 V	0-10 V	3,161/3,879/4,953/5,727 lm	3,500/4,000/5,000 K	46 7/8" x 2 1/2" x 2 11/16"	Battery back-up	Premium
ASD-LSF5-8A90AC-EM-PRM	8 ft	48/68/90 W	120-277 V	0-10 V	6,224/9,013/12,357 lm	3,500/4,000/5,000 K	93 1/16" x 2 1/2" x 2 11/16"	Battery back-up	Premium

## ORDERING INFORMATION:

Model	UPC	Pcs per Carton	Carton Size	Carton Weight	GTIN 14
ASD-LSF5-4A44AC-PRM	810050730242	8	48.3" x 12.5" x 6.7"	39.8 lbs	10810050730249
ASD-LSF5-8A90AC-PRM	810050730273	4	94.6" x 6.4" x 6.7"	43.0 lbs	10810050730270
ASD-LSF5-4A44AC-EM-PRM	810050730259	8	48.3" x 12.5" x 6.7"	47.1 lbs	10810050730256
ASD-LSF5-8A90AC-EM-PRM	810050730280	4	94.6" x 6.4" x 6.7"	47.8 lbs	10810050730287

## ACCESSORIES:

Model	Name	Materials	Weight	Dimensions
ASD-CB-LSF5	Connection bracket for LSF5	Metal	0.2 lbs (0.1 kg)	5 1/4" x 2 3/4" x 5/8"

Model	UPC	Pcs per Carton	Carton Size	Carton Weight	GTIN 14
ASD-CB-LSF5	810050730747	100	14.3" x 5.7" x 8.1"	20.9 lbs	10810050730744

For most up-to-date spec sheets please refer to [asd-lighting.com](http://asd-lighting.com)



# LED STRIPLIGHT FIXTURE

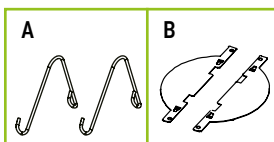
Premium Series

## PRODUCT SPECIFICATIONS:

Construction & Materials	
Lens	Translucent white lens
Housing	Iron
Finish Color	White
Weight	ASD-LSF5-4A44AC-PRM 4 lb (1.8 kg)
	ASD-LSF5-8A90AC-PRM 8.9 lb (4.1 kg)
	ASD-LSF5-4A44AC-EM-PRM 5 lb (2.3 kg)
	ASD-LSF5-8A90AC-EM-PRM 10 lb (4.6 kg)
Environmental System	
Work Environment	Suitable for Damp Locations, IP20
Operating Temperature	-4°F to 104°F (-20°C to 40°C)
L70 life	R > 54,000 hrs, C > 174,000 hrs
Optical System	
Luminous Flux	ASD-LSF5-4A44AC-PRM 3,161/3,879/4,953/5,727 lm
	ASD-LSF5-8A90AC-PRM 6,224/9,013/12,357 lm
	ASD-LSF5-4A44AC-EM-PRM 3,161/3,879/4,953/5,727 lm
	ASD-LSF5-8A90AC-EM-PRM 6,224/9,013/12,357 lm
Color Temperature	3,500/4,000/5,000 K
CRI	80
Electrical System	
Input Voltage	120-277 V
Max input current	ASD-LSF5-4A44AC-PRM 0.41 A
	ASD-LSF5-8A90AC-PRM 0.8 A
	ASD-LSF5-4A44AC-EM-PRM 0.41 A
	ASD-LSF5-8A90AC-EM-PRM 0.8 A
Inrush current (Action time)	ASD-LSF5-4A44AC-PRM 50 A (<1S)
	ASD-LSF5-8A90AC-PRM 55 A (<1S)
	ASD-LSF5-4A44AC-EM-PRM 50 A (<1S)
	ASD-LSF5-8A90AC-EM-PRM 55 A (<1S)
AC input range	min 120 V max 277 V
Off State Power	0 W
Power Consumption	ASD-LSF5-4A44AC-PRM 22/28/36/44 W
	ASD-LSF5-8A90AC-PRM 48/68/90 W
	ASD-LSF5-4A44AC-EM-PRM 22/28/36/44 W
	ASD-LSF5-8A90AC-EM-PRM 48/68/90 W
Power Factor	≥ 0.9
Output voltage	42 V
Max output current	ASD-LSF5-4A44AC-PRM 500 mA/600 mA/800 mA/1 A
	ASD-LSF5-8A90AC-PRM 1.15 A/1.5 A/2 A
	ASD-LSF5-4A44AC-EM-PRM 500 mA/600 mA/800 mA/1 A
	ASD-LSF5-8A90AC-EM-PRM 1.15 A/1.5 A/2 A
Surge protection	2 kV
LED driver class	Class 2
Dimming compatible controls	
Brand	Leviton Lutron Legrand
Model	DS710 NTSTV-DV DVTV-WH H4FBL3PW IP710 NFTV
Regular and Voluntary Certifications	
5-year limited warranty	
DesignLights Consortium (DLC) listed (Classification: Premium series)	
Main: Indoor Luminaires; General Application: Linear Ambient	
Primary Use: Direct Linear Ambient Luminaires	
Certification cULus listed	

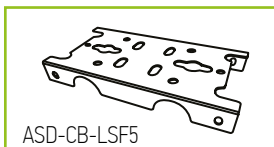
## PACKAGE CONTENTS:

Description	Q-ty
LED Striplight Fixture	1
V Hook (A)	2
J-box mounting plate (B)	2
Box	1
Cut Sheet	2



## OPTIONAL ACCESSORIES:

Connection bracket for LSF5



## INSTALLATION GUIDE

### IMPORTANT SAFETY INFORMATION:

Please read all the instructions below before installation.

- ▶ Make sure that the supply voltage corresponds to the rated product voltage.
- ▶ The product must be installed by a qualified electrician in accordance with the National Electrical Code and corresponding local codes.
- ▶ If the product is damaged, do not use it.

### ⚠ WARNING

**RISK OF PERSONAL INJURY – READ and follow all WARNINGS and installation instructions.**

Keep or give to the owner for future reference.

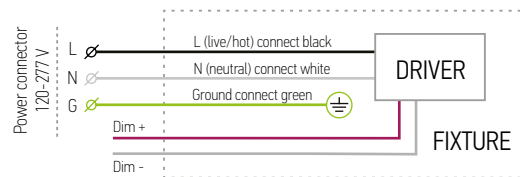
**Risk of cuts:** Wear gloves to prevent cuts or abrasions when removing from carton, handling, installing, and maintaining this product.

**Risk of electric shock:** This product must be installed in accordance with the applicable installation code by a person familiar with the construction and operation of the product and the hazards involved.

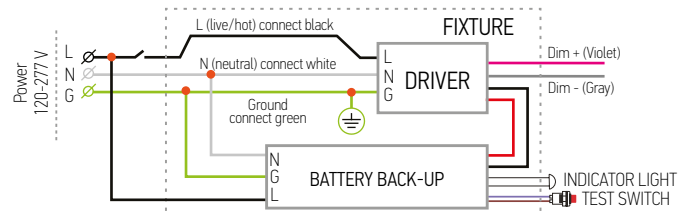
**Risk of Fire:** Minimum 194°F supply conductors. Consult a qualified electrician to ensure correct branch circuit conductor.

ASD® assumes no responsibility for claims arising out of improper or careless installation or handling of this product.

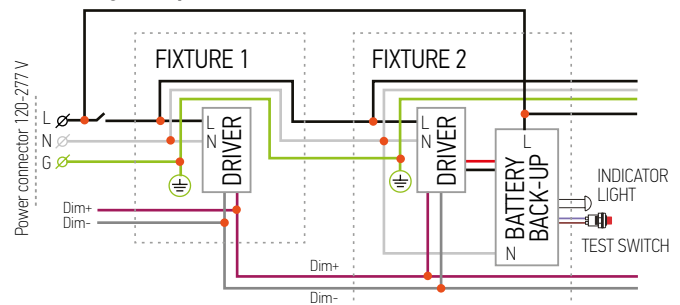
## ELECTRICAL SCHEMATIC DIAGRAM



### with battery back-up



### connecting multiple fixtures



For most up-to-date spec sheets please refer to [asd-lighting.com](http://asd-lighting.com)



# LED STRIPLIGHT FIXTURE

Premium Series

## BATTERY BACK-UP DETAILS

- ▶ Standard CSA C22.2 NO.141, UL924
- ▶ Battery Back-up Lithium Battery
- ▶ Battery Protection: over-charge, over-discharge and short circuit protection
- ▶ The wall switch only controls the main power, it does not affect emergency function.
- ▶ Indicator light modes: Red light ON – the emergency driver is charging in standby mode; Red light OFF – AC power is out, the emergency driver works in emergency mode.
- ▶ Press Test button and release to cut the power to the AC driver and switch the system to emergency mode. The Red light will turn off, and the fixture will decrease in light amount. The system will come back to normal AC mode after about 3 seconds.
- ▶ Batteries Meet 500 cycles of standard CH and standard DCH.
- ▶ RoHS compliant

**AC Operation:** When AC power is present, the LED load from the LED driver is the normal power supply, AC LED driver output current cannot exceed 150W or 4A. The emergency driver will be charging in standby mode as indicated by the green LED light.

**Emergency operation:** When the AC power goes out, the emergency driver detects the AC power outage and automatically switches to the working emergency mode. The green LED light will be off. When the AC power is restored, the emergency driver switches back to AC power and starts re-charging. The green LED light will then turn back on.

### ⚠ WARNING

- ▶ This product should be installed by a qualified electrician. Connecting wires when power is on is not allowed. Power can be turned on after making sure that there is no phenomenon of short circuit and the connection is ok.

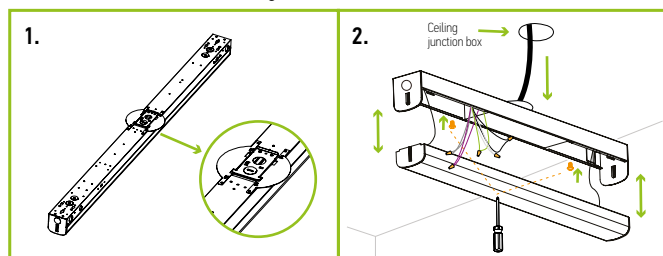
## BATTERY BACK-UP INFORMATION:

Battery capacity	Max emergency output power	Battery back up current	Battery back up operation time	Battery voltage	Full charge/discharge cycles
3,000 mAh	8 W	250 mA	≥ 90 minutes	6.4 V	500 cycles
3,000 mAh	15 W	250 mA	≥ 90 minutes	9.6 V	500 cycles

## INSTALLATION STEPS

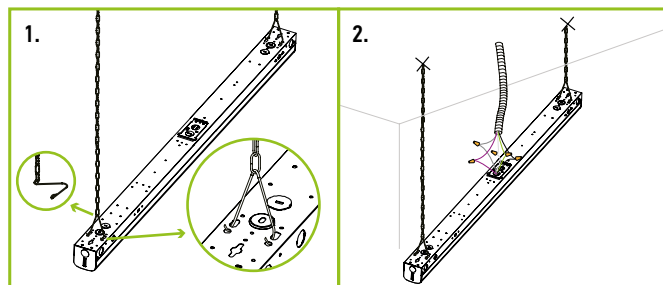
### SURFACE MOUNTING

1. Lock the J-box mounting plate and open the LED module and pass the AC wires through the hole on the back side of fixture.
2. Then source the lamp housing to the ceiling and connect the AC wires and dimming wires (if used). After wiring lift the LED module back to the housing. Finish installation and test the light.



### CHAIN AND V HOOK MOUNTING

1. Insert chain on each hook and insert the hook into the installation holes. Attach the chain to the ceiling and adjust until balanced and secure.
2. Connect wires from fixture to power supply. Contain wires in metal or plastic wire hose. If need to connect one fixture to another please use connection bracket (sold separately).



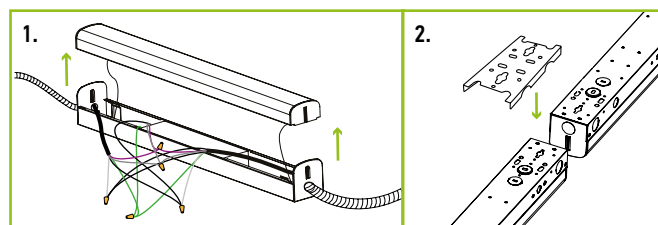
## CONNECTING MULTIPLE FIXTURES

1. Open LED module and remove knockout ring according to your needs on the end or side of the fixture. Feed the AC wires and dimming wires through the knockout hole and connect with fixture wires inside of the luminaire. If 0-10v dimming system is available, connect the purple and gray wires to the corresponding purple and gray wires in the built-in dimming system.

**CAUTION:** Customer supplied AC wire must be 18AWG. The maximum number of fixtures allowed to be linked together is indicated in the following table.

2. If need to source one fixture to another please use connection bracket (sold separately). Repeat the process for the next fixture.

\*Recommended wire thickness should not exceed 18AWG.



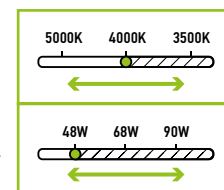
Model	Linkable Quantities Depending on Voltage								
	18 AWG		16 AWG		Model	16 AWG			
	120V	277V	120V	277V		120V	277V		
22 W	16	38	27	63	48 W	8	17	13	29
28 W	13	30	21	49	68 W	5	12	9	20
36 W	10	23	17	38	90 W	4	9	7	15
44 W	8	19	14	31					

## CHANGING COLOR TEMPERATURE:

Change the position of the CT switch on the housing according to the required CT mode.

## CHANGING POWER MODE:

During installation, select the required preset wattage. Do not remove the knock-out cover panel that limits the access of authorized personnel.



For most up-to-date spec sheets please refer to [asd-lighting.com](http://asd-lighting.com)