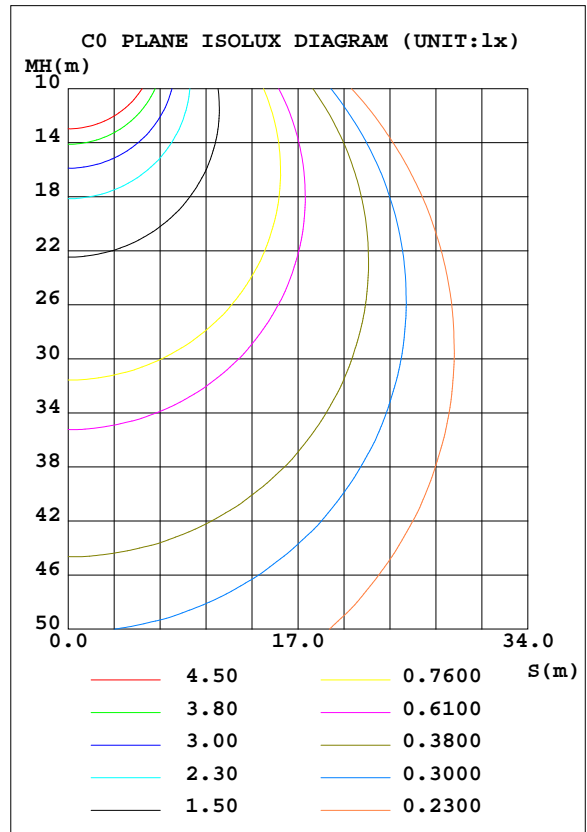
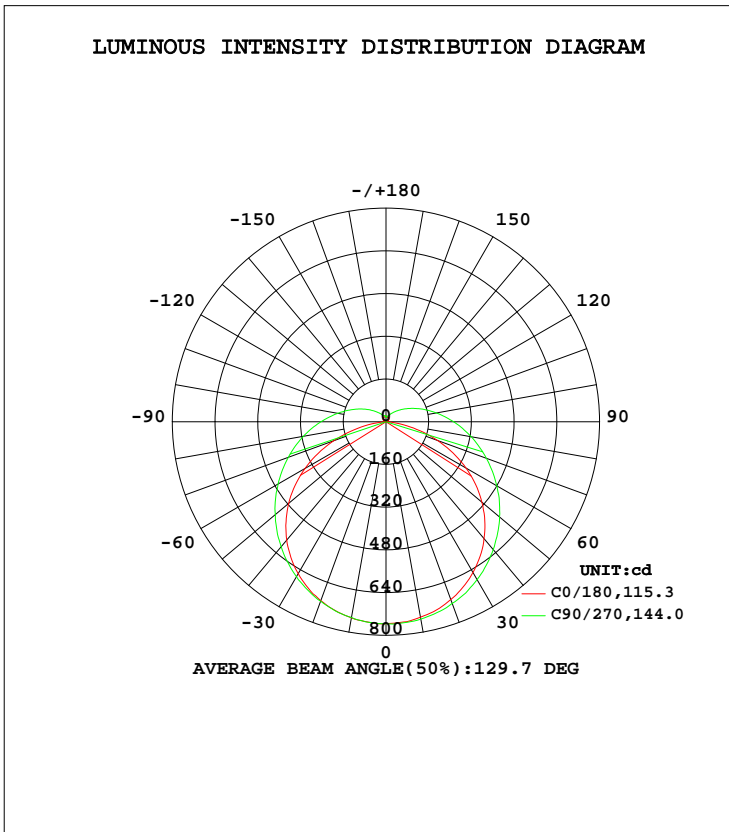


LUMINAIRE PHOTOMETRIC TEST REPORT

Test:U:120.1V I:0.3268A P:35.90W PF:0.9148 Lamp Flux:3081.27x1 lm		
NAME: ASD-LOFT-VF-48D35BK 5000K	TYPE:N/A	WEIGHT:N/A
SPEC.:N/A	DIM.: N/A	SERIAL No.:N/A
MFR.: ASD Lighting corp	SUR.:N/A	Shielding Angle:N/A

DATA OF LAMP		PHOTOMETRIC DATA Eff: 85.83 lm/W			
MODEL	ASD-LOFT-VF-48D35BK	I _{max} (cd)	758.2	S/MH(C0/180)	1.28
NOMINAL POWER(W)		LOR(%)	100.0	S/MH(C90/270)	1.35
RATED VOLTAGE(V)	120	TOTAL FLUX(lm)	3081.3	η UP, DN(C0-180)	6.3,43.3
NOMINAL FLUX(lm)	3081.27	CIE CLASS	SEMI-D.	η UP, DN(C180-360)	6.5,43.9
LAMPS INSIDE	1	η up(%)	12.8	CIBSE SHR NOM	1.50
TEST VOLTAGE(V)	120	η down(%)	87.2	CIBSE SHR MAX	1.55



C Range: 0 - 360DEG
 C Interval: 22.5DEG
 Test Speed: HIGH
 Temperature:25.1DEG
 Operators:Evan
 Test Date:2022-11-19

γ Range: 0 - 180DEG
 γ Interval: 1.0DEG
 Test System:EVERFINE GO-R5000_V2 SYSTEM V2.0.351
 Humidity:42%
 Test Distance:2.532m [K=1.0000]
 Remarks:

ZONAL FLUX DIAGRAM

ZONAL FLUX DIAGRAM:

γ	C0	C45	C90	C135	C180	C225	C270	C315	γ	Φ zone	Φ total	%lum, lamp
10	745.7	744.3	744.5	743.8	743.3	746.7	750.6	748.7	0- 10	71.74	71.74	2.33,2.33
20	713.3	713.2	715.3	711.3	709.0	717.0	724.4	719.7	10- 20	207.3	279.0	9.06,9.06
30	657.1	663.4	670.0	661.3	651.8	668.0	682.3	671.7	20- 30	319.9	598.9	19.4,19.4
40	578.8	595.0	610.8	592.7	570.9	600.1	624.9	605.2	30- 40	396.9	995.8	32.3,32.3
50	475.7	512.1	541.2	510.3	469.1	517.3	555.0	522.1	40- 50	430.2	1426	46.3,46.3
60	349.7	420.4	466.7	419.7	345.6	425.4	478.9	429.5	50- 60	417.4	1843	59.8,59.8
70	208.2	326.3	389.1	326.4	204.9	330.8	400.3	334.9	60- 70	363.5	2207	71.6,71.6
80	68.24	238.1	313.6	239.5	67.42	242.9	324.0	246.7	70- 80	282.5	2489	80.8,80.8
90	0.2430	164.1	244.1	166.3	0.1519	169.6	253.3	172.6	80- 90	198.0	2687	87.2,87.2
100	1.671	109.9	183.7	112.0	1.507	114.3	191.8	116.5	90-100	135.6	2823	91.6,91.6
110	6.227	73.79	134.3	75.33	6.037	77.59	140.9	79.42	100-110	92.44	2915	94.6,94.6
120	11.11	50.49	95.29	51.64	10.99	53.96	100.1	55.24	110-120	62.14	2978	96.6,96.6
130	15.40	36.51	66.07	37.33	15.16	39.02	69.86	40.01	120-130	41.13	3019	98,98
140	18.99	28.12	45.18	28.72	18.65	29.18	48.08	30.78	130-140	26.76	3046	98.8,98.8
150	20.94	23.25	31.91	23.63	20.42	22.16	33.24	25.88	140-150	17.25	3063	99.4,99.4
160	19.42	21.87	23.91	21.22	18.81	17.44	23.76	22.31	150-160	10.69	3073	99.7,99.7
170	18.57	23.70	23.72	19.20	18.26	17.81	19.98	22.37	160-170	5.845	3079	99.9,99.9
180	22.31	21.48	15.85	20.67	22.05	21.71	19.47	19.23	170-180	1.975	3081	100,100
DEG	LUMINOUS INTENSITY:cd									UNIT:lm		

Conical surface Flux(90deg): 1209.6 lm

%lum = 39.3%
%lamp = 39.3%

Conical surface Flux(120deg): 1843.4 lm

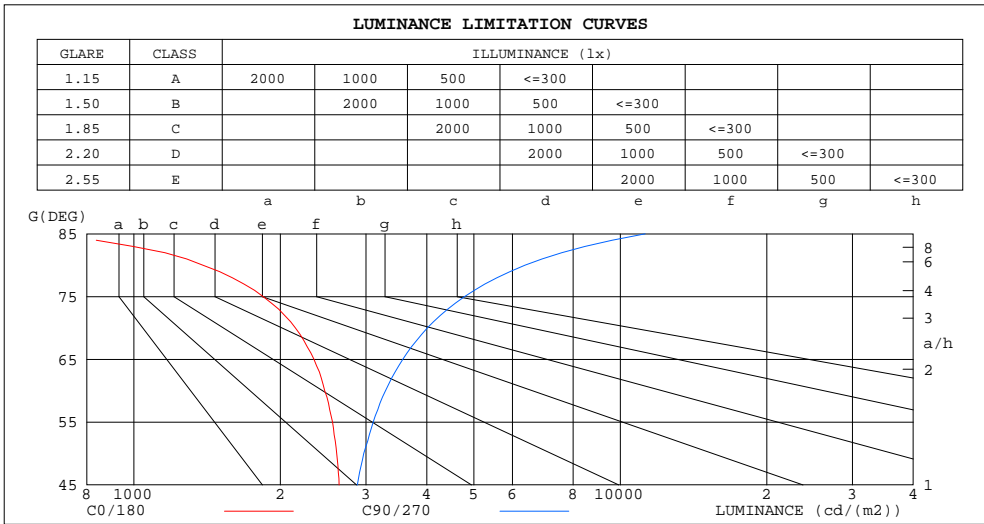
%lum = 59.8%
%lamp = 59.8%

C Range: 0 - 360DEG
C Interval: 22.5DEG
Test Speed: HIGH
Temperature:25.1DEG
Operators:Evan
Test Date:2022-11-19

γ Range: 0 - 180DEG
γ Interval: 1.0DEG
Test System:EVERFINE GO-R5000_V2 SYSTEM V2.0.351
Humidity:42%
Test Distance:2.532m [K=1.0000]
Remarks:

LUMINANCE LIMITATION CURVES

Test:U:120.1V I:0.3268A P:35.90W PF:0.9148 Lamp Flux:3081.27x1 lm		
NAME: LED luminaires	TYPE:N/A	WEIGHT:N/A
SPEC.:N/A	DIM.: N/A	SERIAL No.:N/A
MFR.: Rising-Sun	SUR.:N/A	Shielding Angle:N/A



LUMINANCE cd/(m2)		
G (DEG)	C0/180	C90/270
85	682	11248
80	1387	6367
75	1843	4784
70	2148	4011
65	2345	3571
60	2468	3291
55	2561	3104
50	2612	2968
45	2641	2880

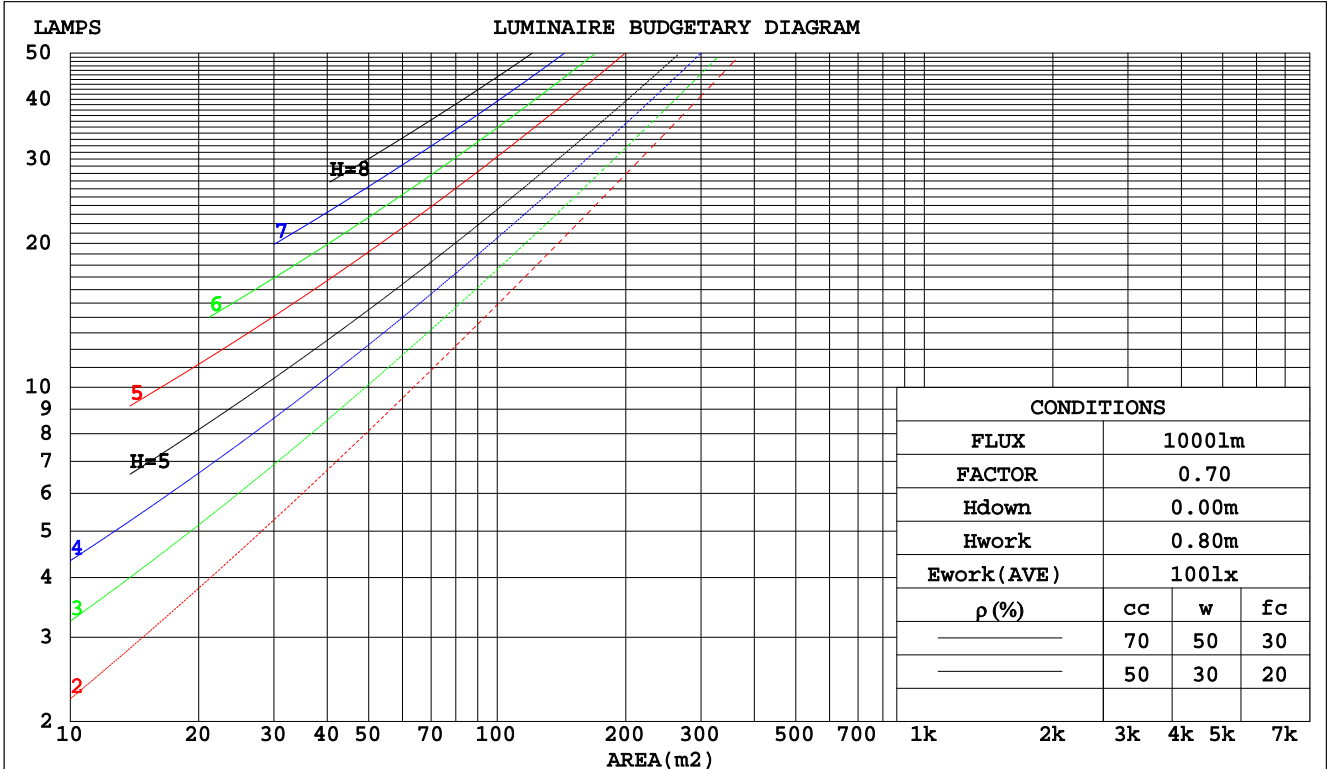
C Range: 0 - 360DEG
 C Interval: 22.5DEG
 Test Speed: HIGH
 Temperature: 25.1DEG
 Operators: Evan
 Test Date: 2022-11-19

γ Range: 0 - 180DEG
 γ Interval: 1.0DEG
 Test System: EVERFINE GO-R5000_V2 SYSTEM V2.0.351
 Humidity: 42%
 Test Distance: 2.532m [K=1.0000]
 Remarks:

CU AND LUMINAIRE BUDGETARY ESTIMATE DIAGRAM

Test:U:120.1V I:0.3268A P:35.90W PF:0.9148 Lamp Flux:3081.27x1 lm		
NAME: LED luminaires	TYPE:N/A	WEIGHT:N/A
SPEC.:N/A	DIM.: N/A	SERIAL No.:N/A
MFR.: Rising-Sun	SUR.:N/A	Shielding Angle:N/A

pcc	80%			70%			50%			30%			10%			0
	50%	30%	10%	50%	30%	10%	50%	30%	10%	50%	30%	10%	50%	30%	10%	0
pw																
pfc	20%			20%			20%			20%			20%			0
RCR	RCR:Room Cavity Ratio															
	Coefficients of Utilization(CU)															
0.0	1.16	1.16	1.16	1.12	1.12	1.12	1.04	1.04	1.04	.97	.97	.97	.90	.90	.90	.87
1.0	.98	.92	.88	.94	.89	.85	.87	.84	.80	.81	.78	.75	.76	.73	.71	.68
2.0	.84	.76	.70	.81	.74	.68	.75	.69	.64	.70	.65	.61	.65	.61	.58	.55
3.0	.73	.64	.57	.70	.62	.55	.65	.58	.53	.61	.55	.50	.57	.52	.48	.45
4.0	.64	.55	.47	.62	.53	.46	.58	.50	.44	.54	.47	.42	.50	.45	.40	.38
5.0	.57	.47	.40	.55	.46	.40	.51	.44	.38	.48	.41	.36	.45	.39	.35	.32
6.0	.51	.42	.35	.49	.41	.34	.46	.39	.33	.43	.37	.32	.40	.35	.30	.28
7.0	.46	.37	.31	.45	.36	.30	.42	.34	.29	.39	.33	.28	.37	.31	.27	.24
8.0	.42	.33	.27	.41	.32	.27	.38	.31	.26	.36	.29	.25	.34	.28	.24	.22
9.0	.38	.30	.24	.37	.29	.24	.35	.28	.23	.33	.27	.22	.31	.26	.21	.19
10.0	.35	.27	.22	.34	.27	.21	.32	.25	.21	.31	.24	.20	.29	.23	.19	.18



C Range: 0 - 360DEG
 C Interval: 22.5DEG
 Test Speed: HIGH
 Temperature:25.1DEG
 Operators:Evan
 Test Date:2022-11-19

γ Range: 0 - 180DEG
 γ Interval: 1.0DEG
 Test System:EVERFINE GO-R5000_V2 SYSTEM V2.0.351
 Humidity:42%
 Test Distance:2.532m [K=1.0000]
 Remarks:

WEC AND CCEC

Test:U:120.1V I:0.3268A P:35.90W PF:0.9148 Lamp Flux:3081.27x1 lm		
NAME: LED luminaires	TYPE:N/A	WEIGHT:N/A
SPEC.:N/A	DIM.: N/A	SERIAL No.:N/A
MFR.: Rising-Sun	SUR.:N/A	Shielding Angle:N/A

ρcc	80%			70%			50%			30%			10%			0
ρw	50%	30%	10%	50%	30%	10%	50%	30%	10%	50%	30%	10%	50%	30%	10%	0
ρfc	20%			20%			20%			20%			20%			0
RCR	RCR:Room Cavity Ratio						Wall Exitance Coefficients(WEC)									
0.0																
1.0	.372	.212	.067	.361	.206	.065	.340	.195	.062	.321	.185	.059	.303	.176	.057	
2.0	.327	.179	.055	.317	.174	.054	.298	.166	.051	.281	.158	.049	.265	.150	.047	
3.0	.292	.156	.047	.283	.152	.046	.267	.144	.044	.251	.138	.042	.236	.131	.041	
4.0	.264	.137	.040	.256	.134	.040	.241	.128	.038	.227	.122	.037	.214	.116	.035	
5.0	.241	.123	.036	.234	.120	.035	.220	.115	.034	.207	.109	.033	.195	.104	.031	
6.0	.221	.111	.032	.215	.108	.031	.202	.104	.030	.191	.099	.029	.180	.095	.028	
7.0	.204	.101	.029	.198	.099	.028	.187	.095	.027	.176	.090	.026	.166	.086	.025	
8.0	.190	.093	.026	.184	.091	.026	.174	.087	.025	.164	.083	.024	.155	.080	.023	
9.0	.177	.086	.024	.172	.084	.024	.163	.080	.023	.154	.077	.022	.145	.074	.021	
10.0	.166	.080	.022	.161	.078	.022	.153	.075	.021	.144	.072	.020	.136	.069	.020	

ρcc	80%			70%			50%			30%			10%			0
ρw	50%	30%	10%	50%	30%	10%	50%	30%	10%	50%	30%	10%	50%	30%	10%	0
ρfc	20%			20%			20%			20%			20%			0
RCR	RCR:Room Cavity Ratio						Ceiling Cavity Exitance Coefficients(CCEC)									
0.0	.288	.288	.288	.246	.246	.246	.168	.168	.168	.096	.096	.096	.031	.031	.031	
1.0	.283	.254	.228	.242	.218	.196	.166	.150	.135	.095	.087	.079	.031	.028	.025	
2.0	.276	.231	.193	.236	.198	.167	.162	.137	.116	.093	.080	.068	.030	.026	.022	
3.0	.268	.214	.170	.230	.184	.148	.158	.128	.104	.091	.075	.061	.029	.024	.020	
4.0	.260	.201	.156	.223	.174	.135	.154	.121	.095	.089	.071	.056	.029	.023	.019	
5.0	.253	.191	.146	.217	.165	.127	.150	.116	.090	.087	.068	.053	.028	.022	.018	
6.0	.245	.183	.138	.211	.159	.121	.145	.111	.085	.084	.065	.051	.027	.021	.017	
7.0	.238	.176	.133	.205	.153	.116	.142	.107	.082	.082	.063	.049	.027	.021	.016	
8.0	.232	.171	.129	.199	.148	.113	.138	.104	.080	.080	.061	.048	.026	.020	.016	
9.0	.225	.166	.126	.194	.144	.110	.134	.101	.078	.078	.060	.047	.025	.020	.015	
10.0	.219	.162	.123	.189	.140	.108	.131	.099	.077	.077	.058	.046	.025	.019	.015	

C Range: 0 - 360DEG
 C Interval: 22.5DEG
 Test Speed: HIGH
 Temperature:25.1DEG
 Operators:Evan
 Test Date:2022-11-19

γ Range: 0 - 180DEG
 γ Interval: 1.0DEG
 Test System:EVERFINE GO-R5000_V2 SYSTEM V2.0.351
 Humidity:42%
 Test Distance:2.532m [K=1.0000]
 Remarks:

UGR(Unified Glare Rating) Table

Test:U:120.1V I:0.3268A P:35.90W PF:0.9148 Lamp Flux:3081.27x1 lm										
NAME: LED luminaires					TYPE:N/A			WEIGHT:N/A		
SPEC.:N/A					DIM.: N/A			SERIAL No.:N/A		
MFR.: Rising-Sun					SUR.:N/A			Shielding Angle:N/A		
ceiling/cavity	0.7	0.7	0.5	0.5	0.3	0.7	0.7	0.5	0.5	0.3
walls	0.5	0.3	0.5	0.3	0.3	0.5	0.3	0.5	0.3	0.3
working plane	0.2	0.2	0.2	0.2	0.2	0.2	0.2	0.2	0.2	0.2
Room dimensions	Viewed crosswise					Viewed endwise				
x = 2H y = 2H	15.1	16.6	15.6	17.0	17.5	16.3	17.7	16.7	18.1	18.6
3H	16.6	18.0	17.1	18.4	18.9	18.7	20.0	19.2	20.5	21.0
4H	17.2	18.4	17.7	18.9	19.4	20.0	21.3	20.5	21.7	22.3
6H	17.5	18.7	18.0	19.2	19.8	21.5	22.6	22.0	23.1	23.7
8H	17.6	18.7	18.1	19.2	19.8	22.3	23.4	22.8	23.9	24.5
12H	17.6	18.7	18.1	19.2	19.8	23.2	24.3	23.7	24.8	25.4
4H 2H	16.0	17.3	16.5	17.8	18.3	16.9	18.1	17.4	18.6	19.1
3H	17.8	18.9	18.3	19.4	20.0	19.5	20.6	20.1	21.2	21.7
4H	18.5	19.5	19.1	20.1	20.7	21.1	22.1	21.6	22.6	23.2
6H	19.1	20.0	19.6	20.5	21.2	22.7	23.6	23.3	24.2	24.8
8H	19.2	20.1	19.8	20.6	21.3	23.6	24.5	24.2	25.1	25.7
12H	19.3	20.1	19.9	20.7	21.3	24.7	25.5	25.3	26.1	26.8
8H 4H	19.4	20.2	19.9	20.8	21.4	21.4	22.3	22.0	22.8	23.5
6H	20.2	20.9	20.9	21.6	22.3	23.4	24.1	24.0	24.7	25.4
8H	20.6	21.2	21.2	21.8	22.6	24.5	25.1	25.1	25.8	26.5
12H	20.8	21.4	21.5	22.0	22.8	25.8	26.4	26.5	27.0	27.8
12H 4H	19.6	20.4	20.2	21.0	21.7	21.4	22.2	22.0	22.8	23.5
6H	20.7	21.3	21.3	22.0	22.7	23.5	24.1	24.1	24.8	25.5
8H	21.2	21.7	21.9	22.4	23.1	24.7	25.3	25.4	25.9	26.7
Variations with the observer position at spacings:										
S = 1.0H	+ 0.1 / - 0.2					+ 0.1 / - 0.1				
1.5H	+ 0.2 / - 0.3					+ 0.2 / - 0.3				
2.0H	+ 0.2 / - 0.4					+ 0.2 / - 0.4				

CIE Pub.117 Corrected 3081 lm Total Lamp Luminous Flux.(8log(F/F0) = 3.9)

C Range: 0 - 360DEG
 C Interval: 22.5DEG
 Test Speed: HIGH
 Temperature:25.1DEG
 Operators:Evan
 Test Date:2022-11-19

γ Range: 0 - 180DEG
 γ Interval: 1.0DEG
 Test System:EVERFINE GO-R5000_V2 SYSTEM V2.0.351
 Humidity:42%
 Test Distance:2.532m [K=1.0000]
 Remarks:

UTILIZATION FACTORS TABLE

Test:U:120.1V I:0.3268A P:35.90W PF:0.9148 Lamp Flux:3081.27x1 lm		
NAME: LED luminaires	TYPE:N/A	WEIGHT:N/A
SPEC.:N/A	DIM.: N/A	SERIAL No.:N/A
MFR.: Rising-Sun	SUR.:N/A	Shielding Angle:N/A

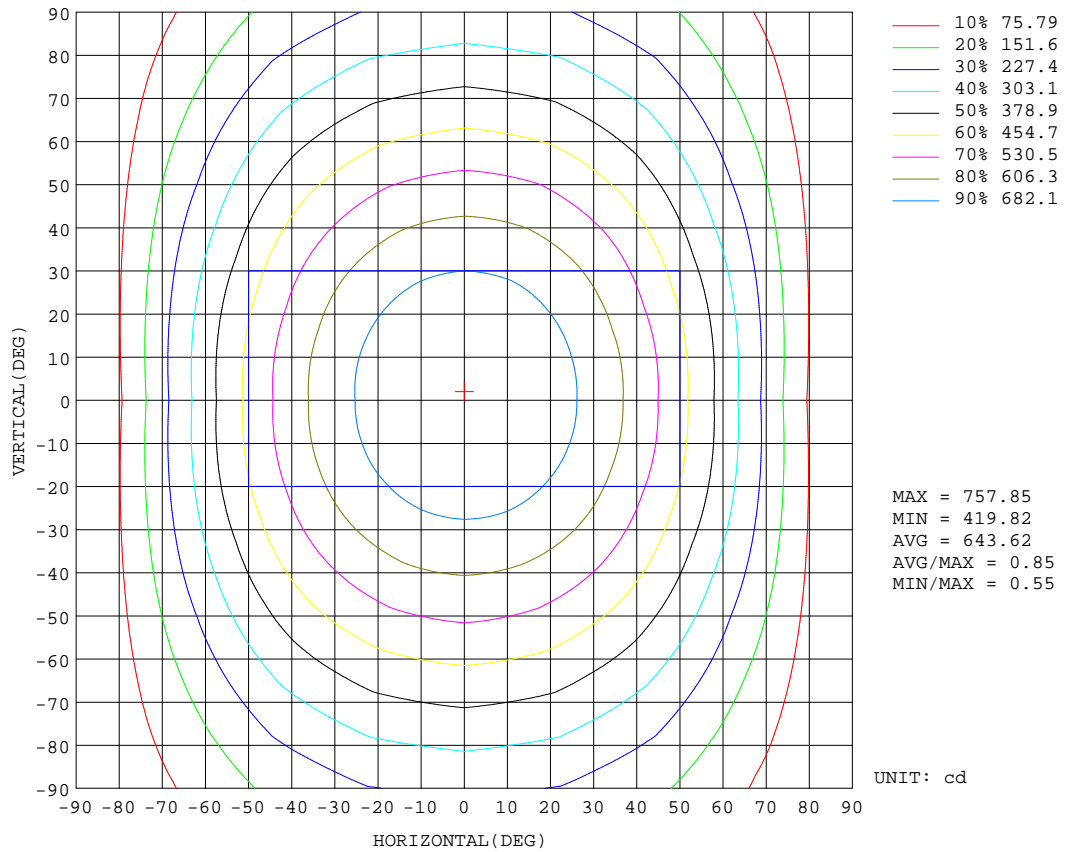
REFLECTANCE										
Ceiling	0.8	0.8	0.8	0.7	0.7	0.7	0.5	0.5	0.5	0
Walls	0.7	0.5	0.3	0.7	0.5	0.3	0.7	0.5	0.3	0
Working plane	0.2	0.2	0.2	0.2	0.2	0.2	0.2	0.2	0.2	0
ROOM INDEX	UTILIZATION FACTORS(PERCENT) $k(RI) \times RCR = 5$									
k = 0.60	50	38	31	49	37	30	47	37	30	23
0.80	59	47	39	58	46	38	55	45	38	30
1.00	67	55	47	66	54	46	62	55	45	37
1.25	74	62	54	72	61	53	68	59	52	43
1.50	79	68	59	77	66	58	73	64	57	47
2.00	87	76	68	84	74	67	79	71	64	54
2.50	91	81	74	88	79	72	82	75	69	58
3.00	95	86	79	91	83	77	85	79	74	62
4.00	99	92	85	96	89	83	89	84	79	66
5.00	102	96	90	98	93	88	92	87	83	70
ROOM INDEX	UF(total)									Direct
According to DIN EN 13032-2 2004			Suspended				SHRNOM = 1.25			

C Range: 0 - 360DEG
 C Interval: 22.5DEG
 Test Speed: HIGH
 Temperature:25.1DEG
 Operators:Evan
 Test Date:2022-11-19

γ Range: 0 - 180DEG
 γ Interval: 1.0DEG
 Test System:EVERFINE GO-R5000_V2 SYSTEM V2.0.351
 Humidity:42%
 Test Distance:2.532m [K=1.0000]
 Remarks:

ISOCANDELA DIAGRAM

Test:U:120.1V I:0.3268A P:35.90W PF:0.9148 Lamp Flux:3081.27x1 lm		
NAME: LED luminaires	TYPE:N/A	WEIGHT:N/A
SPEC.:N/A	DIM.: N/A	SERIAL No.:N/A
MFR.: Rising-Sun	SUR.:N/A	Shielding Angle:N/A

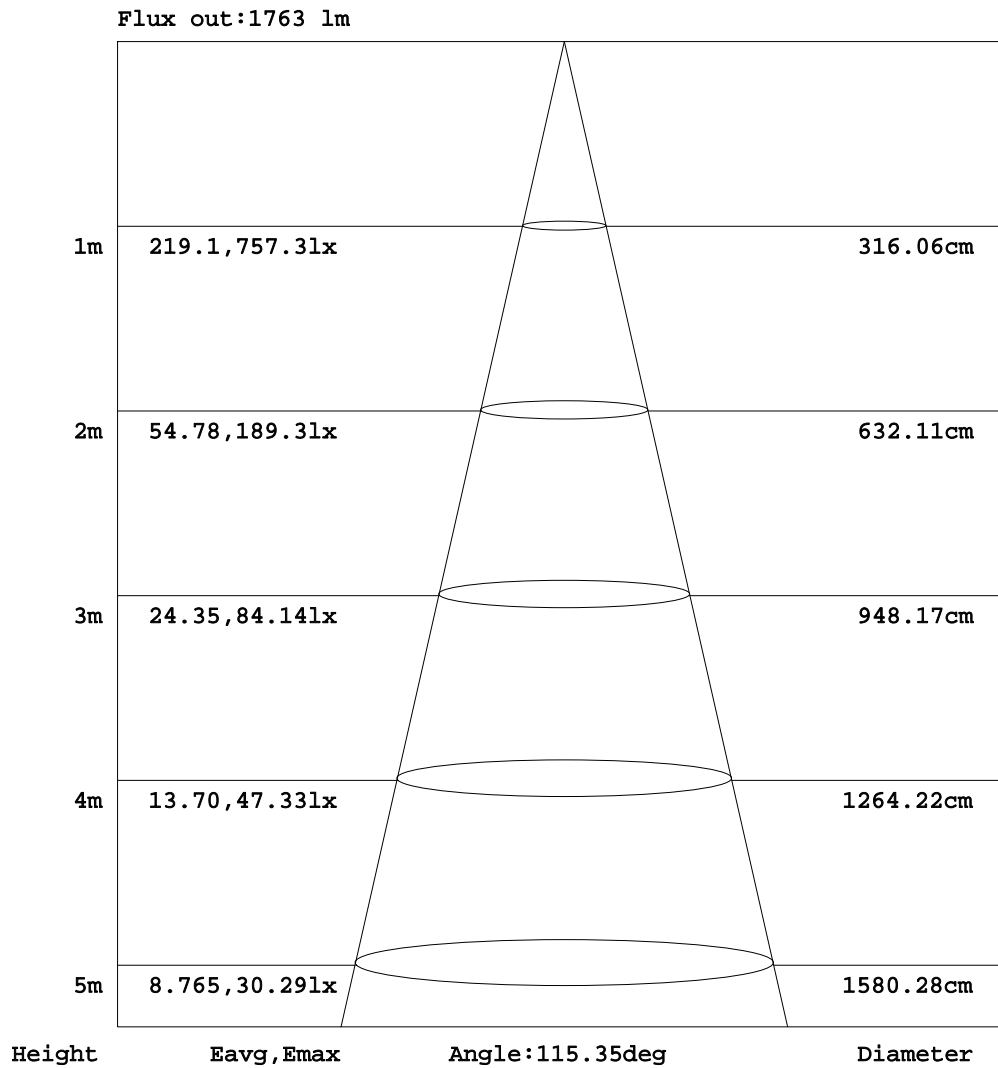


C Range: 0 - 360DEG
 C Interval: 22.5DEG
 Test Speed: HIGH
 Temperature:25.1DEG
 Operators:Evan
 Test Date:2022-11-19

γ Range: 0 - 180DEG
 γ Interval: 1.0DEG
 Test System:EVERFINE GO-R5000_V2 SYSTEM V2.0.351
 Humidity:42%
 Test Distance:2.532m [K=1.0000]
 Remarks:

AAI Figure

Test:U:120.1V I:0.3268A P:35.90W PF:0.9148 Lamp Flux:3081.27x1 lm		
NAME: LED luminaires	TYPE:N/A	WEIGHT:N/A
SPEC.:N/A	DIM.: N/A	SERIAL No.:N/A
MFR.: Rising-Sun	SUR.:N/A	Shielding Angle:N/A



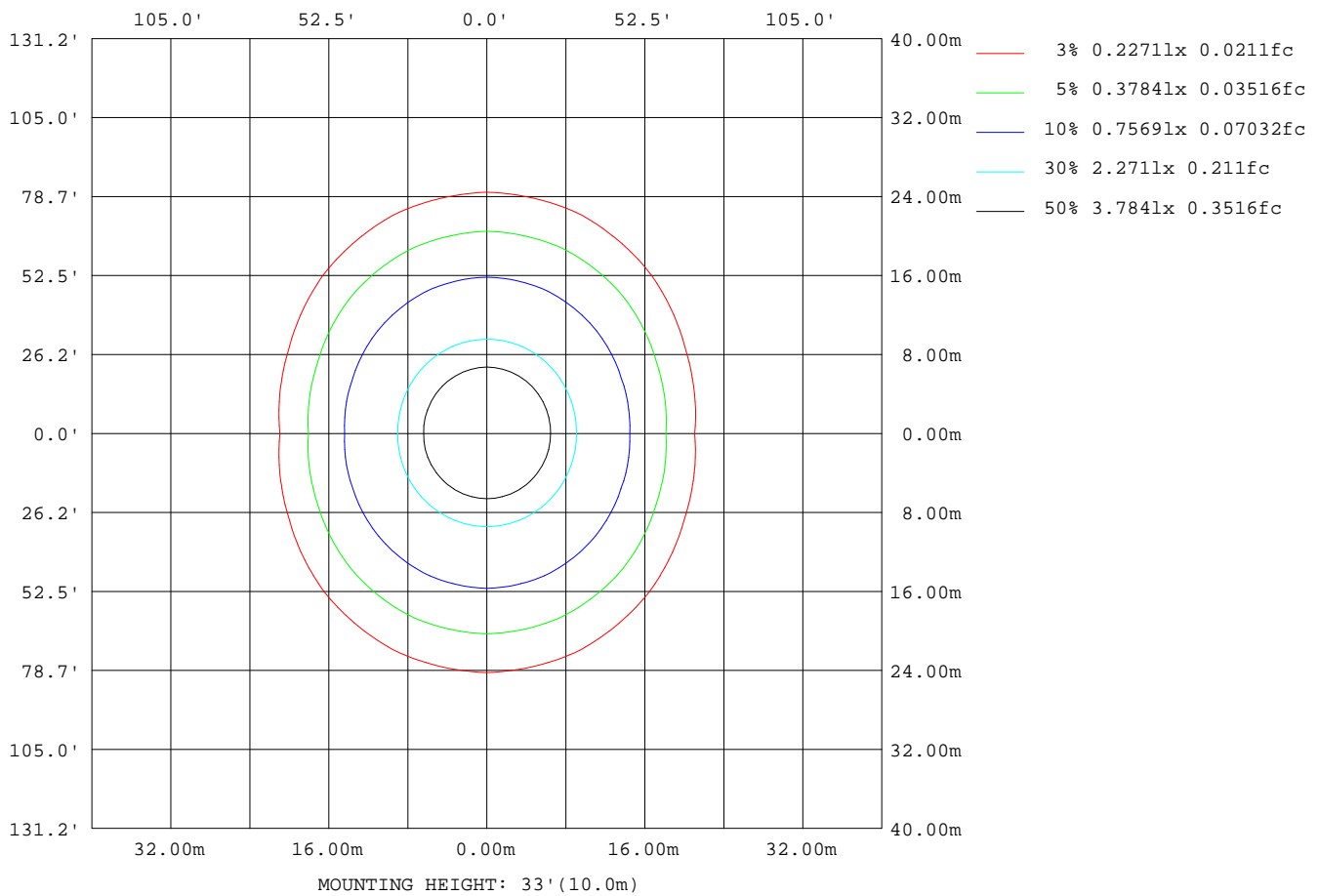
Note:The Curves indicate the illuminated area and the average illumination when the luminaire is at different distance.

C Range: 0 - 360DEG
 C Interval: 22.5DEG
 Test Speed: HIGH
 Temperature:25.1DEG
 Operators:Evan
 Test Date:2022-11-19

γ Range: 0 - 180DEG
 γ Interval: 1.0DEG
 Test System:EVERFINE GO-R5000_V2 SYSTEM V2.0.351
 Humidity:42%
 Test Distance:2.532m [K=1.0000]
 Remarks:

ISOLUX DIAGRAM

Test:U:120.1V I:0.3268A P:35.90W PF:0.9148 Lamp Flux:3081.27x1 lm		
NAME: LED luminaires	TYPE:N/A	WEIGHT:N/A
SPEC.:N/A	DIM.: N/A	SERIAL No.:N/A
MFR.: Rising-Sun	SUR.:N/A	Shielding Angle:N/A



C Range: 0 - 360DEG
 C Interval: 22.5DEG
 Test Speed: HIGH
 Temperature:25.1DEG
 Operators:Evan
 Test Date:2022-11-19

γ Range: 0 - 180DEG
 γ Interval: 1.0DEG
 Test System:EVERFINE GO-R5000_V2 SYSTEM V2.0.351
 Humidity:42%
 Test Distance:2.532m [K=1.0000]
 Remarks:

LED Avg.L Report

Test:U:120.1V I:0.3268A P:35.90W PF:0.9148 Lamp Flux:3081.27x1 lm		
NAME: LED luminaires	TYPE:N/A	WEIGHT:N/A
SPEC.:N/A	DIM.: N/A	SERIAL No.:N/A
MFR.: Rising-Sun	SUR.:N/A	Shielding Angle:N/A

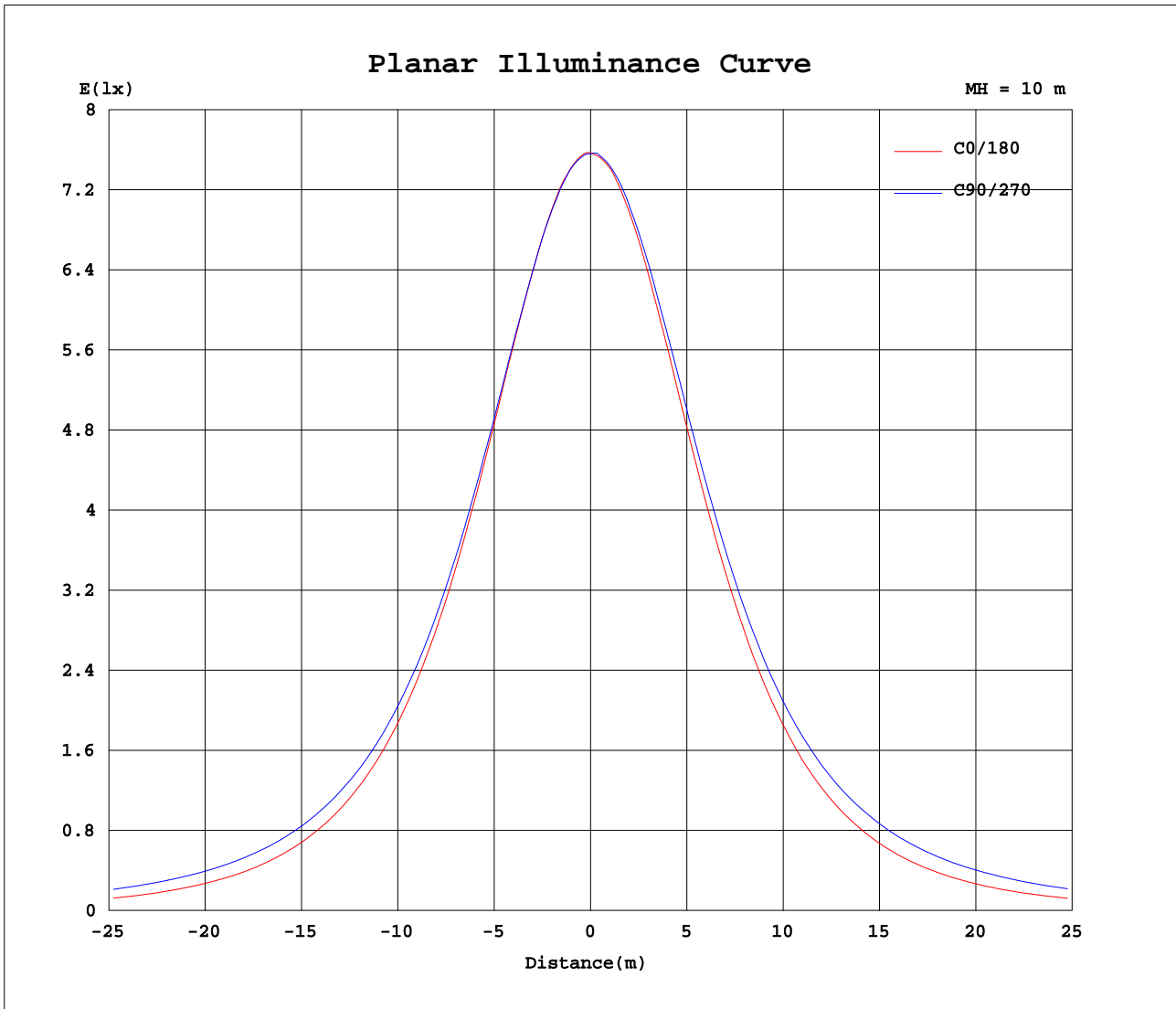
AvgL	cd/m2
L_0~180(65)av	2325
L_0~180(75)av	1831
L_0~180(85)av	715
L_90~270(65)av	3621
L_90~270(75)av	4855
L_90~270(85)av	11447
L_45(65)av	3140
L_45(75)av	3873
L_45(85)av	8208

Standard: GB/T 29293-2012

C Range: 0 - 360DEG
 C Interval: 22.5DEG
 Test Speed: HIGH
 Temperature:25.1DEG
 Operators:Evan
 Test Date:2022-11-19

γ Range: 0 - 180DEG
 γ Interval: 1.0DEG
 Test System:EVERFINE GO-R5000_V2 SYSTEM V2.0.351
 Humidity:42%
 Test Distance:2.532m [K=1.0000]
 Remarks:

Planar Illuminance Curve



C Range: 0 - 360DEG
 C Interval: 22.5DEG
 Test Speed: HIGH
 Temperature: 25.1DEG
 Operators: Evan
 Test Date: 2022-11-19

γ Range: 0 - 180DEG
 γ Interval: 1.0DEG
 Test System: EVERFINE GO-R5000_V2 SYSTEM V2.0.351
 Humidity: 42%
 Test Distance: 2.532m [K=1.0000]
 Remarks:

LUMINOUS DISTRIBUTION INTENSITY DATA

Test:U:120.1V I:0.3268A P:35.90W PF:0.9148 Lamp Flux:3081.27x1 lm		
NAME: LED luminaires	TYPE:N/A	WEIGHT:N/A
SPEC.:N/A	DIM.: N/A	SERIAL No.:N/A
MFR.: Rising-Sun	SUR.:N/A	Shielding Angle:N/A

Table--1

UNIT: cd

C(DEG) γ (DEG)	0	22.5	45	67.5	90	112.5	135	157.5	180	202.5	225	247.5	270	292.5	315	337.5			
0	756	756	756	756	756	756	756	756	756	756	756	756	756	756	756	756			
5	754	753	752	753	754	753	753	752	753	753	754	756	756	757	754	755			
10	746	745	744	746	745	746	744	745	743	746	747	749	751	750	749	747			
15	732	732	732	733	733	732	731	730	730	731	735	738	740	740	737	733			
20	713	714	713	715	715	714	711	711	709	713	717	723	724	725	720	716			
25	688	689	690	694	695	694	689	685	683	688	695	702	707	705	699	692			
30	657	659	663	668	670	667	661	656	652	658	668	678	682	681	672	662			
35	621	624	630	639	642	638	628	620	615	623	636	650	655	652	640	627			
40	579	582	595	606	611	606	593	581	571	582	600	617	625	620	605	586			
45	529	538	555	571	578	571	554	534	523	536	560	582	591	586	565	542			
50	476	487	512	534	541	534	510	485	469	487	517	544	555	548	522	491			
55	416	433	467	495	505	494	466	431	410	432	472	505	518	508	477	436			
60	350	375	420	455	467	454	420	374	346	375	425	464	479	468	429	378			
65	281	315	373	414	428	414	373	316	276	315	378	423	440	426	382	318			
70	208	255	326	374	389	373	326	256	205	256	331	382	400	385	335	258			
75	135	198	281	334	351	334	282	200	134	199	285	342	361	345	289	201			
80	68.2	145	238	296	314	296	239	149	67.4	148	243	303	324	306	247	150			
85	16.8	102	199	258	278	259	201	105	18.5	105	204	266	288	269	207	106			
90	0.24	69.4	164	224	244	225	166	72.6	0.15	72.5	170	232	253	234	173	74.0			
95	0.42	47.3	134	193	213	194	136	49.7	0.25	50.4	139	200	221	202	143	51.8			
100	1.67	34.1	110	165	184	166	112	36.1	1.51	36.7	114	171	192	173	117	38.1			
105	3.80	26.5	89.9	140	158	141	91.8	28.0	3.60	28.7	93.9	146	165	148	96.0	30.0			
110	6.23	22.2	73.8	118	134	119	75.3	23.3	6.04	24.0	77.6	123	141	124	79.4	25.1			
115	8.70	19.8	60.8	99.0	114	99.9	62.3	20.7	8.57	21.3	64.4	104	119	105	66.0	22.3			
120	11.1	18.5	50.5	82.7	95.3	83.5	51.6	19.2	11.0	19.7	54.0	87.1	100	88.1	55.2	20.6			
125	13.4	17.7	42.6	68.9	79.4	69.7	43.6	18.4	13.2	18.8	45.6	72.8	83.9	73.7	46.8	19.5			
130	15.4	17.4	36.5	57.0	66.1	57.8	37.3	18.0	15.2	18.2	39.0	60.7	69.9	61.6	40.0	18.9			
135	17.3	17.3	31.7	47.6	54.3	48.1	32.4	17.8	17.0	17.4	33.6	50.7	58.0	51.5	34.7	18.5			
140	19.0	17.3	28.1	40.0	45.2	40.4	28.7	17.7	18.7	17.1	29.2	42.1	48.1	43.4	30.8	18.5			
145	20.6	18.5	25.3	34.0	37.8	34.3	25.9	18.0	20.2	17.3	25.4	35.0	39.9	37.0	28.0	18.7			
150	20.9	20.1	23.3	29.3	31.9	29.6	23.6	19.2	20.4	18.2	22.2	29.1	33.2	31.8	25.9	19.3			
155	20.5	21.6	21.6	25.7	27.4	25.8	21.9	19.9	19.8	18.5	19.4	24.6	27.9	27.6	24.1	20.2			
160	19.4	22.3	21.9	22.8	23.9	22.9	21.2	19.2	18.8	18.4	17.4	21.3	23.8	24.2	22.3	21.6			
165	17.9	22.4	23.2	22.6	22.5	22.2	19.5	18.8	17.4	17.3	17.0	17.6	21.7	21.7	21.7	21.8			
170	18.6	22.8	23.7	23.8	23.7	20.5	19.2	19.2	18.3	18.2	17.8	17.6	20.0	22.3	22.4	22.3			
175	20.7	21.4	23.5	23.8	20.4	18.5	20.3	20.7	20.6	20.6	20.2	19.1	16.6	20.0	22.3	22.0			
180	22.3	21.9	21.5	19.7	15.9	19.6	20.7	22.1	22.1	22.1	21.7	21.2	19.5	15.1	19.2	21.0			

C Range: 0 - 360DEG
 C Interval: 22.5DEG
 Test Speed: HIGH
 Temperature:25.1DEG
 Operators:Evan
 Test Date:2022-11-19

γ Range: 0 - 180DEG
 γ Interval: 1.0DEG
 Test System:EVERFINE GO-R5000_V2 SYSTEM V2.0.351
 Humidity:42%
 Test Distance:2.532m [K=1.0000]
 Remarks: