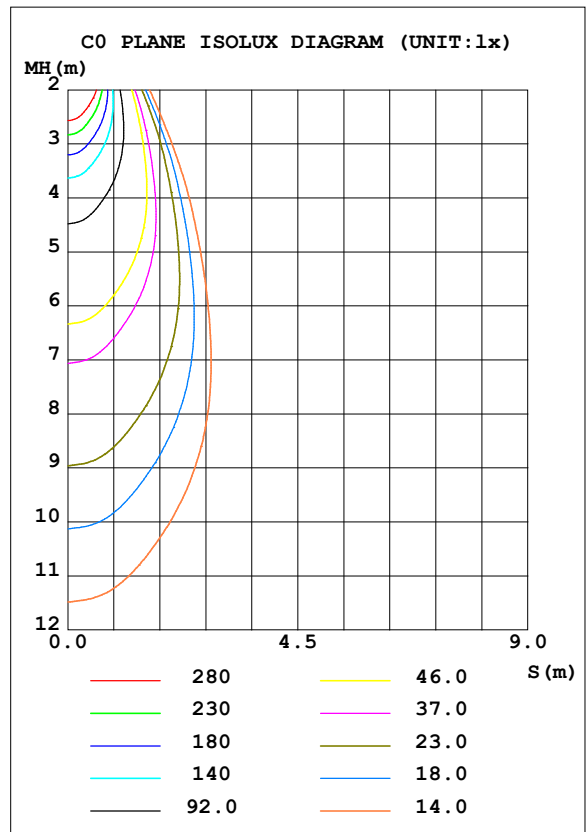
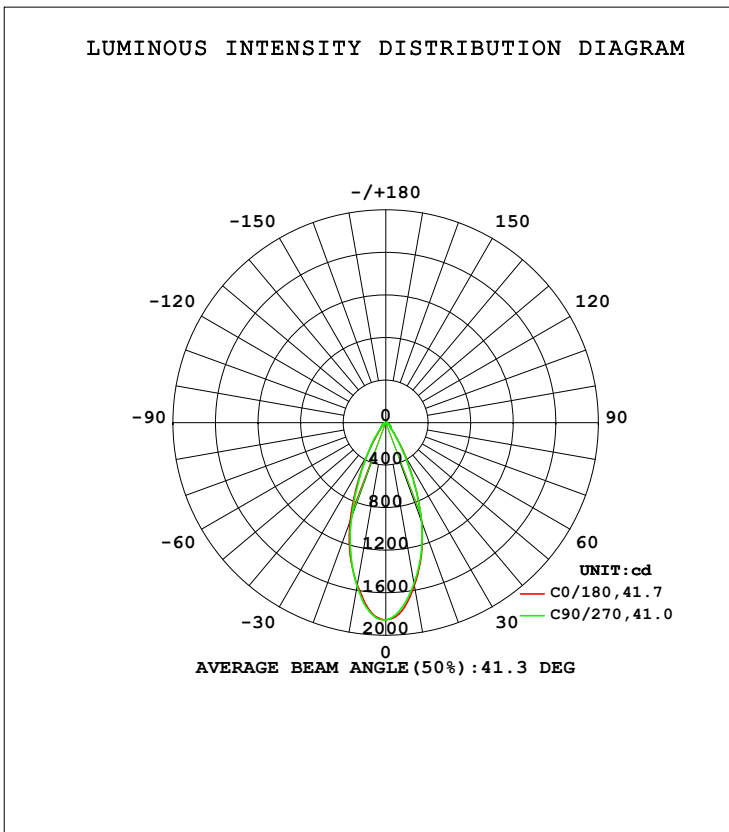


LUMINAIRE PHOTOMETRIC TEST REPORT

Test:U:119.96V I:0.1095A P:12.937W PF:0.9461 Freq:59.98Hz Lamp Flux:1050.2x1 lm		
NAME: ASD-CD-TR-4D15AC-WH	TYPE:	WEIGHT:
SPEC.:4000K 90	DIM.:	SERIAL No.:
MFR.: ASD Lighting Corp	SUR.:	Shielding Angle:

DATA OF LAMP		PHOTOMETRIC DATA Eff: 81.18 lm/W			
MODEL		I _{max} (cd)	1859	S/MH (C0/180)	0.66
NOMINAL POWER (W)	15	LOR (%)	100.0	S/MH (C90/270)	0.65
RATED VOLTAGE (V)	120	TOTAL FLUX (lm)	1050.2	<input type="checkbox"/> UP, DN (C0-180)	0.0, 49.7
NOMINAL FLUX (lm)	1050.2	CIE CLASS	DIRECT	<input type="checkbox"/> UP, DN (C180-360)	0.0, 50.3
LAMPS INSIDE	1	<input type="checkbox"/> up (%)	0.0	CIBSE SHR NOM	0.50
TEST VOLTAGE (V)	120	<input type="checkbox"/> down (%)	100.0	CIBSE SHR MAX	0.70



C Range: 0 - 360DEG
 C Interval: 22.5DEG
 Test Speed: HIGH
 Temperature: 25.3DEG
 Operators:
 Test Date: 2021-09-28

Range: 0 - 90DEG
 Interval: 1.0DEG
 Test System: EVERFINE GO-SPEX500_V1 SYSTEM V2.00.421
 Humidity: 65.0%
 Test Distance: 3.080m [K=1.0000]
 Remarks:

ZONAL FLUX DIAGRAM

ZONAL FLUX DIAGRAM:

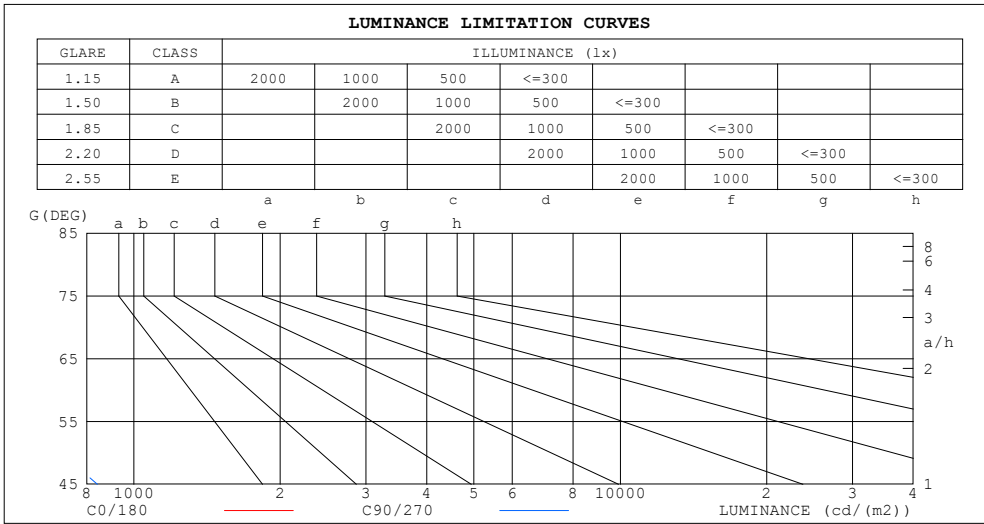
mm	C0	C45	C90	C135	C180	C225	C270	C315	mm	□ zone	□ total	%lum, lamp
10	1553	1523	1531	1523	1549	1584	1559	1580	0- 10	161.6	161.6	15.4,15.4
20	987.9	1038	985.9	988.4	982.7	970.4	940.7	1026	10- 20	356.2	517.8	49.3,49.3
30	381.8	388.0	367.3	362.4	353.2	356.2	355.4	402.6	20- 30	295.2	813.0	77.4,77.4
40	94.84	93.55	92.43	89.96	88.18	98.18	96.68	105.9	30- 40	123.2	936.2	89.1,89.1
50	50.65	51.09	51.62	49.59	49.34	49.40	49.33	50.33	40- 50	51.08	987.3	94,94
60	29.37	27.99	28.90	27.44	28.63	29.82	29.59	30.28	50- 60	34.63	1022	97.3,97.3
70	11.72	10.45	9.982	10.26	11.23	12.27	11.45	12.43	60- 70	19.29	1041	99.1,99.1
80	4.221	3.133	2.756	3.107	4.237	4.210	3.776	4.197	70- 80	7.705	1049	99.9,99.9
90	0.0345	0.0271	0.0320	0.0256	0.0479	0.0405	0.0397	0.0360	80- 90	1.260	1050	100,100
100									90-100			
110									100-110			
120									110-120			
130									120-130			
140									130-140			
150									140-150			
160									150-160			
170									160-170			
180									170-180			
DEG	LUMINOUS INTENSITY:cd									UNIT:lm		

C Range: 0 - 360DEG
 C Interval: 22.5DEG
 Test Speed: HIGH
 Temperature:25.3DEG
 Operators:
 Test Date:2021-09-28

□ Range: 0 - 90DEG
 □ Interval: 1.0DEG
 Test System:EVERFINE GO-SPEX500_V1 SYSTEM V2.00.421
 Humidity:65.0%
 Test Distance:3.080m [K=1.0000]
 Remarks:

LUMINANCE LIMITATION CURVES

Test:U:119.96V I:0.1095A P:12.937W PF:0.9461 Freq:59.98Hz Lamp Flux:1050.2x1 lm		
NAME: ASD-CD-TR-4D15AC-WH	TYPE:	WEIGHT:
SPEC.:4000K 90	DIM.:	SERIAL No.:
MFR.: ASD Lighting Corp	SUR.:	Shielding Angle:



LUMINANCE cd/(m2)		
G (DEG)	C0/180	C90/270
85	65	27
80	218	143
75	272	215
70	307	263
65	437	382
60	527	521
55	614	602
50	707	723
45	799	842

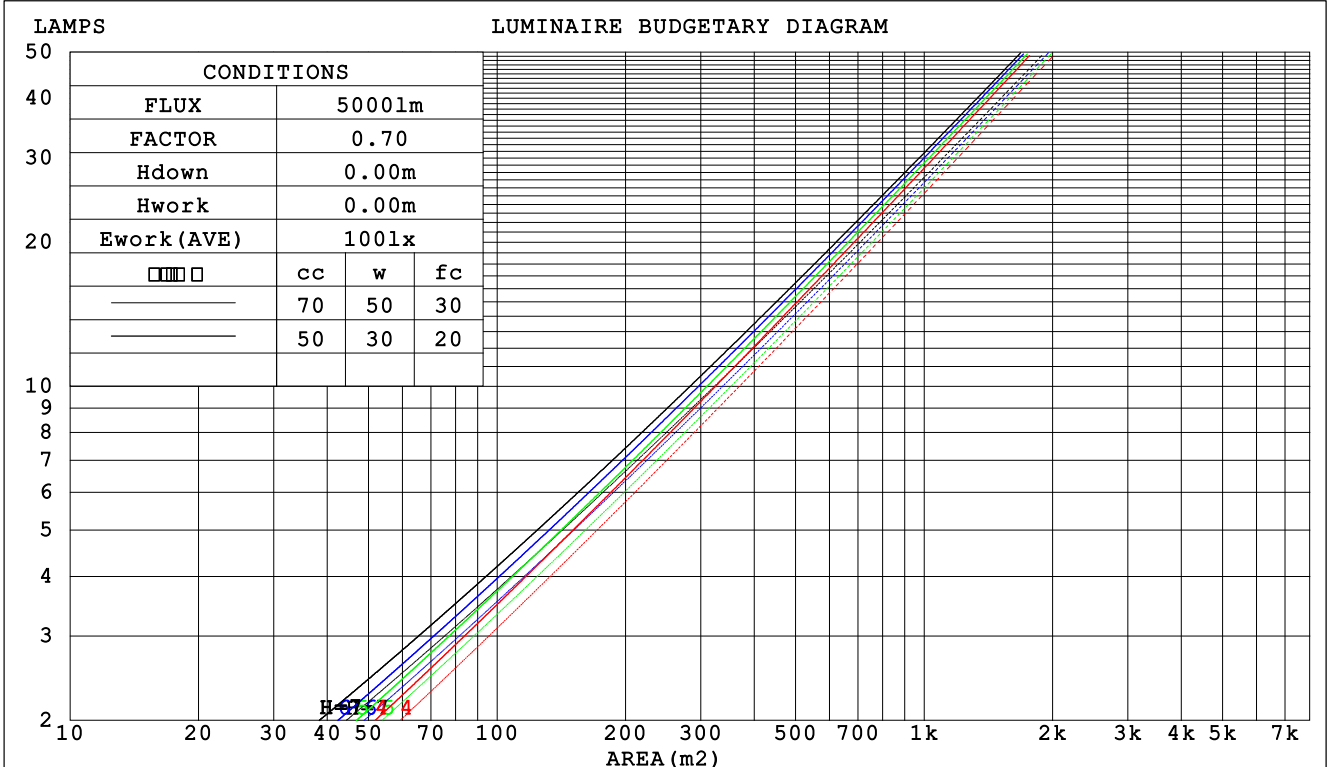
C Range: 0 - 360DEG
 C Interval: 22.5DEG
 Test Speed: HIGH
 Temperature:25.3DEG
 Operators:
 Test Date:2021-09-28

Range: 0 - 90DEG
 Interval: 1.0DEG
 Test System:EVERFINE GO-SPEX500_V1 SYSTEM V2.00.421
 Humidity:65.0%
 Test Distance:3.080m [K=1.0000]
 Remarks:

CU AND LUMINAIRE BUDGETARY ESTIMATE DIAGRAM

Test:U:119.96V I:0.1095A P:12.937W PF:0.9461 Freq:59.98Hz Lamp Flux:1050.2x1 lm		
NAME: ASD-CD-TR-4D15AC-WH	TYPE:	WEIGHT:
SPEC.:4000K 90	DIM.:	SERIAL No.:
MFR.: ASD Lighting Corp	SUR.:	Shielding Angle:

□cc	80%			70%			50%			30%			10%			0
□w	50%	30%	10%	50%	30%	10%	50%	30%	10%	50%	30%	10%	50%	30%	10%	0
□fc	20%			20%			20%			20%			20%			0
RCR	RCR:Room Cavity Ratio						Coefficients of Utilization(CU)									
0.0	1.19	1.19	1.19	1.16	1.16	1.16	1.11	1.11	1.11	1.06	1.06	1.06	1.02	1.02	1.02	1.00
1.0	1.11	1.08	1.06	1.09	1.06	1.04	1.05	1.03	1.01	1.01	.99	.98	.97	.96	.95	.93
2.0	1.03	.99	.96	1.01	.98	.95	.98	.95	.93	.95	.93	.91	.92	.91	.89	.87
3.0	.96	.92	.88	.95	.91	.87	.92	.89	.86	.90	.87	.84	.88	.85	.83	.81
4.0	.91	.85	.81	.89	.84	.81	.87	.83	.80	.85	.82	.79	.83	.80	.78	.76
5.0	.85	.80	.76	.84	.79	.75	.83	.78	.75	.81	.77	.74	.79	.76	.73	.72
6.0	.81	.75	.71	.80	.74	.71	.78	.74	.70	.77	.73	.70	.76	.72	.69	.68
7.0	.76	.71	.67	.76	.70	.66	.74	.70	.66	.73	.69	.66	.72	.68	.65	.64
8.0	.73	.67	.63	.72	.67	.63	.71	.66	.63	.70	.66	.62	.69	.65	.62	.61
9.0	.69	.64	.60	.69	.63	.60	.68	.63	.59	.67	.62	.59	.66	.62	.59	.58
10.0	.66	.60	.57	.66	.60	.57	.65	.60	.57	.64	.60	.56	.63	.59	.56	.55



C Range: 0 - 360DEG
 C Interval: 22.5DEG
 Test Speed: HIGH
 Temperature:25.3DEG
 Operators:
 Test Date:2021-09-28

□ Range: 0 - 90DEG
 □ Interval: 1.0DEG
 Test System:EVERFINE GO-SPEX500_V1 SYSTEM V2.00.421
 Humidity:65.0%
 Test Distance:3.080m [K=1.0000]
 Remarks:

WEC AND CCEC

Test:U:119.96V I:0.1095A P:12.937W PF:0.9461 Freq:59.98Hz Lamp Flux:1050.2x1 lm		
NAME: ASD-CD-TR-4D15AC-WH	TYPE:	WEIGHT:
SPEC.:4000K 90	DIM.:	SERIAL No.:
MFR.: ASD Lighting Corp	SUR.:	Shielding Angle:

<input type="checkbox"/> cc	80%	70%	50%	30%	10%	0
<input type="checkbox"/> w	50% 30% 10%	50% 30% 10%	50% 30% 10%	50% 30% 10%	50% 30% 10%	0
<input type="checkbox"/> fc	20%	20%	20%	20%	20%	0
RCR	RCR:Room Cavity Ratio		Wall Exitance Coefficients (WEC)			
0.0						
1.0	.178 .101 .032	.172 .098 .031	.159 .091 .029	.147 .085 .027	.137 .079 .026	
2.0	.170 .093 .029	.164 .090 .028	.153 .085 .026	.144 .081 .025	.135 .076 .024	
3.0	.160 .085 .026	.155 .083 .025	.146 .079 .024	.138 .076 .023	.130 .072 .022	
4.0	.151 .079 .023	.147 .077 .023	.139 .074 .022	.132 .071 .021	.126 .068 .021	
5.0	.143 .073 .021	.140 .072 .021	.133 .069 .020	.127 .067 .020	.121 .065 .019	
6.0	.136 .068 .019	.133 .067 .019	.127 .065 .019	.121 .063 .019	.116 .061 .018	
7.0	.129 .064 .018	.126 .063 .018	.121 .061 .018	.116 .060 .017	.112 .058 .017	
8.0	.123 .060 .017	.121 .059 .017	.116 .058 .017	.112 .057 .016	.107 .055 .016	
9.0	.117 .057 .016	.115 .056 .016	.111 .055 .016	.107 .054 .015	.104 .053 .015	
10.0	.112 .054 .015	.110 .053 .015	.107 .052 .015	.103 .051 .015	.100 .050 .014	

<input type="checkbox"/> cc	80%	70%	50%	30%	10%	0
<input type="checkbox"/> w	50% 30% 10%	50% 30% 10%	50% 30% 10%	50% 30% 10%	50% 30% 10%	0
<input type="checkbox"/> fc	20%	20%	20%	20%	20%	0
RCR	RCR:Room Cavity Ratio		Ceiling Cavity Exitance Coefficients (CCEC)			
0.0	.190 .190 .190	.163 .163 .163	.111 .111 .111	.064 .064 .064	.020 .020 .020	
1.0	.171 .157 .145	.146 .135 .125	.100 .093 .086	.058 .054 .050	.018 .017 .016	
2.0	.156 .133 .113	.134 .114 .098	.092 .079 .068	.053 .046 .040	.017 .015 .013	
3.0	.143 .114 .090	.123 .098 .078	.084 .068 .055	.049 .040 .032	.016 .013 .011	
4.0	.133 .099 .073	.114 .085 .063	.078 .059 .045	.045 .035 .026	.015 .011 .009	
5.0	.124 .087 .060	.106 .075 .052	.073 .053 .037	.042 .031 .022	.014 .010 .007	
6.0	.116 .078 .050	.100 .067 .044	.069 .047 .031	.040 .028 .018	.013 .009 .006	
7.0	.109 .070 .043	.094 .061 .037	.065 .043 .026	.038 .025 .016	.012 .008 .005	
8.0	.103 .064 .037	.089 .055 .032	.061 .039 .023	.036 .023 .014	.012 .008 .004	
9.0	.098 .058 .032	.084 .051 .028	.058 .036 .020	.034 .021 .012	.011 .007 .004	
10.0	.093 .054 .028	.080 .047 .024	.056 .033 .017	.032 .019 .010	.011 .006 .003	

C Range: 0 - 360DEG
 C Interval: 22.5DEG
 Test Speed: HIGH
 Temperature:25.3DEG
 Operators:
 Test Date:2021-09-28

Range: 0 - 90DEG
 Interval: 1.0DEG
 Test System:EVERFINE GO-SPEX500_V1 SYSTEM V2.00.421
 Humidity:65.0%
 Test Distance:3.080m [K=1.0000]
 Remarks:

UGR(Unified Glare Rating) Table

Test:U:119.96V I:0.1095A P:12.937W PF:0.9461 Freq:59.98Hz Lamp Flux:1050.2x1 lm										
NAME: ASD-CD-TR-4D15AC-WH					TYPE:			WEIGHT:		
SPEC.:4000K 90					DIM.:			SERIAL No.:		
MFR.: ASD Lighting Corp					SUR.:			Shielding Angle:		
ceiling/cavity	0.7	0.7	0.5	0.5	0.3	0.7	0.7	0.5	0.5	0.3
walls	0.5	0.3	0.5	0.3	0.3	0.5	0.3	0.5	0.3	0.3
working plane	0.2	0.2	0.2	0.2	0.2	0.2	0.2	0.2	0.2	0.2
Room dimensions	Viewed crosswise					Viewed endwise				
x = 2H y = 2H	6.9	7.8	7.1	8.0	8.1	6.8	7.7	7.0	7.9	8.0
3H	7.3	8.1	7.5	8.3	8.5	7.1	7.9	7.3	8.1	8.3
4H	7.4	8.2	7.7	8.4	8.6	7.1	7.9	7.4	8.2	8.4
6H	7.5	8.2	7.7	8.4	8.7	7.1	7.9	7.4	8.1	8.4
8H	7.4	8.2	7.7	8.4	8.7	7.1	7.8	7.4	8.1	8.4
12H	7.4	8.1	7.7	8.4	8.6	7.1	7.8	7.4	8.0	8.3
4H 2H	7.0	7.8	7.3	8.0	8.3	6.9	7.7	7.2	8.0	8.2
3H	7.5	8.2	7.8	8.4	8.7	7.3	8.0	7.6	8.3	8.5
4H	7.7	8.3	8.0	8.6	8.9	7.4	8.0	7.8	8.3	8.7
6H	7.8	8.3	8.2	8.7	9.0	7.4	8.0	7.8	8.3	8.7
8H	7.8	8.3	8.2	8.7	9.0	7.4	7.9	7.8	8.3	8.7
12H	7.7	8.2	8.2	8.6	9.0	7.4	7.9	7.8	8.2	8.6
8H 4H	7.6	8.2	8.0	8.5	8.9	7.4	7.9	7.8	8.3	8.6
6H	7.8	8.2	8.2	8.6	9.0	7.5	7.9	7.9	8.3	8.7
8H	7.8	8.2	8.3	8.6	9.1	7.4	7.8	7.9	8.2	8.7
12H	7.8	8.1	8.3	8.6	9.0	7.4	7.7	7.9	8.2	8.6
12H 4H	7.6	8.1	8.0	8.4	8.8	7.4	7.8	7.8	8.2	8.6
6H	7.8	8.1	8.2	8.6	9.0	7.4	7.8	7.9	8.2	8.7
8H	7.8	8.1	8.3	8.6	9.0	7.4	7.7	7.9	8.2	8.7
Variations with the observer position at spacings:										
S = 1.0H	+ 1.2 / - 1.1					+ 1.0 / - 1.2				
1.5H	+ 2.0 / - 0.7					+ 1.5 / - 0.7				
2.0H	+ 0.9 / - 0.9					+ 1.2 / - 1.2				

CIE Pub.117, 1050 lm Total Lamp Luminous Flux Correct (8log(F/F0) = 0.2)
 Area: 0.111111 m2

C Range: 0 - 360DEG
 C Interval: 22.5DEG
 Test Speed: HIGH
 Temperature:25.3DEG
 Operators:
 Test Date:2021-09-28

Range: 0 - 90DEG
 Interval: 1.0DEG
 Test System:EVERFINE GO-SPEX500_V1 SYSTEM V2.00.421
 Humidity:65.0%
 Test Distance:3.080m [K=1.0000]
 Remarks:

UTILIZATION FACTORS TABLE

Test:U:119.96V I:0.1095A P:12.937W PF:0.9461 Freq:59.98Hz Lamp Flux:1050.2x1 lm		
NAME: ASD-CD-TR-4D15AC-WH	TYPE:	WEIGHT:
SPEC.:4000K 90	DIM.:	SERIAL No.:
MFR.: ASD Lighting Corp	SUR.:	Shielding Angle:

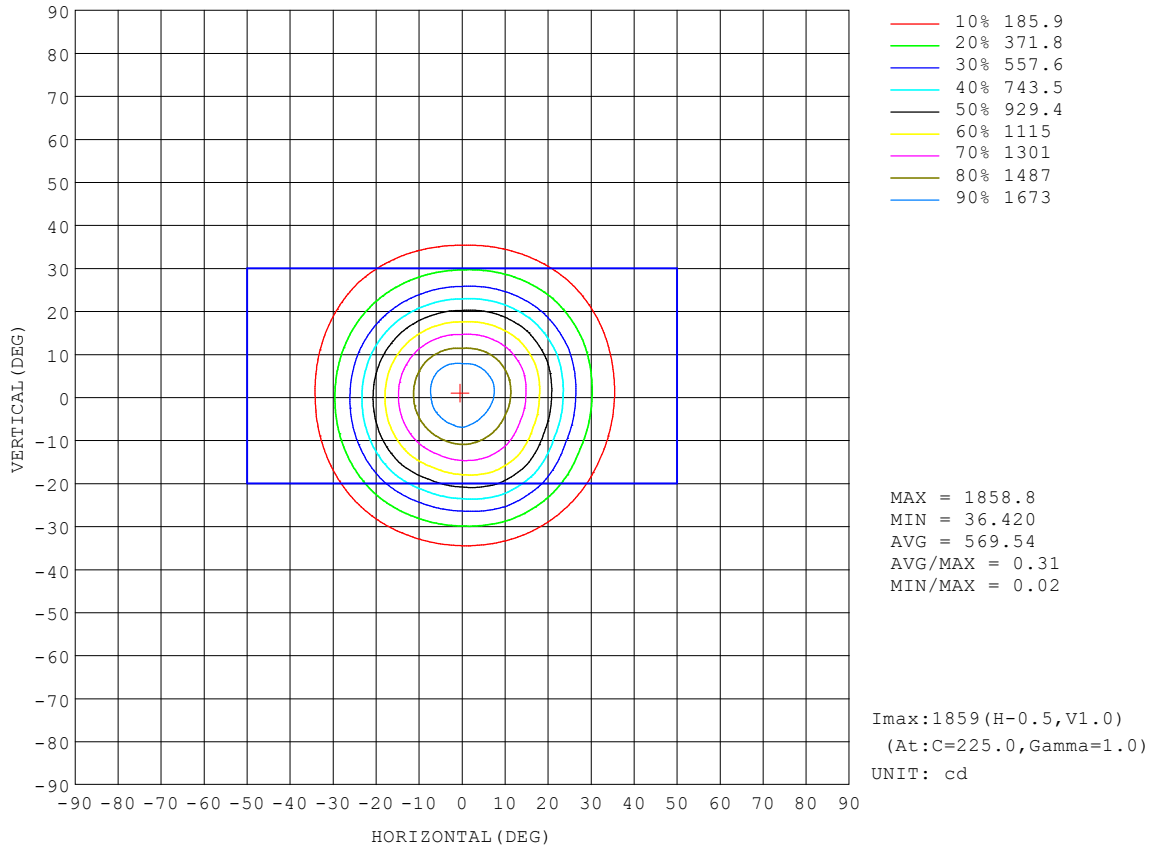
REFLECTANCE										
Ceiling	0.8	0.8	0.8	0.7	0.7	0.7	0.5	0.5	0.5	0
Walls	0.7	0.5	0.3	0.7	0.5	0.3	0.7	0.5	0.3	0
Working plane	0.2	0.2	0.2	0.2	0.2	0.2	0.2	0.2	0.2	0
ROOM INDEX	UTILIZATION FACTORS (PERCENT) $k(RI) \times RCR = 5$									
k = 0.60	85	78	74	84	78	74	83	77	74	70
0.80	92	86	82	92	86	82	90	85	82	78
1.00	97	91	87	96	91	87	95	91	86	82
1.25	101	96	92	100	95	92	98	94	91	86
1.50	104	99	96	103	98	95	101	97	94	89
2.00	107	103	99	106	102	99	103	100	97	92
2.50	109	105	102	108	104	101	105	102	99	93
3.00	111	107	104	109	106	103	106	103	101	95
4.00	113	110	108	111	109	106	107	105	104	97
5.00	115	112	110	112	110	109	108	107	105	98
ROOM INDEX	UF(total)									Direct
According to DIN EN 13032-2 2004			Suspended				SHRNOM = 1.25			

C Range: 0 - 360DEG
 C Interval: 22.5DEG
 Test Speed: HIGH
 Temperature:25.3DEG
 Operators:
 Test Date:2021-09-28

Range: 0 - 90DEG
 Interval: 1.0DEG
 Test System:EVERFINE GO-SPEX500_V1 SYSTEM V2.00.421
 Humidity:65.0%
 Test Distance:3.080m [K=1.0000]
 Remarks:

ISOCANDELA DIAGRAM

Test:U:119.96V I:0.1095A P:12.937W PF:0.9461 Freq:59.98Hz Lamp Flux:1050.2x1 lm		
NAME: ASD-CD-TR-4D15AC-WH	TYPE:	WEIGHT:
SPEC.:4000K 90	DIM.:	SERIAL No.:
MFR.: ASD Lighting Corp	SUR.:	Shielding Angle:

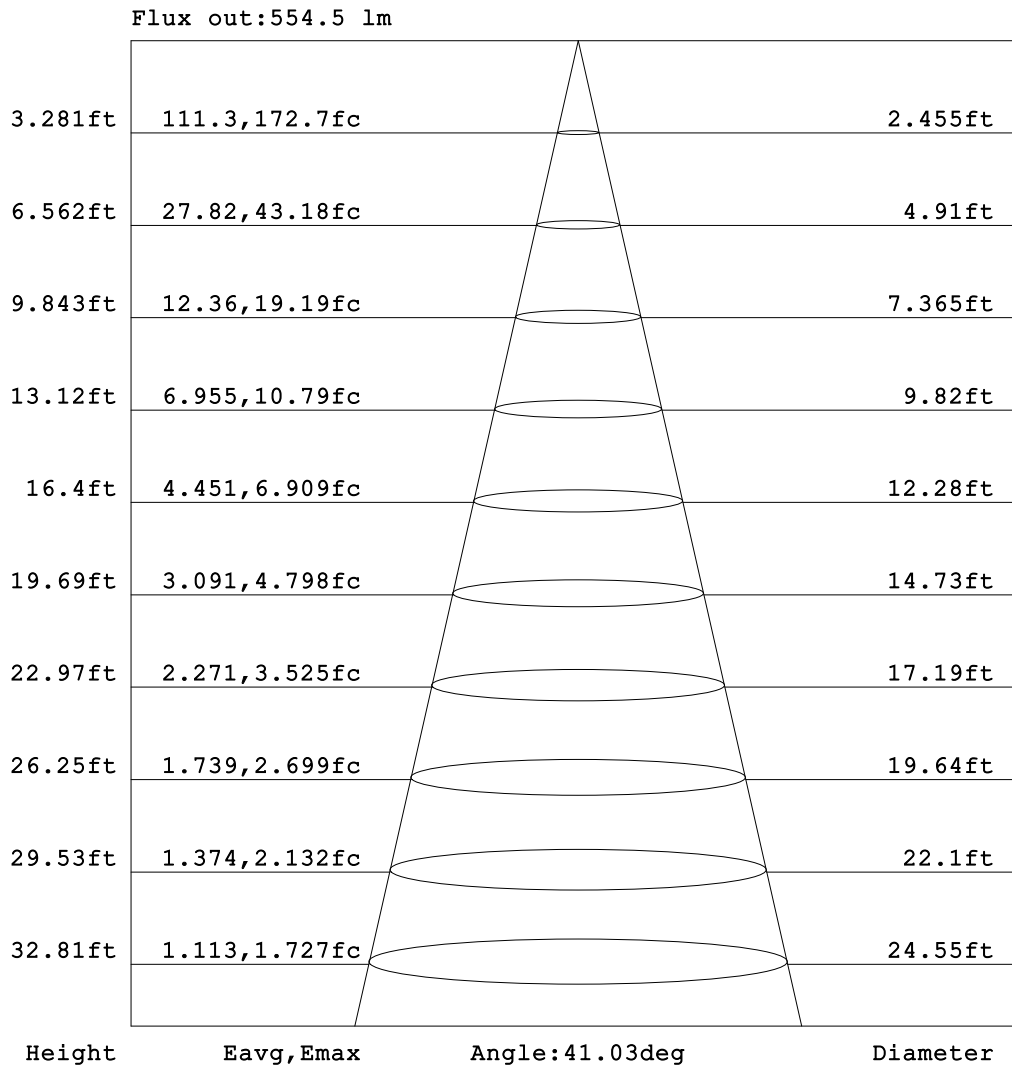


C Range: 0 - 360DEG
 C Interval: 22.5DEG
 Test Speed: HIGH
 Temperature:25.3DEG
 Operators:
 Test Date:2021-09-28

Range: 0 - 90DEG
 Interval: 1.0DEG
 Test System:EVERFINE GO-SPEX500_V1 SYSTEM V2.00.421
 Humidity:65.0%
 Test Distance:3.080m [K=1.0000]
 Remarks:

AAI Figure

Test:U:119.96V I:0.1095A P:12.937W PF:0.9461 Freq:59.98Hz Lamp Flux:1050.2x1 lm		
NAME: ASD-CD-TR-4D15AC-WH	TYPE:	WEIGHT:
SPEC.:4000K 90	DIM.:	SERIAL No.:
MFR.: ASD Lighting Corp	SUR.:	Shielding Angle:



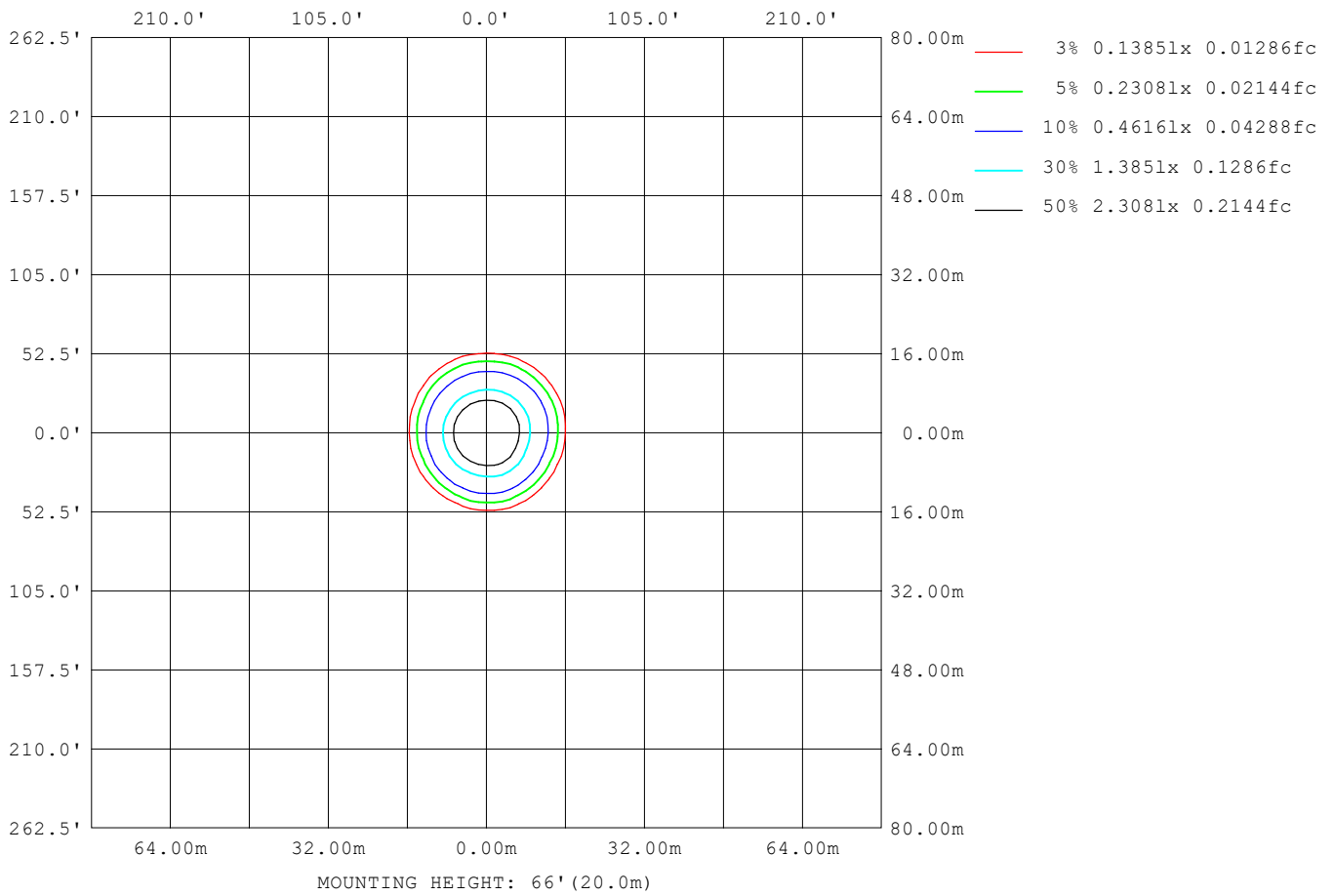
Note:The Curves indicate the illuminated area and the average illumination when the luminaire is at different distance.

C Range: 0 - 360DEG
 C Interval: 22.5DEG
 Test Speed: HIGH
 Temperature:25.3DEG
 Operators:
 Test Date:2021-09-28

Range: 0 - 90DEG
 Interval: 1.0DEG
 Test System:EVERFINE GO-SPEX500_V1 SYSTEM V2.00.421
 Humidity:65.0%
 Test Distance:3.080m [K=1.0000]
 Remarks:

ISOLUX DIAGRAM

Test:U:119.96V I:0.1095A P:12.937W PF:0.9461 Freq:59.98Hz Lamp Flux:1050.2x1 lm		
NAME: ASD-CD-TR-4D15AC-WH	TYPE:	WEIGHT:
SPEC.:4000K 90	DIM.:	SERIAL No.:
MFR.: ASD Lighting Corp	SUR.:	Shielding Angle:



C Range: 0 - 360DEG
 C Interval: 22.5DEG
 Test Speed: HIGH
 Temperature:25.3DEG
 Operators:
 Test Date:2021-09-28

Range: 0 - 90DEG
 Interval: 1.0DEG
 Test System:EVERFINE GO-SPEX500_V1 SYSTEM V2.00.421
 Humidity:65.0%
 Test Distance:3.080m [K=1.0000]
 Remarks:

LED Avg.L Report

Test:U:119.96V I:0.1095A P:12.937W PF:0.9461 Freq:59.98Hz Lamp Flux:1050.2x1 lm		
NAME: ASD-CD-TR-4D15AC-WH	TYPE:	WEIGHT:
SPEC.:4000K 90	DIM.:	SERIAL No.:
MFR.: ASD Lighting Corp	SUR.:	Shielding Angle:

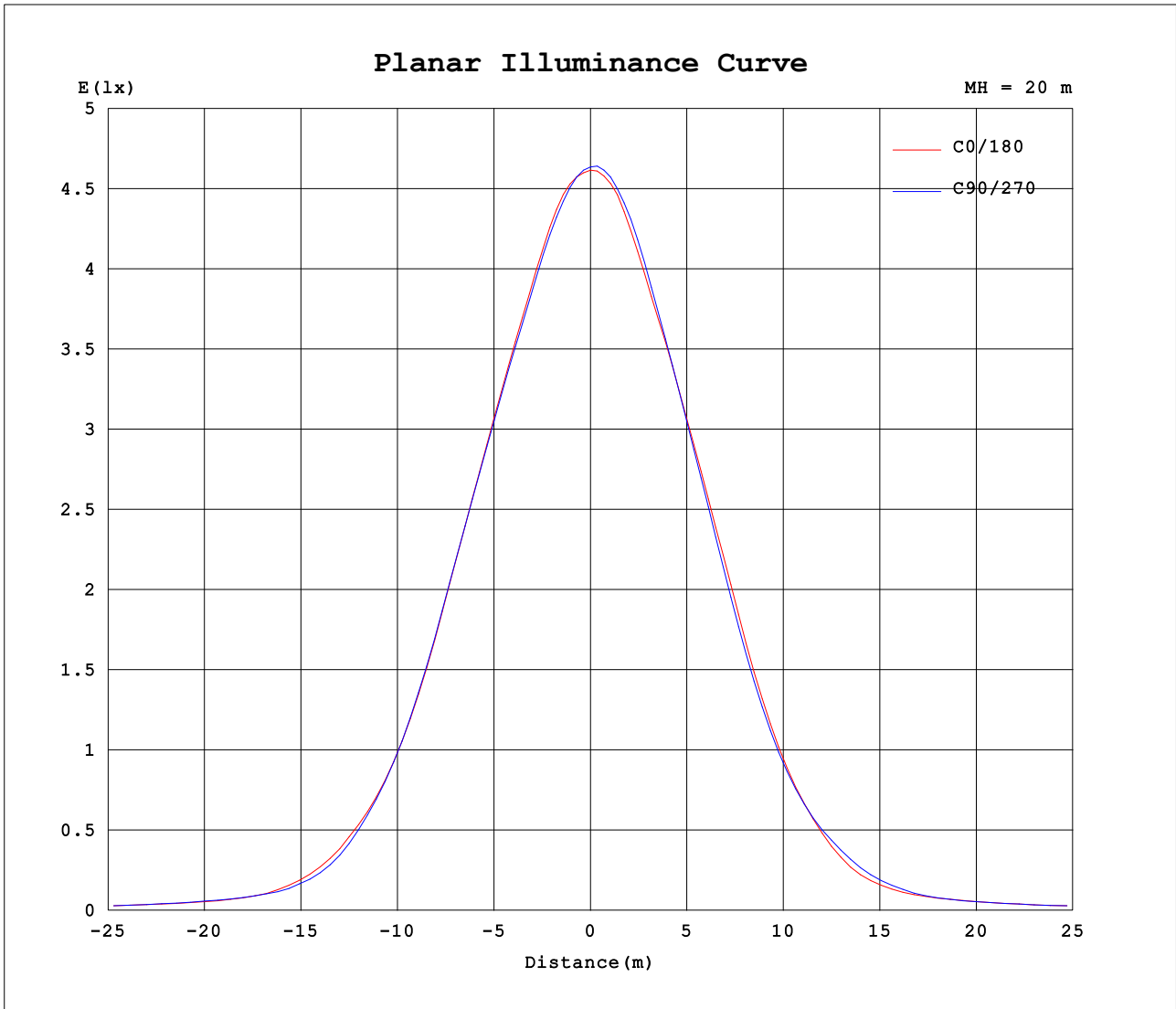
AvgL	cd/m2
L_0~180 (65) av	425
L_0~180 (75) av	271
L_0~180 (85) av	72
L_90~270 (65) av	404
L_90~270 (75) av	239
L_90~270 (85) av	55
L_45 (65) av	418
L_45 (75) av	254
L_45 (85) av	81

Standard: GB/T 29293-2012

C Range: 0 - 360DEG
 C Interval: 22.5DEG
 Test Speed: HIGH
 Temperature:25.3DEG
 Operators:
 Test Date:2021-09-28

Range: 0 - 90DEG
 Interval: 1.0DEG
 Test System:EVERFINE GO-SPEX500_V1 SYSTEM V2.00.421
 Humidity:65.0%
 Test Distance:3.080m [K=1.0000]
 Remarks:

Planar Illuminance Curve



C Range: 0 - 360DEG
 C Interval: 22.5DEG
 Test Speed: HIGH
 Temperature: 25.3DEG
 Operators:
 Test Date: 2021-09-28

Range: 0 - 90DEG
 Interval: 1.0DEG
 Test System: EVERFINE GO-SPEX500_V1 SYSTEM V2.00.421
 Humidity: 65.0%
 Test Distance: 3.080m [K=1.0000]
 Remarks:

LUMINOUS DISTRIBUTION INTENSITY DATA

Test:U:119.96V I:0.1095A P:12.937W PF:0.9461 Freq:59.98Hz Lamp Flux:1050.2x1 lm		
NAME: ASD-CD-TR-4D15AC-WH	TYPE:	WEIGHT:
SPEC.:4000K 90	DIM.:	SERIAL No.:
MFR.: ASD Lighting Corp	SUR.:	Shielding Angle:

Table--1

UNIT: cd

C (DEG) □ (DEG)	0	22.5	45	67.5	90	112.5	135	157.5	180	202.5	225	247.5	270	292.5	315	337.5			
0	1853	1853	1853	1853	1853	1853	1853	1853	1853	1853	1853	1853	1853	1853	1853	1853			
5	1775	1754	1740	1737	1748	1739	1743	1757	1769	1799	1810	1801	1784	1786	1789	1786			
10	1553	1531	1523	1524	1531	1521	1523	1532	1549	1571	1584	1579	1559	1578	1580	1570			
15	1295	1285	1306	1302	1283	1264	1279	1282	1295	1305	1305	1290	1275	1303	1326	1321			
20	988	981	1038	1037	986	960	988	984	983	984	970	948	941	986	1026	1023			
25	645	630	694	699	646	629	650	636	628	627	616	602	603	640	678	681			
30	382	363	388	394	367	359	362	354	353	357	356	353	355	379	403	405			
35	199	179	177	176	171	163	161	158	163	180	194	196	194	206	217	210			
40	94.8	89.5	93.5	95.4	92.4	89.7	90.0	88.9	88.2	92.3	98.2	99.5	96.7	101	106	104			
45	63.0	62.9	65.1	65.9	66.1	64.9	63.9	62.9	63.7	63.7	63.1	62.3	62.5	63.4	63.9	62.9			
50	50.6	50.6	51.1	51.1	51.6	50.6	49.6	48.7	49.3	49.8	49.4	48.5	49.3	50.1	50.3	49.8			
55	39.3	38.1	37.1	36.9	38.3	37.1	36.3	36.3	37.9	39.2	39.4	38.8	39.5	40.2	40.3	39.3			
60	29.4	28.8	28.0	27.9	28.9	28.1	27.4	27.4	28.6	29.8	29.8	29.2	29.6	30.2	30.3	29.5			
65	20.6	19.3	18.0	17.4	17.9	17.4	17.5	18.0	19.3	21.0	21.1	20.0	20.0	21.0	21.9	21.0			
70	11.7	10.8	10.5	9.94	9.98	9.87	10.3	10.5	11.2	12.1	12.3	11.4	11.4	11.6	12.4	12.3			
75	7.85	7.28	6.68	6.21	6.17	6.17	6.52	7.10	7.76	8.10	7.99	7.63	7.56	7.81	8.09	8.07			
80	4.22	3.70	3.13	2.76	2.76	2.80	3.11	3.62	4.24	4.37	4.21	3.86	3.78	3.94	4.20	4.23			
85	0.63	0.85	0.42	0.23	0.26	0.29	0.50	0.90	0.76	1.36	1.14	0.89	0.81	0.88	1.07	1.20			
90	0.03	0.03	0.03	0.03	0.03	0.02	0.03	0.03	0.05	0.05	0.04	0.04	0.04	0.04	0.04	0.04			

C Range: 0 - 360DEG
 C Interval: 22.5DEG
 Test Speed: HIGH
 Temperature:25.3DEG
 Operators:
 Test Date:2021-09-28

□ Range: 0 - 90DEG
 □ Interval: 1.0DEG
 Test System:EVERFINE GO-SPEX500_V1 SYSTEM V2.00.421
 Humidity:65.0%
 Test Distance:3.080m [K=1.0000]
 Remarks: