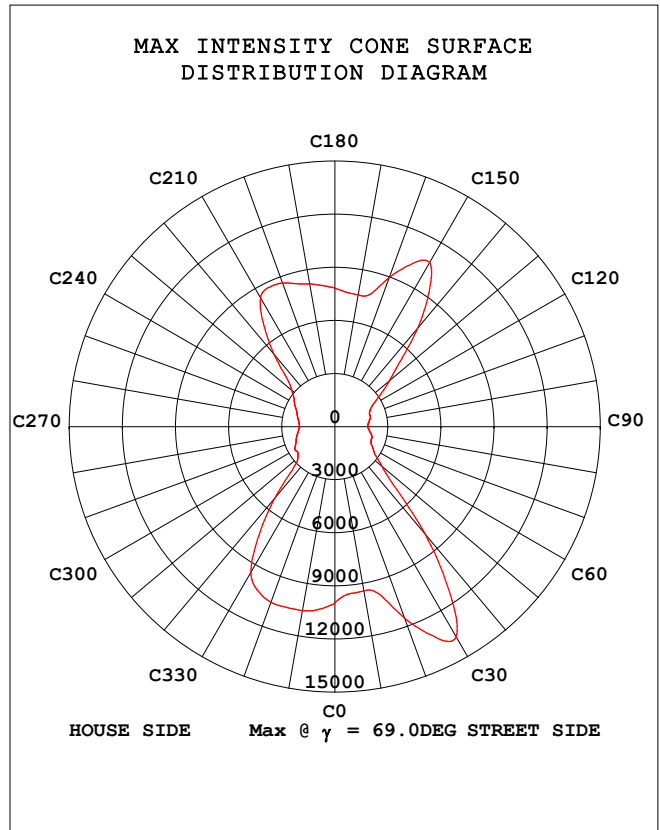
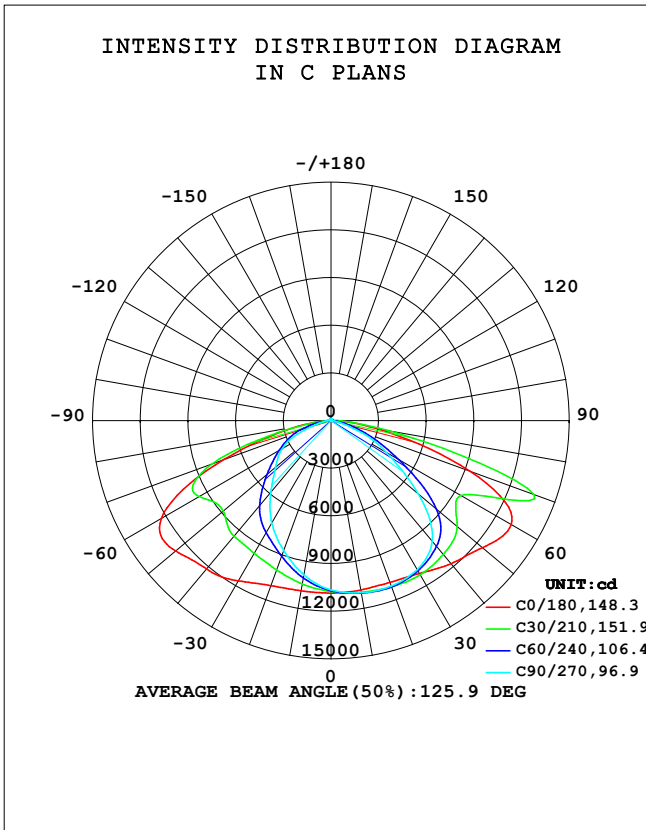


STREETLIGHT PHOTOMETRIC TEST REPORT

Test:U:277.39V I:0.8631A P:238.82W PF:0.9976 Freq:50.02Hz Lamp Flux:40223.9x1 lm		
NAME: ASD-LSB5BHV-PRO-240BR	TYPE:	WEIGHT:
SPEC.: 240W 5000K	DIM.:	SERIAL No.:
MFR.: ASD LIGHTING CORP	SUR.:	Shielding Angle:

DATA OF LAMP		PHOTOMETRIC DATA Eff: 168.42 lm/W			
MODEL	ASD-LSB5BHV-PRO-240BR	I _{max} (cd)	13723	η street_up (%)	0.4
NOMINAL POWER (W)	240	LOR (%)	100.0	η street_down (%)	53.6
RATED VOLTAGE (V)	277	TOTAL FLUX (lm)	40224	η house_up (%)	0.6
NOMINAL FLUX (lm)	40223.9	MAXIMUM @ (C, γ)	30,69.0	η house_down (%)	45.4
LAMPS INSIDE	1	η up (%)	1.0	76 FLASHAREA (m2)	
TEST VOLTAGE (V)	277	η down (%)	99.0	SLI	

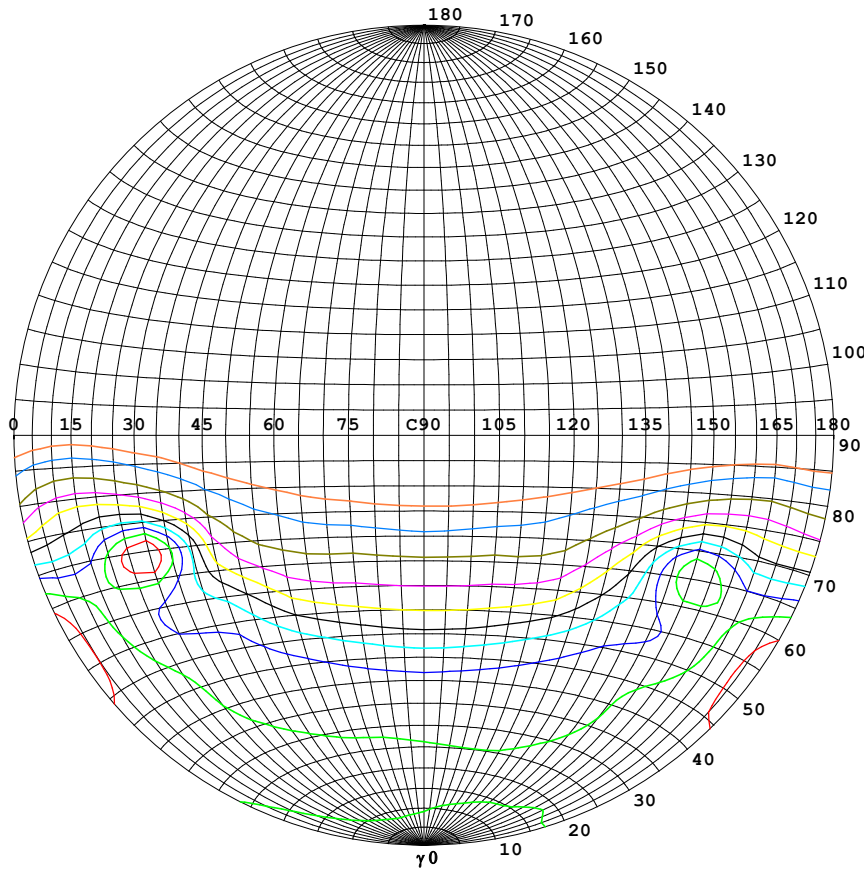


C Range: 0 - 360DEG
 C Interval: 5.0DEG
 Test Speed: HIGH
 Temperature:25.3DEG
 Operators:S
 Test Date:2024-5-30

γ Range: 0 - 180DEG
 γ Interval: 1.0DEG
 Test System:EVERFINE GO-2000B_V1 SYSTEM V2.00.446
 Humidity:65.0%
 Test Distance:7.850m [K=1.0000]
 Remarks:

STREETLIGHT ISOCANDELA DIAGRAM

Test:U:277.39V I:0.8631A P:238.82W PF:0.9976 Freq:50.02Hz Lamp Flux:40223.9x1 lm		
NAME: ASD-LSB5BHV-PRO-240BR	TYPE:	WEIGHT:
SPEC.: 240W 5000K	DIM.:	SERIAL No.:
MFR.: ASD LIGHTING CORP	SUR.:	Shielding Angle:



Classification:

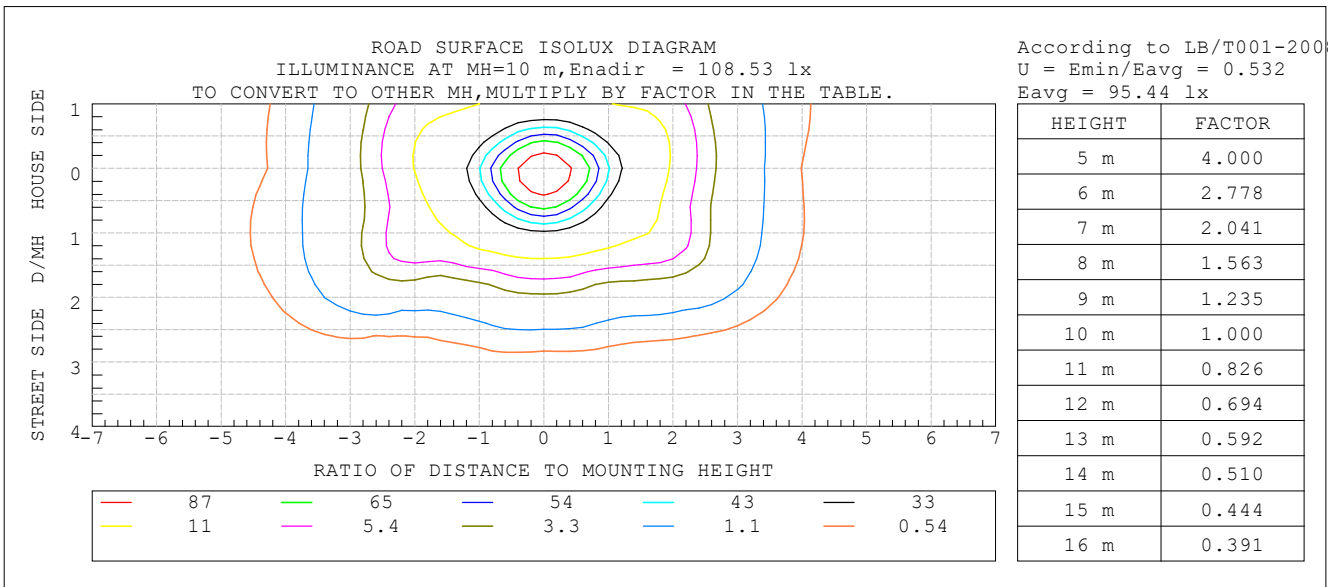
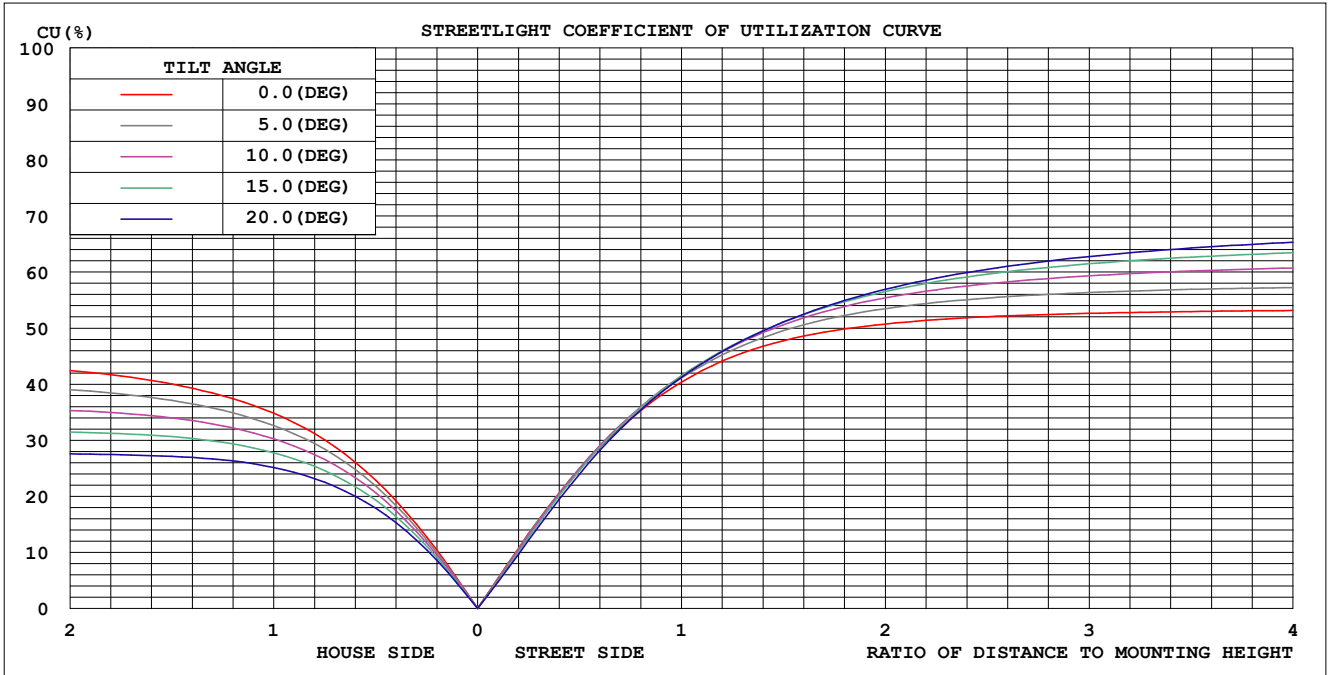
IES:Type III - Medium
 CIE:Broad - Intermediate
 IES:Semi cut-off
 CIE:Non-cut-off
 Max.At80:116.0cd/klm
 Max.At90:8.605cd/klm
 Max.80-90:116.0cd/klm
 NRB 5101:Limited[9.9%]

ISOCANDELA DIAGRAM	
UNIT	cd
I _{max} =100%	13723
90%	12350
80%	10978
70%	9606
60%	8234
50%	6861
40%	5489
30%	4117
20%	2745
10%	1372
5%	686

C Range: 0 - 360DEG
 C Interval: 5.0DEG
 Test Speed: HIGH
 Temperature:25.3DEG
 Operators:S
 Test Date:2024-5-30

γ Range: 0 - 180DEG
 γ Interval: 1.0DEG
 Test System:EVERFINE GO-2000B_V1 SYSTEM V2.00.446
 Humidity:65.0%
 Test Distance:7.850m [K=1.0000]
 Remarks:

**COEFFICIENT OF UTILIZATION CURVE
AND ISOLUX DIAGRAM**



C Range: 0 - 360DEG
 C Interval: 5.0DEG
 Test Speed: HIGH
 Temperature: 25.3DEG
 Operators: S
 Test Date: 2024-5-30

γ Range: 0 - 180DEG
 γ Interval: 1.0DEG
 Test System: EVERFINE GO-2000B_V1 SYSTEM V2.00.446
 Humidity: 65.0%
 Test Distance: 7.850m [K=1.0000]
 Remarks:

ZONAL FLUX DIAGRAM

Test:U:277.39V I:0.8631A P:238.82W PF:0.9976 Freq:50.02Hz Lamp Flux:40223.9x1 lm		
NAME: ASD-LSB5BHV-PRO-240BR	TYPE:	WEIGHT:
SPEC.: 240W 5000K	DIM.:	SERIAL No.:
MFR.: ASD LIGHTING CORP	SUR.:	Shielding Angle:

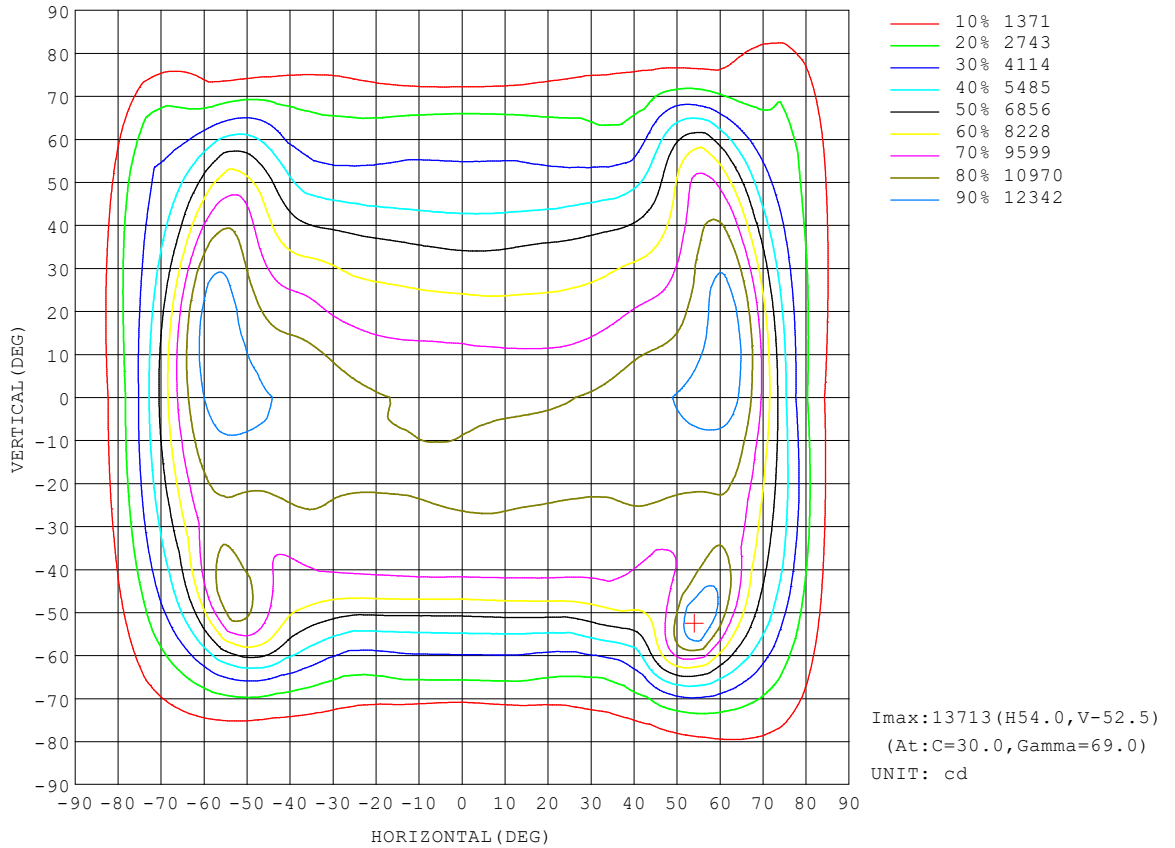
γ	C0	C45	C90	C135	C180	C225	C270	C315	γ	Φ zone	Φ total	lum, lamp
10	1083	1100	1100	1088	1088	1022	986.7	1005	0- 10	1014	1014	2.52,2.52
20	1084	1116	1108	1109	1106	947.7	871.3	925.3	10- 20	2956	3970	9.87,9.87
30	1112	1106	1084	1096	1165	873.1	745.2	844.3	20- 30	4699	8669	21.6,21.6
40	1176	1059	991.3	1052	1219	803.0	590.0	771.1	30- 40	6153	14822	36.8,36.8
50	1245	991.0	715.6	965.3	1277	671.5	456.0	653.0	40- 50	7030	21853	54.3,54.3
60	1310	791.3	406.7	787.0	1234	504.2	355.2	473.3	50- 60	7077	28929	71.9,71.9
70	932.0	448.5	159.0	478.2	716.4	364.0	179.6	320.9	60- 70	6499	35429	88.1,88.1
80	287.6	139.1	34.86	108.6	207.5	109.8	58.53	137.8	70- 80	3609	39037	97.1,97.1
90	11.44	2.164	0.8463	2.006	4.415	4.081	1.718	4.286	80- 90	789.3	39827	99,99
100	5.055	2.817	1.564	3.097	6.833	4.601	2.420	4.239	90-100	37.78	39865	99.1,99.1
110	7.162	4.226	2.533	4.483	8.673	6.137	3.972	5.826	100-110	48.16	39913	99.2,99.2
120	8.402	5.536	3.659	5.695	9.474	7.557	5.804	7.364	110-120	59.51	39972	99.4,99.4
130	8.676	6.612	4.823	6.146	9.448	8.193	7.428	8.656	120-130	63.99	40036	99.5,99.5
140	8.420	7.267	5.848	6.608	9.155	8.616	8.526	9.263	130-140	60.17	40096	99.7,99.7
150	8.625	7.868	6.813	7.055	9.337	9.059	8.991	9.548	140-150	51.60	40148	99.8,99.8
160	9.256	8.680	7.888	7.899	9.754	9.372	9.429	9.801	150-160	40.21	40188	99.9,99.9
170	10.05	9.492	8.954	9.055	10.25	9.705	9.709	9.916	160-170	26.43	40215	100,100
180	10.37	9.759	9.457	9.667	10.41	9.739	9.477	9.651	170-180	9.336	40224	100,100
DEG	LUMINOUS INTENSITY:X10cd									UNIT:lm		

C Range: 0 - 360DEG
 C Interval: 5.0DEG
 Test Speed: HIGH
 Temperature:25.3DEG
 Operators:S
 Test Date:2024-5-30

γ Range: 0 - 180DEG
 γ Interval: 1.0DEG
 Test System:EVERFINE GO-2000B_V1 SYSTEM V2.00.446
 Humidity:65.0%
 Test Distance:7.850m [K=1.0000]
 Remarks:

ISOCANDELA DIAGRAM

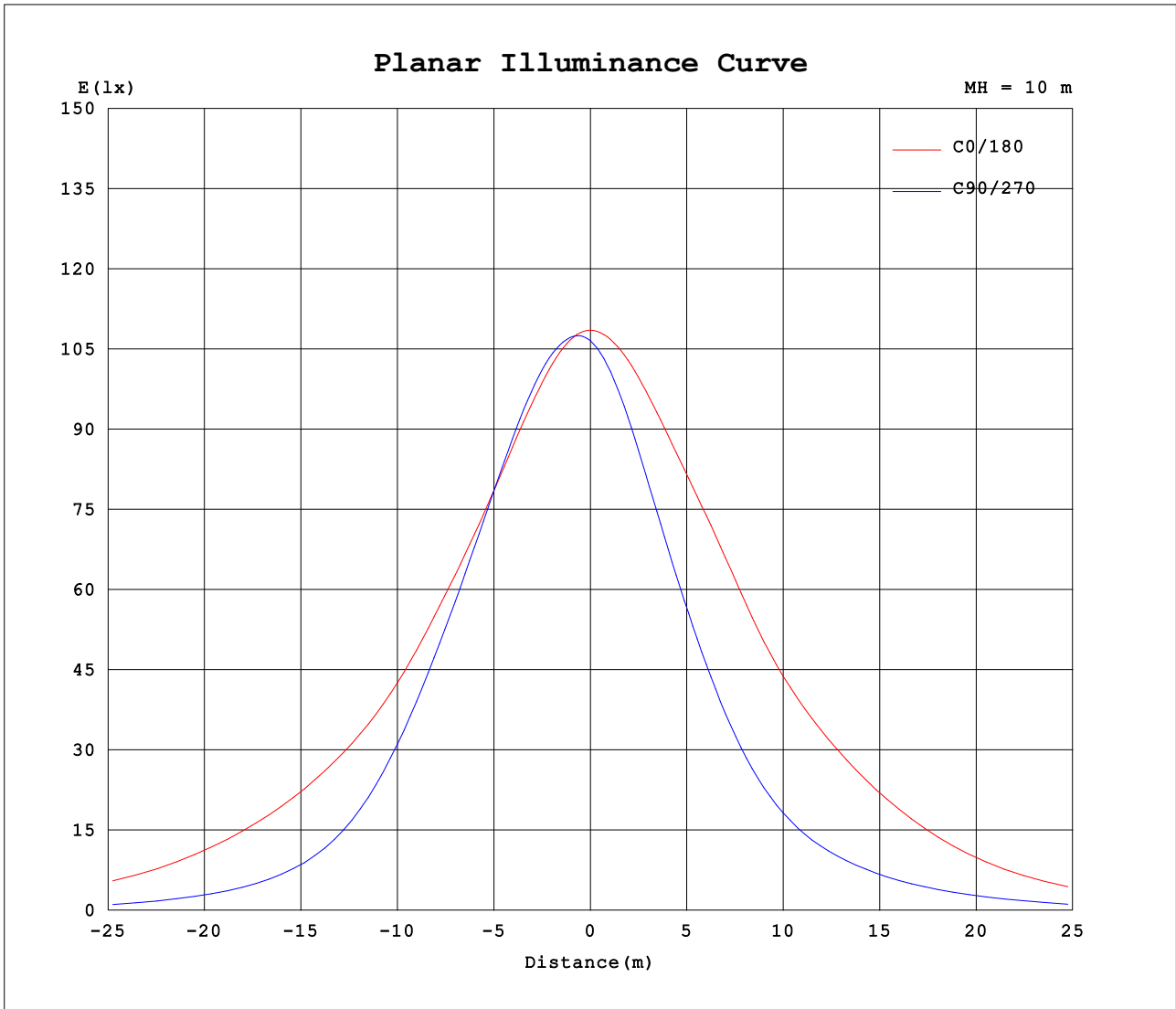
Test:U:277.39V I:0.8631A P:238.82W PF:0.9976 Freq:50.02Hz Lamp Flux:40223.9x1 lm		
NAME: ASD-LSB5BHV-PRO-240BR	TYPE:	WEIGHT:
SPEC.: 240W 5000K	DIM.:	SERIAL No.:
MFR.: ASD LIGHTING CORP	SUR.:	Shielding Angle:



C Range: 0 - 360DEG
 C Interval: 5.0DEG
 Test Speed: HIGH
 Temperature:25.3DEG
 Operators:S
 Test Date:2024-5-30

γ Range: 0 - 180DEG
 γ Interval: 1.0DEG
 Test System:EVERFINE GO-2000B_V1 SYSTEM V2.00.446
 Humidity:65.0%
 Test Distance:7.850m [K=1.0000]
 Remarks:

Planar Illuminance Curve



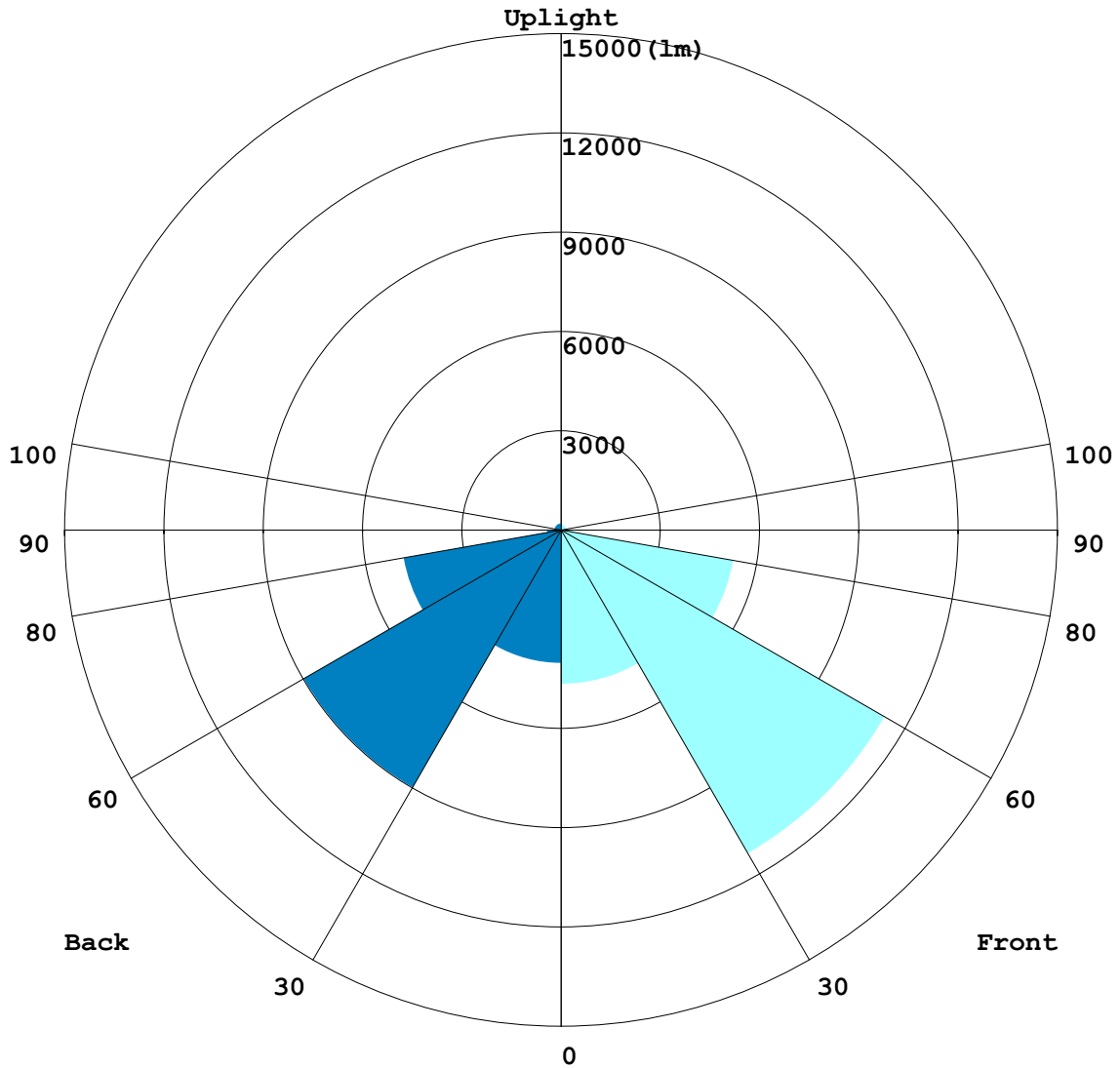
C Range: 0 - 360DEG
 C Interval: 5.0DEG
 Test Speed: HIGH
 Temperature: 25.3DEG
 Operators: S
 Test Date: 2024-5-30

γ Range: 0 - 180DEG
 γ Interval: 1.0DEG
 Test System: EVERFINE GO-2000B_V1 SYSTEM V2.00.446
 Humidity: 65.0%
 Test Distance: 7.850m [K=1.0000]
 Remarks:

LCS REPORT

Test:U:277.39V I:0.8631A P:238.82W PF:0.9976 Freq:50.02Hz		
Lamp Flux:40223.9x1 lm		
NAME: ASD-LSB5BHV-PRO-240BR	TYPE:	WEIGHT:
SPEC.: 240W 5000K	DIM.:	SERIAL No.:
MFR.: ASD LIGHTING CORP	SUR.:	Shielding Angle:

LUMINAIRE CLASSIFICATION SYSTEM(LCS) GRAPH



C Range: 0 - 360DEG
 C Interval: 5.0DEG
 Test Speed: HIGH
 Temperature:25.3DEG
 Operators:S
 Test Date:2024-5-30

γ Range: 0 - 180DEG
 γ Interval: 1.0DEG
 Test System:EVERFINE GO-2000B_V1 SYSTEM V2.00.446
 Humidity:65.0%
 Test Distance:7.850m [K=1.0000]
 Remarks:

BUG REPORT

Test:U:277.39V I:0.8631A P:238.82W PF:0.9976 Freq:50.02Hz Lamp Flux:40223.9x1 lm		
NAME: ASD-LSB5BHV-PRO-240BR	TYPE:	WEIGHT:
SPEC.: 240W 5000K	DIM.:	SERIAL No.:
MFR.: ASD LIGHTING CORP	SUR.:	Shielding Angle:

IESNA Luminaire Flux Distribution Table:

Zone	Lumens	Luminaire %
FL - Front-Low(0-30)	4649.6	11.6
FM - Front-Medium(30-60)	11279	28.0
FH - Front-High(60-80)	5278.5	13.1
FVH - Front-Very High(80-90)	368.32	0.9
Total Forward Light	21750	54.1

BL - Back-Low(0-30)	4019.2	10.0
BM - Back-Medium(30-60)	8981.2	22.3
BH - Back-High(60-80)	4829.6	12.0
BVH - Back-Very High(80-90)	420.99	1.0
Total Back Light	18474	45.9

UL - Uplight-Low(90-100)	37.781	0.1
UH - Uplight-High(100-180)	359.42	0.9
Total Up Light	397.2	1.0

BUG(Back,Up,Glare) Rating	B5-U3-G4
----------------------------------	-----------------

Zone	Downward Lumens	Upward Lumens	Total Lumens
House Side	18251	223.4	18474
Street Side	21576	173.8	21750

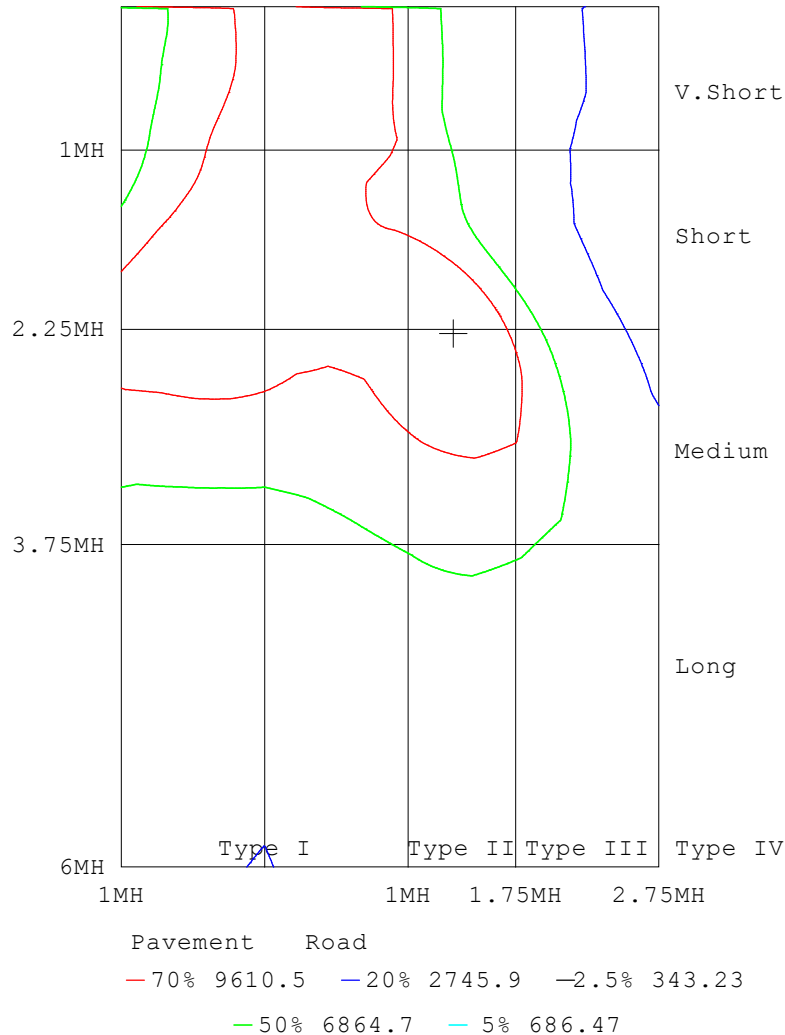
C Range: 0 - 360DEG
 C Interval: 5.0DEG
 Test Speed: HIGH
 Temperature:25.3DEG
 Operators:S
 Test Date:2024-5-30

γ Range: 0 - 180DEG
 γ Interval: 1.0DEG
 Test System:EVERFINE GO-2000B_V1 SYSTEM V2.00.446
 Humidity:65.0%
 Test Distance:7.850m [K=1.0000]
 Remarks:

ROAD ISOCANDELA REPORT

Test:U:277.39V I:0.8631A P:238.82W PF:0.9976 Freq:50.02Hz		
Lamp Flux:40223.9x1 lm		
NAME: ASD-LSB5BHV-PRO-240BR	TYPE:	WEIGHT:
SPEC.: 240W 5000K	DIM.:	SERIAL No.:
MFR.: ASD LIGHTING CORP	SUR.:	Shielding Angle:

ROAD SURFACE ISOCANDELA DIAGRAM



C Range: 0 - 360DEG
 C Interval: 5.0DEG
 Test Speed: HIGH
 Temperature:25.3DEG
 Operators:S
 Test Date:2024-5-30

γ Range: 0 - 180DEG
 γ Interval: 1.0DEG
 Test System:EVERFINE GO-2000B_V1 SYSTEM V2.00.446
 Humidity:65.0%
 Test Distance:7.850m [K=1.0000]
 Remarks:

LUMINOUS DISTRIBUTION INTENSITY DATA

Test:U:277.39V I:0.8631A P:238.82W PF:0.9976 Freq:50.02Hz Lamp Flux:40223.9x1 lm		
NAME: ASD-LSB5BHV-PRO-240BR	TYPE:	WEIGHT:
SPEC.: 240W 5000K	DIM.:	SERIAL No.:
MFR.: ASD LIGHTING CORP	SUR.:	Shielding Angle:

Table--1

UNIT: X10cd

C (DEG) \ γ (DEG)	0	5	10	15	20	25	30	35	40	45	50	55	60	65	70	75	80	85	90
0	1085	1084	1082	1081	1079	1078	1077	1076	1074	1073	1073	1072	1071	1070	1069	1068	1067	1067	1066
5	1085	1086	1087	1087	1088	1088	1089	1089	1089	1089	1089	1089	1090	1089	1089	1089	1088	1087	1086
10	1083	1086	1089	1091	1093	1095	1097	1098	1099	1100	1101	1101	1102	1102	1102	1102	1101	1101	1100
15	1081	1087	1092	1096	1100	1103	1105	1107	1108	1110	1111	1111	1112	1112	1112	1111	1110	1109	1108
20	1084	1092	1099	1105	1109	1112	1114	1115	1116	1116	1116	1115	1114	1114	1113	1112	1111	1110	1108
25	1093	1103	1110	1116	1119	1120	1120	1119	1117	1115	1112	1110	1108	1107	1106	1105	1103	1102	1101
30	1112	1122	1128	1132	1130	1127	1121	1116	1111	1106	1101	1097	1093	1091	1090	1089	1087	1086	1084
35	1142	1149	1151	1148	1139	1127	1114	1104	1094	1086	1079	1074	1069	1065	1062	1059	1056	1053	1052
40	1176	1180	1177	1168	1147	1123	1100	1084	1070	1059	1050	1041	1033	1024	1016	1008	1000	994	991
45	1204	1206	1198	1182	1151	1116	1082	1062	1045	1031	1014	996	978	957	936	917	900	887	880
50	1245	1221	1193	1160	1117	1074	1036	1020	1007	991	954	911	867	828	793	763	740	724	716
55	1294	1233	1174	1117	1057	1003	959	949	941	923	850	767	686	639	604	579	560	548	544
60	1310	1222	1144	1078	1028	985	944	902	852	791	690	586	495	457	438	430	418	410	407
65	1207	1133	1084	1062	1108	1148	1149	989	793	596	483	401	346	321	312	313	303	296	291
70	932	893	898	947	1125	1284	1360	1104	775	448	323	256	227	204	194	191	178	166	159
75	574	625	674	721	799	850	848	683	482	286	204	156	132	110	97.1	90.7	83.5	79.3	77.9
80	288	378	438	466	457	421	366	291	212	139	102	77.5	63.0	52.1	45.7	42.4	38.5	36.0	34.9
85	118	157	181	190	179	156	127	97.6	68.6	43.2	29.9	21.6	16.7	12.7	10.2	8.63	6.39	4.66	3.59
90	11.4	20.8	26.9	29.7	28.1	24.1	18.6	12.7	6.95	2.16	0.82	0.65	1.11	0.98	0.92	0.90	0.86	0.85	0.85
95	3.95	3.87	3.78	3.66	3.54	3.38	3.18	2.86	2.51	2.16	1.89	1.66	1.47	1.34	1.24	1.19	1.16	1.15	1.17
100	5.06	4.92	4.77	4.59	4.40	4.17	3.91	3.56	3.19	2.82	2.50	2.22	1.98	1.81	1.68	1.60	1.56	1.55	1.56
105	6.18	5.99	5.78	5.55	5.29	5.01	4.70	4.31	3.91	3.51	3.16	2.83	2.56	2.34	2.18	2.07	2.02	2.01	2.03
110	7.16	6.93	6.68	6.40	6.09	5.76	5.41	5.02	4.62	4.23	3.84	3.49	3.17	2.92	2.73	2.59	2.53	2.52	2.53
115	7.91	7.65	7.37	7.08	6.78	6.47	6.13	5.73	5.32	4.91	4.51	4.13	3.80	3.53	3.32	3.16	3.09	3.06	3.08
120	8.40	8.15	7.89	7.62	7.36	7.07	6.75	6.36	5.95	5.54	5.14	4.77	4.43	4.16	3.94	3.77	3.69	3.65	3.66
125	8.66	8.46	8.25	8.01	7.77	7.51	7.22	6.86	6.49	6.11	5.72	5.35	5.02	4.76	4.56	4.41	4.32	4.27	4.27
130	8.68	8.53	8.37	8.19	8.01	7.80	7.56	7.27	6.95	6.61	6.24	5.87	5.54	5.30	5.11	4.97	4.89	4.84	4.82
135	8.55	8.49	8.41	8.30	8.19	8.04	7.86	7.59	7.29	6.97	6.63	6.30	6.01	5.79	5.62	5.49	5.41	5.36	5.34
140	8.42	8.46	8.46	8.42	8.34	8.22	8.05	7.82	7.55	7.27	6.99	6.72	6.47	6.28	6.12	6.00	5.92	5.87	5.85
145	8.43	8.52	8.56	8.55	8.49	8.38	8.23	8.03	7.80	7.57	7.35	7.13	6.94	6.77	6.62	6.50	6.43	6.38	6.35
150	8.63	8.71	8.74	8.73	8.66	8.55	8.41	8.24	8.06	7.87	7.69	7.53	7.37	7.23	7.11	7.00	6.92	6.86	6.81
155	8.87	8.92	8.93	8.91	8.86	8.77	8.67	8.53	8.38	8.23	8.09	7.95	7.82	7.70	7.59	7.49	7.41	7.35	7.29
160	9.26	9.28	9.29	9.26	9.21	9.14	9.04	8.93	8.81	8.68	8.57	8.47	8.36	8.26	8.16	8.07	8.00	7.94	7.89
165	9.67	9.69	9.69	9.66	9.61	9.55	9.47	9.37	9.27	9.17	9.08	9.00	8.91	8.82	8.73	8.65	8.60	8.55	8.52
170	10.0	10.1	10.0	10.0	9.94	9.86	9.76	9.67	9.58	9.49	9.41	9.34	9.26	9.18	9.10	9.04	9.00	8.97	8.95
175	10.3	10.3	10.2	10.2	10.1	9.99	9.90	9.82	9.74	9.67	9.59	9.52	9.45	9.39	9.33	9.29	9.26	9.24	9.22
180	10.4	10.3	10.3	10.2	10.1	10.0	9.97	9.89	9.82	9.76	9.70	9.64	9.59	9.55	9.51	9.49	9.47	9.46	9.46

C Range: 0 - 360DEG
 C Interval: 5.0DEG
 Test Speed: HIGH
 Temperature:25.3DEG
 Operators:S
 Test Date:2024-5-30

γ Range: 0 - 180DEG
 γ Interval: 1.0DEG
 Test System:EVERFINE GO-2000B_V1 SYSTEM V2.00.446
 Humidity:65.0%
 Test Distance:7.850m [K=1.0000]
 Remarks:

LUMINOUS DISTRIBUTION INTENSITY DATA

Test:U:277.39V I:0.8631A P:238.82W PF:0.9976 Freq:50.02Hz Lamp Flux:40223.9x1 lm		
NAME: ASD-LSB5BHV-PRO-240BR	TYPE:	WEIGHT:
SPEC.: 240W 5000K	DIM.:	SERIAL No.:
MFR.: ASD LIGHTING CORP	SUR.:	Shielding Angle:

Table--2

UNIT: X10cd

C (DEG) γ (DEG)	95	100	105	110	115	120	125	130	135	140	145	150	155	160	165	170	175	180	185	
0	1065	1063	1062	1061	1061	1061	1061	1060	1059	1059	1059	1060	1058	1058	1059	1068	1077	1085	1086	
5	1085	1084	1082	1081	1080	1080	1080	1078	1077	1075	1074	1073	1072	1069	1067	1066	1073	1080	1086	1083
10	1098	1097	1096	1095	1094	1093	1091	1090	1088	1087	1085	1083	1080	1077	1075	1080	1085	1088	1083	
15	1107	1106	1105	1104	1103	1103	1102	1101	1100	1099	1098	1097	1093	1090	1087	1090	1093	1093	1085	
20	1107	1106	1105	1105	1105	1106	1107	1108	1109	1110	1111	1112	1110	1108	1105	1107	1108	1106	1093	
25	1100	1099	1098	1098	1098	1100	1102	1105	1109	1113	1118	1123	1126	1128	1130	1133	1134	1129	1113	
30	1083	1083	1083	1082	1082	1083	1086	1091	1096	1105	1114	1124	1135	1145	1155	1164	1168	1165	1145	
35	1052	1053	1055	1055	1056	1058	1061	1067	1075	1087	1102	1119	1139	1160	1178	1194	1203	1201	1181	
40	994	999	1006	1011	1017	1024	1031	1040	1052	1071	1092	1116	1144	1171	1195	1212	1221	1219	1197	
45	885	895	910	926	946	966	985	1005	1025	1043	1063	1086	1116	1148	1178	1209	1232	1239	1211	
50	718	729	747	776	810	848	890	930	965	979	991	1007	1047	1094	1144	1201	1249	1277	1257	
55	544	552	567	590	622	666	740	817	889	922	947	971	1014	1063	1116	1186	1249	1296	1303	
60	407	413	423	429	446	484	571	676	787	894	989	1064	1080	1082	1084	1130	1183	1234	1277	
65	292	297	305	302	311	342	421	529	663	865	1054	1194	1150	1060	963	964	989	1026	1070	
70	163	171	183	186	198	226	285	368	478	670	851	985	932	831	721	701	702	716	729	
75	78.5	82.0	88.7	96.4	110	131	163	206	262	353	443	517	528	518	493	464	437	421	447	
80	35.0	36.5	39.3	42.4	47.8	56.2	68.5	85.7	109	146	186	221	242	254	256	233	213	207	274	
85	3.83	4.71	6.05	7.05	8.58	10.9	14.2	18.9	25.4	36.3	48.2	59.9	69.6	76.9	80.6	70.4	61.7	60.5	97.3	
90	0.86	0.90	0.95	1.02	1.11	1.25	1.46	1.71	2.01	2.34	2.70	3.06	3.42	3.75	4.03	4.19	4.31	4.41	4.61	
95	1.18	1.21	1.27	1.36	1.50	1.67	1.91	2.18	2.49	2.83	3.16	3.49	3.71	3.93	4.20	4.71	5.22	5.64	5.72	
100	1.57	1.60	1.67	1.80	1.97	2.18	2.45	2.76	3.10	3.49	3.89	4.25	4.43	4.63	4.90	5.57	6.26	6.83	6.93	
105	2.03	2.07	2.15	2.30	2.51	2.76	3.07	3.41	3.78	4.18	4.58	4.95	5.18	5.43	5.77	6.52	7.27	7.89	7.99	
110	2.54	2.58	2.67	2.84	3.08	3.36	3.71	4.09	4.48	4.88	5.27	5.64	5.86	6.12	6.46	7.23	8.02	8.67	8.78	
115	3.09	3.13	3.23	3.41	3.64	3.94	4.32	4.72	5.14	5.54	5.91	6.25	6.46	6.70	7.02	7.77	8.53	9.18	9.32	
120	3.67	3.72	3.81	3.97	4.18	4.46	4.84	5.26	5.69	6.10	6.48	6.83	7.03	7.24	7.53	8.20	8.89	9.47	9.64	
125	4.27	4.32	4.40	4.55	4.75	5.00	5.33	5.69	6.08	6.48	6.86	7.21	7.41	7.61	7.86	8.44	9.04	9.56	9.75	
130	4.83	4.86	4.94	5.06	5.22	5.41	5.62	5.86	6.15	6.55	6.97	7.37	7.58	7.77	8.01	8.50	9.00	9.45	9.65	
135	5.34	5.37	5.43	5.53	5.66	5.81	5.94	6.11	6.30	6.59	6.90	7.22	7.48	7.76	8.05	8.48	8.90	9.27	9.43	
140	5.84	5.86	5.90	5.97	6.07	6.19	6.32	6.46	6.61	6.73	6.87	7.06	7.36	7.71	8.08	8.49	8.86	9.15	9.23	
145	6.33	6.33	6.35	6.39	6.46	6.55	6.65	6.76	6.88	7.01	7.15	7.29	7.39	7.53	7.74	8.24	8.75	9.18	9.22	
150	6.77	6.74	6.73	6.74	6.77	6.82	6.88	6.95	7.05	7.20	7.36	7.52	7.57	7.66	7.84	8.35	8.88	9.34	9.37	
155	7.23	7.19	7.17	7.17	7.19	7.22	7.27	7.33	7.40	7.49	7.59	7.70	7.75	7.85	8.03	8.54	9.07	9.52	9.57	
160	7.84	7.80	7.77	7.76	7.77	7.79	7.82	7.85	7.90	7.98	8.06	8.16	8.21	8.30	8.47	8.91	9.37	9.75	9.78	
165	8.48	8.45	8.43	8.41	8.41	8.41	8.41	8.43	8.46	8.53	8.61	8.69	8.73	8.80	8.93	9.30	9.68	9.99	10.00	
170	8.94	8.92	8.92	8.91	8.91	8.93	8.96	9.00	9.06	9.13	9.21	9.29	9.31	9.35	9.43	9.72	10.0	10.2	10.2	
175	9.22	9.23	9.23	9.24	9.24	9.26	9.29	9.34	9.40	9.46	9.55	9.68	9.98	10.3	10.5	10.6	10.6	10.5	10.4	
180	9.47	9.49	9.51	9.52	9.53	9.54	9.57	9.61	9.67	9.72	9.79	9.91	10.2	10.5	10.7	10.6	10.5	10.4	10.3	

C Range: 0 - 360DEG
 C Interval: 5.0DEG
 Test Speed: HIGH
 Temperature:25.3DEG
 Operators:S
 Test Date:2024-5-30

γ Range: 0 - 180DEG
 γ Interval: 1.0DEG
 Test System:EVERFINE GO-2000B_V1 SYSTEM V2.00.446
 Humidity:65.0%
 Test Distance:7.850m [K=1.0000]
 Remarks:

LUMINOUS DISTRIBUTION INTENSITY DATA

Test:U:277.39V I:0.8631A P:238.82W PF:0.9976 Freq:50.02Hz Lamp Flux:40223.9x1 lm		
NAME: ASD-LSB5BHV-PRO-240BR	TYPE:	WEIGHT:
SPEC.: 240W 5000K	DIM.:	SERIAL No.:
MFR.: ASD LIGHTING CORP	SUR.:	Shielding Angle:

Table--3

UNIT: X10cd

C (DEG) γ (DEG)	190	195	200	205	210	215	220	225	230	235	240	245	250	255	260	265	270	275	280
0	1084	1081	1079	1078	1077	1076	1074	1073	1073	1072	1071	1070	1069	1068	1067	1067	1066	1065	1063
5	1079	1073	1070	1066	1062	1058	1055	1051	1048	1046	1043	1041	1038	1036	1034	1033	1032	1031	1030
10	1075	1066	1059	1052	1044	1037	1029	1022	1016	1011	1006	1001	996	992	990	988	987	985	984
15	1073	1060	1047	1035	1022	1010	998	986	977	968	960	952	945	939	935	933	931	930	929
20	1077	1058	1039	1020	1001	982	964	948	933	921	909	899	889	882	877	873	871	870	870
25	1090	1064	1037	1009	981	955	931	909	890	874	860	847	836	827	819	814	811	809	810
30	1118	1084	1045	1005	966	932	901	873	851	833	816	799	784	771	759	751	745	745	748
35	1150	1110	1060	1006	954	911	872	838	812	788	767	744	722	703	688	677	671	671	677
40	1163	1120	1066	1009	950	897	848	803	765	730	699	669	643	621	605	595	590	591	598
45	1168	1112	1053	990	925	865	808	753	702	655	614	583	558	540	527	520	517	517	522
50	1212	1147	1066	977	886	808	737	671	614	565	525	500	483	472	463	458	456	455	458
55	1283	1233	1137	1021	897	782	675	582	521	476	447	432	425	423	417	412	409	411	414
60	1300	1289	1209	1094	957	797	641	504	437	398	379	365	360	360	357	355	355	357	359
65	1105	1123	1102	1048	958	788	607	441	370	332	315	300	293	291	288	287	288	289	290
70	745	762	797	814	796	665	511	364	304	269	251	227	210	197	187	181	180	184	191
75	480	510	516	505	476	407	328	253	213	185	164	140	121	107	99.3	96.1	96.3	97.0	101
80	344	394	343	268	189	152	126	110	99.2	92.6	87.8	78.1	69.0	61.5	58.8	58.0	58.5	57.8	58.6
85	135	162	135	94.5	52.8	37.9	30.2	27.6	27.1	28.4	30.3	29.6	28.4	27.2	26.5	26.2	26.2	26.8	28.0
90	4.79	4.92	4.92	4.85	4.72	4.54	4.32	4.08	3.86	3.61	3.31	2.86	2.40	2.01	1.79	1.69	1.72	1.97	2.29
95	5.67	5.51	5.29	5.02	4.72	4.44	4.14	3.82	3.42	3.02	2.65	2.38	2.16	1.99	1.90	1.86	1.85	1.84	1.88
100	6.84	6.60	6.30	5.95	5.56	5.25	4.93	4.60	4.20	3.80	3.42	3.10	2.83	2.62	2.50	2.44	2.42	2.43	2.48
105	7.87	7.59	7.22	6.79	6.34	6.01	5.70	5.39	5.02	4.65	4.29	3.95	3.65	3.41	3.26	3.17	3.14	3.15	3.22
110	8.67	8.38	7.99	7.53	7.06	6.73	6.43	6.14	5.81	5.49	5.16	4.83	4.53	4.27	4.11	4.01	3.97	3.99	4.06
115	9.26	9.03	8.69	8.28	7.85	7.52	7.20	6.90	6.60	6.30	6.01	5.70	5.41	5.17	5.01	4.92	4.88	4.90	4.97
120	9.64	9.48	9.21	8.87	8.50	8.18	7.86	7.56	7.27	7.00	6.74	6.48	6.24	6.04	5.91	5.83	5.80	5.82	5.89
125	9.78	9.68	9.46	9.16	8.83	8.55	8.28	8.02	7.76	7.53	7.31	7.14	6.99	6.87	6.77	6.70	6.67	6.70	6.76
130	9.73	9.69	9.52	9.27	8.98	8.71	8.44	8.19	8.02	7.87	7.76	7.68	7.62	7.58	7.51	7.46	7.43	7.46	7.51
135	9.49	9.47	9.37	9.22	9.03	8.79	8.56	8.35	8.25	8.18	8.15	8.14	8.14	8.14	8.10	8.07	8.06	8.09	8.13
140	9.23	9.18	9.15	9.11	9.04	8.90	8.75	8.62	8.55	8.51	8.50	8.50	8.51	8.52	8.52	8.52	8.53	8.55	8.59
145	9.16	9.04	9.03	9.03	9.02	8.97	8.91	8.86	8.82	8.80	8.78	8.77	8.75	8.75	8.77	8.79	8.82	8.85	8.89
150	9.29	9.16	9.13	9.12	9.11	9.09	9.08	9.06	9.03	9.00	8.97	8.95	8.93	8.92	8.94	8.96	8.99	9.02	9.06
155	9.50	9.37	9.34	9.32	9.30	9.28	9.26	9.24	9.21	9.19	9.17	9.16	9.15	9.16	9.17	9.19	9.21	9.23	9.26
160	9.71	9.58	9.54	9.51	9.48	9.44	9.40	9.37	9.35	9.34	9.34	9.35	9.36	9.37	9.39	9.41	9.43	9.45	9.48
165	9.91	9.79	9.74	9.69	9.65	9.60	9.56	9.53	9.52	9.51	9.51	9.52	9.53	9.54	9.56	9.58	9.60	9.62	9.64
170	10.1	10.00	9.94	9.89	9.84	9.79	9.74	9.71	9.69	9.67	9.67	9.65	9.64	9.63	9.65	9.68	9.71	9.72	9.74
175	10.3	10.2	10.1	10.1	9.99	9.92	9.86	9.80	9.76	9.73	9.71	9.67	9.64	9.63	9.64	9.66	9.68	9.70	9.71
180	10.2	10.2	10.1	10.0	9.98	9.90	9.82	9.74	9.69	9.65	9.61	9.56	9.51	9.47	9.46	9.47	9.48	9.48	9.49

C Range: 0 - 360DEG
 C Interval: 5.0DEG
 Test Speed: HIGH
 Temperature:25.3DEG
 Operators:S
 Test Date:2024-5-30

γ Range: 0 - 180DEG
 γ Interval: 1.0DEG
 Test System:EVERFINE GO-2000B_V1 SYSTEM V2.00.446
 Humidity:65.0%
 Test Distance:7.850m [K=1.0000]
 Remarks:

LUMINOUS DISTRIBUTION INTENSITY DATA

Test:U:277.39V I:0.8631A P:238.82W PF:0.9976 Freq:50.02Hz Lamp Flux:40223.9x1 lm		
NAME: ASD-LSB5BHV-PRO-240BR	TYPE:	WEIGHT:
SPEC.: 240W 5000K	DIM.:	SERIAL No.:
MFR.: ASD LIGHTING CORP	SUR.:	Shielding Angle:

Table--4

UNIT: X10cd

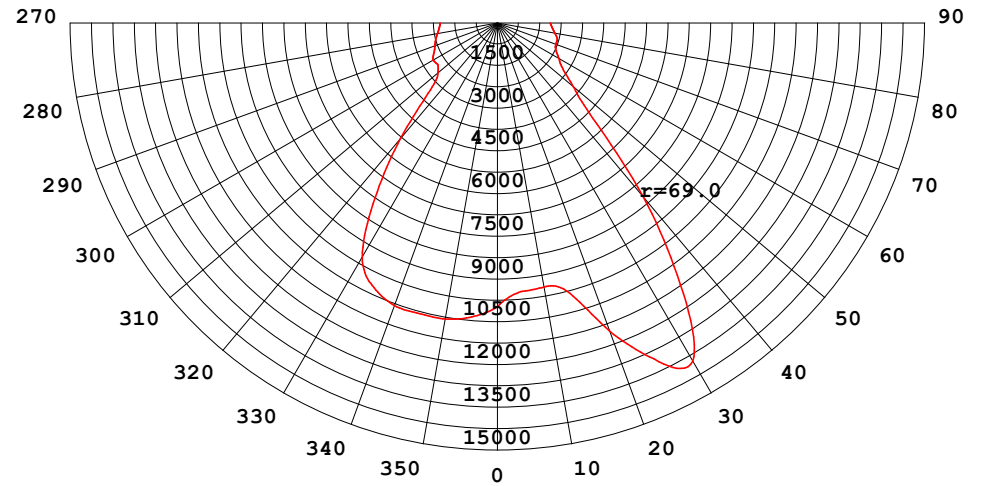
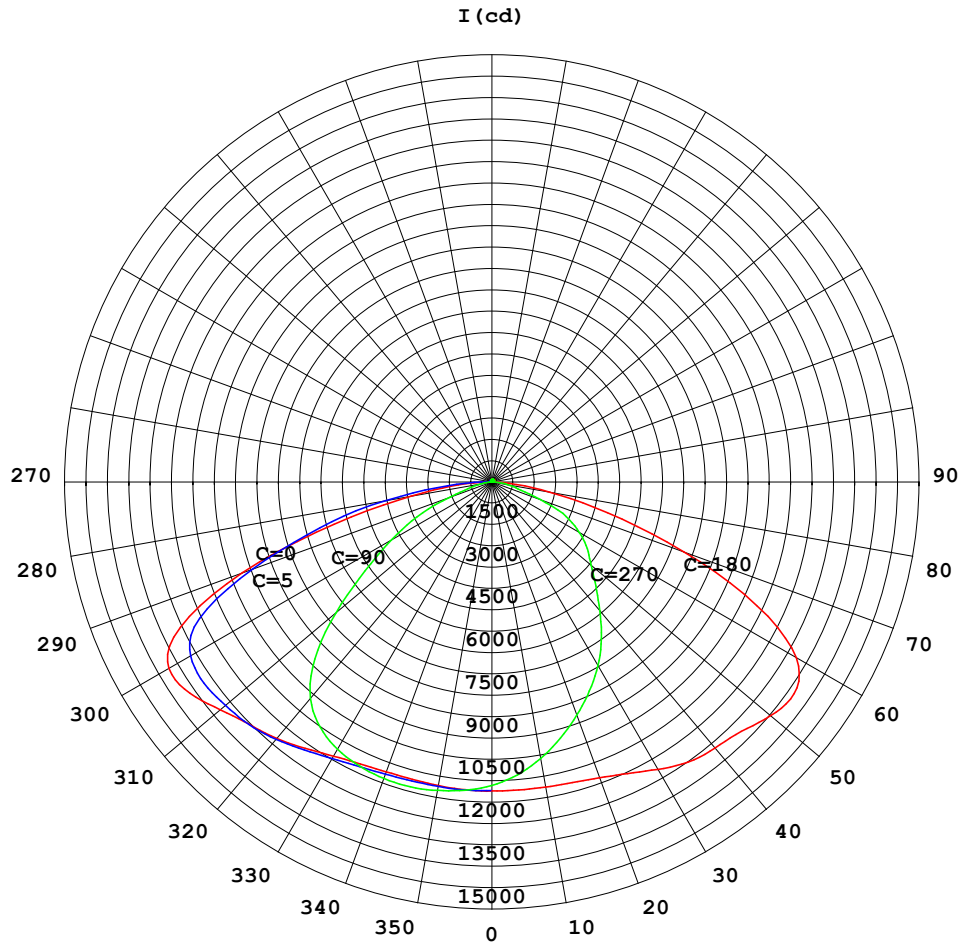
C (DEG) \ γ (DEG)	285	290	295	300	305	310	315	320	325	330	335	340	345	350	355				
0	1062	1061	1061	1061	1061	1060	1059	1059	1059	1060	1058	1058	1059	1065	1074				
5	1029	1030	1031	1033	1034	1035	1037	1039	1042	1044	1046	1048	1052	1060	1071				
10	984	987	990	993	997	1001	1005	1011	1017	1024	1028	1034	1041	1052	1066				
15	930	934	939	945	951	959	967	977	987	998	1007	1017	1028	1043	1060				
20	872	877	884	892	902	913	925	940	955	970	985	1000	1017	1037	1059				
25	814	821	831	842	854	868	883	902	922	943	965	988	1012	1037	1064				
30	755	766	780	796	810	826	844	867	892	919	949	981	1014	1046	1079				
35	688	706	726	748	767	787	809	835	864	898	939	983	1027	1067	1105				
40	611	631	655	682	710	739	771	803	839	880	934	990	1046	1094	1137				
45	532	548	571	599	636	677	723	768	817	870	930	993	1054	1108	1158				
50	465	475	491	515	553	600	653	712	775	841	911	982	1052	1118	1182				
55	420	421	427	441	470	511	566	641	726	818	914	1008	1097	1172	1237				
60	363	362	366	375	390	420	473	578	703	838	976	1105	1214	1277	1309				
65	293	295	301	311	310	330	387	550	739	927	1058	1160	1230	1258	1251				
70	202	215	230	248	244	262	321	520	738	934	990	1000	982	977	960				
75	109	124	144	167	175	199	248	391	542	668	674	644	600	587	578				
80	61.7	69.9	80.6	93.3	102	116	138	185	236	286	322	346	357	350	326				
85	29.7	32.6	35.7	38.5	37.6	37.6	40.1	43.7	55.3	78.9	147	213	261	249	202				
90	2.62	2.73	2.84	2.99	3.17	3.57	4.29	4.81	6.36	9.53	19.0	28.3	34.6	32.3	24.5				
95	1.97	2.18	2.44	2.76	3.12	3.49	3.84	4.10	4.32	4.50	4.73	4.89	4.93	4.76	4.43				
100	2.58	2.75	2.97	3.23	3.55	3.89	4.24	4.53	4.81	5.09	5.47	5.78	5.96	5.85	5.55				
105	3.34	3.53	3.77	4.05	4.39	4.74	5.08	5.36	5.62	5.90	6.36	6.76	7.02	6.96	6.68				
110	4.20	4.41	4.66	4.94	5.23	5.53	5.83	6.08	6.35	6.66	7.16	7.63	7.95	7.92	7.66				
115	5.10	5.30	5.54	5.81	6.06	6.32	6.59	6.85	7.12	7.44	7.94	8.41	8.73	8.69	8.42				
120	6.00	6.17	6.37	6.60	6.84	7.10	7.36	7.63	7.92	8.23	8.69	9.08	9.34	9.25	8.94				
125	6.85	6.97	7.13	7.31	7.55	7.80	8.07	8.32	8.58	8.84	9.22	9.53	9.70	9.56	9.22				
130	7.59	7.67	7.78	7.92	8.15	8.40	8.66	8.85	9.03	9.19	9.45	9.64	9.72	9.55	9.20				
135	8.20	8.26	8.34	8.45	8.63	8.83	9.03	9.17	9.29	9.41	9.62	9.78	9.81	9.58	9.16				
140	8.65	8.71	8.80	8.89	9.01	9.14	9.26	9.36	9.45	9.54	9.76	9.91	9.92	9.63	9.13				
145	8.94	9.02	9.10	9.19	9.27	9.35	9.43	9.50	9.57	9.66	9.87	10.0	10.0	9.70	9.17				
150	9.11	9.18	9.25	9.33	9.40	9.47	9.55	9.62	9.69	9.78	9.98	10.1	10.1	9.84	9.34				
155	9.30	9.34	9.39	9.45	9.52	9.60	9.69	9.78	9.87	9.96	10.2	10.3	10.3	10.0	9.54				
160	9.50	9.53	9.57	9.61	9.66	9.73	9.80	9.88	9.98	10.1	10.3	10.5	10.5	10.3	9.87				
165	9.66	9.68	9.70	9.73	9.77	9.82	9.88	9.95	10.0	10.2	10.4	10.7	10.8	10.6	10.2				
170	9.75	9.77	9.78	9.81	9.83	9.87	9.92	9.98	10.1	10.2	10.5	10.8	10.9	10.8	10.5				
175	9.72	9.74	9.75	9.77	9.78	9.81	9.85	9.91	10.0	10.1	10.4	10.7	10.9	10.9	10.7				
180	9.50	9.51	9.53	9.55	9.57	9.60	9.65	9.71	9.79	9.92	10.2	10.5	10.7	10.7	10.6				

C Range: 0 - 360DEG
 C Interval: 5.0DEG
 Test Speed: HIGH
 Temperature:25.3DEG
 Operators:S
 Test Date:2024-5-30

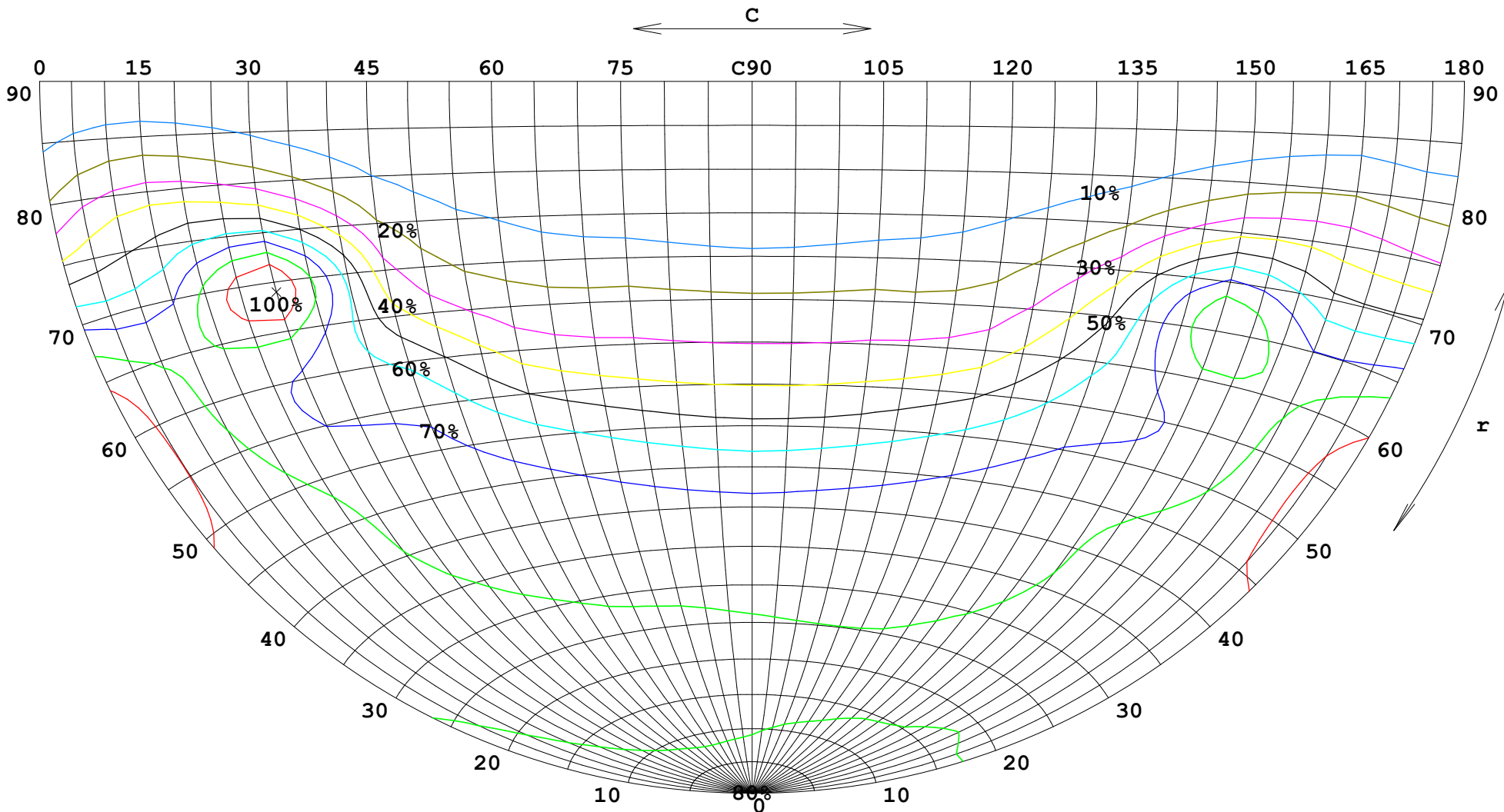
γ Range: 0 - 180DEG
 γ Interval: 1.0DEG
 Test System:EVERFINE GO-2000B_V1 SYSTEM V2.00.446
 Humidity:65.0%
 Test Distance:7.850m [K=1.0000]
 Remarks:

FLUX DATA:

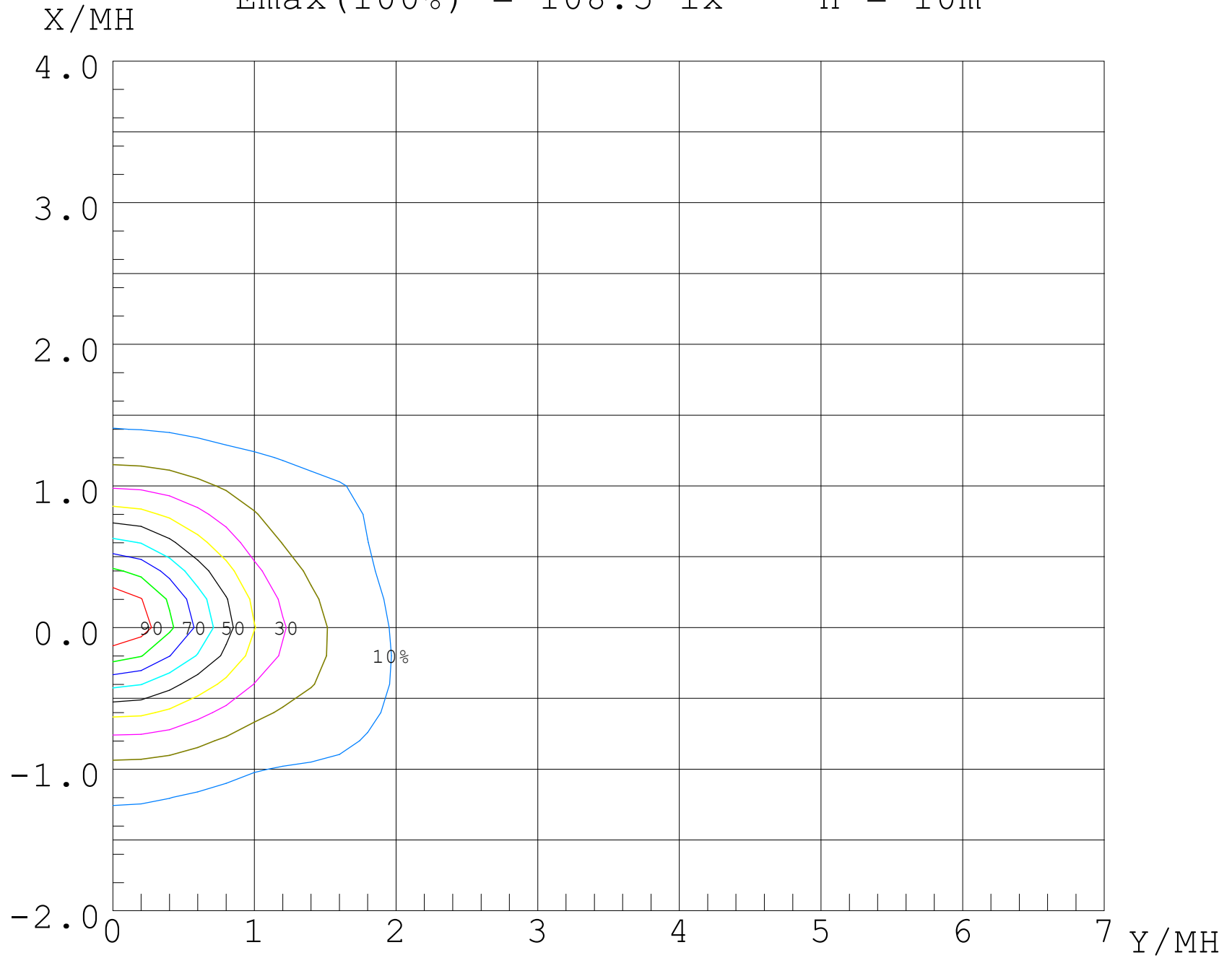
LOR: 100.0 %
 STREET DOWN: 21576 lm
 STREET UP: 173.8 lm
 HOUSE DOWN: 18251 lm
 HOUSE UP: 223.4 lm



$I_{max}(100\%) = 13723 \text{ cd}$



$E_{\max}(100\%) = 108.5 \text{ lx}$ $H = 10\text{m}$



UF (%)

80

70

60

50

40

30

20

10

0

-2

-1

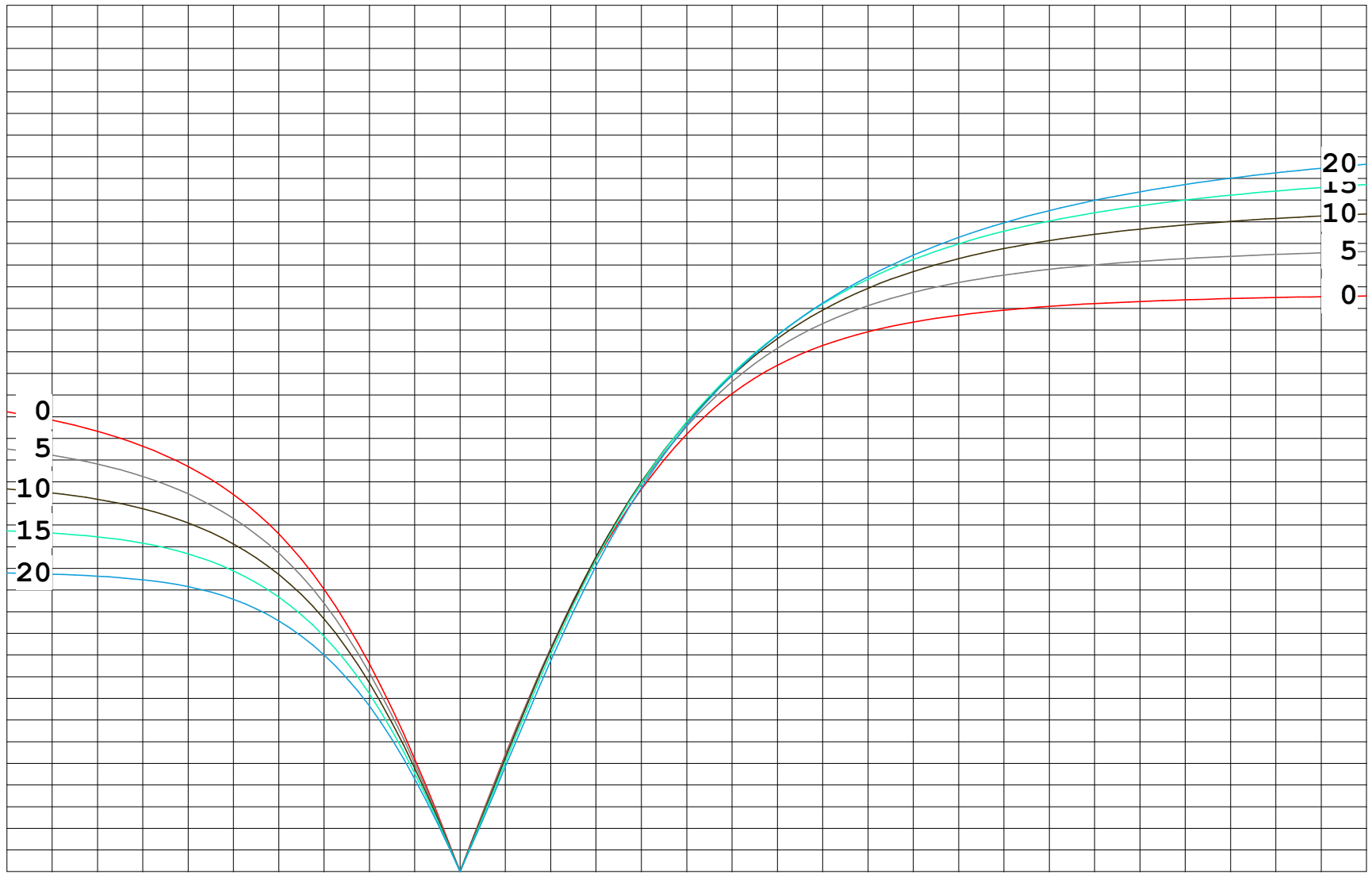
0

1

2

3

4 X/MH



20
15
10
5
0

0
5
10
15
20