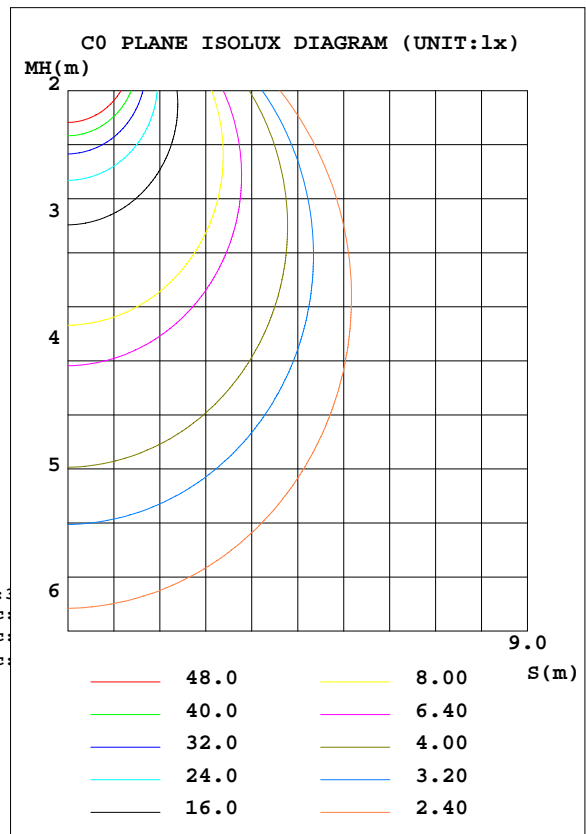
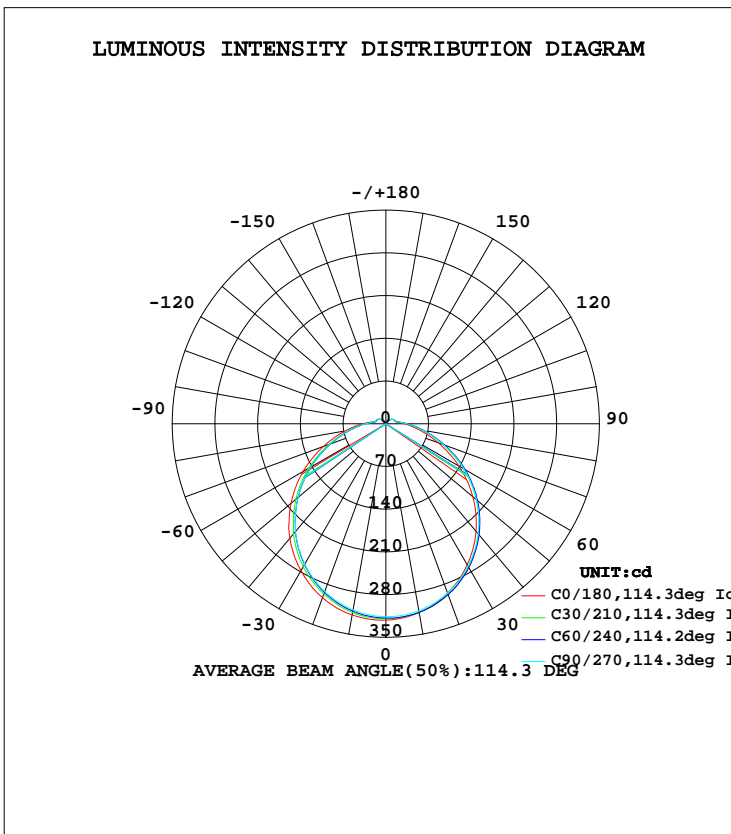


LUMINAIRE PHOTOMETRIC TEST REPORT

Test:U:119.8V I:0.1327A P:15.69W PF:0.9870 Lamp Flux:1060.88x1 lm		
NAME: ASD-LSFDR-12D15CC-BZ	TYPE:	WEIGHT:
SPEC.:	DIM.:	SERIAL No.:
MFR.: ASD Lighting Corp	SUR.:	PROTECTION ANGLE:

DATA OF LAMP		PHOTOMETRIC DATA Eff: 67.61 lm/W			
MODEL	ASD-LSFDR-12D15CC-BZ	I <sub>max</sub> (cd)	321.9	S/MH(C0/180)	1.29
NOMINAL POWER(W)	15	LOR(%)	100.0	S/MH(C90/270)	1.25
RATED VOLTAGE(V)	120	TOTAL FLUX(lm)	1060.9	η UP, DN(C0-180)	4.0,45.5
NOMINAL FLUX(lm)	1060.88	CIE CLASS	DIRECT	η UP, DN(C180-360)	4.2,46.3
LAMPS INSIDE	1	η up(%)	8.2	CIBSE SHR NOM	1.25
TEST VOLTAGE(V)	119.9	η down(%)	91.8	CIBSE SHR MAX	1.35



C Range: 0 - 360DEG  
 C Interval: 15.0DEG  
 Test Speed: HIGH  
 Temperature:25.3DEG  
 Operators:wxh  
 Test Date:2019-05-15

γ Range: 0 - 180DEG  
 γ Interval: 1.0DEG  
 Test System:EVERFINE GO-2000B\_V1 SYSTEM V2.0.291  
 Humidity:65.0%  
 Test Distance:7.500m [K=1.0000]  
 Remarks:

## ZONAL FLUX DIAGRAM

## ZONAL FLUX DIAGRAM:

$\gamma$	C0	C45	C90	C135	C180	C225	C270	C315	$\gamma$	$\Phi$ zone	$\Phi$ total	$\Phi$ lum,lamp
10	314.1	313.6	311.2	308.3	318.0	312.2	309.7	311.1	0- 10	30.04	30.04	2.83,2.83
20	295.6	298.4	295.3	290.6	303.5	295.1	292.7	296.0	10- 20	86.06	116.1	10.9,10.9
30	266.7	272.8	269.4	263.0	278.4	267.9	265.9	271.0	20- 30	130.6	246.7	23.3,23.3
40	229.9	238.2	235.3	226.8	244.7	232.1	230.2	237.4	30- 40	157.9	404.6	38.1,38.1
50	186.1	195.8	193.9	184.6	202.8	189.4	187.9	196.4	40- 50	164.7	569.3	53.7,53.7
60	138.1	149.2	147.7	138.0	156.6	142.7	141.7	150.8	50- 60	151.1	720.3	67.9,67.9
70	91.24	102.3	100.9	92.49	109.1	96.65	96.33	103.8	60- 70	120.7	841.0	79.3,79.3
80	54.34	62.68	61.97	55.39	67.79	58.69	58.82	63.85	70- 80	83.09	924.1	87.1,87.1
90	29.97	35.40	34.94	30.29	38.01	32.66	32.96	36.04	80- 90	50.16	974.2	91.8,91.8
100	17.25	19.32	19.14	17.06	20.07	18.41	18.75	19.67	90-100	27.40	1002	94.4,94.4
110	16.03	15.80	15.84	16.02	16.71	16.36	16.47	16.40	100-110	17.75	1019	96.1,96.1
120	13.99	14.46	14.38	13.79	15.08	14.16	14.42	14.96	110-120	15.37	1035	97.5,97.5
130	10.70	11.30	11.13	10.45	11.68	10.67	10.98	11.71	120-130	11.47	1046	98.6,98.6
140	7.410	7.888	7.657	7.025	8.118	7.221	7.545	8.368	130-140	7.264	1053	99.3,99.3
150	4.624	4.924	4.636	4.251	5.023	4.457	4.696	5.378	140-150	3.873	1057	99.7,99.7
160	4.109	4.040	4.021	3.982	4.244	4.148	4.136	4.102	150-160	1.965	1059	99.9,99.9
170	4.175	4.113	4.078	4.067	4.221	4.159	4.132	4.098	160-170	1.161	1060	100,100
180	4.252	4.225	4.159	4.159	4.267	4.213	4.159	4.156	170-180	0.3959	1061	100,100
DEG	LUMINOUS INTENSITY:cd									UNIT:lm		

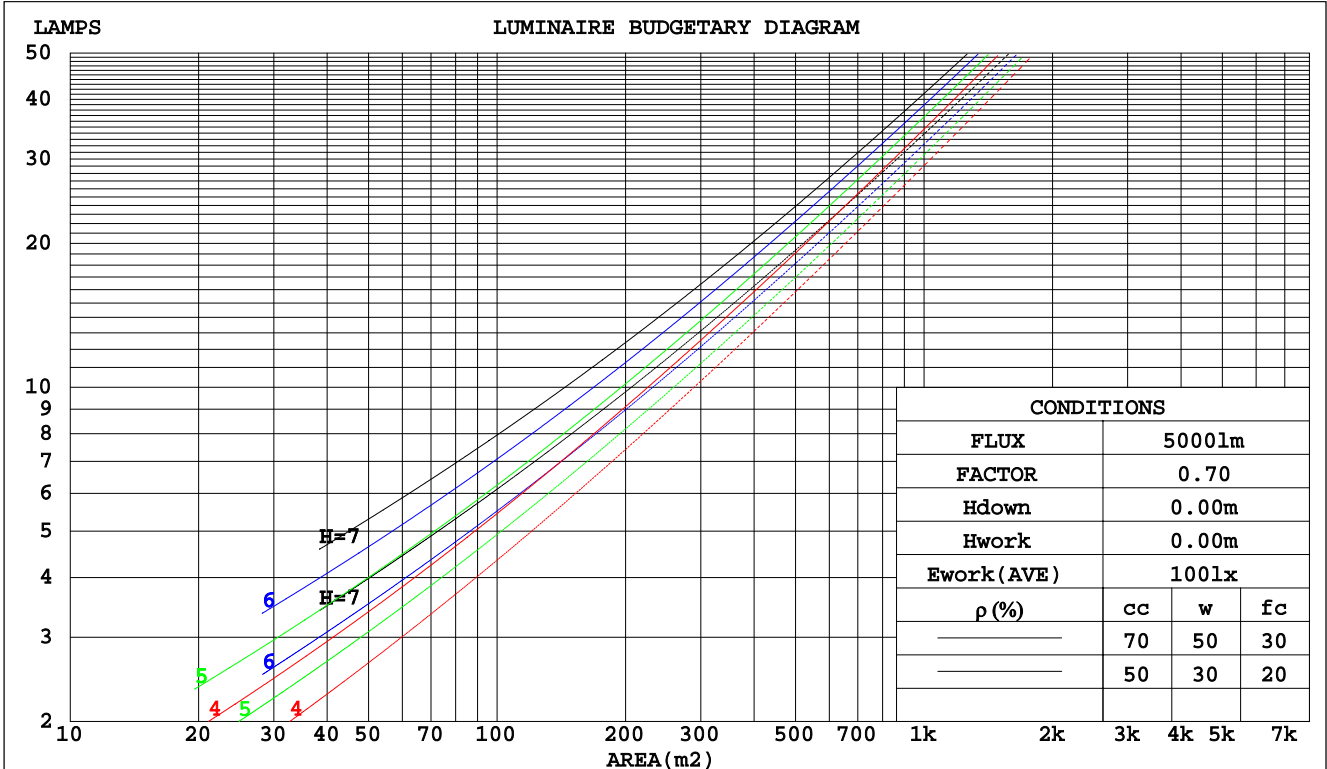
C Range: 0 - 360DEG  
C Interval: 15.0DEG  
Test Speed: HIGH  
Temperature:25.3DEG  
Operators:wxh  
Test Date:2019-05-15

$\gamma$  Range: 0 - 180DEG  
 $\gamma$  Interval: 1.0DEG  
Test System:EVERFINE GO-2000B\_V1 SYSTEM V2.0.291  
Humidity:65.0%  
Test Distance:7.500m [K=1.0000]  
Remarks:

CU AND LUMINAIRE BUDGETARY ESTIMATE DIAGRAM

Test:U:119.8V I:0.1327A P:15.69W PF:0.9870 Lamp Flux:1060.88x1 lm		
NAME: ASD-LSFDR-12D15CC-BZ	TYPE:	WEIGHT:
SPEC.:	DIM.:	SERIAL No.:
MFR.: ASD Lighting Corp	SUR.:	PROTECTION ANGLE:

pcc	80%			70%			50%			30%			10%			0
	50%	30%	10%	50%	30%	10%	50%	30%	10%	50%	30%	10%	50%	30%	10%	0
pw																0
pfc	20%			20%			20%			20%			20%			0
RCR	RCR:Room Cavity Ratio															
	Coefficients of Utilization(CU)															
0.0	1.17	1.17	1.17	1.13	1.13	1.13	1.07	1.07	1.07	1.00	1.00	1.00	.95	.95	.95	.92
1.0	1.00	.95	.91	.97	.93	.89	.91	.88	.84	.86	.83	.80	.81	.79	.77	.74
2.0	.87	.79	.73	.84	.77	.72	.79	.74	.69	.75	.70	.66	.70	.67	.63	.61
3.0	.76	.67	.60	.74	.66	.59	.69	.63	.57	.65	.60	.55	.62	.57	.53	.51
4.0	.67	.58	.51	.65	.57	.50	.61	.54	.49	.58	.52	.47	.55	.50	.46	.43
5.0	.60	.50	.44	.58	.49	.43	.55	.48	.42	.52	.46	.41	.49	.44	.39	.37
6.0	.54	.45	.38	.52	.44	.37	.50	.42	.36	.47	.41	.36	.45	.39	.35	.32
7.0	.49	.40	.33	.47	.39	.33	.45	.38	.32	.43	.36	.31	.41	.35	.31	.28
8.0	.44	.36	.30	.43	.35	.29	.41	.34	.29	.39	.33	.28	.38	.32	.27	.25
9.0	.41	.32	.27	.40	.32	.26	.38	.31	.26	.36	.30	.25	.35	.29	.25	.23
10.0	.37	.29	.24	.37	.29	.24	.35	.28	.23	.34	.27	.23	.32	.27	.22	.21



C Range: 0 - 360DEG  
 C Interval: 15.0DEG  
 Test Speed: HIGH  
 Temperature: 25.3DEG  
 Operators: wxh  
 Test Date: 2019-05-15

γ Range: 0 - 180DEG  
 γ Interval: 1.0DEG  
 Test System: EVERFINE GO-2000B\_V1 SYSTEM V2.0.291  
 Humidity: 65.0%  
 Test Distance: 7.500m [K=1.0000]  
 Remarks:

WEC AND CCEC

Test:U:119.8V I:0.1327A P:15.69W PF:0.9870 Lamp Flux:1060.88x1 lm		
NAME: ASD-LSFDR-12D15CC-BZ	TYPE:	WEIGHT:
SPEC.:	DIM.:	SERIAL No.:
MFR.: ASD Lighting Corp	SUR.:	PROTECTION ANGLE:

ρcc	80%			70%			50%			30%			10%			0
ρw	50%	30%	10%	50%	30%	10%	50%	30%	10%	50%	30%	10%	50%	30%	10%	0
ρfc	20%			20%			20%			20%			20%			0
RCR	RCR:Room Cavity Ratio						Wall Exitance Coefficients(WEC)									
0.0																
1.0	.344	.196	.062	.334	.191	.061	.316	.181	.058	.300	.173	.055	.284	.165	.053	
2.0	.309	.169	.052	.301	.166	.051	.284	.158	.049	.270	.151	.047	.256	.145	.046	
3.0	.280	.149	.045	.273	.146	.044	.258	.140	.043	.245	.134	.041	.232	.129	.040	
4.0	.256	.133	.039	.249	.130	.038	.236	.125	.037	.224	.120	.036	.212	.115	.035	
5.0	.234	.119	.035	.228	.117	.034	.217	.113	.033	.206	.109	.032	.195	.104	.031	
6.0	.216	.108	.031	.211	.106	.031	.200	.103	.030	.190	.099	.029	.181	.095	.028	
7.0	.201	.099	.028	.195	.097	.028	.186	.094	.027	.177	.091	.026	.168	.088	.026	
8.0	.187	.091	.026	.182	.090	.025	.173	.087	.025	.165	.084	.024	.158	.081	.024	
9.0	.175	.084	.024	.170	.083	.023	.163	.080	.023	.155	.078	.022	.148	.075	.022	
10.0	.164	.079	.022	.160	.077	.022	.153	.075	.021	.146	.072	.021	.139	.070	.020	

ρcc	80%			70%			50%			30%			10%			0
ρw	50%	30%	10%	50%	30%	10%	50%	30%	10%	50%	30%	10%	50%	30%	10%	0
ρfc	20%			20%			20%			20%			20%			0
RCR	RCR:Room Cavity Ratio						Ceiling Cavity Exitance Coefficients(CCEC)									
0.0	.253	.253	.253	.216	.216	.216	.147	.147	.147	.085	.085	.085	.027	.027	.027	
1.0	.245	.219	.194	.210	.188	.167	.144	.129	.116	.083	.075	.067	.026	.024	.022	
2.0	.238	.195	.159	.204	.168	.138	.140	.116	.096	.080	.068	.056	.026	.022	.018	
3.0	.230	.178	.136	.197	.153	.118	.135	.107	.083	.078	.062	.049	.025	.020	.016	
4.0	.222	.165	.121	.191	.143	.105	.131	.099	.074	.076	.058	.044	.024	.019	.014	
5.0	.215	.155	.111	.184	.134	.096	.127	.094	.068	.074	.055	.040	.024	.018	.013	
6.0	.207	.147	.103	.178	.127	.090	.123	.089	.063	.071	.052	.038	.023	.017	.012	
7.0	.200	.140	.097	.172	.121	.085	.119	.085	.060	.069	.050	.036	.022	.016	.012	
8.0	.194	.134	.093	.167	.116	.081	.115	.082	.058	.067	.048	.034	.022	.016	.011	
9.0	.188	.129	.090	.162	.112	.078	.112	.079	.056	.065	.047	.033	.021	.015	.011	
10.0	.182	.125	.087	.157	.109	.076	.109	.076	.054	.063	.045	.032	.021	.015	.011	

C Range: 0 - 360DEG  
 C Interval: 15.0DEG  
 Test Speed: HIGH  
 Temperature:25.3DEG  
 Operators:wxh  
 Test Date:2019-05-15

γ Range: 0 - 180DEG  
 γ Interval: 1.0DEG  
 Test System:EVERFINE GO-2000B\_V1 SYSTEM V2.0.291  
 Humidity:65.0%  
 Test Distance:7.500m [K=1.0000]  
 Remarks:

UGR(Unified Glare Rating) Table

Test:U:119.8V I:0.1327A P:15.69W PF:0.9870 Lamp Flux:1060.88x1 lm										
NAME: ASD-LSFDR-12D15CC-BZ					TYPE:			WEIGHT:		
SPEC.:					DIM.:			SERIAL No.:		
MFR.: ASD Lighting Corp					SUR.:			PROTECTION ANGLE:		
ceiling/cavity	0.7	0.7	0.5	0.5	0.3	0.7	0.7	0.5	0.5	0.3
walls	0.5	0.3	0.5	0.3	0.3	0.5	0.3	0.5	0.3	0.3
working plane	0.2	0.2	0.2	0.2	0.2	0.2	0.2	0.2	0.2	0.2
Room dimensions	Viewed crosswise					Viewed endwise				
x = 2H y = 2H	16.0	17.5	16.4	17.8	18.2	16.2	17.7	16.6	18.0	18.4
3H	17.6	19.0	18.0	19.3	19.8	18.0	19.3	18.4	19.7	20.1
4H	18.4	19.7	18.8	20.1	20.5	18.8	20.1	19.2	20.5	20.9
6H	19.1	20.3	19.6	20.7	21.2	19.6	20.8	20.1	21.2	21.7
8H	19.5	20.7	20.0	21.1	21.6	20.1	21.2	20.5	21.6	22.1
12H	19.9	21.0	20.4	21.5	22.0	20.5	21.6	21.0	22.1	22.5
4H 2H	16.7	18.0	17.1	18.4	18.8	16.9	18.1	17.3	18.5	19.0
3H	18.5	19.6	19.0	20.1	20.6	18.8	19.9	19.3	20.4	20.8
4H	19.5	20.5	20.0	20.9	21.4	19.8	20.8	20.3	21.3	21.8
6H	20.4	21.3	20.9	21.8	22.3	20.8	21.7	21.3	22.2	22.8
8H	20.9	21.7	21.4	22.2	22.8	21.3	22.2	21.9	22.7	23.3
12H	21.4	22.2	21.9	22.7	23.3	21.9	22.7	22.5	23.2	23.8
8H 4H	19.9	20.7	20.4	21.2	21.8	20.2	21.0	20.7	21.5	22.1
6H	21.1	21.8	21.6	22.3	22.9	21.4	22.1	22.0	22.7	23.3
8H	21.7	22.3	22.3	22.9	23.5	22.1	22.8	22.7	23.3	24.0
12H	22.4	23.0	23.0	23.6	24.2	22.9	23.5	23.5	24.1	24.7
12H 4H	20.0	20.7	20.5	21.3	21.8	20.2	21.0	20.8	21.5	22.1
6H	21.2	21.9	21.8	22.4	23.1	21.6	22.2	22.2	22.8	23.4
8H	22.0	22.5	22.6	23.1	23.8	22.4	22.9	23.0	23.5	24.2
Variations with the observer position at spacings:										
S = 1.0H	+ 0.1 / - 0.2					+ 0.1 / - 0.2				
1.5H	+ 0.2 / - 0.3					+ 0.2 / - 0.3				
2.0H	+ 0.2 / - 0.4					+ 0.2 / - 0.4				

CIE Pub.117 Corrected 1061 lm Total Lamp Luminous Flux.(8log(F/F0) = 0.2)

C Range: 0 - 360DEG  
 C Interval: 15.0DEG  
 Test Speed: HIGH  
 Temperature:25.3DEG  
 Operators:wxh  
 Test Date:2019-05-15

γ Range: 0 - 180DEG  
 γ Interval: 1.0DEG  
 Test System:EVERFINE GO-2000B\_V1 SYSTEM V2.0.291  
 Humidity:65.0%  
 Test Distance:7.500m [K=1.0000]  
 Remarks:

## UTILIZATION FACTORS TABLE

Test:U:119.8V I:0.1327A P:15.69W PF:0.9870 Lamp Flux:1060.88x1 lm		
NAME: ASD-LSFDR-12D15CC-BZ	TYPE:	WEIGHT:
SPEC.:	DIM.:	SERIAL No.:
MFR.: ASD Lighting Corp	SUR.:	PROTECTION ANGLE:

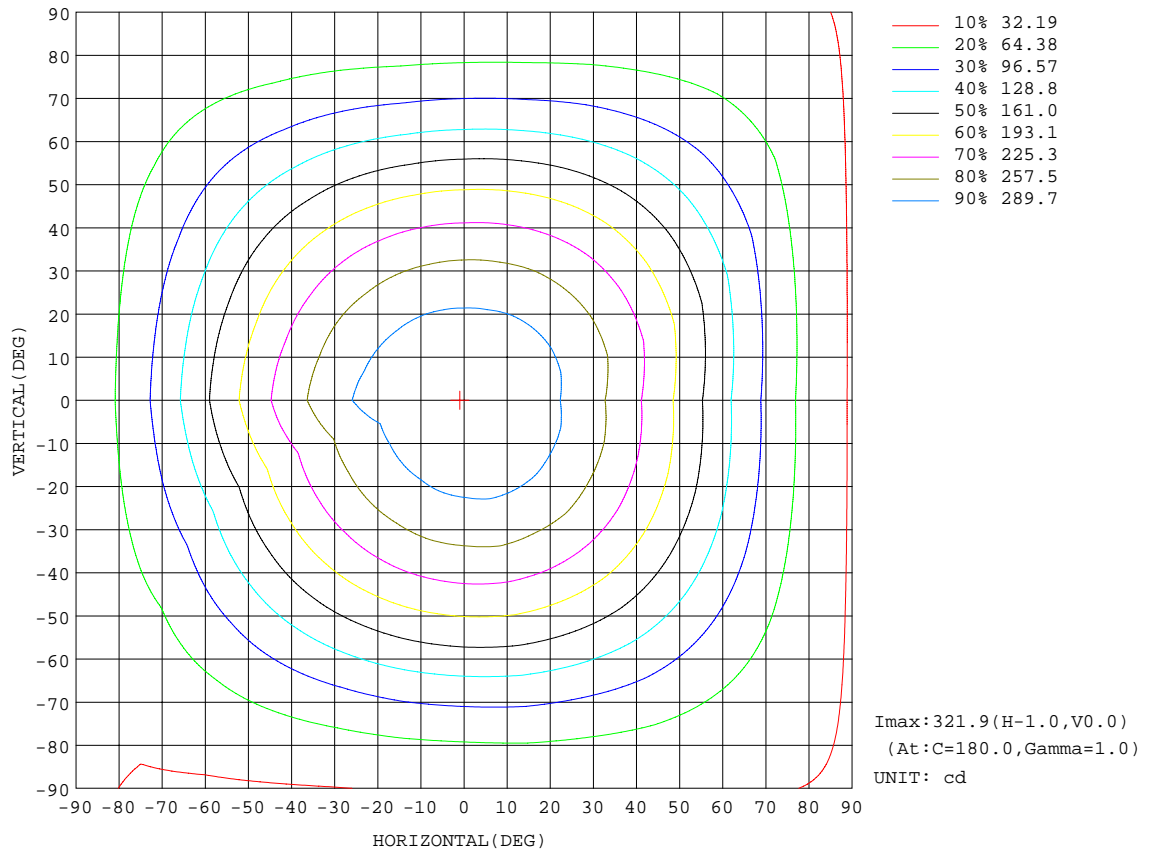
REFLECTANCE										
Ceiling	0.8	0.8	0.8	0.7	0.7	0.7	0.5	0.5	0.5	0
Walls	0.7	0.5	0.3	0.7	0.5	0.3	0.7	0.5	0.3	0
Working plane	0.2	0.2	0.2	0.2	0.2	0.2	0.2	0.2	0.2	0
ROOM INDEX	UTILIZATION FACTORS(PERCENT) $k(RI) \times RCR = 5$									
k = 0.60	54	42	35	53	41	34	51	41	34	28
0.80	63	51	43	62	50	43	60	49	43	35
1.00	71	59	52	70	59	51	67	60	50	43
1.25	78	67	59	76	66	59	73	64	57	49
1.50	83	72	65	81	71	64	77	69	62	54
2.00	90	81	73	88	79	72	83	76	70	61
2.50	94	85	79	92	84	77	87	80	75	64
3.00	98	90	83	95	88	82	90	84	79	68
4.00	102	95	90	99	93	88	93	88	84	73
5.00	105	99	94	102	96	92	96	91	88	76
ROOM INDEX	UF(total)									Direct
According to DIN EN 13032-2 2004			Suspended				SHRNOM = 1.25			

C Range: 0 - 360DEG  
 C Interval: 15.0DEG  
 Test Speed: HIGH  
 Temperature:25.3DEG  
 Operators:wxh  
 Test Date:2019-05-15

$\gamma$  Range: 0 - 180DEG  
 $\gamma$  Interval: 1.0DEG  
 Test System:EVERFINE GO-2000B\_V1 SYSTEM V2.0.291  
 Humidity:65.0%  
 Test Distance:7.500m [K=1.0000]  
 Remarks:

ISOCANDELA DIAGRAM

Test:U:119.8V I:0.1327A P:15.69W PF:0.9870 Lamp Flux:1060.88x1 lm		
NAME: ASD-LSFDR-12D15CC-BZ	TYPE:	WEIGHT:
SPEC.:	DIM.:	SERIAL No.:
MFR.: ASD Lighting Corp	SUR.:	PROTECTION ANGLE:

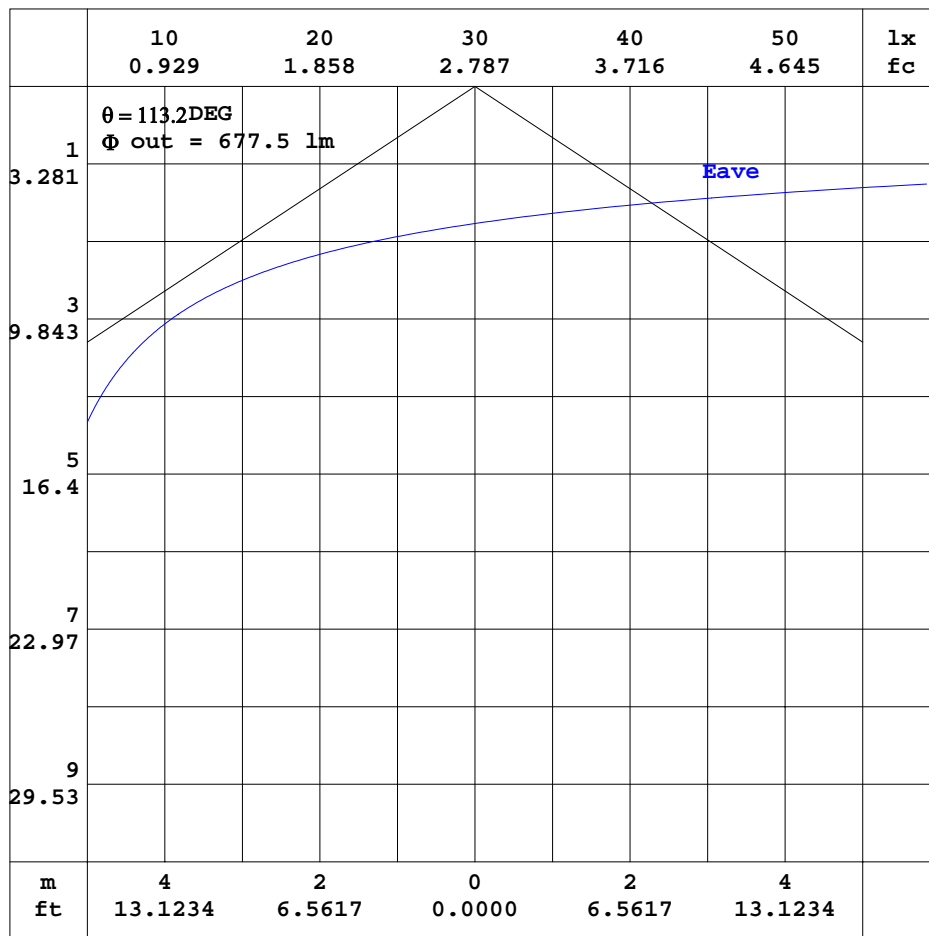


C Range: 0 - 360DEG  
 C Interval: 15.0DEG  
 Test Speed: HIGH  
 Temperature: 25.3DEG  
 Operators: wxh  
 Test Date: 2019-05-15

γ Range: 0 - 180DEG  
 γ Interval: 1.0DEG  
 Test System: EVERFINE GO-2000B\_V1 SYSTEM V2.0.291  
 Humidity: 65.0%  
 Test Distance: 7.500m [K=1.0000]  
 Remarks:

AAI CURVES

Test:U:119.8V I:0.1327A P:15.69W PF:0.9870 Lamp Flux:1060.88x1 lm		
NAME: ASD-LSFDR-12D15CC-BZ	TYPE:	WEIGHT:
SPEC.:	DIM.:	SERIAL No.:
MFR.: ASD Lighting Corp	SUR.:	PROTECTION ANGLE:



Note:The Curves indicate the illuminated area and the average illumination when the luminaire is at different distance.

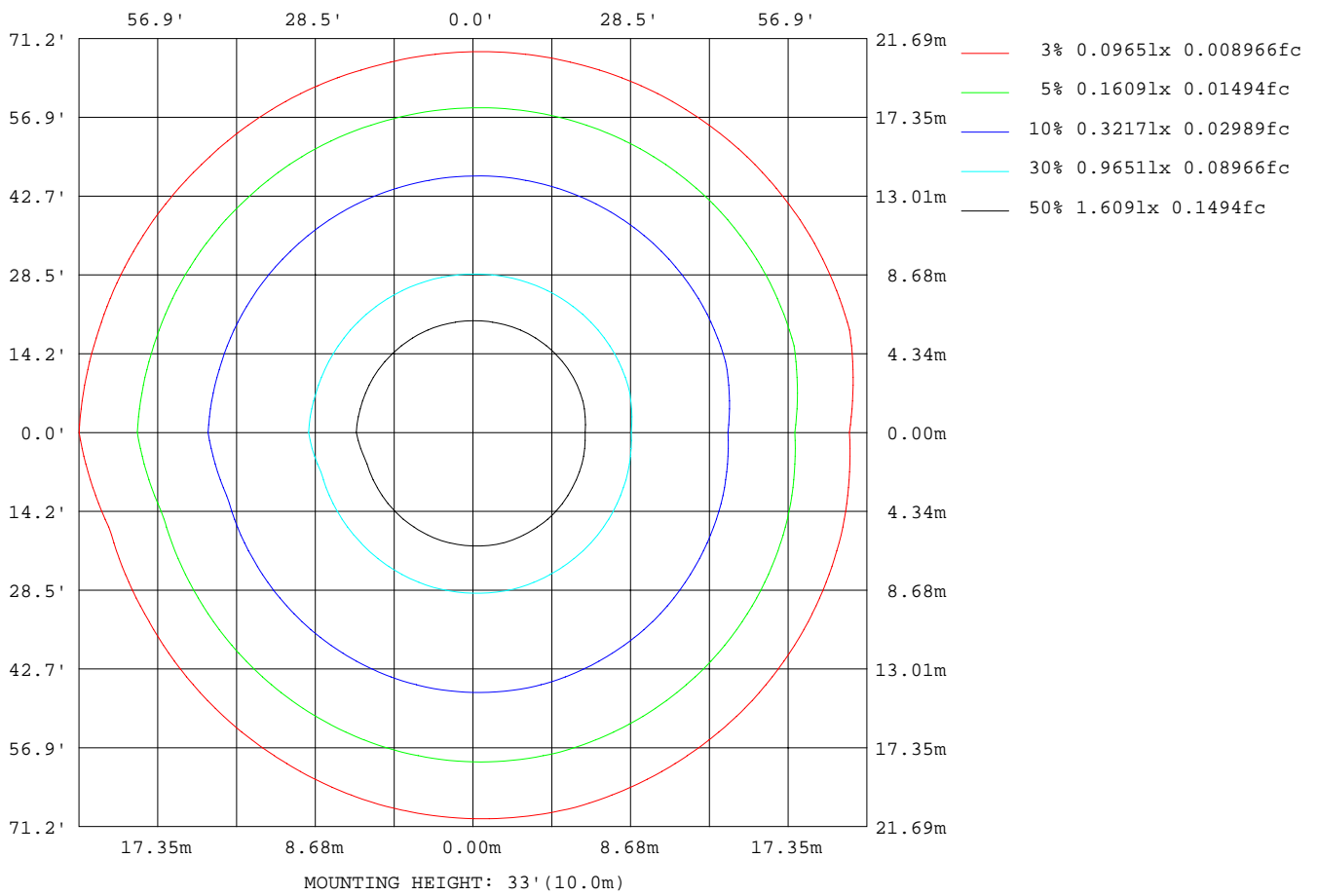
C Range: 0 - 360DEG  
 C Interval: 15.0DEG  
 Test Speed: HIGH  
 Temperature:25.3DEG  
 Operators:wxh  
 Test Date:2019-05-15

$\gamma$  Range: 0 - 180DEG  
 $\gamma$  Interval: 1.0DEG  
 Test System:EVERFINE GO-2000B\_V1 SYSTEM V2.0.291  
 Humidity:65.0%  
 Test Distance:7.500m [K=1.0000]  
 Remarks:



ISOLUX DIAGRAM

Test:U:119.8V I:0.1327A P:15.69W PF:0.9870 Lamp Flux:1060.88x1 lm		
NAME: ASD-LSFDR-12D15CC-BZ	TYPE:	WEIGHT:
SPEC.:	DIM.:	SERIAL No.:
MFR.: ASD Lighting Corp	SUR.:	PROTECTION ANGLE:



C Range: 0 - 360DEG  
 C Interval: 15.0DEG  
 Test Speed: HIGH  
 Temperature: 25.3DEG  
 Operators: wxh  
 Test Date: 2019-05-15

γ Range: 0 - 180DEG  
 γ Interval: 1.0DEG  
 Test System: EVERFINE GO-2000B\_V1 SYSTEM V2.0.291  
 Humidity: 65.0%  
 Test Distance: 7.500m [K=1.0000]  
 Remarks:

## LED Avg.L Report

Test:U:119.8V I:0.1327A P:15.69W PF:0.9870 Lamp Flux:1060.88x1 lm		
NAME: ASD-LSFDR-12D15CC-BZ	TYPE:	WEIGHT:
SPEC.:	DIM.:	SERIAL No.:
MFR.: ASD Lighting Corp	SUR.:	PROTECTION ANGLE:

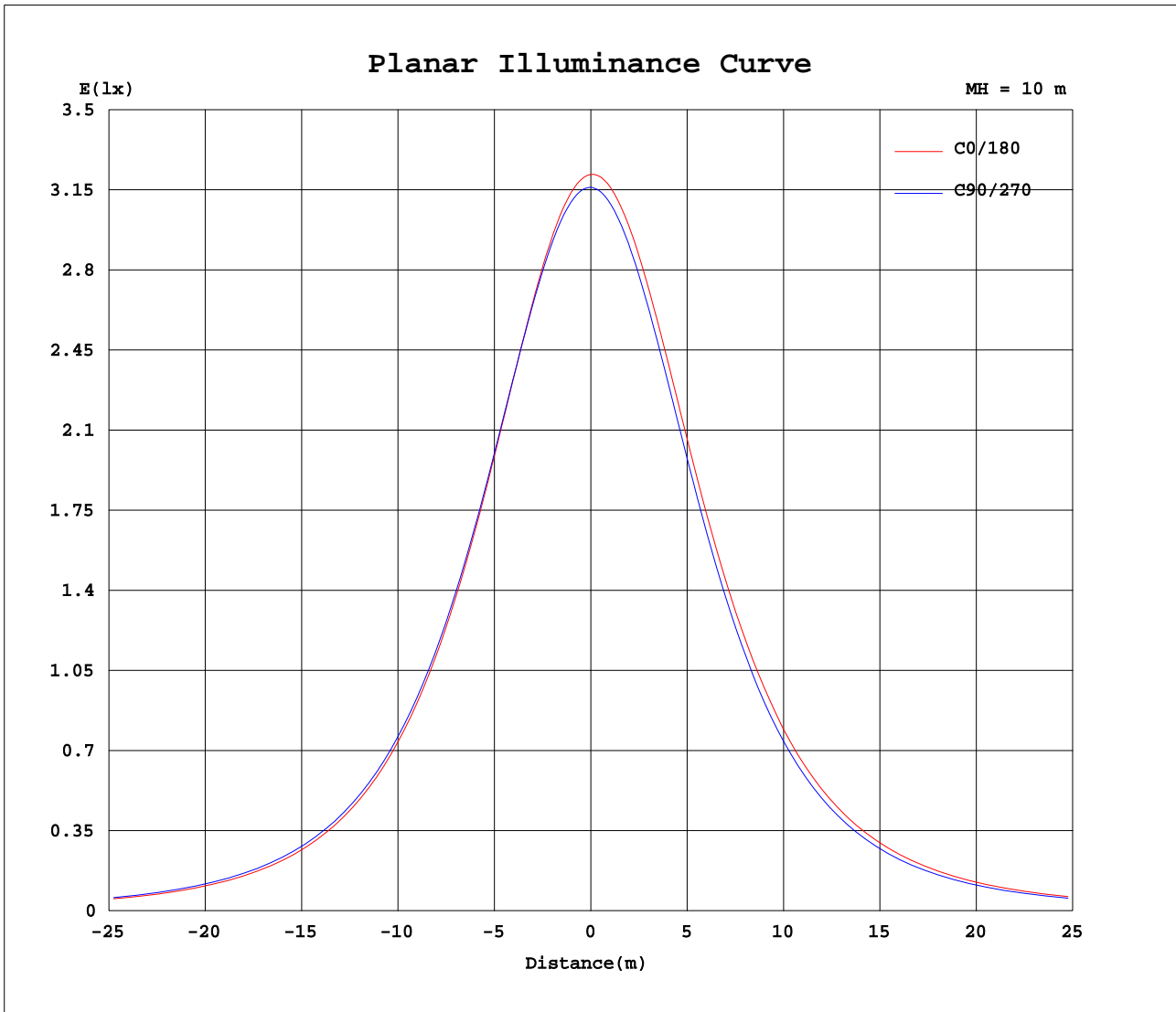
AvgL	cd/m2
L_0~180(65)av	2914
L_0~180(75)av	3060
L_0~180(85)av	5284
L_90~270(65)av	2872
L_90~270(75)av	3020
L_90~270(85)av	5237
L_45(65)av	2876
L_45(75)av	3017
L_45(85)av	5213

Standard: GB/T 29293-2012

C Range: 0 - 360DEG  
 C Interval: 15.0DEG  
 Test Speed: HIGH  
 Temperature:25.3DEG  
 Operators:wxh  
 Test Date:2019-05-15

$\gamma$  Range: 0 - 180DEG  
 $\gamma$  Interval: 1.0DEG  
 Test System:EVERFINE GO-2000B\_V1 SYSTEM V2.0.291  
 Humidity:65.0%  
 Test Distance:7.500m [K=1.0000]  
 Remarks:

Planar Illuminance Curve



C Range: 0 - 360DEG  
 C Interval: 15.0DEG  
 Test Speed: HIGH  
 Temperature: 25.3DEG  
 Operators: wxh  
 Test Date: 2019-05-15

$\gamma$  Range: 0 - 180DEG  
 $\gamma$  Interval: 1.0DEG  
 Test System: EVERFINE GO-2000B\_V1 SYSTEM V2.0.291  
 Humidity: 65.0%  
 Test Distance: 7.500m [K=1.0000]  
 Remarks:

LUMINOUS DISTRIBUTION INTENSITY DATA

Test:U:119.8V I:0.1327A P:15.69W PF:0.9870 Lamp Flux:1060.88x1 lm		
NAME: ASD-LSFDR-12D15CC-BZ	TYPE:	WEIGHT:
SPEC.:	DIM.:	SERIAL No.:
MFR.: ASD Lighting Corp	SUR.:	PROTECTION ANGLE:

Table--1

UNIT: cd

C(DEG) γ (DEG)	0	15	30	45	60	75	90	105	120	135	150	165	180	195	210	225	240	255	270
0	322	321	320	318	319	318	316	316	315	315	315	315	322	321	320	318	319	318	316
5	319	319	318	317	318	317	315	314	313	313	313	313	321	320	319	317	317	316	314
10	314	314	314	314	314	313	311	310	309	308	308	308	318	316	314	312	312	311	310
15	306	307	307	307	307	306	305	303	302	301	300	300	312	309	307	305	304	303	303
20	296	297	298	298	298	298	295	294	292	291	290	290	303	299	297	295	294	293	293
25	282	285	285	287	286	286	284	282	279	278	277	277	292	288	285	283	282	281	281
30	267	270	270	273	272	273	269	268	265	263	262	262	278	274	271	268	267	266	266
35	249	253	254	256	256	257	253	251	248	246	245	245	262	257	254	251	250	248	249
40	230	234	236	238	238	239	235	234	230	227	226	226	245	238	235	232	231	230	230
45	209	213	216	217	218	218	215	212	209	206	205	205	224	218	214	211	210	209	209
50	186	191	194	196	196	197	194	191	187	185	183	183	203	196	192	189	188	187	188
55	162	168	170	173	173	174	171	168	165	162	160	160	180	174	170	166	165	164	165
60	138	144	147	149	150	150	148	145	141	138	136	137	157	150	146	143	142	140	142
65	114	120	123	125	126	127	124	121	117	115	113	113	132	126	122	119	118	117	119
70	91.2	96.8	99.5	102	103	104	101	98.6	94.6	92.5	90.5	91.1	109	103	99.6	96.6	96.0	94.8	96.3
75	71.2	76.2	78.5	81.1	81.6	82.5	80.0	78.0	74.5	72.5	70.7	71.3	87.2	81.3	79.0	76.2	75.9	74.7	76.3
80	54.3	58.5	60.5	62.7	63.2	63.9	62.0	60.1	57.3	55.4	53.9	54.3	67.8	62.8	61.0	58.7	58.5	57.5	58.8
85	40.8	44.1	45.7	47.5	47.9	48.6	46.9	45.4	43.0	41.5	40.1	40.5	51.4	47.4	45.9	44.3	44.1	43.5	44.4
90	30.0	32.7	33.9	35.4	35.8	36.2	34.9	33.6	31.7	30.3	29.0	29.1	38.0	35.0	33.9	32.7	32.8	32.3	33.0
95	21.9	23.8	24.7	25.7	26.1	26.4	25.4	24.5	23.0	21.9	21.2	21.0	27.3	25.1	24.4	23.9	23.9	23.7	24.2
100	17.2	18.2	18.8	19.3	19.4	19.6	19.1	18.7	17.7	17.1	16.8	16.8	20.1	18.9	18.7	18.4	18.3	18.4	18.7
105	16.2	16.1	16.0	16.2	16.2	16.3	16.2	16.1	16.2	16.2	16.2	16.2	16.1	16.9	16.5	16.5	16.5	16.5	16.6
110	16.0	16.0	15.8	15.8	15.8	15.8	15.8	16.0	16.0	16.0	15.9	15.8	16.7	16.4	16.4	16.4	16.4	16.5	16.5
115	15.4	15.5	15.4	15.4	15.3	15.4	15.3	15.4	15.4	15.3	15.0	14.9	16.3	15.8	15.7	15.7	15.8	15.8	15.8
120	14.0	14.4	14.4	14.5	14.4	14.5	14.4	14.3	14.0	13.8	13.5	13.3	15.1	14.5	14.3	14.2	14.3	14.3	14.4
125	12.4	12.8	12.8	13.0	13.0	13.1	12.9	12.7	12.4	12.2	11.8	11.7	13.4	12.8	12.6	12.5	12.6	12.6	12.7
130	10.7	11.1	11.2	11.3	11.3	11.3	11.1	10.9	10.7	10.5	10.1	9.99	11.7	11.1	10.9	10.7	10.9	10.8	11.0
135	9.03	9.42	9.46	9.58	9.55	9.59	9.38	9.21	8.93	8.72	8.38	8.28	9.89	9.29	9.08	8.91	9.07	9.03	9.23
140	7.41	7.78	7.80	7.89	7.83	7.86	7.66	7.49	7.24	7.03	6.76	6.66	8.12	7.55	7.38	7.22	7.31	7.32	7.54
145	5.88	6.21	6.25	6.31	6.22	6.23	6.02	5.87	5.62	5.45	5.26	5.20	6.46	5.94	5.80	5.67	5.74	5.76	6.01
150	4.62	4.84	4.89	4.92	4.81	4.79	4.64	4.53	4.35	4.25	4.15	4.13	5.02	4.62	4.55	4.46	4.50	4.51	4.70
155	4.11	4.09	4.06	4.05	4.03	4.02	4.01	4.00	3.97	3.98	3.98	3.99	4.30	4.22	4.22	4.19	4.19	4.19	4.18
160	4.11	4.09	4.05	4.04	4.02	4.01	4.02	4.00	3.97	3.98	3.99	4.01	4.24	4.19	4.17	4.15	4.14	4.15	4.14
165	4.13	4.12	4.08	4.06	4.05	4.06	4.04	4.03	4.01	4.02	4.03	4.04	4.22	4.19	4.16	4.15	4.14	4.15	4.13
170	4.17	4.15	4.12	4.11	4.09	4.10	4.08	4.07	4.07	4.07	4.07	4.08	4.22	4.20	4.18	4.16	4.15	4.15	4.13
175	4.22	4.21	4.19	4.18	4.16	4.15	4.12	4.11	4.12	4.12	4.12	4.13	4.24	4.22	4.22	4.20	4.19	4.17	4.15
180	4.25	4.25	4.22	4.22	4.20	4.19	4.16	4.16	4.16	4.16	4.16	4.16	4.27	4.24	4.24	4.21	4.21	4.18	4.16

C Range: 0 - 360DEG  
 C Interval: 15.0DEG  
 Test Speed: HIGH  
 Temperature:25.3DEG  
 Operators:wxh  
 Test Date:2019-05-15

γ Range: 0 - 180DEG  
 γ Interval: 1.0DEG  
 Test System:EVERFINE GO-2000B\_V1 SYSTEM V2.0.291  
 Humidity:65.0%  
 Test Distance:7.500m [K=1.0000]  
 Remarks:

LUMINOUS DISTRIBUTION INTENSITY DATA

Test:U:119.8V I:0.1327A P:15.69W PF:0.9870 Lamp Flux:1060.88x1 lm		
NAME: ASD-LSFDR-12D15CC-BZ	TYPE:	WEIGHT:
SPEC.:	DIM.:	SERIAL No.:
MFR.: ASD Lighting Corp	SUR.:	PROTECTION ANGLE:

Table--2

UNIT: cd

C(DEG) γ (DEG)	285	300	315	330	345														
0	316	315	315	315	315														
5	314	314	315	315	315														
10	310	311	311	312	312														
15	303	304	305	306	306														
20	294	295	296	297	297														
25	281	283	285	286	286														
30	267	270	271	272	272														
35	250	253	255	257	256														
40	232	235	237	239	239														
45	212	215	218	219	219														
50	190	194	196	198	198														
55	168	171	174	176	176														
60	145	148	151	153	152														
65	121	124	127	129	129														
70	98.2	102	104	106	105														
75	77.7	80.8	82.5	84.3	83.6														
80	59.9	62.5	63.8	65.4	64.8														
85	45.3	47.2	48.4	49.6	49.1														
90	33.6	35.1	36.0	37.0	36.7														
95	24.5	25.6	26.2	26.9	26.8														
100	18.9	19.3	19.7	20.2	20.2														
105	16.6	16.6	16.7	16.9	16.7														
110	16.4	16.4	16.4	16.4	16.4														
115	15.8	15.9	15.9	16.0	16.0														
120	14.6	14.8	15.0	15.1	15.1														
125	12.9	13.2	13.4	13.6	13.5														
130	11.2	11.5	11.7	11.9	11.9														
135	9.45	9.81	10.0	10.2	10.2														
140	7.78	8.15	8.37	8.57	8.56														
145	6.23	6.58	6.80	7.02	7.00														
150	4.84	5.16	5.38	5.57	5.57														
155	4.15	4.18	4.31	4.45	4.43														
160	4.10	4.11	4.10	4.11	4.14														
165	4.10	4.09	4.08	4.10	4.12														
170	4.11	4.10	4.10	4.09	4.11														
175	4.14	4.14	4.14	4.14	4.14														
180	4.16	4.16	4.16	4.16	4.16														

C Range: 0 - 360DEG  
 C Interval: 15.0DEG  
 Test Speed: HIGH  
 Temperature:25.3DEG  
 Operators:wxh  
 Test Date:2019-05-15

γ Range: 0 - 180DEG  
 γ Interval: 1.0DEG  
 Test System:EVERFINE GO-2000B\_V1 SYSTEM V2.0.291  
 Humidity:65.0%  
 Test Distance:7.500m [K=1.0000]  
 Remarks: