



LED BARN LIGHT WITH PHOTOCELL

► **DESIGN & OPTIONS** - LED BARN LIGHT WITH PHOTOCELL has a durable die-cast aluminum body that is rust and corrosion proof, provides excellent heat dissipation and extends the life of the fixture. It is also equipped with a PC lens that ensures uniform light distribution with no glare. The built-in dusk-to-dawn photocell will automatically turn the fixture on/off depending on the time of day. It comes with 120-277V, a 4000K or 5000K color temperature and a BRONZE finish.

► **INSTALLATION** - These lights can be wall mounted directly to a junction box, or pole mounted using an mounting arm bracket (sold separately) in just a few easy steps. All necessary installation accessories are provided. Refer to install instructions for more information.

► **APPLICATION** - LED BARN LIGHT WITH PHOTOCELL is suitable for both indoor and outdoor applications such as: gardens, patios, driveways, garages, barns, loading areas, building exteriors, parking lots, streets or anywhere else lighting is needed. These lights are Wet location rated and can operate in temperatures between -4°+104°F (-20°+40°C), allowing them to be utilized in a wide variety of applications and climates.

► **ENERGY SAVING & EFFICIENCY** - This fixture provides a lumen output equal to MH/HPS and can cut your electric bill by up to 80% instantly. With a lifespan of 54,000 hours, these fixtures are made to last decades under normal operation! This fixture will save you a significant amount of money in its lifetime.

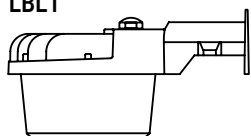
► **CERTIFICATION & WARRANTY** - Buy with confidence: ASD provides a 5-year warranty along with ETL and DLC Premium certifications to guarantee top quality products and safety!

Top US certifications allow participation in rebates; please check the rebate programs available in your state.

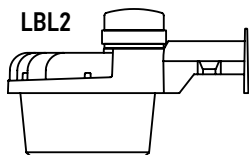
Catalog number	
Notes	
Type	



LBL1



LBL2



PRODUCT LEGEND:

Family	Modification	Watts	Dimmable	CCT	Option	Finish
ASD-LBL	1	XX	D	XX	PC	BZ
LED Barn Light	2	35 = 35 W 70 = 70 W	Dimmable	40 = 4,000 K 50 = 5,000 K	Photocell	Bronze

LED BARN LIGHT WITH PHOTOCELL:

Model	Watts	Voltage	Dimmable	CCT	Lumens	Photocell	Finish	Dimensions (LxWxH)
ASD-LBL1-35D40-PC-BZ	35 W	120-277 V	0-10 V	4,000 K	4,340 lm	Button-type Photocell	Bronze	10 1/2" x 7" x 5 5/8"
ASD-LBL1-35D50-PC-BZ	35 W	120-277 V	0-10 V	5,000 K	4,410 lm	Button-type Photocell	Bronze	10 1/2" x 7" x 5 5/8"
ASD-LBL1-70D40-PC-BZ	70 W	120-277 V	0-10 V	4,000 K	8,680 lm	Button-type Photocell	Bronze	10 1/2" x 7" x 5 5/8"
ASD-LBL1-70D50-PC-BZ	70 W	120-277 V	0-10 V	5,000 K	8,820 lm	Button-type Photocell	Bronze	10 1/2" x 7" x 5 5/8"
ASD-LBL2-70D40-PC-BZ	70 W	120-277 V	0-10 V	4,000 K	8,680 lm	3-pin Photocell	Bronze	10 1/2" x 7" x 5 5/8"
ASD-LBL2-70D50-PC-BZ	70 W	120-277 V	0-10 V	5,000 K	8,820 lm	3-pin Photocell	Bronze	10 1/2" x 7" x 5 5/8"

For most up-to-date spec sheets please refer to asd-lighting.com

ASD LIGHTING CORP

E-mail: orders@asd-lighting.com | Web site: www.asd-lighting.com





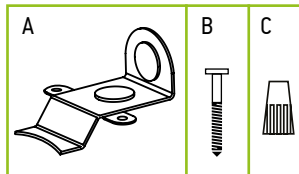
LED BARN LIGHT WITH PHOTOCELL

PRODUCT SPECIFICATIONS:

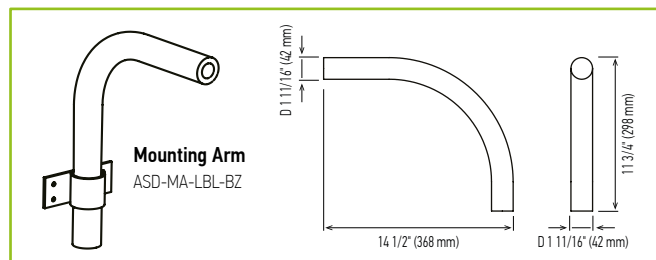
Construction & Materials					
Housing	Die Cast Aluminum				
Finish	Bronze				
Weight	ASD-LBL1-35D40-PC-BZ	3.1 lb (1.4 kg)			
	ASD-LBL1-35D50-PC-BZ				
	ASD-LBL1-70D40-PC-BZ				
	ASD-LBL1-70D50-PC-BZ	3.5 lb (1.6 kg)			
	ASD-LBL2-70D40-PC-BZ				
	ASD-LBL2-70D50-PC-BZ				
Environmental System					
Work Environment	Suitable for Wet Locations, IP54				
Operating Temperature	-4°F to 104°F / -20°C to 40°C				
L-70 Life	R > 54,000 hrs; C > 130,000 hrs				
Optical System					
Luminous Flux	ASD-LBL1-35D40-PC-BZ	4,340 lm			
	ASD-LBL1-35D50-PC-BZ	4,410 lm			
	ASD-LBL1-70D40-PC-BZ	8,680 lm			
	ASD-LBL1-70D50-PC-BZ	8,820 lm			
	ASD-LBL2-70D40-PC-BZ	8,680 lm			
	ASD-LBL2-70D50-PC-BZ	8,820 lm			
Color Temperature	4,000 K; 5,000 K				
CRI	> 70				
Electrical System					
Input Voltage	120-277 V				
Max input current	ASD-LBL1-35D40-PC-BZ	0.3 A			
	ASD-LBL1-35D50-PC-BZ				
	ASD-LBL1-70D40-PC-BZ				
	ASD-LBL1-70D50-PC-BZ	0.6 A			
	ASD-LBL2-70D40-PC-BZ				
	ASD-LBL2-70D50-PC-BZ				
Inrush current (Action time)	ASD-LBL1-35D40-PC-BZ	8.5 A (0.11 S)			
	ASD-LBL1-35D50-PC-BZ				
	ASD-LBL1-70D40-PC-BZ	8.7 A (0.11 S)			
	ASD-LBL1-70D50-PC-BZ				
	ASD-LBL2-70D40-PC-BZ				
	ASD-LBL2-70D50-PC-BZ				
AC input range	min 120 V max 277 V				
Off State Power	0 W				
Surge protection	2.5 kV				
Power Consumption	ASD-LBL1-35D40-PC-BZ	35 W			
	ASD-LBL1-35D50-PC-BZ				
	ASD-LBL1-70D40-PC-BZ				
	ASD-LBL1-70D50-PC-BZ	70 W			
	ASD-LBL2-70D40-PC-BZ				
	ASD-LBL2-70D50-PC-BZ				
Power Factor	> 0.9				
Output voltage	144 V				
Driver output current	ASD-LBL1-35D40-PC-BZ	180 mA			
	ASD-LBL1-35D50-PC-BZ				
	ASD-LBL1-70D40-PC-BZ	360 mA			
	ASD-LBL1-70D50-PC-BZ				
	ASD-LBL2-70D40-PC-BZ				
	ASD-LBL2-70D50-PC-BZ				
Dimming compatible controls					
Brand	Lutron	Leviton			
Models	MACL-153M-WH	DVLV-603P-IV	CTCL-153PDH-WH	6674	IPL06
	S-600PR-WH	4X603	SLV-600P-WH	6633-P	IF4205
	DVW-603P6H-WH	DVCL-153P-WH	DV-600P	6683	6672
Regular and Voluntary Certifications					
5-year limited warranty					
cETLus listed					
DesignLights Consortium (DLC) listed (Classification: Premium series)					
Main: Outdoor Luminaires; General Application: Low Output;					
Primary Use: Outdoor Pole/Arm-Mounted Area and Roadway Luminaires					

PACKAGE CONTENTS:

Description	Q-ty
LED Barn Light with photocell	1
Cover plate (A)	1
Mounting Screws (B)	3
Wire Nuts (C)	3
Box	1
Cut sheet	2



ACCESSORIES (sold separately):



INSTALLATION GUIDE

IMPORTANT SAFETY INFORMATION:

Please read all the instructions below before installation.

- ▶ Make sure that the supply voltage corresponds to the rated product voltage.
- ▶ The product must be installed by a qualified electrician in accordance with the National Electrical Code and corresponding local codes.
- ▶ If the product is damaged, do not use it.

⚠ WARNING

RISK OF PERSONAL INJURY – READ and follow all WARNINGS and installation instructions.

Keep or give to the owner for future reference.

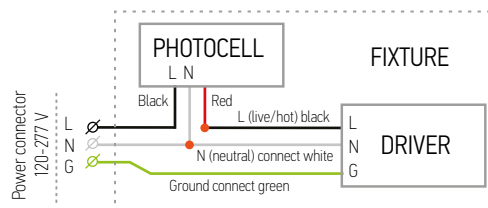
Risk of cuts: Wear gloves to prevent cuts or abrasions when removing from carton, handling, installing, and maintaining this product.

Risk of electric shock: This product must be installed in accordance with the applicable installation code by a person familiar with the construction and operation of the product and the hazards involved.

Risk of Fire: Minimum 194°F supply conductors. Consult a qualified electrician to ensure correct branch circuit conductor.

ASD® assumes no responsibility for claims arising out of improper or careless Installation or handling of this product.

ELECTRICAL SCHEMATIC DIAGRAM:



PHOTOCELL SETTINGS:



The fixtures with a built-in photocell automatically turn off during daylight hours.

- The light is always ON when luminance is < 10-20 lux (night time).
- The light is always OFF when luminance is > 30-80 lux (day time).

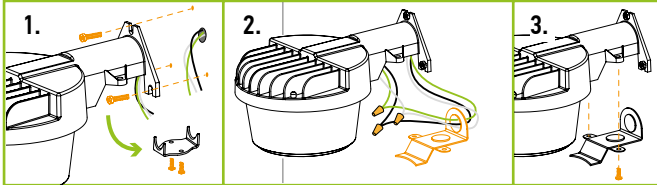
For most up-to-date spec sheets please refer to asd-lighting.com



LED BARN LIGHT WITH PHOTOCELL

WALL INSTALLATION:

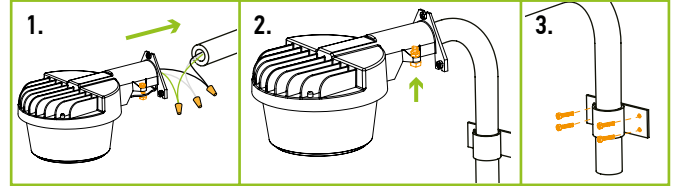
1. Take off default cover plate from bottom of arm. Use expansion bolts to secure the fixture on mounting surface.
2. Pass the wires through the cover plate. Connect the wires: Black to Black, White to White, Green to Green using the wire nuts.
3. Install the new cover plate with screws.



ARM INSTALLATION

ASD-MA-LBL-BZ sold separately:

1. Run extension wiring through the arm. Connect the wires: Black to Black, White to White, Green to Green using the wire nuts.
2. Secure clamp onto the base of the arm, as shown below. Secure it with bolt and nut.
3. Install the clamp with arm on the wall using four screws.



ORDERING INFORMATION

LED BARN LIGHT WITH PHOTOCELL:

Model	UPC	Pcs. per Carton	Carton Size	Carton Weight	GTIN 14
ASD-LBL1-35D40-PC-BZ	810050734042	2	15.7" x 12.4" x 6.9"	7.7 lb	10810050734049
ASD-LBL1-35D50-PC-BZ	810050734059	2	15.7" x 12.4" x 6.9"	7.7 lb	10810050734056
ASD-LBL1-70D40-PC-BZ	810050734066	2	15.7" x 12.4" x 6.9"	7.7 lb	10810050734063
ASD-LBL1-70D50-PC-BZ	810050734073	2	15.7" x 12.4" x 6.9"	7.7 lb	10810050734070
ASD-LBL2-70D40-PC-BZ	810050734080	2	15.7" x 12.4" x 6.9"	8.6 lb	10810050734087
ASD-LBL2-70D50-PC-BZ	810050734097	2	15.7" x 12.4" x 6.9"	8.6 lb	10810050734094

ACCESSORIES:

Model	Name	Weight	Dimensions	UPC	Pcs. per Carton	Carton Size	Carton Weight	GTIN 14 for Carton
ASD-MA-LBL-BZ	ASD 1 3/4 inch Mounting Arm Bronze	1.8 lb	14 3/4" x 15 8" x 11 5/8"	810050734103	6	19.5" x 11.4" x 7.5"	13.9 lb	10810050734100

For most up-to-date spec sheets please refer to asd-lighting.com

ASD LIGHTING CORP

E-mail: orders@asd-lighting.com | Web site: www.asd-lighting.com

