



# LED TRIMLESS DOWNLIGHT

► **DESIGN** - LED TRIMLESS DOWNLIGHT has a twist-lock design and includes a mud frame to be plastered over, giving it a smooth trimless look. It features a durable airtight aluminum housing, multifaceted specular reflector with a 38° beam angle, and anti-glare PC lens.

► **VARIETY** - The fixture comes in round and square shapes in 1-inch, 2-inch, 3-inch, 3.5-inch, 4-inch and 6-inch with voltage 120V or 120-277V and available in White or Black finishes.

► **COLOR SELECTABLE** - You can choose either a 2,700K soft white, 3,000K warm white, 3,500K neutral white, 4,000K cool white, or 5,000K daylight color temperature.

► **INSTALLATION** - This fixture is IC rated so there is no can or any other housing required. It is also Wet Locations rated, making it perfect for any spaces with humidity requirements. Perfect for retail, hospitality, or any other commercial space with a high ceiling.

► **ADVANTAGES** - With a lifespan of 50,000 hours, these fixtures are made to last decades under normal operation! ASD provides a 5-year limited warranty along with ETL and Energy Star certifications to guarantee top quality products and safety!

Catalog number	
Notes	
Type	



Finish:  White  Black

Model	Size	Type	Watts	Voltage	Dimmable	Lumens	CCT	Trim color	Dimensions
<b>CD-T</b>									
ASD-CD-TR-1D7AC-WH	1 inch	Round	7W	120 V	TRIAC	up to 498 lm	5CCT (2,700/3,000/3,500/4,000/5,000 K)	White	3-3/4" x 3-5/8"
ASD-CD-TR-2D8AC-WH	2 inch	Round	8W	120 V	TRIAC	up to 643 lm	5CCT (2,700/3,000/3,500/4,000/5,000 K)	White	3-9/16" x 2-3/8"
ASD-CD-TR-2D15AC-WH	2 inch	Round	15W	120 V	TRIAC	up to 1,029 lm	5CCT (2,700/3,000/3,500/4,000/5,000 K)	White	3-9/16" x 5-1/16"
ASD-CD-TR-MV-2D15AC-WH	2 inch	Round	15W	120-277 V	0-10 V	up to 1,077 lm	5CCT (2,700/3,000/3,500/4,000/5,000 K)	White	3-9/16" x 4-15/16"
ASD-CD-TR-2D15WH-4P	2 inch	Round	15W	120 V	TRIAC	up to 1,029 lm	5CCT (2,700/3,000/3,500/4,000/5,000 K)	White	3-9/16" x 5-1/16"
ASD-CD-TR-2D15AC-BK	2 inch	Round	15W	120 V	TRIAC	up to 1,029 lm	5CCT (2,700/3,000/3,500/4,000/5,000 K)	Black	3-9/16" x 5-1/16"
ASD-CD-TS-2D8AC-WH	2 inch	Square	8W	120 V	TRIAC	up to 636 lm	5CCT (2,700/3,000/3,500/4,000/5,000 K)	White	4-1/8" x 4-1/8" x 3-3/8"
ASD-CD-TS-2D15AC-WH	2 inch	Square	15W	120 V	TRIAC	up to 1,026 lm	5CCT (2,700/3,000/3,500/4,000/5,000 K)	White	4-1/8" x 4-1/8" x 5-9/16"
ASD-CD-TS-2D15AC-BK	2 inch	Square	15W	120 V	TRIAC	up to 1,026 lm	5CCT (2,700/3,000/3,500/4,000/5,000 K)	Black	4-1/8" x 4-1/8" x 5-9/16"
ASD-CD-TR-3D15AC-WH	3 inch	Round	15W	120 V	TRIAC	up to 1,226 lm	5CCT (2,700/3,000/3,500/4,000/5,000 K)	White	4-15/16" x 4-7/16"
ASD-CD-TS-3D15AC-WH	3 inch	Square	15W	120 V	TRIAC	up to 1,243 lm	5CCT (2,700/3,000/3,500/4,000/5,000 K)	White	5-1/2" x 5-1/2" x 4-15/16"
ASD-CD-TR-3D12AC-WH	3.5 inch	Round	12W	120 V	TRIAC	up to 933 lm	5CCT (2,700/3,000/3,500/4,000/5,000 K)	White	5-7/8" x 2-15/16"
ASD-CD-TR-3D12WH-4P	3.5 inch	Round	12W	120 V	TRIAC	up to 933 lm	5CCT (2,700/3,000/3,500/4,000/5,000 K)	White	5-7/8" x 2-15/16"
ASD-CD-TR-3D12AC-BK	3.5 inch	Round	12W	120 V	TRIAC	up to 933 lm	5CCT (2,700/3,000/3,500/4,000/5,000 K)	Black	5-7/8" x 2-15/16"
ASD-CD-TS-3D12AC-WH	3.5 inch	Square	12W	120 V	TRIAC	up to 953 lm	5CCT (2,700/3,000/3,500/4,000/5,000 K)	White	5-11/16" x 5-11/16" x 3-1/16"
ASD-CD-TS-3D12AC-BK	3.5 inch	Square	12W	120 V	TRIAC	up to 953 lm	5CCT (2,700/3,000/3,500/4,000/5,000 K)	Black	5-11/16" x 5-11/16" x 3-1/16"
ASD-CD-TR-4D15AC-WH	4 inch	Round	15W	120 V	TRIAC	up to 1,055 lm	5CCT (2,700/3,000/3,500/4,000/5,000 K)	White	5-7/8" x 3-1/8"
ASD-CD-TR-4D15WH-4P	4 inch	Round	15W	120 V	TRIAC	up to 1,055 lm	5CCT (2,700/3,000/3,500/4,000/5,000 K)	White	5-7/8" x 3-1/8"
ASD-CD-TR-MV-4D15AC-WH	4 inch	Round	15W	120-277 V	0-10 V	up to 1,082 lm	5CCT (2,700/3,000/3,500/4,000/5,000 K)	White	5-7/8" x 3-1/8"
ASD-CD-TR-4D15AC-BK	4 inch	Round	15W	120 V	TRIAC	up to 1,055 lm	5CCT (2,700/3,000/3,500/4,000/5,000 K)	Black	5-7/8" x 3-1/8"
ASD-CD-TS-4D15AC-WH	4 inch	Square	15W	120 V	TRIAC	up to 1,090 lm	5CCT (2,700/3,000/3,500/4,000/5,000 K)	White	6-5/16" x 6-5/16" x 4"
ASD-CD-TS-4D15AC-BK	4 inch	Square	15W	120 V	TRIAC	up to 1,090 lm	5CCT (2,700/3,000/3,500/4,000/5,000 K)	Black	6-5/16" x 6-5/16" x 4"
ASD-CD-TR-6D24AC-WH	6 inch	Round	24W	120 V	TRIAC	up to 2,075 lm	5CCT (2,700/3,000/3,500/4,000/5,000 K)	White	8-11/16" x 3-9/16"
ASD-CD-TR-MV-6D24AC-WH	6 inch	Round	24W	120-277 V	0-10 V	up to 2,023 lm	5CCT (2,700/3,000/3,500/4,000/5,000 K)	White	8-11/16" x 3-5/8"
ASD-CD-TR-6D24AC-BK	6 inch	Round	24W	120 V	TRIAC	up to 2,075 lm	5CCT (2,700/3,000/3,500/4,000/5,000 K)	Black	8-11/16" x 3-9/16"
ASD-CD-TS-6D24AC-WH	6 inch	Square	24W	120 V	TRIAC	up to 2,038 lm	5CCT (2,700/3,000/3,500/4,000/5,000 K)	White	8-1/8" x 8-1/8" x 3-11/16"
ASD-CD-TS-6D24AC-BK	6 inch	Square	24W	120 V	TRIAC	up to 2,038 lm	5CCT (2,700/3,000/3,500/4,000/5,000 K)	Black	8-1/8" x 8-1/8" x 3-11/16"
<b>CD-TG GIMBAL</b>									
ASD-CD-TG-2D8AC-WH	2 inch	Round	8W	120 V	TRIAC	up to 717 lm	5CCT (2,700/3,000/3,500/4,000/5,000 K)	White	4-1/16" x 2-3/8"
ASD-CD-TGR-2D8AC-BK	2 inch	Round	8W	120 V	TRIAC	up to 717 lm	5CCT (2,700/3,000/3,500/4,000/5,000 K)	Black	4-1/16" x 2-11/16"
ASD-CD-TGS-2D8AC-WH	2 inch	Square	8W	120 V	TRIAC	up to 672 lm	5CCT (2,700/3,000/3,500/4,000/5,000 K)	White	5-1/8" x 5-1/8" x 2-3/4"
ASD-CD-TGS-2D8AC-BK	2 inch	Square	8W	120 V	TRIAC	up to 672 lm	5CCT (2,700/3,000/3,500/4,000/5,000 K)	Black	5-1/8" x 5-1/8" x 2-3/4"
ASD-CD-TGR-3D12AC-WH	3 inch	Round	12W	120 V	TRIAC	up to 1,043 lm	5CCT (2,700/3,000/3,500/4,000/5,000 K)	White	4-1/16" x 3-9/16"
ASD-CD-TGR-4D17AC-WH	4 inch	Round	17W	120 V	TRIAC	up to 1,623 lm	5CCT (2,700/3,000/3,500/4,000/5,000 K)	White	6-11/16" x 4"

For detailed luminous flux information please refer to Annex 1, page 6.

For most up-to-date spec sheets please refer to [asd-lighting.com](http://asd-lighting.com)

**ASD LIGHTING CORP**

E-mail: [orders@asd-lighting.com](mailto:orders@asd-lighting.com) | Web site: [www.asd-lighting.com](http://www.asd-lighting.com)





# LED TRIMLESS DOWNLIGHT

## PRODUCT SPECIFICATIONS:

Construction & Materials						
Housing	Aluminum					
Lens	PC					
Finish	White, Black					
Weight	ASD-CD-TR-1D7AC-WH	0.9 lbs (0.4 kg)	ASD-CD-TR-3D12AC-WH	1.1 lbs (0.5 kg)	ASD-CD-TR-6D24AC-WH	2.5 lbs (1.1 kg)
	ASD-CD-TR-2D8AC-WH	0.7 lbs (0.3 kg)	ASD-CD-TR-3D12WH-4P	4.5 lbs (2 kg)	ASD-CD-TR-MV-6D24AC-WH	
	ASD-CD-TR-2D15AC-WH	1.2 lbs (0.5 kg)	ASD-CD-TR-3D12AC-BK	1.1 lbs (0.5 kg)	ASD-CD-TR-6D24AC-BK	2.6 lbs (1.2 kg)
	ASD-CD-TR-MV-2D15AC-WH		ASD-CD-TS-3D12AC-WH	1.2 lbs (0.5 kg)	ASD-CD-TS-6D24AC-WH	
	ASD-CD-TR-2D15WH-4P	5 lbs (2.2 kg)	ASD-CD-TS-3D12AC-BK		0.8 lbs (0.4 kg)	ASD-CD-TS-6D24AC-BK
	ASD-CD-TR-2D15AC-BK	1.2 lbs (0.5 kg)	ASD-CD-TR-4D15AC-WH	0.8 lbs (0.4 kg)		ASD-CD-TG-2D8AC-WH
	ASD-CD-TS-2D8AC-WH	0.9 lbs (0.4 kg)	ASD-CD-TR-4D15WH-4P	3.3 lbs (1.5 kg)	ASD-CD-TGR-2D8AC-BK	0.9 lbs (0.4 kg)
	ASD-CD-TS-2D15AC-WH	1.2 lbs (0.5 kg)	ASD-CD-TR-MV-4D15AC-WH	0.8 lbs (0.4 kg)	ASD-CD-TGS-2D8AC-WH	
	ASD-CD-TS-2D15AC-BK		ASD-CD-TR-4D15AC-BK		ASD-CD-TGS-2D8AC-BK	1.7 lbs (0.8 kg)
	ASD-CD-TR-3D15AC-WH	1.6 lbs (0.7 kg)	ASD-CD-TS-4D15AC-WH	1.5 lbs (0.7 kg)	ASD-CD-TGR-3D12AC-WH	
ASD-CD-TS-3D15AC-WH	1.7 lbs (0.8 kg)	ASD-CD-TS-4D15AC-BK	ASD-CD-TGR-4D17AC-WH		2.4 lbs (1.1 kg)	
Environmental system						
Work environment	Suitable for Wet Locations					
Operating temperature	-4°F to 104°F (-20°C to 40°C)					
L-70 Life	> 50,000 hrs					
Optical system						
Color temperature	5CCT switch (2,700/3,000/3,500/4,000/5,000 K), 5,000 K by default					
CRI	> 90					
Electrical system						
Input voltage	Regular voltage: 120 V		Regular multi voltage: 120-277 V			
Max input current	ASD-CD-TR-1D7AC-WH	0.7 A	ASD-CD-TR-3D12AC-WH	0.12 A	ASD-CD-TR-6D24AC-WH	0.2 A
	ASD-CD-TR-2D8AC-WH	0.1 A	ASD-CD-TR-3D12WH-4P		ASD-CD-TR-MV-6D24AC-WH	
	ASD-CD-TR-2D15AC-WH	0.15 A	ASD-CD-TR-3D12AC-BK		ASD-CD-TR-6D24AC-BK	
	ASD-CD-TR-MV-2D15AC-WH	0.12 A	ASD-CD-TS-3D12AC-WH		ASD-CD-TS-6D24AC-WH	
	ASD-CD-TR-2D15WH-4P	0.15 A	ASD-CD-TS-3D12AC-BK	0.15 A	ASD-CD-TS-6D24AC-BK	0.1 A
	ASD-CD-TR-2D15AC-BK		ASD-CD-TR-4D15AC-WH		ASD-CD-TG-2D8AC-WH	
	ASD-CD-TS-2D8AC-WH	0.1 A	ASD-CD-TR-4D15WH-4P	0.14 A	ASD-CD-TGR-2D8AC-BK	0.1 A
	ASD-CD-TS-2D15AC-WH		ASD-CD-TR-MV-4D15AC-WH		ASD-CD-TGS-2D8AC-WH	
	ASD-CD-TS-2D15AC-BK	0.15 A	ASD-CD-TR-4D15AC-BK	0.15 A	ASD-CD-TGS-2D8AC-BK	0.12 A
	ASD-CD-TR-3D15AC-WH		ASD-CD-TS-4D15AC-WH		ASD-CD-TGR-3D12AC-WH	
ASD-CD-TS-3D15AC-WH	ASD-CD-TS-4D15AC-BK		ASD-CD-TGR-4D17AC-WH		0.16 A	
Inrush current (Action time)	ASD-CD-TR-1D7AC-WH	4 A (0.5 S)	ASD-CD-TR-3D12AC-WH	5 A (0.5 S)	ASD-CD-TR-6D24AC-WH	15 A (0.5 S)
	ASD-CD-TR-2D8AC-WH		ASD-CD-TR-3D12WH-4P		ASD-CD-TR-MV-6D24AC-WH	
	ASD-CD-TR-2D15AC-WH	6 A (0.5 S)	ASD-CD-TR-3D12AC-BK	6 A (0.5 S)	ASD-CD-TR-6D24AC-BK	4 A (0.5 S)
	ASD-CD-TR-MV-2D15AC-WH	10 A (0.5 S)	ASD-CD-TS-3D12AC-WH		ASD-CD-TS-6D24AC-WH	
	ASD-CD-TR-2D15WH-4P	6 A (0.5 S)	ASD-CD-TS-3D12AC-BK	6 A (0.5 S)	ASD-CD-TS-6D24AC-BK	4 A (0.5 S)
	ASD-CD-TR-2D15AC-BK		ASD-CD-TR-4D15AC-WH		ASD-CD-TG-2D8AC-WH	
	ASD-CD-TS-2D8AC-WH	4 A (0.5 S)	ASD-CD-TR-4D15WH-4P	10 A (0.5 S)	ASD-CD-TGR-2D8AC-BK	4 A (0.5 S)
	ASD-CD-TS-2D15AC-WH	6 A (0.5 S)	ASD-CD-TR-MV-4D15AC-WH		ASD-CD-TGS-2D8AC-WH	
	ASD-CD-TS-2D15AC-BK		ASD-CD-TR-4D15AC-BK	ASD-CD-TGS-2D8AC-BK		
	ASD-CD-TR-3D15AC-WH		ASD-CD-TS-4D15AC-WH	ASD-CD-TGR-3D12AC-WH		
ASD-CD-TS-3D15AC-WH	ASD-CD-TS-4D15AC-BK		ASD-CD-TGR-4D17AC-WH			
Off state power	0W					
Power consumption	ASD-CD-TR-1D7AC-WH	7W	ASD-CD-TR-3D12AC-WH	12W	ASD-CD-TR-6D24AC-WH	24W
	ASD-CD-TR-2D8AC-WH	8W	ASD-CD-TR-3D12WH-4P		ASD-CD-TR-MV-6D24AC-WH	
	ASD-CD-TR-2D15AC-WH	15W	ASD-CD-TR-3D12AC-BK		ASD-CD-TR-6D24AC-BK	
	ASD-CD-TR-MV-2D15AC-WH		ASD-CD-TS-3D12AC-WH		ASD-CD-TS-6D24AC-WH	
	ASD-CD-TR-2D15WH-4P	8W	ASD-CD-TS-3D12AC-BK	15W	ASD-CD-TS-6D24AC-BK	8W
	ASD-CD-TR-2D15AC-BK		ASD-CD-TR-4D15AC-WH		ASD-CD-TG-2D8AC-WH	
	ASD-CD-TS-2D8AC-WH	15W	ASD-CD-TR-4D15WH-4P	15W	ASD-CD-TGR-2D8AC-BK	12W
	ASD-CD-TS-2D15AC-WH		ASD-CD-TR-MV-4D15AC-WH		ASD-CD-TGS-2D8AC-WH	
	ASD-CD-TS-2D15AC-BK		ASD-CD-TR-4D15AC-BK		ASD-CD-TGS-2D8AC-BK	
	ASD-CD-TR-3D15AC-WH		ASD-CD-TS-4D15AC-WH		ASD-CD-TGR-3D12AC-WH	
ASD-CD-TS-3D15AC-WH		ASD-CD-TS-4D15AC-BK		ASD-CD-TGR-4D17AC-WH	17W	
Power factor	> 0.9					
Output voltage	36 V					

For most up-to-date spec sheets please refer to [asd-lighting.com](http://asd-lighting.com)

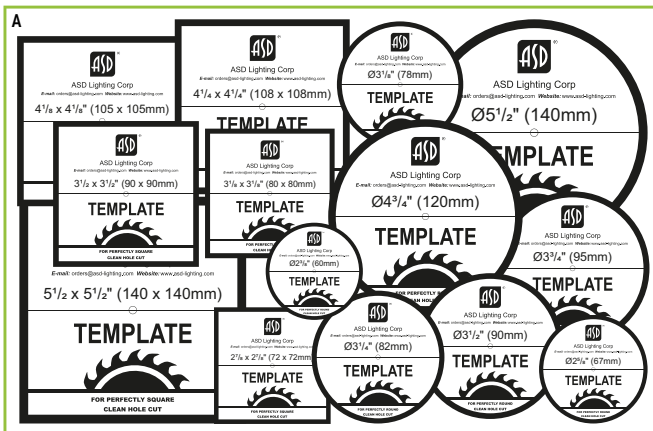


# LED TRIMLESS DOWNLIGHT

Electrical system									
Max output current	ASD-CD-TR-1D7AC-WH	1.6 A	ASD-CD-TR-3D12AC-WH	0.27 A	ASD-CD-TR-6D24AC-WH	0.56 A			
	ASD-CD-TR-2D8AC-WH	0.18 A	ASD-CD-TR-3D12WH-4P		ASD-CD-TR-MV-6D24AC-WH				
	ASD-CD-TR-2D15AC-WH	0.32 A	ASD-CD-TR-3D12AC-BK		ASD-CD-TR-6D24AC-BK				
	ASD-CD-TR-MV-2D15AC-WH		ASD-CD-TS-3D12AC-WH		ASD-CD-TS-6D24AC-WH				
	ASD-CD-TR-2D15WH-4P		ASD-CD-TS-3D12AC-BK		ASD-CD-TS-6D24AC-BK				
	ASD-CD-TR-2D15AC-BK	0.18 A	ASD-CD-TR-4D15AC-WH		0.34 A		ASD-CD-TG-2D8AC-WH	0.18 A	
	ASD-CD-TS-2D8AC-WH		ASD-CD-TR-4D15WH-4P				ASD-CD-TGR-2D8AC-BK		
	ASD-CD-TS-2D15AC-WH	0.32 A	ASD-CD-TR-MV-4D15AC-WH		0.34 A		ASD-CD-TGS-2D8AC-WH	0.27 A	
	ASD-CD-TS-2D15AC-BK		ASD-CD-TR-4D15AC-BK				ASD-CD-TGS-2D8AC-BK		
	ASD-CD-TR-3D15AC-WH	0.34 A	ASD-CD-TS-4D15AC-WH		0.34 A		ASD-CD-TGR-3D12AC-WH	0.4 A	
ASD-CD-TS-3D15AC-WH	ASD-CD-TS-4D15AC-BK		ASD-CD-TGR-4D17AC-WH						
Surge protection DM/CM	2.5 kV / 2.5 kV								
Dimming range									
10-100%									
Dimming compatible controls for TRIAC									
Brand	Lutron			Leviton			Cooper		
Models	DMD-LE3-D	DVCL-153P	PD-6WCL	IPL06-10Z	DSL06	6672	6621		
	SFTU-5A3P	CTCL-153P	DV-600P				SI06P		
Dimming compatible controls for 0-10 V									
Brand	Lutron			Philips	Leviton	Lightolier controls			
Models	Nova T - NTFV	Divia - NFTV	Divia - DVTV	Sunrise - SR1200ZTUNV	Illumitech - IP7	ZP600FAM120	Watt stopper DCLV1		
Regular and voluntary certifications									
5-year limited warranty	cETLus certified 5003560								

## PACKAGE CONTENTS:

Description	Quantity
LED Trimless Downlight	1 (4 for 4P)
Template for 2, 3, 3.5, 4 or 6 inch (A)	1
Box	1



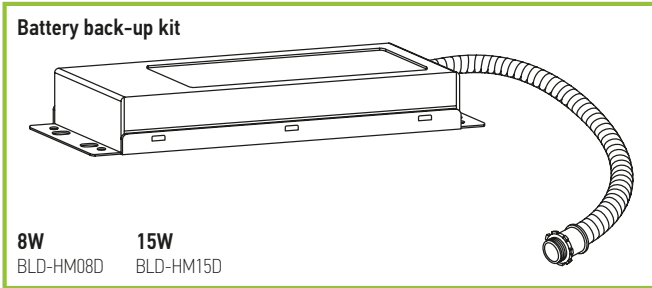
Model	Template
ASD-CD-TR-1D7AC-WH	2-3/8" (60 mm)
ASD-CD-TR-2D8AC-WH	ASD-CD-TR-2D15WH-4P
ASD-CD-TR-2D15AC-WH	ASD-CD-TR-2D15AC-BK
ASD-CD-TR-MV-2D15AC-WH	
ASD-CD-TG-2D8AC-WH	ASD-CD-TGR-2D8AC-BK
ASD-CD-TGR-3D12AC-WH	
ASD-CD-TR-3D12AC-WH	ASD-CD-TR-3D12AC-BK
ASD-CD-TR-3D12WH-4P	
ASD-CD-TR-3D15AC-WH	
ASD-CD-TR-4D15AC-WH	ASD-CD-TR-4D15WH-4P
ASD-CD-TR-MV-4D15AC-WH	ASD-CD-TR-4D15AC-BK
ASD-CD-TGR-4D17AC-WH	
ASD-CD-TR-6D24AC-WH	ASD-CD-TR-6D24AC-BK
ASD-CD-TR-MV-6D24AC-WH	
ASD-CD-TS-2D8AC-WH	ASD-CD-TS-2D15AC-BK
ASD-CD-TS-2D15AC-WH	
ASD-CD-TGS-2D8AC-WH	ASD-CD-TGS-2D8AC-BK
ASD-CD-TS-3D12AC-WH	ASD-CD-TS-3D12AC-BK
ASD-CD-TS-3D15AC-WH	
ASD-CD-TS-4D15AC-WH	ASD-CD-TS-4D15AC-BK
ASD-CD-TS-6D24AC-WH	ASD-CD-TS-6D24AC-BK

For most up-to-date spec sheets please refer to [asd-lighting.com](http://asd-lighting.com)



# LED TRIMLESS DOWNLIGHT

## ACCESSORIES (sold separately):



## ACCESSORY COMPATIBILITY LIST:

Model	Accessories	Battery back-up kit 8W BLD-HM08D	Battery back-up kit 15W BLD-HM15D
ASD-CD-TR	1"	•	
	2" (8W)	•	
	2" (15W)		•
	3"		•
	3.5"		•
	4"		•
ASD-CD-TS	2" (8W)	•	•
	2" (15W)		•
	3"		•
	3.5"		•
	4"		•
ASD-CD-TR-MV	2"	•	•
	4"	•	•
	6"	•	•
ASD-CD-TG/ ASD-CD-TGR	2"	•	•
	3"		•
	4"		•
ASD-CD-TGS	2"	•	•

## BATTERY BACK-UP KIT INFORMATION

**BLD-HM08D** **BLD-HM15D** sold separately

Specifications	model: BLD-HM08D	model: BLD-HM15D
Input voltage	120-347 Vac, 50/60 Hz	
Input current	≤ 100 mA	
Output voltage	≤ 170 Vdc	≤ 175 Vdc
Output power	8W	15W
Lumen	800 lm	1,000 lm
Application	< 60W (0-10 V)	< 100W (0/1-10 V)
Ambient temperature	32°F to 122°F (0°C to 50°C)	

## INSTALLATION GUIDE

### IMPORTANT SAFETY INFORMATION:

Please read all the instructions below before installation!

- ▶ Make sure that the supply voltage corresponds to the rated product voltage.
- ▶ The product must be installed by a qualified electrician in accordance with the National Electrical Code and corresponding local codes.
- ▶ If the product is damaged, do not use it.

### ⚠ WARNING

**Risk of personal injury** – read and follow all warnings and installation instructions. Keep or give to the owner for future reference.

**Risk of cuts:** Wear gloves to prevent cuts or abrasions when removing from carton, handling, installing, and maintaining this product.

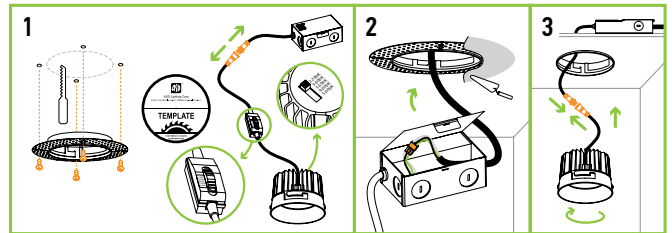
**Risk of electric shock:** This product must be installed in accordance with the applicable installation code by a person familiar with the construction and operation of the product and the hazards involved.

**Risk of Fire:** Minimum 194°F supply conductors. Consult a qualified electrician to ensure correct branch circuit conductor.

ASD® assumes no responsibility for claims arising out of improper or careless Installation or handling of this product.

### INSTALLATION STEPS:

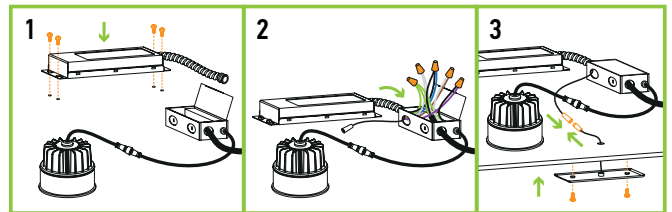
1. Cut a hole in the ceiling using template (included). Insert the Zero Clearance frame in to the cut-hole, secure it with screws. Disconnect the fixture from the junction box. Choose needed color temperature by adjusting the switch on the fixture or on the cord.
2. Plaster the frame. Connect the wires: Black to Black, White to White, Green to Green. Put the driver box above the ceiling through the hole in the frame.
3. Connect driver box and fixture using quick connector, insert fixture in to the frame, and twist it in the hole clockwise to lock in the frame.



### BATTERY BACK-UP KIT INSTALLATION:

**BLD-HM08D** **BLD-HM15D** sold separately

1. Secure the battery back-up to the ceiling.
2. Connect wires as shown on electrical diagram.
3. Connect test switch and secure it in the hole on surface.



For most up-to-date spec sheets please refer to [asd-lighting.com](http://asd-lighting.com)



# LED TRIMLESS DOWNLIGHT

## ORDERING INFORMATION

Model	UPC	Pcs. (pack) per carton	Carton size	Carton weight	GTIN 14
<b>CD-T</b>					
ASD-CD-TR-1D7AC-WH	810128118262	24	17.9" x 17.7" x 9.7"	23.2 lbs	10810128118269
ASD-CD-TR-2D8AC-WH	810050736596	18	12.4" x 11.2" x 11.6"	15.4 lbs	10810050736593
ASD-CD-TR-2D15AC-WH	810050736602	18	15.9" x 10.8" x 17.5"	26.8 lbs	10810050736609
ASD-CD-TR-MV-2D15AC-WH	810050739498	18	21.5" x 20.1" x 8.7"	26.8 lbs	10810050739495
ASD-CD-TR-2D15WH-4P	810128118286	8 (2)	10.4" x 10.4" x 12"	11.9 lbs	10810128118283
ASD-CD-TR-2D15AC-BK	810128111348	18	15.9" x 10.8" x 17.5"	26.8 lbs	10810128111345
ASD-CD-TS-2D8AC-WH	810050737012	18	14.6" x 12" x 13.4"	19.8 lbs	10810050737019
ASD-CD-TS-2D15AC-WH	810050736619	18	19.3" x 16.3" x 11.6"	27.9 lbs	10810050736616
ASD-CD-TS-2D15AC-BK	810128111362	18	19.3" x 16.3" x 11.6"	27.9 lbs	10810128111369
ASD-CD-TR-3D15AC-WH	810128118279	18	17.7" x 13.6" x 15.8"	30.1 lbs	10810128118276
ASD-CD-TS-3D15AC-WH	810128118347	18	17.7" x 13.6" x 17.5"	32.9 lbs	10810128118344
ASD-CD-TR-3D12AC-WH	810050736626	18	20.1" x 13.2" x 10.8"	25.4 lbs	10810050736623
ASD-CD-TR-3D12WH-4P	810128118316	8 (2)	13.2" x 13.2" x 7.7"	12.2 lbs	10810128118313
ASD-CD-TR-3D12AC-BK	810128111379	18	20.1" x 13.2" x 10.8"	25.4 lbs	10810128111376
ASD-CD-TS-3D12AC-WH	810128111393	18	20.7" x 14.8" x 12.8"	26.9 lbs	10810128111390
ASD-CD-TS-3D12AC-BK	810128111386	18	20.7" x 14.8" x 12.8"	26.9 lbs	10810128111383
ASD-CD-TR-4D15AC-WH	810050736633	18	19.5" x 14.4" x 12.2"	33.3 lbs	10810050736630
ASD-CD-TR-4D15WH-4P	810128118330	8 (2)	13.6" x 12.8" x 8.5"	13.9 lbs	10810128118337
ASD-CD-TR-MV-4D15AC-WH	810050739504	18	19.5" x 14.4" x 12.2"	33.3 lbs	10810050739501
ASD-CD-TR-4D15AC-BK	810128111430	18	19.5" x 14.4" x 12.2"	33.3 lbs	10810128111437
ASD-CD-TS-4D15AC-WH	810050737036	18	21.5" x 14.4" x 15.2"	33.3 lbs	10810050737033
ASD-CD-TS-4D15AC-BK	810128111409	18	21.5" x 14.4" x 15.2"	33.3 lbs	10810128111406
ASD-CD-TR-6D24AC-WH	810050739511	12	19.5" x 19.5" x 14"	37 lbs	10810050739518
ASD-CD-TR-MV-6D24AC-WH	810050739528	12	19.5" x 19.5" x 14"	37 lbs	10810050739525
ASD-CD-TR-6D24AC-BK	810128111447	12	19.5" x 19.5" x 14"	37 lbs	10810128111444
ASD-CD-TS-6D24AC-WH	810128111423	12	19.5" x 19.5" x 14"	38.6 lbs	10810128111420
ASD-CD-TS-6D24AC-BK	810128111416	12	19.5" x 19.5" x 14"	38.6 lbs	10810128111413
<b>CD-TG GIMBAL</b>					
ASD-CD-TG-2D8AC-WH	810050736640	18	14.2" x 12.8" x 10.4"	18.3 lbs	10810050736647
ASD-CD-TGR-2D8AC-BK	810128111454	18	14.2" x 12.8" x 10.4"	18.3 lbs	10810128111451
ASD-CD-TGS-2D8AC-WH	810128111478	18	17.1" x 12.8" x 11.6"	20.1 lbs	10810128111475
ASD-CD-TGS-2D8AC-BK	810128111461	18	17.1" x 12.8" x 11.6"	20.1 lbs	10810128111468
ASD-CD-TGR-3D12AC-WH	810128112321	18	16.5" x 14" x 12.8"	36.3 lbs	10810128112328
ASD-CD-TGR-4D17AC-WH	810128112338	18	22.4" x 15.2" x 15.2"	50.4 lbs	10810128112335

## ACCESSORIES:

Model	Description	UPC	Pcs. (pack) per carton	Carton size	Carton weight	GTIN 14
BLD-HM08D	Battery back-up kit 8W	810128111508	10	17.1" x 14.6" x 11"	19.6 lbs	10810128111505
BLD-HM15D	Battery back-up kit 15W	810050734882	10	17.8" x 13.5" x 9.5"	25.1 lbs	10810050734889

For most up-to-date spec sheets please refer to [asd-lighting.com](http://asd-lighting.com)



# LED TRIMLESS DOWNLIGHT

## ANNEX 1

Model	Watts	2,700 K	3,000 K	3,500 K	4,000 K	5,000 K
ASD-CD-TR-1D7AC-WH	7W	448 lm	474 lm	495 lm	498 lm	470 lm
ASD-CD-TR-2D8AC-WH	8W	550 lm	566 lm	616 lm	643 lm	640 lm
ASD-CD-TS-2D8AC-WH	8W	529 lm	551 lm	595 lm	626 lm	636 lm
ASD-CD-TR-2D15AC-WH ASD-CD-TR-2D15WH-4P ASD-CD-TR-2D15AC-BK	15W	830 lm	881 lm	980 lm	1,029 lm	1,000 lm
ASD-CD-TR-MV-2D15AC-WH	15W	914 lm	956 lm	1,042 lm	1,077 lm	1,032 lm
ASD-CD-TS-2D15AC-WH ASD-CD-TS-2D15AC-BK	15W	840 lm	902 lm	987 lm	1,026 lm	989 lm
ASD-CD-TR-3D15AC-WH	15W	979 lm	1,035 lm	1,136 lm	1,223 lm	1,226 lm
ASD-CD-TS-3D15AC-WH	15W	979 lm	1,048 lm	1,152 lm	1,219 lm	1,243 lm
ASD-CD-TR-3D12AC-WH ASD-CD-TR-3D12WH-4P ASD-CD-TR-3D12AC-BK	12W	751 lm	796 lm	880 lm	933 lm	925 lm
ASD-CD-TS-3D12AC-WH ASD-CD-TS-3D12AC-BK	12W	798 lm	823 lm	901 lm	953 lm	944 lm
ASD-CD-TR-4D15AC-WH ASD-CD-TR-4D15WH-4P ASD-CD-TR-4D15AC-BK	15W	825 lm	956 lm	1,011 lm	1,050 lm	1,055 lm
ASD-CD-TR-MV-4D15AC-WH	15W	885 lm	938 lm	1,034 lm	1,082 lm	1,041 lm
ASD-CD-TS-4D15AC-WH ASD-CD-TS-4D15AC-BK	15W	871 lm	928 lm	1,027 lm	1,090 lm	1,054 lm
ASD-CD-TR-6D24AC-WH ASD-CD-TR-6D24AC-BK	24W	1,691 lm	1,841 lm	2,001 lm	2,075 lm	2,051 lm
ASD-CD-TR-MV-6D24AC-WH	24W	1,683 lm	1,786 lm	1,960 lm	2,023 lm	2,009 lm
ASD-CD-TS-6D24AC-WH ASD-CD-TS-6D24AC-BK	24W	1,737 lm	1,800 lm	1,981 lm	2,038 lm	2,015 lm
ASD-CD-TG-2D8AC-WH ASD-CD-TGR-2D8AC-BK	8W	622 lm	645 lm	692 lm	713 lm	717 lm
ASD-CD-TGS-2D8AC-WH ASD-CD-TGS-2D8AC-BK	8W	573 lm	605 lm	661 lm	672 lm	671 lm
ASD-CD-TGR-3D12AC-WH	12W	828 lm	920 lm	1,013 lm	1,031 lm	1,043 lm
ASD-CD-TGR-4D17AC-WH	17W	1,384 lm	1,452 lm	1,547 lm	1,599 lm	1,623 lm

For most up-to-date spec sheets please refer to [asd-lighting.com](http://asd-lighting.com)